

ALABAMA ARCHITECT

November/December 1966

OFFICIAL PUBLICATION OF THE ALABAMA COUNCIL
OF THE AMERICAN INSTITUTE OF ARCHITECTS



1966 Alabama AIA Honor Award

50th ANNIVERSARY

•

CONVENTION ISSUE

Address to the Annual Meeting by
Edward B. Baumhauer, President, Alabama Council AIA

"the level of performance of Alabama
Architects is rising each year"

As my term comes to an end, I would like to report to you on the condition of the Profession of Architecture in the State of Alabama.

First, Professionally: In my opinion, the level of performance of the Alabama Architects is certainly rising each year, as is obvious from the projects being constructed across the State. I do not believe that at any time in the past has such a general degree of competence been attained. However, it is axiomatic that we must continually improve in our efforts, and I have reference not only to the "show case" projects but primarily to the average design produced by the average firm, for as you know, this is the mass of work upon which judgment of the profession rests.

Second, Economically: The condition of the profession has been good as construction activity has, through most of this year, remained high. However, the inflationary situation in the country at large has produced pressures which have had and will continue to have a dampening effect on construction. This situation, if continued, could have severe effects on us all, but most economic predictions I have read forecast some improvement during the coming year.

Third, Intellectually: I find it difficult to assess this area, but I do feel that the young men just com-

ing in to the profession have a more intellectual approach to the problems of architecture, and this can only work to the general good. However, I think that the need of continuing education, similar to the medical profession, which has always existed in architecture, grows more acute each year. With the constantly increasing complexity of architectural practice, it is essential that the University and the Council and Chapters cooperate in inaugurating a program in this field.

Fourth, Ethically: The Architectural Profession remains essentially a highly ethical one. This is not to say that we are free of ethical transgression by some of our members, nor is it to say that these transgressions do not cause problems for all of us. These deviations must be pursued with all the energy that our limited authority allows. However, if these deviations were the rule rather than the exception they would certainly not receive the publicity that is accorded them.

Fifth, Sociologically: In my opinion, we as a profession have been delinquent in this area for years, and indeed until recently, were almost completely divorced from participation in the mainstream of community life. We need—the individual Architect needs—to become involved to a greater extent in civic, cultural, and charitable activities in our respective commu-



President Baumhauer Addresses annual meeting in Birmingham.

nities. Considering the broad educational and professional background that we as a group possess, it is a tragic waste of one of our State's valuable human resources for Architects to neglect their civic responsibilities. One significant example of the benefits accruing to the community and the profession from this activity is the experience of our hosts, the Birmingham Chapter, in their tremendous group effort for the re-design of downtown Birmingham. The fruits of this effort will be seen and enjoyed by the citizens of Birmingham—and the Architects of Birmingham—for many years to come.

To sum up, the condition of the Profession today is generally good, but it will continue to be so only if we face up to our full responsibilities as citizens and Architects.

CONTENTS

President's Address	2
New Officers at Annual Meeting	3
Fritz Woehle Wins Honor Award	4
Honor Awards Jury Makes Three Selections	5
Seminar: "THE CHALLENGE" and Address by John Portman AIA	6
Seminar: "THE PRICE" and Address by Vernon DeMars FAIA	7
Cocktail Supper at Woehle's	8
Convention Theme: "What Price Design"	9
Founders Honored on 50th Anniversary	12
Products Exhibits Are Success	14
Exhibitors at Convention	15
New AIA Chapter Officers for 1967	16
Staco Breakfast	18

ALABAMA ARCHITECT

November-December 1966 Vol. 2, No. 6
Alabama Architect, official publication of the Alabama Council of the American Institute of Architects, is owned and published by the Council, an Alabama Corporation not for profit. It is published bi-monthly at the Executive Office of the Council, 501 Guaranty Savings Building, Montgomery, Alabama; telephone 264-4471 (area code 205).
Advertisements of products, materials and services adaptable for use in Alabama are welcome, but mention of names or use of illustrations of such materials and products in either editorial or advertising columns does not constitute endorsement by the Alabama Council, AIA. Advertising material must conform to standards set by this publication; and the right is reserved to reject such material because of arrangement, copy or illustration. Available at a subscription cost of \$3.00 per year. Single copies 50 cents. Roster issue \$2.00.

ALABAMA COUNCIL, AIA Officers and Councilors 1966

President—Edward B. Baumhauer—
Mobile
V. Pres.—Donald L. Horton—
Montgomery
Secretary—A. Jackson Davis—
Huntsville
Treasurer—Oscar W. Pardue—
Birmingham
Exec. Sec.—Jay Leavell—Montgomery

Birmingham Councilors
Fred Renneker, Jr., James E. Adams
and Donald Morrison, Jr.

Mobile Councilors
Thomas G. Shepherd and Marshall
Fischrupp

Montgomery Councilors
Howard E. McElhaney, William G.
McMinn and Parker Narrows

North Alabama Councilor
Lloyd H. Kranert and Thos. A. Jones

The Annual Meeting of the Alabama Council of Architects A.I.A. began promptly at 8:30 a.m. at the Tutwiler Hotel on Friday morning, December 2, 1966, with President Ed Baumhauer calling the session to order.

Fred Renneker, co-chairman for the 50th Anniversary meeting, and president of the host Birmingham Chapter, welcomed those attending, after which general chairman Allen Bartlett gave information on the events that were planned.

Jim Adams presented the following resolution, which was passed unanimously by the Council:

"Recognizing that there is a need for a program of Urban and Regional Planning in the State of Alabama, and being aware of the close relationship between planning and architecture, **THEREFORE, BE IT RESOLVED:** that the Alabama Council of the American Institute of Architects and the four Chapters comprising the Council encourage the establishment of such a program within the School of Architecture at Auburn University, and offer our full cooperation and assistance to this end."

Parker Narrows presented the following resolution, which was passed unanimously by the Council:

WHEREAS, Wm. A. Speer has been Dean of the School of Architecture and the Arts at Auburn University for the years 1962-1966; and WHEREAS, the Alabama Council A.I.A. has had close and cooperative association with Dean Speer in matters of the relationship between the School of Architecture and the Practicing Profession; and WHEREAS, Wm. A. Speer, during his four years as Dean of the School of Architecture and Arts, has contributed an outstanding Service to the School of Architecture, the Auburn University and the State of Alabama; and WHEREAS, Dean Speer is retiring from his position as Dean as of September 1, 1967; **NOW THEREFORE BE IT RESOLVED THAT** The Alabama Council of the A.I.A. does commend him for his contributions and services to the Profession of Architec-



Council officers who will serve during 1967 are Oscar W. Pardue, Secretary, Birmingham; A. Jackson Davis, Vice-President, Huntsville; Donald L. Horton, President, Montgomery; and Arthur Prince, Treasurer, Mobile.

New Alabama Council Officers Elected at Annual Meeting

ture and the School of Architecture at Auburn University.

Dan Cowling, Regional Director was unable to be present due to the illness of his wife's father, so his report was deferred. President Baumhauer then gave a resume of activities for the year and then delivered the very stirring message which is printed on page 2 of this issue.

Annual Meeting in progress (bottom left) hears report by Fred Renneker, Jr., president Birmingham Chapter AIA.



The report of the Nominating Committee, under the chairmanship of past president Hugh Ellis, was presented by executive secretary Jay Leavell, and the slate was unanimously approved. A report was given by President Baumhauer on the Octagon Fund and it was noted that all four Chapters are working to subscribe their quotas. There being no further business, the meeting was adjourned.

Incoming president Donald L. Horton receives gavel from president Edward B. Baumhauer signifying change of office.

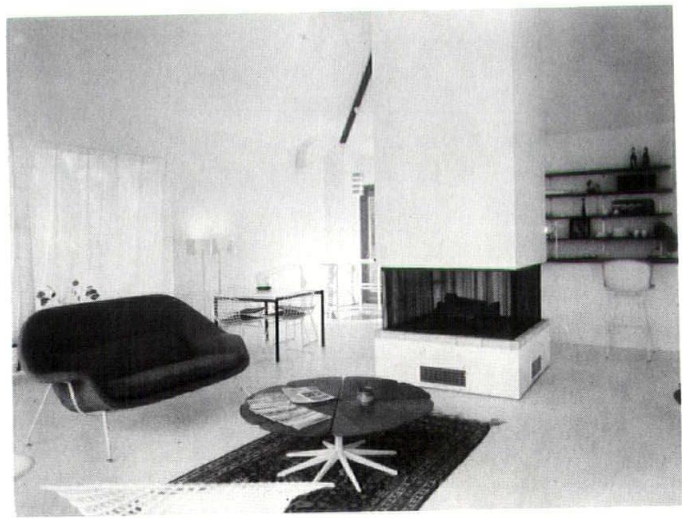
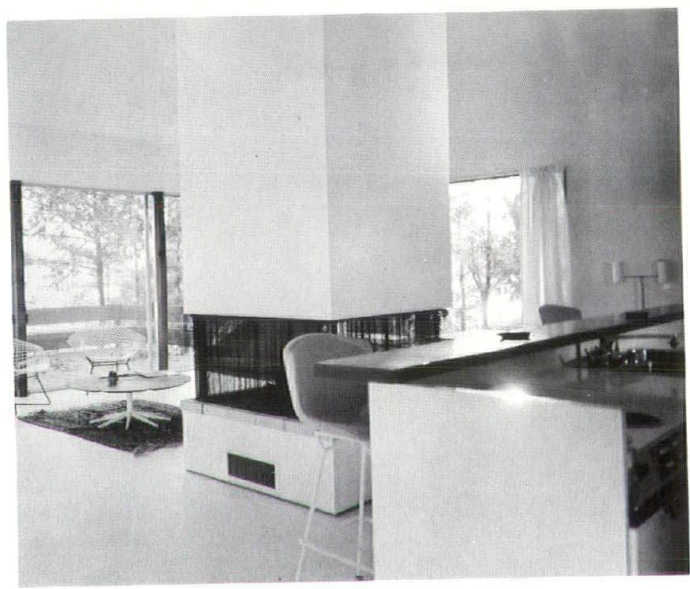
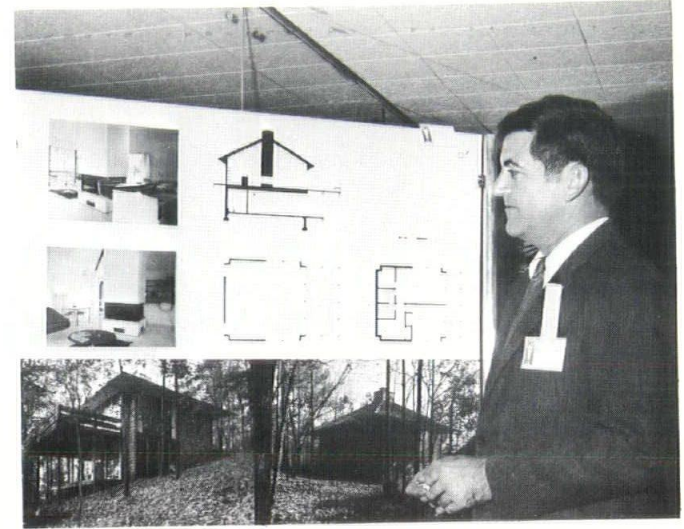




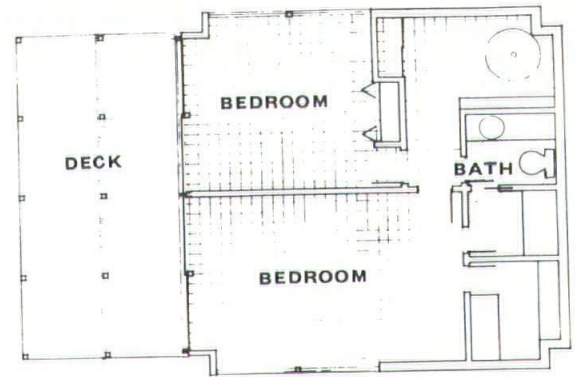
Lake Residence Designed by Fritz Woehle Wins Honor Award

A lakeside bachelor's residence for George Barber, Jr., designed by Birmingham architect Fritz Woehle, AIA, was presented an Honor Award at the annual convention. Specifications and jury comments on this simple, restrained residence are detailed on the opposite page.

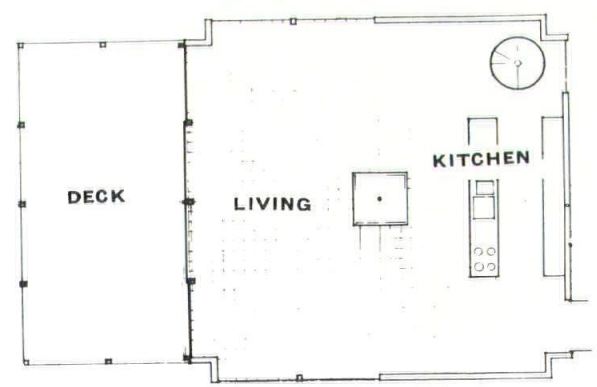
Photos by Claude V. Cornwell AIA



First Floor



Second Floor



Honor Awards Jury Makes Three Selections

An outstanding jury composed of three highly qualified judges selected three Architects to receive awards at the convention. Shown discussing one of the entries are jurors William W. Caudill, FAIA, director of the School of Architecture at Rice University; Harold T. Spitznagel, FAIA, second vice president of The American Institute of Architects, architect in Sioux Falls, S.D., and chairman of Liberty Buildings Award Program; and John C. Portman, Jr., AIA, Edwards and Portman, Architects, Atlanta, guest design critic of Georgia Tech. Alabama Architects submitted 32 entries in the Second Annual Alabama Council AIA Honor Awards Program.



PROJECT Lake Residence
Lake Logan Martin, Alabama

ARCHITECT Fritz Woehle,
Birmingham, Alabama

OWNER George Barber, Jr.
Birmingham, Alabama

CONTRACTOR W. S. Cleage Construction Company
Birmingham, Alabama

JURY COMMENTS

This restrained, simple and unpretentious residence clearly demonstrates that elegance can be achieved at a relatively low cost. The fact that the designer confined his palette to a few but appropriate materials, contributed immeasurably to the excellence of the design.



PROJECT Library Building for Auburn
University, Auburn, Alabama

ARCHITECT Davis, Speake & Associates —
Architects and Engineers
Birmingham, Alabama

ENGINEERS Plumbing — Francis T. Payne
Electrical — Hazzard & Nall

OWNER State of Alabama and Auburn
University

GENERAL

CONTRACTOR Mid-South Constructors, Inc.

JURY COMMENTS

A University Library which has an orderly and well organized plan. The Grid type structural system permits great flexibility should it be required. The plan is of the open shelf Modular type and the building is framed so as to permit of future expansion.



PROJECT Wenonah State Junior College
Jefferson County, Alabama

ARCHITECT Charles H. McCauley Associates,
Architect
Birmingham, Alabama
Structural — Robert H. Wallace
Mechanical-Electrical — Hazzard,
McRoy & Cone

CONTRACTOR Robins Engineering, Inc.
Birmingham, Alabama

JURY COMMENTS

This Junior College Complex revealed great visual strength and its masses, while well articulated, did not detract from its unified plan. The jury was somewhat concerned with its lack of structural integrity in that what appeared to be a concrete structure, was actually partially constructed of structural steel.



In our age of affluence, the country has found a public passion for improving the physical environment. Can today's Architects really intervene, contribute or enhance to any substantial degree? This year's activity in construction will reach 50 to 60 billion, exclusive of roads and dams. Most of it will be very prosaic in design, for design is just one layer of the thick lamination of engineering, site work, specifications of materials, programming, detail drawing, supervision and salesmanship that supports the profession of Architecture.

However, to an American seeking environmental beauty, design is the vital layer. There is no one but the Architect trained to do this design. If he does not accept this fantastic commission or challenge, someone else will and none of us are likely to be happy with the results. The designer is the qualitative guide, the key man of the profession of Architecture.



Lawrence Whitten AIA, program chairman who supplied the capsule comments at left, introduces the panelists on the first seminar. At his left is John Randolph Myer, Associate Professor of Architecture, Massachusetts Institute of Technology, Cambridge, Mass., and Frank J. Matzke, AIA.

Seminar: "THE CHALLENGE"

The panel in action: Frank J. Matzke, AIA, Deputy of Planning, State University Construction Fund, State of New York, Albany, N.Y.; and standing, William W. Caudill, R.A.I.A., Principal, Caudill-Rowlett-Scott, Architects, Houston-New York, and Director, School of Architecture, Rice University, Houston, Texas.

The Value of Design in Our Efforts to Meet "The Challenge"

A Case History by John C. Portman, A.I.A.

Described as a "step-by-step course in do-it-yourself urban renewal," the case history by John C. Portman, AIA, Atlanta architect-businessman, revealed the clear headed thinking behind the free enterprise concept that Portman and his colleagues have originated and carried out in downtown Atlanta to remake the heart of this city. A daring vision pressed into reality, the example given by Mr. Portman demonstrated forcefully what can be accomplished by the architect in today's business-oriented society.



Mayor Albert Boutwell of Birmingham (left) presents the keys to the Magic City to John Portman.

Addressing the convention, architect Portman displays an uncanny ability to translate his concepts into words and actions that visibly impressed those in attendance.





M. E. Wiggins, president of Birmingham City Council, presents a key to the city to Vernon DeMars following his address.

What Direction Will Evolve from the State Turmoil over Aesthetics in Our Profession?

"Architecture has turned into chaos," said Ludwig Mies van der Rohe. "It is baroque, with buildings by painters, not architects. Architecture can only express our civilization. You cannot invent a new Architecture every Monday morning."

In setting the stage for speaker Vernon De Mars, FAIA, the words above were quoted by Lawrence Whitten, program chairman. He proceeded to outline American Architecture, through the "gentleman's game and carpenter's craft" which followed Thomas Jefferson's time. Then industrialism came and America made its first original contribution to Architecture, the skyscraper.

Between the great world wars a new industrial style began to undermine the Roman temples and Vene-

tian palaces of the wealthy proprietors, Gropius and Mies moved to the United States and became patron saints of the new Architecture.

The crusaders broke ranks in the early 1960's . . . concrete came on strong and small aesthetic wars broke out all through the profession. We are in this era now and what direction will we take?

Vernon A. DeMars, Fellow AIA, Demars and Wells, Berkeley, California, took a long hard look at the answers to this problem. Obviously an advocate of the best of the past used in conjunction with the best of today, DeMars gave a timely guided tour through "Demonstration Square" in the Berkeley Campus and related the architecture to the events in a humanistic manner that carried great impact and humor.



Seminar:

"THE PRICE"



(Above) Moderator Louis M. Wolff discusses "The Price" as panelist Spitznagel and Bill Lacy ponder a point.

(Below) Dean Bill Lacy describes the program at the University of Tennessee in producing creative architects and designers, while panelist Spitznagel goes over his notes.



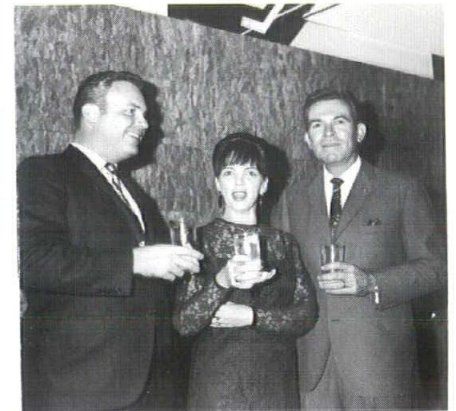
Pictured above are Lawrence Whitten, program chairman, panelist Harold Spitznagel, FAIA, Vice President American Institute of Architects; panel moderator Louis M. Wolff, Columbia, S.C.; and Bill N. Lacy, AIA, Dean, School of Architecture, The University of Tennessee, Knoxville. They discussed the "Price" to the profession if Architects are to really intervene, contribute or enhance to the substantial degree necessary for the profession to achieve its proper place in shaping the environmental beauty of America, with particular emphasis on design.



Cocktail Supper at the Home of the Fritz Woehle's

Over two hundred invited architects and guests flowed through the charming hillside home of Fritz and Lynn Woehle on Thursday evening as the 50th Anniversary meeting of architects got underway. Providing an elegant yet friendly atmosphere for meeting new members and renewing old acquaintanceships, the gathering served as a springboard to the two days of seminars and sessions that followed. On hand to greet arrivals were Rita and Ed Baumhauer, shown chatting with Martha and Sumpter Smith.

Arriving at the front entrance are Lib and Don Horton, Verna and Parker Narrows.



Tom Jones and Lloyd Kranert, Huntsville, visit with Robbie (Mrs. Marshall) Fischrupp, Mobile.



This chatty group includes an unidentified person, George Gauntt, Bill Williams, and Arthur Prince.



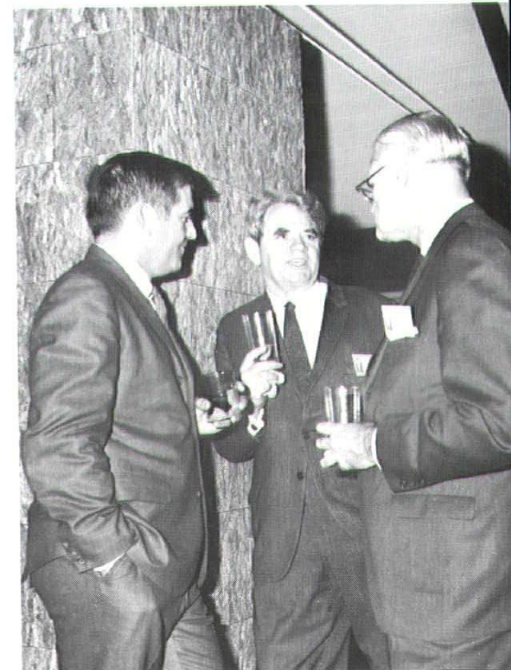
Registration chairman Bill Chambers checks the list of late comers with Frances Holmquist.

Discussing a point are Nelson Smith, Harold Spitznagel, and Allen L. Bartlett (who was the very effective general chairman of the convention).

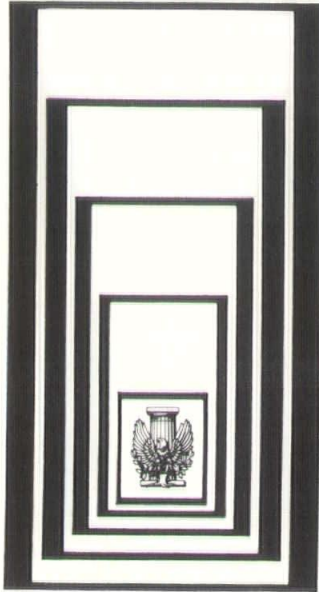
Auburn professor Steffen Doerstling laughs over a remark made by Gene Burr (right), as retired professor Walter Burkhardt looks on.



Chatting at the cork-covered fireplace wall (right) are host Fritz Woehle, panelist William Caudill, and architect Charles Davis.



50



50th Anniversary Symbol (shown above) was designed by Birmingham architect Don Morrison, Jr., and was widely used on all convention mailings and literature. Other convention credits include: General Chairman, Allen L. Bartlett, A.I.A.; Co-chairman, Fred Renneker, Jr., A.I.A.; Program, Lawrence S. Whitten, A.I.A.; Meeting Facilities, John A. Macnab, A.I.A.; Registration, Wm. N. Chambers, A.I.A.; Co-chairman, Evan M. Terry, A.I.A.; Products Exhibits, Oscar W. Pardue, A.I.A.; Co-chairman, Robert V. Bishop, A.I.A.; Honor Awards, Wm. Lindsay Williams, A.I.A.; Co-chairman, Don M. Morrison, A.I.A.; Finance, Paul M. Speake, A.I.A.; Publicity, Edward J. Bondurant, A.I.A.; Co-chairman, Jay Leavell, Exec. Sec'y.; Entertainment, Fritz Woehle, A.I.A.; Co-chairman, Lynn Woehle.

50th Anniversary
ALABAMA COUNCIL
1966 CONVENTION
American Institute
of Architects

TUTWILER HOTEL
BIRMINGHAM, ALABAMA
December 1, 2, 3, 1966

THEME _____
"What Price Design"

HEARD ABOUT

IMAGE DRAFTING?

It lifts images — it copies —
from virtually any original.

IN
SECONDS

Even Blue
Line Prints.



And it puts the images on a drafting material . . . either vellum or polyester . . . for making new bluelines or sepias.

Some have special adhesive backings to allow you to add pre-drawn or illustrated information to current drawings.

- SAVES TIME
- SAVES MONEY
- ELIMINATES RE-DRAWING

For more information write:

John R. Moffitt Co., Inc.

Birmingham — Montgomery
2025 7th Ave. 108 N. McDonough



Fred Renneker, Jr., president of the Birmingham host chapter and co-chairman of the convention, addresses the group during the dinner meeting.

ESTABLISHED 1903

Robert Jemison, Jr., President



Business and Commercial Leases
Industrial Properties
Property Management
Mortgage Loans • Appraisals
Developers • Sales

Jemison Realty Company

2105 3rd Ave., N. / 251-5141

PROFESSIONAL CARDS

JAMES A. EVANS

Consulting Engineer

Phone 322-4791

Brown-Marx Building

BIRMINGHAM, ALABAMA

HALLMARK & BROWDER

ELECTRICAL & MECHANICAL
ENGINEERS

139 Lee St. Tel. 265-5555

Montgomery, Alabama

Registered Professional Consultants
Alabama, Florida, Georgia, Mississippi

WILLIS ENGINEERING

REGISTERED: ALABAMA, TENNESSEE
& MISSISSIPPI

ROBERT C. WILLIS, P. E.
CONSULTING ENGINEER
ELECTRICAL AIR CONDITIONING
HEATING AND PLUMBING



PHONE 764-0817 P. O. BOX 816
612 EAST TENNESSEE STREET
FLORENCE, ALABAMA 35631

Paul Robertson

ARCHITECTURAL PHOTOGRAPHY

- EXTERIORS
- INTERIORS
- AERIAL
- COLOR
- BLACK & WHITE

New Location, 847 South Perry St.

Montgomery, Ala. Phone 263-0413

Special attn. to work anywhere in the State



FRANCIK

Look what's happened to the old steel door!

It used to be the ugly duckling of the construction industry. Now it poises, now swings with stately grace, proudly at the beck and call of the sophisticated architect.

What we're saying is that Ceco "Colorstyle" Décor Doors live up to a reputation. Used by you, they take on the luster of your artistry. They are worth considering in this light.

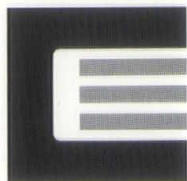
For instance, you can shop for what you want through countless variations. The doors come smooth or embossed, and in the most appealing colors.

To keep the doors pristine, we ship them in polyethylene bags inside cartons. Your contractor erects them bagged and keeps them bagged. He puts the hardware on right through the polyethylene. The bags stay on till clean-up time.

Ask for catalog 2063-B, or better still, ask for a Ceco man to bring samples to your office. The Ceco Corporation, general offices: 5601 West 26th Street, Chicago, Illinois 60650. Sales offices and plants in principal cities from coast to coast.

**CONTACT YOUR AREA
SALES OFFICE:**

Birmingham, Ala. 35201 • 3500—27th Ave., N.



CECO

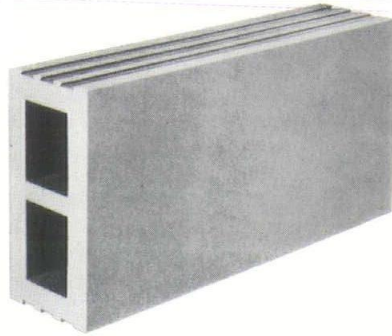
COLORSTYLE STEEL DOORS

NATCO

Ceramic Glazed VITRITILE

Structural Clay Facing Tile

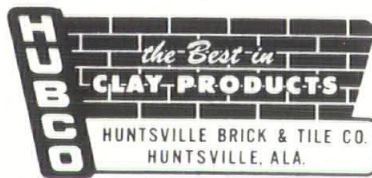
Available in various solid colors, speckled and mottled effects. A complete line of stretchers, shapes and fittings furnished to meet all job requirements.



Series "8W" "6T" "4D"
 Tile Face Size: 7 $\frac{3}{4}$ " x 15 $\frac{3}{4}$ " 5 $\frac{1}{16}$ " x 11 $\frac{3}{4}$ " 5 $\frac{1}{16}$ " x 7 $\frac{3}{4}$ "

Natco Corporation
 327 Fifth Avenue • Pittsburgh, Pa. 15222

Birmingham Sales Office:
 726 South 37th Street
 P.O. Box 30050, Birmingham, Ala., 35222
 Telephone: 328-0525



Bear Lumber Company, Inc.

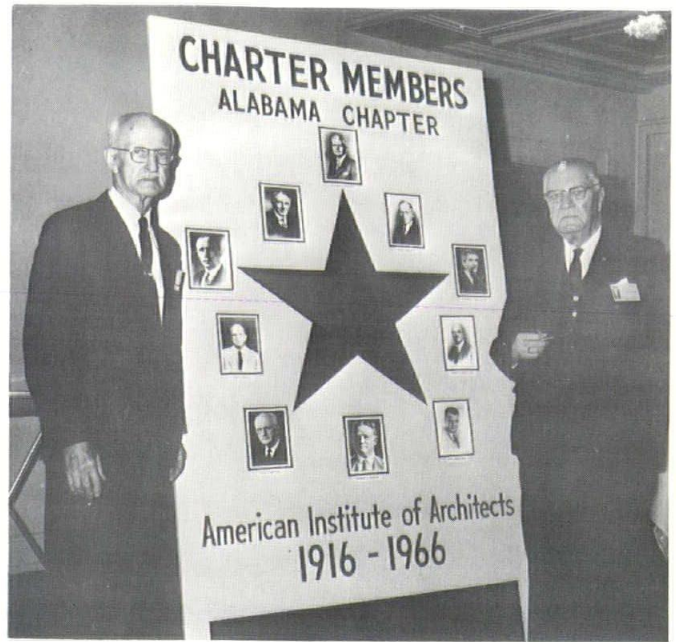
LUMBER - MILLWORK - BUILDING MATERIALS
 Box 2071 — Jefferson-Perry Streets
 Montgomery, Alabama 36103
 Telephone 262-2961

TEAGUE HARDWARE CO.

174 COMMERCE
 PHONE 262-0541

The Helburn Company, Inc.

FOOD SERVICE EQUIPMENT - CAFE - BAR
 HOTEL SUPPLIES and REFRIGERATION
 J. E. ALFORD 434 Montgomery Street
 Telephone 262-8346 Montgomery, Ala.



FOUNDERS HONORED ON 50th ANNIVERSARY

Architects in Alabama began their affiliation with the American Institute of Architects in 1916, when an official chapter was authorized in Birmingham. Fifty years later, two of the founders who are still living attended the meeting. Pictured above in front of the large display board which exhibited photographs of all ten of the founders, are John A. Wetzel and D. O. Whilldin.

Other founders now deceased were Frederick Ausfield, Frederic Child Biggin, Hugh Martin, John A. Miller, Bem Price, George B. Rogers, William T. Warren and Harry B. Wheelock.



Founders John Wetzel and D. O. Whilldin shake hands as they reminisce over events dating back fifty years and more.

concrete progress...

cement manufacturers work so many ways to make it happen

MATCHING CONCRETE'S TALENTS TO THE ARCHITECT'S CREATIVENESS

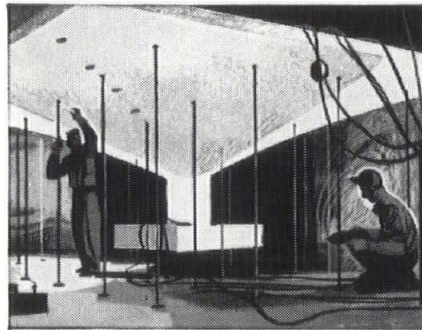
Today's unique concrete shell roofs evidence dramatically how concrete is capturing the imagination of architects—and for that matter, of professionals in every field of construction. □ Yet, the growing appeal of concrete is no mere happenstance. It has been developed by broadening the versatility of concrete, by enabling builders to exploit its limitless potential—by literally “making progress happen.” □ Major responsibility for this development was taken on years ago in the U.S. and Canada by the manufacturers of portland cement. While competing for sales, they cooperate for progress. Through their Portland Cement Association, they sponsor a development program beyond the resources of any of them individually. □ Research, basic and applied, conducted in a 10-million-dollar laboratory complex, has enabled concrete to meet the needs of a new era. □ In the continuously changing technology of construction in every field, concrete users

depend on the continuing flow of engineering and technical literature provided—as well as the services of a specialist staff, including 375 field engineers working out of 38 district offices. □ These services are among the many provided by cement manufacturers, without charge, to users of concrete. They benefit everyone in some way every day at work, at home, on the highway.

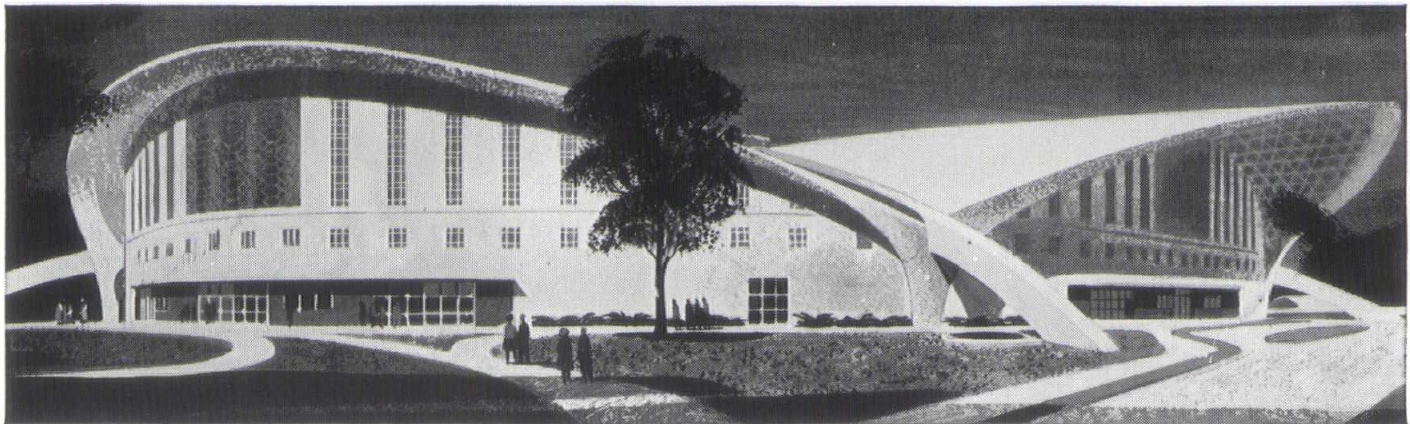
PORTLAND CEMENT ASSOCIATION

1214 South 20th St., Birmingham, Alabama 35205

An organization to improve and extend the uses of portland cement and concrete



TESTING A NEW TWIST IN CONCRETE. Engineers at PCA Laboratories subject a concrete shell to 10½ tons of load. Findings help architects and construction engineers to broaden their uses of concrete in fresh, bold ways.



*Electric heat
costs
3 times more
than GAS!*

*That's
Matchless
?*

**GAS HEATS
BEST TOO!**

alagasco
ALABAMA GAS CORPORATION



Products Exhibits Are Success

"An overwhelming success!"

That's how architects and exhibitors alike termed the afternoon devoted to displays of products which were visited by architects and wives in attendance at the convention. A total of fifty-one exhibitors participated, and their names are listed on the opposite page. At the conclusion of the exhibits, a cocktail party was hosted by the Alabama Concrete Industries Association, during which time door prizes were awarded.

Prizes given by the Convention were won as follows:
Color TV — won by Fred Underwood
Polaroid Camera — won by Mrs. Floyd (Echo) Puckett

Tape Recorder — won by Claude V. Cornwell
Other prizes awarded by exhibitors are too numerous to mention.

Shown above and on the next page are views representative of the excellent displays and the crowds in attendance.

- Washed Sand
- Washed Gravel
- Clay Gravel
- Grading
- Lawn Sand
- Top Soil
- Fill Dirt
- Paving

Dixie Sand & Gravel Co., Inc.

Wash. Ferry Road and B'ham Highway

POST OFFICE BOX 1128

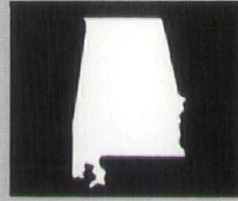
MONTGOMERY, ALABAMA 36102

Exhibitors At Birmingham 50th Anniversary Convention

Alabama Power Company Electrical Heating Association, Inc.	Libby-Owens Hardware Co.
Acousti Engineering of Alabama, Inc.	Kawneer Co.
Alabama Engineering and Supply Co., Inc.	Southern Prestressed Concrete, Inc.
General Equipment Manufacturers	Devoe Paint Division — Celanese Coatings Co.
Alabama Materials Co.	Day-Brite Lighting, Inc.
Plastic Clad Corp.	Hollywood Window Co.
Bonitz Insulation Co. of Alabama	Modular Building Systems, Inc. S.E.
Portland Cement Assn.	Bickerstaff Clay Products Co., Inc.
American Olean Tile Co.	Indurall Coatings, Inc.
The Georgia Marble Co.	Walker Plywood, Inc.
Garner Stone Co.	Earl L. Griffin Company
American Institute of Steel Construction, Inc.	Square D. Company
The Superior Electric Co.	Landis and Co.
J. M. Gober & Co.	Mullis Hardware Co., Inc.
H. A. Lilly Associates	Southern Sash Supply of Montgomery, Inc.
James H. Emack	Sansing Sales Engineers
Vulcan Materials Co. — Southeast Division	C & S Steel Corporation
J. F. Day & Co., Inc.	Steel City Wholesalers, Inc.
Bodine-Bryson & Rolling, Inc.	Jackson Hardware Supply Co.
Natco Corporation	Stylon Corporation
The Glidden Co.	Zac Smith Stationery Co.
Alabama Gas Corporation	Zac Smith Stationery Co.
Cooke Associates	BEBCO Distributors
Stabler Paint Mfg. Co.	Koppers Co., Inc.
Wagstaff Hardware Co.	American Artachromie, Inc.



November-December 1966



*Serving the
Architects and
Builders of
the State*

ALABAMA CONCRETE INDUSTRIES ASSOCIATION

ACIA

P. O. BOX 4157
401 BELL BUILDING
MONTGOMERY, ALABAMA

*Building for Permanence
with Concrete Products*



GRESHAM, WILLIAMS AND JOHNSON CO.

General Contractors

P. O. BOX 1708
DECATUR, ALABAMA 35601

PEARCE, DEMOSS & KING, INC.

GENERAL CONTRACTORS

1308 Church Street, N. E.

Decatur, Alabama

SATISFIED CUSTOMERS — OUR BIGGEST ASSET

New AIA Chapter Officers for 1967

The four Alabama Chapters of The American Institute of Architects have completed the election of officers, directors and councilors to serve during the year 1967. They are as follows:

BIRMINGHAM CHAPTER

President — Fritz Woehle
924 18th St. S.
Birmingham, Alabama 35205

Vice President — E. L. Christian
2925 Cahaba Road
Birmingham, Alabama 35223

Treasurer — Walter Entrekin
3629 5th Avenue, S.
Birmingham, Alabama 35222

Secretary — George Gaunt
811 Title Building
Birmingham, Alabama 35203

Director (two year term) —
James E. Adams
921 City Federal Building
Birmingham, Alabama 35203

Alabama Council Representative —
Paul M. Speake
3004 7th Avenue, S.
Birmingham, Alabama 35233

Alabama Council Representative —
Nelson Smith
448 Brown-Marx Building
Birmingham, Alabama 35203

Alternate Council Representative —
John M. Fuller
712 S. 22nd St.
Birmingham, Alabama 35233

MOBILE CHAPTER

President — John A. McArthur
1860 Government Street
Mobile, Alabama 36606

Vice President — Marshall Fischrupp
1007 Van Antwerp Building
Mobile, Alabama 36602

Secretary — Charles P. McCleskey
205 North Conception St.
Mobile, Alabama 36602

Treasurer — Charles E. Rogers
1010 Merchants National Bank Bldg.
Mobile, Alabama 36602

Councilor — Thomas G. Shepherd
1420 Government St.
Mobile, Alabama 36602

Alternate Councilor
Thomas B. Bealle, Jr.
1170-A Beltline Highway South
Mobile, Alabama 36609

MONTGOMERY CHAPTER

President — William M. Pearson
777 South Lawrence Street
Montgomery, Alabama 36104

Vice President — Jim H. Seay
2707 Woodley Road
Montgomery, Alabama 36111

Secretary — John McDonald
88 West South Boulevard
Montgomery, Alabama

Treasurer — John R. Farris
3637 Fernway
Montgomery, Alabama 36111

Director (3 years) — Douglas Baker
P. O. Box 861
Andalusia, Alabama 36420

Councilor — Howard E. McElhane
416 South Perry Street
Montgomery, Alabama 36104

Councilor — William McMinn
School of Architecture & Arts
Auburn University
Auburn 36830

Councilor — William M. Pearson
777 South Lawrence Street
Montgomery, Alabama 36104

Previously Elected Directors

(one year left to serve)
William G. McMinn
School of Architecture & Arts
Auburn University
Auburn, Alabama 36830

(two years left to serve)
Parker A. Narrows
First National Bank Building
Montgomery, Alabama 36104

NORTH ALABAMA CHAPTER

President — Thos A. Jones
107 Jefferson Street
Huntsville, Alabama 35801

Vice-President — Joe F. Milberger
100½ Jefferson Street
Huntsville, Alabama 35801

Secretary — Clyde Fleming
501 Terry-Hutchens Building
Huntsville, Alabama 35801

Treasurer — Walter Hall
P. O. Box 1247
Decatur, Alabama 35602

Director (1 year) — Richard Rosenvold
117½ Green Street SE
Huntsville, Alabama

Director (3 years) — A. Jackson Davis
401 Lowell Drive
Huntsville, Alabama 35801

Director (4 years) — Malcolm Smith
1949 Florence Blvd.
Florence, Alabama 35630



INSTANT SERVICE

... from the 47 branches of Noland Company located in 10 Southeastern states and the District of Columbia. As the world's largest independent wholesaler of mechanical equipment, Noland Company distributes only the finest products backed by the reputation and integrity of leading manufacturers.

5 BRANCHES SERVING ALABAMA

Birmingham, Decatur, Gadsden, Montgomery



NOLAND

Noland Company Wholesale Distributors: Plumbing • Heating Industrial • Electrical • Refrigeration • Air Conditioning • Machine Tools

For the finest in finishes...

always specify...

Staco Paint products — architectural paints, enamels, varnishes and stains — are manufactured in Alabama to meet exacting quality requirements of the most discriminating architects, owners and contractors.

Per gallon price is usually no higher than that of some other brands often specified. Yet, Staco offers many extra advantages. Having the factory located near the job means less transportation costs involved... prompt availability of technical assistance... superior delivery service.

Savings possible through these lowered selling and servicing costs in addition to manufacturing efficiency are reflected in generous use of more expensive ingredients in our product. And that means pleasing and more completely satisfying results in your finished job.

When specifying, consider Staco Paint products — the name to merit your confidence. We're ready, willing and anxious to furnish information or assistance to you. Just telephone (205) 592-8958 (collect) and ask for: L. Vastine Stabler, L. C. Burks, Philip H. Boyd, Claude F. Kersh, Bill Hathcox, E. E. "Buddy" Strickland, Emery M. Lowry, or Fred Davis.



STABLER PAINT MFG. CO.
INCORPORATED

3827 First Avenue North / Birmingham, Alabama 35222

ALABAMA'S LARGEST MORTGAGE BANKING OPERATION!
SPECIALISTS IN LONG-TERM FINANCING ON INCOME PROPERTIES

- Apartments • Commercial Buildings • Medical or Dental Clinics
- Shopping Centers • Warehouses • Industrial Properties
- F.H.A. • V.A. • CONVENTIONAL • RESIDENTIAL LOANS
- Nursing Homes • Offices

STATEWIDE OPERATION
 BIRMINGHAM Phone 323-4481
 HUNTSVILLE Phone JE 9-3701
 MONTGOMERY Phone 265-9556

**COBBS,
 ALLEN
 & HALL**
 MORTGAGE COMPANY, INC.

OPELIKA Phone 745-6451
 MOBILE Phone 471-1526
 DECATUR Phone 355-1441
 PENSACOLA Phone 433-6569



PHOTOGRAPHY

- Aerial • Color • Mural
- Progress • Black & White

**Scott Photographic
 Services** 458 So. McDonough St.
 Montgomery, Ala.

Assignments Accepted Over the State
 John Englehardt Scott, Jr.

Tel. 262-8761

ELECTRONIC ■ AIR CONDITIONING
 REFRIGERATION ■ PARTS AND SUPPLIES



NOLIN-McINNIS, Inc., Wholesale

P.O. Box 2229
 Telephone 263-3863

211-215 Commerce Street
 Montgomery 3, Alabama



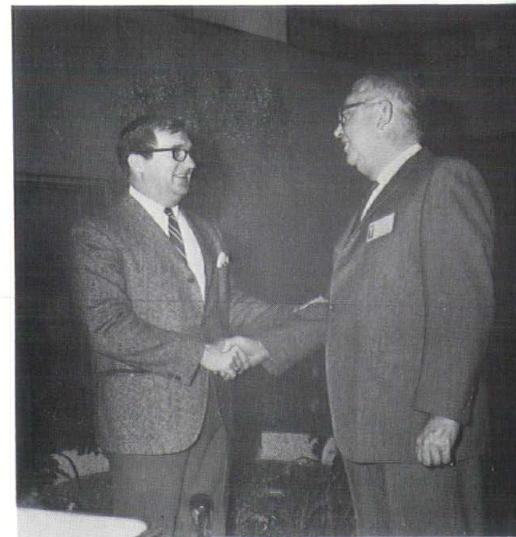
P. O. Box 1585
 MONTGOMERY, ALA. 36102

We are seriously in this Dynamic Business of selling "New Steel"

For Service, Phone:
 265-4431 — 265-9733

GAMBLE'S, INC.
 1401 North Decatur Street

As countless innovations alter the technology of construction and continually broaden the application of steel, it becomes mandatory that the serious steel man consider the "Whole World of Steel" as his province.



**BREAKFAST HOSTED BY
 STABLER PAINT MFG. CO.**

Coming in for a hearty breakfast on Saturday morning, Montgomery architect Sam Butner is greeted by Vastine Stabler, who hosted the annual event for the second consecutive time.

Wreck Mars Trip Home

Returning from the convention, Mark Tiller and his wife drove through Tuscaloosa to pick up their daughter, headed for Montgomery and home. Outside of Prattville a car swung in front of them, causing Mark to jam the brakes and snap an ankle. Daughter Jerelyn hit the windshield, received cuts and bruises. Most seriously hurt was Twoie, who later developed a serious head injury requiring surgery. All are now luckily on the road to recovery.



\$50 Christmas Stocking

Mrs. John M. Fuller couldn't believe her ears when her name was drawn by speaker Vernon DeMars as winner of the \$50 Christmas Stocking given to the wife of an architect at the Friday night dinner. Assured it was hers, she hastened to pick it up, visions of sugar plums dancing in her head.

"total-

ELECTRIC

living
COSTS

**LESS... than our neighbors normally
pay for heating alone!"**



All for
79c
a day!

Mr. and Mrs. C. E. Paschal
Route 9, P. O. Box 349
Birmingham, Alabama

Features of this 2,400-square-foot home include:
• heating and cooling with the all-season Electric heat pump • built-in Electric range • surface cooking units • vent hood • dishwasher • washer • dryer • **two** refrigerator / freezer combinations • **three** separate freezers • quick recovery Electric water heater • Electric workshop with power tools

Move UP to total-ELECTRIC living!

Alabama Power

Company... Investor Owned — Helping Develop Alabama



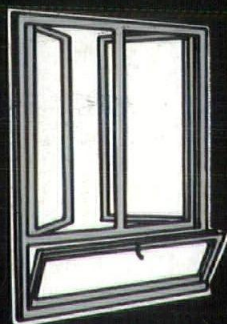
THE ALABAMA ARCHITECT
Suite 501—Guaranty Savings Bldg.
P. O. Box 267—Montgomery, Ala.

BULK RATE
U. S. POSTAGE
PAID
MONTGOMERY, ALA.
PERMIT NO. 130

Alabama's **CENTRAL** Source
for Technical Information
and Distribution of

Aluminum Windows

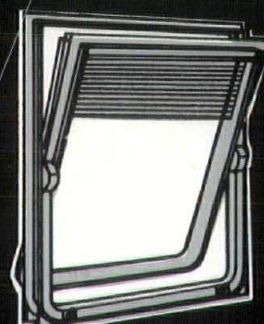
Representing the Nation's **MAJOR MANUFACTURERS** of
ALUMINUM AND STEEL WINDOWS



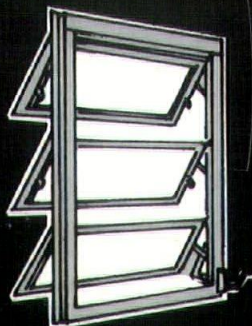
COMBINATION
CASEMENT



PROJECTED



THERMAL CONTROL



AWNING



DOUBLE HUNG

Also a Complete Line of **CURTAIN WALL & Complete Line of BUILDING SPECIALTIES**

Modernfold Folding Doors
Hotpoint Built-In Appliances
Nutone Built-In Equipment
Kwik-Set Hardware
Armweld Hollow Metal

Majestic Fireplace Grills
Kitchen-Aid Dishwashers
Sun Control Grills
Kane Detention Screens
Nord Wood Doors & Columns



Southern Sash
SUPPLY OF MONTGOMERY, INC.

506 No. Court • P. O. Box 446 • Phone 265-3521 • Montgomery, Ala.