

IA LIBRARY & ARCHIVE
735 New York Ave., N.W.
Washington, D.C. 20006

MAY 2005

**Public, Health
& Historic
Projects**

**Consultants
Directory**

**WAF Annual
Report**

PCI 2004 Design Award Winner
– Best Multifamily Building



University Village Midrise Lofts
Total Precast Structural Frame
Chicago, IL

PRECAST APPLICATIONS

- Parking
- Offices
- Hospitals
- Municipal
- Industrial
- Retail
- Hotel/Motels
- Housing
- Manufacturing
- Food Service
- Sports Complexes
- Schools
- Bridges
- Soundwalls
- Power Plants
- Justice Facilities
- Dormitories
- Residential

PRECAST PRODUCTS

- Architectural & Structural Walls
- Beams & Columns
- Custom Architectural Products
- Double Tees
- Spancrete Hollowcore Wall Panels & Plank
- Bridge Girders
- Stairs
- Brick Clad Panels
- Risers
- Balconies

Come see Spancrete
at the AIA
Convention & Expo
on May 4–5 at the
Monona Terrace Center
in Madison!
Booth 608 and 610

WEBSITE

www.spancrete.com

Design Details

Downloadable
Specifications &
Load Tables

Image Library

The Spancrete Group, Inc.

WISCONSIN ARCHITECT

Volume 75, Issue 3 - 4

PROJECTS

- | | | | |
|----|---|----|--|
| 6 | West Allis Fire Dept. Station #1
<i>Plunkett Raysich Architects LLP</i> | 16 | Busse Center for Specialty Medicine
<i>Marshall Erdman & Associates</i> |
| 7 | Brady Street Bus Shelter
<i>La Dallman Architects Inc.</i> | 17 | Schlitz Audubon Nature Center
<i>The Kubala Washatko Architects, Inc.</i> |
| 8 | Air Traffic Control Tower—Volk Field
<i>Mead & Hunt Inc.</i> | 18 | Oneida Community Health Center
<i>HGA</i> |
| 9 | Milwaukee Secure Denton Facility
<i>The Durrant Group Inc.</i> | 19 | Northeast Wisconsin MRI Center
<i>Somerville, Inc.</i> |
| 10 | Washington Park Library
<i>HGA</i> | 20 | St. Joseph Outpatient Center
<i>Eppstein Uhen Architects</i>
<i>BLM Architects</i> |
| 11 | Cudahy Family Library
<i>Engberg Anderson Design Partnership</i> | 21 | Performing Arts Center, Aquinas College
<i>Holabird & Root LLC</i> |
| 12 | Pecatonica High School
<i>Hoffman</i> | 22 | YMCA at Pabst Farms
<i>The Zimmerman Design Group</i> |
| 13 | DC Everest Middle School
<i>Somerville Inc.</i> | 23 | Dogwood Center for the Performing Arts
<i>Holabird & Root LLC</i> |
| 14 | St. John's Evangelical Lutheran School (K-8)
<i>MSI General Corporation</i> | 24 | St. Mary's Catholic Faith Community
<i>Plunkett Raysich Architects</i> |
| 15 | Idaho State Capitol Master Planning and Restoration Design
<i>Isthmus Architecture, Inc.</i>
<i>CSHQA</i> | 25 | St. Luke's Community Medical Center at the Woodlands
<i>HGA</i> |

DEPARTMENTS

- | | |
|----|---|
| 5 | GUIDELINES: COMMUNICATIONS
<i>Michael P. Eberle, AIA</i> |
| 26 | DIRECTORY: CONSULTANTS, CONTRACTORS & MANUFACTURERS |
| 42 | INFORM: ARCHITECTURE AND THE MIND – BEYOND INTUITION
<i>John Eberhard, FAIA</i> |
| 43 | INFORM: AIA CONTRACT DOCUMENTS SOFTWARE ALLOWS G-FORMS TO BE COMPLETED IN MICROSOFT® WORD
<i>Phil Simon</i> |
| 44 | INFORM: UPDATE TO AIA CONTRACT DOCUMENTS SOFTWARE Q&A |
| 46 | WISCONSIN ARCHITECTS FOUNDATION ANNUAL REPORT |
| 48 | 2004 CONVENTION & EXPO RECAP |
| 50 | SOCIETY NEWS |

ON THE COVER

West Allis Fire Dept. Station #1 Placed strategically between the kitchen, and dormitory, the traditional brass fire pole promotes swift access to the apparatus room below. Architect: Plunkett Raysich Architects Photography: John J. Korom Photography

WISCONSIN ARCHITECT (ISSN 1083-9178) serves the design and construction industry in Wisconsin with circulation to Architects, Engineers, General Contractors, Business and Interior Designers, Landscape Architects, Certified Planners, Developers, Specifiers, Construction Managers, Facilities Managers, Builders, Manufacturers and Suppliers. *Wisconsin Architect* is the official publication of AIA Wisconsin, A Society of The American Institute of Architects, and is published quarterly by Wisconsin Architect, Inc. © Copyright 2004 Wisconsin Architect, Inc. All rights reserved. This issue or any part thereof may not be reproduced in any form without written permission of the publisher.

Wisconsin Architect, Inc.

Board of Directors:

Michael P. Eberle, AIA
Cherie K. Claussen, AIA
Colin Klos, AIA
Thomas R. Cox, AIA

Editorial Advisory Board

Mark J. Kruser, AIA, *Chair*
Michael E. Bahr, AIA
David Black, AIA
Melissa Destree, AIA
Amy Doyle, Assoc. AIA
Michael P. Eberle, AIA
A. James Gersich, AIA
Robert C. Greenstreet, Assoc. AIA
John G. Horky, AIA
T.J. Morley, AIA
Jeffery R. Musson, AIA
Daniel J. Roarty, AIA
Peter J. Schuyler, AIA
Robert E. Shipley, AIA
Robert S. Wheat, AIA
William M. Babcock, Hon. AIA

Managing Editor

Brenda K. Taylor

Publisher

William M. Babcock, Hon. AIA

Advertising & Editorial Office

321 S. Hamilton St.
Madison, WI 53703-4000
(608) 257-8477
email: wiarchitect@aiaaw.org

Online Media Kit:

www.aiaaw.org/magazine.htm

Subscriptions

Wisconsin Architect is mailed at no charge to all members of AIA Wisconsin and allied professionals. Complimentary subscriptions are available for Wisconsin design and construction individuals upon written request to Wisconsin Architect, 321 S. Hamilton St., Madison, WI 53703. Subscriptions for all others are \$70/ year or \$120/ 2 years. U.S. only. For more information call (608) 257-8477 or e-mail inquiries to wiarchitect@aiaaw.org.

Wisconsin Architect and AIA Wisconsin disclaim liability for statements by the editors, contributors and advertisers.

Postmaster, please send changes of address to:

Wisconsin Architect
321 S. Hamilton St.
Madison, WI 53703



Printed on Recycled Paper

**PELLA COMMERCIAL DIVISION WOULD LIKE TO
OFFER ARCHITECTS SOME FOOD FOR THOUGHT.
AND LUNCH.**



Pella Commercial is making it easier than ever for architects to receive the continuing education they need to maintain their AIA membership, CSI certification, and/or architectural license. As an AIA/CES Registered Provider Charter Member since 1995, Pella Commercial is committed to developing quality learning activities in accordance with AIA/CES and Health/Safety/Welfare (HSW) criteria.

Programs will be presented by Pella Commercial representatives and cover a broad range of fenestration topics. Pella's programs are typically one hour in length, so architects receive one Learning Unit (LU) and one hour of HSW.

Pella Commercial helps make getting the training you need as easy as possible — you can even do it over lunch. Contact us today to set up your educational box-lunch program. And feed more than just your mind.



© 2004 Pella Corporation

Ver Halen Inc.
Appleton • Brookfield
Green Bay • Greenfield • Madison
866-434-6443
www.pella.com



**COMMERCIAL
DIVISION**

2004 AIA Wisconsin Board of Directors: Michael P. Eberle, AIA, *President*; Cherie K. Claussen, AIA, *Vice President*; Colin H. Klos, AIA, *Secretary/Treasurer*; Thomas R. Cox, AIA, *Past President*; Sean J. Bujold, AIA; Kent A. Calloway, AIA; Gregory A. Douglas, AIA; Gregory P. Fischer, AIA; Patricia A. Frost, AIA; Paul A. Grzeszczak, AIA; Henry A. Kosarzycki, AIA; Amy Kox, AIA; Mark D. Lane, AIA; Stuart LaRose, AIA; Paul F. Martzke, AIA; David R. Oberbeck, AIA; Louis Wasserman, AIA; Michael A. West, AIA; David Zach (*Professional Affiliate Representative*); Matthew Dumich, Assoc. AIA (*Associate Representative*); Duane D. Stegall, Assoc. AIA (*Associate Representative*); Matthew Fochs (*UWM Student Representative*); William M. Babcock, Hon. AIA, *Executive Director*.

AIA Wisconsin, A Society of the American Institute of Architects

321 South Hamilton Street
Madison, Wisconsin 53703
Phone (608) 257-8477
E-mail: aiaw@aiaw.org
Web page: www.aiaw.org

Wisconsin Architects Foundation Board of Directors: 321 S. Hamilton St., Madison, Wisconsin 53703; phone (608) 257-8477. James W. Miller, FAIA, *President*; James Shields, AIA, *Vice President*; Christine M. Ahl-Ludwig, *Secretary/Treasurer*; Patrick Conway, AIA; William Doyle, AIA; Ralph Jackson, AIA; Allyson Nemecek, AIA; Lawrence Schnuck, AIA; Michael Swinghammer, AIA; William M. Babcock, Hon. AIA, *Executive Director*.

North Central Region AIA: William D. Beyer, FAIA; A. James Gersich, AIA, *Directors*.

AIA Southeast Wisconsin: Stuart C. LaRose, AIA, *President*; Mark D. Lane, AIA, *Vice President*; , *Secretary/Treasurer*.

AIA Southwest Wisconsin: Paul A. Grzeszczak, AIA, *President*; Gregory P. Fischer, AIA, *Vice President*; Melissa Destree, AIA, *Secretary/Treasurer*.

AIA Northeast Wisconsin: Amy L. Kox, AIA, *President*; Gregory A. Douglas, AIA, *Vice President*; , *Secretary/Treasurer*.

AIA Northwest Wisconsin: Michael W. Swinghammer, AIA, *President*; David R. Oberbeck, AIA, *Vice President*; Sean J. Bujold, AIA, *Secretary/Treasurer*.

AIA Wisconsin Staff: William Babcock, Hon. AIA, *Executive Director*
Karen Engelhart, *Business Manager*
Mary Orella, *Administration Manager*
Brenda Taylor, *Communications Manager*
Tracy Drinkwater, *Administrative Assistant*

AIA Wisconsin
321 S. Hamilton St., Madison, WI 53703
Phone: (608) 257-8477
E-mail: aiaw@aiaw.org
Web page: www.aiaw.org

Architects have a positive impact on our communities. AIA Wisconsin members should be proud and recognized for their significant contributions.

A Communications Focus Group has been established to explore and develop recommendations for improving communications with members and other audiences. As busy architects, we look for and find information in many places. Each month, the amount of information delivered to our mailboxes and emailed to our desktops grows.

What is your preference for delivery of AIA news, program announcements, legislative issues and articles on our projects? When do you like paper? When do you prefer electronic delivery? Your input is welcomed.

This issue of *Wisconsin Architect* features projects designed by AIA Wisconsin member architects. The magazine is able to feature a variety of healthcare, historic restoration, public and recreation projects thanks to members submitting their work. Inform articles also are contributed by members. In addition, the annual Consultants Directory included in this issue will make identifying consultants, contractors, manufacturers and other allied professionals much easier. Thank you to everyone who contributed to this issue of *Wisconsin Architect*.

To volunteer an article, join a committee or offer your input, please contact AIA Wisconsin at info@aiaaw.org, 1-800-ARCHITECT or (608) 257-8477.

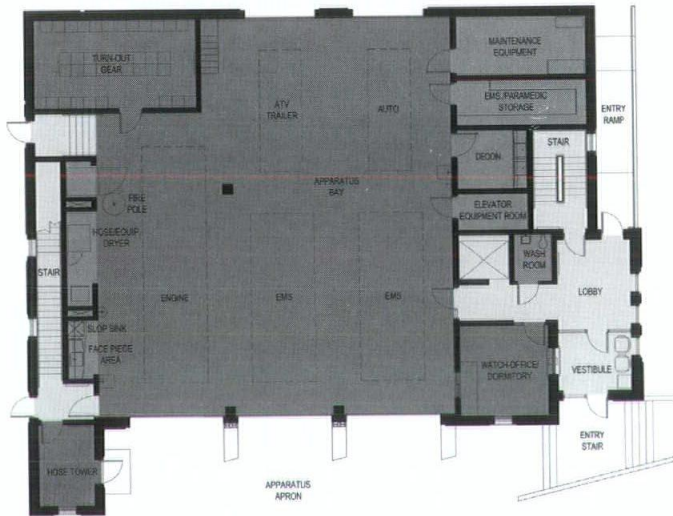
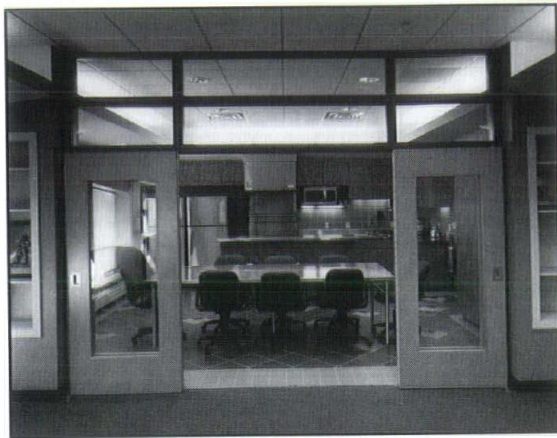
*As busy
architects, we
look for and find
information in
many places.*

Plunkett Raysich
Architects LLP

CONTRACTOR:

WB Corporation

Photography:
John J. Korom Photography



Located on a narrow site near the center of West Allis, a new fire station energizes a tired commercial stretch of National Avenue, engaging the street and community with a whimsical interpretation of civic architecture.

Typical of most fire stations, the program consists of an apparatus room, gear storage and watch room, as well as living quarters for the station's personnel and on-site parking. The program also includes a public lobby, hose tower and a traditional brass fire pole, three historical components which strongly inform the building's shape, massing and ultimate design. The building harmonizes with the adjacent 1930s-era fire station, which is currently being renovated into administrative offices at the west end of the site.

The new 10,800 square-foot two-story building prominently anchors the southeast corner of the tiny one-third acre plot. At the center of a courtyard will stand a firefighters' memorial.

A three-story stair and hose tower is capped with an exaggerated roof edge, held up with 10-foot long ladder sections to draw a literal connection to the very instruments used in firefighting. The public entrance and lobby on the southeast corner of the building garner attention in the same manner. Here, four ladder brackets hold the clay tile roof overhead like modern day caryatids. Together these components bookend a large single opening in the massive brick façade, showcasing the station's primary space, a three bay apparatus room and its shiny red vehicles.

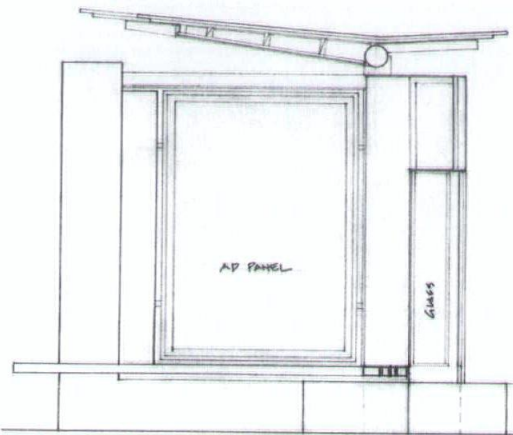
Directly above the glass paneled doors are the full-height windows of the kitchen, dayroom and library, providing ample daylight to these south-facing rooms. As a composition, this expansive glass opening activates the street both day and night. The heavy steel frontispiece, with its massive ladder columns and steel flanged beams, celebrates the heroic role played by this fire station.



This project was commissioned by a neighborhood business group determined to transform a series of neglected urban spaces. It is the first completed phase of a larger initiative, the Crossroads Project, which proposes a series of visionary civic spaces within a vast derelict zone beneath the 1925 Holton Street Viaduct, a structure carrying a major street across the Milwaukee River Valley. The Bus Shelter, a haven for city bus passengers, marks the gateway to the Crossroads Project and creates a respite for bicyclists and pedestrians approaching the intersection from multiple directions, connecting these elements with Downtown Milwaukee, Brady Street's resurgent retail zone and residential neighborhoods on either side of the river.

The shelter is set within a platform defined by concrete and stone walls that are shaped and folded to serve as benches, retaining walls and structural elements. Mahogany benches rest upon interlocking concrete and steel supports, forming an L-shaped plan that invites varied seating positions and protects users from the elements while allowing clear views to approaching buses. Large steel sash glass panels serve to block wind and frame views down a connecting pedestrian path wood components wrap the steel elements that come into direct contact with the occupants. Revealing the forces of nature, the bus shelter incorporates careful attention to such details as a butterfly roof that serves to collect rainwater, draining into a cast concrete basin below.

Taking almost four years to complete, the project represents a commitment to urban regeneration that demands thoughtful consideration of seemingly inconsequential or forgotten spaces within the city's built environment. Designed on a neglected street corner, the program of a Bus Shelter challenges one to re-think the concept of public space, as it is no longer embodied by the town square, but rather by abrupt, incidental interactions in random occurrences and spaces such as bus shelters.



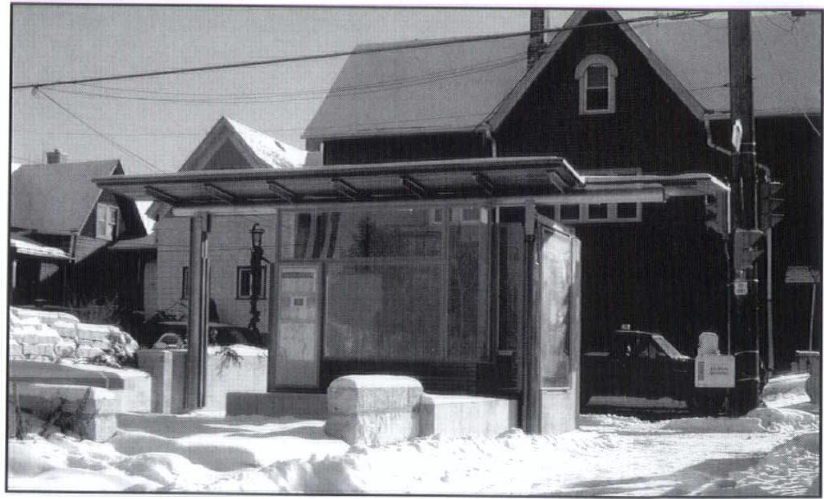
ARCHITECT:

La Dallman
Architects Inc.

CONTRACTOR:

Ferrante
Construction

Photography:
La Dallman Architects Inc



Mead &
Hunt Inc.

Photography:
Lyle Leverentz, AIA



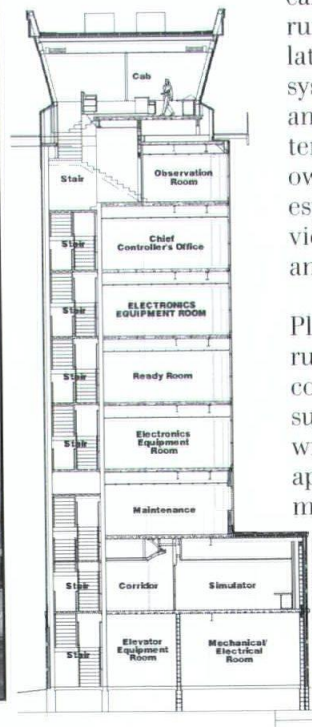
An important project for the Wisconsin Air National Guard, the new Volk Field air traffic control tower was designed to reflect the Guard's forward-thinking philosophy and high-tech ideology. This project was conceived because the air base is expected to grow.

The owner's requirements included a facility that was harmonious with other base buildings, used low-maintenance materials, was no larger than 8,600 square feet, increased occupant and cab level visibility, included spaces for training, simulator equipment, lockers and shower facilities, offices, a ready room, an observation level, electrical equipment and mechanical/communication systems, kept the mechanical systems for the cab independent from the rest of the building, and coordinated extremely complicated base communications systems.

To create the right image, curved masonry walls and glazed curtainwalls were incorporated into the design. A convex curtainwall system was placed on the airfield side of the tower, giving a panoramic view of the runway and vicinity. This also turned a potentially small and enclosed area into an open space.

The observation level was placed under the cab level to give visitors a dramatic view of the runway. A concrete core allowed for the installation of mechanical and communications systems on each floor level and for the stairs and elevator. Modern materials with low-maintenance characteristics were chosen to satisfy owner requirements. The design of the cab was especially important. Tower personnel interviews revealed the need for streamlined tasks and an ergonomic environment.

Placing the new facility farther back from the runway had many advantages. Controllers could better view flight maneuvers and surrounding grounds. More importantly, it will allow for future expansion of the runway apron for additional aircraft parking during maneuvers.



A 1,048 bed multi-purpose high rise was needed to process and hold probation and parole violators and newly sentenced prisoners entering the state correctional system, as well as provide drug and alcohol treatment.

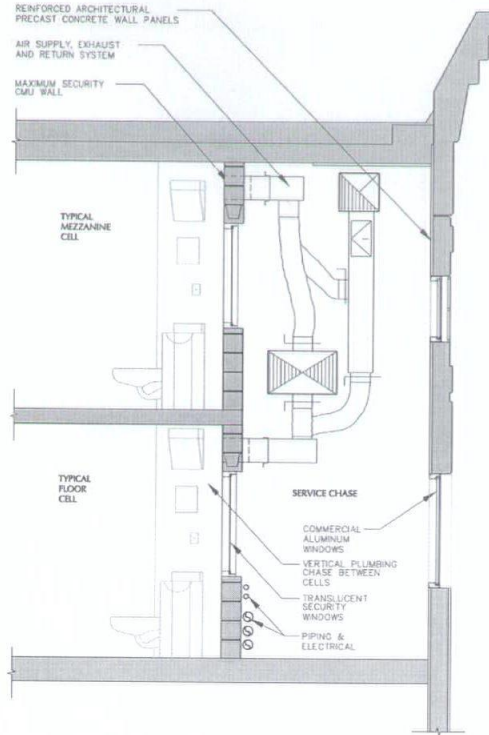
The urban context and limited 1.7-acre site are uncommon for large prison projects and presented significant challenges in its irregular shape and 20-foot change in elevation. Additionally, the entire west edge of the site abuts a massive concrete retaining wall and a 40-foot drop to an interstate highway below.

The design features a double-walled perimeter chase. The interior wall of the chase provides the protection required for a maximum-security prison, thus allowing the exterior wall—free of security restrictions—to take on characteristics more typical of adjacent urban office buildings. The interstitial space became the mechanical chase, housing the systems normally found in the ceiling plenum between floors. The plenum space for each floor is eliminated, allowing the building height to be reduced. The employment of the perimeter chase also allows maintenance staff access to building systems without having to enter and disrupt secure inmate areas.

The exterior of the facility was designed to look like a downtown office building. The two-story masonry and stone base features support functions for inmates, staff and the public. The housing floors are clad in multi-textured precast panels with large tinted windows. Individual cells get borrowed light through the perimeter chase space.

Visitors communicate with inmates via real time audio/visual stations in the public lobby. Inmates do not leave the housing pods and visiting public do not cross into the secure perimeter. This provides greater security with less staff and reduces inmate movement. Additional stations allow local visitors to communicate with inmates held at facilities throughout the country.

Internally, each floor layout maximizes security staff utilization by pairing housing unit control stations. This allows a single officer to manage two units and supervisors can oversee an entire 200-bed floor.



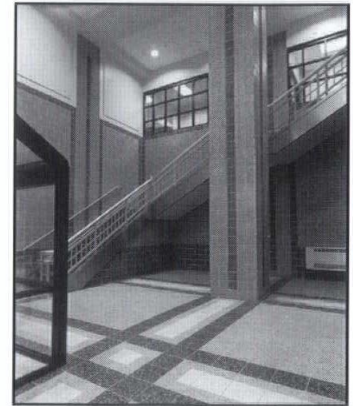
ARCHITECT:

The Durrant
Group Inc.

CONTRACTOR:

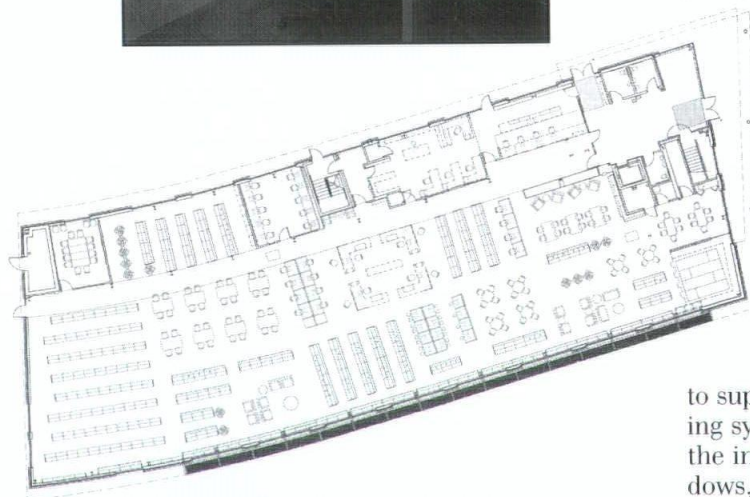
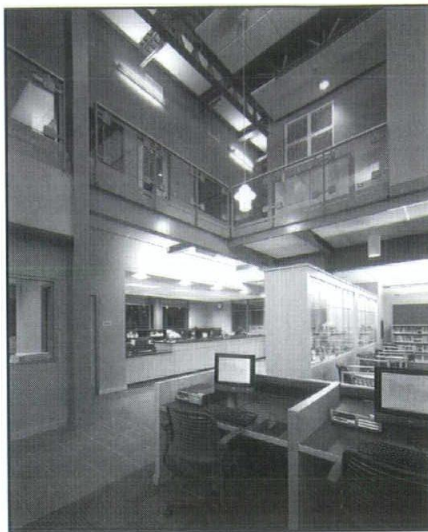
The Durrant
Group Inc.

Photography: Edward Purcell
Architectural Photography



HGA

CONTRACTOR:

Creative
Constructors,
LLCPhotography: John J.
Korom Photography

The new library was designed to meet the needs of the surrounding neighborhoods while providing the Milwaukee Public Library system with a high-performance, energy-efficient building.

Upon entering the new library, customers have access to a collection of 82,000 volumes of books, periodicals, newspapers, videos, CDs and DVDs. Special collections include an adult literacy collection, an African American collection, a job and career collection and collections that meet the information needs of the community. Many patrons come to the library to use computers for Internet research, compiling reports, job searching, resume writing, developing business plans and accessing personal E-mail. The new facility has 40 computers, including ten in the Computer Center.

The library uses a variety of energy-saving strategies, including efficient glass, daylighting, automated lighting controls and geothermal heat pumps, to reduce the energy usage of the building.

Ground-source heat pumps use the earth as a constant temperature source to supplement the building's heating and cooling systems. In addition, by carefully selecting the insulating properties of the exterior windows, controlling direct sunlight and reducing the amount of electrical lighting used during the daytime, the mechanical systems of the building were able to be sized much smaller than a building using conventional design.

The incorporation of natural daylight is the cornerstone of the energy-efficient design of the library. The orientation and siting of the building were selected in part to maximize daylight penetration. The large reading room has large south-facing windows that provide ample daylight and expansive views to the park across the street. To avoid glare and heat, external sunshades and internal light shelves passively control the sun. The extensive use of natural light allows automatic controls for the electric lighting systems to turn portions of the lights off during the daytime.

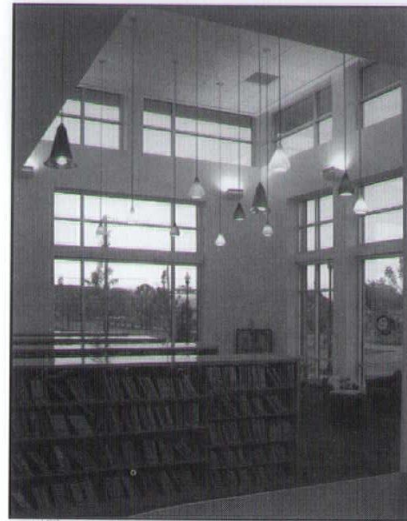


The library is the “lantern,” both figuratively and literally, for the redevelopment of the heart of downtown. The facility uses familiar materials such as brick, copper and glass, assembled in a dramatic sculpture of solids and voids. This assembly of volumes clad in a variety of materials creates an image for the building and boundaries for a new civic space. As part of the larger development, the library building forms a foreground controlled view that partially shields the residential portion from the rail tracks and the meat processing operations.

Because of the site conditions to the west, the public entry and the majority of the internal public spaces of the library are oriented towards the new public garden and courtyard to the east. These new civic spaces (the only ones in the downtown) and Winter Garden are aligned axially with the city’s water tower, another widely recognizable civic icon, and set the thematic direction for the design of a future condominium building to the east. Parking for this development is shared with other commercial and retail components to the south.

This 27,000-square-foot library is home to 120,000 volumes of books and multimedia split between the adult, young adult, children and local history collections. The library also offers a state-of-the-art public use computer room, group study rooms, adult reading room with a fireplace, children’s story time room and Friends of the Library gift shop. Library materials are displayed in a spacious manner, providing the library patron with a relaxed and gracious environment in which to browse. Interior spaces are arranged to give the patron the opportunity to sit and read in larger areas or in smaller secluded glass reading bays.

The large amounts of glass that bathe the interior with natural light by day serve as glowing lanterns that illuminate the entire area by night. The transparency of the building skin affords a multitude of controlled and framed views from and into the various public spaces. The two copper clad reading rooms, one on each end of the building, along with the Winter Garden, become civic markers for the library.



LEGEND

1. ENTRY
2. CIRCULATION DESK
3. REFERENCE DESK / ADULT CIRCULATION
4. READING ROOM
5. COMPUTER ROOM
6. STAFF AREA
7. CHILDRENS COLLECTION
8. MEETING ROOM
9. STORY TIME ROOM
10. READING AREA / WINTER GARDEN
11. COMMUNITY MEETING ROOM
12. GARDEN
13. COURTYARD
14. FUTURE RESIDENTIAL CONDOMINIUM



ARCHITECT:

Hoffman

CONTRACTOR:

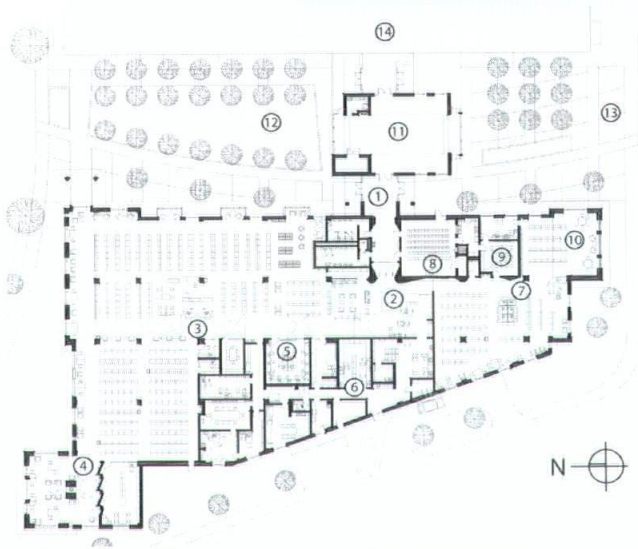
Hoffman

Photography:
Phil Weston

The new 110,000-square-foot, 300-student, high school is sited on 40 acres previously used for agricultural and located on Main Street.

The concept of the building as a town square satisfies the owner's program in a unique way. The new facility was organized around a naturally daylit central core that provides both indoor and outdoor gathering space. These gathering spaces provide flexibility for a variety of community and educational venues.

Natural daylighting enters the building through perimeter glazing at the interior courtyard and clerestory windows in the Commons. Programmed spaces adjacent to the interior courtyard and Commons receive indirect natural daylighting, despite not having exterior windows. Interior corridors are organized around the perimeter of this naturally daylit core. This design distinction eliminates visual classroom disruptions, while the courtyard is occupied, and reduces interior lighting demands on heavily used corridor spaces. The idea of Town Square is implied in the perimeter delineation of the building.



Somerville Inc.

CONTRACTOR:

Adolfson
& Peterson
ConstructionPhotography:
T-Bo Studio

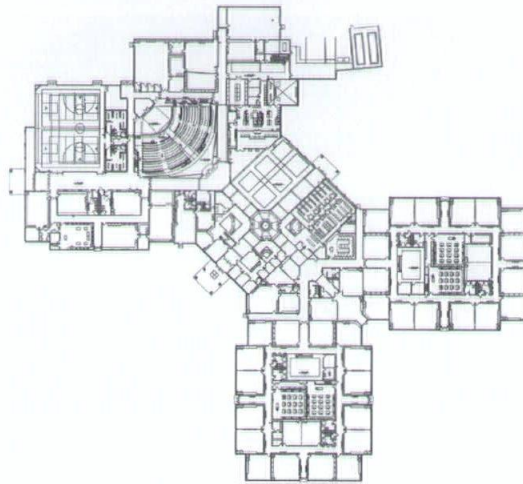
A community or village concept was the focus for the design of the school. This idea would provide the transitional student between elementary school and high school the feeling of security within his or her community and a sense of belonging with the student body of the entire village.

At the center of the building, the village square provides the cornerstone of the community, which centralizes administrative offices, the library, cafeteria, auditorium and student services. It also serves as the hub to each wing, or street, of learning centers. Future expansion was incorporated in the design layout with provisions for another wing to be added from the hub, as well as expansion of each of the existing wings.

Special consideration was given to the exterior design of the school to preserve the integrity of the surrounding residential area by incorporating a single-story structure with brick/block exterior walls and a partially pitched standing seam metal roof.

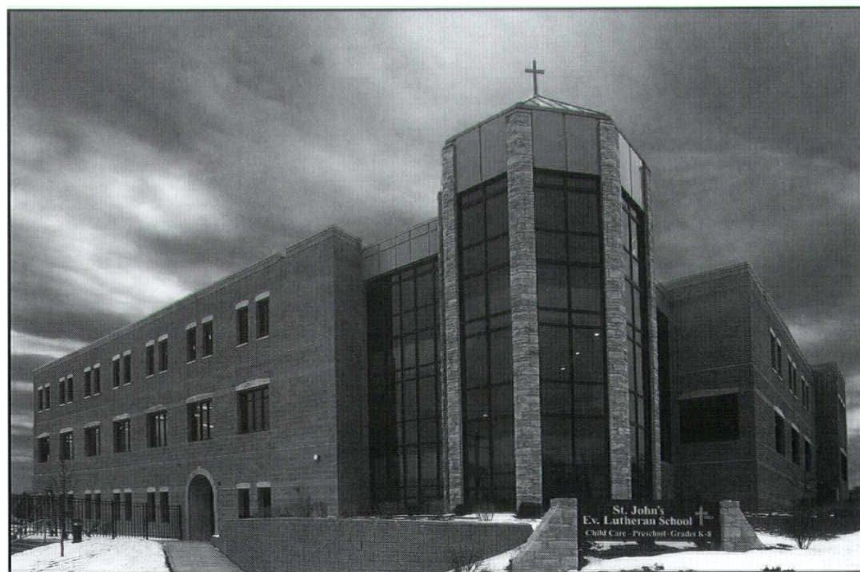
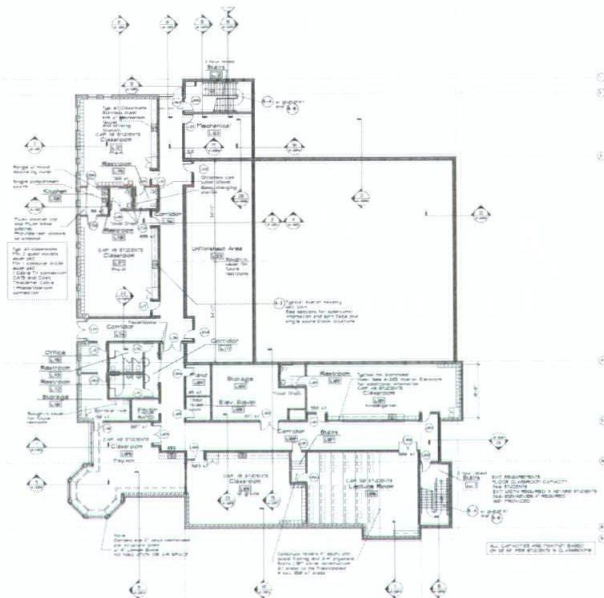
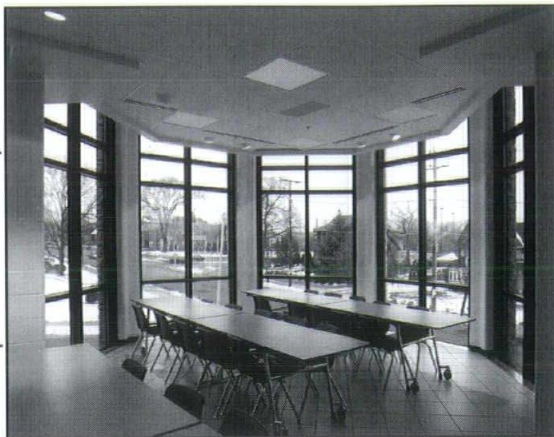
The 169,800-square-foot school contains two academic wings separated by grade level, an art and technical educational wing and a dedicated music wing. The central core houses administration, guidance counseling, commons area, IMC and computer labs. By taking advantage of being able to include much needed district services during the design of the new school, the facility also includes an expansive kitchen area that can service the entire district.

The design has accomplished its goal of providing a student friendly educational environment, along with a feeling of community, with a building that functions as the users expected, provides a low maintenance facility and allows for ease of expansion.



MSI General
Corporation

CONTRACTOR:

MSI General
CorporationPhotography:
Blackdog Studios

One of the first design challenges was the site. The existing school building needed to be demolished before any site preparation could begin. Coordinating this effectively saved time and money for the owner.

The site had a 14' to 16' drop from the back to the front. This allowed for on-grade entrance/exits to the lowest level of the building. The exposed lower level wall gave the architectural appearance of a much taller and dominant facade. Large retaining walls were required to terrace the land.

The corner site demanded a response to hold the edges of the site.

The materials for the building were chosen for their relationship to context, such as the existing church across the street. Maintenance-free exteriors and tinted glass for sun control during daytime classes were utilized. The mass of the building is broken down into small more human scale forms connected with figurative glass gaskets at tower staircases. The corner element became a tower distinctively marking the school and a visible architectural object that can be seen from many neighborhood sightlines.

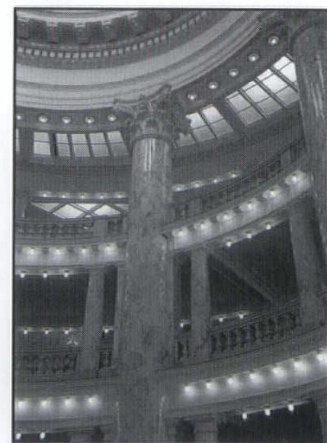
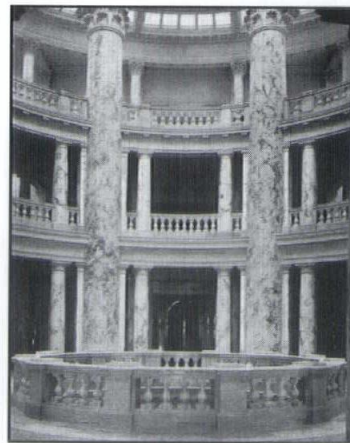
Using smooth and staightened brick patterns created variation and texture. The walls and the windows are recessed to look massive at the bottom and more delicate at the top. Pre-patinated copper caps the tower and helps make the school fit into the neighborhood. Decorative ironwork near the entrance is just one more detail that greets students and visitor alike. A large cross of glass block glows during the nighttime from the stair tower on the backside of the building.

The citizens of Idaho built their state capitol when their population numbered barely 150,000. Construction occurred in two phases to insure the appropriate level of funding would be in place to build a suitably elegant building. The exterior of the Beau-Arts inspired capitol is constructed of dusty auburn sandstone that was quarried just a few miles away from the building site. Architect John E. Tourtellotte used color and light effectively in his design, the exterior of the building is visually nested within surrounding foothills of the same reddish shade. The interior rotunda, finished in white marble and immense white scagliola columns, glimmered with reflective natural light before the skylights and interior light shafts were closed. The architect had stated that his intention was to express the ambitions and noble aspirations of Idaho's residents; his efforts remain appreciated nearly one hundred years later.

The Idaho Legislature formed the Idaho State Capitol Commission in 1998. The commission was charged with maintaining and preserving the architectural integrity of the capitol and set into motion plans for a multi-year restoration and refurbishment of the building. The group took as its first step the preparation of a comprehensive Master Plan, which was completed in April 2001. It provides a historical narrative concerning the construction of the building and provided the results of a preliminary condition survey that included the analysis of exterior and interior building assemblies and structural, mechanical, electrical and communications systems. The document provides recommendations for the preservation of the building and proposes a scope of work and timeline for its completion.

In preparing design documents, the biggest challenge was the integration of contemporary systems and communication technology within the historic interior. New building infrastructure will be carefully inserted from the garden level through the fourth floor. Much of it will follow the configuration of light shafts and pipe chases original to the building with new horizontal distribution zones for piping, electrical, data, security and communication systems. A comprehensive bid document package was submitted for final review. Other Wisconsin firms involved in the project included Affiliated Engineers, Inc., assisting with systems design and J.P. Cullen and Sons with cost estimating.

The project awaits final funding authorization. In a tight economy, it is anticipated that the project could be on hold for a number of years.



Marshall Erdman
& Associates

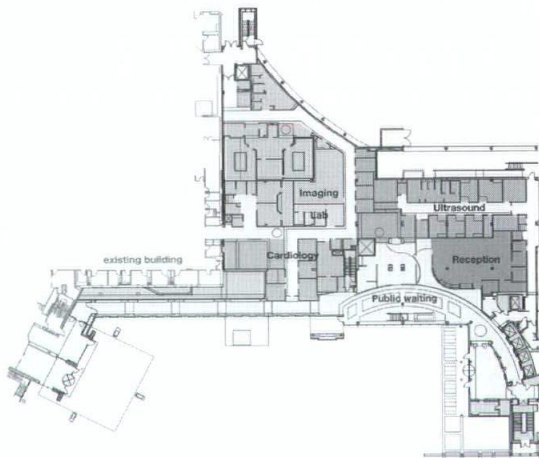
CONTRACTOR:

Marshall Erdman
& Associates

Photography: Mike
Rebholz Photography



The site's constricted nature provided an opportunity to embrace the existing architecture and seamlessly link the expansion with the hospital for continuity and convenience. The terrazzo floor was extended from the hospital into the expansion to clearly link both areas. By introducing two new colors into the terrazzo palette, the designer was able to signal a departure from one area for the next. If patients enter at the wrong entrance, they immediately recognize the path to the correct location without needing to return outside.



At approximately 27,000 square feet per floor, levels one and two comprise expanded outpatient services for Northwest Community Hospital, including expanded cardiology and diagnostics (with an open MRI), an ultrasound suite, comprehensive breast center, endoscopy center and expanded lab services.

Floors three through eight accommodate specialty physician offices at approximately 21,800 square feet per floor, and are linked to seven floors of patient and staff parking. Services include neurology, OB/GYN, pediatrics, plastic surgery and urology.

The graceful sweep of the curtain wall and the elegant glass and steel elements elevate the hospital's visibility in this competitive Chicago suburb. Such amenities as fine finishes, subtle lighting, fine art, a water feature, natural lighting and operational efficiencies create a soothing and relaxing environment to attract more patients and recruit and retain the most highly skilled staff.

The Center reduces patient anxiety and contributes to a more positive experience by anticipating and responding to patients' fundamental questions about where they need to go, what they need to do, and who they need to see for help. Architectural and design elements provide subtle wayfinding clues in an intelligible, simple way. This design philosophy communicates with all patients, including those with a limited ability to read the signage.



Situated on 185 acres along the shores of Lake Michigan, the new Dorothy K. Valier Environmental Learning Center at Schlitz Audubon Nature Center opened to the public in May of 2003. This beautiful new 39,000 square foot "green" facility is one of the most environmentally sensitive buildings in the nation.

The architects were commissioned to design a building that preserves the natural sanctuary of the site and educates the public about sustainability and the natural world. The primary design challenge was to integrate sustainable design principles into a highly functional and aesthetically pleasing building.

The building employs a stable, well-insulated, massive and self-shading shell. This long lasting and energy efficient building design helps create an "energy flywheel" to stay cool in summer and warm in winter, reducing the center's reliance on both energy and technology. Supplemental heating and cooling is provided by a geothermal heat pump. A roof-mounted 10kw photovoltaic system provides up to 10% of facility energy needs. Stormwater is collected in an outdoor rain garden.

Sustainably harvested wood is used throughout. Outdoor porches are supported by logs cut from White Pine trees originally planted in the 1940's by naturalist Aldo Leopold. These expansive outdoor porches offer a transition for visitors and create welcome gathering places to view the woods and lake beyond. The naturally ventilated Great Hall incorporates site harvested spruce timbers.

Natural daylight fills the classrooms and hallway. Automatic sensors turn lights on and off. Classroom windows and hallway transom windows may be opened to allow natural ventilation and improved cross ventilation.

The Hearth Room located near the Great Hall provides comfortable space for visitors and staff. Designed to accommodate 180 people, the auditorium features advanced digital graphics and sound capabilities. Side windows are scaled to allow views to the outside by small children.



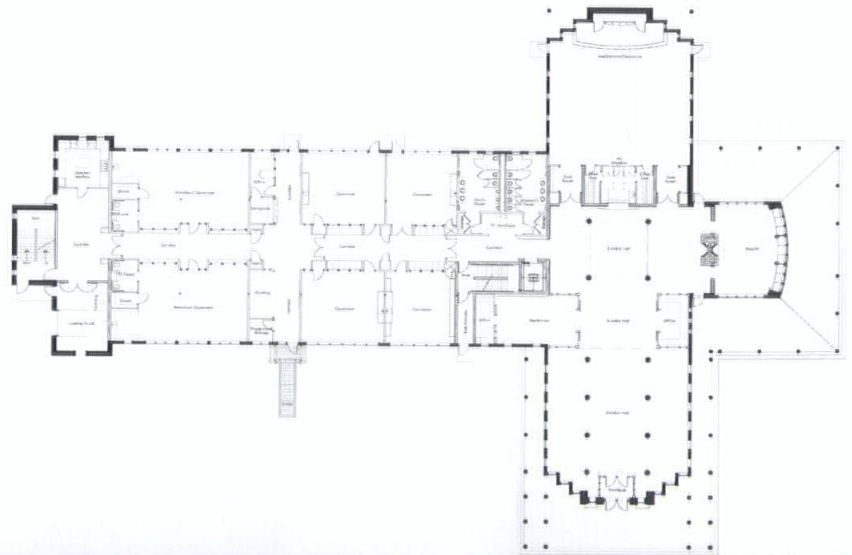
ARCHITECT:

The Kubala
Washatko
Architects, Inc.

CONTRACTOR:

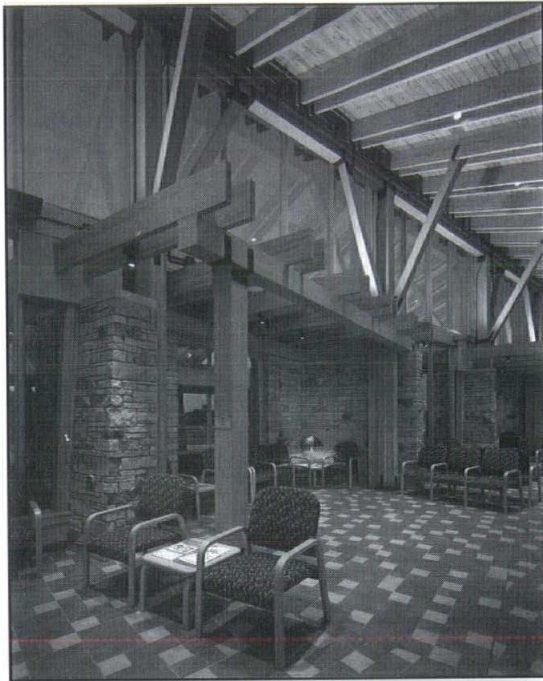
CMA of
Milwaukee, Inc.

Photography: Heffoto, Inc.



HGA

CONTRACTOR:

The Selmer
CompanyPhotography:
Photosmith

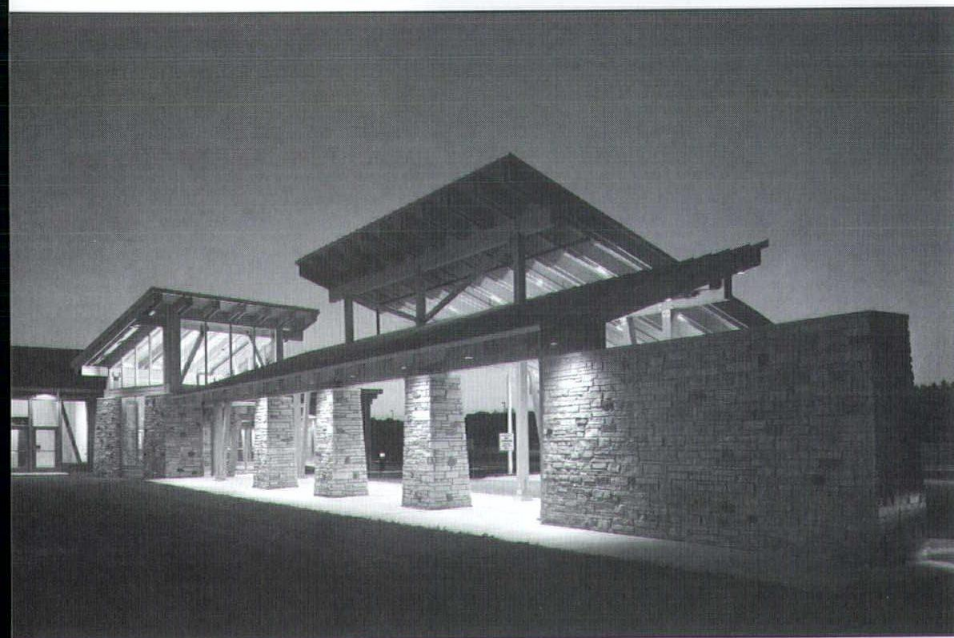
Faced with the rapid growth of the local Native American community during the 1990s, the Oneida Nation realized their existing 23,000 square-foot clinic was no longer able to accommodate the growing and diverse needs of its community. Built in the 1970s, the clinic shared services with an adjoining skilled nursing facility, which was also bursting at the seams and limited the clinic's future growth. Severe space limitations required administrative offices to be relocated to several portable trailers in the parking lot so the clinic could better accommodate patient and staff needs.

Reestablishment of native plants and herbs combined with a natural system of storm water management was a tribal requirement of the building project. The eastern side of the site is maintained as a natural storm water detention area. The siting of the health center carefully integrates elements of reforestation, prairie re-establishment and storm water retention in the new wetland zone with the system of paths.

The new health center provides state-of-the-art facilities accommodating at its core a full-service medical clinic. The clinic is designed to be divided into separate service specialties to create greater efficiencies for the patients and staff.

The facility also houses dental and optical clinics, outpatient diagnostic services, pharmacy services, community outreach offices and the clinic's business and administrative offices. Immediately adjacent to the building's main entry is a large, dividable conference room that serves as additional space for patient education and community outreach. This space is available to various tribal organizations for after-hours functions.

This project is organized along a stone, timber and glass spine. This spine functions as the main public circulation for various clinical and administrative services. Stone and detailed glass alcoves provide for patient and visitor waiting. These materials pay tribute to the Nation's rich Native American history.



Somerville, Inc.

CONTRACTOR:

Frank Zeise
Construction

This new building for Northeast Wisconsin MRI Center is located in Bellevue, Wisconsin. The owner required a facility for the treatment of patients in a calming, progressive atmosphere while also providing an efficient working environment for its main offices. These public and private functions needed to coexist in a single building with interconnected circulation. The owner also desired a contemporary, noteworthy design that would set a precedent for the community.



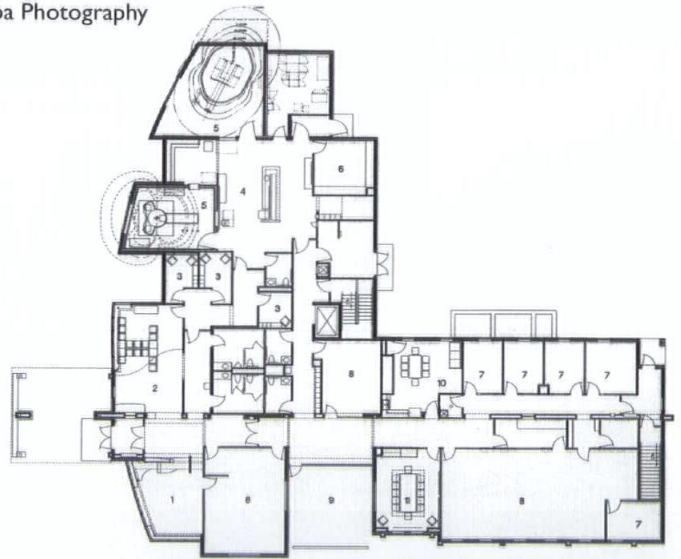
Photography: Turba Photography

The two MRI scan rooms have stringent planning requirements for exterior vehicular traffic, ferrous materials, such as steel structural members, and vibration concerns; all of which affect the final imaging quality. These demands drove the layout and building form.

The office, or private portion, of the building has plenty of natural light with visual access to the exterior for all staff members.

The 17,000 square foot facility contains 11,000 square feet of finished space on the main level with the remaining area in the basement for medical record and general storage. The building is oriented on site to align with a nearby main thoroughfare.

The vernacular forms and materials of the building are borrowed from agricultural buildings and homesteads in the area. The metal roofing and shed roofs are reminiscent of machinery buildings while the expanses of glass add a contemporary feel to the building's character. The dynamic arc across the façade is derived from the geometry of the magnetic fields or gauss lines produced by the MRI units themselves. This concept was carried through into the floor patterns of the tile and carpet.

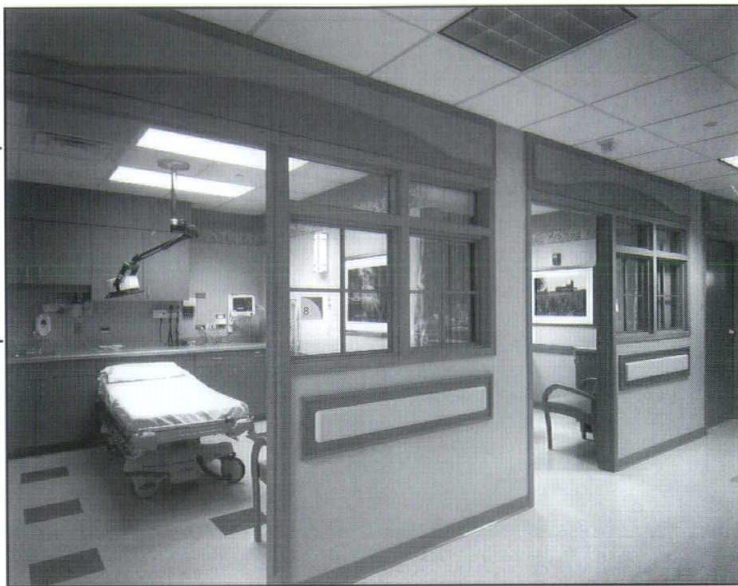


Eppstein Uhen
Architects
& BLM Architects

CONTRACTOR:

Hunzinger
Construction

Photography: John J.
Korom Photography

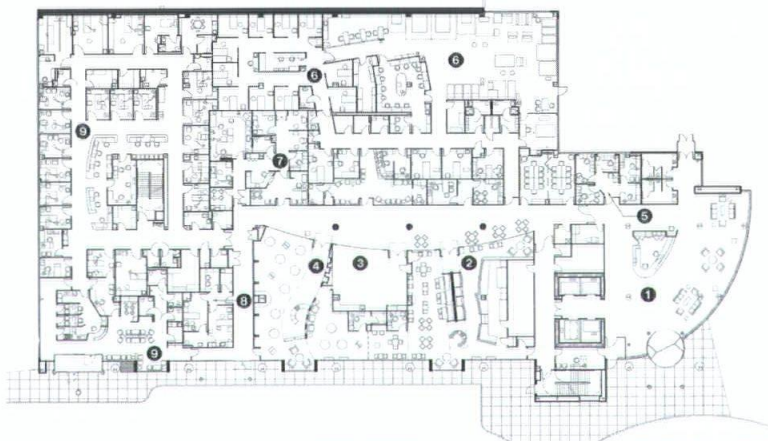


The site was chosen for visibility and ease of access for all patients, while allowing for future growth.

The front door is contained within a gently curved glass entry piece, clearly identifying it for those new to the building. A juxtaposed curved canopy at the front door allows covered drop-off for patients while providing a design feature that unites the building to its adjacent, five-story parking garage. The two secondary entry points to the building are identified by smaller canopies in a similar vernacular.

A vertical curved glass entry piece became central to the design concept, with support from horizontal ribbon windows in order to maximize the connection to natural light and outdoor spaces. The concept was further unified by vertically projecting bays and vertical stair towers. To anchor the light airy openness of the glazed components, the building is clad in rich limestone panels.

The interior spaces work in conjunction with the exterior; some interior wall surfaces in focal areas are clad with the same limestone as the outside. The welcoming and hospitality-focused interior design palette was created to present timeless "color without color" through the use of natural materials and subtle natural colors, playing off the color palette of the exterior stone. The texture of materials used throughout the interior helped to bring a familiarity and human scale to the entire building and unified the design concept. The design team also used the interior finishes to illustrate the entry points to departments to ensure clear and efficient circulation for both staff and patients.



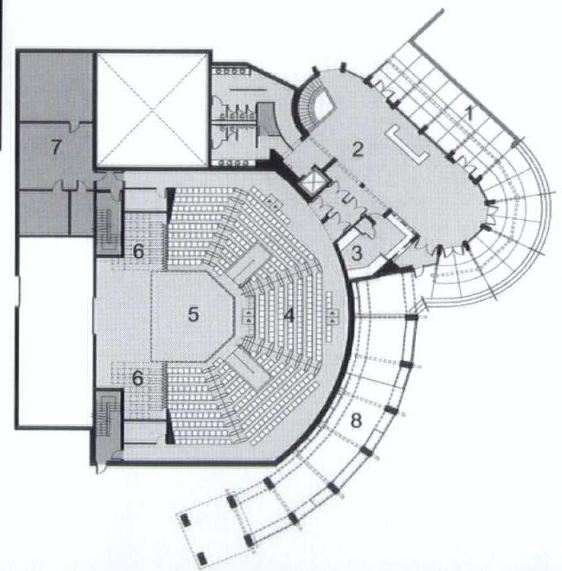
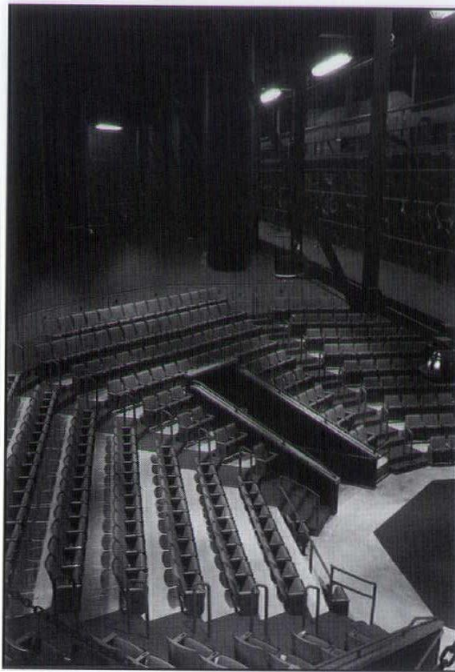
Three parties collaborated to turn a vision into a reality: a private college, private secondary school and community theatre. The results are a new 28,500 sq. ft. theatre facility on a college campus.

Located on a private college campus, the site is a scenic wooded area that fronts a ravine. Exterior decks and terraces allow people to enjoy the natural beauty of the area. The theatre lobby, with its large windows, encourages people to experience the surrounding environment and accommodates pre-performance receptions.

The design captures the charm of the community theatre's former home, while doubling the audience size from 210 to 410. The new facility features a thrust stage and stepped, stadium-style seats. All seats are within 36 feet of center stage, ensuring audience intimacy and encouraging patrons to walk on stage to experience the set. Dressing/makeup rooms and adjoined green room, areas for instruction, production and storage of costumes, props and scenery are all tucked under the seating at a lower level.

A 180-seat black box theatre, fully equipped for lighting and sound, includes flexible staging, and separate access for actors. The black box duplicates the main stage size to double as a rehearsal hall.

The project has become a landmark for the area. Drawing heavily on the surrounding site, the design features a two-floor lobby with direct views of the wooded ravine. The site and facility design allowed the community theatre to recreate the charm of their former home, while increasing audience size.



ARCHITECT:

Holabird &
Root LLC

CONTRACTOR:

Erhardt
Construction

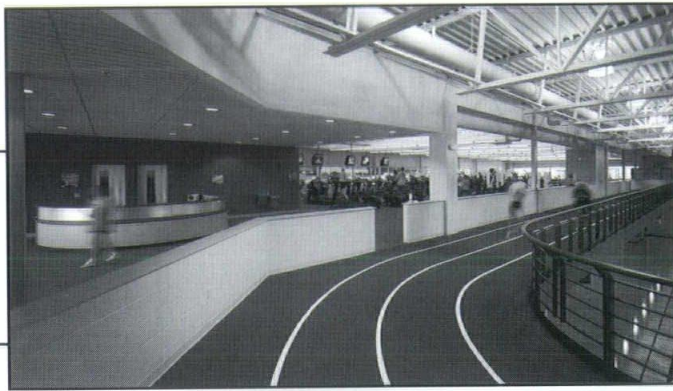
Photography: People
Places & Things
Photographics

The Zimmerman
Design Group

CONTRACTOR:

Oliver
Construction

Photography: Greg
Gent Studios

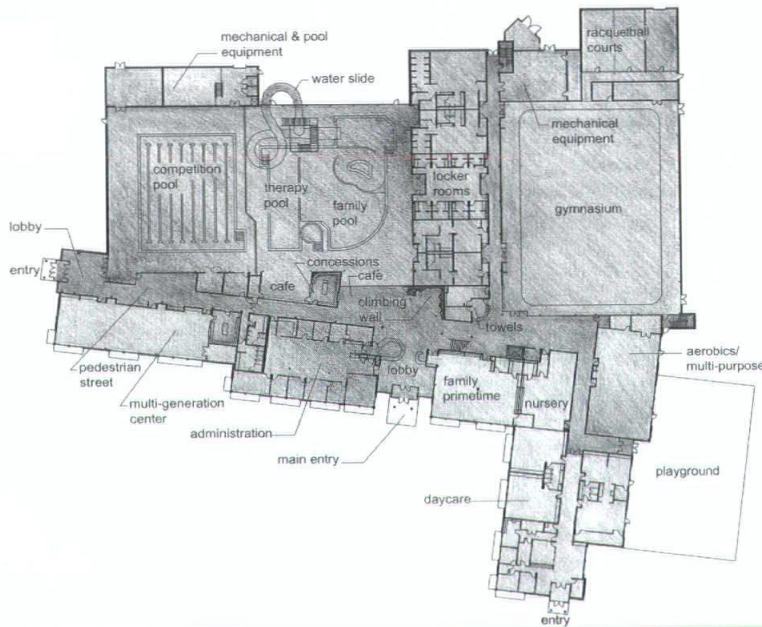


The building's functions were organized along a linear two-story pedestrian street, which permits access and views of most activities as one moves through the building.

One of the most significant organizing goals was to permit views of multiple activities from surrounding lobby, lounges and other high activity areas. Spaces and activities spill into each other giving the building a sense of energy, excitement and movement. The two-story central entrance

lobby welcomes members, guests and visitors with views of the family pool, climbing wall, gymnasium, snack bar and prime-time area; while the west entry lobby provides access to the competitive pool area for participants and spectators without affecting security of the member's area.

Locker rooms located at the first floor provide direct access into the pool area, gymnasium and racquetball courts. Other first floor functions include an administration area, a multi-generational center used by teens and the elderly, a prime-time area providing both learning and play activities, and a nursery and an aerobics/dance studio.



The east wing contains the daycare facility; which maintains a separate outside entrance and its own outdoor play area. The second floor contains the fitness center, which overlooks the adjacent pool area, gymnasium and running track. A lounge area directly above the lobby area offers views of multiple activities from its central location. Several multi-purpose and testing rooms complete the second floor plan, with a central open stair and adjacent elevator connecting the two levels.

The predominant south facing glass is protected with louvered aluminum shading devices. Translucent fiberglass wall panels were combined with clear glazing units on the west and north exposures to allow natural light within, while minimizing the energy impact. Mechanical, electrical and lighting systems were carefully chosen to maximize energy efficiency and operational expenses while respecting the constraints of a tight initial budget.



Holabird &
Root LLC

CONTRACTOR:

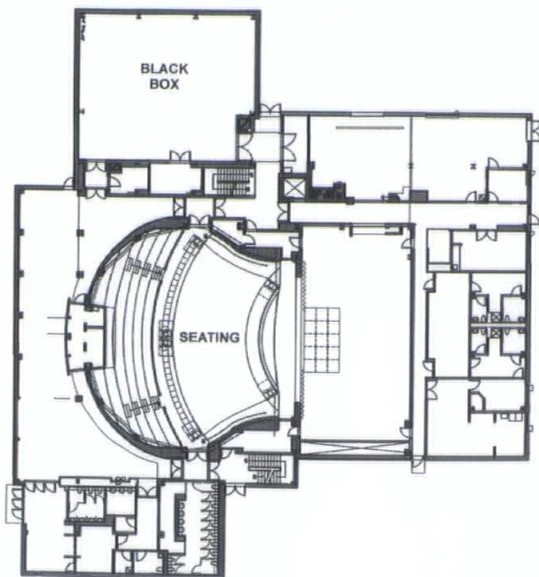
CD Barnes
AssociatesPhotography:
Hendrich-Blessing

The Center provides two performance venues, the main stage with full fly, orchestra pit, stage trap and orchestra shell and a flexible black box theatre with pipe grid. The facility includes a scene shop, prop shop, costume shop and catering set-up for events. The black box can be used for dinner theatre, cabaret, experimental theatre, parties and additional gallery/event space. The lobby also provides the community with an events space and art gallery.



The simplicity of the facility's massing and materials matches the honesty of structure of the local agricultural buildings. A glass lobby opens to the public and is a beacon of light to the adjacent state highway. A rusticated masonry base holds the support areas of the Performing Arts Center, while aluminum shingles clad the audience chamber and stage house. The metal skin gives the building life as its appearance changes with the positions of the sun.

Another goal of the project was to attract touring performances to the area. To insure quick set up, the loading dock offers direct loading in and out to the stage. Fiber optics provide video feed into a regional education cable network.



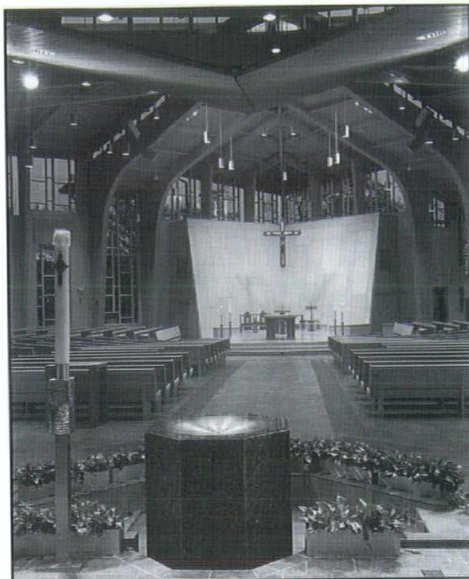
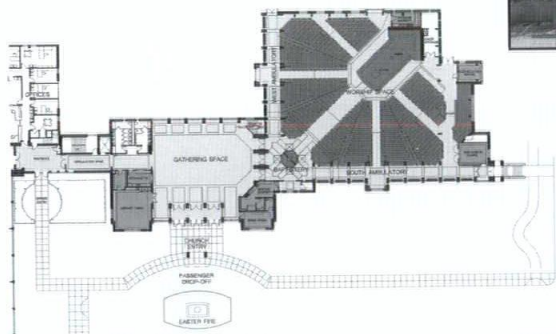
ARCHITECT:

Plunkett Raysich
Architects

CONTRACTOR:

The Bentley
Company

Photography: John J.
Korom Photography



The program for the church consists primarily of gathering space, baptistery and worship space. An entrance canopy draws people first to the generous 4,000 sq. ft. gathering space, flanked by a kitchen, bride room, library and other support facilities. The baptistery is next, placing a font at the entry to the worship space. Ambulatories extend to the north and the east, wrapping congregational seating. A sanctuary at the center of the worship space includes an altar, ambo and a presider's chair. Besides spaces related to worship, the church's program also includes a lower level fellowship hall, kitchen and support facilities. Programmed outdoor spaces include a courtyard, garden and dedicated place for the Easter fire.

The rich palette of stone, brick, copper and glass combine to create a church that conveys both permanence and lightness. Hospitality is an essential quality of the gathering space, where people share conversation before and after Sunday Mass. Bathed in natural light and offering expansive views to the cemetery, the design is composed of simple forms, materials and colors that invite people to come together and, ultimately, lead them to worship. The prominent entrance is richly textured in wood, brick and copper.

While offering calming views of the church's new courtyard and existing cemetery, the gathering space directs its primary focus to the solid piers and maple doors of the worship space entrance.

The naturally finished wood structure with exposed steel connections and soft overhead lighting combine to create an inviting spatial rhythm within the ambulatories.

Rendered in maple, cherry and rosewood, the altar is the focus of the worship space, evoking the "cross" shape of the structural wood arches that intersect in a crown of light overhead.



HGA

CONTRACTOR:

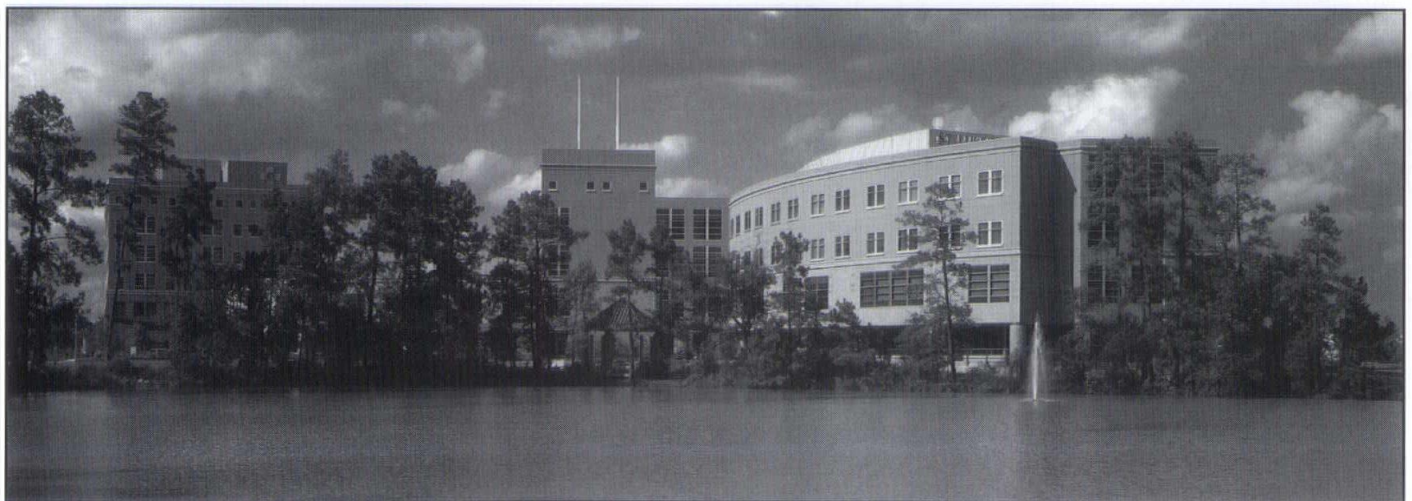
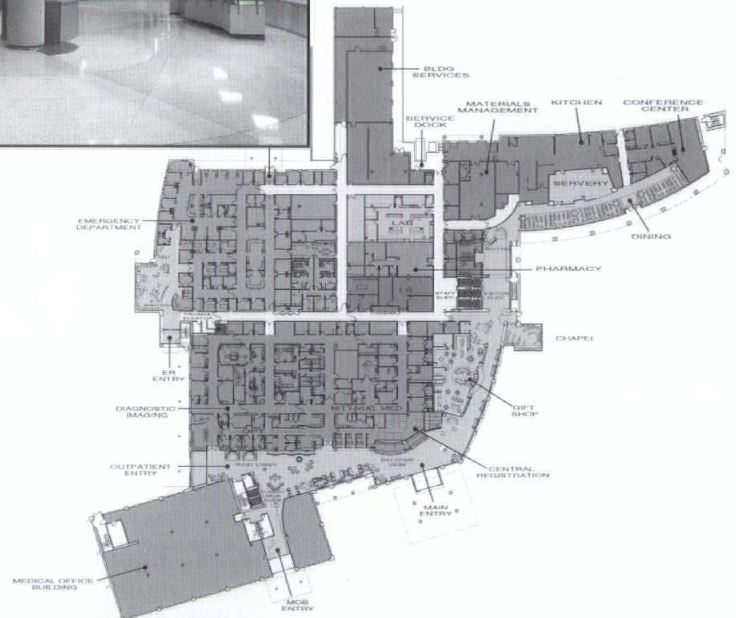
Linbeck
ConstructionPhotography:
Aker / Zvonkovic

As an extension of St. Luke's Episcopal Health System, this hospital anchors a 42 acre campus development which will grow to include medical office space and a world class wellness center. The hospital will grow to 240+ beds. The village-like campus focuses on the existing lake, with richly developed landscape and clear wayfinding. The complex is developed with an emphasis on clear, convenient entry and circulation and a strong sense of place, with options for seamless expansion.

The detail and character of the exterior and of all public spaces evoke a "hill country" style, combining natural color, materials, texture and light in a visitor friendly continuum.

The detailing includes extensive use of cast stone, large windows, stucco finishes, metal canopies with glass visors and trellises. Additionally, the arrival canopies, landscaped terraces, and public lobbies, waiting and concourses convey the "Planetree" philosophy of patient and visitor care.

The medical center is a comprehensive community facility providing patient services in acute/intensive care, birthing/nursery/pediatric care, imaging, surgery, women's imaging, oncology, testing, emergency services, dietary, health library, rehab medicine and support.

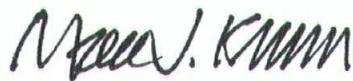


helps architects provide their clients with successful projects. This annual *Wisconsin Architect* Consultants, Contractors & Manufacturers Directory was developed to aid architecture firms, clients and the public.

To be listed, the consultant must offer services to design and construction professionals in Wisconsin. The companies listed will welcome the opportunity to discuss your projects with you.

The *Wisconsin Architect* Consultants, Contractors & Manufacturers Directory is organized by an index of categories referencing providers. Listings include the following information on each company: company name, web address, mailing address, telephone and fax numbers, email address, contact person and description of the company's service. The information was provided by the companies.

You are encouraged to keep the *Wisconsin Architect* Consultants, Contractors & Manufacturers Directory handy for reference throughout the year and refer to the online directory at www.aiaaw.org. Contact the consultants listed for further information about their practice and the professional services/products they can provide for your projects. If you have any suggestions for improving the Directory or wish to be included in future editions, please contact: AIA Wisconsin (608) 257-8477/1-800-ARCHITECT or email: wiaarchitect@aiaaw.org.



Mark J. Kruser, AIA, Chair
Editorial Advisory Board

Wisconsin Architect magazine is the official publication of AIA Wisconsin, a Society of The American Institute of Architects.

3D Visualization	
Danforth Illustrations.....	31
Eppstein Uhen Architects Inc.....	32
Fortel Studios.....	32
The Zimmerman Design Group.....	41

Accessibility/ADA Code

Braun Elevator Company.....	30
Hirsch Group LLC.....	33
IndependenceFirst.....	34
Martenson & Eisele, Inc.	36
Premium Planview.....	38
The Preview Group.....	39
Wikk Industries Inc.....	41
Wisconsin Automatic Door.....	41

Aquatics/ Pools

Nielsen Building Systems/ Kalwall/ Structures Unlimited.....	37
Water Technology Inc.	41

Architectural Coatings

PPG Industries - Pittsburgh Paints.....	38
---	----

Architectural Consulting

AG Architecture Inc.....	28
Angus-Young Associates.....	28
Architectural Alliance.....	28
Architectural Design Consultants, Inc.....	28
CANTILEVER.....	30
Daniel H. Curran, Architect.....	31
Dorschner/Associates, Inc.....	31
Eppstein Uhen Architects Inc.....	32
HSR Associates Inc.....	34
Kueny Architects, LLC.....	35
LHB, Inc.	36
Martenson & Eisele, Inc.	36
Mead and Hunt, Inc.....	37
Plunkett Raysich Architects, LLP.....	38
Portico Architects, LLC.....	38
Potter Lawson, Inc.	38
Premium Planview.....	38
Somerville, Inc.....	39
The Kubala Washatko Architects Inc.....	35
The Preview Group.....	39
The Zimmerman Design Group.....	41
Welman Architects, Inc.	41
Wolffgram & Associates, S.C.	41

Asbestos Abatement

Balestrieri Environmental & Development Inc.....	29
---	----

Audio/Visual

Alpha Video.....	28
AVI Midwest.....	29
Lang Associates, Inc.	36

Automatic Door Equipment

Automatic Entrances of Wisconsin, Inc.....	29
Wisconsin Automatic Door.....	41

Building Envelope Consulting

Facility Engineering, Inc.....	32
--------------------------------	----

Building Products Distributor

Cold Spring Granite Company.....	30
Hallmark Building Supplies, Inc.....	33

Ceramic Tile

Tom D. Lynch, CSI.....	40
------------------------	----

Civil Engineering

Cedar Corporation.....	30
Jenkins Survey & Design Inc.....	35
Larson Engineering of Wisconsin.....	36
Martenson & Eisele, Inc.	36
Vierbicher Associates Inc.....	40

Computer Imaging & Animation

Fortel Studios.....	32
The Zimmerman Design Group.....	41

Concrete Masonry & Concrete Products

County Materials Corp.....	31
Lafarge North America.....	35
Trenwyth Industries.....	40

Construction Management

Berghammer Construction Corporation.....	29
Beyer Construction.....	29
Camosy Incorporated.....	30
CG Schmidt, Inc.....	30
Friede & Associates, LLC.....	32
Inland Construction.....	34
J.P. Cullen & Sons, Inc.	34
M. A. Mortenson Company.....	36

Consulting Engineering Services

Graef, Anhalt, Schloemer & Associates, Inc.....	33
Jenkins Survey & Design Inc.....	35
Kapur & Associates, Inc.	35
LHB, Inc.	36
STS Consultants, Ltd.....	40

Contract Documents

AIA Wisconsin.....	28
--------------------	----

Contractor/Subcontractor

Berghammer Construction Corporation.....	29
Braun Elevator Company.....	30
Kraemer Brothers, LLC.....	35
Shaw-Lundquist Associates, Inc.	39

Cost Estimating/Project Management

J.P. Cullen & Sons, Inc.	34
SL Maher Architectural Group Inc.....	39

Design/Build

AVI Midwest.....	29
Berghammer Construction Corporation.....	29
Boldt Technical Services.....	29
Hoffman.....	33
MSI General Corporation.....	37
PLANNING Design Build, Inc.....	38
The Boson Company Inc.....	29
The Zimmerman Design Group.....	41
TMI Storage Systems.....	40

Electrical System Design

Lang Associates, Inc.	36
Spring Creek Engineering LLC.....	40
Strang, Inc.....	40

Elevator Consulting	
Braun Elevator Company.....	30
Performance Elevator Consulting, LLC	37

Environmental Services/Studies	
Balestrieri Environmental & Development Inc.....	29
Cedar Corporation.....	30
Energy Center of Wisconsin	31
Martenson & Eisele, Inc.	36

Executive Search	
Resource Staffing Consultants	39

Face Brick Distributor	
County Materials Corp.....	31
Janesville Brick & Tile.....	34

Fire Protection/Engineering/Design	
Ahern Fire Protection.....	28
Lang Associates, Inc.	36

Flooring	
Acryliccon / Polymerica	28
Dur-A-Flex, Inc.....	31
Manomin Resawn Timbers	36

Food Service/Kitchen	
Mackesey and Associates, LLC	36

Historic Restoration	
Beyer Construction	29
Eppstein Uhen Architects Inc.....	32
Facility Engineering, Inc.....	32
Inspec, Inc.	34
Isthmus Architecture, Inc.....	34
J.P. Cullen & Sons, Inc.	34
The Kubala Washatko Architects Inc.....	35

HVAC Design	
Affiliated Engineers Inc.....	28
Exhausto.....	32
Fredericksen Engineering, Inc.	32
Lang Associates, Inc.	36
Strang, Inc.	40

Insurance Services	
Holmes Murphy & Associates, Inc.	33

Interior Design	
Architectural Alliance	28
Artistic Finishes LLC.....	29
Eppstein Uhen Architects Inc.....	22
Plunkett Raysich Architects, LLP.....	38
Strang, Inc.....	40
The Kubala Washatko Architects Inc.....	35
The Zimmerman Design Group	41

Land Surveyors	
Jenkins Survey & Design Inc.....	35
Martenson & Eisele, Inc.	36
Vierbicher Associates Inc.....	40

Landscape Architecture	
Buettner and Associates, Inc.	30
L.J. Geer Design	35
Paragon Design Group LLC	37
The Zimmerman Design Group	41

Laundry Design	
Mackesey and Associates, LLC	36

Lead-based Paint Abatement	
Balestrieri Environmental & Development Inc.....	29

Lighting Design	
Creative Lighting Design & Engineering	31
Holophane	33
Lang Associates, Inc.	26
Schuler Shook	39

Lighting Supplier	
Engineered Representation, Inc.	31
Enterprise Lighting	31

Marketing/Advertising/Public Relations	
Fortel Studios	32
Kinziegreen Marketing Group	35
Pernsteiner Creative Group Inc.....	37
The Karma Group	35
Wisconsin Architect, Inc.	41

Masonry Consulting	
Inspec, Inc.	34
International Masonry Institute.....	34
Quikrete Wisconsin, Inc.....	39

Models/Rendering	
Fortel Studios.....	32

Mold Remediation	
Balestrieri Environmental & Development Inc.....	29

Openings	
Wikk Industries Inc.....	41

Paint	
PPG Industries - Pittsburgh Paints	38

Photography (Architectural)	
Eric Oxendorf Studio	32
Skot Weidemann Photography	39

Planning & Zoning	
Martenson & Eisele, Inc.	36

Plumbing Design	
Lang Associates, Inc.	36
Strang, Inc.	40

Precast Concrete	
County Materials Corp.....	31
Gate Precast Company	32
Lafarge North America	35
Spancrete Industries, Inc.....	40

Ready Mix Concrete	
Lafarge North America	35

Roofing & Sheet Metal	
Conservatek Architectural Systems	30
Johns Manville	35

Roofing Consultants	
Facility Engineering, Inc.....	32
Inspec, Inc.	34

Security Systems	
Lang Associates, Inc.	36

Signage	
Poblocki Sign Company LLC.....	38

Site Design	
L.J. Geer Design	35
Paragon Design Group LLC	37
The Zimmerman Design Group	41

Skylights	
Nielsen Building Systems/Kalwall/ Structures Unlimited.....	37

Sports Field Design Support	
Inspec, Inc.	34

Structural Engineering	
Gunnar Malm & Associates Inc.....	33
Larson Engineering of Wisconsin	36
Pierce Engineers Inc.	38

Sustainable Design Services	
Birschbach & Assoc, Ltd.	29
Eppstein Uhen Architects Inc.....	32
Graef, Anhalt, Schloemer & Associates, Inc.....	33
L.J. Geer Design	37
Paragon Design Group LLC	37
PLANNING Design Build, Inc.....	38
The Kubala Washatko Architects Inc.....	35
The Weidt Group.....	41
The Zimmerman Design Group	41

Technology Consultants	
Lang Associates, Inc.	36
MasterGraphics Inc.....	37
Taylor Technologies, Inc.....	40

Theater/Auditorium	
Schuler Shook	39

Thermal & Moisture Protection Consultants	
Facility Engineering, Inc.....	32

Timber Frame	
R.L. Merlie Construction Co.	39
Wood-Lam, Inc.	41

Value Management	
Boldt Technical Services.....	29

Wall Systems	
Nielsen Building Systems/Kalwall/ Structures Unlimited.....	37

Web Site Design	
MojoWeb Productions, Inc.	37

Window & Patio Doors	
Andersen Windows	28
Builders World, Inc.....	30
Marvin Windows and Doors	37

Log onto www.aiaw.org for a searchable database ... find it in the magazine section!

A

Acryliccon / Polymerica

Acryliccon.com

1770 S Randall Rd Ste A140
Geneva, IL 60134-4603
Phone: (630) 406-1144
Fax: (630) 406-9238
Contact: Chuck Toth; cr.toth@att.net

Are you tired of your floors only lasting for a few years? Well with Acryliccon Acrylic Resinous Flooring that cures in 1 hour and in temperatures down to -15 degrees. You now can have a floor that can last up to 20 years or more. With our superior bond strength and non staining characteristics, you will have a floor system that will out perform any other product on the market today.

Affiliated Engineers Inc.

www.aeieng.com

PO Box 44991
Madison, WI 53744-4991
Phone: (608) 238-2616
Fax: (608) 238-2614
Contact: Julie Bauer; jbauer@aeieng.com

Design of mechanical, electrical, piping/plumbing and information technology systems. Specialties include commissioning, sustainable design, utility master planning, instrumentation & controls, cost estimating and architectural lighting. Markets served include higher education, health care, research, medical science, industrial, pharmaceutical, commercial.

AG Architecture Inc.

agarch.com

1414 Underwood Ave Ste 301
Wauwatosa, WI 53213
Phone: (414) 431-3131
Fax: (414) 431-0531
Contact: Cindy Lofy; calofy@agarch.com

AG Architecture continues a 30 year tradition of excellence in the design of multi-family, senior living environments and numerous independent living retirement centers. AG Architecture is involved with the programming, master planning and full service design on a daily basis. Due to the firm's experience, sensitivity to design and attention to individual client preferences, clients have continuously retained the firm for project after project. The firm maintains a full service office in Milwaukee. A full service mechanical engineering staff is maintained to simplify decision making, document preparation and coordination during construction.

Ahern Fire Protection

www.ahernfire.com

4247 Argosy Ct
Madison, WI 53714-3101
Phone: (608) 216-0283
Fax: (608) 216-0284
Contact: Ken Collins

AIA Wisconsin

www.aiaaw.org

321 S Hamilton St
Madison, WI 53703-4000
Phone: (608) 257-8477
Fax: (608) 257-0242
Contact: Mary Orella; info@aiaaw.org

AIA Wisconsin is the state's only authorized full-service distributor of AIA Contract Documents. AIA Wisconsin members benefit from 25 % discount on paper documents. Look for a list of AIA Documents and synopses on the AIA Wisconsin Web site, www.aiaaw.org. New and entirely redesigned AIA Contract Documents software based on the widely-accepted Microsoft Word platform is available for demo and download at www.aiaaw.org.

Alpha Video

www.alphavideo.com

7711 Computer Ave
Minneapolis, MN 55435
Phone: (952) 896-9898
Contact: Jeff Volk; jeffv@alphavideo.com

Alpha has been a leading digital video systems dealer, integrator and provider of visual communications services for over 30 years. Representing over 100 leading manufacturers, we are the visual communications experts, specializing in products, systems and services for video and digital media content creation, distribution and management.

Andersen Windows

www.andersenwindows.com

212 Webster St
Beaver Dam, WI 53916-0000
Phone: (920) 356-1448
Fax: (920) 356-1452
Contact: Brian Krenz

Angus-Young Associates

www.angusyoung.com

555 S River St
Janesville, WI 53548-4783
Phone: (608) 756-2326
Fax: (608) 756-0464
Contact: Jeffrey Hazekamp, AIA;
jeffh@angusyoung.com

Over 45 years providing high quality design, we offer integrated architectural, interiors and engineering disciplines. Our project's success comes from a philosophy of listening, understanding and responding to our client's goals. Our team approach focusing on design quality and service makes working with Angus-Young an enjoyable and enriching experience. While offering traditional design through construction services, we also provide a variety of special services. These include programming, feasibility, and master-planning studies; site evaluations and planning; mechanical, electrical, plumbing and structural engineering consulting. We provide services to a wide variety of clients including municipalities, libraries, medical, office, retail, manufacturing and industrial.

Architectural Alliance

www.archalliance.com

400 Clifton Ave South
Minneapolis, MN 55403-3299
Phone: (612) 871-5703
Fax: (612) 871-7212
Contact: Eric Peterson;
epeterson@archalliance.com

Architectural Alliance is a 75 person architectural and interior design firm with experience in four primary areas: aviation, retail, corporate and public. The firm was founded in 1970 and provides planning and design services internationally.

Architectural Design Consultants, Inc.

www.adci.ws

30 Wisconsin Dells Pkwy
PO Box 580
Lake Delton, WI 53940-0000
Phone: (608) 254-6181
Fax: (608) 254-2139
Contact: Robert W. Nagel, PE

161 Horizon Dr Ste 102
Verona, WI 53593
Phone: (608)848-2324
Fax: (608)848-5122
Dwayne Kieler, C.F.O.

Architectural Design Consultants, Inc. (ADCI), consists of a team of qualified professionals providing architectural and engineering services. Our areas of specialization include hotel/resort design with elaborate indoor aquatic facilities. ADCI is committed to personalized one-on-one relationships with our clients. We have achieved an outstanding reputation for producing high quality projects that meet or exceed owner expectations.

Artistic Finishes LLC

www.artisticfinishes.biz

2803 East Belleview

Milwaukee, WI 53211

Phone: (414) 915-3377

Contact: Laura-Ashleigh;

artisticfinishes@lauraashleigh.com

Artistic Finishes, LLC, is a full-service, professional decorative paint contractor, specializing in artistic paint and plaster solutions for residential and commercial interiors. We offer full support to architects, builders, interior designers and commercial/residential clients from project concept to completion. An experienced team with a strong reputation for craftsmanship and cost effective client solutions. Our capabilities offer a full portfolio of custom decorative paint & faux-finishing techniques, Italian plasters, tromp l'oeil, murals and professional color and finish consultation. Licensed, insured, accredited, listed in International Directory of Decorative Painters, member of MARN, WAAC, WDCC, WPCA.

Automatic Entrances of Wisconsin, Inc.

www.aewinc.net

1712 Paramount Ct

Waukesha, WI 53186-3967

Phone: (262) 549-8600

Fax: (262) 549-8604

Contact: Tim Doughman

Recommendation, design, specification, installation and service of automatic door equipment. Systems include power assist and full-speed swing operators, automatic slide doors, automatic and manual revolving doors, manual ICU slide packages. Complete product offerings health care, retail, ADA and commercial projects. Statewide support and service.

AVI Midwest

www.avi-midwest.com

5300 S Emmer Dr

Milwaukee, WI 53151

Phone: (262) 207-1300

Fax: (262) 207-1301

Contact: Barb Aschom;

barb.aschom@avi-midwest.com

2137 S Stoughton Rd

Madison, WI 53716

Phone: (608) 221-8888

Contact: Jane Phillips;

jane.phillips@avi-midwest.com

AVI Midwest (formerly MCSi) is a leading systems integrator and provider of presentation systems for corporate boardrooms, training centers, University lecture halls, distance learning rooms and video conferencing rooms. We provide video broadcast systems, data conferencing solutions and video streaming technologies. AVI Midwest and our employees have over 25 years of experience with full-time design engineers, CAD technicians, installation technicians, project managers and service personnel. We can take a project from its initial planning phase

to design-build, to final training. AVI Midwest is an AIA/CES registered provider of two A/V Design seminars that are available to architects/planners for AIA learning units.

B

Balestrieri Environmental & Development Inc.

www.balestrierigroup.com

PO Box 860

Elkhorn, WI 53121-0860

Phone: (262) 742-3163

Fax: (262) 742-3754

Contact: Kenneth R. Balestrieri;

kbal@balestrierigroup.com

We are an environmental contracting firm whose mission is to assist our clients in reducing their exposure to environmental liability and hazards. We look forward to achieving success for all parties involved.

Berghammer Construction Corporation

www.berghammer.com

4750 N 132nd St

Butler, WI 53007-0918

Phone: (262) 790-4750

Fax: (262) 790-4755

Contact: Jim Parks; jim@berghammer.com

Established in 1929, Berghammer is one of Southeastern Wisconsin's premier contractors offering General Contracting, Construction Management, and Design/Build Construction Services. Berghammer provides our clients a professional project management team with extensive expertise and employs a dedicated and highly skilled field staff. A diverse construction company, Berghammer has experience in the following facility types: Commercial Office and Tenant Improvement, Industrial/Distribution, Health care and Elder care, Educational, Institutional and Community, and Multi-Family.

Beyer Construction

www.beyer.com

3200 S 166th St

New Berlin, WI 53151-4141

Phone: (262) 789-6040

Fax: (262) 789-6055

Contact: George M. Beyer;

george.beyer@beyer.com

Construction Management — A full-service construction firm incorporated in 1951 and located in New Berlin, Wisconsin, our firm specializes in providing construction services and managing high image and technically difficult projects. We have extensive experience in delivering challenging projects to corporate, health care, elder care, industrial, religious and educational clients. In all aspects of our work, we stress a team approach that builds on the knowledge, abilities and strengths of the client, design professionals and construction specialists involved in each project. The advantages of this approach stem

from trust and cooperation between architect, constructor and owner.

Historic Renovations — Experts in historical renovations. For decades, Beyer Construction has been rebuilding historical structures, giving architecturally unique buildings new lives and extending their years of usefulness. A careful and respectful approach is the secret to our success. It starts with the cost analysis and planning stages, and continues through the construction schedule. Ask our clients about our performance. Charles Allis Art Museum, The Lynde & Harry Bradley Foundation, Northern Trust Bank, UWM Foundation, Inc., and Wisconsin Conservatory of Music. Our affiliations: Historic Milwaukee, Historic Third Ward of Milwaukee, Milwaukee County Historical Society, State Historical Society of Wisconsin and Wisconsin Trust for Historic Preservation.

Birschbach & Assoc, Ltd.

www.birschbach.com

PO Box #1216

Appleton, WI 54912-1216

Phone: (920) 730-9200

Fax: (920) 730-9230

Contact: Allan Birschbach;

arb@birschbach.com

2005 is our 25th anniversary year. We are a full service architectural firm with a specialty in religious projects. We have completed over 18 church projects in that last 10 years.

Boldt Technical Services

www.theboldtcompany.com

2525 Roemer Rd

PO Box 419

Appleton, WI 54912-0419

Phone: (920) 225-6153

Fax: (920) 739-0037

Contact: John Koga, CVS AIA LEED AP

Design and Engineering; Value Engineering Consulting for campus, building, process and product development; Decision Facilitation; LEED Assistance; Estimating

The Boson Company Inc.

www.bosonco.com

PO Box 544

2613 W. Veterans Parkway

Marshfield, WI 54449-0544

Phone: (715) 384-3184

Fax: (715) 384-5872

Contact: Kurt Boson; kurt@bosonco.com

The Boson Company is a full service general contractor performing commercial, corporate, worship, industrial, and institutional construction throughout central and northern Wisconsin. We offer negotiated general construction, design-build, hard bid, and construction management services to our clients. The Boson Company has been providing high quality construction services since 1932.

Braun Elevator Company

www.braun-corp.com/elevator/elevator_company.htm

2829 Royal Ave
Madison, WI 53713
Phone: (608) 221-4400
Fax: (608) 221-4475
Contact: Ken Smith

At Braun Elevator, we excel in vertical settings—getting people and freight where they belong—quickly, safely, and efficiently. Our Braun Elevator Division provides: design and installation of new elevators, modernization of existing elevators and service of any make/model of elevator or lift. We work with the leading manufacturers of passenger and freight elevators as well as accessibility systems for the physically challenged. Together, we can meet virtually any need for upward mobility.

Buettner and Associates, Inc.

www.buettner.biz

6928 N Santa Monica Blvd
Phone: (414) 351-7080
Fax: (414) 351-7085
Contact: Dennis Buettner; info@buettner.biz

Buettner & Associates is an award-winning landscape architecture, urban design and planning firm. For more than twenty years, we have been designing landscapes for parks, botanic gardens, residences and commercial venues. Our talented team of landscape architects is skilled in all phases of project development from master planning through construction management and maintenance inspections. We provide innovative designs reflecting a wide variety of architectural styles from historic to contemporary.

Builders World, Inc.

www.marvin@bwinet.com

PO Box 4039
Waukesha, WI 53187
Phone: (262) 542-8883
Fax: (262) 542-1832
Contact: Les Mathson; zygo07@sbcglobal.net

Builders World, Inc. is a wholesale distributor for Marvin and Integrity by Marvin windows and doors. Marvin offers designers limitless combinations of sizes, shapes, colors, and wood species. The Integrity line offers superior performance in a great looking clad-wood product that is designed to meet a budget. Builders World provides complete architectural services to design and specification professionals. Call on us to assist with product performance, design loads, assembly and installation recommendations, and value engineering to make your next project a success.

C

Camosy Incorporated

www.camosy.com

PO Box 427
Kenosha, WI 53141-0427
Phone: (262) 552-9440
Fax: (262) 552-0480
Contact: Raymond J. Camosy;
raymondcamosy@camosy.com

Camosy Incorporated is a full-service general contractor located in Southeastern Wisconsin and Northeastern Illinois specializing in construction management, design/build service and cost consulting. Established in 1910, the corporation builds all types of structures including commercial, industrial and institutional buildings. The firm also employs its own workforce to perform concrete, masonry and carpentry. A representative list of projects is available on our website, at www.camosy.com.

CANTILEVER

www.cantilever.us

215 Pleasant Pl
Depere, WI 54115
Phone: (920) 360-5040
Fax: (920) 339-9061
Contact: Chad Cornette; cantilever@usa.com

This firm provides creative alternatives to unimaginative building design. Our approach produces unique qualities that specifically address client needs and budget. We focus on build-able solutions with thoughtful details to create the space within to be lived in. Form and function become one.

Cedar Corporation

www.cedarcorp.com

604 Wilson Ave
Menomonie, WI 54751-2617
Phone: (715) 235-9081
Fax: (715) 235-2727
Contact: Gary Gust; gary.gust@cedarcorp.com

Cedar Corporation is a professional consulting firm providing civil and municipal engineering, land surveying, landscape architecture, and environmental services. Special areas of expertise include street design, water and sewer system design, storm water management, environmental assessments, hazardous materials management, environmental contamination investigations and restoration, wetland delineations, private land development, grading plans, bridges, multi-modal trails, and grant and funding programs.

CG Schmidt, Inc.

www.cgschmidt.com

11777 W Lake Park Dr
Milwaukee, WI 53224-3021
Phone: (414) 577-1177
Fax: (414) 577-1156
Contact: Dave Giordano

Founded in 1920, CG Schmidt, Inc., provides complete general contracting, construction management and design/build services for health care, senior living, educational, cultural, corporate, industrial, religious and parking structures.

Cold Spring Granite Company

www.coldspringgranite.com

202 S 3rd Ave
Cold Spring, MN 56320
Phone: (320) 685-3621
Fax: (320) 685-8490
Contact: tolsong@coldspringgranite.com

Cold Spring Granite Company is a fully integrated quarrier and manufacturer of granite building stone and memorialization products. Cold Spring Granite has 24 individual manufacturing facilities in five areas of North America and offer over 100 different colors of stone and provide raw material and finished products to over 20 countries.

Conservatek Architectural Systems

www.conservatek.com

498 North Loop 336 East
Conroe, TX 77301-1422
Phone: (936) 539-1747
Fax: (936) 539-5355
Contact: Robert J. Kartes, CSI, CDT

Conservatek engineers, designs, fabricates and installs clear-span structural aluminum framing systems to which we attach glass, aluminum panels, translucent/polycarbonate systems and standard roofing products. The strength of Conservatek is the maximum span capabilities of our three systems, ALUMADOME™, SPEC-TRAFORM™ and STADIAFORM™. All have unique design characteristics and maximize interior and exterior usage of space by eliminating secondary structural support systems. Conservatek's systems not only provide the structural framework, but also function as the seat for the glazing or skin that encloses the space. We offer complete installed systems that allow architects unmatched design flexibility while utilizing a low-density aluminum grid framework.

County Materials Corp.

www.countymaterials.com

Corporate Headquarters
205 North St
Marathon, WI 54448-9647
Phone: (800) 289-2569
Fax: (715) 443-3691

Milwaukee Division
W229N2450 Homewood Ct
Waukesha WI 53186
Ph: (888) 220-4120
Fax: (262) 896-1755

County Materials Corporation has been a trusted leader in the production of concrete products and the supply of related construction materials for over 55 years, with 23 locations statewide. Using state-of-the-art facilities, County Materials manufactures and sells an expansive product line that includes decorative concrete masonry, burnished and glazed masonry, brick and stone veneers, landscaping products, ready mix concrete,* Hollowcore roof and floor systems,* and a variety of specialty and precast concrete products. Visit our Web site for the latest news and product updates at countymaterials.com.

*Available at select locations.

Creative Lighting Design & Engineering

www.cld-e.com

N140W13843 Cedar Ln
Germantown, WI 53022-0000
Phone: (262) 242-4432
Fax: (262) 242-1020
Contact: Marty Peck

Creative ideas + engineering expertise = award-winning designs. Since 1991 we've been creating expressive architectural lighting solutions for retail, hospitality, museum, commercial and residential projects. As an independent design and consultation firm, we use light as a design element in order to sculpt architecture, focus attention, drive emotions and create excitement. Seeing is believing with our Lightscape rendering capabilities, which models lighting concepts with photo-accurate realism. Our staff, headed by Marty Peck, has backgrounds in architecture, engineering and theater to provide the highest qualifications and experience in Wisconsin; and our services include full concept development, high-quality CAD drawings, computer renderings and engineering services.

Daniel H. Curran, Architect

721 Old Military Rd
Bayfield, WI 54814-4787
Phone: (715) 779-5747
Contact: Daniel Curran

Architecture and building science services.

D

Danforth Illustrations

814 Jennifer St #2
Madison, WI 53703
Phone: (608) 257-6289
Contact: David Danforth

Providing traditional 3-D illustrations in color or B+W. Presentations are rendered in mixed media including pen, pencil, marker and water color. Illustrations can be provided from floor plans and elevations as well as photos of existing structures in for example, rehab construction projects. Illustrations can be provided on CD.

Dorschner/Associates, Inc.

849 E Washington Ave Ste 112
Madison, WI 53703
Phone: (608) 204-0777
Fax: (608) 204-0778
Contact: ddorschner@dorschnerassociates.com

The Dorschner|Associates, Inc. mission is to provide creative design solutions in support of the goals of our clients. This statement carries with it an uncompromising commitment to the highest level of service, design excellence, explanation of options and appreciation of our client's environment, goals and ideas. Our services include architecture and planning. We bring expertise in corporate work, civic and governmental facilities, retail, and research and development.

Dur-A-Flex, Inc.

www.dur-a-flex.com

95 Goodwin Street
East Hartford, CT 06108
Phone: (800) 253-3539
Fax: (860) 528-2802
Contact: Jennifer Crosse;
jcrosse@dur-a-flex.com

Whatever your flooring needs may be, Dur-A-Flex has the right solutions. A manufacturer of quality epoxy, urethane, methyl methacrylate (MMA) and specialty colored aggregates, we offer a complete line of quality flooring systems. Our versatile seamless flooring applications provide improved safety, minimum downtime, easy maintenance and long-lasting performance. Dur-A-Flex is known for consistent and dependable products combined with just-in-time ordering. We provide technical assistance, product samples and literature, as well as regional sales and marketing support. With over 35 years of experience, innovation and a nationwide network of quality flooring contractors, Dur-A-Flex, Inc., is the smart choice.

E

Energy Center of Wisconsin

www.ecw.org

455 Science Dr Ste 200
Madison, WI 53711
Phone: (608) 238-8276
Fax: (608) 238-8733
Contact: Abby Vogen; avogen@ecw.org

The Energy Center of Wisconsin is a private, non-profit organization that sponsors and conducts research in the efficient use and management of energy. As a part of its mission, the Energy Center is a registered provider of AIA/CES learning units for design and construction professionals. The Energy Center promotes the use of daylighting in educational and commercial facilities through its Daylighting Collaborative. In addition, the Energy Center is the Wisconsin manager of the Advanced Buildings Program which provides training and technical assistance to architects, engineers, developers and building owners with resources needed to make informed decisions about performance and energy efficiency of new buildings. For more information, call 1-800-864-6254 or visit www.ecw.org, www.daylighting.org or www.poweryourdesign.com.

Engineered Representation, Inc.

www.engineeredrepinc.com

1320 N Lake Street
Neenah, WI 54956
Phone: (800) 555-5586
Fax: (920) 751-8816
Contact: hk@engineeredrepinc.com

Independent manufactures' representatives for lighting controls, automated window shades, wire management, lighting and ventilation products.

Enterprise Lighting

www.enterpriselighting.com

5404 Anthony St
McFarland, WI 02842
Phone: (608) 838-7555
Fax: (608) 838-4431
Contact: Sandra Williams;
swilliams@enterpriselighting.com

2007 Pewaukee Rd
Waukesha, WI 53188
262-953-2700
Contact: Kristen Briggs

Manufacturers representatives for commercial, industrial, architectural lighting, landscape products, site furnishings, lighting controls and energy management.

Eppstein Uhen Architects Inc.

www.eppsteinuhen.com

333 E Chicago St
Milwaukee, WI 53202-0000
Phone: (414) 271-5350
Fax: (414) 271-7794
Contact: Richard J. Tennessen

A market leader with over 97 years of experience, Eppstein Uhen Architects is best known for packaging inspired design and meticulous attention to detail with exceptional service. Almost 130 employees are challenged to go Beyond Design by demonstrating unparalleled commitment to the markets they serve, the community, and their clients. The firm performs work throughout the country and specializes in several distinct markets: corporate, industrial, public, education, residential, retail, hospitality, senior living, and health care.

Eric Oxendorf Studio

www.ericoxendorf.com

1442 N Franklin Pl
Milwaukee, WI 53202-0000
Phone: (414) 273-0654
Fax: (414) 273-1759
Contact: Eric Oxendorf

Exhausto

http://us.exhausto.com

1200 Northmeadow Pkwy Ste 180
Roswell, GA 30076
Phone: (800) 255-2923
Fax: (770) 587-4731
Contact: John Altieri; johna@exhausto.com

The Exhausto Chimney Fan is the only guaranteed solution to smoking fireplaces, stoves, BBQ's and more. Mounted on top of the chimney, it ensures a perfect draft, and its compact and low profile makes it almost invisible from the ground. The fan is made of cast aluminum, equipped with an extremely quiet, no-maintenance motor, controlled by a dial-switch. It can be used with wood or gas fuel, and is suitable for masonry or metal chimneys. Call us today at (800) 255 2923 today for a free dealer package – and we invite you to visit us at us.exhausto.com/res for additional information.

F

Facility Engineering, Inc.

www.facilityengineeringinc.com

101 Dempsey Rd
Madison, WI 53704
Phone: (608) 240-9110
Fax: (608) 240-9112
Contact: Kelly Thompson;
kelly@facilityengineeringinc.com

Facility Engineering, Inc., provides professional licensed and insured analysis and design services to individuals and organizations seeking solutions to their building envelope alteration and improvement needs. We were formed with years of laboratory and field analytical expertise and a regimen of diverse design applications. Our

specialty is consulting with building owners and managers as well as other design professionals about thermal and moisture protection considerations for their existing or new construction. Roofing and wall system technology is what we choose to emphasize.

Fortel Studios

www.fortelstudios.com

4921 Triangle St
McFarland, WI 53558-9358
Phone: (608) 838-0099
Fax: (608) 838-6576
Contact: Scott Erstad; fortel@fortelstudios.com

Fortel Studios is the ultimate solution. The visualization and marketing tools we develop provide our clientele a clear-cut advantage over their competitors. We participate in efforts relating to design visualization and real estate marketing, PR and fundraising, and have provided architects and designers the edge needed to win competitive bid contracts. Services include design visualization and video animation / editing; graphic arts such as website and print design; brand development and corporate identity, and photography and photo retouch. Vision accomplished!

Fredericksen Engineering, Inc.

12308 Corporate Pkwy Ste 400
Mequon, WI 53092-3381
Phone: (262) 243-9090
Fax: (262) 243-9233
Contact: John Fredericksen

Fredericksen Engineering, Inc., established in 1953, provides complete HVAC design services throughout the Midwest. Areas of concentration include educational facilities, county administration buildings, county jail buildings, industrial buildings, nursing homes and industrial process design. Fredericksen Engineering is dedicated to providing quality engineering services. Our mission is to provide the highest level of service to each project and each client.

Friede & Associates, LLC

www.friede.com
Contact: Scott Truehl

364 South Ave
Reedsburg, WI 53959-0248
Phone: (608) 524-4383
Fax: (608) 524-8393

1402 Pankratz St
Madison, WI 53704
Phone: (608) 244-1900
Fax: (608) 244-8008

Friede & Associates is a full service general contracting firm with offices in Reedsburg and Madison. Since 1945, we have been dedicated to providing outstanding service to our clients and professional growth and fulfillment for our employees. Our design-build construction approach has served clients in the commercial, manufacturing, industrial, banking and institutional markets extensively. By partnering with independent architects, we are able to create project teams

with experience and creativity. We listen to our clients, share their values and respond to their needs. In short, we take great pride in helping our clients see their dream become a reality.

G

Gate Precast Company

www.gateprecast.com

4358 S Deerwood Dr
New Berlin, WI 53151-9201
Phone: (262) 797-0978
Fax: (262) 641-9311
Contact: Dick Winkowski;
rwinkowski@gateprecast.com

Gate is the largest PCI-certified producer of architectural precast concrete in the United States. Gate has multiple plants covering the entire Eastern United States and maintains the highest standard of quality, service, production and design. Gate has a reputation for superior high quality work and is renowned for its performance on large, difficult and fast-track projects. Gate is a subsidiary of Gate Petroleum Company, Jacksonville, Florida. Call Gate for a AIA accredited box lunch program on its Architectural Precast High Performance School Wall System.



ADVERTISE TO ARCHITECTS

Published quarterly, *Wisconsin Architect* reaches architects, as well as other design and construction professionals in Wisconsin.

Vendors can participate in the *Wisconsin Architect* advertising program by placing ads, inserting info sheets, including newsletters or sponsoring advertorials.

For more information, contact *Wisconsin Architect* at (608) 257-8497 ext. 102 or wiaarchitect@aiaa.org

Graef, Anhalt, Schloemer & Associates, Inc.

www.gasai.com

125 S 84th St Ste 401
Milwaukee, WI 53214-1470
Phone: (414) 259-1500
Fax: (414) 259-0037
Contact: John Kissinger;
john.kissinger@gasai.com

5126 W Terrace Dr Ste 111
Madison, WI 53718-8343
Phone: (608) 242-1550
Contact: Kevin Hagen; kevin.hagen@gasai.com

1150 Springhurst Dr Ste 201
Green Bay, WI 54304-5950
Phone: (920) 592-9440
Contact: Michael Lefebvre;
michael.lefebvre@gasai.com

332 S Michigan Ave Ste 1400
Chicago, IL 60604-4367
Phone: (312) 582-2000
Contact: John Dasoqi; john.dasoqi@gasai.com

8501 W Higgins Rd Ste 280
Chicago, IL 60631-2801
Phone: (773) 399-0112
Contact: Ronald Jankauskas;
ronald.jankauskas@gasai.com

1225 E River Dr Ste 310
Davenport, IA 52803-5752
Phone: (563) 445-1888
Contact: Dudley Hanson;
dudley.hanson@gasai.com

5150 N. Tamiami Trl, Ste 206
Naples, FL 34103-2818
Phone: (239) 430-2830
Contact: Chad Luttrell; chad.luttrell@gasai.com

Graef, Anhalt, Schloemer & Associates, Inc. (GAS) is a consulting firm of engineers, scientists and other professionals dedicated to providing quality services in structural, site/civil, transportation and MEP engineering, environmental science, field services, sustainable site design and landscape design services. We pride ourselves in getting to know our clients and understanding their unique concerns. Whether your specialty is health care, hotels, industrial, educational, retail, entertainment, public works or many other types of developments, we can help. Call us and see how our depth of experience and expertise can provide efficient and flexible solutions for your project.

Gunnar Malm & Associates Inc.

www.gmaengineers.com

6402 Odana Rd
Madison, WI 53719-1123
Phone: (608) 288-1108
Fax: (608) 288-1109
Contact:
Gunnar Malm; gmalm@gmaengineers.com

Gunnar Malm & Associates, Inc. (GMA Engineers), is a professional engineering firm specializing in structural engineering services for architects and building owners. Our services include the structural design of steel, concrete, timber and wood framed structures with emphasis on the detailing of exposed structures. Additionally, GMA provides technical services for the renovation of concrete and masonry buildings. GMA has extensive experience in the design of new parking structures and the renovation and condition studies of existing parking structures. GMA Engineers also provides building envelope condition surveys including cladding, roof systems and design services for remediation needs.

H

Hallmark Building Supplies, Inc.

www.hllmark.com

6060 N 77th St
Milwaukee, WI 53218-0000
Phone: (800) 274-7842
Fax: (800) 688-7842
Contact: Jennifer Young;
response@hllmark.com

Founded in 1974, Hallmark is a marketer and wholesale distributor of category-leading consumer branded, building materials to residential and commercial markets. Our product lines are DuPont Corian® solid surfaces, DuPont Zodiac® quartz surfaces and DuPont Tyvek® weatherization systems.

Hirsch Group LLC

14 N Allen St
Madison, WI 53726-3924
Phone: (608) 233-7797
Fax: (608) 231-3533
Contact: thirsch@chorus.net

Hirsch Group, LLC provides residential design services, both new construction, additions, and rehabilitation, as well as analytical services including accessibility evaluations, capital needs assessments, cost segregation studies. Expert in Universal Design, design ing environments for all stages of life.

Hoffman

www.hoffman.net

PO Box 8034
Appleton, WI 54912-8034
Phone: (920) 731-2322
Fax: (920) 731-4236

Hoffman provides planning, design and construction management services using an innovative project delivery method called Total Project Management (TPM). Our in-house team of design and construction professionals works with you from vision to completion and beyond. Hoffman's range of services makes us unique, and TPM is a process that guarantees success. TPM provides a single source of responsibility, a single contract and one direct line of communication. Hoffman excels in the construction industry because of TPM and our dedication to our mission—we make a positive impact on people's lives and their environment by providing creative ideas and responsible solutions.

Holmes Murphy & Associates, Inc.

www.holmesmurphy.com

10 E Doty St Ste 800
Madison, WI 53703
Phone: (800) 527-9049
Fax: (800) 233-4951
Contact: Wendy Bettermann;
wbettermann@holmesmurphy.com

Architects and Engineers have a crucial role in the world of tomorrow. Holmes Murphy is the preferred partner of hundreds of companies for managing risk, controlling losses, contract reviews and protecting assets. Holmes Murphy operates a division of industry experts who are dedicated to shaping the future, offering designers and builders expert dispute and claims handling services. Our effective response saves you time, money and stress while you keep projects on track.

Holophane

www.holophane.com

PO Box 618
Sun Prairie, WI 53590
Phone: (608) 834-8003
Fax: (608) 834-3490
Contact: Fred Stohl; fred.stohl@holophane.com

Holophane has been the leader in lighting solutions for more than a century. The hallmark of Holophane luminaires is the borosilicate glass reflector/refractor. The glass prisms provide a combination of uplight and downlight to illuminate any environment evenly without creating dark spots or glare. Holophane luminaires are made for longevity and performance. In most applications, fewer luminaires can be used to do the job than if competitive fixtures are specified. Holophane factory sales representatives offer photometric analysis and design for your project using state of the art CAD programs. Holophane has the resources, expertise and flexibility to meet all of your indoor and outdoor lighting needs.

HSR Associates Inc

www.hsrassociates.com

100 Milwaukee St
La Crosse, WI 54603-3116
Phone: (608) 784-1830
Fax: (608) 782-5844
Contact: Jack Fleig; jfleig@hsrassociates.com

HSR Associates offers services in architecture, mechanical and electrical engineering. Founded in 1953, the firm matches client expectations by sharing close workability, open communications and creative responsiveness. HSR has received many design awards for building types from a variety of sources which confirms a unified design approach blending function, aesthetics and economics. Expertise through experience includes schools and collegiate facilities, city and county projects including libraries, hospitals, medical clinics and nursing homes, public and private multi-family and elderly housing, corporate/industrial facilities, office buildings and banks, plus historical restoration and planning/feasibility studies.

IndependenceFirst

www.independencefirst.org/services/business/accessibility_consult.asp

600 W Virginia St 4th Fl
Milwaukee, WI 53204
Phone: (414) 291-7520
Fax: (414) 291-7525
Contact: Diana Sullivan;

dsullivan@independencefirst.org

From small to large businesses, IndependenceFirst has assisted companies to evaluate their existing facilities, review blueprints and new construction plans, and perform accessibility surveys while ensuring functional accessibility for all users of facilities. Customized site surveys, blueprint review and consultation meet business needs. IndependenceFirst is your resource on access and independent living for persons with disabilities and a nonprofit organization with a vision for full inclusion of persons with disabilities in every aspect of our community.

Inland Construction

www.inlandcompanies.com

839 North Jefferson St Ste 400
Milwaukee, WI 53202
Phone: (414) 276-9500
Fax: (414) 276-9502
Contact: Bruce Stern;

bstern@inlandcompanies.com

At Inland Construction, understanding the client's need is essential for any successful project. Our expert staff has the industry knowledge and technical expertise to meet the challenges of even the most demanding projects. From simple renovations to design / build projects, Inland Construction will tailor a team to fit the needs of each client regardless of the project size and scope. Our services include: general contracting, construction management, site development and

pre-construction services, owner's representation, design-build, project management, tenant improvements, facility build-out, demolition, project estimating, value engineering and consulting services.

Inspec, Inc.

www.inspec.com

555 W Layton Ave Ste 420
Milwaukee, WI 53207
Phone: (414) 744-6962
Fax: (414) 744-6981
Contact: Dave Velcheck, CCS, CSI;
dvelcheck@inspec.com

Inspec, Inc. is an independent consulting engineering/architectural firm. The company was founded in 1973 based upon a need for improved design, construction practices, and maintenance of roofing systems. Over the past 30 years, services have been added for pavements and building exteriors. The firm also specializes in waterproofing design, historic building restoration, and outdoor sports facilities. Services provided within each division include: survey and evaluation; infrared surveys; failure investigations; design; construction observation and administration; onsite/laboratory testing. From offices in Chicago, Illinois, Milwaukee, Wisconsin, and Minneapolis, Minnesota, the firm provides services for clients on a local, regional, national and international level.

International Masonry Institute

www.imiweb.org

1406 Bus Hwy 18-151 Ste 203
Mount Horeb, WI 53572
Phone: (608) 437-6871
Fax: (608) 437-6941
Contact: Pat Conway; pconway@imiweb.org

The International Masonry Institute (IMI) approach represents a strategic partnership between the International Union of Bricklayers and Allied Craftworkers (BAC) and the International Council of Employers of Bricklayers and Allied Craftworkers (ICE). Our technical resources include construction guides, case studies, product and systems information and code updates. Our design and technical assistance services include project troubleshooting, drawing and specification review and more. We offer numerous IMI continuing education programs, including lunchbox seminars, educational conferences and hands-on craft demonstrations, allowing design professionals to keep abreast of masonry industry trends and new products. AIA/CES Registered Provider.

Isthmus Architecture, Inc.

www.is-arch.com

613 Williamson St Ste 203
Madison, WI 53703-3515
Phone: (608) 294-0206
Fax: (608) 294-0207
Contact: Charlie Quagliana, AIA

As a collaborative of architects and historians, our commitment is to preserve the built environment in a manner that respects original context

and design intent. We are a full-service firm within our historic preservation specialization. The services we provide range from historic structure reports, facility assessments, master plans and national landmark nominations to restoration, rehabilitation, adaptive reuse and new construction especially within a historic context. We ascribe to National Park Service standards and sustainable design principles. Recognizing the multidisciplinary process required of many preservation projects, we attach great importance to effective teaming relationships with other A/E firms and professionals from other disciplines.

J.P. Cullen & Sons, Inc.

www.jpcullen.com

Contact: Kevin Hickman;
khickman@jpcullen.com

330 E Delevan Dr
Janesville, WI 53547
Phone: (608) 754-6601
Fax: (608) 754-9171

13040 W Lisbon Rd Ste 900
Brookfield, WI 53005
Ph: (262) 781-4100
Fax: (262) 781-6300

If experience and longevity in business are important to your choice of construction firm, you'll want to consider partnering with J.P. Cullen & Sons, Inc. You'll be associated with one of the oldest and most successful construction companies in the United States. The firm has established a clear standard for quality as the only general contractor in the state of Wisconsin to have achieved the prestigious ISO 9001 Certification. Annual construction volume exceeds \$160 million as the current generation of family ownership and a team of over 500 employees perpetuates the legacy of pride in workmanship that began in 1892.

Janesville Brick & Tile

www.janesvillebrick.com

1801 W Court St
Janesville, WI 53547-0564
Phone: (800) 348-1632
Fax: (608) 752-7465
Contact: Douglas "Duke" Kelly; abrickstore@hoiceonemail.com

Face brick distributor.



AIA Wisconsin
is a full-service distributor of
AIA Contract Documents.
(608) 257-8477

Jenkins Survey & Design Inc.

jsdinc.com

161 Horizon Dr Ste 101
Verona, WI 53593
Phone: (608) 848-5060
Fax: (608) 848-2255
Contact: dave.jenkins@jsdinc.com

N22W22931 Nancy Ct, Ste 3
Waukesha, WI 53186
Phone: (262) 513-0666
Fax: 262-513-1231

Contact: Richard K. Wagner, Vice President

Site/civil engineering for commercial, industrial & residential projects, surveying & mapping and planning & development.

Johns Manville

www.jm.com

311 Church St
Lodi, WI 53555
Phone: (608) 592-6700
Fax: (608) 592-7198
Contact: Bill Moody; moodyw@jm.com

Manufacturer of commercial roofing products.

K

Kapur & Associates, Inc.

www.kapurengineers.com

7711 N Port Washington Rd
Milwaukee, WI 53217-0000
Phone: (414) 351-6668
Fax: (414) 351-4117
Contact: Amber Burke

Kapur & Associates, Inc., offers comprehensive engineering services, spanning eight core competencies with a staff of 100 professionals and two branch offices. It is our expectation to expand our alliances within the AIA membership providing quality engineering services with a strong focus on civil site design, electrical design, environmental, site survey and construction management. We have become a trusted business partner and leader by providing exceptional expertise and technical knowledge across every phase of a project. We thrive on forging a close, professional and honest relationship with our clients and partners.

The Karma Group

www.AttainKarma.com

424 S Monroe
Green Bay, WI 54301
Phone: (800) 236-6685 x 136
Contact: Tonita Proulx; tproulx@etkg.com

We deliver growth innovation, organization brand development and professional marketing and advertising services to a range of high profile brands that are regional, national and international in scope. We utilize a customer-centric approach that puts our client's customer at the center and encompasses all areas of strategy, brand development, research, messaging and delivery, allowing for 360 degree customer-centric brand modeling. This process is designed to generate multiplying ROI and is a continuous, self-adjusting effort that responds to changing market dynamics.

Kinziegreen Marketing Group

www.kinziegreen.com

915 Fifth St
Wausau, WI 54403
Phone: (715) 845-4251
Fax: (715) 842-3399
Contact: Kirk Howard; kirk@kinziegreen.com

Kinziegreen Marketing Group (Wausau, WI). Grow your brand and your business with the help of a team of specialists with a successful track record marketing to the architectural/construction industry. We have served leading commercial window manufacturers, architectural finishers, ventilation equipment manufacturers, floor manufacturers and more. Need to build a brand, Web site, ad campaign, marketing plan, trade show booth? Our strategizers, writers and designers will work with you to create effective materials. Beyond that, we know how to reach your varied targets: architects, builders, owners, manufacturers, engineers, school boards, government officials. For "Better thinking. Better results." visit kinziegreen.com or call (715) 845-4251.

Kraemer Brothers, LLC

www.kraemerbrothers.com

925 Park Ave
P.O. Box 219
Plain, WI 53577-0219
Phone: (608) 546-2411
Fax: (608) 546-2509
Contact: Reed Andrew;
randrew@kraemerbrothers.com

Kraemer Brothers, LLC is a construction leader in Wisconsin with an annual volume of approximately \$100 million. Kraemer Brothers self-performs all concrete, masonry, steel erection and carpentry work, thus assuring total control over critical schedule items. Its unblemished record of timely project completion is a reflection of its commitment to quality workmanship, reliable service and integrity in relationships.

The Kubala Washatko Architects Inc.

www.tkwa.com

W61N617 Mequon Ave
Cedarburg, WI 53012-2017
Phone: (262) 377-6039
Fax: (262) 377-2954
Contact: Wayne Reckard; wreckard@tkwa.com

Since 1980, The Kubala Washatko Architects, Inc. have offered a wide range of architectural, planning, and interior design services to a regional and national clientele. Our award winning work includes commercial and retail centers, environmental centers, educational institutions, multi-family residences, museums, religious facilities, performing arts centers, and hospitality projects. Areas of specialty include sustainable design and historic preservation. In 2004, the Schlitz Audubon Nature Center in Bayside became the first LEED™ Gold Certified new building in Wisconsin.

Kueny Architects, LLC

www.kuenyarch.com

10505 Corporate Dr Ste 100
Pleasant Prairie, WI 53158
Phone: (262) 857-8101
Fax: (262) 857-8103
Contact: Jon P. Wallenkamp

A Kenosha area practice based on 46 years of experience in community involvement, concern and development. Specific interests include the environment, energy conservation and long life, low maintenance, quality construction. Designs reflect personal expression and sensitivity.

L.J. Geer Design

2554 E Johnson St
Madison, WI 53704-4911
Phone: (608) 239-8375
Fax: (608) 244-9415
Contact: Lisa J. Geer, ASLA

LJGeer Design provides landscape architecture design and consulting services. The firm principal is a registered landscape architect and a LEED accredited professional specializing in sustainable site design. With 19 years in the profession, the principal's areas of expertise include therapeutic gardens, wetland delineation and design, native restoration, and alternative stormwater design and calculations. Specialized serviced include WI DNR stormwater and grading permits and complete site design, specifications and construction documents.

Lafarge North America

www.lafargenorthamerica.com

10201 W Lincoln Ave Ste 202
Milwaukee, WI 53227
Phone: (414) 545-6220
Fax: (414) 545-5453
Contact: Andrea Breen;
andrea.breen@lafarge-na.com

3210 Watling St
East Chicago, IN 46312
Contact: Tom Carrozza;
tom.carrozza@lafarge-na.com

Lafarge North America Inc. is the largest supplier of cement in North America. We have North America's most extensive distribution network, and is a leader in marketing cement-related products such as fly ash, slag and slag aggregate. An essential part of our business is the 15,500 people we employ. Our employees provide customers with technical, engineering, and research support to implement applications of our products to meet stringent structural and environmental demands. Lafarge North America also participates in partnerships such as Habitat for Humanity. Our employees volunteer at Habitat worksites, and we contribute products to the world's premiere building charity.

Lang Associates, Inc.

www.langassociates.net

510 N 17th Ave
Wausau, WI 54401
Phone: (715) 845-1333
Fax: (715) 848-9156
Contact: Randy Lang; rlang@langassociates.net

1496 Bellevue St
Green Bay, WI 54311
Phone: 920-468-6808
Fax: 920-468-6686
Contact: Dan Hanson,
dhanson@langassociates.net

Lang Associates, Inc., established in 1981, is a full-service consulting engineering firm specializing in mechanical, electrical, technology, telecommunications, security, plumbing, and fire protection design. Our project experience includes engineering design for municipal buildings, town halls, police and fire stations, community centers, governmental, health care, educational, criminal justice, corporate, financial, commercial, industrial, and water/wastewater facilities.

Larson Engineering of Wisconsin

www.larsonengr.com/wi.htm

1500 N Casaloma Dr Ste 302
Appleton, WI 54913-8219
Phone: (920) 734-9867
Fax: (920) 734-9880
Contact: Mark E. Mayer; info@larsonwi.com

Larson Engineering of Wisconsin is an established and growing multi-disciplined engineering firm with talented and experienced personnel. We have provided structural engineering for nearly every type of project. Civil engineering focuses on the design of building sites, storm water and utilities. At Larson Engineering our range of skills and strong sense of service gives our clients, large and small, the depth of experience they demand with the personal attention they deserve.

LHB, Inc.

www.lhbcorp.com

21 W Superior St Ste 500
Duluth, MN 55802-2085
Phone: (218) 727-8446
Fax: (218) 727-8456
Contact: Joellyn Gum;
joellyn.gum@LHBcorp.com

250 3rd Ave N Ste 450
Minneapolis, MN 55401
Ph: (612) 338-2029 Fax: (612) 338-2088
Contact: Liz Wortman;
Liz.Wortman@LHBcorp.com

Established in 1966, LHB provides practical and cost-effective design solutions for government, housing, health care, education, workplace, pipeline and public works. Having all disciplines together streamlines communication keeping projects on time and budget. Services include architecture (design, feasibility studies, facility maintenance), interiors (image, space

programming, finishes, furniture), landscape architecture (site plans, erosion control, wetlands), survey (boundary, legal), civil (transportation, municipal/public works, water resources/environmental), structural (industrial and building structures, structural investigations) and mechanical/electrical engineering (lighting, HVAC, telecommunications distribution, piping, energy analysis.) Special services include high performance sustainable design, community consensus building and historic preservation.

Tom D. Lynch, CSI

www.tomlynchconsultant.com

N3231 Tipperary Point Rd
Poynette, WI 53955-9416
Phone: (608) 635-2607
Fax: (608) 635-4190
Contact: Tom D. Lynch, CSI;
tdmjlynch@aol.com

Tom D. Lynch is a technical consultant to the ceramic tile industry. His thirty nine years experience include becoming a union tile setter by age twenty one, spending twenty years as a tile contractor in the States of Wisconsin and Alaska, and three years as the U.S. Technical Services Manager for the largest manufacturer of tile-setting mortars and grouts in the world. This technical exposure at the national level coupled with his many years of practical experience in the field uniquely qualifies Mr. Lynch as one of the most knowledgeable ceramic tile consultants in the industry. Specifications, product recommendations, and on-site evaluations of installation failures are the services offered.

M

M.A. Mortenson Company

www.mortenson.com

17975 W Sarah Ln
Brookfield, WI 53045
Phone: (262) 879-2500
Fax: (262) 879-2510
Contact: Alicia Dupies;
alicia.dupies@mortenson.com

Incorporated in 1954, M. A. Mortenson Company is a privately held corporation owned by the Mortenson family. Today, Mortenson has grown to over 1,800 team members with project operations in 47 states and a number of select international locations. With project costs ranging from under \$1 million to more than \$300 million, Mortenson is involved in a wide variety of project types, including health care, hospitality, corporate, education, high-tech manufacturing, network/data, and sports facilities. Ranked as one of the largest general contractors in Wisconsin, Mortenson provides a complete range of total construction services, including program management, preconstruction, general contracting, construction management and design-build.

Mackesey and Associates, LLC

www.mackesey.com

6000 Gisholt Dr Ste 200
Madison, WI 53713-4816
Phone: (608) 270-1178
Fax: (608) 270-1192
Contact: Paul A. Mackesey;
paul@mackesey.com

Mackesey and Associates, LLC, is a foodservice and laundry design and consulting firm. Our goal is to provide design and management consulting services in accordance with the needs and requirements of our clients. Our capabilities include process engineering, operations reviews, market and feasibility studies, bench marking, facility program development, foodservice and laundry facility design, operational implementation and follow-up services.

Manomin Resawn Timbers

mrtimbers.com

15152 Freeland Ave
P.O. 417
Hugo, MN 55038
Phone: (651) 464-1771
Fax: (651) 464-3907
Contact: sarah@mrtimbers.com

Manomin Resawn Timbers specializes in the remilling of antique timbers into wide plank flooring as well as custom cut lumber. We also provide custom installations in Wisconsin.

Martenson & Eisele, Inc.

www.martenson-eisele.com

1377 Midway Rd
PO Box 449
Menasha, WI 54952-0449
Phone: (920) 731-0381
Fax: (920) 733-8578
Contact: Jeffery W. Schulz;
jeffarch@martenson-eisele.com

Established in 1977, Martenson & Eisele, Inc., a full-service planning, surveying, engineering, environmental, and architectural firm with offices in Menasha and Omro, targets the residential, commercial, education, government, health care, and religion markets. Please go to our web site to learn more about the services we provide to the owners and developers of projects in these markets, ranging from one to 1,000+ acres.

PARADIGM

A Framework of Thought

2005 AIA Wisconsin
Convention & Expo

May 4 & 5, 2005

www.aiaw.org

Marvin Windows and Doors

www.marvin.com

PO Box 100

Highway 11 West

Warroad, MN 56763

Phone: (218) 386-1430

Fax: (218) 386-4027

Contact: Doug Johansson; dougjo@marvin.com

Marvin Windows and Doors, a premier manufacturer of quality wood and clad wood windows and doors, offers products in more than 11,000 standard sizes, shapes and styles. And that's not even counting our custom capabilities. There are no warehouses of finished windows, no stockpiles of standard sizes. Even our standard offerings could have any variety of options on them. Each window and door is Made for you to your exact specifications.

MasterGraphics Inc

www.masterg.com

810 W Badger Rd

Madison, WI 53713

Phone: (608) 256-4884

Fax: (608) 210-2810

Contact: mastergraphics@masterg.com

MasterGraphics offers complete CAD solutions, reprographic services and supplies. As an Authorized Autodesk Partner, we offer architectural, civil/GIS and manufacturing software solutions, training and support.

Mead and Hunt, Inc.

www.meadhunt.com

6501 Watts Rd

Madison, WI 53719-2700

Phone: (608) 273-6380

Fax: (608) 273-6391

Contact: Paul Powers, AIA, NCARB;
paul.powers@meadhunt.com

Mead & Hunt is an employee-owned firm boasting 300 architects, engineers, planners and support staff in offices nationwide. Since our founding in 1900, we have been serving clients in both the public and private sectors. Services include space programming, facility needs assessments, architectural/interior design, visualization, cost estimating, environmental studies and construction administration. In addition to our architectural and building engineering staff, we offer the services of historic preservation specialists and surveyors. Areas of project specialization include aviation, military and transportation, municipal services, public, commercial and industrial facilities and water resources and environmental services.

MojoWeb Productions, Inc.

http://www.mojoweb.com/

2006 N 117th St

Wauwatosa, WI 53226

Phone: (414) 732-3397

Contact: Pat McKenna;

mojoman@mojoweb.com

Since 1997, MojoWeb Productions has prided itself on being more than just a web design

boutique. Our mission begins with design and proceeds to educating and working with our clients to develop Internet strategies that complement the goals and objectives directing their enterprises.

MSI General Corporation

www.msigeneral.com

PO Box 7

Oconomowoc, WI 53066

Phone: (262) 367-3661

Fax: (262) 367-7390

Contact: Don Frost; don@msigeneral.com

MSI General Corporation, a design/build general contractor located in Oconomowoc, is a leader in the design and construction of commercial, educational, industrial, municipal, religious and retail facilities in southeastern Wisconsin. MSI General was founded in 1957 and is celebrating over 47 years in the industry.

N

Nielsen Building Systems/Kalwall/ Structures Unlimited

www.nbs-inc.net

4820 Six Mile Rd

Racine, WI 53402

Phone: (262) 681-0676

Fax: (262) 681-1812

Contact: Dale Nielsen; dale@nbs-inc.net

NBS is the Wisconsin installing distributor for the Kalwall Corp and Structures Unlimited Clearspan skylight and building systems. Kalwall is celebrating its 50th Year Anniversary as the inventor of the translucent panel system. Kalwall® is the only trusted name in the business due to its structural integrity and continuing innovations in color stable resin system, its unmatched fire properties and now the only skylight or wall system in the world that can achieve an R20 insulation with a 20% light transmission. Kalwall® Plus Nanogel® has revolutionized the light transmitting industry for insulation levels from U Values from .53 to .05 in NFRC certified panels and systems.

P

Paragon Design Group LLC

www.paragondg.com

2776 N Sholes Ave

Milwaukee, WI 53210-0000

Phone: (414) 449-1555

Fax: (414) 449-2425

Contact: Brian Boeding; brianb@paragondg.com

Paragon Design Group, LLC, is a professional design firm specializing in site design, landscape architecture and planning services. Working with many of Wisconsin's finest architects, developers and communities, we have completed a range of projects including education, religious, civic centers, justice, fire stations, medical, senior housing, retail, corporate, commercial, industrial, downtown revitalization, streetscapes, athletic complexes, parks and residential. Our

scope of services includes programming, site analysis, site planning, demolition, layout, erosion control, landscape, green roofs, and LEED certification. Our holistic approach produces projects that meet the needs of our clients, the community and the environment.

P

Performance Elevator Consulting, LLC

PO Box 464

Mequon, WI 53092-0646

Phone: (262) 242-3077

Fax: (262) 242-3077

Contact: Paul S. Rosenberg;

PerformElevCons@wi.rr.com

Providing elevator consulting services with an emphasis on existing equipment. Specializing in design, specifications and administration for modernization and repairs, performance based maintenance specifications, equipment evaluations and maintenance audits, ADA compliance, and certified safety inspections. Formerly part of Northwestern Elevator Co. ownership group. References available upon request.

Pernsteiner Creative Group Inc.

www.pernsteiner.com

7831 E Bush Lake Rd Ste 100

Bloomington, MN 55439

Phone: (952) 841-1111

Fax: (952) 841-3460

Contact: Todd S. Pernsteiner;
info@pernsteiner.com

Be bright. Be bold. Stand out. Pernsteiner Creative Group is a relationship-driven graphic design firm specializing in integrated marketing communications that demand attention. The firm caters to business-to-business communicators in the construction, design and product manufacturing arenas. Pernsteiner Creative excels in the creation of marketing tools that fit clients' personalities: advertising, brochures, logos, exhibit graphics, websites and publications. The company's well-developed creative process ensures that client messages are heard, noticed and talked about. Pernsteiner's work has been recognized by local and national awards programs and industry publications. Visit our website at www.pernsteiner.com to view our work and for more information.

Pierce Engineers Inc.

www.pierceengineers.com

241 N Broadway Ste 500
Milwaukee, WI 53202-0000
Phone: (414) 278-6060
Fax: (414) 278-6061
Contact: Richard C. Pierce;
pe@pierceengineers.com

10 W Mifflin St Ste 205
Madison, WI 53703
Phone: (608) 256-7304
Fax: (608) 256-7306
Contact: Jason C. Sorci;
jcsorci@pierceengineers.com

Pierce Engineers, Inc.'s (PE) staff of professionals provides structural engineering consulting services for a variety of project types, including industrial, office, retail, hospitality, education, health care, parking ramps, institutional, ecumenical and historic renovation projects. The firm specializes in designs with structural steel, masonry, timber, post-tensioned, conventionally reinforced and precast concrete systems. PE's staff practices nationally and has professional registrations in 23 states and Washington D.C. The technical expertise offered by PE's staff leads to innovative designs and construction techniques while maintaining simplicity through engineering ingenuity. Knowledge and experience results in highly imaginative and creative approaches to architectural and engineering problem resolution.

PLANNING Design Build, Inc.

www.planningdesignbuild.com

901 Deming Way Ste 102
Madison, WI 53717
Phone: (608) 836-8055
Fax: (608) 836-5818
Contact: Ken Pientka, COO;
ken.pientka@planningdesignbuild.com

PLANNING Design Build is a design-led design-build firm. PLANNING specializes in office buildings, retail complexes, destination resorts and indoor water parks, life science and facilities. A leader in the growing design/build market, PLANNING provides complete in-house architectural, interior design, structural, plumbing, HVAC & electrical engineering, sustainable design and general contracting services for its clients. On each project, we utilize our proprietary Integrated Planning ProcessSM to ensure that we meet every project goal. This process makes the building process easy for our clients and delivers a functional, cost effective, high quality project in an efficient timeframe.

Plunkett Raysich Architects, LLP

www.prarch.com

11000 West Park Place
Milwaukee, WI 53224
Phone: (414) 359-3060
Fax: (414) 359-3070
Contact: David J. Raysich, AIA

2810 Crossroads Dr Ste 1000
Madison, WI 53718
Phone: (608) 240-9900
Contact: Jane A. Carroll; jcarroll@prarch.com

Plunkett Raysich Architects provides complete planning, architectural and design services. We are committed to creating quality Architecture that combines function with imagination. Buildings should be inviting, inspire the people who use them, and have a sense of place in the community they are part of. Plunkett Raysich has been recognized for design excellence for health care, education, corporate, long-term care/residential, religious, and community facilities. Our buildings are created from the vision of our clients with a focus on the people who use them. Plunkett Raysich Architects. Intelligent design. Inspired results. To see our design work, visit www.prarch.com.

Poblocki Sign Company LLC

www.poblocki.com

922 South 70th St
Milwaukee, WI 53214-3163
Phone: (414) 453-4010
Fax: (414) 453-3070
Contact: Charles Amundsen; cga@poblocki.com

As a manufacturer of exterior and interior signage since 1932, Poblocki Sign Company is a leader in the architectural sign industry and one of the largest custom sign fabricators in the United States. Located in a 110,000 square-foot, state-of-the-art facility in Milwaukee, Poblocki Sign Company is a full-service designer, manufacturer and installer of custom exterior and interior systems for the health care, educational, retail and corporate markets. Poblocki & Sons' customer base includes Target, Dayton Hudson, Miller Brewing Company, Disney, Midwest Express, Rockwell, Marshfield Clinics and United Parcel Service, in addition to school districts, sports facilities, libraries, museums and medical centers throughout the U.S.

Portico Architects, LLC

www.porticoarchitects.biz

W204N13883 Goldendale Rd
Richfield, WI 53076-9731
Phone: (262) 389-5436
Fax: (262) 677-2082
Contact: mlane@porticoarchitects.biz

Portico Architects, LLC is a fairly new name although our staff has experience in the profession spanning decades. We strive to provide our clients sound and creative design while utilizing the most current construction methods and materials. We are also firm believers in being stewards to our environment and communities. We have experience in a broad pallet of projects,

but excel at projects requiring a high development of identity or iconography, community service complexes, and multi-level / multi-tenant facilities. Our ultimate goal is always to provide services that produce projects that will stand the test of time.

Potter Lawson, Inc.

www.potterlawson.com

15 Ellis Potter Ct
Madison, WI 53711-2456
Phone: (608) 274-2741
Fax: (608) 274-3674
Contact: Beth A. Prochaska;
bethp@potterlawson.com

Potter Lawson has built a reputation for excellence by consistently providing quality design services to our clients. Our specialized staff exceeds the expectations of our education, justice, research, and corporate clients by combining the owner's goals with economic, functional, and sustainable considerations that create projects of lasting value. Our architects, engineers, and interior designers provide award-winning designs in addition to strategic facilities planning, master planning, facility evaluation, programming and space planning.

PPG Industries - Pittsburgh Paints

www.ppgideascape.com

976 Newbury Dr
Crystal Lake, IL 60014
Phone: (312) 286-6082
Fax: (815) 477-0206
Contact: Michelle Goodeve;
mgoodeve@ppg.com

PPG Ideascapes. Where you can find the architectural glass, coatings, and paint choices you want, together with technical tools, support and expertise of one of the world's most experienced and innovative building products manufacturers.

Premium Planview

1753 Dunnwood Way
Oregon, WI 53575-2302
Phone: (608) 873-3748
Fax: (608) 873-3855
Contact: John S. Eagon; premplanvw@aol.com

Premium Planview was created May 1995 by John S. Eagon, AIA. Premium Planview works with building designers to assure plans used to construct buildings show compliance with applicable building codes. Premium Planview provides clients with: Information needed to prepare building plans that comply with Wisconsin and other recognized building codes. Plan review services when and where clients need them. Quality plan review services recognized by government agencies enforcing building code regulations. Internal processes to produce code compliant plans to reduce the need for plan review services. Mr. Eagon has 30 years experience working as a building code consultant.

The Preview Group

preview-group.com

316 W Fourth St
Cincinnati, OH 45202
Phone: (513) 621-2109
Fax: (513) 621-7297
Contact: David Collins; pregrp@aol.com

The Preview Group, Inc. is an architectural consulting firm specializing in building codes and regulatory issues affecting construction. Preview provides analyses of projects and assists designers and building owners in determining the best path toward building code compliance. Preview has played a major role in gaining code approval for a wide variety of projects and clients, including those in the private sector and governmental agencies.

Q

Quikrete Wisconsin, Inc.

www.quikrete.com

W225N6236 Village Dr
Sussex, WI 53089
Phone: (262) 246-4501
Fax: (262) 246-4849
Contact: rgreenwood@quikrete.com

R

R.L. Merlie Construction Co.

www.rlmerlie.com

Rt 2 Box 110 B
Spring Green, WI 53588-9221
Phone: (608) 588-2851
Fax: (608) 588-9181
Contact: Richard Merlie

R. L. Merlie Co. collaborates with architects and builders to provide and erect timber frame structures. Homes, additions, barns and commercial buildings utilizing Hearthstone Log or Timber Frames have been built. Our Timber Frame system is flexible for design and is used for styles ranging from contemporary, rustic to period reproduction. Frame enclosure systems of Structural Insulated Panels result in energy efficient structures while allowing the exposed heavy timbers to become part of the projects beauty. Builders since 1979, many projects can be seen on their web site at www.rlmerlie.com

Resource Staffing Consultants

www.rscqp.com

PO Box 207
Suamico, WI 54173-0207
Phone: (920) 822-1772
Fax: (920) 822-1329
Contact: Thomas Ward

S

Schuler Shook

www.schulershook.com

123 3rd St N Ste 210
Minneapolis, MN 55401
Phone: (612) 339-5958
Fax: (612) 337-5097
Contact: Michael DiBlasi;
mdiblasi@schulershook.com

750 North Orleans Ste 400
Chicago, IL 60610
Phone: (312) 944-8230
Fax: (312) 944-8297
Contact: Robert Shook,
rshook@schulershook.com

1215 San Marcos
Arlington, TX 76012
Phone: (817) 461 5442
Fax: (817) 274-4741
Jack Hagler, jhagler@schulershook.com

Architectural Lighting Design / Theatre Consulting --Schuler Shook collaborates with the design team to create innovative Lighting Design solutions. Our theatre consulting and planning services include a full range of design and specification services.

Shaw-Lundquist Associates, Inc.

www.shawlundquist.com

2757 W Service Rd
St Paul, MN 55121-1230
Phone: (651) 454-0670
Fax: (651) 454-7982
Contact: Paul Nelson,
pnelson@shawlundquist.com

Construction manager, design/builder, general contractor delivering facility services to the following market segments: commercial, industrial, institutional, educational, religious, retail, and multi-unit housing.

Skot Weidemann Photography

Weidemannphoto.com

6621 Century Ave
Middleton, WI 53562
Phone: (608) 836-5744
Fax: (608) 836-7121
Contact: Skot Weidemann;
Skot@Weidemannphoto.com

Quality custom photography featuring architectural interiors, exteriors, custom aerial photography, studio and location commercial photography, using digital and traditional film media.

SL Maher Architectural Group Inc.

www.slmarch.com

4615 Vettelson Rd Ste 100
Hartland, WI 53029-0000
Phone: (262) 369-9977
Fax: (262) 369-9784
Contact: sean.maher@slmarch.com

Expertise in complete architectural services including master planning, space planning, programming, budgeting, site evaluation, design build delivery methods, coordination of mechanical, electrical, plumbing, civil engineering and specialty consultants. At SL Maher Architectural Group our goal is to develop long-term relationships with clients who share our desire for creating quality environments by providing expert design, and by aligning ourselves and collaborating with top quality construction professionals, consultants and contractors to achieve and exceed your project program goals and enhance the places where you live, work and play. Office, retail, industrial, manufacturing, hospitality, municipal, religious, educational, single and multi-family residential.

Somerville, Inc.

www.somervilleinc.com

2100 Riverside Dr
Green Bay, WI 54301
Phone: (920) 437-8136
Contact: jsomerville@somervilleinc.com

Somerville, Inc. offers a complete range of architecture/engineering services for the built environment. We have over 58 years of comprehensive experience to the Wisconsin community. Extensive experience on over 6,000 projects including commercial, industrial, retail, religious, educational, health care and municipal buildings. Our accomplished team of professionals provides clients with multi-disciplinary expertise through a single point of contact. We serve our clients from program development and space planning through construction documents and construction management and offer a unique design/build alternative approach called Somerville Single Source. Our expanded range of services includes feasibility studies, master planning and referendum support.

Spancrete Industries, Inc.

www.spancrete.com

N16W23415 Stoneridge Dr
Waukesha, WI 53188-0828
Phone: (414) 290-9000
Fax: (414) 290-9125
Contact: Greg Holewinski

Spancrete Industries, Inc., headquartered in Waukesha, Wisconsin, is a producer of structural and architectural precast concrete products and serves the Midwest region. Spancrete provides quality concrete products including prestressed, precast hollowcore plank and wall panels, concrete beams, columns, tees, bridge girders, sound walls, customized architectural form cast products and offers full design/build service. With production facilities in Waukesha, Valders and Green Bay, Wisconsin and Crystal Lake, Illinois, this 58-year company has helped thousands of companies build and expand their facilities. Spancrete's commitment to quality, service and durability has led to the growth of its own company as well as the companies it serves.

Spring Creek Engineering LLC

www.springcreekengineering.com

W10909 Lake View Dr
Lodi, WI 53555
Phone: (866) 480-0777
Fax: (866) 480-0777
Contact: Joe Bainbridge;
joe@springcreekengineering.com

Spring Creek Engineering is an electrical engineering firm with the ability to create multidiscipline project teams to suite a specific projects needs. In-house services include advanced power, lighting, daylighting and systems design as well as additional services in audio and theatrical lighting not often associated with traditional electrical practice. SCE's experience includes successful projects in a wide range of health care, laboratory, commercial, performing arts, houses of worship, office, retail, education, institutional, industrial, and government facilities. Our design, technical and project management experience provides the required communication and a solid foundation to insure projects are produced to client expectations, on time and within established project budgets.

Strang, Inc.

www.strang-inc.com

6411 Mineral Point Rd
Madison, WI 53705-4395
Phone: (608) 276-9200
Fax: (608) 276-9204
Contact: Ann E. Leahy; leahy@strang-inc.com

Founded in 1935, Strang, Inc. is an architectural, engineering and interior design firm specializing in research and development, corporate office, higher education and telecommunications facilities. In addition to HVAC, electrical and plumbing design, our engineering services include building communications and security systems, energy analysis and management studies, safety and fire protection, maintenance

programs, site engineering, mechanical systems analysis, cost estimating, and start up assistance. Strang's interior designers specialize in creating interior spaces that support our client's strategic goals, reflect their corporate image and provide flexibility to accommodate growth. Services include interior design, space planning and utilization studies, programming, furniture selection/procurement, cost estimating/bidding, identification of corporate space standards and facility management.

STS Consultants, Ltd.

www.stsconsultants.com

11425 W Lake Park Dr Ste 100
Milwaukee, WI 53216
Phone: (414) 577-1341
Fax: (414) 359-0822
Contact: Paul Tarvin; tarvin@stsconsultants.com

1035 Kepler Dr
Green Bay, WI 54311
Phone: (920) 468-1978
Contact: Pete Harris; harris@stsconsultants.com

STS Consultants, Ltd. (STS), a leader in the A/E/C industry since 1948, makes it our business to deliver innovative, high-quality solutions to our clients. Our diverse range of services and experienced employees give us a clear understanding of the challenges behind our complex projects, which often results in increased productivity or cost savings for our clients.

T

Taylor Technologies, Inc.

www.taylor-tech.com

10000 Innovation Dr Ste 160
Milwaukee, WI 53226
Phone: (800) 236-2070
Fax: (906) 779-1353
Contact: Alan Taylor; ataylor@taylor-tech.com

Taylor Technologies, Inc. (TTI) are experts at integrating technology, people, and process. TTI's client-specific strategic services are increasing our clients' efficiency and effectiveness by improving their business processes, through better utilization of their design software and the data it provides. We are continually enhancing our toolsets for gathering and assessing our clients' CAD and graphics related data, systems, and workflow. TTI is an Autodesk authorized provider of building solutions, including AutoCAD®, Revit®, Architectural Desktop, Buzzsaw® and more.

TMI Storage Systems

www.tmisystems.com

TMI Storage Systems
50 South 3rd. Ave. West
Dickinson, ND 58601
Phone: (701) 456-6716
Fax: (701) 456-6700
Contact: Kevin Kovash;
kkovash@tmisystems.com

TMI Storage Systems is a full service company that provides laminate casework, countertops of all styles and architectural woodwork. TMI Storage Systems also provides pre-bid planning and budget services as well as post contract project management and installation.

Trenwyth Industries

www.trenwyth.com

238 Charles Ave
South Beloit, IL 61080
Phone: (608) 274-4481
Fax: (608) 274-5552
Contact: Ron Haufle; rhaufle@aol.com

Trenwyth Industries offers high-end architectural concrete masonry units in unique shapes, colors and sizes. Astra-Glaze-SW+® is the perfect choice for architects who prefer the look of ceramic tile but require the durability and moisture resistance of concrete masonry. Astra-Glaze-SW+ is even available in custom colors to match your creativity! Both Astra-Glaze-SW+ and Verastone™, Trenwyth's premium recycled ground face masonry units, contain a significant amount of recycled content and may contribute LEED® points. Visit us at www.trenwyth.com for information on our entire line of quality glazed, ground face and textured masonry units or to schedule an AIA accredited Box Lunch Presentation (800-233-1924).

V

Vierbicher Associates Inc.

www.vierbicher.com

PO Box 379
400 Viking Dr
Reedsburg, WI 53959
Phone: (608) 524-6468
Fax: (608) 524-8218
Contact: jsch2@vierbicher.com

Accurate. Courteous. Responsive. Founded in 1976, Vierbicher Associates, Inc. offers engineering, water resources, landscape architecture, surveying and community development services via four Wisconsin offices. Civil engineering expertise includes infrastructure, site planning and design, grading plans, utility extension, roadway development and subdivision development. Our water resources group specializes in storm water master plans, permitting, erosion control plans, floodplain/floodway analysis, wetland delineations/mitigation, well design, and water treatment plant design. Landscape architecture specialties include parks and trails, riverfronts, planting plans, streetscaping, and traditional neighborhood development. The firm also provides topographic and boundary surveys, parcel mapping, GIS, market analysis, TIF, planning, and economic development.

W

Water Technology Inc.

www.watertechnologyinc.com

100 Park Ave
Beaver Dam, WI 53916-0614
Phone: (920) 887-7375
Fax: (920) 887-8850
Contact: Richard C Scott, AIA;
rscott@watertechnologyinc.com

Water Technology is a 44 person firm that designs swimming pools of all types as a consultant to architects. We have special expertise in competitive pools, indoor and outdoor leisure pools, therapy pools, waterparks, hotel and resort pools, spraygrounds, whirlpools and special use pools. Our in house disciplines include 3 architects, 2 engineers, 3 landscape architects, 2 recreation professionals, 2 construction professionals, theming specialists and an outstanding support staff. We have built the finest aquatics firm in the country right here in Wisconsin, even though we work nationally and internationally. Founded in 1983, we have designed over 550 aquatics projects.

The Weidt Group

www.twgi.com

5800 Baker Rd Ste 100
Minnetonka, MN 55345
Phone: (952) 938.1588
Contact: David A. Ejadi, AIA, LEED AP;
d.ejadi@twgi.com

The Weidt Group, recipient of the 2003 AIA Minnesota Firm Award, provides sustainable design consulting to architects, engineers, and building owners. We emphasize energy conservation, daylighting and indoor air quality, and have been helping create and validate environmentally appropriate building designs since 1977. Our services include: building systems optimization through energy modeling, daylighting design consulting & analysis, document review for energy & daylighting strategies, field verification of energy & daylighting strategies, and LEED® certification services. The Weidt Group is a member of the U.S. Green Building Council and an Energy Star Partner.

Welman Architects, Inc.

www.welmanarch.com

21675 Long View Dr
Waukesha, WI 53186
Phone: (262) 798-7000
Fax: (262) 798-7001
Contact: epurcell@welmanarch.com

Welman Architects, Inc. is a full service, architectural and interior design firm that focuses on creating innovative, high quality environments. Established in 1989, the firm currently has 24 professional architectural and interior design and support staff members in its Waukesha office. Offices are also maintained in Minneapolis, MN and Tucson, AZ. Setting Welman Architects, Inc. apart from other design firms is the active participation of the principals of the firm – experts in their fields – working directly with

the client for the duration of the project. Our project experiences include, but are not limited to: out-patient health care facilities; medical office buildings, hospitals; commercial office buildings; multi-family housing; senior living facilities; industrial and warehousing facilities; education and institutional buildings and retail developments.

Wikk Industries Inc

www.wikk.com

PO Box 167
Greendale, WI 53129
Phone: (800) 243-9455
Fax: (800) 710-9455
Contact: Scott Rajchel; scott@wikk.com

Wisconsin Architect, Inc.

www.aiaw.org

321 S Hamilton St
Madison, WI 53703-4000
Phone: (608) 257-8477
Fax: (680) 257-0242
Contact: Brenda Taylor; wiarchitect@aiaw.org

Wisconsin Architect is a quarterly design and construction industry trade journal published by AIA Wisconsin and distributed to professionals throughout the state of Wisconsin. Our focus is on architects and allied professionals. Wisconsin Architect reaches all AIA Wisconsin members as well as other design and construction industry leaders. Wisconsin Architect publishes completed projects and informative articles by architect members. For information on submitting articles and projects, visit the AIA Wisconsin Web site members area.

Wisconsin Automatic Door, Inc.

www.wadautodoors.com

5462 S Westridge Dr
New Berlin, WI 53151
Phone: (262) 860-2220
Fax: (262) 860-2225
Contact: Mike Tews;
mtews@wadautodoors.com

Providing automatic door systems to Wisconsin and Upper Michigan for 35 years. CSI Specification writing, entrance design, sales, service and installation. Projects from commercial, health care, government, mercantile and ADA to residential and industrial. Hardware integration, security entrances, local code and ANSI Standards practices. Complete systems including automatic/manual/security configurations for revolving, sliding, folding and swinging doors, along with drive-thru windows, industrial and clean room doors. Members of: AGC, AAADM, CSI & AIA. Offering two AIA certified Continuing Education Credit Programs for architects. Advanced systems, innovative products/design and professional, courteous service.

Wolfram & Associates, S.C.

www.WolframAssociates.com

6012 W Vliet St
Wauwatosa, WI 53213-2412
Phone: (414) 456-0610
Fax: (414) 456-0611
Contact: Paul Wolfram, AIA

We provide collaborative services to assist other architects in solving complex problems of: building construction technology, International Building Code compliance, materials specification research, and traditional detail design and documentation.

Wood-Lam, Inc.

230 Sussex St
Pewaukee, WI 53072
Phone: (262) 691-2000
Fax: (262) 691-8995

Z

The Zimmerman Design Group

www.ZDG.com

7707 Harwood Ave
Milwaukee, WI 53213
Phone: (414) 918-1436
Fax: (414) 476.8582
Contact: Mark Zimmerman; Mark.
Zimmerman@zdg.com

For 99 years, The Zimmerman Design Group, Milwaukee's most successful architectural firm, has focused on quality design and exemplary service. The firm is organized into studios comprised of in-house multi-disciplined professionals including planners, architects, interior designers, space planners, engineers and landscape architects who specialize in a variety of building types. ZDG's project experience includes educational facilities, training centers, hospitals, medical facilities, corporate buildings, industrial plants, recreation facilities, multi-family housing, life-care centers, jails, police stations, fire stations, DPW, city hall, retail centers and parking structures. ZDG also has demonstrated expertise in master planning, sustainable design, facilities management, and construction management services.

All human experiences are a product of the mind. This includes the experiences people have working in offices, being educated in schools, being cared for in hospitals and visiting famous architectural places. Recent advances in neuroscience (the study of the brain and mind) have begun to make it clear how humans have developed their advanced brains; and how these brains are organized to enable us to use our mind to remember the past, think about the future and experience the present.

Research being performed during the initial stages of development of the Academy of Neuroscience for Architecture (ANFA) for the American Institute of Architects (AIA) will explore ways in which links might be made between the intuitive understanding of architects and the rapidly growing knowledge base of neuroscience. The work of Stanley Graven on understanding how neonatal care units should be designed to better provide for the developing brains of premature infants is one of the examples currently available. Graven has shown that both visual and auditory development may be impaired in premature infants exposed to inappropriate lighting and noise levels in neonatal intensive care units (NICUs).

All human experiences are a product of the mind.

Beyond Intuition, a 25-minute film, explores efforts to study the relationships among the brain, the mind and architecture. The film includes footage from the "Healthcare Facilities Design and Neuroscience Workshop," held in 2002 at Woods Hole, Massachusetts. An interdisciplinary group of architects and neuroscientists spent two days discussing possible connections between the study of the mind and the built environment.

The film also explored the impact of the inspiring architecture of Assisi, Italy on Dr. Jonas Salk during his time spent developing the polio vaccine and its subsequent influence on the creation of the Salk Institute with architect Louis Kahn.

EDITOR: For more information, visit the Web site of the Academy of Neuroscience For Architecture at www.neuroscienceforarchitecture.org. The author is the Latrobe Fellow of the AIA College of Fellows and the executive director of the Academy of Neuroscience for Architecture in San Diego. He will present a keynote address at the 2005 AIA Wisconsin Convention & Expo. Convention information is available at www.aiaaw.org.

PARADIGM

A Framework of Thought

**2005 AIA Wisconsin
Convention & Expo**

May 4 & 5, 2005

www.aiaaw.org

Using the new AIA Contract Documents software is even easier with the release of the first major update since it was launched in October 2003. The ability to edit A, B, and C series contract documents in Microsoft® Word was such a fundamental feature that users asked the AIA to expand the capability to include the Contract Administration and Project Management Forms, otherwise known as the G-Forms. Working in close cooperation with users, the American Institute of Architects (AIA) updated the software so that all 80 AIA contract documents can be completed using Microsoft® Word. Current users can download the update from the AIA Web site at no charge.

This greater flexibility provides users with the option to enter data directly into a Word document or automatically from a Project Dialog or document-specific dialog. "We listened carefully to suggestions from our users on ways to improve upon the new software," said AIA Executive Vice President/CEO Norman L. Koonce, FAIA. "Now, the update makes it easier for the project team to collaborate on AIA contracts and forms at the construction site or wherever they're located."

A key benefit of the update is that a satellite version of the new software is no longer necessary because anyone with Microsoft® Word installed on their computer can complete drafts of all of the AIA documents (A, B, C, D and G series documents) using Word. Additionally, the updated software provides a variation of the G701™—2000, Change Order Form, and G702™—1992, Application and Certificate for Payment, for use by subcontractors

Most importantly, working in the software will become more intuitive because all the documents follow the same process from their initial creation to generation of a final. The updated AIA Contract Documents software offers users a choice of two parallel paths to creating draft documents: either through dialogs that include their validation functions, mathematical functions, data storage and re-use capabilities, or by bypassing dialogs altogether and working completely within the Microsoft® Word environment.

The update also expands the software's User Guide and Program Help features to provide guidance on how to better configure the software and take full advantage of the dialog functions. This first major update builds on the AIA's commitment to provide software that helps users create, share, and manage documents with ease.

EDITOR: For more information on the AIA Contract Documents software update or to download and purchase the software, go to www.aia.org or call 1 (800) 365-2724.



A LONG HISTORY OF EXCELLENCE

- The first AIA contract documents were published in 1888. Today, there are more than 80 contracts and administrative forms available from the AIA.
- The AIA Contract Documents have been finely tuned during their 116-year history to reflect the latest changes in law and construction industry practices. As a result, the comprehensive contracts and forms have been tested by the courts and are widely considered the industry standard.
- The AIA Contract Documents are developed and revised based on a set of Drafting Principles assembled by the AIA. Therefore, the AIA documents are drafted to assure that industry opinion is solicited from all parties whose interests are significantly affected by a particular document. Given this, the AIA Contract Documents enjoy a wide reputation for fairness to all parties.

What major changes to the new software were made?

There are two key areas of improvements in response to user requests. First, draft Contract Administration/Project Management forms (more commonly known as the G forms) will now be delivered to the user as Microsoft® Word forms, instead of PDF documents. Second, all user-inserted text in the draft G forms is editable using Microsoft® Word, whether the text was entered using a project dialog, a document-specific dialog, or entered by the user directly into the Word form.

Why are these changes significant?

Most importantly, using the software will become more intuitive because all the documents will follow the same process from their initial creation to generation of a final. The updated AIA Contract Documents software offers users a choice of two parallel paths to completing documents: either through dialogs which include their validation functions, mathematical functions, data storage and re-use capabilities, or by bypassing dialogs altogether and working completely within the Microsoft® Word environment.

Additionally, users will be able to use an existing draft (created in this new Word form format) as the basis for creating a new draft by simply editing the user-inserted text. Many users who were familiar with EF3.0 PLUS told us that they preferred this approach to creating documents.

Finally, the ability to edit all documents in the Microsoft® Word environment eliminates the need for satellite licenses.

How does the Update eliminate the need for satellite licenses?

With this update, anyone with Microsoft® Word installed on their computer will have the same benefits as the former E.F. 3.0 satellite license user, because they will be able to complete drafts of all of the AIA documents (A, B, C, D and G series documents) using Word. For example, an AIA Contract Documents software license holder can create a draft document and e-mail it to any collaborator who has Microsoft® Word. The collaborator can edit the draft and e-mail it back to the license holder (or

place it on a shared network drive), who can convert the draft into a final document.

The benefits of this approach are that the collaborator doesn't need AIA Contract Documents software, doesn't need a satellite license, and doesn't need technical support. The collaborator only needs Microsoft® Word, which is widely prevalent.

What other improvements are included with this software update?

The software update includes the following enhancements:

- A305, B431, G601 and G602 have been converted from Word forms to Word documents, providing users with complete editing flexibility, with nearly all Word functionality, access to the custom templates feature, and variance checking.
- Users can now create Subcontract Variations for G701 / G702/ G703. The Subcontract Variations are not new or separate AIA documents. They are the original AIA documents to which a series of edits have been implemented. To clearly identify these edits as changes to the standard AIA text, they are noted with underlining for added words and strike-through for deleted words.
- All of the locked project level fields on the General Conditions documents, such as those in the A201, will be unlocked, allowing users greater flexibility in editing these documents.
- The User Guide and Program Help have been expanded to provide additional guidance on the new G forms, as well as other areas regarding software configuration and working with documents and dialogs. The User Guide has been revised to add sections on installing and activating the software, working with dialogs and documents (locating, renaming and moving), and sharing documents and templates with other users. Detailed information has been added in all the key sections regarding the two document formats used in the AIA Contract Documents software: Word documents (Working Drafts), and Word forms (Form Drafts).



- To add flexibility to the D200 Word form, the template has been revised to include three blank rows at the end of each subsection. Similarly, to add flexibility to the G808 Word form, the template has been revised to include one blank row at the end of each table/section.
- The three-part G612 template has been revised and is now available as three separate templates: G612A, G612B and G612C. Meter 300 licensees will be charged five document units for generating a final G612A only. There is no additional cost for generating a final G612B or G612C.
- Default Naming of draft documents has been enhanced. The default name for draft A, B and C series documents, as well as G601 and G602, will be "Working Draft." The default name for draft D and G series documents, except G601 and G602, will be "Form Draft."
- Users who log on with "User" level permissions can now operate the AIA Contract Documents Software if they run a patch. To access this patch, Information Technology Administrators should contact AIA Contract Documents technical support.
- Numerous additional documents and dialogs have also been updated, including A401, B151, C727, G606, G702, G702CMa, G722CMa and G804. The software update install includes a readme file that details all these edits.

How will the AIA notify current users that the update is available?

All current users will be sent a notice via e-mail with detailed instructions on how to update their software. Additionally, all future renewal notices will be amended to include a mention of the availability of this update. Finally, the AIA Web site will be updated with details on the update.

When will the AIA offer a version of the software for Macintosh computers?

We are evaluating how to address the Mac community, having focused this first year on launching the new version for PC users, who comprise the majority of our customer base. With the first year coming to a close, we are addressing how best to serve Mac users. However, we haven't yet reached a point

where we can offer any reliable timeframe for developing a Mac version.

What is the price for the updated new Contract Documents software?

The updated AIA Contract Documents software will be available to current users at no charge and there will be no change in the price for software licenses for new customers. The updated software will not alter the period of time remaining on annual licenses or the number of document units remaining on Meter 300 licenses.

Where do users go to get the updated AIA Contract Documents software?

To download the updated software, go to www.aia.org



When AIA Contract Documents are in force, everyone's interests are in balance.



AIA Contract Documents were created from a consensus of contractors, developers, lawyers, and architects to balance the interests of all parties. No standard contract documents keep projects running and finishing as successfully.

- Cover all project phases.
- Paper or electronic form.
- Flexible pricing.
- Full Microsoft® Word functionality.
- Improved navigational aids.
- Formatting and collaboration options.

To learn more or to download the software, go to www.aia.org or call 1-800-365-2724.

AIA Contract Documents

Microsoft® and Microsoft® Word 2000 are either registered trademarks or trademarks of Microsoft Corporation in the United States and/or other countries. ©2003, The American Institute of Architects

2003-04 ANNUAL REPORT



2004-05

Board of Directors

James W. Shields, AIA, *President*

Lawrence J. Schnuck, AIA
Vice President

Christine Ahl-Ludwig,
Secretary/Treasurer

Patrick J. Conway, AIA

William A. Doyle, AIA

Ralph H. Jackson, Jr., AIA

James W. Miller, FAIA

Allyson D. Nemecek, AIA

Michael W. Swinghamer, AIA

Established in 1953, the Wisconsin Architects Foundation is committed to building a better Wisconsin through architectural education. This WAF mission is achieved by awarding tuition scholarships for Wisconsin architectural students and grants for educational programs that advance the profession and enhance public awareness.

Financial Report

In the fiscal year that ended June 30, 2004, the WAF received a total of \$26,235 in income from all sources. Expenditures for scholarships, grants and administration totaled \$25,338. The WAF fund equity amounted to \$365,380 at the close of the fiscal year.

WAF scholarship and grant programs depend on annual contributions from architects and allied design and construction industry leaders. In 2003-04, contributions from individuals, firms and organizations amounted to \$11,340. These included \$10,195 in regular contributions for ongoing programs and \$1,145 in memorial and special gifts. Investment income of \$8,895 and rental income of \$6,000 accounted for the balance of WAF revenue.

The WAF Board of Directors awarded a total of \$19,235 in scholarships and grants in 2003-04. These WAF scholarships and grants included \$16,535 for students and programs at the UW-Milwaukee School of Architecture & Urban Planning, including a \$1,000 grant for the UWM Architecture Summer Camp. Other WAF scholarships and grants included \$1,200 in grants to support student chapter programs at four different universities and technical colleges, a \$1,000 tuition scholarship for a Wisconsin architect to attend the national AIA Leadership Institute at Georgetown University and a \$500 grant for a special presentation on new research underway by The Academy of Neuroscience for Architecture. Other WAF expenses included \$2,353 for accounting, administrative, insurance and printing services and \$3,750 for depreciation.

Annual Meeting

The WAF Annual Meeting will be held on May 4, 2005, at the Monona Terrace Community & Convention Center in Madison. The Wisconsin Architects Foundation is governed by a nine-member Board of Directors.

The WAF Board of Directors thanks all of the individuals, firms and organizations who contribute so generously to the success of the Wisconsin Architects Foundation. The accompanying list recognizes WAF contributors in 2003-04. As a 501(c)(3) tax-exempt organization, gifts to the WAF are tax deductible to the full extent allowed by law.

Wisconsin Architects Foundation

321 S. Hamilton St.
Madison, WI 53703-4000
608-257-8477

Thank You!

The Board of Directors of the Wisconsin Architects Foundation is pleased to recognize the following individuals, firms and organizations for their generous support in fiscal year 2003-04.

Regular

Sustaining Members

(\$250 or more)

Berners-Schober Associates, Inc.
Ronald Gene Bowen, FAIA
J.P. Cullen & Sons, Inc.
Brian F. Larson, AIA
James W. Miller, FAIA
William E. Paschke Jr.
Planning Associates
Plunkett Raysich Architects
David and Julia Uihlein
Charitable Foundation
Thomas R. Ward

Contributing Members

(\$100 - \$249)

Barbara A. Babcock
Warren R. Bauer, AIA
Gregg Benz
Bouril Design Studio, LLC
J. Randy Bruce, AIA
Mr. & Mrs. John S. Chapman, AIA
Cherie K. Claussen, AIA
Robert D. Cooper, AIA
Thomas R. Cox, AIA
Gary D. Davis, AIA
William A. Doyle, AIA
Michael Eberle, AIA
Bruno J. Franceschi, AIA
Patricia Frost, AIA
A. James Gersich, AIA
Robert Greenstreet
Mr. & Mrs. Ronald Hansche, AIA
Ralph H. Jackson Jr., AIA
David Kahler, FAIA
Larry H. Kassens, AIA
Douglas Kozel, AIA
David E. Lawson, FAIA
Mary A. Lawson, AIA
Roger E. McMullin, AIA
Joel S. Minkoff, Assoc. AIA
Norman C. Minster, AIA

Allyson D. Nemecek, AIA
Donald J. Richards, AIA
Noble E. Rose, AIA
Larry & Kathy Schnuck, AIA
Sheldon Segel, AIA
Martin Sell, AIA
Roy H. Stark, AIA
Louis Stippich, AIA
Dave Stroik, AIA
Richard C. Thern, AIA
Ver Halen, Incorporated
Michael A. West, AIA
Robert G. Wirth, AIA
Fred Zimmermann, AIA

Donors

(\$31 - \$99)

Christine M. Ahl-Ludwig
Robert J. Arntz, AIA
George Beyer
Douglas J. Blakeslee, AIA
Lawrence E. Bray, AIA
Destree Design Associates
Richard Eschner, AIA
Gregory P. Fischer, AIA
Jerry Germanson, AIA
Paul Grzeszczak, AIA
Gary A. Gust, AIA
John & Martha Horky, AIA
Raimond Juerisson, AIA
Lisa L. Kennedy, AIA
Jack W. Klund, AIA
Richard J. Knothe, AIA
Mark D. Lane, AIA
David A. Lund, AIA
Erik L. Madisen, AIA
Mark J.R. Mattes, AIA
Thomas H. Mudrovich, AIA,
Thomas K. Nisbet, AIA
Fred F. Poethig, AIA
Mark J. Rapant, AIA
Leonard H. Reinke, FAIA
Harry A. Schroeder, AIA
Gerald A. Schwoch, AIA
Carl J. Scott, AIA
David Zach

Members

Anthony F. Balestrieri, AIA
Frank Dropsho, AIA
Kenneth L. Etten, AIA
Michael Gilbertson, AIA
Michael D. Gordon, AIA
Horst W. Lobe, AIA
Garrick R. Maine, AIA
Jay A. McLean, AIA
Miller Masonry & Concrete, Inc.
Roger D. Roslansky, AIA
Robert Byron Smith, AIA
John E. Somerville, AIA
Jerome J. Walkowski, AIA
Eric Wheeler, AIA
Leonard A. Widen, AIA
Gary G. Woodward, AIA
Robert L. Yarbro, AIA
Roger E. Young, AIA
Dick Zeiner

Memorial Contributions

Elmer Johnson Scholarship Fund

Mac Slater, AIA
Leonard A. Widen, AIA
Gary V. Zimmerman, FAIA

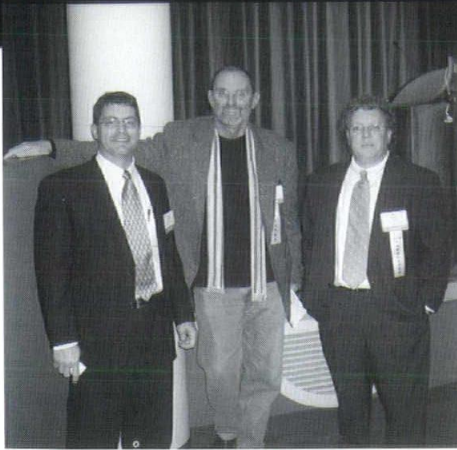
Richard Hunzinger Scholarship Fund

Gary V. Zimmerman, FAIA

Other Memorials*

Barbara A. Babcock
The Durrant Group, Inc.
Thomas L. Eschweiler, AIA
Robin Leenhouts
Horst W. Lobe, AIA
Elayne S. Orr
River Architects Inc.
William P. Wenzler, FAIA
Walter L. Wilson, AIA

* Other Memorial contributions include those made on behalf of the following: Matilda Durrant, Alexander C. Eschweiler Jr., Willis & Lillian Leenhouts, Gordon D. Orr Jr., FAIA, Alonzo Robinson, AIA, George A.D. Schuett, FAIA, Donald Sites, AIA, Joyce Taylor and William B. White, AIA.



The 2004 AIA Wisconsin Convention & Expo, *Institute!*, fired up members' creativity. The program headlined a variety of featured speakers, seminars and special events.

The *Institute!* Convention Committee was chaired by Josh O. Johnson, AIA. Kudos to the entire committee for a great program!

A big "thank you" also is in order for the following Convention sponsors whose generous support made the many special Institute programs possible:

Platinum Sponsors

- CG Schmidt Construction
- Oscar J. Boldt Company
- International Concrete Products
- Lehigh White Cement Company
- Wisconsin Concrete Masonry Association
- Wood-Lam, Inc.

Gold Sponsors

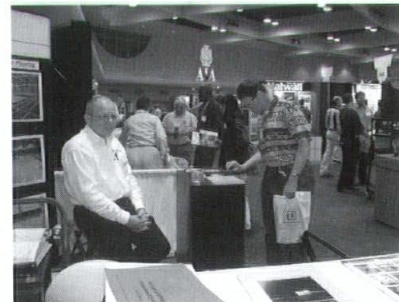
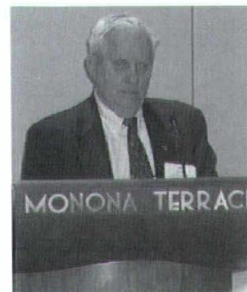
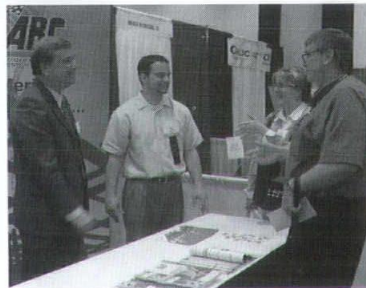
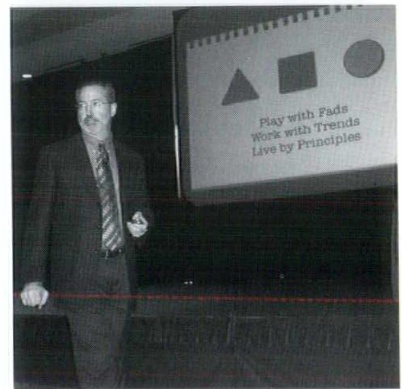
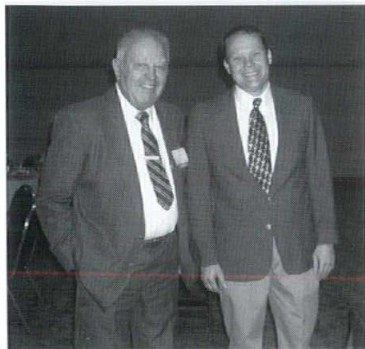
- Arnold & O'Sheridan, Inc.
- Bachmann Construction Company
- Energy Center of Wisconsin
- Holmes Murphy & Associates
- IIDA Wisconsin Chapter
- Ken Saiki Design, Inc.

Silver Sponsors

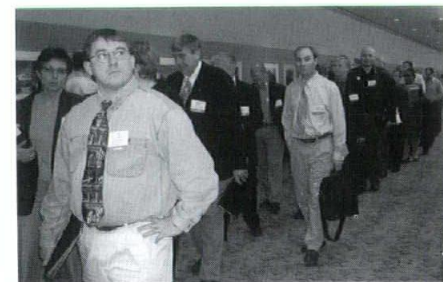
- Huber Engineered Woods
- International Masonry Institute
- Taylor Technologies
- Terrazzo & Marble Supply
- Wisconsin Architects Foundation

Bronze Sponsors

- AIA Contract Documents
- LaFarge North America
- Spancrete Industries, Inc.
- Wisconsin Architect Magazine



The 2005 AIA Wisconsin Convention & Expo is on May 4 & 5. Preview the agenda at www.aia.org.



Congratulations 2004 Building Products Expo Booth Award Winners!

Congratulations to all of the participants in the 2004 Building Products Expo! Over 150 exhibits were on display for architects and building and construction professionals during the 2004 AIA Wisconsin Convention & Expo.

The booth awards jury, made up of AIA Wisconsin and Convention Committee members, selected the award-winning booths based on knowledgeable personnel, booth originality, incorporation of the Convention theme and conformity to the rules and regulations of exhibiting.

The winners are:

First Place

International Masonry Institute

Second Place

Wisconsin Concrete Masonry Association

Third Place

National Survey & Engineering

Honorable Mention

Alpine Plywood

Blueprints Inc.

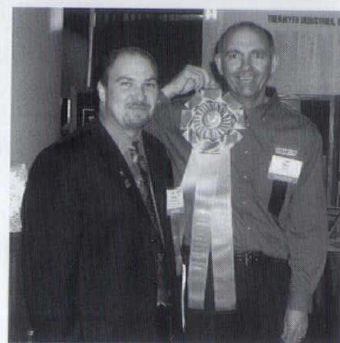
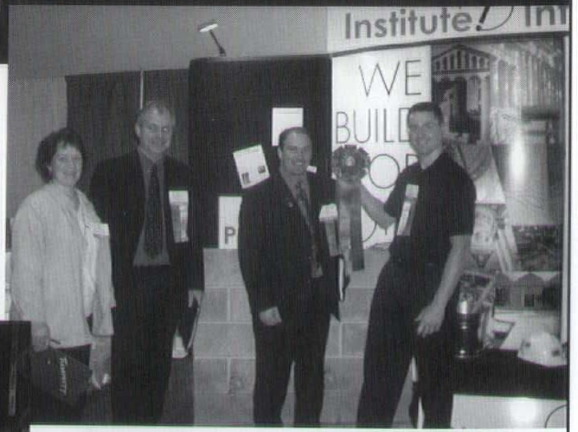
Carley Wood/Custom Metals

Jaeckle Wholesale

Spancrete Industries

Thomas Steele

Trentwyth



To find out more about the Building Products Expo Booth Awards, at the 2005 Expo on May 4 & 5 or how to become a distinguished juror, log onto www.aiaw.org or call AIA Wisconsin at (608) 257-8477.

2005 GOLDEN AWARD

Lisa L. Kennedy, AIA, Whitefish Bay, has been selected to receive the 2005 Golden Award.

The Golden Award is the highest honor AIA Wisconsin can bestow on one of its members. Its purpose is to recognize individual architects who have performed most distinguished leadership and service over an extended period of time, advanced the profession of architecture and provided inspiration to their fellow practitioners.

The AIA Wisconsin Board of Directors unanimously approved presenting the Golden Award to Kennedy at its December meeting in Milwaukee. The nomination highlighted Kennedy's significant contributions to the AIA at the local, state and national levels, her service to the profession of architecture as a leader of the Architect Section of Wisconsin's Joint Examining Board and the inspiration she has provided as the first Student Representative, Associate Representative and women President of AIA Wisconsin.

The Golden Award will be formally presented to Kennedy on May 4 at the 2005 AIA Wisconsin Convention & Expo at Monona Terrace.

The 2005 Golden Award announcement was made by 2004 AIA Wisconsin President Michael P. Eberle, AIA, Middleton, at the annual Board of Directors luncheon with Past Presidents, Fellows and WAF Trustees. Eberle noted that Kennedy's record of service and leadership epitomizes the purpose for which the Golden Award was established.

Kennedy chaired the national 2004 AIA Convention in Chicago and represented members in the North Central Region on the national AIA Board of Directors from 2001 through 2003. During her tenure, she served on the AIA Government Affairs Advisory Committee and as chair of the Institute Honors for Collaborative Achievement Awards jury. Kennedy served as President of the Wisconsin Society of Architects in 1994, having previously served as President of the Southeast Chapter. In 1990, she received an Outstanding Young Alumni Award from the University of Wisconsin - Milwaukee. Professionally, after starting and operating her own firm for a dozen years, Kennedy now serves as the director of design and construction for BF Companies, Inc.

The AIA Wisconsin Golden Award was first presented in 1986. Previous Golden Award recipients include: David E. Lawson, FAIA; Paul H. Graven, FAIA; Mark A. Pfaller, FAIA; Wayne E. Spangler, FAIA; Leonard H. Reinke, FAIA; Nathaniel W. Sample, FAIA; Harry A. Schroeder, AIA; John P. Jacoby, FAIA; Noble E. Rose, AIA; Douglas H. Smith, AIA; Gary V. Zimmerman, FAIA; James W. Miller, FAIA; George A.D. Schuett, FAIA; Roger D. Roslansky, AIA; Frederick E. Zimmermann, AIA; Horst W. Lobe, AIA; and Robert D. Cooper, AIA. Kennedy is the eighteenth architect to receive the Golden Award.

PARADIGM

An outstanding program of speakers and special events has been developed for the 2005 AIA Wisconsin Convention & Expo on May 4 & 5 at Monona Terrace in Madison. Please reserve the dates and plan to attend **Paradigm | A Framework of Thought**.

This year's Convention keynote presentations will feature Cameron Sinclair, the founder of Architecture for Humanity, and John Eberhard, FAIA, executive director of the Academy of Neuroscience for Architecture.

Professional development seminars will focus on emerging design, practice, technology and environmental issues. They include some of the top-rated seminars from last year's national AIA Convention in Chicago.

The design seminars will feature presentations by award-winning architects John Patkau, AIA, Vancouver; Brian MacKay-Lyons, Hon. FAIA, Halifax; and Wisconsin's own James Vander Heiden, AIA, and James Shields, AIA, with HGA.

On practice-related topics, Cliff Brewis with McGraw-Hill will present his economic outlook, Ava Abramowitz, Hon. AIA, will talk about negotiating fees and John Peter Barie, AIA, will address profitable project management.

If that isn't enough, the environment/technology seminars include Wisconsin architects and contractors sharing the lessons they learned on three award-winning sustainable projects, a session by Michael Chambers, FAIA, on specifications for designers and a presentation by Larry Schneider, AIA, on accessible design.

Special events include the presentation of 2005 AIA Wisconsin Design Awards and the Golden Award. You also will want to attend the popular Construction Industry Reception and WCMA Awards Breakfast.

The Building Products Expo will feature displays of the latest products and services available to Wisconsin's design and construction industry. Exhibitors also will be presenting valuable educational programs on new technology and research.

"This year's Convention & Expo is designed to revitalize our quest for creativity and excellence," according to Convention chair David Oberbeck, AIA, Wausau. Watch your inbox and mail for 2005 AIA Wisconsin Convention & Expo program information and registration materials.

DISTINGUISHED SERVICE

The AIA Wisconsin Board of Directors has presented **A. James Gersich, AIA**, Fitchburg, with a *Citation for Distinguished Service* to the profession of architecture. This Citation recognized his leadership and vision as a Director on the national AIA Board of Directors.

Gersich completed his three-year term representing AIA members in Wisconsin, Minnesota, North Dakota and South Dakota in December. The AIA Board of Directors subsequently appointed him to the National Ethics Council.

LEGISLATIVE AGENDA

At its January meeting in Madison, the AIA Wisconsin Board of Directors approved a new and updated "Legislative Agenda" for the current 2005-06 session of the Wisconsin Legislature.

The agenda outlines AIA Wisconsin's positions on a number of issues that may be addressed during the two-year legislative session. For example, it outlines the profession's opposition to proposals that would expand the state sales tax to architectural and other business services to help balance the state budget. It also outlines AIA Wisconsin's support for legislative proposals that would provide adequate funding for the state building program and preservation of the State Capitol, insure architect involvement in the building code development process, exempt materials used in the construction of public projects from sales tax and allow continuing education requirements for license renewal.

Wisconsin Senator Scott Fitzgerald (R-Juneau) presented an overview of key legislative issues for members of the AIA Wisconsin Board of Directors. These issues include balancing the state budget without raiding other state funds, preventing election fraud and passing a property tax freeze. Sen. Fitzgerald is the co-chair of the Joint Committee on Finance.

STATE AWARDS

At a recent State Building Commission meeting, Governor Doyle presented the state's 2004 Design & Construction Awards to recognize excellence in design and construction in the state building program. Two AIA member-owned firms received awards.

KEE Architecture, Madison, was recognized for excellence in architectural design for its work on the Pioneer Student and Technology Center at UW-Platteville. Berners-Schober Associates, Green Bay, was recognized for excellence in sustainable design and construction for its work on the Northeast Region Headquarters for the Department of Natural Resources, which is a new award for the state's annual awards program.

PEOPLE & PLACES

Thomas J. Kloiber, AIA, Kimberly, has been granted Emeritus membership in The American Institute of Architects. Congratulations!

The Milwaukee County Historical Society was awarded an inaugural \$6,397 *Save Our History* grant by The History Channel and Time Warner Cable in order to partner with Milwaukee Public School District's Arts@Large program to

help students explore Milwaukee history. The students in the Arts@Large program will work with AIA Southeast Wisconsin members to create scale Lego models of Milwaukee County landmarks they have visited and researched.

Vetter Denk Architects received a Project Honor Award in the category of Mixed-Use and Commercial for the design of the Beerline Neighborhood. The award is part of the Waterfront Center's "2004 Excellence on the Waterfront" competition, an annual program that receives assistance from the National Endowment for the Arts.

Plunkett Raysich Architects, LLP, has been recognized for its work on the City Center West in Madison. The awards include The Office Building of the Year "TOBY" Award from Building Owners & Managers Association (BOMA) of Wisconsin and an Excellence in Partnering Award, with Tri-North Builders, Inc., from the Associated General Contractors. PRA also received the Residential Award of Merit for the Gibraltar Town Homes in Fish Creek and the Religious Award of Merit for St. Mary's Catholic Faith Church in Hales Corners from the Association of Licensed Architects.

Mead & Hunt was ranked 22nd in the nation on The Zweig Letter 2004 Hot Firm List.

AG Architecture was honored in *The Design for Aging Review* for their Newcastle Place project in Mequon. The project was recognized for its contribution to cutting-edge design for the aging population with sensitivity to the surrounding community. The publication highlights over 40 projects that were part of a 2003 competition for assisted living, continuing care retirement communities and nursing home projects. The AIA, Design for Aging Center and the American Association of Homes and Services for the Aging collaborated to release the publication.

American School & University's *2004 Architectural Portfolio* includes the new Marquette University School of Dentistry in Milwaukee by Kahler Slater Architects. This annual publication honors educational design excellence and features new building projects from across the country.

Milwaukee Magazine and MRA – The Management Association have named Kahler Slater as one of the best medium-sized companies to work for in Southeast Wisconsin. This is the second year in a row the firm has made the list.

"Sustainability in the Built Environment" is an exhibition that examines projects by Wisconsin architects that address important questions about preservation and the relationships between new and old architecture. In each project, an older building had to be renovated, restored or added to in a respectful manner. Connecting the past and the future through creative design highlights the difficulties and rewards involved in the preservation and re-use of older buildings. The exhibition called "Architecture: Past Tense, Future Perfect" features the UW Law School Addition, BWZ Architects,

Ten Chimneys Restoration and Education Center, Engberg Anderson Design Partnership, Wisconsin State Capitol Restoration, by Kahler Slater Architects, and TKWA Studio – Re-use of Abandoned Power Plant, The Kubala Washatko Architects.

The following AIA Wisconsin members have earned LEED 2.0 Accredited Professional status from the U.S. Green Building Council (USGBC): **Mark R. Ernst, AIA**, Grafton, and **Karl E. Hokanson, AIA**, Port Washington.

Fred A. Klancnik, Assoc. AIA, Madison, will serve as a member of the National Advisory Council on the 2005 American Society of Civil Engineers' (ASCE) Report Card for America's Infrastructure.

Daniel G. Beyer, Assoc. AIA, Milwaukee, has joined Continuum Architects + Planners S.C.

Virge J. Temme, AIA, Sturgeon Bay, has been appointed to the Sturgeon Bay Historic Preservation Commission.

Eppstein Uhen Architects Inc. has promoted **Joseph M. Lee, AIA**, Wauwatosa, and **Brett D. West, AIA**, Milwaukee, to design associates and hired **Jesus Sandoval, Assoc. AIA**, West Allis.

Forty years after its introduction as an industry-wide format for organizing construction information, the 2004 edition of MasterFormat has undergone the largest transformation in its history. For more information, go to www.csinet.org/masterformat.

Thomas E. List, AIA, Cottage Grove, and **David M. Hoffman, AIA**, Madison, have joined Plunkett Raysich Architects, LLP, as project architects.

Anne Biebel, Assoc. AIA, Madison, has been selected as a member of the Alaska State Capitol competition jury. She is one of two non-Alaskan jurors.

Professional Affiliate member **Wendy Bettermann** announced that Holmes Murphy & Associates has opened a Madison office at 10 E. Doty St, Ste 800. The phone number is (800) 527-9049.

Recipients of the International Masonry Institute 2004 Wisconsin Golden Trowel Awards include: St. Mary's Catholic Faith Church, Plunkett Raysich Architects, LLP; Shorewood Public Library, Engberg Anderson Design Partnership; West Allis Fire Station No. 1, Plunkett Raysich Architects, LLP; J.H. Findorff & Son Inc. Corporate Headquarters, Potter Lawson, Inc.; Bahr Residence, Architecture CSG; Marquette University Portals, The Kubala Washatko Architects; Southwest Library Expansion & Renovation, The Durrant Group Inc.; Joannes Sk8 Park, Schreiber Anderson Associates; First English Lutheran Church Additions & Renovation, Miller, Wagner, Coen, McMahon; UW Madison Engineering

Center Terrazzo Floor, Kohn Pedersen Fox and Flad & Associates; and Mount Mary College, The Zimmerman Design Group. The Awards were presented at the 2004 AIA Wisconsin Fall Workshop at the American Club in Kohler.

JOSEPH H. FLAD, FAIA

Joseph Hilar Flad, FAIA, Madison, a past president of the Wisconsin Society of Architects died on December 26, 2004, at age 82.

"Joe took what a was a medium-sized family firm and turned it into a major national firm," said James Miller, FAIA, who started working at Madison-based Flad & Associates in 1964 and later served as the firm's president. "What he did in the 60s and 70s is a dramatic part of what the firm is doing today."

A lifelong resident, Flad returned to Madison after WWII to attend the University of Wisconsin, where he earned a degree in business administration. He then studied architecture at Iowa State University and became a registered architect in Wisconsin in 1950. Flad spent his entire career at the architecture firm founded by his father, John J. Flad. Though Joe Flad design some buildings in the Madison area, he ended up relying just as much on his business degree in professional life.

"Joe saw himself as someone who could pull together the right team, which would include the right designers," said Ralph Jackson, AIA, whom Flad hired in 1962 and who later became the firm's president.

Colleagues remember Flad as an outstanding cultivator of people. Outside the firm, this gregariousness won over clients. Within the firm, he engendered a sense that architects were free to work without someone constantly looking over their shoulder.

"One thing I was grateful for was his willingness to delegate large projects to young architects," said Jay McLean, AIA, who joined the firm in 1960. "That's something that was much appreciated."

In 1958, Flad became the president of the Wisconsin Society of Architects and served for two years. As president, he helped kick off an initiative to establish a school of architecture in Wisconsin.

In 1969, Flad was advanced to the College of Fellows. Flad also was an outstanding community leader. He served on the boards of numerous civic, philanthropic and business associations.

"He recognized talent, and he put a great deal of trust and confidence in his employees to do their work," Miller said.

DONALD W. McMASTERS, AIA

AIA Wisconsin is saddened to report the death of Donald W. McMasters, AIA, Delavan. He was a member since 1985.

ROGER E. McMULLIN, AIA

Roger Eugene McMullin, AIA, Madison, died July 1, 2004 at age 88. He was born in Sparta, Wisconsin and graduated from the University of Illinois School of Architecture in 1941. He worked for the Army Corps of Engineers and then joined the U.S. Army. He became a Master Sergeant and served in Okinawa and Korea.

After WWII, McMullin began his architectural career with Boyum, Schubert & Sorenson in LaCrosse. He and his wife moved to Madison in 1948 where he joined Weiler and Strang. He spent his entire career with the firm, eventually serving as president from 1972 until his retirement in 1984. He was involved in the design and development of many buildings throughout Wisconsin. Upon retirement, he became an accomplished watercolor artist. Active in many organizations, he was an Emeritus member who joined the AIA in 1949 as a Junior Associate.

JOHN E. SOMERVILLE, AIA

John E. Sommerville, AIA, Green Bay, passed away October 2, 2004, at age 93. He was born in Marinette and graduated from the University of Illinois-Champaign Urbana in 1933, receiving a degree in architectural engineering. He was employed by several defense companies during WWII and returned to Green Bay after the war.

Sommerville worked for a local architectural firm before starting his own practice in 1946. He ran the firm until his retirement in the early 1970s. His firm was responsible for the design of many area landmarks.

In 1994, he was recognized by then Governor Tommy Thompson for his outstanding service as a member of the Wisconsin Main Street Council. An active community member, he served on the boards of several organizations. He joined the AIA in 1947.

Continuing Education Program Announcements



View a calendar at
www.aiaw.org



Architects Read Wisconsin Architect

Rate Card available at www.aiaw.org

PARADIGM | A Framework of Thought



2005 AIA Wisconsin
Convention & Expo
May 4 & 5, 2005
Monona Terrace, Madison, WI
www.aiaw.org



AIA Wisconsin
is a full-service distributor of
AIA Contract Documents.
(608) 257-8477



Your Ad Here

Rate Card available at
www.aiaw.org

CONSULTING ENGINEERS


MILWAUKEE
414.351.6668

BURLINGTON · WITTENBERG
262.767.2747 715.253.3663

www.kapurengineers.com

- Stormwater Management
- Construction Management
- Civil/Site Work
- Electrical
- Materials Testing

got ces?
we do.



View a calendar at www.aiaw.org




SILVER™
Edge

Software Solutions for the Project Based Service Firm

www.silveredge.com
(800) 438-6860

Wind2 FMS & Award! CRM

Business Partnering for Life Enrichment



Skot Weidemann
Photography

Architecture, Aerial & Advertising

6621 Century Ave. Ste. 2, Middleton, WI 53562
P: 608/836.5744 F: 608/836.7121 www.weidemannphoto.com

MACKESEY AND ASSOCIATES, LLC

101 Nob Hill Road, Suite 100
Phone: 608-270-1178

Madison, Wisconsin 53713
Facsimile 608-270-1192

SPECIALIZING IN THE DESIGN OF QUALITY FOODSERVICE AND LAUNDRY FACILITIES

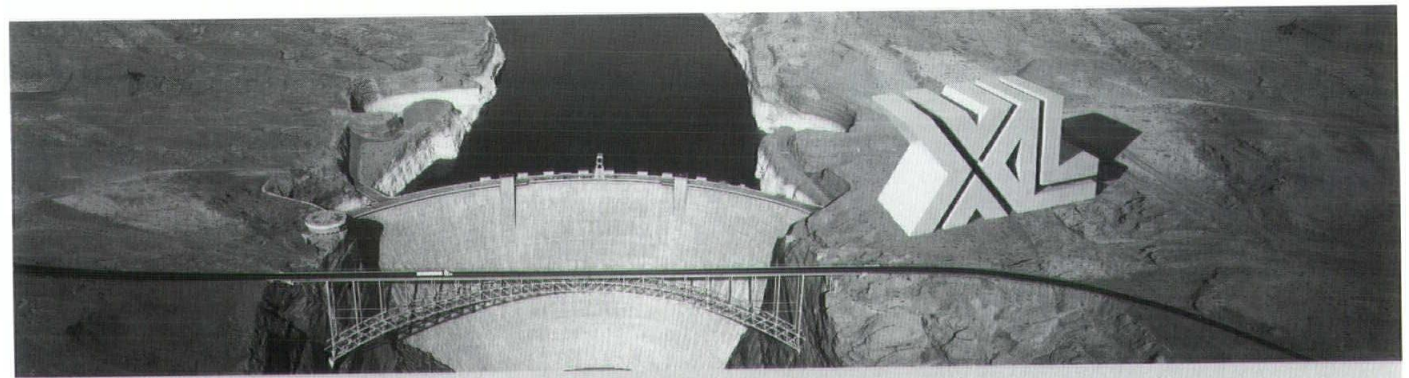
1 9 5 3

WAF

2 0 0 3

Wisconsin Architects Foundation
Building a better Wisconsin through architectural education.

Send your contributions to:
WAF
321 S. Hamilton St.
Madison, WI 53703



The strength and expertise to cover your professional liability risks.

INTRODUCING XL DESIGN PROFESSIONAL

XL and DPIC, recognized leaders in risk management solutions for the design industry, have combined their expertise to form XL Design Professional, dedicated exclusively to providing professional liability insurance, risk management products and services to the design and engineering industries.

The XL Design Professional program provides professional liability insurance solutions backed by the financial strength and stability of XL America insurance companies, rated:

- A+ (Superior) by A.M. Best
- AA- (Very Strong) by S&P
- Aa3 (Excellent) by Moody's

For more information about our industry-leading resources including education, risk management, claims handling and dispute resolution services, go to www.xldp.com or contact your XL Design Professional specialist and independent agent:



HOLMES MURPHY

PAULA DIXON
5006 N. Glen Park Place
Peoria, IL 61614
Tel: 309-683-1065
Toll Free: 800-527-9049
Fax: 309-683-1075
www.holmesmurphy.com

XL Design Professional is a division of XL Specialty Insurance Company. Coverages are underwritten by Greenwich Insurance Company, Indian Harbor Insurance Company and XL Specialty Insurance Company.

