

Architecture



emp, Bunch & Jackson



Herbert Voelcker &
Associates



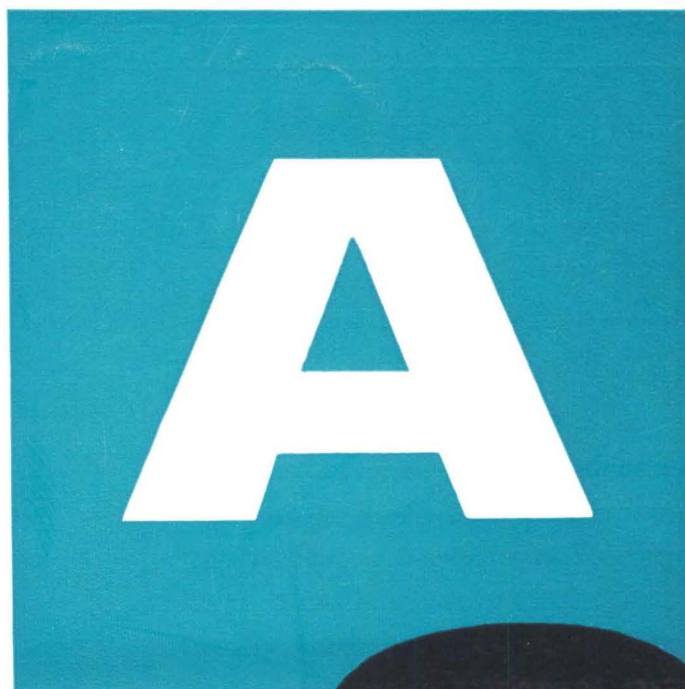
Augustus C. Constantine



Jay T. Liddle, Jr.



Alan McCullough



architectural south

A KEY PUBLICATION



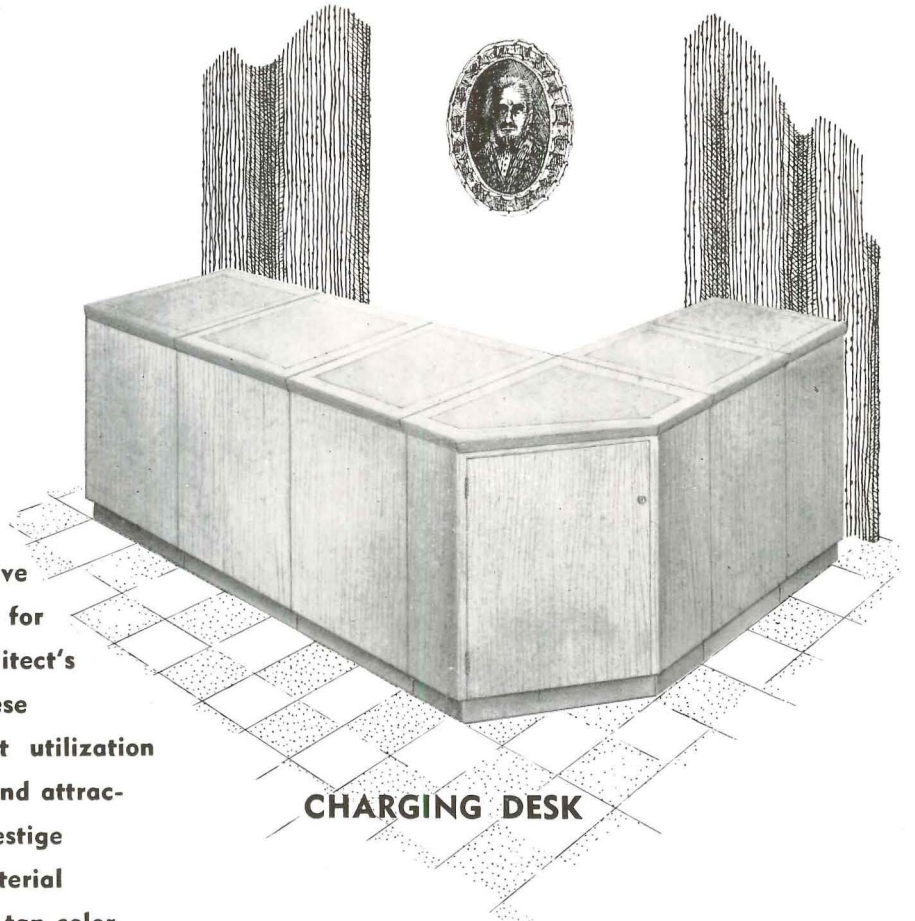
INDEPENDENT
LIFE BUILDING
JACKSONVILLE, FLA.

SEPTEMBER

1956










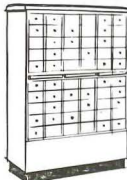




Library Furniture

Southern Desk Company's extensive design and planning facilities are for the purpose of making the architect's job easier. The knowledge of these departments makes the greatest utilization of space, convenience of layout and attractiveness of appearance. The Prestige Line is constructed of maple material and finished in our popular sable-tan color.



CHARGING DESK

SHOWN BELOW IS A PARTIAL LIST OF THE COMPREHENSIVE LINE OF SOUTHERN DESK'S LIBRARY FURNITURE. WRITE FOR FREE CATALOG.

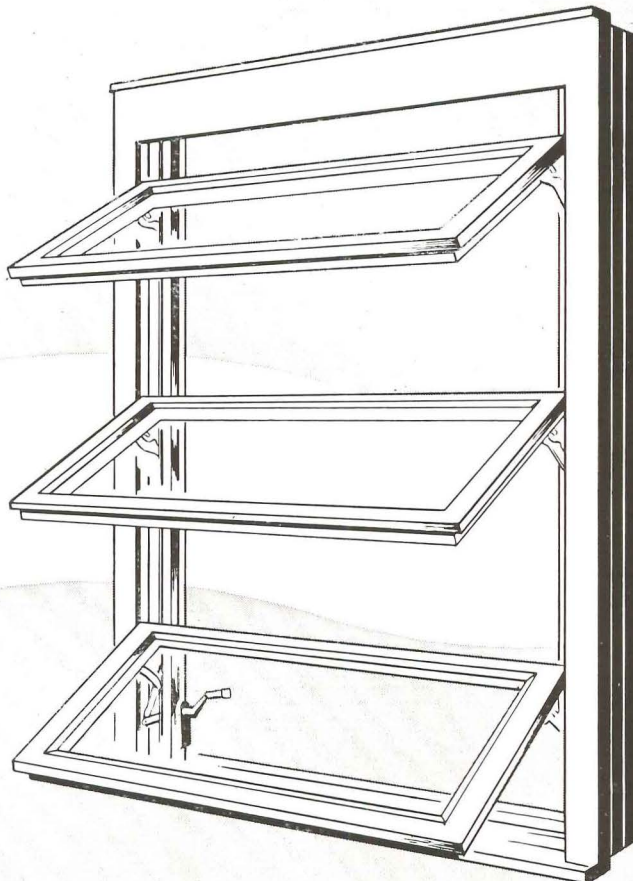
						
CHARGING DESK	LIBRARY TABLE	PEDESTAL TABLE	ROUND TABLE	SLOPING TOP TABLE & BENCH	INDIVIDUAL STUDY TABLE	BOOK TRUCK
						
BOOK SHELVING	SHELVING INSERTS	CATALOG CABINETS	MAGAZINE RACK	LIBRARIANS CHAIR	LIBRARIANS DESK	ATLAS STAND

Design, Manufacture and Installation of Church and Institutional Furniture.



SOUTHERN DESK COMPANY
Design and Consultation HICKORY, NORTH CAROLINA

COMPLETE VENTILATION CONTROL



with **WOODCO**
E-ZEE Loc

the easiest closing awning window ever made!

Quality and beauty are combined to make Woodco the finest performing awning window in the industry. Our exclusive VentAir night ventilation window opens to 10° to permit gentle air movement in the room while upper sash remains securely locked. Precision-balanced hardware is so engineered that no adjustments are ever required. Double vinyl weatherstripping* assures positive closure. Never sticks, never rattles. When you specify Woodco — you specify the best.

CHECK THESE EXCLUSIVE ADVANTAGES!

- EASY TO LOCK
- SEQUENCE AIR CONTROL
- TOXIC-TREATED TO PREVENT DECAY
- EXTRA HEAVY SASH and FRAME
- DOUBLE VINYL WEATHERSTRIPPING
- WATER-REPELLENT TREATED
- COMPLETELY ASSEMBLED

For full information we refer you to Sweets Catalog or write to

WOODCO CORPORATION

Jacksonville 1, Fla.

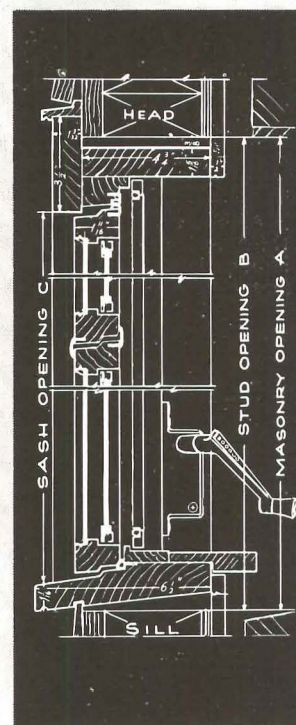
North Bergen, N. J.

Schenectady 3, N. Y.

Lowell, Mass.

Factories:

NORTH BERGEN, N. J. and ROCKWELL of RANDOLPH, Inc., Randolph, Wisc.



W Woodco **Windows** for the Beautiful point-of-view...®

Architectural South

Volume 3

September 1956

Number 5

CONTENTS

Architectural Calendar	4
Office Building	
Kemp, Bunch & Jackson	5
Medical Center	
Herbert Voelcker & Associates	9
Gulf States Region To Meet October 7-8-9	11
Elks Lodge	
Augustus C. Constantine	14
Doctors Office	
Jay T. Liddle, Jr.	16
Office Building	
Alan McCullough	18
Architects In The News	20

Thomas H. Broughton
Publisher

J. C. Davis
Advertising Director

A KEY PUBLICATION

Architectural South is published monthly by Key Publications, Inc., 121 East Third Street, Charlotte, North Carolina. Editorial offices at 1447 Peachtree Street, NE, Atlanta 9, Georgia, Telephone TRinity 4-8694, and 121 East Third Street, Charlotte, North Carolina, Telephone EDison 2-7537.

Advertising Representatives:

New York 17, N. Y.—McClanahan & Company, 295 Madison Avenue, Tel. LExington 2-1234.

Atlanta 9, Ga.—Weaver, Incorporated, 1447 Peachtree Street, N.E. Tel. TRinity 4-8694

Miami 32, Fla.—Weaver, Incorporated, Ray Rickles, 814 C of C Building, Tel. FRanklin 9-1495.

Tyler, Texas—Weaver Incorporated, Dick Warner, P. O. Box 3142, Tel. 3-3948.

Pasadena, Calif.—Joseph W. Conrow & Company, 1175 Woodbury Road. Tel. SYcamore 7-5365.

Address all communications to Architectural South, Box 517, Charlotte, North Carolina. Advertising rates on request.

Opinions expressed by contributors are not necessarily those of the Publisher. Copyright 1956 by Key Publications, Inc. Reproduction of any articles, pictures, or any other material appearing in Architectural South is forbidden without the specific approval of the Publisher.

Subscription price: One year \$3.00; Two years \$5.00. Single copies 25 cents. Full name and address shall accompany all subscriptions. Kindly notify Architectural South in the event of change of address.

ARCHITECTURAL CALENDAR

- Sept. 19-20: Research Conference in Modern Masonry Construction. Conducted by Building Research Institute. United States Chamber of Commerce Building, Washington, D. C.
- Sept. 23-26: American Public Works Association. 1956 Public Works Congress and Equipment Show. Texas Hotel, Fort Worth, Texas.
- Sept. 30-Oct. 14: Atlanta Art Association. Eleventh Annual Southeastern Art Exhibition. Atlanta, Ga.
- Oct. 7-9: Gulf States District, AIA Annual Conference. Chattanooga, Tenn.
- Oct. 11-12: Noise Abatement Symposium. Sponsored by Illinois Institute of Technology. Study of control of noise through architectural design. Hotel Sherman, Chicago, Ill.
- Oct. 15-19: American Society of Civil Engineers. Fall Convention. William Penn Hotel, Pittsburgh, Pa.
- Oct. 19-20: National Trust for Historic Preservation. Annual Meeting. Washington, D. C.
- Oct. 31-Nov. 2: Texas District, AIA. Regional Conference. Corpus Christi, Texas.
- Nov. 8-10: Florida Association of Architects, AIA. Annual Convention. Hotel Seville, Miami Beach, Fla.
- Nov. 12-14: Structural Clay Products Institute. Annual Convention. Boca Raton, Fla.
- Nov. 14-16: Middle Atlantic District, AIA. Regional Council Meeting and Pennsylvania Society of Architects. Hershey, Pa.
- Dec. 9-11: Carolinas Branch, Associated General Contractors of America. Annual Convention. Boca Raton, Fla.
- Jan. 18-19: Associated General Contractors of West Virginia. Annual Convention. Daniel Boone Hotel, Charleston, West Va.

OFFICE BUILDING

JACKSONVILLE, FLA.

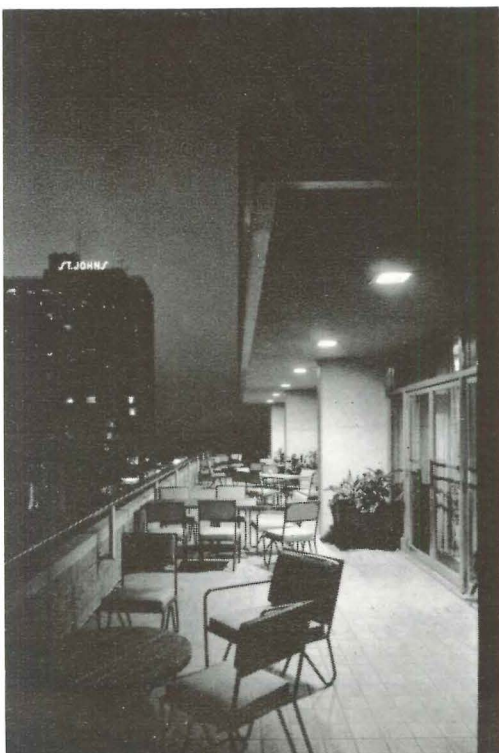
Kemp, Bunch & Jackson

ARCHITECTS



BODDEN FOTOS

ALEXANDRE GEORGES PHOTO



The new Independent Life & Accident Insurance Company building site consists of almost half a city block in the central business district of Jacksonville, Fla., facing on three streets with parking provided directly on the site.

Architects for the building were Kemp, Bunch and Jackson of Jacksonville.

The building rises 240 feet above the sidewalk and is surmounted by an illuminated pylon of stainless steel rising an additional 20 feet to be one of the highest features on Jacksonville's skyline. The building consists of a full basement and 18 stories above the sidewalk. The basement and the first three stories cover a ground area of 16,800 square feet, while the fourth floor sets back approximately nine feet

from all street fronts to provide roof terraces for the executive offices and employees' lounge. The main tower of the building above the fourth floor sets back from both the Duval and Church street sides.

There are 167,000 square feet of floor area in the building, of which the owner uses more than half the tenable space for its own operations, which include printing, mortgage loan, policy, IBM, claims, bookkeeping, auditing, records and files, agents' and executive departments.

The sixth through the fourteenth floors are 100 per cent occupied by tenants, while the fifteenth, sixteenth, and seventeenth stories contain the mechanical equipment for heating and cooling the building, operating and controlling the elevators,



PHOTO BY ALEXANDRE GEORGES



BODDEN FOTOS

providing fire protection, and office space for the building engineer. The topmost floor is constructed as a glazed observation lounge.

The building has a 1,500 ton structural steel frame, assembled with high tension bolts and nuts, instead of the usual method of riveting or welding, resting on 789 concrete and steel pilings driven an average of 37 feet to bedrock. Modular construction enables large open areas to be subdivided on five foot intervals at any time with a minimum of physical change. Cellular steel floor decks, topped with lightweight concrete, provide complete electric power and telephone availability throughout the building—the cells of the sub-floor serving as raceways for the wiring. The windows are designed so that partitions can be joined to the window mullions at regular spaces without change. Air conditioning units are sized so that a minimum of change is necessary when partitions are added.

The structural skeleton of the building is sheathed with buff color natural Indiana limestone, set off by magnesia spot glazed brick spandrels and decorative

panels in ivory-cream color. Aluminum windows are equipped with air condition locks and are only to be opened for washing of the outside of the glass. Windows which face sunny exposures on the East, South, and West are glazed, to reduce air conditioning load and minimize glare. Likewise the roof over the Cafetorium on the fourth floor and all canopy roofs are finished with green color marble chips in order to reduce objectionable reflection into overlooking windows. Extruded aluminum window mullions extend the full height of the tower, accentuating its soaring lines. Aluminum louvers and concrete fins screen the mechanical equipment spaces, while admitting the necessary light and air. At the sidewalk line, highly polished Emerald Pearl granite, imported from Sweden, provides a substantial bulkhead and foil to the stainless steel marquise, letters, entrance doorways, and window trim.

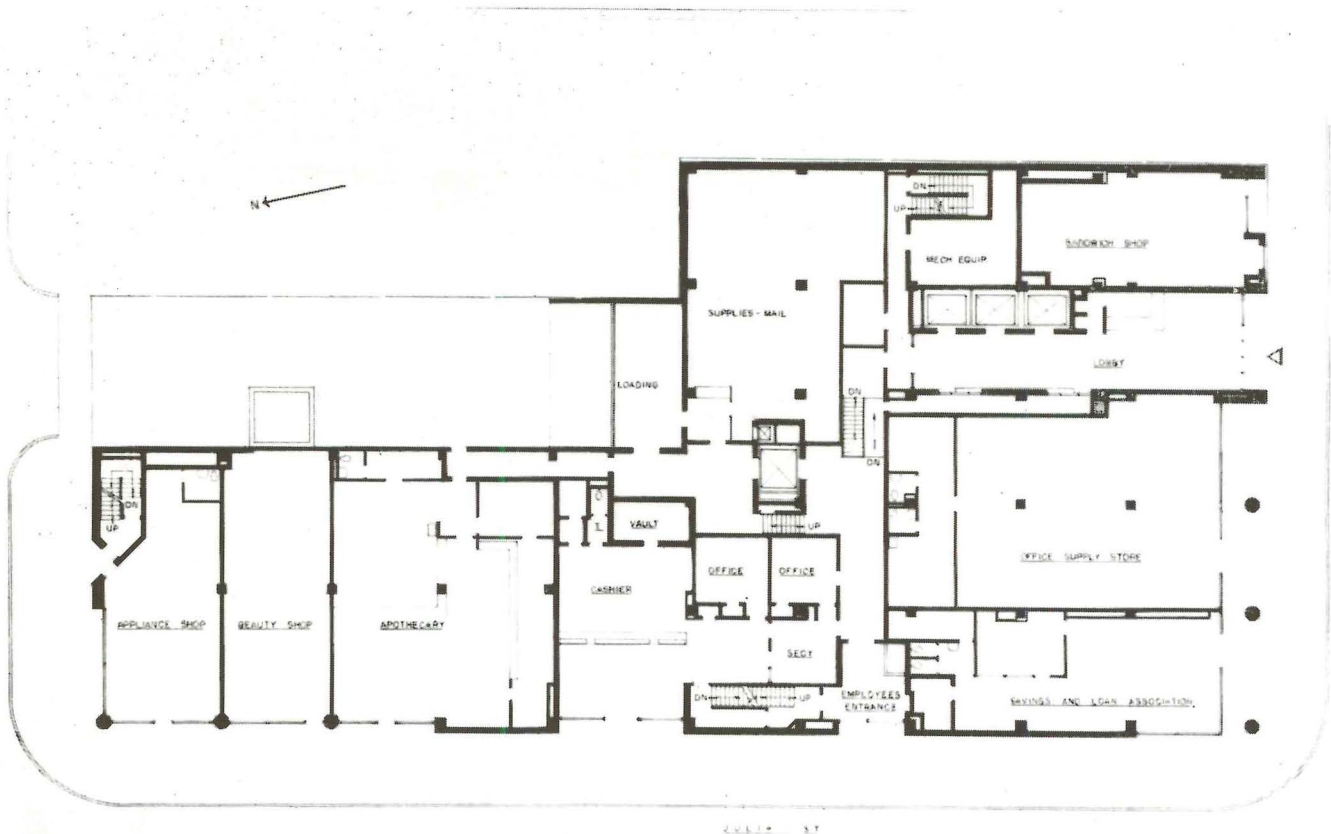
The principal entrance to the building is from West Duval Street into an elevator lobby lined with gleaming Italian Dolcetto Perlato marble. Here an information and vending stand is situated

and acoustically treated public telephone alcoves are provided. Indirect lighting concealed in ceiling coves and behind architectural glass panels render a soft brilliance. Elevator lobbies on the upper floors are finished with the same marble walls and terrazzo flooring. All work spaces are "sound conditioned" by use of incombustible sound absorbent tiles, installed with a unique system of air distribution via perforated metal panels set flush in the ceiling. Some of the walls of the employees' cafeteria, which is also used as an assembly room, are finished with large panels of Phillipine Paldao wood. The reception area of the executive fourth floor, as well as the board room, president's office, and some other offices are panelled with sliced American black walnut. Other executive suites are panelled with Appalachian cherry, Burmese teak, and domestic butternut.

Elevator cabs are finished with blond mahogany laminated in thermoplastic to maintain its original beauty and reduce maintenance. In rooms where wood panelling occurs, the window sills
(Continued on page 21)

BODDEN FOTOS

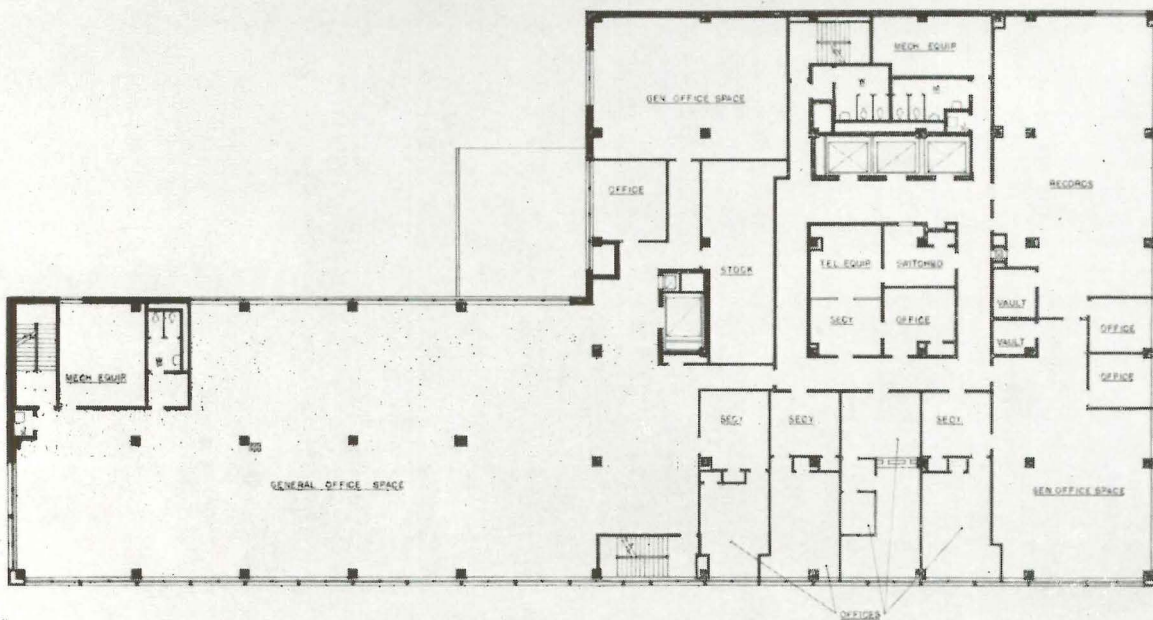




GROUND FLOOR

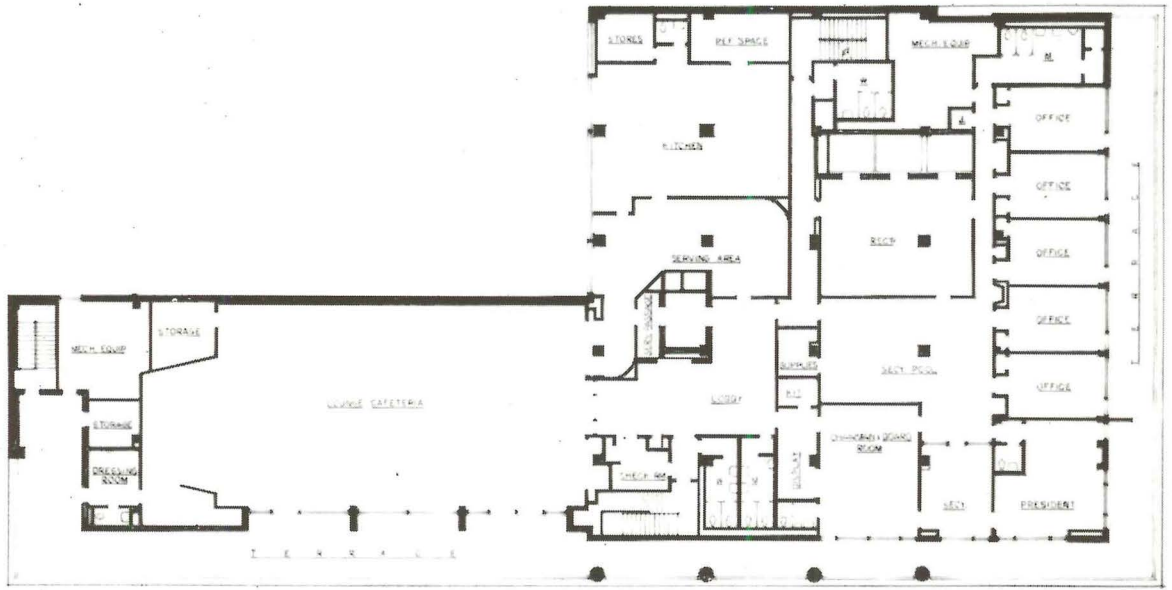


HOME OFFICE BUILDING
 INDEPENDENT LIFE AND ACCIDENT INSURANCE COMPANY
 JACKSONVILLE, FLORIDA
 KEMP BUNCH & JACKSON, ARCHITECTS
 JACKSONVILLE, FLORIDA



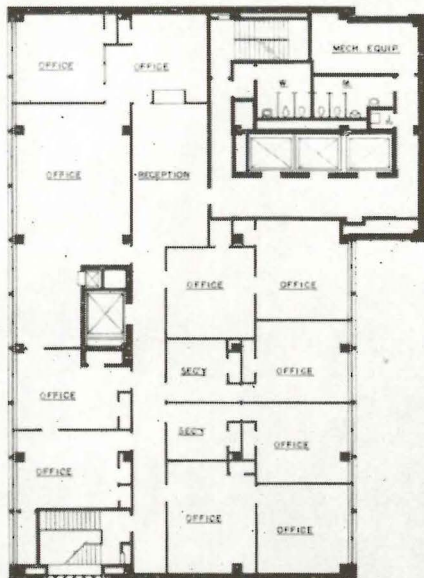
SECOND FLOOR

HOME OFFICE BUILDING
 INDEPENDENT LIFE AND ACCIDENT INSURANCE COMPANY
 JACKSONVILLE, FLORIDA
 KEMP BUNCH & JACKSON, ARCHITECTS
 JACKSONVILLE, FLORIDA

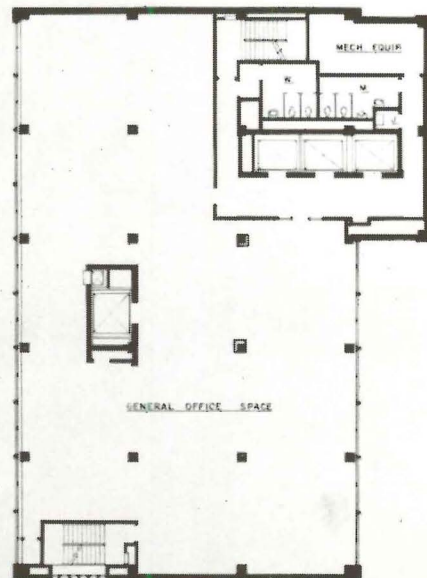


FOURTH FLOOR

HOME OFFICE BUILDING
 INDEPENDENT LIFE AND ACCIDENT INSURANCE COMPANY
 JACKSONVILLE, FLORIDA
 KEMP BUNCH & JACKSON, ARCHITECTS
 JACKSONVILLE, FLORIDA

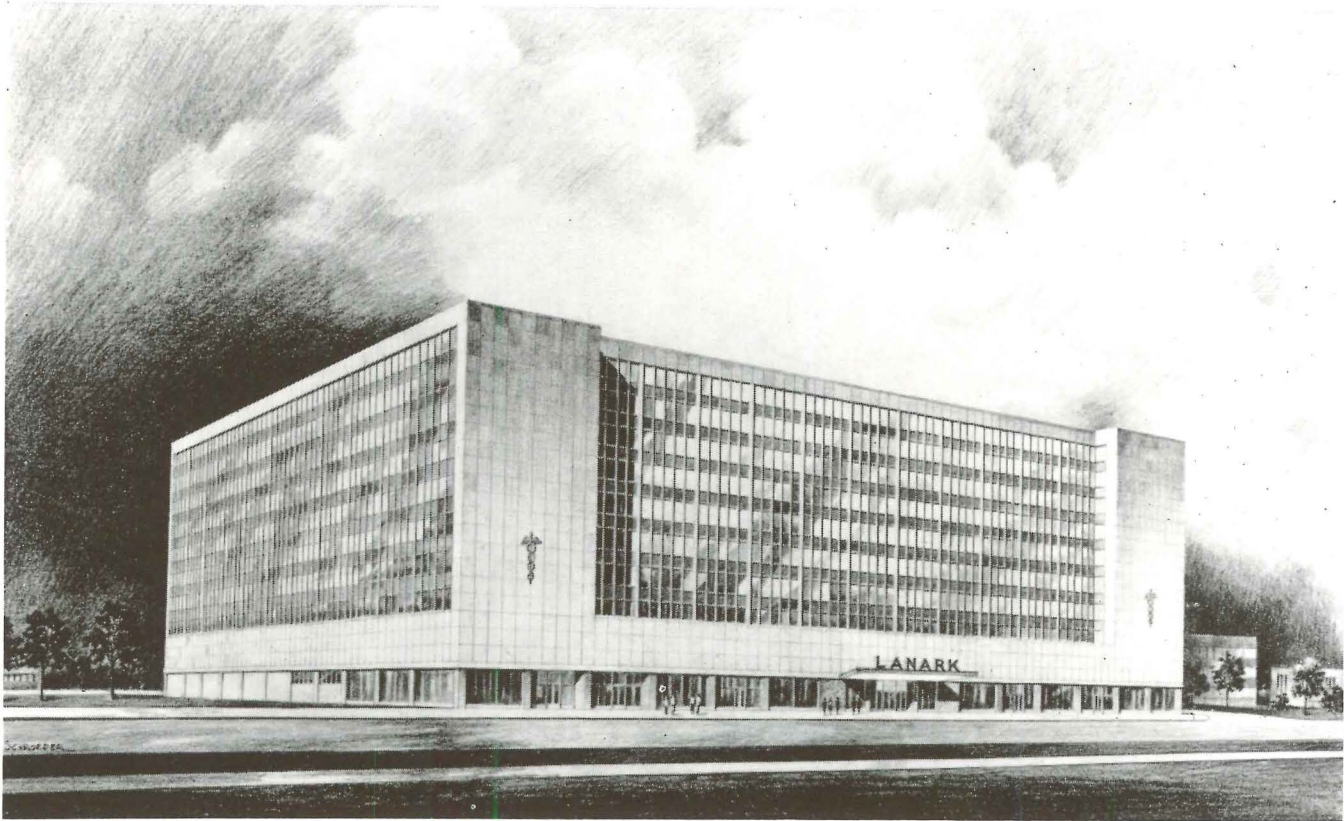


FIFTH FLOOR



TYPICAL FLOOR
 SIXTH THRU FOURTEENTH FLS.

HOME OFFICE BUILDING
 INDEPENDENT LIFE AND ACCIDENT INSURANCE COMPANY
 JACKSONVILLE, FLORIDA
 KEMP BUNCH & JACKSON, ARCHITECTS
 JACKSONVILLE, FLORIDA



MEDICAL CENTER

FORT WORTH, TEXAS

Herbert Voelcker & Associates

ARCHITECTS

HOUSTON, TEXAS

The drastic shortage of hospital bed space, convalescent beds and medical office space in Fort Worth, Texas, will soon be relieved by a medical center in process of development by The Lanark Corporation, an investment company.

Plans for the structure are being designed by Herbert Voelcker and Associates, Houston architects.

Located on a large site conveniently located to main traffic arteries, the ell shaped building will be 10 stories high and has been planned to fit a triangular site. The ground floor accommodates a pharmacy and other medical supply shops. The second floor will provide office space for The Lanark Corporation and kindred insurance and health agencies.

Complete clinic and miscellaneous offices in the third and fourth floor are being assigned to various medical professionals and allied services.

The next four floors are designated for hospital use and will have a maximum of 450 beds. The two top floors are intended for convalescent wards, private rooms and apartments.

The building will have a total of 287,000 square feet of floor space and is estimated to cost approximately \$7,000,000.

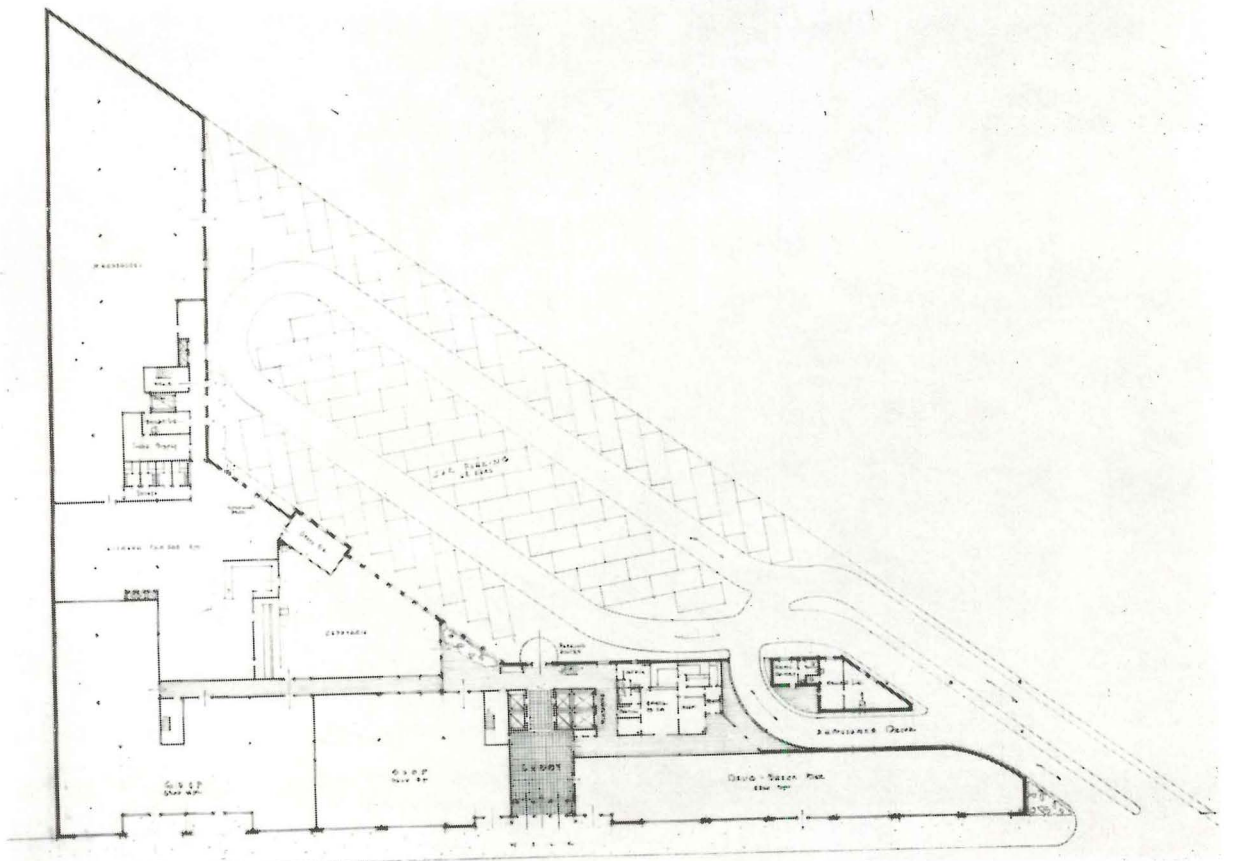
All office and hospital bed space is planned with emphasis on economical arrangement and most efficient service. The entire center is to meet a demand for a cost level of hospital and convalescent service comparable with health and hospitalization

insurance and compensation payments.

The exterior of the building is to be faced with Indiana Limestone. The steel and concrete structure will have columns set back from walls to present an unobstructed window wall effect. Windows, mullions and spandrels are to be of aluminum in appropriate finish and color and heat absorbing glass.

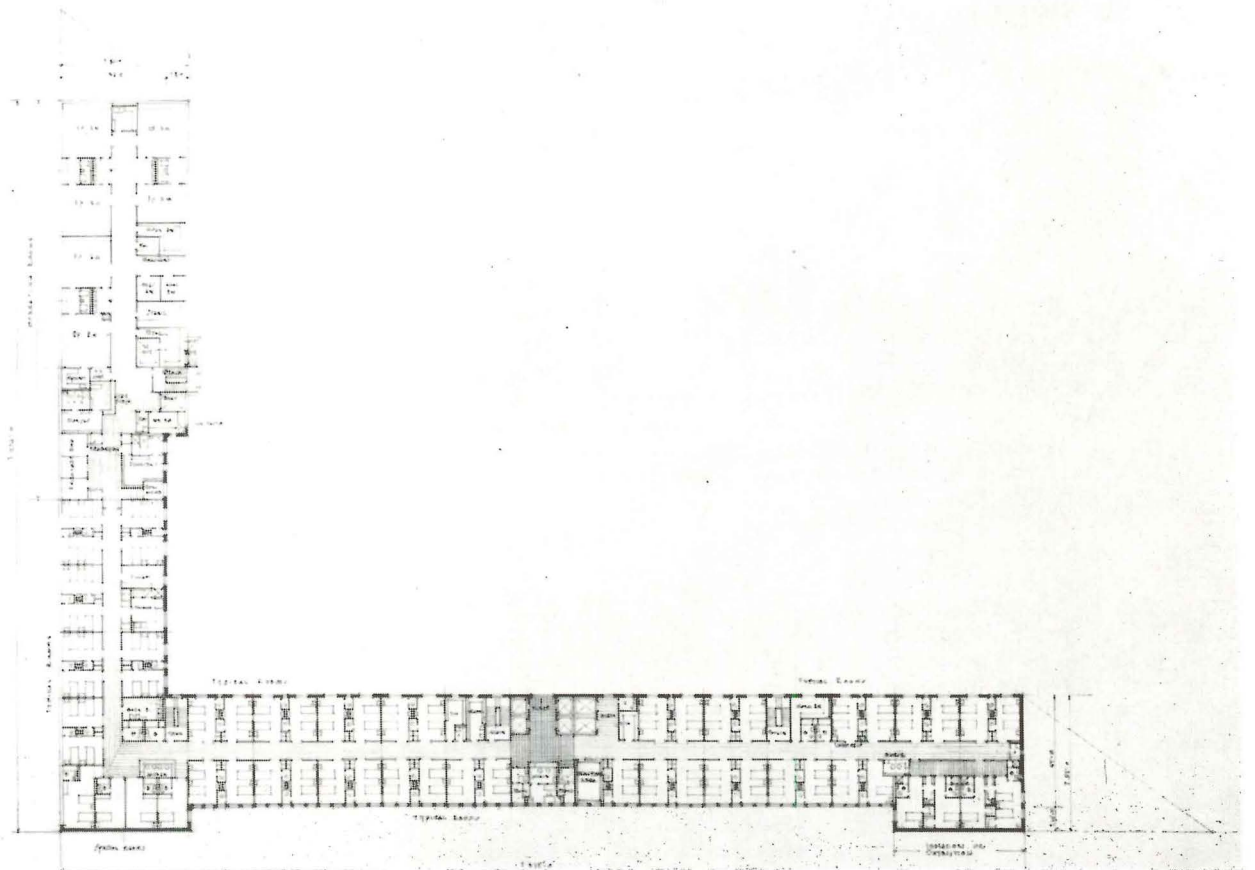
Ambulance service and emergency rooms at the ground level will be given preferential access from the adjoining street. Parking for 68 doctors' cars will be on the ground level with additional space at an upper level parking area.

Associated with the architects are Charles V. Chenault, mechanical engineer, and George Smith, structural engineer.



Ground Floor

Typical Floor



GULF STATES REGION TO MEET OCTOBER 7-8-9

The Seventh Annual Conference of the Gulf States Region of the American Institute of Architects will be held at the Lookout Mountain Hotel, Chattanooga, Tenn., October 7-8-9, according to an announcement by Harry B. Tour of Knoxville, General Chairman for the conference.

"Architecture for the Nuclear Age" will be the conference theme and the impact of nuclear science, electronics, radioisotopes, jet propulsion, automation, plastics and other recent scientific developments on our way of living will be explored in a forecast of the resulting changes in the architecture of the future.

With the theme slanting thinking into the future, the conference will deviate from the usual pattern of speakers and seminars by convening the assembly into separate groups for discussion clinics, with nationally-known moderators stimulating thinking and imagination on the following subjects: "Cities and Homes in the Nuclear Age," "School and Churches in the Nuclear Age," "Hospitals and Public Health in the Nuclear Age," and "Business and Industry in the Nuclear Age."

In addition to Mr. Tour, other members of the conference committee are Selmon T. Franklin, Jr., Co-Chairman; Dean E. Hill, Memphis; Clinton E. Brush, III, Nashville; T. Leland Ashby, Chattanooga; and R. V. Arnold, Bristol.

Committee Chairmen are: Civic Awards, Robert D. Holsaple,

Knoxville; Commercial Exhibits, Tom A. Windrom, Memphis; Entertainment, George E. Palm, Jr., Chattanooga; Finance, William A. Martin, Chattanooga; Honor Awards, Thomas F. Faires, Memphis; Hospitality, Selmon T. Franklin, Sr., Chattanooga; Ladies Entertainment, Gordon L. Smith, Chattanooga; Program, T. Leland Ashby, Chattanooga; Printed Program, Elbridge White, Nashville; Publicity, Frank Gibson, Chattanooga; Registration, Howard J. Butler, Chattanooga; Transportation, James G. Gauntt, Chattanooga.

Registration will begin Sunday afternoon, October 7, and will be followed by a ceremony officially opening the Building Products Exhibition.

At the conference certificates will be presented for honor awards and civic awards. The entrants for the honor awards are registered architects of the Gulf States Region who submit plans and descriptions of buildings they have designed, together with descriptive data of the owner's specific program requirements, including the specific and unusual condition of the site, and technical data on type of construction and material used. The entries will be judged on the basis of the solution of the problem presented and the worthiness of the finished work for an award for excellence in architecture. The first honor awards will be presented for Distinguished Accomplishment in Architecture, and other Awards of Merit in Architecture

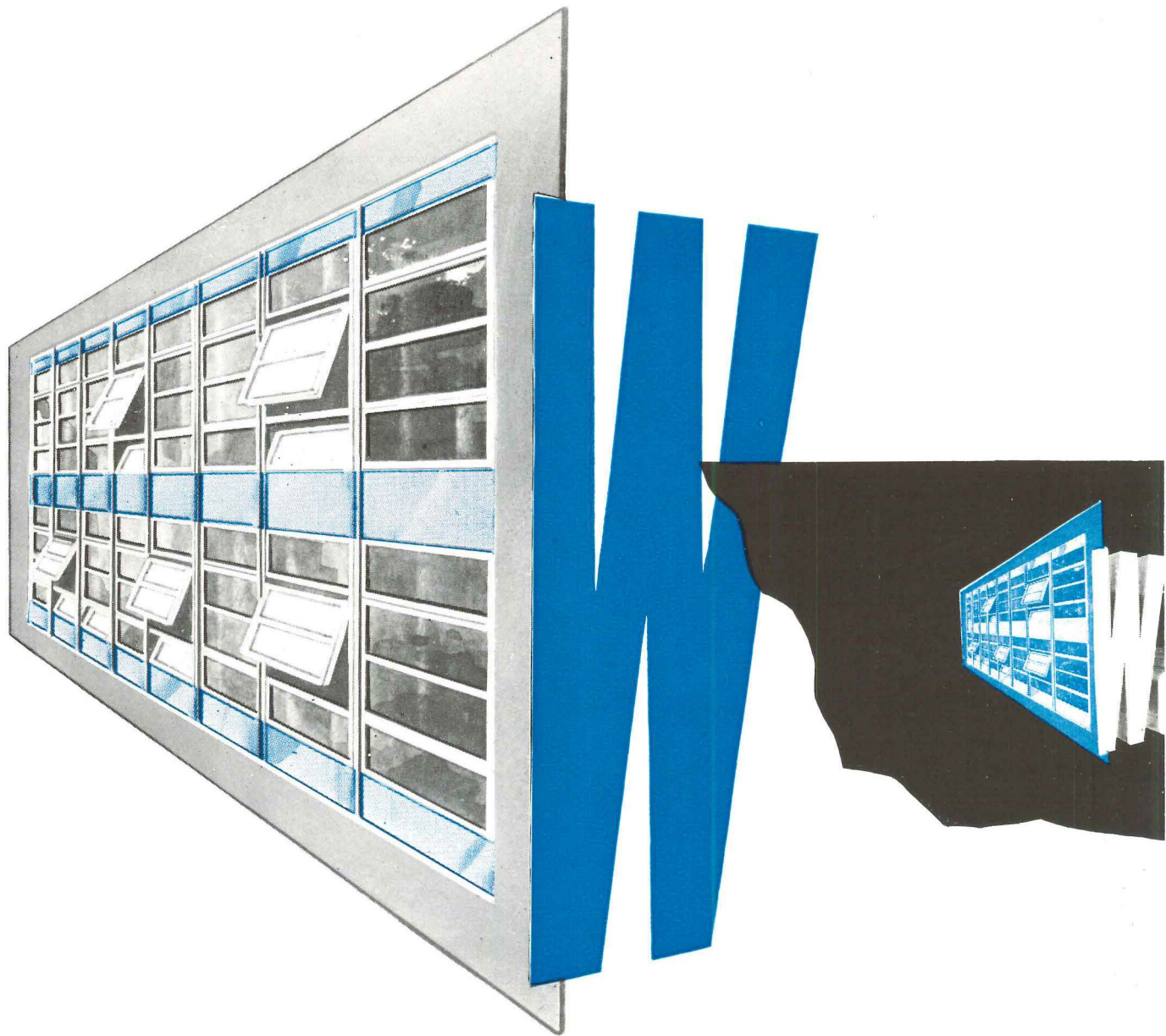
for other deserving exhibits. The entries this year will be in line with the theme of the conference, "Architecture for the Nuclear Age."

This is only the second year that civic awards have been presented. Each chapter in the Gulf States Region will select an architect who has rendered outstanding service to his community as distinguished from outstanding ability in design, and submit his name as a candidate for this award.

The sessions of the meeting will be interspersed with interesting social activities. There will be a cocktail party and buffet supper Sunday evening, Sightseeing tours to Chickamauga Park, historic battle fields and Chickamauga Dam, as well as to Rock City, Point Park and the Incline Railroad on Lookout Mountain.

There will be a patio picnic with mountain music, and the annual banquet will be followed by informal dancing. A special luncheon and fashion show has been planned for the ladies on Tuesday at the Fairyland Club.

The meeting will close Wednesday morning with the final business session, and many of the delegates will enjoy interesting post-convention tours to Oak Ridge and the Atomic Energy Museum, Kingston Steam Plant of TVA, Isotopic Research Hospital of Knoxville, the Great Smokies National Park, and the Arnold Engineering Development Center in Tullahoma, Tennessee.

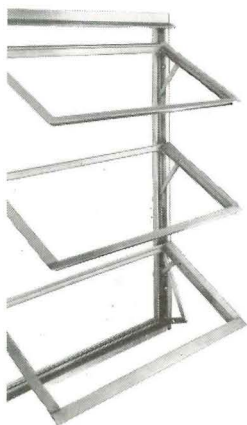
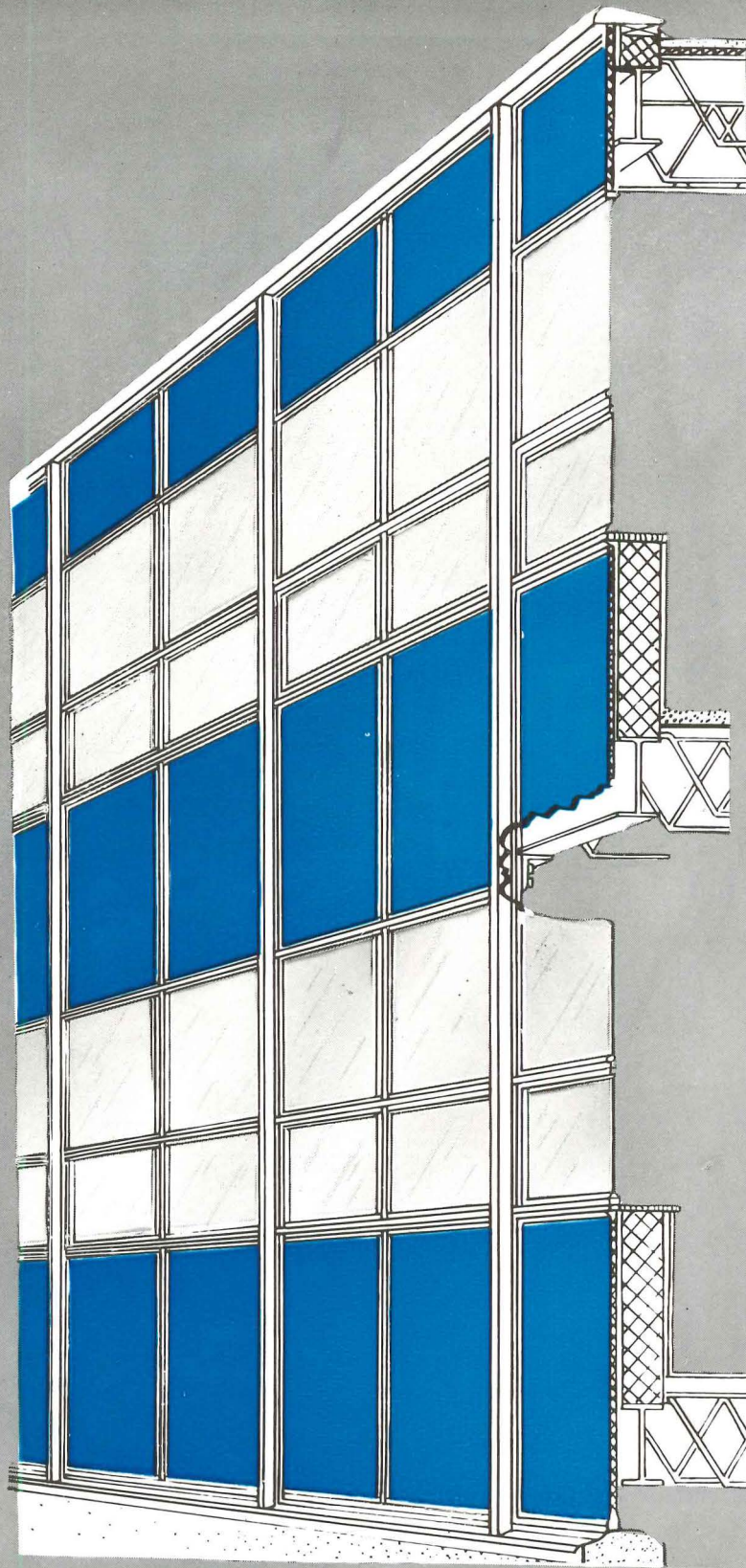


WONDER WALL...

BY MIAMI WINDOW CORPORATION[®]

“a name to be trusted”

A wide range of building types from coast to coast, in every kind of climate, are available for your inspection, to let you see for yourself that WonderWall . . . Miami Window's infinitely adaptable curtain-wall method . . . is as superior to ordinary techniques as is the famous Miami All-Aluminum Awning Window to other "awning-type" windows. When you submit your sketches to Miami Window for engineering recommendations, you can be confident of the results. For this is the firm whose windows are guaranteed in writing . . . whose reputation rests firmly upon the industry's most widespread acceptance . . . whose products stand proudly in the ranks of recognized national brands.



**THE MIAMI ALL-ALUMINUM
AWNING WINDOW . . . the
original window of its
type . . . the only window
that is guaranteed in
writing**

IT'S NOT A MIAMI WINDOW[®]
UNLESS IT'S MADE BY



THE FIRST
ALL-ALUMINUM
AWNING WINDOW

Window
CORPORATION[®]

P. O. Box 877, International Airport Branch, Miami 48, Florida



ELKS LODGE

CHARLESTON, S. C.

Augustus C. Constantine

ARCHITECT

Construction will begin in the near future on a new Elks Lodge for Charleston, S. C., which was designed by Augustus C. Constantine, Charleston architect.

The architect, in developing his design, was faced with the problem of designing a functional building within an established budget which would meet the needs of the lodge for a smooth and satisfactory operation of its lodge functions for the membership and its recreational facilities for members and their guests.

The new lodge will be a two-story, completely air-conditioned structure of contemporary architecture located one-half block from Route 17, the main highway leading south from Charleston. The building will face on Bee Street, enabling comfortable ingress and egress to the club en-

trance.

Lending beauty as well as utility to the new lodge, a unique feature will be the porte-cochere of mason stone veneer at the main entrance.

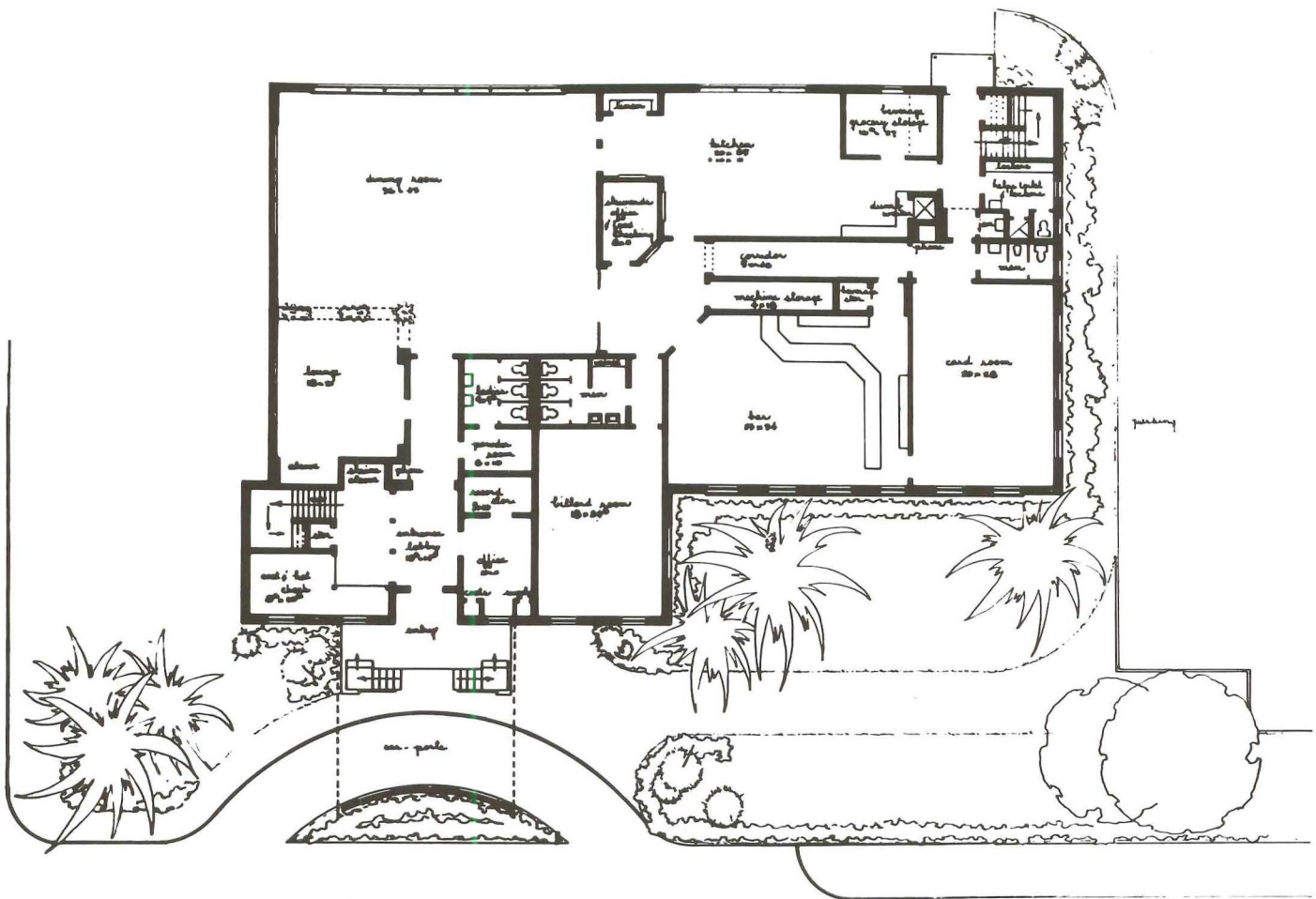
The first floor will contain: the main entrance lobby (Elks seal will be set into floor); a lounge seating 35 persons; dining room to accommodate 150 persons and a spacious bar. There will also be a modern kitchen; billiard room, steward's office and record storage; and rest rooms. A "Shrine Alcove", a place of recognition for deceased members, will grace the main lobby. The entire floor will be of terrazzo tile and all rooms will be wired for music.

The second floor will be accessible by means of the east and west stairway. The main feature

of this floor is the lodge meeting room. Grand and spacious with hardwood flooring, the lodge hall will have a seating capacity for 460 persons. Exposed wood trusses will enhance the beauty of the room. Additional food services will be accessible by means of a dumbwaiter direct from the kitchen. The Lodge Hall can also be utilized for private parties, banquets and receptions.

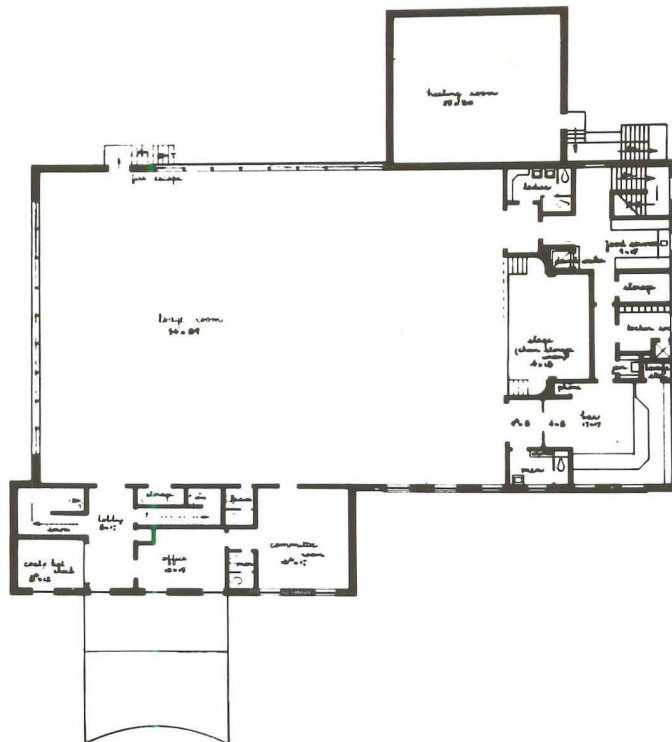
There will also be a stage; committee room and office; bar; locker room with showers; coat and hat check; and rest rooms. This level will lead to a terrace overlooking the Ashley River.

The exterior south wall of the building facing Lockwood Drive will have a neon lighted Elks design. The exterior walls will be of brick veneer with concrete blocks inside.



First Floor

Second Floor





DOCTOR'S OFFICE

JACKSON, MISS.

Jay T. Liddle, Jr.

ARCHITECT

In this medical office building, Architect Jay T. Liddle, Jr., of Jackson, Miss., has designed equal space facilities for two urologists who are joint owners of the building, but who are not professionally associated. Each physician continued his private and separate practice of medicine, the physicians being Dr. Cyrus C. Johnson and Dr. Julian Wiener.

For economy of space and construction cost, it was decided that certain rooms could be used by each physician, with one central heating and air conditioning system. The consultation-examina-

tion-treatment section for each doctor was located along the preferred exterior wall of each suite, with joint facilities located between and at the end of the two interior circulation corridors.

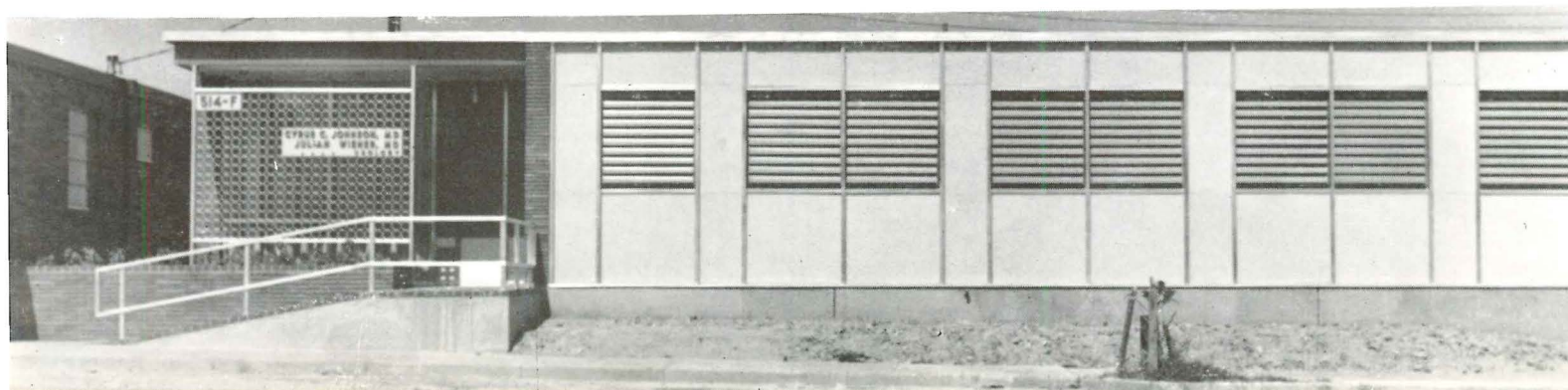
Although each physician has his individual cystoscopic x-ray room for radiographic examinations, only one control unit area and dark room was provided with easy access from both cysto rooms. The one laboratory-utility room and the joint waiting rooms are located for convenient access to both circulation corridors.

The building has masonry ex-

terior walls, with structural steel frame with steel roof joists and gypsum roof deck. Wood stud partitions are plastered and panelled. Acoustical tile ceilings and terrazzo floors are used throughout. Lemlar metal jalousies on the east and west windows enable sun and heat reduction control.

Charles P. McMullan was the associate architect, with Hamilton-Shultz-Lake as mechanical engineers and Campbell Construction Company as the general contractor.

PHOTOS BY EMMET J. KING





OFFICE BUILDING

RICHMOND, VA.

Alan McCullough

ARCHITECT

A district office for a life insurance company, with a large field force, and rental office space are combined in the office building designed by Alan McCullough of Richmond, Va., for the Life Insurance Company of Virginia.

The requirements of the owner called for a district agency office to provide desk space for approximately 40 life insurance agents and a cashier's section on the first floor housing operations of the owner, with the second floor to be rental office area. Parking was provided on the site.

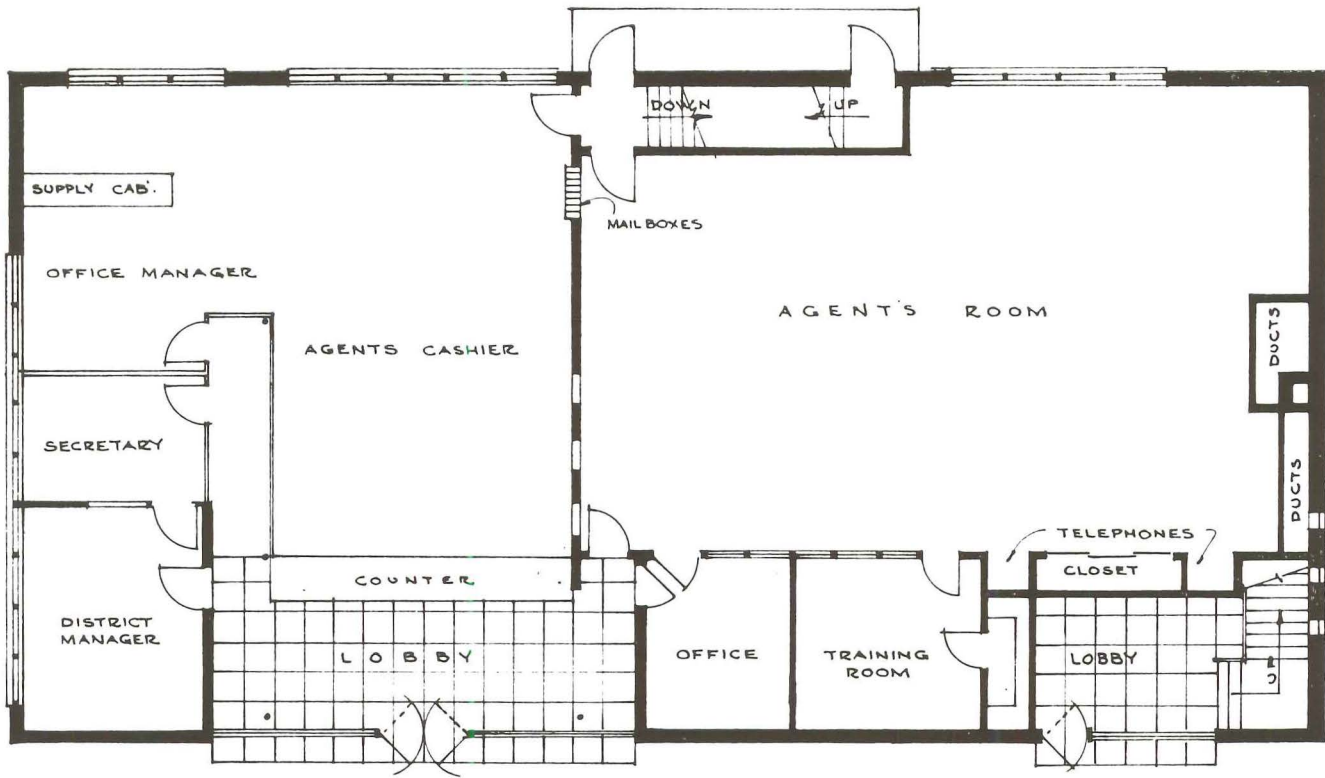
Cost limitations and flexibility of office space on the second floor constituted the primary problems faced by the architect. Flexibility of office space was partially met by the use of underfloor duct wiring to provide floor electrical and phone outlets on a two-foot by two-foot grid.

Moveable partitions were used throughout the second floor and fluorescent lights were installed on raceway tracks to simplify moving as rental facilities require in the future.

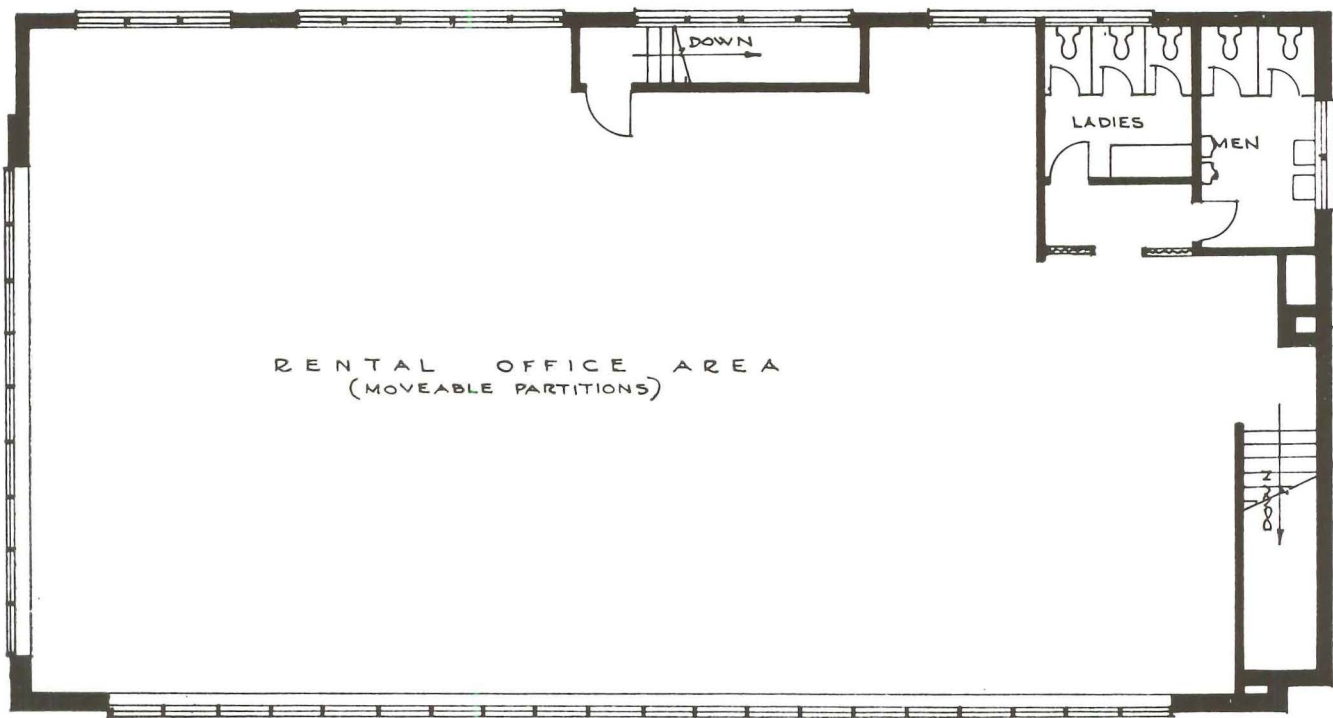
The exterior of the building is colonial pastel brick and lime-

stone. Also used were aluminum awning sash, Georgia white marble built-up roof, concrete floors, gypsum roof on long span joists, plaster walls, rubber tile flooring, fissured acoustical tile ceilings, and natural finish partitions and cabinet work. The building is completely air conditioned.

Southern Engineering and Construction Corporation was the general contractor, with Torrence & Dreelin as structural engineers, and Emmett L. Simmons, all of Richmond, as mechanical engineer.



FIRST FLOOR PLAN



SECOND FLOOR PLAN

ARCHITECTS IN THE NEWS

CHARLESTON, W. Va.—C. E. Silling, prominent local architect and pioneer in the building industry's modular measure movement, has been named as Chairman of a conference on Modern Masonry, which will be conducted by the Building Research Institute in Washington, D. C., September 19-20.

BLACKSBURG, Va.—Clinton H. Cowgill, Head of the Department of Architecture at Virginia Polytechnic Institute, has been chosen to edit the new Handbook of Architectural Practice for the American Institute of Architects.

ATLANTA, Ga. — Paul Malcolm Heffernan has been appointed Director of the School of Architecture at Georgia Institute of Technology. Professor Heffernan succeeds Professor Harold Bush-Brown, Director since 1924, who retired recently.

WASHINGTON, D. C.—James J. Chiarelli has been elected President of the Washington Metropolitan Chapter of the

American Institute of Architects. Edwin T. Turner was named First Vice-President. Re-elected were Harold W. Hall, Second Vice-President; John L. Rogers, Secretary; and Albert C. Bumgardner, Treasurer.

GASTONIA, N. C.—William J. G. Lewis has opened offices in Gastonia for the practice of architecture. Mr. Lewis was formerly with James L. Beam, Jr., of Cherryville.

ATLANTA, Ga.—The firm of Ford and Altman has been formed here for the practice of architecture. The firm is composed of Clement J. Ford and Charles B. Altman. Offices are located at 240 W. Andrews Drive, N.W., in Atlanta.

SUMTER, S. C.—James & Durant, local architectural firm, announced recently that Charles McCreight and O. B. Riley are new associates of the firm.

ATLANTA, Ga.—Barker & Cunningham, Atlanta architects whose offices were recently burned out, are now located in temporary offices at 654 Hemphill Ave, N.W., in Atlanta.

DECATUR, Ga.—Flynn E. Hudson, Jr., and L. Miles Sheffer have formed the firm of Hudson, Sheffer & Associates and are now located at 145 Carter Road in Decatur. Mr. Hudson has practiced in Georgia and Alabama for the past eight years, while Mr. Sheffer was formerly architect for the State Department of Education and the State School Building Authority.

HOPE HULL, Ala.—John Frederick Duggar, III, local architect, has been elected Chairman of a proposed new political party designed to divert Alabama's electoral college vote from both major political parties. A slate of independent candidates for Presidential electors in Alabama has been filed with the Alabama Secretary of State to run in the general election.

RICHMOND, Va.—J. Binford Walford, a member of the architectural firm of Walford & Wright, of Richmond, died re-

cently in a local hospital. Mr. Walford had served as architect for several state colleges and was a member of the American Institute of Architects and the Association for the Preservation of Virginia Antiquities.

GREENVILLE, S. C.—James Douthit Beacham, a member of the local architectural firm of Beacham, Race, Beacham & Wood, died recently at his home here. He was a member of the American Institute of Architects and the Greenville Council of Architects.

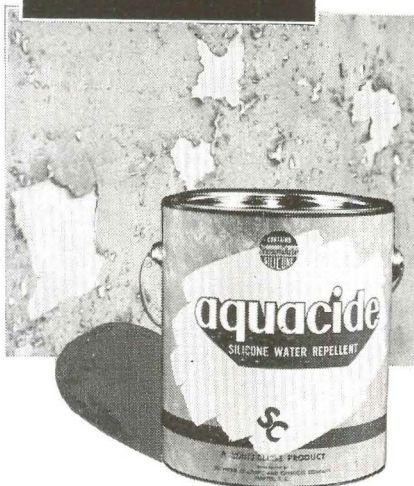
CHARLESTON, W. Va.—Sixteen applicants have been granted licenses to practice architecture in West Virginia by the State Board of Architects.

These include: Stewart R. McKalip and Kenneth Martin of Charleston; Eiland Keith Dean, Huntington; Robert Edmund Schmidt, Fairmont; Allen Burt Mitchell, Morgantown; Stratton Own Hammon, Louisville, Ky.; Roger Whiting Patch, Wayzata, Minn.; William Bailey Smith, Richard C. Murrell, and Ralph Bodman, Baton Rouge, La.; Keith Williams, Winchester, Va.; Charles Dwight Patton, Arlington, Va.; James B. Bell, Alfred Fellheimer and Stewart Wagner, New York City.

ASHEVILLE, N. C.—Carl Sandburg of Flat Rock, N. C., noted poet and biographer, is now an honorary member of the American Institute of Architects. In accepting the membership from F. Carter Williams of Raleigh, President of the North Carolina Chapter of AIA, Mr. Sandburg said, "When an architect measures up to his profession, his work has the value of great poetry."

RALEIGH, N. C. — Edward W. Waugh, local architect, has returned from Stanford University, where he served as a speaker for the Sixth Annual School Planning Conference of Stanford University's School of Education. Mr. Waugh was invited to present the work of school planners in the Eastern United States to the western group, which included school superintendents, architects, school administrators, and other leaders in school planning.

aquacide . . .
death to water damages
on above-grade masonry



You can prevent water seepage . . . minimize efflorescence, retard weathering and spalling,—when you

Specify Aquacide

silicone water repellent for all types of above-ground masonry. —meets Federal Specifications SS-W-00110.

—for details, write SOUTHERN COATINGS & CHEMICAL CO. Sumter, South Carolina

OFFICE BUILDING

Jacksonville, Fla.

(Continued from page 5)

are smoothly polished French Hauteville marble slabs. Except in the basement, the work areas are floored with easily maintained homogenous vinyl plastic in modern, custom colors.

Five elevators, four serving from the basement to the fifteenth floor and one shuttling from the fifteenth floor to the "Skyroom", serve the building. The cabs are indirectly lighted, trimmed with chromium-nickel stainless steel, and properly ventilated by a concealed blower system with two control panels, one located at each side of the doorway for the convenience of passengers. All operate without attendants, being fully automatic with electronic controls which adjust the service to meet varying traffic needs throughout the day. Illuminated signs advise passengers "this car next" or "other car next." Automatic elevators give passengers the best possible service and protection. Hoistway doors close slowly and are equipped with protective edges which cause the doors to reopen whenever they encounter an obstruction. Elevators cannot leave a landing until the doors are both closed and locked. The elevators can neither start nor continue to run when the car door is open; should the door inadvertently be opened while the elevator is in transit, the car will come to a stop. Cars cannot be overloaded as an automatic weighing device closes the doors when the load limit is reached. An intercommunication system provides audible contact between each car and both the starter's station and the building engineer's office.

Passenger elevators travel at 700 feet per minute and are designed to produce an average waiting interval on upper floors of 30 seconds. Two electrically operated dumbwaiters serve to speed the handling of papers and small articles between the floors occupied by owner.

The glass enclosed eighteenth story serves as an observation lounge and executives' dining room. Its isolated height provides the best obtainable panoramic view of Jacksonville. As one steps from the elevator he is quickly oriented by a compass design embedded in the terazzo floor. A

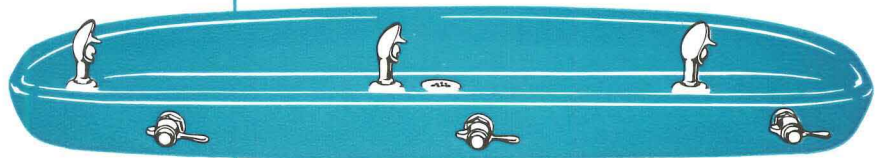
wide window ledge of dark variegated Renfrew marble, quarried a few miles west of Newton Abbot in Devonshire, England, prevents one from having any sensation of instability due to the elevation. The planter box at the stairway and the few wall surfaces are attractively panelled with Came-roon (Africa) zebrawood. As in the remainder of the building, concealed speakers convey selected recorded music and permit the paging of individuals or announcing matters of general in-

terest. Modern upholstered chairs, lush carpets and drapes, and Chinese accessories combine to make the "Skyroom" Jacksonville's most ultra scenic room.

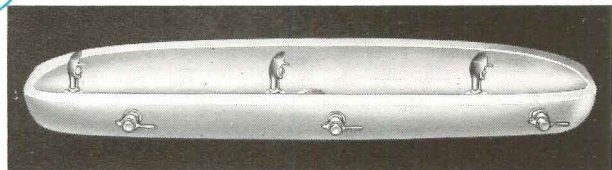
The pylon which rises above the "Skyroom" is illuminated at night with neon tubes which flash in a waterfall cascade pattern and are coordinated with eight feet high letters "INDEPENDENT LIFE" silhouetted against the limestone wall. Another illuminated sign consisting of 13 feet high letters flash the owner's

A NEW HAWS FOUNTAIN IN

Fiberglas



in **5** decorator colors* . . . and white



Designed by: CHANNING WALLACE GILSON



*MODEL No. 10Y complementary colors: Cerulean, Pistachio, Coral Accent, Yellow Mist, Gray Satin, and Petal White.

The striking lines of HAWS Model 10Y fountains, in your choice of complementary color* at no extra charge . . . add a brilliant finishing touch to your design. These three-bubbler wall mounted models are constructed of REINFORCED FIBERGLAS PLASTIC . . . the modern strength material that is extremely light in weight!

Model 10Y contains all of the HAWS advanced sanitation features. Angle stream fountain heads are raised and shielded, and are VANDAL PROOF mounted on receptor. Valves have automatic stream control and are self-closing. All exposed trim is chrome plated.

Take your choice of color* . . . and design this beauty into your next school job. It's easier to install and built for a lifetime of sanitary service.

Write for full information, TODAY!

HAWS

DRINKING FAUCET CO.

1443 FOURTH STREET (Since 1909) BERKELEY 10, CALIFORNIA

FREE NEW AID

to classroom planning for

ARTS and CRAFTS



New Ideas! New Designs! New Convenience!

Here it is—Technical Furniture's new catalog of equipment and furniture for art and craft departments of schools, colleges and universities.

It's a big book, 64 pages, packed with helpful information—nine typical floor plan layouts, installation ideas, suggestions for greatest classroom convenience and efficiency. Gives details and specifications of the more than 500 cabinets, tables, display cases, work benches, storage assemblies and other equipment in Technical Furniture's extensive line. Explains our complete engineering and planning facilities which are available to you without cost or obligation.

FREE! This helpful new book is yours for the asking. Just mail the coupon for your copy.

TECHNICAL FURNITURE INC.

STATESVILLE, NORTH CAROLINA

Distributed exclusively by representatives of Kewaunee Mfg. Co., Adrian, Mich.

TECHNICAL FURNITURE INC. 3020 W. Front Street Statesville, N. C. Please send a free copy of your new catalog "Arts and Crafts."	Name _____
	Title _____
	Address _____
	City _____ State _____

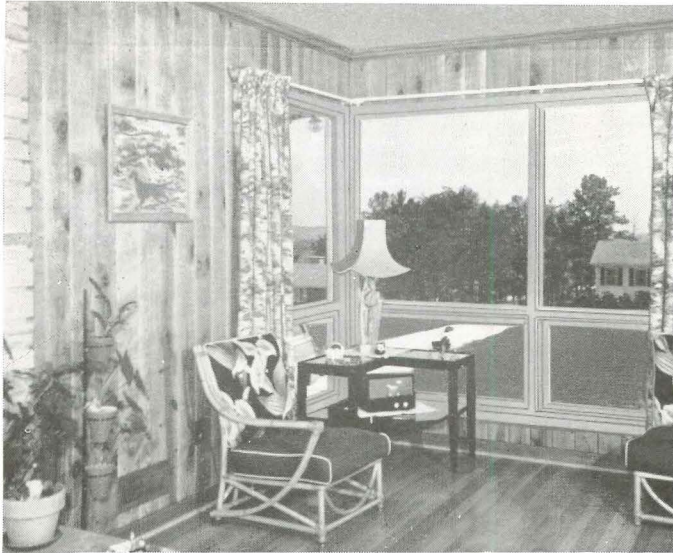
name toward the Matthews Bridge approach to Jacksonville.

Access for freight and service deliveries to the building is from West Church Street through a wide court to a loading platform, located conveniently close to the service elevator. The food served in the employees' cafeteria is prepared in the building's own spotless tiled kitchen, sparkling with stainless steel equipment. Three main steam boilers were hoisted during construction to their assigned space on the fifteenth floor. This unique location, which will result in more efficient and hence economic operation, is being utilized for the first time in any comparable project in the Southeast. This also frees basement spaces for use of the firm's modern printing plant. Wall mounted plumbing fixtures and dividing stalls suspended from the ceiling in all public toilet rooms will enable these spaces to be maintained immaculate with a minimum of labor.

The interior temperature control system is the most advanced type available for multi-story buildings. In addition to simple control of temperature, it also effects humidity control and provides ventilation. In most locations, individually controlled units below the windows blend conditioned air, conveyed via high pressure conduits, with room air that has been tempered by either heated or chilled water, dependent on the outside temperature. More than 500 tons of air conditioning use approximately 2,500 gallons of water per minute.

Electricity is supplied by direct feeders from Jacksonville's cross-connected underground electric system, providing for uninterrupted service.

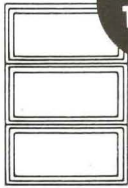
The building was designed and construction supervised by the Jacksonville firm of Kemp, Bunch & Jackson, Architects. The S. S. Jacobs Company of Jacksonville, general contractors, were in charge of all construction operations. Associated with the architects were Van Wagenen, Taylor and Van Wagenen, consulting mechanical engineers; J. L. McCollough, consulting structural engineer; Robert M. Garth, consulting electrical engineer; and Ben Jones, decorating consultant. Albert Smith, associate of Kemp, Bunch & Jackson, was project manager for the architects.



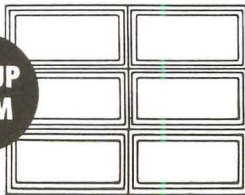
for *freedom of design*

SPECIFY NATIONAL PANEL WINDOWS

**STACK
THEM**



**GROUP
THEM**



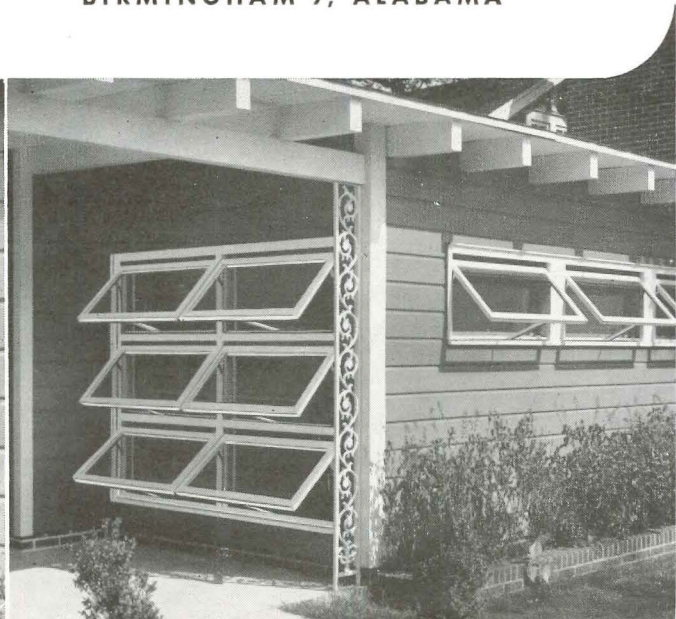
**SET
Them in
Ribbons**



Versatile National Panel Windows offer a highly effective tool for creating dynamic new beauty in residential design. Window walls, casement groupings, panel view arrangements with picture windows, as many different architectural effects as desired can be created. Precision, factory-made, weatherstripped, screened and chemically treated against decay these factory-glazed and bedded windows are ready to be slipped into rough openings. Installation is quick, cost are held to a minimum. There is a colorful, descriptive 8-page booklet available upon request. We will be glad to send you one.

NATIONAL WOODWORKS, INC.

2201 29th. AVENUE, NORTH
BIRMINGHAM 7, ALABAMA



Bulk Rate
U. S. POSTAGE PAID
Permit No. 442
Raleigh, N. C.

ARCHITECTURAL SOUTH
BOX 517
CHARLOTTE 1, N. C.
FORM 3547 REQUESTED

Donald B. Winecoff
2632 McClintock Rd. 4
Charlotte 5, N. C.

NOW

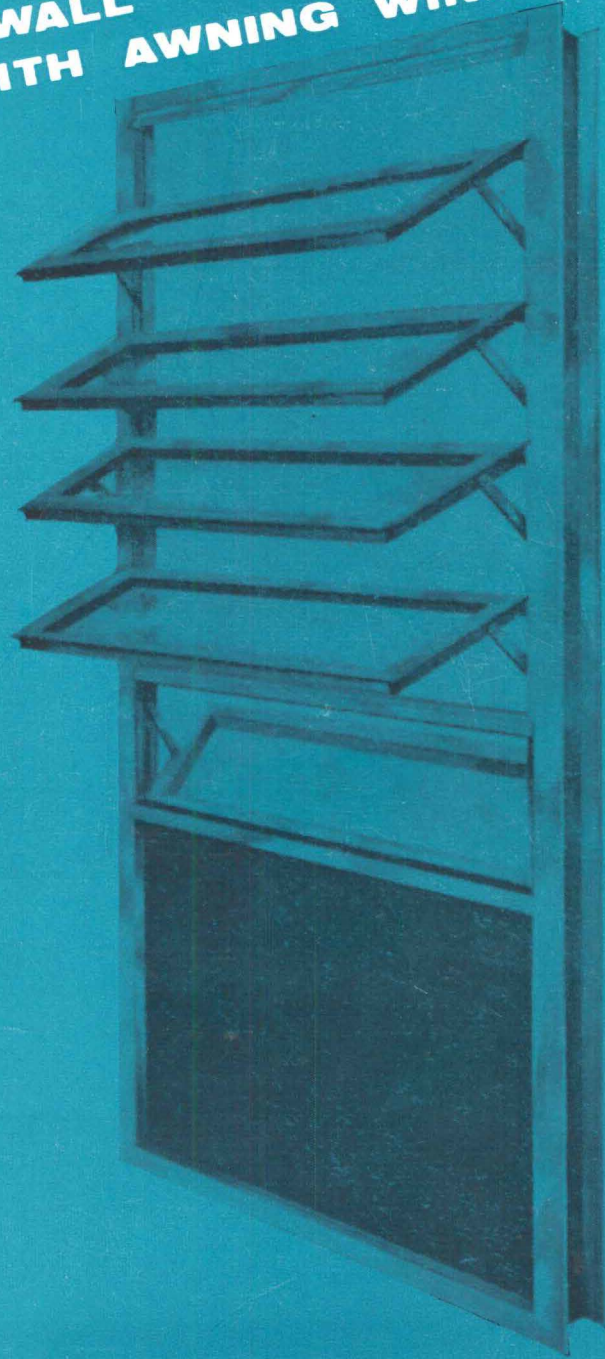
A COMPLETE SCHOOL WALL READY TO INSTALL WITH AWNING WINDOWS

ARTEX PANEL WALL UNITS

"First and Finest"

ARTEX Aluminum Panel Wall Units are the finest integrated panel wall units engineered to incorporate many design advantages in modern school construction. The awning window used in the ARTEX Panel Wall exceeds all requirements of the Aluminum Window Manufacturers Association Specification A - A2 for weather-stripped awning windows. Three types of panel wall units in seven versatile types of arrangements makes the ARTEX Panel Wall the most adaptable to meet all specifications. Ease of installation, weather tightness with expansion and contraction considered, and economical construction makes ARTEX Panel Wall Units in demand the country over. On your next construction job — insist upon ARTEX.

- ECONOMICAL
- WEATHERTIGHT
- VERSATILE
- DURABLE



COMPLETE DRAWINGS AND SPECIFICATIONS ON REQUEST. *

ARTEX CORPORATION
SUMMERVILLE, S. C.
Write, Wire or Phone for Complete Details

Name _____
Address _____
City _____
County _____ State _____