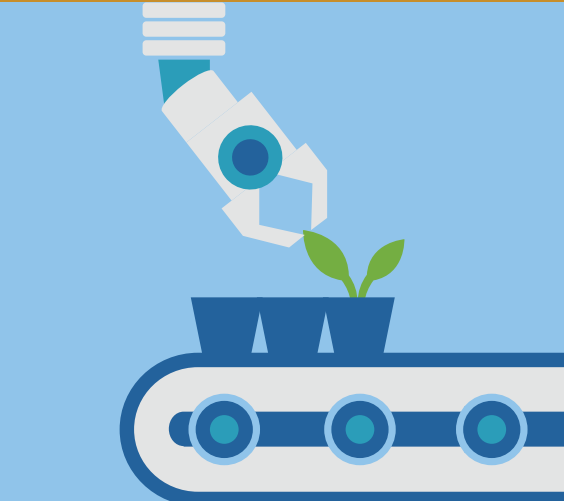
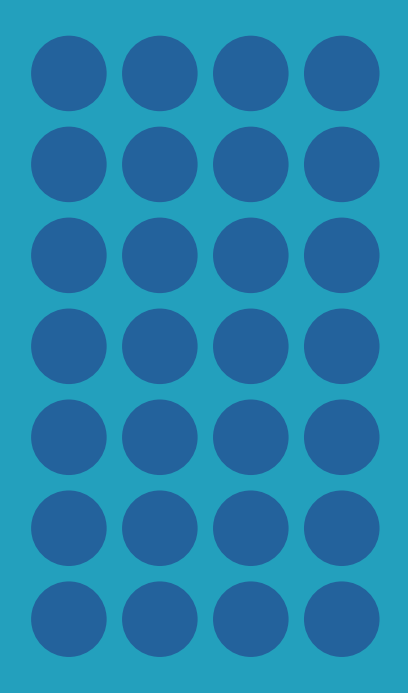
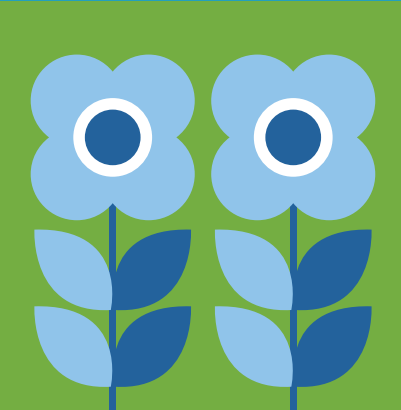


VANBELLE

2024 Reference Guide

vanbelle.com



CONTENTS

04

**Aerial Views of
Van Belle Nursery**

06

JetPack™ and Rocketliners®

09

**Bloomin' Easy®
Product Reference**

20

**Proven Winners®
ColorChoice®
Product Reference**

28

**Non-Branded
Product Reference**

40

Ordering FAQ

Main Office (Mailing)

Van Belle Nursery
34825 Hallert Road
Abbotsford, BC V3G 1R3
1-888-826-2355

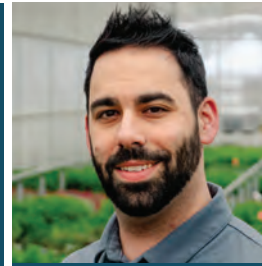
Clayburn Site Office

4262 Wright Street
Abbotsford, BC V2S 7Y8
1-888-826-2355

US Mailing

PMB 348, PO Box 8000
Sumas, WA 98295-8000

Printed in Canada
Published June 2023



Kelvin Monteiro
VP, Youngplants
kelvin.monteiro@vanbelle.com
604-226-6988



Jeff O'Brien
Director of Sales
jeff@vanbelle.com
604-309-8800



Bill Heinrichs
Account Manager
bill.heinrichs@vanbelle.com
604-866-9405



Adam Underwood
Account Manager
adam@vanbelle.com
604-866-9110



Scott Erickson
Major Account Manager
scott@vanbelle.com
604-866-9734



Boyd Fletcher
Account Manager
boyd@vanbelle.com
778-539-7845



Anna Vig
Account Manager
anna.vig@vanbelle.com
778-918-3396



Josaphine Sakran
Manager of Logistics and
Customer Experience
josaphine@vanbelle.com



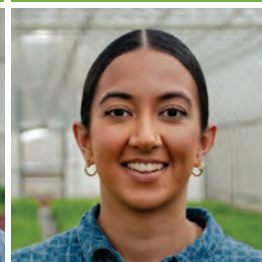
DeVonne Friesen
Vice President
devonne@vanbelle.com
604-866-9593



Kevin Cramer
Marketing Manager
kevin@vanbelle.com
604-996-1909



Madison House
Consumer Marketing
Manager
madison@vanbelle.com



Aanam Gill
Marketing Coordinator
aanam@vanbelle.com



Nico Abais
Graphic & Web Designer
nico.abais@vanbelle.com



It's a cold, damp early spring day, but the newest team members on Van Belle's propagation team don't seem to mind – they just keep sticking fresh cuttings quickly, methodically, and precisely. These three new team members – the ISO Cutting Planter 2500 robots – are just the latest innovation Van Belle Youngplants employs to increase the quality and value for growers across North America.

"We have a long history of adopting or developing our own tech to make better plants and improve the experience for nursery growers," says Jeff O'Brien, Director of Sales. "Whether it's figuring out that rice

hulls are ideal for top dressing, designing our no waste, labor-saving Flo-Go shipping system, or our Rocketliner and JetPack growing trays, we always focus on how it makes things better for growers – our industry partners."

"A big challenge for propagating the highest quality shrubs possible", says Director of Operations, Ieda Del Bianco, "is completing production during the prime growing time in spring and early summer". When we're able to stick the majority of cuttings during the optimal days in spring, our efficiency, rooting percentage and overall plant quality goes way up.



(Above) Ieda Del Bianco and Jeff O'Brien at the Clayburn Site.

Our production targets keep climbing, so the sticking robots help us make this happen, which gets everyone excited."

"This efficiency means we can control cost pressures better," continues Del Bianco. "And it also means our growers focus more time on plant health and improvements, rather than on repetitive tasks. The plants and people are happier!"

"When our customers receive an order from us, we know they don't think about who stuck the plants,"

says O'Brien. "But they do care what the plants look like and how they perform. And when a customer tells us how excited they are to get inputs from us and how it makes their day and business better, it gets us pumped and hungry to keep innovating. Today, robots. Tomorrow, who knows?" he says with his signature, energetic smile.

STICKY FACTS



2,000

CUTTINGS STUCK/HOUR



35,000

PHOTOS TAKEN TO LEARN
200+ VARIETIES



40+

ACTIVE SENSORS OPTIMIZE
STICKING QUALITY AND EFFICIENCY



FloGo®

The Pot-less Shipping Solution

SAVE ON LABOR COSTS

Liners arrive de-potted inside 100% recyclable cardboard boxes, eliminating a production step and waste.

REDUCE FREIGHT EXPENSES

Fit significantly more plants on a pallet, meaning you spend less per plant on freight.



FloGo® can fit 1500 RocketLiners® and 3200 JetPacks™ per pallet!



“Our crew appreciates that Van Belle’s pot-less shipping makes things a lot easier. We save a ton of time and work by not having to pull liners from trays. No surprise non-rooted crops and less clean up and no plastic trash. Our first year we saved a full week of potting with a crew of eight. As labor costs rise, and our Van Belle order increases, our savings expand even further.”

–Mike Mocek

Production Manager, Canterbury Horticulture

FloGo
SHIPPING SYSTEMS

Contact our friendly Youngplants team at 1-888-826-2355 or email youngplants@vanbelle.com to see how FloGo® can benefit your business.



Location:
Pacific Northwest
Abbotsford, BC

Van Belle Nursery

QUICK FACTS

- Established: 1973
- President: Dave Van Belle
- Founders: Bill and Grace Van Belle
- Four growing sites: 100 acres total
- Propagation specialists
- 100% containerized growing
- Ship across North America
- Brands:
 - Bloomin' Easy®
 - Proven Winners® ColorChoice®
- Customers: We work with the finest nurseries across North America
- Product specialty: Cold-hardy ornamentals

VANBELLE
CELEBRATING
50
YEARS



HALLERT



PAGE CREEK



CLAYBURN



CLIFFSIDE



PERFORMANCE YOU DESERVE

TWO SIZES TO BEST MEET YOUR NEEDS

JetPack™ is our newly developed 157cc plug (2.5 inch), tailored to the popular one gallon retail program and to growers in Southern or West Coast regions where the similar sized 2.25 inch input is widely used. The JetPack™ offers the same great qualities and performance as the RocketLiner®.

RocketLiners® are jumbo 600cc plugs designed to transplant directly into a 2, 3 or 5 gallon and finish in a single season. Avoid the costly process of potting a smaller or less responsive liner into a 1 or 2 gallon before shifting up to a 3 or 5 gallon. Skip a step and save significant costs. The majority of our varieties will finish a 2 or 3 gallon in an average of 8-12 weeks from a RocketLiner® size.

ROCKETLINER® FINISHING TIMELINE EXAMPLE

HYDRANGEA MAC. GRIN AND TONIC™



*These finishing times are dependent on many factors including (but not limited to) soil/media, climate temperatures and available water for the plants.



RocketLiners® and JetPacks™ are Fueled by Innovation™ to give you:

- Greater fresh root mass and surface area
- Superior vertical root training
- Faster finishing times

When combined with improved genetics from Bloomin' Easy® and Proven Winners® ColorChoice®, the value you receive is beyond compare. It's what you deserve.

Our plan for your success as a grower contains two key components:

1. HIGH PERFORMING INPUTS

- ✓ RocketLiners® for 2, 3 and 5 gallon programs
- ✓ JetPack™ 2.5 inch liners for 1 gallon programs or Southern or West Coast regions

2. POT-LESS FLOGO® SHIPPING

With our plan in action, growers like you can expect the following production results:

- ✓ Less freight cost per plant by fitting significantly more plants on a pallet
- ✓ Reduced labor costs on potting lines without plastic pots to process
- ✓ Better control over inventory and space through faster finishing times
- ✓ Higher quality and profit per plant you sell



YOU DESERVE A PROPAGATION PARTNER YOU CAN TRUST

We're growers too, so we understand your needs as a grower. Our sales and production teams work together at the nursery to continually earn your trust with the best service and product quality each season. We will never take your partnership and business with us for granted.





The Plant Brand for Young Homeowners



Millennials, now the largest consumer group, expect first-time success and plenty of “show-me-how” support to ensure their time and dollars are protected.

Bloomin' Easy® lays the foundation for your long-term success in a rapidly changing marketplace:

- Superior, low-maintenance varieties
- Relevant messaging and how-to support
- Brand partner marketing support





SELL MORE WITH POP

Inspire them to 'Jump In' with attractive merchandise displays that reinforce the Bloomin' Easy message.

Order now through your Bloomin' Easy supplier or direct from Orora Visual.

For Bloomin' Easy marketing support, contact Marketing Manager, Kevin Cramer at: kevin@bloomineasyplants.com, 1-888-826-2355

- 1 POSTERS
- 2 BENCH TAPES
- 3 BENCH CARDS
- 4 A-FRAMES

*All items are suitable for indoor and outdoor use



CARE REMINDERS

Bloomin' Easy® Care+



We're proud to introduce our brand new smartphone app designed specifically for young homeowners.

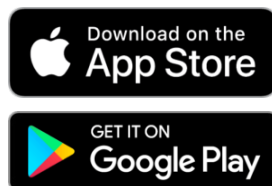
By delivering a ton of added value to Bloomin' Easy customers right to their pocket, we aim to better nurture our growing community of people who desire (and deserve!) all the benefits of a beautiful outdoor space without sacrificing their busy lifestyles.

- Adds unique value to your Bloomin' Easy program
- Effective selling and training tool for garden center staff
- Wraps Bloomin' Easy support content and Care Reminders into a beautiful, easy to use assistant for consumers that truly seek to Plant, Water and Relax®

You can be one of the first to download and experience Bloomin' Easy® Care+ this season! Scan to download now.



download
the BE Care+
app



DIGITAL ASSETS MANAGEMENT



Easy Marketing Tools at your fingertips

media.bloomineasyplants.com

Utilize effective marketing, sales and production resources for your Bloomin' Easy® program with our redesigned asset management tool, available 24/7 for you and your customers.

- Brand graphics, logos
- Brand guide
- Plant and model photos
- How-to videos
- PDF sell sheets
- Production guides and more



request
your access
to the DAM

**bloomin'
easy**
PLANT, WATER, RELAX.®

2024 NEW RELEASES

DRAGON BABY™
HYDRANGEA PANICULATA **14**

PLUM GORGEOUS™
LOROPETALUM **16**

CALICO KITTY™
PHYSOCARPUS OPULIFOLIUS **16**

SAVANNAH SUNSET™
PHYSOCARPUS OPULIFOLIUS **16**

GRIN AND TONIC™
HYDRANGEA MACROPHYLLA **13**

PINK POSY™
SYMPHORICARPOS
DOORENBOSII **18**

Product Reference

Bloomin' Easy®

Buddleia / Butterfly Bush



Birthday Cake™

Buddleia x 'PODvb3-30'

- Full sun
- Zones 5 to 9
- 4-5ft tall x 2-3ft wide
- Upright form
- Pink flowers from summer through autumn

USPPAF, CPBRAAF



Blueberry Pie™

Buddleia x 'PODvb9-15'

- Full sun
- Zones 5 to 9
- 2-3ft tall x wide
- Mounding form
- Blue/purple flowers from summer through autumn

USPPAF, CPBRAAF

Photo courtesy of Green Leaf Nursery

Caryopteris / Bluebeard



Beekeeper™

Caryopteris x clandonensis 'Minigold'

- Full to part sun
- Zones 5 to 9
- 2-3ft tall x wide
- Mounding form
- Rich blue flowers in early summer

USPPAF, CPBRAAF

Diervilla / Bush Honeysuckle



Nightglow®

Diervilla splendens 'El Madrigal'

- Full sun
- Zones 3 to 9
- 2-3ft tall x wide
- Mounding form
- Yellow flowers in spring through summer

USPP#28060, CPBR#5626



Firefly®

Diervilla sessilifolia 'Bocofire'

- Full sun
- Zones 3 to 9
- 2-3ft tall x wide
- Mounding form
- Bright yellow flowers in late spring

USPPAF, CPBRAAF

Hydrangea macrophylla / Bigleaf Hydrangea



Cherry-Go-Round™

Hydrangea macrophylla 'Hokomaburlac'

- Part sun
- Zones 5 to 9
- 2-3ft tall x wide
- Mounding form
- Cherry-red flowers from late spring through autumn

USPPAF, CPBRAAF



Frill Ride™

Hydrangea macrophylla 'Hokomabavi'

- Part sun
- Zones 5 to 9
- 2-3ft tall x wide
- Mounding form
- Rich pink flowers from late spring through autumn

USPPAF, CPBRAAF



Grin and Tonic™

Hydrangea macrophylla 'Hokomagrito'

- Part sun
- Zones 5 to 9
- 2-3ft tall x wide
- Mounding form
- Green and white flowers from spring through autumn

USPPAF, CPBRAAF

Hydrangea macrophylla / Bigleaf Hydrangea



Kimono™

Hydrangea macrophylla
'Hokomabebos'

- Part sun
- Zones 5 to 9
- 2-3ft tall x wide
- Mounding form
- Sultry two-tone red flowers rebloom from mid spring to autumn

USPPAF, CPBRAE



Starfield™

Hydrangea macrophylla
'Hortmafafa'

- Part sun
- Zones 5 to 9
- 2-3ft tall x wide
- Mounding form
- Reblooming blue (in acidic soil) or pink (in neutral soil) Japanese-style double flowers from mid spring through autumn

USPP#32164, CPBRAE



Tilt-A-Swirl®

Hydrangea macrophylla
'QUFU'

- Part sun
- Zones 5 to 9
- 3-4ft tall x wide
- Mounding form
- Red and green bicolor flowers from spring through autumn

USPP#26426, CPBR#5408

Hydrangea paniculata / Hardy Hydrangea



Candelabra®

Hydrangea paniculata
'Hpopr013'

- Full to part sun
- Zones 3 to 8
- 4-6ft tall x wide
- Upright form
- Cream flowers age to pink/red from summer through autumn

USPP#27472, CPBR#6053



NEW

Dragon Baby™

Hydrangea paniculata
'HYLV17522'

- Full to part sun
- Zones 3 to 8
- 2-3ft tall x wide
- Upright form
- A compact bouquet with full panicles that start creamy lime and fade to a rich pink

USPPAF, CPBRAE



Flare™

Hydrangea paniculata
'Kolmavesu'

- Full to part sun
- Zones 3 to 8
- 2-3ft tall x wide
- Upright form
- Cream flowers age to red from summer through autumn

USPP#26928, CPBR#6047



Moonrock®

Hydrangea paniculata
'Kolmakilima'

- Full to part sun
- Zones 3 to 8
- 4-6ft tall x wide
- Upright form
- Lime and cream flowers from summer through autumn

USPP#29853, CPBR#5853



Torch™

Hydrangea paniculata
'HPOPR018'

- Full to part sun
- Zones 3 to 8
- 4-5ft tall x wide
- Upright form
- Cream flowers age to pink/red from summer through autumn

USPP#32972, CPBRAE

Dragon Baby™

Hydrangea quercifolia / Oakleaf Hydrangea



Toy Soldier™

Hydrangea quercifolia
'Bocotoso'

- Full to part sun
- Zones 5 to 9
- 4-5ft tall x wide
- Upright form
- Cream/pink flowers from early summer through autumn

USPPAF, CPBRAE

Lagerstroemia / Crapemyrtle



Princess Holly Anne™

Lagerstroemia x 'GA0701'

- Full sun
- Zones 6 to 9
- 4ft tall x wide
- Upright form
- Cherry-red flowers from summer through autumn

USPPAF

Hydrangea serrata / Mountain Hydrangea



Pink Dynamo™

Hydrangea serrata 'JPD01'

- Part sun
- Zones 5 to 9
- 2-3ft tall x wide
- Mounding form
- Hot pink lacecap flowers from spring through autumn

USPP#33412, CPBRAE



Princess Kylie™

Lagerstroemia x 'GA0803'

- Full sun
- Zones 6 to 9
- 4-5ft tall x wide
- Mounding form
- Magenta flowers from summer through autumn

USPPAF

Ilex / Holly



Great Neighbor™

Ilex x 'EN4'

- Full to part sun
- Zones 6 to 9
- 8-12ft tall x 6-8ft wide
- Pyramidal form

USPPAF



Princess Lyla™

Lagerstroemia x 'GA0702'

- Full sun
- Zones 6 to 9
- 2ft tall x 2-3ft wide
- Mounding form
- Rose-pink flowers from summer through autumn

USPPAF



Princess Zoey™

Lagerstroemia x 'GA0804'

- Full sun
- Zones 6 to 9
- 4-5ft tall x 3ft wide
- Upright form
- Red and pink flowers from summer through autumn

USPPAF



Lonicera / Box Honeysuckle



Thunderbolt®

Lonicera nitida 'Golden Glow'

- Part sun
- Zones 5 to 9
- 3-4ft tall x wide
- Mounding form

USPP#26598, CPBRA



NEW

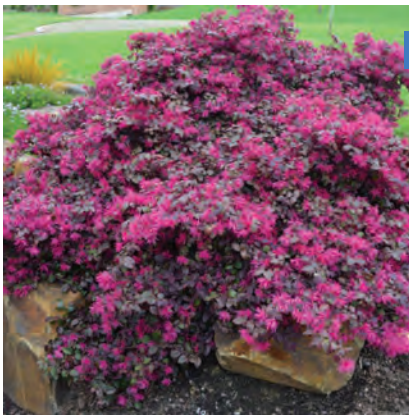
Savannah Sunset™

Physocarpus opulifolius 'LP1'

- Full sun
- Zones 3 to 7
- 4-5ft tall and 3-4ft wide
- Mounding form
- Vibrant color-changing foliage starts electric orange followed by yellow then red

USPP#34993, CPBR#10782

Loropetalum / Chinese Fringe Flower



NEW

Plum Gorgeous™

Loropetalum chinense 'Plum Gorgeous'

- Full to part sun
- Zones 7 to 9
- 3-4ft tall x 4-5ft wide
- Mounding form
- The new standard for a Southern staple

Potentilla / Cinquefoil



Bella Bellissima®

Potentilla fruticosa 'Hachliss'

- Full sun
- Zones 3 to 6
- 2-3ft tall x wide
- Mounding form
- Rich pink flowers in spring through autumn

USPP#27715, CPBR#5599

Physocarpus / Ninebark



NEW

Calico Kitty™

Physocarpus opulifolius 'ZleBIC14'

- Full sun
- Zones 3 to 7
- 4-5ft tall x 3-4ft wide
- Mounding form
- Improved form, cold hardiness, flowering and foliage offering rich caramels and juicy reds

USPPAF, CPBRA



Bella Bianca®

Potentilla fruticosa 'Hachbianca'

- Full sun
- Zones 3 to 7
- 1-2ft tall x wide
- Mounding form
- White flowers in spring through autumn

USPPAF, CPBRA



Panther®

Physocarpus opulifolius 'N5'

- Full sun
- Zones 3 to 7
- 4-5ft tall x 3-4ft wide
- Upright form
- Pink flowers in late spring; prized for foliage

USPP#30820, CPBRA



Bella Sol®

Potentilla fruticosa 'Hachdon'

- Full sun
- Zones 3 to 6
- 2-3ft tall x wide
- Mounding form
- Orange flowers from spring through autumn; may turn yellow in summer

USPP#27685, CPBR#5598

Rhododendron / Azalea



Ever After™ Blush

Rhododendron x 'RLH2-4P1-5'

- Part sun
- Zones 6 to 9
- 2-3ft tall x 3-4ft wide
- Mounding form
- Blush pink flowers from spring through autumn

USPP#31114



Ever After™ Pink

Rhododendron x 'RLH2-3P8-2'

- Part sun
- Zones 6 to 9
- 2-3ft tall x 3-4ft wide
- Mounding form
- Rich pink flowers from spring through autumn

USPP#31116



Ever After™ Ruby

Rhododendron x 'RLH2-2PA1S'

- Part sun
- Zones 6 to 9
- 3-4ft tall x wide
- Mounding form
- Red flowers from spring through autumn

USPP#31115

Rosa / Rose



Cinnamon Hearts™

Rosa x 'VLR13003'

- Full sun
- Zones 3 to 9
- 2-3ft tall x wide
- Mounding form
- Red flowers from spring through autumn

USPPAF, CPBRA

Sorbaria / False Spirea



Cherry On Top™

Sorbaria sorbifolia 'Bococot'

- Full to part sun
- Zones 2 to 10
- 4-5ft tall x wide
- Upright form
- Cream plume flowers become cherry red for weeks of extended appeal

USPP#33639, CPBRA



Gumball Goody™



Gumball Goody™

Rosa x 'VLR12062'

- Full to part sun
- Zones 3 to 9
- 2-3ft tall x wide
- Mounding form
- Coral pink/lemon yellow flowers from spring through autumn

USPPAF, CPBRA



Peach Lemonade®

Rosa 'Radpastel'

- Full sun
- Zones 3 to 9
- 2-3ft tall x wide
- Mounding form
- Yellow, white and blush pink flowers from spring through autumn

USPP#26675, CPBR#5392

Spiraea / Spirea



Pineapple Poprocks®

Spiraea japonica 'Golden Select'

- Full sun
- Zones 3 to 9
- 2-3ft tall x wide
- Mounding form
- Pink/purple flowers from spring through autumn

USPPAF, CPBRAAF



Poprocks® Petite

Spiraea japonica 'Odessa'

- Full to part sun
- Zones 3 to 9
- 2-3ft tall x wide
- Mounding form
- Candy pink flowers in spring through summer

USPP#28508, CPBRAAF



Rainbow Fizz™

Spiraea japonica 'Matgold'

- Full to part sun
- Zones 3 to 8
- 3-4ft tall x wide
- Mounding form
- Rich pink flowers in spring through summer

USPP#28876, CPBR#5634

Symphoricarpos / Snowberry



Pinky Promise™

Symphoricarpos doorenbosii 'Kolmpica'

- Full sun
- Zones 3 to 7
- 2-3ft tall x 3ft wide
- Mounding form
- Pink ornamental berries in late summer through autumn

USPPAF, CPBRAAF



NEW

Pink Posy™

Symphoricarpos doorenbosii 'TBD'

- Full sun
- Zones 3 to 7
- 2-3ft tall x 3ft wide
- Mounding form
- Rich pink ornamental berries steal the show in late summer and fall

USPPAF, CPBRAAF

Syringa / Lilac



Pearl Potion™

Syringa meyeri 'JDB123WHITEHOUSE'

- Full sun
- Zones 3 to 7
- 4-5ft tall x 5-7ft wide
- Mounding form
- Flowers start pink and turn to pearl white each spring

USPP#31664, CPBRAAF

Thuja / Cedar / Arborvitae



Private Jet™

Thuja occidentalis 'King of Brabant'

- Full to part sun
- Zones 3 to 8
- 15-20ft tall x 4-5ft wide
- Upright form
- Perfect choice for a privacy hedge

USPP#29678, CPBRAAF



Weigela

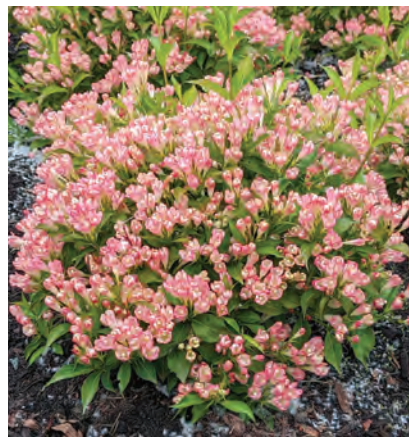


Afterglow™

Weigela x 'AZ'

- Full sun
- Zones 4 to 7
- 3-4ft tall x wide
- Mounding form
- Light pink flowers in late spring, may rebloom in autumn

USPPAF, CPBRAf



Peach Kisses™

Weigela x 'Slingpink'

- Full sun
- Zones 4 to 7
- 3ft tall x wide
- Mounding form
- Peachy pink flowers from late spring through autumn

USPP#29149, CPBRAf



Crimson Kisses®

Weigela x 'Slingco 1'

- Full sun
- Zones 4 to 7
- 3-4ft tall x wide
- Mounding form
- Red flowers from late spring through autumn
- Canada & US online only

USPP#23654, CPBR#5266



Strobe®

Weigela x 'WOF/R'

- Full sun
- Zones 4 to 7
- 3ft tall x wide
- Mounding form
- Dramatic foliage changes spring through autumn

USPP#30866, CPBRAf

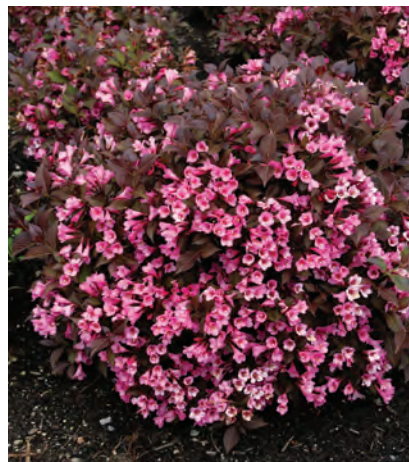


Electric Love®

Weigela x 'ZR1'

- Full sun
- Zones 4 to 7
- 1-2ft tall x 2-3ft wide
- Mounding form
- Red flowers in late spring, may rebloom in autumn

USPP#30065, CPBRAf



Stunner®

Weigela x 'Spring 2'

- Full sun
- Zones 4 to 7
- 3-4ft tall x wide
- Mounding form
- Hot pink flowers in late spring, may rebloom in autumn

USPPAF, CPBRAf



Maroon Swoon®

Weigela x 'Slingco 2'

- Full sun
- Zones 4 to 7
- 4-5ft tall x wide
- Upright form
- Dark red flowers in late spring, may rebloom in autumn

USPP#26841, CPBR#5267



Tuxedo™

Weigela x 'Velda'

- Full sun
- Zones 4 to 7
- 4-5ft tall x wide
- Upright form
- White flowers in late spring, may rebloom in autumn

USPP#26842, CPBR#5268



24
PUFFER FISH®
HYDRANGEA PANICULATA



23
LITTLE LIME PUNCH®
HYDRANGEA PANICULATA



25
TUFF STUFF TOP FUN™
HYDRANGEA SERRATA



2024
NEW
RELEASES



24
TINY QUICK FIRE®
HYDRANGEA PANICULATA



23
LET'S DANCE LOVABLE™
HYDRANGEA MACROPHYLLA



26
DOUBLE PLAY® DOLLY™
SPIRAEA X



22
LET'S DANCE SKY VIEW®
HYDRANGEA MACROPHYLLA

Aronia / Chokeberry



Low Scape Mound®

Aronia melanocarpa
'UCONNAM165'

- Full to part sun
- Zones 3 to 9
- 1-2ft tall x wide
- Mounding form
- White-pink flowers in spring through autumn

USPP#28789, CPBRAf



Pugster Blue®

Buddleia x 'SMNBDBT'

- Full sun
- Zones 5 to 9
- 2-3ft tall x wide
- Mounding form
- Blue-purple flowers from summer through autumn

USPP#28794, CPBRAf

Buddleia / Butterfly Bush



Miss Molly

Buddleia x 'Miss Molly'

- Full sun
- Zones 5 to 9
- 4-5ft tall x wide
- Upright, arching form
- Magenta pink flowers in summer

USPP#23425, CPBR#4446



Pugster Pinker™

Buddleia x 'SMNBDBT'

- Full sun
- Zones 5 to 9
- 2ft tall x 2-3ft wide
- Mounding form
- Pink flowers from summer through autumn

USPPAF, CPBRAf



Miss Ruby

Buddleia x 'Miss Ruby'

- Full sun
- Zones 5 to 9
- 4-5ft tall x wide
- Upright, arching form
- Dark pink flowers in summer

USPP#19950, CPBR#3603

Caryopteris / Bluebeard



Beyond Pink'd™

Caryopteris incana
'DCARBEYBAR'

- Full sun
- Zones 7 to 9
- 2-3ft tall x wide
- Mounding form
- Bright pink flowers in summer

USPPAF, CPBRAf



Pugster® Amethyst

Buddleia x 'SMNBDL'

- Full sun
- Zones 5 to 9
- 2ft tall x wide
- Mounding form
- Purple-blue flowers from summer through autumn

USPP#30236, CPBRAf

Cornus / Dogwood



Arctic Fire® Red

Cornus stolonifera 'Farrow'

- Full to part sun
- Zones 2 to 7
- 3-5ft tall x wide
- Upright form

USPP#18523

Deutzia



Yuki Cherry Blossom®

Deutzia 'NCDx2'

- Full sun
- Zones 5 to 8
- 1-2ft tall x wide
- Mounding form
- Pink flowers in spring through summer

USPP#28347, CPBR#5079



Invincibelle Limetta®

Hydrangea arborescens 'NCHA8'

- Part sun
- Zones 3 to 8
- 3-4ft tall x wide
- Mounding form
- White-green flowers from summer through autumn

USPP#30431, CPBR#6346



Yuki Snowflake®

Deutzia 'NCDx1'

- Full sun
- Zones 5 to 8
- 1-2ft tall x wide
- Mounding form
- White flowers in spring through summer

USPP#25916, CPBR#5078



Invincibelle® Ruby

Hydrangea arborescens 'NCHA3'

- Part sun
- Zones 3 to 8
- 3-4ft tall x 2-3ft wide
- Mounding form
- Red to pink flowers from summer through autumn

USPP#28317, CPBR#5623

Hydrangea arborescens / Smooth Hydrangea



Incrediball®

Hydrangea arborescens 'Abetwo'

- Part sun
- Zones 3 to 8
- 4-5ft tall x 5-6ft wide
- Mounding form
- White flowers from summer through autumn

USPP#20571, CPBR#4166



Invincibelle Sublime®

Hydrangea arborescens 'SMNHRL'

- Part sun
- Zones 3 to 9
- 3.5-5ft tall x wide
- Mounding form
- Green flowers from summer through autumn

USPPAF#34418, CPBRA



Incrediball® Blush

Hydrangea arborescens 'NCHA4'

- Part sun
- Zones 3 to 8
- 4-5ft tall x 5-6ft wide
- Mounding form
- Pink flowers from summer through autumn

USPP#28280, CPBR#5624

Hydrangea macrophylla / Bigleaf Hydrangea



NEW

Let's Dance Sky View®

Hydrangea macrophylla x serrata 'SMNHSME'

- Full to part sun
- Zones 4 to 9
- 2-3ft tall x 2-4ft wide
- Mounding form
- Blue (in acidic soil) or pink (in neutral soil) flowers from summer through autumn

USPP#34327, CPBRA



**Let's Dance®
Rhythmic Blue®**
Hydrangea macrophylla
'SMHMES14'

- Part sun
- Zones 5 to 9
- 3-4ft tall x wide
- Mounding form
- Blue (in acidic soil) or pink (in neutral soil) flowers rebloom from summer through autumn

USPP#25836, CPBR#5126



Fire Light Tidbit®
Hydrangea paniculata
'SMNHPK'

- Full to part sun
- Zones 3 to 8
- 2-3ft tall x 3ft wide
- Mounding form
- White aging to pink-red flowers from summer through autumn

USPP#32512, CPBRA



NEW

**Let's Dance
Loveable™**
Hydrangea macrophylla
'SMNHMTB'

- Full to part sun
- Zones 5 to 9
- 3-4ft tall x wide
- Mounding form
- Blue (in acidic soil) or pink (in neutral soil) flowers through summer

USPPAF, CPBRA



Limelight
Hydrangea paniculata
'Limelight'

- Full to part sun
- Zones 3 to 9
- 6-8ft tall x wide
- Upright form
- Lime green flowers from summer through autumn

USPP#12874, CPBR#2319

Hydrangea paniculata / Hardy Hydrangea



Bobo®
Hydrangea paniculata
'ILVOBO'

- Full to part sun
- Zones 3 to 8
- 3ft tall x 5ft wide
- Mounding form
- White flowers from summer through autumn

USPP#22782, CPBR#4910



Limelight Prime®
Hydrangea paniculata
'SMNHPPH'

- Full to part sun
- Zones 3 to 8
- 4-6ft tall x 4-5ft wide
- Upright form
- Lime green flowers in summer turning pink and red in autumn

USPP#32511, CPBRA



Fire Light®
Hydrangea paniculata
'SMHPFL'

- Full to part sun
- Zones 3 to 8
- 6-8ft tall x wide
- Upright form
- Cream summer flowers turn pink-red in autumn

USPP#25135, CPBR#5160



NEW

Little Lime Punch®
Hydrangea paniculata
'SMNHPPH'

- Full to part sun
- Zones 3 to 8
- 3-5ft tall x wide
- Mounding form
- Lime green summer flowers turn red in autumn

USPP#33207, CPBRA

Hydrangea paniculata / Hardy Hydrangea



Little Lime®
Hydrangea paniculata 'Jane'
 ▪ Full to part sun
 ▪ Zones 3 to 8
 ▪ 3-5ft tall x 3-5ft wide
 ▪ Upright form
 ▪ Lime green flowers from summer through autumn
 USPP#22330, CPBR#3914



Quick Fire Fab®
Hydrangea paniculata 'SMNHMPM'
 ▪ Full to part sun
 ▪ Zones 3 to 8
 ▪ 6-8ft tall x 5-6ft wide
 ▪ Upright form
 ▪ White aging to pink-red flowers from summer through autumn
 USPP#32513, CPBRAFF



Little Quick Fire®
Hydrangea paniculata 'SMHPLQF'
 ▪ Full to part sun
 ▪ Zones 3 to 8
 ▪ 3-5ft tall x wide
 ▪ Upright form
 ▪ Cream summer flowers turn pink-red in autumn
 USPP#25136, CPBR#5406



NEW

Tiny Quick Fire®
Hydrangea paniculata 'SMNHPSB'
 ▪ Full to part sun
 ▪ Zones 3 to 8
 ▪ 1.5-3ft tall x 2-3ft wide
 ▪ Upright form
 ▪ White flowers turn pink in later summer
 USPP#34468, CPBRAFF



Pinky Winky®
Hydrangea paniculata 'DVPpinky'
 ▪ Full to part sun
 ▪ Zones 3 to 8
 ▪ 6-8ft tall x 5ft wide
 ▪ Upright form
 ▪ Cream summer flowers turn pink in autumn
 USPP#16166, CPBR#2889

Hydrangea serrata / Mountain Hydrangea



Let's Dance Can Do!™
Hydrangea serrata 'SMNHSI'
 ▪ Full to part sun
 ▪ Zones 4 to 9
 ▪ 4ft tall x 3ft wide
 ▪ Mounding form
 ▪ Blue (in acidic soil) or pink (in neutral soil) flowers from summer through autumn
 USPPAF, CPBRAFF



NEW

Puffer Fish®
Hydrangea paniculata 'NCHP1'
 ▪ Full to part sun
 ▪ Zones 3 to 8
 ▪ 3-5ft tall x wide
 ▪ Mounding form
 ▪ White summer flowers have a green tint in autumn
 USPPAF, CPBRAFF



Tiny Tuff Stuff™
Hydrangea serrata 'MAKD'
 ▪ Full to part sun
 ▪ Zones 5 to 9
 ▪ 1-2ft tall x 2ft wide
 ▪ Mounding form
 ▪ Blue (in acidic soil) or pink (in neutral soil) flowers from summer through autumn
 USPP#24842, CPBR#5125



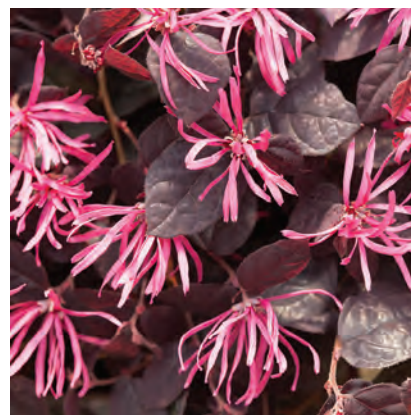
NEW

Tuff Stuff Top Fun™
Hydrangea serrata 'SMNHSG'

- Full to part sun
- Zones 4 to 9
- 2-3ft tall x wide
- Mounding form
- Blue (in acidic soil) or pink (in neutral soil) flowers from summer through summer

USPP#35034, Can PBRAF

Loropetalum / Chinese Fringe-Flower



Jazz Hands® Dwarf Pink
Loropetalum chinense 'Kurenai'

- Full to part sun
- Zones 7 to 9
- 1-3ft tall x wide
- Mounding form
- Hot pink flowers in spring through summer

USPP#27750



Tuff Stuff™
Hydrangea serrata 'MAK20'

- Full to part sun
- Zones 5 to 9
- 2-3ft tall x wide
- Mounding form
- Blue (in acidic soil) or pink (in neutral soil) flowers from summer through autumn

USPP#24820, CPBR#4527

Physocarpus / Ninebark



Ginger Wine®
Physocarpus opulifolius 'SMNPOBLR'

- Full sun
- Zones 3 to 7
- 5-6ft tall x wide
- Upright form
- Pink-white flowers in summer

USPP#28695, CPBRAF

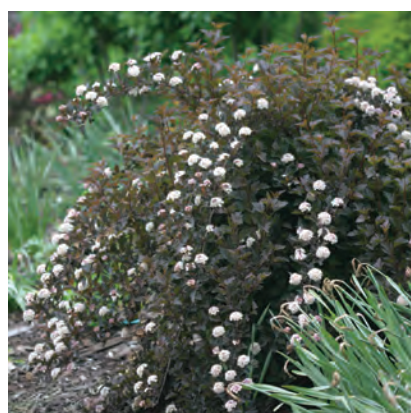
Hydrangea x



Fairytrail Bride®
Hydrangea x 'USHYD0405'

- Full to part sun
- Zones 7 to 9
- 4ft tall x wide
- Trailing form
- White blooms all summer

USPP#31120, CPBRAF



Summer Wine®
Physocarpus opulifolius 'Seward'

- Full sun
- Zones 3 to 7
- 5-8ft tall x wide
- Cascading form
- White flowers in mid to late spring

USPP#14821, CPBR#2641

Itea / Sweetspire



Little Henry®
Itea virginica 'Sprich'

- Full to part sun
- Zones 5 to 9
- 2-3ft tall x wide
- Mounding form
- White flowers in summer

USPP#10988



Tiny Wine®
Physocarpus opulifolius 'SMPOTW'

- Full sun
- Zones 3 to 7
- 3-5ft tall x 3-4ft wide
- Upright form
- Pink-white flowers in summer

USPP#26749, CPBR#5128

Sambucus / Elderberry



Black Lace®

Sambucus nigra 'Eva'

- Full to part sun
- Zones 4 to 7
- 6-8ft tall x wide
- Upright form
- White-pink flowers in summer

USPP#15575, CPBR#2633



Double Play® Gold

Spiraea japonica 'Yan'

- Full to part sun
- Zones 3 to 8
- 1-2ft tall x wide
- Mounding form
- Pink flowers in summer

USPP#21615, CPBR#4074

Spiraea / Spirea



Glow Girl®

Spiraea betulifolia 'Tor Gold'

- Full to part sun
- Zones 3 to 9
- 3-4ft tall x wide
- Mounding form
- White flowers in mid to late spring

CPBR#5121



Double Play® Red

Spiraea japonica 'SMNSJMFR'

- Full to part sun
- Zones 3 to 8
- 2-3ft tall x wide
- Mounding form
- Red flowers in summer

USPP#26993, CPBR#5633



Double Play® Candy Corn®

Spiraea japonica 'NCSX1'

- Full to part sun
- Zones 4 to 8
- 2ft tall x 2-3ft wide
- Mounding form
- Dark purple flowers in summer

USPP#28313, CPBR#6176



Double Play® Big Bang®

Spiraea x 'Tracy'

- Full to part sun
- Zones 3 to 8
- 2-3ft tall x wide
- Mounding form
- Pink flowers in summer

USPP#21588, CPBR#4073



NEW

Double Play® Dolly™

Spiraea x 'SMNSJSA'

- Full to part sun
- Zones 3 to 8
- 1.5-2.5ft tall x wide
- Mounding form
- Purple flowers from spring through summer

USPP#35032, CPBRAFF



Double Play® Doozie®

Spiraea x 'NCSX2'

- Full to part sun
- Zones 3 to 8
- 2ft tall x 3ft wide
- Mounding form
- Rich magenta flowers cover the plant in late spring and summer

USPP#30953, CPBRAFF

Syringa / Lilac



Bloomerang® Dark Purple

Syringa x 'SMSJBPB'

- Full sun
- Zones 3 to 7
- 4-6ft tall x wide
- Mounding form
- Purple flowers in spring, may rebloom in summer

USPP#26549, CPBR#5076



Spilled Wine®

Weigela florida 'Bokraspiwi'

- Full sun
- Zones 4 to 8
- 2-3ft tall x wide
- Mounding, spreading form
- Hot pink flowers in late spring

USPP#23781, CPBR#4655

Weigela

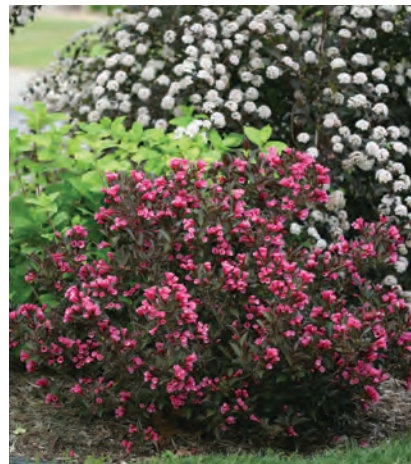


My Monet Purple Effect®

Weigela florida 'Verweig8'

- Full to part sun
- Zones 4 to 6
- 1-3ft tall x wide
- Mounding form
- Pink flowers in late spring

USPPAF, CPBRAf



Wine & Roses®

Weigela florida 'Alexandra'

- Full sun
- Zones 4 to 8
- 4-5ft tall x wide
- Mounding form
- Pink flowers in late spring

USPP#10772, CPBR#2642

Double Play® Candy Corn®





Non-Branded Shrubs

Abelia



Kaleidoscope

Abelia x grandiflora
'Kaleidoscope'

- Full to part sun
- Zones 6 to 9
- 2-3ft tall x 3-4ft wide
- Mounding form
- White flowers from summer through autumn

USPP#16988 PlantHaven
photo courtesy PlantHaven



Pink Pong® Abelia

Abelia x grandiflora
'ABENOV41'

- Full to part sun
- Zones 6 to 9
- 4-5ft tall x 4ft wide
- Mounding form
- Violet-pink flowers from spring through autumn

USPP27328, CPBRAAF



Radiance

Abelia x grandiflora
'Radiance'

- Full to part sun
- Zones 6 to 9
- 2-3ft tall x 3-4ft wide
- Mounding form
- White flowers from summer through autumn

USPP#21929 PlantHaven
photo courtesy PlantHaven

Berberis / Barberry



Rose Glow

Berberis thunbergii
'Rose Glow'

- Full sun
- Zones 3 to 8
- 3-4ft tall x wide
- Mounding form
- Yellow flowers in spring



Ruby Carousel®

Berberis thunbergii 'Bailone'

- Full sun
- Zones 3 to 9
- 3ft tall x wide
- Mounding form



Sunsation®

Berberis thunbergii 'Monry'

- Full to part sun
- Zones 3 to 8
- 4ft tall x wide
- Mounding form
- Yellow flowers in spring

USPP#11332

Buddleia / Butterfly Bush



Black Knight

Buddleia davidii 'Black Knight'

- Full sun
- Zones 5 to 9
- 10ft tall x wide
- Upright, arching form
- Dark purple flowers in summer

Clethra / Summersweet



Hummingbird

Clethra alnifolia 'Hummingbird'

- Full to part sun
- Zones 4 to 9
- 4ft tall x 3-4ft wide
- Mounding form
- White flowers from mid-summer to early autumn

Campsis / Trumpet Vine



Flamenco

Campsis radicans 'Flamenco'

- Full sun
- Zones 4 to 9
- 25ft tall x 5-10ft wide
- Vine
- Orange, red flowers from mid-summer to early autumn



Ruby Spice

Clethra alnifolia 'Ruby Spice'

- Full to part sun
- Zones 4 to 9
- 4-5ft tall x wide
- Mounding form
- Pink flowers in summer

Caryopteris / Bluebeard



Dark Knight

Caryopteris x clandonensis 'Dark Knight'

- Full sun
- Zones 5 to 9
- 3ft tall x 5ft wide
- Mounding form
- Dark blue flowers from mid-summer to early autumn



Sixteen Candles

Clethra alnifolia 'Sixteen Candles'

- Full to part sun
- Zones 4 to 9
- 4-5ft tall x 2-3ft wide
- Mounding form
- White flowers from mid-summer to early autumn

Clematis



Sweet Autumn

Clematis maximowicziana

- Full to part sun
- Zones 3 to 9
- 20ft tall x 5-10ft wide
- Vine
- White flowers in mid-summer to early autumn



Summer Sparkler

Clethra alnifolia 'Novaclein'

- Full sun
- Zones 4 to 9
- 3-4ft tall x wide
- Mounding form
- White flowers from mid-summer to early autumn

USPP#27590
Star® Roses & Plants
photo courtesy Star® Roses & Plants

Cornus / Dogwood



Bailey's Red Twig

Cornus sericea 'Baileyi'

- Part sun
- Zones 2 to 8
- 8-10ft tall x wide
- Upright form
- White flowers in mid-spring to early summer



Little Rebel®

Cornus alba 'Jefreb'

- Full to part sun
- Zones 2 to 7
- 3-4ft tall x wide
- Upright form
- White flowers in mid-spring to early summer

USPP#27402, CPBR#4851



Elegantissima

Cornus alba 'Elegantissima'

- Full to part sun
- Zones 3 to 8
- 6-7ft tall x wide
- Upright form
- White flowers in mid-spring to early summer

Daphne



Eternal Fragrance

Daphne 'Blafra'

- Full sun
- Zones 6 to 9
- 2-3ft tall x wide
- Mounding form
- White-pink flowers in spring through autumn

USPP#18361 PlantHaven
photo courtesy PlantHaven



Ivory Halo®

Cornus alba 'Baihalo'

- Full to part sun
- Zones 3 to 7
- 4-5ft tall x wide
- Upright form
- White flowers in mid-spring to early summer

USPP#8722

Diervilla / Bush Honeysuckle



Bush Honeysuckle

Diervilla lonicera

- Part sun
- Zones 3 to 8
- 4ft tall x 3-4ft wide
- Mounding form
- Yellow flowers in summer



Kelsey's Dwarf

Cornus sericea 'Kelseyi'

- Full to part sun
- Zones 3 to 8
- 2-3ft tall x wide
- Mounding form
- White flowers in mid-spring to early summer

Euonymus / Burning Bush



Compacta

Euonymus alatus 'Compacta'

- Full sun
- Zones 4 to 8
- 5-7ft tall x wide
- Upright form

Goji Berry



Firecracker™

Lycium barbarum 'Firecracker'

- Full to part sun
- Zones 3 to 8
- 4-5ft tall x 5-6ft wide
- Upright, arching form
- Bears fruit in late summer; fruiting begins in the 2nd year, with maximum fruit production by the 4th or 5th year

Forsythia



Magical® Gold

Forsythia x intermedia 'Kolgold'

- Full sun
- Zones 5 to 8
- 3-4ft tall x wide
- Upright form
- Yellow flowers in early to mid-spring

USPPAF
Plants Nouveau

Hydrangea petiolaris / Climbing Hydrangea



Climbing Hydrangea

Hydrangea anomala petiolaris

- Full to part sun
- Zones 4 to 8
- 15-30ft tall x 5-10ft wide
- Vine
- White flowers in early to mid-summer

Fothergilla / Witch Alder



Dwarf Fothergilla

Fothergilla gardenii

- Full to part sun
- Zones 4 to 9
- 3-4ft tall x wide
- Mounding form
- White flowers in mid to late spring

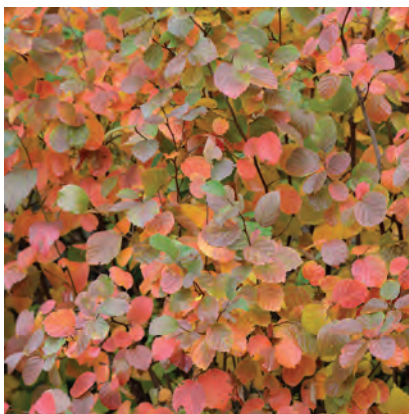
Hydrangea arborescens / Smooth Hydrangea



Annabelle

Hydrangea arborescens 'Annabelle'

- Part sun
- Zones 3 to 9
- 4-5ft tall x wide
- Mounding form
- White flowers in summer



Fothergilla x Mount Airy

Fothergilla major 'Mount Airy'

- Full to part sun
- Zones 4 to 9
- 6ft tall x 4ft wide
- Mounding form
- White flowers in early spring

Hydrangea macrophylla / Bigleaf Hydrangea



All Summer Beauty

Hydrangea macrophylla
'All Summer Beauty'

- Part sun
- Zones 5 to 9
- 5-6ft tall x wide
- Mounding form
- Blue (in acidic soil) or pink (in neutral soil) flowers from spring through autumn



Magical® Amethyst

Hydrangea macrophylla
'Hokomathyst'

- Part sun
- Zones 5 to 9
- 3ft tall x wide
- Mounding form
- Blue (in acidic soil) or pink (in neutral soil) flowers from spring through autumn

USPP#22261
Plants Nouveau



Elizabeth Ashley

Hydrangea macrophylla
'Hokomarore'

- Part sun
- Zones 5 to 9
- 3ft tall x wide
- Mounding form
- Blue (in acidic soil) or pink (in neutral soil) flowers from mid spring to autumn

USPP#31264
Plants Nouveau



Magical® Bride

Hydrangea macrophylla
'Hortmabrid'

- Part sun
- Zones 5 to 9
- 3-4ft tall x wide
- Mounding form
- White flowers from spring through autumn

USPP#25579
Plants Nouveau



Forever Pink

Hydrangea macrophylla
'Forever Pink'

- Part sun
- Zones 5 to 9
- 4ft tall x wide
- Mounding form
- Blue (in acidic soil) or pink (in neutral soil) flowers from spring through autumn



Magical® Crimson

Hydrangea macrophylla
'Hortmagicri'

- Part sun
- Zones 5 to 9
- 3ft tall x wide
- Mounding form
- Cherry red flowers from spring through autumn

USPPAF
Plants Nouveau



Glowing Embers

Hydrangea macrophylla
'Alpenglow'

- Part sun
- Zones 5 to 9
- 4-5ft tall x wide
- Mounding form
- Red flowers from spring through autumn



Magical® Revolution

Hydrangea macrophylla
'Hokomarevo'

- Part sun
- Zones 5 to 9
- 2-3ft tall x wide
- Mounding form
- Blue (in acidic soil) or pink (in neutral soil) flowers from spring through autumn

USPP#22260
Plants Nouveau



Nikko Blue

Hydrangea macrophylla
'Nikko Blue'

- Full to part sun
- Zones 5 to 9
- 4ft tall x 4-5ft wide
- Mounding form
- Blue (in acidic soil) or pink (in neutral soil) flowers from spring through autumn



Teller's Blue

Hydrangea macrophylla
'Teller's Blue'

- Part sun
- Zones 5 to 9
- 6-8ft tall x wide
- Mounding form
- Blue (in acidic soil) or pink (in neutral soil) flowers from spring through autumn



Penny Mac

Hydrangea macrophylla
'Penny Mac'

- Part sun
- Zones 5 to 9
- 3-4ft tall x wide
- Mounding form
- Blue (in acidic soil) or pink (in neutral soil) flowers from spring through autumn



Wedding Gown

Hydrangea macrophylla
'Dancing Snow'

- Part sun
- Zones 5 to 9
- 2-3ft tall x 3-5ft wide
- Mounding form
- White flowers from spring through autumn

USPP#21052
Star® Roses & Plants

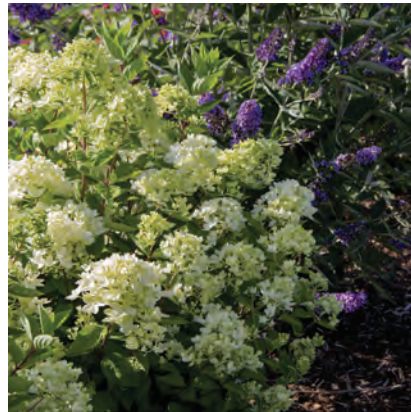


Princess Beatrix

Hydrangea macrophylla
'Princess Beatrix'

- Part sun
- Zones 5 to 9
- 4ft tall x 3-4ft wide
- Mounding form
- Blue (in acidic soil) or pink (in neutral soil) flowers from spring through autumn

Hydrangea paniculata / Hardy Hydrangea



Bombshell

Hydrangea paniculata
'Bombshell'

- Full to part sun
- Zones 3 to 8
- 2-3ft tall x 3-4ft wide
- Mounding form
- White flowers from summer through autumn

USPP#21008
Star® Roses & Plants



Red Sensation

Hydrangea macrophylla 'Red Sensation'

- Part sun
- Zones 5 to 9
- 3-4ft tall x wide
- Mounding form
- Red flowers from spring through autumn

USPP#18197



Fire and Ice

Hydrangea paniculata
'Wim's Red'

- Full to part sun
- Zones 3 to 8
- 6-10ft tall x wide
- Upright form
- White, turning red in fall flowers from summer through autumn

USPP#26005
Star® Roses & Plants

Hydrangea paniculata / Hardy Hydrangea



Bloomchampion® Fresh White™

Hydrangea paniculata
'HYLV02'

- Full to part sun
- Zones 3 to 8
- 1-2ft tall x wide
- Upright form
- White/lime flowers from summer through autumn

USPPAF, CPBRAAF



Phantom

Hydrangea paniculata
'Phantom'

- Full to part sun
- Zones 3 to 8
- 6ft tall x wide
- Upright form
- White aging to pink flowers from summer through autumn

Hydrangea paniculata / Hardy Hydrangea



Sweet Summer

Hydrangea paniculata
'Bokrathirteen'

- Full to part sun
- Zones 3 to 8
- 4-5ft tall x 4-6ft wide
- Upright form
- White-green to pink flowers from summer through autumn

USPP#22178
Star® Roses & Plants

Hydrangea quercifolia / Oakleaf Hydrangea



Munchkin

Hydrangea quercifolia
'Munchkin'

- Part sun
- Zones 5 to 9
- 3ft tall x wide
- Mounding form
- White aging to pink flowers from summer through autumn



Pee Wee

Hydrangea quercifolia 'Pee Wee'

- Part sun
- Zones 5 to 9
- 3-4ft tall x wide
- Mounding form
- White aging to pink flowers from summer through autumn



Ruby Slippers

Hydrangea quercifolia
'Ruby Slippers'

- Part sun
- Zones 5 to 9
- 3-4ft tall x 4-5ft wide
- Mounding form
- White aging to pink-red flowers from summer through autumn



Sikes Dwarf

Hydrangea quercifolia
'Sikes Dwarf'

- Part sun
- Zones 5 to 9
- 3-4ft tall x wide
- Mounding form
- White aging to pink flowers from summer through autumn



Hypericum / St. John's Wort



- Magical®
Midnight Glow**
Hypericum 'Magical Midnight Glow'
- Full to part sun
 - Zones 5 to 9
 - 2-3ft tall x wide
 - Mounding form
 - Yellow flowers in summer
- USPP#26242
Plants Nouveau

Ilex / Holly



- Lucky Marble™**
Ilex crenata 'Glorie Dwarf'
- Full to part sun
 - Zones 5 to 8
 - 3-4ft tall x wide
 - Rounded form
- USPP#30068, CPBRAAF

Itea / Sweetspire



- Henry's Garnet**
Itea virginica 'Henry's Garnet'
- Full to part sun
 - Zones 5 to 9
 - 5-6ft tall x wide
 - Mounding form
 - Slender and fragrant white flowers in early summer



- Merlot**
Itea virginica 'Merlot'
- Full to part sun
 - Zones 5 to 9
 - 3ft tall x 4ft wide
 - Mounding form
 - White flowers in summer

Lonicera / Honeysuckle Vine



- Goldflame**
Lonicera x heckrottii 'Goldflame'
- Full to part sun
 - Zones 4 to 9
 - 10-15ft tall x 5-10ft wide
 - Vine
 - Red with yellow throat flowers from summer through autumn



- Mandarin**
Lonicera x 'Mandarin'
- Full to part sun
 - Zones 3 to 9
 - 10-15ft tall x 5-10ft wide
 - Vine
 - Orange flowers from summer through autumn
- USPP#11083



- Peaches and Cream**
Lonicera periclymenum 'Inov 86'
- Full to part sun
 - Zones 4 to 9
 - 5-6ft tall x 1-3ft wide
 - Vine
 - Pink-yellow flowers in mid to late summer
- USPP#21839

Myrica / Northern Bayberry



- Myrica**
Myrica pensylvanica
- Full to part sun
 - Zones 3 to 9
 - 7-9ft tall x wide
 - Mounding form

Parthenocissus / Virginia Creeper



Veitchii

Parthenocissus tricuspidata
'Veitchii'

- Part sun
- Zones 4 to 10
- 50ft tall x 5-10ft wide
- Vine



Raspberry Lemonade™

Physocarpus opulifolius
'ZLEyel2'

- Full sun
- Zones 3 to 7
- 4ft tall x wide
- Mounding form
- White flowers in spring

USPPAF, CPBRA
Plants Nouveau
photo courtesy Plants Nouveau

Philadelphus / Mockorange



Snowbelle

Philadelphus virginialis
'Snowbelle'

- Full to part sun
- Zones 4 to 7
- 4-6ft tall x 4ft wide
- Mounding form
- Double, white flowers in mid to late spring



Sweet Cherry Tea™

Physocarpus opulifolius
'ZLEBic5'

- Full sun
- Zones 3 to 7
- 3-4ft tall x wide
- Mounding form
- Pink flowers in spring

USPP#31235, CPBRA
Plants Nouveau
photo courtesy Plants Nouveau

Physocarpus / Ninebark



Dart's Gold

Physocarpus opulifolius
'Dart's Gold'

- Full to part sun
- Zones 3 to 7
- 5ft tall x wide
- Upright form
- White flowers in mid to late spring

Potentilla / Cinquefoil



Abbotswood

Potentilla fruticosa
'Abbotswood'

- Full sun
- Zones 2 to 7
- 3ft tall x wide
- Mounding form
- White flowers in spring through autumn



Diabolo®

Physocarpus opulifolius
'Monlo'

- Full sun
- Zones 3 to 7
- 8ft tall x 6ft wide
- Upright form
- White flowers in mid to late spring

USPP#11211



Goldfinger

Potentilla fruticosa
'Goldfinger'

- Full sun
- Zones 2 to 7
- 3ft tall x 4ft wide
- Mounding form
- Yellow flowers in summer



Goldstar

Potentilla fruticosa 'Goldstar'

- Full sun
- Zones 2 to 7
- 2-3ft tall x 3ft wide
- Mounding form
- Yellow flowers in summer

Rhus aromatica / Fragrant Sumac



Gro-Low

Rhus aromatica 'Gro-Low'

- Full to part sun
- Zones 3 to 9
- 2-3ft tall x 6-8ft wide
- Spreading form



Lacette™

Rhus aromatica 'Fine Textured Compact Select A'

- Full sun
- Zones 3 to 8
- 3-5ft tall x 6-7ft wide
- Mounding form

USPP#28669, CPBRA
Plants Nouveau
photo courtesy Plants Nouveau

Ribes



Alpine Currant

Ribes alpinum

- Full to part sun
- Zones 2 to 7
- 5ft tall x wide
- Mounding form
- White flowers in summer

Salix / Willow



Flamingo

Salix integra 'Flamingo'

- Full to part sun
- Zones 3 to 10
- 5-7ft tall x wide
- Mounding form

USPP#17490



Hakuro-Nishiki

Salix integra 'Hakuro-Nishiki'

- Full to part sun
- Zones 4 to 7
- 5-7ft tall x wide
- Mounding form

Sambucus / Elderberry



Golden Tower™

Sambucus nigra 'Jandeboer 001'

- Full to part sun
- Zones 4 to 8
- 10ft tall x 4 ft wide
- Upright form
- White flowers in spring

USPP#28957

Sorbaria / False Spirea



Sem

Sorbaria sorbifolia 'Sem'

- Full to part sun
- Zones 2 to 11
- 3-4ft tall x wide
- Mounding form
- White flowers in early to mid-summer

USPP#16336
Star® Roses & Plants



Magic Carpet®

Spiraea japonica
'Magic Carpet'

- Full to part sun
- Zones 3 to 8
- 2-3ft tall x wide
- Mounding form
- Rose pink flowers in summer

USPP#9363

Spiraea / Spirea



Tor Birchleaf

Spiraea betulifolia 'Tor'

- Full to part sun
- Zones 3 to 9
- 3-5ft tall x wide
- Mounding form
- White flowers in mid to late spring



Neon Flash

Spiraea japonica Neon Flash

- Full to part sun
- Zones 3 to 8
- 3ft tall x wide
- Mounding form
- Red flowers in summer



Goldmound

Spiraea japonica Goldmound

- Full to part sun
- Zones 3 to 8
- 2-3ft tall x 3ft wide
- Mounding form
- Pink flowers in summer



Snowmound

Spiraea nipponicum
'Snowmound'

- Full to part sun
- Zones 3 to 8
- 3ft tall x wide
- Mounding form
- White flowers in summer



Little Princess

Spiraea japonica
'Little Princess'

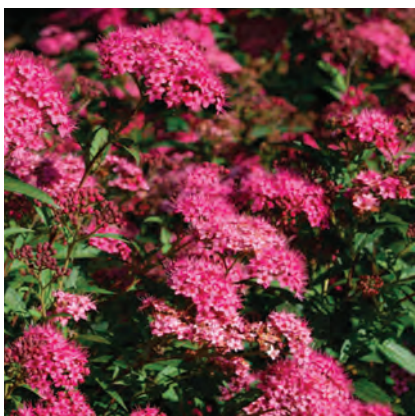
- Full to part sun
- Zones 3 to 8
- 3-4ft tall x 4-5ft wide
- Mounding form
- Rose pink flowers in summer



Mellow Yellow

Spiraea thunbergii 'Ogon'

- Full to part sun
- Zones 4 to 8
- 3-5ft tall x wide
- Mounding form
- White flowers in spring



Anthony Waterer

Spiraea x bumalda
Anthony Waterer

- Full to part sun
- Zones 3 to 8
- 3-5ft tall x wide
- Mounding form
- Red-pink flowers in early summer, may rebloom in autumn



Mr. Bowling Ball®

Thuja occidentalis 'Bobozam'

- Full sun
- Zones 3 to 8
- 1-2ft tall and wide
- Rounded form



Bridal Wreath

Spiraea x vanhouttei

- Full to part sun
- Zones 3 to 8
- 6ft tall x wide
- Mounding form
- White flowers in early to mid-summer

Viburnum



Dwarf European Cranberrybush

Viburnum opulus 'Nanum'

- Full to part sun
- Zones 3 to 8
- 2-3ft tall x wide
- Mounding form
- White to pink flowers in early to mid-spring

Syringa / Lilac



Dwarf Korean

Syringa meyeri 'Palibin'

- Full sun
- Zones 3 to 7
- 4-5ft tall x 5-7ft wide
- Mounding form
- Lavender flowers in early to mid-spring



Snowball Bush

Viburnum opulus 'Sterile'

- Full to part sun
- Zones 3 to 8
- 6-8ft tall x 4-6ft wide
- Upright form
- White flowers in early to mid-summer

Thuja / Cedar / Arborvitae



Fire Chief™

Thuja occidentalis 'Congabe'

- Full sun
- Zones 5 to 8
- 4ft tall x wide
- Mounding form

USPP#19009



Summer Snowflake

Viburnum plicatum 'Summer Snowflake'

- Full to part sun
- Zones 5 to 8
- 4-6ft tall x wide
- Mounding form
- White flowers in summer

Weigela



Minuet

Weigela florida
'Minuet'

- Full to part sun
- Zones 4 to 8
- 2-3ft tall x wide
- Mounding form
- Pink flowers in late spring

Wisteria



Amethyst Falls

Wisteria frutescens
'Amethyst Falls'

- Full to part sun
- Zones 5 to 9
- 30ft tall x 2ft wide
- Vine
- Lavender flower clusters from mid spring to summer



Blue Moon

Wisteria macrostachya
'Blue Moon'

- Full sun
- Zones 4 to 9
- 25ft tall x 5-10ft wide
- Vine
- Lilac-purple flowers in spring, may rebloom in summer

Ordering FAQ

How can I receive a current availability?

Please email or call your account representative for an availability with pricing. We can set you up to receive automatic availabilities on a schedule that works for you.

What does your pricing include?

Pricing includes boxing, all royalty and marketing fees, and any required tags for licensed plants, unless otherwise noted.

As a Youngplants customer, do I order any required pots and/or tags from Van Belle?

Yes—for Proven Winners® ColorChoice® and Bloomin' Easy®, you need to place your pot order with us at the time of ordering your plants. Picture tags are included at no additional charge and will ship with your order.

Can I order customized tags?

You may order customized tags through the Van Belle Print Shop which specializes in on-demand full-color tags. Due to heavy demand during spring, we recommend placing your orders between July and February at least three weeks before you need tags in hand. Contact your account manager for more information and current pricing.

How does the shipping process work?

We ship all product on pallets, and the cost of shipping is not included in the plant price. If we are able to include the shipping costs on your main plant order invoice, we will. Otherwise, shipping costs will be charged on a separate invoice after your plants have shipped.

Am I able to get payment terms?

If you are a first-time customer for Van Belle, your account representative will provide you with a credit application. Typically, first-time customers pay by check prior to delivery.

Can I tour your facility?

Of course! Contact your rep for the best time to tour—we'd love to host you. See our website, vanbelle.com, to learn more about us.

ORDER NOW

Download the latest order form by scanning the code





GRIN & TONIC™

By bloomin' easy

Elegant yet strong—you'll want to sip on this beauty all season long! Like a favorite summertime drink, **Grin and Tonic™** Reblooming Hydrangea is bright and lively. The blooms emerge lime green and mature to a refreshing bright white with improved sun tolerance.

2-3ft tall x wide • Zones 5-9 • Part sun

Hydrangea macrophylla 'Hokomagrito' USPPAF, CPBRA





Dragon Baby™

By bloomin' easy

Precious and powerful like a baby dragon, this improved Hardy Hydrangea delivers extraordinary flower power in a petite form for modern outdoor spaces. Blooms start cream and lime before igniting to a rich pink as summer fades to fall.

2-3ft tall x wide • Zones 3-8 • Full to part sun



Hydrangea paniculata 'HYLV17522' USPPAF, CPBRAE