



Aalborg Universitet

AALBORG UNIVERSITY  
DENMARK

## Secretome of fungus-infected aphids documents high pathogen activity and weak host response

Grell, Morten Nedergaard; Jensen, Annette Bruun; Olsen, Peter Bjarke; Eilenberg, Jørgen; Lange, Lene

*Published in:*  
Fungal Genetics and Biology

*DOI (link to publication from Publisher):*  
[10.1016/j.fgb.2010.12.003](https://doi.org/10.1016/j.fgb.2010.12.003)

*Publication date:*  
2011

*Document Version*  
Publisher's PDF, also known as Version of record

[Link to publication from Aalborg University](#)

*Citation for published version (APA):*

Grell, M. N., Jensen, A. B., Olsen, P. B., Eilenberg, J., & Lange, L. (2011). Secretome of fungus-infected aphids documents high pathogen activity and weak host response. *Fungal Genetics and Biology*, 48(4), 343–352. <https://doi.org/10.1016/j.fgb.2010.12.003>

### General rights

Copyright and moral rights for the publications made accessible in the public portal are retained by the authors and/or other copyright owners and it is a condition of accessing publications that users recognise and abide by the legal requirements associated with these rights.

- Users may download and print one copy of any publication from the public portal for the purpose of private study or research.
- You may not further distribute the material or use it for any profit-making activity or commercial gain
- You may freely distribute the URL identifying the publication in the public portal -

### Take down policy

If you believe that this document breaches copyright please contact us at [vbn@aub.aau.dk](mailto:vbn@aub.aau.dk) providing details, and we will remove access to the work immediately and investigate your claim.



## Technological Advancement

## Secretome of fungus-infected aphids documents high pathogen activity and weak host response

Morten N. Grell<sup>a,\*</sup>, Annette B. Jensen<sup>b</sup>, Peter B. Olsen<sup>c</sup>, Jørgen Eilenberg<sup>b</sup>, Lene Lange<sup>a</sup><sup>a</sup> Department of Biotechnology and Chemistry, Section for Sustainable Biotechnology, Aalborg University, Laurrupvang 15, DK-2750 Ballerup, Denmark<sup>b</sup> Department of Agriculture and Ecology, University of Copenhagen, Thorvaldsensvej 40, DK-1871 Frederiksberg C, Denmark<sup>c</sup> Molecular Biotechnology, Novozymes A/S, Krogshøjvej 36, DK-2880 Bagsværd, Denmark

## ARTICLE INFO

## Article history:

Received 16 July 2010

Accepted 8 December 2010

Available online 13 December 2010

## Keywords:

Transposon assisted signal trapping

Secretome

Entomophthorales

Aphid

Host–pathogen interaction

Enzyme discovery

## ABSTRACT

The discovery of novel secretome proteins can add to our understanding of host–pathogen interactions. Here we report a rich diversity of secreted proteins from the interaction between grain aphids (host, insect order Hemiptera) and fungi of the order Entomophthorales (insect pathogens). The proteins were identified using a unique method unbiased by known sequences or functions to screen a cDNA library constructed directly from field-sampled material. We show for the first time that fungi from the genera *Pandora* and *Entomophthora* are armed with a battery of hydrolytic enzymes for penetrating the host cuticle. This enables both access to the hemolymph and exit for sporulation. Further, they secrete enzymes, most notably a number of lipases, for digestion of easily accessible high-energy compounds in the hemolymph. In contrast, we identified only few host genes potentially involved in the interaction, indicating that aphids respond only weakly to the pathogens. These results support recent findings that aphids have a reduced immune repertoire.

© 2010 Elsevier Inc. All rights reserved.

## 1. Introduction

Most species within the fungal order Entomophthorales (subphylum Entomophthoromycotina; Hibbett et al., 2007) are obligate pathogens of insects and arachnids (Jensen et al., 2006; Roy et al., 2006). Entomophthoralean fungi exhibit a highly specialized life cycle, including a parasitic growth phase in the host (Roy et al., 2006). Some species, like *Pandora neoaphidis* and *Entomophthora planchoniana*, form protoplast-like cells in the hemocoel (Butt et al., 1981; Freimoser et al., 2001), possibly to escape detection by the host immune system (Beauvais et al., 1989). After completion of the asexual life cycle, conidial spores are dispersed from the host to infect new susceptible individuals (Roy et al., 2006). Entomophthoralean fungi can cause epidemics in host populations, both in natural habitats and under crop conditions (Hesketh et al., 2010). This has led to the suggestion of using entomophthoralean species as biocontrol agents for pest insects, such as aphids (Hountondji, 2008; Jensen et al., 2008; Nielsen et al., 2005).

Although the life cycle of many entomophthoralean species is well known, a detailed molecular understanding of infection processes and host responses is still lacking. In this study, we describe for the first time the use of a unique method, Transposon Assisted

Signal Trapping (TAST) (Becker et al., 2004), on cDNA libraries from field-sampled, interacting hosts and pathogens. We used TAST to preferentially select full-length cDNAs encoding secreted proteins. Other advantages of TAST are that it can be used on organisms for which no genome sequence data are available. More importantly, genes are identified without the bias introduced by methods that rely on known gene sequences or functional assays, allowing the discovery of truly novel genes. In principle TAST is simple, with the entire process of library production, screening, and clone selection performed in a standard *Escherichia coli* laboratory strain. Previous results using TAST on eukaryotic cDNA libraries indicate that eukaryotic signal peptides are processed correctly in *E. coli* (Lange and Schnorr, 2004; Hamann and Lange, 2006). This is presumably due to the highly similar physicochemical properties of prokaryotic and eukaryotic N-terminal signal peptides (Paetzel et al., 2002).

Our hypothesis was that we could use TAST to discover new and unique proteins by studying interactions between insects and their pathogens, sampled directly from the field. These discoveries should improve our understanding of the biology of host–pathogen interactions for use in biological control methods, and possibly lead to the discovery of proteins with industrial potential. We confirm our hypothesis here, by reporting on several novel glycoside hydrolases, lipases, proteases, and other proteins secreted during interactions between grain aphids (*Sitobion avenae*) and the entomophthoralean fungi *E. planchoniana*, *P. neoaphidis*, and *Conidiobolus obscurus*, found by sequencing fewer than 600 TAST clones.

Abbreviations: TAST, Transposon assisted signal trapping.

\* Corresponding author. Fax: +45 9940 2594.

E-mail address: [mng@bio.aau.dk](mailto:mng@bio.aau.dk) (M.N. Grell).

## 2. Materials and methods

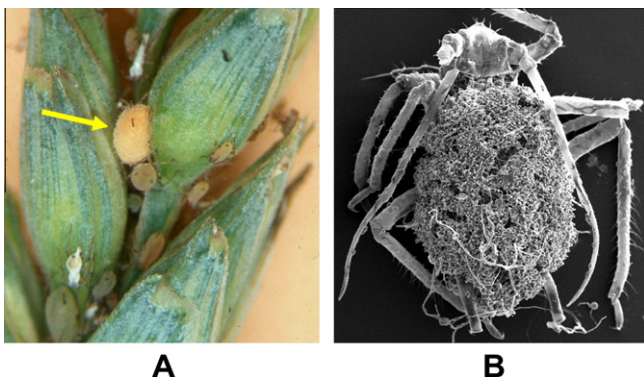
### 2.1. Biomass collection

An infestation of grain aphids (Fig. 1A and B) was followed during one growth season in a Danish organically grown winter wheat field to determine the appropriate time for sampling potentially infected individuals. Species composition was determined by weekly sampling and incubation of 100 live aphids until spore discharge allowed morphological examination, as described in Jensen et al. (2008). When fungal infection prevalence increased, thousands of live aphids were brought into the laboratory (Fig. 2, arrows). These aphids were inspected under a dissecting microscope in the afternoons and evenings for up to five days, and aphids showing signs of entomophthoralean infection were quickly frozen in liquid nitrogen and stored at  $-80^{\circ}\text{C}$  until RNA extraction. Individuals in three different stages of infection were pooled for library construction: (1) just before fungal hyphae penetrated the cuticle from the inside, a transition that can be assessed from the outside by swelling of the body and a color change to brown–orange–pink (Fig. 1A); (2) just after penetration; and (3) at the onset of fungal sporulation. The composite biomass for library production consisted of infected alate and apterous adult aphids (with and without wings) as well as infected nymphs.

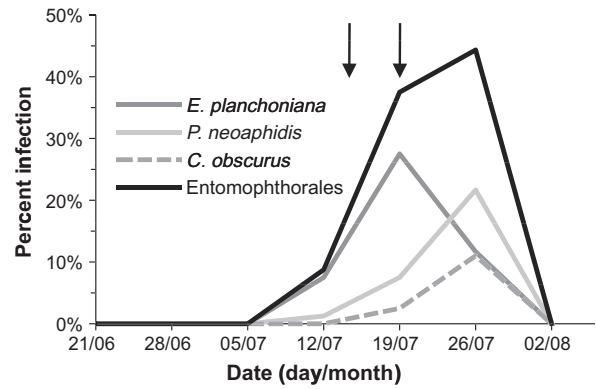
### 2.2. cDNA library construction

For extraction of total RNA, 100 mg composite biomass was homogenized under liquid nitrogen, suspended and incubated in 30 ml extraction buffer (4 M GuTCN, 0.5% w/v Na-lauroylsarcosine, 25 mM Na-citrate pH 7.0, 0.1 M  $\beta$ -mercaptoethanol) at  $65^{\circ}\text{C}$  for 15 min, followed by an additional incubation at room temperature for 30 min and centrifugation (17,000g for 20 min at  $4^{\circ}\text{C}$ ). The supernatant (26.5 ml) was mixed with 12 ml 5.7 M CsCl in a 40 ml Beckmann Ultra Clear tube and subjected to CsCl gradient centrifugation in a Beckmann ultracentrifuge (25,000 rpm for 24 h at room temperature). The resulting total RNA pellet was resuspended in 0.5 ml TE pH 7.5 and extracted with an equal volume of phenol:chloroform:isoamyl alcohol 25:24:1. After centrifugation at 12,000g for 2 min, the aqueous phase was extracted again with an equal volume of chloroform:isoamyl alcohol 24:1. Finally, RNA was concentrated by ethanol precipitation and resuspension in 100  $\mu\text{l}$  RNase-free water.

Poly(A) RNA was isolated from the total RNA preparation using the mTRAP Total Kit (Ambion) following the manufacturer's proce-



**Fig. 1.** Entomophthorales-infected grain aphids (*Sitobion avenae*). (A) Aphid colony on wheat head. Yellow arrow, infected adult with swollen body and orange color. Spores discharged from this individual may infect other colony members (photo: Tove Steenberg). (B) Scanning electron micrograph of an aphid killed by *Pandora neoaphidis*, with the body completely covered with hyphae (photo: José Bresciani and Anette J. Lauritzen).



**Fig. 2.** Prevalence of natural Entomophthorales infection in the grain aphid *S. avenae*. Infestation was monitored in an organically grown winter wheat field by weekly sampling and incubation of 100 live aphids until spore discharge for morphological examination (see Section 2.1). Three different entomophthoralean species were observed. Prevalence was scored as total Entomophthorales infected aphids (black line), and percentage infected with each of the three species. Vertical arrows indicate the dates of aphid collection for RNA extraction.

dures. The eluted mRNA was ethanol precipitated and resuspended in 10  $\mu\text{l}$  RNase-free water at an approximate concentration of 1  $\mu\text{g}/\mu\text{l}$ .

Double-stranded cDNA was synthesized with the SMART cDNA Library Construction Kit (Clontech). For first-strand synthesis, the Superscript II reverse transcriptase (Invitrogen) was used according to the SMART protocol. Second-strand synthesis was carried out as described in the SMART primer extension protocol, using the GeneAmp 2400/9600 compatible thermal cycler program. After purification on GFX spin columns (GE Healthcare), cDNA was prepared for cloning by *Sfi*I digestion, followed by agarose gel size selection of cDNAs larger than approximately 750 bp and GFX-gel band purification. The plasmid cDNA library vector pMHs7i (kindly provided by K. Schnorr, Novozymes) was digested with *Sfi*I and GFX-gel band purified. Vector and cDNA were concentrated by ethanol precipitation and resuspended in 20 and 50  $\mu\text{l}$  water, respectively. One tenth of the cDNA preparation was mixed with 50 ng vector, two units T4 DNA ligase, and supplied 10 $\times$  buffer (Promega) in a total volume of 10  $\mu\text{l}$  and ligation performed overnight at  $16^{\circ}\text{C}$ . Subsequently, ElectroMAX DH10B *E. coli* cells (Invitrogen) were transformed with the plasmid library by electroporation according to the manufacturer of the cells. Following transformation, the cells were diluted in 1 ml SOC medium, incubated at  $37^{\circ}\text{C}$ , 225 rpm for 1 h, and selected on LB agar plates containing 50  $\mu\text{g}/\text{ml}$  kanamycin at  $37^{\circ}\text{C}$ . Pooled plasmid DNA was isolated from approximately 30,000 colonies.

### 2.3. Signal trapping

For transposon tagging of the cDNA library, 1  $\mu\text{g}$  plasmid cDNA library was mixed with 50, 100, or 250 ng purified TnSig transposon (Becker et al., 2004) (pSigA4 kindly provided by K. Schnorr), 0.22  $\mu\text{g}$  MuA transposase, and 5 $\times$  MuA transposase reaction buffer (Finnzymes) in a total volume of 20  $\mu\text{l}$  and incubated at  $30^{\circ}\text{C}$  for 3 h, followed by inactivation of the transposase by incubation at  $75^{\circ}\text{C}$  for 10 min. Subsequently, the tagged library was ethanol precipitated and resuspended in 10  $\mu\text{l}$  Tris-HCl pH 8.0, and 2  $\mu\text{l}$  transformed into DH10B *E. coli* cells (as above). For controls, aliquots were plated on LB kanamycin (5  $\mu\text{l}$ ; transformation control) and LB kanamycin/chloramphenicol (50  $\mu\text{l}$ ; transposition control). For isolation of signal-trapped clones, the rest of the 1-ml culture was plated on LB kanamycin/chloramphenicol/ampicillin and incubated at  $30^{\circ}\text{C}$  for 2 days. Antibiotic concentrations on all plates

were: kanamycin, 50 µg/ml; chloramphenicol, 10 µg/ml; ampicillin, 13 µg/ml. Colonies on the triple antibiotic plates were re-isolated on new triple antibiotic plates, as above, except with 100 µg/ml ampicillin, to ensure elimination of false positives. Clones surviving this final selection were isolated from all library/transposon combinations.

#### 2.4. DNA sequencing and annotation

A number of signal-trapped clones were selected, inoculated into 96-well growth blocks with 1 ml/well Terrific Broth kanamycin (50 µg/ml)/chloramphenicol (10 µg/ml), and incubated at 37 °C, 250 rpm for 2 days. Plasmid DNA was isolated using QIAprep 96 Turbo Miniprep Kit (Qiagen) and sequenced using primers specific for TnSig; seqA2 (5'-AGC GTT TGC GGC CGC GAT CC-3') and seqB (5'-TTA TTC GGT CGA AAA GGA TCC-3'). DNA sequencing was performed with an ABI 3730 XL automatic DNA sequencer using BigDye v. 3.1 terminators. Removal of vector sequence, trimming, and assembly of DNA sequences was done with the PhredPhrap package (Ewing et al., 1998), followed by manual inspection and assembly correction.

Annotation was accomplished using BLASTX (<http://blast.ncbi.nlm.nih.gov/Blast.cgi>) (Altschul et al., 1997). Signal-trapped cDNAs were analyzed with SignalP v. 3.0 (<http://cbs.dtu.dk/services/SignalP/>) (Bendtsen et al., 2004; Nielsen et al., 1997) for secretory proteins having an N-terminal signal peptide or a signal anchor, and TMHMM v. 2.0 (<http://cbs.dtu.dk/services/TMHMM-2.0/>) (Krogh et al., 2001) for proteins carrying transmembrane helices.

#### 2.5. Phylogenetic analysis

The phylogenetic analysis was performed on the Phylogeny.fr platform (Dereeper et al., 2008) and comprised the following steps: Selected signal-trapped cDNAs were used as queries to search the NCBI non-redundant protein sequence database for homologous, full-length sequences using BLAST. The cDNA encoded products and the retrieved sequences were aligned with T-Coffee (v. 6.85) using the following pair-wise alignment methods: the 10 best local alignments (Lalign\_pair) and an accurate global alignment (slow\_pair) (Notredame et al., 2000). Positions with gaps were removed from the alignment. The phylogenetic trees were reconstructed using the maximum likelihood method in the PhyML-aLRT program (v. 3.0) (Guindon and Gascuel, 2003). The default substitution model was selected assuming an estimated proportion of invariant sites (of 0.045 for the trypsin-like serine protease-tree and 0.036 for the lipase tree) and 4 gamma-distributed rate categories to account for rate heterogeneity across sites. The gamma shape parameter was estimated directly from the data ( $\gamma = 1.963$  for the trypsin-like serine protease-tree and 1.795 for the lipase tree). Reliability for internal branching was assessed using the aLRT test (SH-Like) (Anisimova and Gascuel, 2006). Graphical representation and editing of the phylogenetic trees was performed with TreeDyn (v. 198.3) (Chevenet et al., 2006).

#### 2.6. Genomic PCR

Isolates of *P. neoaphidis*, *E. planchoniana*, and *C. obscurus* were grown in Grace's Insect Culture Medium supplemented with 10% v/v fetal bovine serum. Protoplasts or hyphal bodies were collected by centrifugation for 10 min at 2000g, freeze-dried, and carefully crushed prior to DNA extraction with 200 µl extraction buffer (50 mM Tris-HCl pH 7.8, 50 mM EDTA, 150 mM NaCl, 2.5% w/v Na-lauroylsarcosine, 500 mM β-mercaptoethanol) and proteinase K (600 µg/ml; Sigma-Aldrich), and incubation at 65 °C for 4 h. The NaCl concentration of the solution was then adjusted to 1 M, and an equal volume chloroform:octanol 24:1

added. After centrifugation at 12,000g for 2 min, the aqueous phase was extracted again with chloroform:octanol. Genomic DNA was precipitated with 0.6 volume isopropanol, rinsed with 70% ethanol, and, finally, dissolved in TE pH 7.8. Genomic DNA was extracted from field-collected grain aphids using the Nucleospin Plant II Kit with Lysisbuffer PL1 (Macherey-Nagel). For PCR, 1 µl genomic DNA diluted 1:100 in water was used in a 20 µl reaction with 1 u Taq DNA polymerase, 1× Taq Buffer with 1.5 mM MgCl<sub>2</sub> (Ampliqon), 0.2 mM each dNTP, and 0.5 µM each primer (Table 1). Program: pre-incubation at 95 °C for 2 min; 25–40 cycles of 94 °C for 15 s, 50–65 °C for 15 s, and 72 °C for 30 s; final extension at 72 °C for 5 min. For the deduced insect genes HM001243–HM001246, no products were obtained (even after increasing extension time to 90 s), probably due to long introns (primers not included in Table 1).

### 3. Results and discussion

#### 3.1. Production of a rich host–pathogen interaction cDNA library

To discover proteins secreted in the interaction between grain aphids and entomophthoralean fungi, we generated a host–pathogen interaction cDNA library. To ensure enrichment of the library with cDNAs specific to the host–pathogen interaction, we sampled aphids during a natural fungal epidemic. Aphid populations in arable land are typically infected with more than one entomophthoralean species (Jensen et al., 2008). On collection days, *E. planchoniana* was the most prevalent (15–27% of infected aphids), followed by *P. neoaphidis* (4–8%), and with only a few percent infected by *C. obscurus* (Fig. 2). We selected infected aphids in the afternoon, as many entomophthoralean species kill their insect hosts during that time of day to prepare for active discharge of new infective spores in the evening and night (Krasnoff et al., 1995; Milner et al., 1984; Roy et al., 2006) (see Section 2.1). Thus, the infected individuals were selected at a stage when enzymes that assist in cuticle penetration from inside the insect host were likely to be produced.

#### 3.2. TAST screening confirmed the richness of the host–pathogen interaction cDNA library

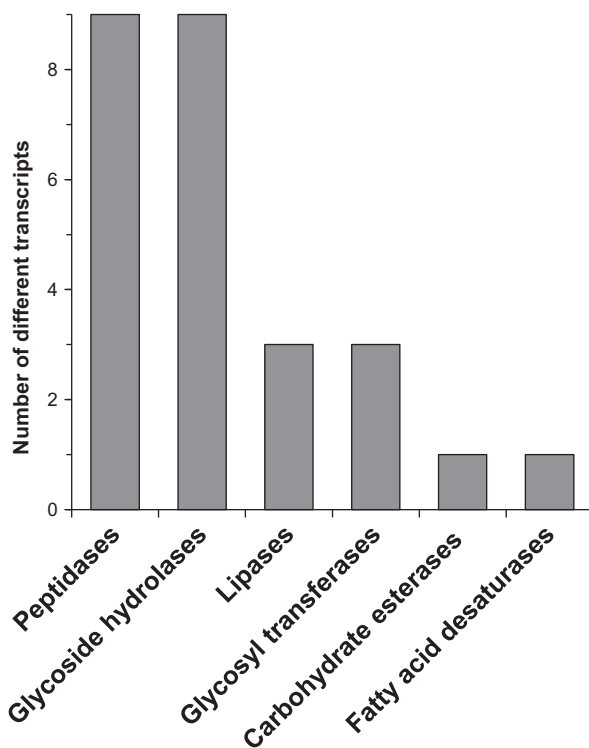
The host–pathogen library was tagged with the TnSig transposon carrying a signal-less β-lactamase (Amp<sup>r</sup>) gene (Becker et al., 2004; Hamann and Lange, 2006). Only *E. coli* clones containing full-length cDNAs (with transposon inserts) encoding secreted or membrane-bound proteins were able to grow on ampicillin plates. A collection of 576 ampicillin-resistant *E. coli* colonies was selected for sequencing. Contig formation of sequences from the 576 clones resulted in assembly of 185 cDNAs that were used to search the NCBI non-redundant protein sequence and expressed sequence tag (EST) databases using BLAST. Of these, 130 gave significant BLAST hits. Twenty-six cDNAs were predicted to encode extracellular or membrane-bound enzymes from different enzyme classes (Fig. 3). Of these, 21 were fungal (11 from *E. planchoniana*, nine from *P. neoaphidis*, and one from *C. obscurus*), two were of insect origin, and three were bacterial or bacterial-like, based on homology and/or PCR with gene-specific primers (Fig. 4). The apparent overrepresentation of secretome cDNAs from *P. neoaphidis* suggested that this species was producing a complex and diverse secretome when aphids were collected (see Section 2.1). Selected fungal and insect signal-trapped cDNAs are in Table 2.

An evaluation of the list of signal-trapped cDNAs suggested that the TAST procedure was as successful at capturing insect cDNAs as fungal cDNAs because: (1) The most highly represented gene of the 576 selected clones (found 21 times) was predicted to encode a



**Table 1**  
PCR primers.

Gene	Upstream primer 5'-3'	Downstream primer 5'-3'	Product size (bp) <sup>a</sup>
<i>EpASP1</i>	AGTGCTCTCAATTGCGCTTTTT	CTTTGGCAATTCGACTTCTTCATC	494
<i>EpMEP1</i>	ACTAACCCCGTACTGAGACC	AGCCGGCATAAAAACCTTC	418
<i>PnTRY1</i>	GCACTCGGCTCTCGTTTGTA	CACCGGGGTATCCTTTGAGAGC	695
<i>EpSPR1</i>	GGCCAGATTGAGGGACAGAA	GGGAGGTATCACAAGCATCATCA	340
<i>PnSPR1</i>	CATGGGGGTTGGCTCGTCTT	CAGGCCAAAAACATCAACACATT	591
<i>PnSPR2</i>	TGGGGGCTGGCACGCTTTCTC	TTCCCGCTGCAACACCACAACA	457
<i>EpUTR2A</i>	TTGGTGCCTAAGGGGTTTGAATA	CATCGTCTTTGAAGGCAGGCTCTC	767
<i>EpUTR2B</i>	TTCAGGTTGCAACGCCACTA	GTCAACATAACCTCTGCCATTCC	635
<i>PnGBP1</i>	TTGGTTCCTCATGACATTTAGT	GCGGTGGGGCTTTTATTTGAC	566
<i>EpCHT1</i>	GCGCAAGGCAATGGATGACAA	CAGCGTTTAGCGGCAATGGACTT	597
<i>PnCHT1</i>	GTGGACGGGATCTCAAACC	AATCCGGCTGCTAACCAATCATC	513
<i>EpCHT2</i>	TTCCCGTGCCTGATTATTTTGA	TCGGGGTAGTGGACGTTGTTTTG	604
<i>Ep107</i>	GCCTGCTCCTCGCTGCTCTA	TGCCATTTTCACTCCACCAG	413
<i>PnCHD1</i>	GAGAGCTGCCTAGTGATTGAAA	ATTGAAAGTCTCGTGTGGGTAAG	555
<i>EpLIP1</i>	AACCCAGAGTAGGCAATCGTGAC	AGCAGTAAGGAGGAGGGGAAATA	295
<i>PnLIP1</i>	ATGAGCTCCGGATTATGAGA	TTGAGAAGCCTTTTGGGTAGAC	548
<i>PnLIP2</i>	TTGCGCATGATGTGGTTATTC	CATGCGACGACGGTGTA	668
<i>EpCHS3</i>	CGCAACGTCGCGGTGATTA	GGCAGCAGCGCGTCTTTGTG	533
<i>PnCHS3</i>	TGCTGTGTGGCGGCTATTCTT	GATCACGCTCAAACCTCCGACCAC	282
<i>CoOCH1</i>	TCAGCGAGAAGAGTGGGATAA	CTGGACCGTTCGAGTTGTAG	587
<i>EpD6D1</i>	TTGGTGCCTTACAGTTTATGGTT	GAATGGTGGGGAAGAGATGATGTT	389
<i>SaCatb-16a</i>	GACCCGAGTATACCAGAGACCAT	CTTACCGGCACACGTTTATTACC	486 + intron

<sup>a</sup> Calculated from cDNA.**Fig. 3.** Diversity of secreted enzymes discovered by Transposon Assisted Signal Trapping (TAST).

secreted aphid protein of unknown function, based on high homology to pea aphid ESTs; (2) Several signal-trapped cDNAs in the insect part of the interaction library were predicted to encode silk-like and cuticle proteins (data not shown). Furthermore, TAST has been used successfully with pupae of the turnip moth, *Agrotis segetum* (M.N. Grell, A.B. Jensen, and L. Lange, unpublished results) and with other eukaryotes (Lange and Schnorr, 2004). Thus, we conclude that the low number of insect extracellular enzymes was not the result of a TAST bias for fungal signal peptides.

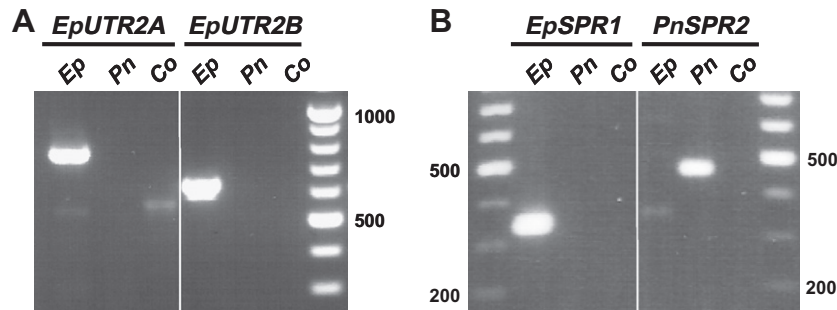
The next most prevalent genes in the collection of sequenced clones were a fungal subtilisin-like protease (*E. planchoniana* *SPR1*,

*EpSPR1*; Table 2), found 14 times, and a gene of unknown origin and function, found 11 times. That two of the presumably most highly expressed secretome genes had no homology to proteins of known function reflects the limitations of our current molecular understanding of this highly specialized host–pathogen interaction.

### 3.3. The fungal pathogens produced host degrading enzymes

Three signal-trapped cDNAs were homologous to cuticle-degrading subtilisins. *EpSPR1* (see Section 3.2) and *P. neoaphidis* *SPR1* (*PnSPR1*) aligned most significantly with the subtilisin-like serine protease PR1A of the ascomycete entomopathogen *Metarhizium anisopliae* var. *anisopliae*. *PnSPR2* aligned most significantly with bassiasin I, a PR1A homolog of another widespread ascomycete entomopathogen, *Beauveria bassiana* (Table 2). Cuticle-degrading enzymes, such as subtilisin-like serine proteases and chitinases, are essential for breaching the host surface, both during initial infection and during sporulation (Charnley, 2003). PR1A and CDEP-1 (96% identical to bassiasin I) have been shown to be pathogenicity determinants of *M. anisopliae* and *B. bassiana*, respectively (Charnley, 2003; St. Leger et al., 1996a; Zhang et al., 2008). A number of clones deduced to encode cuticle-degrading enzymes were identified in two EST studies with cultures of the entomophthoralean pathogens *Conidiobolus coronatus* and *Zoophthora radicans*, grown on insect cuticle and isolated from lepidopteran larvae, respectively (Freimoser et al., 2003; Xu et al., 2009). Our findings were substantiated by the identification of homologous clones in these libraries (Table 2, EST hits). We also identified a *P. neoaphidis* gene (*PnTRY1*) with 62% amino acid identity to a trypsin-like serine protease from *Z. radicans* (Table 2). In *Z. radicans*, this trypsin-like protease (*ZrSP1*) was implicated in pathogenesis, as it is expressed during infection (Xu et al., 2006). In *M. anisopliae*, trypsin-like proteases have been shown to be localized around appressoria and penetration pegs (St. Leger et al., 1996b) (see also Section 3.6).

Three identified genes, *EpCHT1*, *EpCHT2*, and *PnCHT1*, matched endochitinases of the glycoside hydrolase 18 (GH18) family (Cantarel et al., 2009) from basidiomycetes and oomycetes. A homolog of both *EpCHT1* and *PnCHT1* is expressed by *C. coronatus* grown on insect cuticle (Table 2, EST hits). The deduced product of *PnCHD1*, containing both a chitin-binding domain and an esterase/deacetylase domain according to the Conserved Domain



**Fig. 4.** Determination of the origin of selected entomophthoralean cDNAs. Gene-specific primers were used for PCR with genomic DNA from *Entomophthora planchoniana* (*Ep*), *Pandora neoaphidis* (*Pn*), or *Conidiobolus obscurus* (*Co*) (see Section 2.6), and fragments were separated by gel electrophoresis with size standards. (A) PCR amplification of two predicted glycoside hydrolase family 16 (GH16) cell wall glucanase genes that both appear to originate from *E. planchoniana*. Expected product sizes were 767 bp (*EpUTR2A*) and 635 bp (*EpUTR2B*). (B) PCR amplification of two predicted subtilisin-like serine protease genes, one apparently from *E. planchoniana*, and the other from *P. neoaphidis*. Expected product sizes were 340 bp (*EpSPR1*) and 457 bp (*PnSPR2*).

Database (CDD; <http://www.ncbi.nlm.nih.gov/cdd>), matched chitin deacetylases of ascomycetes (Table 2). Chitinases are important virulence factors (Fan et al., 2007; Fang et al., 2005), but subtilisin-like proteases are the primary pathogenicity determinants, because chitin fibrils within the cuticle are masked by proteins (Charnley, 2003). The reason for not identifying any *C. obscurus* cDNAs encoding penetration-specific enzymes is probably due to its low prevalence on collection days.

The deduced products of three signal-trapped cDNAs, *EpLIP1*, *PnLIP1*, and *PnLIP2*, aligned most significantly with lipases of ciliates (Table 2) and cultivable zygomycetes in the order Mucorales. Lipases may be involved in degrading the epicuticle, but as a homolog of both *EpLIP1* and *PnLIP1* is expressed by *Z. radicans* in culture, but not *C. coronatus* grown on cuticle (Table 2, EST hits), these lipases are more likely nutritional lipases that degrade host lipids in the hemolymph (Hegedus and Khachatourians, 1988) or fat bodies (Butt et al., 1981) (see also Section 3.6). The product of the identified carboxypeptidase gene (*EpMEP1*) (Table 2) is probably also involved in nutrient acquisition.

#### 3.4. The fungal pathogens were in the process of cell wall regeneration

A number of fungal signal-trapped cDNAs were deduced to encode glycosyl transferases (*EpCHS3*, *PnCHS3*, and *C. obscurus OCH1*, *CoOCH1*) and cell wall glucanases (*EpUTR2A*, *EpUTR2B*, and *PnGBP1*) (Table 2). *EpCHS3* and *PnCHS3* showed homology to *Saccharomyces cerevisiae* chitin synthase 3, which in yeast is responsible for general chitin synthesis in the cell wall and chitosan synthesis in the spore (Shaw et al., 1991). The product of the third predicted glycosyl transferase gene (*CoOCH1*) had a central domain with homology to the Och1p  $\alpha$ -1,6-mannosyltransferase domain including a DXD sugar-binding motif, according to CDD. *S. cerevisiae* Och1p is involved in cell wall mannoprotein synthesis (Nakanishi-Shindo et al., 1993). The deduced products of *EpUTR2A* and *EpUTR2B* aligned significantly with cell wall glucanases of both filamentous fungi and yeasts, including *S. cerevisiae* Crh2p/Utr2p, a glycosyl-phosphatidylinositol (GPI)-anchored chitin transglycosidase that transfers chitin from chitin synthase 3 to  $\beta$ -1,6-glucan, to create cross-links during cell wall biosynthesis (Cabib et al., 2008). Both *EpUTR2A* and *EpUTR2B* included putative GH16-GPI-glucanoyl-transferase and chitin-binding domains, according to CDD. *PnGBP1* was also predicted to encode a GH16 family enzyme, but with homology to proteins that bind  $\beta$ -1,3-glucan, the major constituent of the entomophthoralean fungal cell wall (Latgé and Beauvais, 1987). *UTR2* and *GBP* homologs are expressed by *Z. radicans* mycelium grown in culture (Table 2, EST hits).

Expression of these genes may indicate that entomophthoralean pathogens were synthesizing cell wall material within the selected aphid hosts. Together with the expression of penetration-specific

genes, this implied they were in transition from the internal protoplast-like growth phase (Butt et al., 1981; Freimoser et al., 2001) to the cell wall-delimited hyphal growth phase that marks outward penetration and conidiophore development—the stages that were our primary target for discovery. Fig. 5 (upper) shows the predicted location of the discovered fungal gene products.

#### 3.5. Do aphids possess an anti-fungal defense?

Only two signal-trapped cDNAs were predicted to encode extracellular enzymes of host origin (see Section 3.2). One of these (HM001243) showed homology to insect trypsin-like serine proteases that are part of the prophenoloxidase-activating system (Table 2), which is an important part of the invertebrate innate immune system. The system involves a serine protease cascade that is activated by the recognition of intruding pathogens, mediated by  $\beta$ -1,3-glucan binding proteins, and eventually leads to melanization of the pathogen and release of toxic quinone intermediates (Cerenius et al., 2008) (Fig. 5). However, phenoloxidases are also involved in wound healing/sclerotization (Cerenius et al., 2008) and may be expressed merely as a reaction to injury from fungal penetration. Other genes that may have been expressed in response to pathogen invasion were two signal-trapped cDNAs with homology to the fruit fly lipocalin neural lazarrillo (HM001245), and the moth lipocalins gallerin and bombyrin (HM001246) (Table 2). Lipocalins are small proteins with low sequence conservation that bind hydrophobic molecules. Neural lazarrillo was implicated to be involved in stress tolerance (Hull-Thompson et al., 2009) and a related 23 kDa lipocalin from the fall webworm, *Hyphantria cunea*, in repair of brain tissue (Kim et al., 2005).

A potential novel host defensin is encoded by HM001244, based on homology to defensin-type cobatoxin-like peptides of moths (Table 2). However, we were unable to amplify the gene from *S. avenae* (or any of the fungal species) using five different primer pairs, even though several insect anti-fungal defensins have been described (Aerts et al., 2008). The origin of this novel insect defensin therefore remains unconfirmed. A signal-trapped cDNA of confirmed host origin, *SaCatb-16a*, showed homology to cysteine proteases in the cathepsin B family (Table 2) (this is the other signal-trapped cDNA predicted to encode an extracellular enzyme of host origin). A cathepsin B from the social aphid *Tuberaphis styraci* (cathepsin B-S) is specifically expressed in the midgut of soldiers and is a component of soldier venom (Kutsukake et al., 2004). However, the closest BLAST matches were cathepsin B-16A from *Acyrtosiphon pisum* (pea aphid) and other nonsoldier-specific cathepsins (cathepsin B-Ns) (Rispe et al., 2008). Therefore, *SaCatB-16A* is most likely not a venomous protease, but may function as a digestive enzyme in the aphid midgut (Rispe et al., 2008). Despite the lack of confirmed host defense proteins, one of our fun-

**Table 2**  
Selected signal-trapped cDNAs of fungal and insect origin.

Accession No.	Gene <sup>a</sup>	Family <sup>b</sup>	Predicted function <sup>c</sup>	SigP or TMH <sup>d</sup>	Best BLASTX hit			Entomophthorales EST hits <sup>e</sup>	
					Origin	Accession No.	Identity (%)	Accession No.	E-value
<i>Fungal</i>									
HM001221	<i>EpASP1</i>	pepA1	Vacuolar endopeptidase	–	<i>Cryptococcus neoformans</i>	XP_566887	60	Zr EX149341	7e-132
HM001222	<i>EpMEP1</i>	pepM14	Carboxypeptidase A/B	1–15	<i>Acyrtosiphon pisum</i>	NP_001153859	32	–	–
HM001223	<i>PnTRY1</i>	pepS1	Trypsin-like serine protease	1–18	<i>Zoophthora radicans</i>	AAW31593	62	Zr EX148933	4e-121
HM001224	<i>EpSPR1</i>	pepS8A	Cuticle-degrading subtilisin-like protease (PR1A-like)	1–18	<i>Metarhizium anisopliae var. anisopliae</i>	CAC95042	46	Cc BQ622771	6e-72
HM001225	<i>PnSPR1</i>	pepS8A	Cuticle-degrading subtilisin-like protease (PR1A-like)	1–20	<i>Metarhizium anisopliae var. anisopliae</i>	CAC95042	50	Zr EX148865 Cc BQ622771	4e-55 5e-76
HM001226	<i>PnSPR2</i>	pepS8A	Cuticle-degrading subtilisin-like protease (PR1A-like)	–	<i>Beauveria bassiana</i>	AAD29255	48	Zr EX148865 Cc BQ622771	2e-65 8e-74
HM001227	<i>EpUTR2A</i>	GH16	Cell wall glucanase	1–16	<i>Zygosaccharomyces rouxii</i>	CAR28493	37	Zr EX148865 Zr EX149437	1e-84 2e-73
HM001228	<i>EpUTR2B</i>	GH16	Cell wall glucanase	1–19/1–17	<i>Aspergillus niger</i>	XP_001391205	36	Zr EX149437	7e-61
HM001229	<i>PnGBP1</i>	GH16	Glucan binding protein	–	<i>Actinophrys sol</i>	BAG32349	52	Zr EX149409	2e-87
HM001230	<i>EpCHT1</i>	GH18	Endochitinase	–	<i>Amanita muscaria</i>	CAC35202	33	Cc BQ622772	4e-15
HM001231	<i>PnCHT1</i>	GH18	Endochitinase	–	<i>Postia placenta</i>	EED84840	38	Cc BQ622772	4e-73
HM001232	<i>EpCHT2</i>	GH18	Endochitinase	–	<i>Aphanomyces astaci</i>	ACJ04636	30	–	–
HM001233	<i>Ep107</i>	GH?	Endoglucanase	1–18/1–23	<i>Ajellomyces dermatitidis</i>	EEQ83434	44	Cc BQ622526 Zr EX149450	2e-31 9e-54
HM001234	<i>PnCHD1</i>	CE4	Chitin deacetylase	1–15	<i>Sclerotinia sclerotiorum</i>	XP_001598179	30	–	–
HM001235	<i>EpLIP1</i>	Lipase_3	Triacylglycerol lipase	–	<i>Paramecium tetraurelia</i>	XP_001455849	27	Zr EX148746	2e-51
HM001236	<i>PnLIP1</i>	Lipase_3	Triacylglycerol lipase	1–15	<i>Tetrahymena thermophila</i>	XP_001025189	31	Zr EX148746	6e-119
HM001237	<i>PnLIP2</i>	Lipase_3	Triacylglycerol lipase	–	<i>Paramecium tetraurelia</i>	XP_001432795	28	–	–
HM001238	<i>EpCHS3</i>	GT2	Chitin synthase	97–119/129–151/156–178	<i>Laccaria bicolor</i>	XP_001877307	69	–	–
HM001239	<i>PnCHS3</i>	GT2	Chitin synthase	87–109/113–135/142–164	<i>Rhizopus microsporus var. oligosporus</i>	BAA34808	76	–	–
HM001240	<i>CoOCH1</i>	GT32	$\alpha$ -1,6-Mannosyltransferase	9–26	<i>Aspergillus niger</i>	XP_001390011	76	–	–
HM001241	<i>EpD6D1</i>	FA_desaturase	$\Delta$ -6 fatty acid desaturase	32–54/75–92/97–119	<i>Mortierella alpina</i>	BAA85588	51	Zr EX148740	9e-86
<i>Insect</i>									
HM001242	<i>SaCatb-16a</i>	pepC	Endopeptidase	1–21/1–20	<i>Acyrtosiphon pisum</i>	NP_001119617	87	–	–
HM001243	–	pepS1	Trypsin-like serine protease/ Prophenoloxidase activating factor	1–18	<i>Nasonia vitripennis</i>	NP_001155060	62	–	–
HM001244	–	Defensin	Antimicrobial protein	1–16	<i>Trichoplusia ni</i>	ABV68874	38	–	–
HM001245	–	Lipocalin/ CFABP	Lipocalin (neural lazariillo-like)	–	<i>Drosophila virilis</i>	XP_002051716	28	–	–
HM001246	–	Lipocalin/ CFABP	Lipocalin (gallerin/bombyrin-like)	1–16	<i>Galleria mellonella/Bombyx mori</i>	AAA85089/ NP_001036872	39/36	–	–

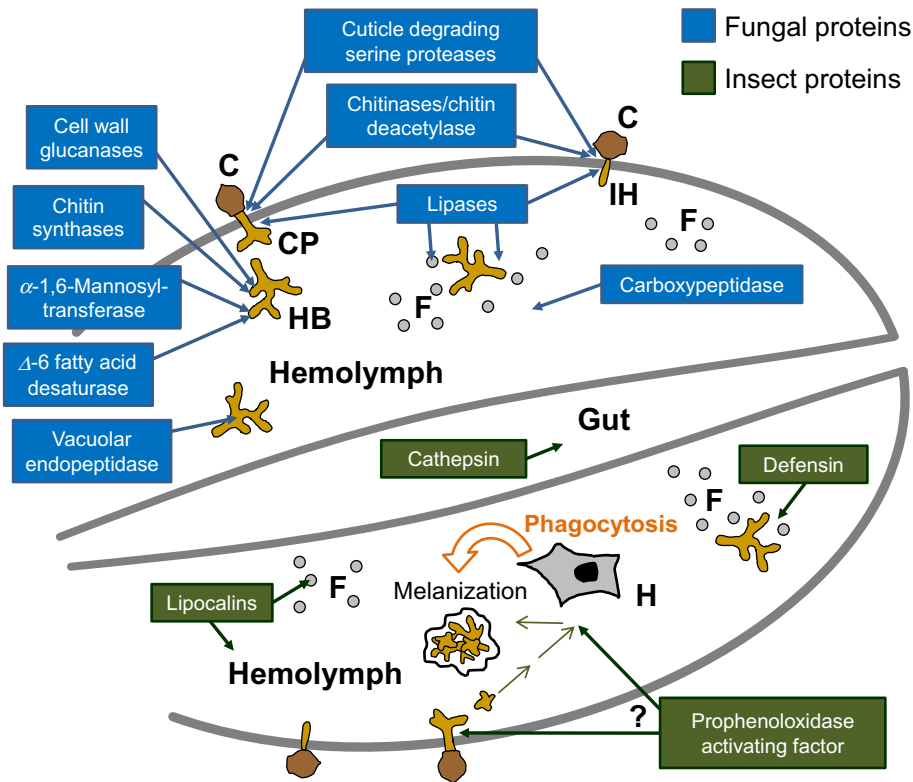
<sup>a</sup> Two first letters in name indicates origin: *Ep*, *Entomophthora planchoniana*; *Pn*, *Pandora neoaphidis*; *Co*, *Conidiobolus obscurus*; *Sa*, *Sitobion avenae*; as determined by PCR (Fig. 4). –, no gene name assigned/PCR unsuccessful, probably due to long introns.

<sup>b</sup> Affiliation to family was deduced from BLASTX hit list. Family designation according to MEROPS (<http://merops.sanger.ac.uk/>): pepA (aspartic proteases), pepC (cysteine proteases), pepM (metalloproteases) and pepS (serine proteases); CAZy (<http://www.cazy.org/nn>): GH (glycoside hydrolases), CE (carbohydrate esterases) and GT (glycosyl transferases); PFAM (<http://pfam.sanger.ac.uk/>) and InterPro (<http://www.ebi.ac.uk/interpro/>). HM001233 could not be assigned to a specific family. CFABP, cytosolic fatty-acid binding protein.

<sup>c</sup> Deduced from BLASTX hit list.

<sup>d</sup> SigP, signal peptide (interval(s) starting with 1); TMH, transmembrane helix (other intervals). HM001240 was predicted to contain a signal anchor. Numbers according to deduced amino acid sequence. Some signal-trapped cDNAs lack a signal peptide interval due to incomplete sequencing (–). Two SigP intervals mean different cleavage site predictions by SignalP-NN and SignalP-HMM, respectively. The number of TMHs of transmembrane proteins is a minimum due to incomplete sequencing.

<sup>e</sup> Non-human, non-mouse EST database at NCBI was searched with the signal-trapped cDNA sequence using TBLASTX. Best hits from *Conidiobolus coronatus* (Cc) and *Zoophthora radicans* (Zr) EST libraries are indicated. –, no Entomophthorales hits.



**Fig. 5.** Predicted functions and locations of selected TAST candidates. The schematic longitudinal section through the aphid abdomen shows predicted proteins from genes discovered by TAST. Three compartments are shown: hemolymph, gut, and fat bodies (F). Upper figure shows discovered fungal gene products (blue boxes); lower figure shows aphid gene products (green boxes). Locations (arrows) are based on homology to proteins of known function. Fungal structures are brown, aphid cells and structures are gray. Putative activation of the prophenoloxidase pathway by fungal cell wall components is indicated by thin green arrows in the lower part of the figure. This pathway leads to melanization of cell wall-delimited fungal structures, a signal for phagocytosis sensed by hemocytes (H) within the hemolymph (orange arrow). Alternatively (indicated by?), prophenoloxidase may be involved in wound healing/sclerotization at fungal penetration sites. C, conidia; CP, conidiophore development; IH, infection hypha; HB, hyphal body.

gal findings indicated that the host interior is not an entirely benign environment: *E. planchoniana* expressed a gene (*EpASP1*) with high similarity to fungal vacuolar aspartyl endopeptidases (Table 2), including *S. cerevisiae* *PEP4*. *Pep4p* is important for protein turnover after oxidative damage, and is thus involved in stress tolerance (Marques et al., 2006). An *EpASP1* homolog is expressed by *Z. radicans* in culture (Table 2, EST hits).

Expression of these genes indicated that the host was alive during pathogen vegetative growth and sporulation onset. However, the low number (or possible absence) of detected expressed host anti-fungal genes supports the hypothesis that protoplasmic Entomophthorales can escape host immune detection (Beauvais et al., 1989). It also suggests that defense responses are induced only late in the infection cycle during hyphal cell wall regeneration, when host death is unavoidable, or that aphids possess only a limited anti-fungal defense, as suggested by Gerardo et al. (2010). The predicted location of the discovered host gene products is shown in Fig. 5 (lower).

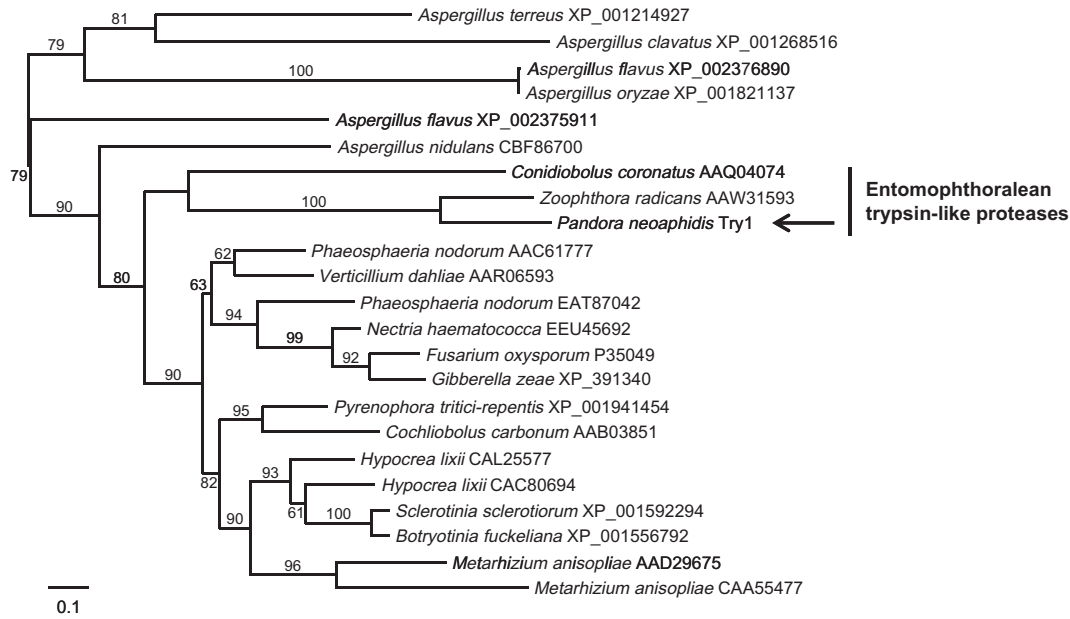
### 3.6. Enzymes from entomophthoralean fungi are unique

To determine the uniqueness of enzymes secreted by the entomophthoralean fungi, we phylogenetically analyzed the predicted amino acid sequences of selected genes. After discovering a putative *P. neoaphidis* ortholog (PnTry1) of the *Z. radicans* trypsin-like protease ZrSP1, we constructed a phylogenetic tree for comparison to trypsin-like proteases from other fungi (Fig. 6). The *P. neoaphidis* and *Z. radicans* proteases group together on a strongly supported branch and form a sister group to a *C. coronatus* protease. The long

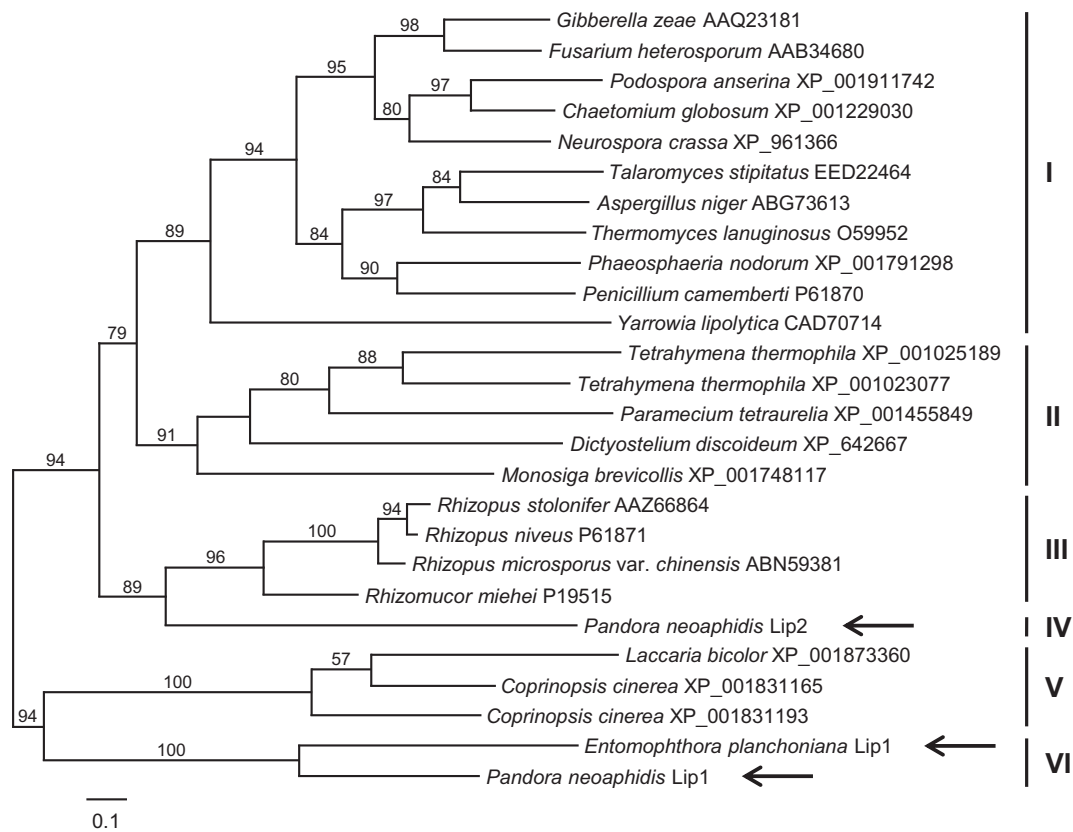
branches between the *C. coronatus* protease and the *Pandora/Zoophthora* protease group might occur because *C. coronatus* is among the most basal fungi within the monophyletic order Entomophthorales (Jensen et al., 1998). Together, the entomophthoralean proteases form a sister group to most proteases from ascomycete species, including two proteases from *M. anisopliae*, but excluding those from *Aspergillus* species, which form separate groups. Thus, the entomophthoralean trypsin-like proteases, including the one discovered here, appear to be unique from those of other fungi.

We further investigated how enzymes from the obligate pathogenic entomophthoralean fungi compare to enzymes produced by the ubiquitous, saprotrophic, and easily cultivable mucoralean zygomycetes. Both Entomophthorales and Mucorales were formerly placed in the phylum Zygomycota, but have recently been assigned to the subphyla *incertae sedis* Entomophthoromycotina and Mucoromycotina, respectively (Hibbett et al., 2007). We chose the three lipases (EpLip1, PnLip1, and PnLip2) for this analysis, because all aligned significantly ( $E$ -value  $< 2e^{-11}$ ) with a number of lipases from the Mucorales genera *Rhizomucor* and *Rhizopus*. We included several lipases from other fungi and “protists” that also aligned significantly with the three lipases (Fig. 7). From the results, PnLip2 is clearly a sister to the group of selected mucoralean lipases, while PnLip1 and EpLip1 are on a different branch as a sistergroup to the selected basidiomycete lipases. The selected ascomycete and “protist” lipases form separate groups. PnLip1 and PnLip2 may thus represent two paralogous lipase clades. Neither PnLip1/EpLip1 nor PnLip2 appear to be closely related to any deposited sequences, and are separated from their nearest neighbors by long branches. An exception is the previously mentioned





**Fig. 6.** Phylogenetic tree of trypsin-like proteases. *P. neoaphidis* trypsin-like serine protease PnTry1 of the present study (arrow) and its potential *Z. radicans* ortholog (ZrSP1) (AAW31593) are compared to full-length, trypsin-like proteases from other fungi. Entomophthoralean sequence group is indicated by a black vertical line. The tree was reconstructed using the maximum likelihood method in the PhyML-aLRT program. Reliability for internal branching is shown as a percentage at each node. Only values above 50% are shown. Bar indicates the number of amino acid substitutions. Each protein retrieved from the NCBI non-redundant sequence database is marked with species and database accession No. See Section 2.5 for additional details.



**Fig. 7.** Phylogenetic tree of lipases. Shown is the relationship of the entomophthoralean lipases identified in the present study (arrows) with selected full-length fungal and “protist” lipases. The six groups indicated are: (I) selected ascomycete lipases; (II) selected “protist lipases”; (III) selected mucoralean lipases; (IV) entomophthoralean lipase PnLip2; (V) selected basidiomycete lipases; and (VI) entomophthoralean lipases PnLip1 and EplLip1. The phylogenetic tree was reconstructed using the maximum likelihood method in the PhyML-aLRT program. Reliability for internal branching is shown as a percentage at each node. Only values above 50% are shown. Bar indicates the number of amino acid substitutions. Each protein retrieved from the NCBI non-redundant sequence database is marked with species and database accession No. See Section 2.5 for additional details.

*Z. radicans* EST clone (see Section 3.3; not included in the lipase tree), which is probably another member of the PnLip1/EpLip1 clade. This analysis highlights the uniqueness of the entomophthoralean secreted enzymes compared to the mucoralean sequences.

#### 4. Conclusions

Secretome-directed cDNA library screening shows potential as a state-of-the-art approach for discovering secreted proteins involved in complex interspecies interactions, especially for organisms whose genome is not yet sequenced. By mapping interactions between grain aphids and *Entomophthora*, *Pandora*, and *Conidiobolus* entomopathogens sampled directly from nature, we discovered several fungal gene products potentially involved in host cuticle penetration, nutrient acquisition, stress tolerance, and cell wall regeneration during conidiophore development. In contrast, grain aphids appeared to express only a few genes involved in response to pathogen invasion; in other words, they mounted only a limited immune response. This is consistent with the recently published pea aphid genome that showed that aphids have a limited immune repertoire (Gerardo et al., 2010). Interestingly, we did identify a possible novel insect defensin, although this was not unequivocally linked to the host.

Finally, the high diversity and phylogenetic uniqueness of the discovered hydrolytic enzymes indicate that pathogenic fungi, such as species within the order Entomophthorales, contain proteins whose characterization will add to our understanding of host–pathogen interactions, and lead to discovery of novel proteins with potential biotechnology applications.

#### Acknowledgments

The project was financially supported by The Danish Council for Strategic Research and The Danish National Research Foundation (Centre for Social Evolution). Line Sondt (Aalborg University) and Sanne Reib Jensen (Novozymes) are gratefully acknowledged for expert technical assistance. Novozymes is acknowledged for a royalty-free license to use the TAST technology for research purposes.

#### References

- Aerts, A.M., Francois, I.E., Cammue, B.P., Thevissen, K., 2008. The mode of antifungal action of plant, insect and human defensins. *Cell. Mol. Life Sci.* 65, 2069–2079.
- Altschul, S.F., Madden, T.L., Schäffer, A.A., Zhang, J.H., Zhang, Z., Miller, W., Lipman, D.J., 1997. Gapped BLAST and PSI-BLAST: a new generation of protein database search programs. *Nucleic Acids Res.* 25, 3389–3402.
- Anisimova, M., Gascuel, O., 2006. Approximate likelihood ratio test for branches: a fast, accurate and powerful alternative. *Syst. Biol.* 55, 539–552.
- Beauvais, A., Latgé, J.P., Vey, A., Prevost, M.C., 1989. The role of surface components of the entomopathogenic fungus *Entomophaga aulicae* in the cellular immune response of *Galleria mellonella* (Lepidoptera). *J. Gen. Microbiol.* 135, 489–498.
- Becker, F., Schnorr, K., Wilting, R., Tolstrup, N., Bendtsen, J.D., Olsen, P.B., 2004. Development of in vitro transposon assisted signal sequence trapping and its use in screening *Bacillus halodurans* C125 and *Sulfolobus solfataricus* gene libraries. *J. Microbiol. Methods* 57, 123–133.
- Bendtsen, J.D., Nielsen, H., von Heijne, G., Brunak, S., 2004. Improved prediction of signal peptides: SignalP 3.0. *J. Mol. Biol.* 340, 783–795.
- Butt, T.M., Beckett, A., Wilding, N., 1981. Protoplasts in the *in vivo* life cycle of *Erynia neoaphidis*. *J. Gen. Microbiol.* 127, 417–421.
- Cabib, E., Farkas, V., Kosik, O., Blanco, N., Arroyo, J., McPhie, P., 2008. Assembly of the yeast cell wall. Crh1p and Crh2p act as transglycosylases in vivo and in vitro. *J. Biol. Chem.* 283, 29859–29872.
- Cantarel, B.L., Coutinho, P.M., Rancurel, C., Bernard, T., Lombard, V., Henrissat, B., 2009. The Carbohydrate-Active Enzymes database (CAZy): an expert resource for Glycogenomics. *Nucleic Acids Res.* 37, D233–D238.
- Cerenius, L., Lee, B.L., Söderhäll, K., 2008. The proPO-system: pros and cons for its role in invertebrate immunity. *Trends Immunol.* 29, 263–271.
- Charnley, A.K., 2003. Fungal pathogens of insects: cuticle degrading enzymes and toxins. *Adv. Bot. Res.* 40, 241–321.
- Chevenet, F., Brun, C., Banuls, A.L., Jacq, B., Chisten, R., 2006. TreeDyn: towards dynamic graphics and annotations for analyses of trees. *BMC Bioinform.* 7, 439.
- Dereeper, A., Guignon, V., Blanc, G., Audic, S., Buffet, S., Chevenet, F., Dufayard, J.F., Guindon, S., Lefort, V., Lescot, M., Claverie, J.M., Gascuel, O., 2008. Phylogeny.fr: robust phylogenetic analysis for the non-specialist. *Nucleic Acids Res.* 36, W465–W469.
- Ewing, B., Hillier, L.D., Wendl, M.C., Green, P., 1998. Base-calling of automated sequencing traces using phred: I. Accuracy assessment. *Genome Res.* 8, 175–185.
- Fan, Y.H., Fang, W.G., Guo, S.J., Pei, X.Q., Zhang, Y.J., Xiao, Y.H., Li, D.M., Jin, K., Bidochka, M.J., Pei, Y., 2007. Increased insect virulence in *Beauveria bassiana* strains overexpressing an engineered chitinase. *Appl. Environ. Microbiol.* 73, 295–302.
- Fang, W.G., Leng, B., Xiao, Y.H., Jin, K., Ma, J.C., Fan, Y.H., Feng, J., Yang, X.Y., Zhang, Y.J., Pei, Y., 2005. Cloning of *Beauveria bassiana* chitinase gene *Bbchit1* and its application to improve fungal strain virulence. *Appl. Environ. Microbiol.* 71, 363–370.
- Freimoser, F.M., Jensen, A.B., Tuor, U., Aebi, M., Eilenberg, J., 2001. Isolation and in vitro cultivation of the aphid pathogenic fungus *Entomophthora planchoniana*. *Can. J. Microbiol.* 47, 1082–1087.
- Freimoser, F.M., Screen, S., Hu, G., St. Leger, R., 2003. EST analysis of genes expressed by the zygomycete pathogen *Conidiobolus coronatus* during growth on insect cuticle. *Microbiology* 149, 1893–1900.
- Gerardo, N.M., Altincicek, B., Anselme, C., Atamian, H., Barribeau, S.M., de Vos, M., Duncan, E.J., Evans, J.D., Gabaldón, T., Ghanim, M., Heddi, A., Kaloshian, I., Latorre, A., Moya, A., Nakabachi, A., Parker, B.J., Pérez-Brocá, V., Pignatelli, M., Rahbé, Y., Ramsey, J.S., Spragg, C.J., Tamames, J., Tamarit, D., Tamborindeguy, C., Vincent-Monegat, C., Vilcinskas, A., 2010. Immunity and other defenses in pea aphids, *Acyrtosiphon pisum*. *Genome Biol.* 11, R21.
- Guindon, S., Gascuel, O., 2003. A simple, fast, and accurate algorithm to estimate large phylogenies by maximum likelihood. *Syst. Biol.* 52, 696–704.
- Hamann, T., Lange, L., 2006. Discovery, cloning and heterologous expression of secreted potato proteins reveal erroneous pre-mRNA splicing in *Aspergillus oryzae*. *J. Biotechnol.* 126, 265–276.
- Hegedus, D.D., Khachatourians, G.G., 1988. Production of an extracellular lipase by *Beauveria bassiana*. *Biotechnol. Lett.* 10, 637–642.
- Hesketh, H., Roy, H.E., Eilenberg, J., Pell, J.K., Hails, R.S., 2010. Challenges in modelling complexity of fungal entomopathogens in semi-natural populations of insects. *BioControl* 55, 55–73.
- Hibbett, D.S., Binder, M., Bischoff, J.F., Blackwell, M., Canon, P.F., Eriksson, O.E., Huhndorf, S., James, T., Kirk, P.M., Lücking, R., Lumbsch, H.T., Lutzoni, F., Matheny, P.B., McLaughlin, D.J., Powell, M.J., Redhead, S., Schoch, C.L., Spatafora, J.W., Stalpers, J.A., Vilgalys, R., Aime, M.C., Aptroot, A., Bauer, R., Begerow, D., Benny, G.L., Castlebury, L.A., Crous, P.W., Dai, Y.C., Gams, W., Geiser, D.M., Griffith, G.W., Gueidan, C., Hawksworth, D.L., Hestmark, G., Hosaka, K., Humber, R.A., Hyde, K.D., Ironside, J.E., Kõljalg, U., Kurtzman, C.P., Larsson, K.H., Lichtwardt, R., Longcore, J., Miadlikowska, J., Miller, A., Moncalvo, J.M., Mozley-Standridge, S., Oberwinkler, F., Parmasto, E., Reeb, V., Rogers, J.D., Roux, C., Ryvarden, L., Sampaio, J.P., Schüssler, A., Sugiyama, J., Thorn, R.G., Tibell, L., Untereiner, W.A., Walker, C., Wang, Z., Weir, A., Weiss, M., White, M.M., Winka, K., Yao, Y.J., Zhang, N., 2007. A higher-level phylogenetic classification of the fungi. *Mycol. Res.* 111, 509–547.
- Hountondji, F., 2008. Lessons from interactions within the cassava green mite fungal pathogen *Neozygites tanajoae* system and prospects for microbial control using Entomophthorales. *Exp. Appl. Acarol.* 46, 195–210.
- Hull-Thompson, J., Muffat, J., Sanchez, D., Walker, D.W., Benzer, S., Ganfornina, M.D., Jasper, H., 2009. Control of metabolic homeostasis by stress signaling is mediated by the lipocalin Nlaz. *PLoS Genet.* 5, e1000460.
- Jensen, A.B., Gargas, A., Eilenberg, J., Rosendahl, S., 1998. Relationships of the insect-pathogenic order Entomophthorales (Zygomycota, Fungi) based on the phylogenetic analysis of small ribosomal sequences (SSU rDNA). *Fungal Genet. Biol.* 24, 325–334.
- Jensen, A.B., Thomsen, L., Eilenberg, J., 2006. Value of host range, morphological, and genetic characteristics within the *Entomophthora muscae* species complex. *Mycol. Res.* 110, 941–950.
- Jensen, A.B., Hansen, L.M., Eilenberg, J., 2008. Grain aphid population structure: no effect of fungal infections in a 2-year field study in Denmark. *Agric. Forest Entomol.* 10, 279–290.
- Kim, H.J., Je, H.J., Cheon, H.M., Kong, S.Y., Han, J.H., Yun, C.Y., Han, Y.S., Lee, I.H., Kang, Y.J., Seo, S.J., 2005. Accumulation of 23 kDa lipocalin during brain development and injury in *Hyphantria cunea*. *Insect Biochem. Mol. Biol.* 35, 1133–1141.
- Krasnoff, S.B., Watson, D.W., Gibson, D.M., Kwan, E.C., 1995. Behavioral effects of the entomopathogenic fungus, *Entomophthora muscae* on its host *Musca domestica*: postural changes in dying hosts and gated pattern of mortality. *J. Insect Physiol.* 41, 895–903.
- Krogh, A., Larsson, B., von Heijne, G., Sonnhammer, E.L., 2001. Predicting transmembrane protein topology with a hidden Markov model: application to complete genomes. *J. Mol. Biol.* 305, 567–580.
- Kutsukake, M., Shibao, H., Nikoh, N., Morioka, M., Tamura, T., Hoshino, T., Ohgiya, S., Fukatsu, T., 2004. Venomous protease of aphid soldier for colony defense. *Proc. Natl. Acad. Sci. USA* 101, 11338–11343.
- Lange, L., Schnorr, K., 2004. Discovery of secreted proteins and peptides during fungal–plant interactions. In: Proceedings of the 7th European Conference on Fungal Genetics. Technical University of Denmark (DTU), Denmark, p. 209.
- Latgé, J.P., Beauvais, A., 1987. Wall composition of the protoplasmic Entomophthorales. *J. Invertebr. Pathol.* 50, 53–57.
- St. Leger, R.J., Joshi, L., Bidochka, M.J., Roberts, D.W., 1996a. Construction of an improved mycoinsecticide over-expressing a toxic protease. *Proc. Natl. Acad. Sci. USA* 93, 6349–6354.

- St. Leger, R.J., Joshi, L., Bidochka, M.J., Rizzo, N.W., Roberts, D.W., 1996b. Biochemical characterization and ultrastructural localization of two extracellular trypsins produced by *Metarhizium anisopliae* in infected cuticles. *Appl. Environ. Microbiol.* 62, 1257–1264.
- Marques, M., Mojzita, D., Amorim, M.A., Almeida, T., Hohmann, S., Moradas-Ferreira, P., Costa, V., 2006. The Pep4p vacuolar proteinase contributes to the turnover of oxidized proteins but *PEP4* overexpression is not sufficient to increase chronological lifespan in *Saccharomyces cerevisiae*. *Microbiology* 152, 3595–3605.
- Milner, R.J., Holdom, D.G., Glare, T.R., 1984. Diurnal patterns of mortality in aphids infected by entomophthoran fungi. *Entomol. Exp. Appl.* 36, 37–42.
- Nakanishi-Shindo, Y., Nakayama, K., Tanaka, A., Toda, Y., Jigami, Y., 1993. Structure of the N-linked oligosaccharides that show the complete loss of  $\alpha$ -1, 6-polymannose outer chain from och1, och1 mnn1, and och1 mnn1 alg3 mutants of *Saccharomyces cerevisiae*. *J. Biol. Chem.* 268, 26338–26345.
- Nielsen, H., Engelbrecht, J., Brunak, S., von Heijne, G., 1997. Identification of prokaryotic and eukaryotic signal peptides and prediction of their cleavage sites. *Protein Eng.* 10, 1–6.
- Nielsen, C., Keena, M., Hajek, A.E., 2005. Virulence and fitness of the fungal pathogen *Entomophaga maimaiga* in its host *Lymantria dispar*, for pathogen and host strains originating from Asia, Europe, and North America. *J. Invertebr. Pathol.* 89, 232–242.
- Notredame, C., Higgins, D.G., Heringa, J., 2000. T-Coffee: a novel method for fast and accurate multiple sequence alignment. *J. Mol. Biol.* 302, 205–217.
- Paetzel, M., Karla, A., Strynadka, N.C.J., Dalbey, R.E., 2002. Signal peptidases. *Chem. Rev.* 102, 4549–4579.
- Rispe, C., Kutsukake, M., Doublet, V., Hudaverdian, S., Legeai, F., Simon, J.C., Tagu, D., Fukatsu, T., 2008. Large gene family expansion and variable selective pressures for cathepsin B in aphids. *Mol. Biol. Evol.* 25, 5–17.
- Roy, H.E., Steinkraus, D.C., Eilenberg, J., Hajek, A.E., Pell, J.K., 2006. Bizarre interactions and endgames: entomopathogenic fungi and their arthropod hosts. *Annu. Rev. Entomol.* 51, 331–357.
- Shaw, J.A., Mol, P.C., Bowers, B., Silverman, S.J., Valdivieso, M.H., Durán, A., Cabib, E., 1991. The function of chitin synthases 2 and 3 in the *Saccharomyces cerevisiae* cell cycle. *J. Cell. Biol.* 114, 111–123.
- Xu, J., Baldwin, D., Kindrachuk, C., Hegedus, D.D., 2006. Serine proteases and metalloproteases associated with pathogenesis but not host specificity in the Entomophthoralean fungus *Zoopthora radicans*. *Can. J. Microbiol.* 52, 550–559.
- Xu, J., Baldwin, D., Kindrachuk, C., Hegedus, D.D., 2009. Comparative EST analysis of a *Zoopthoria radicans* isolate derived from *Pieris brassicae* and an isogenic strain adapted to *Plutella xylostella*. *Microbiology* 155, 174–185.
- Zhang, Y.J., Feng, M.G., Fan, Y.H., Luo, Z.B., Yang, X.Y., Wu, D., Pei, Y., 2008. A cuticle-degrading protease (CDEP-1) of *Beauveria bassiana* enhances virulence. *Biocontrol Sci. Technol.* 18, 543–555.