



11TH BOARD / NEET



ANIMAL KINGDOM

PART - 5

PHYLUM

PLATYHELMINTHES &

ASCHELMINTHES

WITH MENTI QUIZ

LIVE



Dr. Vani Sood | NEET Expert



12TH NEET & BOARD



PRINCIPLES OF INHERITANCE AND VARIATION

PART - 1

INTRODUCTION TO MENDELISM & IMPORTANT DEFINITIONS

WITH MENTI QUIZ



-Dr. Vani Sood | NEET Expert-

LIVE





VBIOTONIC TELEGRAM



JOIN OUR TELEGRAM GROUP NOW !!

- **REGULAR DISCUSSION**
- **POLLS**
- **DAILY SESSION UPDATES**
- **INTERACT WITH ME**
- **ASSIGNMENTS UPDATES**
- **DAILY QUESTIONS**

= t.me/vedantu_biotonic



VEDANTU BIOTONIC

10+ Yrs of Teaching Experience

Produced **AIR 1, AIR 4** and Many More.....



AIR



AIR



Do you want to Get
AIR - 1 in NEET?

NEET

VEDANTU KVPY 2019 RESULTS



Eliza Bansal
Air -1, 2018



Oshin Bhatia
Air -4, 2015



**Pratyush
Battacharya**



**Anjali
Pattathil**



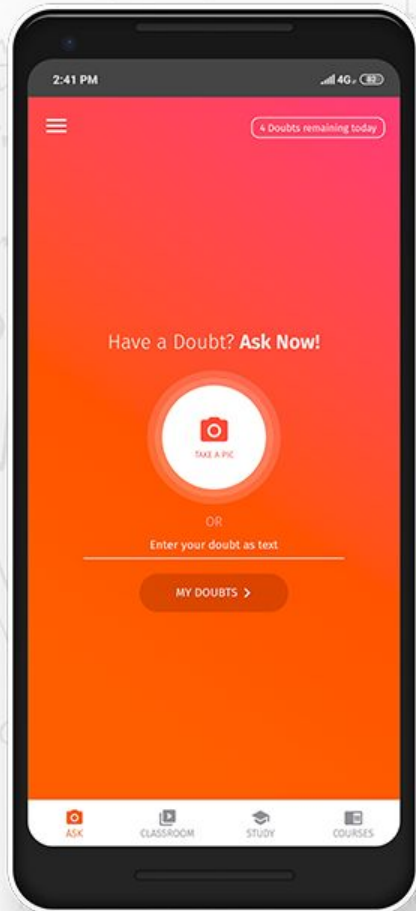
**Manan
Suri**



**Atharva A
Valanju**



**Senin
Ahammed**



Vedantu APP



DOWNLOAD NOW







Step 1: Visit <https://vdnt.in/YTLIVE> &
tap on “Learn for FREE”

Study from the safety of your home

Vedantu is committed to Help Students & Parents

How Vedantu's LIVE & ONLINE learning can be of support during Corona virus outbreak?

Free Access to LIVE Classes & Content of Vedantu for Grades 1 to 12. JEE & NEET

Hello Parents,

Amidst the Coronavirus outbreak, schools & colleges are being shut down as a precautionary measure. We understand students in these affected areas need academic support. The best way to prevent getting

Live classes · Test series
Doubts · Study Material

Learn for FREE



Step 2: Select your grade & target exam to discover all our premium courses.

Vedantu
Learn Off-School

USE APP Sign In

QUICK LINKS
Home
Our Results
Become a Teacher

Select Grade

1 2 3 4
5 6 7 8
9 10 11 12
13

Select Target

CBSE 2021 ICSE 2021
MAHARASHTRA BOARD 2021

INFO
Benefits
Why Vedantu?
Testimonials
News
Terms and Conditions
Privacy Policy

Step 3: Click on Enroll.



YOU ARE IN!

We have facilitated this service for students of **Grades 1 - 12** covering all major subjects*.

INVITE YOUR FRIENDS & Experience the New-Age of Learning from the Safety of your Home

A screenshot of the Vedantu mobile app interface. The top navigation bar is orange with the Vedantu logo, a 'USE APP' button, and a 'Sign In' button. Below the navigation bar, the breadcrumb trail reads 'Home > Grade 10 > CBSE'. The main content area features a large banner with the text 'Experience New-age LIVE Learning' and an illustration of a student interacting with a tablet displaying a math problem. Below the banner, there are icons for various subjects. The main heading is 'Vedantu CBSE Grade 10 (2020-21)'. The text below lists subjects: 'Aptitude, English, Maths, Chemistry, Social Studies, Biology, Physics' and 'Target IEO/CO-CURRICULAR/ISO/IMO/NTSE/CBSE/OLYMPIAD Grade 9,10'. Under 'Included in program', there is a 'Live Interactive classes' option with a speech bubble icon. At the bottom, it says 'Free' with a crossed-out price of '₹9999' and '100% off', and an 'Enroll' button.

Visit <https://vdnt.in/COVID> for MORE

Go to www.menti.com and use the code 52 11 20

Vedantu



11TH BOARD / NEET

ANIMAL KINGDOM PART - 5

PHYLUM PLATYHELMINTHES & ASCHELMINTHES

WITH MENTI QUIZ

LIVE 

Dr. Vani Sood | NEET Expert



SUBSCRIBE 

ANIMAL KINGDOM-PLATYHELMINTHES

Characteristics of Platyhelminthes

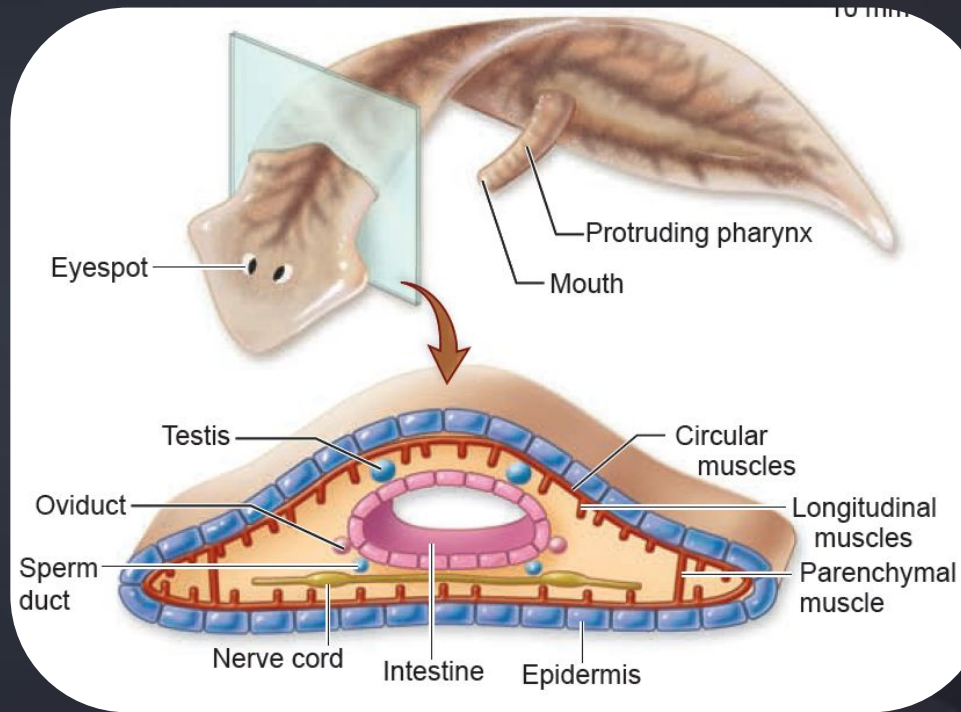
- ✓ Acoelomate, triploblastic, bilaterally symmetrical, organ level of organisation
- ✓ Dorso-ventrally flattened also called flatworms
- ✓ Helminthology is study of platyhelminthes.



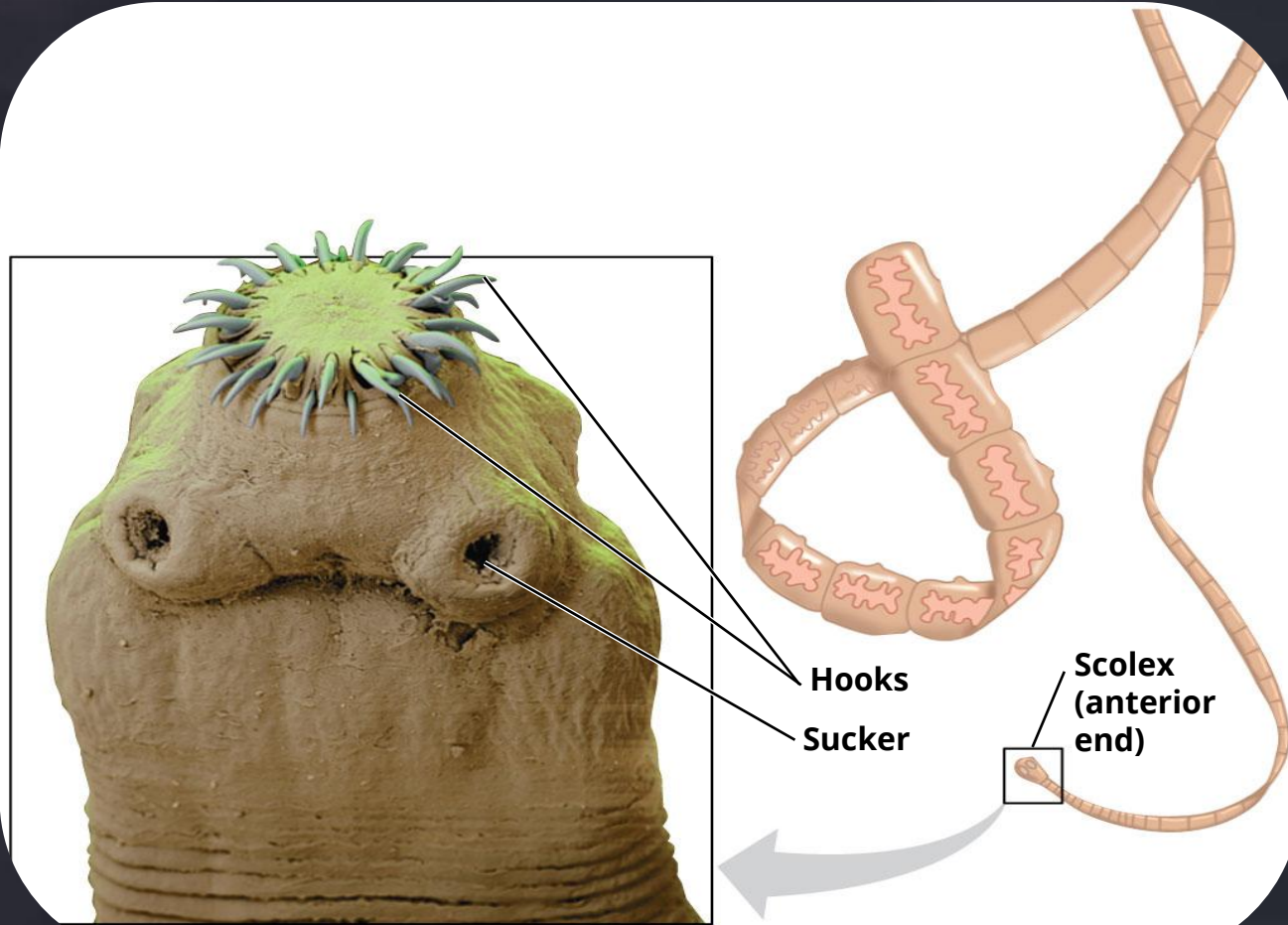
ANIMAL KINGDOM-PLATYHELMINTHES

Characteristics of Platyhelminthes

- ✓ **Habit:** Parasites, some are free-living, mainly aquatic.
- ✓ **Digestive system:** Digestive system incomplete with only one opening mouth.
- ✓ Cephalization begins in flatworm
- ✓ **Respiratory system:** Absent
- ✓ **Circulatory system:** Absent



PHYLUM PLATYHELMINTHES





ANIMAL KINGDOM-PLATYHELMINTHES

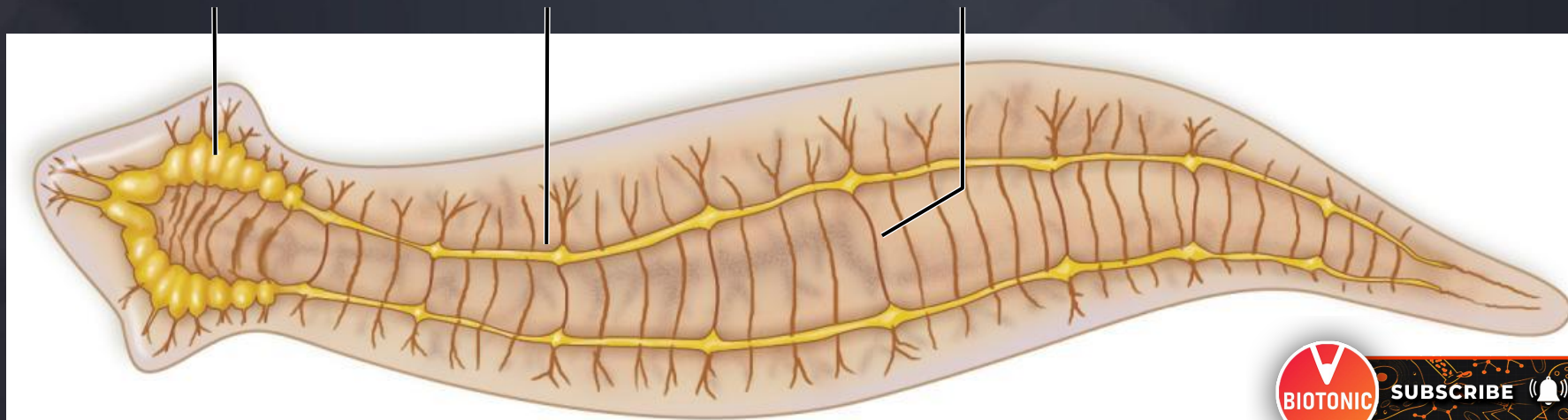
Characteristics of Platyhelminthes

- ✓ **Nervous system:** Ladder like
- ✓ Comprises of brain and two longitudinal trunks

BRAIN

LATERAL NERVE CORD

TRANSVERSE NERVE



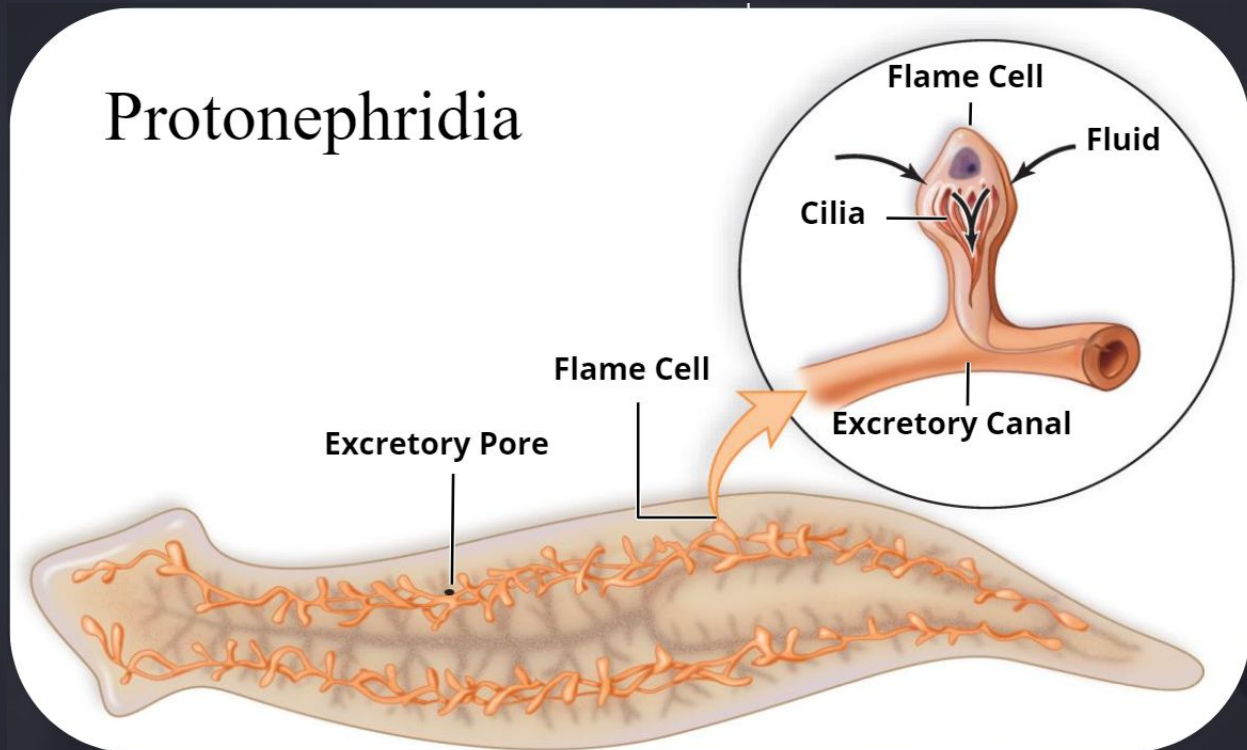
SUBSCRIBE



ANIMAL KINGDOM-PLATYHELMINTHES

Characteristics of Platyhelminthes

- ✓ **Excretory system:** Protonephridia with flame cells
- ✓ Help in osmoregulation and excretion.





Vedantu JEE 2022 Program

- FEATURES -

- **4000+ hours of LIVE** online teaching
- **40+ Teachers**; from **Top IITs and 10+ years** experience
- **750 Tests & 3000 Assignments** for Practical Application
- **Instant Doubt Solving** By Academic Mentors
- **Replay/Recording** of Classes If You've Missed
- **Rank Booster Quizzes**
- **Previous Paper** Analysis

**Boost your
learning with
Vedantu Pro**

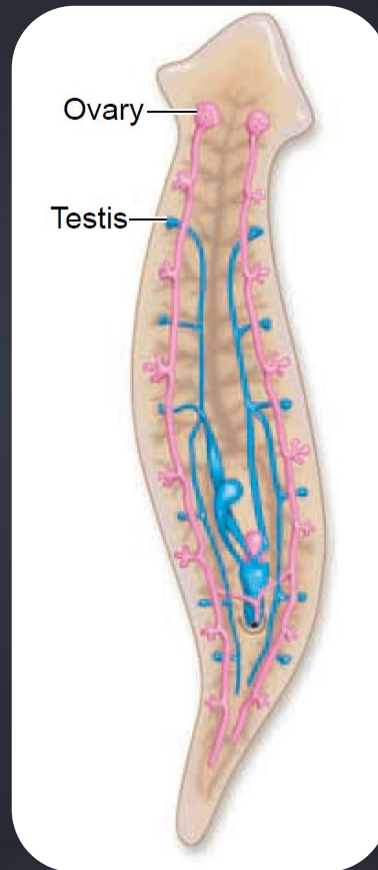
vdnt.in/YTJEE22

Enroll for FREE

ANIMAL KINGDOM-PLATYHELMINTHES

Characteristics of Platyhelminthes

- ✓ **Reproduction:** Generally bisexual, fertilization internal.
- ✓ Development is through many larval stages.
- ✓ Asexual reproduction occurs by fragmentation and regeneration.
- ✓ Planarians possess a tremendous power of regeneration.



CLASSES OF PLATYHELMINTHES

Turbellaria

Example: *Dugesia*
(Planaria)



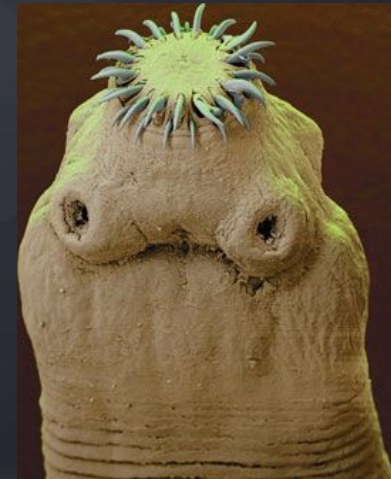
Trematoda

Example: *Fasciola hepatica* (Liver fluke), *Schistosoma* (Blood fluke)



Cestoda

Example: *Taenia solium*
(Tapeworm)



PHYLUM: PLATYHELMINTHES (flatworms)

Examples: Taenia, Planaria, Fasciola

Mnemonic: **Teeno** ki **Planning Fail** hui.



Taenia (Tapeworm)

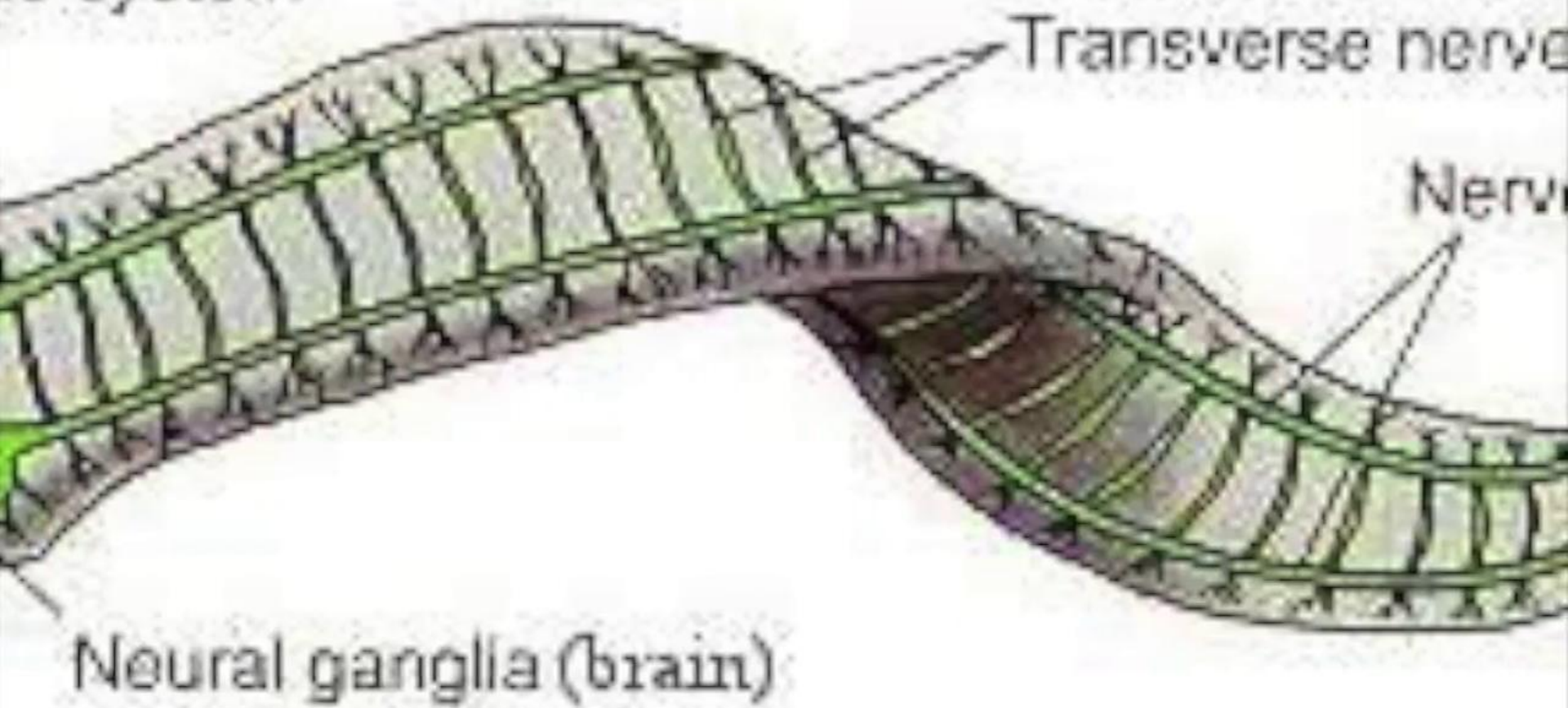


Planaria



Fasciola (Liver fluke)

is system





ANIMAL KINGDOM- ASCHELMINTHES

Characteristics of Aschelminthes

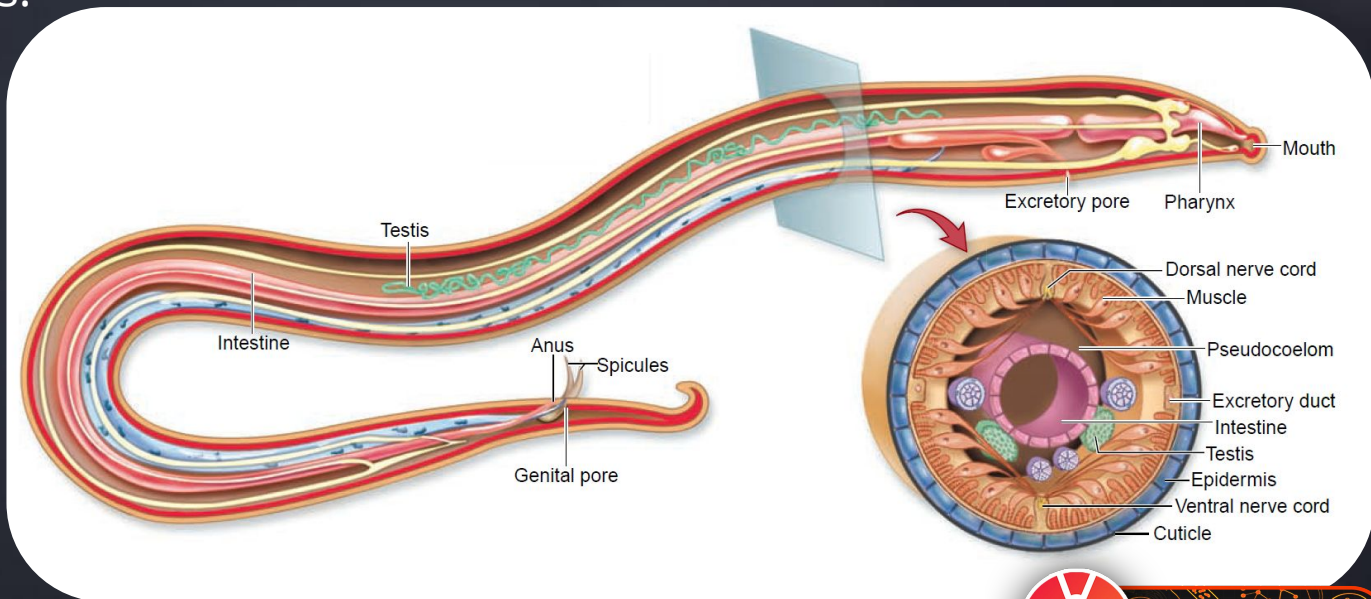
- ✓ Also called as Nematodes, roundworms, threadworms or pinworms
- ✓ They are bilaterally symmetrical, triploblastic and pseudocoelomates with organ level of organization



ANIMAL KINGDOM- ASCHELMINTHES

Characteristics of Aschelminthes

- ✓ **Digestive System:** Complete tubular alimentary canal with mouth, pharynx, intestine and anus.
- ✓ Body is covered with thick cuticle.
- ✓ Epidermis may be cellular or syncytial, without cilia.

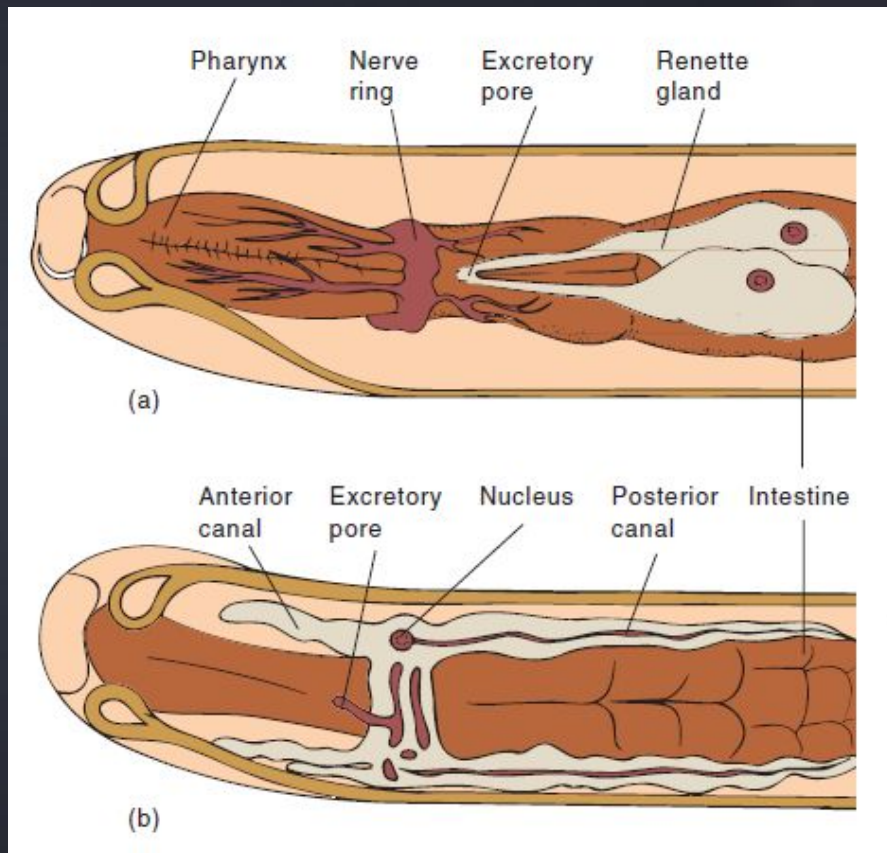




ANIMAL KINGDOM- ASCHELMINTHES

Characteristics of Aschelminthes

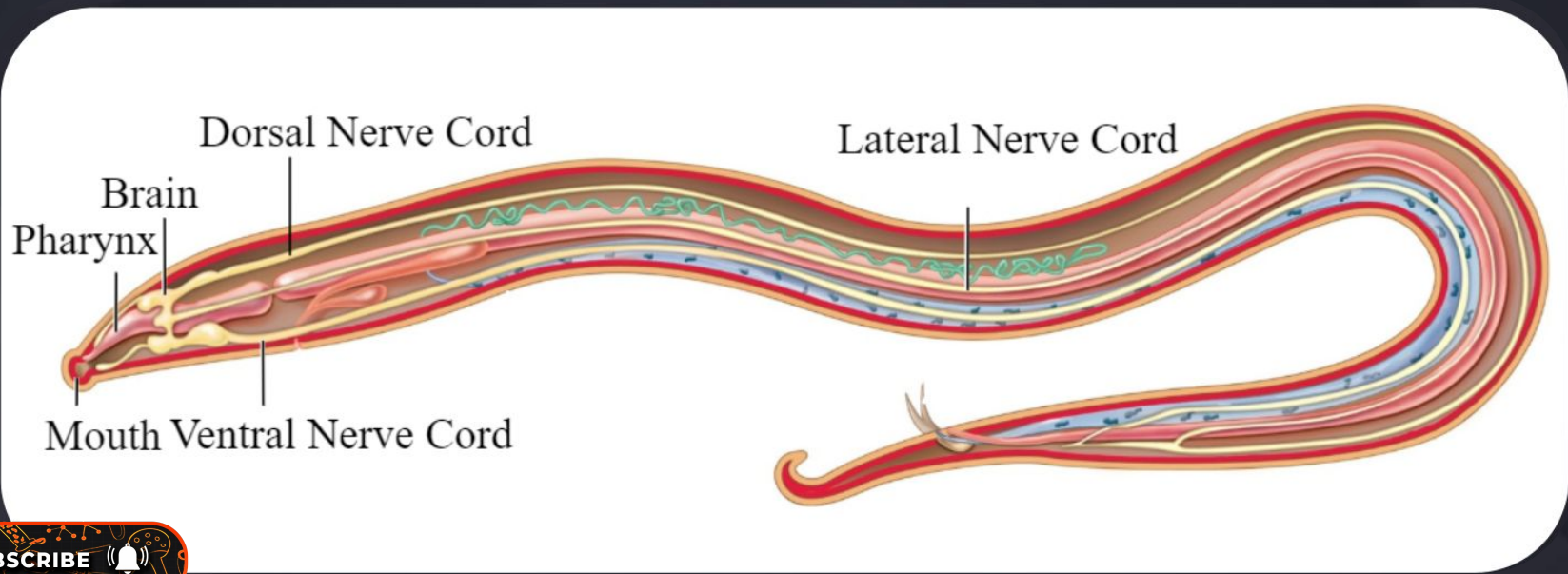
- ✓ **Excretory System:** H-shaped one or two renette cells or a set of collecting tubules
- ✓ **Respiratory system:** Absent
- ✓ **Circulatory system:** Absent



ANIMAL KINGDOM- ASCHELMINTHES

Characteristics of Aschelminthes

- ✓ Nervous system: Consists of circumpharyngeal ring with dorsal and ventral nerves.





ANIMAL KINGDOM- ASCHELMINTHES

Characteristics of Aschelminthes

- ✓ **Reproductive System:**
- ✓ Dioecious with sexual dimorphism.
- ✓ No asexual reproduction.
- ✓ Fertilization internal, development usually direct with or without an intermediate host.



Phylum – Aschelminthes (roundworms)

Examples : Ascaris, Ancylostoma Wuchereria,

Mnemonic: **Avengers & Ant-Man** went to **Wakanda**



Ascaris (Roundworm)



Ancylostoma (Hookworm).



Wuchereria (Filarial worm)





CONCEPT BUILDING FOR NEET BIOLOGY

MINERAL NUTRITION



Dr. Vani Sood | NEET Expert



Class 11 Biology Chapter 4: Playlist | Animal Kingdom | NEET Biology Lectures | NEET 2022 | Dr. Vani Sood | Vedantu

3 videos • 780 views • Updated 2 days ago

Public



No description



Vedantu BioTonic

SORT BY



NEET Biology | Animal Kingdom L-1 | Basis of Classification | NEET 2022 | Vedantu

Vedantu BioTonic



NEET Biology | Animal Kingdom L-2 | General Characteristics of Phylum - Protozoa | Vedantu

Vedantu BioTonic



NEET Biology | Animal Kingdom L-3 | General Characteristics of Phylum-Porifera | NEET 2022 | Vedantu

Vedantu BioTonic



Thank
you