



**VMRD**

PO Box 502, Pullman, WA 99163 USA

Telephone: 509-334-5815

Fax: 509-332-5356

E-mail: [vmrd@vmrd.com](mailto:vmrd@vmrd.com)

Web site: <http://www.vmrd.com>

## Certificate of Analysis

### **MOUSE IgG**

### **FITC Anti-Immunoglobulin Conjugate**

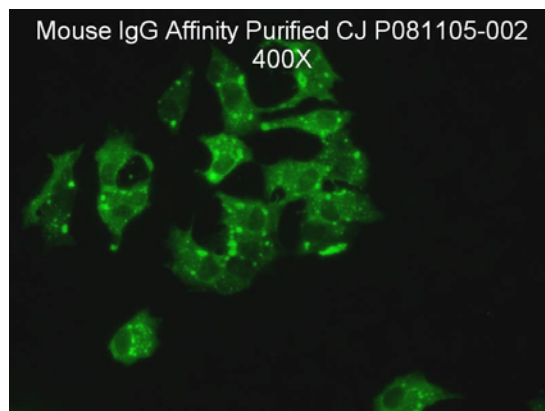
**CATALOG NO.:** 095-1

re-order as CJ-F-MURG-AP-1ML

**VOLUME:** 1 ml

**LOT:** P081105-002

**EXPIRATION:** 18 August 2012



**DESCRIPTION:** Anti-Mouse IgG polyclonal antiserum conjugated to fluorescein isothiocyanate. IgG specific by immunoelectrophoresis (IEP). Rabbit origin. Affinity purified. Ready for use.

**QUALITY CONTROL METHOD:** IFA using VMRD, Inc. Canine Distemper Virus 12 well slide (catalog no. SLD-IFA-CDV), mouse origin CDV MAb CDV-NP (catalog no. CDV-NP-0.1), and Isotype control IgG<sub>2b</sub>.

**Specific Reaction:** 4+ fluorescence on CDV-NP monoclonal at 10 µg/ml with no background.

**Other Comment:** NA

**INTENDED USE:** These antibodies are optimized for indirect fluorescent antibody (IFA) assays. They have not been evaluated for flow cytometry and are unlikely to work for flow cytometry. ***We do not recommend using them in fluorescent antibody cell sorting (FACS).***

**STORAGE:** This conjugate is provided in liquid form and should be stored at 2-7°C. **DO NOT FREEZE!** If conjugate becomes cloudy it should be discarded. This conjugate contains 0.09% sodium azide as a preservative.

FOR *IN VITRO* LABORATORY USE ONLY.

**WARRANTY:** VMRD, Inc. warrants that this product is as described in the quantity and contents stated on the label at the time of delivery to the customer. NO OTHER WARRANTIES, EXPRESS OR IMPLIED, ARE MADE BEYOND THE LABEL DESCRIPTION, INCLUDING WARRANTIES OF MERCHANTABILITY OR FITNESS FOR A PARTICULAR USE. Remedy is limited to replacement of the product or refund of the purchase price. VMRD, Inc. is not liable for property damage, personal injury, or economic loss caused by the product. The information listed in this information sheet is provided for reference only, and should not be substituted for the user's own incoming material quality control.