

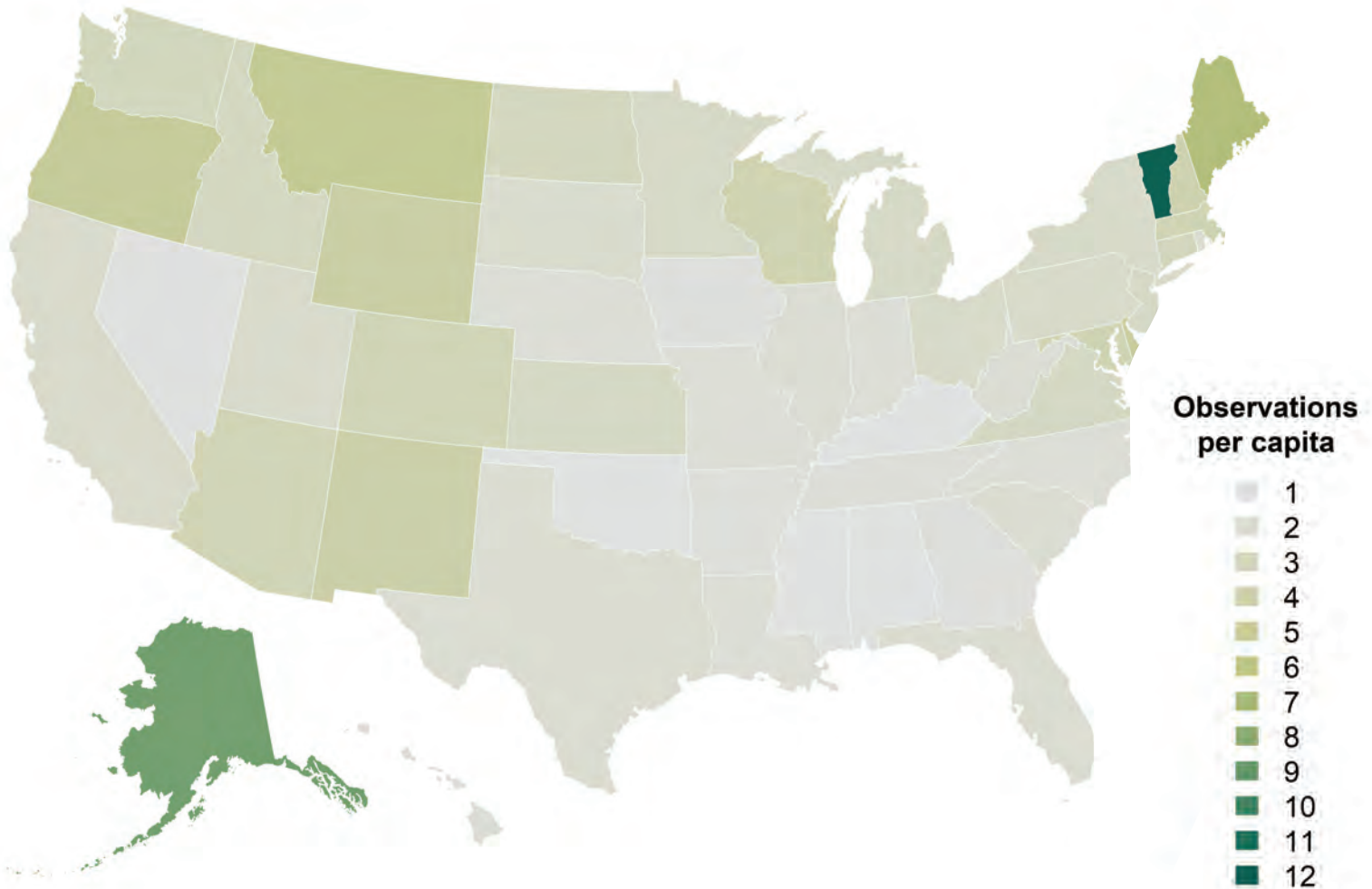
UNITING PEOPLE AND SCIENCE FOR CONSERVATION



VERMONT CENTER
FOR ECOSTUDIES

Together, we're leading the way for biodiversity.

Community scientists in Vermont have submitted more observations, per capita, into shared biodiversity databases than any other state.



To read more about VCE's Vermont Atlas of Life, see page 6.

BOARD OF DIRECTORS

Flavia Barros, *Trustee*
 Peter Brooke, *Chair*
 Celia Chen, *Trustee*
 Nan Cochran, *Trustee*
 Bill Hayes, *Secretary*
 Bob Holley, *Trustee*
 Jared Keyes, *Vice-Chair and Treasurer*
 Stephanie McCaull, *Trustee*
 Alanna Ojibway, *Trustee*
 Jennie Savage, *Trustee*
 Will Schmidt, *Trustee*

ADVISORY COUNCIL

Elizabeth Adams
 Richard Bowe
 Margaret Cheney
 Brian Dade
 Brian Farrell
 David Goudy
 Donald Graham
 Eduardo Iñigo-Elias
 Ted Jastrzembski
 David Key
 Sally Laughlin
 Yolanda León
 John Lloyd
 Peter Marra
 Larry Master
 Betsy McGean
 Gary Meffe
 Roger Pasquier
 Wendy Paulson
 Rosalind Renfrew
 Elizabeth Ruml
 Scott Sutcliffe
 Tim Traver
 Erin Tunncliffe
 Nancy West
 Stan Williams

STAFF

Susan Hindinger, *Executive Director*
 Dan Lambert, *Associate Director*
 Emily Anderson, *Director of Science Communications*
 Mistie Boule, *Business Manager*
 Steve Faccio, *Conservation Biologist*
 Alyssa Fishman, *Development Coordinator*
 Eloise Girard, *Seasonal Loon Biologist*
 Mike Hallworth, *Data Scientist*
 Eric Hanson, *Conservation Biologist*
 Spencer Hardy, *Staff Biologist*
 Jason Hill, *Conservation Biologist*
 Alex Johnson, *Communications Assistant*
 Jason Loomis, *Software Developer*
 Kent McFarland, *Conservation Biologist*
 Desirée Narango, *Conservation Biologist*
 Laura Prothero, *Development Manager*
 Ryan Rebozo, *Staff Biologist*
 Nathaniel Sharp, *Staff Biologist*
 Kevin Tolan, *Staff Biologist*

Cover photos

Front: © KENT MCFARLAND

Back: © MELISSA WEST



Susan Hindinger



Peter Brooke

Dear VCE friends and supporters,

By any measure, 2022 was a transformational year for VCE, marked by no fewer than *three* major milestones for the organization and its work.

First, we honored the inspirational leadership of Founding Executive Director Chris Rimmer, who retired in October. Chris and his co-founders launched VCE in 2007, and Chris has led the venture with unwavering passion, scientific rigor, and humor through fifteen incredible years. We are grateful beyond words for his vision and commitment to building an organization that strives for excellence and achieves it with heart. Please enjoy the retrospective of his pioneering work on the pages that follow.

Next, we surpassed our \$4.5 million fundraising goal for the first phase of our strategic plan campaign. The outpouring of support empowers us to plan with confidence and ambition as we move to maximize our conservation impact. The future of this organization and Vermont's ecosystems just got brighter, thanks to the generosity and foresight of those who've given to the campaign so far. We can't possibly thank them enough.

The third milestone was the purchase of our office building in White River Junction. A generous donor made it possible for us to establish a permanent home base for our staff, volunteers, and visitors—without depleting any operational or program funds. If you're in town, please come by to check out the space and say hello!

Through this time of organizational growth, we're also committed to retaining the qualities that helped our young organization thrive. With steadfast partners, donors, and volunteers, a wise board of directors, and a talented and innovative staff, VCE will continue to build unity and community around a common purpose. We are this century's stewards of nature, and science is our guide.

We hope you'll enjoy the updates, outcomes, and discoveries from some of VCE's signature projects on the pages that follow—and that you're proud to be a part of this rewarding and essential work.

SUSAN HINDINGER
EXECUTIVE DIRECTOR

PETER BROOKE
BOARD CHAIR

2022 was a transformational year for VCE, marked by three major milestones:

1. Executed a Leadership Change



2. Surpassed Our Fundraising Goal



3. Purchased Our Office Building



Thank you, Chris!

Chris Rimmer, VCE co-founder and its executive director for the last fifteen years, retired on October 1, 2022. Those who've had the privilege of working with Chris know him as a multi-talented leader of innovative, community-fueled conservation science. The energy and care he's devoted to VCE and its greater community is nothing short of inspiring. Here are just a few of the milestones along his journey.

The Spark

Though he started out as a classics major at the University of Vermont, Chris found his calling during a summer bird banding internship at Manomet with Trevor Lloyd-Evans, who became an influential mentor and lifelong friend. Upon his return to UVM, Chris promptly changed his major to wildlife biology and eventually went on to earn an M.S. in ecology and behavioral biology at the University of Minnesota.

Early Work

Following graduate school, Chris landed his first full-time job as director of research at the Vermont Institute of Natural Science (VINS), where he initiated programs to monitor and conserve at-risk species, including Common Tern, Peregrine Falcon, and Common Loon. He also began studying a newly declared species—Bicknell's Thrush—that would come to dominate his research and define his career as an ornithologist.



© KENT MCFARLAND



© KENT MCFARLAND

Bicknell's Thrush

In 1992 when Chris and Jon Atwood, then at Manomet, first ventured up mountains inhabited by Bicknell's Thrush, there was scant information about the species' status and ecology. Their first step involved documenting the bird's distribution in the U.S. by enlisting a network of volunteers to survey sites from New York to Maine. At the same time, Chris and Jon launched an intensive demographic study of the species on Mount Mansfield. Over 30 years later, hundreds of community scientists, ornithologists, students, conservationists, land managers, and others have joined these first efforts. Today, we monitor the population annually, coordinate the International Bicknell's Thrush Conservation Group, and continue to solve mysteries about this bird's enigmatic lifestyle high up among fog and fir trees on Mount Mansfield.

◀ Chris and Mark LaBarr banding Common Terns



© KENT MCFARLAND

The Caribbean Connection

In 1994, Chris expanded his Bicknell’s Thrush research into the mountains of the Dominican Republic, where he set up long-term study plots. He and his collaborators have since tagged over 100 thrushes to reveal the birds’ migratory pathways. They can now tag a bird in Vermont and pinpoint its precise two-acre winter territory in a Cuban, Dominican, or Haitian forest patch. Chris’ work to study and conserve this globally vulnerable songbird has established enduring partnerships across the hemisphere.

Mount Mansfield

Far more than a study site, Mount Mansfield has become, in many ways, Chris’ muse—his source of ecological inspiration, ornithological discoveries, and personal rejuvenation. One of his great pleasures has been sharing his expert knowledge of Bicknell’s Thrush and its montane habitat with hundreds of people on this iconic mountain.

Founding VCE

Ready to chart their own path, Chris and fellow VINS biologists Kent McFarland, Rosalind Renfrew, Julie Hart, Eric Hanson, and Steve Faccio launched VCE in 2007 with a common goal of advancing wildlife conservation through a combination of ecological research and community engagement. Chris took on the role of executive director and spent fifteen years building the organization’s budget, staff, volunteer and partner networks, suite of projects, and positive impact on Vermont and beyond. All the while, he maintained an active research and conservation program where Bicknell’s Thrushes breed and winter.

Mentorship

A huge part of Chris’ legacy lies in the opportunities he created for others. Through scores of training workshops, countless mentoring relationships, internships, and even bull sessions between mist net checks, Chris never stopped inspiring those around him—especially students and young professionals—to keep learning. He has boosted and even launched robust careers for scores of Caribbean and North American researchers and conservationists.

“Chris has been one of the most influential mentors in my career, shaping the scientist and conservation biologist I have become. I suspect Chris never imagined I would go on to become an eager student of molt and develop a new molt-based aging system. All of this was made possible because of his willingness to teach an eager mind. Thanks, ‘Dr. Molt.’ I will forever be in your debt.”

– Brandt Ryder

Ph.D., Chief Conservation Scientist
Bird Conservancy of the Rockies

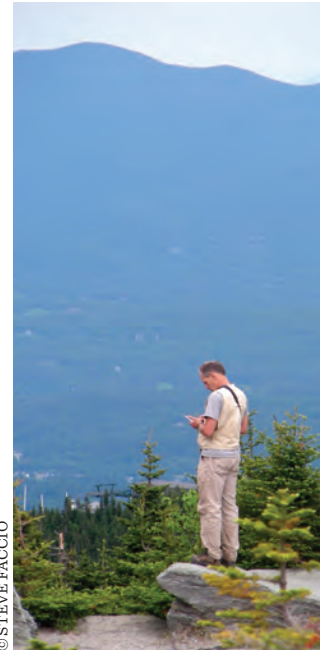
Recognition/Awards

Chris forged hundreds of connections in the ornithological community through more than three decades of mentorship, collaborative research, and conservation partnerships. These relationships have so far produced upwards of 120 publications as well as a legacy of respect and goodwill that spans five biomes from James Bay to the Greater Antilles. His influence on avian ecology and on fellow scientists is evident in a pile of awards that includes the Partners In Flight Investigation Award (1999, with Kent McFarland), the David N. Pashley Lifetime Achievement Award (also from Partners In Flight, 2021), and the Wilson Ornithological Society’s Margaret Morse Nice Award for lifetime contributions to ornithology (2022).

▼ VCE founders



© KENT MCFARLAND



© STEVE FACCIO

PARTING THOUGHTS

“After a tenure at VCE more rewarding than I can begin to express, it was my honor to pass the baton to a talented new generation of leadership. I am immensely proud of the work we’ve all done together, and I could not be more enthused and confident about VCE’s future. This organization has never been stronger or more vibrant. Its promise is unlimited, its potential barely tapped. The growth ahead for VCE will not change the core values that got us this far, but it will dramatically magnify our impacts for science-based conservation and our ability to tackle challenges facing us all.”

—Chris Rimmer

VCE's Data Powerhouse Delivers

The Vermont Atlas of Life (VAL), VCE's high-tech engine for harnessing the state's biodiversity data and putting it to work for conservation, shows how community science can change the world. And we're just getting started.

Since its inception in 2013, the number of documented observations in VAL reached more than 7 million by the end of 2022, comprising more than 11,000 species. The vast majority of those records—more than 95%—were submitted by community scientists using guidance and tools provided by VCE. Working together, we've made Vermont the nation's leader in community science observations per capita, blazing the trail for other states and regions to follow.

Because VAL was strategically built using open-source platforms integrated with the Global Biodiversity Information Facility (GBIF, the international hub for biodiversity data), all that hard-earned Vermont data are available to anyone, anywhere in the world to inform new research, conservation action, and policymaking. **Here's what that looked like in 2022:**

VAL VITALS

as of 12/31/2022

7,109,295
RECORDS

11,381
SPECIES OBSERVED

700
DATASETS IMPORTED

100
CITATIONS IN
SCIENTIFIC PAPERS



© STEVE RUHL



VAL is empowering us to be more effective than ever in our work, and its long-term potential for helping us achieve conservation victories is enormous.

CROWD-SOURCED COMMUNITY SCIENCE TOOLS



© STEVE FACCIO



© KENT MCFARLAND



© KAREN BOURQUE



© KENT MCFARLAND

◀ Through crowd-sourced community science apps like iNaturalist, naturalists can share biodiversity observations from anywhere.

A New Tool for Free & Full Access

The new VAL Data Explorer now enables anyone, anywhere to explore vast amounts of biodiversity data from across the Green Mountain State. VCE software developer Jason Loomis worked closely with GBIF to ensure smooth integration and maximum utility. Users can now filter and download data, create custom maps, image galleries and tables, and much more. The VAL Data Explorer can be found at val.vtecostudies.org under the “EXPLORE DATA” tab.

VAL and the New UN Biodiversity Framework

United Nations Member States came together in December of 2022 for the UN Biodiversity Conference (COP-15). VCE, with its Vermont Atlas of Life, joined a global network of biodiversity data partners to inform their decisions. The result was the Kunming-Montreal Global Biodiversity Framework—a landmark international agreement to drastically reduce biodiversity loss by 2030. The framework is grounded in 23 specific targets related to ecosystem restoration, invasive species management, land and sea conservation, and other critical areas.

“We need to monitor progress toward achieving these new targets, which requires documenting status and trends of biodiversity from around the world over time,” says VCE biologist and VAL Director Kent McFarland. “The Vermont Atlas of Life does exactly that here in Vermont while also contributing to the global picture.”

Working Smarter

Because VAL was built and has evolved so strategically, and because the community scientists in Vermont are so engaged, the total amount of data available is growing at an incredible pace. And as the data get more robust, they become invaluable for modeling, reporting, and designing projects likely to have the greatest conservation impact. **Here’s a pair of examples from 2022:**

- ▶ Drawing information from more than 50,000 records in VAL, we published “The State of Vermont’s Wild Bees,” the first-ever report on the status, threats, and conservation opportunities for these critical pollinators. See page 8.
- ▶ Because VAL contains tens of thousands of photo-observations of moths, we were able to feed that information into an AI prototype designed to identify moths drawn to revolutionary continuous-monitoring stations. See page 10.

Visit val.vtecostudies.org



© SPENCER HARDY

Our Landmark Case for Wild Bees

VCE has produced the first-ever comprehensive report on Vermont’s vitally important wild bees. It’s a big step toward an even more ambitious goal—an integrated conservation strategy for the whole spectrum of Vermont’s pollinators.

There is a growing public awareness that bees are both important—most notably as crop and wild plant pollinators—and a conservation concern. And while bumblebees and non-native honeybees get most of the attention, there are hundreds of wild bee species in Vermont that have received little to none ... until now.

From 2019 through 2022, VCE, in partnership with the Vermont Fish & Wildlife Department, has been going all-out to learn more about wild bee species richness, abundance, and distribution through its first Vermont Wild Bee Survey. By digitizing historic records and enlisting community scientists to record additional observations (and did they ever, logging nearly half of the 352 species present and 22% of the total records!), the VAL team grew the wild bee dataset to nearly 60,000 records.

Armed with all those data, Vermont is now one of very few states equipped to produce reliable, actionable analyses about its wild bees. Using the VAL Data Explorer, VCE has done just that with its historic report, “The State of Vermont’s Wild Bees,” which includes sections on current knowledge, threats, conservation opportunities, and next steps.

Visit stateofbees.vtatlsoflife.org

Here are just two of the ways this landmark report changes the game:

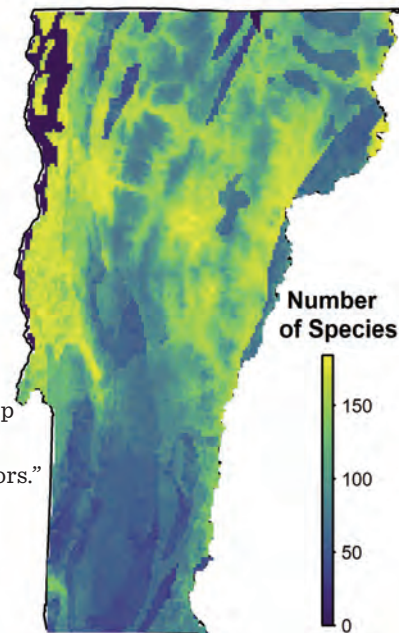
► VCE has now assigned nearly all of Vermont’s wild bees an “S-Rank,” a standardized ranking used by regulatory agencies and conservation groups to focus management efforts on species at highest risk of collapse or extinction. The new report identifies 55 species in urgent need of protection in Vermont.

► Sophisticated new models generated from VAL data have revealed 12 distinct “Important Bee Areas” within Vermont that support unique bee communities and/or rare bee species as well as region-specific conservation recommendations for each.

From here, VCE will work with a coalition of scientists, natural resource managers, decision makers, conservation planners, and others on a task force to develop a comprehensive “Vermont Conservation Strategy for Pollinators.” Together, we can—and must—provide a landscape where these animals can thrive and serve their ecosystems, now and for future generations.

▲ Bi-colored Sweat Bee

▼ The map shows how bee diversity across Vermont may change given anticipated climatic conditions. Visit the State of Bees report to view an interactive map.





© SUSAN HINDINGER

2 NEW VCE TOOLS

VERMONT WILD BEE GUIDE
IS AN ONLINE GUIDE TO HELP NATURALISTS IDENTIFY BEES FROM PHOTOGRAPHS.

BUMBLE BEES OF NEW ENGLAND
IS A TWO-PAGE, PRINTABLE PDF THAT CAN BE BROUGHT INTO THE FIELD.

Using AI in the Race to Save Insects

To protect insects against decline and collapse, we need a more robust accounting of their populations and population trends. VCE is working with international partners on a revolutionary new way to speed up that process—autonomous, computer-controlled monitoring stations that attract insects and use AI to identify them. First up: moths.

Moths are an incredibly diverse group of insects that are important to the ecosystems they inhabit. They are a valuable food source for everything from spiders to bears, and are vital and prolific pollinators, too.

Scientists are concerned that moths, like a great many other insect groups, may be in rapid decline. If that sounds indecisive, it's because baseline population data for moths is spotty at best. Why? Because surveying moth populations across large areas using boots-on-the-ground field techniques is very challenging. For starters, most of the astronomical number of species—thousands in Vermont alone—are nocturnal.

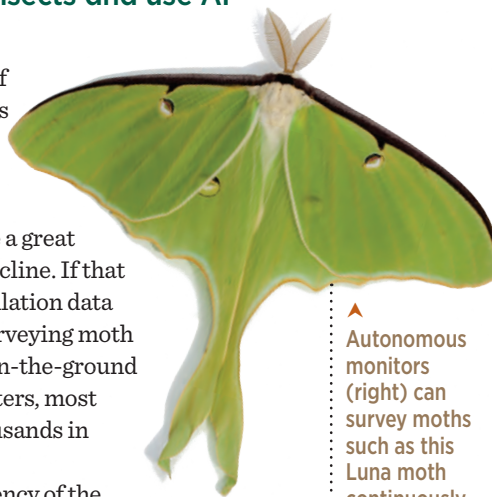
To tackle the knowledge gap with the urgency of the moment, VCE's Kent McFarland and a team of biologists, engineers, and computer scientists from around the world have designed and built autonomous, computer-controlled monitoring stations—stationary robots, basically—that can survey moths continuously, in any environment, and orders of magnitude faster than human researchers ever could.

In 2022, the team successfully field-tested the units in the United Kingdom, Canada, Cyprus, Panama, Argentina, and of course here in Vermont.

At sunset each night, the units automatically turn on using a solar-powered battery. The computer triggers the camera to snap an image each time a moth lands or moves on the moth-attracting UV light panel. Each image is then analyzed by AI, first to determine if it is a moth, then—if it is—to classify it.

Building reliable AI for identifying moths in this way requires feeding the software lots of information from which it can “learn” to distinguish one species from another. Due almost entirely to VCE's mobilization of community scientists to document moth sightings over the last decade, we were in a unique position to provide that information. Those records—well over a hundred thousand of them, logged through VCE projects on iNaturalist, and available via VAL—are the knowledge base on which this powerful new technology is being built.

Ultimately, these units will be feeding vast amounts of data back into VAL. And while the first-generation machines are focused on moths, efforts are already underway to expand monitoring capabilities to other taxa as well. The potential torrent of new data could revolutionize our ability to detect insect population changes and create effective conservation plans.



▲ Autonomous monitors (right) can survey moths such as this Luna moth continuously.





FUN FACT

The scientist charged with building the AI for this project is Dr. David Rolnick, professor at McGill University. David is a pioneer in machine learning applications for climate change and biodiversity, but we first got to know him as a budding, 12-year-old naturalist who volunteered to help us with the first Vermont Butterfly Atlas in the early 2000s. It was clear at the time that David was destined for great things, and it's an honor to be working with him again.

© KENT MCFARLAND

Communicating Science

► **Suds & Science:** VCE biologist Jason Hill hosts this live and laid-back, free program, in which guest scientists talk about their work and engage in Q&A with the audience. Explore the video archive and learn about upcoming programs at vtecostudies.org/suds-and-science.



▲ **Biologist Jason Hill connects experts with community members to discuss topics such as insect conservation in a warming world.**

► **eNews:** Every month, VCE's electronic newsletter, eNews, brings the outdoors to your email inbox. We report on the innovative field work of VCE biologists and breaking news from the frontiers of conservation biology—here in Vermont and beyond. eNews is short and designed to inspire you to explore the natural world. Subscribe at vtecostudies.org/subscribe or find past issues at vtecostudies.org/enews.

► **Field Notes:** Our annual spring and autumn news magazine offers in-depth explanations of the science and conservation efforts of VCE biologists and our community scientists. Learn about what we've been doing and how you can join us to study and conserve wildlife. Find past issues online at vtecostudies.org/field-notes.



Staging a Comeback for Meadowlarks

At the request of the Vermont Fish & Wildlife Department, VCE is producing the state's official recovery plan for the threatened Eastern Meadowlark and will lead the monitoring effort to track progress.

The U.S. Department of the Interior's annual North American Breeding Bird Survey indicates that Vermont is now losing 8.7% of its remaining Eastern Meadowlark population, already decimated from historic highs, every year. In February of 2022, the Eastern Meadowlark was officially designated as a threatened species in the state, meaning it's likely to become endangered without timely intervention.

Successful conservation of any species depends on a robust understanding of its resource preferences, range and distribution, breeding behaviors, and other factors. But because Eastern Meadowlarks' preferred grassland habitat makes them difficult to observe, they've likely been underrepresented in traditional survey work and datasets. To begin addressing the situation, VCE has recently been conducting field surveys dedicated solely to Eastern Meadowlarks, more than doubling the number of meadowlark records in the Vermont eBird database.

Now, because of VCE's expertise in ornithology and conservation and our volunteer network's unequalled capacity to monitor meadowlarks statewide, the Vermont Fish & Wildlife Department has contracted with us to produce the state's official Eastern Meadowlark Recovery Plan. Among key elements will be finding and protecting previously unreported breeding sites and enlisting the help of property owners who have breeding birds on their land. We also need to learn more about these birds' relatively unknown migration patterns, which will allow for a whole-lifecycle approach to conservation that may extend beyond our borders.



Vermont is now losing 8.7% of its remaining Eastern Meadowlark population, already decimated from historic highs, every year.

U.S. DEPARTMENT OF THE INTERIOR'S ANNUAL NORTH AMERICAN BREEDING BIRD SURVEY





© EMILY ANDERSON

Adding Invertebrates to the Bird Equation

High-elevation ecosystems are fragile and spatially limited, and wildlife there exists in a delicate balance. VCE's Mountain Birdwatch program has launched a new project to find out how bird populations in New England's mountains might be changing based on an under-studied food source: invertebrates.

Every June for the last 22 years, VCE's Mountain Birdwatch biologists and volunteers have conducted bird counts in the high-elevation spruce-fir forests of New York and northern New England. Data now stored in the Vermont Atlas of Life show that the populations of the ten target species are, in fact, changing, with most in decline. The next logical question is why? One way to address that question is to follow the food.

Invertebrates are essential prey items for each of the birds in the Mountain Birdwatch study, but there haven't been enough invertebrate data collected in the spruce-fir zone for a baseline understanding of their populations. This year, VCE set out to change that, adding a separate survey of invertebrates at 42 Mountain Birdwatch locations across Vermont and New Hampshire.

In total, we collected and painstakingly identified over 5,000 specimens, mainly flies (60%) and beetles (18%). Notably, those communities were very consistent across sites, indicating that the sampling methods were reliable. As a result, we now have the clearest image yet of these specific invertebrate communities and, critically, a baseline for comparison with future surveys.

VCE biologist Jason Hill then did an initial correlation analysis between the new invertebrate data and data for six of the birds in question. He was surprised to find that the abundance of each bird species did not mirror invertebrate community diversity nor overall invertebrate biomass. Instead, each bird species' abundance was associated with just one or two groups of invertebrates.

We will continue this landmark study in parallel with our annual Mountain Birdwatch surveys. Over time, the data will help us understand much more about how bird and invertebrate populations are related, and how we might design more effective conservation strategies.



© JASON HILL (2)

▲ Invertebrate traps being placed in the air by former VCE ECO AmeriCorps member Abbie Castriotta



5,000+
SPECIMENS
COLLECTED

▲ VCE biologist Jason Hill inspects a GPS tag newly placed on a meadowlark.

◀ An Eastern Meadowlark sings at the edge of a field.

© JASON HILL

Matching Birders with Private Landowners

The vast majority of Vermont's forestland is privately owned and beyond the reach of traditional wildlife studies. To address one gap in our knowledge, VCE and Bird Diva teamed up to create Birder Broker, a service that connects expert birders with landowners interested in learning about the birds within their property lines. Three years in, the project is revealing important breeding data from previously uncharted territory.

Knowing where Vermont's forest birds nest and raise their young is critical to designing conservation plans likely to ensure their long-term success. Using eBird's mobile app, Birder Broker volunteers keep track of this valuable information on bird behavior by using "Breeding Codes," a standardized system for noting whether a bird is a possible, probable, or confirmed breeder. In 2022, our amazing Birder Broker volunteers coded 69 different species across 18 properties, with nearly 80% of all observations coded as either confirmed or probable breeders.

Participants also compiled 50 checklists, comprised of 96 total species, into Vermont eBird. Among them were two—Carolina Wren and Lincoln's Sparrow—that hadn't been previously seen or heard during Birder Broker surveys. And, thanks to the program, National Audubon Society scientists have discovered a new breeding hotspot for two species of warblers known to be in decline.

Finally, landowners who learn which species of birds are breeding and raising young right in their backyards can make informed decisions about forest management to support as many species of breeding birds as possible.





© CHARLES GANGAS



▲ A loon chick catches a ride on its parent's back.

Safeguarding Vermont's Loon Recovery

Thanks to VCE's Vermont Loon Conservation Program, the state's loon population is back to nearly full capacity after a period of alarming declines. Now, we're ramping up our biopsy and necropsy work to assess ongoing and emerging threats, and to inform strategic, future-focused management plans.

In 2022, VCE embarked on its third year of performing necropsies* on every recovered deceased loon in the state. Unlike most other methods, necropsies allow us to obtain a precise cause of death. Without performing necropsies, we'd be unaware of two rising causes of loon mortality: aspergillosis (a pulmonary infection caused by a fungus) and malaria (a mosquito-borne disease that causes anemia). We also examined loons killed by ingesting fishing gear, confirming that this remains an issue that needs to be addressed.



Another critical part of our loon health research is analyzing blood and feather samples. Through these samples, we can better understand the impacts of mercury, malaria, and aspergillosis at the population level among loons that may otherwise show no signs of illness. With mercury in particular, we can use our results to guide environmental policy and make management recommendations.

By collecting these valuable data and contributing them to continent-wide studies, we strengthen conservation efforts here in Vermont and help ensure the recovery of loons across their range.

*Special thanks to Bren Lundberg from the Vermont Institute of Natural Science (VINS), the University of New Hampshire Diagnostic Veterinary Laboratory, and Dr. Mark Pokras and his students at the Cummings School of Veterinary Medicine at Tufts University for their invaluable partnership in this effort.



45
BIRDER
BROKER
VOLUNTEERS

CODED
69
SPECIES

ACROSS
18
PROPERTIES

© NATHANIEL SHARP

Connecting Policymakers with Scientists

The Science to Policy Working Group, a new partnership including VCE and policy-focused organizations in Vermont, held its first Science to Policy Forum for legislators. The Forum clarified the scientific dimensions of key policy issues and opened new channels for ongoing consultation.

While VCE is not an advocacy organization, we are committed to ensuring decision-makers understand our work and to serving as a scientific resource for legislators. Over three webinars, scientific experts from across Vermont discussed climate change and landscape resilience, forest health and biodiversity, and water quality. By sharing our work with policymakers, we inform ecologically sound policies, connect legislators with our knowledgeable team of biologists, and build collaborations with other policy-minded colleagues across the state.



© KENT MCFARLAND

A Sampling of VCE's Community Science Opportunities



© MIKE ZIMMERMANN

Mountain Birdwatch

Each June, volunteers hit the trails to complete bird survey routes on 123 mountain ridgelines across the Northeast.



© SEAN MCCREADY

Loon Conservation

Whether you live alongside a lake or only occasionally visit your favorite pond, VCE offers several options for interested loon volunteers.



© KENT MCFARLAND

Vernal Pool Monitoring

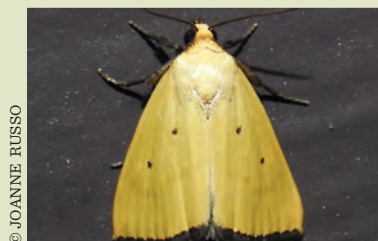
In April, May, and September, volunteers visit and collect data to monitor "adopted" vernal pools following protocols and using VCE-provided equipment.



© KENT MCFARLAND

Whip-poor-will Project

On moonlit nights in early summer, volunteers set out on 17 roadside survey routes to listen for Eastern Whip-poor-wills and record conditions.



© JOANNE RUSSO

Moth Blitz

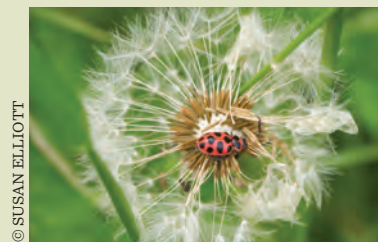
During National Moth Week in July, volunteers leave the porch light on—or use special lights and baits—and help map moth species distribution in Vermont.



© BRYAN PEIFFER

Forest Bird Monitoring

Each June, volunteers monitor breeding birds on 31 sites across Vermont in one of the continent's longest-running studies of forest bird population trends.



© SUSAN ELLIOTT

Lady Beetle Atlas

In early June and August, volunteers keep an eye out for the state's 36 native species, including the four "most wanted": Nine-spotted, Two-spotted, Transverse, and Thirteen-spotted.



Cocoon Watch

During the month of November, volunteers find and photograph cocoons hanging in bushes and trees. They return in the spring to document what emerges.

2022

BY THE NUMBERS

Community Science Project Volunteers



MOUNTAIN BIRDWATCH

89

LADY BEETLE ATLAS

297

FOREST BIRD MONITORING PROGRAM

28



VERMONT LOON CONSERVATION PROJECT

420

WHIP-POOR-WILL PROJECT

12



VERNAL POOL MONITORING

35



© RON SMITH

Meeting Teachers Where They Are

With the launch of Community Science Teacher Education Workshops, VCE is empowering teachers to meet the Next Generation Science Standards using community-based project design, open data platforms, and the ecosystems right outside their doors.

Vermont and New Hampshire are among 20 states using a new teaching system to help K–12 students realize that science is not only something they can grasp—it’s something they can do. The system, known as the Next Generation Science Standards, is inquiry-based, meaning students are encouraged to ask their own questions and develop hands-on research approaches to find the answers.

If that sounds like community science, it absolutely is. And that’s why VCE decided to lend its unique expertise in that realm to the effort. For decades, VCE has been leading projects and building tools that open doors to anyone who wants to make a meaningful contribution to conservation science. Now we’re sharing that knowledge with teachers through a new Community Science Teacher Education Workshop series, which includes a stipend to reduce financial barriers to participation.

The first of these annual four-day workshops, based at VCE’s Upper Valley headquarters in July, was a huge success. Our scientists and educators worked with local teachers on experimental design and field sampling techniques that can be applied to a broad range of ecological questions their students might want to investigate right in their own neighborhoods.

This is critical because one of the surest ways to make science feel relevant for young learners is using it to create a deeper connection to their everyday environments. We also integrated data-sharing platforms like VCE’s Vermont Atlas of Life to demonstrate how hyper-local data collection can tie students’ work into a much larger scientific picture.

Ryan Rebozo, VCE’s director of conservation science and co-leader of the workshop, said it best: “The positive ripple effect generated by empowering teachers is hard to match, and VCE is immensely proud that this new venture does just that.”

Special thanks to the New Hampshire Charitable Foundation’s Wellborn Ecology Fund and Hypertherm’s HOPE Foundation for their funding support for this program. Thanks also to science educator, naturalist, and community science project leader Ron Smith for co-facilitating the workshop.

Levi Smith

VCE Junior Community Scientist of the Year

On a brisk November day, former VCE ECO AmeriCorps member Julia Pupko led a group of community scientists in search of Giant Silk Moth cocoons at Brookmead Conservation Area. One young participant, Levi Smith, began sharing information about silk moths with those around him. It quickly became apparent that his knowledge of these insects was extensive, Julia recalls. “Not only can he tell you everything about each species’ cocoon, but he also spends the weeks when the adult moths are flying meticulously recording each individual attracted to his blacklight, staying up until all hours of the night.”

Julia invited Levi to co-lead the next cocoon hunt in the Zebedee Wetlands. He arrived well-prepared, right down to his collection of cocoon samples for each moth species. “Levi absolutely rocked that event,” Julia says. “His ability to confidently describe each moth’s phenology and cocoon strategy made our bioblitz a tremendous success.”

“When I heard about the Vermont Giant Silk Moth Cocoon Watch last fall, I was excited to get involved,” Levi said. He quickly became the project’s top contributor on iNaturalist. “After I started posting cocoons, I got really interested in other taxa, like galls, mosses, fungi, and lichens.” Today, Levi’s iNaturalist contributions number nearly 13,000, representing more than 2,700 species. Each observation represents a single data point in the Vermont Atlas of Life, where it helps VCE biologists and professionals across the state better understand and predict biodiversity trends.

As part of this award, VCE sent Levi and his mom to the 2023 Northeast Natural History Conference in Burlington, VT. Levi wrote to say, “Thank you so much for sending me to the conference. I really enjoyed it and I learned so much. I liked learning about stoneflies, carnivorous plants, and seeing my mom get excited about native bees. I also got to identify Jerry Jenkins’ moss samples to win a signed book, and explore Colchester Bog and Niquette Bay State Park. I hope my mom will take me to the conference again next year in New York.”



© SARAH BARTOS SMITH



Ian Worley

Julie Nicholson Community Science Award

“I was born looking around the world to see what was there.” Ian Worley’s innate curiosity may help explain why he began finding salamanders at age three, building model airplanes at four, and ultimately studying multiple disciplines: math, physics, biology, philosophy, history, literature, and theology.

Today, Ian applies his expertise and passion to community science endeavors. He notes, “There are four hallmarks of modern science—repeatable methods, documentation, review, and publication.” In all tasks, he considers how to add rigor to community science projects and thus is drawn to participating in those that feature all four hallmarks. Ian’s participation in eBird and VCE community science projects is an endorsement of their robust methodology.

In 2009, Ian responded to a call for Vermont eBird volunteer reviewers from VCE’s Kent McFarland. What started as reviewing checklists in the Champlain Valley for an hour per week steadily grew to over 30 weekly hours validating lists for many locations worldwide, spanning the Arctic and North Atlantic oceans to the subantarctic Indian Ocean. “I enjoy the global impact one can have as an eBird reviewer,” Ian explains. However, Ian isn’t only an energetic reviewer—he’s also a major eBird contributor himself,



© KEVIN HALL

**“I was born
looking
around the
world to
see what
was there.”**

—IAN WORLEY

having recently submitted his 25,000th checklist.

In addition to his enormous eBird presence, Ian also conducts community science field work to support VCE projects. Among his numerous contributions to our research, he has maintained Forest Bird Monitoring Program routes at Bristol Cliffs Wilderness Area and in West Rupert for several years and conducted Eastern Whip-poor-will surveys for over ten years at many locations, including Snake Mountain and sites in Pawlet, Monkton, and Hinesburg.

We at VCE recognize Ian’s contributions to community science and thank him for his outstanding work. As Chris Rimmer points out, he was

nominated for this award because “Ian has consistently gone to extraordinary lengths as an eBird reviewer and outreach champion. Not only has he invested innumerable hours reviewing eBird reports from around the state, he has also offered meticulous feedback to those who have submitted exceptional (sometimes questionable) records. Ian has also submitted an extraordinary number of checklists himself. The amplified rigor of Vermont eBird owes much to Ian’s efforts.” Ian continues to be a vocal community science ambassador, encouraging participation in VCE’s ever-expanding long-term monitoring projects.

By supporting this work,
you are *doing* this work.

Thank you!



DONORS

VISIONARIES

\$100,000+

Anonymous
Annette Gosnell*
The Estate of Roberta Summers
Taylor Family Fund at Fidelity Charitable
Telaka Foundation

CHAMPIONS

\$50,000 to \$99,999

Anonymous (2)

INNOVATORS

\$25,000 to \$49,999

Anonymous
Binnacle Family Foundation
Will and Laurie Danforth Fund at the
Vermont Community Foundation
Birgit Deeds
Dextra Baldwin McGonagle Foundation
Emily Landecker Foundation, Inc.
Gail Osherenko and Oran Young
Park Foundation
Ruth Stewart*
Carter and Lissa Winstanley

STEWARDS

\$10,000 to \$24,999

Anonymous (3)
Peter W. and Ruth H. Brooke*
Concrete Giving Fund at Fidelity
Charitable
Brian and Erika Dade
Davis Conservation Foundation
Jonathan Gibson and Eliza Mabry
Drs. Karen and Peter Hanson
Hidden Hill Giving Fund at Schwab
Charitable
Gale Hurd
Carolyn B. Jackson
Warren and Barry King
Lintilhac Foundation
Charlotte Metcalf*
Pompanoosuc Mills
Clare C. Rimmer*
The Ruml Leithner Family Fund
TechFoundation, Inc.
The Edwin S. Webster Foundation
The Wildwood Foundation

GUARDIANS

\$5,000 to \$9,999

Anonymous
John F. Brooke
William Chester
George Clark*
Richard Dreissigacker and Judy Geer
Steve and Mary Gorman
Paul M. Guyre
Sean Lawson
Stephanie and Philip McCaull
New Hampshire Charitable
Foundation Wellborn Ecology Fund
Robins Foundation
David Roby
Joanna Sturm
Georgena Terry
The Tow Foundation
Wending Fund of Berkshire Taconic
Community Foundation
Wilson Conservation Trust

PROTECTORS

\$1,000 to \$4,999

Anonymous (4)
Charles and Jill Agnew
Clear Skies Fund
Lee Allen
August 23 Fund of the Vermont
Community Foundation
Birds & Beans, LLC
Jiggs Blackburn and Judy Lam*
Bobolink Fund at The Vermont
Community Foundation
Charles E. & Edna T. Brundage
Charitable Science & Wildlife
Conservation Foundation
Carolyn Foundation
Dr. Celia Chen
Katherine Coppock
Gerrit Crosby
Ann B. Day*
Stephen Whitney Dickey, Jr.
Whit and Closey Dickey Fund at New
Hampshire Charitable Foundation*
John and Lucy Douglas
Philip and Deborah Edmundson Fund
at Fidelity Charitable
Elliott Fisher and Nancy Cochran
Emily Fisher and John Alexander
Jim and Susan Ford
Carolyn and Milton Frye
The Estate of Betty Gilbert
Susan Gillotti*
Alan and Kris Graham
Donald Graham and Carol Barr
Great River Hydro
Sandy and Edward Hack*
Hanover Consumer Cooperative
Society, Inc.
Norm and Jane Hanson
Hardy Family Fund at Vermont
Community Foundation
Patricia Highberg
Robert and Lisa Holley
Donna and Peter Hollinger
Hypertherm HOPE Foundation
The Robert K. and A. Joyce Jones
Foundation, Inc.
Sarah Jones
Barbara M. Jordan
Gregory Kaufman and Ellen Seidman
Jonathan Keyes
Peter and Claudia Kinder Fund of the
Vermont Community Foundation
Lake Raponda Environmental
Foundation
Steve Leach and Kathy Kirkland
John and Carolyn Marsh
Winifred McDowell
Gary and Nancy Meffe*
Bill Mercia
Rick and Leslie Morgenthal
The Nashawtuc Charitable Fund
at The Chicago Community
Foundation
Norwich Women's Club
The Nutshells Support Fund at
Vanguard Charitable
The Oakland Foundation
Nancy Osgood
Samuel and Missy Palmisano
Darlene and Ernest Palola

Paris Family Gifting Fund at Advisors
Charitable Gift Fund
Judy Peterson
Nicki Pfister
The Pitchoff Fund at Vanguard
Charitable
Frederick Pratt
Chris and Leslie Rimmer*
Brent R. Rohloff and Lorna J. Kane-Rohloff
Tina Scharf
Roger Schoenbeck
Nicholas Skinner
Suz Stillinger
Stone House Farm Fund of the New
Hampshire Charitable Foundation
The TAG Philanthropic Foundation
Carolyn Tager
Susan and Carl Taylor
Susan Tiholiz
Tom and Charity Tremblay
Anne Valentine
Kathy Van Der Aue
Jon E. and Terri Voigtman
Stan and Jenny Williams Family Fund
of the New Hampshire Charitable
Foundation
Clive Wood and Stella Martin
William C. and Joanna M. Wright
Gail S Yanowitch Account at
Raymond James Charitable
Endowment Fund

CONSERVERS

\$500 to \$999

Clay and Liz Adams
Lee and Carmen Anderson
Flavia Barros
Charlotte and Hal Bill
MaryJane Boland and Daniel Picard
Barbara Butler
Amanda Cannell-Boone and Peter
Boone
David and Barbara Capen
Concept2, Inc.
Faith Corwin
Kevin and Valerie Crowley
Judy Davis
Randy Dettmers
Penelope Doherty
Louis duPont and Ellen Spring
Ruth Einstein and Bryan Pfeiffer
Marvin and Susan Elliott
Alexander Ellis III
Mollie and Henry Fair
Luisa and Charles Finberg
First: Earth Project
Friends of Wolcott Pond
Marilyn R. Fuller
Gillette Hill Fund at Fidelity Charitable
Kate Gillis
Marcia Gnagey
Ann Gormley and Richard Wallace
Billi and Bobby Gosh
David Goudy and Susan Gallagher
Growald Climate Fund
Bill and Roseann Hayes
Hazel Fund at the Vermont
Community Foundation
Heritage Engineering, PC
Hesler Family Fund at Fidelity
Charitable

Susan and Todd Hinderger
Mollie and Tom Hoopes
Peter Isakson and Helen Hamman
Bruce and Anne James
JMM Fund of the Vermont Community
Foundation
Claudia and Peter Kinder
Sally Laughlin*
LOTS Family Fund at Vanguard
Charitable
Tita and Oliver Manice
Dr. Martha McDaniel and Dr.
Stephen Plume
Robert and Gloria McEwen
Barbara McIlroy
Gail and Mark McPeck
Patterson Family Fund at New
Hampshire Charitable Foundation
Mark S. Pecker and Elizabeth A.
McGee
Charles and Elizabeth Phillips
Ned and Cathie Redpath
Renfro-Pihut Family
Judy Richardson
Alyssa Rimmer and Matthew
Henderson
Eric Seyferth
Mike and Jean Smith
Sorg-Vogt Charitable Foundation
Rosemary Spahn and Mike Korkuc
Nancy and Jim Stead
Betsy T. Stevens
Brooke Stevens
Georgia D Valentine Charitable
Account at Schwab Charitable
Marianne and Michael Walsh*
Ann S. Wittpen
Woodstock Gift Account at Fidelity
Charitable

SUPPORTERS

\$100 to \$499

Anonymous (12)
Peg Ackerson
Barbara Adams
Joan Aleshire
Bill Allen
Robert and Nancy Anderson
Steve Antell and Barbara Leaf
Theresa A. Armata
Cheryl Asa
Averill Lakes Association
Tom Aversa
Charles and Diana Bain
Mimi Baird
Leslie Baker-Brown and Cam Brown
Thomas C. Barber
Steve and Sallie Barker
James Barrett
James Barry and Mary Quinton-
Barry
Linda Barry
Christine A. Bartlett
Elizabeth Bassett and John Pane
Robert Bast & Laura Carlsmith Fund
at Schwab Charitable
Chaunce Benedict
Benevity Community Impact Fund
Dale and Jeri Bergdahl
Berger Family Fund at the New
Hampshire Charitable Foundation

DONORS

Thomas Berriman
 Jack Beusmans
 Louis Bigliani and Anne Kremenz
 Sylvia Bingham
 Tom Bjorkman
 Marilyn Blight
 Jann and Jim Block
 Jinny and Clay Block
 Jinx Bloom
 Michael Blust
 Matthew Bode
 Ruth and William Botzow II
 Mistie Boule
 Matthew Bourgault
 Karen Bourque and Robert Horton
 Hillel Brandes
 Margaret Briggs
 Stephen Brown and Metta
 McGarvey
 Chess Brownell
 Susan and Larry Bruce
 William Bundy
 Douglas and Mary Burnham
 Stephen Burtchell
 Patricia Capra
 Simon Carr and Lynn Adams
 Josette and Steve Carter
 Cashdan/Stein Great Grandmother
 Fund at The Vermont Community
 Foundation
 Anne and Mike Cassidy
 Deb and John Caulo
 Rich and Ann Chalmers
 Margaret Cheney and Peter Welch
 Margaret Clark
 Melanie and John Clarke
 Brenda Clarkson
 Alan Cody
 Micki Colbeck
 Jean A. Condon
 Catherine L. Copp
 Karla and Harry Cornelius
 Pete Corradino
 Margaret and Salvatore Corso
 James Corven
 Bill and Ginger Cotten
 Cynthia Crawford
 Frederik and Sophia Crawford
 Anne Cummings
 Ann and Fred Curran
 Milford Cushman and Terri Gregory
 Charles and Ann Davis
 Betsy Day
 Carol Dell
 Jan and Jennifer Dembinski
 Dr. John and Katherine Dick
 Matthew and Monica DiMugno
 Courtney Dobyms
 Domus, Inc.
 Erin Donahue
 Donor Advised Fund at Renaissance
 Charitable
 Donor Advised Fund at Schwab
 Charitable
 Kathleen Duclos
 Judith Dunnan
 David Eberly
 Lois Eby
 Betsy Eccles
 Echo Lake Protective Association
 Norman and Jo-Ann Ecker
 Gordon and Joni Elicker

Wallace Elton
 Ben Emory and Karin Tilberg
 Peter and Nancy Engels
 The Engels Family Fund at Fidelity
 Charitable
 Emme Erdossy
 Margery Erle Fields
 Sabina Ernst
 Everlasting Herb Farm
 Gilda Faccio
 Fairlee Marine
 Family Gift Fund at Fidelity Charitable
 James and Gretchen Farnsworth
 Jim and Cindy Faughnan
 Sarah Fellows
 Ethan Fenn
 Jeffrey and Nancie Fernandez
 Cynthia L. Field
 David and Julie Filiberti
 Ken Finch
 Anne Fines
 Lionel and Ardys Fisher
 Brian T. Fitzgerald
 Gerry Fitzgerald
 William Fitzgerald
 Lynne Fitzhugh
 Polly Foley
 C.J. Frankiewicz*
 Victoria Fraser
 Dirk and Elizabeth Frater
 Keith Frederick
 Olga French
 Conrad and Lea Frey
 Jody Frey
 Friends of Green River Reservoir
 Friends of the Missisquoi National
 Wildlife Refuge
 Veer-Tess Frost
 Gade McArdle LLC
 Ted Gaine
 Charles and Jerrine Gangas
 Jennifer Garber
 Arthur Gardiner
 Marty & Cathy Gardner Fund at
 Schwab Charitable
 Paul Garrigue and Susan Van Kleek
 Louis and Nancy Gaudreau
 Keith and Laurie Gee
 Aliena Gerhard
 Barbara D. Gerstner*
 Barbara Gibbs
 Seth Gibson
 Cathy and Lou Gilbert
 Margaret Gilbert
 Paula A. Gills*
 Linda Gionti
 Mackenzie Goldthwait and
 Douglas Kibbe
 Alice Goodwin
 John and Judy Graham
 Clive Gray
 Janet C. Green
 Jeffrey B. Green
 Susan and Dean Greenberg*
 Bob and Suzanne Griffiths
 Paul Gruhler
 Mark and Susan Guilmette
 Robert Gurwitt and Karen Harris
 Richard and Marcia Haas
 Steve and Sunita Halasz
 James and Cynthia Hall



© KENT MCFARLAND



“VCE makes a big difference every day by helping people like me learn more, care more, want to be community scientists, engage others, and inspire others to care enough to take action too!” —JODY SCHUBERT

Brian A. Harrington Fund at
 The T. Rowe Price Program for
 Charitable Giving
 Mari Harter
 Nicholas and Constance Harvey
 David Hawkins
 Haynes & Garthwaite Architects
 Hebble Giving Account at Schwab
 Charitable
 Ann Hicks
 Richard and Michelle Hicks
 Micah Hill Saste and Sachin Saste
 Libby Hillhouse
 David Hoag
 Judith Hobbs
 Dr. Richard Holmes
 Kit Hood
 Lisa Hoopes and Phil Gutowski
 Robert W. Hoppe
 Susan and Ned Houston
 Becky Howe
 Beth Hunton
 Jim and Sharon Jackson
 Susan James
 Theodore Jastrzembki
 Bob and Shirley Johnson
 Helen Johnson
 Peter Johnson and Claire Lyon
 Rita and Win Johnson
 Amber Jones
 Kyle Jones
 Hank Kaestner
 Ken and Karen Kaliski
 Robert and Sue Kancir
 Janine Kanzler
 Brad Ketover
 Henry Keutmann and Ilene Gipson
 Christopher Kibbe
 Mike and Tawnya Kiernan
 Maeve Kim
 Angus King III
 Karen Kluge* and Terry Rosenmeier

Dr. Mark Knott
 Barbara Kohn
 Jan Komives
 Lake Harvey Association
 Daniel Lambert
 Mary Landon
 Landsberg Marshak Fund at Fidelity
 Charitable
 Ron and Linnea Laperle
 Denis and Nancy LaPointe
 Peter Larsen
 Margie and Tom Latham
 Nicholas Leadley
 Leaf-Antell Fund at Schwab
 Charitable
 William Leeson and Heather Karlson
 Fund at Schwab Charitable
 Lucie Lehmann
 Linda and Steve Lembke
 Tom and Karen Leo
 Peter and Kathy Leonard Community
 Fund at Schwab Charitable
 Sheryl and Fred Lerner Fund at
 Fidelity Charitable
 Rob and Linda Libby
 John and Diane Liccardi
 Brian and Sandi Lincoln
 Jeannie Lindheim
 Katherine Linton
 Richard Littauer
 Craig and Gail Llewellyn
 Scott Longtin
 Lois Lorimer and Bill Sullivan
 Ellen Lovejoy
 Gordon MacFarland*
 Bruce and Pam MacPherson
 Jeanne-Marie Maher
 James and Nancy Malcolm
 Ellen H. Maloney
 Ezra and Sandra Mann
 Meredith Markow
 Jane Marlin

Peter Marshall
 Larry Master
 Mardi and James Mauney
 Kay McCabe and Rod Griffin
 Mark and Mary McGrath
 Bob McGuire
 Thomas McHenry and Elena Phleger
 John and Linde McNamara
 Karin McNeill
 Jennifer Megyesi*
 Will Melton and Eliza Childs
 Peg and Ed Merrens
 Joan Milam and David King
 John Missing
 Nancy Mitiguy
 Jacqueline and Gilles Molleur
 Eric and Jane Molson
 Nancy Money and Paul Thabault
 Peter and Kathleen Montague
 Jack and Karen Morgan
 Sharon and Jim Morgan
 Jim Morris
 Larry Morris
 Elizabeth Morse
 The Richard B & Alice B Morse
 Giving Fund
 Susan Morse
 David Moulton
 John T. Mudge
 Ronald and Denise Mura
 Kathleen Murphy
 Holly Nash Wolff
 Candace and Eugene Nattie
 Grace Nelson
 Martha Nelson
 Phyl Newbeck
 Catharine and David Newbury
 Blair Nikula
 Louise Nunan Taylor
 Marne Onderdonk
 James E. Osborn III
 Yosef Osheyack and Annie Ashley
 Barbara Otsuka
 Otter Creek Audubon Society
 Ann Owen
 Gill Page
 Michael Palombo
 Worth Parker and Mary Margaret
 Andrews
 Jan Parsons
 Patno Holladay Giving Trust at
 Morgan Stanley GIFT
 Peacham Pond Association, Inc.
 Matt Peake and Leslie Goldman
 Norene G. Peck
 Vicki and John Peiffer
 Dr. Robert Perrin and Jane Perrin
 Dave and Ellie Peters
 Chris and Nissa Petrak
 Karl Pfeiffer
 Lisa Phelps
 Jane and John Phipps
 Ann Pibal and Colin Brant
 Roy W. Pilcher*
 Carol Pinney
 Jim and Faith Pivrotto
 Tim and Brenda Plastridge
 Michael and Barbara Powers
 Paul Prappas and Carolee Colter
 Hugh and Rosanne Putnam
 Alan Quackenbush

Quechee Garden Club
 Owen Rachampbell
 Carol and George Ramsayer
 Joan Randall*
 Sharon Randall
 John Rathjen
 Nancy & David Ratner Donor-Advised
 Fund at Fidelity Charitable
 Ann and Tip Roy
 Jeanne and Jon Raymond
 Susan and Martin Reiter
 Dr. Leonard Reitsma
 Virginia Renfrew
 Craig Repasz
 Kathleen Rhinesmith
 Rhode Charitable Fund at Fidelity
 Charitable
 Charles and Jeanne Richards
 Zoe Richards and Joshua Brown
 Ben and Maggie Rimmer
 Dave and Mary Rimmer
 Sharon Roa
 Jennie and Gil Robbins
 Harry Roberts and Elizabeth Howard
 Pat Robins and Lisa Schamberg
 Anita Rogerson
 Gareth and Sara Ross
 Jan Roy and Steven Young
 Mr. and Mrs. James W. Runcie
 Carl and Deb Runge
 Christina Ryan
 Susan Saferstein
 Robert Salter
 David and Ann Sargent
 Michael Sargent
 Helen and Guerrino Savio
 James Sawyer
 William B. Scarborough, Jr.
 Molly P. Scheu
 Nick Scheu
 Mark and Jennifer Schiffman
 Deb Schoch
 Taj Schottland
 Lisa Schukei
 Barrie and Al Schultheis
 Andrew Schulz
 Sarah Schwaegler
 David Scott
 Wayne Scott
 Diana and Jerry Senturia
 Kim Seward
 Nat and Angela Shambaugh
 Kent Shaw and Jean O'Conor
 Shell Oil Co. Foundation
 Matching Gifts
 Shrewsbury Outing Club
 Peter and Anne Silberfarb
 Scott Sillett
 Peter and Jacqueline Sinclair
 Barrett Singer
 Carla Skinder*
 Dale Smeltzer
 Marisa Smith
 J. Paul Sokal
 Harold and Jean Somerset
 Ms. Jane Sorensen
 Eric Sorensen and
 Cathy Kashanski
 John Sowles
 Stephanie Spencer
 Lynn Spensley and Erika de Papp

Gus and Cameron Speth
 John and Nomi Stadler Fund at
 Schwab Charitable
 Jen Stamp and Tom Anderson*
 Peter and Mary Stangel*
 Gary and Kathleen Starr
 Barbara Stearns
 John Stein
 Lee Steppacher
 Valerie Stori
 Joan Strachan
 Skip and Marilyn Sturman
 Robert Stymeist and Martha Steele
 Susan Sussman and Scudder Parker
 Ned Swanberg and Tory Rhodin
 David and Sue Taylor
 Frederic Taylor
 Tim and Janet Taylor
 Rollin S. Tebbetts
 Nancy Tehan
 Three Tomatoes Trattoria
 Doug Tiff and Bonnie MacAdam
 Charlie and Mima Tipper
 David Tobias and Elizabeth Micheels
 Laura and William Tobin
 Patty and Jim Tobin
 Jim and Francie Tolan
 Jack and Ellen Travelstead
 Steve Trombulak
 Susan W. Tucker
 The Tucker-Galarneau Fund at
 Fidelity Charitable
 Erin and John Tunncliffe
 Jacquelyn Tuxill
 Upper Valley Food Coop
 Rod and Betty Vallee
 Karen VanDoren
 Ross Virginia and Sandra
 Virginia-Chase
 Steve Voigt
 George and Patricia von Trapp
 Amy and Tom Wagner
 Kit Walker and Rob Hofmann
 Clare Walker Leslie and David Leslie
 Richard A. Warren
 Christine Warsaw
 Jim and Tricia Wasserman
 Thomas and Paulette Watson
 Mary and Bernie Waugh*
 John Weeks
 Karen Weinberg
 Peter Weston
 Richard and Suzanne Whiting
 Donna M. Wiegand-Bicknell
 Ron and Norma Wiesen
 Marianne and Allon Wildgust
 Katherine Wilkerson
 Andrew Williams
 Reeve Williams and
 Sandra Anderson
 Sandy and Tim Wilmot
 Sally Wilson
 Anthony Witte
 George C. Wood and
 Nina F. Weisbord
 Joan Wood
 Willis and Tina Wood
 Elizabeth Woods
 Michael D. Wormser
 Penny and Peter Wright
 Sunny and Mark Wright

Paula Yankauskas and Dale Martin
 Barb Zander and Dennis Casey
 Rick and Susan Zellweger
 Barbara and Mike Zimmerman
 Zimmerman Family
 Thomas Ziobrowski

CONTRIBUTORS

Up to \$99
 Anonymous (18)
 AmazonSmile Foundation
 Kate Abrams
 Kathleen Achor
 Emily Aiken
 Emilie and Stuart Alexander
 Judith L. Allard
 Ted Allen
 Drs. Elizabeth Moen Alton and
 Raymond D. Barnes*
 Julia Alvarez and Bill Eichner
 Carrie Armenio
 Jim and Cheryl Arney
 Jean Arrowsmith
 Joy Axten
 Tina Barney and Sara White
 Beau Beaulieu
 Cassandra Beauvais
 Eve Benen
 Molly Bidwell
 Elizabeth Billings and Michael Sacca
 Marsha Booker
 Bobbie Jean Booth
 Margot Borden^
 Jonathan Bouton
 Hollie Bowen
 Richard and Nicole Boyden
 Martina Breed
 Colleen and Vinnie Brennan
 Katharine Britton
 John Brodhead and Gina Campoli
 Carol and Will Brooke-deBock
 Barbara Brosnan and John
 Chamberlain
 Beverly Brown
 Kevin and Lucinda Brown
 Rob Buck
 Holly Bull and John Wall
 Ella Burnham
 Patricia Campbell
 Carol Cantwell
 Bodo Carey and Betsy Gladding
 Marina Carleton
 Judy Carpenter and Karl Stein
 Sara Cavin
 Charles and Kathryn Chamberlain
 Rob and Jan Chapman
 Paul Chebator
 Claire Chomentowski
 Michael Choukas Jr.
 Virginia Clammer
 Robert Clark
 Clattenburg Family Fund at Fidelity
 Charitable
 Natalie Cohen
 Abby Colihan
 Jane and John Conner
 Ken Copenhaver
 Tim and Sarah Cowan
 Bruce and Cheryl Cox
 Maura Crandall
 Ruth Crawford

DONORS

Ellen Cronan
 Jeff and Lisa Crouse
 William and Marcy Cummings
 James Curtis
 Priscilla Daggett
 Anne Cary Dannenberg
 Matt Darrow
 Victor Davich
 Raven Davis
 Kimberley Desjardins
 Linda Di Sante and Jim Schweithelm
 Donna Dickerson
 Douglas and Valerie Dillon
 Mary Dodge
 Katherine C. Donahue
 Terri Donovan and Peter Jones
 Idoliné Duke
 John and Harriet Dumas
 Charles Dutelle
 Janet Dyer
 John Echternach and Judith Englander
 Elizabeth Edgerton
 Jean Elliott
 Peg Elmer Hough
 Evergreen Erb
 Allyson Evans
 Marc and Peggy Faucher
 Karen Fiebig*
 Soryun and Howard Fitzpatrick
 Bruce K. Flewelling
 Ray Fluck and Ginny Kauffman
 Pat Folsom
 Denis Fortin
 David and Valerie French
 Jonathan Frishtick and Holly Glick
 Holly Fulton
 Connell and Nancy Gallagher
 Gardell Family
 Cate Garvey*
 Liz and Alan Gee
 Allison Gergely
 Trudy Gerlach
 Anna Gerretson*
 Giersch Family Charitable Gift Fund
 at Schwab Charitable
 Ed and Sue Gilbert
 Jim Gold and Penny McConnell
 Robert and Mary Gold
 Raymond Gonda
 Michael and Rebecca Gonyaw
 Emily Gordon
 Andrea Gould and Charlie Barasch
 Roberta Gowing
 Peter Grace
 Jim Graves and Kathy Doyle
 Michael Gray and Ellie Hayes
 Erica Green
 Jake and Liz Guest
 Dr. Thomas Gutheil
 The Haddock Family
 Sheila Halpin
 Barbara Hamilton
 Jim and Marilyn Hand
 Greg Hanisek
 Patricia Hanson
 Thomas Hargy
 Joan Harlowe
 Mary Harry
 Thomas Hasson
 David Hathaway and Carolyn Greene

Blythe Hazellief
 Laurie-Helise and Ronald Heijn
 Don and Bev Heise
 Lorna and Layne Higgs
 Holly Higinbotham
 Charles and Julie Hill
 Nathan and Monica Hill
 Beth Hindmarsh
 Sarah Hofmann
 Frederick and Joyce Holmes
 Paul Holmes
 Tom Honigford and Sharon O'Connor
 Jamie and Nancy Horton
 Susan Howard
 Linda Huebner*
 Rob and Doris Humphries
 Ann Hunsicker
 Janice Jeffords
 Donley Johnson
 Roxane Johnson De Lear
 Kathryn Jorgensen
 Karol Jane Josselyn
 Rachel Kane
 Nelson Kasfir and Liz Blum
 Alexander Katz
 Thomas Kearney
 Kearney & Son Carpentry
 Susan Kelly
 Daniel Kelsey
 Elizabeth Kennedy
 Ruth Kennedy
 Rusty Kent and Deb Birenbaum
 Eileen Kerkes
 Meredith Kimbell
 Mary H. Kintner
 Lindsay Knowlton
 Ron and Janet Kolar
 Kathleen and William Kruesi
 Linda and Russell Kulas
 Deb Kunhardt
 Kim Kurak
 Jim LaBelle and Sue Fritz
 Marilyn B. Lagrow
 Lake Groton Association
 William Landesman and Kristen Ross
 Richard Langdon and Elaine Lussier-Langdon
 Deborah Laramie
 Anthea Lavallee
 Miriam Lawrence
 Liz Lee
 Patricia Lee
 Armelle and Mitchell LesCarbeau
 Flo Levin
 Marcia Liotard
 Trevor Lloyd-Evans and Linda Leddy
 James Lonergan
 Patricia Long
 Andrew and Virginia Longacre
 Jennifer MacCullough
 Jane MacKugler
 Scott MacLachlan
 Wally Malley and Garet Allen-Malley
 Elaine Manghi-Buck and George Buck
 Sally and Jon Margolis
 Terry Marron
 Kat Masback
 Edgar and Nancy Matthews
 Kaitlin McDonald
 Jerry and Gretchen McFarland
 Dan McKibben



© ORAHEMOORE



“I admire your tireless quest to protect the environment through quality research and community science.”

—MARY WAUGH

Elisabeth McLane
 Christy and Marc Mihaly
 Donald H. Miller, Ph.D
 Erin Burke Mills
 Bill and Sue Minard
 Paula Minch
 Irina Mirskyzayas
 Barbara Mitchell
 Cathy Molloy
 Karen C. Mook
 Lisa Moore
 Diane and Ross Morgan
 Kevin and Polly Murdough
 Lucia A. Murphy
 Sue-Ellen Myers
 Marc Nadel and Nancy Nadel
 Roxann Nickerson
 Jeannie Marie Nicklas
 Louanne Nielsen
 Craig Nolan
 Joanne Norton
 Eric Nuse
 Timothy and Diane O'Donoghue
 Gloria Oest
 Dave and Kay Oles
 Kate Olgiate and Dory Rice
 Rodney and Meghan Olsen
 Elinor Osborn
 Joseph and Joyce Ouellette
 Bill and Hannelore Overgard
 Chandler and Madonna Parker
 Dian Parker
 Robert Parker
 Dr. Thomas Parker
 Phyllis Parrott
 Roger F. Pasquier
 Jake Pendleton and Terry Cantor
 Laurel and Patrick Persico
 Susan Peterson
 Martha Pfeiffer
 Carlos and Christine Pinkham
 Stephen and Rebecca Powell
 Craig and Donna Powers
 Ida Pucino
 Lisa and Van Purcell
 Margaret Ramsdell
 Barbara Reed
 Byron Reed

Dave and Sarah Reeves
 Cordelia Reimers
 Wanda Rice
 Carolyn Rich
 Kenneth Rich
 Terry Rich
 Carol Yarnell
 Pip Richens
 Jackie and Rich Menge
 Eileen Riley
 Laura Robertson and Kurt Behrens
 Barbara Roggeveen
 Christopher Rohan
 Elisabeth Rondinone
 Kathryn S. Roosa
 David Rosen and Carol Claus
 Alan A. Rozycki
 John Sabotka
 Jeff Salisbury and Michele Tulis
 David R. Scarborough
 Jody and Jim Schubert
 Nathaniel Sharp
 Andrew and Jennifer Shaw
 Lisa Sicotte and Kenneth Alberti
 William Slocum
 Dwaine Smith and Susan Pelkey Smith
 Robert Smith
 Ronald and Lisa Smith
 Derick Snare
 Barbara Snook
 Diane G. Snyder
 Peter Solberg and Lisa Furmanski
 Christine Soychak
 Norma C. Spaulding
 Patty Spencer
 Laurie Spry
 Jon and Cindy Stableford
 Kim Stewart
 Lee and Mary Stewart
 Kate Summey Frank
 Rebecca Talcott
 Louise C. Thompson
 Paula Thompson
 Peter and Thelma Thompson
 Andrew Toepfer
 Tim Traver and Delia Clark
 Rebecca Trudeau

BICKNELL'S LEGACY SOCIETY

Bob and Linda Tucker
Melinda Underwood
Ellen Valley
Ann Vanneman
Alison Violette and Ben Litchfield
Melissa Volansky
Lisa von Kann
Alison Wagner
Mike and Linda Wakefield
Paul and Jane Watson
Kathy and Scott Weaver
David L. Webb
Mary Lou Webster
Laura Weickert
Libby Welch
Diane J. Wessel
Sue Wetmore
Glenelle Wetzel
Richard and Suzie Wheeler
Thomas and Anne White
Patty Wiley
Kate Williams
Dottie and Charlie Windisch
Mike and Kira Winslow
Charles Wohlers
Ms. Wendy Wolfe
Woodbury Lake Association
Emilie Woodward
Gail Yanowitch
Shirley Zundell

SUSTAINERS

Sustainers support VCE throughout the year via monthly or quarterly donations.

Joan Aleshire
Chaunce Benedict
Paul Chebator
Ken Copenhaver
Bill and Ginger Cotten
Cynthia Crawford
Anne Cummings
David Eberly
Soryun and Howard Fitzpatrick
Keith and Laurie Gee
Aliena Gerhard
Raymond Gonda
Emily Gordon
Barbara Hamilton
Micah Hill Saste and Sachin Saste
Donna and Peter Hollinger
Becky Howe
Roxane Johnson De Lear
Amber Jones
Kim Kurak
Jane MacKugler
Tita and Oliver Manice
Blair Nikula
Nancy Osgood
Jeanne and Jon Raymond
Renfro-Pihut Family
Alyssa Rimmer and Matthew Henderson
Ben and Maggie Rimmer
Christopher Rohan
Christina Ryan
Lisa Schukei
Wayne Scott
Nathaniel Sharp
Dr. Scott Sillett
Lynn Spensley and Erika de Papp

VCE's legacy giving program includes those who have designated a planned gift to VCE. Such gifts include bequests, beneficiary designations for life insurance policies or retirement funds, planned gifts of real estate, and life-income gifts such as annuities. VCE staff can help facilitate these choices and provide guidance as needed. Although the types and scales of their planned gifts vary greatly, these donors share an abiding commitment to ensuring that VCE's wildlife conservation work will continue long into the future.

Anonymous (9)
Drs. Elizabeth Moen Alton and Raymond D. Barnes
Peter W. and Ruth H. Brooke
George Clark
Colm Darcy and Carol Radic
Ann B. Day
Karen Fiebig
C.J. Frankiewicz
Cate Garvey
Anna Gerretson
Barbara D. Gerstner
Al[^] and Susan Gillotti
Paula A. Gills

Annette Gosnell
Lynda Graham-Barber and David Hunter
Susan[^] and Dean Greenberg
Edward Hack
Linda Huebner
Jared and Songmei Keyes
Karen Kluge
Judy Lam and Jiggs Blackburn
Sally Laughlin
Dan and Jaye Lindner
Gordon MacFarland
Gary and Nancy Meffe
Jennifer Megyesi

Charlotte S. Metcalf
Roy W. Pilcher
Joan Randall
Charles Jr.[^] and Clare C. Rimmer
Chris and Leslie Rimmer
Elizabeth Ruml
Carla Skinder
Jen Stamp and Thomas Anderson
Peter and Mary Stangel
Ruth Stewart
Marianne and Michael Walsh
Mary and Bernie Waugh

Gus and Cameron Speth
Joanna Sturm
Tim and Janet Taylor
Laura and William Tobin
Jacquelyn Tuxill
Ann S. Wittpenn
Charles Wohlers
Clive Wood and Stella Martin
Emilie Woodward

GIFTS IN HONOR

In honor of Ann Buck
Victor Davich
In honor of Hal D. Casey
Barb Zander and Dennis Casey
In honor of William Cochran
Elliott Fisher and Nancy Cochran
In honor of Mary Daly
Diana and Jerry Senturia
In honor of Closey Dickey
Ann Gormley and Richard Wallace
In honor of Kathleen Doyle and James Graves
Anonymous
In honor of Harriet Duncan
Susan and Todd Hindinger
In honor of Nancy Fitzpatrick
Soryun and Howard Fitzpatrick
In honor of Ben Fletcher, Salamander King
Erin Mills
In honor of Chuck Gangas
Kathleen Rhinesmith
In Honor of Anna Gerretson
Owen Rachampbell
In honor of the Green Mountain Goatsuckers
Bill and Roseann Hayes
In honor of Eric Hanson
Jim and Cheryl Arney
Virginia Clammer
Betsy Day
Carol Dell

Meredith Kimbell
Dian Parker
John Rathjen
Susan and Carl Taylor
Jim and Tricia Wasserman
In honor of Eric Hanson and the volunteers who work to keep loons safe and healthy
Barbara Stearns
In honor of Jason Hill
Micah Hill Saste and Sachin Saste
In honor of Susan Hindinger
Margaret and Salvatore Corso
Holly Nash Wolff
Erin and John Tunnicliffe
In honor of Carol Hulley
Barbara Snook
In Honor of Patricia Jarvis
Kevin and Polly Murdough
In honor of Susan Kleiber
Molly Bidwell
In honor of Tom Liston
Christopher Rohan
In honor of Kent McFarland
The Richard B & Alice B Morse Giving Fund
In honor of Lucia Murphy
Kathleen Murphy
In Honor of Dean Peterson
Henry Keutmann and Ilene Gipson
In honor of David Phelps
Lisa Phelps
In honor of Roy Pilcher
Sue Wetmore
In Honor of Owen Rachampbell
Anna Gerretson
In honor of Chris Rimmer
Anonymous (7)
Clay and Liz Adams
Bill Allen
Leslie Baker-Brown and Cam Brown
Jiggs Blackburn and Judy Lam
MaryJane Boland and Daniel Picard

Margot Borden[^]
Mistie Boule
Karen Bourque and Robert Horton
Margaret Briggs
Barbara Butler
Amanda Cannell-Boone and Peter Boone
Deb and John Caulo
William Chester
George Clark
Margaret Clark
Pete Corradino
Ellen Cronan
Gerrit Crosby
Ann and Fred Curran
Brian and Erika Dade
Will and Laurie Danforth Fund at the Vermont Community Foundation
Ann B. Day
Birgit Deeds
Randy Dettmers
Courtney Dobyms
Louis duPont and Ellen Spring
Betsy Eccles
Marvin and Susan Elliott
Wallace Elton
Evergreen Erb
Mollie and Henry Fair
Emily Fisher and John Alexander
Brian T. Fitzgerald
Jim and Susan Ford
Dirk and Elizabeth Frater
Olga French
Carolyn and Milton Frye
Gade McArdle LLC
Ted Gaine
Charles and Jerrine Gangas
Seth Gibson
Susan Gillotti
Paula A. Gills
Marcia Gnagey

DONORS

Billi and Bobby Gosh
 Annette Gosnell
 Susan^ and Dean Greenberg
 Robert Gurwitt and Karen Harris
 Sandy and Edward Hack
 Steve and Sunita Halasz
 Norm and Jane Hanson
 Hardy Family Fund at Vermont
 Community Foundation
 Hidden Hill Giving Fund at
 Schwab Charitable
 David Hoag
 Donna and Peter Hollinger
 Lisa Hoopes and Phil Gutowski
 Mollie and Tom Hoopes
 Carolyn B. Jackson
 JMM Fund of the Vermont
 Community Foundation
 Kyle Jones
 The Robert K. and A. Joyce Jones
 Foundation, Inc.
 Gregory Kaufman and Ellen
 Seidman
 Thomas Kearney
 Warren and Barry King
 Lindsay Knowlton
 Emily Landecker Foundation, Inc.
 Sally Laughlin
 Sean Lawson
 Steve Leach and Kathy Kirkland
 Tom and Karen Leo
 Trevor Lloyd-Evans and Linda
 Leddy
 Bruce and Pam MacPherson
 John and Carolyn Marsh
 Larry Master
 Stephanie and Philip McCaull
 Gail and Mark McPeck
 Gary and Nancy Meffe
 Bill Mercia
 Charlotte Metcalf
 Jack and Karen Morgan
 Larry Morris
 Elizabeth Morse
 Yosef Osheyack and Annie Ashley
 Darlene and Ernest Palola
 Worth Parker and Mary Margaret
 Andrews
 Mark S. Pecker and Elizabeth A.
 McGee
 Vicki and John Peiffer
 Judy Peterson
 Nicki Pfister
 Roy W. Pilcher
 Carol Pinney
 Ann and Tip Ray
 Ned and Cathie Redpath
 Judy Richardson
 Alyssa Rimmer and Matthew
 Henderson
 Ben and Maggie Rimmer
 Clare C. Rimmer
 Dave and Mary Rimmer
 Leslie Rimmer
 Anita Rogerson
 The Ruml Leithner Family Fund at
 Vanguard Charitable
 Tina Scharf
 Li Shen
 Carla Skinder

Marisa Smith
 Mike and Jean Smith
 Eric Sorenson and
 Cathy Kashanski
 Gus and Cameron Speth
 Betsy T. Stevens
 Valerie Stori
 Joan Strachan
 Telaka Foundation
 Steve Trombulak
 Erin and John Tunnicliffe
 Kathy Van Der Aue
 Clare Walker Leslie and David Leslie
 Marianne and Michael Walsh
 Christine Warsaw
 Reeve Williams and Sandra
 Anderson
 Ann S. Wittpenn
 In honor of Leslie Rimmer
 Sara Cavin
 In honor of Jason Saltman
 Kim Kurak
 In honor of Harry Saxon
 Scott Longtin
 In honor of Emmett Sirjane
 Anonymous
 In honor of Elizabeth Smith
 Jim and Francie Tolan
 In honor of Robert Smith
 Jim and Francie Tolan
 In honor of Peter Stangel
 Jon E. and Terri Voigtman
 In honor of David Tobias
 The Tow Foundation
 In honor of VCE staff
 Nancy Osgood
 Jim and Francie Tolan
 In honor of Don and Libby Welch
 Kate Gillis
 In honor of Carol Whitehouse
 Daniel Lambert

GIFTS IN REMEMBRANCE

In memory of all the loon chicks who
 didn't get to fledge
 Jane MacKugler
 In memory of Will and Jane Curtis
 Katherine C. Donahue
 In memory of Phil Davis
 Wally Malley and Garet
 Allen-Malley
 In memory of Alexander Dickey
 John and Lucy Douglas
 Nick Scheu
 In memory of Closey Dickey
 Molly P. Scheu
 Nick Scheu
 In memory of Rosemarie Dougherty
 Sylvia Bingham
 In memory of Patricia W. Eckels
 Keith and Laurie Gee
 In memory of Abbott T. Fenn
 Ethan Fenn
 In memory of Ken and Ramona
 Flewelling
 Bruce K. Flewelling
 In memory of Charles P. Giersch
 Giersch Family Charitable Gift
 Fund at Schwab Charitable
 In Memory of Martha Lamb

Montgomery Gordon
 Emily Gordon
 In memory of Susan Greenberg
 John and Harriet Dumas
 Margery Erle Fields
 Mardi and James Mauney
 Thomas and Anne White
 In memory of Richard A. Harter
 Mari Harter
 In memory of Allen Hood
 Kit Hood
 In memory of Dorothy Johnson
 Donna M. Wiegand-Bicknell
 In memory of Jamie Kanzler
 Janine Kanzler
 In memory of Barbara Lewis
 Judith L. Allard
 In memory of Marjorie Linton
 Katherine Linton
 In memory of Carolyn E. Lorman
 Jean A. Condon
 In memory of Robert and Dora Lovely
 Stephen Burtchell
 In memory of my Mom, who brought
 me to Vermont
 Roxane Johnson De Lear
 In memory of Judy Oro
 Peacham Pond Association, Inc.
 In memory of George W. Peck IV
 Norene G. Peck
 In memory of Connie Peterson
 Emilie Woodward
 In memory of Pat and Bill Renfro
 Renfro-Pihut Family
 In memory of Ted Richards
 Paula A. Gills
 In memory of Charles P. Rimmer and
 Lisa B. Rimmer
 Alyssa Rimmer and Matthew
 Henderson
 Ben and Maggie Rimmer
 Chris and Leslie Rimmer
 Dave and Mary Rimmer
 Joan Strachan
 Reeve Williams and Sandra
 Anderson
 In memory of Danny Shand
 Anonymous
 In memory of Lewis Shattuck
 Kevin and Valerie Crowley
 In memory of Linere Silloway
 Holly Bull and John Wall
 In memory of Raymond Swift
 Robert Parker
 In memory of Elizabeth H. Valentine
 Anonymous
 In memory of Nancy Walker
 Kit Walker and Rob Hofmann
 In memory of Rebecca Williams
 Charlotte and Hal Bill

GIFTS TO THE ALEXANDER DICKEY CONSERVATION INTERNSHIP FUND

Berger Family Fund at the New
 Hampshire Charitable Foundation
 Stephen Whitney Dickey, Jr.
 John and Lucy Douglas
 Nick Scheu

PARTNERS

VCE thanks you!

BUSINESSES

Birds & Beans Coffee
 Coaticook River Water Power
 Company
 Great Bay Hydro
 Great River Hydro
 Green Mountain Power
 Hardwick Electric Department
 Morrisville Water and Light
 Vail Resort

CONSORTIA & PARTNERSHIPS

Automated Insect Monitoring Group
 (AMI)
 Biodiversity Vermont to Consortia &
 Partnerships eButterfly.org
 Forest Ecosystem Monitoring
 Cooperative
 International Bicknell's Thrush
 Conservation Group

FEDERAL - UNITED STATES

Green Mountain National Forest
 National Park Service
 U.S. Dept. of Defense Legacy
 Program
 U.S. Fish & Wildlife Service
 U.S. Forest Service Office of
 International Programs
 U.S. Geological Survey
 White Mountain National Forest

INTERNATIONAL

Canadian Forest Service-Atlantic
 Forestry Centre (Canada)
 Centro Oriental de Ecosistemas y
 Biodiversidad (Cuba)
 Consorcio Ambiental Dominicano
 (Dominican Republic)
 Environment and Climate Change
 Canada
 Global Biodiversity Information
 Facility (International)
 Grupo Jaragua (Dominican Republic)
 Insectarium Montreal (Canada)
 Mila - Quebec Artificial Intelligence
 Institute
 Space for Life in Montreal (Canada)
 UK Centre for Ecology and
 Hydrology

NONPROFIT - DOMESTIC

Adirondack Center for Loon
 Conservation
 Adirondack Mountain Club
 Appalachian Mountain Club
 Ascutney Mountain Audubon Society
 Audubon Vermont
 Avian Haven
 BirdsCaribbean
 Birds of Vermont Museum
 California Academy of Sciences
 Cornell Lab of Ornithology

FINANCIALS

Corporation for National and Community Service (AmeriCorps)
 Friends of the Missisquoi National Wildlife Range
 Green Mountain Audubon Society
 Loon Preservation Committee
 Manomet Inc.
 Merck Forest & Farmland Center
 National Aviary
 National Geographic Society
 New Hampshire Audubon
 North Branch Nature Center
 Northeast Kingdom Audubon Society
 NY Natural Heritage Program
 Otter Creek Audubon Society
 Sociedad Ornitologica Puertorriquena Inc.
 Southern Vermont Natural History Museum
 The Nature Conservancy
 Vermont Community Foundation
 Vermont Entomological Society
 Vermont Institute of Natural Science
 Vermont Land Trust
 Vermont Reptile and Amphibian Atlas

STATE - MAINE

Maine Dept of Inland Fisheries & Wildlife

STATE - NEW YORK

N.Y.S. Dept of Environmental Conservation

STATE - VERMONT

Vermont Agency of Transportation
 Vermont Department of Environmental Conservation
 Vermont Fish & Wildlife Department
 Vermont Forests, Parks & Recreation Department

MUNICIPAL

Barre Public Works Department

UNIVERSITIES

Aarhus University (Denmark)
 Alabama Museum of Natural History - Odonata Central
 McGill University
 SUNY New Paltz
 Tufts University Wildlife Veterinary Clinic
 University of Arizona
 Université Laval (Canada)
 University of New Hampshire
 University of Ottawa
 Université de Sherbrooke (Canada)
 University of Vermont
 University of Vermont Extension
 University of Vermont Natura History Museum
 University of Vermont Spatial Analysis Lab

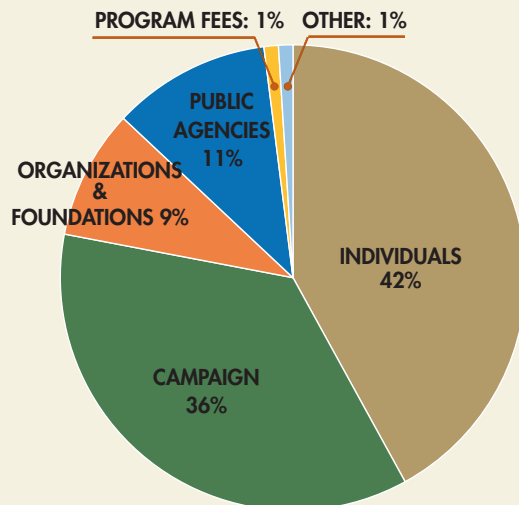
STATEMENT OF FINANCIAL POSITION

	AS OF 12/31/22	AS OF 12/31/21
ASSETS		
CURRENT ASSETS		
CASH	\$813,840	\$1,019,812
CONTRIBUTION RECEIVABLES	44,081	56,355
GRANT RECEIVABLES	222,560	178,290
PREPAID EXPENSES	32,489	25,756
CURRENT PORTION PLEDGES RECEIVABLE	182,461	202,000
TOTAL CURRENT ASSETS	1,295,431	1,482,213
INVESTMENTS	3,695,987	2,791,325
EQUIPMENT, VEHICLE, WEB, NET	864,470	45,719
PLEDGES RECEIVABLE, LESS CURRENT PORTION SHOWN ABOVE	58,750	373,563
TOTAL ASSETS	\$5,914,638	\$4,692,819
LIABILITIES AND NET ASSETS		
CURRENT LIABILITIES		
ACCOUNTS PAYABLE	52,490	63,237
ACCRUED PAYROLL & RELATED TAXES	148,572	129,636
CURRENT PORTION OF CAPITAL LEASE OBLIGATION	—	1,181
CURRENT PORTION OF LONG TERM DEBT	10,606	—
TOTAL CURRENT LIABILITIES	211,668	194,053
LONG-TERM DEBT, LESS CURRENT PORTION ABOVE	579,859	—
TOTAL LIABILITIES	\$791,527	\$194,053
NET ASSETS		
WITHOUT DONOR RESTRICTIONS	4,353,209	3,553,786
WITH DONOR RESTRICTIONS-TIME OR PURPOSE	769,902	944,981
TOTAL NET ASSETS	\$5,123,111	\$4,498,766
TOTAL LIABILITIES & NET ASSETS	\$5,914,638	\$4,692,819

STATEMENT OF ACTIVITIES

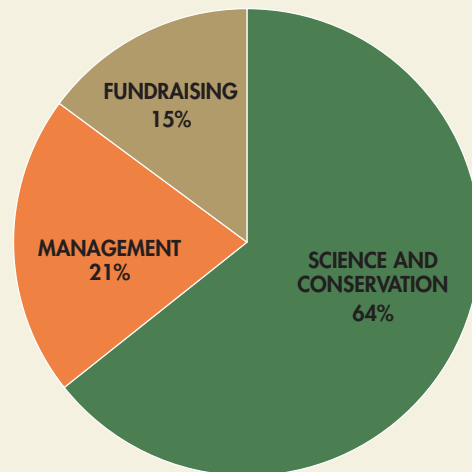
2022 REVENUE

PUBLIC AGENCIES	\$273,301
ORGANIZATIONS/FOUNDATIONS	230,659
INDIVIDUALS	1,079,232
CAMPAIGN	933,317
PROGRAM FEES	29,040
OTHER	19,182
TOTAL REVENUE	\$2,564,731



2022 EXPENSES

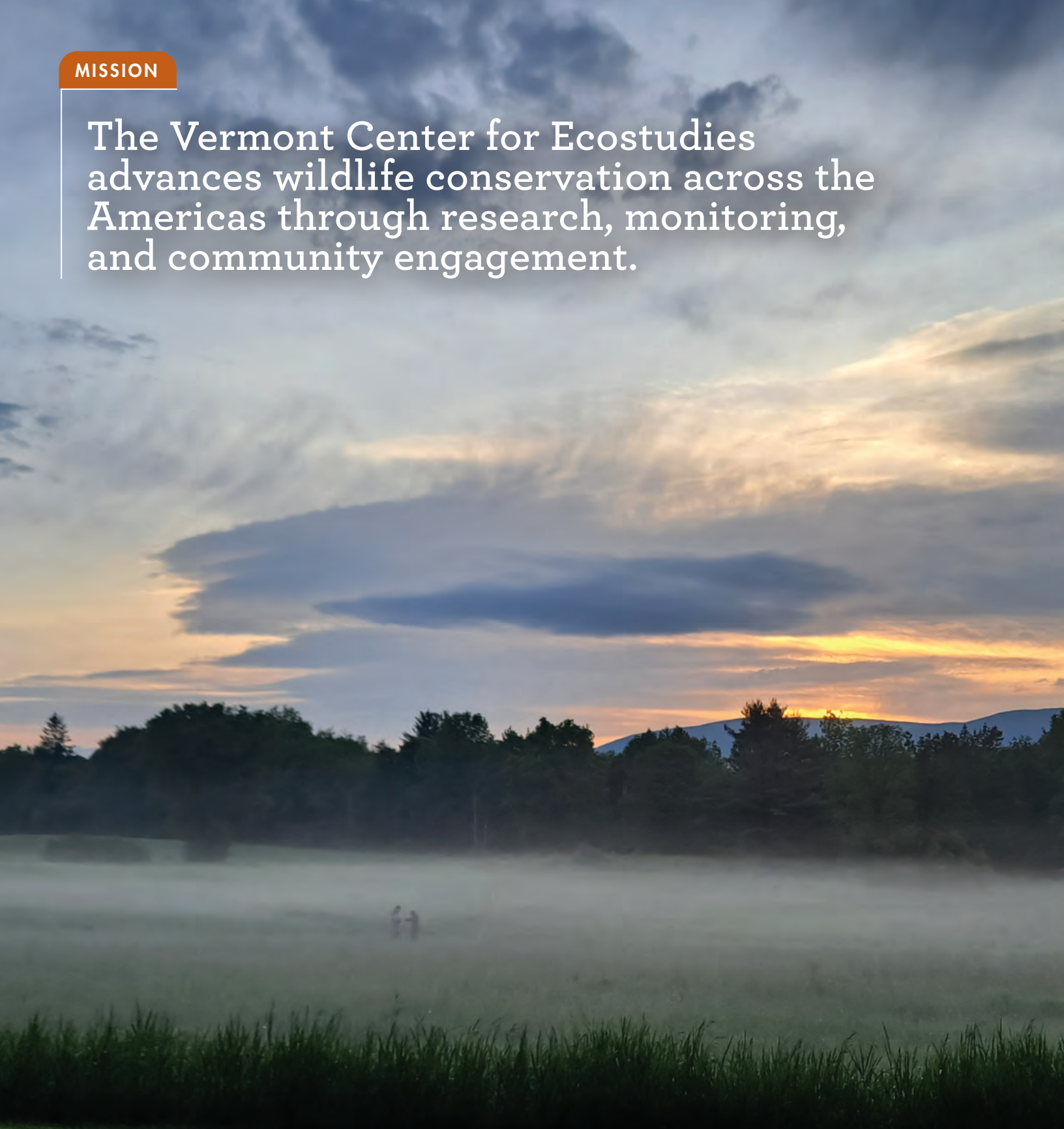
SCIENCE & CONSERVATION	\$1,212,508
MANAGEMENT	392,503
FUNDRAISING	280,377
TOTAL EXPENSES	\$1,885,388



The figures that appear in the financial summary shown above have been audited and received an unqualified opinion.

MISSION

The Vermont Center for Ecostudies advances wildlife conservation across the Americas through research, monitoring, and community engagement.



Eastern Meadowlark study site at dawn



**VERMONT CENTER
FOR ECOSTUDIES**

PO BOX 420, NORWICH, VT 05055 | 802-649-1431

VTECOSTUDIES.ORG

VCE IS A 501(C)(3) NONPROFIT ORGANIZATION. CONTRIBUTIONS ARE TAX DEDUCTIBLE TO THE FULL EXTENT OF THE LAW.



Printed on recycled paper