

Waꞑ de t'iꞑmiꞑ

"It Grows Here"



Native Plants of the Tahoe Basin

Wašišiw Guwaꞑ

"Workings of the people"



Šugila?ci (shoo-gil-ah-tsee)
Arrowleaf, Balsamroot, Sunflower
Balsamorhiza Sagittata



Šugil (shoo-gill)
Wooly Mule's Ear
Wyethia Mallis



Du·ni (Dune-ee)
Golden Brodiaea
Brodiaea ixioides var. lugens



Ma·hal (Mah-hall)
White brodiaea
Brodiaea hycinina



Ko·kši (Ko-k-she)
Lily, Mariposa Lily
Calochotus



Bo·po (Bohpo)
Rabbitbrush
Chrysothamnus



Silaćahu (silah-tza-hoo)
Tiger Lily
Lilium Parvum



Mahat'alal (Ma-hat-alal)
Cattail
Typha latifolia

Mahat'alal lo-po brown part



ćoyʔa (tsoyah)
Scirpus lacustris



Me-gal (Meg-ell)
Indian Tea, Mormon Tea
ephedra viridis



Dewdilek or Mořan
Indian Paintbrush
Castilliga, red



Pećumeli? (petz-umel-eeh)

Wild Rose

Rosa woodsii



There are four different types of lupin used in the area:

Delem, damla·kim, bada·?ći, and wada·ša?



Gewe?mukuš (Geh-weh-mu-kush)

Snow plant

Sacodes sanguinea



Wemši? (wemsheeh)

Common yarrow

achillea



Nanolwa? (nan-hole-wah)
Golden Currant
ribes aureum



Mu·?aluŋi (moo-all-ung-eeh)
Wild strawberry
Fragaria Virginian



Šuwetik (shu-wet-uk)

Western Service Berry

Amelanchier



Ćamdu (tz-ahm-do)

Western chokecherry

Prunus virginiana var. demissa



Ba·du? (bah-dooh)
Blue Elderberry
Sambucus glauca



Bado·po (ba-doe-po)
Corn Lily
veratrum californicum



K'o·mho (kh-om-ho)
Cow Parsnip
Heracleum lanatum



Diteš ʔemlu (dit-esh-emloo)
Peppermint
Menthus



Šawa? mo•ba? (shaw-wa-mo-bah)

Pinemat Manzanita

Arctostaphylos nevadensis



?Eyey? (eye-eye)

Green Manzanita

Arctostaphylos patula



Tuya·gimhu (too-yah-gum-hoo)
Western Peony
Paeonia brownii



?Uli·panza (oolee-ponza)
Watercress
Barbarea orthocerus



Pu·yewli (puh-yew-leech)

Western Blue Flag

Iris missouriensis



Bo·šdi (bosh-dee)

Wild Onions

Allium canadense



Himu (him-oo)

Willow

Salix spp.



Megi-geš (meh-gee-gesh)

Bracken Fern Root

Pteridium aquilinum



Da·bal (dah-ball)
Big Sage
Artemisia tridentate



Balṅaṅcaṅ (bal-nga-tzang)
Bitterbrush
Purshia tridetata



Dime? de-guš (dimeh-day-goosh)
Water Hemlock
Cicuta occidentalis



Da·hal (dah-hall)
Sand Seed
Mentzelia albicaulis



Sewit yogil (seh-woot-yagool)
Sierra Gooseberry
Ribes roezlii



Wašiw Baŋkuš (Washiw bang-kush)
Wild Tobacco
Nicotiana attenuate



Beheziŋ taša? (behezing tash-ah)

Aspen

Populus tremuloides

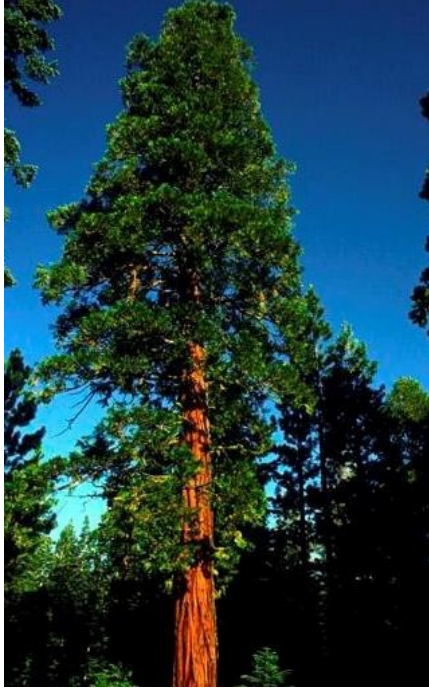


Simt'agim (sim-tdah-gum)

Nano·mba? (sugar from the tree)

Sugar Pine

Pinus lambertiana



?Itmahawa? (itmah-ha-wah)

Cedar

Libocedrus decurrens



P'a-l (pbal)

Juniper

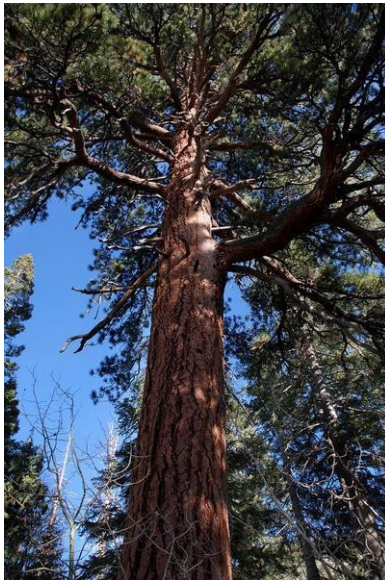
Juniperus Osteosperma



T'agim (tdah-goom)
Pinion Pine tree
Pinus monophylla



Debu·bu·yi? (deh-boo-boo-yeeh)
Ponderosa Pine
Pinus ponderosa



Ma·daš dewdi?iš (mah-dash dow-dee-esh)

Jeffrey Pine

Pinus jeffreyi



Šala?- pitch



T'agim ya·ka?- cone



Boyon (boy-ang)

Pine needle



Dašik (dah-shook)
Locust



Go·ci- (go·tsee)
Yellow Jacket



Ge·šu- (geh-shoo)
Earthworm



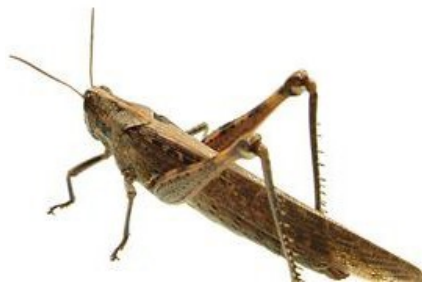
Ćiki (tsoo-koo)
Spider



Ći·bel (tsee-bell)
Louse



Gu·giši? (goo-gisheeh)
Flea



Pago·?tumhu (pah-goh-tumhoo)
Grasshopper



Palo·ʔlo (pah-lo-lo)
Butterfly



Yagil tayuŋi (yagool tye-ungee)
Carpenter Ants



ʔA·ni
(awnee)
Ant



Ćo·šiqi?
(ts-oshing-eeh)
fire ant



daši·naʔi
(dah-shina-ee)
sugar ants



K'awandada? (Kga-wan-da-dah)
Desert turtle



Gowgow
Canadian goose



Dilek
Duck



ćikikhu (tsuk-tsuk-hoo)
Pelican



Go-ta? (go-tah)
Frog



ʔImgi (im-gee)
Cut throat



K'i·ki·diʔ (kee-kee-deeh)
Silver fish



Bakwanhu
Sucker fish



Mede·ćiliʔ (meh-deh-tsileeh)
Minnow



ʔUćiliʔ (oo-tsu-leeh)
Chipmunk



Ba·sat
Red Squirrel



Pawawʔli
Grey squirrel



Pašaʔ
Bushy tailed wood rat



Pu·šalaʔ
House mouse



Ćimelhel (tsim-mel-hel)
Beaver



Pewećeli (peh-wets-illy)
Weasle



Pelew (pell-ew)
Jack Rabbit



Ćali?
Cottontail



Miki? (mooh-key)
snowshoe rabbit



Tupipiwi? (to-pipi-eweh)
Skunk



Diteš (ditish)
Prairie Dog



Bagumdalŋi
(bagoom-dal-ngeh)
Bat



Sewit (seh-woot)
Porcupine



Memdewi Demesu·yi?
Mule deer



Mayṅa?(mi-ngah)
Fawn



?O·gal
Mt. Goat



?Ayis (eye-iss)
Antelope



Mide? (moo-deh)
Black bear



Taba? (tah-bah)
Grizzly Bear



Du·mšeygal (dum-shay-gal)
Bob Cat



Hili·za? (hil-eezah)
Mt Lion



Waciha
(wats-eeha)
Fox



Gewe
(geh-we)
Coyote



tu·li·zi
(to-lee-zhee)
Wolf



Ma?ki (mah-keeh)
Rattlesnake



Mušgulhu (mooshgul-hoo)
Watersnake



Patalŋiʔ (pah-taw-ngee)
Eagle



Maʔwi (mah-wee)
Hawk



Huʔim (hoo-zhum)
Vulture



Dimim (dim-oom)
Owl



Taʔtat (tah-tat)
Magpie



ćašu (tsah-shoo)
Pinion Jay



Si·su ti·yeli?
Meadow Lark



éi·yuk (tsee-yuk)
Sage Grouse



T'etil
Valley quail



maduma?ti
Mt. quail



?a?a
Crow



Tebe? gum si·su
Sparrow

Waʔde t'i·ʔmi has been made possible through the US forest service and Wašiw Wagayay Maṅal. This publication has been revised in 2015 by Wašišu Guwaʔ which operates under the Washoe Tribe of Nevada and California.

The Lake Tahoe region is the center of the Wašiw people.

This book shows some of the plants and animals that are from our area. The Wašiw people continue to utilize their resources as well as pass on the knowledge to their children. The plants featured in this book are used for food, medicine and building materials.

**Lew di·gum bedugemset huyaʔ Dit ḡawa, Dimeʔ i·da
dewt'eʔeš diweyʔi aṅaw hulew Di ḡami·ʔmiṅ lewe**

*We will help each other to protect and preserve our land,
water and air for generations to come*

Thank you to all who have contributed to the making of this book

Washoe Tribe of Nevada and California
919 Hwy 395
Gardnerville, Nevada 89410