

# Town of Pine Haven

**Pine Haven Tank & Well Level II Study  
Wyoming Water Development Commission**

# **Project Team**

**Baker & Associates, Inc.**

**Project Manager: Tim Eisenhauer, PE**

**Rus Colby, PE & Coby Romig**

**Wyoming Groundwater, LLC**

**Hydrogeologist: Chris Moody, PG**

**Wyoming Water Development Commission**

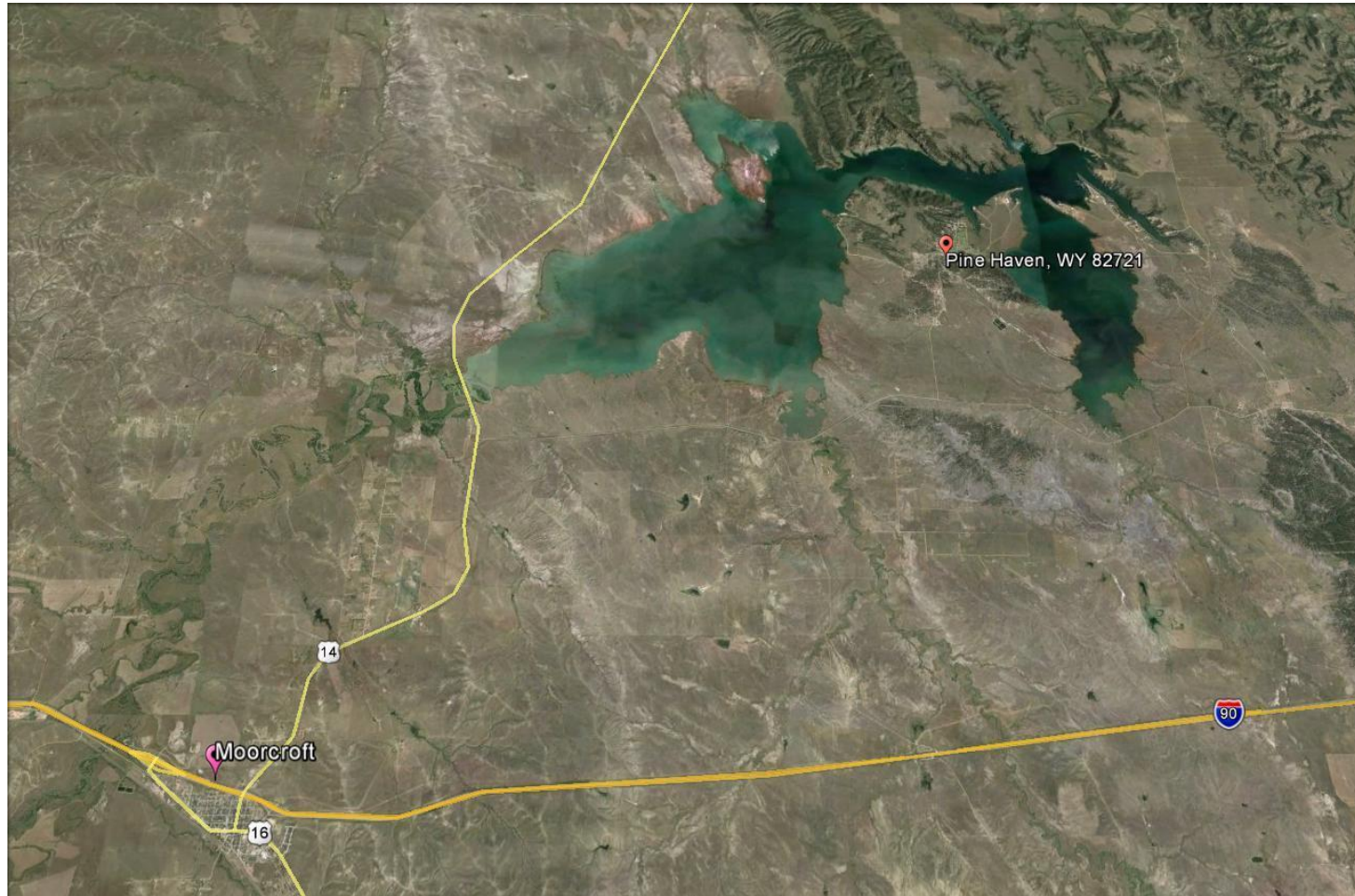
**Project Manager: Ron Vore**

**Town of Pine Haven**

**Mayor: Larry Suchor**



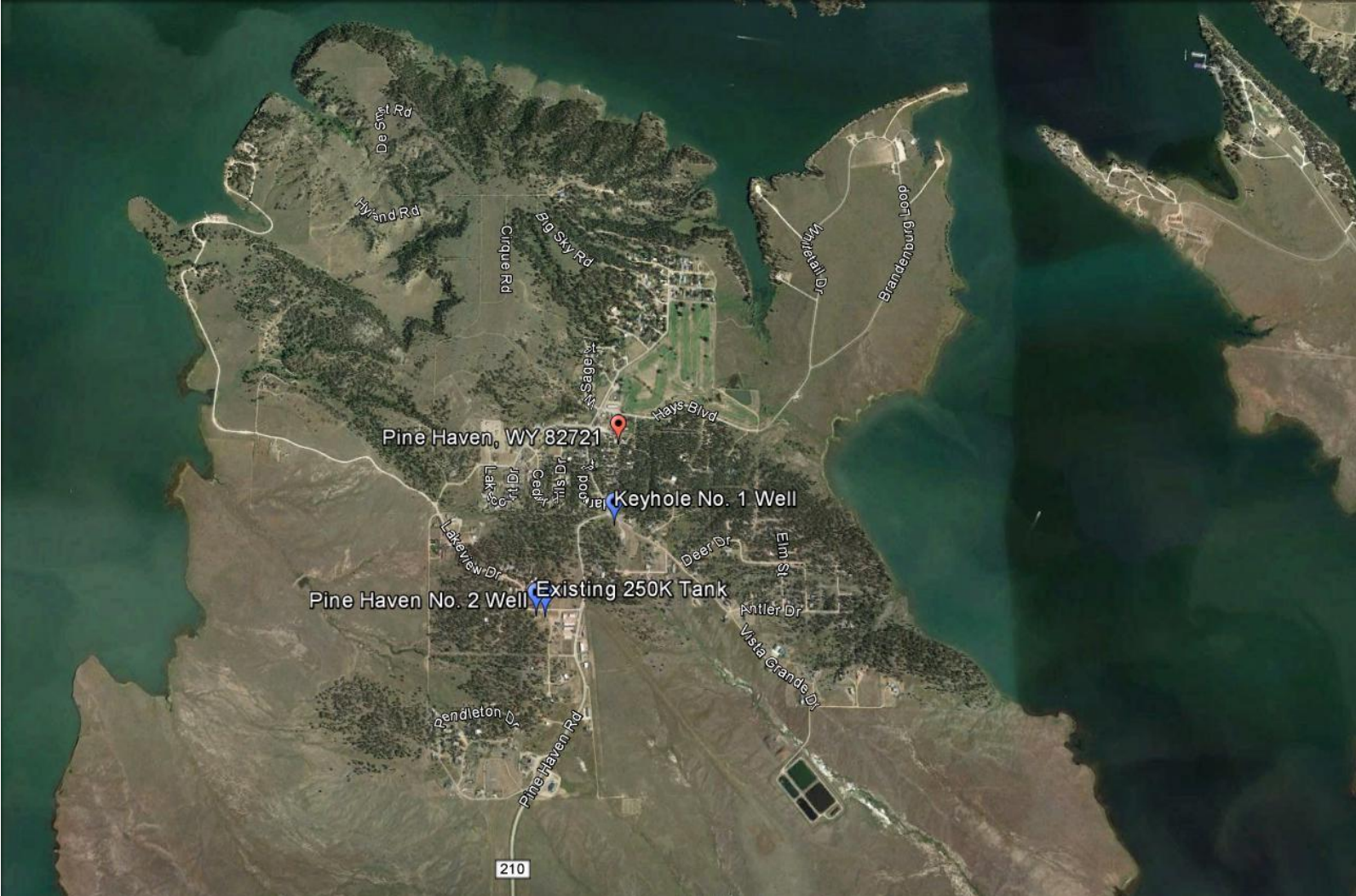
# PINE HAVEN VICINITY MAP



# Statement of Problem

- **Water System Pressures**
- **Water Storage Capacity for Fire Protection**
- **Service Area Expansion**
- **Water Supply Adequacy**
- **Distribution Bottlenecks**

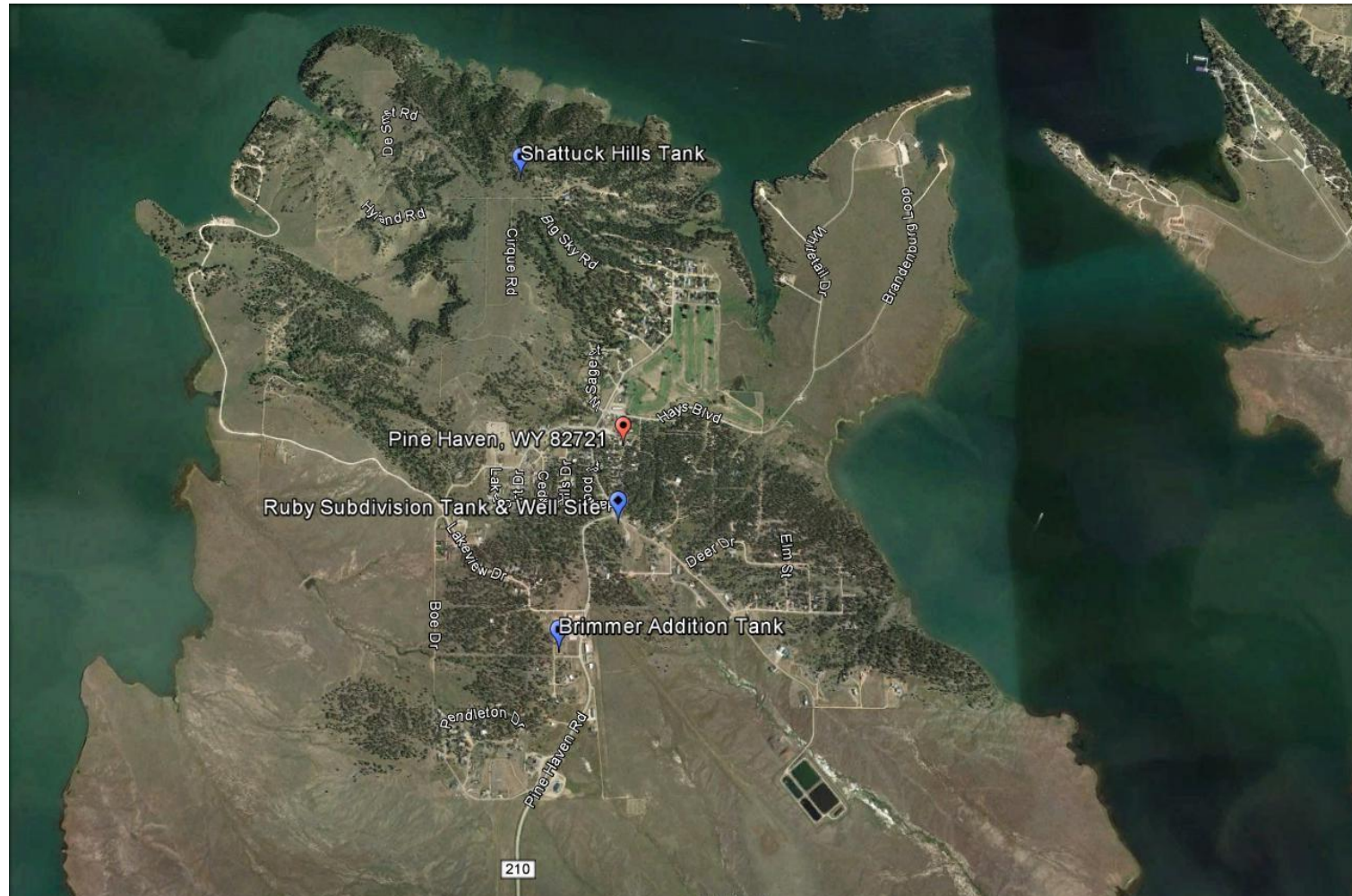
# PINE HAVEN EXISTING FACILITIES



# Key Study Elements

- Evaluate Expanded Water Service Area – Planning & Zoning
- Review Population Projections
- Evaluate Water Supply
  - Madison Well Options
  - Regional Water Supply Options
- Improvement Site Evaluations/Costs

# PINE HAVEN TANK & Well STUDY SITES



## Tank & Well Study Sites:

1. Brimmer Addition Site
2. Ruby Subdivision
3. Shattuck Hills

# REGIONAL WATER SUPPLY OPTIONS

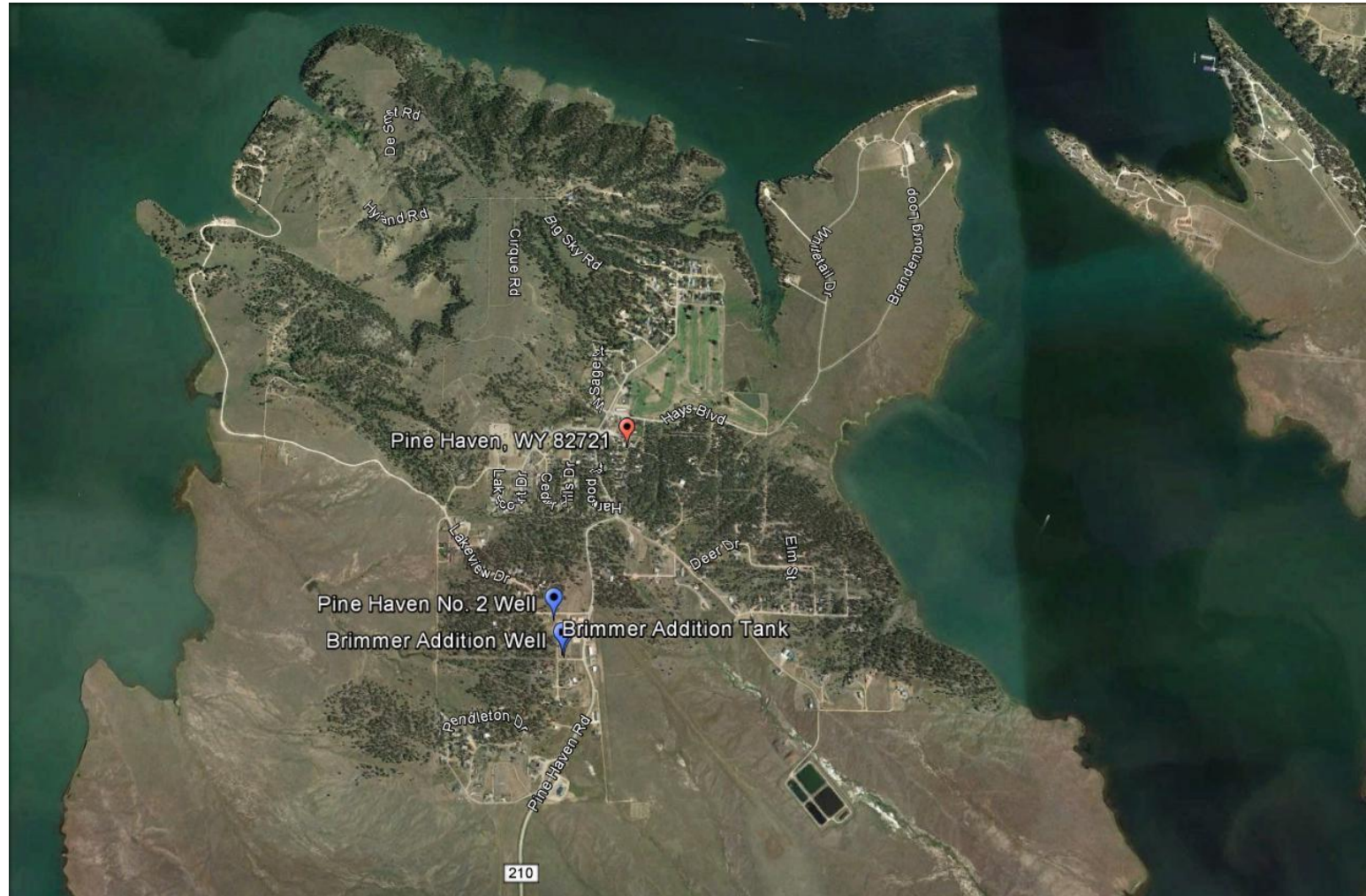


## Regional Options:

1. Gillette Madison Regional Water Supply
2. Connection to Keyhole State Park Well



# PINE HAVEN RECOMMENDED SITE



## Estimated Project Costs:

Brimmer Addition Tank & Well Improvements: \$2,937,000

