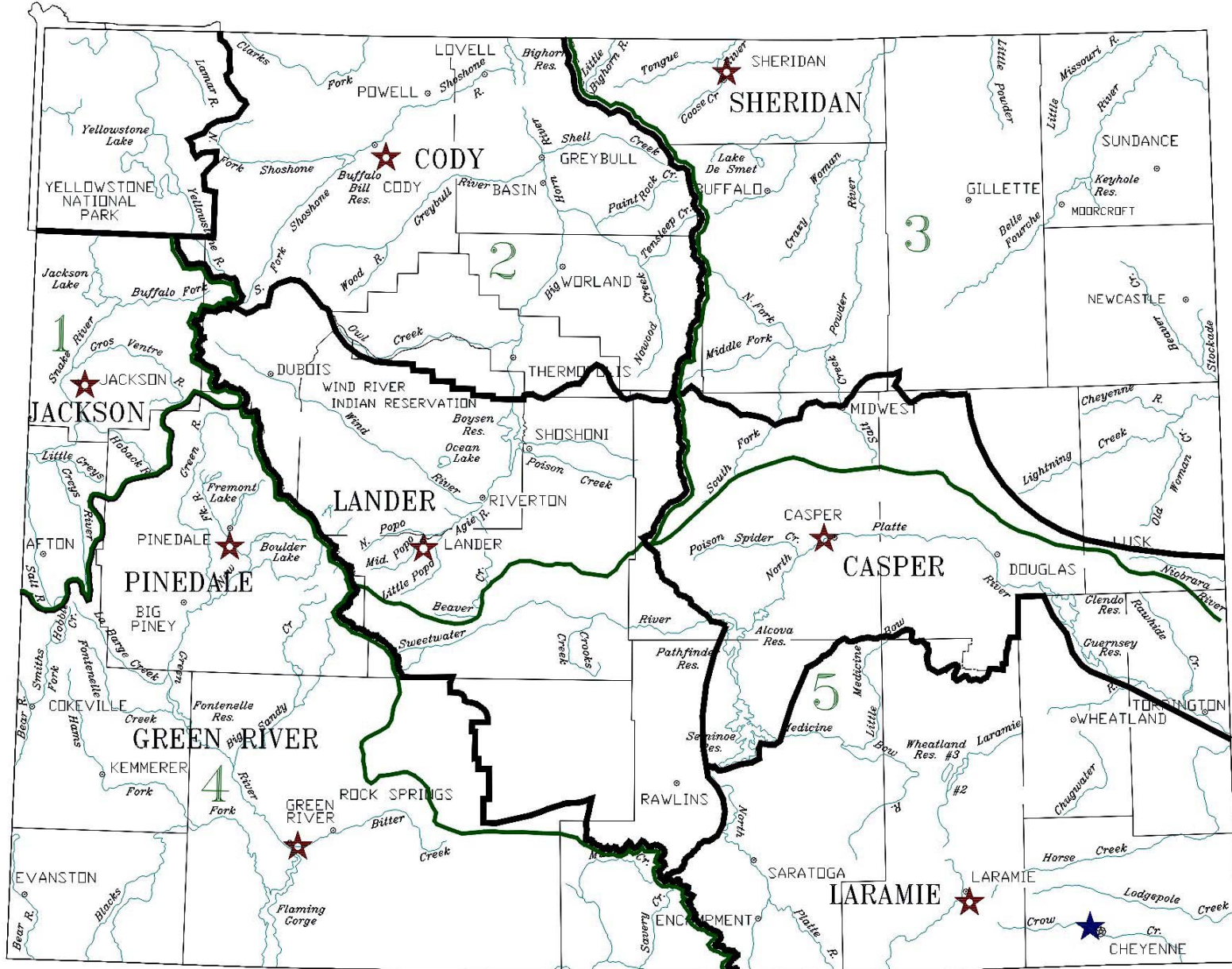


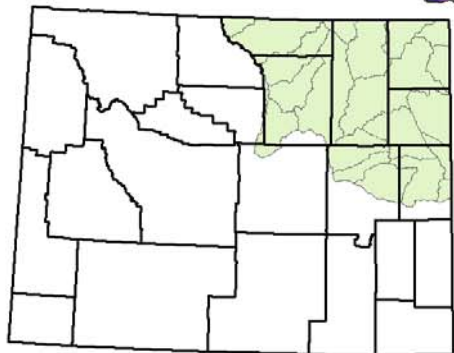
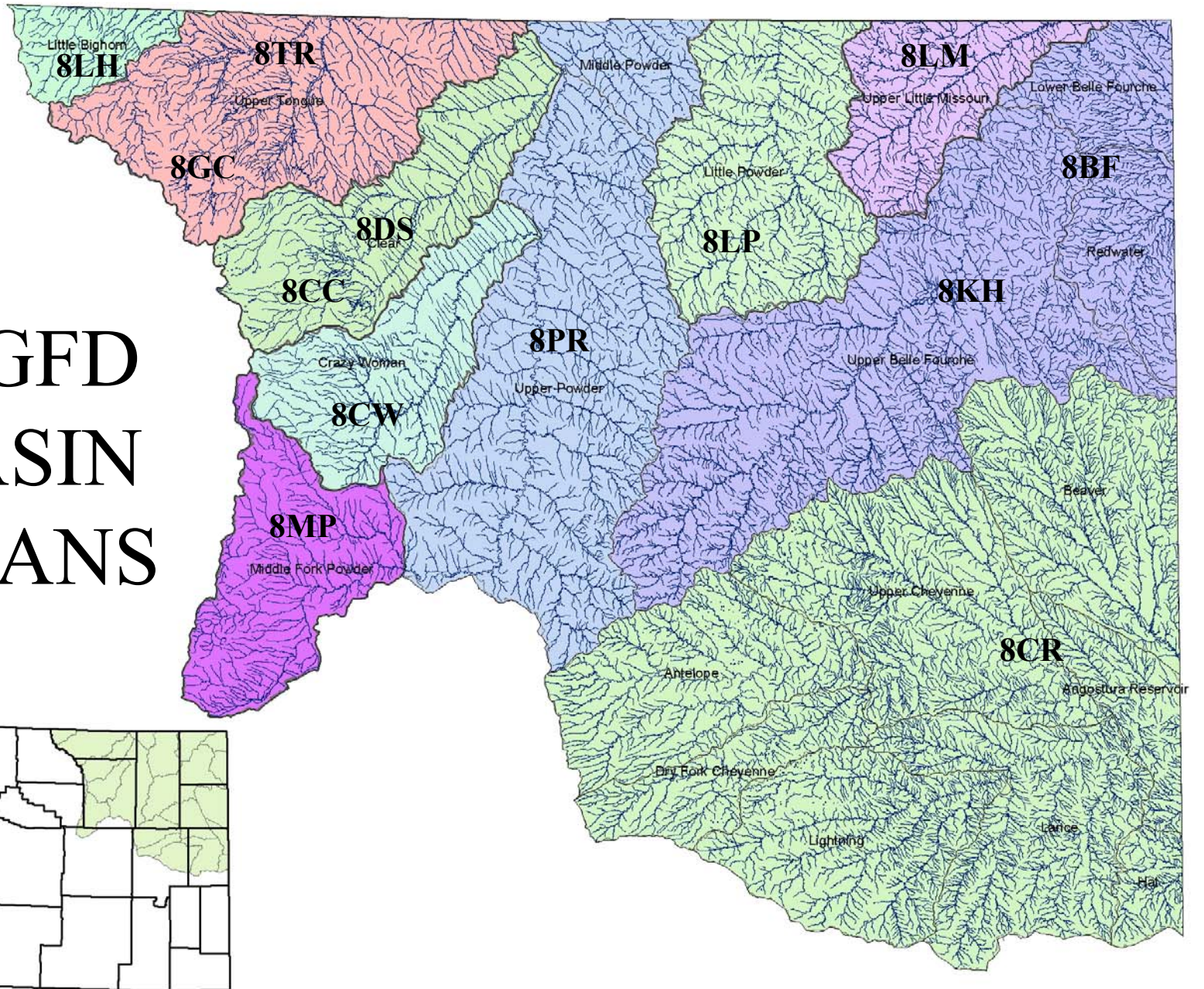
# **POWDER/TONGUE/LITTLE HORN AQUATIC WILDLIFE RESOURCES**



# FISHERIES MANAGEMENT ADMINISTRATIVE REGIONS



# WGFD BASIN PLANS



# WHAT IS FISHING WORTH TO WYOMING?

- ONE FISHING DAY IN 2000: **\$149.67**
- STATEWIDE ANGLER EXPENDITURES IN 2000: **\$698,527,102**
- ESTIMATED **268,000** ANGLER DAYS PER YEAR IN NORTHEAST WYO.
- ANGLING CONTRIBUTES ABOUT **\$41 MILLION** TO NE WYOMING'S ECONOMY EACH YEAR.

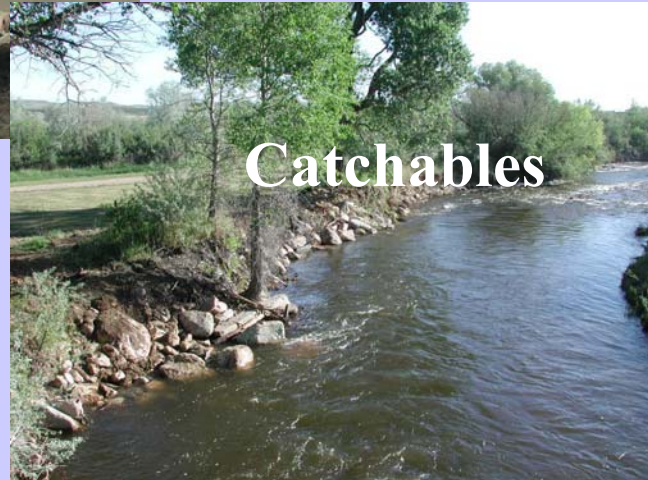
# **VALUE OF FISHING IN POWDER/TONGUE/LITTLE BIGHORN DRAINAGES**

- **ESTIMATED 215,520 ANGLER DAYS  
PER YEAR**
    - **176,806 TONGUE DRAINAGE**
    - **94,092 POWDER DRAINAGE**
    - **28,864 LAKE DESMET**
    - **7,277 LITTLE BIGHORN DRAINAGE**
    - **2,573 LITTLE POWDER DRAINAGE**
- (VALUE = \$32,256,878)**

# WHAT VALUE ARE NON-GAME AQUATIC SPECIES?



# Fish Management Concepts



# FISH STOCKING


A yellow helicopter is shown in flight over a lake, dropping a net into the water. The helicopter is positioned on the left side of the frame, with its main rotor blades blurred from motion. A large net is being released from the bottom of the helicopter, creating a splash in the water. The background is a dense forest of tall, thin trees, likely evergreens, under a bright sky. The overall scene is set in a natural, wooded environment.

**Scheduled for 2002:**

**332,000 Trout (35,000 pounds)**

**175,000 Walleye (1,418 pounds)**





**16,000 trout (1,272 pounds) scheduled for streams**  
**Most streams are managed as *Wild*, and are not stocked with fish**

**97% (492,000 fish and 35,000 pounds) of the fish scheduled for stocking in 2002 will be planted in *Standing Waters* in the Sheridan Region**



# 3,000 Miles and 235 Streams Managed in the Sheridan Region



An aerial photograph of a mountain valley. The terrain is covered in dense green forest. A stream flows through the valley, visible as a light-colored path. The text is overlaid on a semi-transparent grey box in the upper center of the image.

**2,010 Stream Miles (87%) in  
the Powder/Tongue/Little Horn**

# 19,000 Acres and 480 Standing Waters in the Sheridan Region



A scenic landscape photograph featuring a large, calm blue lake in the center. In the background, there are rolling mountains under a clear blue sky. The foreground on the left is dominated by the dark, silhouetted branches of a tree, with some yellowish-brown foliage visible at the bottom. The overall scene is peaceful and natural.

**10,236 Acres (54%) in the  
Powder/Tongue/Little Horn**

# Native *Non-Game* Fish

## Little Bighorn/Tongue/Powder



BRASSY MINNOW



PLAINS MINNOW



CREEK CHUB



FATHEAD MINNOW



SAND SHINER



FLATHEAD CHUB



GOLDEYE



LAKE CHUB

# (More) Native *Non-Game* Fish Little Bighorn/Tongue/Powder

15 Native Non-Game Species



LONGNOSE SUCKER



MOUNTAIN SUCKER



REDHORSE SUCKER



WHITE SUCKER



LONGNOSE DACE



STURGEON CHUB



RIVER CARPSUCKER

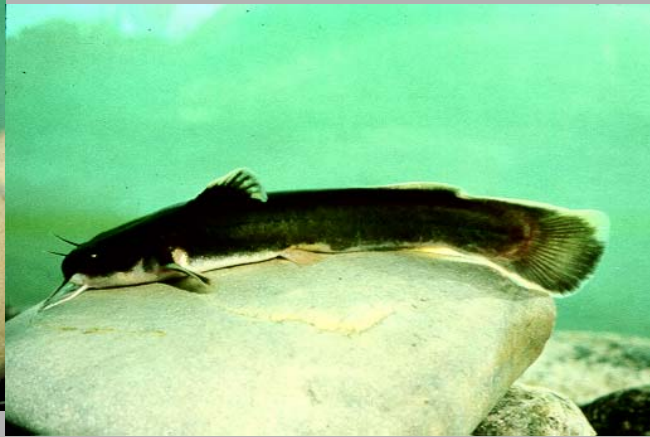


# Native *Game* Fish

## Little Bighorn/Tongue/Powder



BLACK BULLHEAD



STONECAT



CHANNEL CATFISH



MOUNTAIN WHITEFISH



YELLOWSTONE CUTTHROAT



SNAKE RIVER CUTTHROAT

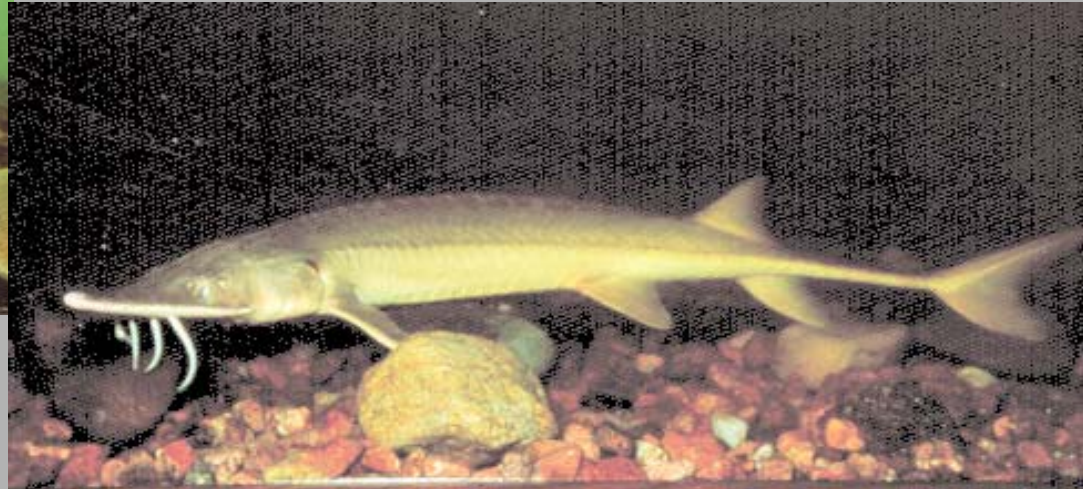
# (More) Native *Game* Fish

## Little Bighorn/Tongue/Powder

7 Native Game Species



SAUGER



SHOVELNOSE STURGEON

# NUSIANCE INTRODUCTIONS



**COMMON CARP**



**GREEN SUNFISH**



**GOLDFISH**

# POPULAR INTRODUCTIONS



**CRAPPIE**



**BASS**



**PERCH**



**WALLEYE**



**LAKE TROUT**



**BROOK TROUT**



**RAINBOW TROUT**



**BROWN TROUT**

24 Introduced Species: 7 non-game; 17 game species

# RECORD HOLDERS FOR NE WYO



**LARGEMOUTH BASS: 21.5" 7.88#**

**SMALLMOUTH BASS: 19.0" 5.08#**

**SHOVELNOSE STURGEON: 36" 7.6#**

**NORTHERN PIKE: 43" 26.4 #**

**GOLDEYE: 16.75" 1.32#**

**GREEN SUNFISH: 8.3.0" 0.54#**

**ROCK BASS: 11.0" 1.29#**

**LONGNOSE SUCKER: 18.1" 2.19#**

# Focused Management Efforts





CHANNEL  
CATFISH

STURGEON  
CHUB



# *POWDER RIVER NATIVE FISHES AND THEIR HABITATS*



# *MAJOR WATER FISHERIES*

A person in a green jacket is fishing on a lake. The background shows a wide expanse of water and distant hills under a cloudy sky. The text is overlaid on the left side of the image.

- LAKE DESMET
- KEYHOLE RESERVOIR
- MIDDLE FORK POWDER RIVER
- HEALY RESERVOIR
- SAND CREEK
- MUDDY GUARD RESERVOIRS
- TIE HACK RESERVOIR
- NORTH TONGUE RIVER
- LAK AND MW RESERVOIRS



# NATIVE YELLOWSTONE CUTTHROAT



# HABITAT ENHANCEMENT



# ACCESS DEVELOPMENT





# AMPHIBIANS

# AQUATIC HABITAT CHALLENGES

**FISH NEED WATER TOO**



## **W.S. 41-3-1001 (b)**

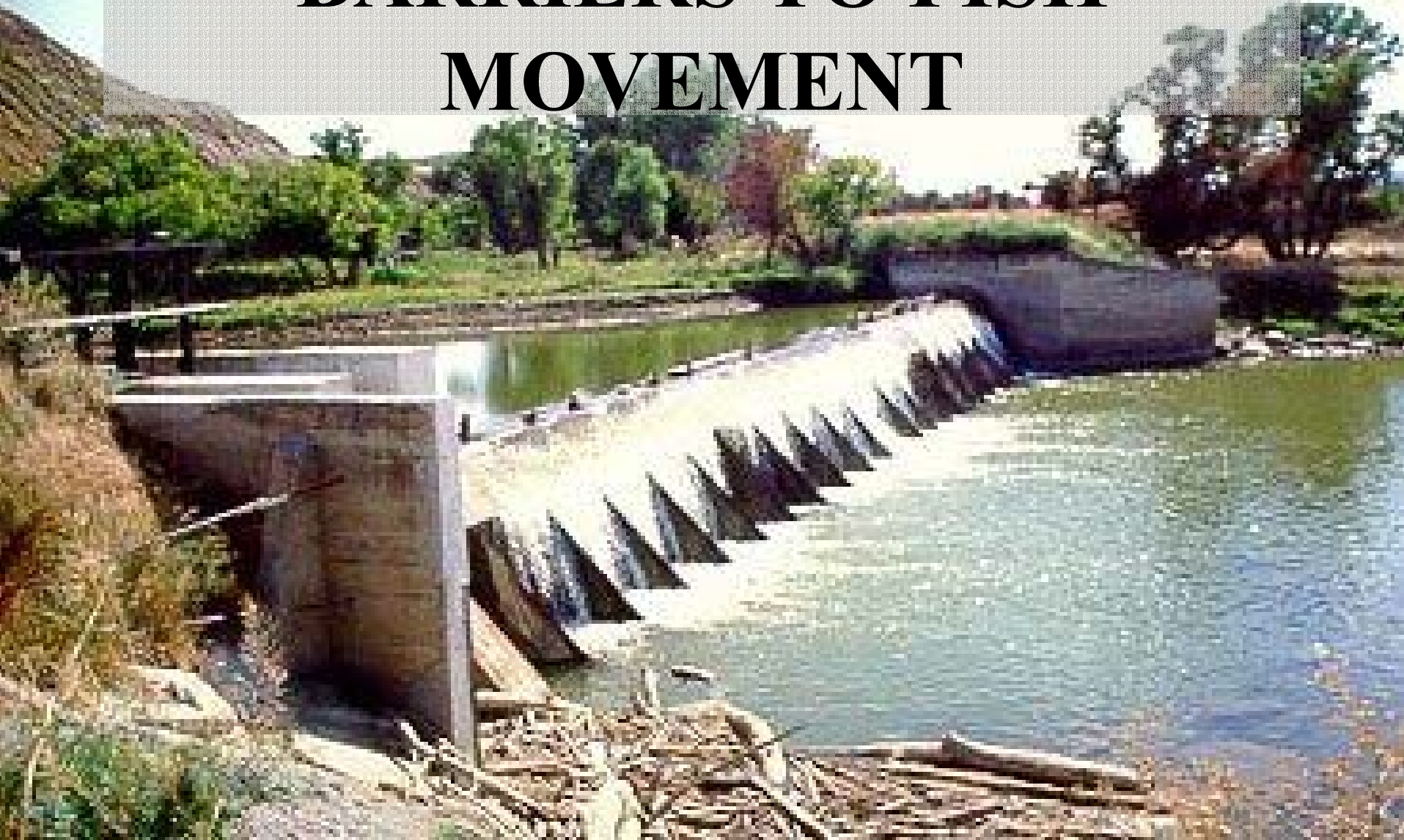
**Water flowing in any stream may be appropriated for instream flows **to maintain or improve existing fisheries** and declared a beneficial use of water**

*Middle Fork Powder River ; Tongue River  
Little Bighorn River; Dry Fork Little Bighorn  
Sand Creek; Clear Creek 1 and 2*

# Conservation Pools Are Important to Aquatic Life



# BARRIERS TO FISH MOVEMENT





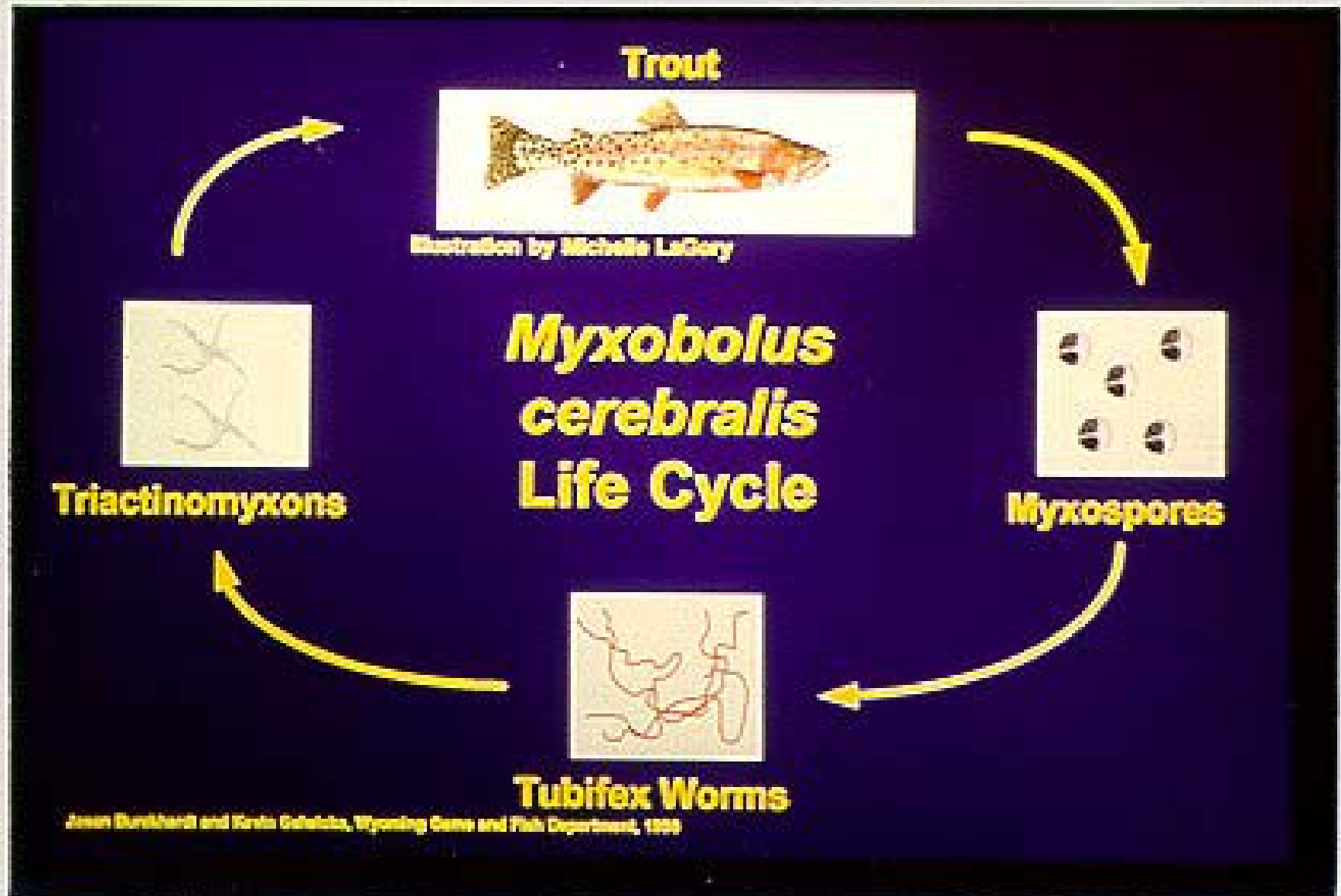
# LOSS OF FISH TO DITCHES





**EROSION,  
SEDIMENTATION,  
AND LOSS OF FISH  
HABITAT**

# DISEASE AND AQUATIC NUSIANCE SPECIES



# ILLEGAL INTRODUCTIONS



WALLEYE IN LAKE DESMET



**THIS IS WHAT IT IS REALLY ALL ABOUT -  
MAINTAINING AND ENHANCING  
WHAT WE HAVE IN WYOMING**

15 8 12



ENJOYING WYOMING'S OUTDOORS  
IS A  
*QUALITY OF LIFE EXPERIENCE*