



CANADA

DEPARTMENT OF ENERGY, MINES AND RESOURCES
MARINE SCIENCES BRANCH

MINISTÈRE DE L'ÉNERGIE DE MINES ET DES RESSOURCES
DIRECTION DES SCIENCES DE LA MER

DFO - Library / MPO - Bibliothèque



10028216

ATLANTIC OCEANOGRAPHIC LABORATORY

BEDFORD INSTITUTE

LABORATOIRE OcéANOGRAPHIQUE DE L'ATLANTIQUE

INSTITUT de BEDFORD

Dartmouth, Nova Scotia
Canada

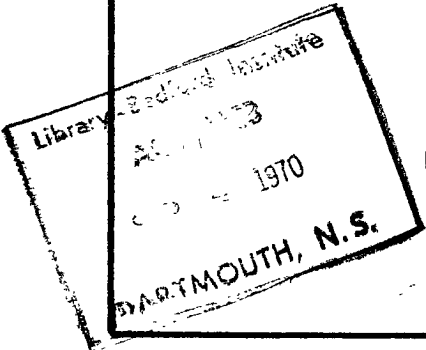
RECENT FORAMINIFERA OF THE CONTINENTAL SHELF OFF EASTERN CANADA: A PRELIMINARY REPORT

by

KENNETH HOOPER

REPORT A.O.L. 70-3

JUNE 1970



PROGRAMMED BY

THE CANADIAN COMMITTEE OF OCEANOGRAPHY

58123

ATLANTIC OCEANOGRAPHIC LABORATORY
BEDFORD INSTITUTE, DARTMOUTH, N. S. - CANADA

This is a technical report to our Headquarters which has received only limited circulation. On citing this report in a bibliography, the title should be followed by the words "UNPUBLISHED MANUSCRIPT", in accordance with accepted bibliographic custom.

RECENT FORAMINIFERA OF THE CONTINENTAL SHELF OFF
EASTERN CANADA: A PRELIMINARY REPORT

by

Kenneth Hooper

REPORT A.O.L. 70-3

JUNE 1970

ABSTRACT

Foraminifera of 40 bottom sediment samples collected from depths ranging from 5 to 457 metres between English Point, Quebec, and Flemish Cap, 360 miles east of Newfoundland were mechanically and faunally analysed. 318 species and varieties of Foraminifera were recognized.

Raw data of foraminiferal counts were processed by computer to produce data matrices, the elements of which express species as a percentage of the total foraminiferal fauna per sample (station). These data were used as input for a factor-vector analysis, the results of which indicated that seven benthonic foraminiferal assemblages exist in the region of the continental shelf off eastern Canada.

Inspection of depth data suggests that division into seven depth-assemblages agrees well with oceanographic data on water-mass characteristics.

Faunal lists are given of (1) species characteristic of each assemblage, (2) assemblage-ubiquitous species and, (3) assemblage-indicator species.

NOTE: Appendices D, E, F and G which include the data matrices are not part of this report but may be obtained from the author.

RECENT FORAMINIFERA OF THE CONTINENTAL SHELF OFF
EASTERN CANADA: A PRELIMINARY REPORT

INTRODUCTION

Previous work:

Published work (to 1965) on recent foraminifera off eastern Canada is sparse, and lacks comprehensiveness. Dawson (1860, 1870), Cushman (1918-31) and Whiteaves (1869, 1875) were the main contributors. Unpublished work, mostly in report form in the case of governmental institutions, and in the form of dissertations in the case of universities, deals mainly with littoral, sub-littoral and inner shelf environments (Bartlett, 1962, 1963, 1964, 1965; Athearn, 1954; Sproule, 1962).

Present study:

The present study is an attempt to elucidate the broad picture of foraminiferal distribution over the continental shelf from a comparatively small number (40) of bottom sediment samples relative to the area covered (some 300,000 sq. miles). No claim is made for the randomness of the samples in a statistical sense. Indeed, they have been chosen from a larger number to represent as wide a range of depths and geographical positions as possible, in the expectation that the major marine environments of the region would thus be represented.

The bottom sediment samples were collected in May and June of the years 1959 and 1965 from stations between English Point, Quebec, in the west, Flemish Cap in the east, and the southern limit of the Grand Banks - the so-called Tail - in the south (Figure 1). They were collected from depths between 5 and 457 metres using a short tube (Phleger) corer and a Dietz-LaFond grab, the choice depending upon the physical characteristics of the sediment; mud and clay commonly were collected by means of the short tube corer, silt and sand by means of the Dietz-LaFond grab.

The following abbreviations are used:

S43 followed by station number refers to cruise number 43 of C.N.A.V. *SACKVILLE* in May, 1969.

S44 followed by station number refers to cruise number 44 of C.N.A.V. *SACKVILLE* in June, 1959.

An M followed by station number refers to a cruise of the longliner *MARC ST.* out of Fox River, P.Q., in June 1965. The letters S.I. followed by station number refers to the Sept Iles Bay samples collected on the same cruise. Table 1 is a table of cruise data compiled mostly from ship's log during the cruises.

All specimens of foraminifera obtained from the bottom samples are assumed to be modern forms, although not all samples were stained to show protoplasm. Samples of S43 and S44 were not injected with staining medium, but those of the M and S.I. series were. However, in this preliminary study, all have been processed by the computer program as if they had not been injected with staining solution. This is denoted on computer printout as *TOTL MATRIX* (for a matrix based on total populations).

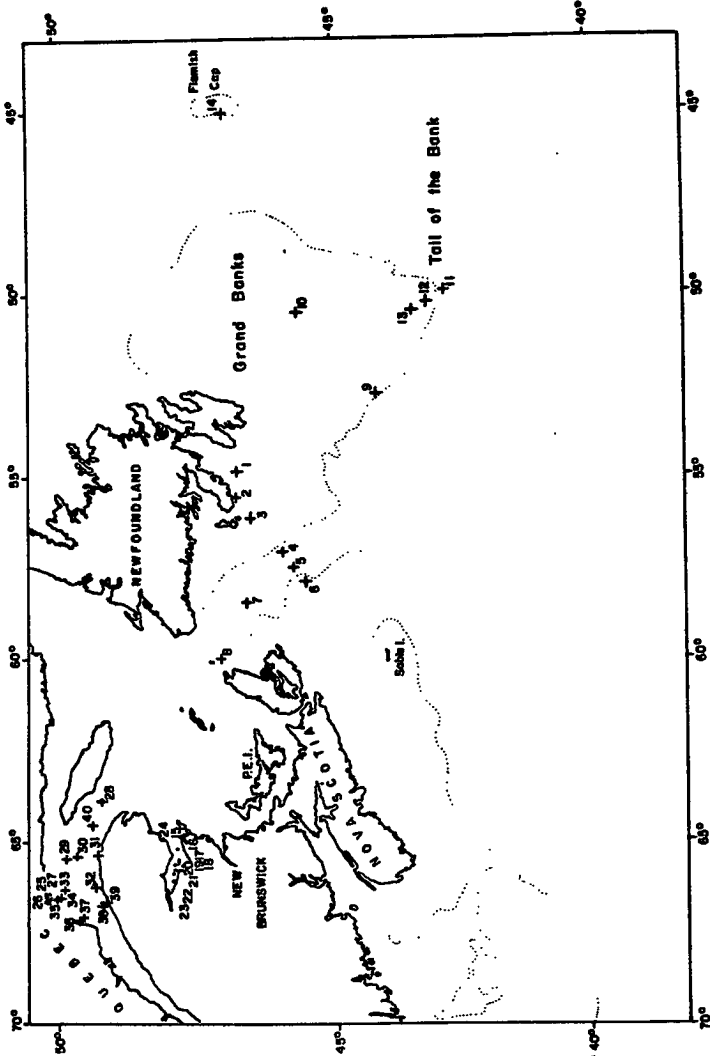


Figure 1 - Locality chart showing sampling stations represented by numerals. The dotted line indicates the outer limit of the continental shelf at 187 metres depth.

CRUISE DATA

Table 1

| Sample No. (This Report) | Station No. (Shipboard) | | Position | | Depth in Metres | Dietz-Lafond Grab | Phleger Corer | Sediment Type M-mud St-silt S-sand | Temperature °C. |
|-----------------------------|----------------------------|-------|-----------|-----------|-----------------|-------------------|---------------|---------------------------------------|-----------------|
| | | | Lat. | Long. | | | | | |
| 1 | Sackville 43 | 17 | 46° 48' | 54° 53' | 237 | X | | M | -0.97 |
| 2 | | 18 | 46° 49' | 55° 36' | 74 | X | | S-M | -1.03 |
| 3 | | 19 | 46° 31' | 56° 10' | 135 | X | | S | -1.04 |
| 4 | | 21 | 45° 58' | 57° 08' | 218 | | X | M | 2.77 |
| 5 | | 22 | 45° 46' | 57° 30' | 457 | | X X | M | 4.80 |
| 6 | | 23 | 45° 32' | 57° 55' | 255 | | X X | M | 5.09 |
| 7 | | 27 | 46° 37' | 58° 30' | 430 | | X X | Clay | 4.74 |
| 8 | | 35 | 47° 06' | 59° 59.5' | 292 | | X | S-M | 4.79 |
| 9 | | 47 | 44° 11.5' | 52° 45' | 135 | X | | S | — |
| 10 | | 52 | 45° 39' | 50° 30' | 74 | X | | S | — |
| 11 | | 63 | 42° 51' | 49° 57' | 164 | X | | S | 2.48 |
| 12 | | 64 | 43° 11' | 50° 12' | 65 | X | | S | 1.70 |
| 13 | | 65 | 43° 29' | 50° 27' | 58 | X | | S | 1.29 |
| 14 | | 82 | 47° 00' | 45° 00' | 164 | X | | M | 3.02 |
| 15 | Sackville 44 | 16B | 47° 49.5' | 64° 56' | 5 | X | | S | 12.74 |
| 16 | | 21B | 47° 54' | 65° 18' | 64 | X | | — | — |
| 17 | | 27 | 47° 52' | 65° 30' | 62 | | X | — | -0.20 |
| 18 | | 28C | 47° 48' | 65° 40.2' | 50 | | X X | St. M | 11.40 |
| 19 | | 29 | 47° 54' | 65° 36' | 26 | | X X | — | 4.20 |
| 20 | | 30 | 47° 55.8' | 65° 37.5' | 38 | | X X | M-S | 5.20 |
| 21 | | 32A | 47° 56.5' | 65° 46' | 34 | | X X | M | — |
| 22 | | 34 | 47° 58' | 65° 54' | 32 | | X X | — | 3.60 |
| 23 | | 35 | 47° 58' | 66° 04' | 12 | | X X | M | 1.20 |
| 24 | | 57A | 48° 07' | 64° 57' | 82 | | X | St. M | -0.45 |
| 25 | Marc | SI.2 | 50° 12.5' | 66° 22' | 7 | X | | M | — |
| 26 | | SI.6 | 50° 12' | 66° 29' | 12 | X | | M | — |
| 27 | | SI.9 | 50° 10' | 66° 27.5' | 36 | X | | M | — |
| 28 | | M.13 | 49° 15' | 63° 52' | 365 | X | | M | 4.31 |
| 29 | | M.35 | 49° 51.5' | 65° 26' | 82 | X | | Clay | — |
| 30 | | M.37 | 49° 41.5' | 65° 25' | 274 | X | | M | — |
| 31 | | M.43 | 49° 16' | 65° 19' | 56 | X | | S | 2.87 |
| 32 | | M.47 | 49° 22' | 66° 12' | 317 | X | | — | 4.64 |
| 33 | | M.53 | 49° 54' | 66° 19.5' | 250 | X | | M | 4.71 |
| 34 | | M.54B | 49° 57' | 66° 21' | 222 | X | | — | 3.47 |
| 35 | | M.55A | 50° 05.5' | 66° 22' | 142 | X | | M | 1.77 |
| 36 | | M.57C | 49° 37' | 67° 11' | 237 | X | | M | 0.23? |
| 37 | | M.58 | 49° 35' | 67° 07' | 106 | X | | S-M | 0.23 |
| 38 | | M-63 | 49° 12' | 66° 49' | 274 | X | | M | 4.68 |
| 39 | | M.64B | 49° 09' | 66° 42' | 191 | X | | M | 3.40 |
| 40 | | M.F | 49° 24' | 64° 31' | 398 | X | | M | 4.72 |

N.B. MARC series temperatures compiled from data supplied by Canadian Oceanographic Data Centre (Department of Energy, Mines and Resources).

PREPARATION OF SAMPLES FOR ANALYSIS

Laboratory procedures:

(a) General

The amount of sediment collected by the Dietz-LaFond-type grab varied considerably from station to station. The samples collected on cruises S43 and S44, in 1959, were either split into putative aliquot portions or not, according to the amount of material available. The top 6 cm only of the sediments collected by the short tube (Phleger-type) corer were used. On the cruise of the longliner *MARC ST.* the Phleger-type corer was irreparably damaged at the first station. As a consequence of this damage, all samples were taken by Dietz-LaFond grab. Great care was taken to ensure that the sample reached the laboratory without being inverted or contorted.

Supposed representative portions were taken of each sample by pressing a 3-inch length of a cylindrical plastic core liner $1\frac{1}{4}$ inches in diameter into the sediment sample from above, and recovering the top 6 cm of material. This sediment, with its overlying sea-water, had been preserved in alcohol and was subsequently stained with rose bengal. Normally, only one insertion of the cylindrical plastic liner was needed to extract sufficient sediment for particle-size analysis and faunal analysis.

(b) Grading of samples

Sediment samples of the S43 and S44 series were divided into six grades by washing through a nest of sieves, the size of mesh openings of which are as follows:

Grade 1, > 1190 μ ; Grade 2, > 590 μ < 1190 μ ; Grade 3, > 297 μ < 590 μ ; Grade 4, > 149 μ < 297 μ ; Grade 5, > 62 μ < 149 μ ; and Grade 6, < 62 μ .

In order not to damage the foraminifers 'Ro-tapping' was avoided. Instead, grains were assisted to pass through the sieves by a gentle water-jet. This procedure may introduce error into the mechanical analysis, but this error is not thought to be high. In any case, because the primary purpose of grading was to assist faunal analysis, it was decided to accept this risk of error in the mechanical analysis.

Dispersing agents were not used because it was suspected that they disintegrate some agglutinating foraminifers. However, in the pipette analysis of grade 6 (fine) material in the sedimentation column, calcium oxalate was used as a dispersing agent. The fauna of grade 6 was not analysed.

Apart from the procedures outlined above the method is essentially that of Twenhofel and Tyler (1941, pp. 46-55) for the mechanical analysis of sediments. Particle-size analysis was conducted for each sample. The weights of each grade obtained from sieve analysis were combined with those obtained from the sedimentation column (pipette method). The weight percentage of the range was calculated for each class interval (grade). Cumulative weight percentages were also calculated. Details of the processing of these data are given in the section on particle-size analysis.

After the sediments were dried, each grade (except grade 6) was treated in the manner described in the next section for the separation of foraminifers from sediment. Grade 6 (fine material of particle size less than 62 μ) was not

analysed faunally because foraminifers and other organisms contained in it are too small for reliable specific identification using a stereomicroscope with a maximum magnification of approximately $\times 100$, and because early growth stages of many foraminifers are so similar as to be specifically indistinguishable. The drying of material before faunal analysis has the disadvantage that some agglutinating foraminifers may disintegrate.

The sediments collected in 1965 on the cruise of the *MARC ST.* were kept in the wet state throughout. After passing through grading sieves the material was stored in plastic vials. Any lost liquid was replaced, so that the foraminifers at no time were allowed to dry out.

These samples were not separated and concentrated by the bromoform method. Instead, the foraminifers were identified and counted under water. Such counting is very tedious where the ratio of foraminifers to mineral grains is low.

(c) Separation of foraminifers from sediment

The procedure described below was only carried out on samples of the S43 and S44 cruises. Foraminifers were separated from mineral grains by the use of the heavy liquid bromoform. The sediments were passed through a succession of heavy-liquid mixtures of decreasing density. Foraminifers and grains were separated according to whether their density was greater or less than that of the mixture. Bromoform (S.G. = 2.88) was diluted by the addition of alcohol to obtain solutions of various specific gravities. Solution 1 was adjusted to a specific gravity intermediate between calcite (S.G. = 2.72) and quartz (S.G. = 2.66), solution 2 was adjusted to a specific gravity slightly below that of quartz and solution 3 was adjusted to a specific gravity of approximately 1.5 by the addition of alcohol.

The grains that sank in solution 1 commonly consisted of calcite and some heavier minerals, plus some calcareous organic remains (i.e. pieces of shell) and some calcareous foraminifera. The floating portion was collected in a separate beaker, filtered and placed in solution 2. This float usually contained light minerals, quartz grains, chitinous organisms, some arenaceous foraminifers and many foraminifers containing trapped air. The particles in solution 2 were treated in a manner similar to those in solution 1. The heavy portion (S.G. about 2.66) sank and commonly contained quartz grains and some arenaceous foraminifers. The float from solution 2 contained the lighter grains, chitinous organisms and foraminifers containing trapped air. The float was then placed in solution 3 (S.G. approximately 1.5) and allowed to settle. Grains and some foraminifers sank in this solution. Most of the foraminifers containing trapped air floated, as did the chitinous organisms and the fragments of plant material. The main bulk of the fauna was found in this portion. The portions are called fractions.

(d) Identification and counting of foraminifers

In order to obtain a statistically valid sample, identification and counting of foraminifers in each sample fraction or split was continued until more than 300 specimens of the most abundant species had been counted. However, once a split portion had been selected it was counted in its entirety. If the count was less than 300 another portion was taken, and so on, until a total count of about 300 was reached. The weight of the sediment so analysed was noted. With samples of low foraminiferal number it was not always possible

to realize this ideal, and counting had to be stopped at a lower number.

The samples of the S43 and S44 series were divided into grades and, these in turn, were divided into fractions. When the number of foraminifers concentrated in the fraction was very high, the fraction was split into smaller portions by means of a simple splitting device capable of dividing the fraction into two approximately equal portions. The device consisted of a hopper into which the fraction was placed. The foraminifers were passed over four knife edges and sent down four alternating chutes into two boxes. The contents of one of the boxes were weighed (split weight) and the contained foraminifers were identified and counted. The *MARC ST.* samples, which were divided into grades, were treated differently as described below. For microscope work it was necessary to remove the alcohol - rose bengal solution, the colour of which gave a pink hue to all tests and the vapour of which can irritate the mucous membranes. This was done by filtration and dilution with distilled water.

Where the amount of material of a grade-size was small, all the contained foraminifers were identified and counted. In cases where a large quantity of material was present in the vial containing a grade, the contents were shaken and then allowed to settle. When all the material had settled a length of capillary tubing (bore diam. = 5 mm) was inserted vertically into the sediment. With a finger tightly capping it, the tube was withdrawn and the contents were allowed to drain into a tray. It was sometimes necessary to repeat the process in order to obtain a statistically valid sample of foraminifers.

Evaluation of the staining technique presented problems. A specimen stained pink with rose bengal was recorded as living when collected only if its own protoplasm, as indicated by the shape and homogeneity of the stained mass, had taken the stain. Uneven, granular type staining was interpreted as due to foreign protoplasm, probably of algal or bacterial origin, that entered the test after death. Live protoplasm commonly contracts to a spherical globule within the test after contact with the fixing alcohol. However, it was not always easy to be sure of the nature of the stained protoplasm. In most instances the stained protoplasm could be seen within the test, but in other cases the test wall was not translucent enough and had to be broken. Thus, many tests were destroyed and counting was time-consuming.

After identification and counting of the foraminifers, the material comprising the fraction was weighed (fraction weight). The grade weight was also determined.

PARTICLE-SIZE ANALYSIS

Method of Moments:

A FORTRAN program was written for the method of moments, and textural parameters of sediment samples 1 to 40 were computed using an IBM 1620 computer.

Moment measures are obtained by summing the individual moments for each class interval. The measure obtained in this way is called a 'data moment' about the origin and is defined as,

$$n_k = \frac{1}{N} \sum_{i=1}^k X_i^k f_i \dots\dots\dots 1$$

where X_i is the class mid-point of the i^{th} class, f_i is the class frequency, and h is the number of classes.

Data moments yield less exact results than theoretical moments, but may approach them if the number of classes, h , is high.

The first moment about the origin of the distribution, n , is the arithmetic mean, M . The next three moments are computed about the mean, (Inman, 1951). They are given by

$$m_k = \frac{1}{N} \sum_{i=1}^h (X_i - M)^k f_i \dots\dots\dots 2$$

Also, standard deviation is

$$\sigma = \sqrt{m_2} \dots\dots\dots 3$$

Skewness is

$$\beta_3 = m_3 / \sigma^3 \dots\dots\dots 4$$

and kurtosis is

$$\beta_2 = m_4 / \sigma^4 \dots\dots\dots 5$$

The FORTRAN program may be obtained from the author.

The results, expressed in phi units, are shown in Table 2. They are approximate, no correction having been made for class interval.

The values of mean grain diameter (in phi units) are also shown in column eleven of the re-ordered oblique projection matrix (Table 4, p. 20).

Relation of mean size of grains to depth:

Figure 2 shows mean diameters (in phi units) against depth in metres. The scatter of points indicates only a weak correlation of particle size with depth. However, a general trend of decreasing particle size with increasing depth of water is seen.

DATA MATRICES

During the course of identification and counting, forms were seen which were thought to be varieties of certain species. It was deemed desirable to distinguish these forms from those that were more characteristic of the species as described in the literature in order to facilitate later evaluation of their ecological significance, if any. They were therefore given a number and then treated as separate entities (species) by the computer. The factor-vector analysis program does not recognize taxonomic or phylogenetic relationships.

The great amounts of data on grade weights, fraction weights, split weights and the foraminiferal counts amassed during the first stages of the study were processed by Control Data G-20 computer using a program described by

Table 2

Particle Size Analysis of Sediments - Phi Units

| <u>Station Number</u> | <u>Mean</u> | <u>Standard Deviation</u> | <u>Skewness</u> | <u>Kurtosis</u> |
|---------------------------|-------------|-------------------------------|-----------------|-----------------|
| 1 | 4.77 | 1.86 | 1.38 | 4.14 |
| 2 | .86 | 1.75 | 1.09 | 4.56 |
| 3 | 3.21 | .51 | -1.41 | 8.64 |
| 4 | 6.01 | 1.79 | -.05 | 2.34 |
| 5 | 7.09 | 1.77 | -.14 | 2.98 |
| 6 | 5.97 | 1.32 | .01 | 2.33 |
| 7 | 4.31 | 2.17 | -.62 | 3.15 |
| 8 | 1.71 | 1.25 | .62 | 6.18 |
| 9 | 2.45 | .61 | -.33 | 10.52 |
| 10 | 1.65 | .77 | -.58 | 5.07 |
| 11 | 1.82 | .92 | -.66 | 5.04 |
| 12 | 2.39 | .44 | 1.26 | 5.20 |
| 13 | 1.34 | .64 | -.26 | 3.54 |
| 14 | 2.46 | 1.65 | .21 | 4.03 |
| 15 | 1.76 | .67 | .62 | 3.42 |
| 16 | 6.29 | 1.89 | .43 | 3.16 |
| 17 | 5.17 | 1.30 | -.89 | 4.82 |
| 18 | 2.68 | 2.65 | .22 | 2.13 |
| 19 | 4.79 | 1.71 | .36 | 3.11 |
| 20 | 3.73 | 2.44 | .99 | 3.46 |
| 21 | 4.03 | 3.02 | .17 | 2.34 |
| 22 | 4.65 | 1.85 | .23 | 2.57 |
| 23 | 4.63 | 1.82 | .69 | 2.90 |
| 24 | 5.46 | 1.44 | -.42 | 3.62 |
| 25 | 4.00 | 1.73 | 1.32 | 5.66 |
| 26 | 4.93 | 1.97 | .95 | 3.84 |
| 27 | 4.37 | 1.79 | 1.00 | 4.69 |
| 28 | 6.41 | 2.39 | -.31 | 2.75 |
| 29 | 6.22 | 2.92 | -.39 | 2.30 |
| 30 | 5.53 | 3.10 | -.30 | 1.80 |
| 31 | 2.29 | 2.64 | 1.32 | 4.43 |
| 32 | 7.30 | 1.87 | -.26 | 2.93 |
| 33 | 6.68 | 1.97 | .15 | 2.79 |
| 34 | 3.82 | 3.00 | .55 | 2.31 |
| 35 | 5.45 | 2.09 | .56 | 3.47 |
| 36 | 6.70 | 2.07 | -.07 | 3.19 |
| 37 | 3.41 | 2.28 | 1.05 | 4.00 |
| 38 | 7.00 | 2.57 | -.60 | 3.00 |
| 39 | 6.20 | 2.60 | .09 | 2.00 |
| 40 | 7.56 | 1.95 | -.53 | 3.33 |

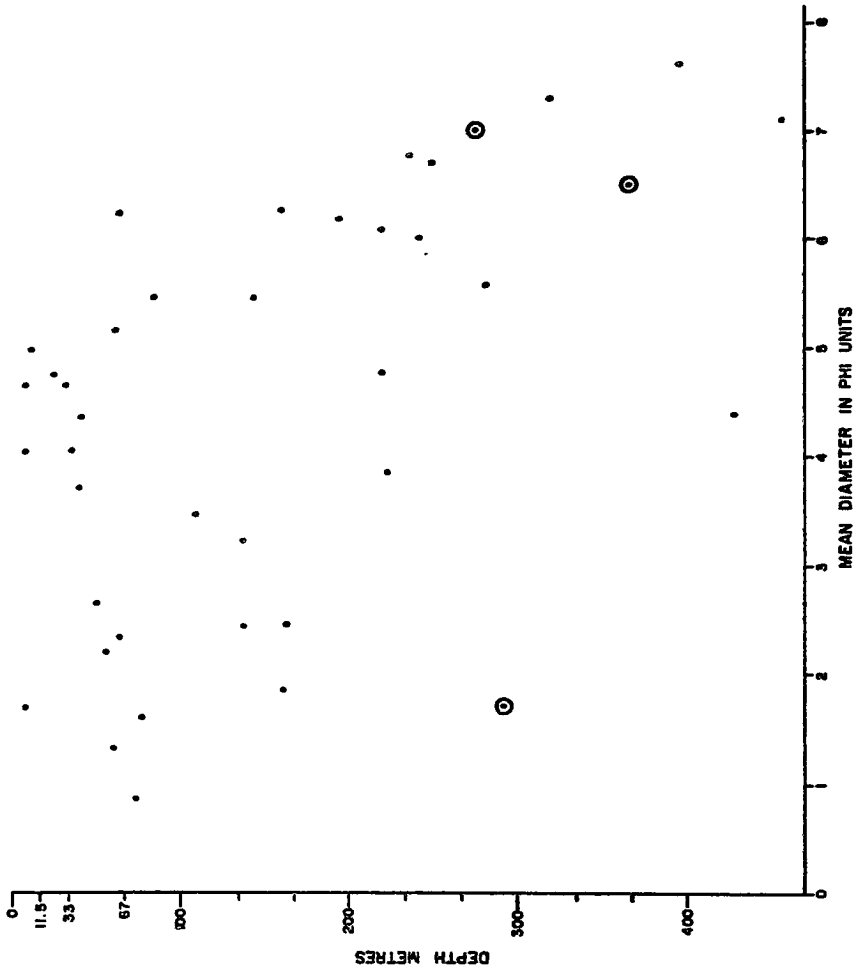


Figure 2 - The relation of mean size of grains to depth of occurrence of the faunal assemblages.

the present author at the International Planktonic Conference in Geneva, 1967. In the resulting data matrices (Appendices D - G) columns represent stations (samples).

The composition of the planktonic fauna, shown as percentage per species for each station, is given in Appendix D.

The percentage of foraminifera of all species per grade; the number of species in each class (porcellaneous, arenaceous, hyaline benthonic, planktonic) as a percentage of the total number of species; the foraminifera of each class as a percentage of the total benthonic foraminifera; and the foraminifera of each class as a percentage of the total foraminifera, are given for each station in Appendix B.

The number of benthonic foraminifers per species as a percentage of the total benthonic foraminifera of each station, and the number of benthonic foraminifers per species as a percentage of the total foraminifera of each station are contained in two matrices in Appendices F and G.

FACTOR-VECTOR ANALYSIS

One of the data matrices, that which gives the number of benthonic specimens per species as a percentage of the total benthonic foraminiferal fauna per station, was punched on cards by the computer. These cards constitute the input for a factor-vector analysis program described by Manson and Imbrie (1964).

In order to accommodate the large number of species (318) in the present study, the program was modified so that it could be run in the QQ mode. The statements of Table 3 were substituted for the original ones. Statements 074 and 079 must of necessity be changed; statements 197, 198, 218, 345, 377A are preferable to those published. The IBM 7094 computer at the Institute of Computer Science, University of Toronto, was made available to carry out the program. The systems tape in use with this installation necessitated the omission of the A PLOT subroutine in order to free space in memory.

The results of the factor-vector analysis are given on the re-ordered oblique projection matrix (Table 4) the elements of which are a measure of faunal similarity. Each faunal sample is resolved into contributions of seven end-members. Samples 36, 17, 31, 26, 7, 35 and 12 each have 100 per cent of end-members A, B, C, D, E, F and G, respectively. These samples are referred to as end-member samples, or simply, end-members. In the matrix they are underlined. Maximum faunal similarity is represented by unity, while zero indicates that samples have nothing in common. In this study a coefficient of faunal similarity greater than 0.69 is regarded as indicating a high degree of faunal similarity.

Based on available data the writer postulates that the most probable explanation of the distribution of benthonic foraminiferal faunal assemblages of the region relates them to their depth of occurrence. However, there are some samples which appear to be anomalous if a depth-assemblage zonation is accepted. Most of the anomalies may be explained in terms of sediments which have been displaced downslope.

A sediment which has been displaced downslope may (1) lose some material, (2) gain some material, or (3) retain substantially the same composition. In the first and second cases a lowering of the value of the coefficient of

MODIFYING STATEMENTS QQ-MODE

| | |
|---|----------|
| 21 DO 25 I = 1,100 | COVA 074 |
| DO 25 J = 1,100 | COVA 079 |
| SEG1 = SQRTF (ABSF((6.0*CMO*CM1)/(CM2*CP1*CP3))) | COVA 197 |
| SEG2 = SQRTF (ABSF((24.0*CMO*CM1*CM1)/(CM3*CM2*CP3*CP5))) | COVA 198 |
| A(I,12) = A(I,11)*SQRTF (ABSF(0.5+0.25*A(I,5))) | COVA 218 |
| IF(NORMAT) 1290,1290,2371 | COVA 345 |
| 2371 CONTINUE | COVA377A |

Table 3

- 11 -

Table 4

QQ-Analysis of Eastern Canadian Shelf Forams by Hooper
 Geology-Carleton try QQ Mode M7-5 Trial Series MTX 3
 Reordered Oblique Projection Matrix

| Name | Index | M0057C 36 | S44027 17 | M00043 31 | S10006 26 | S43027 7 | M0055A 35 | S43064 12 | Depth (M) | Mean, Phi |
|---------|-------|--------------|--------------|--------------|--------------|-------------|--------------|--------------|-----------|------------------|
| M0057C | 36 | 1.00 | 0.00 | 0.00 | 0.00 | 0.00 | 0.00 | 0.00 | 237 | 6.7 |
| M00047 | 32 | 0.99 | -0.01 | 0.08 | 0.01 | 0.09 | -0.09 | -0.22 | 317 | 7.2 |
| M00037 | 30 | 0.92 | -0.01 | 0.10 | -0.02 | 0.26 | -0.07 | -0.56 | 274 | 5.5 |
| *M00013 | 28 | 0.85 | -0.01 | 0.27 | -0.00 | 0.60 | -0.08 | -0.58 | 365 | 6-4 ¹ |
| M00053 | 33 | 0.73 | -0.01 | -0.23 | -0.03 | 0.18 | 0.02 | 0.26 | 250 | 6.6 |
| M00035 | 29 | 0.69 | -0.01 | 0.09 | -0.01 | 0.37 | -0.05 | -0.18 | 166 | 6.2 |
| *S43019 | 3 | 0.59 | 0.41 | 0.33 | 0.35 | -0.14 | 0.57 | -0.41 | 135 | 3.2 ² |
| S43017 | 1 | 0.58 | 0.06 | 0.53 | 0.15 | -0.10 | 0.29 | -0.55 | 237 | 4.7 |
| *S4457A | 24 | 0.51 | 0.51 | 0.36 | 0.48 | -0.10 | 0.41 | -0.50 | 82 | 5.4 ³ |
| M0054B | 34 | 0.48 | -0.01 | -0.21 | -0.06 | 0.01 | 0.21 | 0.46 | 222 | 3.8 |
| S44027 | 17 | 0.00 | 1.00 | 0.00 | 0.00 | 0.00 | 0.00 | 0.00 | 62 | 5.1 |
| S4432A | 21 | -0.04 | 0.99 | -0.03 | -0.17 | 0.02 | -0.08 | 0.05 | 34 | 4.0 |
| S4428C | 18 | -0.04 | 0.98 | -0.03 | -0.17 | 0.02 | -0.08 | 0.05 | 50 | 2.6 |
| S44035 | 23 | -0.04 | 0.98 | -0.03 | -0.17 | 0.02 | -0.08 | 0.05 | 12.5 | 4.6 |
| S44034 | 22 | -0.01 | 0.98 | -0.01 | -0.09 | 0.01 | -0.03 | 0.01 | 32 | 4.6 |
| S44029 | 19 | 0.01 | 0.98 | 0.02 | 0.03 | 0.01 | 0.01 | -0.01 | 26 | 4.7 |
| S4421B | 16 | 0.05 | 0.86 | 0.09 | 0.28 | -0.01 | 0.14 | -0.06 | 64 | 6.2 |
| S44030 | 20 | -0.01 | 0.78 | 0.11 | -0.13 | 0.04 | -0.01 | -0.03 | 38 | 3.7 |
| M00043 | 31 | 0.00 | 0.00 | 1.00 | 0.00 | 0.00 | 0.00 | 0.00 | 56 | 2.2 |
| S43052 | 10 | -0.42 | 0.01 | 0.90 | -0.04 | 0.42 | 0.02 | 0.22 | 74 | 1.6 |
| S43018 | 2 | -0.20 | -0.01 | 0.90 | -0.02 | 0.04 | -0.02 | 0.24 | 73 | .8 |
| *S43035 | 8 | 0.64 | -0.01 | 0.65 | 0.04 | 0.29 | -0.03 | -0.26 | 292 | 1.7 ⁴ |

*1 Displaced? Or could go in assemblage 5?

*2 Could go in assemblage No. 6?

*3 Correlation with this fauna uncertain, could go in 2, 4, 6. Probably 2

*4 Displaced? Coeff. 0.65 could go in assemblage No. 1?

(Cont.)

Table 4 (Cont.)

QQ-Analysis of Eastern Canadian Shelf Forams by Hooper
 Geology-Carleton try QQ Mode M7-5 Trial Series MTX 3
 Reordered Oblique Projection Matrix

| Name | Index | M0057C 36 | S44027 17 | M00043 31 | SI0006 26 | S43027 7 | M0055A 35 | S43064 12 | Depth (M) | Mean, Phi |
|---------|-------|--------------|--------------|--------------|--------------|-------------|--------------|--------------|-----------|------------------|
| SI0006 | 26 | 0.00 | 0.00 | 0.00 | 1.00 | 0.00 | 0.00 | 0.00 | 12 | 4.9 |
| SI0009 | 27 | 0.04 | 0.05 | 0.03 | 0.98 | -0.03 | 0.22 | -0.06 | 36 | 4.3 |
| SI0002 | 25 | -0.07 | -0.06 | -0.07 | 0.70 | 0.04 | -0.17 | 0.10 | 7 | 4.0 |
| S43027 | 7 | 0.00 | 0.00 | 0.00 | 0.00 | 1.00 | 0.00 | 0.00 | 430 | 4.3 |
| S43022 | 5 | 0.34 | -0.01 | -0.02 | 0.01 | 0.74 | -0.08 | -0.32 | 457 | 7.0 |
| M0000F | 40 | 0.04 | 0.01 | 0.14 | -0.04 | 0.72 | 0.36 | 0.10 | 398 | 7.5 |
| S43021 | 4 | 0.06 | -0.01 | -0.17 | 0.01 | 0.69 | -0.02 | 0.43 | 218 | 6.0 |
| *S4416B | 15 | -0.43 | 0.12 | 0.48 | -0.05 | 0.58 | 0.06 | 0.12 | 5 | 1.7 ⁵ |
| S43023 | 6 | 0.15 | -0.01 | -0.04 | 0.04 | 0.53 | -0.05 | -0.17 | 255 | 5.9 |
| M0055A | 35 | 0.00 | 0.00 | 0.00 | 0.00 | 0.00 | 1.00 | 0.00 | 142 | 5.4 |
| M00058 | 37 | 0.07 | 0.08 | 0.05 | 0.40 | -0.07 | 0.98 | -0.75 | 106 | 3.4 |
| M0064B | 39 | -0.04 | -0.01 | -0.05 | -0.04 | 0.01 | 0.77 | 0.09 | 191 | 6.1 |
| *M00063 | 38 | 0.24 | -0.01 | -0.06 | -0.06 | 0.06 | 0.76 | -0.07 | 274.5 | 6.9 ⁶ |
| S43064 | 12 | 0.00 | 0.00 | 0.00 | 0.00 | 0.00 | 0.00 | 1.00 | 65 | 2.3 |
| S43063 | 11 | -0.01 | -0.01 | 0.09 | -0.01 | -0.12 | 0.05 | 0.98 | 164 | 1.8 |
| S43065 | 13 | -0.13 | 0.02 | 0.27 | -0.02 | 0.06 | 0.01 | 0.93 | 58 | 1.3 |
| S43047 | 9 | 0.07 | 0.01 | 0.12 | 0.01 | -0.07 | 0.26 | 0.75 | 136 | 2.4 |
| S43082 | 14 | -0.05 | -0.00 | -0.14 | 0.01 | -0.05 | 0.06 | 0.42 | 165 | 2.4 |

*⁵ Probably statistically invalid. Only 14 specimens.

*⁶ High Coeff. Displaced downslope? Steep slope.

faunal similarity will result, when the sample is compared with the end-member of the depth-assemblage in which the sample originated in the first place. In the third case the coefficient of faunal similarity will remain unchanged, and it will normally be a 'high' value.

A very low coefficient of faunal similarity may indicate that the fauna is so unlike the end-member with which it is compared that a great deal of loss or gain on displacement may have occurred, or it may represent a quite distinct fauna. In the latter case a completely different facies to those now existing in the region, or a fauna of different age, may be indicated. These possibilities should be carefully considered if the sample has a low coefficient with respect to all other end-members and hence depth-assemblages in the region under study.

Samples of doubtful statistical validity may also produce anomalies. If the number of specimens counted is so low as to be statistically non-significant, then the number of species recorded is likely to be non-significant also, although the percentages will be quite high. In such cases, the sample studied is not representative of the fauna. Such a sample may have a moderate or even high coefficient of faunal similarity when compared with one or more end-member samples, and is not detectable as anomalous from the re-ordered oblique projection matrix. However, if also the sample has been grouped in an intermediate or deep water depth-assemblage, although it was, in fact, collected from shallow water, it is clearly suspect, as samples are not likely to be displaced upslope in nature.

In reading the re-ordered oblique projection matrix (Table 4) the following points should be borne in mind: (1) although the values are given to two decimal places only the first may be significant; (2) the first column (heading 'name') is the cruise number and station number of the sample; (3) the second column (heading 'index') is the sample number according to the sequence given in this study (see also cruise data -- Table 1); (4) the seven subsequent columns are headed by their end-member samples; (5) the tenth column (heading 'depth') is the depth in metres at which the sample was found. These values, which are not part of the computer output, have been added to the matrix by hand; (6) the eleventh column (heading 'mean phi') is the average size of sedimentary grains in the sample expressed in phi units. These values, which are not part of the computer output, have been added to the matrix by hand; and (7) the elements of the matrix (columns 3 to 9) are coefficients of faunal similarity.

There are seven groupings of samples in relation to end-members in the re-ordered oblique projection matrix. Each represents a benthonic foraminiferal assemblage. In each assemblage coefficients of faunal similarity 0.69 and greater are enclosed by a continuous line.

Assemblage No. 1, having special problems, will be considered as the last assemblage in this section.

Assemblage No. 2:

All samples have coefficients of faunal similarity higher than 0.69. Inspection of the list of depths of occurrence reveals a range from 12.5 to 64 metres. Mean grain size of sedimentary grains, in phi units, ranges from 2.6 to 6.2, with an average value of 4.4.

Assemblage No. 3:

Three samples have coefficients of faunal similarity above 0.69. Sample 8 with a coefficient of 0.65 when compared with end-member sample 31, has a moderate degree of faunal similarity. However, it also has a coefficient of 0.64 with respect to end-member sample 36 in assemblage 1. Its depth of occurrence at 292 m seems more appropriate to assemblage 1. Even so, it might be displaced downslope from assemblage 3 which, on the basis of samples 31, 10 and 2 has a depth range of 56 to 74 m. The mean size of sedimentary grains ranges from 0.8 to 2.2, with an average of 1.6 phi units. Sample 8, with a mean grain size of 1.7 phi fits well in this assemblage.

Assemblage No. 4:

Three samples, all with high coefficients, have a depth range of 7 to 36 metres. Mean grain sizes range from 4 to 4.9 phi, with an average of 4.4.

Assemblage No. 5:

Four samples have high coefficients of faunal similarity. They range in depth from 218 to 457 m. Sample 6 has a moderate coefficient and a depth (255 m) which is within the range for this depth-assemblage. Sample 15 has a moderate coefficient with respect to end-member sample 7, but it also has a moderate one with respect to end-member sample 31, so that it would almost as well fit assemblage 3. Its depth of occurrence (5 m) seems more appropriate to assemblage 3 with which it also agrees in mean grain size. However, this sample is based on a count of only 14 specimens and cannot be regarded as statistically reliable. It is probably better to disregard it. Mean grain size ranges from 4.3 to 7.5 phi, with an average of 6.1.

Assemblage No. 6:

All four samples in this assemblage have high coefficients of faunal similarity. The first three have a depth range from 106 to 191 m. Sample 38 with a depth of occurrence of 274.5 m is probably below the lower limit of the depth zone which this assemblage seems to characterize. This sample was recovered from near the foot of a slope, and displacement downslope seems a very reasonable explanation for its presence here. Mean grain size ranges from 3.4 to 6.9 phi with an average of 5.5

Assemblage No. 7:

Four samples have high coefficients. They range in depth from 58 to 164 m. Sample 14 has a moderate coefficient when compared with the end-member sample. It has no appreciable similarity to other end-members. It is therefore placed in this assemblage, extending the depth range by 1 m to 165 m. Mean grain size range is 1.3 to 2.4 phi, with an average of 2.0.

Assemblage No. 1:

The first six samples have high coefficients when compared to end-member sample 36. Their depths of occurrence range from 166 to 3.65 m. Sample 28 with a depth of 365 m has a moderate coefficient of faunal similarity with respect to end-member sample 7 and could possibly fit in assemblage 5. Alternatively, it could have been displaced downslope -- it occurred in deep water (365 m) when compared with the other samples in depth-assemblage 1. Its

mean grain size of 6.4 phi is appropriate to either assemblage 5 or assemblage 1. The mean grain size of assemblage 1 based on the first six samples ranges from 5.5 to 7.2 phi; the average is 6.4

Sample 3 has a moderate coefficient of faunal similarity when compared with end-member sample 36, and it has a comparable one with respect to end-member sample 35, suggesting it fits almost as well in depth-assemblage 6. On the basis of depth of occurrence (135 m) this alternative would be acceptable as it is within the depth range of that assemblage. The mean grain size of sample 3 is 3.2 phi, which is slightly outside the range of both assemblages, but it deviates less for assemblage 6 than it does for assemblage 1.

Sample 1 has a moderate coefficient when compared with end-member sample 36, as it has also when compared to end-member sample 31. Its depth (237 m) is more compatible with depth-assemblage 1. The mean grain size (4.7 phi), however, is not compatible, and inclusion of the sample in the assemblage necessitates the extension of the range of mean grain size, which becomes from 4.7 to 7.2 phi, with an average of 6.2.

Sample 24 has a moderate coefficient when compared with end-member sample 36, but it also has similar coefficients when compared with end-member samples 17, 26 and 35. Of these latter possibilities, association with end-member sample 17 (assemblage 2) seems the most reasonable on the basis of the value of the coefficient (0.51), the depth of occurrence (82 m) and the mean grain size (5.4 phi), although this arrangement would necessitate extending the lower limit of depth for depth-assemblage 2 from 64 to 82 m.

Sample 34 has a moderate to low coefficient (0.48) of faunal similarity when compared with end-member sample 36, and a similar value (0.46) when compared with end-member sample 12. However, its depth of occurrence is within the range of depth-assemblage 1, while it is not within that of depth-assemblage 7. Its mean grain size (3.8 phi) does not fit well into either assemblage.

DEPTH-ASSEMBLAGES

Seven depth-assemblages are indicated based on the interpretation of the re-ordered oblique projection matrix given above, and with samples 8 and 38 interpreted as displaced, sample 15 as statistically invalid, sample 3 transferred to assemblage 6, and sample 24 to assemblage 2. The depth-assemblages may be classified in two groups according to grain size. Group 1, low mean diameter, 0.8 to 2.5 phi, includes assemblages 3 and 7, and group 2, high mean diameter, 2.5 to 7.5 phi, includes assemblages 1, 2, 4, 5 and 6 (Table 5).

THE RELATION OF DEPTH-ASSEMBLAGES TO WATER MASSES

The region is dominated by the cold Labrador Current as it floods the shelf and slope of eastern Canada, extending well over the Grand Banks. Incursions of warmer slope water sometimes modify the water masses, especially over the outer shelf and shelf edge. On occasion, frictionally induced eddies bring warm Gulf Stream water over the outer and inner shelf.

Table 5

Depth-Assemblages

| Depth- assemblage | Depth range metres | Zone | Mean grain size of the assemblage in phi units | |
|----------------------|-------------------------------|--------------|--|--|
| No. 1 | 82? 135? 166 - 317 or 375? | Deep | 6.2 (approx.) | Laurentian Channel slope in the NW. Gulf and south of Newfoundland |
| No. 2 | 12.5 - 64 or 82 | Shallow | 4.4 | Chaleur Bay |
| No. 3 | 56 - 74 | Shallow | 1.6 | NW. Gulf St. Lawrence and the Bank south of Newfoundland |
| No. 4 | 7 - 36 | Shallow | 4.4 | Bay of Sept-Iles |
| No. 5 | 218 - 457 | Deep | 6.1 | St. Lawrence Channel |
| No. 6 | 106 - 191 | Intermediate | 5.0 (approx.) | NW. Gulf of St. Lawrence |
| No. 7 | 58 - 165 | Intermediate | 2.0 | SE. Grand Banks and the edge of the shelf |

Hachey (1961) has summarized the oceanography of the Gulf of St. Lawrence and the continental shelf. For the Nova Scotian sector of the shelf he recognizes three water-mass layers. The 'upper' layer is of variable thickness, but it has an average lower limit at approximately 85 metres. Inshore waters consist of this layer. The cold intermediate layer, which may be continuous with the intermediate layer of Lauzier in the Gulf of St. Lawrence, has limits at approximately 50 and 160 metres. This layer determines the water characteristics on most of the offshore banks. The upper limit of the 'bottom' layer of relatively warmer water occurs at approximately 170 metres. This layer extends to the bottom on the shelf.

In the Gulf of St. Lawrence, Lauzier has recognized three water-mass layers (Hachey, 1961). The surface layer has an approximate lower limit of 70 metres. Wide variations of temperature and salinity are characteristic of it. Inshore waters consist of this layer. The cold intermediate layer ranges from approximately 70 to 160 metres. A relatively warmer deep layer is characteristic of the Laurentian Channel and its slopes. It ranges from approximately 180 metres to the bottom of the Channel (about 500 metres).

Bailey (1954) pointed out that at the confluence of the Labrador Current and the Gulf Stream in the area southwest of the Grand Banks, and to the westward, large scale mixing processes occur that provide a type of 'slope water' that largely contributes to the characteristic waters that are in contact with the continental shelf. In August, the surface layer over the Grand Banks has temperatures ranging from 13°C, in the north, to 19°C at the southern shelf edge. Salinities range from 31 to 33‰. At 50 metres, the temperatures range from -1°C, in the north, to more than 10°C (with a very steep temperature gradient), near the southern shelf edge. At 100 metres temperatures range from -1°C, in the north, to more than 8°C at the southern shelf edge. Salinities range from 33.0 to 35.0‰. At 100 metres the influence of bottom topography is most pronounced as the main banks are of depths less than 100 metres. Waters of oceanic origin underlie all coastal waters where there is sufficient depth.

The seven depth-assemblages suggested by the factor-vector analysis are correlated with the three water-mass layers of Lauzier for the Gulf of St. Lawrence and the three water-mass layers of Hachey for the Nova Scotian shelf. These latter layers may be extrapolated eastward where they are modified by slope water as indicated by Bailey (1954, and personal communication) for the Grand Banks.

Reference to figures 3 and 4 shows that three shallow depth-assemblages are found in Lauzier's and Hachey's surface layer. They are (a) depth-assemblage 2 in the Chaleur Bay area and depth-assemblage 4 in the Sept-Iles area, both are in the northwest Gulf of St. Lawrence; and (b) depth-assemblage 3, mainly on the shelf, south of Newfoundland, but with one station (31) in the northwest Gulf of St. Lawrence.

Depth-assemblages 2 and 4 are shallow bay assemblages which are subjected to lower than normal marine salinities. Depth-assemblage 3 is slightly deeper and its environment is typically more saline.

Two intermediate depth-assemblages are found in Lauzier's and Hachey's intermediate water-mass layer. They are (a) depth-assemblage 6 in the northwest Gulf of St. Lawrence and (b) depth-assemblage 7 on the southeast banks (the Tail) and the shelf edge extending eastwards to Flemish Cap. The water-

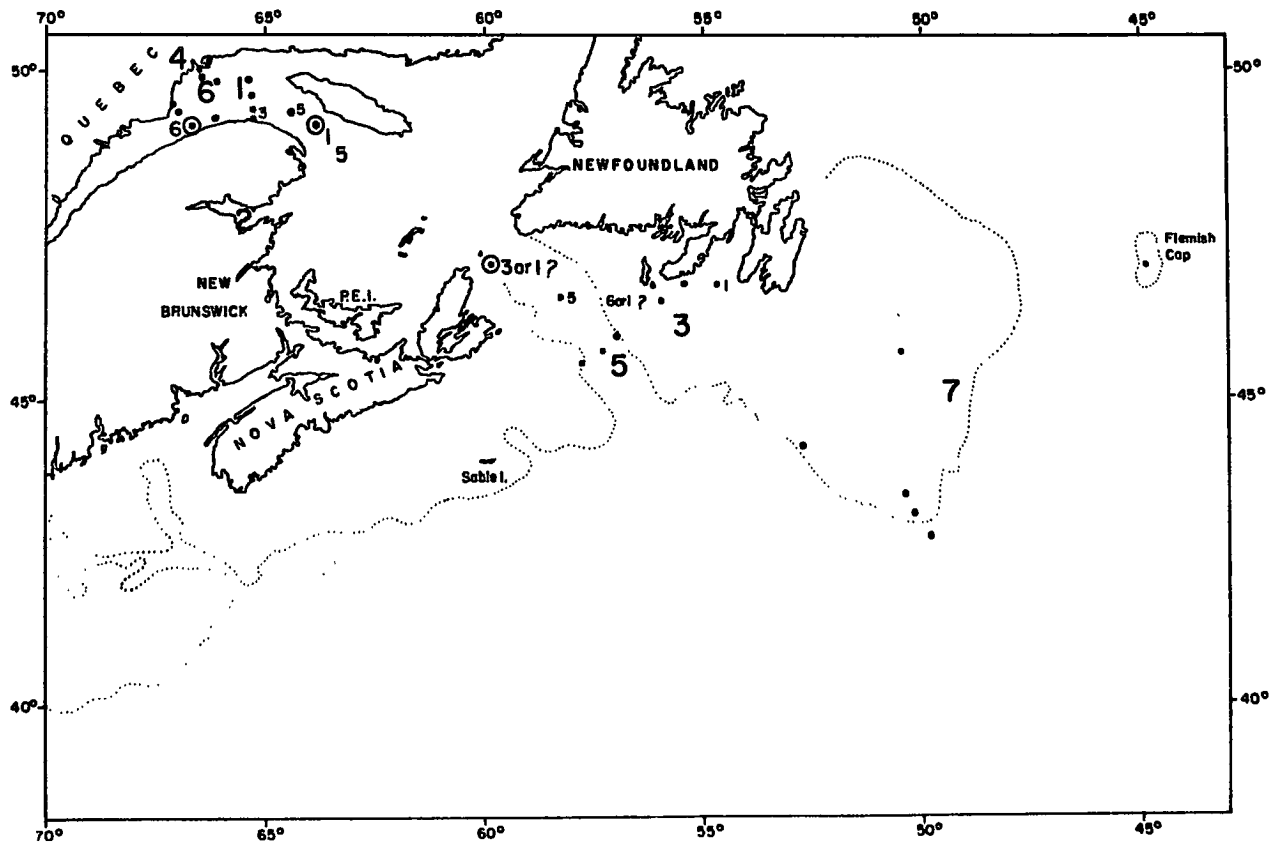


Figure 3 - Chart of depth assemblages. Numerals indicate depth assemblage according to text.

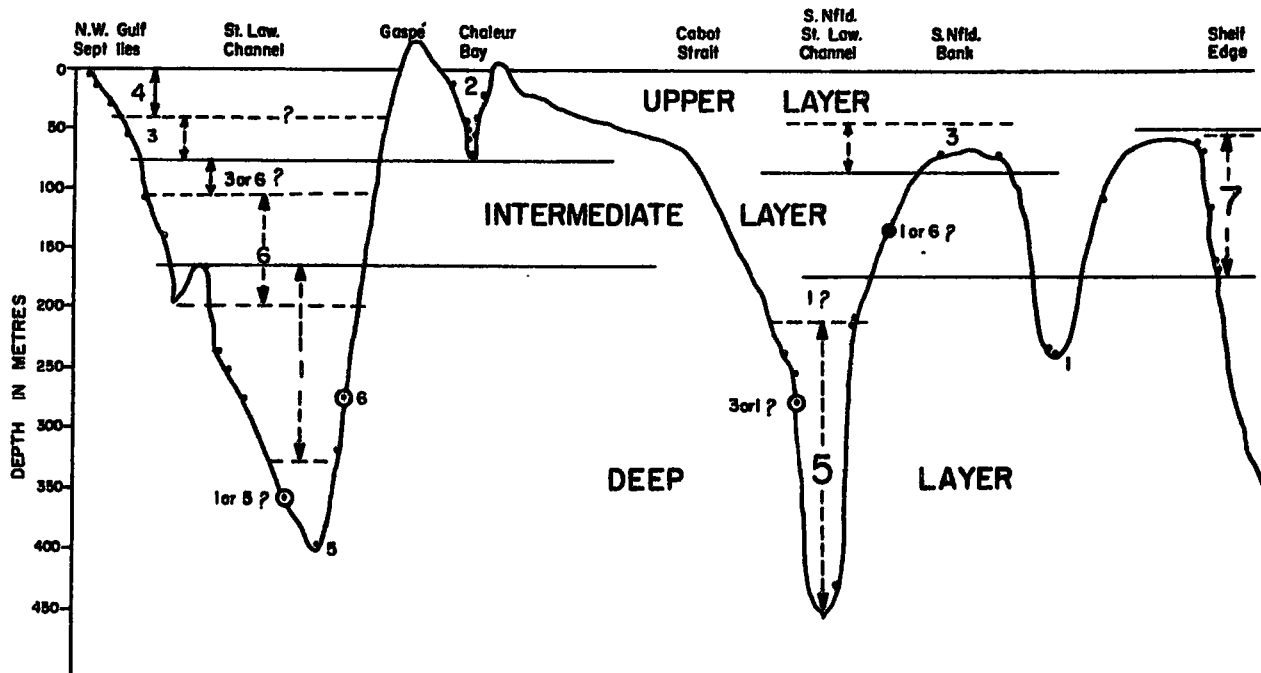


Figure 4 - Diagrammatic profile of depth-assemblages. Assemblages are indicated by numerals according to the text.

mass associated with this latter depth-assemblage is liable to mixing with slope water.

Two deep depth-assemblages are noted. They are found in the Deep Channel layer of Lauzier and the Bottom layer of Hachey. Depth-assemblage 1 is best represented in the northwest Gulf of St. Lawrence, but it extends south-eastward and is also found on the deeper parts of the shelf, south of Newfoundland.

Depth-assemblage 5 is characteristic of the Laurentian Channel south of Cabot Strait and Newfoundland. This assemblage, which tends to occur at greater depths than assemblage 1, is also represented at one station (40) in the Laurentian Channel in the northwest Gulf of St. Lawrence.

SPECIES COMPOSITION OF MICROFAUNAL ASSEMBLAGES

The species composition of the benthonic foraminiferal assemblages is given in Appendix A. In these faunal lists, which are printed by computer, official names are followed by the name of the original author and the year in which the species was erected. Unofficial names of possible varieties are in an abbreviated form that is intended as a guide, and they have no official status. Sample 8 is assigned to assemblage 1 from assemblage 3. This assignment, which is based on depth and coefficient of similarity, is very tentative.

ASSEMBLAGE-UBIQUITOUS SPECIES

Some forms are found in each and every sample of an assemblage. They are here called assemblage-ubiquitous species, because they are ubiquitous within the assemblage. They may also occur in other assemblages, and they may even be assemblage-ubiquitous for more than one assemblage. For example, *Angulogerina fluens* Todd, 1947, is ubiquitous in assemblages 1 and 3.

The species are given in Appendix B.

ASSEMBLAGE-INDICATOR SPECIES

They are here called indicator species. They are restricted to one assemblage. Their abundance is usually less than five per cent. Of these forms some are fully described in the literature and are identifiable. Each of these is given with author's name and date of the first description. They are the most useful as indicator species (Appendix C).

Other forms are of three kinds as follows (1) those that are thought to be new species, but that have not yet been described; (2) forms that might possibly be new species, but that are comparable to or have affinities with known species, and that may be merely variants of them, (these forms are less useful as indicator species); and (3) forms that are indeterminate. These have the least usefulness as indicators.

DISCUSSION

Sources of possible error:

The samples were collected by means of different instruments. Those collected by means of Dietz-Lafond grab possibly are more liable to inversion and distortion than those collected by means of Phleger type corer. In the MARC series special care was taken to ensure that inversion and distortion of sediment did not occur during shipment. In the S43 and S44 series no special precautions were taken.

Laboratory procedures produce error. For example, loss of material occurs during handling, weighing and transfer in the various stages of mechanical and faunal analysis. Checks were done from time to time on weighings and foraminiferal counts -- they always proved reproducible within a tolerance of three per cent. .

Samples of the S43 and S44 series were dried out, and some agglutinating foraminifers possibly were disintegrated as a result. Thus, these samples may be deficient in arenaceous forms when compared with those of the MACR series. It is, however, interesting to note that the factor-vector analysis distinguishes an arenaceous Chaleur Bay assemblage (dried out) and an arenaceous Sept-Iles Bay assemblage (not dried out).

Forty stations covering a region of 300,000 sq. miles may not constitute a sufficient number to give a statistically valid sampling of the assemblages present. However, this depends upon the degree of variation of the assemblages. If there is a large number of assemblages then 40 localities may not provide for adequate sampling. On the other hand, if the region is characterized by rather uniform conditions the number of assemblages is likely to be low, and 40 stations may represent an adequate sample. Future addition of data from more stations possibly will result in the removal of some assemblage-indicator species from the list.

The writer believes that this preliminary survey gives the broad picture of the distribution of the main benthonic foraminiferal depth-assemblages of the region, and provides a framework into which undiscovered microfaunal assemblages might be expected to fit. More detailed sampling and more refined taxonomy probably will result in subdivision of the main depth-assemblages described here. In particular, it is to be expected that the many bays and estuaries of the upper water-mass layer, with their wide variation of temperature, salinity and other factors, contain many different environments and will give rise to a corresponding diversity of benthonic foraminiferal assemblages.

ACKNOWLEDGEMENTS

Financial assistance was provided by the National Research Council and the Department of Energy, Mines and Resources of Canada. Thanks are due to the Captains and crews of CNAV *SACKVILLE* and the *MARC ST.* for assistance in the collection of bottom samples, and to C.T. Schafer, G. Vilks, F.J.E. Wagner and B.R. Pelletier of the Atlantic Oceanographic Laboratory of the Bedford Institute for their critical reading of the manuscript. The sustained support of this project by B.R. Pelletier during times which were often difficult and trying is especially appreciated.

REFERENCES

- Athearn, W.D., 1954. Bottom sediments and foraminifera from Labrador. Tech. Rept. 54-42, Woods Hole Oceanogr. Inst. 16 pp.
- Bailey, W.B., Templeman, W. and Hunt, R.P., 1954. The horizontal distribution of temperatures and salinities off the Canadian Atlantic Coast. Ms. Rept. No. 584, Fish. Res. Bd. Canada, Biol. St. Andrews, N.B., 23 pp.
- Bartlett, G.A., 1962. M.Sc. Thesis, Carleton University, Ottawa, 262 pp.
- _____, 1963. Preliminary study of foraminiferal distribution on the Atlantic Continental Shelf, southeastern Nova Scotia. B.I.O. Rept. 63-3, Bedford Inst. Oceanogr. 11 pp.
- _____, 1964. Benthonic foraminiferal ecology in St. Margaret's Bay and Mahone Bay, southeast Nova Scotia. B.I.O. Rept. 64-8, Bedford Inst. Oceanogr. 159 pp.
- _____, 1965. Preliminary investigation of benthonic foraminiferal ecology in Tracadie Bay, P.E.I. B.I.O. Rept. 65-3, Bedford Inst. Oceanogr. 57 pp.
- Cushman, J.A., 1918-31. Foraminifera of the Atlantic Ocean, Pts. 1-8. U.S. Nat. Mus. Bull. No. 104.
- Dawson, G.M., 1870. On foraminifera from the Gulf and River St. Lawrence. Canadian Naturalist, New Series, vol. 5, pp. 172-179, 1 pl.
- _____, 1860. Tertiary fossils from Labrador, Maine, etc., and remarks on the climate of Canada in the Newer Pliocene or Pleistocene Period. Canadian Naturalist, vol. 5, pp. 188-200.
- Hachey, H.B., 1961. Oceanography and Canadian Atlantic waters, Fish. Res. Bd. Can. Bull. 134, 120 p.
- Hooper, K., 1967. Processing foraminiferal data: a computer program. International Conference on Planktonic Microfossils. Geneva, Sept. - Oct., 1967. Brill, Leiden.
- Inman, D.L., 1951. Measures for describing the size distribution of sediments. Ref. 51-45, Submarine Geol. Rept. No. 15, Scripps Inst. Oceanogr., Univ. Cal.

- Manson, V. and Imbrie, J., 1964. Fortran program for Factor and Vector analysis of geologic data using an IBM 7090 or 7094/1401 Computer System. Special Distribution Publication No. 13, State Geol. Surv. and Univ. Kansas, 47 pp.
- Sproule, H., 1962. B.Sc. (Hons.), Thesis, Carleton University, Ottawa. 32 pp.
- Twenhofel, W.H. and Tyler, S.A., 1941. Methods of study of sediments. McGraw-Hill, N.Y., 183 pp.
- Whiteaves, J.F., 1869. On some results obtained by dredging in Gaspé and off Murray Bay. Can. Nat. and Quart. Journ. Sci. Sept.
- _____, 1875. Notes on a deep sea dredging expedition round the Island of Anticosti in the Gulf of St. Lawrence. Ann. & Mag. Nat. Hist. Nov.

APPENDIX A

SPECIES COMPOSITION OF FAUNAL ASSEMBLAGES

THE FOLLOWING 142 SPECIES OCCUR IN BENTHIC FORAMINIFERAL ASSEMBLAGE 1 OF THE FACTOR ANALYSIS IN OO-MODE FOR M=7

| NO. | SPECIES NAME | STATION NUMBERS | | | | | | | | | |
|-----|---|-----------------|------|------|------|------|------|------|------|------|--|
| | | 1 | 8 | 28 | 29 | 30 | 32 | 33 | 34 | 36 | |
| | | DEPTH IN METERS | | | | | | | | | |
| | | 237 | 292 | 365 | 166 | 274 | 317 | 250 | 222 | 237 | |
| 1 | ADERCOTRYMA GLOMERATA (BRADY) 1878 | 4.0 | | | 0.2 | | | | | 1.3 | |
| 2 | ALVEOLOPHRAGMIUM JEFFREYSI (WILLIAMSON) 1858 | | | 0.1 | 0.2 | | | 0.2 | | 0.7 | |
| 4 | ASTRONIONION STELLATUM CUSHMAN + EDWARDS 1937 | | 2.0 | | 0.7 | | | | | 2.6 | |
| 5 | ANGULOGERINA FLUENS TODD 1947 | 0.2 | 1.6 | 0.7 | 6.4 | 3.8 | 3.2 | 19.1 | 27.3 | 12.3 | |
| 6 | BOLIVINA SP. | 0.2 | 0.3 | | | | | | | | |
| 7 | BOLIVINA PSEUDOPUNCTATA HOGGLUND 1947 | 1.2 | | | | | 0.4 | | | | |
| 8 | BULIMINA SP. | R | | | | | | | | | |
| 9 | BULIMINA EXILIS BRADY 1884 | | 4.6 | 19.6 | 2.5 | 4.9 | 8.5 | 9.8 | 0.5 | 1.6 | |
| 10 | BUCCELLA INUSITATA ANDERSEN 1952 | 11.7 | 17.9 | 27.5 | 19.7 | 27.6 | 49.1 | 10.8 | 3.9 | 26.9 | |
| 11 | BUCCELLA FRIGIDA (CUSHMAN) 1922 | 1.5 | 1.6 | 3.3 | 0.3 | | 0.4 | | | 0.1 | |
| 12 | CASSIDULINA ISLANDICA NORVANG 1945 | R | 5.5 | 3.0 | 7.8 | 2.2 | 20.8 | 15.9 | 17.0 | 19.5 | |
| 13 | CASSIDULINA TERETIS TAPPAN 1951 | 42.6 | 6.2 | 2.4 | 0.2 | | | 1.8 | 2.8 | 6.6 | |
| 14 | CASSIDULINA NORCROSSI CUSHMAN 1933 | 0.5 | | 3.5 | 5.7 | 1.8 | | 1.6 | | | |
| 15 | CIBICIDES LOBATULUS (WALKER + JACOB) 1798 | | 15.0 | 1.4 | 1.3 | 1.5 | | 0.2 | 1.2 | | |
| 17 | CIBICIDES SP. | 0.1 | 0.3 | | R | | | | | | |
| 18 | CIBICIDES PSEUDOUNGERIANUS (BRADY) 1884 | R | | | | | | | | | |
| 20 | DENTALINA ITTAI LOEBLICH + TAPPAN 1953 | 0.2 | | | | | | | | | |
| 23 | PROTELEPHIDIUM SP. | | 1.3 | | | | | | | | |
| 24 | DISCORBIDAE IMMATURE | | 0.6 | | | | | | | | |
| 26 | ELPHIDIUM BARTLETTI CUSHMAN 1933 | | 2.6 | | | | | | | | |
| 27 | ELPHIDIUM SP. CF. E. BARTLETTI | | | 2.0 | 0.1 | | | 8.1 | | | |
| 28 | ELPHIDIUM SP. | 0.2 | | | | | | | | 0.5 | |
| 29 | ELPHIDIUM CLAVATUM CUSHMAN 1930 | 4.0 | 2.3 | 10.5 | 5.6 | | 0.4 | | | 3.0 | |
| 31 | ELPHIDIUM SUBARCTICUM CUSHMAN 1944 | | 1.0 | | | | | | | | |
| 32 | ELPHIDIUM INCERTUM CUSHMAN 1930 | 0.2 | 0.6 | | | 0.3 | | | | R | |
| 33 | ESOSYRINX CURTUS (CUSHMAN + OZAWA) 1930 | | 0.3 | 0.3 | | | | | | | |
| 34 | EGGERELLA SCABRA (WILLIAMSON) 1858 | 0.2 | | | | | | | | | |
| 35 | ELPHIDIELLA ARCTICA (PARKER + JONES) 1864 | | | | | 0.1 | | | | | |
| 36 | EPISTOMINELLA NARAENSIS (KUMANO) 1950 | 15.1 | 1.0 | | | | | | | | |
| 37 | FISSURINA MARGINATA (MONTAGU) 1803 | | 0.3 | | 0.6 | | | | | | |
| 39 | FISSURINA SEMIMARGINATA (REUSS) 1870 | | | | 0.2 | | | | | | |
| 40 | FISSURINA CUCURBITASEMA LOEBLICH + TAPPAN 1953 | 0.2 | | | | | | | | | |
| 41 | GLANDULINA LAEVIGATA (ORBIGNY) 1826 | | | 0.1 | 0.1 | 0.3 | | 0.4 | | | |
| 42 | GLOBOBULIMINA AURICULATA (BAILEY) 1851 | | 6.8 | 1.2 | 1.1 | 5.3 | 1.1 | 6.1 | 10.9 | 7.1 | |
| 47 | GUTTULINA SP. | | 0.3 | | | | 0.7 | | | | |
| 49 | LAGENA FLATULENTA LOEBLICH + TAPPAN 1953 | | | | | 0.1 | | | | | |
| 50 | LAGENA LAEVIS (MONTAGU) 1803 | | | 0.2 | 0.2 | 0.4 | | 0.4 | 0.2 | 0.4 | |
| 51 | LAGENA MERIDIONALIS WIESNER 1931 | | | | | | | | R | | |
| 52 | LAGENA MOLLIS CUSHMAN 1944 | R | | 0.3 | 0.8 | 1.0 | 0.7 | 2.4 | 0.1 | 0.6 | |
| 53 | LAGENA SEMILINEATA WRIGHT 1886 | | | R | | | | | | | |
| 56 | NONION SP. | R | 0.3 | | | | | | | | |
| 59 | NONION (ELLA) LABRADORICA | R | | | 0.2 | | | 0.4 | | | |
| 60 | NONION LABRADORICUM (DAWSON) 1860 | | 5.2 | 2.3 | 1.5 | 2.9 | 2.1 | 5.3 | 4.6 | 9.0 | |
| 61 | NONION SP. CF. N. POMPILIODES | | 0.3 | | | | | | | | |
| 62 | NONIONELLA AURICULA HERON-ALLEN + EARLAND 1930 | R | | | 0.3 | | | | | | |
| 66 | PARAFISSURINA FUSULIFORMIS LOEBLICH + TAPPAN 1953 | | | | 0.2 | | | | | | |
| 69 | PROTELEPHIDIUM ORBICULARE (BRADY) 1881 | R | 3.3 | | R | | | | | | |
| 70 | QUINQUELOCULINA SP. CF. O. ARCTICA | | | | | | 1.1 | | | | |

BENTHIC FORAMINIFERAL ASSEMBLAGE 1 FOR M=7 (CONTINUED)

| NO. | SPECIES NAME | STATION NUMBERS | | | | | | | | | |
|-----|---|-----------------|-----|------|------|------|-----|-----|-----|-----|--|
| | | DEPTH IN METERS | | | | | | | | | |
| | | 1 | 8 | 28 | 29 | 30 | 32 | 33 | 34 | 36 | |
| | | 237 | 292 | 365 | 166 | 274 | 317 | 290 | 222 | 237 | |
| 79 | REOPHAX CURTUS CUSHMAN 1920 | | | | | | | 0.2 | 0.2 | | |
| 80 | REOPHAX SCORPIURUS MONTFORT 1808 | | | | 0.2 | | | | | | |
| 82 | REOPHAX SCOTTII CHASTER 1890-91 | R | | | | 0.1 | 1.8 | | | 0.4 | |
| 83 | SACCAMMINA SP. | | | R | | 0.1 | 0.4 | | | | |
| 84 | SPIROPECTAMMINA BIFORMIS (PARKER + JONES) 1865 | 3.5 | | | | | | | 0.1 | | |
| 85 | REOPHAX ARCTICA BRADY 1881 | 1.6 | | | | | | | | | |
| 89 | TROCHAMMINA OCHRACEA (WILLIAMSON) 1858 | 0.6 | | | | | | | | | |
| 91 | PROTEONINA ATLANTICA CUSHMAN 1944 | | | | 0.1 | | | 0.6 | 8.8 | | |
| 95 | ARENACEOUS INDETERMINATE | | | | | | 0.4 | | | 0.4 | |
| 97 | AMMODISCUS SP. | | | | | | | 0.2 | | | |
| 99 | CIBICIDES SP. CF. C. LOBATULUS | 6.1 | | | | | | | | | |
| 100 | ELPHIDIUM SP. CF. E. CLAVATUM | | | | | 1.0 | | 8.3 | | | |
| 101 | EGGERELLA ADVENA (CUSHMAN) 1922 | R | 1.3 | | | | | | | | |
| 102 | GLOMOSPIRA SP. | R | | | | | | | | | |
| 106 | NONIONELLA SP. CF. N. AURICULA | | 2.0 | | | | | | | | |
| 108 | ELPHIDIIDAE IMMATURE | | | | 1.0 | | | | | | |
| 109 | PSAMMOSPHAERA SP. | | | | R | | | | | | |
| 116 | TROCHAMMINA SP. | | | | | | | | | 0.6 | |
| 120 | ASTRONONION SP. | 0.4 | | | | | | | | | |
| 121 | BOLIVINA SUBAENARIENSIS CUSHMAN 1922 | | 1.9 | 0.1 | R | | | | R | | |
| 122 | BOLIVINA SUBSPINESCENS CUSHMAN 1922 | | | | 0.3 | | | | | | |
| 123 | BULIMINA ACULEATA ORBIGNY 1826 | | | 0.6 | 24.3 | | 1.1 | | | | |
| 124 | BULIMINA MARGINATA ORBIGNY 1826 | | | 18.0 | 4.9 | 39.9 | | 4.7 | 7.5 | 3.1 | |
| 127 | TRITAXIS CONICA (PARKER + JONES) 1865 | | 0.6 | | | | | | 0.4 | | |
| 130 | DENTALINA FROBISHERENSIS LOEBLICH + TAPPAN 1953 | R | | | | | | | | | |
| 138 | LAGENA GRACILLIMA (SEGUENZA) 1862 | | 0.6 | | | | | | | 0.2 | |
| 147 | PULLENIA QUINQUELOBA (REUSS) 1851 | 0.2 | 8.2 | 0.9 | 2.8 | 1.4 | 0.7 | 0.2 | | | |
| 149 | VIRGULINA COMPLANATA EGGER 1893 | | 0.7 | | 3.2 | | | 2.0 | 0.8 | 2.6 | |
| 166 | ANGULOGERINA ANGULOSA (WILLIAMSON) 1858 | 1.8 | | | | | | | | | |
| 167 | BULIMINA SP. CF. B. EXILIS | R | | | | | | | | | |
| 168 | BUCCELLA SP. | R | | | | | | | | | |
| 169 | BULIMINA SP. CF. B. FUSIFORMIS | R | | | | | | | | | |
| 170 | CASSIDULINA SP. CF. C. ISLANDICA | 2.9 | | | | | | | | | |
| 171 | DENTALINA SP. | R | | | R | | | | R | | |
| 172 | EPONIDES SP. | R | 0.3 | | | | | | | | |
| 173 | GAVELINOPSIS SP. NOV. | R | | | | | | | | | |
| 174 | LAGENA SP. | R | | | | | 0.1 | | | | |
| 175 | NONION SP. CF. N. SCAPHUM | R | | | | | | | | | |
| 176 | NONIONELLA SP. | R | | | | | | | | | |
| 177 | ODOLINA SP. CF. O. CAUDIGERA | R | | | | | | | | | |
| 178 | TEXTULARIA SP. CF. T. TORQUATA | 0.6 | | | | | | | | | |
| 179 | TROCHAMMINA LOBATA CUSHMAN 1944 | R | | | | | | | 0.1 | | |
| 180 | TROCHAMMINA SP. CF. T. NANA | 0.2 | | | | | | | | | |
| 181 | TROCHAMMINA SQUAMATA JONES + PARKER 1860 | R | | | | | | | 0.1 | | |
| 182 | TEXTULARIA SP. | R | | | | | | | | | |
| 183 | DISCORBIS SP. CF. D. ORTUSA | R | | | | | | | | | |
| 188 | CIBICIDES SP. CF. C. REFULGENS | | | | | | 0.7 | | | | |
| 195 | ANDMALINA SP. | | 0.3 | | | | | | | | |

THE FOLLOWING 27 SPECIES OCCUR IN BENTHIC FORAMINIFERAL ASSEMBLAGE 2 OF THE FACTOR ANALYSIS IN OO-MODE FOR M=7

| NO. | SPECIES NAME | STATION NUMBERS | | | | | | | | | |
|-----|---|-----------------|------|------|------|------|------|------|-----|------|--|
| | | 16 | 17 | 18 | 19 | 20 | 21 | 22 | 23 | 24 | |
| | | DEPTH IN METERS | | | | | | | | | |
| | | 64 | 62 | 50 | 26 | 38 | 34 | 32 | 13 | 82 | |
| 1 | ADERCOTRYMA GLOMERATA (BRADY) 1878 | | 0.1 | | | | | | | 5.9 | |
| 2 | ALVEOLOPHRAGMIUM JEFFREYSI (WILLIAMSON) 1858 | | 0.1 | | | | | | | | |
| 10 | BUCCELLA INUSITATA ANDERSEN 1952 | | | | 0.1 | | | | | 8.4 | |
| 11 | BUCCELLA FRIGIDA (CUSHMAN) 1922 | 1.8 | | 0.6 | 0.5 | | | | | 0.7 | |
| 12 | CASSIDULINA ISLANDICA NORVANG 1945 | 1.8 | | | | | | | | | |
| 13 | CASSIDULINA TERETIS TAPPAN 1951 | | 0.1 | | 1.2 | 11.5 | 0.4 | | | 19.3 | |
| 14 | CASSIDULINA NORCROSSI CUSHMAN 1933 | | | | | | | | | 5.9 | |
| 18 | CIBICIDES PSEUDOUNGERIANUS (BRADY) 1884 | 3.5 | | | | | | | | | |
| 29 | ELPHIDIUM CLAVATUM CUSHMAN 1930 | 3.6 | 0.1 | 0.3 | 0.9 | 5.4 | 0.2 | | | | |
| 32 | ELPHIDIUM INCERTUM CUSHMAN 1930 | | | | 0.1 | | | | | | |
| 34 | EGGERELLA SCABRA (WILLIAMSON) 1858 | 37.5 | 73.3 | 97.6 | 52.2 | 41.5 | 92.6 | 65.8 | 100 | 14.8 | |
| 59 | NONION (ELLA) LABRADORICA | | | 0.1 | | | | | | | |
| 60 | NONION LABRADORICUM (DAWSON) 1860 | | | | 0.1 | | | | | | |
| 79 | REOPHAX CURTUS CUSHMAN 1920 | | | | 0.1 | 2.6 | 0.2 | | | | |
| 84 | SPIROPLECTAMMINA BIFORMIS (PARKER + JONES) 1865 | 28.6 | 18.0 | | 14.0 | | | 3.4 | | 27.7 | |
| 85 | REOPHAX ARCTICA BRADY 1881 | 14.3 | 4.2 | | 3.8 | | | 13.7 | | 9.2 | |
| 88 | TEXTULARIA TORQUATA PARKER 1952 | 7.2 | 3.4 | | 17.8 | | | 17.1 | | 1.5 | |
| 96 | ALVEOLOPHRAGMIUM CRASSIMARGO (NORMAN) 1892 | 1.7 | 0.4 | | | 0.9 | | | | 6.6 | |
| 154 | ELPHIDIUM INCERTUM AFF. E. CLAVATUM | | | 0.4 | 0.4 | | | | | | |
| 211 | RECURVOIDES SP. | | | | 0.1 | | | | | | |
| 253 | REOPHAX FUSIFORMIS (WILLIAMSON) 1858 | | 0.1 | 0.2 | | | 0.2 | | | | |
| 254 | TROCHAMMINA SOUAMATA AFF. T. MACRESCENS | | 0.1 | | | | | | | | |
| 256 | TROCHAMMINA SP. CF. T. ADAPERTA | | | 0.5 | 1.1 | | | | | | |
| 257 | GYROIDINA QUINQUELOBA UCHIO 1960 | | | 0.2 | 1.1 | | | | | | |
| 258 | DISCORBIS SP. CF. PNINAELLA PULCHELLA | | | 0.1 | | | | | | | |
| 259 | INCERTAE SEDIS LEPTODERMELLA | | | | 6.6 | 38.1 | 6.2 | | | | |
| 260 | AMMOTIUM CASSIS (PARKER) 1870 | | | | | | 0.2 | | | | |

THE FOLLOWING 110 SPECIES OCCUR IN BENTHIC FORAMINIFERAL ASSEMBLAGE 3 OF THE FACTOR ANALYSIS IN OO-MODE FOR M=7

| NO. | SPECIES NAME | STATION NUMBERS | | | |
|-----|--|-----------------|------|------|----|
| | | DEPTH IN METERS | 2 | 10 | 31 |
| | | | 73 | 74 | 56 |
| 1 | ADERCOTRYMA GLOMERATA (BRADY) 1878 | 0.2 | | 0.1 | |
| 2 | ALVEOLOPHRAGMIUM JEFFREYSI (WILLIAMSON) 1858 | R | | | |
| 3 | ASTACDOLUS HYALACRULUS LOEBLICH + TAPPAN 1953 | R | | | |
| 4 | ASTRONION STELLATUM CUSHMAN + EDWARDS 1937 | 1.5 | | | |
| 5 | ANGULODERINA FLUENS TODD 1947 | 1.8 | 1.0 | 0.9 | |
| 6 | BOLIVINA SP. | R | | | |
| 7 | BOLIVINA PSEUDOPUNCTATA HOGLUND 1947 | 0.4 | R | | |
| 8 | BULIMINA SP. | R | | | |
| 9 | BULIMINA EXILIS BRADY 1884 | R | | R | |
| 10 | BUCCELLA INUSITATA ANDERSEN 1952 | 1.8 | 1.7 | 7.9 | |
| 11 | BUCCELLA FRIGIDA (CUSHMAN) 1922 | 0.2 | R | 0.2 | |
| 12 | CASSIDULINA ISLANDICA NORVANG 1945 | 12.5 | 6.7 | 7.1 | |
| 13 | CASSIDULINA TERETIS TAPPAN 1951 | 2.7 | 1.1 | 13.4 | |
| 14 | CASSIDULINA NORCROSSI CUSHMAN 1933 | R | | 0.1 | |
| 15 | CIBICIDES LOBATULUS (WALKER + JACOB) 1798 | 60.7 | 35.4 | 50.8 | |
| 16 | CIBICIDES LOBATULUS AFF. C. REFULGENS | R | | | |
| 17 | CIBICIDES SP. | R | | | |
| 18 | CIBICIDES PSEUDOUNGERIANUS (BRADY) 1884 | R | | | |
| 19 | DENTALINA BAGGI GALLOWAY + WISSLER 1927 | R | | | |
| 20 | DENTALINA ITTAI LOEBLICH + TAPPAN 1953 | R | | | |
| 21 | DISCORBIS SP. CF. D. SQUAMATA | 0.1 | | | |
| 22 | DISCORBIS SP. | 0.1 | | | |
| 24 | DISCORBIDAE IMMATURE | 0.1 | | | |
| 25 | DISCORBIS SP. CF. TROCHAMMINA OCHRACEA | 0.2 | R | | |
| 26 | ELPHIDIUM BARTLETTI CUSHMAN 1933 | R | 1.8 | 4.3 | |
| 27 | ELPHIDIUM SP. CF. E. BARTLETTI | 0.2 | | | |
| 28 | ELPHIDIUM SP. | R | R | | |
| 29 | ELPHIDIUM CLAVATUM CUSHMAN 1930 | 9.4 | 46.1 | 5.7 | |
| 30 | ELPHIDIUM FRIGIDUM CUSHMAN 1933 | R | | | |
| 31 | ELPHIDIUM SUBARCTICUM CUSHMAN 1944 | 0.7 | 1.0 | 0.2 | |
| 32 | ELPHIDIUM INCERTUM CUSHMAN 1930 | 0.2 | | | |
| 33 | ESOSYRINX CURTUS (CUSHMAN + OZAWA) 1930 | 0.1 | | | |
| 34 | EGGERELLA SCABRA (WILLIAMSON) 1858 | 0.5 | 0.1 | | |
| 35 | ELPHIDIELLA ARCTICA (PARKER + JONES) 1864 | 0.7 | 2.1 | 3.3 | |
| 36 | EPISTOMINELLA NARAENSIS (KUWANO) 1950 | 0.3 | | | |
| 37 | FISSURINA MARGINATA (MONTAGU) 1803 | 0.5 | R | 0.9 | |
| 38 | FISSURINA SERRATA (SCHLUMBERGER) 1894 | R | R | | |
| 39 | FISSURINA SEMIMARGINATA (REUSS) 1870 | R | R | | |
| 40 | FISSURINA CUCURBITASEMA LOEBLICH + TAPPAN 1953 | R | R | | |
| 41 | GLANDULINA LAEVIGATA (ORBIGNY) 1826 | R | | | |

BENTHIC FORAMINIFERAL ASSEMBLAGE 3 FOR M=7 (CONTINUED)

| NO. | SPECIES NAME | STATION NUMBERS | | | |
|-----|--|-----------------|-----|-----|-----|
| | | DEPTH IN METERS | 2 | 10 | 31 |
| 42 | GLOBOBULIMINA AURICULATA (BAILEY) 1851 | | R | | |
| 43 | GLABRATELLA WRIGHTII (BRADY) 1881 | | 0.1 | | |
| 44 | GLOBULINA SP. CF. G. GLACIALIS | | R | | |
| 45 | GUTTULINA LACTEA (WALKER + JACOB) 1798 | | R | | |
| 46 | GUTTULINA EARLANDI CUSHMAN + OZAWA 1930 | | R | | |
| 47 | GUTTULINA SP. | | R | | |
| 48 | LAGENA APIOPLEURA LOEBLICH + TAPPAN 1953 | | 0.1 | R | 0.1 |
| 49 | LAGENA FLATULENTA LOEBLICH + TAPPAN 1953 | | R | | 0.2 |
| 50 | LAGENA LAEVIS (MONTAGU) 1803 | | R | | |
| 51 | LAGENA MERIDIONALIS WIESNER 1931 | | R | | |
| 52 | LAGENA MOLLIS CUSHMAN 1944 | | R | | |
| 53 | LAGENA SEMILINEATA WRIGHT 1886 | | R | | 0.1 |
| 54 | LARYNGOSIGMA HYALASCIDIA LOEBLICH + TAPPAN 1953 | | R | | 0.1 |
| 55 | LAMARCKINA HALIOTIDEA (HERON-ALLEN + EARLAND) 1911 | | R | | |
| 56 | NONION SP. | | R | R | |
| 57 | NONION SCAPHUM (FICHEL + MOLL) 1798 | | 0.3 | | |
| 58 | NONION SP. CF. N. GRATELOUPI | | 0.1 | | |
| 59 | NONION(ELLA) LABRADORICA | | 0.7 | | 2.2 |
| 60 | NONION LABRADORICUM (DAWSON) 1860 | | 0.9 | | 0.2 |
| 62 | NONIONELLA AURICULA HERON-ALLEN + EARLAND 1930 | | R | | |
| 63 | ODOLINA COSTATA LOEBLICH + TAPPAN 1953 | | R | | 0.5 |
| 64 | ODOLINA MELO ORBIGNY 1839 | | R | R | 0.1 |
| 65 | ODOLINA CAUDIGERA (WIESNER) 1931 | | R | | 0.2 |
| 66 | PARAFISSURINA FUSULIFORMIS LOEBLICH + TAPPAN 1953 | | 0.1 | | |
| 67 | PATELLINA CORRUGATA WILLIAMSON 1858 | | 0.3 | | |
| 68 | POLYMORPHINA SP. NOV. AFF. P. FLINTII | | R | | |
| 69 | PROTELEPHIDIUM ORBICULARE (BRADY) 1881 | | 1.0 | 1.6 | |
| 70 | QUINQUELOCULINA SP. CF. Q. ARCTICA | | R | | |
| 71 | QUINQUELOCULINA ARCTICA CUSHMAN 1933 | | R | | |
| 72 | QUINQUELOCULINA AGGLUTINATA CUSHMAN 1917 | | R | | |
| 73 | QUINQUELOCULINA SP. | | R | | |
| 74 | QUINQUELOCULINA NITIDA NORVANG 1945 | | R | | |
| 75 | QUINQUELOCULINA SP. CF. Q. NORVANGI | | R | | |
| 76 | QUINQUELOCULINA SP. CF. Q. AKNERIANA | | 0.1 | | |
| 77 | QUINQUELOCULINA STALKERI LOEBLICH + TAPPAN 1953 | | 0.1 | | |
| 78 | RECURVIDES TURBINATUS (BRADY) 1881 | | R | | |
| 79 | REOPHAX CURTUS CUSHMAN 1920 | | R | | |
| 80 | REOPHAX SCORPIURUS MONTFORT 1808 | | R | | |
| 81 | ROBERTINOIDES CHARLOTTENSIS (CUSHMAN) 1925 | | R | | |
| 82 | REOPHAX SCOTTII CHASTER 1890-91 | | R | R | |

BENTHIC FORAMINIFERAL ASSEMBLAGE 3 FOR M=7 (CONTINUED)

| NO. | SPECIES NAME | STATION NUMBERS | | | |
|-----|--|-----------------|-----|-----|-----|
| | | DEPTH IN METERS | 2 | 10 | 31 |
| | | | 73 | 74 | 56 |
| 83 | SACCAMMINA SP. | | R | | |
| 84 | SPIROPLECTAMMINA BIFORMIS (PARKER + JONES) 1865 | | R | R | |
| 85 | REOPHAX ARCTICA BRADY 1881 | | 0.1 | | |
| 86 | TRILOCULINA SP. CF. T. ANGULARIS | | R | | |
| 87 | TRILOCULINA TRIHEDRA LOEBLICH + TAPPAN 1953 | | 0.3 | R | |
| 88 | TEXTULARIA TORQUATA PARKER 1952 | | 0.1 | | |
| 89 | TROCHAMMINA OCHRACEA (WILLIAMSON) 1858 | | 0.1 | | |
| 90 | TROCHAMMINA NANA (BRADY) 1881 | | 0.1 | | |
| 91 | PROTEONINA ATLANTICA CUSHMAN 1944 | | R | R | |
| 94 | CALCAREOUS INDETERMINATE | | 0.1 | | |
| 95 | ARENACEOUS INDETERMINATE | | 0.2 | | |
| 101 | EGGERELLA ADVENA (CUSHMAN) 1922 | | | 0.1 | |
| 106 | NONIONELLA SP. CF. N. AURICULA | | R | | |
| 108 | ELPHIDIIDAE IMMATURE | | | | 0.5 |
| 116 | TROCHAMMINA SP. | | | R | |
| 136 | GLABRATHELLA SP. CF. DISCORBIS CHASTERI | | | 0.1 | |
| 175 | NONION SP. CF. N. SCAPHUM | | | | 0.1 |
| 183 | DISCORBIS SP. CF. D. OBTUSA | | | R | |
| 191 | ASTRONONION SP. CF. A. STELLATUM | | | R | 0.5 |
| 198 | DISCORBIS SP. CF. D. CHASTERI | | 0.1 | 0.1 | |
| 203 | GUTTULINA LACTEA AFF. G. PACIFICA | | | R | |
| 213 | CONORBINA SP. | | | R | |
| 214 | ELPHIDIELLA SP. | | | R | |
| 215 | EPISTOMINELLA SP. CF. E. NARAENSIS | | | 0.7 | |
| 216 | GUTTULINA LACTEA AFF. G. AUSTRIACA | | | R | 0.1 |
| 217 | HIPPOCREPINA SP. CF. H. INDIVISOR | | | R | |
| 218 | OOLINA STRIATOPUNCTATA (PARKER + JONES) 1865 | | | R | |
| 219 | PLANORBULINA MEDITERRANENSIS ORBIGNY 1826 | | | R | |
| 220 | PROTEONINA SP. | | | R | 0.1 |
| 221 | QUINQUELOCULINA AKNERIANA ORBIGNY 1846 | | | R | |
| 222 | SCUTULORIS SP. NOV. | | | R | |
| 223 | THOLOSINA BULLA (BRADY) 1881 | | | R | |
| 224 | TURRISPIRILLINA ARCTICA (CUSHMAN) 1933 | | | R | |
| 240 | REOPHAX SP. | | | R | |
| 278 | OOLINA LINEATA (WILLIAMSON) 1848 | | | | 0.2 |
| 297 | OOLINA LINEATO-PUNCTATA (HERON-ALLEN + EARLAND) 1922 | | | | 0.1 |
| 308 | ELPHIDIUM SP. CF. E. EXCAVATUM | | | | R |
| 309 | OOLINA SQUAMOSA (MONTAGU) 1893 | | | | 0.1 |

THE FOLLOWING 31 SPECIES OCCUR IN BENTHIC FORAMINIFERAL ASSEMBLAGE 4 OF THE FACTOR ANALYSIS IN QO-MODE FOR M=7

| NO. | SPECIES NAME | STATION NUMBERS | | |
|-----|---|-----------------|------|------|
| | | DEPTH IN METERS | 25 | 26 |
| 1 | ADERCOTRYMA GLOMERATA (BRADY) 1878 | | R | 4.3 |
| 82 | REOPHAX SCOTTII CHASTER 1890-91 | | | 13.5 |
| 84 | SPIROPLECTAMMINA BIFORMIS (PARKER + JONES) 1865 | | 27.9 | 25.4 |
| 85 | REOPHAX ARCTICA BRADY 1881 | | | R |
| 88 | TEXTULARIA TORQUATA PARKER 1952 | | | 6.8 |
| 89 | TROCHAMMINA OCHRACEA (WILLIAMSON) 1858 | | 8.8 | |
| 91 | PROTEONINA ATLANTICA CUSHMAN 1944 | | | 0.2 |
| 96 | ALVEOLOPHRAGMIUM CRASSIMARGO (NORMAN) 1892 | | 0.1 | 0.2 |
| 101 | EGGERELLA ADVENA (CUSHMAN) 1922 | 39.9 | 53.7 | 24.0 |
| 109 | PSAMMOSPHAERA SP. | 0.3 | 0.1 | 0.1 |
| 115 | TROCHAMMINA SP. CF. T. OCHRACEA | 3.1 | | 10.2 |
| 116 | TROCHAMMINA SP. | | | 1.7 |
| 118 | WEBBINELLA SP. | 0.1 | 2.9 | |
| 245 | HYPERAMMINA SP. | 0.2 | | |
| 260 | AMMOTIUM CASSIS (PARKER) 1870 | 40.4 | | R |
| 275 | TROCHAMMINELLA ATLANTICA PARKER 1952 | | | R |
| 283 | MILIAMMINA FUSCA (BRADY) 1870 | 16.0 | 0.4 | |
| 284 | PROTEONINA SP. CF. P. ATLANTICA | | R | |
| 285 | AMMOTIUM SP. CF. A. CASSIS | | R | |
| 286 | PROTEONINA SP. CF. P. DIFFLUGIFORMIS | | R | |
| 287 | PROTEONINA SP. CF. P. AMPULLACEA | | R | 1.7 |
| 288 | WEBBINELLA SP. CF. W. HEMISPHAERICA | | 0.1 | 10.6 |
| 289 | AMMODISCUS SP. CF. A. PLANUS | | 2.9 | |
| 290 | ROTALIDS | | 2.9 | |
| 291 | HYPERAMMINA FRAGMENTS | | 0.1 | |
| 292 | MILIAMMINA SP. CF. M. FUSCA | | | 0.9 |
| 293 | PROTEONINA FUSIFORMIS | | | 0.2 |
| 294 | AMMOSCALARIA SP. CF. A. TENUIMARGO | | | R |
| 315 | TEXTULARIA SP. CF. T. EARLANDI | | | 2.5 |
| 316 | HYPERAMMINA SP. A | | | 0.5 |
| 317 | HYPERAMMINA SP. B | | | 0.3 |

THE FOLLOWING 115 SPECIES OCCUR IN BENTHIC FORAMINIFERAL ASSEMBLAGE 5 OF THE FACTOR ANALYSIS IN OO-MODE FOR M=7

| NO. | SPECIES NAME | STATION NUMBERS | | | | |
|-----|---|-----------------|------|------|------|-----|
| | | 4 | 5 | 6 | 7 | 40 |
| | DEPTH IN METERS | 218 | 457 | 255 | 430 | 398 |
| 1 | ADERCOTRYMA GLOMERATA (BRADY) 1878 | | | | | 1.2 |
| 2 | ALVEOLOPHRAGMIUM JEFFREYSI (WILLIAMSON) 1858 | | 0.1 | | | 7.4 |
| 5 | ANGULOGERINA FLUENS TODD 1947 | | | | 0.2 | |
| 6 | BOLIVINA SP. | | | | | 1.2 |
| 7 | BOLIVINA PSEUDOPUNCTATA HÖGLUND 1947 | 0.3 | 0.2 | | 0.3 | 3.7 |
| 9 | BULIMINA EXILIS BRADY 1884 | 14.9 | 27.9 | 18.3 | 17.3 | 4.9 |
| 10 | BUCCELLA INUSITATA ANDERSEN 1952 | 1.7 | 5.8 | 3.2 | 1.2 | 2.5 |
| 11 | BUCCELLA FRIGIDA (CUSHMAN) 1922 | 1.2 | | | 2.0 | |
| 12 | CASSIDULINA ISLANDICA NORVANG 1945 | 14.9 | | | 1.7 | 3.7 |
| 13 | CASSIDULINA TERETIS TAPPAN 1951 | | | | 0.1 | 3.7 |
| 14 | CASSIDULINA NORCROSSI CUSHMAN 1933 | 2.1 | 0.7 | 49.8 | 2.3 | |
| 16 | CIBICIDES LOBATULUS AFF. C. REFULGENS | | 0.3 | | | |
| 18 | CIBICIDES PSEUDOUNGERIANUS (BRADY) 1884 | 0.3 | | | 0.5 | |
| 20 | DENTALINA ITTAI LOEBLICH + TAPPAN 1953 | 0.1 | | | | |
| 21 | DISCORBIS SP. CF. D. SQUAMATA | 1.4 | | | | |
| 25 | DISCORBIS SP. CF. TROCHAMMINA OCHRACEA | R | | | | |
| 26 | ELPHIDIUM BARTLETTI CUSHMAN 1933 | 0.9 | | | R | |
| 27 | ELPHIDIUM SP. CF. E. BARTLETTI | | 3.5 | | | 1.2 |
| 29 | ELPHIDIUM CLAVATUM CUSHMAN 1930 | 3.3 | 1.8 | | 7.5 | 8.6 |
| 32 | ELPHIDIUM INCERTUM CUSHMAN 1930 | 1.4 | 1.6 | | 10.4 | |
| 36 | EPISTOMINELLA NARAENSIS (KUWANO) 1950 | 0.3 | | | | |
| 37 | FISSURINA MARGINATA (MONTAGU) 1809 | 1.7 | | | | |
| 38 | FISSURINA SERRATA (SCHLUMBERGER) 1894 | R | | | | |
| 39 | FISSURINA SEMIMARGINATA (REUSS) 1870 | 0.1 | | 2.6 | 0.1 | |
| 40 | FISSURINA CUCURBITASEMA LOEBLICH + TAPPAN 1953 | R | | | 0.2 | |
| 41 | GLANDULINA LAEVIGATA (ORBIGNY) 1826 | 0.1 | 0.4 | | 0.2 | |
| 42 | GLOBOBULIMINA AURICULATA (BAILEY) 1851 | | | 0.1 | 4.3 | 7.4 |
| 48 | LAGENA APIOPLEURA LOEBLICH + TAPPAN 1953 | 0.1 | | | | |
| 50 | LAGENA LAEVIS (MONTAGU) 1803 | 0.1 | 0.2 | | 0.5 | |
| 51 | LAGENA MERIDIONALIS WIESNER 1931 | 0.1 | | | | |
| 52 | LAGENA MOLLIS CUSHMAN 1944 | R | | | 0.6 | |
| 56 | NONION SP. | 0.1 | | | | 1.2 |
| 58 | NONION SP. CF. N. GRATELOUPI | | | | R | |
| 59 | NONION(ELLA) LABRADORICA | 5.2 | 0.4 | 1.4 | 4.1 | |
| 60 | NONION LABRADORICUM (DAWSON) 1860 | 0.7 | 3.8 | 3.2 | 6.6 | 3.7 |
| 62 | NONIONELLA AURICULA HERON-ALLEN + EARLAND 1930 | R | | | | |
| 66 | PARAFISSURINA FUSULIFORMIS LOEBLICH + TAPPAN 1953 | R | 0.2 | | | |
| 67 | PATELLINA CORRUGATA WILLIAMSON 1858 | 0.4 | | | | |
| 69 | PROTELPHIDIUM ORBICULARE (BRADY) 1881 | 0.1 | | | | |

BENTHIC FORAMINIFERAL ASSEMBLAGE 5 FOR M=7 (CONTINUED)

| NO. | SPECIES NAME | STATION NUMBERS | | | | |
|-----|---|-----------------|------|-----|------|-----|
| | | 4 | 5 | 6 | 7 | 40 |
| | | DEPTH IN METERS | | | | |
| | | 218 | 457 | 255 | 430 | 398 |
| 80 | REOPHAX SCORPIURUS MONTFORT 1808 | | | | | 1.2 |
| 89 | TROCHAMMINA OCHRACEA (WILLIAMSON) 1858 | R | | | | |
| 91 | PROTEONINA ATLANTICA CUSHMAN 1944 | | | | | 3.7 |
| 96 | ALVEOLOPHRAGMIUM CRASSIMARGO (NORMAN) 1892 | | | | R | |
| 97 | AMMODISCUS SP. | | | | | 1.2 |
| 99 | CIBICIDES SP. CF. C. LOBATULUS | 0.3 | | | | 1.2 |
| 106 | NONIONELLA SP. CF. N. AURICULA | | | | 1.1 | |
| 108 | ELPHIDIDAE IMMATURE | 1.2 | 1.3 | | | |
| 116 | TROCHAMMINA SP. | | | | 0.1 | 2.5 |
| 119 | ASTACOLUS SP. CF. A. HYALACRULUS | 0.3 | | | | |
| 120 | ASTRONONION SP. | 0.6 | | | | |
| 121 | BOLIVINA SUBAENARIENSIS CUSHMAN 1922 | 1.3 | 22.4 | 7.9 | 3.7 | |
| 122 | BOLIVINA SUBSPINESCENS CUSHMAN 1922 | 1.2 | 0.1 | | | |
| 123 | BULIMINA ACULEATA ORBIGNY 1826 | 6.5 | 1.9 | 5.3 | 5.7 | |
| 124 | BULIMINA MARGINATA ORBIGNY 1826 | 2.8 | 12.3 | 0.1 | 0.8 | 1.2 |
| 125 | CASSIDULINA LAEVIGATA AFF. C. CARINATA | 1.3 | | | | |
| 126 | FISSURINA SP. CF. F. SEMIMARGINATA | | | | | 1.2 |
| 127 | TRITAXIS CONICA (PARKER + JONES) 1865 | | | | | 1.2 |
| 128 | CIBICIDES SP. IMMATURE | 3.9 | | | | |
| 129 | DISCORBIS CHASTERI (HERON-ALLEN + FARLAND) 1913 | R | | | | |
| 130 | DENTALINA FROBISHERENSIS LOEBLICH + TAPPAN 1953 | 0.1 | | | | |
| 131 | LENTICULINA SP. CF. L. GIBRA | | | | 0.1 | |
| 132 | DISCORBIS OBTUSA CUSHMAN 1931 | R | | | | |
| 133 | EPONIDES PUSILLUS PARR 1950 | 1.4 | | | | |
| 134 | FISSURINA SP. | 0.3 | | | | |
| 135 | GLOBOBULIMINA SP. CF. G. TURGIDA | 0.3 | | | 1.0 | |
| 136 | GLABRATHELLA SP. CF. DISCORBIS CHASTERI | 0.1 | | | | |
| 137 | GYROIDINA SP. CF. G. QUINQUELOBA | 0.1 | | | | |
| 138 | LAGENA GRACILLIMA (SEGUENZA) 1862 | R | 0.1 | | | |
| 139 | LAGENA GRACILIS WILLIAMSON 1848 | R | 0.2 | | | |
| 140 | LAGENA HISPIDA REUSS 1863 | R | | | | |
| 141 | NONIONELLA TURGIDA (WILLIAMSON) 1858 | R | | | | |
| 142 | OSANGULARIA SP. | R | | | | |
| 143 | OOLINA HEXAGONA (WILLIAMSON) 1848 | 0.1 | | | | |
| 144 | PARAFISSURINA TECTULOSTOMA LOEBLICH + TAPPAN 1953 | 0.1 | | | | 1.2 |
| 145 | PARAFISSURINA FOLLICULA LOEBLICH + TAPPAN 1953 | 0.1 | | | | |
| 146 | PNINAELLA PULCHELLA PARKER 1952 | R | | | | |
| 147 | PULLENIA QUINQUELOBA (REUSS) 1851 | 22.3 | | 0.4 | 11.7 | 8.6 |
| 148 | SIPHOGENERINA ANNULATA BRADY 1884 | 0.4 | | | | |

BENTHIC FORAMINIFERAL ASSEMBLAGE 5 FOR M=7 (CONTINUED)

| NO. | SPECIES NAME | STATION NUMBERS | | | | |
|-----|--|-----------------|-----|-----|------|-----|
| | | 4 | 5 | 6 | 7 | 40 |
| | DEPTH IN METERS | 218 | 457 | 255 | 430 | 398 |
| 149 | VIRGULINA COMPLANATA EGGER 1893 | 1.1 | 2.0 | 7.4 | 12.0 | 8.6 |
| 150 | VIRGULINA SP. CF. V. FUSIFORMIS | 0.3 | | | | |
| 152 | ASTACOLUS SP. | | 0.2 | | | |
| 153 | CIBICIDES SP. CF. C. PSEUDOUNGERIANUS | | 0.1 | | | |
| 154 | ELPHIDIUM INCERTUM AFF. E. CLAVATUM | | 0.1 | | | 2.5 |
| 155 | ELPHIDIUM SP. CF. E. BARTLETTI AFF. E. CLAVATUM | | 0.9 | | | |
| 156 | FISSURINA SP. CF. F. MARGINATA | | 0.4 | | | |
| 157 | FISSURINA LUCIDA (WILLIAMSON) 1848 | | 0.2 | | | |
| 158 | GLOBOBULIMINA SP. | | 0.4 | | | |
| 159 | GLOBOBULIMINA TURGIDA (BAILEY) 1851 | | 0.1 | | | |
| 160 | LAGENA MOLLIS AFF. L. DISTOMA | | 0.4 | 0.1 | | |
| 161 | LARYNGOSIGMA SP. | | 0.2 | | | |
| 162 | OOLINA SP. CF. O. HEXAGONA | | 0.2 | | | |
| 163 | PULLENIA SP. CF. P. QUINQUELOBA | | 9.0 | | | |
| 164 | PARAFISSURINA SP. | | 0.2 | | | |
| 165 | RECTOGLANDULINA SP. CF. R. OCCIDENTALIS | | 0.5 | | | |
| 166 | ANGULGERINA ANGULOSA (WILLIAMSON) 1858 | | | 0.1 | | |
| 174 | LAGENA SP. | | | | | 1.2 |
| 184 | ALVEOLOPHRAGMIUM SUBGLOBOSUM (SARS) 1871 | | | | | 1.2 |
| 185 | RECTOGLANDULINA SP. CF. GLANDULINA LAEVIGATA | | | | 0.1 | |
| 186 | VAGINULINA SPINIGERA BRADY 1881 | | | | R | |
| 187 | BULIMINELLA CONVOLUTA (WILLIAMSON) 1858 | | | | R | |
| 188 | CIBICIDES SP. CF. C. REFULGENS | | | | 0.4 | |
| 189 | LAGENA SP. CF. L. APIOPLEURA | | | | 0.2 | |
| 190 | LAGENA SP. CF. L. STRIATA | | | | 0.1 | |
| 191 | ASTRONONION SP. CF. A. STELLATUM | | | | 0.2 | |
| 192 | GYROIDINA UMBONATA (SILVESTRI) 1898 | | | | 0.3 | |
| 193 | LAGENA SP. CF. L. SETIGERA | | | | 0.1 | |
| 194 | NONION SP. CF. N. ZAANDAMAE | | | | 1.8 | |
| 198 | DISCORBIS SP. CF. D. CHASTERI | 1.7 | | | | |
| 200 | LEPTODERMELLA SP. | | | | | 1.2 |
| 208 | CYCLAMMINA CANCELLATA BRADY 1879 | | | | | 1.2 |
| 261 | TROCHAMMINA SP. CF. T. ATLANTICA | | | | | 4.9 |
| 268 | OOLINA SP. CF. O. LINEATA | | | | | 1.2 |
| 279 | TROCHAMMINA QUADRILLOBA HOGGLUND 1948 | | | | | 1.2 |
| 297 | OOLINA LINEATO-PUNCTATA (HERON-ALLEN + EARLAND) 1922 | | | | | 1.2 |
| 310 | PROTEONINA DIFFLUGIFORMIS (BRADY) 1879 | | | | | 1.2 |

THE FOLLOWING 75 SPECIES OCCUR IN BENTHIC FORAMINIFERAL ASSEMBLAGE 6 OF THE FACTOR ANALYSIS IN QQ-MODE FOR M=7

| NO. | SPECIES NAME | STATION NUMBERS | 3 | 35 | 37 | 38 | 39 |
|-----|---|-----------------|------|------|------|------|------|
| | | DEPTH IN METERS | 135 | 142 | 108 | 275 | 191 |
| 1 | ADERCOTRYMA GLOMERATA (BRADY) 1878 | | 9.4 | 42.4 | 33.5 | 15.6 | 16.7 |
| 2 | ALVEOLOPHRAGMIUM JEFFREYSI (WILLIAMSON) 1858 | | 1.6 | 14.8 | 0.1 | 21.0 | 5.0 |
| 4 | ASTRONONION STELLATUM CUSHMAN + EDWARDS 1937 | | 0.2 | | | | |
| 5 | ANGULOGERINA FLUENS TODD 1947 | | 2.4 | | | 8.9 | |
| 7 | BOLIVINA PSEUDOPUNCTATA HOGLUND 1947 | | 4.2 | | | | |
| 9 | BULIMINA EXILIS BRADY 1884 | | | | | 0.8 | |
| 10 | BUCCELLA INUSITATA ANDERSEN 1952 | | 7.7 | | | 3.0 | |
| 11 | BUCCELLA FRIGIDA (CUSHMAN) 1922 | | 3.4 | | | | |
| 12 | CASSIDULINA ISLANDICA NORVANG 1945 | | 2.8 | | | | |
| 13 | CASSIDULINA TERETIS TAPPAN 1951 | | 14.3 | | | | |
| 14 | CASSIDULINA NORCROSSI CUSHMAN 1933 | | 0.3 | | | | |
| 26 | ELPHIDIUM BARTLETTI CUSHMAN 1933 | | R | | | | |
| 32 | ELPHIDIUM INCERTUM CUSHMAN 1930 | | 1.0 | | | | |
| 34 | EGGERELLA SCABRA (WILLIAMSON) 1858 | | 8.1 | | | | |
| 37 | FISSURINA MARGINATA (MONTAGU) 1803 | | 0.1 | | | | |
| 50 | LAGENA LAEVIS (MONTAGU) 1803 | | | | 0.8 | | |
| 52 | LAGENA MOLLIS CUSHMAN 1944 | | R | | | | |
| 56 | NONION SP. | | 0.3 | | | | |
| 59 | NONION(ELLA) LABRADORICA | | 0.4 | | | | |
| 60 | NONION LABRADORICUM (DAWSON) 1860 | | 0.5 | | | | |
| 65 | ODLINA CAUDIGERA (WIESNER) 1931 | | 0.2 | | | | |
| 73 | QUINQUELOCULINA SP. | | R | | | | |
| 78 | RECURVOIDES TURBINATUS (BRADY) 1881 | | 0.3 | | | | 20.0 |
| 79 | REOPHAX CURTUS CUSHMAN 1920 | | R | 0.7 | 0.1 | | |
| 80 | REOPHAX SCORPIURUS MONTFORT 1808 | | | | 0.8 | | 1.7 |
| 82 | REOPHAX SCOTTII CHASTER 1890-91 | | | | 5.8 | 4.4 | |
| 83 | SACCAMMINA SP. | | | 0.7 | | 4.4 | |
| 84 | SPIROPLECTAMMINA BIFORMIS (PARKER + JONES) 1865 | | 12.0 | | 26.4 | | |
| 85 | REOPHAX ARCTICA BRADY 1881 | | 17.1 | | | | |
| 88 | TEXTULARIA TORQUATA PARKER 1952 | | 3.0 | | 2.5 | | |
| 91 | PROTEONINA ATLANTICA CUSHMAN 1944 | | | 1.8 | 18.3 | 1.5 | 20.8 |
| 95 | ARENACEOUS INDETERMINATE | | | 1.8 | 0.1 | | |
| 96 | ALVEOLOPHRAGMIUM CRASSIMARGO (NORMAN) 1892 | | 0.3 | | 0.1 | | |
| 97 | AMMODISCUS SP. | | 0.1 | 0.4 | | | |
| 98 | CAUSIA SP. | | R | | | | |
| 99 | CIBICIDES SP. CF. C. LOBATULUS | | 1.4 | | | | |
| 100 | ELPHIDIUM SP. CF. E. CLAVATUM | | R | | | | |
| 101 | EGGFRELLA ADVENA (CUSHMAN) 1922 | | 0.3 | | | | |

BENTHIC FORAMINIFERAL ASSEMBLAGE 6 FOR M=7 (CONTINUED)

| NO. | SPECIES NAME | STATION NUMBERS | | | | | |
|-----|--|-----------------|-----|------|-----|------|------|
| | | 3 | 35 | 37 | 38 | 39 | |
| | | DEPTH IN METERS | 135 | 142 | 108 | 275 | 191 |
| 102 | GLOMOSPIRA SP. | | 0.2 | | | | |
| 103 | HYPERAMMINA SUBNODOSA BRADY 1884 | | 0.3 | | | | |
| 104 | MARSIPELLA ELONGATA (RHUMBLER) 1913 | | R | | | | |
| 105 | NONION POMPILIOIDES (FICHTEL + MOLL) 1798 | | R | | | | |
| 106 | NONIONELLA SP. CF. N. AURICULA | | 1.0 | | | 8.9 | |
| 107 | NONIONIDAE IMMATURE | | 0.4 | | | | |
| 108 | ELPHIDIDAE IMMATURE | | 0.1 | | | | |
| 109 | PSAMMOSPHAERA SP. | | 0.6 | | 0.2 | | |
| 110 | PYRGO SP. CF. P. ELONGATA | | R | | | | |
| 111 | ROBERTINA ARCTICA ORBIGNY 1846 | | R | | | | |
| 112 | REOPHAX SUBFUSIFORMIS EARLAND 1933 | | 0.3 | | | | |
| 113 | ROTALIA SP. | | 1.4 | | | | |
| 114 | SPIRILINA SP. | | 0.1 | | | | |
| 115 | TROCHAMMINA SP. CF. T. OCHRACEA | | 0.9 | | | | |
| 116 | TROCHAMMINA SP. | | 0.3 | 15.5 | | | |
| 117 | VIRGULINA SP. CF. V. BRADYI | | 0.6 | | | | |
| 118 | WEBBINELLA SP. | | 2.2 | 14.1 | 2.5 | | |
| 124 | BULIMINA MARGINATA ORBIGNY 1826 | | | | | 6.7 | |
| 127 | TRITAXIS CONICA (PARKER + JONES) 1865 | | | | | 1.5 | |
| 138 | LAGENA GRACILLIMA (SEGUENZA) 1862 | | | | 0.8 | | |
| 180 | TROCHAMMINA SP. CF. T. NANA | | | | | | 10.2 |
| 184 | ALVEOLOPHRAGMIUM SUBGLOBOSUM (SARS) 1871 | | | | | | 23.9 |
| 240 | REOPHAX SP. | | | 1.1 | | | |
| 245 | HYPERAMMINA SP. | | | | | | 1.7 |
| 266 | REOPHAX PILULIFERA BRADY 1884 | | | | | 0.8 | |
| 270 | ALVEOLOPHRAGMIUM SP. | | | | 2.1 | | |
| 275 | TROCHAMMINELLA ATLANTICA PARKER 1952 | | | | | 18.6 | |
| 276 | SILICOSIGMOILINA GROENLANDICA (CUSHMAN) 1933 | | | 0.7 | 0.8 | | |
| 282 | TROCHAMMINA SP. CF. T. SQUAMATA | | | | 0.8 | | |
| 289 | AMMODISCUS SP. CF. A. PLANUS | | | | 0.8 | 1.5 | |
| 298 | REOPHAX SP. CF. R. CURTUS | | | | 0.3 | | |
| 306 | BUCCELLA SP. CF. B. FRIGIDA | | | | | 1.5 | |
| 310 | PROTEONINA DIFFLUGIFORMIS (BRADY) 1879 | | | 3.9 | | 0.8 | |
| 311 | HYPERAMMINA SP. CF. H. SUBNODOSA | | | 2.1 | | | |
| 316 | HYPERAMMINA SP. A | | | | 0.5 | | |
| 317 | HYPERAMMINA SP. B | | | | 0.3 | | |
| 318 | DENDROPHRYA SP. | | | | 0.1 | | |

THE FOLLOWING 106 SPECIES OCCUR IN BENTHIC FORAMINIFERAL ASSEMBLAGE 7 OF THE FACTOR ANALYSIS IN QQ-MODE FOR M=7

| NO. | SPECIES NAME | STATION NUMBERS | | | | |
|-----------------|--|-----------------|------|------|------|------|
| | | 9 | 11 | 12 | 13 | 14 |
| DEPTH IN METERS | | 136 | 64 | 65 | 58 | 165 |
| 1 | ADERCOTRYMA GLOMERATA (BRADY) 1878 | 2.6 | 2.7 | | | 0.3 |
| 2 | ALVEOLOPHRAGMIUM JEFFREYSI (WILLIAMSON) 1858 | 1.2 | 1.7 | | | |
| 4 | ASTRONONION STELLATUM CUSHMAN + EDWARDS 1937 | | | | | 2.1 |
| 5 | ANGULOGERINA FLUENS TODD 1947 | 0.4 | 2.0 | | 1.1 | |
| 6 | BOLIVINA SP. | | | | | R |
| 7 | BOLIVINA PSEUDOPUNCTATA HOGLUND 1947 | | | | | R |
| 10 | BUCCELLA INUSITATA ANDERSEN 1952 | 1.0 | 0.8 | 3.9 | 2.0 | R |
| 11 | BUCCELLA FRIGIDA (CUSHMAN) 1922 | | | 2.0 | | 0.3 |
| 12 | CASSIDULINA ISLANDICA NORVANG 1945 | 21.1 | 51.0 | 48.4 | 38.4 | 6.9 |
| 13 | CASSIDULINA TERETIS TAPPAN 1951 | 10.5 | 3.1 | | 0.3 | 0.1 |
| 14 | CASSIDULINA NORCROSSI CUSHMAN 1933 | 1.8 | | | | 0.3 |
| 15 | CIBICIDES LOBATULUS (WALKER + JACOB) 1798 | 6.5 | 21.4 | 9.0 | 18.6 | 1.1 |
| 16 | CIBICIDES LOBATULUS AFF. C. REFULGENS | 10.6 | 1.5 | | 1.4 | 4.9 |
| 17 | CIBICIDES SP. | 0.6 | 2.2 | 1.1 | | 11.8 |
| 18 | CIBICIDES PSEUDOUNGERIANUS (BRADY) 1884 | | | | | R |
| 21 | DISCORBIS SP. CF. D. SQUAMATA | | | 0.6 | | |
| 22 | DISCORBIS SP. | | | | | R |
| 27 | ELPHIDIUM SP. CF. E. BARTLETTI | | | | | R |
| 29 | ELPHIDIUM CLAVATUM CUSHMAN 1930 | 4.2 | 2.4 | 12.0 | 15.6 | R |
| 30 | ELPHIDIUM FRIGIDUM CUSHMAN 1933 | | | | | R |
| 31 | ELPHIDIUM SUBARCTICUM CUSHMAN 1944 | 0.1 | | 2.9 | | |
| 32 | ELPHIDIUM INCERTUM CUSHMAN 1930 | 2.0 | | | 0.3 | |
| 33 | ESOSYRINX CURTUS (CUSHMAN + OZAWA) 1930 | | | | | R |
| 34 | EGGERELLA SCABRA (WILLIAMSON) 1858 | | | | 1.1 | |
| 35 | ELPHIDIELLA ARCTICA (PARKER + JONES) 1864 | | | 0.4 | | |
| 36 | EPISTOMINELLA NARAENSIS (KUWANO) 1950 | 0.5 | | 2.4 | 1.4 | |
| 37 | FISSURINA MARGINATA (MONTAGU) 1803 | 0.5 | | 0.9 | 0.8 | 1.6 |
| 39 | FISSURINA SEMIMARGINATA (REUSS) 1870 | | | | | R |
| 40 | FISSURINA CUCURBITASEMA LOEBLICH + TAPPAN 1953 | | | 0.7 | 0.3 | R |
| 48 | LAGENA APIOPLEURA LOEBLICH + TAPPAN 1953 | 0.1 | | | 0.3 | |
| 50 | LAGENA LAEVIS (MONTAGU) 1803 | 0.1 | | | | R |
| 51 | LAGENA MERIDIONALIS WIESNER 1931 | | | | | 0.1 |
| 52 | LAGENA MOLLIS CUSHMAN 1944 | | | | | 0.1 |
| 53 | LAGENA SEMILINEATA WRIGHT 1886 | | | | | R |
| 56 | NONION SP. | 0.2 | | | | R |
| 59 | NONION(ELLA) LABRADORICA | 0.4 | | | | 0.1 |

BENTHIC FORAMINIFERAL ASSEMBLAGE 7 FOR M=7 (CONTINUED)

| NO. | SPECIES NAME | STATION NUMBERS | | | | | |
|-----|---|-----------------|-----|-----|-----|-----|------|
| | | DEPTH IN METERS | 9 | 11 | 12 | 13 | 14 |
| | | | 136 | 64 | 65 | 58 | 165 |
| 60 | NONION LABRADORICUM (DAWSON) 1860 | 2.6 | | | | | |
| 62 | NONIONELLA AURICULA HERON-ALLEN + EARLAND 1930 | | | | | | R |
| 63 | OOLINA COSTATA LOEBLICH + TAPPAN 1953 | 0.1 | | 0.2 | | | |
| 64 | OOLINA MELO ORBIGNY 1839 | 0.1 | | | | | R |
| 67 | PATELLINA CORRUGATA WILLIAMSON 1858 | | | | | | R |
| 69 | PROTELPIDIUM ORBICULARE (BRADY) 1881 | 4.6 | | | | | |
| 76 | QUINQUELOCULINA SP. CF. Q. AKNERIANA | | | | | | R |
| 77 | QUINQUELOCULINA STALKERI LOEBLICH + TAPPAN 1953 | 0.1 | | | | 0.6 | |
| 79 | REDPHAX CURTUS CUSHMAN 1920 | | | 1.0 | | | |
| 83 | SACCAMMINA SP. | | | | 0.4 | | |
| 89 | TROCHAMMINA OCHRACEA (WILLIAMSON) 1858 | | | | 0.7 | 0.8 | |
| 91 | PROTEONINA ATLANTICA CUSHMAN 1944 | 5.5 | | | | 0.3 | R |
| 96 | ALVEOLOPHRAGMIUM CRASSIMARGO (NORMAN) 1892 | | | 0.5 | | | |
| 101 | EGGERELLA ADVENA (CUSHMAN) 1922 | | | 0.5 | 1.3 | 0.9 | |
| 108 | ELPHIDIIDAE IMMATURE | | | | | | R |
| 109 | PSAMMOSPHAERA SP. | | | 0.2 | 0.4 | 0.6 | |
| 116 | TROCHAMMINA SP. | | | | | | R |
| 118 | WEBBINELLA SP. | | | | | | R |
| 120 | ASTRONONION SP. | 2.1 | | | | | |
| 123 | BULIMINA ACULEATA ORBIGNY 1826 | | | | | 0.3 | |
| 125 | CASSIULINA LAEVIGATA AFF. C. CARINATA | | | | | | 0.1 |
| 133 | EPONIDES PUSILLUS PARR 1950 | 0.4 | | | | | 20.3 |
| 141 | NONIONELLA TURGIDA (WILLIAMSON) 1858 | | | | | | 0.3 |
| 147 | PULLENIA QUINQUELOBA (REUSS) 1851 | 0.4 | | | 0.4 | | 3.4 |
| 152 | ASTACULUS SP. | | | | | | 0.1 |
| 153 | CIBICIDES SP. CF. C. PSEUDOUNGERIANUS | | | | 0.2 | | |
| 166 | ANGULOCERIMA ANGULOSA (WILLIAMSON) 1858 | 13.5 | 0.5 | | | | 40.9 |
| 173 | GAVELINOPSIS SP. NOV. | | | | | | 3.0 |
| 174 | LAGENA SP. | | | | | | R |
| 178 | TEXTULARIA SP. CF. T. TORQUATA | | | | | | R |
| 186 | VAGINULINA SPINIGERA BRADY 1881 | | | | | | R |
| 188 | CIBICIDES SP. CF. C. REFULGENS | | | | 5.3 | | |
| 191 | ASTRONONION SP. CF. A. STELLATUM | | | 1.0 | | | |
| 198 | DISCORBIS SP. CF. D. CHASTERI | | | | 2.6 | 0.3 | |
| 202 | GUTTULINA DAWSONI CUSHMAN + OZAWA 1930 | 0.2 | | | | | |
| 203 | GUTTULINA LACTEA AFF. G. PACIFICA | 0.2 | | | | 0.3 | |

BENTHIC FORAMINIFERAL ASSEMBLAGE 7 FOR M=7 (CONTINUED)

| NO. | SPECIES NAME | STATION NUMBERS | 9 | 11 | 12 | 13 | 14 |
|-----|---|-----------------|-----|-----|-----|-----|-----|
| | | DEPTH IN METERS | 136 | 64 | 65 | 58 | 165 |
| 206 | PSAMMOSPHAERA FUSCA SCHULZE 1875 | | 3.4 | | | | |
| 207 | VIRGULINA FUSIFORMIS WILLIAMSON 1858 | | 0.4 | | | | |
| 209 | TROCHAMMINA GLOBIGERINIFORMIS (PARKER + JONES) 1865 | | 0.6 | | | | |
| 210 | QUINQUELOCULINA SP. CF. O. SEMINULA | | 0.1 | | | | |
| 211 | RECURVIDES SP. | | 0.1 | | | | |
| 212 | GYROIDINA SP. | | 0.3 | | | | |
| 220 | PROTEONINA SP. | | | 0.5 | | | |
| 222 | SCUTULORIS SP. NOV. | | | | | 0.3 | |
| 225 | CIBICIDES LOBATULUS AFF. C. PSEUDOUNGERIANA | | 5.1 | | | | |
| 226 | MARSIPELLA SP. | | | 0.2 | | | R |
| 227 | QUINQUELOCULINA SP. CF. O. PULCHELLA | | | 0.2 | | | |
| 228 | SCUTULORIS TEGMINIS LOEBLICH + TAPPAN 1953 | | | 1.4 | | | |
| 230 | ROSALINA COLUMBIENSIS (CUSHMAN) 1925 | | | | 0.7 | | |
| 231 | DISCORBIS SP. CF. D. BERTHELOTI | | | | 0.7 | | |
| 232 | ANGULOGERINA SP. CF. A. FLUENS | | | | 0.9 | | |
| 233 | BOLIVINA PSEUDOPPLICATA HERON-ALLEN + EARLAND 1930 | | | | 0.4 | | |
| 235 | TROCHAMMINA CONICA EARLAND 1934 | | | | 0.7 | | |
| 236 | ANGULOGERINA ANGULOSA AFF. A. FLUENS | | | | | 0.3 | |
| 237 | ELPHIDIUM BARTLETTI AFF. E. SUBARCTICUM | | | | | 3.3 | |
| 238 | ELPHIDIUM SUBARCTICUM AFF. E. BARTLETTI | | | | | 7.3 | |
| 239 | QUINQUELOCULINA SEMINULA (LINNAEUS) 1767 | | | | | 2.5 | |
| 240 | REOPHAX SP. | | | | | 0.3 | |
| 242 | BOLIVINA SP. CF. B. SPATHULATA | | | | | | R |
| 243 | CASSIDULINA SP. | | | | | | R |
| 244 | DENTALINA MELVILLENSIS LOEBLICH + TAPPAN 1953 | | | | | | R |
| 245 | HYPERAMMINA SP. | | | | | | R |
| 246 | LENTICULINA SP. | | | | | | R |
| 247 | LAGENA SP. CF. L. STELLIGERA | | | | | | 0.4 |
| 248 | NONION IMMATURE | | | | 0.9 | | 1.1 |
| 249 | EPONIDES SP. A | | | | | | R |
| 250 | EPONIDES SP. B | | | | | | R |
| 251 | DISCORBIS SP. A | | | | | 0.3 | |
| 252 | DISCORBIS SP. B | | | | | 0.3 | |
| 272 | NONIONELLA AURICULA AFF. NONION GRATILOUPI | | 0.3 | | | | |

APPENDIX B

ASSEMBLAGE-UBIQUITOUS SPECIES

THE FOLLOWING 3 SPECIES WERE FOUND TO BE UBIQUITOUS FOR ASSEMBLAGE 1

| SPECIES NUMBER | NAME |
|----------------|------------------------------------|
| 5 | ANGULOGERINA FLUENS TODD 1947 |
| 10 | BUCCELLA INUSITATA ANDERSEN 1952 |
| 12 | CASSIDULINA ISLANDICA NORVANG 1945 |

THE FOLLOWING SPECIES WAS FOUND TO BE UBIQUITOUS FOR ASSEMBLAGE 2

| SPECIES NUMBER | NAME |
|----------------|------------------------------------|
| 34 | EGGERELLA SCABRA (WILLIAMSON) 1858 |

THE FOLLOWING 13 SPECIES WERE FOUND TO BE UBIQUITOUS FOR ASSEMBLAGE 3

| SPECIES NUMBER | NAME |
|----------------|---|
| 5 | ANGULOGERINA FLUENS TODD 1947 |
| 10 | BUCCELLA INUSITATA ANDERSEN 1952 |
| 11 | BUCCELLA FRIGIDA (CUSHMAN) 1922 |
| 12 | CASSIDULINA ISLANDICA NORVANG 1945 |
| 13 | CASSIDULINA TERETIS TAPPAN 1951 |
| 15 | CIBICIDES LOBATULUS (WALKER + JACOB) 1798 |
| 26 | ELPHIDIUM BARTLETTI CUSHMAN 1933 |
| 29 | ELPHIDIUM CLAVATUM CUSHMAN 1930 |
| 31 | ELPHIDIUM SUBARCTICUM CUSHMAN 1944 |
| 35 | ELPHIDIELLA ARCTICA (PARKER + JONES) 1864 |
| 37 | FISSURINA MARGINATA (MONTAGU) 1803 |
| 48 | LAGENA APIOPLEURÀ LOEBLICH + TAPPAN |
| 64 | OOLINA MELO ORBIGNY 1839 |

THE FOLLOWING 2 SPECIES WERE FOUND TO BE UBIQUITOUS FOR ASSEMBLAGE 4

| SPECIES NUMBER | NAME |
|----------------|---------------------------------|
| 101 | EGGERELLA ADVENA (CUSHMAN) 1922 |
| 109 | PSAMMOSPHAERA SP. |

APPENDIX B (Cont'd)

THE FOLLOWING 5 SPECIES WERE FOUND TO BE UBIQUITOUS FOR ASSEMBLAGE 5

| SPECIES NUMBER | NAME |
|----------------|-----------------------------------|
| 9 | BULIMINA EXILIS BRADY 1884 |
| 10 | BUCCELLA INUSITATA ANDERSEN 1952 |
| 60 | NONION LABRADORICUM (DAWSON) 1860 |
| 124 | BULIMINA MARGINATA ORBIGNY 1826 |
| 149 | VIRGULINA COMPLANATA EGGER 1893 |

THE FOLLOWING 2 SPECIES WERE FOUND TO BE UBIQUITOUS FOR ASSEMBLAGE 6

| SPECIES NUMBER | NAME |
|----------------|--|
| 1 | ADERCOTRYMA GLOMERATA (BRADY) 1878 |
| 2 | ALVEOLOPHRAGMIUM JEFFREYSI (WILLIAMSON) 1858 |

THE FOLLOWING 4 SPECIES WERE FOUND TO BE UBIQUITOUS FOR ASSEMBLAGE 7

| SPECIES NUMBER | NAME |
|----------------|---|
| 10 | BUCCELLA INUSITATA ANDERSEN 1952 |
| 12 | CASSIDULINA ISLANDICA NORVANG 1945 |
| 15 | CIBICIDES LOBATULUS (WALKER + JACOB) 1798 |
| 29 | ELPHIDIUM CLAVATUM CUSHMAN 1930 |

APPENDIX C

ASSEMBLAGE-INDICATOR SPECIES

INDICATOR SPECIES FOR ASSEMBLAGE 1

- 23 PROTELPHIDIUM SP.
- 61 NONION SP. CF. N. POMPILIOIDES
- 167 BULIMINA SP. CF. B. EXILIS
- 168 BUCCELLA SP.
- 169 BULIMINA SP. CF. B. FUSIFORMIS
- 170 CASSIDULINA SP. CF. C. ISLANDICA
- 171 DENTALINE SP.
- 172 EPONIDES SP.
- 176 NONIONELLA SP.
- 177 OOLINA SP. CF. O. CAUDIGERA
- 179 TROCHAMMINA LOBATA CUSHMAN 1944
- 181 TROCHAMMINA SQUAMATA JONES + PARKER 1860
- 182 TEXTULARIA SP.
- 195 ANOMALINA SP.
- 196 BULIMINA SP. CF. B. MARGINATA
- 197 CASSIDULINA SP. CF. C. NORCROSSI
- 199 EPISTOMINELLA SP.
- 201 GLABRATTELLA SP. CF. G. WRIGHTII
- 262 BULIMINA ACULEATA AFF. B. MARGINATA
- 263 BOLIVINA SP. A
- 264 BOLIVINA SP. B
- 265 NONION OR ELPHIDIUM
- 267 NONIONELLA SP. CF. N. AURICULA AFF. NONION GRATELOUPI
- 269 REOPHAX CURTUS AFF. R. SCORPIURUS
- 271 OOLINA SP.
- 273 PROTELPHIDIUM SP. CF. P. ORBICULARE
- 274 ELPHIDIUM SP. CF. E. SUBARCTICUM
- 277 ANGULOGERINA SP. CF. A. ANGULOSA
- 280 TROCHAMMINA SP. CF. T. QUADRILLOBA
- 281 LAGENA SP. CF. L. GRACILLIMA
- 295 BOLIVINA SP. CF. B. PUNCTATA
- 296 LAGENA PARRI LOEBLICH + TAPPAN 1953
- 299 DENTALINA PAUPERATA ORBIGNY 1846
- 300 VALVULINA SP. CF. V. FUSCA
- 301 RECTOGLANDULINA SP. CF. R. TORRIDA
- 302 RECTOGLANDULINA ROTUNDATA (REUSS) 1850
- 304 CASSIDULINA TERETIS AFF. C. LAEVIGATA
- 305 TROCHAMMINA SP. CF. T. BULLATA
- 312 CIBICIDES SP. A
- 313 CIBICIDES SP. B

APPENDIX C (Cont'd)

INDICATOR SPECIES FOR ASSEMBLAGE 2

- 253 REOPHAX FUSIFORMIS (WILLIAMSON) 1858
- 254 TROCHAMMINA SQUAMATA AFF. T. MACRESCENS
- 256 TROCHAMMINA SP. CF. T. ADAPERTA
- 257 GYROIDINA QUINQUELOBA UCHIO 1960
- 258 DISCORBIS SP. CF. PNINAELLA PULCHELLA
- 259 INCERTAE SEDIS LEPTODERMELLA

INDICATOR SPECIES FOR ASSEMBLAGE 3

- 3 ASTACOLUS HYALACRULUS LOEBLICH + TAPPAN 1953
- 19 DENTALINA BAGGI GALLOWAY + WISSLER 1927
- 43 GLABRATELLA WRIGHTII (BRADY) 1881
- 44 GLOBULINA SP. CF. G. GLACIALIS
- 45 GUTTULINA LACTEA (WALKER + JACOB) 1798
- 46 GUTTULINA EARLANDI CUSHMAN + OZAWA 1930
- 54 LARYNGOSIGMA HYALASCIDIA LOEBLICH + TAPPAN 1953
- 55 LAMARCKINA HALIOTIDEA (HERON-ALLEN + EARLAND) 1911
- 57 NONION SCAPHUM (FICHEL + MOLL) 1798
- 68 POLYMORPHINA SP. NOV. AFF. P. FLINTII
- 71 QUINQUELOCULINA ARCTICA CUSHMAN 1933
- 72 QUINQUELOCULINA AGGLUTINATA CUSHMAN 1917
- 74 QUINQUELOCULINA NITIDA NORVANG 1945
- 75 QUINQUELOCULINA SP. CF. Q. NORVANGI
- 81 ROBERTINOIDES CHARLOTTENSIS (CUSHMAN) 1925
- 86 TRILOCULINA SP. CF. T. ANGULARIS
- 87 TRILOCULINA TRIHEDRA LOEBLICH + TAPPAN 1953
- 90 TROCHAMMINA NANA (BRADY) 1881
- 94 CALCAREOUS INDETERMINATE
- 213 CONORBINA SP.
- 214 ELPHIDIELLA SP.
- 215 EPISTOMINELLA SP. CF. E. NARAENSIS
- 216 GUTTULINA LACTEA AFF. G. AUSTRICA
- 217 HIPPOCREPINA SP. CF. H. INDIVISOR
- 218 OOLINA STRIATOPUNCTATA (PARKER + JONES) 1865
- 219 PLANORBULINA MEDITERRANENSIS ORBIGNY 1826
- 221 QUINQUELOCULINA AKNERIANA ORBIGNY 1846
- 223 THOLOSINA BULLA (BRADY) 1881
- 224 FURRISPIRILLINA ARCTICA (CUSHMAN) 1933
- 308 ELPHIDIUM SP. CF. E. EXCAVATUM
- 309 OOLINA SQUAMOSA (MONTAGU) 1893

APPENDIX C (Cont'd)

INDICATOR SPECIES FOR ASSEMBLAGE 4

- 283 MILIAMMINA FUSCA (BRADY) 1870
- 284 PROTEONINA SP. CF. P. ATLANTICA
- 285 AMMOTIUM SP. CF. A. CASSIS
- 286 PROTEONINA SP. CF. P. DIFFLUGIFORMIS
- 287 PROTEONINA SP. CF. P. AMPULLACEA
- 288 WEBBINELLA SP. CF. W. HEMISPHAERICA
- 291 HYPERAMMINA FRAGMENTS
- 292 MILIAMMINA SP. CF. M. FUSCA
- 293 PROTEONINA FUSIFORMIS
- 294 AMMOSCALARIA SP. CF. A. TENUIMARGO
- 314 ELPHIDIUM OR NONION SP.
- 315 TEXTULARIA SP. CF. T. EARLANDI
- 316 HYPERAMMINA SP. A
- 317 HYPERAMMINA SP. B

INDICATOR SPECIES FOR ASSEMBLAGE 5

- 119 ASTACOLUS SP. CF. A. HYALACRULUS
- 126 FISSURINA SP. CF. F. SEMIMARGINATA
- 128 CIBICIDES SP. IMMATURE
- 129 DISCORBIS CHASTERI (HERON-ALLEN + EARLAND) 1913
- 131 LENTICULINA SP. CF. L. GIBBA
- 132 DISCORBIS OBTUSA CUSHMAN 1931
- 134 FISSURINA SP.
- 135 GLOBOBULIMINA SP. CF. G. TURGIDA
- 137 GYROIDINA SP. CF. G. QUINQUELOBA
- 139 LAGENA GRACILIS WILLIAMSON 1848
- 140 LAGENA HISPIDA REUSS 1863
- 142 OSANGULARIA SP.
- 143 OOLINA HEXAGONA (WILLIAMSON) 1848
- 144 PARAFISSURINA TECTULOSTOMA LOEBLICH + TAPPAN 1953
- 145 PARAFISSURINA FOLLICULA LOEBLICH + TAPPAN 1953
- 146 PNINAELLA PULCHELLA PARKER 1952
- 148 SIPHOGENERINA ANNULATA BRADY 1884
- 150 VIRGULINA SP. CF. V. FUSIFORMIS
- 155 ELPHIDIUM SP. CF. E. BARTLETTI AFF. E. CLAVATUM
- 156 FISSURINA SP. CF. F. MARGINATA
- 157 FISSURINA LUCIDA (WILLIAMSON) 1848
- 158 GLOBOBULIMINA SP.
- 159 GLOBOBULIMINA TURGIDA (BAILEY) 1851
- 160 LAGENA MOLLIS AFF. L. DISTOMA
- 161 LARYNGOSIGMA SP.
- 162 OOLINA SP. CF. O. HEXAGONA
- 163 PULLENIA SP. CF. P. QUINQUELOBA
- 164 PARAFISSURINA SP.
- 165 RECTOGLANDULINA SP. CF. R. OCCIDENTALIS
- 185 RECTOGLANDULINA SP. CF. GLANDULINA LAEVIGATA

APPENDIX C (Cont'd)

- 187 BULIMINELLA CONVOLUTA (WILLIAMSON) 1858
- 189 LAGENA SP. CF. L. APIOPLEURA
- 190 LAGENA SP. CF. L. STRIATA
- 192 GYROIDINA UMBONATA (SILVESTRI) 1898
- 193 LAGENA SP. CF. L. SETIGERA
- 194 NONION SP. CF. N. ZAANDAMAE
- 200 LEPTODERMELLA SP.
- 208 CYCLAMMINA CANCELLATA BRADY 1879
- 261 TROCHAMMINA SP. CF. T. ATLANTICA
- 279 TROCHAMMINA QUADRILoba HOGLUND 1948

INDICATOR SPECIES FOR ASSEMBLAGE 6

- 98 CAUSIA SP.
- 103 HYPERAMMINA SUBNODOSA BRADY 1884
- 104 MARSIPELLA ELONGATA (RHUMBLER) 1913
- 105 NONION POMPILIOIDES (RICHTEL + MOLL) 1798
- 107 NONIONIDAE IMMATURE
- 110 PYRGO SP. CF. P. ELONGATA
- 111 ROBERTINA ARCTICA ORBIGNY 1846
- 112 REOPHAX SUBFUSIFORMIS EARLAND 1933
- 113 ROTALIA SP.
- 114 SPIRILINA SP.
- 117 VIRGULINA SP. CF. V. BRADYI
- 311 HYPERAMMINA SP. CF. H. SUBNODOSA
- 318 DENDROPHRYA SP.

APPENDIX C (Cont'd)

INDICATOR SPECIES FOR ASSEMBLAGE 7

- 202 GUTTULINA DAWSONI CUSHMAN + OZAWA 1930
- 206 PSAMMOSPHAERA FUSCA SCHULZE 1875
- 207 VIRGULINA FUSIFORMIS WILLIAMSON 1858
- 209 TROCHAMMINA GLOBIGERINIFORMIS (PARKER + JONES) 1865
- 210 QUINQUELOCULINA SP. CF. Q. SEMINULA
- 225 CIBICIDES LOBATULUS AFF. C. PSEUDOUNGERIANA
- 226 MARSIPELLA SP.
- 227 QUINQUELOCULINA SP. CF. Q. PULCHELLA
- 228 SCUTULORIS TEGMINIS LOEBLICH + TAPPAN 1953
- 230 ROSALINA COLUMBIENSIS (CUSHMAN) 1925
- 231 DISCORBIS SP. CF. D. BERTHELOTTI
- 232 ANGULOGERINA SP. CF. A. FLUENS
- 235 TROCHAMMINA CONICA EARLÄND 1934
- 236 ANGULOGERINA ANGULOSA AFF. A. FLUENS
- 237 ELPHIDIUM BARTLETTI AFF. E. SUBARCTICUM
- 238 ELPHIDIUM SUBARCTICUM AFF. E. BARTLETTI
- 239 QUINQUELOCULINA SEMINULA (LINNAEUS) 1767
- 242 BOLIVINA SP. CF. B. SPATHULATA
- 243 CASSIDULINA SP.
- 244 DENTALINA MELVILLENSIS LOEBLICH + TAPPAN 1953
- 247 LAGENA SP. CF. L. STELLIGERA
- 249 EPONIDES SP. A
- 250 EPONIDES SP. B
- 251 DISCORBIS SP. A
- 252 DISCORBIS SP. B