



## **SOUTHWESTERN UTAH NATIVE PLANTS**

*A few of the native plants you might see on a hike  
around St. George, Utah*

Provided by:  
Southwest Utah  
National Conservation Lands Friends (SUNCLF)

**SOUTHWEST UTAH NATIONAL**  
**SUNCLF**  
**CONSERVATION LANDS FRIENDS**

2013

We hope this mini-guide will make your hikes in Southwest Utah even more fun. Many of these plants are not only along hiking trails but even along roads in the area. Keep your eyes open! We hope you draw and write in here to make this your own personal record.

Ask yourself.....

How many of these plants can I find?  
What other plants did I see?  
What animals did I see?  
What else did I notice?

For some hiking trail ideas, visit your local Bureau of Land Management (BLM) office.

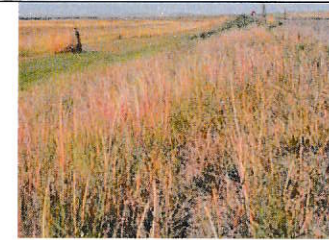
**Get Outdoors  
And  
Have Fun!**

Southwest Utah National Conservation Lands Friends

## NATIVE GRASSES



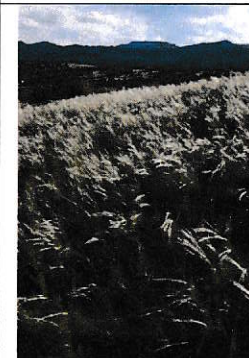
**Galetta**  
*Hilaria jamesii*



**Sand dropseed**  
*Sporobolus cryptandrus*



**Sandberg Bluegrass**  
*Poa secunda*



**Needle and Threadgrass**  
*Stipa Comata*



**Sideoats Grama**  
*Bouteloua curtipendula*



**Indian Ricegrass**  
*Oryzopsis Hymenoides*



**Gooseberryleaf Globemallow** ★  
*Sphaeralcea grossulariifolia*

- Up to 24" tall
- Roundish leaves
- Coral flowers
- Blooms April-Aug.

*Fun fact: looks gray-green because it is covered with hair*

**FOUND IT!**

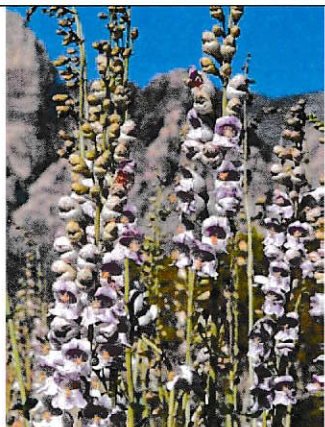
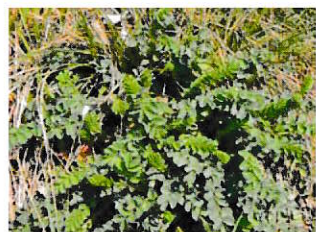


**Small Burnet** ★  
*Sanguisorba minor*

- ¾" – 24" tall
- Compound oval leaves
- Green & Purple blooms
- Blooms May-July

*Fun fact: Deer like to eat small burnet.*

**FOUND IT!**



**Palmer's Penstemon** ★  
*Penstemon palmeri*

- 3'-6' tall
- Triangular leaves with teeth
- Pink, sweet smelling snapdragon-like flowers
- Blooms May & June

*Fun fact: Attracts hummingbirds*

**FOUND IT!**



**Fourwing Saltbrush** ★  
*Atriplex canescens*

- Up to 7' tall
- Oval leaves
- Green or yellow flowers
- Blooms May-Sep.

**FOUND IT!**



**Blue Flax** ★  
*Linum lewisii*

- 12" – 24" tall
- Small narrow leaves
- Blue flowers w/5 petals
- Blooms May-July

*Fun fact: When livestock eats blue flax, it makes them drowsy*

**FOUND IT!**



**You identify this one!**

**Common Name**

**Scientific Name**

**FOUND IT!**





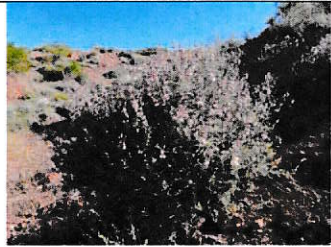
**You identify this one!**

**Common Name**

*Scientific Name*



**FOUND IT!**



**Mexican  
Bladdersage**

*Salazaria mexicana*

*Fun fact: Also known as the Paperbag Bush because it grows thin bags over the fruit that look and crinkle like paperbags.*

**FOUND IT!**



**Skunkbush Sumac**

*Rhus trilobata*

- 2' – 8' tall
- Leaflets grow in groups of 3
- Flowers in early Spring and then red berries

*Fun fact: Berries are sour but can be brewed to make a kind of lemonade.*



**FOUND IT!**



**Mormon Tea**

*Ephedra viridis*

*Fun fact: Pioneers and Native Americans have used this plant as a stimulant, but don't eat it if you find it because it is very bitter! Plus, use of Ephedra has been shown to cause very negative side effects.*

**FOUND IT!**



**You identify this one!**

**Common Name**

*Scientific Name*



**FOUND IT!**



**Sand Sagebrush**

*Artemisia filifolia*

**FOUND IT!**



### Indigo Bush

*Psoralea fremontii*

- 2'-3' tall
- Grey-green leaves
- Bright blue/purple flowers in Spring
- Bare most of the year with white twisted branches

*Fun fact: This plant is in the pea family*

**FOUND IT!**



### Plains Pricklypear Cactus

*Opuntia polyacantha*

**FOUND IT!**



### Buckhorn Cholla Cactus

*Opuntia acanthocarpa*

**FOUND IT!**

### RARE PLANTS

If you see these plants, you are lucky! Some of these are so rare that they are only ever seen in our area.



### Dwarf Bearclaw Poppy

*Arctomecon humilis*



### Gierisch Mallow

*Sphaeralcea gierischii*



### Shivwits Milkvetch

*Astragalus ampullarioides*



Photo from USFWS Mountain Prairie

### Holmgren Milkvetch

*Astragalus-holmgreniorum*



### Siler's Pincushion

*Pediocactus sileri*

**Use these blank pages to record what else you see when you Get Outdoors!**


**Use these blank pages to record what else you see when you Get Outdoors!**
