

Duck River Basin Fishes and Fishing Opportunities



Alex Bybel and Darrell Bernd
Rivers and Streams - Region 2
Tennessee Wildlife Resources Agency

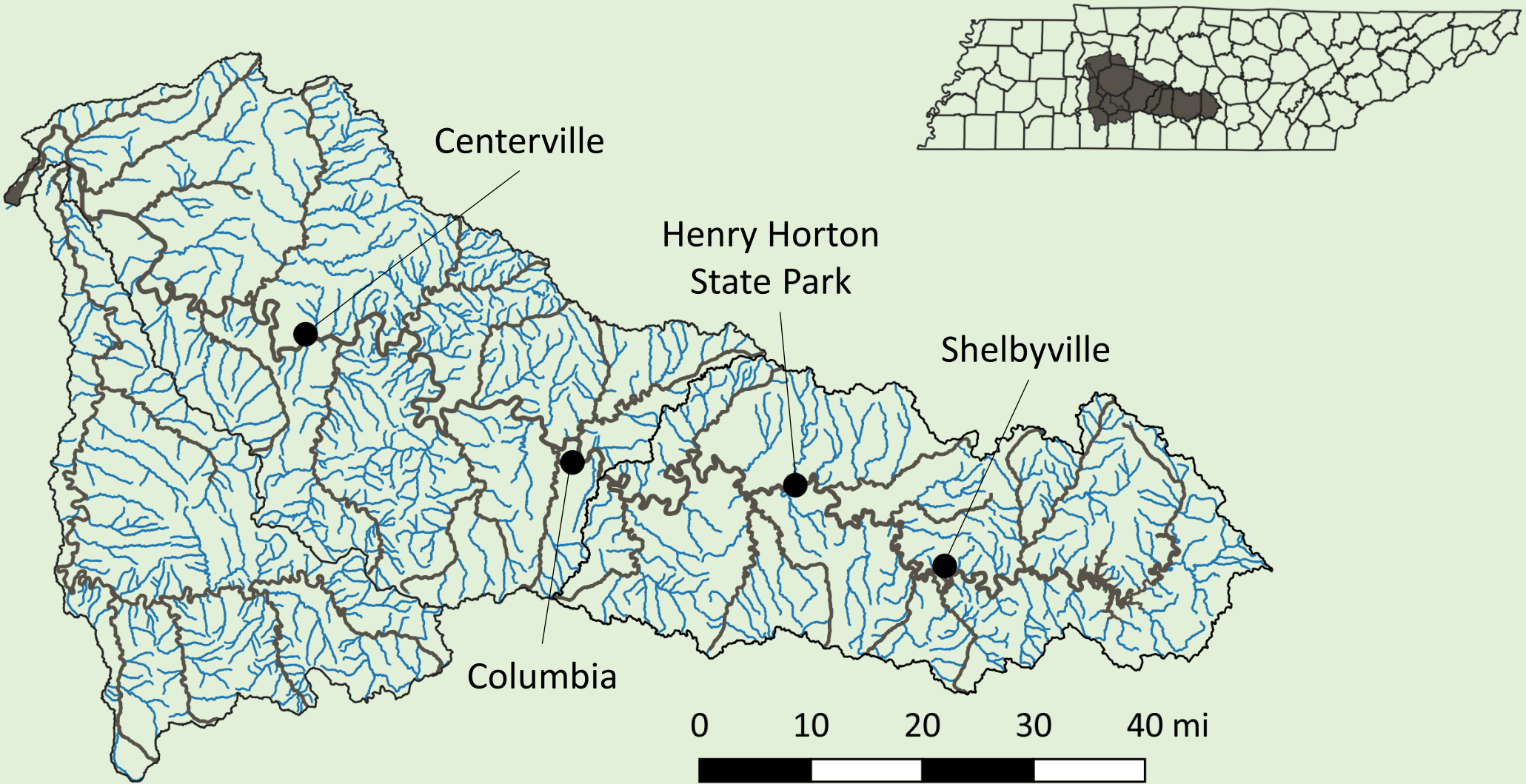


Duck River Overview

- Longest river located entirely in Tennessee (284 miles)
- Flows through 4 ecoregions
 - Eastern Highland Rim
 - Outer Nashville Basin
 - Inner Nashville Basin
 - Western Highland Rim
- Most biologically diverse river in North America
 - 151 fish species



Headwater / Small Streams



Headwater / Small Streams



Unnamed Tributary
to Bedford Lake



Dotty Creek



Headwater Stream Fishes



Southern Redbelly Dace
(*Chrosomus erythrogaster*)



Rosyside Dace
(*Clinostomus funduloides*)



Blacknose Dace
(*Rhinichthys atratulus*)



Creek Chub
(*Semotilus atromaculatus*)



Banded Sculpin
(*Rhinichthys atratulus*)



Fringed Darter
(*Etheostoma crossopterygum*)



Small Stream Fishes



Longear Sunfish
(*Lepomis megalotis*)



Scarlet Shiner
(*Campostoma oligolepis*)



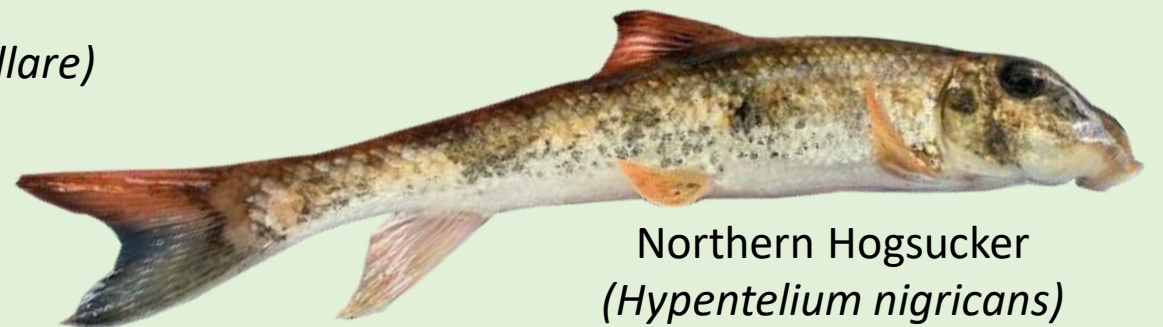
Largescale Stoneroller
(*Campostoma oligolepis*)



Fantail Darter
(*Etheostoma flabellare*)



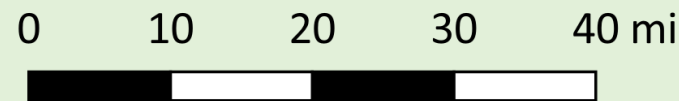
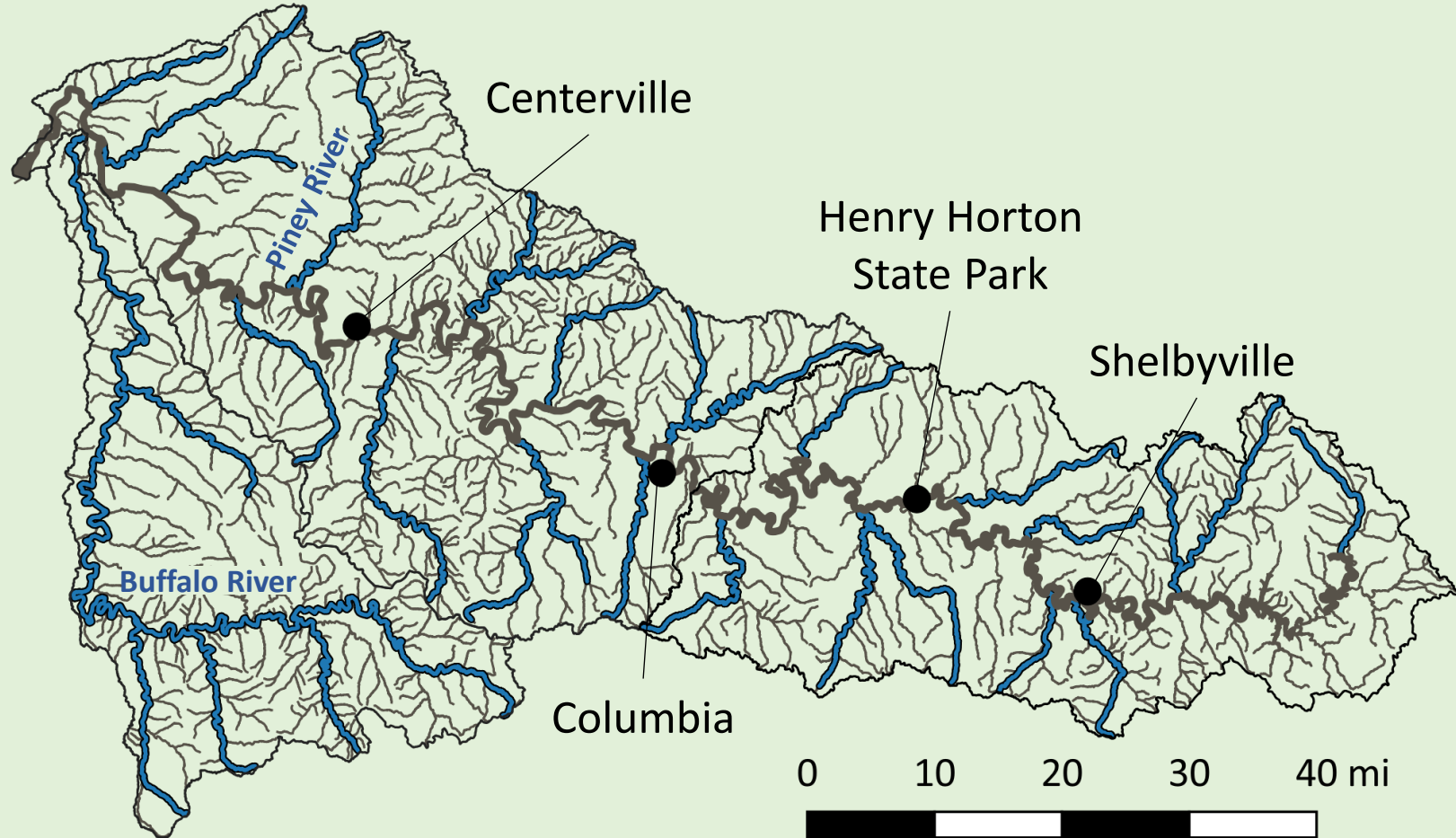
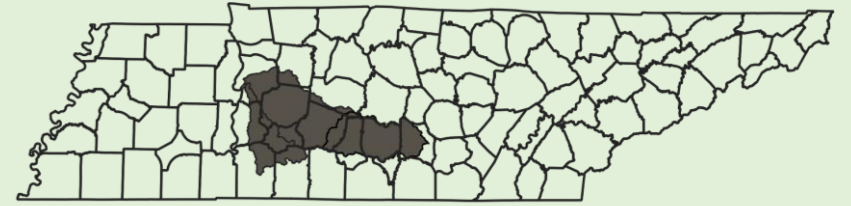
Rainbow Darter
(*Etheostoma caeruleum*)



Northern Hogsucker
(*Hypentelium nigricans*)



Tributary Rivers and Streams



Larger Tributaries



Lick Creek



Buffalo River



Medium to Large Tributary Fishes



Slender Madtom
(*Noturus exilis*)



Northern Studfish
(*Fundulus catenatus*)



Redline Darter
(*Etheostoma rufilineatum*)



Telescope Shiner
(*Notropis telescopus*)



Bluntnose Minnow
(*Notropis telescopus*)



Greenside Darter
(*Etheostoma blennioides*)



Medium to Large Stream Fishes



Warmouth
(*Lepomis gulosus*)



Smallmouth Bass
(*Micropterus dolomieu*)



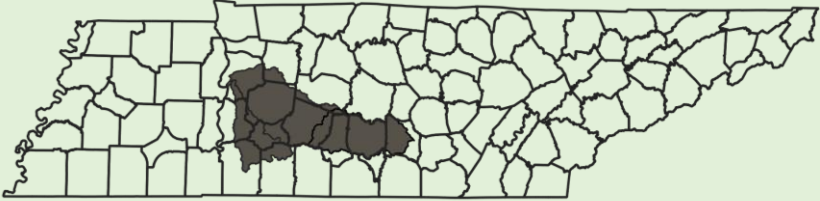
Golden Redhorse
(*Moxostoma erythrurum*)



Rock Bass
(*Ambloplites rupestris*)



Duck River



Duck River



Upper Duck



Lower Duck



Duck River Fishes



Silver Shiner
(*Notropis photogenis*)



Whitetail Shiner
(*Cyprinella galactura*)



Gilt Darter
(*Percina evides*)



Gizzard Shad
(*Dorosoma cepedianum*)



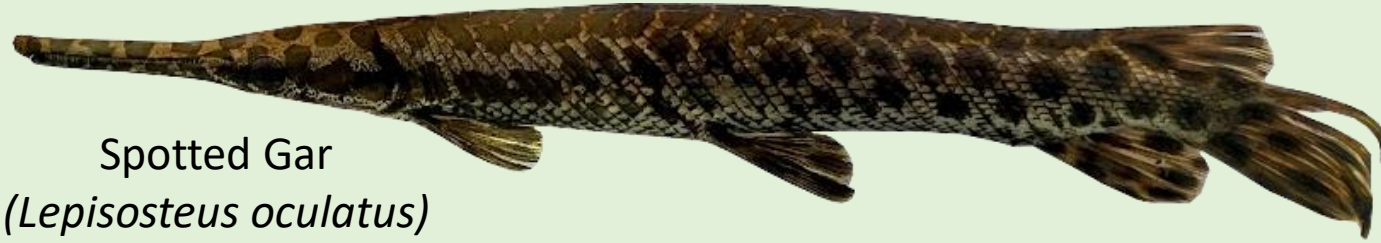
Streamline Chub
(*Erimystax dissimilis*)



Logperch
(*Percina caprodes*)



Duck River Fishes



Spotted Gar
(*Lepisosteus oculatus*)



Smallmouth Buffalo
(*Ictiobus bubalus*)



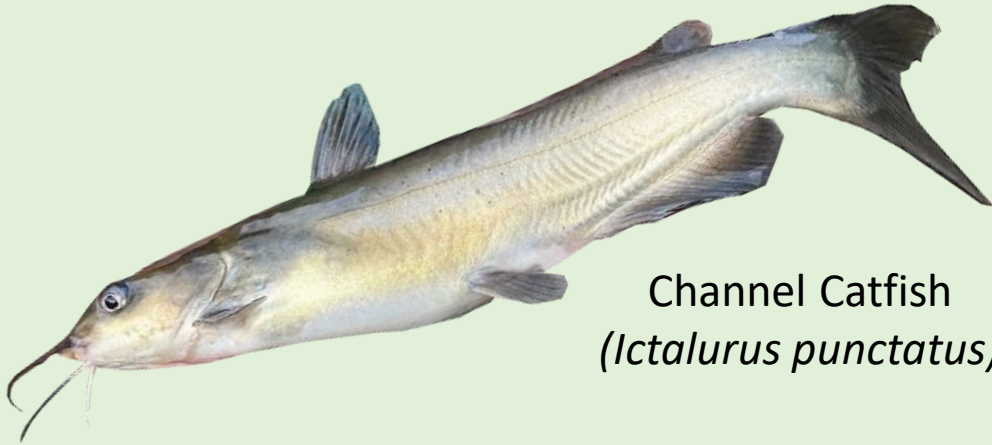
Silver Redhorse
(*Moxostoma anisurum*)



Chesnut Lamprey
(*Ichthyomyzon castaneus*)



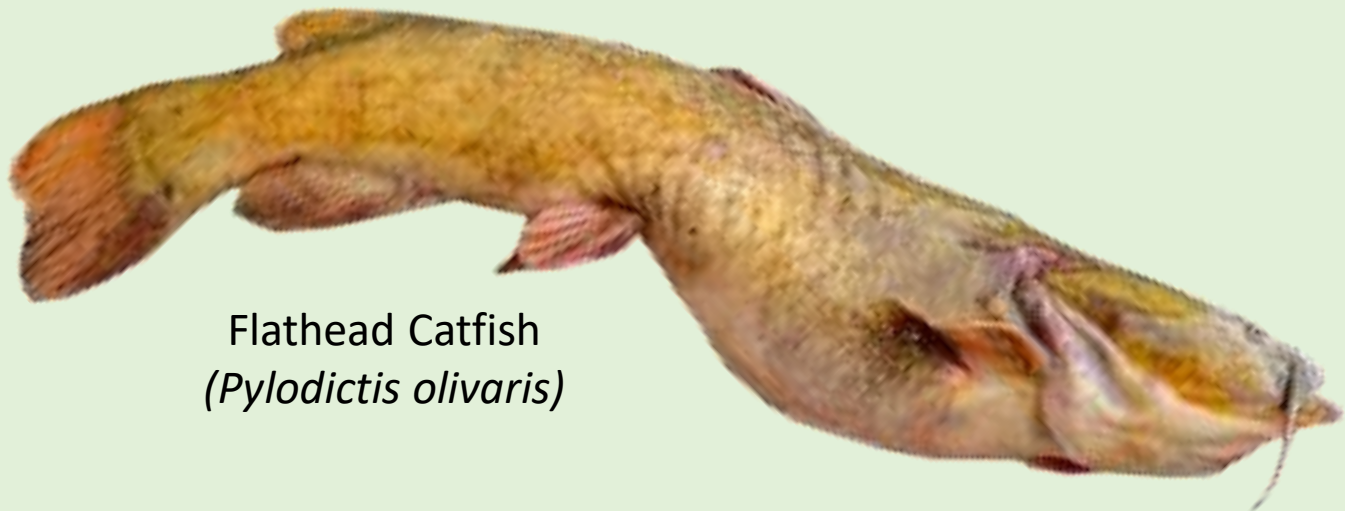
Duck River Fishes



Channel Catfish
(*Ictalurus punctatus*)



Smallmouth Bass
(*Micropterus dolomieu*)



Flathead Catfish
(*Pylodictis olivaris*)



Imperiled Fishes of Duck River

Endangered

- **Barrens Topminnow***
- Longhead Darter
- **Pygmy Madtom***
- Striated Darter



Flame Chub
(*Hemitremia flammea*)

Threatened

- Ashy Darter
- Coppercheek Darter
- Flame Chub
- Saddled Madtom
- **Spotfin Chub ***



Coppercheek Darter
(*Nothnotus aquali*)



Saddled Madtom
(*Nothnotus aquali*)

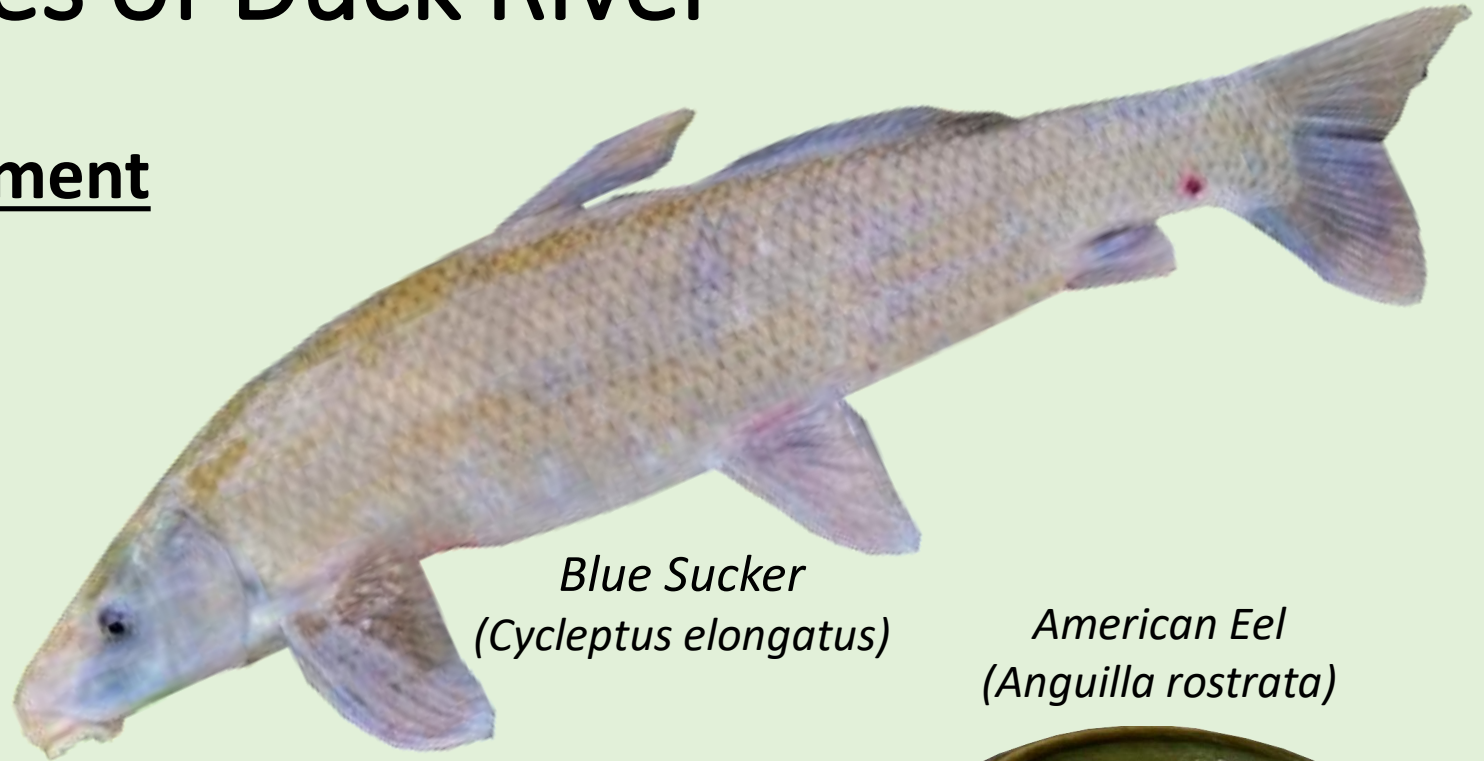
*Federally listed



Imperiled Fishes of Duck River

In Need of Management

- American Eel
- Bedrock Shiner
- Blue Sucker
- Egg-mimic Darter
- Highfin Carpsucker
- Redband Darter
- Southern Cavefish
- Tennessee Logperch



Blue Sucker
(*Cycleptus elongatus*)

American Eel
(*Anguilla rostrata*)



Tennessee Logperch
(*Percina apina*)



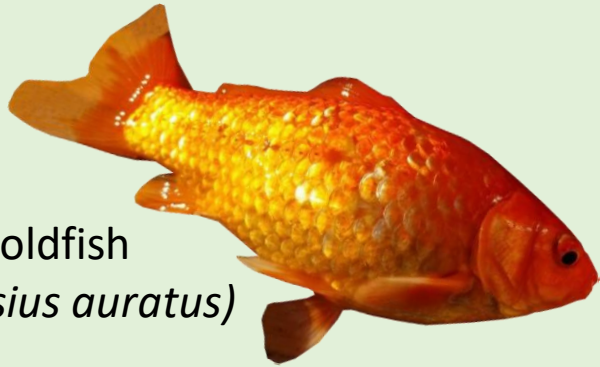
Invasive Fishes



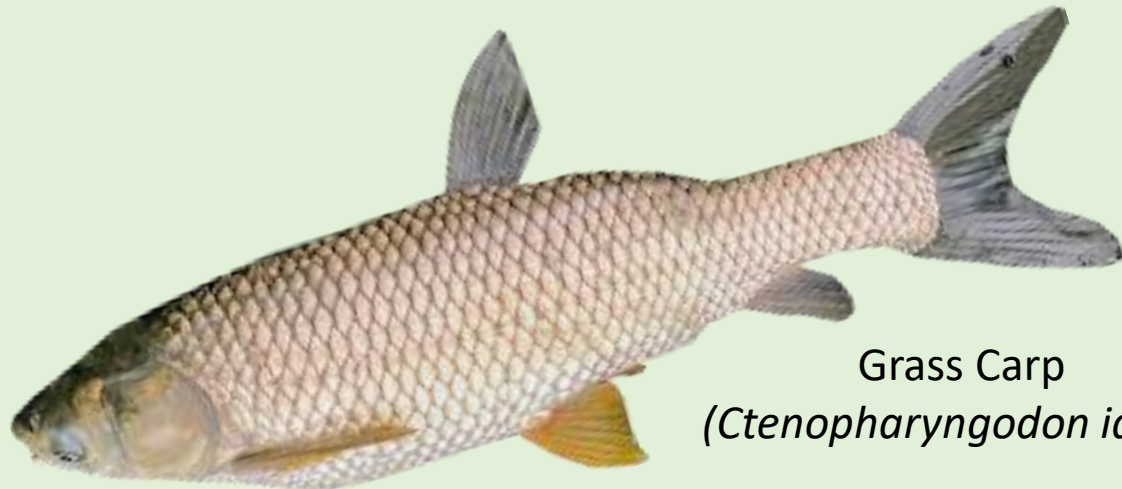
Mosquitofish
(*Gambusia affinis*)



Silver Carp
(*Hypophthalmichthys molitrix*)



Goldfish
(*Carassius auratus*)



Grass Carp
(*Ctenopharyngodon idella*)

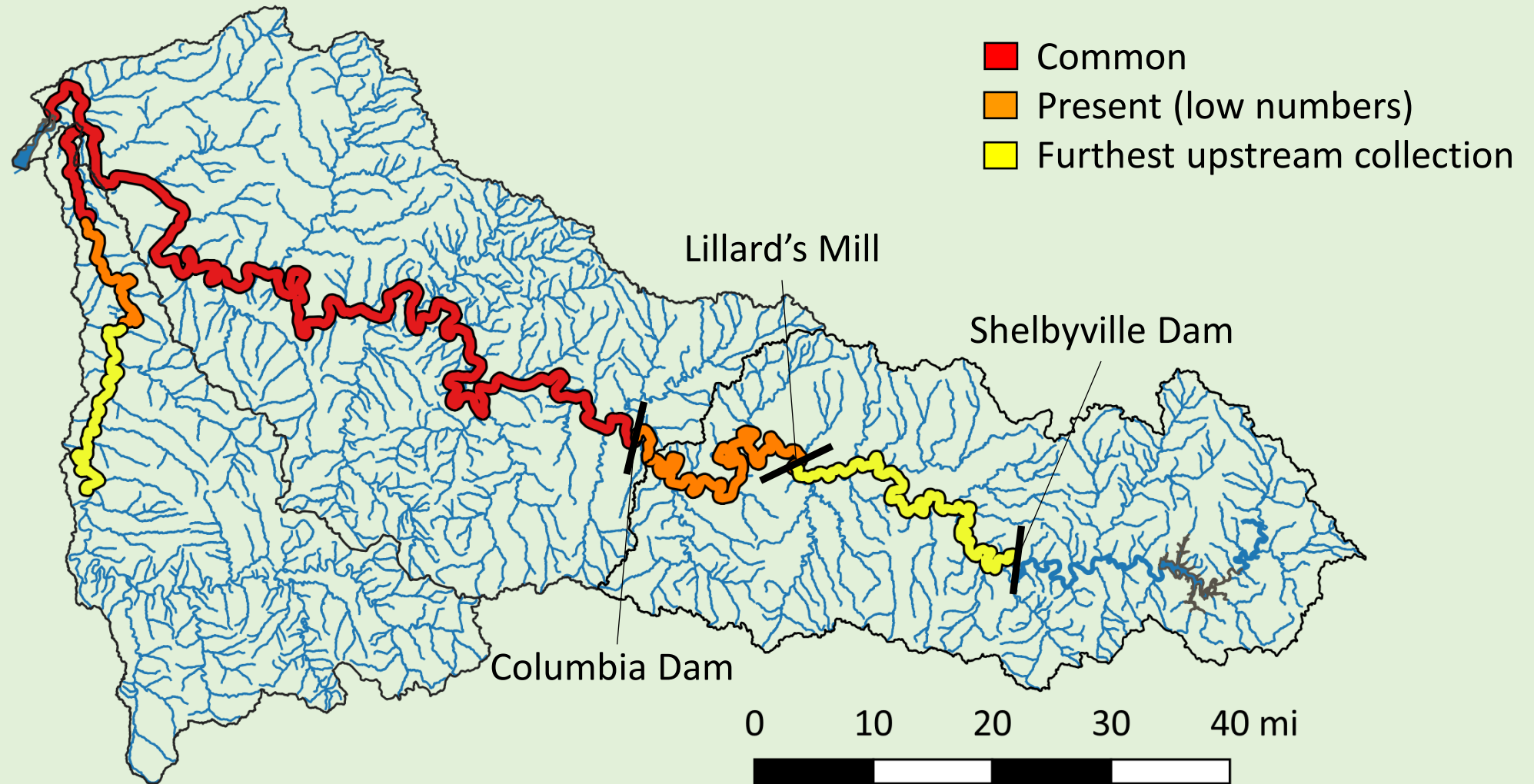


Silver Carp

- Produce over 1 million eggs annually
- Fast growth limits predation by other fish
- Outcompete native species
- Ability to leap out of water hazardous for boaters

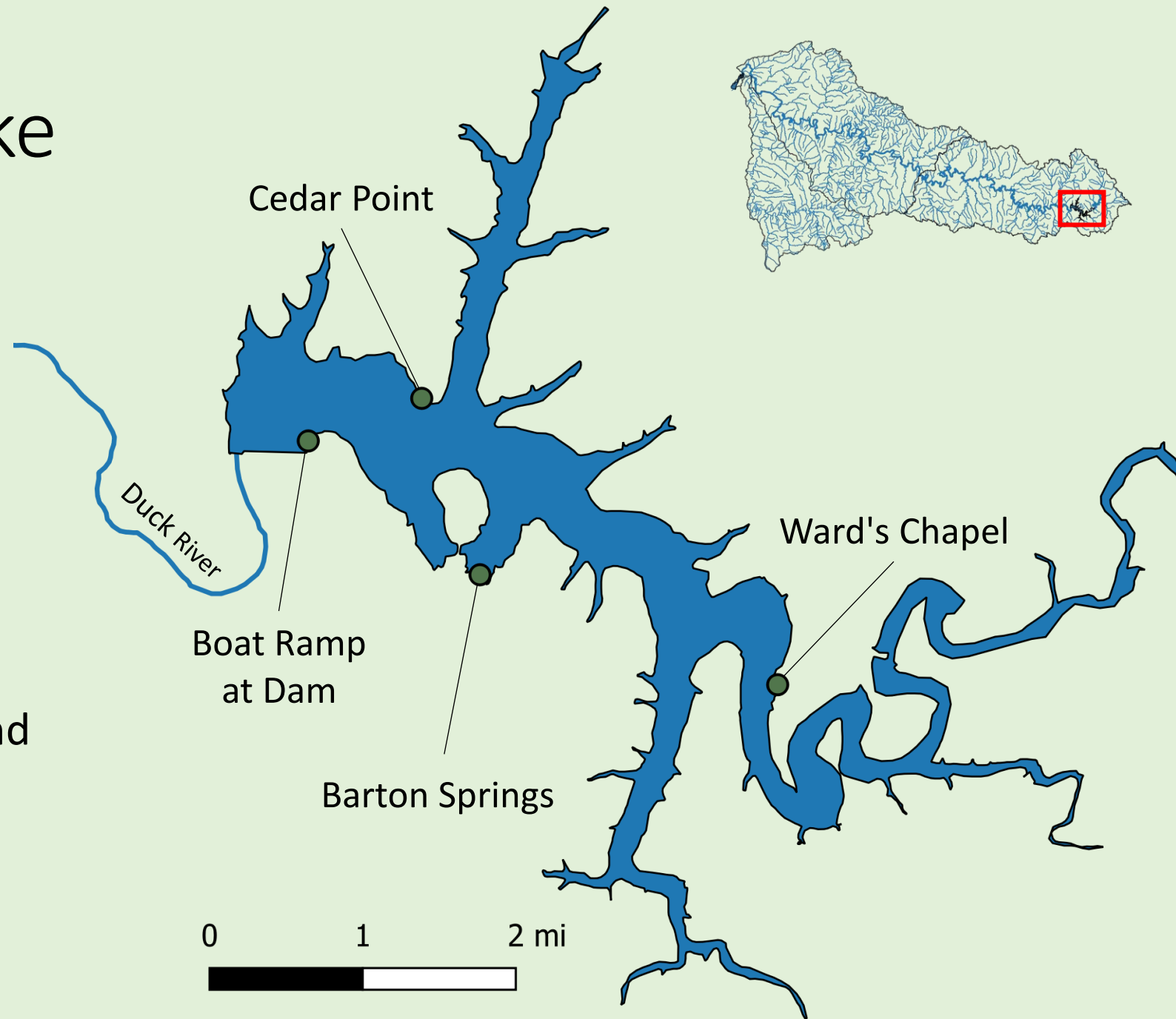


Silver Carp in The Duck River



Normandy Lake

- Constructed in 1976
- 3280 acres
- 4 public Boat Launches
- Stocked with Walleye and Black Crappie



Sportfish of Normandy Lake



Black Crappie
(*Pomoxis nigromaculatus*)



Walleye
(*Sander vitreus*)



Largemouth Bass
(*Micropterus salmoides*)



Smallmouth Bass
(*Micropterus dolomieu*)



Normandy Dam

- Operated by Tennessee Valley Authority (TVA)
- Flows regulated for flood control, water usage and downstream biodiversity.
- Summer water temperatures typically in low 70s °F, can reach 80 °F+

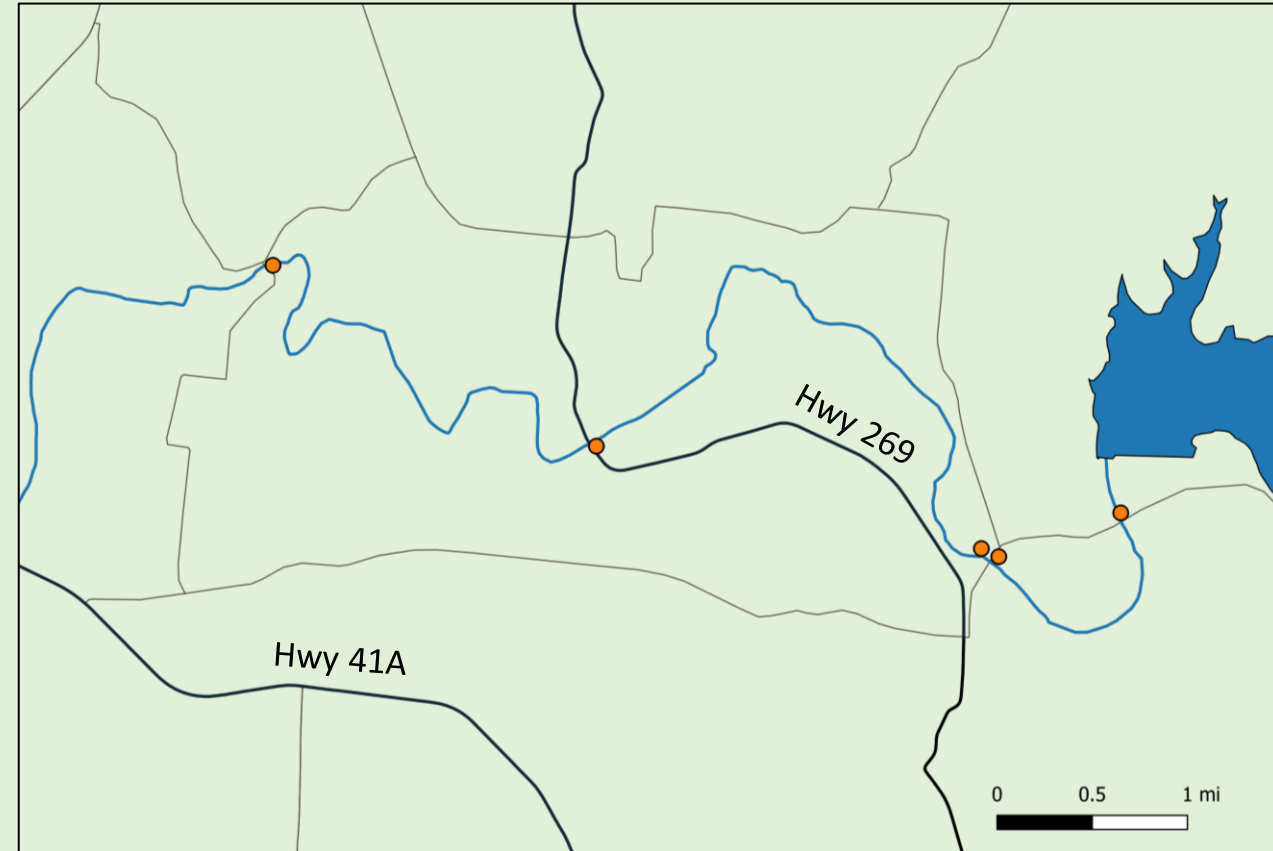
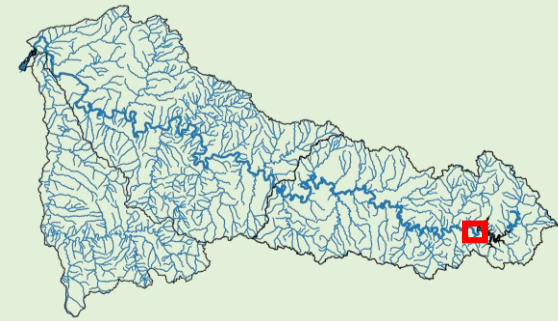


Normandy Tailwater

- Rainbow Trout stocked since 1990
- Considered a “put and take” fishery
- Stocking occurs between November and June



Rainbow Trout
(*Oncorhynchus mykiss*)



Sportfish of Duck River



Smallmouth Bass
(*Micropterus dolomieu*)



Rock Bass
(*Ambloplites rupestris*)



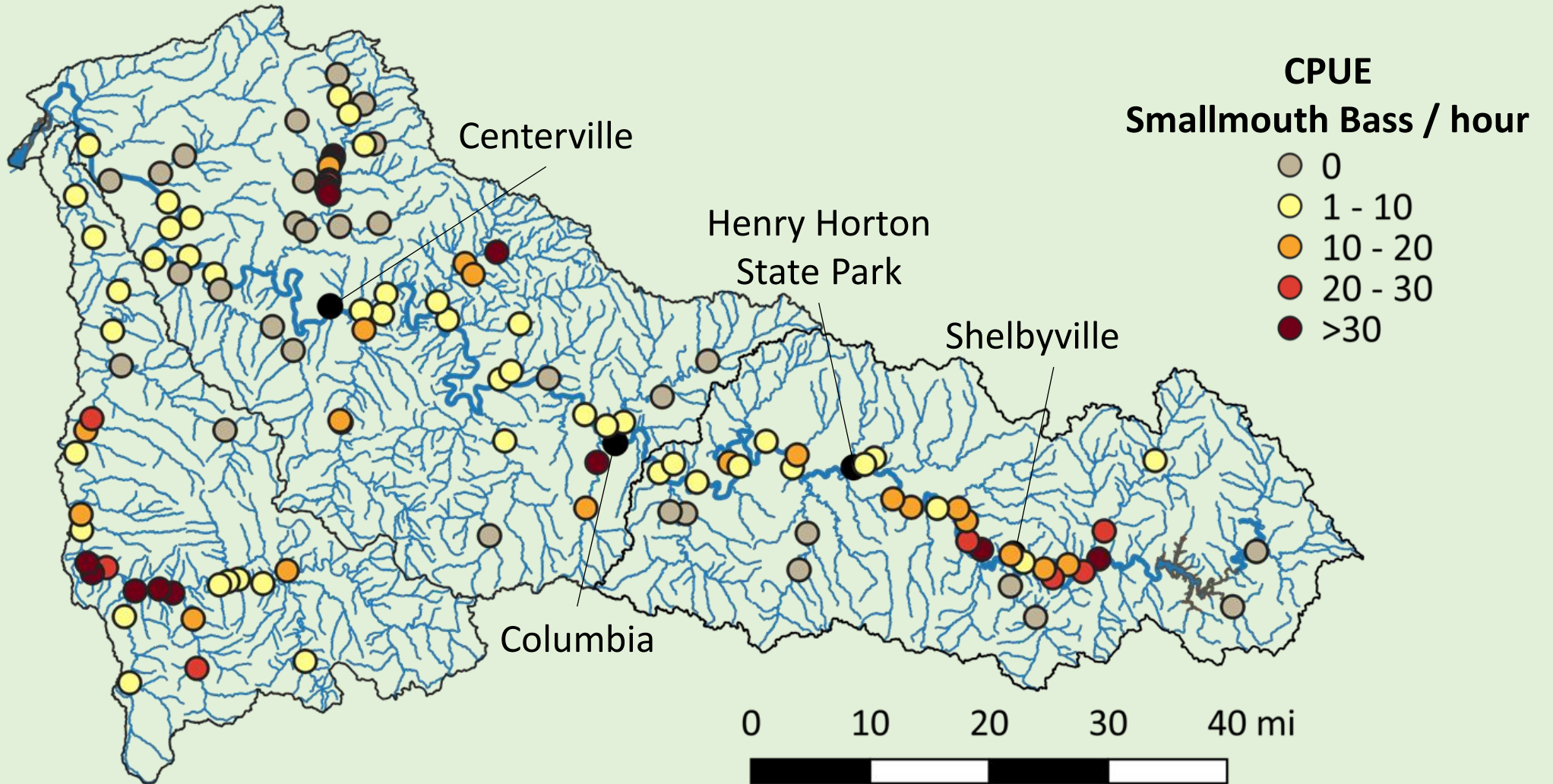
Channel Catfish
(*Ictalurus punctatus*)



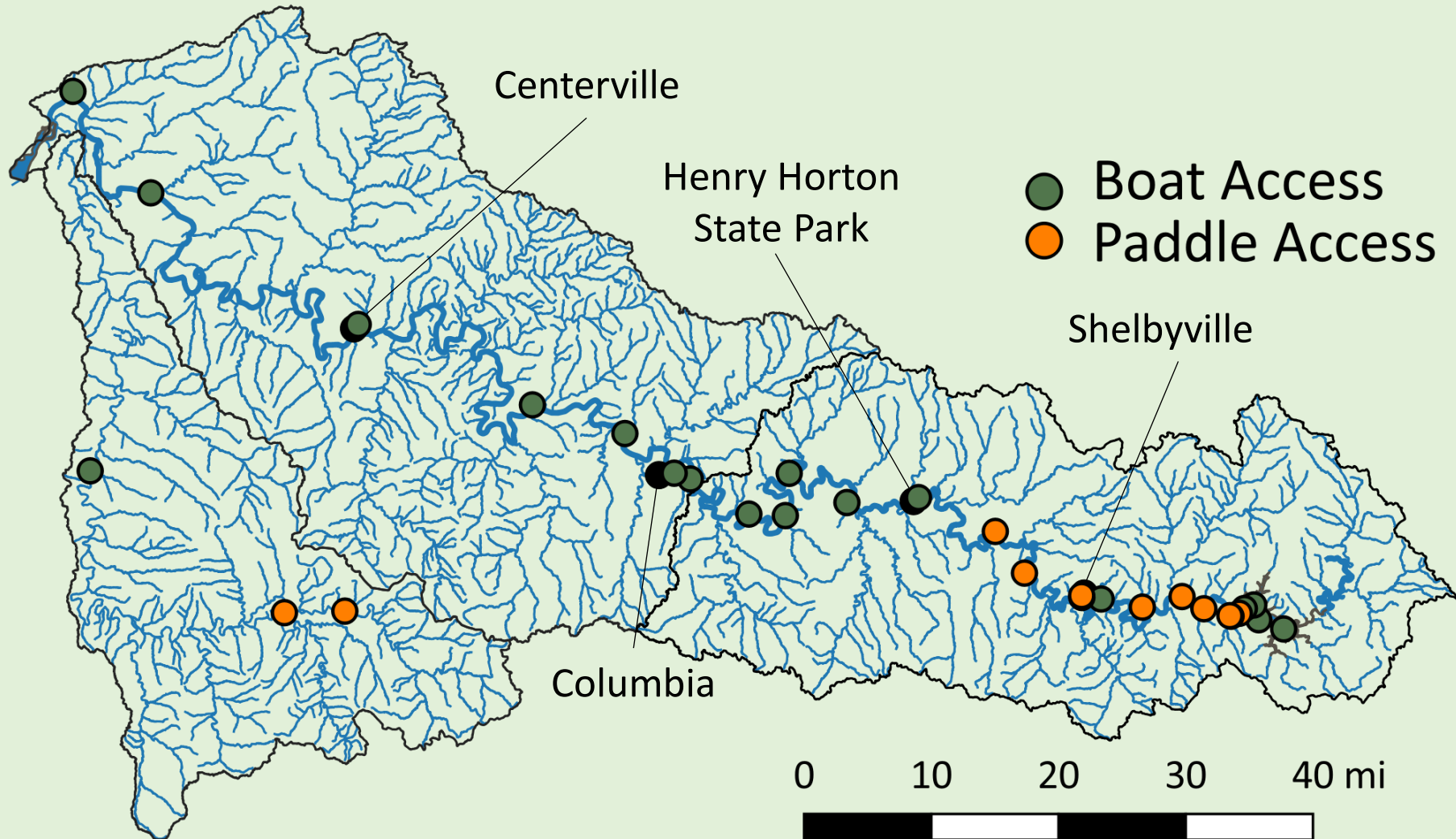
Flathead Catfish
(*Pylodictis olivaris*)



Smallmouth Bass Sampling in Duck River



Duck River Floating Access



TWRA Website Fishing Information

TN Tennessee Wildlife Resources Agency

Search TWRA

Licenses Fishing Boating Hunting Wildlife/Biodiversity Law Enforcement Stay Connected Guides, Rules and Regulations

Fishing Where to Fish

Where to Fish

Find A Spot To Fish! (Click your area)

- West Tennessee (Region 1)
- Middle Tennessee (Region 2)
- Cumberland Plateau (Region 3)
- East Tennessee (Region 4)

TN Licenses Fishing Boating Hunting Wildlife/Biodiversity Law Enforcement Stay Connected Guides, Rules and Regulations

Duck River Map

Find address or place

Duck River Williamsport Hampshire Chapel Hill

Fish Species

Largemouth, Smallmouth, and Spotted Bass are abundant throughout the Duck River providing excellent fishing opportunities. Rock Bass are more abundant in the swifter, rockier upper half of the Duck River upstream of Columbia. Electrofishing samples are indicative of healthy populations with a good chance at catching a quality fish and good numbers of each of these species. Monitoring over the years has detected Smallmouth Bass up to 20" with most fish in the 10-14" range; however, anglers often report catches over 20". Spotted Bass are abundant but are typically less than 10" long. We have seen fish of all size classes suggesting strong annual recruitment and good fishing for years to come. The creel limit for Largemouth, Smallmouth and Spotted Bass is 5 per day in combination with no length restrictions. The creel limit for Rock Bass is 20 per day with no length restrictions.

Several rivers across Middle Tennessee can provide anglers excellent catfishing. However, the Duck River provides probably the best opportunities to all stripes of catfishermen. TWRA fisheries biologists sample river catfish by electrofishing to keep tabs on the populations. Across several middle Tennessee streams, biologists observed about 29 channel catfish/hour at an average length of 13 inches. The channel catfish looked great throughout middle Tennessee, but the Duck River was a certain stand out. The Duck needs to be split into four major sections to account for changes in river characteristics from the underlying geology and the addition of tributaries regarding catfish abundance and size structure. Only one catfish greater than 34 inches in length may be harvested per day with no creel limit for catfish 34 inches and less.

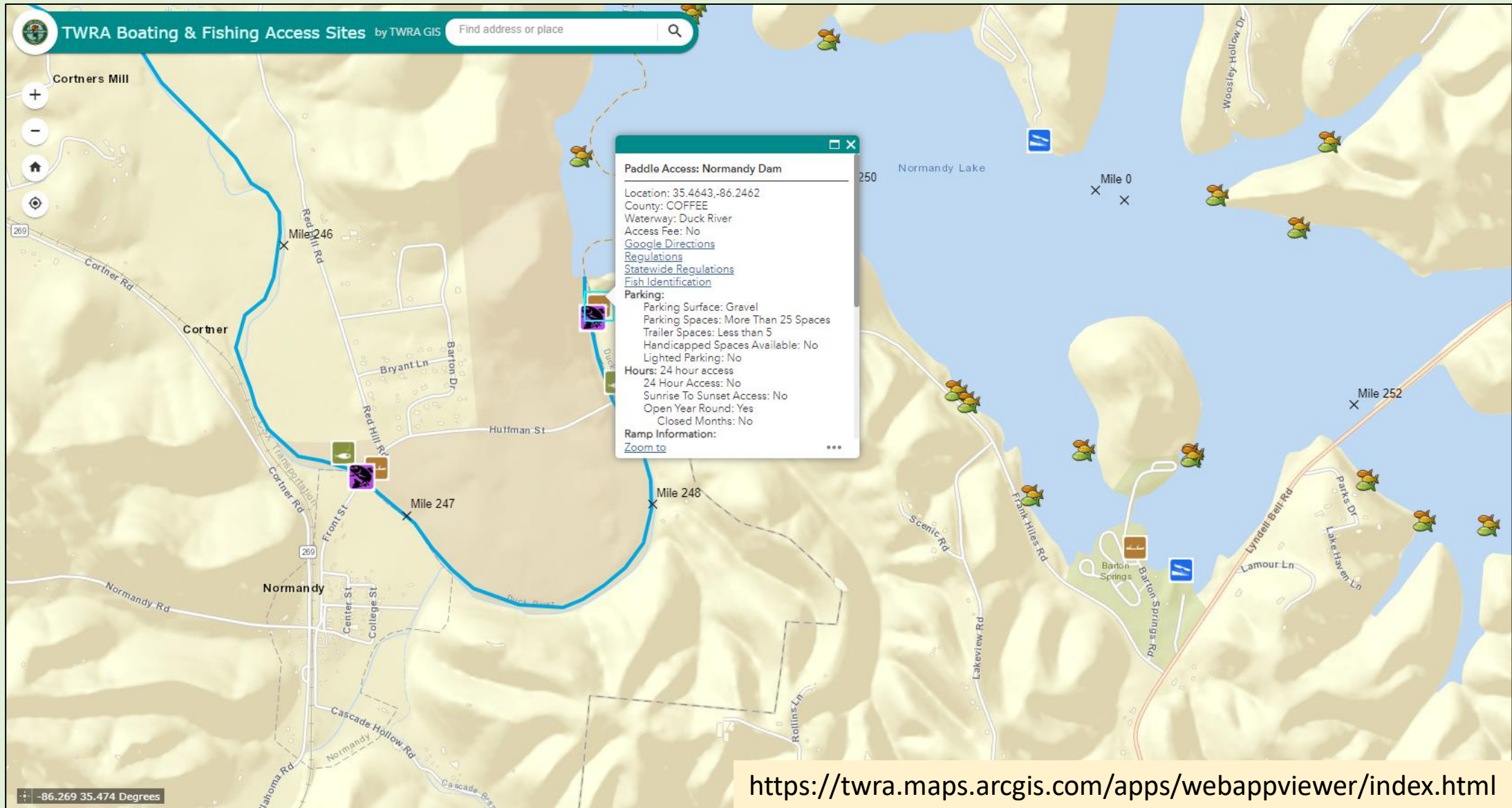
A favorite bass fishing spot is the upper section of the Duck River that cascades through Old Stone Fort State Archaeological Park. Old Stone Fort State Archaeological Park, located in Manchester, TN, is a prehistoric Native American structure bordered by the Duck and Little Duck Rivers. The Duck River forms the northwestern boundary and the Little Duck River forms the southeastern boundary. As the Duck and Little Duck Rivers approach their convergence, they drop rapidly in elevation and have cut relatively deep gorges around the peninsula upon which the ancient structure is located. Both gorges are highlighted by a series of substantial waterfalls with deep, limestone pools and repeats of runs and short pools that are great for fishing.

<https://www.tn.gov/twra/fishing/where-to-fish.html>

<https://www.tn.gov/content/tn/twra/fishing/where-to-fish/middle-tennessee-r2/duck-river.html>



TWRA Boating and Fishing Access Map





Questions?