

Fagaceae - beech family

Quercus alba

white oak



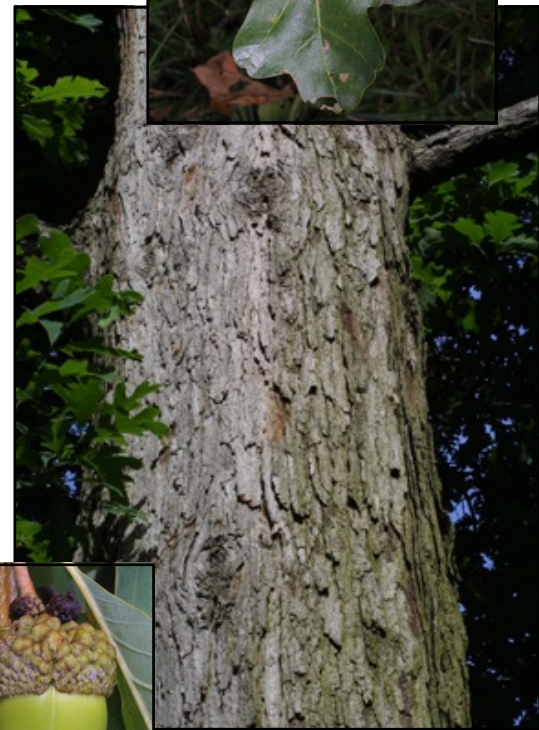
Sight ID characteristics

Vegetative Features:

- **Leaf:** simple, alternate, deciduous, 4-9" long, pinnately 7-9 lobed, alternate, deciduous.
- **Twig:** red-brown to gray, glabrous; buds small, globose, clustered at end of twig.
- **Bark:** gray and variably fissured with conspicuous exfoliating scales on older trees.

Reproductive Features:

- Acorns paired or solitary, 3/8-1 1/4" long and ovoid-oblong, involucre cup bowl shaped, covers 1/4 of fruit, with thickened warty scales – involucre detaches at maturity.



NOTES AND SKETCHES

Fagaceae - beech family

Quercus garryana

Oregon white oak



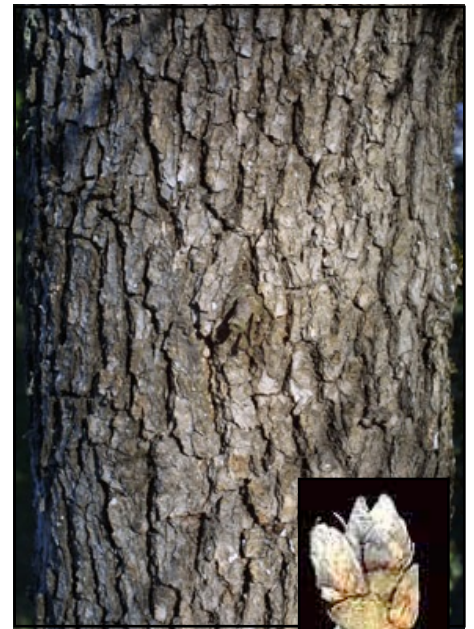
Sight ID characteristics

Vegetative Features:

- **Leaf:** simple, alternate, deciduous, 3-6" long, pinnately 5-7 lobed, glabrous and dark green above, orange-brown pubescence below.
- **Twig:** stout, pubescent early, becoming smooth, reddish brown to gray; buds densely hairy, clustered.
- **Bark:** thin, light gray to gray-brown, shallow irregular furrows separating short, broad ridges.

Reproductive Features:

- Acorn 1-1 1/4" long, ovoid to obovoid, light brown with a shallow pubescent involucre cup.



NOTES AND SKETCHES

Fagaceae - beech family

Quercus rubra

northern red oak



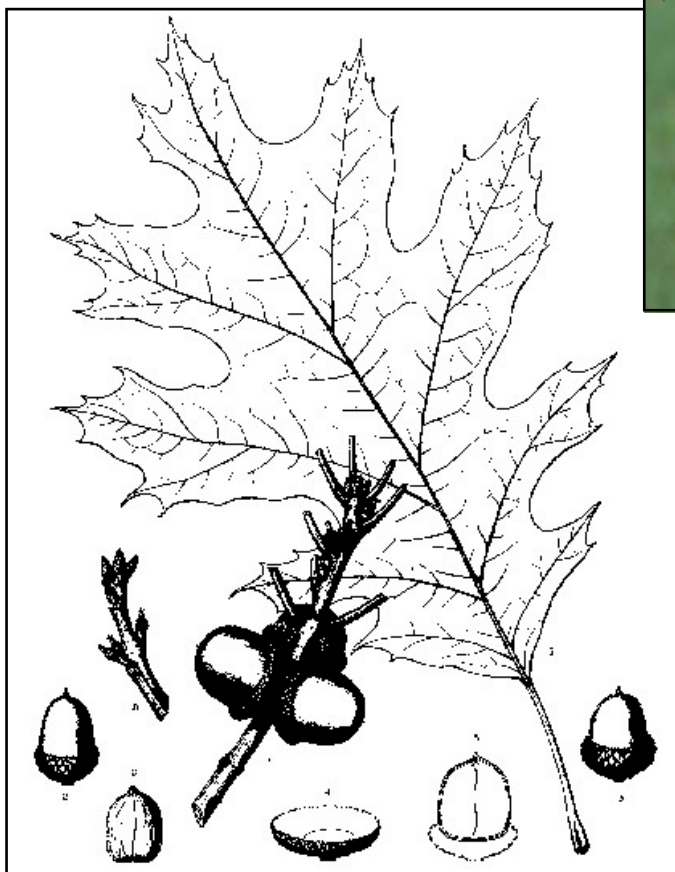
Sight ID characteristics

Vegetative Features:

- **Leaf:** simple, alternate, deciduous, 4-9" long, pinnately 7-11 lobed, sinuses extend 1/3 - 1/2 way to midvein, lobes bristle-tipped.
- **Twig:** stout, red-brown, glabrous; buds conical, clustered, scales mostly glabrous.
- **Bark:** brown to black and broken into flat ridges by shallow fissures on mature trees.

Reproductive Features:

- Acorns solitary or paired, 5/8-11/8" long, involucre cup thick, saucer-like with dark tipped pubescent scales.



NOTES AND SKETCHES

Fagaceae - beech family

Quercus kelloggii

California black oak



Sight ID characteristics

Vegetative Features:

- **Leaf:** simple, alternate, deciduous, 3-8" long, pinnately 5-7 lobed, dark green above, paler and pubescent below, each lobe with 3 bristled teeth.
- **Twig:** reddish brown, ridged, glabrous or minutely pubescent; buds large, pointed, clustered at the ends of the twigs.
- **Bark:** gray-black, deeply furrowed.

Reproductive Features:

- Acorns oblong-elliptical, 1-1 1/2" long, reddish brown, with deep involucre cups covering ~1/2 of nut.



NOTES AND SKETCHES

Fagaceae - beech family

Fagus grandifolia

American beech



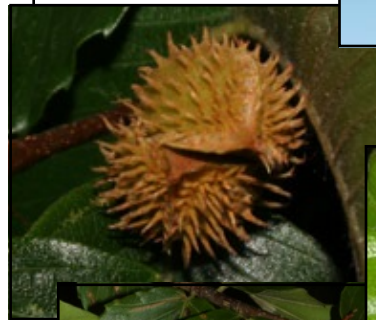
Sight ID characteristics

Vegetative Features:

- **Leaf:** simple, alternate, deciduous, 2-6" long, elliptical to oblong-ovate, serrate margin, 9-14 pairs of secondary veins, 3/4-1 3/4" long strap-like stipules; glabrous above, but has tufts of hairs below in vein axils.
- **Twig:** slender, zigzag, light brown; buds 3/4" long, light brown, and slender, cigar-shaped.
- **Bark:** smooth and blue-gray.

Reproductive Features:

- Male flowers in heads; female flowers in 2-4 flowered clusters
- Fruits are 2 triangular nuts enclosed in a leathery, spiny involucre, dehisces along 4 sutures, ~3/4" long.



NOTES AND SKETCHES

Fagaceae - beech family

Fagus sylvatica

European beech

ORNAMENTAL
many cultivars

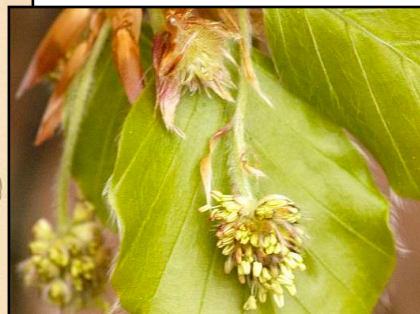
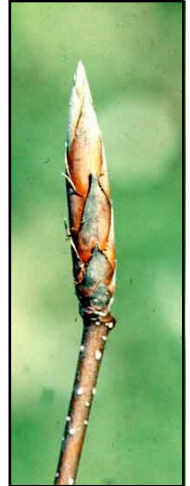
Sight ID characteristics

Vegetative Features:

- **Leaf:** simple, alternate, deciduous, 2-6" long, elliptical to oblong-ovate, crenate margin, 5-9 pairs of secondary veins, strap-like stipules, glabrous above, pubescent along veins below.
- **Twig:** slender, zigzag, light brown; buds 3/4" - 1" long, light brown, often pubescent, slender, cigar-shaped.
- **Bark:** smooth and blue-gray, typically darker than *Fagus grandifolia*.

Reproductive Features:

- Male flowers in heads; female flowers in 2-4 flowered clusters.
- Fruits are 2 triangular nuts enclosed in a leathery, spiny involucre, dehisces along 4 sutures ca. 3/4" long; spines softer than *Fagus grandifolia*.



NOTES AND SKETCHES

Fagaceae - beech family

Castanea dentata

American chestnut



Sight ID characteristics

Vegetative Features:

- **Leaf:** simple, alternate, deciduous, lanceolate, 3"-13" long, conspicuously serrate with +/- hooked teeth.
- **Twig:** slender, zigzag, light brown; buds 3/4" - 1" long, light brown, often pubescent, slender, cigar-shaped.
- **Bark:** brown, smooth when young, becoming furrowed.

Reproductive Features:

- Male flowers in long catkins, appearing in late spring when leaves are fully grown; female flowers in clusters of 2-3.
- Fruit is a nut in spine-covered involucre bur, 2-3 nuts/bur.



NOTES AND SKETCHES