

Some Aspects of Feeding Ecology of the Lesser Sand Plover *Charadrius mongolus* in Three Different Zones in the Kadalundy Estuary, Kerala, South India

K.M. AARIF

Department of Zoology, Mananthavady Campus, Kannur University, Waynad District, Kerala, South INDIA.
Email: achuarif@gmail.com

Received 24 October 2009; accepted 12 December 2009

Abstract: The study on feeding ecology of the Lesser Sand Plover (LSP) at Kadalundy estuary from July 2007 to December 2008, revealed that there were 13 species of crustaceans and 16 species of polychaete worms identified in the study area of which all identified small crab species (4 species) and polychaete worms (4 species) were consumed by LSPs. The highest number of crustacean species was found in mangroves (11 species). In contrast the highest species number of polychaete worms (13 species) was seen in the mudflats while no polychaete worm was identified in the sandy beds. Of the Crustaceans, *Sesarma quadrata* and *Ocyropa* sp. occurred in all the habitats. Sampling polychaete worms undertaken once a month showed that the number peaked at 39 in December 2008 in mudflats. Using direct observations once a week, the number of feeding birds was at its highest in December and January. Pearson correlation test showed significant relationship between the number of polychaete worms and feeding LSPs both at mudflats and mangroves ($p < 0.05$) and the Scheffe univariate test (ANOVA) showed significant differences between the three habitat zones ($p < 0.01$). The highest number of average total pecks at prey was seen at mudflats (82.1 in the morning and 128.0 in the afternoon). Out of 128 pecks, 61.6 were for crustaceans and 12.9 for polychaete worms.

Keywords: Crabs, Kadalundy estuary, Lesser Sand Plover, Polychaete worm.

INTRODUCTION

The diet of shorebirds consists of crustaceans, polychaete worms, insect larvae, aquatic insects, etc. (Smith 1991). Shorebirds detect prey by visual and tactile sensory mechanism exhibiting a wide range of feeding styles such as pecking, probing, stabbing, sweeping, and ploughing (Ntiamoa-Baidu *et al.* 1998). Plovers feed in the highly characteristic stop-run-peck manner, detecting prey visually rather than by touch (Pienkowski 1981, 1983).

Little is known about food and feeding ecology of the Lesser Sand Plover *Charadrius mongolus* (LSP hereafter), even in the Western Palearctic (Cramp & Simmons 1983, Monke & Seeling 2009). The breeding diet of this species includes many beetles, weevils, fly larvae, stalk worms and crabs. During the non-breeding season this species takes insects, crustaceans (such as crabs and amphipods), molluscs (particularly bivalves) and polychaete worms (del Hoyo *et al.* 1996 in BirdLife International 2009). The LSP forages either individually or in

scattered flocks on wet intertidal flats, usually away from the water's edge (Smith 1991). They prefer to forage on tidal mudflats, particularly in the soft mud between the tides. But they may also forage on drier mud banks. They are rarely found far inland (Tan 2001). The present study was undertaken to determine the possible prey species and foraging pattern of this species in Kadalundy estuary in order to conserve its prey species and study area.

METHODS

The Kadalundy estuary, the confluence of Kadalundy River with the Arabian Sea in the northern Malabar coast, is one of the major wintering grounds for shorebirds and seabirds in Kerala, India. Kadalundy River is one among the 41 west flowing rivers of Kerala state. Twenty of the rivers flow directly into Lakshadweep Sea forming estuaries while the rest empty into backwaters (Sashikumar & Palot 1996). The Kadalundy River at its drainage point forms the

Kadalundy estuary that drains into the Arabian Sea. This estuary is located in Tirur Taluk of Malappuram district of Kerala and comes under the Vallikunnu Panchayat (14°49'36" & 11°8'28"N and 75°49'36" & 75°51'20"E). Three square kilometres of this estuary is surrounded by hillocks. It was declared as a community wetland reserve area in 2008. On the western side of the railway track, about 8 hectares of mudflats are exposed during low tide when the water level between the busy railway line and the sea mouth recedes, which attracts many birds to the wetland. *Avicennia officinalis*, *A.marina*, *Rhizophora mucronata*, *Kandelia candel*, *Brugeria cylindrica*, *Acanthus ilicifolius* and *Exocoecaria agallocha* are the major mangrove species found in this wetland (Radhakrishnan *etal.*2006).

This study was conducted at Kadalundy estuary during an 18-month period between July 2007 and December 2008. The study area was visited once a week. The study area was divided into three scanning sectors (mudflats, mangrove and sandy zone). The mudflats, mangroves and sandy areas were 4.05 ha, 1.21 ha and 0.20 ha, respectively but the area selected for observations was mainly on the basis of concentration of migratory birds for feeding, preening and resting activities, and covered about 1.21 ha of mudflats, 0.61 ha of mangroves and 0.20 ha of sandy areas.

Bird counts were taken by both the direct count method and the block count method (Howes & Bakewell 1989) with a binocular (10×50).

Foraging behaviour was studied one day a week. On each sampling day two visits to the three habitats were undertaken starting 6:00 and 15:00 hours. On each visit, five minutes of observation and five minutes of break time were spent. Eight samples of each habitat were taken per month. Total monthly observation time can hence be calculated as:

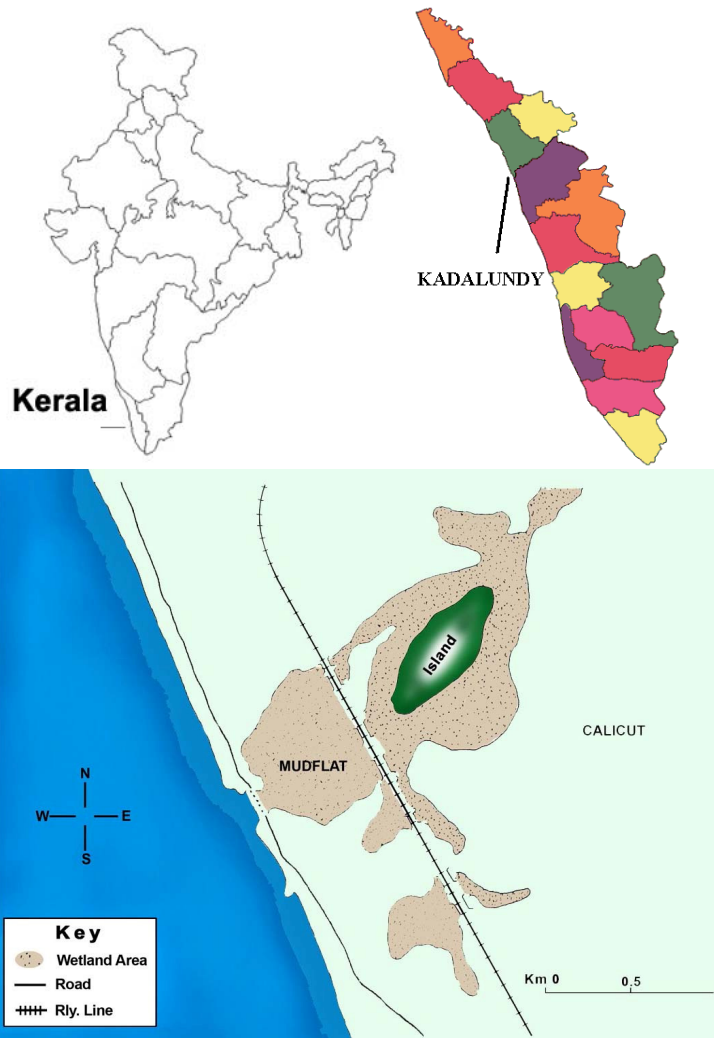


Figure 1. Schematic map of the study area at Kadalundy Estuary.

Sampling days per month × samples per day × number of habitats × observation time: $4 \times 2 \times 5 \times 3 = 120$ minutes/month.

In the field, feeding rate was calculated by counting number of successful pecks for capturing polychaete worms and crustaceans (modified after Khomenko 2003). Photographs were taken of prey when caught by the birds. Statistical analyses were done using the SPSS 16 program.

During each visit the temperature of air and water was recorded early in the morning (06:00 am) and during afternoon (03:30 pm) using a digital thermometer. Salinity of water was measured once a month by using Digital Salinity Meter (Basic Con / TDS / Salinity - Orion company, 115 A+ Thermo Electron Corporation) during the course of the mud sampling work.

Once a month, on low tide, five soil samples were collected from each habitat, using a 10cm-diameter metal cylinder that was plunged to a depth of 15 cm into the substrate. Samples were taken close to observation sites for foraging behaviour and chosen where there was a higher concentration of Plover excretions. The mud samples collected were washed and filtered through a sieve with 0.5 mm mesh. All organisms obtained were sorted to order and transferred to separate bottles containing 1% formalin (Wei & Chen 1991). The specimens and their photographs were identified with the help of experts. All the specimens are deposited in the General Zoology Museum at the University of Calicut, Kerala.

RESULTS

One of the attractions of Kadalundy estuary is the Lesser Sand Plover (LSP), which is also the most abundant of the shorebird species especially during post-monsoon season (Fig. 2). Large congregations of actively feeding LSPs were found in the mudflats as well as near mangroves. LSPs were usually seen feeding in the shallow waters of mudflats along with Bartailed Godwit *Limosa lapponica*, Whimbrel *Numenius phaeopus*, Little Stint *Calidris minuta*, Terek Sandpiper *Xenus cinereus*, Kentish Plover *Charadrius alexandrinus*, Greater Sand Plover *Charadrius leschenaultii*, Sanderling *Calidris alba*, Pacific Golden Plover *Pluvialis fulva*, Common Redshank *Tringa totanus*, Common Greenshank *Tringa nebularia*, Curlew Sandpiper *Calidris ferruginea*, Ruddy Turnstone *Arenaria interpres* and Black-winged Stilt *Himantopus himantopus*.

The invertebrate fauna in the Kadalundy Estuary is dominated mainly by polychaete worms and crustaceans. A total of 16 species of polychaete worms and 13 species of crustaceans were identified in the three different zones of the study area (Table 1). The highest number of crustacean species was found in mangroves (11 species) followed by mudflats (9 species) and the lowest in the sandy habitat (5 species). Of the crustaceans, *Sesarma quadrata* and *Ocyropa* sp. occurred in all the habitats. In contrast the highest species number of polychaete worms was recorded in the mudflats (13 polychaete species) followed by mangroves

Table 1. Occurrence of crabs and polychaete worms in the Kadalundy Estuary during August 2007 to December 2008. += occurred, -= not occurred.

Species	Mudflats	Mangroves	Sandy
CRUSTACEAN			
Small crabs			
<i>Sesarma quadrata</i>	+	+	+
<i>Uca annulipes</i>	-	+	+
<i>Dotilla myctiroides</i>	+	+	-
<i>Dotilla malabaricus</i>	+	+	-
<i>Metapograpus messor</i>	-	+	-
<i>Ocyropa</i> sp.	+	+	+
Large crabs			
<i>Uca marionis</i>	-	-	+
<i>Metapograpus maculatus</i>	-	-	+
Prawns			
<i>Penaeus indicus</i>	+	+	-
<i>Penaeus canaliculatus</i>	+	+	-
<i>Metapenaeus monoceros</i>	+	+	-
<i>Metapenaeus dobsoni</i>	+	+	-
<i>Macrobrachium rosenbergii</i>	+	+	-
TOTAL crustaceans	9	11	5
POLYCHAETE WORMS			
<i>Perinereis cavifrons</i>	+	-	-
<i>Perinereis nuntia</i>	+	-	-
<i>Perinereis vancouverica</i>	+	-	-
<i>Nereis chilikensis</i>	+	-	-
<i>Nereis capensis</i>	+	-	-
<i>Nereis cricognatha</i>	+	-	-
<i>Dendronereis aestuarina</i>	+	+	-
<i>Dendronereis arborifera</i>	+	+	-
<i>Ancistrosyllis constitrica</i>	+	+	-
<i>Marphysa gravelyi</i>	-	+	-
<i>Marphysa macintoshi</i>	-	+	-
<i>Marphysa stagulum</i>	-	+	-
<i>Glycera alba</i>	+	+	-
<i>Glycera convoluta</i>	+	+	-
<i>Glycera longipinnis</i>	+	+	-
<i>Paraheteromastus tenuis</i>	+	+	-
Total Polychaete worms	13	10	0

(10 polychaete species), while no polychaete worm was identified in the sandy beds. Of the polychaete worms sampled, *Dendronereis aestuarina*, *D. arborifera*, *Ancistrosyllis constitrica*, *Glycera alba*, *G. convoluta*, *G. longipinnis* and *Paraheteromastus tenuis* were found both in the mudflats and mangroves.

Identified invertebrate prey in the diet of the LSP were small size crustacean species (namely *Dotilla malabaricus*, *D. myctiroides*, *Uca annulipes* and *Sesarma quadrata*) and polychaete worms (namely *Marphysa gravelyi*, *Nereis chilikensis*, *N. capensis* and *Perinereis cavifrons*). However the number of polychaete worms had fluctuated over the study period with an increase in October and a peak in December in mudflats. This number then decreases steadily by May (Table 2). This trend was similar to the number of feeding LSPs at both air temperatures measured (Table 3).

Using direct observations, the number of LSPs feeding was lowest in May and highest in December and January (Figs. 2–4). Between December and February, LSPs showed intensive feeding on mudflats and near mangroves. The mornings appeared to be the preferred feeding time (coincides mostly with lower air temperature). The Scheffe univariate test (one-way ANOVA) showed significant difference between the Number of polychaete worms in the different study zones ($p < 0.01$). Pearson correlation test showed significant relationship between the number of polychaete worms and feeding LSPs both at mudflats and mangroves (for mudflats, $r = 0.697$ at minimum temperature ($p < 0.01$) and $r = 0.469$ at maximum temperature ($p < 0.05$); for mangroves, $r = 0.911$ at minimum temperature and $r = 0.592$ at maximum temperature ($p < 0.01$ for both). There was also a significant relationship between the number of polychaetes and the salinity of water ($r = 0.716$, $N = 18$, $p < 0.01$). However no significant relationship could be found between polychaete numbers and water temperature ($r = 0.232$, $N = 18$, $p > 0.05$).

Although all the three habitats of mudflats, mangroves and sand flats form the feeding grounds for LSPs, the highest number of peck at prey was seen at mudflats (82.1 in the morning and 128.0 in the afternoon; Fig. 3). The mangrove area was as the second preferred feeding ground with average peck numbers of 54.4 in the morning and 86.4 in the afternoon, respectively (Table 4).

Regarding the number of pecks at crabs, in mudflats there was 61.6 pecks in the afternoon and 37.2 pecks in the morning whereas in mangroves, 26.8 pecks in the morning and 36.9 pecks in the afternoon (Table 4). Also a similar pattern was found for peck numbers at polychaete worms, ranging from 7.8 in the morning and 12.9 at afternoon in mudflats, and similarly 6.0 pecks in the morning and 10.8 pecks in the afternoon in mangroves.

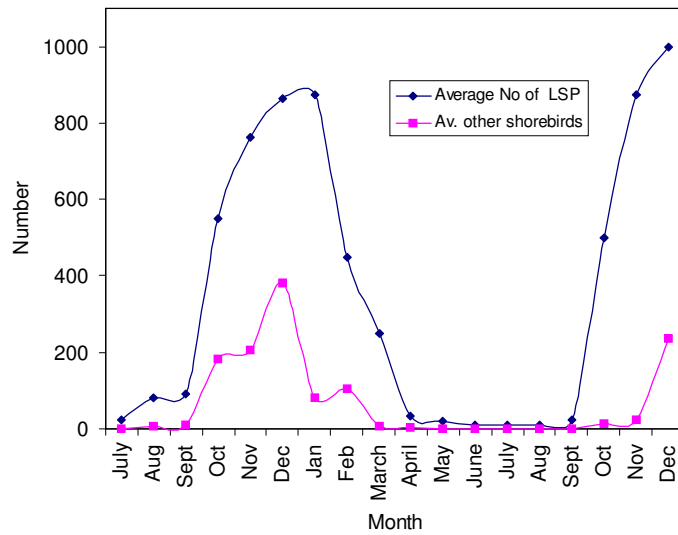


Figure 2. Relative abundance of LSP against other migratory shorebirds at Kadalundy estuary (July 2007 – Dec 2008).

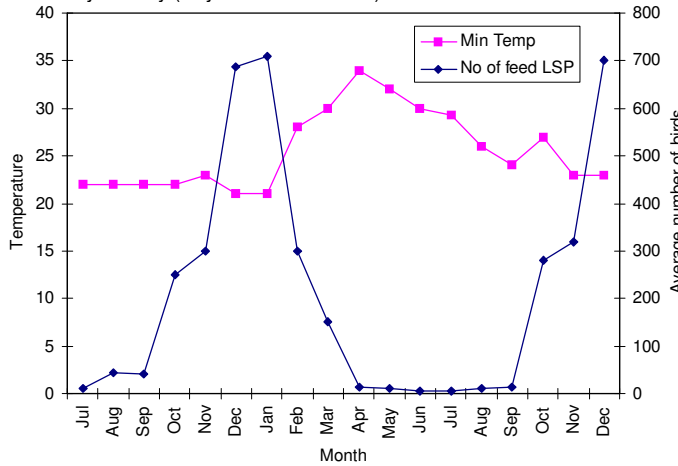


Figure 3. Number of feeding birds (through direct observation and block observation) at minimum temperature at Kadalundy estuary once a week and two times per day in the mornings between July 2007 and December 2008.

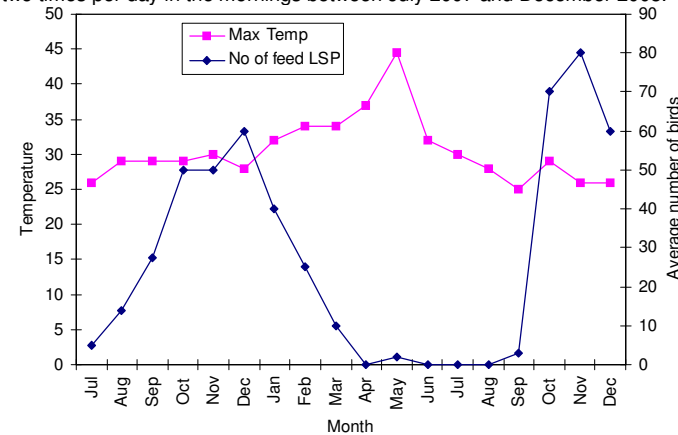


Figure 4. Number of birds at maximum temperature at Kadalundy Estuary between July 2007 and December 2008.

Table 2. Number of polychaete worms obtained once a month in the different study zones from July 2007 to December 2008.

Months	Mudflats	Mangroves	Sandy	Total no. of polychaetes
July 07	1	1	0	2
Aug 07	1	1	0	2
Sep 07	2	4	0	6
Oct 07	12	6	0	18
Nov 07	16	13	0	32
Dec 07	32	26	0	58
Jan 08	31	22	0	53
Feb 08	24	18	0	42
Mar 08	20	8	0	28
Apr 08	14	18	0	32
May 08	10	16	0	26
Jun 08	2	3	0	5
July 08	4	3	0	7
Aug 08	0	5	0	5
Sep 08	6	2	0	8
Oct 08	17	11	0	28
Nov 08	13	15	0	28
Dec 08	39	12	0	51

Table 3. Environmental parameters once a month in the different study zones from July 2007 to December 2008.

Months	Salinity (ppt)	Water Temp. (°C)	Min. air temp.	Max. air temp.	No. of feeding LSPs at min. air temp.	No. of feeding LSPs at max. air temp.
July 07	1.23	28.7	22	26	10	5
Aug 07	1.05	29.3	22	29	45	14
Sep 07	0.87	28.4	22	29	40	27
Oct 07	1.78	29.3	22	29	250	50
Nov 07	16.58	30	23	30	300	50
Dec 07	17.96	30	21	28	687	60
Jan 08	27.85	30.2	21	32	710	40
Feb 08	28.64	32.2	28	34	300	25
Mar 08	30.62	34.1	30	34	150	10
Apr 08	32.45	35.1	34	37	12	0
May 08	34.45	38	32	44.4	10	2
Jun 08	1.87	30	30	32	5	0
July 08	1.23	29	29.3	30	5	0
Aug 08	1.22	29	26	28	10	0
Sep 08	0.86	28	24	25	15	3
Oct 08	1.72	28	27	29	280	70
Nov 08	17.33	29	23	26	320	80
Dec 08	19.44	30	23	26	700	60

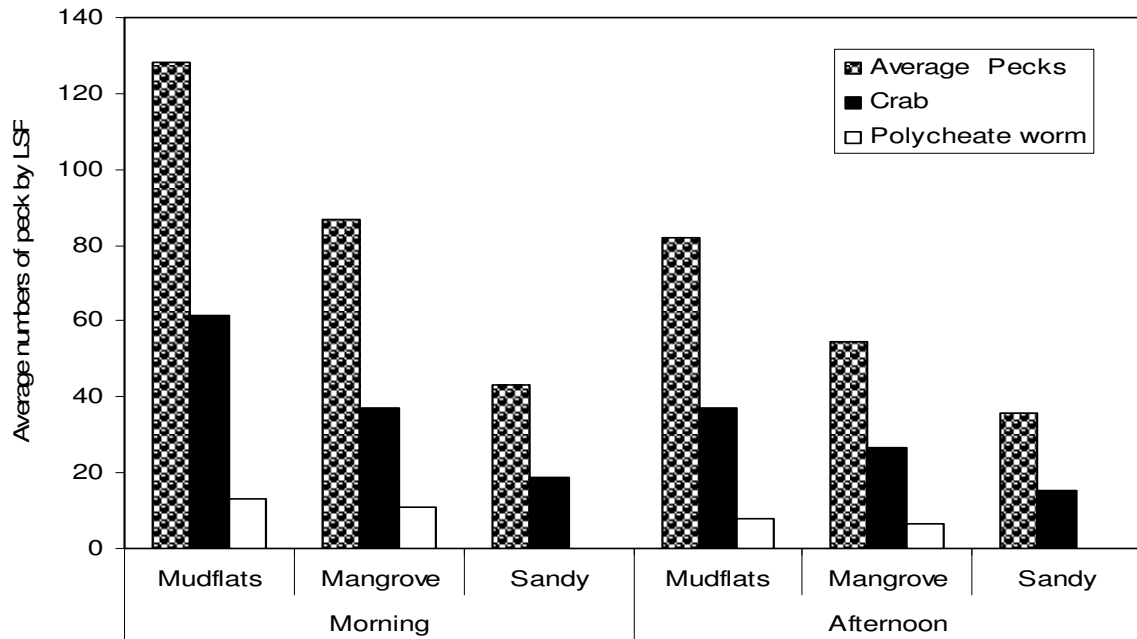


Figure 5. Comparison of average number of pecks made by LSP between the mornings (06:00 am) and afternoons (03:30 pm) in various habitats

Table 4. Average peck number at two main invertebrate taxa in field observations in the three different habitats.

MONTHS	MANGROVE			MUDFLAT			SANDY			TOTAL		
	Average total pecks	Average no. of crabs consumed by LSP	Average no. of polychaete worms consumed by LSP	Average total pecks	Average no. of crabs consumed by LSP	Average no. of polychaete worms consumed by LSP	Average total pecks	Average no. of crabs consumed by LSP	Average no. of polychaete worms consumed by LSP	Average total pecks	Average no. of crabs consumed by LSP	Average no. of polychaete worms consumed by LSP
Morning (per 5 minutes)												
July 07	70.8	31.3	7	107.8	37.3	10.75	53.7	17.5	0	232.3	86.1	17.7
Aug 07	82.3	29.5	2.5	72	30.5	5	47	13	0	201.3	73	7.5
Sep 07	66	33	6.75	119.3	50.5	9.5	43.7	20	0	229	103.5	16.2
Oct 07	68	36	7.5	120	52.5	8.5	40	20	0	228	108.5	16
Nov 07	70	38	7.5	120	60.5	8.5	40	10	0	230	108.5	16
Dec 07	100	62	20	150	76	15	70	40	0	320	178	35
Jan 08	160	85	10	165	80	15	110	60	0	435	225	25
Feb 08	70	20	10	160	90	30	40	10	0	270	120	40
Mar 08	15	2	2	50	10	2	10	2	0	75	14	4
Apr 08	5	2	1	5	2	1	5	1	0	15	5	2
May 08	5	2	1	10	5	1	5	2	0	20	9	2
Jun 08	5	1	0	5	1	0	5	1	0	15	3	0
July 08	10	3	0	10	3	0	15	5	0	35	11	0
Aug 08	5	1	0	5	1	0	5	1	0	15	3	0
Sep 08	10	3	4	19	5	2	4	2	0	33	10	6
Oct 08	68	36	8	130	55	9	40	20	0	238	111	17
Nov 08	70	38	7.5	100	60	8	40	10	0	210	108	15.5
Dec 08	100	60	20	130	50	15	70	40	0	300	150	35
Monthly Average	54.5	26.8	6.4	82.1	37.2	7.8	35.7	15.3	0	172.3	79.3	14.2
Afternoon (per 5 minutes)												
July 07	66.8	19.8	2.3	84.3	34.3	6.5	58.5	9.8	0	209.6	63.9	8.8
Aug 07	84.5	29	5.5	95.5	38.8	11	61.8	23	0	241.8	90.8	16.5
Sep 07	111	41.3	9.3	145.5	58	9	49	13.5	0	305.5	112.8	18.3
Oct 07	115	44.5	9.5	160	62.5	9.3	48	40	0	323	147	18.8
Nov 07	160	80	30	165	62	10.5	51	30	0	376	172	40.5
Dec 07	210	96	35	260	160	30	70	30	0	540	286	65
Jan 08	200	100	35	340	185	45	115	53	0	655	338	80
Feb 08	80	30	10	330	180	40	100	10	0	510	220	50
Mar 08	5	1	1	100	30	15	20	8	0	125	39	16
Apr 08	10	2	1	10	2	2	5	1	0	25	5	3
May 08	10	2	0	10	3	1	5	1	0	25	6	1
Jun 08	10	5	0	5	1	0	5	1	0	20	7	0
July 08	10	2	1	14	4	0	10	5	0	34	11	1
Aug 08	11	4.5	2.5	5	2	0	5	1	0	21	7.5	2.5
Sep 08	100	40	7	10	4	2	12	1.5	0	122	45.5	9
Oct 08	115	44	8	140	60	10	50	40	0	305	144	18
Nov 08	150	80	30	160	52	10.5	50	30	0	360	162	40.5
Dec 08	111.3	43.8	7.5	270	170	30	60	40	0	441.3	253.8	37.5
Monthly Average	86.6	36.9	10.81	128.0	61.6	12.9	43.1	18.8	0	257.7	117.3	23.7



Figure 6. Two of most consumed prey crab species by LSPs at Kadalundy Estuary: *Dotilla myctrioides* (left) and *Dotilla malabaricus* (right).



Figure 7. Deep feeding of LSP at Kadalundy estuary.

DISCUSSION

The main groups of invertebrate fauna at Kadalundy are crustaceans and polychaete worms. These were present mainly in the mudflats and near mangroves, and were preferred habitats for LSP. Polychaete worms were entirely absent in sandy area. This fact might suggest a reason why birds feed less in the sandy zone compared to the other zones. LSPs mainly preferred two species of crabs (*Dotilla myctiroides*, *D. malabaricus* (Fig. 6)) than other species, probably due to their smaller carapace size (less than 8 mm), which agrees with the observations made by Kai Jing *et al.* (2006) during their studies on foraging shorebirds. In winter quarters, LSPs have taken, marine worms, and molluscs whereas in breeding season they fed on beetles, fly larvae, scorpion-fly and some plant seeds (Cramp & Simmons 1983).

LSPs are considered to be surface feeders, *i.e.* penetrating the surface by less than one quarter of the bill length (Kai Jing *et al.* 2006). But in Kadalundy, deep feeding was also observed, *i.e.* birds were seen to plunge their entire beak into the muddy substrate (Fig. 7). In LSPs, pecking and probing are the main methods for visual and tactile foraging respectively. A similar observation was made by Baker & Baker (1973) during their study on shorebirds especially plovers. LSPs walked slower when feeding on worms, and only made

quick short runs when feeding on crabs and other prey species, which is similar to what has been observed in Common Redshank (Speakman & Bryant 1993). But Marchant & Higgins (1993) have made no distinction in feeding behaviour and just mentioned that plovers always make short, quick runs, with abrupt stops to lunge at the ground or to look for prey.

In coastal areas, the feeding cycle of shorebirds is highly influenced by tidal cycles. The amount of available feeding space fluctuates with tidal rhythm. When the mudflats are exposed to feeding during the low tide, the feeding rate is high which then gradually gets reduced, probably due to the fluctuation of prey species. During the hot hours of the day, most of the LSPs were seen resting on the sandy beds. Uthaman & Namasivayan (1991) have made similar observations on gulls and terns in Kadalundy. The feeding behavior of LSP in our study may be due to the decrease in the number of prey species at the surface when they bury due to moving to deeper areas at higher temperatures. Large crab species, such as *Metapograpsus maculatus* (*c.* 21 mm carapace length) and *Uca marionis* found in the sandy area, were not fed upon by LSP, but curlew species were seen feeding on them. This observation is supported by Kai Jing *et al.* (2006). LSPs form huge congregations near mangroves frequently, even during high tide in the post- monsoon season, perhaps due to rich availability of crab species *viz.* *Metapograpsus messor* (seen only in mangrove habitat) and *S. quadrata*.

The preference for mudflats and mangroves in the study area by LSP may be due to prey detectability as well. Prey species can be easily detected there than in harder sandier substrates. Mouritsen & Jensen (1992) demonstrated that sediment penetrability improves probability of detecting buried prey in Dunlins *Calidris alpina*.

CONCLUSION

The results have revealed some of the possible prey species and the foraging strategies of the Lesser Sand Plover, which may help in better management of the preys in order to maintain

Kadalundy estuary as a stopover site for migrating and wintering shorebird species. Conservation of mudflats also helps to conserve the all prey species which indirectly conserve all migratory shorebirds. Human disturbance, sewage disposal, illegal sand mining, House Crow disturbance, coastal Highway Bridge, chasing by Jackals and Brahminy Kites are major threats for migratory shorebirds. Of these, illegal sand mining is the main threat for prey species of the LSP and other shorebirds. As Kadalundy is an important stopover for birds migrating through the west coast of India (Uthaman & Namashivayam 1991), all these problems are threatening factors for the migratory birds, a situation predicted to worsen in the near future. Waste dumping is the main problem in the mudflats a preferred habitat of LSPs and raising awareness among the locals is solution for this habitat.

Acknowledgements: The author thanks Dr Nasser, Department of Zoology, Calicut University, who made this work much easier by preparing the manuscript, the author also thanks Dr V.S. Kakati, Principal Scientist, CMFRI, Karwar, who helped in the identification of crabs. Again, deepest gratitude is expressed to Dr Sunilkumar, Catholicate College Pathanamthitta, who helped to identify the polychaete worms. The author is also thankful to the two anonymous referees and the editor of *Podoces* for their valuable suggestions and comments to improve this paper.

REFERENCES

- Baker M.C. & Baker A.E.M. 1973. Niche relationships among six species of shorebirds on their wintering and breeding ranges. *Ecol. Monogr.* **43**:193–212.
- BirdLife International. 2009. Species factsheet: *Charadrius mongolus*. Downloaded from <http://www.birdlife.org>
- Cramp S. & Simmons K.E.L. 1983. The Birds of the Western Palearctic, vol. 3. Oxford University Press, Oxford, UK, 913 pp.
- Howes J.G. & Bakewell D. 1989. *Shorebird Studies Manual*. AWB Publication No 55 Kuala Lumpur, 362pp.
- Jing K., Ma Z., Li B., Li J. & Chen J. 2006. Foraging strategies involved in habitat use of Shorebirds at the tidal area of Chongming Dongtan, China. *The Ecological Society of Japan* **22**: 559–570.
- Khomenko S.V. 2003. Feeding ecology of Curlew Sandpiper during spring stopover in the Sivash Bay (Ukraine). *Vestnik Zoologii* **37(2)**: 97–99.
- Marchant S. & Higgins P. (Eds) 1993. *Handbook of Australia, New Zealand and Antarctic Birds Volume 2: Raptors to Lapwing*. Oxford University Press, Melbourne.
- Monke R. & Seeling K.-J. 2009. Some behavioural observations of wintering Lesser *Charadrius mongolus* and Greater *C. leschenaultii* Sand Plovers in Goa, India. *Indian Birds* **4(3)**: 110–111.
- Mouritsen K.N. & Jensen K.T. 1992. Choice of microhabitat in tactile foraging dunlins *Calidris alpina*: the importance of sediment penetrability. *Marine Ecology Progress Series* **85**: 1–8.
- Ntiamo-Baidu Y., Piersma T., Wiersma P., Poot M., Battley P. & Gordon C. 1998. Water depth selection, daily feeding routines and diets of waterbirds in coastal lagoon in Ghana. *Ibis* **140**:89–103.
- Pienkowski M.W. 1981. Differences in habitat requirements and distribution patterns of plovers and sandpipers as investigated by studies of feeding behaviour. *Hoc WRB Feeding Ecology Symp., Gwatt, Switzerland, Sept. 1977. Verh. Orn. Ges. Bayern* **23**: 105–124.
- Pienkowski M.W. 1983. Changes in the foraging pattern of plovers in relation to environmental factors. *Anim. Behav.* **31**: 244–264.
- Radhakrishnan C., Gopi K.C. & Palot M.J. 2006. *Mangroves and their faunal associates in Kerala. Occasional paper No 246. Records of Zoological Survey of India*. Zoological Survey of India, Calicut, Kerala, 81 pp.
- Sashikumar C. & Palot M.J. 1996. Wetlands and waterfowls of Kerala, India – an overview. *In: Birds of wetlands and grasslands*. Rahmani A.R & Ugra G. (Eds.). *Proceedings of the Salim Ali centenary seminar Bombay Natural History Society*, pp. 147–153.
- Smith P. 1991. *The Biology and management of Waders (Suborder Charadrii) in NSW*. NPWS, Hurstville.
- Speakman J.R. & Bryant D.M. 1993. The searching speed of foraging shorebirds: Redshank (*Tringa totanus*) and Oystercatcher (*Haematopus ostralegus*). *The American Naturalist* **142**: 296–319.
- Tan R. 2001. Mangrove and wetland wildlife at Sungei Buloh National Park. http://www.naturia.per.sg/buloh/birds/Charadrius_mongolus.htm
- Uthaman P.K. & Namasivayan L. 1991. The birdlife of Kadalundy Sanctuary. *Proceeding of Kerala Science Congress*, February–March 1991, Kozhikode, pp 37–39.
- Wei C.D. & Chen Y.S. 1991. *Fauna of Zhejiang: Crustacea*. Zhejiang Science and Technology Publishing House, Hangzhou.