

top of the hill



**NEW ZOO SCIENCE MAJOR...
BECAUSE IT'S A JUNGLE OUT THERE!**

Q&A

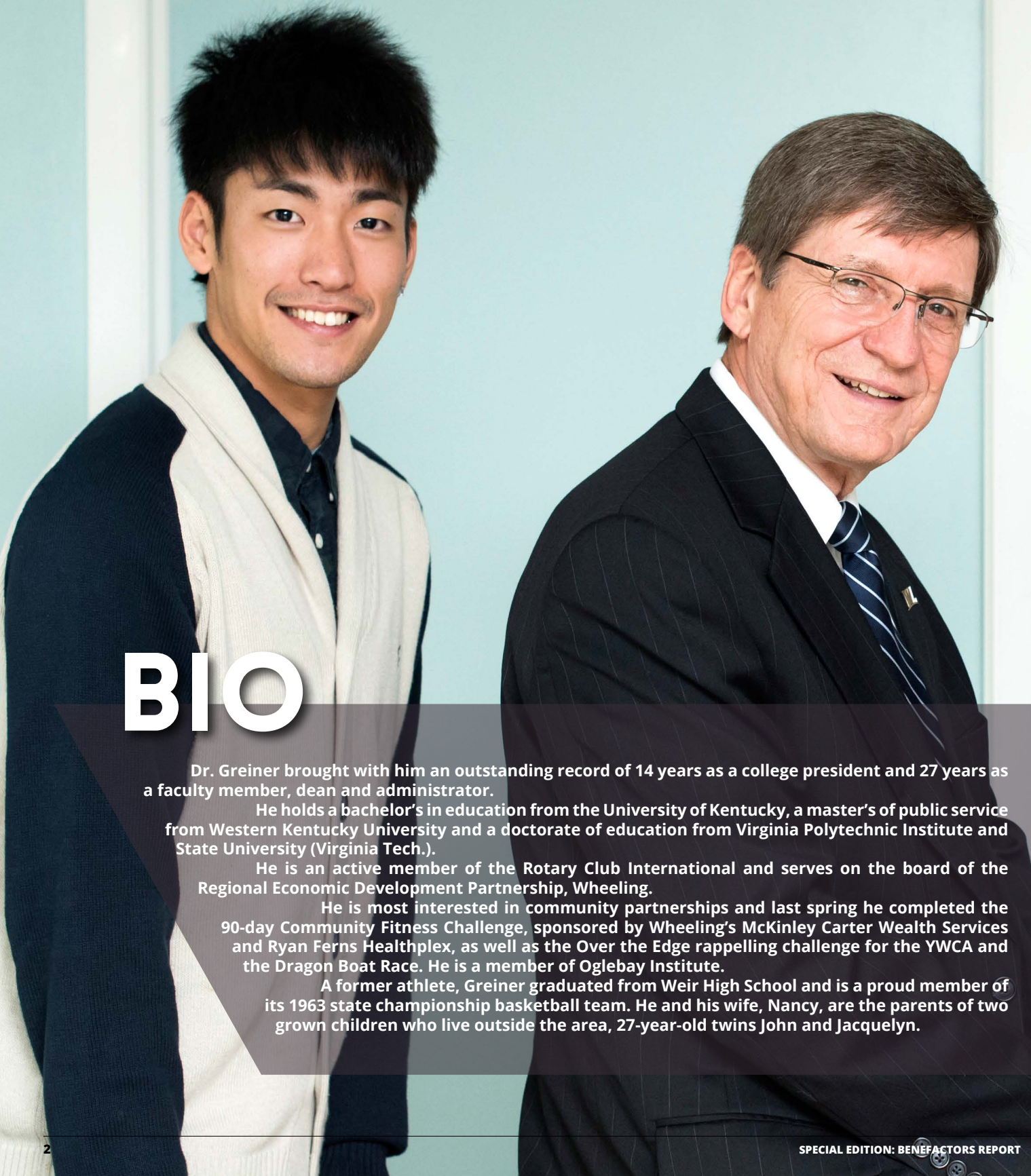
WITH PRESIDENT STEPHEN G. GREINER

West Liberty University's Board of Governors named Dr. Stephen Greiner our 36th President a little over a year ago and he assumed the daily duties of president in January 2016. Since then he's spent countless hours talking with students, alumni, staff, faculty and supporters, as he listens to concerns and shares his vision with the Hilltop.

1

AS A WEIRTON NATIVE WHO SPENT MOST OF HIS PROFESSIONAL CAREER AWAY FROM HOME, TELL US HOW IT FEELS TO MOVE BACK AFTER SO MANY YEARS.

It is exhilarating being back. I didn't really see this opportunity in my career path and returning to the Northern Panhandle is more meaningful than I ever imagined. It's a combination of having an opportunity to lead an outstanding and well respected University, visiting familiar places, getting reacquainted with old friends and making new friends. And the bonus is having brothers and sisters here! (Dr. Greiner has two brothers and one sister, Nick resides in Weirton, W.Va.; John in Toronto, Ohio and Lisa DiCarlo in Mingo Junction, Ohio. His sister Carla Jo is deceased.)



BIO

Dr. Greiner brought with him an outstanding record of 14 years as a college president and 27 years as a faculty member, dean and administrator.

He holds a bachelor's in education from the University of Kentucky, a master's of public service from Western Kentucky University and a doctorate of education from Virginia Polytechnic Institute and State University (Virginia Tech.).

He is an active member of the Rotary Club International and serves on the board of the Regional Economic Development Partnership, Wheeling.

He is most interested in community partnerships and last spring he completed the 90-day Community Fitness Challenge, sponsored by Wheeling's McKinley Carter Wealth Services and Ryan Ferns Healthplex, as well as the Over the Edge rappelling challenge for the YWCA and the Dragon Boat Race. He is a member of Oglebay Institute.

A former athlete, Greiner graduated from Weir High School and is a proud member of its 1963 state championship basketball team. He and his wife, Nancy, are the parents of two grown children who live outside the area, 27-year-old twins John and Jacquelyn.

2

AFTER SPENDING ABOUT A YEAR AT THE HELM OF WEST VIRGINIA'S OLDEST INSTITUTION OF HIGHER EDUCATION, WHAT DO YOU SEE AS THE BIGGEST CHALLENGE FACING THE UNIVERSITY?

Clearly the biggest challenge is the declining financial support from the state of West Virginia and increased dependence on tuition revenue. But there are other challenges too, which include an aging campus infrastructure and increasing demands of technology, among others.



3

HOW DO YOU PLAN TO ADDRESS THESE OBSTACLES?

We must reestablish budget priorities, focus on enrollment management, foster program growth, especially graduate programs, and we will need to consider public-private partnerships when it comes to infrastructure updates and building new facilities, such as student housing.

PHOTO CREDITS - FRONT COVER AND FULL PAGE SPREAD pgs 2-3: REBECCA KIGER MEGUMI MARUTA '17, INTERNATIONAL CLUB PRESIDENT AND JENNA BUGAJ '19, ELEMENTARY EDUCATION

Q&A

CONTINUED



OVER THE EDGE



HOMECOMING DAY ON THE QUAD



DR. GREINER AND WIFE NANCY

PHOTO CREDIT: REBECCA KIGER

4

WHAT IS YOUR MESSAGE TO ALUMNI, DONORS, STUDENTS AND THE ENTIRE CAMPUS COMMUNITY, AS TO INVOLVEMENT AND HOW THEY CAN HELP?

I have been incredibly impressed with the current involvement with alumni and students. WLU is a very special place and I'm reminded of that everyday by alumni, students and donors. That's something we never want to forget. WLU opened so many doors for so many people and they are grateful. It isn't a cliché to say that: WLU is *a window to the world* for our students and alumni. Our students can start here and go anywhere.

5

ON A MORE PERSONAL NOTE, WHAT WORLD LEADER DO YOU MOST ADMIRE?

That's easy — Nelson Mandela, since I had the privilege of working for him once. It was in 1994, right after Mandela took over as president and I was the interim Dean of Education at Old Dominion University that had the world's largest military transition program. I was invited by one of his generals to travel to South Africa and spend a week consulting on a project that involved transitioning military officers into civilian jobs.

6

WHAT'S YOUR FAVORITE THING TO DO FOR RELAXATION?

Travel — when I get a chance.

7

YOUR FAVORITE FOOD?

Serbian food, including Sarma (cabbage rolls), Kupis i Grah, (beans and sauerkraut) and nut breads and rolls.

8

FINALLY, WHAT IS IT THAT INSPIRES YOU IN YOUR WORK?

To interact with students and learn about their thoughts and aspirations is the most inspiring part of my job. I've always taken the approach that to ask students *what's best for students* is the right way to go. Everyday I have the chance to interact with our students, and to me there is no better job in the world!

NEW MAJOR!

CAREER PATH FOR FUTURE ZOO KEEPERS

You might see a sloth, tortoise or hellbender in your classroom if you're enrolled in one of WLU's newest majors, Zoo Science.

"What began about a year ago as a 'wouldn't it be great' discussion has turned into an exciting new academic program at West Liberty University. Shortly after Dr. Joe Greathouse joined the natural science department at WLU, he, Dr. Zac Loughman, and Dr. Karen Kettler began talking about how exciting a collaborative program between West Liberty University and Oglebay Good Zoo could be," explained Dr. Stephen Greiner, University president.

After several months of groundwork and discussion, these ideas were embraced by Dr. Robert Kreisberg, Dean of the College of Sciences, and agreed on by Dr. Greiner and Stephen Hilliard, president and CEO of the Wheeling Park Commission. The team worked together to successfully develop the Bachelor of Science in Biology degree with a zoo science major, one of only four in the country.

The 23 students in the inaugural class are now learning animal care, zoo keeping, and the science behind it.

Classes are conducted at West Liberty University, as well as at the Oglebay Good Zoo and other Association of Zoos and Aquariums (AZA) accredited zoos and aquariums. Students learn from zoo professionals and are exposed to a variety of animal care facilities including small and large zoos and aquariums, conservation centers, nature centers, wildlife rehabilitation centers, and fish hatcheries.

"The learning environment for our students is unlike anywhere else in the country," said Loughman, associate professor of biology and 2014 West Virginia Professor of the Year. "WLU now houses 30 new animals that are zoo science specific to teach the students."

He also maintains an internationally known crayfish research laboratory.

Some of the zoo science career opportunities include a 10-week summer internship between the sophomore and junior year of study at an AZA accredited zoo.

Students also must volunteer in animal labs at the university and, during the junior and senior year of study, they must complete two semesters interning at the Good Zoo.

"Students are currently taking care of the animals under our direction. Everything from enclosure and implementation, to feeding and cleaning," said Loughman.

"This is a unique major and we are very excited to offer it to our biology students. The field of zoo keepers, curators and other zoological professions is growing and West Liberty University's College of Sciences is proud to be a part of it," said Dean Dr. Robert Kreisberg, who leads the College of Sciences.

For complete information on the new zoo science major, please visit westliberty.edu/zoosci or email zoosci@westliberty.edu. Or contact Loughman at 304-336-8923.



WLU STUDENTS FEEDING BABY SLOTH



HILLTOPPERS

BASK IN NATIONAL SPOTLIGHT

The national spotlight shone brightly on West Liberty University student-athletes, teams and coaches during the 2015-16 academic year. From teams making deep NCAA Tournament runs and student-athletes shattering all-time NCAA records to legendary coaches hitting significant milestones, the Hilltoppers made their presence felt on the national scene. Here are just a few snapshots from a banner year for the Black and Gold.

MEN'S BASKETBALL

Coach Jim Crutchfield's men's basketball program won its seventh straight conference championship, spent much of the season ranked No. 1 in the nation and advanced to the NCAA Division II Final Four for the third time in the last four seasons. Crutchfield added to his legend with the best winning percentage of any basketball coach in NCAA history. By the way, The Sporting News ranked us No. 1 again in this year's preseason magazine.

SEGER BONIFANT

Two-time National Player of the Year Seger Bonifant closed out a stellar 4-year career as the leading 3-point shooter in the history of NCAA men's basketball. Bonifant wowed a national TV audience with a 44-point explosion in WLU's heartbreaking 103-102 Final Four loss to top-seeded Lincoln Memorial (Tenn.). It was the most points scored in a national semifinal in 45 years. Now playing professionally in Spain, Bonifant's school career records of 2,289 points and 374 3-pointers may stand for quite a while.

WOMEN'S BASKETBALL

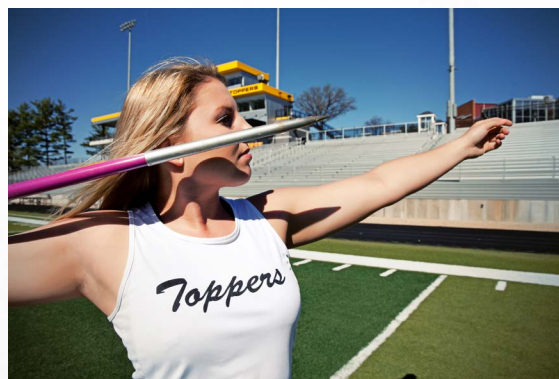
The women's basketball team won its second straight MEC title, set a program record with 29 wins and knocked off defending national champion California (Pa.) during its run to the NCAA Division II "Sweet 16." It was the 14th NCAA Tournament bid for veteran head coach Lynn Ullom, who was honored with the Women's Basketball Coaches Association (WBCA) Victory Award after the season in recognition of his 500th career win.

SENIOR STANDOUTS

It was a storybook season for the Lady Hilltoppers' three senior All-Americans. Kiki Simpson was honored as the MEC Player of the Year after leading the nation in rebounds, field-goal percentage and double-doubles. She's the first MEC player ever with 1,000 points and 1,000 rebounds. Kailee Howe set an NCAA Division II single-season record with 326 assists, becoming the first player ever with back-to-back 300-assist seasons. Liz Flowers won her second straight MEC scoring title and became WLU's third 2,000-point career scorer after averaging an eye-popping 30.3 ppg. in the NCAA Tournament.

ALEXIS MONTES

One year after becoming West Liberty's first NCAA Division II Track and Field All-American, Alexis Montes did it again! Competing in the javelin event at the NCAA Division II Nationals in Bradenton, Fla., Montes obliterated her own school record with a throw of 167 feet, 7 inches. That effort was nearly 9 feet better than her previous best - set at the 2015 national championship meet - and earned the Hilltopper standout a seventh-place finish and NCAA Division II All-America honors for the second straight year.



ACROBATICS AND TUMBLING JOINS SPORTS LINEUP

West Liberty University became the 16th school to add Women's Acrobatics and Tumbling as a varsity sport in the six short years since the National Collegiate Acrobatics and Tumbling Association (NCATA) was established.

The Hilltoppers expect to begin their first season of Acrobatics and Tumbling competition in the spring of 2018 and a nationwide search for the head coach is under way.

"We're very pleased to add Acrobatics and Tumbling to our varsity sports lineup," Dr. Greiner said. "This will open the door of opportunity for many female high school student-athletes to not only continue pursuing their passion at the highest level as a Lady Hilltopper but to use that passion to fuel their pursuit of a college degree."

GRADUATE PROGRAMS GROWING

WLU IS EXPANDING OPTIONS FOR STUDENTS AND PROFESSIONALS
SEEKING ADVANCED DEGREES.

Graduate degrees up and running include the Master of Arts in Education, Master of Science in Physician Assistant Studies, Master of Professional Studies, Master of Science in Criminology (MSC) and online MBA degrees.

Soon the newest graduate program, the Masters of Science in Dental Hygiene, will join the mix.

"We are pleased to move forward with yet another graduate program that is needed in our region. Though we won't be able to welcome our first class in the dental hygiene master's for a while yet, we expect this to be very popular and highly accessible degree, since it will be totally online," said President Stephen Greiner.

The newest online program is being studied by the West Virginia Higher Education Policy Commission and will then go to the Higher Learning Commission for final approval in a process that takes about two years.

Online master's programs are the preferred method of delivery for many students.

"Our MBA is totally online and it's proved to be very successful. We not only filled our first class but added a second section to accommodate 40 students total," said Dr. Michael Turrentine, dean of the Gary E. West College of Business. Turrentine took on the role of dean just this past July and has been with WLU for 17 years.

The MBA offers a choice of two tracks: entrepreneurship or management. Dr. Gregory Chase researched and developed the MBA and Ann Rose is the online instructional specialist for the program.

"This is a challenging program at a reasonable cost and we feel we can compete very well with other programs in the market," Turrentine said. Students also can elect to finish the 30-credit hour program in two years, or finish in one year if they are ambitious.

According to student Amy Whipkey of Wheeling, the MBA offers her a higher level of professional learning and a path to advance

her career. She's worked in the field of higher education for most of her professional life and also is a busy mother, so the online aspect makes it perfect.

Likewise, the new criminology master's is gaining ground.

"We accepted our first cohort of students this fall and, due to demand, opened enrollment up for spring 2017 enrollment as well. The program has received great reviews from current students and has been praised for its rigorous course offerings in advanced research methods, advanced statistical applications, and grant writing. It's going great," said Dr. Keith Bell, associate professor of Criminal Justice.

"The thing I really like about the Master's of Criminal Justice is it's affordable," said Hannah Walters, who finished her undergraduate degree last spring and went right into the program. As the student president of the Criminal Justice Society, she plans on finishing her master's in December 2017.

Walters, who is from Williamstown, W.Va., plans on working with victims of violent crimes in the immediate future but will eventually earn her doctoral degree and become a professor if all goes as planned.

"The master's program is going great. It's challenging but the teachers offer the one-on-one attention that helps you learn and be successful," she said. "I'm so glad WLU has it now."



G-TOP

GENERATIONS HAS COME TO WEST LIBERTY

Generations Restaurant brought its tasty menu to the Hilltop this October as it opened a new restaurant pub, the G-Top, at West Liberty University's Gary E. West Event Center.

G-Top opened just in time for Homecoming and is conveniently located at 260 Roadworthy Drive, just across W.Va. Route 88, and not far from WLU's main gate.

"Students and staff are thrilled with the new gathering spot, serving great food and beverages along with entertainment. We are pleased to work with Mike Duplaga and Generations in this new endeavor," said Dr. Stephen Greiner, WLU president. Mike's son, Michael, a 2014 alumna is managing the place.

"We want to provide our students with the best campus experience possible and G-Top has expanded dining and entertainment options for the entire campus," he said.

Generations is leasing the space from the university and is open Wednesday through Saturday. Offering a full menu, including steak, pasta, salads, appetizers, sandwiches, pizza and a full bar, dining hours are 4 - 10 p.m., Wednesday - Friday and noon - 10 p.m. on Saturdays. The bar remains open till 2 a.m.

You may reach the G-Top by phone at 304-336-4114.



Michael Duplaga and WLU President Dr. Stephen Greiner.

THE CABINS CABINS & NEW HOUSE INCREASE STUDENT OPTIONS

New housing options for students include modern cabins offering privacy, convenience and cozy living. These two or three bedroom cabins are just across the road from the main campus near the Gary E. West Event Center.



"The addition of fully furnished cabins in the woods is very unique to the Hilltop," said President Stephen Greiner. "These are perfect for our students and we are pleased that we can offer them."

Each cabin comes with kitchen, living room and bedroom furniture, plus a washer, dryer and big screen TV in a park-like setting.

The other housing option that is new this year is the addition of a former bed and breakfast that was acquired over the summer and includes four bedrooms now housing students. This comfortable home is situated just outside the main gate at 409 Van Meter Way.

ALUMNI

A YEAR IN PICTURES



West Liberty University Homecoming 2016



NCAA DII Men's Elite Eight



NCAA DII Men's Elite Eight



Alumnus Chris Freeman scores a hole-in-one at Lary Loew Golf Scramble



WLU Homecoming 2016 King and Queen



Alpha Xi Delta Sorority 50th Anniversary



Lary Loew Golf Scramble 2016

See more event photos online: westliberty.edu/alumni/photo-gallery



Florida Chapter Reunion 2016



Chi Omega Sorority 50th Anniversary



Pittsburgh Golf Outing 2016

LETTER FROM THE ALUMNI DIRECTOR



Dear Alumni and Friends,

I am fortunate to serve as your alumni director and I consider what I do a labor of love. Alumni are like an extended family to me and I have had the good fortune of meeting so many wonderful people over my nearly two decades on the hilltop. Engaging alumni in the life of the institution as volunteers, advocates and supporters is a role that I take very seriously.

The Alumni Association fills an important role in helping promote a strong relationship between current and future alumni in support of West Liberty University. By creating and strengthening connections between the institution and its alumni, the Association and University will benefit from the diverse interests, talents, and backgrounds found within the WLU family. The Alumni Association helps cultivate those relationships that ultimately result in external support for the institution, establishes lasting connections with alumni, and strengthens University traditions.

I am dedicated to growing our Association by increasing the number of alumni chapters throughout the country; providing more opportunities for alumni to enjoy; implementing a more robust communications plan including electronic correspondences and social media platforms; and securing private financial support from donors committed to the mission of the institution.

Thank you once again for entrusting me with such an awesome responsibility! I am sincerely grateful!

With Hilltopper Pride,
 Ron Witt '92
 Executive Director of Alumni & Community Relations

The Alumni Association added the names of three distinguished alumni to its Wall of Honor during Homecoming 2016. Andy McKenzie, Dr. Christina Fisanick Greer and Dr. David Edwards received awards during the Oct. 14 President's Recognition Dinner held at the newly opened Highlands Event Center.

WALL OF HONOR



DAVID G. EDWARDS '64

David G. Edwards, D.D.S. was raised in nearby Beech Bottom, W.Va. He graduated from WLU in 1964 with a bachelor's in biology, and went on to earn a master's and a Doctor of Dental Surgery degree at West Virginia University. He practiced dentistry for more than 40 years and has been an active member in the dental profession at a local, state and national level. He was a part time clinical professor at WVU School of Dentistry for nine years before being appointed to two five-year terms on the West Virginia Board of Dental Examiners, serving on the dental board for 10 years, three of those as president.

He is married to Linda Sue Forbes '64, a graduate of WLU's Sarah Whitaker Glass School of Dental Hygiene, and they reside in Wellsburg. They have established both a biology and dental hygiene scholarship at WLU.



CHRISTINA FISANICK GREER '96

Christina Fisanick Greer, Ph.D. grew up in Moundsville. After graduating from WLU in 1996, she earned a master's and a doctoral degree, both in English, from Ohio University. Her first post-graduate teaching position was at Xavier University. After five years, she decided to move home to West Virginia. In 2008 she accepted a teaching position at California University of Pennsylvania. She teaches writing, literature, and honors courses. In 2010 she won the Cal U Excellence in Technology Award, brought several grants to the university, and regularly collaborates with the Heinz History Center in Pittsburgh.

She is the author of more than 30 books, including two memoirs. She serves on the WLU College of Liberal Arts Board. She and her husband James Greer '97 have one son, Tristan, and reside in Wheeling.



ANDY MCKENZIE '98

Andy McKenzie is a Wheeling native and former mayor of the Friendly City. After graduating from WLU in 1998, McKenzie received his MBA from West Virginia University. He ran for public office and in 1996 he became the youngest state senator in the history of West Virginia. From 1996-2008 he served as a West Virginia state senator. In addition to serving as mayor and a state senator, he has been a financial advisor for 18 years for Wells Fargo Advisors. Recently, he was the keynote speaker for WLU's December 2012 Commencement, which resulted in his honorary doctoral degree.

A resident of Wheeling, McKenzie is married to Carrie Ann Martin McKenzie '92 and they have four children: Austin, Levi, Quinn and Victoria Ann (deceased). He is the grandson of country music legends Doc and Chickie Williams.

Do you know an Alum deserving of recognition?

Nominations should be submitted by April 30 of each year. All nominations and accompanying research are kept in the strictest confidence. Alumni not chosen for a particular year will remain on file for future consideration for five consecutive years. Nominate someone online: westliberty.edu/alumni

LIVING THE DREAM

New Martinsville native Ashlea Bland-Minch, principal of Woodsdale Elementary School in Wheeling, is a proud alumna. She earned her bachelor's degree in elementary education in 2004. While she was an excellent student, Minch is best-known for her acclaimed collegiate basketball career.

During Minch's four varsity seasons from 2001-2004, the Lady Hilltoppers saw four consecutive 20-win seasons and NCAA Division II Tournament showings along with a 102-22 (.832) record — the best run in the program's history. She led the West Virginia Conference in scoring, rebounding, field-goal percentage and blocked shots in her senior season, when she was also honored as an NCAA Division II Basketball All-American and a CoSIDA Academic All-American. Minch still ranks among our top five in career points (1,628), rebounds (864) and blocked shots (154). She was selected as one of the top 25 basketball players in WVIAC history in 2007, and was inducted into the WLU Hall of Fame in 2009.

"I miss it," Minch said. "There's a community there that I'm so happy to be a part of. Year in and year out, I get to keep that connection with the program."

Minch's basketball career didn't end once she graduated; she ended up taking the jump from star player to assistant coach. Then, Minch began a string of staff positions at WLU while earning her master's degree from WVU. She taught as a reading specialist and kindergarten teacher until landing the assistant principal job at John Marshall High School in 2013.

"My mom was a teacher for 35 years before she died, so I just grew up in that kind of an atmosphere," Minch said. "She had a passion for what she did, and I wanted to be just like her." Now, she is living the dream.

She lives with husband Herb Minch (Hilltopper head athletic trainer and softball coach) her two children, Zach, 5, and Alivia, 4, and her stepdaughter, Kailey, 11. They spend a lot of time at her alma mater.

"It's the perfect combination of college and hometown," Minch said. "I think the athletics had a lot of play into my ability to be a good leader in a school and to be a good administrator. It all kind of ties together; I was given a great education, I was afforded the opportunity to play basketball at one of the top places in the nation, and in turn, it just formed me to be the administrator that I am today. I owe my entire life, pretty much, to West Liberty, and I'm forever grateful."

Now the principal of Woodsdale Elementary School, Ashlea Minch '04 is shown on the playground with students Mackenzie Ernest (left) and Da'Caira Smith.



WLU: AGENT OF CHANGE WHEELING

For the past several decades, the Ohio Valley, with Wheeling serving as its metro hub, has suffered population loss and economic downturn. Wheeling's population, once in the top 20 in the United States, is now just over 27,000.

However, things are changing. A new wave of younger professionals, preservationists, artists and students are partnering with Wheeling-ites who have been trying to make a difference for years, and they are doubling down on Wheeling.

There is new construction in Downtown Wheeling with the groundbreaking of the 400-employee, Health Plan headquarters. New housing structures are being constructed, and new restaurants are serving millennial-friendly food, craft beer and music, and a new crop of City Council members and Mayor swept the May 2016 local elections.

"I think we are entering a period of time where for the first time in my lifetime people are talking about the present and future of Wheeling rather than about the past of Wheeling, and I am not being critical of those who talk about the past because this city's past is a remarkable history," said Mayor Glenn Elliott, a Wheeling native and attorney who returned to town after working in D.C. for years, first as an assistant to U.S. Sen. Robert C. Byrd and then in corporate law.

One only has to look in one's backyard to find examples of revitalization that give hope: Morgantown and Pittsburgh. Both are thriving communities who keep their young people in town and attract new residents by the droves. The common thread is the universities that serve as catalysts.

West Liberty University is poised to take a leadership role and serve as a similar agent of change:

- WLU Center for Entrepreneurship has incubated five new Downtown Wheeling businesses.
- WesBanco headquarters proudly employs 100+ alumni.
- WLU TV Channel 14 carries live election coverage, Show of Hands competitions, the Wheeling City Council meetings, the State of the City and community interest shows.
- College of Arts and Communication students and faculty have been instrumental in leading change through art with mural projects and events.
- WLU Downtown Center opened in September, with a satellite office for WLU Foundation and an office used by Advancement, Community Relations and Admissions.

"People appreciate the fact that you care about your community. That's why I think a focus on bringing people back is just as important as a concentration on retaining our young people," said Mayor Elliott recently.

Well Wheeling — the Hilltop's right here with you!

Photo credit: Andrew Croft
www.croft.gallery

EMBRACING NEW LEADERSHIP

West Liberty University's student body has seen several changes over the past year, and aside from a very active president, none have had quite the immediate impact as the newly-appointed Student Government Association executive board.

SGA members are responsible for many of the student activities and programs that happen throughout the year, with Homecoming as their top priority.

"Homecoming this year was by far our biggest success yet," said David "Reid" Boden, SGA President. "We plan things well in advance, and we're still learning the directions we want to go."

Boden is a sophomore education major who was born in Washington, Pa. and grew up primarily in Keyser, W.Va. He ran for SGA president as a freshman last year and believes that his ambition and love for the school and public service helped him overcome any obstacle to land the position.

"There were some people who were very, very unsure about my presidency," Boden said. "There were some people who thought I was too young, too inexperienced, and not ready for the position. What I thought was that it was time for this organization to have fresh, new leadership and a fresh, new vision."

"When I say it's a new era here on the Hilltop, I really mean that."

"I feel a very deep connection to this school; that's part of the reason why I came here," Boden said. "I wanted to be a part of something so much bigger than myself and be a part of an organization that was rebuilding itself."

West Liberty's SGA was recognized by the American Student Government Association. Their current goals include planning various student activities, rebuilding the "Topper Den," which is the student section at sporting events, and even considering a Redbox machine for the campus.

"We have people that want to get involved, that want to participate in things on campus," Boden said. "I would say that the student body is excited, they're energetic, and they're taking pride in this school. When I say it's a new day and a new era here on the Hilltop, I really mean that."



SGA President David "Reid" Boden and WLU President Dr. Stephen Greiner, standing at the doorway to Historic Shaw Hall.



COMMUNITY CHOIR

NOT JUST FOR MUSIC MAJORS

At West Liberty University, choir is not just for music majors — or even students!

“Our College Community Chorus is open to everyone who likes to sing. This spring we’ll perform one of the world’s top choral works, Mozart’s Requiem, so it’s a great year to be involved,” said Dr. Scott Glysson, assistant professor of music, now in his third year as choral director.



The WLU Community Choir performing Handel's Messiah.

“It’s a privilege to join with members of the community who all love to sing and rehearse and prepare for shows.”

The WLU Singers is the premier student vocal ensemble and membership is by audition only, though any major is welcome. Also directed by Glysson, the Singers tour internationally.

“We toured Ireland last spring and are headed to Toronto this May,” he said. “Our Singers are inspiring and wonderful to direct. You couldn’t find more enthusiastic, hard-working students anywhere.”

For more information, please contact Glysson at scott.glysson@westliberty.edu or 304-336-8090.

Attracting WLU students, area high school students and everyone, the Community Chorus requires no audition, just a love of music. About 70 members are on the roster and a great many are alumni. The chorus rehearses throughout the fall, winter and spring as it prepares for public performances of choral works with orchestras twice a year.

“This has been a blessing to those of us who have a passion for music. Dr. Glysson is very talented and his rapport with the choir is just remarkable,” said Carol Couch, former Wheeling music teacher. “I enjoy it so much it’s not an exaggeration to say I live for Monday nights!”

The College Community Chorus meets from 7-9 p.m. every Monday at Vance Presbyterian Church, Wheeling. Students are charged no fee but other members are asked to pay an annual \$50 membership fee.

“It’s a privilege to join with members of the community who all love to sing and rehearse,” said WLU senior Emily Wade, a business major. “There’s a great feeling when we come together and make music, then perform in public with orchestra, for our friends and family.” Wade is in both the Community Chorus and the WLU Singers (student-only group) and is from Sistersville, W.Va.



Dr. Scott Glysson directing the WLU Singers.

INTERNING AT WLU: BEHIND THE SCENES

West Liberty University contributed \$50.2 million to the state in 2014, according to an economic impact report that drew media attention this past August. But sometimes it’s what’s behind the headlines that matter. Take for instance Wheeling’s East Coast Hockey League (ECHL) team, the Nailers.

“Our Arts and Communication students are a major part of Nailers television broadcast. Students run camera, instant replay and assist with the overall production seen on ECHL TV and the arena video board,” explained Theresa Gretchen, executive director of WLU TV-14.

These are paid internships, so it’s a win-win for both our students and the Nailers

“These internships are amazing opportunities for a communications student.”

“These internships are amazing opportunities for a communications student. Especially for me since I grew up in the area, watching the Nailers. It’s great for experience and my resumé when I graduate,” said sophomore Kyle Patrick, from Glen Dale, W.Va., who hopes to become a TV sports anchor one day.

“Because of the Nailers, anytime there’s an event at the arena, our students tend to get hired, so the partnership offers even more experience and networking. It’s a perfect set-up and we are grateful to the Nailers and the WesBanco Arena for working with us as we educate new professionals to enter the field of communications,” Gretchen added.

Most recently, 14 was hired by the City of Wheeling to tape and air City Council meetings. Channel 14 also airs some of the Nailers away games, and even then students run master control here on campus to deliver sports action.

“Our students also are employed at Channel 7 (Wheeling), working in production and sports, and at WTOV Channel 9 (Steubenville) working in the station’s airing of high school football games of the week. Students attend the games, running camera or grip,” she said. These partnerships add so much to student preparation.

“All this hands-on experience lays the groundwork for future employment.”

“All this hands-on experience lays the groundwork for future employment. And the feedback we get is terrific. The staff at both local TV stations and the arena tell us that our students are well prepared,” Gretchen said. “We are proud to work with the community.”



NOTE: Economic Impact Report was commissioned by the West Virginia Higher Policy Commission and released by WVU Bureau of Business and Economic Research.

WEST LIBERTY UNIVERSITY FOUNDATION
BENEFACTORS REPORT

JULY 1, 2015 THROUGH JUNE 30, 2016



Angela Zambito Hill, CFRE
 Executive Director, WLU
 Foundation

Dear Friends,

I am happy to share the West Liberty University Foundation's Annual Benefactors Report, which includes our financial statement and other information about the state of the Foundation. The Foundation provides support in the form of scholarships, capital improvements, academic, and athletic projects that enhance the student experience and more.

Because of you, the WLU Foundation has grown over the years to a current status that is strong. Our mission is to support our University, which is historically state funded, but now receives only 18% of its operating budget from the state of West Virginia. Thus, our role has grown in significance, and future plans include continued growth. We are poised to lend even more support to the University in a way that accelerates enrollment growth and produces tuition revenue.

I am proud to be part of this effort and to lead the WLU Foundation into the future. I hope to build your confidence in me and the WLU Foundation. This report reflects last fiscal year 2015-2016, which saw many changes for the University. We are now deep in the current fiscal year with new leadership and exciting plans. I look forward to earning your continued support for your beloved West Liberty University.

In gratitude,

Angela Zambito Hill, CFRE
 Executive Director, WLU Foundation

**A SPECIAL NOTE FROM
 THE WEST LIBERTY UNIVERSITY FOUNDATION INVESTMENT COMMITTEE**

Dear Generous Friends of West Liberty University,

The Foundation Board of Directors is committed to the successful management and stewardship of private funds designed to support West Liberty University. As Chair of the Investment Committee, I along with five board members monitor the management of the Foundation's investments, which are currently directly managed by WesBanco Trust and Investments.

Through quarterly meetings with their investment team, we review their management to ensure adherence to the guidelines established in the investment policy statement. Committee members bring a wide range of experience including expertise in areas of banking, tax and accounting, legal, financial planning, and investment management. We are committed to the growth of the endowment to further the goals of the University and are proud to serve the Foundation and our donors.

Sincerely,

Russell Dunkin, CFP®
 Chair, West Liberty University Foundation Investment Committee

STATEMENT OF FINANCIAL POSITION

WEST LIBERTY UNIVERSITY FOUNDATION, INCORPORATED
 STATEMENTS OF FINANCIAL POSITION
 JUNE 30, 2016 AND 2015

	2016	2015
ASSETS		
Cash and cash equivalents	\$ 69,844	\$ 12,446
Unconditional promises to give	242,226	210,195
Other receivables	12,059	12,059
Investments at estimated fair value	12,461,210	12,978,974
Beneficial interest in perpetual trust	2,056,347	2,168,924
Other assets	67,707	61,107
TOTAL ASSETS	\$ 14,909,393	\$ 15,443,705
LIABILITIES AND NET ASSETS		
LIABILITIES		
Accounts payable and accrued expenses	\$ 11,075	\$ 11,924
Liability for charitable gift annuities	24,701	37,837
Total liabilities	35,776	49,761
NET ASSETS		
Unrestricted	1,282,238	1,464,049
Temporarily restricted	3,494,435	3,970,539
Permanently restricted	10,096,944	9,959,356
Total net assets	14,873,617	15,393,944
TOTAL LIABILITIES AND NET ASSETS	\$ 14,909,393	\$ 15,443,705

KEY MEASUREMENTS AND CALCULATIONS:

	Result	Calculation
Total Foundation Expenditures stated as a % of Total Assets under Management	1.0%	\$152/\$14,909
Ratio of Total Contribution to Total Foundation Expenditures	8.5 to 1	\$1,293/\$152
Ratio of Total Contributions to Total University Support Expenditures	.86 to 1	\$1,293/\$1,505

(To view the audited Financial Statements, Notes, and the Certified Public Accountant's opinion thereon, please go to the www.westliberty.edu/institutionaladvancement.)

STATEMENT OF ACTIVITIES

WEST LIBERTY UNIVERSITY FOUNDATION, INCORPORATED
STATEMENTS OF ACTIVITIES AND CHANGE IN NET ASSETS
FOR THE YEAR ENDED JUNE 30, 2016

	2016	2015
	In thousands	
	Total	Total
SUPPORT AND REVENUES		
Contributions	\$ 1,293	\$ 1,024
Interest and dividend income	(259)	727
Loss/Gain on investments		
Special Events	77	60
Change in value of split interest agreements	(113)	(102)
Other income	139	81
TOTAL SUPPORT AND REVENUES	1,137	1,790
EXPENSES AND LOSSES		
West Liberty University support:		
Scholarships	460	552
Athletic programs	119	138
Academic programs	403	214
Capital improvements	38	3,380
Other programs	417	347
Fundraising	68	67
General and administrative	152	134
TOTAL EXPENSES AND LOSSES	1,657	4,832
CHANGES IN NET ASSETS	(520)	(3,042)
NET ASSETS AT BEGINNING OF YEAR	15,394	18,436
NET ASSETS AT END OF YEAR	\$ 14,874	\$ 15,394

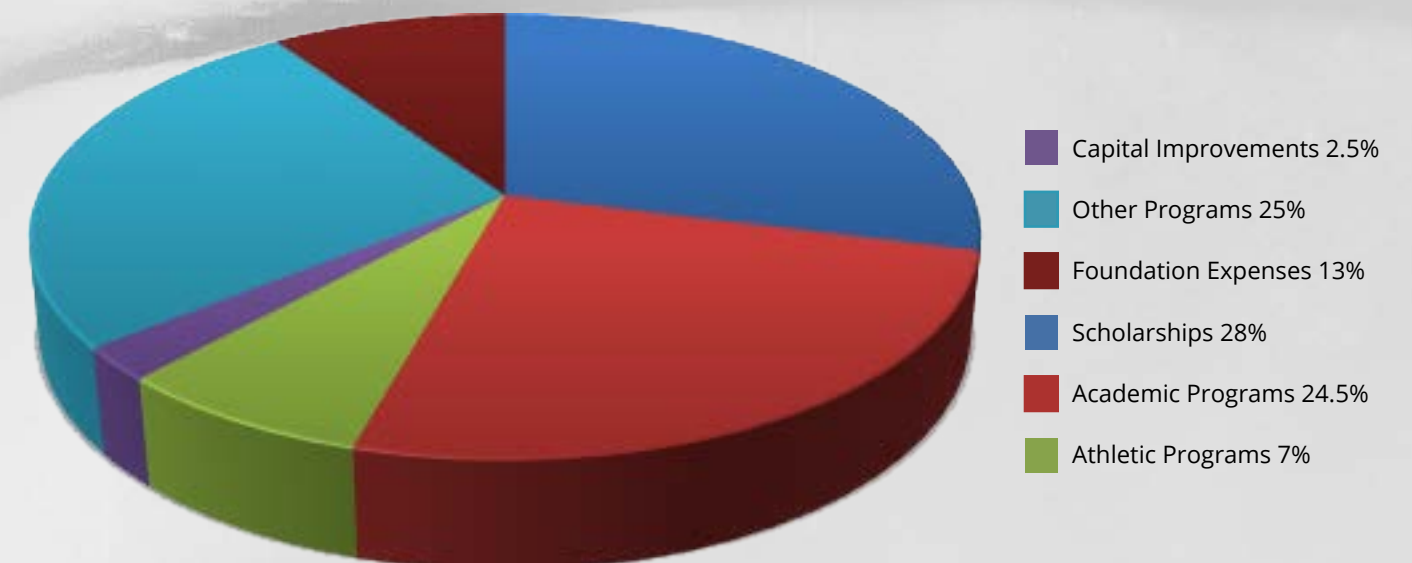
RETURN ON AVERAGE NET ASSETS EMPLOYED DURING FISCAL YEAR END JUNE 30, 2016	-1.0%	(\$156)/ \$14,874
Net Investment Income:		
Total Support & Revenue	1,137	
Less: contributions	1,293	
Net Investment Income	(156.00)	
Average Net Assets	15,134	(\$15,394+\$14,874)/2

(To view the audited Financial Statements, Notes, and the Certified Public Accountant's opinion thereon, please go to the www.westliberty.edu/institutionaladvancement.)

UNIVERSITY SUPPORT AND EXPENDITURES

2016 UNIVERSITY SUPPORT & EXPENDITURES

University Support	In thousands	Percent of total
Scholarships - based upon a total of FY 16 Annual Cost of \$15,500.00 for Tuition, Room & Board for an In-State student this amount provided the equivalent of 29 full scholarships.	\$460	28%
Academic Programs - Expenditures for JASON Learning Project, Classroom equipment, Professional Development Schools, Creative Learning Spaces, etc.	\$403	24.5%
Athletic Programs - Expenditures for Hilltopper Athletic Club, recruiting expenses, team travel expenses for tournaments, practice uniforms, purchase equipment, etc.	\$119	7%
Capital Improvements - Football Stadium renovations, Wrestling room renovations, Library Archives	\$38	2.5%
Other Programs - Expenditures for technology upgrades, Science Fair, WLU-TV (Channel 14), library expenses, Alumni Activities, Faculty Travel, Choir Tour, Faculty Development and Research, Community Support, etc.	\$417	25%
Foundation Expense - Includes salary and benefits, rent, operating expense, travel, etc.	\$152	9%
Fundraising	\$68	4%
TOTAL UNIVERSITY SUPPORT	\$1,657	100%
GRAND TOTAL SUPPORT AND EXPENDITURES	\$1,657	100%



NATHAN SHOTWELL SOCIETY



The Nathan Shotwell Planned Giving Society, established in 1997, recognizes and honors those who have made provisions for West Liberty University through a bequest in a will or other estate-planning arrangement. The Society is named for the Reverend Dr. Nathan Shotwell, who founded the institution in 1837 and served as its leader until 1854. Dr. Shotwell is credited with the establishment of the high academic standards to which the University continues to aspire.

The following alumni and friends of West Liberty University have made such provisions:

Anonymous (18)
 Albert M. Blatnik '49+
 Alfred R. de Jaeger
 Andrew Paesani '54
 Andrew '69 & Linda Pasden
 Andrew Paesani, Jr. '54
 Audrey Ciripompa
 B. Ann Thomas
 Billy E. Keller '70
 Blanche Barte Stidd
 Bob '67 & Patti Kota
 C. Nolan Cox '72
 Carlyle Farnsworth+
 Carol '77 Webster
 Carol Jean Reuther
 Carol Kirsch Terry '74
 Carolyn S. Garrison '64
 Catherine C. Mattingly '62
 Chester P. '47 & Rose Grossi+
 Christine C. Muroski
 Cindy Stickley
 Clyde '53 & Joan '62 Campbell
 Daniel N. Maxwell '31+
 David B. Kadar '74
 David D. Cohen '65
 David Jones '60 +
 Dennis '67 & Carol '66 Flaherty
 Dennis L. Daugherty '76
 Diana Duncan Ott '60+
 Donald '52 & MaryAnne Bruno
 Bruce L. & Donna Waugh '65 Berlage
 E. Kent '61 & Barbara Robinson
 Edward C. Gaughn+
 Elizabeth M. Boger '43+
 Elizabeth Wolf
 Esther Rowe+
 Florence Irene Nesbitt+
 G. Richard Deenis '89
 Gary '58 & Flip West
 Gloria E. Gasser '80
 Harry & Constance '81 Hein
 Hazel Jane Gilleland+
 Helen (Gibson) Herzler+
 Helen Kimble Maier '48
 Helen P. Elbin+
 Howard G. Lemasters '49+

Howard '66+ & Catherine
 Herrington
 Howard L. Shackelford '73
 Irene Meagel+
 Jack C. Adams '63
 Jack D. Grewell '34
 James '51 & Audrey '52 Stepp
 Jenny Lynn Morlan '81+
 Joan M. Watkins '65
 John D. "Jack" Grewell '34+
 John P. Larch '80
 John P. Liptak '80
 John William Hoppers '63
 Joseph E. Davis '61
 Judith Bartell Paesani '55
 Judith Schryver Azallion '99
 Kathleen A. Maestle '93
 Kathryn T. Neuman+
 Kenneth Harris '37+
 Lawrence H. Talley+
 LeRoy A. & Eve L. '70 Wallin
 Leah Gracey Campbell '39+
 Leslie DeFelice '76
 Lula K. Collins+
 Marilyn A. McCain '72
 Mark Bohlman '75
 Mary Ann Wolf+
 Mary Jane Norona '49+
 Mary Jane Reaney Ritson '45+
 Mary K. Ahrens+
 Meta M. Lasch '76
 Mildred Kaetzel Biggs+
 Miriam E. Kaiser '29+
 Nancy Crow Trentini
 Nancy Hall S. Wright
 Naomi Craig+
 Neva N. Caldwell '22+
 Patricial L. Bethel '79
 Paul N. Elbin+
 Peter '69 Sontag
 Phil '65 & Karen '65 Rea
 R. Clark '53 & Patricia Morton
 R. Emmett Boyle
 Rachel Katherine Krinke '45+
 Ralph E. Herzler, Jr.+
 Richard & Rebecca B. Stevenson

Richard & Sandra J. LaPosta '64
 Riopelle
 Richard '59 & Carol Garrison
 Richard '68 & Mary Jo Terry
 Richard H. Carter
 Rita M. Masur
 Robert & Audrey Fisher
 Robert J. Burke '76+
 Robert P. Haas '57
 Robert Richmond Fisher
 Roger L. DuBois '53
 Rosemary M. Front+
 Ruth Ann Scherich '51
 Ruth Markwell
 Sam K. Rollins '68
 Sara H. Schnitzler '49+
 Sara Jane Fritz '43+
 Sharon Murphy Cooate '69
 Stella Caravas Misoyianis '52
 Susan M. Fowler '73
 Thais F. Blatnik '76 +
 Theresa Lemasters '48
 Theresa Nagy '68
 Thomas '75 & Carol '74 Terry
 Toni J. Mason '60 +
 Virginia M. Lutes+
 Virginia T. Mellott '43
 Wilma G. Brindley '42

+Deceased

PRESIDENT EMERITUS DR. JOHN P. MCCULLOUGH SOCIETY



Individuals, foundations, and corporations that have contributed a minimum of \$25,000 in cumulative giving are recognized as members of the John P McCullough Society.

Anonymous (6)
 Aladdin Food Management Services, LLC
 Albert '49+ & Senator Thais '76 Blatnik+
 Albert '80 & Susan Roszczyk
 Alfred R. de Jaeger
 American Electric Power Foundation
 Andrew '54 & Judith Bartell '55 Paesani
 Axiall Corporation
 Barnes & Noble College Bookstores
 Bayer Corporation
 Ben & Lynne Exley
 Bordas & Bordas, PLLC
 Brian & Rachele Harlow
 Bristol-Myers Squibb Foundation, Inc.
 Brooke P. Koehler
 Charles & Lavoo Crutchfield+
 Charles R. Annett '66
 Chesapeake Energy Corporation
 Chevron North America Exploration and
 Production Company
 Chris Hess Foundation
 Civitan Club of Wheeling Inc.
 Claude Worthington Benedum Foundation
 Clyde '53 & Joan '62 Campbell
 Cynthia Goad
 Community Foundation for the Ohio Valley
 Consol Energy
 DaimlerChrysler Corporation Fund
 Daniel N. Maxwell '31
 David Jones '60+
 David '64 & Linda '64 Edwards
 David '77 & Ann Coffaro
 Doctors Urgent Care
 Dominion Foundation
 Donald '52 & MaryAnne Bruno
 Donelda J. Godfrey
 Douglas '73 & Susan '71 Sarkis
 Dragon and Phoenix Software Inc.
 E. Alex '82 & Valerie '87 Paris
 E. Kent '61 & Barbara Robinson
 Edgar Martin Classic
 ExxonMobil Foundation
 Florence Irene Nesbitt+
 Floyd Shuler '64
 Francis J. and Edith Jackson Family Foundation
 Fred & Audrey Horne
 Fred & Joan Stamp
 Gary '58 & Flip West
 Gary '64 & Paula Inclan
 George E. Stifel+
 George Smith '68+
 H. R. Bucky '64 & Joanne Kopf
 Harry & Constance '81 Hein
 Harry & Helen '61 Ludeman
 Hazel Jane Gilleland+
 Helen E. Levenson+
 Hilltopper Athletic Club
 Howard & Wendy Long
 Howard '49+ & Theresa '48 Lemasters
 Howard '66+ & Catherine Herrington
 Howard L. Shackelford '73
 Huntington Corporate Giving
 Irene Meagel+

Jack C. Adams '63
 Jack '34+ & Mildred Grewell
 James '61 & Carol '60 Frum
 James Taibi '86 & Kristina Williams '86
 Jane Atkins Sargent '63
 Jeremy C. McCamic
 Jerry '60 & Connie '57 Roberts
 Joe '69+ & Rita Gnazzo
 John+ & Jo Lynne Nugent '75 Stimmel
 John '78 & Kimberly '77 Dolan
 John C. Shaw+
 John L. Grim
 John P. McCullough
 John W. Carenbauer, Sr.+
 Johnson & Johnson Family of Companies
 Joseph D. Clark, Jr. '64
 Joseph E. Davis '61
 Kathryn T. Neuman+
 Kenneth D. Cover '65
 Kenneth Harris '37+
 Koppers Industries
 Larry '80 & Paula '72 Moore
 Larry H. Sebulsky+
 Lawrence H. Talley+
 Lary Loew '75+
 Leah Gracey Campbell '39+
 Lee Weeks Abraham '56+
 Leslie DeFelice '76 & Connie Nelson
 Louis '65 & Darlene '61 Cardamone
 Lula K. Collins+
 Lyell B. and Patricia K. Clay Foundation, Inc.
 Main Street Bank
 Margaret Anne Mayerich
 Mark D. Crow
 Martha Hudson Goodrich '44
 Marty '75 & Patti '76 Adams
 Mary Ahrens+
 Mary Jane Norona '49+
 Michael Joseph+
 Mildred Kaetzel Biggs +
 Naomi Craig +
 Nationwide Foundation
 Neva N. Caldwell '22+
 Nicholas & Fran Frank
 Ogden & Snookie Nutting
 Norma Jeffries+
 Ohio Valley Health Services & Education Corp.
 Olga Kohut Sebulsky Charitable Fund
 Ormet Corporation
 Parkvale Bank
 Paul & Helen Elbin+
 Peter '69 & Jingsi Sontag
 Pfizer, Inc.
 Phyllis A. Beneke +
 Phyllis A. Marsh
 Pittsburgh Alumni Chapter
 Pittsburgh Conference on Analytical, Chemical
 & Applied Spectroscopy
 Prezkop - Chappelle & Associates AC
 Project BEST
 R. Clark '53 & Patricia Morton
 R. Emmett Boyle & Debra J. Boger
 Rachel Katherine Krinke '45 +

Ralph E. & Helen M. Herzler +
 Randy & Betty Worls
 Robert & Stephanie Harris
 Robert Godfrey+
 Roger L. DuBois '53
 Sodexo Campus Services
 Rudolph Mumley '50+
 Sara Schnitzler '49+
 Shawn '87 & Julie '86 Ullom
 Shirley Ann Dietz+
 Solutions 21, Inc.
 Southwestern Energy Company
 State of West Virginia - Higher Education
 Policy Commission
 Swisher International, Inc.
 The Albert Schenk III & Kathleen H. Schenk
 Charitable Trust
 The Charles M. & Thelma M. Pugliese
 Charitable Foundation
 The Cornerstone Group
 The Health Plan of the Upper Ohio Valley, Inc.
 The Louis & Sandra Berkman Foundation
 The Nutting Foundation
 The P & G Fund
 The Ryan Ferns Healthplex
 Thomas '54 & Peggy '50 McCarroll
 Thomas '70 & Eileen Reinbold
 Touchstone Research Laboratory
 United Bank, Inc.
 Valley National Gases, Inc.
 Verizon West Virginia
 Vincent '64 & Linda Shimp
 Virginia T. Mellott '43
 W. Peterson & Jean Holloway
 WCHS-TV
 WesBanco Wheeling
 West Virginia University Research Corporation
 Wheeling Island Hotel Casino Racetrack
 William C. Wright '64
 William P. & Jane Atkins '63+ Sargent
 Williams MLP Operating, LLC
 WTRF-TV
 WV Department of Education & The Arts

+Deceased

HONOR ROLL OF DONORS

The West Liberty University Foundation Inc. is pleased to report that during the 2015-2016 fiscal year, over \$1.3 million was received to advance the mission of the university. Below is a listing of the many generous individuals, corporations, foundations, and organizations who contributed to this effort.

THE PRESIDENT'S CIRCLE

President's Circle is reserved for donors contributing \$1,500 or more within a fiscal year and include donors in the six different giving societies listed on this page. During this reporting period, President's Circle members provided a total of \$1,164,165.39 in private funding to the Foundation.

1837 SOCIETY- \$100,000 OR MORE

INDIVIDUALS:

Gary '58 & Flip West

CORPORATIONS, FOUNDATIONS & ORGANIZATIONS:

Dragon and Phoenix Software Inc.
Claude Worthington Benedum Foundation
Chevron North America Exploration and Production Company

WILLIAM CURTIS SOCIETY - \$25,000-\$99,999

INDIVIDUALS:

Charles R. Annett '66
Jack C. Adams '63
David '64 & Linda '64 Edwards
Anonymous

CORPORATIONS, FOUNDATIONS & ORGANIZATIONS:

Southwestern Energy Company
WV Department of Education & The Arts
Williams MLP Operating, LLC
Anonymous

LIBERTY SOCIETY - \$10,000-\$24,999

INDIVIDUALS:

David '77 & Ann Coffaro
Donelda J. Godfrey
Stanley M. Hostler
H. R. Bucky '64 & Joanne Kopf
Jeremy C. McCamic
E. Alex '82 & Valerie '87 Paris
Donald E. Pirro '66
James Taibi '86 & Kristina Williams '86

CORPORATIONS, FOUNDATIONS & ORGANIZATIONS:

Chris Hess Foundation
Community Foundation for the Ohio Valley
ExxonMobil Foundation
Francis J. and Edith Jackson Family Foundation
Gumby's LLC
Main Street Bank
Mountain State Biosurveys LLC
WesBanco Wheeling

WINDING ROAD SOCIETY - \$5,000-\$9,999

INDIVIDUALS:

Marty '75 & Patti '76 Adams
Kathryn Albert
Donald '52 & MaryAnne Bruno
Daniel L. Cunningham
Lynne & Ben Exley IV
Carol Ann Loew
Harry & Helen '61 Ludeman
John P. McCullough
Vince '62 & Kay '97 Monseau
Libby Royer
Sharon S. Saseen

CORPORATIONS, FOUNDATIONS & ORGANIZATIONS:

Bristol-Myers Squibb Foundation, Inc.
John C. Shaw Scholarship Fund
Nationwide Foundation
Mary Jane Norona Estate
The P & G Fund
Pittsburgh Alumni Chapter
RESA 3

ACADEMY SOCIETY - \$2,500-\$4,999

INDIVIDUALS:

James & Kristina Bacca
Tara M. Beiswenger '88
Alfred R. de Jaager

Leslie DeFelice '76 & Connie Nelson
Roger L. DuBois '53
James '61 & Carol '60 Frum
Martha Hudson Goodrich '44
W. Peterson & Jean Holloway
Robert & Melinda Kreisberg
Henry '61 & Mary Marockie
Samuel T. McCullough '12
Kenneth & C. Emmajo '55
Shearer
Floyd Shuler '64
Peter '69 & Jingsi Sontag
Cindy Stickley
Thomas '75 & Brenda '79
Thomas
William C. Wright '64

CORPORATIONS, FOUNDATIONS & ORGANIZATIONS:

The Cornerstone Group
Regional Economic Development (RED)
Panhandle Farmers Mutual Insurance Company
Vision Shared, Inc.

HILLTOP SOCIETY - \$1,500-\$2,499

INDIVIDUALS:

David '70 & Barbara '70 Beck
Bruce L. & Donna Waugh '65
Berlage
Clyde '53 & Joan '62 Campbell
Christine Carder '72
Thomas A. Cervone '75
James '74 & Sharon Clark
Joseph D. Clark '64
Richard '59 & Mary Jane '57
Copeland
Ryan S. Courtney '02
Kenneth D. Cover '65
Danny L. Cvetanovich '74
John '78 & Kimberly '77 Dolan
Mildred Engel '52
William '55 & Phyllis '57 Evans
Stephen & Kelli Fournier
Glenn '65 & Eula Fresch
David & Judy '68 Glatz
Richmond W. Glover '63
James Hetherington '51

Janet L. Honecker
Daniel '75 & Deborah '75
Joseph
Jason & Sarah Koegler
Bob '67 & Patti Kota
Janet Loew '85 & Robert Cooper
Kathleen A. Maestle '93
Linda Cowan
John Craig '72
Brian L. Crawford
Michael & Norma Davis
Joseph E. Davis '61
Gloria W. Driver '53
Richard '64 & Patricia Edge
Dave & Mary Ann Edwards
Peter L. Freeman
James H. Frey & Michael P. Hires
Annette Godown
H. Donald Gordon
Stephen Greiner & Nancy Miller-Greiner
Gresso's
David G. Hatch
John '75 & Lynn '73 Hellstern
John William Hoppers '63
Fred & Audrey Horne
Robert '64 & Cheryl '78 Joseph
David R. Klug '74
Gary & Janell Loh
Howard & Wendy Long
John A. Lovrak '69
Lawrence E. Lykins
Phyllis A. Marsh
Mario '65 & Chris '64 Mastroianni
Richard (Gene) McCausland
Tammy McClain
Scott McNulty '87 & Maya Crone
William '75 & Georgeann '81 Mercer
Norman B. Moyes '53
Todd '91 & Jackie '91 Nace
William J. Niesslein '08
Frank & Rosalie '71 Oliver
Thomas '88 & Kimberly '98 Puskarich
Phil '65 & Karen '65 Rea
Michael S. Robertson '70
Robert & Melissa Schilling
Richard Schoene II '84
Terence A. Shimp '68
Scott R. Shipman '97
Jeffrey Simms '89
Mark '99 & Melissa Smith
Richard & Rebecca Stevenson
Jennifer Lee Takacs '95
Paul T. Tucker
Olive L. Turner '51
C. Dan '76 & Cynthia '71 Warner
Wesley L. Watson '01
Arthur & Carol '77 Webster
Annette S. White '65
Robert & Susie Wiggins
Denis '75 & Gretchen '73 Wilson
Annie P. Wise '72
Myles B. Witchey '54
Ron '92 & Denise '92 Witt

CORPORATIONS, FOUNDATIONS & ORGANIZATIONS:

American Electric Power
American International Group, Inc.
Bordas & Bordas, PLLC
Grand Vue Park
McKinley & Associates
Ohio Valley Medical Center & East Ohio Regional Hospital
Pittsburgh Conference on Analytical, Chemical & Applied Spectroscopy
Progressive Bank
Robert L. and Helen E. Levenson Charitable Trust
Tech Connect WV
Visiting Angels
Wheeling District Dental Society

TOWER CLUB - \$500-\$1,499

INDIVIDUALS:

Anissa Anderson '93
Michael Aulick
Michael '78 & Jean '76 Bailey
Rowena Baker
Fred S. Benson
Linda L. Blair
Brad '79 & Mary Blair
Mary A. Blair
Jason K. Blair '95
Tom & Jane '63 Bland
David Blowers
Teresa M. Bonifant
Fred & Carol Booth
Larry '68 & Cathy '68 Carpenter
Robert & Claire Caveney
R. A. Cipriani '55
Audrey Ciripompa
Barbara Rikli Clark '69
David D. Cohen '65
George & Carol Couch
Joanna J. Cover '70
Linda Cowan
John Craig '72
Brian L. Crawford
Michael & Norma Davis
Joseph E. Davis '61
Gloria W. Driver '53
Richard '64 & Patricia Edge
Dave & Mary Ann Edwards
Peter L. Freeman
James H. Frey & Michael P. Hires
Annette Godown
H. Donald Gordon
Stephen Greiner & Nancy Miller-Greiner
Gresso's
David G. Hatch
John '75 & Lynn '73 Hellstern
John William Hoppers '63
Fred & Audrey Horne
Robert '64 & Cheryl '78 Joseph
David R. Klug '74
Gary & Janell Loh
Howard & Wendy Long
John A. Lovrak '69
Lawrence E. Lykins
Phyllis A. Marsh
Mario '65 & Chris '64 Mastroianni
Richard (Gene) McCausland
Tammy McClain
Scott McNulty '87 & Maya Crone
William '75 & Georgeann '81 Mercer
Norman B. Moyes '53
Todd '91 & Jackie '91 Nace
William J. Niesslein '08
Frank & Rosalie '71 Oliver
Thomas '88 & Kimberly '98 Puskarich
Phil '65 & Karen '65 Rea
Michael S. Robertson '70
Robert & Melissa Schilling
Richard Schoene II '84
Terence A. Shimp '68
Scott R. Shipman '97
Jeffrey Simms '89
Mark '99 & Melissa Smith
Richard & Rebecca Stevenson
Jennifer Lee Takacs '95
Paul T. Tucker
Olive L. Turner '51
C. Dan '76 & Cynthia '71 Warner
Wesley L. Watson '01
Arthur & Carol '77 Webster
Annette S. White '65
Robert & Susie Wiggins
Denis '75 & Gretchen '73 Wilson
Annie P. Wise '72
Myles B. Witchey '54
Ron '92 & Denise '92 Witt

CORPORATIONS, FOUNDATIONS & ORGANIZATIONS:

The Brad Paisley Foundation
Bridgestone Americas Trust Fund
The Chester Lumber Company
Coca-Cola Bottling Company
Collegiate Alumnae of Wheeling
Costanzo & Associates, PLLC
Covestro LLC
Elk Energy Services LLC
Federal Home Loan Bank of Pittsburgh
Grace Consulting, Inc
JMS Digital
JSK Realty Co.
Kalkreuth Roofing & Sheet Metal, Inc.
Kennen & Kennen Realtors
Marshall County FOP Lodge #112
McKinley Carter Wealth Services
Ohio Valley Surgeons, Inc.
Pfizer, Inc.
The Progressive Insurance Foundation
Project BEST
Starvaggi Charities, Inc.
The Columbus Foundation
TJ's Sports Garden Restaurant
Upper Ohio Valley Building & Construction Trades Council
WFF Facility Services, Inc.
Wheeling Hospital, Inc.

FOUNDERS CLUB - \$100-\$499

INDIVIDUALS:

Robert K. Abel '73
Richard H. Achtzehn '69
Chad & Hollie Adams
Philip Adkins
Betsey Alden '61
Fred Brunner & Bonnie Anderson
John P. Annis
Tom & Chris Anthony
Joan Anthony
Brad Archer & Alana Pentino
Russell '79 & Deborah '81 Archey
Thomas J. Babb
Lynne Bailey '65
Betty M. Bailey '70
Thomas '64 & Patricia '64 Baird
Clinton & Elizabeth Barr
Thomas H. Becker '63
Steven F. Benson
Elaine M. Blasko
Colleen Blon
Mark Bohlman '75
John R. Bonassi '69
Suzanne Boundy '61
Robert '63 & Arlene '61 Boyles
Charles Brand '64
Judith R. Breon '71
Brooke High School Class of 1984
Peggy A. Brummett '69
Albert Bucon '86
Reed '70 & Beverly '90 Burke
Kay K. Byard '62
Patricia J. Byrd '75
Linda Jean Cameron '82
Karen L. Carlyle
Paula Carnes '66
Richard H. Carter
Joe & Sandy Cartisano
Brian L. Castilow '70
Lihua Chen
Anthony J. Chiazza
Edward & Elizabeth Chris
Marlene E. Collins '60
Alan & Natalia Comer
Ernest & Maureen Comiskey '75
Mary E. Conwell
Scott A. Cook '89

Zach & Carrie Corbin
Jane Costanzo '84
Hale S. Coughlin
Lanny Couto
C. Nolan Cox '72
Tyrone Crawmer '74
David '89 & Jennifer Croft
Jim & Diana Crutchfield
Paul '63 & Saundra '62 Cunningham
Michael R. Cunningham '74
Patricia Dabrowsky
Joseph B. Davis
Mary Jo Davis-Headley '79
Mary Lou DeFillippo '73
Joseph '66 & Kathleen '65 Demko
Jo Ann DeWitt '86
James DiCarlo
Robert J. DiCiccio '73
Gary K. Dietz
John '66 & Jennifer Dineen
Jeffrey & Lori Dixon
Coley & Sharon Dize
Lawrence '70 & Nancy '70 Dobias
Joseph '72 & Debra Donahue
David '64 & Barbara '64 Dougherty
Jarod & Miriam Douglas
Virginia Dulany
S. Kay Duplaga
Richard Edwards
David Ellwood
Charles & Virginia Ellwood
Damon & Melissa Ensign
Richard J. Faiello '69
Thomas J. Fallon III '86
Olan Faulk III '70
Donald '76 & Mary '78 Ferda
Janet B. Ferree '56
Mark & Patricia Ann '76 Ferrell
John & Nancy Finley
James A. Fiorilli '71
Leslie R. Fish '70
Shawn Fluharty
G. Quinn Ford '72
Patrick & Alecia Ford
William & Karen Fowler
Christopher Freeman '83
William J. Freyler '63
Jaye & Judith Garrett
Carolyn S. Garrison '64
Garry L. Lewis DDS, Inc.
Christopher M. Gibbs '08
Gregory Gikas
Davie Jane Gilmour '75
Stephen Gilson '74
Gary & Missy Glessner
Domenic Granata
Sidney & Bonnie Grisell
William '48 & Dorothy Grubler
Judith Osburn Gummere '61
Nancy Y. Hall '63
Mary L. Hanley
Matthew Harder
Melinda K. Hart
Gary L. Hart
Pennye Hartman
Diana Harto
John W. Hattman
Judge David E. Henderson
John '70 & Judy '73 Hennen
Patrick J. Henry '83
Richard & Pamela Herndon
Susan C. Herrick
C. Keith Hieronimus '76
Tamila L. Higley '87
Travis P. Hinkle '07
Donald & Jean Hofreuter
Susan Hogan
G. John Holler III
Chuck Hood '85
Stephanie Hooper & Matthew Golein '04
Gerry & Elizabeth Hoover
Paul F. Hothouse '72
Nancy Howley '58

Henry M. Hupp '43
Katrina Hyde
Whitney Inkster
Paul & Barbara Irby
Frank & Kathleen Jackson
Kenneth & Penny Jans
David '67 & Alice '67 Javersak
William M. Jones, Jr.
Wilbur S. Jones
Michael '68 & Janet Joseph
Brian '78 & Julie Joseph
Cheryl Joseph '78
Katie L. Kacmarik '08
Deborah P. Kaiser
John '71 & Debbie '72 Karas
Charles F. Kazienko '69
Paula M. Keith '71
Gary Kenamond
Charles & Julie Kenamond
John W. Kepner
Karen Kettler
Scot '96 & Deborah '92 Kiggans
James R. Kimmel '01
Kenneth K. Kline '49
Robert & Tammy Kruse
Michael '90 & Wendy Kull
Rose Kutlenios
Gordon Lahey
Donna M. Lakomski
Jeremy & Paula Larence
Joseph '01 & Emily '92 Lefte
Ann M. Leonard
Larry J. Liberto '64
Bernard '70 & Karen '70 Linn
John P. Liptak '80
John & Gail Looney
Donna J. Lukich '79
Christine Machel '73
Douglas E. Mack '77
Cy A. Macosko '62
Gerald & Laura Main
Mary C. Malley '60
John R. Marchlenski '75
Stephen A. Marino '88
Edward '63 & Irene '64 Marks
Ruth Markwell
Melissa D'Aurora Marmie
Mickey Marotti '87
Jason & PJ Martin
Vishakha Maskey
Sherri A. Mason
John Matviko & Sandra Czernek
Ronald '65 & Mary '62 Mauck
Ron '63 & Mary Lou '65 Mauck
Donald J. McCoid '65
Carolyn McConaughy '83
Ryan P. McCullough
Cindy McGee '90
Jesse & Nina McHenry
Linda Jones McKee
Kelly L. McKeever '95
Andy '98 & Carrie '92 McKenzie
William & Susan '65 McNeil
Johanna H. Meissner
Andrew J. Mesaros '43
Martin Meszaros '60
Arthur '69 & Ellen '70 Mezerski
Thomas Michaud, Ph.D.
Stephen E. Mihalik
Jr. & Juanita Miller
Herb '89 & Ashlea '04 Minch
Judith D. Minder '63
Gust W. Mitchell '64
Barbara A. Morrell-Hughes '62
John & Donna Morrison
Janet E. Murray '85
Frank Muzopappa '58
Carl '01 & Stephanie North
Jo Lynne Nugent '75
Ogden & Snookie Nutting
Michelle L. Panepucci
David M. Paolisso '75
Mary Beth Parana

HONOR ROLL OF DONORS, CONTINUED

Jean Ann Park '80
Linda L. Parker
Robert '69 & Patricia Pascoe
Patrick Pecora '75
Jerry L. Pelle
Paul '81 & Nancy '80 Peluchette
Jeffrey L. Peretzman
Deana Pfarr-Taylor '79
Mark Pickens '86
Amy L. Pierce
Bonnie L. Porter '72
Nancy L. Quigley '97
Norman C. Radcliffe '68
Anthony D. Rager
Scott & Laura Reed
Daniel J. Reeves '65
Corey Reigel
Chad & Jamie Remp
Charles Richards
Bonnie Ritz '75
Helen R. Roberts
Timothy A. Rodsky '71
Michael & Deborah Romaine
Charles '70 & Karen '72 Roman
Michael Romano '71
Dwight Romick '60
Nina Rosenthal
Randel & Mary Russell
Laura Jane Sackett
James H. Scheetz '78
The Family of Rick & Cel Schneid
Alberta R. Schramm '51
Noel '61 & Joyce '62 Schwertfeger
Dennis '98 & Kimberly '98 Scruton
Tammi Secrist
John T. Sedgwick '75
Ronald L. Shenk '68
Timothy & Lynn Shetzer
Bill Signorelli '73
Jeanette C. Slenska '56
Gary '74 & Anne '74 Smith
Bernadette Smith
Wayne & Carolyn Smith
Louis & Sharon Spadafore
Clifton L. Spinner, Jr. '87
Shane '10 & Michelle Stack
H. Clayton Stapleton '70
Larry '65 & Connie '64 Stead
Judith Stechly '78
Bettie M. Steele '84
Gerald & Beulah Steiner
Anne E. Stephens '69
Mitchel D. Stevenson '74
Samuel W. Stewart '03
Samuel Spencer Stone
Adele Storm '83
Stella Strickling '75
Douglas Swartz
Michele R. Sweeney
Sara A. Sweeney '06
Larry '72 & Jessica '91 Taylor
Frank & Delores Tenney
Thomas '75 & Carol '74 Terry
Patricia Thalman
Diane B. Thomas
David '75 & Edye '02 Thomas
Jared C. Thompson '13
Alvin & Connie Thompson
Bonnie B. Thurston
Jeremy Tiu
Merle '76 & Geraldine '75 Tournay
Larry & Charlene Troggio
Carol S. Turek
Katherine E. Vani '77
Robert J. Varlas '71
Mark & Astrid Vaughan
Alecia Vidika
Sam Ucelich, Sr. '59

Kathleen Wack
Carol Walker
Joel & Judy Walker
LeRoy A. & Eve L. '70 Wallin
Jim & Lynn Watson
Marilyn M. Wehrheim '76
Adam & Erika Weidner
Gary A. Weisner '02
Stephen & Ashley Wharton
Herb & Helen Williams
Laurence P. Williams '68
Samantha C. Wilson '12
David Withers '66
Rebecca Witt
Brenda K. Womack
David '79 & Elizabeth '64 Wright
Basil P. Zabek '64
Francesca Zamana
Thomas & Trisha Zeiger
Donald & Sandra Zeiger
Michael Zeno '78
Nancy Knight Zimmerman '50
John '77 & Pamela '76 Zorbini
Richard Zuza, Jr. '75

CORPORATIONS, FOUNDATIONS & ORGANIZATIONS:

The Ryan Ferns Healthplex
A Bail Bonding by Suter's
Altmeyer Funeral Homes
The Bechtel Foundation Matching Gifts Program
Bedway Development Corp.
Blesco, Inc. DBA Subway
Cardinal Health Foundation Inc.
Carenbauer Wholesale Corporation
Carpet Showcase Flooring Center
Casey & Chapman, PLLC
Century Equities, Inc.
ChargElectriCo., Inc.
Collett Family Chiropractic
Kiefer Floors
Digital Dish, Inc.
Direct Online Marketing
Donald H. Lough Jr., DDS, Inc.
Edgco Inc.
Ennis Properties LLC
First Choice America Community
Federal Credit Unio
Fort Henry Capital LLC
Frank Noble-Attorney at Law
Giannamore's Pizza
Glen Dale United Methodist Church Choir
Gross and Company, Inc.
Hill International Trucks, LLC
Intuitive Web Solutions - BriteCore
Jeff Jordan's State Champ Camp, LLC
Johnson Controls Foundation
Education & Arts Matching Gift Program
Liberty Mutual Insurance
Matzke Concrete Products
McCann Distributing
Mifax-Wheeling
Miklas Meat Market
Nikki A. Nazionale-Birkhimer, DDS
Opus Music Club
Panhandle Cleaning & Restoration
Paree Insurance Centers
Park Health Center
Perfido Weiskopf Wagstaff + Goettel
Punjack Mechanical, LLC
Pyles Elite Sports Performance Institute
R. E. Saxon Jeweler
Richardson Copy Concepts
Riesbeck Food Markets, Inc.

Riverbridge Wealth LLC
RJW Global Trade Group
RSV Trucking Inc.
Sand Hill Sports
Sodexo Campus Services
St. Clairsville Eagles Aerie 2541
St. Paul's Episcopal Church
The Ohio County Commission
Thursday Music Club
Top Line Apparel, LLC
W.Va. - Ohio Motor Sales, Inc.
Weelunk LLC
Wells Fargo Foundation Educational Matching Gift Program
Wheeling Renal Care
Ye Olde Alpha
Your Auto Connection, Inc.
Zeiger Industries
Zeno, Pockl, Lilly and Copeland, A.C.
Anonymous

GOLD & BLACK CLUB - \$1-\$99

Dolores Adkins '76
Dallas & Alice Alkire
James & Tracy Allen
Robert '59 & Marjorie '58 Alpino
Joseph & Valerie Amman
Lisa C. Anderson '95
Anonymous
Michael & Belinda Austen
Stephen P. Austin '70
Sue Ann H. Backus '70
John P. Bailey
Heidi E. Bain '80
Kelly Young Baker
Sue Baker
Clark & Shannon Baker
Mary Barney
Linda Rose Barney '64
Evelyn C. Barr
Charlotte M. Barr
William & Vicky Barr
Amanda Anne Barry
Jonathan & Shelly Baughman
Dael & Alice Baughman
Thomas F. Bechtel
Caroline N. Becker
Timothy & Melinda Bennett
James & Linda Bennington
Mary Benson
Sheli Bernstein-Goff
Scott & Jill Bernthisel
George & Virginia Beverage
Lisa Ann Bicko
Gerald L. Bioux '80
Michael '97 & Charity '99 Blackwell
Kurt & Billie Blake
Todd '88 & Shannon '89 Blake
Stuart & Stephanie Bloch
Jody Bobek
Barbara K. Boggs
John R. Bonar '35
Russell C. Bond, Jr.
Ami L. Boroski '03
Jill L. Bowersock '10
Margaret Bowman
Nila McCord Boyd '75
Judy Brown
Melissa A. Brown '74
Mary K. Bruhn '70
Gloria L. Brunk '66
Rebecca Bugaj
Kathy G. Burke
Amy M. Burkes '96
Melinda A. Burkhart '80

Sandra G. Burnich
Karyna S. Cain '15
Susan Cain '78
Daniel '89 & Tricia '89 Calloway
Ramona Campbell '53
Bryan Capper
Raymond '66 & Karen '65 Cappone
Donald & Janice Carlyle
Christi L. Gress '06
Melissa A. Carpenter
Lynnette Cassis '81
Frederick M. Cerullo
Linda Chappell '67
Gregory Chase
Fuhua Chen
Claire A. Chris
Patrick & Susan Chris
Carol Churchman
Angela M. Cipriani
Arlene K. Clifton
Michael & Stephanie Coberly
John O. Cole
George & Jane Collett
Melissa Collison
Rick & Cindy Conrad
Katie Cooper
Danielle Cornell
Karen T. Cotton
Derek A. Cotton '06
Andrew A. Coulter '02
Lavaughn Coulter
Suzanne C. Cousins '63
Kayla L. Cox
Timothy J. Croft
Jennifer Doane Cross
Valerie R. Crow '15
Craig M. Crow '02
William G. Culan '71
Alisha A. Curtin '15
Suzanne M. Dailer '99
Tom Daly
Elizabeth C. Daugherty '71
Joseph Davis
William O. Davis II
Bridgette Dawson
Dante & Patricia DeAngelo
Bethany C. Dentice '14
John & Cynthia DeWitt
Paul & Suzanne Diehm
Sabatino DiMarzo
Mary Dimmick
Kimberly A. Dinoia
Barbara A. Dofka '57
Melanie Ann Donofe '88
Robert Druschel
Thomas & Eileen Dugan
Aimee A. Dwyer
Eric & Marcia Erling
Donald & Peggy Erwin
Susan Lynn Fanning '87
Scott & Maria Fela
Emily A. Fisher '09
Susan Forrester '76
James R. Forrester
Jack & Debbie Fowler
Dale & Michelle Foy
Gina Garcia
Arlan H. Garrett
Carolyn S. Garris
Susan Garrison
William E. Gavin '69
Robert W. Geake
Helen M. George
Melinda L. Gill '82
Nathan & Rachel Girona
Bill '84 & Angel '82 Glitch
Keith Goldman '91
Bertha Gongola '62

Mildred B. Graham '56
Lawrence R. Gress '66
Jeanette Gryskovich '75
Judith A. Guidish
Darryl J. Guidish
Becca Gulino '87
Gloria Guspyt '71
William Haberfield
Edward & Mary Jane Haberkorn
James A. Haizlett
Shannon Halicki
Tara K. Hardman
Cynthia A. Harrah
Frank J. Harrar Family
Beryl D. Hart
Dolores Dee Harvey
Nelva T. Hasson '60
Okey & Judy Hays
Paula R. Heagy '78
William J. Held '76
David Henschel '72
Kimber C. Herdman
William & Kathleen Herren
Jeanne R. Hicks
Christopher Chad Hill
Betsy J. Hill '71
Sharon L. Hinerman-Hall '75
Ihor & Catherine Hlohowskyj
Marian R. Holder '57
Randall A. Hollingshead
Martha J. Hores
Scott R. Hoshor-Johnson
Donna S. Howard
Vickie Hoyt
Chad & Natasha Hudson
Aaron & Courtney Huffman
Courtney Huffman
Edward E. Hughes III '74
William & Cynthia Iddings
Carol Jackson
Michael & Tracey Jenkins
Bruce Jochum
Joseph & Karen John
Tracy Johnson '88
Peggy E. Johnson '53
Robert L. Johnson '83
Brian Johnston
Jeffrey & Christine Kamerer
Lourdes Karas
Stanley '65 & Joyce '66 Kasserman
Mary Lou Kent '72
Richard P. Kestermont '70
Melissa D. Kiehl
F. Anne Kimbrough
Jay W. Knapp '76
Jeff Knierim
Daniel '74 & Carol '75 Knoch
Kathleen A. Knudsen
Bill '71 & Debby Koegler
Michelle L. Kosa
Richard & Kimberly Kreitzer
Danil A. Fisher '09
Susan Forrester '76
James R. Forrester
Jack & Debbie Fowler
Dale & Michelle Foy
Gina Garcia
Arlan H. Garrett
Carolyn S. Garris
Susan Garrison
William E. Gavin '69
Robert W. Geake
Helen M. George
Melinda L. Gill '82
Nathan & Rachel Girona
Bill '84 & Angel '82 Glitch
Keith Goldman '91
Bertha Gongola '62

Donelle L. Little
Robert Lowe
Robert K. Lundberg '76
Mary Ellen Lurty '60
Lillian J. Lutz '55
Nancy Kain Lyon
Anthony R. Macedone
Kathryn A. Male '95
Frank L. Mams
Hugh '54 & Phyllis '76 Manley
Doris F. Manning '55
Debbie Martin
Michael & Lori Mathieu
Robin G. Maynard '12
Bruce & Jennifer McClary
Wesley & Danielle McCoy
Michael & Rita McDermott
Claire A. McDermott
Mary Jo McGinley '78
Jim & Eileen McKee
Daniel J. McKeever '70
Leigh McQueen '65
Emily M. Mellie '14
Marilyn Mendelson
Don & Beth Mercer
Jeanne Mercorelli '85
Ray & Candice Merkle
James P. Mesteller
Erica L. Vavrek '04
Mark Miller
Doug Miller
H. David Millit, M.D.
Debra Montgomery '15
Linda Morrison '84
Eileen Mrvos
Aaron & Courtney Mullin
Ken & Jill '15 Murray
Betsy Dilly Myer '73
NC Sportz
Joseph Nemeth '98
Eric C. Neubauer '85
Ernest Nicholas
Craig A. Nickerson '74
Jill A. Nixon '06
Donald P. Nolte '78
Mary Kay Olashuk '87
Quinten & Darla Oldaker
Stephen O'Neal
Thomas '70 & Rita '71 Ososki
Duncan & Jeanne Othen
Rick & Kimberly Page
Romona Paladino
Victor Paladino & Alisha Lewis
John & Janet Palka
Judith L. Palka
Duane Pannell
Mark & Laura Pasko
Darnley K. Perkins
Paul H. Pickering '65
Marlene Pitt '51
Mark & Sharon Poloha
Robert G. Pritt
H. Kenneth & Brenda Pritt
Nicholas '75 & Bonnie '74 Queses
Amy L. Reef '93
Sara Reynolds '71
Robert W. Rieck '65
Jenna M. Riggle '06
Charity M. Riley '03
Mike, Linda, Deanna, Mike & Derek Rizzo
Sherry Rosenberg
Fred Rossell
Harold & Nancy Rowan
Teresa J. Rubel '93
Dolores Rujak
Mary Ruminski
Beth A. Salatino '88

Michael, Cheryl, Derek & Bailey Salatino
Philip Salatori '81
Carolyn Cookie Santilli '58
Betty A. Sauer
Travis T. Scammell
Angelina Scaramuzzo & Christopher Heilbrun
Paul & Diane Schnupp
Donna Schuler
Maureen Schwertfeger '78
Susan B. Scott
Roger G. Seeber
Randy Sieger
Howard W. Simpson
Margaret J. Six '81
Jessica R. Smith '06
Carey & Sara Smith
David L. Smith
Matthew J. Smith '93
Marcia Sorge '85
Anthony Sparachane, Jr.
Jenna N. St. Clair '15
Edith Staffileno
Philip Stahl '15
Sharon M. Stapleton '92
William & Lori Starr
Anna K. Stephan-Robinson
Kimberly Stevenson '79
Gregory '86 & Jodi Stewart
Edward W. Stifel, III
Ted '54 & Mary Ann '56 Stolarczyk
Richard H. Stonestreet '63
Patricia A. Stough '78
William & Rae Stuart
Roger W. Sullenberger '92
Philip D. Sweeney
Richard & Brenda Taylor
George & Darlene Thieroff
Sylvia Thomas
Dennis & Robin Thornburg
Greg & Erin '98 Thorngate
William A. Tighe '63
Deborah A. Timblin
Jennifer N. Torrence '12
Janet H. Tuerff '58
Mary K. Turek
Jeffrey A. Turner
S. Michael & Romaine '80 Turrentine
Connie Taylor Twedt '69
Jim & Tami Tysk
Rhonda J. Tysk '02
Roberta J. Underdonk '77
Timothy C. Unger
Bethani Vilkoski
Larry & Sheila Vishnick
Joe Wakim
Leroy & Cynthia Waldron
Raymon & Janice Walker
Joan M. Wallace
Deanna B. Warco '75
Monica Welikala
Arden & Rosalie Welsh
Verland & Carma West
Edward West
William & Kathryn Wheeler
Carrie J. White
Marlene A. Wiley '73
Cynthia Willey
John & Sharon Willits
David H. Wilmoth
Brian & Amy Wilson
James E. Winzenreid '73
Luann Wiseman
Lisa Witzberger
David, Karen & Dylan Wojcik
Mary Ann Yandrich '80
John L. Yeater, Jr. '96

Mary Lou Young
Ashley E. Zago '13
Maureen Zambito
Judith Zeidler '63
Judy K. Zeiger
Edward & Deborah Zienkowski
Ann H. Zwolensky '65

CORPORATIONS, FOUNDATIONS & ORGANIZATIONS:

Aetna Foundation
C.A.B. Technologies & Printing Solutions, LLC
Courtney's Cuts LLC
Franks Hair Quarters
IBM Corporation
MassMutual Financial Group
Michael C's Optical
Michael J. Hulit DDS, Inc.
Park Dances Revisited
That's the Spot!
Walters Construction, Inc.
Wheeling Park High School
WLU Biology Club
WLU Campus Police

We have done our best to provide accurate information in the lists above. Please accept our apology for any errors or omissions. If you have any changes, corrections, or questions, please call the WLU Foundation at 304-336-5635.

THANK YOU!

HONORARY GIFTS

Gifts were made by the following donors to recognize individuals whose names appear in bold font.

SHELI BERNSTEIN-GOFF

Libby Royer

JERALDINE W. DAILEY

Rowena Baker
Fred & Carol Booth
LeRoy A. & Eve L. '70 Wallin

ALFRED R. DE JAAGER

John T. Sedgwick '75

DAVID T. JAVERSAK '67

Russell '79 & Deborah '81 Archey
Joe & Sandy Cartisano
Linda Cowan
Charles & Virginia Ellwood
Chuck Hood '85
Charles F. Kazienko '69
John P. McCullough
Deana Pfarr-Taylor '79
Matthew J. Smith '93
Stella Strickling '75
Gary A. Weisner '02

JOHN P. MCCULLOUGH

Jack C. Adams '63
Marty '75 & Patti '76 Adams
Thomas J. Babb
Michael '78 & Jean '76 Bailey
Rowena Baker
Michael '97 & Charity '99 Blackwell
Mary A. Blair
Jody Bobek
Margaret Bowman
The Brad Paisley Foundation
Reed '70 & Beverly '90 Burke
Patricia J. Byrd '75
Susan Cain '78
Clyde '53 & Joan '62 Campbell
Christine Carder '72
Casey & Chapman, PLLC
Lihua Chen
Fuhua Chen
John O. Cole
George & Carol Couch
Lavaughn Coulter
Lanny Couto
Jim & Diana Crutchfield
Tom Daly
Leslie DeFelice '76 & Connie Nelson

Richard '64 & Patricia Edge
David '64 & Linda '64 Edwards
Dave & Mary Ann Edwards
Richard Edwards
Lynne & Ben Exley IV
Susan Forrester '76
James R. Forrester
Peter L. Freeman

James '61 & Carol '60 Frum
Susan Garrison
Richmond W. Glover '63
Annette Godown
James A. Haizlett
Tara K. Hardman
Beryl D. Hart
Diana Harto
John W. Hattman
Susan C. Herrick
Katrina Hyde
Rose Kutlenios
Arlene J. Lawson '82
Keith F. Lawson
David & Marie Linden
Henry '61 & Mary Marockie
Vishakha Maskey
Sherri A. Mason
Linda Jones McKee
Arthur '69 & Ellen '70 Mezerski
Thomas Michaud
Doug Miller
Norman B. Moyes '53
Marian V. Mullin
William J. Niesslein '08
Carl '01 & Stephanie North
E. Alex '82 & Valerie '87 Paris
Andrew '54 & Judith Bartell '55 Paesani
Pittsburgh Alumni Chapter
Nancy L. Quigley '97
Corey Reigel
Timothy A. Rodsky '71
Sherry Rosenberg
Laura Jane Sackett
Noel '61 & Joyce '62 Schwertfeger
Anna K. Stephan-Robinson
Cindy Stickle
Sara A. Sweeney '06
David '75 & Edye '02 Thomas
William A. Tighe '63
Jeffrey A. Turner
Olive L. Turner '51

Joe Wakim

Jim & Lynn Watson
Gary A. Weisner '02
James Taibi '86 & Kristina Williams '86
Laurence P. Williams '68
Ron '92 & Denise '92 Witt
David '79 & Elizabeth '64 Wright
Mary Ann Yandrich '80

VINCE MONSEAU '62

Richard H. Achtzehn '69
Ryan S. Courtney '02
Christopher M. Gibbs '08
Jeff Jordan's State Champ Camp, LLC
Vincent E. Monseau '92
Todd '91 & Jackie '91 Nace
Mark '99 & Melissa Smith
Wesley L. Watson '01

RICK PRICE

Anissa Anderson '93
Ryan S. Courtney '02
Michael & Norma Davis
Richard '64 & Patricia Edge
Olan Faulk III '70
Lawrence E. Lykins
Gerald & Laura Main
Vince '62 & Kay '97 Monseau
Patrick Pecora '75
Richard Schoene II '84
Scott R. Shipman '97
Louis & Sharon Spadafore
Samuel W. Stewart '03
Merle '76 & Geraldine '75 Tournay
Wesley L. Watson '01
Edward West '77

ALEXANDRA RINE '13 & META LASCH

Audrey Ciripompa

PETER '69 & JINGSI SONTAG

John P. Annis
David G. Hatch
Judge David E. Henderson
William M. Jones, Jr.
R. E. Saxon Jeweler
Mark & Astrid Vaughan

MEMORIAL GIFTS

Gifts were made by the following donors in memory of the individuals whose names appear in bold font.

NICK BAKER

Rowena Baker
Fred & Carol Booth

JOSEPH A. BARTELL

Andrew J. Mesaros '43
Andrew '54 & Judith Bartell '55 Paesani

THAIS F. BLATNIK '76

John P. Bailey
Jeff Knierim
Henry '61 & Mary Marockie
Jeremy C. McCamic
John P. McCullough
Eileen Mrvos
Cynthia Willey

NELSON CAIN

John P. McCullough
Carl '01 & Stephanie North
Rhonda J. Tysk '02

DAVID COWAN

Alfred R. de Jaager

Michael C. Cox

Susan Hogan

CHARLES B. DAVIS II '57

Timothy J. Croft
William Haberfield
Intuitive Web Solutions – BriteCore
Gordon Lahey
Dave & Theresa Lindert
John P. McCullough
Panhandle Farmers Mutual Insurance
Company
Paree Insurance Centers
Arden & Rosalie Welsh

CHARLES B. DAVIS III '80

Joseph B. Davis
Anthony R. Macedone
Anonymous

SHIRLEY ANN DIETZ

Joan Anthony
Tom & Chris Anthony
Stuart & Stephanie Bloch
Gary K. Dietz
Joseph & Karen John
Bruce & Jennifer McClary
John P. McCullough
Don & Beth Mercer
H. David Millit, M.D.
Paul & Diane Schnupp
Patricia Thalman
George & Darlene Thieroff

WILLIAM J. DOLAN '75

John '78 & Kimberly '77 Dolan

CARLYLE FARNSWORTH

Mary Lou DeFillippo '73

ROBERT GODFREY

Donelda J. Godfrey

JOANNE DAVIS GOLEIN

Jim & Tami Tysk

THOMAS A. HOSTUTLER

Kelly Young Baker
Sheli Bernstein-Goff
Dave & Mary Ann Edwards
Lourdes Karas
Marshall County FOP Lodge #112
John P. McCullough
Randel & Mary Russell
Jim & Charlene Stultz
Sylvia Thomas
Lisa Witzberger

JOHNNIE ARTHUR FRANCES KERNS

Brenda K. Womack

ROBERT & HELEN LEVENSON

Betty Blum
Robert & Patty Levenson

DOROTHY LONG

Howard & Wendy Long

JAMES G. MARSH '60

Phyllis A. Marsh

KENNETH B. MCMILLEN

John William Hoppers '63

JOHANNA H. MEISSNER

Elaine M. Blasko
Jo Ann DeWitt '86
John P. McCullough
Laura Jane Sackett

RUTH CHILDERS MIGUEL '50

Mildred Engel '52
Donna M. Lakomski

JENNY MORLAN

Daniel L. Cunningham

GARETH NORTON

Gregory Gikas
John P. McCullough

DONALD L. PAHL, SR. '58

Cindy Stickle

GEORGE & MILDRED POLAK

Ihor & Catherine Hlohowskyj

BETH A. SALATINO '88

Russell '79 & Deborah '81 Archey
James & Kristina Bacca
Kelly Young Baker
Brooke High School Class of 1984
Carol Churchman
John O. Cole
Patricia Dabrowsky
Dave & Mary Ann Edwards
Emily A. Fisher '09
Jack & Debbie Fowler
James '61 & Carol '60 Frum
Gary & Missy Glessner
Frank J. Harrar Family
Diana Harto
C. Keith Hieronimus '76
Martha J. Hores
Jason & Sarah Koegler
Michael '90 & Wendy Kull
Myra S. Kull
Stephen A. Marino '88
Melissa D'Aurora Marmie
John P. McCullough
Linda Jones McKee
Ray & Candice Merkle
Herb '89 & Ashlea '04 Minch
Craig A. Nickerson '74
Rick & Kimberly Page
Nancy L. Quigley '97
Mike, Linda, Deanna, Mike & Derek Rizzo
Helen R. Roberts
Michael, Cheryl, Derek & Bailey Salatino
The Family of Rick & Cel Schneid
Margaret J. Six '81
Edith Staffileno
Jim & Charlene Stultz
Douglas Swartz
Michele R. Sweeney
Richard & Brenda Taylor
David '75 & Edye '02 Thomas
Greg & Erin '98 Thorngate
Walters Construction, Inc.
Verland & Carma West
WFF Facility Services, Inc.
Wheeling Park High School
David, Karen & Dylan Wojcik
Mary Ann Yandrich '80

LAWERENCE H. TALLEY

Rowena Baker
Jo Ann DeWitt '86
Charles & Virginia Ellwood
John P. McCullough

CLYDE THOMAS '70

Scott A. Cook '89

ROLLIE WILLIAMS

James Taibi '86 & Kristina Williams '86

KENNETH P. WRIGHT

William C. Wright '64

WEST LIBERTY UNIVERSITY FOUNDATION FUNDS

Listed below are the various funds held by the West Liberty University Foundation, Inc.

RESTRICTED GIFTS

Donations made to the West Liberty University Foundation, Inc. with a specific purpose stated by the donor.

UNRESTRICTED GIFTS

Donations made to the West Liberty University Foundation, Inc. to be used at the discretion of the Foundation for the benefit of the university.

TYPES OF FUNDS

ENDOWED SCHOLARSHIPS/FUNDS

A fund that is made up of gifts and bequests that are subject to a requirement that the principal be maintained intact and invested to create a source of income for an organization or a scholarship. Donors may set up an endowment to fund a specific interest; and a nonprofit's governing body may set up an endowment. In any case, an endowment requires that the principal remain intact in perpetuity, or for a defined period of time, or until sufficient assets have been accumulated to achieve a designated purpose. West Liberty University Foundation, Inc. requires a minimum initial gift of \$25,000 to establish an endowed fund. e.g., Scholarship; Travel Endowment; Professional Development Endowment; Professorship Chair. Currently the Foundation has a total of 95 Endowed Funds.

TEMPORARILY ENDOWED SCHOLARSHIP FUND

A temporarily endowed fund with a balance of less than \$25,000 may be established with the understanding that the donor/s or governing body intends to fund at a minimum \$25,000 level and that no income generated by the gift principal will be distributed until the \$25,000 minimum principal balance has been achieved. If not fully funded within five years, the temporarily endowed fund will be considered part of the Foundation's general endowment.

NON-ENDOWED FUNDS

A non-endowed fund is a fund held by the foundation designated for a specific use over a shortened period of time, e.g.; Organization accounts; Study Abroad; Capital Projects, etc. The foundation currently has a total of 75 non-endowed funds.

MORE INFORMATION

For more information or to establish a fund in the West Liberty University Foundation, Inc., contact:

Angela Zambito Hill, Executive Director
West Liberty University Foundation, Inc.
208 University Drive, CUB #126
West Liberty, WV 26074
304-336-5635 or 304-281-0118

The Gift Acceptance Policy can be accessed at:
<http://westliberty.edu/institutionaladvancement/wlu-foundation/gift-acceptance-policy/>

Thank You!



SAVE THE DATE
GREAT GALA
WEST LIBERTY UNIVERSITY
April 22, 2017 | 6:30 PM Oglebay, Glessner Auditorium



Top of the Hill Newsletter
WEST LIBERTY UNIVERSITY
 208 University Drive
 College Union Box 133
 West Liberty, WV 26074

westliberty.edu/alumni



NONPROFIT ORG
 US POSTAGE
PAID



CONNECT WITH US

Keep in the loop! Update your contact information today: westliberty.edu/alumni/class-notes

View class notes: westliberty.edu/alumni/update

FIND US ON SOCIAL MEDIA

 **West Liberty University**

 **@WestLibertyU**

 **@DiscoverWestLib**

TOP OF THE HILL is now printed in a newsletter format, reducing the cost of printing and environmental impact when compared to the former lengthier magazine. We strive to offer our readers a campus snapshot in an informative, brief manner. Please let us know online or via email your comments and questions.

Newsletter CREDITS

Editor
 Ron Witt, Director of Alumni and Community Relations

Writer
 Maureen Zambito, Director of Media Relations

Graphic Design & Layout
 Whitney Inkster, Director of Creative/Webmaster
 Samantha Wilson, Graphic Designer

Contributors
 Don Clegg, Sports Writer
 Angie Hill, CFRE, Executive Director, Foundation
 Jason Koegler, Vice President, Institutional Advancement
 Daniel Morgan, Trumpet Editor