



Breaking Barriers

2017 ANNUAL REPORT



WOMEN IN DISTRESS
OF BROWARD COUNTY, INC.

JIM & JAN MORAN FAMILY CENTER

Our Mission

To stop domestic violence abuse for everyone through intervention, education and advocacy.

IN 2016



LOST THEIR LIVES TO DOMESTIC VIOLENCE
IN BROWARD COUNTY

We dedicate this annual report
in their memory.

Letter From Leadership

Breaking Barriers



Throughout the year, we see many faces walk through our doors – young mothers, professionals, college students, babies, men. Just like there isn't one face of domestic violence, there isn't one solution to breaking the cycle. These pages are a snapshot of how we've moved beyond a shelter by **breaking barriers** to accessing services like legal assistance and job readiness, and developing programs and partnerships to better meet the unique needs of survivors. You'll hear from the survivors themselves. For many, their journeys have not been easy, nor were their pathways to overcoming the trauma. But they are stories of hope, with help from the community.

Through the generous support of our donors, community partners and advocates, and volunteers, Women In Distress (WID) served 2,802 women, men, and children, answered more than 23,000 calls for help on our 24-Hour Crisis Hotline, provided nearly 33,000 nights of safe shelter to more than 740 survivors, and provided more than 21,000 hours of counseling and advocacy last year. To better serve survivors, Women In Distress now has four satellite outreach locations throughout Broward County in addition to the main Jim and Jan Moran Family Center campus in Deerfield Beach. We launched several new programs: the Injunction for Protection legal team, an Economic Empowerment program and the Ultimate Training Center to help survivors build new skills and become financially independent.

We would not be able to break through these barriers without the help of our donors and partners. Late philanthropist Marti Huizenga's legacy of giving inspired donors Lois and Dennis Doyle to create The Marti Huizenga Endowment for Educational Advancement, providing education, vocational training, school and job readiness training to empower survivors. Marti was often the first to give, and challenge others to give, so I couldn't imagine a better way for her legacy to live on at Women In Distress. The family pet is also an additional barrier and means of control in homes with domestic violence. Thanks to a lead gift from the Bank of America Charitable Foundation's Neighborhood Builder's Program, we will soon open Broward County's first pet shelter for domestic violence survivors in partnership with the Humane Society of Broward County.

There's a lot of hope and progress that goes on every day at Women In Distress. There are no barriers to who we serve, and now there are fewer barriers to the services we provide. Thank you for making change happen and inspiring others to continue to break the barriers that hold them back from living a life free of domestic violence.

Karen Leikert
Chair, Board of Directors

Mary Redel
President and CEO

Phyllis Thomas
Immediate Past Chair

At Our Heart: Survival

24/7, 365 days a year and in four languages, the Women In Distress 24-Hour Crisis Hotline provides a pathway to hope and survival for domestic violence survivors. The calls are confidential and often the first time a survivor reaches out for help. Trained advocates listen without judgement, assess the situation, and direct survivors to our community partners for resources or to our Emergency Shelter or Leo Goodwin Foundation Outreach Center. The hotline provides lifesaving tools and immediate support that helps survivors find safety and begin to heal.

We provided a lifeline



to more people in need

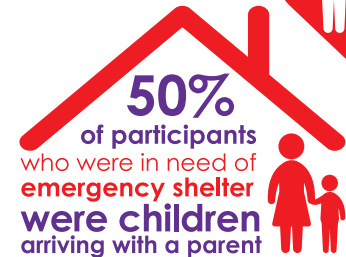
Answered
1,900
to
2,100
calls
per
month



Survivors in need of safe shelter are referred to our Emergency Shelter where they receive services including housing, crisis intervention, therapy and advocacy assistance, as well as food, clothing and household supplies. Childcare is a priority for many since half of those living in the shelter are children. We are committed to helping all individuals living in unsafe environments achieve independence, including men, the LGBTQ community, and those with special needs and disabilities.

The Leo Goodwin Foundation Outreach Center provides support services to survivors who may not need shelter but are in need of counseling and services like safety planning, counseling, support groups, and therapy for adults and children, including infants.

We helped more families reach self-sufficiency



40%
increase in new
children and
families seeking
services in the
Children and
Family Services
Department



During this time survivors and their families work to rebuild their lives by accessing **free & confidential** critical services



At Our Heart: Community

While the Crisis Line, Emergency Shelter and Leo Goodwin Foundation Outreach Center are at the heart of what we do, we also offer opportunities for our community to take part. Proceeds from all items purchased from the Women In Distress Thrift Store in Margate support our programs. Survivors receiving services at Women In Distress can also shop here for free, selecting suits to wear to interviews, furniture for their new homes once they leave the shelter, clothing for their children, and much more.

MAKE A DIFFERENCE

Items donated
by our community
are sold in the Women In Distress Thrift Store



100%

of the net proceeds
support services
provided by
Women In Distress

Educating our community on the intricacies of domestic violence is critical to breaking the cycle and helping survivors get the help they need. Our Education & Prevention team educates youth and professionals on the dynamics of teen dating violence, intimate partner violence, and the components to a healthy relationship. These trainings are provided to Title 1 schools in Broward County as well as businesses, and professional and community groups.

We broke the cycle of violence through education



BARRIER | No access to finances



SOLUTION | Economic Empowerment Program

The largest barrier to survivors living safe, independent lives is financial stability. Through the **Economic Empowerment Program**, survivors learn skills that promote long-term financial stability and communication skills. With help from corporate partners Ultimate Software, Wells Fargo, JM Family Enterprises, Inc. and other key partners, survivors take part in computer literacy, financial management, workplace skills, and English as a Second Language classes.

“ I finally had a safe home for me and my children, but figuring out how to make ends meet on my own was overwhelming. My advocate at Women In Distress suggested I take a couponing class they offered once a week. I loved it! Not only did I learn how to save money, but I also learned how to organize and take control of my finances. I never would have thought something as simple as clipping coupons would make me feel so good, but knowing I now have a skill that’s helping my family is empowering and just amazing.”

- *Lisette *Survivor name changed to protect their identity.

BARRIER | Lack of skills to compete in the workplace



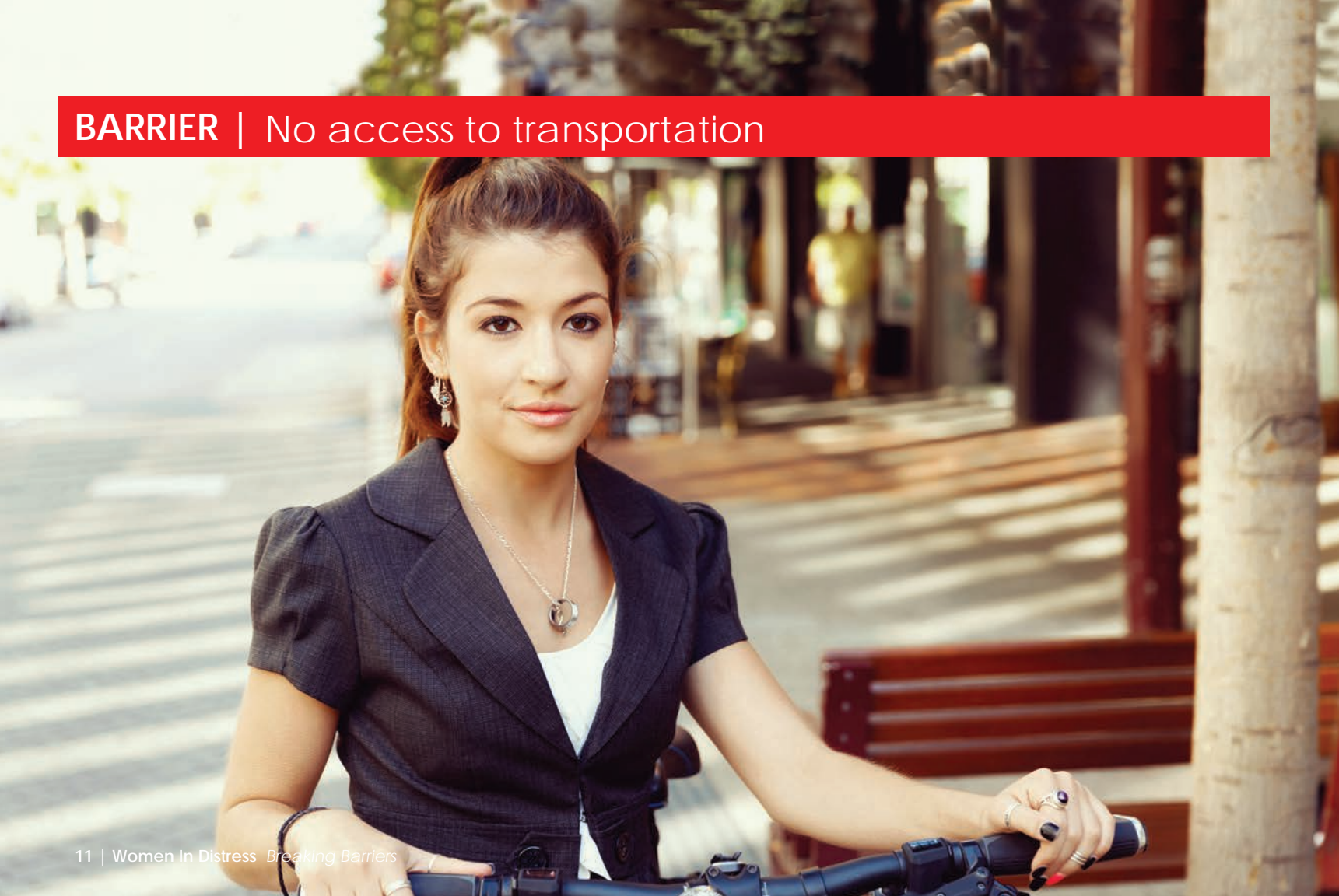
SOLUTION | The Ultimate Training Center

Thanks to the generosity of Ultimate Software and its Women in Leadership team, the **Ultimate Training Center** is the first-of-its-kind learning center to be built at a domestic violence center. The Training Center provides free job readiness, computer and technology training. This innovative partnership between Women In Distress and Ultimate Software helps survivors of domestic violence sharpen their talents and gain the confidence needed to rebuild their lives.

“Survivors are often so isolated by the abuse that they need new skills so they can return to the workplace or go back to school. With the major role technology plays in all of our lives, the **Ultimate Training Center is a critical resource** because it helps Women In Distress participants build their self-confidence, chart a new direction for their families, achieve their maximum potential, and live a life free of violence.”

- Vivian Maza, Senior Vice President, Chief People Officer, Ultimate Software

BARRIER | No access to transportation



SOLUTION | Satellite Outreach Centers

Access to transportation or money for gas can often prevent a survivor from getting help. To make our services accessible to all, small-scale models of our Leo Goodwin Foundation Outreach Center in Deerfield Beach are located in areas experiencing high rates of domestic violence incidents. We operate four **Satellite Outreach Centers** located throughout Broward County, with new locations opening in 2018.



Women In Distress continues to expand services at satellite locations to bring help directly where it is needed most.

Satellite Outreach Centers served **811** adults and children, a **75%** increase.

BARRIER | Lack of resources to file a restraining order



SOLUTION | Injunction for Protection Program

The **Injunction for Protection** provides survivors, at no cost, legal help to file injunctions for protection (restraining orders) against their abusers. This helps eliminate barriers that often keep survivors from seeking injunctions against their abuser and the financial burden.

“ I tried to leave my abuser, but found myself going back. I had never been in an abusive relationship and the abuse made me feel like I wasn't worthy of getting help. I went to Women In Distress desperate for advice and support. With their help I filed a restraining order against my abuser. Without it, I wouldn't have pursued legal action because that meant I would have to face my abuser in court. Because I went back so many times, I didn't trust that the judge would understand my situation. The abuse and shame makes it hard to trust anyone. Women In Distress was a part of my testimony which gave the judge a better understanding of my situation. It was a very empowering experience. The legal process isn't over. But I am worthy of closure.”

- *Betty *Survivor name changed to protect their identity.

BARRIER | Family pets are abused and used to control survivors



WOMEN IN DISTRESS
Pet Shelter
JIM & JAN MORAN FAMILY CENTER

SOLUTION | The Women In Distress Pet Shelter
Opening Spring 2018

Domestic violence impacts all members of the family, including pets. Oftentimes, survivors choose to remain in an abusive situation because few shelters accommodate pets. With support from Bank of America Charitable Foundation's Neighborhood Builder's Program, Women In Distress will soon open Broward County's first pet shelter for domestic violence survivors. The Humane Society of Broward County will provide animal care, including spay and neuter, and vaccinations, creating the first-of-its-kind partnership between a local Humane Society and a domestic violence shelter.

“When I told my husband I was leaving, he kicked our cat across the room. My children refused to leave without our pets because they knew he would hurt them, or worse. He always threatened me with that if I didn't come home on time or if I told our friends about the abuse. Thankfully, Women In Distress was able to find a foster family for our pets as we moved into the Emergency Shelter. But the change wasn't easy for my children, and having their pets by their side would have given them comfort at a time when they needed it most. I would have left the abuse a lot sooner if there were a shelter that allowed pets, so I know the Women In Distress Pet Shelter will save many more lives.”

- Nicole *Survivor name changed to protect their identity.

BARRIER | Trauma continues long-after the abuse



Provided advocacy & counseling services to

2,058



WOMEN



MEN



CHILDREN

SOLUTION | Women In Distress Therapy Program

Empowerment-based professional therapy services are provided to survivors of domestic violence and their children, helping them heal the emotional scars long after they've escaped the abuse. Individual therapy sessions, therapeutic support groups, and an innovative Infant and Early Childhood Therapy Program are available in the Emergency Shelter, Outreach Program, and offsite satellite outreach centers to address the unique trauma needs of our survivors.

“ My 13-year-old son Tyler* was challenging authority and behaving badly. After we left my husband, the trauma we experienced behind closed doors turned the life we knew upside down and took a toll on our relationship. During the six months we received therapy at Women In Distress, we were able to communicate our feelings to one another and began to understand how the abuse affected us. I feel that we have broken through. The counseling helped Tyler cope with being rejected by his father. The therapist was wonderful with my son. His grades improved and we have more good days than bad ones.”

- *Lilly *Survivors' names changed to protect their identities.

Giving Hope



Hal Herman Children's Fund

When children see, hear and experience violence, it affects them in lifelong ways. They are more likely to exhibit behavioral issues and physical health problems, including depression, anxiety, and violence toward peers. Through the **Hal Herman Children's Fund**, the smallest survivors receive the support they need. Every dollar raised helps provide critical support for children, including shelter, food, clothing, and therapy services.



Donnah's Fund

After losing their daughter, Donnah, to domestic violence, Ira and Sara Jane Drescher established **Donnah's Fund** to give survivors a new start at life. Donnah's Fund empowers domestic violence victims to live safely and independently by providing support for housing payments and deposits, furnishings, and items needed to help survivors establish safe households for themselves and their children.

We are the only domestic violence center in Florida providing early childhood therapy for domestic violence survivors

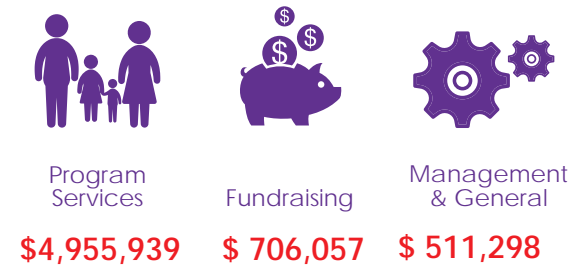


Financial Report

Revenue TOTAL = \$6,313,927



Expense TOTAL = \$6,173,294



Volunteer Leaders

Our dedicated Board of Directors and Board of Trustees work together with staff to fulfill our mission of keeping families safe. Our Board members are men and women from all walks of life, from law enforcement professionals to survivors of domestic violence. They reflect the communities we serve and create a substantial and ongoing impact in our community.

EXECUTIVE COMMITTEE

Karen Leikert, Wells Fargo

Michael Farver, Farver Family Foundation

Felicia Alvaro-Kennedy, Ultimate Software

Krista Kennedy, Deloitte Tax LLP

Anne B. Chervony, BFC Financial

Phyllis Thomas, The Thomas Family Foundation

Angelo Castillo, Broward Sheriff's Office

Billie Grieb, Community Volunteer

Patricia Maczko, Comerica

Marla Schaefer, Sarabi Family Office

Andrew Scott, Scott Roberts & Associates, LLC

Kathleen A. Grace, United Capital Partners

Mary Riedel, Women In Distress - President & CEO

BOARD OF DIRECTORS

Kim Bentley – JM Family Enterprises, Inc.

Stephanie Coker – Broward Sheriff's Office

Karen S. Grosby – Nova Southeastern University

Leslie Nixon – Miami Dolphins, Ltd.

Steve Pomeranz – United Capital Partners

Audrey Ring – Community Volunteer

Tami Clemenza-Wilson - Morrison, Brown, Arguiz & Farra, LLC

HONORARY BOARD MEMBER

Janet A. Boyle, In Memoriam

BOARD OF TRUSTEES

Carla Albano – Community Volunteer

Richard Bernstein – Broward College

Cindy Bibliowicz – McKinsey & Company

Maria Delegal – Anthony's Coal Fired Pizza

Joanne Gaines – Centennial Bank

Linda Garrett – Community Volunteer

Billie Grieb – Community Volunteer, Chair

Hal Herman – Worth International

Cynthia Imperato – CGI Consultants

Wendy Lieber – ContentBacon, Inc.

Silvia Mansons – Community Volunteer

Beatriz “BJ” Martinez-Prillaman – Sotheby's International Realty

Kim Miller – Ink Link Marketing

Carol Molnar – Comerica Bank

Lynne Prescott – Cancer Treatment Centers of America

John Primeau – Centennial Bank

Jennifer Saltz Bullock – Morgan, Lewis & Bockius LLP

Karen Sylvester – JM Family Enterprises, Inc.

Judith Thiel – Philanthropist

Keriann Worley – CBS Radio

Community Partners

Thank you to our community partners who help us provide important resources and services to our survivors and their families.

2-1-1 Broward
ABWA Coral Springs
A Child is Missing, Inc.
Austin Hepburn Center – Hallandale Beach
Barry University
Boys and Girls Club of Broward County
Broward County
Broward County Clerk of Courts
Broward County Courthouse
Broward County Jail Facility
Broward County Public Schools
Broward Domestic Violence Council
Broward Health
Broward Police Chief Association
Broward Regional Health Planning Council
Broward Sheriff's Office
Broward Victim's Rights Coalition
Catholic Charities
CareerSource of Broward
Carlos Albizu University
ChildNet
Children's Harbor
Children's Home Society
Children's Services Council of Broward

City of Fort Lauderdale
City of Hallandale Beach
City of Hollywood
City of Hollywood – Domestic Violence Initiative
City of Miramar
City of Pembroke Pines
City of Plantation
City of Sunrise
City of Wilton Manors
Coast to Coast Legal Aid Services
Community Foundation of Broward
Consolidated Credit Counseling Solutions
Department of Children and Families
Family Success Center
Flipany
Florida Atlantic University
Florida Attorney General - Children's Legal Services
Florida Coalition Against Domestic Violence
Florida Department of Health in Broward County
Florida International University
Gulf Coast Jewish Family and Community Services
HEART Alliance
Henderson Behavioral Health

Hispanic Unity
Holy Cross Hospital
Jack & Jill Children's Center
Jewish Family Service of Broward County
KID Broward County
Legal Aid Service of Broward County
Lynn University
Memorial Healthcare System
No More Tears
Nova Southeastern University
Office of the Florida Attorney General - Children's Legal Services
Southwest Focal Point Community Center – Pembroke Pines
St. Thomas University
State Attorney's Office – Domestic Violence Unit
SunServe
Susan B. Anthony Recovery Center
The Pride Center at Equality Park
The Salvation Army of Broward County
Tomorrow's Rainbow
Trinity International University
United Way of Broward County

Impact Partners

We would not be able to help keep families safe without the invaluable support of businesses in our community. Thank you to our Impact Partners who are committed to working side-by-side with Women In Distress to provide services to survivors of domestic violence.

Bank of America
Broward County
Cox Media Group
FCADV
JM Family Enterprises & Southeast Toyota Distributors
Leo Goodwin Foundation
Marlins Foundation
Memorial Healthcare
Miami Dolphins
Publix
Sun Capital Partners Foundation, Inc.
Sun Sentinel
The Jim Moran Foundation
The Thomas Family Foundation
Ultimate Software
Walmart Foundation
Wells Fargo
Yellow Cab

Your Support Breaks Barriers!

Thank You

On behalf of the families we serve, thank you for your financial and in-kind donations. Your support makes it possible for us to provide the services and programs that help fulfill our mission to end domestic violence abuse for everyone. While we only have space to publish those donors who contributed at the \$100 level and above between July 1, 2016 – June 30, 2017, we sincerely appreciate every donation. We apologize for any unintentional errors or omissions.

\$100,000+

Bank of America Charitable Foundation, Inc.
Broward County Board of County Commissioners
Florida Coalition Against Domestic Violence
Mary N. Porter, Fund of the Community Foundation of Broward
State of Florida - Victims of Crimes Act
The Jim Moran Foundation, Inc.
Thomas Family Foundation

\$50,000+

Cox Media Group
Gore Family Memorial Foundation Trust
Janet* and Jack Boyle
Leo Goodwin Foundation, Inc.
Sun Capital Partners, Inc.
The Dennis M. and Lois A. Doyle Family Foundation
The Edward and Gale McBride Foundation, Inc.
Ultimate Software
Walmart Foundation

\$25,000 - \$49,999

Carla Albano and George Cann
City of Plantation
Helen Ingham Foundation
JM Family Enterprises and Southeast Toyota Distributors
Nature's Sleep
Paul Palank Memorial Foundation
Arlene Pecora
RJ Worldwide, LLC
Roselyn Meyer Family Foundation, Inc.
Sun Sentinel Children's Fund,
a McCormick Foundation Fund
The Batchelor Foundation, Inc.
Lorraine Thomas
Wells Fargo Foundation

\$10,000 - \$24,999

ADT Security
AutoNation, Inc.
B & L Service, Inc. - Yellow Cab BB&T
Broward Sheriff's Office
Carnival Corporation & plc
City of Deerfield Beach
City of Fort Lauderdale
City of Hallandale Beach
City of Hollywood
City of Miramar
City of Pembroke Pines
City of Pompano Beach
Colony West Women's Golf Group
Dade Construction Corp.
Donnah's Fund
Hal Herman Children's Fund
Ira and Sara Jane Drescher
Elite Island Resorts
Estate of Anna J. Gates*
Estate of Rosemary Duffy Larson*

Fritch Family Foundation
Karen Gibson
Mike and Alice Jackson
Jody Kaminsky
Publix Super Markets
Memorial Healthcare System
Miami Dolphins Ltd., Inc.
Northern Trust
Nova Southeastern University
Wendy Shooster-Leuchter
David and Lynn Sobocinski
Stash Boutique
Stearns, Weaver, Miller, Weissler, Alhadef & Sitterson
The Domestic Violence Fund for Women In Distress
The Glick Family Foundation
The Martha G. Moore Foundation
Don and Judy Thiel
The United Way of Broward County
Walter G. Lohr, Jr. Fund
William R. Watts Foundation, Inc.

\$5,000 - \$9,999

A Xpert Window Tinting
Bluegreen Corporation
Broward County Clerk of Courts
Mary F. Cheaney and Jay Wein
City of Coconut Creek
City of Lauderhill
City of Oakland Park
Comerica Bank
Coral Springs Community Chest, Inc.
Fight Against Domestic Violence-FADV
Goodman Public Relations, Inc.
Hays Companies
Holy Cross Hospital, Inc.
Hudson Family Foundation
Wayne and Marti* Huizenga
Hull Family Foundation
James K. Oppenheimer, Fund of the Community Foundation of Broward County
Jewish Communal Fund
John E. and Nellie J. Bastien Memorial Foundation
Suzanne Klimek
Paul and Karen Leikert
Marlins Foundation
Mary Houlston MacDonald, Fund of the Community Foundation of Broward County
Mercantil Commerce Bank
National Council of Jewish Women, Inc.
Norman and Bettina Roberts Foundation, Inc.
OFRA Cosmetics, LLC
PNC Foundation
John H. Rav, Fund of the Community Foundation of Broward County
Yolanda Quevedo
Maria Schaefer
Barbara A. Sheer
Sirius Computer Solutions
SLED Club
Tate Family Foundation
The Kelsey Group
The Miami Foundation, on behalf of Dee Gordon & his Flash of Hope Foundation
The Sheriff's Foundation of Broward County, Inc.
The Shoebox Project for Shelters
Sandra R. Tittle
TXJ Foundation, Inc.
Town of Davie
Lewis Vernekoff
Women's Independence Scholarship Program, Inc.

\$2,500 - \$4,999

American Express Charitable Fund
Judge Arlene Backman and Judge Paul Backman
Bank of America Corporate
Stephen Beinke

Bracha Genossar Estate*
Brown & Brown Insurance
Rita Case
Charles J. Washburn Irrevocable Trust*
FBO Mario
Circle of Friends Foundation
City of Dania Beach
Michele and Stephen Ball
City of North Lauderdale
City of Sunrise
City of Sunrise Police Department
City of Weston
City of Wilton Manors
Gale M. Butler
Mark and Linda Garrett
David and Carol A. Geller
Billie Grieb and Duke Lohr
Jesse and Patti Holshouser
Gabriel and Cynthia Imperato
Gordon W. Latz
Macy's Corporate Giving
Tom McManus
Minto Foundation, Inc.
Morrison, Brown, Argiz & Farra, LLC
Sandra Moss
Peter and Sandra Nori
One Sotheby's International Realty
Pamela Palumbo
David S. Pearl
Graeme Pentland
David A. Peterson
Sandra Porceng
Publix Super Markets Charities, Inc.
Winnie Rayo
Reeder Cattle Company
Risk Management Services, LLC
Royal Caribbean Cruises Ltd.
Rubin and Gladys Wollowick Family Foundation
Arali Santana
Saxon Business Systems
SBA Communications Corporation
Barbara Schlossman
Ann Sommer
Stiles Corporation
ID Charitable Foundation
The Benevity Community Impact Fund
The Dr. Joy To The World, Inc.
The Faith Center Ministries
Home Foundation
The Gaddis Family Foundation, Inc.
The Harry T. Mangurian, Jr. Foundation, Inc.
Al and Phyllis Thomas
Town of Lauderdale by The Sea
Town of Pembroke Park
Treatment Search, Inc.
Twicenu
Wellnext, LLC
Gloria Westbrook
YourCause LLC

\$1,000 - \$2,499

7th District Omega Psi Phi Fraternity
Allstate Foundation
Felicia Alvaro-Kennedy
Al E. Baker
Brian and Susan Baker
Michele and Stephen Ball
Scott and Pamela Baynes
BeYoutiful Vibes
Gregg and Cindy Biblowicz
Broward Center for the Performing Arts
Gale M. Butler
Marcae Carolan
Lesley Castro
City of Cooper City
City of Lauderdale Lakes
City of Margate
City of Tamarac
Clarke Chiropractic & Rehabilitation
Estelle Cohen
Community Foundation of Broward
Keith Costello
Cruisers of South Florida
Dade Paper Company
Dart Foundation
Deerfield Beach Chamber of Commerce
Christine DeHerrera
Delta Sigma Theta Sorority, Inc.
Joyce Demain
Elizabeth Friedman O' Connor Family Foundation, Inc.
Penny Eppy
Joseph Esquerdo
First Data Corporation
Floridan Golf Club
Fort Lauderdale Marriott Harbor Beach Resort & Spa
Matthew Fox
Bonnie Gardner
Allen and Sharon Gerber
Gloria P. Goldberg
Goodyear Tire & Rubber
Samantha Grant
GRC Wireless, Inc.
Stephen M. Greep
Hank Grooms
Mark Hamilton
Home Depot Interiors
IKEA, Sunrise
Johnathan S. and Patricia G. England Foundation
John Knox Village
Joan Johnson
Mike and Carmen Kahmann
Kapila Mukamal, LLP
Lee J. Kaplan
Marissa Kelley
Scott and Krista Kennedy

Lisa J. Kitei
Keith and Doreen* Koenig
Kristin D. Jacobs Campaign
Mary Anne Kull
Cindy Lemak
Lucky's Market
Jonathan Meyerer and Tabitha LeTourneau
Lee McDonald
J. McLaughlin
Kim T. Miller
Mocha Shic Events M.S.E.
Pauline Murdock
Bill Norkunas
Linda S. O'Mara
Steven L. Pomeranz
Daniel M. Provenzano
Leora Ratzon
William and Mary Riedel
S&P Global
Susan E. Sachs, Fund of the Community Foundation of Broward County
Seminole Hard Rock Hotel & Casino
John Shaw
Karen Silber
Phyllis Smith
South Florida Council of Advanced Practice Nurses, Inc.
Leslie A. Sponder
St. Ambrose Council of Catholic Women
Andrea Stranglen
The Brazilian Court Palm Beach
The Brunetti Foundation
The Cassill Foundation, Inc.
The Community Service Foundation of Broward County
The Miami HEAT
Tim Ryan Campaign
Town of Southwest Ranches
Travelpro International, Inc.
Wildside Online, Inc.
Kathryn Wisne
Joanne Young
Zonta Club of Deerfield Beach, Inc.

\$500 - \$999

Lydia M. Acosta
Dana Adler
Adrienne Arshnt Center
Aktion Parks
Alan & Marsha Levy Charitable Foundation
Robert and Felice Alden
Judy A. Arledge
Atlantic Coast Kayak
Auggie's Doggies
Ayco Charitable Foundation
B Ocean Fort Lauderdale

Deborah Bannworth
Lydia Bart
Beacon South Beach Hotel
Deborah Beinke
Bud and Kim Bentley
Marie Blaison
Darran Blake
Karla Blake
BNY Mellon Community Partnership
Broward County Parks and Recreation Division
Ann Marie Burris
Capitol Lighting
Betsy Castenir
Angelo Castillo
Centennial Bank
Linda Chassman
City Furniture
Dale Conner
Courtyard by Marriott Miami Aventura Mall
CycleGiving
Rosaline Cyr
Audrey N. De Howitt Chatkevicius
Larry and Ellen Denerstein
Frank B. Dolph
Bernard* and Sandra Driscoll
Ian Miller
Dunkin' Donuts
William R. Easby-Smith
Christine Economos
Embassy Suites Deerfield Beach Resort
Penny England
Evolving Bodyz
Edith Friedheim
Deeann Gallo
Gig and Marcia Gersh
Howard and Marjorie Gitten
Alan and Jane Goldberg
Jillian Goltzman
Glenn and Fabienne Grossman
First Beat Media
First Presbyterian Church of Fort Lauderdale
Florida Department of Corrections
Fort Lauderdale Country Club
Fraternal Order of Police Lodge 32
Grande Oaks Golf Club
Carmen Grosso
Tom and Polly Gruber
Guzzo Fitness Systems
Bryan Haagenson
Sandy Harrington
Charlie Harrison
Steve Heaney
Hal and Lois Herman
Hoffman Revocable Family Trust
Holman Automotive, Inc.
Homewood Suites Miami Downtown/Brickell
Sandra L. Horne

Infinite Health and Wellness Group
Inspire Salon by Mia
Insurance Auto Auctions, Inc.
Interval International
JM Associates Federal Credit Union
Wendy C. Johanssen
Kabbalah Centre
Alpha Kappa Alpha Sorority, Inc.
Kerala Samajam of Florida
Kosher Fashions
Jan Kreuz
Ondria LaMorte
Law Office of A. Randall Haas
Aaron Lechner
Norman and Marilyn Lefkowitz
Loews Miami Beach Hotel
Jay Maltby
Sherry Marek
Vivian Maza
McFatter Key Club
Medical Staff of Holy Cross Hospital
Mary Katherine F. Megu
Tamar Meirson
Miami Seaquarium
Ian Miller
Miramar United Methodist Church
Lorie Moran
Roy and Sharron Munro
Museum of Discovery and Science
Ryan O'Donnell
Painting With A Twist
Papa's Raw Bar
Paralegal Association of Florida, Inc.
Parkway Christian Preschool
Parkway United Methodist Church
Delia Passi-Smaller
Patchington - Pompano Beach
Dennis and Judy Paul
Pepsico
PPI Group
John G. Primeau
Jonathan and Francine Ralph
William and Audrey Ring
Robert O. Law Foundation, Inc.
Adele Aletti
Geraldine J. Roberts
Taren Ruggiero
Vincent Scapecchi
Anastasia Schauer
John and Lois Schmatz
Alpha Christian Church
Shavitz Law Group
Pauline M. Smith
SMPS of South Florida, Inc.
Brenda C. Snipes
Sophil, Inc.
Richard Stark

State Attorney's Office
Victor and Darlene Stosik
Teva Pharmaceuticals
The Hotel of South Beach
The Marlins Foundation
The Merck Foundation
David and Carola Bamberger
Maria Baro
Bartell Chiropractic Life Center
Amy Batchelder
Charles Bay
Shirley Beaupied
Kenneth Beckett
Patricia Beers
Michael Beinke
Jean Bell
Alfonso Ugarte
United Way of Greater Philadelphia & SNJ
United Way of Palm Beach County, Inc.
George and Mary Ann Uznis
Valencia Point Women's Club
Sarah Valentini
Nava Viniar
Kathy Walsh
Waterstone Resort & Marina
West Wind Inn
Wines For Humanity
Dina Zimmerman

\$100-\$499

A Aaron's Environmental Services, Inc.
Aberdeen Golf & Country Club
Ranee M. Abramson
Pina Ackerman
Actor's Playhouse at the Miracle Theatre
Mari Adam
Adolph and Ruth Schnurmacher Foundation, Inc.
Aetna Foundation
Marlene Aguero
A Jane Events
AJS Consulting LLC
Peter Aletti
Grace Alexander
All County Health Care, Inc.
Allied Kitchen and Bath
Sandi Burman
Carolyn S. Burns
Busch Gardens
Business Improvement District of Coral Gables
Cambridge School
Campaign of Mitchell Ceasar
Jeffrey Cannon
Carlton and Graham Retail Constructors, Inc.
Mayda Arias

Stephanie Aronesty
Kevin Aubry
Gail Auguston-Koppen
A Window Between Worlds
Maria Bailey
Thomas and Kathy Bambenek
David and Carola Bamberger
Maria Baro
Bartell Chiropractic Life Center
Amy Batchelder
Charles Bay
Shirley Beaupied
Kenneth Beckett
Patricia Beers
Michael Beinke
Jean Bell
Alfonso Ugarte
United Way of Greater Philadelphia & SNJ
United Way of Palm Beach County, Inc.
George and Mary Ann Uznis
Valencia Point Women's Club
Sarah Valentini
Nava Viniar
Kathy Walsh
Waterstone Resort & Marina
West Wind Inn
Wines For Humanity
Dina Zimmerman

Carolina Club
Ken Caruso
Barbara Castell
Phillip Castle
Paul and Gina Castronovo
Cathedral Church of God
CEP Consultants, Inc.
Diego Chaparro
Dee-Shawn Charleswell
Marc Charpentier
Chester's Fort Lauderdale Harley-Davidson
Anne B. Chervony
City College Ambassadors Association
City Oyster & Sushi Bar
City Style Express Music Industry
Jennifer Cohen
Michael Cohen
Scott and Esther Cohen
Marta Cole
Charles Colella
Kaitlyn Coleman
Theresa Coletti
John Colodny
Patricia Colosimo
Comfort Medical
Kathleen Constantine
Carol Conti
Betsy Cooper
Jennifer Cooper
Maria Cornelius
Gary and Monica Correll
I. Corrigan
Mildred Coyne
John Crawford
S. Curtis and Barbara Creasy
Diane Cruz
Crystal Lake Golf Club
James Cunningham
Melissa Curry
Renee Dalton
Leatrice Damas
Jody Dancer
Lorelle Day
Arturo de la Nuez
Debbie Wasserman Schultz
Belkis DeChurch
Deer Creek Golf Club
Ronald and Lusbia DeFerrari
Debora DeHowitt
Robert and Joanne C. DeLizza
Alice K. Detore
Victor Diaz-Herman
Richard and Judith DiDonato
Jeremy Dietz
Gwendolyn Dillard-Martin
Bernard Doddo

Dolphins Plus Bayside
Ken and Heidi Doolan
Lyly Dorsey
Stephan and Joan Drescher
Drinkhouse Fire & Ice Lounge
Oleksandra Drosky
Brian Duggan
Colette Durst
E. T. Legg & Co.
Eagle Trace Golf Club
Doris Edelman
Debbie Edlin
Susan Eisler
Nury and Jolinda Eljaiek
Joan M. Elmore
Empire Education Group
Endless Jewelry
Entic
Epic Hotel
Candice Ericks
Carole Ertley
Kimberly Fabrizio
Lisa Faina
Elizabeth Falk
Robert Farenhem
Michael and Susan Farver
Robert and Leeanna Fatovic
Karen Faust
Rose M. Ferrara
Marianne Ferro
Fidelity Charitable Gift Fund
Margarita Fiduccia
Kimberly D. Fields
Financial Strategies Group, Inc.
Catherine T. Finnegan
Finster Murphy's
Ann Flannery
Florida Keys Periodontics & Implantology, P.A.
Silvia M. Flores
Denise Foley
Jimmy Fordham
Brenda Forman
Karen Formica
Katherine Foster
Fresh Point South Florida
Friends of Birch State Park
Carl Fuhs
John Fumagalli
David Furth
Sean Gabay
GableStage at The Biltmore
Megan Gaddis
Gala Dance & Unity Center
Linda Gaibel
Cynthia Gallette
Galleria Fort Lauderdale

Jeffrey Gally
Jim Gambill
GAP Foundation
Rolando Garcia
Kevin Garey
Bob and Betty Ann Gaynor
Peter Gegerson
Heath and Christine Gieson
Katherine Gillies
Joseph Gillis
Juan and Leticia Gihart
Jean Giovannelli
Gabriela Giralt
Glacier Ice and Snow Arena
Glantz & Glantz PA
Ira and Marietta Glazer
Elizabeth L. Gleason
Global Golf Sales, Inc.
Jennifer Golden
GolfTEC Boca Raton
Gordon Food Service
Patty Gorman
Kathleen A. Grace
Michael and Anna Grant
Joan Greaves
Allen and Judith Green
Michelle Green
Ralph A. Greene
Jack and Beth Greenman
Greenspoon Marder
Rosemarie Greve
Arnold and Barbara Grevior
Michele Griffin
Janet D. Guardabassi
Guidant Management
Cynthia Gunther
Srabana Gupta
Susan Gutman
Maria Guttuso
Silvia M. Flores
Denise Foley
Jimmy Fordham
Brenda Forman
Karen Formica
Katherine Foster
Fresh Point South Florida
Friends of Birch State Park
Carl Fuhs
John Fumagalli
David Furth
Sean Gabay
GableStage at The Biltmore
Megan Gaddis
Gala Dance & Unity Center
Linda Gaibel
Cynthia Gallette
Galleria Fort Lauderdale

Derek Holding
Homestead Miami Speedway
Lorna Honecker
Jennifer Hopkins
Toni Hopkins
Houston's Restaurant
Cynthia Hoyos
Indian Spring Country Club
Institute of Contemporary Art, Miami
Intercontinental at Doral Miami
Island Queen Cruises
Ivy Leez Luxe Makeup and Beauty Lounge
Jacaranda Smiles
David and Ellen Jackson
Craig Jaffe
Kenneth and Victoria Jaffie
JB's on the Beach
Evan Jenne
Jewish Community Centers
of South Broward, Inc.
JM Lexus
Joe DiMaggio Children's Hospital Foundation
Joe's Stone Crab Restaurant
Beth Johnson
John Wiley & Sons, Inc.
Janet F. Jones
Lesley Jones
Jones Lang LaSalle Americas, AAF
Hilary Joyalle
Jacqueline Jullachs
Jason and Lauren Julius
Jacqueline Kania
James and Judy Kapper
Stephen Karp
Peggy Keating
Lisa Kelly
Kemper Corporate Services, Inc.
Selima Khan
Fred and Sandi Khani
Malory A. Kimble
Kip Hunter Enterprises, Inc.
Beth Klein
Bonnie Klein
Gloria C. Kline
Kimberly Knausz
David Kohl
Peter Kong
Harvey and Minna Kramer
Kathleen Kriete
Charles and Stephanie Krobot
Randy and Toni Krone
L&S Personal Service Coffee
Janice LaHaye
Robert Lamendola
Daniel Lapsley
David P. Lauer

Amie Laventhall
 Law Offices of Steven S. Farbman, P.A.
 Carolyn Lee
 Edward and Randee Lefkow
 Kay Lera
 Charlotte Lester
 Marilyn Levine
 Alex Levy
 Sue Levy
 Lani Lewis
 Jacob and Harriette Lion
 Joel and Lorraine Litow
 Laura Lodge
 Michelle Logue
 Angela Lomel
 Jennifer Lopes
 Lucia Lopez
 Leslie L. Lord
 Anthony and Diane Lostumbo
 Michael Loudis
 Shonna Loudis
 Lucky Pucks Hockey Club
 Merle W. Lundy
 Brian Lynn
 Nancy Lynn
 M.E.N.D. Families Corp.
 Wilhelmena Mack
 Shirl A. Madison
 Christine Madsen
 Eric Magnussen
 Mainlands 1 and 2 Woman's Club
 Serge Mallat
 Mandarin Oriental-Miami
 Charles Mandell
 Lynn Mandeville
 Silvia Mansons
 Darlene Marcroft
 Nancy Lynn
 M.E.N.D. Families Corp.
 Wilhelmena Mack
 Shirl A. Madison
 Christine Madsen
 Eric Magnussen
 Mainlands 1 and 2 Woman's Club
 Serge Mallat
 Mandarin Oriental-Miami
 Charles Mandell
 Lynn Mandeville
 Silvia Mansons
 Darlene Marcroft
 Margaritaville Hollywood Beach Resort
 Michael and Monica Maroone
 Marriott Boca Raton
 Kathryn Marsh
 George Martin
 Ginger Martin

Beatriz J. Martinez-Prillaman
 Peter and Dawn Martino
 Douglas and Kari Marx
 Joseph and Janet Marzouca
 Mark Matera
 Dean Maul
 Maury River Investment Co.
 Scot McBride
 Brian McDonald
 Debra K. McLaughlin
 Orange Theory Fitness
 Media Post Communications
 Medieval Times
 Miami City Ballet
 Miami New Drama
 Michael and Margaret Meldeau
 Cori Meltzer
 Francys Mendoza
 Merrell United Methodist Women
 Kirsten Meyer
 Rosalyn Meyers
 Donna Miller
 Lauren Miller
 Mary Miller
 Tom and Ginny Miller
 Kerrie L. Milligan
 Nicole Ming
 Kathy Mitchell
 Duncan Moffat
 Christine Monteith
 Natalie C. Moore
 Amanda Mor
 Eliana Morales
 Jonnine Morejon
 Morgan Stanley
 MovieTickets.com, Inc.
 Jeanne Moyer
 Ms. Molly Foundation
 Museum of Contemporary Art, North Miami
 Steven and Leah Nachman
 Daniel Nagler
 Nathaniel E. Green Attorney
 Allison B. Nazarian
 NCCI Holdings, Inc.
 Neal Advertising
 Nancy Neidich
 Howard Nelson
 John and Joan Nestor
 Beverly Neumetzger
 Jenny New
 New Jerusalem Primitive Baptist Church
 Leslie Nixon
 Kristen Noell
 Nores Precision, Inc.
 North American Refrigeration of South Florida
 Anne M. Northcutt

Nova Southeastern University's
 Affiliate Chapter of NBASLH
 Novel Tea
 NSU University Middle School
 Barbara Nunn
 Bobbi Ocean-Barbato
 Oceans 234
 Michael O' Connor
 Gail Oliver
 Thomas and Sandra Oliveri
 Beverly M. Roberts
 Orangebrook Golf and Country Club
 Robert and Merryl O'Rork
 Michael Osborn
 Osteria Acqua and Farina
 Dave Owen
 Walter and Mildred Padow
 Suzanne Palmer
 Tiffany Panciera
 Sabina Meyer
 Janet Parke
 Sasha Parker
 Parkland Garden Club
 Parkway Christian Church
 Anthony Pasquale
 Lee Patterson
 Danay Pelaez and Vanessa Molina
 Jennifer Sakaris
 Paul Saks
 Mark and Gail Saltz
 Saltz Michelson Architects
 Linda Sanders
 Kenneth and Susan Sankin
 Cynthia Peterson
 Dana Pickard
 Pi Chapter of Delta Kappa Gamma
 Rose Saviano
 Pinecrest Gardens
 Karyn Plante
 L.M. and Janet Ploucha
 Maria Pollack
 Fred Polsky
 Jana Porter
 Power Crunch
 Beatriz Prado
 Lynne Prescott
 Tony Prevett
 Priority One Credit Union of Florida
 Protea Enterprises, Inc.
 Provident Doral At The Blue Miami
 Eileen Prus
 Publix #1345
 Michael Quinlan
 Pablo Quintela
 Terry Rabinor
 Herman* and Dorothy Shooster
 Ivonne Ramirez

Zeinab Ramos
 Rapids Water Park
 Babb Rawlings
 Sharon Reeves
 Harry and Ursula Reiner
 Ana Reyes
 Karen Rhodes
 Ines Richards
 Diana Rios
 Ritz Carlton Fort Lauderdale
 Beverly M. Roberts
 Douglas Roberts
 Joseph Roos
 Joel Rosado
 Sandra D. Rose
 Michelle S. Rosenblum
 Vida Rouse
 Suzanne Rowe
 Christine Rozelle
 RSC Foundation, Inc.
 Deborah Rubien
 Anna Rubino
 Rose Russell
 Roxanne Russell
 Barbara B. Sabin
 Myra S. Sachs
 Jennifer Sakaris
 Paul Saks
 Mark and Gail Saltz
 Saltz Michelson Architects
 Linda Sanders
 Kenneth and Susan Sankin
 Terry Santini
 Carlos A. Santos
 Shone and Michelle Satterfield
 Irene Sutter
 Melani Schaab
 Robert and Loretta Schindelman
 John and Lois Schmatz
 Paul and Greg Schneider
 Paul A. Schuler
 Schumacher Clinical Partners
 Jacqueline Schuster
 Schwab Charitable Fund
 Diane Schwartz
 Kenneth Schwartz
 Melinda Schwartz
 Andrew and Kimberly Scott
 Sea Island Realty, Inc
 Ryan Sentz
 Serafino Waterfront Bistro
 Servants of Friends, Inc.
 Gary R. Shonyo
 Alizabeth Shooster
 Herman* and Dorothy Shooster
 Lora L. Siegel

Roy Siegel
 Barry Silverman
 Deborah Simons
 Joan Simonton
 Karen E. Skidmore
 James Slater
 Gregory Smalter
 Brian Smith
 Valerie Smith
 Smoke BBQ
 Careen J. Snead Williams
 Neil Solomon
 Siulili Sosa
 Andrew and Samantha Sossin
 SoulCycle
 Maura L. Spardy
 Greg Spencer
 Gail Spier
 Tonya Springer
 Sabine St. Fort
 Terry Stade
 Sheila Stanley
 St. Benedict's Episcopal Church
 Sandra Steffen
 Steiger Facial Plastic Surgery
 Gina L. Steink
 Sari Stoll
 Peter Stramaglia
 Erick Strati
 Strawbridge Family Foundation
 Velma Stuart
 Janice Stubbs
 Eric Stumpff
 Pete Sudler
 Susan B. Anthony Center, Inc.
 Irene Sutter
 Karen A. Sylvester
 Ta-boo American Bistro and Bar
 Target #2092
 Laura Tarvainen
 Mary Anne Tate
 Kathleen J. Taylor
 Kathryn Taylor
 R.L. Taylor
 Geraldine Terry
 The Atlantic Hotel and Spa
 The Bass Museum of Art
 The Estates of Fort Lauderdale Women's Club
 The Field Irish Pub and Eatery
 The Florida Renaissance Festival
 The Island Womens Club
 The McDonald Family Foundation, Inc.
 The Pillars Hotel
 The Prissy Hen
 The Rhodes Insurance Group
 The Women's Club of West Broward

Barbara Thomas
 Genevieve Thompson
 Kristin Tigner
 TLC Dental
 Marilyn Tokosh
 Tommy Bahama
 Angela Torok
 Deborah Torriani
 Carol Trani
 Debbie Trapani
 Michael and Deborah Troner
 Scott Tsukuda
 Tycos Matching Gifts Program
 UBS Employee Giving Program
 Robert and Marlene Uchin
 Unity Church of Pompano Beach
 Universal Orlando Resort
 Suzanna Valdez
 Maria G. Vallejo
 Barbara Van Voast
 Patricia Vanik
 Diego Vega
 Village Tavern, Inc.
 Dave Villari
 Barbara Vlak
 James Walker
 Rose A. Walker-Williams
 Barbara Wall
 Shelly Waltman
 Kim Waltuch
 Angela Ward
 Leanne F. Warmstein
 Bharat Warrior
 Lawrence and Ann Wasserman
 Douglas Weaver
 Hannah Weintraub
 Steve Weishoff
 Barton and Shirley Weisman
 Peter Weltz
 Lori Welch
 Wells Fargo - Las Olas
 Wells Fargo Community Support Campaign
 DoTopia
 George and Monica Wesolowski
 Weston Cosmetic Surgery
 Jane Wexton
 Charles White
 Gary White
 Raquel C. White
 Robert and Vera Willner
 Andrew Wilson
 Paula Wilson
 Stacy Win
 Daniel and Lynne Wines
 Winterfest, Inc.
 Christine M. Wolf

Bruce Wolff
 Ghita Wolpowitz
 Wonderful Giving
 Tom and Linda Woodley
 Ulla Woolhiser
 Kerriann Worley
 Georgiana Wright
 Wright By The Sea Resort
 Wyndham Deerfield Beach Resort
 Wynwood Kitchen & Bar
 George and Dawn Young
 Tricia Young
 Dennis Zalupski
 Louise Zech
 Myrna F. Ziegler
 Zoell Pilates & Wellness

Get Involved. **Donate.**



SUPPORT



DONATION DRIVE



VOLUNTEER



SPREAD THE WORD



WOMEN IN DISTRESS
OF BROWARD COUNTY, INC.

JIM & JAN MORAN FAMILY CENTER

Crisis Line: 954-761-1133 | Phone: 954-760-9800 | Fax: 954-832-9487 | TTY/TDD: 954-527-5385

P.O. Box 50187 Lighthouse Point, FL 33074

Learn more at www.womenindistress.org

Please remember Women In Distress in your will and estate planning.