



# OpenStage T

## Open Unified Communications telephones

OpenStage is the award-winning telephone range from Unify that sets standards for serviceability, design and reliability at the office workplace. These stylish devices provide an intuitive and top-notch communication experience including features that increase productivity, starting from the entry models up to the models for professional users.

The OpenStage telephones provide high utility value for user-oriented communication solutions.

### Serviceability

The functionality and user interface of the OpenStage product family have an intuitive design. The devices are capable of working together with other devices, thereby enabling access to various services and applications.

Soft-labeled (paperless phone) touch sensor keys can be easily programmed for specific phone functions, line/feature access or speed dial. An ideal solution for office applications where mobility and flexibility are important factors.

Fixed feature/function keys enable easy access to frequently used phone functions such as Drop/Release, Call Forwarding, Speaker, and dedicated applications such as Phonebook, Call Log/History, Answering Machine.

### Cooperation with other devices

Today's workstations frequently feature many different device types (such as PCs, mobile phones and headsets). OpenStage has built-in interfaces (such as USB and Bluetooth) to interwork with these devices.

The main aspects of the OpenStage design include different material and color variations.

### Phone models

The OpenStage TDM phone family comprises the following phone models:

**OpenStage 10 T    OpenStage 40 T**  
**OpenStage 15 T    OpenStage 60 T**  
**OpenStage 30 T**

### Product family

The OpenStage TDM phones give you fast and convenient access to the wide range of Unify communication platform features via the tried and tested U<sub>P0/E</sub> system interface with extended CorNet-TS protocol. New software versions for the phones can be updated via the corresponding management systems and the interface (exception OpenStage 10 T). All OpenStage phones can be software-customized with the logo of the individual customer or partner (exception OpenStage 10 T).

OpenStage 10 T, 15 T and 30 T are downwards compatible and can be operated like optiPoint phones.



**OpenStage 60 T in ice blue**

The OpenStage product family has been designed to provide a maximum degree of serviceability and to simplify the implementation of features. Innovative control elements (touchkeys, embedded colored LEDs, TouchSlider for volume control and TouchGuide Navigator) as well as the large swivel graphic color TFT display with LED backlighting make user interaction easier.

### Acoustics

OpenStage incorporates the latest developments in leading edge acoustics to ensure delivery of the very best voice quality on the handset and speakerphone. A high quality speakerphone is built in all models as standard (exception OpenStage 10 T).

## OpenStage 10 T

OpenStage 10 T is the device of choice wherever only the most essential telephone functions are required. The telephone is suitable for use in reception areas and warehouses, for example.

### Keys

- Dialing keypad
- 3 freely programmable keys with red LEDs
- Speaker key with red LED
- Control keys +/-

### Acoustics

- Open listening

### Wall mounting

Can be mounted on the wall.

### Colors

Ice blue or lava



OpenStage 10 T

## OpenStage 15 T

OpenStage 15 T is a full-featured speakerphone with display and illuminated feature keys that could be used for up to 8 line appearances, for example.

### Display

- Graphic display, 2-line monochrome (non swivel)

### Keys

- Dialing keypad
- 3 fixed function keys with red LEDs
- 8 freely programmable keys with red LEDs
- Key labeling via paper inserts
- Control keys +/-
- 3 navigation keys

### Acoustics

- Handsfree (full duplex)

### Interfaces

- OpenStage key modules

### Wall mounting

Can be mounted on the wall.

### Colors

Ice blue or lava



OpenStage 15 T

## OpenStage 30 T

OpenStage 30 T can be adapted to a wide range of workplace environments. This makes it the ideal solution for office environments or for call center applications.

### Display

- Graphic display, 2-line monochrome (non swivel)

### Keys

- Dialing keypad
- 8 fixed function keys (partly equipped with red LEDs)
- 8 freely programmable keys with red LEDs
- Key labeling via paper inserts
- Control keys +/-
- 3 navigation keys

### Acoustics

- Handsfree (full duplex)

### Interfaces

- Headset jack
- USB device
- OpenStage key modules

### Wall mounting

Can be mounted on the wall.

### Colors

Ice blue or lava



OpenStage 30 T



## OpenStage 40 T

The large swivel display of this telephone is equipped with programmable touch/sensor keys with functions that are shown on the display (paperless phone).

This makes it the ideal solution for shared workplace use and flexible office applications.

### Display

- Tilttable graphical display, 6 lines monochrome, backlit (LED)
- Additional optical call alert

### Keys

- Dialing keypad
- 8 fixed function keys (partly equipped with red LEDs)
- 6 free-programmable soft-labeled touch/sensor keys with red LEDs
- Control keys +/-
- 5-way navigator

### Acoustics

- Handsfree (full duplex)

### Interfaces

- Headset jack
- USB device
- OpenStage key modules

### Wall mounting

Can be mounted on the wall.

### Colors

Ice blue or lava



OpenStage 40 T

## OpenStage 60 T

Offers top-notch functionality and innovations, combining a maximum of usability with a clear, intuitive and sleek design. Its functionality and personalization options make this phone the first choice for boss/secretary environments and people interacting with other devices like mobile phones.

### Display

- Tilttable graphical color TFT display
- 320 x 240 pixels (QVGA), backlit (LED)
- Additional optical call alert

### Keys

- Dialing keypad
- 6 fixed function keys (partly equipped with blue LEDs)
- 8 freely programmable touch/sensor keys (illuminated) with blue LEDs (function, speed dial or line keys)
- 6 mode keys (touch/sensor keys, illuminated) with blue or blue/white LEDs (e.g. to start applications)
- TouchSlider for volume adjustment with blue/white LEDs
- TouchGuide for navigation



OpenStage 60 T

### Acoustics

- Handsfree (full duplex)
- Polyphonic ring tones

### Interfaces

- Headset jack
- Bluetooth V2.1
- USB host and device
- OpenStage key modules
- External power supply required

### Colors

Ice blue or lava



## Accessories

A comprehensive range of accessories is available for the respective OpenStage models.

### OpenStage Key Module 15

- 18 additional freely programmable keys with LEDs; function, speed dial or line keys
- Key labeling via paper inserts
- In ice blue or lava
- For OpenStage 15 T, 30 T, 40 T (max. 1 unit can be connected)



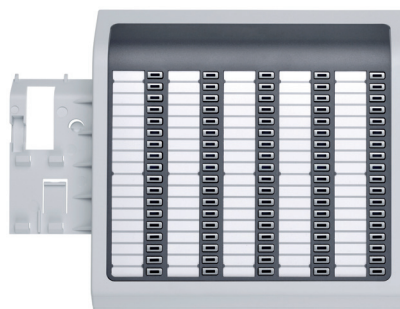
### OpenStage key modules 40 and 60

- 12 additional freely programmable keys with LEDs; function, speed dial or line keys (2 layers)
- Large graphical display for key labeling
- In ice blue or lava
- For OpenStage 40 T and 60 T (max. 2 units can be connected)



### OpenStage Busy Lamp Field 40

- 90 additional freely programmable keys with LEDs; function, speed dial or line keys
- Key labeling via paper inserts
- In ice blue or lava
- External power supply required
- For OpenStage 30 T, 40 T, 60 T (max. 1 unit can be connected)



### Wall mounting kit

- In ice blue or lava
- For OpenStage 10 T, 15 T, 30 T, 40 T

### OpenStage Manager

Free software - OpenStage Manager - for communication and data transfer between PC and phone (via USB) is available for OpenStage 60 T that allows users to carry out the following functions:

- Administer the OpenStage Phone Book:  
Synchronize contacts with Microsoft Outlook,  
Edit the phone book,  
Add pictures.
- Load screensaver pictures
- Manage ring tones
- Save and restore personal settings

## Personalization

OpenStage 60 T provides users with various options for customizing the phone to their individual requirements:

- Loading of MP3 ring tones from the PC
- Load pictures from the PC and assign to contacts
- Change the phone appearance using different topics/skins (2 skins are provided)
- Create a personal screensaver

## Supported communication platforms

OpenStage TDM phones can be operated on:

- OpenScale Business
- HiPath 3000
- OpenScale 4000
- HiPath 4000

## Public telephone network access/acoustics/voice quality

- FCC Part 68/CS-03 (Technical Requirements for Connection of Terminal Equipment to the Telephone Network)
- TIA/EIA-810A (Transmission Requirements for Narrowband VoIP and Voice over PCM Digital Wireline Telephones)
- TBR8 (Telephony 3.1 kHz telester-vices; Attachment requirements for handset terminals)
- Hearing aid capability (HAC) according to TIA/EIA-504A (Electronic Industries Association recommended standard RS-504 magnetic field intensity criteria for telephone compatibility with hearing aids)

## Technical data

OpenStage	10 T	15 T	30 T	40 T	60 T
<b>Display</b>					
Tiltable display (pixel, type)	-	2 lines, 205 x 41 pixels (not tiltable, fixed viewing angle of 30°)		6 lines, 240 x 128 pixels, monochrome	320 x 240 pixels (QVGA) color TFT 5.7"
Backlit display	-	-		Yes (LED)	Yes (LED)
<b>Keys/LEDs</b>					
Fixed function keys (pushbuttons, partly illuminated)	1 1 red LED	3 3 red LEDs	8 6 red LEDs	8 6 red LEDs	6 5 blue LEDs
Freely programmable keys	3 pushbuttons with red LEDs	8 pushbuttons with red LEDs		6 sensor keys with red LEDs	8 sensor keys with blue LEDs
Mode keys (touch/sensor keys, illuminated)	-	-		-	6 with blue or blue/white LEDs
Additional optical call alert	-	-		Red	Blue
Volume adjustment	+/- keys				TouchSlider blue/white LED
Navigation	-	3 navigation keys		5-way navigator	TouchGuide
<b>Audio</b>					
Open listening	Yes	Yes		Yes	Yes
Full duplex handsfree	-	Yes		Yes	Yes
Polyphonic ring tones	-	-		-	Yes
Echo suppression for local echo (AEC) full duplex	-	Yes		Yes	Yes
<b>Interfaces</b>					
• Bluetooth V2.1 (vCard support, hands-free and headset profiles)	-	-		-	Yes
Headset jack for corded/cordless headsets (121TR9-5*)	-	-	Yes	Yes	Yes
USB host	-	-		-	Yes
USB device (1 <sup>st</sup> Party CTI)	-	-	Yes	Yes	Yes
Line interface (CorNet-TS protocol, software download via U <sub>P0/E</sub> )	U <sub>P0/E</sub> (no software download)	U <sub>P0/E</sub>		U <sub>P0/E</sub>	U <sub>P0/E</sub>

OpenStage	10 T	15 T	30 T	40 T	60 T
<b>Expansions</b>					
OpenStage key modules (ext. power supply required when using key modules 40 and 60)	-	Yes Max. 1		Yes Max. 2	Yes Max. 2
OpenStage Busy Lamp Field 40 (ext. power supply required)	-	-	Yes Max. 1	Yes Max. 1	Yes Max. 1
OpenStage power supply (country-specific models available)	Yes	Yes		Yes	Yes (required in all cases)
Wall mounting kit	Yes	Yes		Yes	-
<b>Applications</b>					
Local personal phone book • Enter up to 1,000 personal contacts with different telephone numbers • Combine contacts into groups • Add pictures to contacts	-	-		-	Yes
Local call list • See the list of missed, forwarded, dialed and received calls • Dial from the call log list	-	-		-	Yes
Save and restore personal data using a PC or USB memory stick	-	-		-	Yes
OpenStage Manager support	-	-		-	Yes
<b>Markings, certificates and standards</b>					
Europe	CE mark				
USA/Canada	NRTL mark				
Safety standards	IEC60950-1, EN60950-1 UL60950-1, CAN/CSA-C22.2 No.60950-1				
EMC standards	CISPR22 Class B, CISPR 24 EN55022 Class B, EN55024 FCC Part 15 (CFR 47) Class B				
<b>Technical data</b>					
Dimensions Width x height x depth (mm)	70 x 210 x 220	70 x 240 x 220		70 x 270 x 220	70 x 300 x 220
Weight (kg)	0.63	0.777	0.782	1.120	1.235
Colors	Ice blue or lava	Ice blue or lava		Ice blue or lava	Ice blue or lava
Storage conditions	-40 °C to +70 °C (-40 °F to +158 °F) [ETSI EN300 019-2-2]				
Operating conditions	+5 °C to +40 °C (+41 °F to +104 °F)				



