

a voice  
for the natural  
landscaping  
movement



## JOURNAL

MARCH/APRIL 2010  
VOL. 23, NO. 2

### inside

Notes from the President:  
*Journal* to go online or  
stay in print? 2



Access the members-only  
pages of the Wild Ones  
web site. 3

Wild Ones National seeking national  
board nominees. 3

Native plants take on local weed and  
landscaping ordinances. 4

H<sub>2</sub>O pavers. 5

Next Generation: Make  
friends with a maple. 6



Invasives on the Horizon:  
The road more traveled –  
by invasive plants. 7

Pat Armstrong: Wild Ones Shooting Star.  
8

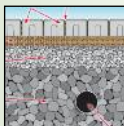
Native Plants: Beyond the bird feeder –  
pussy willow. 9

Wild Center wish list. 10

Chapter Notes. 10

WILD Center wish list. 10

Plant-insect interactions:  
Willows and pollinators.



11

Wild Ones on Facebook. 12

The Meeting Place: Chapter contact  
information. 16

North American Native Plant Society  
celebrates 25 years 17

2010: The year to grow  
Wild Ones. 17

Upcoming Activities. 19

Thank You. Back cover.



Working toward our next  
30 years restoring native plants  
and natural landscapes.

## Pennystone Gardens



A woodland path weaves between the banks of artfully displayed native plants. The grass is largely undergrown by mosses.

Story and photos by Geoff Mehl

Originally a conventional personal shade garden, with an emphasis on hostas and hybrid azaleas, Pennystone is a series of connected gardens that now concentrates on the study and propagation of woodland species that are native to Monroe County, Pennsylvania.

As the gardens evolve and expand on the 3-acre site, the list of included species grows, and now numbers well more than a hundred.

Some gardens still include original collections, and use native species as companions and accents. Others are limited to purely upland natives that would logically appear in ridgetop forests in the glaciated ridge and valley province of north-central Monroe County. The site is at an elevation of 1,325 feet above sea level, and ranges from a 5 to 15 percent grade.

New garden designs adapt to indigenous species: a variety of canopy trees, *Kalmia latifolia*, patches of *Epigaea repens*, *Cypripedium acaule*, *Gaultheria procumbens*, and a variety of mosses. Principles of sustainable landscaping apply, not only for the comfort of the collection, but also groundwater management and supporting life forms that balance an upland ecosystem.

Much of the decorative landscape is fenced to exclude white-tailed deer, which are out of balance in the region. However, new areas under development are investigating how to landscape with native species that deer find unpalatable and temporary localized fencing to permit seedling trees to get to a point that the forest will have a future generation.

The local soil is Oquaga-Lackawanna channery loam, with a high concentration of sand and glacial till. Channery refers to the thin, flat, coarse fragments of sandstone, limestone, or schist that may be up to 6 inches in diameter. As is typical of many chestnut-oak

CONTINUED ON PAGE 12

## The *Wild Ones Journal*: Online or Print? That Is the Question.



At our 2009, 4th quarterly national board meeting, Bret Rappaport had a great idea that would allow Wild Ones to make ends meet financially, while also helping the planet: get modern and go to an online-only *Wild Ones Journal*. A few of our members already view the *Journal* online, and enjoy seeing the full-color photos as they access the *Journal* from the members-only section at [www.for-wild.org](http://www.for-wild.org). This would save us over \$21,500 a year, which represents a significant part of our total annual budget.

But some of our members don't have access to the Internet, and many of our members tell us they prefer to hold the *Journal*, on old fashioned, tangible paper – while they curl up in a chair, or ride the bus. And how would we hand out sample copies? For the moment, the idea was voted down.

Early in 2010, the national Wild Ones budget-setting process took place in earnest. As the economy continues to make life challenging for many, our membership at the end of December was around 2,700 – dues are our primary source of income. Our more typical level, closer to 3,000, is just enough to allow us to publish, print, and mail six hard-copy issues of the *Journal* each year. When membership levels are down, expenses must be reduced to maintain a balanced budget and avoid raising membership dues. Online issues were back on the table.

At mid February, as this issue of the *Journal* goes to press – thanks to *extremely* generous donations from chapters (*thank you in particular Root River and Oakland*) – and what is appearing to be

the start of a successful membership drive, the board is confident that we will indeed be able to provide at least five, regular, printed issues of the *Journal* in 2010. A decision on the sixth issue will be made closer to the end of the year, when funding is clear.

While you are receiving a printed hard copy, we're also going to notify you when the online version of the current issue is available on the members-only web page. Please give this a try and form an opinion that is based on actual experience. Tell us what you think about the electronic version of the *Wild Ones Journal*. Those of you who don't have an e-mail address on record, please take care of this by sending an e-mail from your address to [wildcenter@newbc.rr.com](mailto:wildcenter@newbc.rr.com), letting us know that this is a new address. If there is no way that you will have a personal computer available to you in the near future, do some exploring in your local library, and get familiar with their computer system. You might find that this works quite well for you. We will need to have a significant number of members opting to go with electronic issues before it can be a truly money-saving endeavor. If we only cut our printed numbers by half, we will save very little money on printing and mailing.

While many non-profits are really struggling, we are holding our own financially, while enjoying many new faces at chapter meetings, getting lots of hits on our web site, and plenty of calls and visits at Wild Ones HQ in Wisconsin. And, the *Journal* will continue to arrive at your mailbox with useful, detailed information on native plants and sustainable landscaping.

It's almost spring. Let's have a race to see who can find the first skunk cabbage. \*  
Carol Andrews, Wild Ones National President ([president@for-wild.org](mailto:president@for-wild.org))

Wild Ones: Native Plants, Natural Landscapes promotes environmentally sound landscaping practices to encourage biodiversity through the preservation, restoration, and establishment of native plant communities. Wild Ones is a not-for-profit, environmental, educational, and advocacy organization.

### NATIONAL OFFICE

#### WILD Center

2285 Butte des Morts Beach Road  
Neenah, Wisconsin 54956

#### Executive Director

Donna VanBuecken  
P.O. Box 1274, Appleton, WI 54912-1274  
877-FYI-WILD (394-9453)  
920-730-3986  
Fax: 920-730-3986  
[execdirector@for-wild.org](mailto:execdirector@for-wild.org)

#### President

Carol Andrews • 218-730-9954  
[president@for-wild.org](mailto:president@for-wild.org)

#### Vice President and Communications Committee Chair

Chris McCullough • [info@for-wild.org](mailto:info@for-wild.org)

#### Secretary and Past President

Joe Powelka • 608-837-6308  
[secretary@for-wild.org](mailto:secretary@for-wild.org)

#### Treasurer

Marty Rice • 952-927-6531  
[info@for-wild.org](mailto:info@for-wild.org)

#### Past President

Bret Rappaport  
[info@for-wild.org](mailto:info@for-wild.org)

#### Seeds for Education Director

Mark Charles • 734-973-0684  
[sfedirector@for-wild.org](mailto:sfedirector@for-wild.org)

#### Web Site Coordinator

Peter Chen • [wdmgr@for-wild.org](mailto:wdmgr@for-wild.org)

#### MEETING COORDINATOR

Mary Paquette • 920-994-2505  
[meeting@for-wild.org](mailto:meeting@for-wild.org)

#### BOARD MEMBERS

Carol Andrews, Minnesota, 10  
Patricia Armstrong, Illinois, 12  
Kathy T. Dame, Connecticut, 12  
Steven Windsor, Illinois, 12  
Tim Lewis, Illinois, 12  
Chris McCullough, Ohio, 12  
Carol Phelps, Michigan, 12  
Diane Powelka, Wisconsin, 10  
Joe Powelka, Wisconsin, 10  
Bret Rappaport, Illinois, 12  
Maryann Whitman, Michigan, 10  
Marty Rice, Minnesota, 10  
Karen Syverson, Wisconsin, 12  
Scott Woodbury, Missouri, 10  
Janet Allen, New York, 10

#### HONORARY DIRECTORS

Neil Diboll, Wisconsin, 13  
Bonnie Harper-Lore, Minnesota, 13  
Lorraine Johnson, Toronto, Canada, 11  
Darrel Morrison, FASLA, New York, 11  
Lorrie Otto, Washington, Lifetime  
Guy Sternberg, Illinois, 11  
Doug Tallamy, Delaware, 13

*Wild Ones Journal* (ISSN 1551-9155) is published bimonthly by Wild Ones: Native Plants, Natural Landscapes. Views expressed are the opinions of the authors. *Journal* content may be reproduced for non-profit educational purposes as long as the *Journal* is credited as the source. Individual articles that carry a copyright are the property of the author and cannot be reproduced without the author's written permission. No artwork may be reproduced, except to accompany its original companion text, without written permission of the illustrator or photographer. Contact editor if in doubt about use rights. Manuscripts and illustrations are welcome; Wild Ones does not pay for articles, photos or illustrations. For guidelines for submitting material, contact editor or see Wild Ones web site. Advertisers: Contact National Office for rates and schedule.

#### WILD ONES JOURNAL EDITOR

Maryann Whitman • 248-652-4004  
[journal@for-wild.org](mailto:journal@for-wild.org)  
(Please indicate topic in subject line.)

#### WILD ONES JOURNAL STAFF

Janet Allen, Contributing Editor  
Barbara Bray, Contributing Editor  
Mariette Nowak, Contributing Editor  
Donna VanBuecken, Contributing Editor

Wild Ones recommends that you patronize businesses that support our policies regarding species provenance and habitat preservation. The appearance of advertising in the *Journal* does not constitute an endorsement by Wild Ones of any organization or product.

Copyright © 2010 by Wild Ones.

*Printed on recycled paper.*

## Writers & Artists

**Geoff Mehl** is a PAL member from northeastern Pennsylvania.

**Kelly Rice** is a Senior Ecological Resource Specialist, for JFNew. She is a member of the River City - Grand Rapids Area (MI) Chapter of Wild Ones.

**Barb Bray** is a member of the North Oakland (MI) Chapter, and a Contributing Editor of the *Journal*.

**Allison Vaughn** (photo page 7) is a member of the St. Louis Chapter (MO).

**Mariette Nowak** is a Contributing Editor of the *Journal*, and a member of the Milwaukee-Southwest Wehr (WI) Chapter.

**Jennifer Hopwood** is a member of the St. Louis (MO) Chapter of Wild Ones. She is the Midwest Representative of the Xerces Society.

### Access the Members-Only Pages of the Wild Ones Web Site

To access the members-only pages (secure pages of the web site) you must first register. To register, go to the upper right-hand corner of the for-wild.org home page and click on the Members Login button. In the next window, go to the third line which says "member email not registered? Register password for member here." The window which appears next gives you the opportunity to register your e-mail address. It must be the same e-mail address you have shared with the Wild Ones HQ office for your membership data. You'll need to make up a password that you will remember. The Internet will search the Wild Ones database to see if your e-mail address matches with what we have on record, and if you're active, and if it's satisfied it will allow you to go to the next step. Here you will need to answer a couple of pretty simple questions to maintain security. Once they are answered, you will be sent back to the log-in page from where you should be able to successfully access several links among which is the *Wild Ones Journal*.



## Spring

Everything is blooming most recklessly; if it were voices instead of colors, there would be an unbelievable shrieking into the heart of the night. *Rainer Maria Rilke.*

## Wild Ones National Seeking National Board Nominees

The Wild Ones national board members have the responsibility to direct the management of the affairs of Wild Ones Natural Landscapers Ltd, aka Wild Ones: Native Plants, Natural Landscapes. Would you be interested in serving on the board?

The Wild Ones national board is made up of 15 members with staggered terms from within the Wild Ones membership.

This is the year we elect seven board members to the national board.

If you're interested in serving on the board, we'd like to hear from you.



### Here are the board member qualifications

1. Shall be willing to serve as a Director on the national Board of Wild Ones.
2. Shall be able to attend at least four meetings per year for four years. Meetings are usually held on Saturday mornings. Attendance may be in person, by conference or web call, or by proxy when special arrangements have been made with the president.
3. Shall be willing to serve on the Executive Committee as a national officer or as a national committee member or chair during his/her term as a Director.
4. Experience in serving on a board or as an officer of another organization or a Wild Ones chapter is helpful, but not required.
5. Shall be willing to share his/her vision of the future of the Wild Ones, and help work toward it by participating in national committee work.

### Board member responsibilities

It is the responsibility of the board members to direct the affairs of Wild Ones, using the Chapter Guidelines, Policies, and board meeting resolutions, all of which are available on the secure pages of the Wild Ones web site. Documentation for quarterly Board meetings and Annual Membership Meetings, as well as Executive Officer Committee meetings are made available to all Board members either by e-mail or on the Chapter Guidebook web pages.

### Meetings

Board members are expected to attend four regular meetings of the Board of Directors each calendar year. Meetings may be hosted by various chapters, at locations of their choice but may be attended by conference call. One of the four meetings is the annual meeting of the Directors (Q3) which occurs in conjunction with the annual meeting of the entire membership. All Board members shall attend all Board meetings either in person or by phone- or web-conference, unless prior arrangements to authorize a proxy are made.

All Board members are expected to participate in all meetings by offering discussion and communicating their concerns either in person or by phone- or web-conference, or by e-mail prior to the meeting.

The regular Board meeting calendar year is established at the annual meeting, including the hosting chapter and location. Dates will be committed by Q4 Board meeting following the Annual Membership Meeting. Agendas and backup materials for each meeting are made available to Board members prior to each meeting.

Non-Executive Committee Board members may, but are not required to, attend Executive Committee (XO) meetings. XO meetings are held at the request of the President, and do not have a set date or time. Specifically, they will be called prior to a quarterly Board meeting or otherwise as needed. Conference or web-calling capability will be provided.

### Informal action by directors

In between regularly scheduled Board meetings, the President or Executive Director may direct communications to the Board of Directors by e-mail or other media on various items which require a quick response. All Board members are expected to respond to these communications.

Contact us at [execdirector@for-wild.org](mailto:execdirector@for-wild.org) if you have questions or if you'd like to accept nomination to the Wild Ones national board. \*

# Native Plants Take On Local Weed and Landscaping Ordinances: A case study from southwest Michigan.

By Kelly Rice, PWS

In January, 2006, our family purchased and moved into a re-modeled farm home on four acres in rural southwestern Michigan. The property consisted of approximately 1-1/2 acres of mesic-hardwood forest, 2 acres of non-native cool-season grasses and old field weeds that had been continuously mowed, and 1/2 acre of traditional yard that surrounded the home. The parcel is positioned in the landscape between a 40-acre active hay field and a 60-acre forested parcel, home of a tributary to Crockery Creek, which ultimately drains into the Grand River and Lake Michigan. It's fair to say this area is rural.

That spring, we started a habitat-restoration project targeting the entire mowed cool-season-grass area and approximately half of the lawn. The lawn area in front of the home was specifically targeted to create a natural buffer between our pets and children and the 55-mph traffic on a busy road, approximately 70 feet away.

During the following four growing seasons, we put substantial effort into controlling and eradicating numerous invasive woody and herbaceous plant species, while seeding in and installing native plants in a mixed-grass and forb-prairie community setting. We managed our habitat through prescribed burning, selective herbicide treatment, and occasional mowing. In 2009, an informal fall survey identified over 90 native plant species within our prairie community that possessed a Floristic Quality Index (FQI) of 27.1.

The creation of our open-habitat area has yielded wonderful benefits. Resident and migratory songbirds take advantage of its abundant insect and seed supply, on summer evenings bats forage directly over our prairie, and turkeys and other wildlife species find safety in unmowed places to nest and take cover. Fertilizers and pesticides have been eliminated from the environment, with the exception of target application on invasive-species stems. Water runoff is naturally filtered through several hundred feet of native vegetation before it enters the creek, and no resources or fuel are used, since supplemental watering and mowing have been eliminated in this area. As property owners and biologists, we are most pleased.

During preparation of the planting areas in 2006, we spoke with our primary neighbor to the east, and asked him to stop by to discuss our intentions and methods. This neighbor happens to be part of the local township government. We talked about the many benefits of native plants, and how they could help filter nutrients (fertilizers) out of the waters that were leaving his property's non-native sweet-vernal-grass hayfield, on the way to Crockery Creek. We also asked that he stop mowing our field areas, something that the previous property owner had allowed. Our neighbor told us that he did not accept what we were doing, but would tolerate it. Not an auspicious beginning, but we were hopeful.

In October, 2007, this neighbor called and offered to "mow the crap out of our yard" before he put his brush hog away for the winter.

He said that his acquaintances were commenting that our property looked "unkept." We offered to talk to anyone who thought our yard looked messy, and explain the structure and benefits of our newly created habitat. We told of the neighbors, and even total strangers, who stopped by to pick wildflowers, and tell us how much they liked our yard.



That year, Crockery Township passed a Grass, Leaves, Weeds, and Landscape Maintenance Ordinance (Ordinance No. 2007-04). It attempts to regulate property maintenance to "secure the public health, safety, and welfare of the Township and its inhabitants." In October, 2009, we received a letter notifying us that the Township considered our home to be in violation of the ordinance, and that our parcel was an "eyesore to the citizens of the Township." We were given five days to bring our property into compliance, or, we were told, the Township would do it for us at our expense.

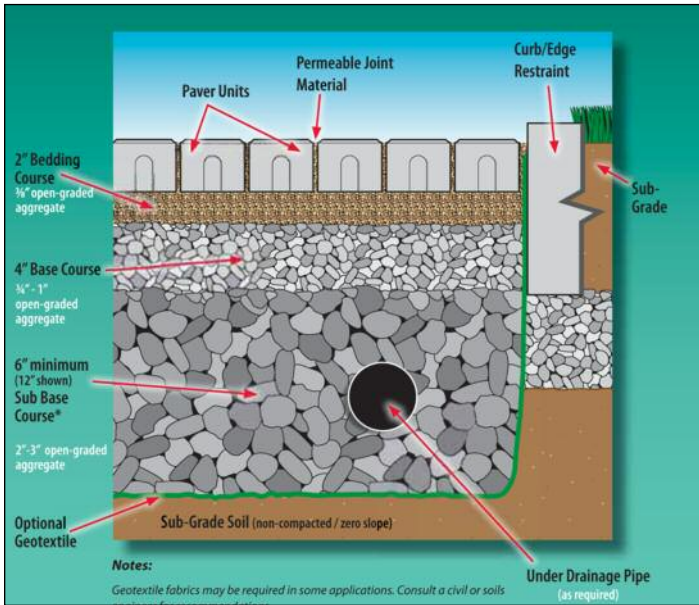
We contacted an attorney who scheduled a meeting with the Township. Because neither the letter of notice, nor the ordinance itself clearly defined how our property threatened the "public health, safety, and welfare of the Township and its inhabitants," our approach at the meeting was to ask the Township to demonstrate how we were non-compliant. We presented a vast amount of information on the benefits of native plants, mentioned that natural landscapes actually enhance property values, and disputed every ordinance myth on tall vegetation harboring rats, vermin, noxious weeds, or presenting fire hazards. In the end, the Township fell back on the argument that our field just "didn't look good" to them during the plants' dormant months. Especially the front yard.

To help ease the situation with our neighbors, we are proposing a compromise for a small area that fronts CONTINUED ON PAGE 13



Kelly's house is backed by woods and a creek. The meadow planting serves as a buffer between the house and the paved country road that lies 70 feet to the west, and agricultural fields 100 feet to the west.

## H<sub>2</sub>O Pavers



Having remodeled around our entryway, and having added a handicap ramp, this past summer we needed to construct new entryway hardscape. Our goals were twofold: meet ADA (Americans With Disabilities Act) accessibility requirements (easy), and use environmentally friendly materials (more difficult). Working with long-time Wild Ones business member and supporter, Lake Shore Cleaners, we chose H<sub>2</sub>O permeable pavers.

The pavers were attractive for a number of reasons in addition to Lake Shore Cleaners excellent pricing (Thank you very much, Ron Wolff.). The pavers are produced in Wisconsin, so transportation costs were limited. They are durable, and can handle our Wisconsin winters and snow removal. After the twenty-year life span of the installation, the pavers can be taken up and put back down, instead of ending up in a landfill. And the light colors help dissipate any heat-island effect. They are an all-around ecologically sound product.

And there's more. They take care of any possible drainage problems that might develop around our front entrance. Rainwater and snow-melt flows between the pavers into a stone-filled reservoir on which the pavers are laid. Here the water is naturally filtered and diverted into a raingarden at the edge of the birch tree, where it infiltrates into the soil that has been planted with appropriate native plants.

Still more. We used these same pavers at the garage-service door. Here, the rain-gutter downspouts from the building have been channeled into an underground system of pipes, which includes a quasi French drain (a concealed underground channel). This system of pipes takes the rainwater away from the building foundation, and funnels it artfully downhill to the raingarden behind the building. All our stormwater is filtered through the soil before it ever makes it to the marsh that lies between us and Little Lake Butte des Morts. This is the goal of LEED certifiable stormwater management (see cover story, May/June 2009 *Wild Ones Journal*).

Although Lake Shore Cleaners installed the H<sub>2</sub>O pavers for us, they can be easily installed by a do-it-yourselfer. To find out more go to [www.for-wild.org/eco/center/entryway.html](http://www.for-wild.org/eco/center/entryway.html). \*



## Get Involved, Stay Involved, With Wild Ones

There are many ways to help Wild Ones promote environmentally sound landscaping practices to preserve biodiversity through the preservation, restoration and establishment of native plant communities.

**Annual Support:** Wild Ones Champions provide dependable income for Wild Ones programs by making annual contributions. Payments are made by check, or by convenient monthly deductions via credit card or direct debit from a designated financial account.

**Bur Oak Circle:** Donors who make annual gifts of \$1,000 or more.

**Oak Savanna Circle:** Members who have loyally supported Wild Ones for at least 15 years or more.

**Employee Matching Gift Program:** Many companies and organizations will match employee contributions.

**Special Gifts and Heritage:** The Wild Ones Legacy Program provides the opportunity to gift appreciated stock, real property, in-kind gifts, IRA-rollover gifts (option through December 2007 per the Pension Protection Act of 2006) and multi-year commitments. Bequests, charitable gift annuities, trusts and other planned giving vehicles provide significant support to Wild Ones while also benefiting the donors and their families.

**Volunteer:** More than 4,000 people annually volunteer their time and energy for land conservation, community garden plantings, and for the WILD Center.

**Lifetime Members:** Long-term commitment to Wild Ones mission and its goals.

### Contact Us

For more information about the *Get Wild Stay Wild Program*, please contact Donna VanBuecken, Executive Director, Wild Ones, P.O. Box 1274, Appleton, Wisconsin 54912, 877-394-9453 [execdirector@for-wild.org](mailto:execdirector@for-wild.org), or see our web site: [www.for-wild.org/legacy/](http://www.for-wild.org/legacy/).



**STICK WITH WILD ONES**

# Make Friends With a Maple

By Barb Bray

There are lots of different kinds of maple trees, and just about any one of those maples could become a great friend to you, to your yard, and to the creatures who live there.

Some people say a good friend is hard to find. Maybe they haven't looked in the right place. Every day, when I gaze out my kitchen window, I see a good friend standing there. A friend who is fun, supportive, and has good taste. My good friend's name is Maple. Ask any child about my friend, Maple, and they will tell you amazing stories about her.

They might know Maple by a different name. Maybe they confuse her with Oak, or they might call her "the Canada leaf tree," but they know Maple well because she has a sense of humor. In the summer time, Maple sends her tiny twirling helicopters raining down on the ground below. Adults know them as seeds – future baby maple trees, packaged in a winged key.

Children, however, see them as toys, sailing through the air, just asking to be caught. Once in hand, who can resist tossing them up again? Thousands and thousands of helicopters land on the ground. What's a boy or girl to do? Split the helicopter in half where the tiny seed sits, and you can stick them on your nose or on the ends of your fingers. If you want to see what that looks like, check out the book, *Maple Tree*, by Millicent E. Selsam.

Children aren't the only ones who call Maple a friend – animals are fond of her too. My friend, Maple, is actually a silver maple tree. Silver maples are fast-growing maples with softer wood than sugar maples or red maples. Sometimes a storm will break a branch off the tree. Eventually fungus moves in, and starts to decompose the spot where the branch was once attached. Woodpeckers stop by and peck away at the rotting wood, hunting for insects. As the hole grows bigger, it attracts animals searching for shelter. Maybe a squirrel, raccoon, or even an opossum moves into the hole. A family of owls might also find it attractive. Small animals, such as toads or spiders, find shelter at the base of Maple, where a small hole sometimes forms near the roots.

Leaves on Maple shelter bird nests of all kinds, and provide nurseries for hundreds of different kinds of insects, including one of my favorites: inchworms. Our friend,



Maple helicopter. Photo courtesy of Kristian Peters.

Maple, is a generous provider of homes to creatures of many kinds.

In the winter time, Maple seems fast asleep. I walk across the crispy-cruled snows of late February, looking around for signs of life. There are clues all around that Maple is awakening from her wintertime "slumber." The icicles on my overhang are dripping and melting, woodpeckers are rat-a-tat-tat-ing for insects, and skunks are on the prowl again. During the winter, Maple's roots store the sugar that was made by the leaves the past summer.

As the ground thaws, water becomes available for the roots to absorb. As the water moves through the roots it picks up some stored sugar, and this mixture, that we call sap, rises in the tree to feed the buds on the ends of the branches. It is this miracle of maples I love best: the promise of springtime and a sweet treat of maple syrup. Although sugar maples have sweeter sap, you can still make maple syrup from the sap of a silver maple. It just means boiling a little bit more sap to get the same amount of syrup.

It's not just people who enjoy the tasty treats from maple trees. Squirrels often can be spotted in maples, biting the tips off branches to lick the sweet sap. They also eat the buds, flowers, and later, the maple seeds inside the helicopters. Maples also are an important early-spring food source for many pollen-eating insects, especially honey bees. Pollen is a good source of protein, and helps the hive to recover after winter. Look for stoneflies on maple trees. They start their lives in the water, and then

emerge as adults in early spring. You can find them at tap holes, or on bark of maple trees, especially if you are near a river.

Maple sap attracts other insects too, which in turn attract birds wanting an easy meal. Woodpeckers also visit maple trees. The rising sap awakens insects, and their movements inside the tree attract woodpeckers, who can hear them.<sup>1</sup> I have also seen deer visiting maple trees and licking sap that has dripped down the side of the trunk.

Maple and her relatives – Red, Sugar, and Black – all have the potential to be good friends. There are even a couple of smaller friends – mountain and striped maple – that work well as understory plants in gardens (but not really for tapping). Just remember, a good "friend" is easy to find – if you know where to look. \*

<sup>1</sup> See the book, *Innatig's Gift of Sugar: Traditional Native Sugarmaking*, by Laura Waterman Wittstock. 1993. Lerner Publications Company. Minneapolis.

## FOREVER WILD

### Congratulations to Our Newest Lifetime Members

**Kathy Carter & Mack Ruffin**  
Ann Arbor (MI) Chapter

**Brook Soltvedt**  
Madison (WI) Chapter

**Sharon Bloomgarden**  
Milwaukee North (WI) Chapter

**Mariette & Dave Nowak**  
Milwaukee Southwest-Wehr (WI) Chapter

*Thank you for your support and your dedication to Wild Ones.*



### You Can Be a Lifetime Member

The Wild Ones National Board is pleased to be able to offer this special way to show your support of Wild Ones and its mission.

\$1,200 per household, payable over three years. Not inheritable.

Applies to household, which includes children under 18 years of age.

Local chapters will still receive their annual dues reimbursement for lifetime members. One address per membership.

**Contact the National Office, toll-free at 877-3944-9453 for details.**

# The Road More Traveled – By Invasive Plants

By Janet Allen. Photo by Allison Vaughn.

## INVASIVES ON THE HORIZON

Invasive species are spreading throughout the land, even to remote areas. The horticulture and agriculture industries have introduced many invasives, but sometimes they are unintended hitchhikers on shipments of plants or other imports. How do they spread so far beyond their initial locations? Of course, berry-eating birds can “plant” seeds contained in their droppings, and the plants themselves can send out runners, or disperse their seeds on wind or water beyond the border of our yards. But, while few people deliberately plant these invasives hither and yon, some common human activities do unintentionally spread them.

### Roads

One of these activities is road construction and maintenance. Tom Brock, site manager of Wisconsin’s Pleasant Valley Conservancy, recently reported, “At Pleasant Valley Conservancy we have an example of how road construction can lead to the introduction of invasive plants. Pleasant Valley Road was rebuilt about three years ago, and the contractor brought in gravel for the shoulder. This gravel was contaminated with seeds of spotted knapweed. Prior to this introduction, we had not had this invader anywhere along the length of this town road. Further, spotted knapweed had never been a problem at Pleasant Valley Conservancy itself.”

State environmental agencies acknowledge that there’s a high risk of introducing invasive species during road construction and maintenance. Many have detailed invasive-species-management guidelines for grading, roadside mowing and spraying, culvert installation, gate and sign installation, parking-lot maintenance, road reconstruction, and new construction. But note: these are guidelines, not legal requirements. Read an example of the guidelines yourself at The Center for Invasive Plant Management ([www.weedcenter.org/store/docs/CIPM\\_prevention.pdf](http://www.weedcenter.org/store/docs/CIPM_prevention.pdf)). I’ll leave it to you to speculate on how many of these detailed, extensive (and expensive to implement) guidelines are voluntarily followed.

Here in upstate New York – and all the way to Tennessee – we may be about to find out. Our land rests on Marcellus Shale, a “super giant” gas field. Along with the dangers to our aquifers and wells from the hydraulic fracturing gas-drilling process itself (commonly called “fracking”), we face a potential explosion of invasive plants, as the area is crisscrossed with new roads and with likely thousands of large, multi-acre drilling pads.

Pennsylvania, also sitting on Marcellus Shale, is facing similar forest road-building efforts. A Pennsylvania State University researcher, David Mortensen, has been studying the spread of invasive plants even into isolated forests. In his August, 2009, article, “Forest Roads Facilitate the Spread of Invasive Plants,” he notes that roads serve as corridors for movement, and that they provide prime habitat for establishing invasives. Interestingly, he found that some invasives, such as Japanese stiltgrass, actually don’t spread quickly on their own. It is road construction and maintenance that enable these plants to thrive. One reason is that the crushed limestone used in road grading is highly alkaline, inhibiting the acid-loving native forest plants, thereby leaving a void that non-native invasives rush to fill.

### Hiking

But road building and maintenance aren’t the only human activities that spread invasive plants. One common area where invasive plants are thriving is at trail heads and along trails – yes, our own nature-loving hikes. Invasive plant seeds and disease organisms can hitch a ride on our hiking boots, clothes, or other hiking equipment. Barry Rice, an invasive-species specialist with The Nature Conservancy, recommends thoroughly cleaning our shoes and boots by picking off seeds, and cleaning mud out of the treads. He also sprays his shoes with a 10-percent bleach solution. Check your clothes, too.

### Smart phones to the rescue

Forests are big places, and it’s hard for scientists, rangers, and other conservation folks to know where plant invasions are occurring. That’s where we come in. Some states, such as Michigan, have a low-tech way you can report invasive plants: filling out an Unwanted Plants Detection Card. You indicate where you saw the plants by marking a park-visitor map, or by taking the GPS coordinates.

A new program takes advantage of our smart phones. The “What’s Invasive” application can be downloaded onto any iPhone or Android mobile phone. When you spot an invasive plant while hiking or biking, you simply snap a photo, map the location, and upload it to the park web site. (No smart phone? You can submit the information by e-mail.) So far, it’s available only for the Monica Mountains National Recreation Area, but it’s planned for other national park locations, too. We citizen-scientists can help keep the weed maps up to date, and help park staff determine where to best focus their efforts.

The Center for Invasive Plant Management notes that, “The most effective, economical, and ecologically sound approach to managing invasive plants is to prevent their invasion in the first place.” Of course, we knew that – but as individuals and as a society, are we acting on this principle? \*



# Pat Armstrong



**SUBMITTED BY WILD ONES GREATER DUPAGE CHAPTER:** Patricia (Pat) Armstrong has been a major contributor to the restoration, protection, and understanding of the Midwest's natural heritage for over fifty years. Throughout her life she has served as an educator, environmentalist, ecologist, scholar, researcher, artist, photographer, field biologist, restoration expert, consultant, writer, entrepreneur, and innovator.

Upon completion of her education (B.A. in Biology and English at North Central College and M.S. in Biology and Ecology from the University of Chicago), Pat has dedicated much of her time to educating others. She has taught in public schools, colleges, universities, nature centers, arboreta, and lectured for gardening clubs, non-profit organizations, and seminars. As a participant in the Juneau Icefield Research Program she was Michigan State University's first female instructor.

Her published works include four books, many scientific papers, and numerous popular articles. Pat has trained hundreds of prairie-restoration and management professionals, and has led several expeditions to remote areas throughout the world to help others appreciate wilderness.

Pat's expertise and extensive knowledge of native plants, their habitats, ecological importance, and other valuable data, range from the tiniest of mosses and lichens, to the largest of trees. She is an expert in prairie and woodland ecosystems, with over forty years of experience in management and restoration. As a consultant for Illinois' DuPage County Forest Preserve she has spent many long hours surveying rare and endangered habitats, and her work has helped save many remnants from destruction. Despite all her responsibilities, Pat is always willing to take the time to answer questions, making her one of our area's most valuable assets. Her wealth of knowledge and her willingness to share this knowledge with all age levels has earned her great respect and admiration from all who know her. Although her botanical knowledge seems exhaustive, she continues to take notes at every meeting and lecture, always curious to learn more.

Pat started her own business, Prairie Sun Consultants, in 1985, and later co-founded the Wild Ones Greater DuPage (IL) Chapter

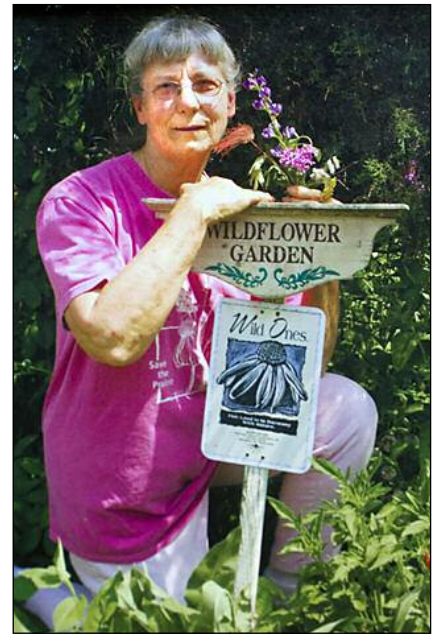
in 1992, the first chapter in Illinois. She is the backbone of this chapter, and her Wild Ones contributions include serving as our chapter president (for ten years), the chapter board, national board, and many other duties. Most importantly, she was the inspiration for many of us to become Wild Ones members. In addition to her Wild Ones contributions she is a lifetime member, valuable contributor, and past president of the Illinois Native Plant Society, and a distinguished member of the DuPage County Environmental Commission, which provides environmental guidelines for residents and businesses.

It seems that nature has been incorporated into every aspect of Pat's life. She is an award-winning nature photographer, and many of her photographs have been published. Her botanical line drawings and note cards are sold in art galleries, while her poetry, stories, and presentations, express a profound insight into, and respect for nature. She is also an accomplished mountain climber, and was probably the first woman to solo-climb Mexico's four highest mountains.

Living what she teaches, Pat, along with her husband Chuck, built a passive-solar, highly energy-efficient home, and planted their entire yard as a prairie in the middle of the Chicago suburbs in 1983. Pat will even take the time to relocate insect egg cases she finds in her prairie before burning. A few years ago, Pat and Chuck added solar panels, and broke new ground by planting a prairie on a steeply pitched roof in only 4 inches of soil. Pat also wrote the *Wild Plant Family Cookbook*, a book on cooking with wild edibles. Many of us have enjoyed her sumac tea.

Her deep love of the natural world has amazed, captivated, motivated, and inspired all those who know her. One Wild Ones member recalls, "I watched her as she would throw her arms unabashedly around a tree with sheer joy and admiration, and in the next moment she could shed a tear over a lost species of flower that she remembered from her childhood."

As for our local chapter, we have all benefited from knowing Pat, and she is our hero. The natural-landscape movement in both Illinois and the Midwest has gained much from her contributions, and she has



helped many to appreciate the beauty of native plants, the wonders of nature living outside our doors, and a landscape that truly belongs. \*



Prairie Moon<sup>®</sup>  
Nursery

More than 600  
species of seeds  
and plants  
indigenous to  
North America.

[www.prairiemoon.com](http://www.prairiemoon.com)  
(866) 417-8156

PRAIRIE • MEADOW • WETLAND •  
SAVANNA • WOODLAND

Free full-color catalog and native  
plant growing guide!



## Pussy Willow

### Beyond the bird feeder: Gardening for Birds and Other Wildlife

By Mariette Nowak

Native to much of Canada and the northern half of the United States, the beloved pussy willow (*Salix discolor*) heralds spring by bursting its bud scales, revealing catkins clothed in silk. Like the long hairs on pasque flowers and hepaticas, the pussy willow's silky fur helps to insulate its catkins from the chilly, changing weather of the early season. Throughout this willow's wide range, winter-weary folks bring its budding branches indoors to brighten their homes, and watch with delight, as the male catkins gradually develop their beautiful golden stamens.

#### Value for Birds

The pussy willow provides food for a variety of birds. Its buds and tender twigs are eaten by grouse, including blue, spruce, ruffed and sharp-tailed grouse. Ptarmigans and pine grosbeak prefer to feed only on its buds. Some waterfowl, such as mallards and wood ducks, eat its catkins.

American goldfinches frequently nest in pussy willows, and no doubt other species of birds find nest sites as well as shelter from inclement weather and predators within the branches of this multi-stemmed shrub. The ruby-throated hummingbird uses the fuzz on willow seeds for nesting material, and feasts on the swarms of insects attracted by the flowers.

By examining fecal samples of birds, researchers have been able to describe the willow-reliant insect diets of six species of spring-migrating warblers.

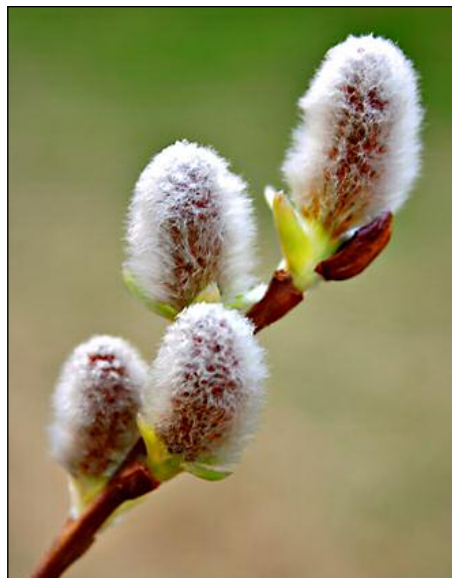
#### Other Wildlife Values

In addition to insects and birds, many other animals feast on pussy willows. Notable among them are beaver and varying hare, which eat the bark, buds, and wood.

Hoofed browsers like deer, elk, and especially moose, feed on the twigs and foliage. Many other animals rely on the pussy willow for some of their food. Muskrats, pika, cottontail rabbits, and fox, along with gray and red squirrels feed on its bark, buds, and wood. Its foliage and catkins are eaten by meadow mice and native wood rats.

#### Landscape Notes

The pussy willow is an excellent and hardy shrub for any site with moist to wet soils. Usually the first willow to flower in spring, its silky catkins are as attractive on the shrub, as in a vase. The pussy willow grows



Along with skunk cabbage, pussy willows are among the first to bloom each spring.

rapidly, and is very easy to root in water. It can also be propagated from stem cuttings which are simply placed in moist soil, where they will take root on their own. The stems should be taken when the plants are dormant in early spring, late fall, or winter, when the ground is not frozen. Stems should be about 2 or 3 feet long, with a diameter of about a half to one and one-half inches. Cut the lower ends at an angle, and the top ends flat, so they can be pounded into the soil. After cutting, immediately place the stems in water, and plant within a few days – preferably the same day. Pound a rod into the soil first to make a hole for the cutting – then put a small block of wood over the flat end before pounding the cutting into the soil, so the stem does not split.

#### Also of Interest

The willow (*Salix* genus) is the original source of one of the most prescribed medicines throughout history – the aspirin. Hippocrates (460-377 BC) was the first to record that chewing willow leaves reduced pain, but it is believed to have been used in folk medicine centuries earlier. Perhaps long before the Greeks, the American Indians also used willow to relieve fevers and pain. In the 1800s, scientists isolated the key pain-killing ingredient – salicin – from the willow, and in 1899, the Bayer Company, in Germany, was the first to market aspirin tablets. \*

## Make a Date

What is it?

**The Wild Ones 4th Quarter Annual Meeting and the 2010 Annual Membership Meeting and Conference**

When is it?

**November 5th & 6th**

Where is it?

**Connecticut College,  
New London, Connecticut**

Who's the host?

**Mountain Laurel Chapter (CT)  
of Wild Ones**

What will we do?

**Have fun. Meet friends, new and old. Learn about native plants and natural landscaping.**

What else?

**Exhibitors, book sales,  
and more.**

Anything else?

**Our annual photo contest.  
Start working on your photos.**

More details coming soon.

go native!  
door landscape  
& nursery

**native plants  
sustainable landscapes  
intelligent design**

consulting, design, installation,  
landscape care, stewardship planning  
& invasive species control.

incorporating clients personal &  
aesthetic values & functional needs.

greatly reducing long term costs of  
property ownership

**nursery open 10 – 4 daily  
may thru october**

offering over 185 native species of local  
& regional genotype, plus educational  
demonstration gardens. visit our website  
often for upcoming events & promotions.

920-746-9770

6329 hwy 42 egg harbor

door county wi

[www.doorlandscape.com](http://www.doorlandscape.com)

## JOIN WILD ONES. RENEW. UPGRADE. GET A FREE DVD AND/OR FREE BOOK.

To kick off the **Grow Wild Ones Campaign for 2010**, we have updated, revamped, and reproduced the popular **Wild About Wildflowers** video in DVD format. And now, this amazing video is available **free** when you join Wild Ones, or renew your membership at an upgraded level.

Because many of our long-time members have already received this helpful video, we are offering the DVD version free to new members, as an enticement to join Wild Ones. We want to – no, we *need* to – get Wild Ones membership over the 3,000-member hump.

**This great video for all Wild Ones members, new or old**, lets you get dirt on your hands without getting dirty. This video will help anyone to:

*Identify* native wildflowers and grasses. *Design* and prepare the planting site.

*Grow* and nurture wildflowers and grasses. *Plan* for long-term maintenance.

*Enhance* their landscaping to make it a habitat. *Enjoy* year-round beauty in their back yard, neighborhood, and schools or businesses.

### Renewing members get a free book

Renewing members will receive a free copy of our 25th anniversary commemorative 4-color book of wonderful photos and stories from Wild Ones' first 25 years, *25 Years of Wild Ones: Native Plants, Natural Landscapes*.

### Upgrading members get both

Renew at the Wilder level, and get the Wild About Wildflowers DVD free.

Renew at the Wildest level, and get the DVD and the 25-year book free.

### Don't wait, do it now

Use the application on page 19, or join online at [www.for-wild.org/joining.html](http://www.for-wild.org/joining.html).

### Make a difference – join Wild Ones



## WILD Center Wish List

Volunteers to help with all sorts of things: Indexing the *Wild Ones Journal*  
Cataloging and arranging library materials • Planting demonstration gardens  
Recording bird and critter sightings • Pulling buckthorn  
Restoring woodland understory and overstory.

Stuff: First-aid kit • Rain gauge • Gardening tools (trowels, shovels, pruners, pruning saws, etc.) • Garden tractor or 4-wheeler and small trailer • Stepladder  
Trailer for hauling debris with car • Rain barrels • Posts for bluebird houses  
Conference-type tables • Conference-type stackable chairs • One set of bunk beds  
Two dressers • Trees, 6-8-ft. tall, such as maple and oak (bur, white, and swamp white oak) • Woodland plants, such as grasses, ephemerals, ferns, etc.

Contact the National Office if you have other items that may be suitable for use at the WILD Center. We now have someone in the office from 10 a.m. to 3 p.m. Monday-Friday.  
Or just call for an appointment: 877-394-9453.

## Chapter Notes

*This letter is paraphrased from a letter sent by President Jan Offutt to her Columbus (OH) Chapter members.*

This is the time of year that chapters are electing new boards and planning their monthly educational activities. Please think about your role in Wild Ones. Did you join Wild Ones to learn about natives to use in your yard? If so, your vision has likely moved beyond this to wondering about how or even developing information systems that would encourage businesses and neighborhoods to convert grassy areas to native plants. Did you ever think that maybe you would learn and retain so much more about native plants if you became actively involved in your chapter?

Most chapter boards need officers and committee chairpersons. They can't continue to rely upon the same officers and chairpersons year after year – burnout sets in, boredom results, and members lose interest. Besides that, many hands lighten the load.

If you choose to become involved, you will have support from both the chapter and national Wild Ones. Chapter board members have information and resources for their board positions and national has the Chapter Guidebook.

Being an officer or a committee chair, and getting in on organizing the coming year's events will help to increase your knowledge of native plants more than just being a member attending meetings. Truly, experience is the best teacher. We encourage you to ponder how you could contribute more to your chapter and help Wild Ones expand our presence and the accomplishment of our mission (to increase the use of native plants through education and projects) in our communities.

Thanks for all that you do to support Wild Ones. \*

## Be sure to tell them you saw it here.

The business people who advertise here are friends to native plants. Next time you stop in to visit or to patronize one of our advertisers be sure to mention that you saw their ad in the *Wild Ones Journal*.

# Wild Ones Business & Affiliate Members Yellow Pages 2010



The Wild Ones Yellow Pages listings give you a chance to get to know our Wild Ones business and affiliate members. We want them to know we appreciate their support. When looking for products and services you need, remember that our Wild Ones business and affiliate members, along with our *Journal* advertisers, share the goals and ideals of Wild Ones everywhere.

## BUSINESS MEMBERS

### ILLINOIS

#### Art & Linda's Wildflowers

3730 S 59th Ave, Cicero IL 60804  
(708) 785-2943

art@artandlindaswildflowers.com

www.artandlindaswildflowers.com

North Park Village Nature Center Chapter

In creating our gardens, we take our cues from the beautiful things and places we have seen in "the natural world." The location – the earth – tells us what goes where. The conditions, such as the amount of sun or shade, the type of soil, the amount of moisture an area will get and retain all dictate what types of plants will be happy, will thrive and will coexist there. The native plants we use will all belong together there, as they have since ancient times to create a sense of harmony.



#### EarthWild Gardens

1479 Potawatomi Rd, Grayslake IL 60030  
(847) 287-7477

info@earthwildgardens.com

www.earthwildgardens.com

Lake-To-Prairie Chapter

EarthWild Gardens grew out of a love for gardening and a commitment to preserving local biodiversity. We sell over 150 species of hard-to-find native flowers, grasses, vines, shrubs, and trees. We provide consultation and design services to help our clients incorporate prairie, wetland, and woodland habitats into residential and commercial settings. We are located in north suburban Grayslake, Illinois. In May and June, we're open for our plant sale at Station Square of Prairie Crossing.



#### Kickapoo Mud Creek Nature Conservancy

1919 Limekiln Rd, Oregon IL 61061

(815) 973-0756

kentkathy@sbcglobal.net

www.kickapoomudcreek.org

Rock River Valley Chapter



#### Pizzo & Associates Ltd

10729 Pine Rd, Leland IL 60531

(815) 495-230 (815) 498-4406 fax

jack@pizzo.info

www.pizzo.info

Rock River Valley Chapter

Pizzo & Associates Ltd is dedicated to the use of ecologically sound principals in planning and devel-



opment for both public and private sectors. They bring together the disciplines of planning, consulting, contracting, stewardship, and nursery in one company for their public and private land owners who are committed to the restoration of natural processes on their land to create stable, cost effective and beautiful solutions to today's problems. The Native Plant Nursery, located in Leland, Illinois, grows 250-plus plant species native to the Chicagoland region. Most plants are grown in trays of 38 with deep, fibrous root systems that are perfect for restoration, landscaping, and naturalization. Give us a call today or check out our web site for online plant availability.

#### Red Buffalo Nursery

10502 Seaman Rd, Hebron IL 60034

(815) 648-4838

kaskel@mc.net

www.redbuffalonursery.com

Rock River Valley Chapter

Red Buffalo Nursery specializes in plants native to the prairies, wetlands, savannas, and forests of northeastern Illinois and southeastern Wisconsin. We grow plants from locally collected seed whenever possible. Plant sales occur at our nursery in the spring and fall, at farmer's markets, and by appointment. Visit our web site for a plant list, sales dates, and locations. When you are here, be sure to visit our prairie and sedge meadow restoration. We are proud of our natural area, and have protected it with a permanent conservation easement. Our services include design, landscaping, and natural-areas restoration and management. When we design a garden or create a management plan, we use the original pre-settlement environment as our model. Call us to set up a site visit.



#### Tallgrass Restoration LLC

2221 Hammond Dr, Schaumburg IL 60173

(877) 699-8300 (847) 925-9830

noelle.hoeffner@tallgrassrestoration.com

www.tallgrassrestoration.com

North Park Village Nature Center Chapter

Our experienced staff of restoration professionals is dedicated to restoring the native health, integrity, and beauty of our clients' land and water resources. We create ecologically sustainable public and private wetlands, woodlands, and prairies by using design, planting, shoreline restoration, licensed herbicide applications, prescribed burns, and other restoration techniques. We guarantee all of our work. Branches in Illinois and Wisconsin.



#### The Natural Garden Inc

38W443 Hwy 64, St Charles IL 60175

(630) 584-015

swysock@thenaturalgardeninc.com

www.thenaturalgardeninc.com

Greater DuPage Chapter

The Natural Garden is the

grower of over 1,000 varieties

of herbaceous plants.

Our selection of northern Illinois natives is unmatched, and is complimented by a discerning collection of ornamental perennials, grasses and herbs. Come visit our unique 25-acre nursery, complete with garden center and beautiful display beds.



### INDIANA

#### JFNew & Associates, Inc

708 Roosevelt Rd, Walkerton IN 46574

(574) 586-3400 (574) 586-2412

lcooper@jfnew.com

www.jfnew.com

Gibson Woods Chapter



JFNew is an ecological consulting, restoration, and cultural-resources firm and native-plant nursery, with headquarters in Walkerton, Indiana, and eight offices in the Great Lakes area. For more than 20 years JFNew has provided clients with natural resource design, planning, and restoration services. Visit our web site or call 574-586-3400 for more information.

### MICHIGAN

#### Great Lakes Native Plants

10371 Rainey Rd, Litchfield MI 49252

(517) 542-4547

drewlathin@raker.com

Red Cedar Chapter

Specializing in native plants in the Great Lakes eco-region.



#### Native Connections

17080 Hoshel Rd, Three Rivers MI 49093

(269) 580-4765 (269) 273-1367 fax

jerry@nativeconnections.net

www.nativeconnections.net

Kalamazoo Area Chapter

Native Connections offers consultation services on restoration of native ecosystems, specializing in native landscape design and installation of prairie, wetland, and woodland ecosystems. We can help provide seed mixes of local and regional genotype. We can also provide native seedlings, small or large scale quantities. Wild Ones goals are very much in line with our own personal and business goals. Large scale producers of Michigan genotype native grasses. "Working to restore our natural world."



## Grow Your Business or Organization Along With Wild Ones

With Business or Affiliate membership at the Wild level you receive: Annual listing in the *Wild Ones Journal* Yellow Pages • Extra copies of the *Wild Ones Journal*, for employees or clients • Resource listing on the Wild Ones web site • Open invitation to you and your employees at Wild Ones chapter activities.

## Wild Ones Business and Affiliate Members Yellow Pages 2010

### Wildtype Native Plant Nursery

900 N Every Rd, Mason MI 48854  
(517) 244-1140 (517) 244-1142  
wildtype@msu.edu  
www.wildtypeplants.com  
Red Cedar Chapter



Wildtype exclusively grows plants native to Michigan, from Michigan genotypes. We grow trees, shrubs, grasses, and wildflowers typical of southern Michigan woodlands, wetlands, and prairies. It is our objective to propagate nursery stock with enough genetic diversity to create self-sustaining populations. Therefore, the vast majority of our plants are grown from wild seed stock. This is what we mean when we say our plants are born to be wild. Wildtype also provides ecological design and consulting services for public, commercial, and residential projects focusing on restoration and preservation of native landscape. Services offered include: species inventory and site assessment, design and planning, and the establishment and management of native landscape. Please contact us for more information.

### MINNESOTA

#### Barr Engineering

4700 W 77th St Suite 200,  
Minneapolis MN 55435  
(800) 632-2277  
candrews@barr.com



www.barr.com  
Arrowhead Chapter

Barr Engineering's nearly 400 engineers, scientists, and technical support staff located in Duluth, Hibbing, and Minneapolis, Minnesota; Ann Arbor, Michigan; and Jefferson City, Missouri provide engineering, environmental, and information-technology services to clients in numerous industries and all levels of government. One of Barr's specialties combines the talents of our landscape architects, who specialize in use of native plants, with the skills of our water-resources engineers to design landscapes that manage storm water in an ecologically sound yet aesthetically pleasing manner. The landscape architects and ecologists at Barr know how to maintain ecological integrity while providing the amenities that we've come to expect. In addition to many other services, we also assist clients with storm water planning and permitting. Offices in Ann Arbor, Michigan; Jefferson City, Missouri; and Hibbing, Minnesota.

#### EnergyScapes Inc

Minneapolis MN 55409  
(612) 821-9797 (612) 871-9393  
douglas@energyscapes.com  
www.energyscapes.com



Twin Cities Chapter

Based in the heart of south Minneapolis, EnergyScapes has been designing, installing, and maintaining beautiful sustainable landscapes using locally native plant species since 1989. Our goal is to create places of sanctuary and oasis for people that also benefit our environment. Working with the site we capitalize on the natural energy available from the earth, sun, and water to create landscapes that emulate natural habitats, save resources, and solve drainage issues, all while meeting our clients' desire for beauty. EnergyScapes creates serene energy-saving designs featuring elements such as Green Awnings® and rain gardens. Sharing the mission of expanding awareness, saving biodiversity, and healing the planet, we are glad to be working with Wild Ones. Giving its first presentation, Douglas helped kick off the Twin Cities Chapter.

### Out Back Nursery

15280-110th St S, Hastings MN 55033  
(800) 651-3626 (651) 438-2771  
tom@outbacknursery.com  
www.outbacknursery.com



Twin Cities Chapter

Out Back Nursery, a grower of Minnesota native plants for 25 years, also provides landscape design and contractor services. Known for their mottoes, "Where ecology and horticulture unite," and "May we be your guides?" their goal is to serve the residents of the region with the largest selection of native plants in the region.

### Prairie Moon Nursery

32115 Prairie Ln, Winona MN 55987  
(866) 417-8156 (507) 452-1362  
info@prairiemoon.com



www.prairiemoon.com

Partner-at-Large

Prairie Moon offers a huge selection of native wildflower and grass seed and plants through a secure online store or free annual catalog. Our seed and plants are of the highest quality. With over 600 species listed, we are your source for the classic species as well as the more uncommon forbs (wildflowers), cacti, trees, shrubs, vines, ferns, grasses, sedges, and rushes. We specialize in customizing seed mixes for prairie/meadow, wetland, savanna, and woodland, with free design/consultation services. Other products offered include natural herbicide, cover crops, inoculum, and books. Prairie Moon can also guide you to the best ecological lawn alternatives such as Buffalo Grass and our no-mow "Eco Grass." Request your free catalog and native-plant growing guide, call us with questions, or visit us at one of our free summer prairie tours.

### Prairie Restorations Inc

31922 128th Street, Princeton MN 55371  
(763) 389-4342  
info@prairieresto.com  
www.prairieresto.com



St. Croix Oak Savanna Chapter

For nearly 33 years, Prairie Restorations, Inc. has designed, restored, and managed prairies and other natural landscapes. Contracted installations are at the heart of our business. We complete successful projects by making use of high-quality native seeds and plants that we produce in our own fields and greenhouses, and by relying on time-tested techniques and state-of-the-art equipment. Want to do the work yourself? Our retail store provides seed and plant materials, and our knowledgeable staff can answer questions and make recommendations to ensure the success of your project. Branches in Cloquet, Hawley, Northfield, Princeton, Scandia, and Watertown.

### Stonepocket, Inc

661 Conestoga Trail, Chanhassen MN 55317  
(952) 974-1407  
info@stonepocket.com  
www.stonepocket.com



Twin Cities Chapter

Stonepocket is a full-service landscape company that offers professionally crafted designs and gardens that enhance the landscape while still being good stewards of the environment. We believe that landscapes should be interactive places that educate, entertain, and provide places to escape.

**When patronizing a business or organization you think is compatible with the mission of Wild Ones, ask them to consider joining Wild Ones.**

### MISSOURI

#### Forrest Keeling Nursery

88 Forrest Keeling La,  
Elsberry MO 63343  
(800) 356-2401  
info@fknursery.com  
www.fknursery.com



Partner-at-Large

Forrest Keeling Nursery is the world-renowned originator of the RPM (root production method®) technology. Our patented RPM growing process yields unsurpassed survivability and plant growth, which makes Forrest Keeling plants the benchmark for wetland restorations and large-scale installations in any application. Forrest Keeling Nursery offers an extensive list of Midwest natives, specializing in woody trees and shrubs. Visit our web site for more information. From nature – to us – to you – faster.

#### Missouri Wildflowers Nursery

9814 Pleasant Hill Rd, Jefferson City MO 65109  
(573) 496-3492  
(573) 338-9453 cell  
mowldfirs@socket.net  
www.mowildflowers.net



Mid-Missouri Chapter

We sell native Missouri perennials, both seeds and plants. Our plants are nursery-propagated. Missouri is the genetic origin of the plants, so they are best adapted to states east of the Rockies. Plant materials include trees, shrubs, vines, grasses, sedges, and perennial wildflowers for sun and shade. View our plants online or visit the nursery near Jefferson City. Our web site species lists are the most up-to-date of what is available at any time, including new and out-of-stock items. Just click on "Plants & Pricing" on our web page.

#### Songbird Station

PO Box 157, Mexico MO 65365  
(800) 256-2473  
mel@songbirdstation.com  
www.songbirdstation.com



Mid-Missouri Chapter

Mid-Missouri Songbird Station is Central Missouri's original, largest and best wild bird and nature store. In addition to offering over 7,000 different wild bird and backyard nature feeders, baths, houses, books, gifts, and more, we are now in our new location offering a selection of the best Missouri natives for attracting hummingbirds, songbirds and butterflies. We offer suggested planting plans for central Missouri, as well as pre-planted baskets containing a combination of annuals and perennials that can be enjoyed for a season and then planted in the fall.



## Wild Ones Business and Affiliate Members Yellow Pages 2010

### OHIO

#### Ground Work

8716 Arcturus Drive, Cincinnati OH 25249  
(513) 530-0949  
groundwork@fuse.net  
Greater Cincinnati Chapter  
Comprehensive landscape architecture services; registered in Ohio, Indiana, and Kentucky. Design and consultation studio that advocates the integration of: native plants, reused or recycled materials, the sensible use of the natural topography, and cultural context of the setting. While promoting functional, aesthetic, self-sustaining natural environments, GW designs enjoyable outdoor rooms that help bring adults and children closer to nature. Relevant nature-based projects include: natural play settings, themed and healing gardens, native planting and grading design for new settings or difficult renovated sites, LEED-certified projects, rain and drought-tolerant gardens, residential, and non-residential site planning and landscape architecture work.

#### Ohio Prairie Nursery

PO Box 174, Hiram OH 44234  
(330) 569-3380  
bobkehres@ohioprairienursery.com  
www.ohioprairienursery.com  
Western Reserve Chapter  
Ohio Prairie Nursery is a grower and supplier of native seed and plants, and a provider of related services. We strive to supply individuals and organizations with the products and services necessary to be successful with the reintroduction of native species into the landscape. We believe that the best way to renew the ecosystems, on which we all depend, is through educating and raising the awareness of individuals who can make immediate decisions that positively impact our planet. Our products include standard and custom native seed blends for a wide range of applications, as well as individual species of seed. Our plant offering includes rain gardens and hummingbird/butterfly gardens, and custom plant packages, as well as individual plant species. Our services include: custom seed mix design and blending, custom seed cleaning, contract growing, commercial native seed specification review, and educational presentations. Our installation group and affiliates work on seeding projects of all scales from back yards to hundreds of acres, and are available to subcontract rain garden installation in the Great Lakes region. We also do retail sales via our web store. Please call for information on wholesale and group sales.



### PENNSYLVANIA

#### Edge of the Woods Native Plant Nursery LLC

2415 Route 100, Orefield PA 18069  
(610) 395-2570 (610) 285-2496  
stantsits@edgeofthewoodsnursery.com  
www.edgeofthewoodsnursery.com  
Partner-at-Large  
Our goal at Edge of the Woods Native Plant Nursery is to offer a wide selection of high quality, nursery-propagated native plants to homeowners and other land managers. Native plants play an important role in our ecosystem, and we want to help you discover their beauty as well as their other benefits. Some of those benefits include attracting birds, butterflies, and wildlife, slowing water run-off and reducing pesticide and fertilizer usage.



### TEXAS

#### Ecovirons

PO Box 520, Chireno TX 75937  
(936) 362-2215  
cyrilla@myinu.net  
www.ecovirons.com  
Partner-at-Large  
Ecovirons specializes in propagation, consultation, landscaping, ecological evaluation, and wetland mitigation promoting ecologically and environmentally sound gardening. Ecovirons specializes in hard-to-find native plants for pick-up or delivery for large orders.

### WISCONSIN

#### Agrecol Corp

2918 Agriculture Dr, Madison WI 53718  
(608) 226-2544 (800) 291-1221  
mary.delarosa@agrecol.com  
www.agrecol.com  
Madison Chapter  
Agrecol Corporation combines the best principles of production agriculture with the science of ecology, producing high-quality native seed and plants. Agrecol is the largest grower of native plants and seed in the Midwest; growing more than 200 species of native wildflowers and grasses and new prairie sod. New products include specialty erosion control, water-management products available to national and international markets. Agrecol offers seed and live plants, and installation for prairie, woodlands, wetlands, and savanna plant communities, sales and installation of Envirolok vegetated retaining walls, environmental consulting and resource-management services, restoration design, detention, retention and rainwater basins, storm-water management, polyacrylamide, native-certified weed-free mulch/straw, silt fence equipment, installation, and site monitoring and maintenance.



#### Crystal River Inn B&B, LLC

E1369 Rural Rd, Waupaca WI 54981  
(800) 236-5789 (715) 258-5333  
crystalriverinn@charterinternet.com  
www.crystalriver-inn.com  
Central Wisconsin Chapter  
Our 1853 farmstead on the Crystal River in the historic village of Rural, exudes country charm on "Rustic Road 23," four miles south of Waupaca, in Central Wisconsin. As Wild Ones members, we are committed to making as gentle impact on the Earth as possible, and to restoring native-plant communities and wildlife habitat on our 11 acres. We are "Travel Green Wisconsin" certified and have just begun our work of prairie restoration and invasives removal on this former farm. The Inn features seven guest rooms with antique furnishings, a view of the river or woods, a nook for reading or visiting, and two cabins for families. Guest rooms have private baths and fireplaces. Two rooms also have a double whirlpool. All include a full breakfast with a Southern touch, featuring our home-made local wild grape and wild plum jelly. Our non-smoking environment has free high-speed wireless Internet, meeting space for small groups, and we're open year 'round. Our land has paths through fields and woods, an outdoor seven-circuit classical labyrinth,



and seven monitored bluebird houses. The wide variety of habitat on our land and the area from tamarack swamps to hardwood uplands invites local wildlife like river otter, bald eagle, and Karner blue butterfly. The area offers many restaurants and recreation opportunities: biking, birding, boating, canoeing, walking, fishing, nearby state parks, and charming small towns. A rural Wisconsin treasure.

#### De Pere Greenhouse & Floral, LLC

1190 Grant St, De Pere WI 54115  
(920) 336-8992  
niedzwiw@uwgb.edu  
www.deperefloralwi.com  
Green Bay Chapter  
Established 112 years ago, the De Pere Greenhouse and Floral, LLC is the oldest greenhouse in Brown County. The business long has been known for its quality plants and floral arrangements, as well as its dedication to meeting the needs of local community citizens, groups, schools, and churches. Restoring our natural landscapes is important, and we are dedicated to helping people do just that. We offer native plants for a variety of native landscapes, including bird gardens, hummingbird gardens, rain gardens, butterfly gardens, prairie flower gardens, gardens for shady areas, gardens consisting of plants known to heal, gardens with plants not friendly to deer, low-growing gardens for spatially tight places, and moon gardens that "glow" at night. We grow native plants that will add beauty to your land, that will attract butterflies and birds, and that will add diversity to your land. We also specialize in growing many varieties of heirloom vegetables (seeds from Seed Savers Exchange) including many varieties of tomatoes, peppers, and herbs. This year, we are expanding our heirloom plants to include heirloom flowers.



#### Door Landscape

6329 State Highway 42, Egg Harbor WI 54209  
(920) 495-3138 (920) 746-9770 fax  
Cliff@doorlandscape.com  
www.doorlandscape.com  
Door County Chapter  
Door Landscape is a full-service native landscape company located in the heart of one of most diverse eco-regions in the world. Our core values include the education of our employees and our clients on the value of sustainable design and maintenance. Door Landscape focuses on the creation of sustainable, well-planned gardens that reflect the plant communities in our region and our peninsula. Our nursery division currently propagates over 70 native Door County species for use in our client's gardens. From pre-construction plant surveys and site analysis through the design, installation, and continued care processes, we strive to exceed our client's expectations.



**Wild Ones recommends that you patronize businesses that support our policies regarding species provenance and habitat preservation. The appearance of advertisers in this listing does not constitute an endorsement by Wild Ones of any organization or product.**

## Wild Ones Business and Affiliate Members Yellow Pages 2010



### Fields Neighborhood

PO Box 555, East Troy WI 53120  
(262) 642-2651

skylark@manshire.com

www.fieldsneighborhood.org

Milwaukee-Southwest/Wehr Chapter

Welcome to Fields Neighborhood, an innovative holistic community nestled in the rolling hills of southern Wisconsin that combines sustainable living with a strong community atmosphere and respect for the natural environment. Fields Neighborhood offers a range of clustered homes that integrate the latest green building technologies with designs that minimize the impact on the natural surroundings. Discover homes built with concern for your comfort and for the environment. Fields Neighborhood offers certified Green Built Homes with quality craftsmanship and state-of-the-art environmental elements such as sun-tempered design, low-toxin and recycled building materials, low-voc paints, real linoleum floors, and solid wood kitchen and bath cabinets. Enjoy the many recreation and community activities. Watch the sun rise over the nearby hills, canoe in the neighboring Honey Creek, swim in the nearby lake, listen to music on the town square, or enjoy the annual 4th of July parade, hike on the many natural trails, ski at Alpine Valley, take part in gardening classes at Michael Fields Agricultural Institute, enjoy freshly baked organic bread and foods from Fields Best and the local organic-farming community, and much more. Grow your spirit in Fields Neighborhood. Meet new friends at potlucks or seasonal festivals at next door's Michael Fields. The Climbing Tree Waldorf-inspired Community and Daycare center in East Troy, or Prairie Crossing Waldorf School just 30 minutes from the Fields Community offer quality heart-centered education. Learn more about Fields Neighborhood by taking our online tour at [www.fieldsneighborhood.org](http://www.fieldsneighborhood.org). Come live the life you've imagined at Fields Neighborhood.



### Formecology LLC

210 Cemetery Rd, Evansville WI 53536

(608) 882-6656

info@formecology.com

www.formecology.com

Madison Chapter



Formecology, LLC is a full-service landscape design, installation, and care firm focusing on regionally inspired and sustainable outdoor living environments for residential and commercial settings. "Formecology" is born from the idea of combining art with nature; bringing natural elements together with cultural art forms to create landscapes that are appropriate both to site architecture and nature.

Our training and experience in landscape-design principles enables us to artistically combine native plants and local materials in an inherently eco-friendly way for a wide variety of settings. Sustainable outdoor living environments created by Formecology, LLC provide a vision and master plan for achieving a fulfilling and rewarding outdoor lifestyle, while being mindful of the environment.

### Good Oak Ecological Services

205 Walter St, Madison WI 53714

(608) 209-0607

frank@goodoakllc.com

www.goodoakllc.com

Madison Chapter



At Good Oak Ecological Services our mission is to improve the environment for the benefit of people and the natural community. We are experts in native plants and the ecology of natural areas, and we use this knowledge to create beautiful native landscapes, and restore natural areas to a more pristine condition. Our primary background is in natural-areas restoration, a discipline in which we work to rehabilitate damaged ecosystems so that these wonderful places and the wildlife that live in them can thrive and be enjoyed far into the future. But these remaining natural areas alone are too small and too fragmented to provide enough habitat for our wild plants and animals. Our cities and towns are sterile, with heavily manicured shrubs, high-maintenance annuals and perennials and chemically dependent lawns. By working with us to integrate native plants into our human landscape we can enliven your

home, business, and community, while giving our wild plants, butterflies, birds, and other wildlife a place to live.

### Half Price Books

8514 W Brown Deer Rd, Milwaukee WI 53224

(414) 354-1235

Milwaukee-North Chapter

### Half Price Books

5032 S 74th St, Greenfield WI 53220

(414) 280-0000

Milwaukee-Southwest/Wehr Chapter

### Hickory Road Gardens

2041 Hickory Rd, Mosinee WI 54455

(715) 693-6446 (715) 573-4552

brayherb@mtc.net

Central Wisconsin Chapter



Shade-loving woodland wildflowers are our specialty. We have over 25 years experience growing them under artificial shade. Starting with ginseng in the early '70s, we branched out into goldenseal, and ultimately into woodland wildflowers native to the forests of the upper Midwest. Our flowers are grown almost entirely from our own stock or from seeds gathered in the woods around our farm. We have been able to amass a nice collection of plants without dislodging the parent sources from their native habitat. We think you will find these nursery-grown plants to be vigorous and well-suited as potted plants for nursery sales, for private landscaping, or for commercial restoration projects. We ship bare-root, for overnight or next-day delivery, primarily in spring or fall, but at other times by request.

### Johnson's Nursery Inc

W180 N6275 Marcy Rd,

Menomonee Falls WI 53051

(262) 252-4988 (262) 252-4495 fax

patw@johnsonsnursery.com

www.johnsonsnursery.com

Menomonee River Area Chapter



Johnson's Nursery, Inc. is one of the largest growers of landscape plants in southeast Wisconsin. Our locally grown inventory includes an extensive list of native trees, shrubs, and evergreens, along with herbaceous forbs, ferns, and grasses. We strive to provide our customers with the widest possible selection of balled and burlapped and container grown plant material in the area. Johnson's also offers residential and commercial landscape design, installation and maintenance services, including buckthorn and honeysuckle eradication. Our landscape architects and designers offer site-specific,



## Wild Ones Business and Affiliate Members Yellow Pages 2010



creative ideas for your landscape. We also offer brick and stone patios, retaining walls, and other hardscape elements.

### Lacewing Gardening & Consulting Services

6087 N Denmark St, Milwaukee WI 53225  
(414) 793-3652 cell (414) 358-2562

lacewing@nase.org

Menomonee River Area Chapter

Lacewing Gardening Services provides gardening consultation, instruction, design and restoration services, as well as maintenance. We work at creating habitats that enhance local/regional ecosystems, including woodland and shade gardens, prairies, meadows, raingardens, lakeside and stream restorations. We also do organic pest- and disease-control when needed. We are a conservation-minded business, and believe in natural landscaping using native plant species (also non-invasive non-natives), and in a lifestyle that supports sustainable living.



### Lake Shore Cleaners Inc

4623 N Richmond St, Appleton WI 54913  
(920) 734-0757 (920) 716-1373 cell  
lakeshorecleaners@newbc.rr.com

www.lakeshorecleanersinc.com

Fox Valley Area Chapter

At Lake Shore Cleaners we have



the solutions for the natural landscaper. A full-service company, we do design and installation of natural landscaping, using native plants – prairie, shade and wetland environments, and raingardens. We construct retaining walls using natural and block (green and plantable), and patios using flagstone and flat rock and permeable, porous and water-retaining pavers. We can also help you with your management plan by providing maintenance through prairie burns, weed- and invasive-species control, restoration, and bio-retention.

### Landmark Landscapes Inc

W3923 County Rd O, Sheboygan Falls WI 53085  
(920) 467-6442

joe@landmarklandscapesinc.com

www.landmarklandscapesinc.com

Sheboygan Area Tension Zone Chapter

Landmark Landscape is an ecological landscape firm that promotes sustainable landscape applications and native-plant communities. We host an expert staff of designers, horticulturists, arborists, and artisans who specialize in native-landscape design, ecologically sensitive installation, and low-impact maintenance practices. Our innovative approach toward



landscaping ensures that each project meets our client's needs and benefits the environment. We have enthusiastically accepted a position of land stewardship, and will continue to help protect and restore the delicate ecosystems and biodiversity of the upper Midwest. Call us for a consultation.

### Landscape Restoration

8221 W Front St, Hanover WI 53542  
(608) 302-5744 daleink@jvl.net.com

Partner-at-Large

Landscape Restoration is a small, experienced, value-based, natural-area planting and management company. We're professionally certified (S-390 burn boss, WI herbicide applicator) and fully insured. And we're doing what we believe in: promoting native plants and battling invasive species to help you manage your property for natural diversity with common-sense economics. Our work includes building native-stone walls, establishing native plantings in flood-prone residential sites, burning prairie patches and 80-acre CRP fields, rescuing native plants, planting roadsides and steep berms, controlling garlic mustard and buckthorn in woodlands, and attacking Canada thistle, crown vetch, multiflora rose, and gypsy moth infestations. Every year we donate a rain garden through the Wisconsin Rivers fall online auction (it's a tax-deductible landscape addition for a good cause), and in 2009 we are offering discounts for Wild Ones members in southern Wisconsin. If you would like a little help bringing nature back into balance on your property, give us a call for a free evaluation and proposal.



### Marshland Transplant Aquatic Nursery

PO Box 1, Berlin WI 54923  
(800) 208-2842 (920) 361-4200 fax  
marshland@centurytel.net

Fox Valley Area Chapter

The largest wholesale aquatic nursery in the Midwest, Marshland Transplant Aquatic Nursery produces quality native-plant materials for large-scale wetland mitigation and native restorations. We also provide installation services for a variety of projects, including habitat restoration, wastewater treatment, erosion control, bioengineering, and mine reclamation. Specialty services include mowing/maintenance, prescribed burning, no till drilling and delineation, mitigation, and monitoring. Join us in rebuilding our environment. We sell only to wholesale firms, contractors, ecologists, professional organizations, and nurseries.



### NES Ecological Services

4664 Golden Pond Park Ct, Hobart WI 54155  
(920) 499-5789

jhavel@releeinc.com

www.releeinc.com/NES

Green Bay Chapter

NES Ecological Services is a committed group of scientists whose diverse backgrounds include restoration ecology, wildlife management, and wetland ecology. Located in Green Bay, Wisconsin, NES is fully equipped to serve clients throughout Wisconsin and the Midwest. Since 1996, we have provided native-habitat-restoration services to municipalities, lake-management districts and associations, the



## Wild Ones Business and Affiliate Members Yellow Pages 2010

Wisconsin Department of Natural Resources, the U.S. Fish and Wildlife Service, and individual landowners. These services include planning and design, material installation, monitoring, and maintenance. NES ecologists use their knowledge and experience with Wisconsin's native-community types to design and implement aesthetically pleasing, natural landscapes utilizing only plant species native to the site's region. The use of locally native species is a very important factor that is often overlooked, but is important in not only assuring a project's success, but also in meeting all the objectives of a restoration. Each restoration project is catered to the individual or group based upon their need, experience, and willingness to be involved with the "hands-on" portion of the project. Visit our web site to review a few of our most recent projects, along with a complete list of all the services we offer.

### Northern Sunset Perennials

(262) 253-1412

www.northernsunset.com

Menomonee River Area Chapter

The Northern Sunset brand consists of over 1,300 varieties of perennials, including over 140 Wisconsin and Midwest native species of perennial forbs, ferns, and grasses. Look for the "NATIVE, Naturally." logo on the tag. Northern Sunset Perennials are available at many fine retailers in southeast Wisconsin and northern Illinois. Find a retailer near you, learn more about our products or our Colors of Success labeling system, by visiting our web site. At Northern Sunset Perennials, we believe in the power of native species for diversity, reliability, and beauty.



### ONE Plus Inc

113 West Main Street, Sun Prairie WI 53590

(608) 837-8022

oneplus@chorus.net

www.oneplusarchitecture.com

Madison Chapter

ONE Plus Architecture provides sustainable architectural design services for commercial, residential, and institutional clients. As our logo suggests, there is No Excuse for not taking care of the Earth – together we can and will make a difference in that effort. Our commitment to the Wild Ones, both personally and professionally, is only part of our devotion to that endeavor. ONE Plus design services include renovation, rehabilitation and adaptation of existing buildings, daylighting, passive solar and energy-efficient new building design. Our facility-evaluation services can help you extend the life of your existing buildings and reduce your energy consumption and carbon footprint. Our business-continuity-planning



services will help you reduce your risk in the event of a disaster, and improve your chances for survival. With clients and projects in a dozen states, ONE Plus serves facility owners throughout the Midwest and the nation. Mention this listing when contracting for our services, and we will donate 5% of your fees to Wild Ones.

### Prairie Nursery

PO Box 306, Westfield WI 53964

(800) 476-9453 (608) 296-3679

ndiboll@prairienursery.com

www.prairienursery.com

Central Wisconsin Chapter

Since 1972, Prairie Nursery has

been dedicated to improving and rebuilding the environment by encouraging ecological gardening using native plants for soil, water, and habitat conservation. Our mission is to preserve native plants and animals by helping people create attractive, non-polluting natural landscapes that can support a diversity of wildlife. Prairie Nursery specializes in hardy native flowers and grasses for prairies, woodlands, and wetlands. We have a large selection of plant gardens and seed mixes for virtually any soil, moisture, or light conditions. Prairie Nursery also offers professional consulting and installation services. Get your free Prairie Nursery catalog and growing guide. Visit our retail store for select plants, seeds, and books. Explore our extensive new demonstration gardens. Guided tours are the third Saturday of June and August. Self-guided tours any time.



### Stone Silo Prairie Gardens LLP

4500 Oak Ridge Cir, De Pere WI 54115

(920) 336-1662 (920) 336-5745 fax

info@stonesiloprairiegardens.com

www.stonesiloprairiegardens.com

Green Bay Chapter **STONE SILO PRAIRIE GARDENS**

Our business is committed to the preservation of native species and their use in a homeowner's landscape design. We specialize in growing native Wisconsin grasses and wildflowers that can be used in gardens and landscape designs for your home. We have a large selection of plants for rain gardens as well. See our plant list, order online, or visit us at our greenhouse in the Green Bay, Wisconsin, area. Stop by and see our new prairie, gardens, and rain garden.

**When visiting any of our Business or Affiliate Members, show them your Wild Ones I.D. card, and let them know you heard about them through Wild Ones. Remember that some Business Members give discounts to Wild Ones members.**

## WILD ONES CORE VALUES



**Respect:** Our mission stems from our respect for the other species on this planet and future generations. We will treat each other – our staff, members and volunteers – with respect at all times. We respect different tastes in landscaping but also ask that others show respect for the common good by considering how they can conserve resources and improve the environment via the inclusion of native plants in their landscapes.

**Personalized support:** our members value the opportunity for direct contact with other Wild Ones members and the ability to "learn locally." This sets Wild Ones apart from many similar organizations. Networking and education are our most important functions.

**Appreciation:** To keep our dues low and our efforts local, Wild Ones is a grass-roots organization that runs primarily on volunteer effort. We will continue to rely on volunteers to carry our mission forward. We will support our volunteers and recognize their efforts, especially those in volunteer leadership positions.

**All members are valuable members:** At the national level our income is largely derived from member dues and donations. We appreciate all members, respecting that everyone has varying priorities and demands on their time which impact their ability to volunteer.

**Fresh and adaptable:** While we stay focused on our core abilities and goals we will continually look for and solicit ideas from our Board, our members and honorary directors for new strategies we might use to further our goal of promoting sustainable landscape practices.





## AFFILIATE NOT-FOR-PROFIT ORGANIZATION MEMBERS

### ILLINOIS

#### Taskforce on Waukegan Neighborhoods

128 N West Street, Waukegan IL 60085  
(847) 917-8310 (847) 599-0404  
finnnada@waukegan.com  
Lake-To-Prairie Chapter

**Taskforce**

### MICHIGAN

#### Chippewa Nature Center

400 S Badour Rd, Midland MI 48640  
(989) 631-0830  
dtouvell@chippewanaturecenter.org  
www.chippewanaturecenter.org  
Mid-Mitten Chapter

Chippewa Nature Center is private, non-profit organization whose mission is to inspire people and institutions to protect the natural world. The Center includes 1,200-acres of woodlands, wetlands, rivers, and upland fields. There are more than 15 miles of hiking trails open daily, including the Chippewa Trail, a 3.5-mile recreational trail to downtown Midland. A wide variety of programs are offered year-round for children, families, and adults, along with school programs, Nature Preschool and Summer Nature Day Camp. CNC is also home to a complex of three restored log buildings, encouraging visitors to step back in time. The Center offers free admission daily, except during major events. A native-plant sale held each spring offers native genotype plants, advice, and help with planning natural areas. Wildflower and fungi hikes throughout the year and the Garrett Arboretum of Michigan Trees and Shrubs encourage participants to use native plants. Lots of other hikes, field trips, and workshops are also part of the daily schedule. Visit our web site for current program information.



#### Kalamazoo Nature Center

7000 N Westnedge Ave, Kalamazoo MI 49007  
(269) 381-1574  
sreading@naturecenter.org  
www.naturecenter.org  
Kalamazoo Area Chapter



The Kalamazoo Nature Center is a not-for-profit organization whose mission is to inspire people to care for the environment by providing experiences that lead them to understand their connection to the natural world. Our Community Wildlife Program works with businesses, golf courses, schools, and private land owners to enhance wildlife habitat through native landscaping. We can assist with site evaluation, plant selection, design, and installation. Our Great Lakes Ecological Program offers services such as site evaluation, management-plan development and implementation. Specializing in invasive-species control and prescribed fire the Great Lakes Ecological Management team has worked with government, non-profits, and private landowners to implement large- and small-scale restoration activities.

#### MCC Gardening Association

Mott Community College  
1401 E Court St, Flint MI 48503  
(810) 762-0455

rebecca.gale@mcc.edu  
www.gardening.mcc.edu  
Flint River Chapter



The purpose of the Mott Community College Gardening Association (MCCGA) is to educate students and the community

on basic horticultural practices and their benefits through lectures, volunteer projects, and gardening-related activities in and around the MCC campuses, as well as in our community. We began installation of a native plant garden in spring, 2005, which will demonstrate and help us to share the benefits of re-building native-plant habitats. We've established the Campus Beautification Endowment fund to support MCC campus gardens and the educational benefits they afford our students. Tax-deductible donations may be made payable to the Foundation for Mott Community College (501(c)3) and mailed to the address above.

### WISCONSIN

#### Heckrodt Wetland Reserve

1305 Plank Road (Highway 114),  
Menasha WI 54952  
(920) 720-9349  
heckrodtwetland.tk@tds.net  
www.heckrodtwetland.com

Fox Valley Area Chapter Heckrodt Wetland Reserve includes 76 acres of forested wetland, wetland meadow, open-water, and upland-field communities. The wheelchair- and stroller-friendly 3-plus-mile trail system includes a boardwalk that allows access to the wetland without getting wet feet. Facilities include a nature center with indoor living wetland and live reptiles, amphibians, and fish, as well as mounted specimens of Wisconsin mammals and bird species. Educational programs are provided for schools, daycares, special focus groups, and the general public. Our goal is to provide visitor education while fostering an ethic of environmental stewardship in a fun, hands-on atmosphere. Information about the reserve and its programs can be found on our web site.



#### Outagamie County Housing Authority

3020 E Winslow Ave, Appleton WI 54911  
(920) 731-9781  
jlincoln@outagamiehousing.us  
www.outagamiehousing.us  
Fox Valley Area Chapter

**Outagamie County**

#### The Bridge-Between Retreat Center

4471 Flaherty Lane, Denmark WI 54208  
(920) 864-7230  
bbrci@theglobalnet.net  
www.bridge-between.org  
Green Bay Chapter



The Bridge-Between Retreat Center, established in 1987, is nestled in the countryside on a 100-year-old working farm. The Bridge's mission is to provide a contemplative place in which to deepen relationships with God, self, neighbor, and Creation. We serve both soul and soil, recognizing the sacredness in all of life from the microorganisms in the organic garden to the farm animals and wild critters. We strive to honor Earth in all that we do, building a vision for a sustainable future. The center offers over-night retreats for groups and individuals (self-directed or guided) spiritual direction, workshops, special events, and off-site speaking engagements. All are welcome at The Bridge – whatever your spiritual beliefs may be. Come, enjoy the farmstead, join in a family-style meal, learn, relax, pause, and appreciate all of Creation's sacredness. Volunteer opportunities abound.

Almost all the photos used in the Wild Ones Yellow Pages were taken by Wild Ones members, for our annual photo contests, and for other occasions.



# Are You Ready for a Wild Idea? Join Wild Ones as a Business Member or an Affiliate Not-for-Profit Organization Member Grow Your Organization Along With Wild Ones.



Wild Ones: Native Plants, Natural Landscapes promotes environmentally sound landscaping practices to preserve biodiversity through the preservation, restoration, and establishment of native-plant communities. Wild Ones, a voice for the natural landscaping movement, was established in 1979, and now has more than 50 chapters in North America.

Wild Ones events include seed gathering, seed exchanges, plant rescues, plant sales, speaker presentations, bus tours, garden tours, conferences, and community projects. New chapters are forming all the time. For a current listing of chapter locations, visit our web site or contact us directly.

Wild Ones: Native Plants, Natural Landscapes is a not-for-profit educational organization. Your Business Membership or Affiliate Membership donation is fully tax-deductible.

## **Benefits of membership for Wild Ones Business Members and Affiliate Members**

Join this growing movement today. As a Wild Ones Business Member or Affiliate Member, your organization is entitled to these great benefits:

- Acknowledgement in the *Wild Ones Journal*.
- Annual listing in the *Wild Ones Journal*.
- Listing on Wild Ones web site ([www.for-wild.org](http://www.for-wild.org)).

And to share with your employees and clients:

- Extra copies of the *Wild Ones New Member Handbook*.
- Extra copies of the bi-monthly *Wild Ones Journal*.
- Copies of Wild Ones educational brochures to share with clients and the community.
- Wild Ones Recognition Decal for your office or shop window.

Your Business Membership or Affiliate Membership entitles you and your organization to participate in all Wild Ones national and chapter activities, either locally or across the United States – a great networking opportunity.

Wild Ones: Native Plants, Natural Landscapes  
P.O. Box 1274 • Appleton, Wisconsin 54912  
Toll-Free 877-394-9453 • [www.for-wild.org](http://www.for-wild.org)

## **A few words about the new Affiliate Not-for-Profit Organization Membership**

The benefits of membership are pretty much the same for Business Members and Affiliate Members. The difference is that, in the *Wild Ones Journal*, the Yellow Pages, and on our web site, Affiliate Members will be listed with other not-for-profit organizations instead of with for-profit businesses.

With this new membership category, people looking for information about your organization will likely look in our Affiliates listing first.

It is our goal to form a “partnership” with other not-for-profit organizations in order to enlarge the circle of influence, spreading the word about the benefits of using native plants, and the need for maintaining biodiversity.



Visit us at the WILD Center  
(Wild Ones Institute of Learning and Development)  
2285 Butte West des Morts Beach Road • Neenah, Wisconsin 54956

**Join today, and find out what other Wild Ones Business Members  
and Affiliate Members already know.**

# Plant-Insect Interactions: Willows and Pollinators

Jennifer Hopwood, Xerces Society



The larvae of the *Antheraea polyphemus* moth, commonly referred to as polyphemus larvae, are most commonly found feeding on willows, birches, elms, hickories, maples, oaks, and basswood trees. Photo courtesy of Lacy L. Hyche, Auburn University, Bugwood.org.



The larvae of the *Hyalophora cecropia* moth, commonly referred to as cecropia larvae, feed most commonly on the leaves of willows, maples, American plum, black cherry, oak, poplar, sassafras, and birch trees. Photo courtesy of Lacy L. Hyche, Auburn University, Bugwood.org.

One of the early signs of spring is the appearance of the silky catkins of pussy willows (*Salix discolor*). While most plants that produce catkins are wind-pollinated, willows rely on insects to spread their pollen. Although the flowers of willow are not showy, willows provide sugary nectar and protein-filled pollen, vital food to pollinators. In return, an assortment of bees,

*Some wild bees are vernal, and live only a few short weeks in the spring. These bees are particularly reliant on pussy willow.*

flies, wasps, beetles, and a few butterflies transport willow pollen between flowers, promoting the plant's genetic diversity and survival.

Bees are particularly efficient pollinators of many plants, and contribute substantially to crop production as well as pollination in natural areas. Honey bees (*Apis mellifera*) introduced to North America by European settlers are the most familiar of bee species. Their social colonies are relatively easy to manage for honey production and agricultural pollination. Honey beekeepers often plant pussy willows on their land to provide an early source of nutrition for their honey bee hives.

Though not nearly as familiar as honey bees, at least four thousand species of native wild bees call the United States their

home. These bees are also excellent pollinators, and most are shy and solitary – working alone to build a small nest – either in the ground or inside a cavity.

Their biology makes them less conducive to direct management than honey bees, but they can be supported through proper maintenance of habitat. In the early spring, when few plants are in bloom, willow is an important source of food for our wild bees. The presence of willows in an agricultural landscape can benefit cultivated crops by supporting a diversity of pollinators. Native bees that visit willow and are also important pollinators of spring crops include orchard mason bees (*Osmia lignaria*), several bumblebee species (*Bombus*).

Some wild bees are vernal, living as adults for only a few short weeks in the spring. These bees are particularly reliant on pussy willow. There are species of bees in the genus *Andrena* that specialize entirely on willow, and synchronize their emergence each spring with its blooming. The bee, *Andrena erythrogaster*, usually emerges after willows begin to flower. Each female builds her nest by digging a long, narrow burrow in the ground, usually in small patches of exposed soil. She then collects only willow pollen, and after mixing it with a bit of nectar, brings it back to her nest. She places a ball of pollen alongside an egg in each cell within her tunnel, providing her offspring with plenty to eat when the eggs hatch. The larva feeds on the store of pollen, then transforms into a pupa, and a tiny bee emerges the following

spring, around the time that pussy willow blooms.

Willows are also the host plant for the caterpillars of several moths (such as polyphemus moth, cecropia silkworm, io moth) and butterflies (red-spotted purple, eastern tiger swallowtail, and viceroy). As adults, these moths and butterflies lay eggs on the leaves of willows. The eggs hatch within days, and the emerging caterpillars feed on the willow leaves. When they are large enough, they form a cocoon (in the case of moths) or a chrysalis (in the case of butterflies). The moths in the giant silk moth family (*Saturniidae*), like polyphemus and cecropia moths, have reduced mouthparts as adults, and cannot feed. Consequently they only live long enough to mate and lay eggs. If the caterpillars of butterflies survive to metamorphose into adults, they

*Willows are also the host plant for the caterpillars of several moths, such as polyphemus, cecropia, io – and several species of butterflies.*

will go on to become pollinators of a variety of summer- and fall-blooming plants.

As the silky catkins of pussy willows transform into small modest flowers this spring, watch for the first pollinators that also herald the arrival of the growing season. \*

See <http://pollinator.org/guides.htm> for more information on pollinator-appropriate plants.



The flowers of milkweed are important nectar sources for all pollinators.

ridges, the soil is thin, somewhat sterile, and has a pH in the 5.5 to 5.8 range. However, as a result of composting leaves, pockets of humus-rich soil create opportunities for a wide variety of perennials. Design goals include working with, and sometimes enhancing natural land features to locate these pockets in logical places.

In addition to ongoing investigations into propagation of a number of species, including several rare and endangered, major projects include:

- The development of a half-acre stroll garden inspired by Japanese design at several major public gardens.
- The development of tall-grass gardens where natives are used in a decorative rather than field sense.
- Ongoing development of a large rain garden as a woodland thicket that resolves stormwater runoff problems, reduces human footprint on the landscape, and supports groundwater supply.
- Use of a broad collection of natives in a landscape sense that also restore an ecosystem supportive of varied wildlife, particularly birds and pollinators.
- Ongoing efforts to learn the most effective ways to combat invasive species, particularly Japanese stiltgrass and garlic mustard.

As with all gardens, Pennystone is never static, and continues to evolve. Although substantial amounts of cultivation and environmental data exist about a large number of native species, soil and climate variables prompt continual adjustment.

Selection choices also impact the garden; for example, historical observation suggests some species might be found in all the surrounding counties, but not this one. Does that mean it should be excluded even though the habitats are identical? Additionally, specimens acquired early on that flourish are later discovered to be from other parts of the state. Should they be banished? And species that theoretically are appropriate for woodland landscapes in this county do not appear to fit in. Is it mismanagement, or do they really belong in a slightly different ecosystem altogether?

We are concerned about environmental matters, and support the notion that the single best hope for conservation and preservation of native species is in the individual gardens of homeowners. However, Pennystone is not an attempt at forest restoration or even creating a wild woodland.

Our goal is to landscape for visual pleasure and botanical amusement, just like any other gardening enthusiast. Species selection is focused to use those that are appropriate for the habitat, because the success rate is higher, because they are most intriguing, and because they support sustainable landscaping and habitats for a variety of creatures with whom we share a scrap of land.

The garden began like most: install and defend a lawn, comb the local garden centers for plants that do well in part shade and will be ignored by deer, and which require a minimal amount of work.

Over time we learned that lawns in the woods are more work than they are worth, and an offense to nature at that, and garden centers sell alien species that require a considerable amount of pampering to survive in a difficult habitat (and will be eaten by

*The last best hope for preservation of native species is in the gardens of home owners.*

deer anyway). Finally, gardens are supposed to be work. Size and complexity may be defined by time and individual resources, but the physical and mental labor is what makes a garden uniquely our own, and leaves us at the end of a day with a sense of accomplishment.

While native species can survive quite well without us, a well-groomed garden that pleases the eye and comforts the soul involves care and attention, just like any other garden.

Of course, the difference is that with such gardens, we are doing our bit for the larger ecosystem. Nothing terribly wrong about that, is there? \*



*Aruncus dioicus* or goatsbeard, which may grow to 5 feet, is grouped here with ferns, bloodroot, and Solomon's seal.

Is Wild Ones Really  
on Facebook?  
Yes. It's true.

facebook®

**Become a Fan of our Wild Ones page, and a Friend of Donna VanBuecken's page.**

Stop in at our Wild Ones Facebook page to see what we're saying about natural landscaping. It's easy to become a "fan" of Wild Ones, and then whenever we add something new, you will be among the first to know about it. Our temporary address is:

[www.facebook.com/pages/Wild-Ones/220999458625](http://www.facebook.com/pages/Wild-Ones/220999458625)

Our National Director, Donna VanBuecken wants you to become her Facebook friend. This is important, because in the near future she'll be using her Facebook page to make special announcements, and to let you know about other important Wild Ones news.

Don't be left out. Please go to her page, and "friend" her today:

[www.facebook.com/profile.php?id=100000561611806](http://www.facebook.com/profile.php?id=100000561611806)



## 2010 The Year to Grow Wild Ones

### Wild Ones Has to Grow

In 2010 we hope to Grow Wild Ones through a promotional campaign aimed at convincing the general public to grow native plants, increasing Wild Ones' recognition and membership, and promoting the new WILD Center in the Fox River Valley, Wisconsin.

### Your Generosity

These things will more readily be accomplished because of the generosity of our members in their annual donations.

### The Participation of Every Member

To be truly successful, however, we need every member's participation through not only donations to Wild Ones to support our efforts to Grow Wild Ones but also through personal contact and promotion of the Wild Ones mission.

### Thank You

As we celebrate thirty years of Wild Ones, thank you for your continued support. Your membership and your affirmation are greatly appreciated and we'll thank you all properly in a later issue of the *Journal*.

### NATIVE PLANTS TAKE ON LOCAL WEED AND LANDSCAPING ORDINANCES CONTINUED FROM PAGE 4

the road. We believe that a fall mowing or a prescribed burn in this area will not hurt the native species, and may provide an aesthetic relief to members of the Township Board during the winter months.

A habitat-restoration sign in our yard might also help. We are also hoping to present information at future Township meetings, and to develop an informational handout that Township officials may distribute. We hope the Board will permit us to help them modify the current ordinance, eliminating the inaccurate information on "weeds."

During our initial data-gathering effort, we reached out for support to several of our friends and colleagues in the natural resources industry. The request spread like a well-handled prescribed burn. We were deluged with supportive letters from property owners, Wild Ones members, neighbors, biologists, university professors, restoration experts, and acclaimed botanists. This response and support heartened us. It was, and will continue to be, invaluable to address our Township's outdated weed ordinance. One of the most helpful pieces of information provided can be found on the U.S. Environmental Protection Agency's web site [www.epa.gov/greenacres/weedlaws/JMLR.html](http://www.epa.gov/greenacres/weedlaws/JMLR.html)). This paper, written by Wild Ones member, Bret Rappaport, attorney-at-law, summarizes, documents, and provides citations from court cases around the country, where individual landowners have had to defend their native landscapes against local noxious-weed ordinances.

The supporting information and experts are out there. We all need to work collectively in our own neighborhoods and townships to educate the public whenever we can. In local politics, straight-forward ecological arguments don't always go as far as they should. However, when we can stress all the benefits to public health, safety, and economics, we just might start getting somewhere. \*

Visit the Wild Ones web site at [www.for-wild.org/weedlaws/weedlaw.html](http://www.for-wild.org/weedlaws/weedlaw.html) for the document cited above, along with many other helpful documents and links.



### Making a difference by design!

- **Focus:** Ecologically and socially sustainable landscape planning & design
- **Program:** Accredited ten-month graduate program for just 19 students at a time, founded in 1972
- **Method:** Practical learning through real projects for real clients, at multiple scales
- **Location:** Wooded hilltop campus in scenic western Massachusetts

Contact: Nancy Braxton, Director of Admissions  
Conway School of Landscape Design  
332 S. Deerfield Road | PO Box 179  
Conway, MA 01341, 413-369-4044 x5  
[www.csls.edu](http://www.csls.edu)

## Native Prairie Seed and Plants

DESIGN • INSTALLATION • RESTORATION

500 Species of Native  
Seeds & Plants

Natural Landscaping of  
Corporate Campuses

Prairie & Wetland  
Restoration

Planting Design  
& Installation



Phone: 608.897.8641 • Fax: 608.897.8486

email: [info@appliedeco.com](mailto:info@appliedeco.com)

[www.appliedeco.com](http://www.appliedeco.com)

Subsidiary of Applied Ecological Services, Inc.



green

dwel in possibility  
-emily dickinson

- open spaces • green homes •
- holistic schools • walking trails •
- connected community •
- organic foods and farms •
- endless possibilities •



live the life you've imagined  
-thoreau

[www.fieldsneighborhood.org](http://www.fieldsneighborhood.org)

# OUT BACK NURSERY, INC.

"Where Ecology and Horticulture Unite"™

Specializing in  
**Native trees,  
shrubs &  
perennials.**

Consulting, Design  
& Landscape  
Installation.

"May we be your guides?"<sup>SM</sup>

(651) 438-2771 • (651) 438-3816 Fax  
Toll-Free (800) 651-3626

15280 110th Street South  
Hastings, Minnesota 55033

www.outbacknursery.com

Hours: Monday - Friday 8 to 5 PM  
Saturday - 9 to 4 PM  
Or by appointment.

The largest selection of native plants in the region.



# JFN New

Native Seed Mixes • Live Stakes & Fascines  
Plant Plugs & Gallons • Design Consultation  
Site Inspections • Bare-root Trees & Shrubs

nurserysales@JFNNew.com 574.586.2412 www.JFNNew.com



## Meet New Friends at Prairie Nursery

Prairie Nursery specializes in hardy native flowers and grasses for prairies, woodlands and wetlands.

We have a large selection of plant gardens and seed mixes for virtually any soil, moisture or light conditions.

Prairie Nursery offers professional consulting and installation services.

Visit our website to sign up for our new free e-newsletter!

**Get Your Free Prairie Nursery  
2010 Catalog & Growing Guide**

**Call toll-free at 800-476-9453**

If you can't visit our nursery, please visit us online at:

www.prairienursery.com

**Guided Tours are the  
3rd Saturday of June & August  
at 10 AM and 1 PM**  
Saturday, June 19, 2010  
Saturday, August 21, 2010

Self-guided tours any time!  
Private tours with groups of 20 or  
more, please call for appointment.

Visit our retail store for select  
plants, seeds and books.

**Retail Store Hours:**  
9 AM - 5 PM Mon - Fri  
(April 9th - Oct. 8th)

9 AM - 4 PM Saturdays  
(April 10th - Sept 25th)

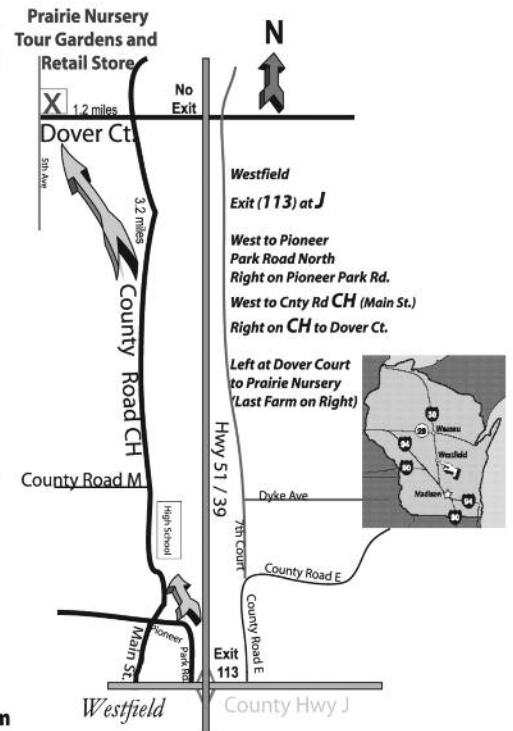
Retail Store Phone: (608) 296-2914



P.O. Box 306 Westfield, WI 53964

Email us at: cs@prairienursery.com

## Visit Our Retail Store & Explore Our Display Gardens!



## Architecture

Commercial & Residential  
Sustainable Design  
Business Continuity-  
Disaster Planning  
Facility Assessments  
Forensic Investigations  
Contract Administration  
Project Management



## ONE Plus, Inc.

113 West Main  
Sun Prairie, WI 53590-2905  
e-mail: [oneplus@chorus.net](mailto:oneplus@chorus.net)  
608/837-8022 Fax 608/837-8132  
Wisconsin, Iowa, Illinois & Minnesota  
Five percent of Wild Ones-generated  
fees will be donated to Wild Ones  
National general operating fund.  
Reference this ad to help support  
our national activities.



## Love Orchids?

We have been growing orchids  
from seed in our laboratory since  
1989 from local genetic stock.

Come see these and other fine  
native plants at the Dane County  
Farmers' Market or at the farm  
(call ahead for hours). Complete  
list on our web site,  
[www.bluestemfarm.com](http://www.bluestemfarm.com)

Bluestem Farm  
S5920 Lehman Rd.  
Baraboo, WI 53913  
608-356-0179

## Great Stuff at the Wild Ones Store



**Wild Ones Embroidered Denim  
Shirts** Now that the cooler weather  
is here, you can be outside and warm  
and still be stylish in one of these  
eye-catching denim shirts.  
Professionally embroidered with  
the Wild Ones logo. **\$44**  
With the famous "Yesterday's Lawn,  
Tomorrow's Habitat." **\$55**

### Long-Sleeve Roots T-Shirts

The roots  
of native plants  
grow deep, and  
here's a great way  
to show off that  
important fact.  
Display your "wild-  
ness" with "Roots" on front, and  
the Wild Ones logo on the back.  
Cool and unique. Several colors  
available. **\$22**



**Sweatshirts for  
Wild Ones** Not for  
bears only, these  
sweatshirts are per-  
fect for cool nights in  
the woods or out in  
the yard. Lots of col-  
ors, sizes, and designs.

Get one now. Roots design **\$35**

**Yesterday's Lawn  
Sweatshirts** You'll  
stay nice and warm  
while showing off the  
"Yesterday's Lawn"  
message on this shirt.  
Available in various  
sizes. Great gift idea. **\$52**  
Logo only on front. **\$41**



### Order Online

For more information, contact the  
National Office at 877-394-9453.  
Checks payable to Wild Ones at:  
Wild Ones Merchandise, P.O. Box 1274,  
Appleton, Wisconsin 54912. Prices  
include shipping and handling. For  
maximum convenience, order online  
at [www.for-wild.org/store/](http://www.for-wild.org/store/).



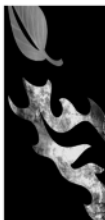
The Clearing is an adult "folk  
school" founded in 1935 by  
renowned landscape architect, Jens  
Jensen. One of the pioneers of the  
native plant movement, Jensen  
believed that one's own regional  
ecology and culture is fundamental  
to all "clear" thinking.



On the State and National  
Registers of Historic Places

ELLISON BAY, WISCONSIN  
TOLL FREE: 877.854.3225  
[WWW.THECLEARING.ORG](http://WWW.THECLEARING.ORG)

**David  
Borneman** LLC



[www.RestoringNatureWithFire.com](http://www.RestoringNatureWithFire.com)

Ecological  
Restoration  
Specializing  
In  
Prescribed  
Fire  
And  
Ecological  
Management  
Consulting

~ ~ ~ ~ ~

1123 Mixtwood  
Ann Arbor, MI  
734.994.3475

[davidborneman@yahoo.com](mailto:davidborneman@yahoo.com)

# The Meeting Place

Chapters, please send your chapter contact information to:  
Meeting Place Coordinator Mary Paquette  
N2026 Cedar Road • Adell, Wisconsin 53001  
920-994-2505 • meeting@for-wild.org  
Chapter ID numbers are listed after names.



Meet us online at [www.for-wild.org/calendar.html](http://www.for-wild.org/calendar.html)

## CONNECTICUT

**Mountain Laurel Chapter #78**  
Kathy T. Dame 860-439-5060  
ktdame@comcast.net

## ILLINOIS

**Greater DuPage Chapter #9**  
Pat Clancy 630-964-0448 clancypj@sbcglobal.net

**Northern Kane County #88**  
Pat Hill 847-741-7284 hill\_p@sbcglobal.net

**Lake-To-Prairie Chapter #11**  
Karin Wisiol 847-548-1650 kawisioi@pcbb.net

**Macomb Chapter #42 (Seedling)**  
Margaret Ovitt 309-836-6231  
card@macomb.com

**North Park Chapter #27**  
Wilma McCallister  
bug788@gmail.com

**Rock River Valley Chapter #21**  
Constance McCarthy 815-282-0316  
kublaikhan@mac.com

## INDIANA

**Gibson Woods Chapter #38**  
Joy Bower 219-844-3188 jbower1126@aol.com  
Pat Rosenwinkel patrosen@sbcglobal.net

## KENTUCKY

**Lexington Chapter #64**  
Ann Bowe 859-509-4040  
annbowe@annbowedesigns.com

**Louisville Metrowild Chapter #26**  
Rick Harned 502-897-2485  
r.harned@insightbb.com  
wildones-lou@insightbb.com

## MICHIGAN

**Ann Arbor Chapter #3**  
Susan Bryan 734-622-9997  
susanbryanhsieh@yahoo.com

**Calhoun County Chapter #39**  
Carol Spanninga 517-857-3766  
spanninga8@hotmail.com

**Central Upper Peninsula Chapter #61**  
Jeanne Rose 906-789-1442  
jeannerose@chartermi.net  
Tom Tauzer 906-428-3203 ttauzer@chartermi.net

**Detroit Metro Chapter #47**  
Connie Manley 248-538-0654  
cmanfarm@mich.distance.net

**Flint River Chapter #32**  
Rebecca Gale-Gonzales 810-715-3754  
rebecca.gale@mcc.edu

**Houghton-Hancock Chapter #60 (Seedling)**  
Kristine Bradof 906-482-0446 kbradof@mtu.edu

**Kalamazoo Area Chapter #37**  
Dave Wendling 269-624-6946 davewndlng@aol.com  
Tom Small 269-381-4946 yard2prairy@aol.com

**Mid-Mitten Chapter #80**  
Dawn Zuengler 989-430-7735  
dzuengler@yahoo.com

**Oakland Chapter #34**  
Barbara Bray 248-601-6405  
brayfamily\_mi@comcast.net

**Oakland Headwaters Chapter #91**  
Barbara Bray 248-601-6405  
brayfamily\_mi@comcast.net

**Red Cedar Chapter #41**  
Kathy Prelesnik 517-580-8322  
bottletreegirl@yahoo.com

**River City - Grand Rapids Area Chapter #83**  
Amy Heilman 616-308-8176  
amy.heilman@sbcglobal.net  
Kory Manion 616-307-7446  
koryquimby@hotmail.com

## MINNESOTA

**Arrowhead Chapter #48**  
Carol Andrews 218-529-8204  
candrews@barr.com

**Brainerd Chapter #90**  
Eleanor Burkett 218-232-4847  
erburkett@live.com

**Otter Tail Chapter #25**  
Teresa Jaskiewicz 218-736-0137  
tjnaturenerd@gmail.com

**St. Cloud Chapter #29**  
Brian Johnson 320-356-9462  
bjohnson@csbsju.edu

**St. Croix Oak Savanna Chapter #71**  
Diane Hilscher 651-436-3836  
hilscherdesign@comcast.net  
Roger Miller st.croix.wild.ones@mac.com

**Twin Cities Chapter #56**  
Marty Rice 952-927-6531 jcrmf@msn.com

## MISSOURI

**Mid-Missouri Chapter #49**  
Susan Melia-Hancock 573-442-3670  
susan.meliahancock@gmail.com

**St. Louis Chapter #31**  
Ed Schmidt 214-647-1608  
eschmidt1@sbcglobal.net

## NEW YORK

**Habitat Gardening in Central New York #76**  
Janet Allen 315-487-5742  
hg.cny@verizon.net

**Niagara Falls & River Region Chapter #87**  
Michelle Vanstrom 716-913-5324  
vanshel400@aol.com

## OHIO

**Akron #99 (Seedling)**  
Kim Downs kimdowns@smithersmail.com

**Greater Cincinnati Chapter #62**  
Chris McCullough 513-860-4959  
iluvdirt@fuse.net

**Columbus Chapter #4**  
Jann Offutt joffutt@columbus.rr.com

**Toledo Chapter #77**  
Stephanie Saba 419-261-7000  
nativebeauty3@gmail.com

**Western Reserve Chapter #73**  
Barb Holtz 440-247-7075  
bph@clevelandmetroparks.com

## PENNSYLVANIA

**Habitat Resource Network of Southeast Pennsylvania Chapter #79**  
Maureen Carbery 484-678-6200  
pahabitat@comcast.net

## WISCONSIN

**Central Wisconsin Chapter #50**  
Dan Dieterich 715-346-2849  
dan.dieterich@uwsp.edu

**Door County Chapter #59**  
Peter Sigman 920-824-5193 peter@sigmann.net

**Fox Valley Area Chapter #8**  
Kris Kauth 920-766-2292 kkauth@sbcglobal.net

**Green Bay Chapter #10**  
Bonnie Vastag 920-217-7737  
norway995@gmail.com

**Lake Woods Chapter #72**  
Gladwyn Doughman 920-684-9483

**Madison Chapter #13**  
Laurie J. Yahr 608-274-6539  
yahrkahl@sbcglobal.net  
Barb Glassel 608-819-0087 bglassel@gmail.com

**Menomonee River Area Chapter #16**  
Carolyn Larkin 414-881-4017  
plantlarkin@gmail.com

**Milwaukee North Chapter #18**  
Message Center: 414-299-9888x1

**Milwaukee Southwest-Wehr Chapter #23**  
Message Center: 414-299-9888x2

**Root River Area Chapter #43**  
Nan Calvert 262-681-4899  
native.plant.calvert@gmail.com

**Sheboygan Area Tension Zone Chapter #81**  
Jeff Kelm 920-803-0704  
kelm@att.net

**Wolf River Chapter #74**  
Mary Kuester 715-526-3401  
Sue Templeman boosue@frontiernet.net

For information about starting a chapter in your area: [www.for-wild.org/chapters.html](http://www.for-wild.org/chapters.html).

### Welcome to our newest chapter.

Oakland Headwaters (MI) Chapter, in Michigan, recently chartered with 12 members. Located in and around the Clarkston Township, this new chapter spun off from the Oakland (MI) Chapter. James Brueck is Charter President. Congratulations to both chapters.



# North American Native Plant Society Celebrates 25 Years

In 1984, James French, a budding native-plant gardener, replied to a reader's request in a gardening column in Canada's national newspaper, *The Globe and Mail*. The reader wanted to know where to get wildflower seeds or plants. Over the next few weeks Jim received a dozen requests from others wanting the same information. He decided that this was an opportunity to meet and mingle with those who shared his passion. He wrote back to these folks, with a copy to the columnist, suggesting they meet, and call themselves The Canadian Wildflower Society. The next *Globe* gardening column was headlined "Wildflower Aficionados Wanted."

"To my amazement," says Jim, "the phone rang off the hook, and mail arrived in great numbers. I held a wine-and-cheese party at my home, we formed our first board, and the rest, as they say, is history."

The Canadian Wildflower Society (CWS) went on to scale dizzying heights. With co-founder biologist James Hodgins at its helm, CWS published *Wildflower*, a glossy quarterly magazine dedicated to the study, conservation, and cultivation of North America's wild flora. It featured articles, poetry, and reviews from renowned botanists, unassuming gardeners, and everyone in between. Art director Zile Zichmanis chose stunning artwork for each cover and to accompany the text.

The Society organized wildly popular annual plant sales and seed exchanges, purchased an old-growth, fifty-acre Carolinian woodlot, home to endangered cucumber magnolias, instituted a conservation award, and conducted native plant garden tours. Several other publications followed. Recognizing the value of developing a bioregional strategy, CWS became very much involved with the Eastern Native Plant Alliance, and contributed to the work of like-minded groups. A network of affiliated chapters was set up across Canada. Another founding member, Tom Atkinson, notes that "we were almost like missionaries in our zeal."

Larry Lamb, also a founding member, notes that the biggest flaw in the organization was the lack of paid staff. All the work (except for the publication of *Wildflower*) was done by volunteers, and burnout was inevitable.

The Canadian Wildflower Society was eventually shaken by differences of opinion, and in the end, became the North American Native Plant Society (NANPS).

NANPS has persevered and continued to garner successes. A few years ago we purchased a small but significant parcel of alvar on the Bruce Peninsula. We created one of the earliest native-plant web sites in Canada, ([www.nanps.org](http://www.nanps.org)), and developed a speakers' series. Prairie and woodland restorations and plant rescues figure among our activities, the conservation award thrives, and the plant sale and seed exchange continue to provide plants and seeds for newly converted gardeners and old hands. The more modest *Blazing Star* has taken over from *Wildflower* as our society's quarterly.

Our influence has permeated all corners of society. Larry Lamb points to the number of native-plant nurseries that have sprung up over the years, and gives examples where even governments have "gone native." Waterloo Region, a municipality just west of Toronto, has stipulated in its official plan that native plants must be used in all regional initiatives, such as roadways plantings and landscaping around government buildings. Tom Atkinson mentions that



native plants are almost mainstream today. And despite the setbacks (some municipal governments are still causing grief for naturalized gardeners) the trend has been firmly established.

For our twenty-fifth anniversary we have big plans: an expanded – and color – spring issue of *The Blazing Star*, more tours, speakers, and restorations. We invite members of Wild Ones, our sister organization, to join us for our celebratory events. Visit [www.nanps.org](http://www.nanps.org) for details. \*

## Weeds Gone Wild: Alien Plant Invaders of Natural Areas

is a web-based project of the Plant Conservation Alliance's Alien Plant Working Group, that provides information for the general public, land managers, researchers, and others on the serious threat and impacts of invasive alien (exotic, non-native) plants to the native flora, fauna, and natural ecosystems of the United States.

This site provides a compiled national list of invasive plants infesting natural areas throughout the U.S., background information on the problem of invasive species, illustrated fact sheets that include plant descriptions, native range, distribution and habitat in the U.S., management options, suggested alternative native plants, and other information, and selected links to relevant people and organizations. [www.nps.gov/plants/alien/index.htm](http://www.nps.gov/plants/alien/index.htm).

## NORTHERN SUNSET PERENNIALS

*Nursery-grown*

NATIVE PLANTS OF THE MIDWEST

*for prairie, woodland or natural garden.*



Look for

NATIVE, Naturally!™

on the tag.

*At many fine garden centers in:*

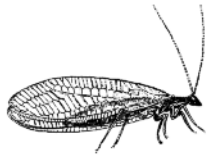
SOUTHEAST WISCONSIN

CENTRAL WISCONSIN

NORTHERN ILLINOIS

*Find them at*

[WWW.NORTHERNSUNSET.COM](http://WWW.NORTHERNSUNSET.COM).



(414) 793-3652  
 Fax: (414) 358-3004  
 lacewing@nase.org  
 Home based in northwest  
 Milwaukee

*LaceWing Gardening, Consulting  
 & Design Services*

Remember, Life Begins in the Garden –  
 Creating Habitats for 9 Years

Naturalized & Habitat Gardens that  
 Attract Butterflies, Hummingbirds,  
 Beneficial Insects & Pollinators;  
 Create a Whole Ecosystem

Garden Consultation, Construction,  
 Designs

Habitat Gardens • Prairies • Raingardens  
 Woodland Gardens • Shade Gardens  
 Stream, River & Lakeside Habitats & Restorations  
 Ponds & Water Gardens • Organic  
 Maintenance • Pest & Disease Controls

**Winter Services**  
 (Nov. - April)

Landscape habitat designs  
 Garden talks

# Landmark Landscape

W3923 County Road O  
 Sheboygan Falls WI 53085  
 (920) 467-6442

[www.landmarklandscapesinc.com](http://www.landmarklandscapesinc.com)

- Design
- Maintenance
- Installation
- Consulting

Promoting sustainable  
 landscape practices and  
 ecological design for  
 the preservation of our  
 earth and her  
 inhabitants



## Prairie Seed Source

P.O. Box 83, North Lake  
 Wisconsin 53064-0083

*Over 170 species from southeastern  
 Wisconsin prairies*



PLEASE  
 SEND  
 \$1 FOR  
 SEED  
 CATALOG

Bob Ahrenhoerster,  
 Prairie Restoration  
 Specialist



VISIT OUR WEB SITE AT [http://www.  
 Ameritech.net/users/rasillon/Seed.html](http://www.Ameritech.net/users/rasillon/Seed.html)



Working to Restore  
 Our Natural World

# Native Connections

*native seed mixes*

*Michigan genotype  
 native grass seed*

*creating & restoring  
 natural landscapes*

*managing land  
 for biodiversity*

17080 Hoshel Road  
 Three Rivers, MI 49093  
 269-580-4765  
[www.nativeconnections.net](http://www.nativeconnections.net)

# The Natural Garden, Inc.

*The Nursery  
 Specializing  
 in Native &  
 Ornamental  
 Perennials  
 & Grasses  
 Since 1953*



**Natives**  
 – Plants & Seeds  
 – Over 250 Species Representing  
 Local/Regional Ecotypes

**Perennials**  
 – Familiar & Unusual

**Herbs**  
 – Extensive Collection

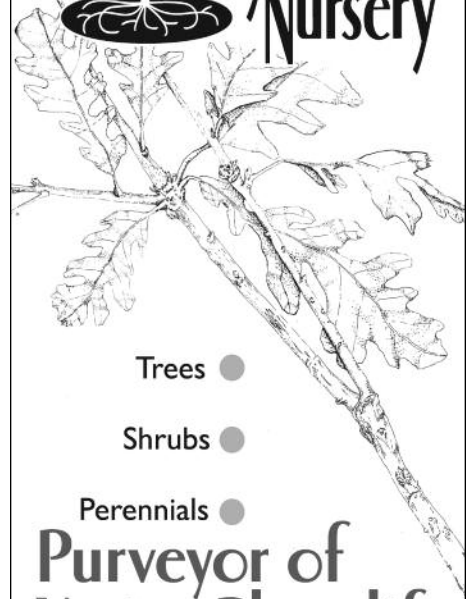
**Experienced Sales Team**  
**Four Acre Garden Center with  
 Display Beds**

*Handgrown with care  
 for a better environment.*

Your **Best Source** for a  
 Diverse Selection of  
 Northern Illinois Natives

**The Natural Garden, Inc.**  
 38W443 Highway 64  
 St. Charles, IL 60175  
 630-584-0150  
[thenaturalgardeninc.com](http://thenaturalgardeninc.com)

## Possibility Place Nursery



Trees ●

Shrubs ●

Perennials ●

**Purveyor of  
 Native Plant life**

**Phone: 708-534-3988**  
**Fax: 708-534-6272**  
[www.possibilityplace.com](http://www.possibilityplace.com)

## Solutions for the Natural Landscaper

### Design and Installation

- Natural landscaping using native plants – prairie, shade, and wetland environments
- Raingardens
- Retaining walls – natural and block (green and plantable)
- Patios – Flagstone & flat rock and permeable, porous and water-retaining pavers

### Maintenance

- Prairie burns
- Restoration
- Bio-detention
- Weed & invasive species control

### Lake Shore Cleaners, Inc.

4623 N. Richmond Street  
Appleton, Wisconsin 54913  
920-734-0747



## Upcoming Activities

**May 22** The 2nd quarter national board meeting will be hosted by the **St. Croix (MN) Chapter of Wild Ones**. Following the meeting, we'll enjoy a picnic lunch at one of the chapter board member's home, and see a re-landscaped yard designed primarily with natives. The woodland plants should be especially nice in May. Then we'll drive to Belwin Conservancy to see their wonderful remnant prairie savanna, where ecological director, Tara Kelly, will lead us on a field trip.

**November 5 & 6** The 4th quarter national meeting, and the 2010 Annual Membership Meeting and Conference will be held at Connecticut College, New London, Connecticut, and hosted by the **Mountain Laurel (CT) Chapter of Wild Ones** in conjunction with the Arboretum's annual SALT Conference. See for further information about SALT [www.conncoll.edu/green/arbo/8597.htm](http://www.conncoll.edu/green/arbo/8597.htm).

## Interesting Downloads

If you have a high-speed Internet connection, or if you just don't mind waiting for big downloads, you might want to look at these:

### Caterpillars of the Eastern Forests (38 mb)

[www.fs.fed.us/foresthealth/technology/pdfs/Caterpillars\\_of\\_Eastern\\_Forests.pdf](http://www.fs.fed.us/foresthealth/technology/pdfs/Caterpillars_of_Eastern_Forests.pdf)

### Caterpillars Feeding in Foliage of Conifers in the Northeastern United States (7 mb)

[www.fs.fed.us/foresthealth/technology/pdfs/ConiferLepidoptera04\\_01.pdf](http://www.fs.fed.us/foresthealth/technology/pdfs/ConiferLepidoptera04_01.pdf)

## Join Wild Ones

As part of our **Grow Wild Ones** campaign, we have recently updated, revamped, and reproduced the popular **Wild About Wildflowers** video in DVD format. And now you can get your own copy at no extra charge when you join Wild Ones or upgrade your existing membership level. See page 3 for full information about this great video.

**New Members:** Join at any membership level, and get the DVD at no extra cost.

**Existing Members:** Get a free copy of our **25 Years of Wild Ones** book free when you renew at the Wild level. Or renew at the Wilder or Wildest level, and get the book and the DVD at no extra cost.



Name \_\_\_\_\_

Address \_\_\_\_\_

City \_\_\_\_\_

State/Zip \_\_\_\_\_

Phone \_\_\_\_\_

E-Mail \_\_\_\_\_

Annual Dues	Wild	Wilder	Wildest
Household	<input type="checkbox"/> \$30	<input type="checkbox"/> \$50	<input type="checkbox"/> \$75+
Business	<input type="checkbox"/> \$200	<input type="checkbox"/> \$500	<input type="checkbox"/> \$1000+
Not-for-Profit			
Affiliate Organization	<input type="checkbox"/> \$75	<input type="checkbox"/> \$100	<input type="checkbox"/> \$125
Limited income/full-time student household			<input type="checkbox"/> \$20/year
Lifetime	<input type="checkbox"/> \$1200 (or payable in three annual \$400 installments)		

I am joining at the  \$50 or higher level.  
 \$75 or higher level.

I also enclose \$ \_\_\_\_\_  
 for The WILD Center  
 for Seeds for Education

Please check:  New  Renewal  
 New contact information

Amount enclosed \$ \_\_\_\_\_ for \_\_\_\_\_ years.

**Chapter preference** (See chapter listing on page 16.)

### Do you want the free Wild About Wildflowers DVD?

If you are joining as a new member, or joining as a Wilder or Wildest member, you qualify for a free copy of our Wild About Wildflowers DVD. Please check here if you want the free DVD.

### Do you want the free 25 Years of Wild Ones book?

If you are renewing at any level, you qualify for a free copy of our 25 Years of Wild Ones book. Please check here if you want the free book.

### If this is a gift membership:

Your Name \_\_\_\_\_

Occasion for Gift \_\_\_\_\_

The entire membership fee is tax deductible.

**Wild Ones • P.O. Box 1274 • Appleton, Wisconsin 54912**



NATIVE PLANTS, NATURAL LANDSCAPES

P.O. Box 1274  
Appleton, WI 54912-1274  
www.for-wild.org

ADDRESS SERVICE REQUESTED

DATED MATERIAL

NONPROFIT ORG.  
US POSTAGE  
**PAID**  
PERMIT NO 90  
OSHKOSH, WI

### Is your membership OK? How about your address?

If the imprint above is dated **5/1/10** or **6/1/10** or **before**, your membership is about to expire.

**Money Going Down the Drain!** If you are moving, either temporarily or permanently, please let the National Office know as soon as your new address is official. Returned and forwarded mail costs Wild Ones anywhere from \$.77 to \$3.77 per piece. *Each issue this adds up to a lot of money that could be used to support our mission.*



**How You Can Help.** When planning a long vacation, or a move, please mail your address information to Wild Ones, P.O. Box 1274, Appleton, Wisconsin 54912, call toll-free at 877-394-9453, or go to the Wild Ones members-only pages at [www.for-wild.org](http://www.for-wild.org). Click on item 2 (Update Personal Membership Info) and enter the appropriate changes. *Thanks!*

## THANK YOU

### MATCHING GIFTS

**Nan & Jeff Calvert, Abbott Lab Employee Giving Program 1:1**  
Root River Area (WI) Chapter

### GENERAL OPERATING FUND

#### Otter Tail Chapter

**Glen Walter Calhoun** County (MI) Chapter

**Carol & Jim Catlin, Sue Detienne, Karen & Mike Syverson, and Thomas Traxler Jr. of Marshland Transplant Aquatic Nursery**  
Fox Valley Area (WI) Chapter

**Carol Scott** Greater Cincinnati (OH) Chapter

**Anne Houle** Greater DuPage (IL) Chapter

**Marylou & Bob Kramer** Green Bay (WI) Chapter

**Catherine Niessink, Dick Seabold, Tom Small and Laurie Young**  
Kalamazoo Area (MI) Chapter

**Carolynn La Barbera** Lake-To-Prairie (IL) Chapter

**Mandy & Ken Ploch** Menomonee River Area (WI) Chapter

**Terry & Gail Pavletic** Milwaukee Southwest-Wehr (WI) Chapter

**Shirlee Hoffman** North Park Village Nature Center (IL) Chapter

**Paulette Arnold (WI), Irene Fedun (Ontario), Maria Webb & Keith Guerin, and Sally Pick (MA)** Partner-at-Large

**Elise Harvey** Red Cedar (MI) Chapter

**Greg Shirley** St. Cloud (MN) Chapter

**Mary Smith** St. Louis (MO) Chapter

**Lisa Scribner & Dean Doering and Richard & Diane Madlon-Kay**  
Twin Cities (MN) Chapter

### WILD ONES JOURNAL

**Root River Area Chapter**

**Oakland Chapter**

### SEEDS FOR EDUCATION

**Christine Stier** Ann Arbor (MI) Chapter

**Darlene Tynn** Central Wisconsin Chapter

**Rich & Janet Carlson, Karen & Mike Syverson, and David & Kathy Wege**  
Fox Valley Area (WI) Chapter

**Pat Clancy** Greater DuPage (IL) Chapter

**Harold & Bonnie Vastag** Green Bay (WI) Chapter

**William Gentry and Julie Martens** Lake-To-Prairie (IL) Chapter

**Stuart Owen** Lexington (KY) Chapter

**Linda Dolan and Bill & Ginny Nelson** Madison (WI) Chapter

**Martha & John Lunz** Milwaukee-North (WI) Chapter

**Anne Bray** Oakland (MI) Chapter

**Jim Countryman** Otter Tail (MN) Chapter

**Betty Hall** (CO) Partner-at-Large

**Michele Murphy and James Wellman** Twin Cities (MN) Chapter

### WILD CENTER

#### Development

#### Wolf River (WI) Chapter

**Rich & Janet Carlson, Kathleen & Jeff Hallett, Jacki Kossik, Catherine Larsen, Harold & Doris Miller, and Karen & Mike Syverson** Fox Valley Area (WI) Chapter

**Patrick O'Hearn & Anita Zipperer** Green Bay (WI) Chapter

**Maria Cattell** Habitat Resource Network of Southeast Pennsylvania Chapter

**Clarissa Chandler and Julie Martens** Lake-To-Prairie (IL) Chapter

**Linda Dolan and Connie Palmer Smalley** Madison (WI) Chapter

**Bill & Carol Klug** Menomonee River Area (WI) Chapter

**Randall Kursinsky** Mid-Mitten (MI) Chapter

**Genevieve Best-Dickson & Robert Dickson and Mike & Sharon Grinker** Milwaukee-North (WI) Chapter

**Rita Olle** Milwaukee-Southwest/Wehr (WI) Chapter

**Dennis Dreher** North Park Village Nature Center (IL) Chapter

**Carol Buxton** Partner-at-Large (MI)

**Phil & Hen Rada** Rock River Valley (IL) Chapter

**Sue Reed** St. Louis (MO) Chapter

#### In-Kind

**Marvin & Barbara Gossen** Four plastic barrels to be used in constructing rainbarrels. Fox Valley Area (WI) Chapter

### WILD ONES AMAZON-ASSOCIATE BOOKSTORE

**Amazon** Over the last two months, Amazon.com paid us sales commissions totaling \$196.53. When you buy something – books or just about anything sold by Amazon, Wild Ones gets a small commission. This commission adds nothing to your price. Just pass through our book store on your way to Amazon: [www.for-wild.org/store/bookstore](http://www.for-wild.org/store/bookstore).