



# Boldre and South Baddesley

Parish profiles

# WELCOME TO WINCHESTER DIOCESE

Thank you for your interest in coming to work in the diocese of Winchester where we are committed to serving people and communities across Hampshire and East Dorset. Our vision is to 'Live the Mission of Jesus' and in doing so we want to make a difference and see lives transformed through the love of God.

We serve a range of diverse communities, from rural to urban, with our Cathedral being sited in the historic city of Winchester. From coastal Bournemouth to Andover, Southampton to the villages around Basingstoke, ministry takes place through our churches, chaplaincies and schools and we are delighted to encourage lay ministry in all its varied forms.

We are committed to being a truly representative diocese and we recognise our need to develop in diversity.

The Diocese of Winchester is an exciting place to be and we look forward to receiving your application.



The Rt Revd Debbie Sellin, Bishop of Southampton and Acting Bishop of Winchester

## LYNDHURST DEANERY



Simon Newham, Area Dean

Lyndhurst deanery has a mix of suburban, market town and village parishes and is located in the south of the diocese, within the archdeaconry of Bournemouth. The life of the deanery includes an active Synod and a friendly and supportive Chapter. We work together to find ways to enable all the people of our parishes to live out their calling in our shared mission and ministry.



# INTRODUCTION

Welcome! In an exciting new chapter for our churches, we are delighted that you are interested in leading us on the next stage of our journey. We hope we can inspire you to come and help us grow in our Christian faith in the coming years.

We are offering a House for Duty post – three days of duty a week, with residency in the vicarage at Boldre, located conveniently for your two churches in Boldre and South Baddesley. You will be supported by our vicar, who is the Vicar of Brockenhurst, and experienced retired clergy, licensed lay ministers and friendly and skilled congregations.

We have been fortunate that Boldre's last house-for-duty priest stayed nine years, alongside a self-supporting minister in South Baddesley. We are thankful that the churches have grown in these years, laying the groundwork for the years to come.

The parishes of Boldre and South Baddesley are in the beautiful New Forest National Park, surrounded by miles of coastline, open heath and ancient forest, with its ponies, cows and donkeys. The area swells with tourists in holiday periods.

The area has its challenges, with some deprivation and people who need to use the nearby food bank; but our church members are active and supportive in the community.

We look forward to meeting you and working with you!

## Contents:

Welcome to Winchester and Lyndhurst	2
The basics	4
Our churches	5
Meet the team	6
Things we share	7
What we value: Boldre	8
What we value: South Baddesley	9
Worship, prayer and study	10
Mission and outreach	11
Role description	12
The vicarage	13
Living here	14
Finances	15
General information	16
Further links	17

... again I will say, Rejoice.  
Philippians 4: 4

# THE BASICS

In legal terms we are a two-parish benefice, centred on St John the Baptist Church in Boldre and St Mary The Virgin Church in South Baddesley, plus, in Pilley, St Nicholas Chapel.



After midnight mass at St John the Baptist

## 2022 statistics

### Occasional offices:

#### Boldre:

Baptisms, 21  
Marriages, 13  
Funerals, 29

#### South Baddesley:

Baptisms, 1  
Marriages, 3  
Funerals, 2

## Our pastoral structure

Vicar of Brockenhurst, Simon Newham, who is also our area dean, has overall care of souls across the three parishes of Brockenhurst, Boldre and South Baddesley.

The parishes have the support of several full-time and part-time clergy, as well as three licensed lay ministers. We also have a children and families worker based in our three schools. No other denominations are in the benefice.

## Civil parish information

The civil parish of Boldre covers the adjoining ecclesiastical parishes of Boldre in the north to South Baddesley on the coast, taking in Pilley village and the hamlet of Norleywood. The civil area is spread over 10,000 acres and has a population of about 2,500.

There are several privately rented and social housing units. Many residents' families have been in the parish for generations, while others are new to the area.

In South Baddesley, some have worked on the Pylewell estate. Both congregations include people from outside the parishes.

## Demographic (2017):

Under 19: 119  
Under 15: 321  
Aged 20-60: 853  
Aged over 60: 667

## Electoral roll:

Boldre: 104  
South Baddesley: 62  
Brockenhurst: 219

## SOUTH BADDESLEY SERVICES

### Sundays: St Mary the Virgin:

**First:** 5.30pm: Group Choral Evensong

**Second:** 9.30am: Family Service

**Third:** 9.30am: Holy Communion (CW)

**Fourth:** 9.30am: Matins (BCP)

**Fifth:** 9.30am: Family Communion

All services followed by refreshments and fellowship

## BOLDRE SERVICES

**Sundays: St John the Baptist:** Every Sunday at 10.30am. Attendance: 70 (avg). Many from outside the parish. Liturgical but lively and professional. Often a children's talk and activity. All services followed by coffee/tea.

**First and third Sundays:** BCP Matins (often with metrical versions of the canticles)

**Second, fourth and fifth Sundays:** Common Worship Eucharist (Order 1, contemporary language)

**Fourth Sunday:** Choral Evensong

**Sundays: St Nicholas' Chapel:** 8.00am BCP Holy Communion. Attendance: 8 to 20

**Weekdays: St Nicholas' Chapel:** Wednesday at 10.30am: Common Worship Eucharist (Order 1) followed by tea, biscuits and conversation. Attendance: 3-10

NOTE: all services are shared among the team

# OUR CHURCHES

*Unless the Lord builds the house,  
those who build it labour in vain.  
Psalm 127:1*

Styles of worship and Christian experience vary. Services in Boldre and South Baddesley are traditional, but with a family approach thanks to local schools. Neighbouring Brockenhurst – part of our group – has the more traditional St Nicholas Church (not to be confused with the chapel), while St Saviour's is more informal.



## **St John the Baptist, Boldre**

St John's is a Grade Two listed building, an ancient church, dating back to 1087. It is in a stunning rural location and a popular wedding venue. One of our members leads regular guided tours.

### **Boldre's prayer and aspiration**

We thank God that our churches continue to play such a prominent role in our village life and that we have a large army of volunteers. We want our new priest to help us to be a Christ-centred, community, to care for each other and bring the Good News to our friends and neighbours.

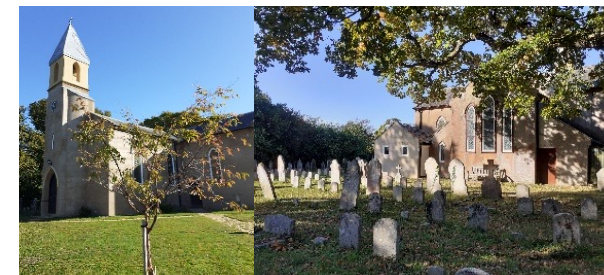


Location of our churches



## **St Nicholas Chapel, Pilley**

The chapel was built in 1964 by the parents of Nicholas Norris, who died in a flying accident. It holds communion services on Sundays and Wednesdays for people from both parishes. It contains the benefice office and is used for PCC and other church meetings.



## **St Mary the Virgin, South Baddesley**

St Mary's is in a beautiful rural setting between the Pylewell Estate and the forest hamlet of Norley Wood, near the coast. The church was rebuilt in its current location in 1818. A booklet on the history of the church is available.

### **South Baddesley's prayer and aspiration**

There is a vibrancy within this church, with a desire to move forward both in our worship and our outreach. Valued highly by its congregation and the community, it affords a rich centre for worship and a vital focus for the spiritual and practical awareness of need in this rural location. Our prayer is for these qualities to be sustained and strengthened.

# MEET THE TEAM

*Serve one another with whatever gift each of you has received  
1 Peter 4: 10*

We take pleasure in our Christian fellowship but also in serving and reaching out to the communities around us. Not only do we have active PCCs but both churches have loyal members with a vast range of skills and expertise.

Sally James is a part-time paid administrator, based in St Nicholas' chapel. (Simon Newham, vicar of Brockenhurst is her line manager.)

Mel Osborne, is our children and families worker and works out of the three primary schools.

Each parish has a social and fundraising team and an annual fete and Boldre also has a stewardship team, a mission group and a fabric committee.

We are looking forward to supporting you in your ministry as you help us move ahead in the next few years.



Simon Newham, Vicar



Mel Osborne, children and families worker



Felicity Boot, assistant priest



Richard Elliott, retired priest

## St Mary's



Pat Mennie, churchwarden



Andy Ward, churchwarden



Rachel Prophet, PCC Secretary



Leo Gibb, organist

## St John's



Sally James, churchwarden and administrator



Chris Knox, churchwarden and licensed lay minister



Geoffrey Breeze, PCC Secretary



Timothy Rice, musical director

# THINGS WE SHARE

*All who believed were together  
and had all things in common  
Acts 2:44*

Many of our church activities and resources are shared between Boldre and South Baddesley.

## **Vicar of Brockenhurst**

As Vicar of Brockenhurst, Simon Newham has oversight of the three parishes.

## **Benefice office**

The benefice administrator is Sally James, who is also a church warden at St John's.

## **Children and families worker**

We recently joined with Brockenhurst to employ Mel Osborne. Her focus is to take church into the local schools, rather than Sunday services, and she is building a team of volunteers from each church. She reports monthly to each PCC.

## **Website**

[www.bsbb.org.uk](http://www.bsbb.org.uk) (Boldre and South Baddesley benefice).

## **Social events**

We hold an annual quiz each autumn in the Memorial Hall with teams from both churches. We also help each other out at our annual fetes.

## **Easter Pilgrimage**

Our Good Friday pilgrimage starts with a service at Brockenhurst. A group of about 20 people then walk a 10-mile route through Boldre, where there is lunch and a service at St John's,

and finally on to St Mary's South Baddesley for tea followed by a Tenebrae service.

## **Music**

Our two monthly choral evensongs with joint four-part choirs are a highlight of our worship calendars each month. Simon, our vicar, often preaches or leads. The choirs combine for other festivals, too.

## ***The Bridge* magazine**

*The Bridge*, compiled by volunteers, aims to draw church and community together and covers the whole of South Baddesley and Boldre. Each month carries a message from Simon our vicar, and until they left, the previous priests of St John's and St Mary's. A new editor will take over this summer. The magazine has huge potential as a tool for outreach and we look forward to working with you on this. Circulation is about 500.

## **Thriving PCCs**

We are proud of the work that our two active PCCs achieve in each parish and the skills we share. Each PCC has about 10 members.

## **Support for Rwanda**

Lyndhurst deanery's overseas mission team has strong links with Rwanda. Boldre's mission group is led by Sally James, a former deputy headteacher of Walhampton school, who regularly visits the diocese of Byumba, where we support three schools and the Hannah Ministry for vulnerable children. St John's also has an annual Africa Sunday service, where Sally updates us on the work we are supporting.



Children at King Salomon Academy, Byumba, Rwanda

# WHAT WE VALUE: BOLDRE

*“I know the plans I have for you,” says the Lord, “plans to prosper you and not to harm you, plans to give you hope and a future.”  
Jeremiah 29: 11*

## **Our vision:**

We value our parish mission action plan, which has guided our approach to ministry in recent years. We look forward to working with you in developing the plan.

Currently, the plan is in four parts:

**Inclusive church** – includes promoting special services, a wish to set up a mother and toddler group

**Family involvement** – includes closer ties with the local CofE primary school, where a seat on the board of governors is reserved for you

**Liturgical and musical excellence** – includes encouraging uplifting public worship and other musical events

**God’s Word** – includes offering educational opportunities on the Bible’s relevance to modern life and a chance to pose questions leading to faith, through preaching, Lent groups and Alpha

## **Music**

Music is an important part of what we value on Sunday mornings. We also organize concerts – classical and contemporary – which raise money for church funds and recently for Ukraine.

## **Children**

Families are made welcome at St John’s and when children are present we have a children’s talk and activity. We are currently building relationships with families through the school and are looking forward to the outcome.

## **Tradition**

We are used to tradition with a modern slant; for example, we use the NRSV version of the Bible for readings and we use a combination of the Book of Common Prayer and Common Worship.



Top: We love coffee outdoors in the summer  
Above: Autumn tidy-up in Boldre churchyard



# WHAT WE VALUE: SOUTH BADDESLEY

*"You are precious in my sight, and honoured, and I love you."  
Isaiah 43:4*

## Our mission

To help everyone in this benefice experience the love of God as expressed in Jesus Christ by giving all who come to the church an unconditional welcome as well as actively addressing the spiritual and social needs of the local and wider community.

St Mary's is well known for its warm welcome to all and is delighted to receive many on holiday in the area.

## Pastoral work

We are looking forward to the new priest being central to the pastoral care offered to the congregation.



An open door awaits

## Our people

We have a small but devoted local congregation drawn from across the parish and neighbouring parishes of Boldre, East Boldre and Lymington.

Recent additions to the congregation include younger families with children who are actively supported by their parents and are supervised during family services by a family supporter who helps them with cards and handiwork relating to the lectionary.



Family involvement

## Our patron

Our neighbour, David, Lord Teynham, is a loyal supporter with his family. Continuing engagement with the Pylewell Estate is an essential part of the parish ministry, with many parishioners either currently working on the estate or having worked there before retiring. The estate hosts the annual parish fete, which has run for more than 150 years. St Mary's liaises with the estate to support its new wedding venue and welcomes qualified couples who wish to marry in this pretty village church. We see this as an important access point to church attendance and would welcome more.



Pylewell House

# WORSHIP, PRAYER AND STUDY

Services in Boldre and South Baddesley are traditional, but with a family approach. We want to maintain our regular Sunday morning services, so we are fortunate to have several retired qualified clergy in both Boldre and South Baddesley.

## BOLDRE

Over the past few years, numbers have risen through a deliberate pitch to those who prefer liturgical worship. Our weekly pew sheet includes Bible readings typed out in full.

Several rotas involve a large number of people from flower arrangers to readers, from cleaners to intercessors.

As well as the feast days of Ash Wednesday, Christmas and Easter, we have other annual services: a commemoration service for 1,415 lives lost on HMS Hood in May 1941; Africa Sunday; Australia Day (Jan); Pet service (Oct).

### Bible study group

Eight people meet every Wednesday in someone's house for study and chat. A second group ran for a time and we plan to re-start this.

### Courses

A Lent course varies from year to year but is broad to attract a wide range of people. Last year Brockenhurst ran an Alpha course on Zoom across all three parishes. Boldre and South Baddesley ran an Alpha course over 20 years ago, which included about 70 people. We would like to run another. Our Bible study group has done "The Bible Course".

## SOUTH BADDESLEY

### Music

Music is led by a pipe organ with a resident organist. We are fortunate to have other available musicians. The choir is currently available at the Choral Evensong service, with numbers augmented by choir members from other churches in the group; this service includes anthems and choir-led canticles. The organist welcomes suggested variations. A choir is also mustered for special occasions and festivals.

### Support

Since the retirement of our last parish priest in June 2022, we have continued a full schedule of services led by a retired vicar in our congregation and others. A team from the congregation is fully involved as lesson readers and intercessors. A much valued and reliable team generously provides and serves refreshments following services.

### Celebrations

The church enjoys celebrating feast days and festivals with over 100 coming to Christmas Eve carols and many to Easter and Christmas services. Palm Sunday is enjoyed by many with the support of a New Forest donkey of course.

*O taste and see that the Lord is good!  
Psalm 34:8*



Top: Palm Sunday at St Mary's.

Above: Remembrance Sunday is a big occasion at St John's, partly because of a number of WW2 Canadian soldiers buried at the church.

# MISSION AND OUTREACH

## BOLDRE

### Mission and Ministry

The church aims to serve all the community, especially as expressed in its approach to baptisms, weddings and funerals, used as opportunities for mission and evangelism. Several individuals and families are now regular attenders thanks to this approach. For many years, we have held a special “married at Boldre” service – about 25 people were blessed last year (see picture below).

### Pastoral work

A pastoral team is currently being set up by one of the congregation.

### Community

William Gilpin CoE school uses the building and St Nicholas’ chapel for occasional services.

We run social and fund-raising events at Boldre War Memorial Hall including the Boldre Church and

Village fete (£9,500 profit in 2022) and other events. Our annual harvest supper attracts around 70 people.

Regular concerts and other events at St John’s bring up to 200 people into the church.

### Education

You could have an ex-officio position on the governing board of William Gilpin CofE primary school, with a headmaster supportive of the church. Two special schools, Hill House and Southlands fall within the parish as well as the private Walhampton preparatory school, where the stewardship committee recently held a ‘thank you’ reception for about 200 church members.

### Recorded service

During the pandemic, we began to pre-record our morning service. We still have 40 regular listeners every week.

*We are ambassadors for Christ, since God is making his appeal through us  
2 Corinthians 5:20*

## SOUTH BADDESLEY

### Education

The church school has a ‘Good’ Ofsted rating. It attracts families to the area and we strive to maintain close contact. Children and families are encouraged to join in services and events, attending Harvest Festival, Blessing the Crib and Christingle.

### Outreach

Christmas Eve has become traditionally an event for the church and neighborhood (148 adults this year and too many children to count). The church is open every day and walkers in the area frequently enjoy access for rest and quiet.

An active form of outreach is the annual fete in the fabulous grounds of Pylewell Park (see picture below) by kind permission of Lord Teynham. This attracts people from far and wide and is a good opportunity for us to spread the Word as well as to have fun and publicise the church.



The ‘Married at Boldre’ service in 2022



St Mary’s fete at Pylewell Park

“... this is the one to whom I will look, to the humble and contrite in spirit, who trembles at my word.”  
Isaiah 66:2

## ROLE DESCRIPTION

We recognise that our new incumbent will want to review the current situation and may have different priorities from those outlined in this profile. We know that God will take us forward in new ways, building on what has gone before, with whoever He brings to us.

With this in mind, we are praying for a person with the following *essential* attributes; someone who...

### **Spirituality**

... is a prayerful, thoughtful follower of Jesus who models their life on Him

### **Worship and preaching**

... values traditional liturgy and musical excellence in a variety of forms.

### **Discipleship, learning and nurture**

... loves the Bible, is confident of its authority and is a discerning and creative teacher and preacher, who can nurture others in applying Bible teaching to everyday life

### **Leadership, collaboration and parish organization**

... can show relevant experience in the role's areas of responsibility, including being a good delegator, and who has the ability to inspire, empower, support and motivate people of all ages and backgrounds.

### **Pastoral care**

... has supportive pastoral skills and a warm heart for people from two to 92

### **Evangelism and social engagement**

... is a persuasive yet sensitive evangelist, who can help the church mature spiritually and grow numbers through outreach into the community

We also see the following traits as *highly desirable*; someone who...

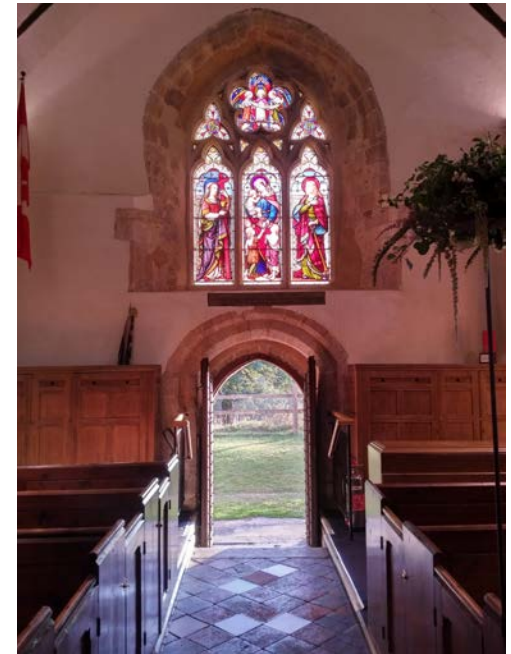
... is a person of wisdom and discernment, who will help us review where we are now and where we should be going

... is a loving, sociable and enthusiastic leader with a sense of humour

... is approachable and able to demonstrate skills of training, pastoring and mentoring to release more lay people into ministry

... is creative and enjoys music and the arts

*Role Description: This should be read and understood in conjunction with the profile document for the benefice and the [Guidelines for the Professional Conduct of the Clergy](#) which apply to all in ordained office.*



Faith, Hope and Charity in St John's West Window

# THE VICARAGE

You will be living in a stunning village location in Boldre, on Pilley Hill, close to village, school, War Memorial Hall and community-run shop

The vicarage is secluded and set 100 metres back from the road in a lovely garden. It is a spacious four-bedroomed house, currently being updated and decorated, and ideal for visiting family. It has a total floor area of about 2188 sq ft (203.3 sq m).

The house has:

- a large 19ft x 14ft office/study
- a 21ft x 12ft triple-aspect living room
- four bedrooms, a bathroom and a shower room
- pantry, utility and 14ft x 12ft dining room, all leading off the kitchen
- a garage plus plenty of external space for cars, and a secluded rear garden, with area for vegetables.



A house sign denotes the Vicarage on Pilley Hill

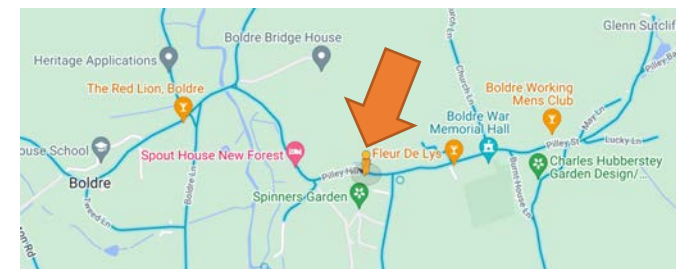
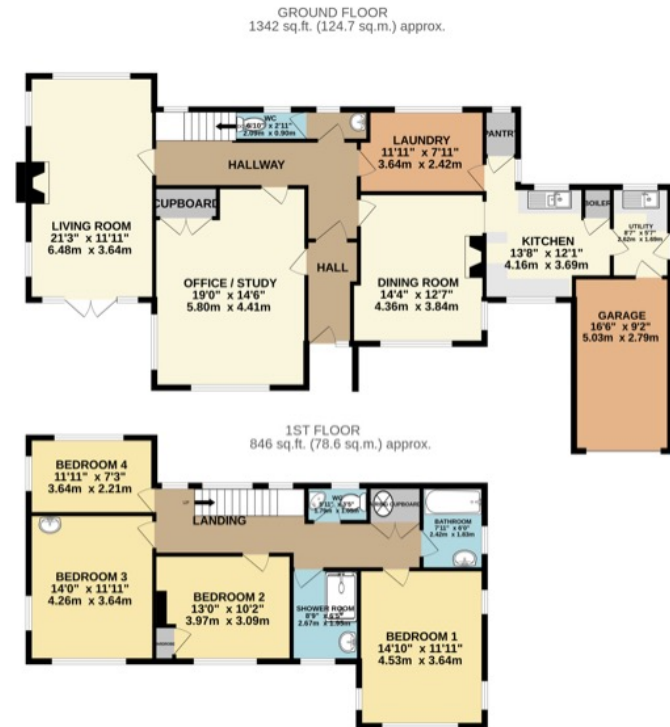


Front view of the house



View of the house from the rear garden

*How lovely is your dwelling place,  
O Lord of hosts!  
Psalm 84:1*



Location of the Vicarage and its surroundings

# LIVING HERE

The New Forest regularly appears among the best places to live in the UK

In the New Forest National Park, you will live near the thriving coastal market town and sailing hub of Lymington – just a five-minute drive away. The town has plenty of high street shops, pubs and cafes, a large Waitrose, smaller supermarkets and two petrol stations.

Southampton and Winchester are within easy reach to the north and beaches to the south.

Your corner shop is a brand new community-run Post Office and shop in Pilley next to Boldre War Memorial Hall, which serves everything from canned food to a good cup of coffee. At the other end of the village is The Red Lion, an award-winning traditional pub, and in the centre is the newly re-opened Fleur de Lys, reportedly the oldest pub in the New Forest.

## Rest and recreation

Opportunities are numerous, including walking in the New Forest, riding, sailing and cycling.

## Connections

Brockenhurst has a fast mainline railway station with direct trains to Southampton and

Bournemouth, with their international airports, London Waterloo (90 mins) and the north. Tourism and small business provide most local employment, while many people commute from Brockenhurst. A bus runs through Pilley twice a week to Lymington.

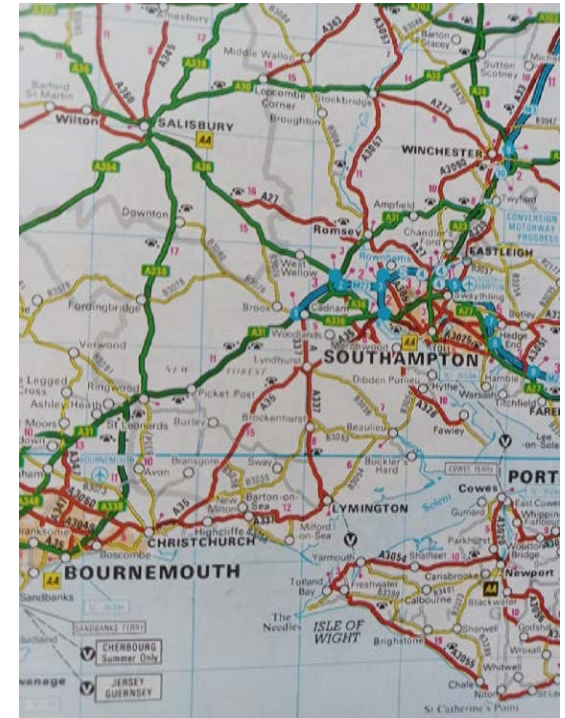
## Schools

The well-respected schools in the area include Boldre's CofE primary, William Gilpin, and South Baddesley CofE primary, both rated 'Good' by Ofsted. At secondary level young people go to the highly rated state schools, Priestlands or Arnewood or private schools, including Walhampton prep school and Ballard (to year 11). Brockenhurst College offers A'levels and more.

## Health services

Lymington and Brockenhurst have NHS surgeries as well as pharmacies, opticians and dental practices. There is well resourced hospital at Lymington, which includes a minor injuries unit, while the nearest main hospital is in Southampton. There are several care homes nearby.

*I came that they may have life, and have it abundantly*  
John 10: 10



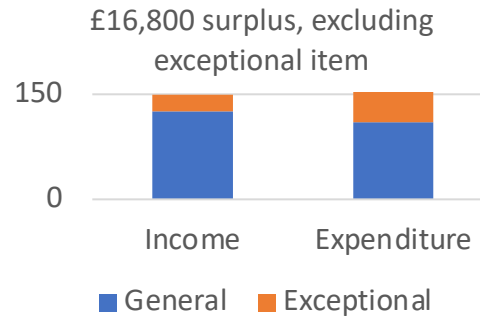
# FINANCES

*Do not neglect to do good and to share what you have, for such sacrifices are pleasing to God Hebrews 13:16*

## BOLDRE

Total income received by St John's in 2022 was £149,584 and total expenditure was £156,004. This included £46,500 exceptional expenditure related to work on the church tower, offset by £23,250 exceptional income from the Boldre Church Trust, which has helped us in the past. The Common Mission Fund payment in 2022 was £45,130, in line with the amount requested by the Diocese of Winchester. For full accounts please see our website ([www.bsbb.org.uk](http://www.bsbb.org.uk)).

We have a Goodbox contactless point, a stewardship committee has raised giving through the parish giving scheme and the social and fundraising committee raised £12,000 in 2022.



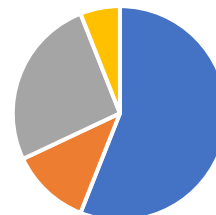
The raffle stall at St John's Christmas market

## SOUTH BADDESLEY

The church is in a good financial position because of healthy deposit accounts. There was a modest surplus in 2022. Income was £34,013, expenditure was £32,425. Fortunately, there is widespread support for the church from outside the congregation, demonstrated by the response to a fund-raising appeal to raise £180,000 to allow much-needed external and internal repairs in 2018. We have recently installed a completely new under-pew heating system, fully financed by the Ken Allen Trust.

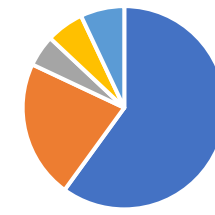
A dedicated social and fundraising committee works hard to supplement funds and has held various events, but the highlight, with a profit of nearly £6,000, is the annual St Mary's Church summer fete.

South Baddesley 2022 income  
£34,013



- Giving
- Fundraising
- Gift Aid
- Wedding/Funeral fees

South Baddesley 2022 expenditure  
£32,435



- Parish Share
- Church running costs
- Donations
- Churchyard
- Insurance

# GENERAL INFORMATION

*The house was built with stone finished at the quarry, so that neither hammer nor axe nor any tool of iron was heard in the temple while it was being built.  
1 Kings 6:7*



The Ellacombe chimes at St John's



North Transept window at St Mary's

	<b>St John's Church, Boldre;</b>	<b>St Mary's Church, South Baddesley</b>	<b>St Nicholas Chapel, Pilley</b>
Originally founded	1087	1818	1964
Capacity	250	150	70
Church bells	8 (Ellacombe, pictured)	1	1
Organ	1969 electronic 3-manual by Coleman Hart, altered in 2010 to sound like the Willis organ at Hereford Cathedral.	Bryceson organ	Two-manual Viscount organ installed in 2018
Heating system	Under-pew electrical	New under-pew heating	Electrical
AV capabilities	Static and lapel microphones	Audio only	n/a
Date of last quinquennial report	January 2021	2020	January 2021
National Heritage listing	Grade 2*	Not listed	Not listed
Church state of repair	Good	Good; internal redecoration in 2018 and external part refurbishment in 2018	Good
Current works	Just installed new under-pew heating; implanting recommendations of last quinquennial review	None	No
Responsibility for buildings upkeep	Fabric committee. Boldre Church Trust contributes to significant fabric needs	Churchwarden and PCC. Ken Allen Trust recently paid 100% heating renewal	St John's fabric committee. Boldre Church Trust contributes to significant fabric needs
General church finances	Good	Good	Good
Parish share	Negotiated, then paid in full	Predominantly paid in full without negotiation	As St John's
Churchyard available for burials	Yes	A graveyard adjacent to the church has a recent extension (courtesy of the Pylewell Estate) to meet requirements for many years. A strict policy is maintained regarding eligibility for burial in the churchyard.	No churchyard
Churchyard maintenance responsibility	David Ridout	Churchwarden and paid contractor, paid by Kitcher Investment Fund	Paid contractor
Electoral roll (2022)	104	62	n/a
Streaming numbers	No streaming – pre-recorded service sent out by email on Saturday (40 views on average)	Only during lockdown	None
Other premises in use by church	Boldre Memorial Hall (for a fee)	School hall	As St John's



# FURTHER LINKS

Please click on the links below for further information about our parish, our churches and the wider area.

## NEW FOREST

New Forest Basics Bank:  
<https://www.basicsbank.org.uk>

New Forest National Park:  
[www.newforestnpa.gov.uk](http://www.newforestnpa.gov.uk)

Street Pastors:  
<https://streetpastors.org/locations/southampton/>

Lymington: [www.lymington.com](http://www.lymington.com)

Boldre Parish Council: <https://boldre.org.uk>

## DIOCESE AND DEANERY

Diocesan support:  
[www.winchester.anglican.org/parish-support](http://www.winchester.anglican.org/parish-support)

Deanery mission action:  
[Lyndhurst deanery mission](#) (2011)

Rwanda: [Deanery's most recent appeal](#) (2021)

## BROCKENHURST

St Saviour's and St Nicholas Churches,  
Brockenhurst:  
[www.brockenhurstchurch.com/](http://www.brockenhurstchurch.com/)

Brockenhurst College: [www.brock.ac.uk](http://www.brock.ac.uk)

## BOLDRE

St John the Baptist, Boldre:  
[www.bsbb.org.uk/st-johns/](http://www.bsbb.org.uk/st-johns/)

[Windows](#) at St John's

St John's [Annual Report](#) (2021)

William Gilpin Church of England Primary  
School: [www.williamgilpin.hants.sch.uk](http://www.williamgilpin.hants.sch.uk)

[Boldre Church Trust](#)

## SOUTH BADDESLEY

St Mary the Virgin, South Baddesley:  
[www.bsbb.org.uk/st-marys/](http://www.bsbb.org.uk/st-marys/)

St Mary's [financial and other reports](#)

South Baddesley Church of England Primary  
School: [www.southbaddesley.hants.sch.uk](http://www.southbaddesley.hants.sch.uk)

Pylewell Park: [www.pylewellpark.com](http://www.pylewellpark.com)

### Acknowledgements:

\*Scripture quotations are from New Revised Standard Version Bible: Anglicised Edition, copyright ©1989, 1995 National Council of the Churches of Christ in the United States of America. Used by permission. All rights reserved worldwide.

Most photographs supplied by church members. Special credits:  
Page 4: St John's at night by Rob Humphreys. Page 9: Pylewell House by Sam - New Forest Studio Page 13: Steetview.



Foodbank in Rwanda, during Covid-19

THANK YOU

We look forward to meeting you soon