

CELEBRATING OUR LEGACY



POWER OF PHILANTHROPY
Annual Report 2019-2020



The Foundation supports, strengthens and sustains West Liberty University through fundraising, investment and stewardship of private funds.

VISION STATEMENT:

The WLU Foundation will build donor trust through ethical practices and communication while honoring philanthropic intentions that advance West Liberty University.

CORE VALUES:

Integrity, Transparency, Accountability, Donor Centric, Stewardship, Professionalism, Collaboration, Ethical Standards



DEAR VALUED DONORS:

When I reflect on fiscal year 2020, I am overwhelmed. By mid-March, our country shut down and WLU came to the difficult decision not to bring students back to campus after Spring Break. The University's Board of Governors also had to halt a Presidential Search and ask President Stephen Greiner to stay during one of the most challenging times in history. Thankfully, he agreed to guide us through these unprecedented times.

The WLU Foundation staff worked remotely and attempted to keep the momentum of what began as a very strong fiscal year going, but we had to cancel fundraising events and postpone meetings. We started "zooming" daily and watched in fear and concern as the pandemic began to change life as we knew it. The investment

market fluctuated back and forth, and we, along with many other non-profit and small businesses, turned to the government for Paycheck Protection Program (PPP) loans.

Our entire nation and the world endured loss in different capacities, loss of jobs, loved-ones, social engagement, daily routine, and more. On a personal note, I also had my third son and lost my father.

With all these challenges, the WLU Foundation still ended fiscal year 2020 in a strong financial position and, what is even more promising, we were encouraged by your continued care, concern, and support of WLU students. This is best exhibited by the outpouring of donations toward our Helping Hilltoppers Campaign, which we began in May of 2020 to help students in additional financial need due to the COVID-19 Pandemic. To this date, we have already raised more than \$70,000 and helped more than 210 students.

Although these past seven months have been hard for all of us, I am encouraged by you, our loyal donors, and I look to a promising future. Our WLU Foundation team is poised to come out of this time with strength and determination.

Our Board of Directors continues to be supportive and visionary. We are also excited to get to know and work with our new **President, Dr. W. Franklin Evans**. At the end of the day, we all remain focused on fulfilling the beautiful intentions of you, our donors, to help our students and our institution.

Thank you for your commitment to WLU!

In gratitude,

A handwritten signature in blue ink, appearing to read "Angela".

Angela Zambito Hill
Executive Director

WLU FOUNDATION STAFF

The Foundation is pleased to welcome Alexis Montes to the team and congratulate Nick Musgrave on his promotion.



**GINNI MCFARLAND
FINDLEY**
Finance Administrator



ALEXIS MONTES
*Assistant Director of
Alumni Giving*



NICK MUSGRAVE
*Assistant Director of
Development*

WLU FOUNDATION BOARD OF DIRECTORS

The Foundation is fortunate to have a dedicated Board. Thank you all for your service!



DAVID R. CROFT
Chairman

E. Marc Abraham
Marty Adams
Anissa Anderson
Charles Annett
Bruce Berlage
Donna Berlage
Jason Blair
John Bonassi
Clyde Campbell
David Coffaro
David Croft, Chair
John Dolan, Vice Chair
Russell Dunkin, Treasurer

Linda Edwards
James Frum
Diane Gongaware
Daniel Joseph, Secretary
Henry Marockie
John McCullough
Donald Nickerson
E. Alex Paris
Cindy Stickley
Samuel Stone
Thomas Tuttle
Beth Weaver
Jeremy West

Honorary Board Members

R. Emmett Boyle
Ron Hobbs
Fred Horne
Robert Joseph
Bob Kota
R. Clark Morton+
Andrew Pasden, Jr.
Peter Sontag
Richard Stevenson
Gary West
Randy Worls

+Deceased



MACEO CHRISTMAS
Junior, Sports Management & Marketing
"Thank you for this scholarship opportunity!"



MACKENZIE RINE
Junior, Healthcare Management
"I am very grateful to have received this scholarship!"



KAILEY MORGAN
Senior, Healthcare Management
"Thank you for the opportunity of this scholarship!"



SARAH PHILLIPS
Senior, Marketing
"Thank you so much for this scholarship!"



SYDNEY BRIDGES
Senior, Healthcare Management
"Thank you so very much for this scholarship!"

DONOR SPOTLIGHT

DIANE BILLHAM GONGAWARE

Diane Billham Gongaware established a scholarship in August of 2020 to help business students. A native of Weirton, W.Va., she looks back fondly on her years as a student at West Liberty State College. Graduating in 1978, she earned a Bachelor of Science in Business Administration and later earned an MBA from the University of Pittsburgh. She then became a leader across the communications technology sector, with \$2B+ sales and marketing teams in Fortune 500 companies such as Cisco and Verizon.

Her experience spans all market segments across commercial, state and local government, enterprise-wide large business and service providers. She has been a principal, president and general manager of several successful venture-backed, innovative, start-up companies. Currently residing in Northern Virginia with her husband Dick, she helps her alma mater in more ways than one, and recently joined the WLU Foundation as a member of its Board of Directors.

Q & A with Diane Billham Gongaware

Q. What inspired you to establish your business scholarship?

A. My husband and I established a planned gift to WLU years ago. As we started to look toward retirement we asked ourselves, “What are we waiting for? What if we could preserve our estate plans and help WLU students today?”

You see, I received a great education at WLU and I want others to benefit now while we can see the effect. We want to feel a part of the university again.

Then late last year, we had a chance to attend a reunion in our area and hear campus news, strategies and successes from President Stephen Greiner and the WLU Foundation staff. We found continued growth in the financial strength and endowment impressive and we had a great time getting reacquainted with leaders at the school—we even watched a televised WLU basketball game. We approached Angie Hill there and set-up time to discuss what we were thinking. She told us of options which could make an immediate impact.

As the pandemic developed and created greater economic challenges, we knew that families were struggling more than ever to afford higher education. Working with Angie, it all came together and we were happy to move forward.

Q. What experience as a West Liberty student served you well in your career?

A. First was the quality of the education. My WLU degree is in Business Administration and when you understand basic principles of business, you can succeed in any number of roles. The business degree started my career in banking and finance, then I gravitated to sales, marketing and general management. The size of WLU’s classes supported individual attention and class discussion and made me feel like I mattered. Business instructors were great (Dr. Hamilton who is deceased and Dr. John McCullough are just two examples) and they cared about students. This solid business foundation made me well-armed to compete.

The second thing was the personal experience. The size of the school fit me well, large enough but not so big to feel lost. I was a fairly quiet person by nature and felt at home in the class size and social situations. The beautiful hilltop setting allowed us to enjoy learning and also get out in nature. And the friendships formed have endured.

Q. What are WLU’s strengths?

A. The size of the university is a strength, large enough to offer a variety of degree options but not so large as to overwhelm a student. Faculty and staff care about students as individuals.

Also, the school itself is situated on such a pretty campus. I loved being outside in the quad just hanging out with folks between classes. Larger metropolitan activities are available in Wheeling and Pittsburgh on the weekends if you want to get off-campus.

Q. What advice can you offer to students pursuing a degree and a career in business?

A. First, do well so you are confident in your abilities. Nothing succeeds like confidence. Take advantage of the opportunity to get to know your instructors, learn from their business experiences and network beyond the textbook learning. Make the most of on-campus guest speakers or networking opportunities because it’s a small world, navigated through people and relationships.

Ask business leaders for ‘informational interviews,’ 30-45 minutes to talk with them about their jobs, what they like and what they don’t, and get real-world context and advice. Business leaders love to talk with business students.

Research industries and companies to consider which ones excite you, then reach out to find internships. Spend time with alumni to get engaged with graduates who can help connect you to jobs. Use social media to responsibly share who you are and blog about your thoughts and ideas on career. I recently watched a video posted by WLU done by a student who is pursuing his degree in cyber-security. That short clip is a great introduction that could accompany an application for an internship or interview.

Q. Do you have a fond memory of West Liberty to share?

A. My fondest memories are of the people and the friendships. The fall Homecoming parades and Serenades were fun times spent building floats and doing evening performances across campus. Spring Greek Week athletic events were a blast; we proudly won the human pyramid competition three years in a row! Faculty occasionally had coffee house evenings at their homes where we could meet as small groups and hear a speaker or discuss a hot issue. And sitting on the quad on a beautiful fall day, talking with good friends, was the best of all.

STATEMENT OF FINANCIAL POSITION

JULY 1, 2019 - JUNE 30, 2020

	TOTAL IN THOUSANDS	
ASSETS	2020	2019
Cash and cash equivalents	158,136	171,799
Unconditional promises to give	181,923	837,319
Other receivables	7,555	7,555
Investments at estimated fair value	18,205,544	16,751,476
Beneficial interest in perpetual trust	2,265,516	2,285,806
Other assets	53,826	47,668
TOTAL ASSETS	20,872,500	20,101,623
LIABILITIES AND NET ASSETS		
LIABILITIES		
Accounts payable and accrued expenses	-	8,880
Liability for charitable gift annuities	13,640	15,555
Paycheck Protection Program loan	39,300	
Total liabilities	52,940	24,435
NET ASSETS		
Without Donor Restrictions	1,535,806	1,527,445
With Donor Restrictions	19,283,754	18,549,743
Total net assets	20,819,560	20,077,188
TOTAL LIABILITIES AND NET ASSETS	20,872,500	20,101,623

KEY MEASUREMENTS AND CALCULATIONS:	RESULT
Total Foundation Expenditures stated as a % of Total Assets under Management	1.3%
Ratio of Total Contribution to Total Foundation Expenditures	5.7 to 1
Ratio of Total Contributions to Total University Support Expenditures	.84 to 1

STATEMENT OF ACTIVITIES

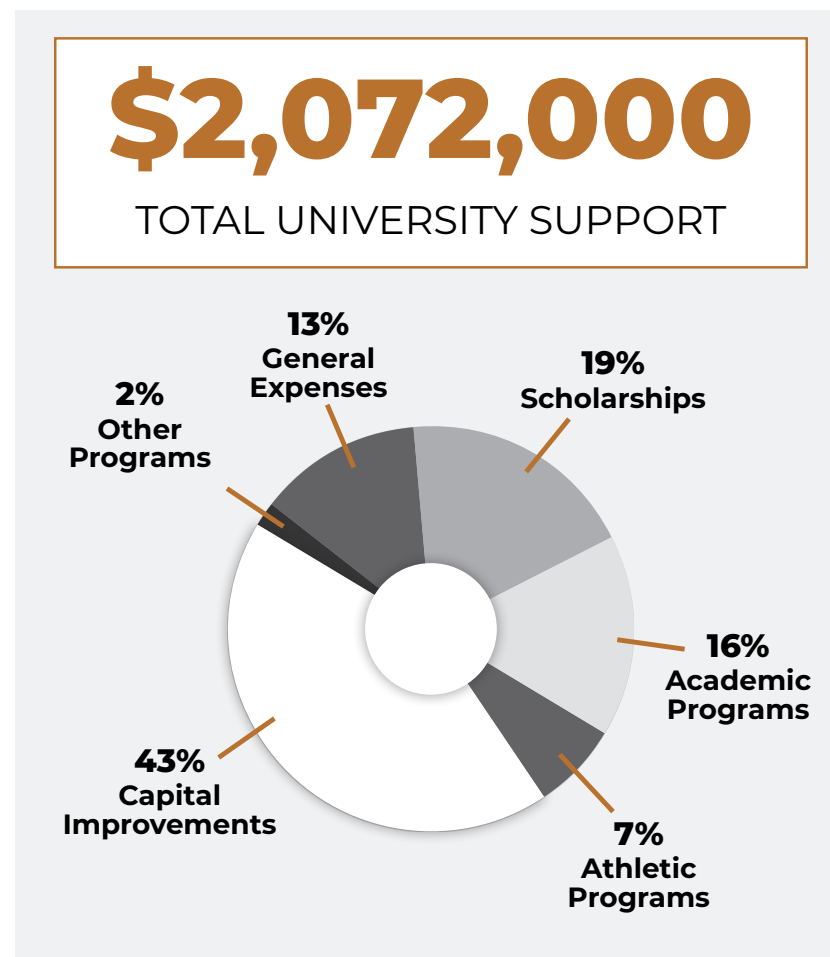
JULY 1, 2019 - JUNE 30, 2020

	TOTAL IN THOUSANDS	
SUPPORT AND REVENUES	2020	2019
Contributions	1,522	2,009
Investment Income	1,190	1,185
Special Events	-	94
Change in value of split interest agreements	(20)	34
Other income	123	92
TOTAL SUPPORT AND REVENUES	2,815	3,414
EXPENSES AND LOSSES		
West Liberty University support:		
Scholarships	399	427
Athletic programs	140	192
Academic programs	334	393
Capital improvements	890	624
Other programs	35	32
Fundraising	5	6
Costs of direct benefits to donors	1	58
General and administrative	268	261
TOTAL EXPENSES AND LOSSES	2,072	1,993
CHANGES IN NET ASSETS	743	1,421
NET ASSETS AT BEGINNING OF YEAR	20,077	18,656
NET ASSETS AT END OF YEAR	20,820	20,077
RETURN ON AVERAGE NET ASSETS EMPLOYED DURING FISCAL YEAR END JUNE 30, 2020	6.2%	7.0%
AVERAGE NET ASSETS	20,487	19,444

2020 UNIVERSITY **SUPPORT & EXPENDITURES**

JULY 1, 2019 - JUNE 30, 2020

UNIVERSITY SUPPORT	TOTAL IN THOUSANDS	PERCENT OF TOTAL
SCHOLARSHIPS - based upon a total of FY20 annual cost of 18,061 for tuition, room & board for an in-state student, this amount provided the equivalent of 22 full scholarships.	399	19%
ACADEMIC PROGRAMS - Nearby Nature Project, classroom equipment, Fluency Project, Tri-State Tax Institute, College Community Choir, Appalachian Biodiversity Research, teacher mentors, etc.	334	16%
ATHLETIC PROGRAMS - Expenditures for Hilltopper Athletic Club, recruiting expenses, team travel expenses for tournaments, practice uniforms, equipment, etc.	140	7%
CAPITAL IMPROVEMENTS - Belmont Savings Bank Indoor Practice Facility, Wrestling Locker Room renovation, Wrestling Room renovation, Baseball Field Improvements, Football pressbox upgrades, Russek Field replacement	890	43%
OTHER PROGRAMS - Book of Hours conservation and Discovery series library expenses, alumni activities, community support, etc.	35	2%
FOUNDATION EXPENSE		
GENERAL AND ADMINISTRATIVE EXPENSE - Includes salary and benefits, rent, operating expense, travel, etc.	268	13%
FUNDRAISING	6	0%
TOTAL UNIVERSITY SUPPORT	2,072	100%
GRAND TOTAL SUPPORT AND EXPENDITURES	2,072	100%



To view the audited Financial Statements, Notes and Certified Public Accountants Opinion, please go to wlufoundation.org.

SUPPORTING STUDENT-ATHLETES

PANHANDLE PERFORMANCE ZONE



Contributed by Don Clegg, Sports Information Director

The completion date for the massive expansion and renovation of the West Liberty University weight room is rapidly approaching so it won't be long until hundreds of Hilltopper student-athletes will be entering the "Panhandle Performance Zone."

"With nearly 500 student-athletes on campus – a 25 percent increase in just the last four years – we needed a bigger, more modern facility to better support their growth and development," Athletic Director Lynn Ullom said. "With the expanded training area and across the board enhancements and branding, this will be an absolute game-changer for every one of our 20 intercollegiate sports."

The Panhandle Performance Zone will be merely the latest in a series of athletic facility upgrades – West Family Stadium, Belmont Savings Bank Practice Facility, West Family Athletic Complex, etc. – all driven by generous support from a number of private donors.

West Liberty Strength and Conditioning Coordinator Dan Hopkins played a major role in planning and development for the project. When completed, the new facility will feature a significantly larger footprint along with new HVAC and lighting systems as well as new flooring and new equipment under a unified branding concept.

After the decision was made to go forward, a \$500,000 budget was established. Leadership gifts from Gary E. West ('58) and Herman "Bucky" Kopf ('64) provided the opportunity to ask Panhandle Cleaning and Restoration, WLU's longstanding partner in academics and athletics, to help complete the job.

"Once the executive team at Panhandle – Vice President Bob Contraguero Jr. and Vice President of Marketing Josh Contraguero – realized the impact this project would have on our students, they said the decision to participate was a no-brainer," West Liberty Vice President for External Affairs Jason Koezler said.

"They stepped up to the plate and offered their construction services as an in-kind donation. Thus, a recognition opportunity was offered and agreed upon as the 'Panhandle Performance Zone.' These community partnerships are one of the main reasons West Liberty is recognized throughout the region as a university on the rise," Koezler added. "We are very grateful for their continued support."



Wisdom Jenkins
Business Marketing Major
Senior Wide Receiver

"The Panhandle Performance Zone is going to help us out tremendously. It's already helped us with recruiting and I can't wait to start doing workouts with the team in there. Our old weight room was smaller and we had to condition in smaller groups; now we can maximize our space, get more people in there, and put in more work. I can't thank Gary West, Bucky Kopf, and the guys at Panhandle Cleaning and Restoration enough."

Thank you to donors Gary '58 and Flip West for updating Russek Field with brand new turf and for all you continue to do for WLU.



1962 WLSC Football team. Highlighted: David Waples '63 (#86), Russ Opipery '63 (#65) and Dave Forgash '66 (#11).

NAMING RECOGNITIONS HONOR ALUMNI

The Hilltopper Football Team will now suit up in the Opipery/Forgash Locker Room. The naming of the facility occurred in tandem with the establishment of the David L. Waples Football Endowment through a generous gift from David Waples '63, who wanted to honor his teammates Russ Opipery '63 and Dave Forgash '66.

Opipery played line positions on both offense and defense for the Hilltoppers and competed on the track and field team as a thrower. Following graduation, he coached high school football and worked in outside sales.

Forgash was a top defensive back at WLU and contributed towards their 1963 WVIAC Football Championship. He also served as catcher for the 1964 NAIA National Championship baseball team. He spent his career in the pharmaceutical and natural gas industries, before retiring in 2014.

"This example of selfless charitable giving in honor of friends is inspiring. Dave had this vision to honor these worthy alumni and assist future student-athletes. We are all grateful to him," said Angie Zambito Hill, executive director of the WLU Foundation.

If you are interested in a special recognition opportunity on the WLU campus, please contact us at (304) 336-5635.



WLU WRESTLING CLIMBS THE HILL TO SUCCESS

Now in the sixth and final year of a Capital Improvement Plan, the Hilltopper Wrestling facility enhancements are nearing conclusion. These facilities are a key part of the program's vision of providing a first-class experience for its student-athletes.

The campaign has raised over \$140,000 since spring of 2019 and has put it to good use. The wrestling room has been entirely renovated including additional mats, signage honoring past national qualifiers and record holders, and a new sound system. The locker room was also redone with new lockers for each wrestler, a lounge area, and fresh carpet and paint. The final touches will be a Hall of Fame connecting the wrestling room with the locker room and office areas, honoring donors and all-time Hilltopper Wrestling greats.

Not to be outdone by the physical improvements, the team is also steadily advancing towards becoming a top-tier program.

"We were ranked in the top ten nationally for much of last season, and five of our guys were individually ranked," WLU Wrestling Head Coach Danny Irwin said. "We also secured a runner-up finish at the MEC Conference Championships, and next year we're aiming for the top spot."

The program, both in fundraising and in competition, has adopted the mantra of "Climb the Hill."

"Coach Irwin brought that phrase with him," said junior Chase Morgan. "It's central to everything we do; we're always trying to improve and climb towards being a nationally known, and feared, team."

According to Morgan, the facility improvements have played a large role in recruiting great wrestlers and developing them to become even better. Over his three years on the Hilltop he has seen how the facilities, mantras and expectations come together to create a culture of success.

"One of our favorite sayings is that successful people are never not busy," Morgan said. "We're always working, whether it's in the gym, the wrestling room or out fundraising. I'm grateful to our donors and supporters who have noticed our hard work and bought in."

The Climb the Hill Campaign concludes at the end of December 2020. Donors who have given \$1,000 or more to the Wrestling program since April 2015 will be honored in the new Hall of Fame. Call the WLU Foundation at 304.336.5635 to ensure your name will be listed or to make your gift.



STUDENT ATHLETE SPOTLIGHT

Wrestling

Q&A WITH RECIPIENT CHASE MORGAN

Q. What do you like most about the Hilltopper Wrestling program?

“The culture here is phenomenal. Our team and coaching staff are all dedicated to excellence, and it’s all helped me grow as a person as well as a wrestler.”

Q. How have you been impacted by the Wrestling facility improvements?

“It’s been night and day. The entire wrestling room has been basically redone and the updated record boards are a big inspiration; we have a great history and great alumni to look up to. It all makes our program look better.”

Q. These improvements have been made possible through the generosity of donors, what does that mean to you?

“Everyone who has supported us makes me want to do better myself, to wrestle that much harder. They’re giving to us and I want to give back by being successful.”

Q. Do you have any hobbies other than wrestling?

“I used to focus on working out, but quarantine provided me with more free time to try new things. I got into gardening and we made a little garden outside of my house. I really enjoyed growing and eating my own food!”

CHASE MORGAN

Hometown: Ripley, West Virginia

Year: Junior

Major: Exercise Physiology

Weight Class: 165

Career Goal: Earn a master’s degree in exercise physiology and eventually work towards advanced training as a Physical Therapist or Physician Assistant.

NATHAN SHOTWELL SOCIETY

The Nathan Shotwell Planned Giving Society, established in 1997, recognizes and honors those who have made provisions for the West Liberty University Foundation through a bequest in a will or other estate-planning arrangement. The Society is named for the Reverend Dr. Nathan Shotwell, who founded West Liberty University in 1837 and served as its leader until 1854. Dr. Shotwell is credited with the establishment of the high academic standards to which the university continues to aspire.

Robert K. Abel '73	Joseph E. Davis '61	Kenneth Harris '37 +	Virginia T. Mellott '43	Ruth Ann Scherich '51
Jack C. Adams '63	Alfred R. de Jaager	Constance H. Hein '81	Stella Caravas Misoyianis '52 +	Sara H. Schnitzler '49 +
Mary K. Ahrens +	G. Richard Deenis '89	Harry R. Hein	A. J. Monseau '03	Howard L. Shackelford '73
Judith Schryver Azallion '99	Leslie DeFelice '76 & Connie Nelson	Howard Herrington '66 +	Jenny Lynn Morlan '81 +	Shyrl J. Shepard '55
Bruce L. & Donna Waugh '65	Roger L. DuBois '53	Helen Gibson Herzler +	R. Clark Morton '53 +	Scott R. Shipman '97
Berlage	Helen P. Elbin +	Ralph E. Herzler, Jr. +	Betty J Muhleman +	Peter M. Sontag '69
Patricial L. Bethel '79	Paul N. Elbin +	John William Hoppers '63	Christine C. Muroski	Lawrence A. Spalla '70
Mildred Kaetzel Biggs +	Shirley L. Emerick '74	Charlie L. & Deborah V. Hughes	Theresa Nagy '68 +	Rebecca B. Stevenson
Albert M. Blatnik '49 +	Carlyle Farnsworth +	David Jones '60 +	Florence Irene Nesbitt +	Richard G. Stevenson
Thais F. Blatnik '76	Robert Richmond Fisher	David B. Kadar '74	Kathryn T. Neuman +	Samuel W. Stewart '03
Marjorie Louise Blodgett '22 +	Carol L. Flaherty '66	Miriam E. Kaiser '29 +	Mary Jane Norona '49 +	Cynthia L. Stickley
Elizabeth M. Boger '43 +	Dennis K. Flaherty '67	Billy E. Keller '70	Diana Duncan Ott '60 +	Blanche Barte Stidd
Mark Bohlman '75	Richard A. Foston '97	James "Jay" Kilbane '88	Andrew Paesani, Jr. '54	Lawerence H. Talley +
R. Emmett Boyle & Debra J. Boger	Susan M. Fowler '73	Bob '67 & Patti Kota	Judith Bartell Paesani '55	Christopher Taylor '07
William A. Brenner	Sara Jane Fritz '43 +	Rachel Katherine Krinke '45 +	Andrew J. Pasden '69	Carol Kirsch Terry '74
Donald '52 & MaryAnne Bruno	Rosemary M. Front +	John P. Larch '80	Linda L. Pasden	Richard F. Terry '68
Robert J. Burke '76 +	Carolyn S. Garrison '64	Meta M. Lasch '76	Mary Frances Petit '62 +	Thomas E. Terry '75
Neva N. Caldwell '22 +	Richard D. Garrison '59	Howard G. Lemasters '49 +	Susan Rayle '78	B. Ann Thomas +
Clyde '53 & Joan '62 Campbell	Gloria E. Gasser '80	Theresa Lemasters '48	Robertta Raymond '78	Nancy Crow Trentini
Leah Gracey Campbell '39 +	Edward C. Gaughan +	John P. Liptak '80	Phillip S. Rea '65	Susan Wagner '68
Richard H. Carter	Christopher M. Gibbs '08	Virginia M. Lutes +	Karen Rea '65	LeRoy A. & Eve L. Wallin '70
Audrey Ciripompa	Hazel Jane Gilleland +	Kathleen A. Maestle '93	Carol Jean Reuther	Joan M. Watkins '65
David D. Cohen '65 +	Donelda J. Godfrey +	Helen Kimble Maier '48	Richard & Sandra J. LaPosta '64 Riopelle	Wesley L. Watson '01
Lula K. Collins +	Diane B. Gongaware '78	Ruth Markwell	Mary Jane Reaney	Barry E '66 & Patricia A Lohr '68 + Weber
Jeremy J. Compton '99	Robert & Patricia '63 Gracey	Toni J. Mason '60 +	Ritson '45 +	Carol F. Webster '77
Sharon Murphy Coote '69	Jack D. Grewell '34 +	Rita M. Masur	Barbara C. Robinson	Flip West
C. Nolan Cox '72	Edward G. Grimes '71	Catherine C. Mattingly '62	E. Kent Robinson '61 +	Gary West '58
Naomi Craig +	Chester P. Grossi '47 +	Daniel N. Maxwell '31 +	Ronald L. Robinson '53 +	Elizabeth Wolf
Dennis L. Daugherty '76	Rose Grossi +	Marilyn A. McCain '72	Sam K. Rollins '68	Mary Ann Wolf +
	Robert P. Haas '57	Irene Meagel +	Esther Rowe +	

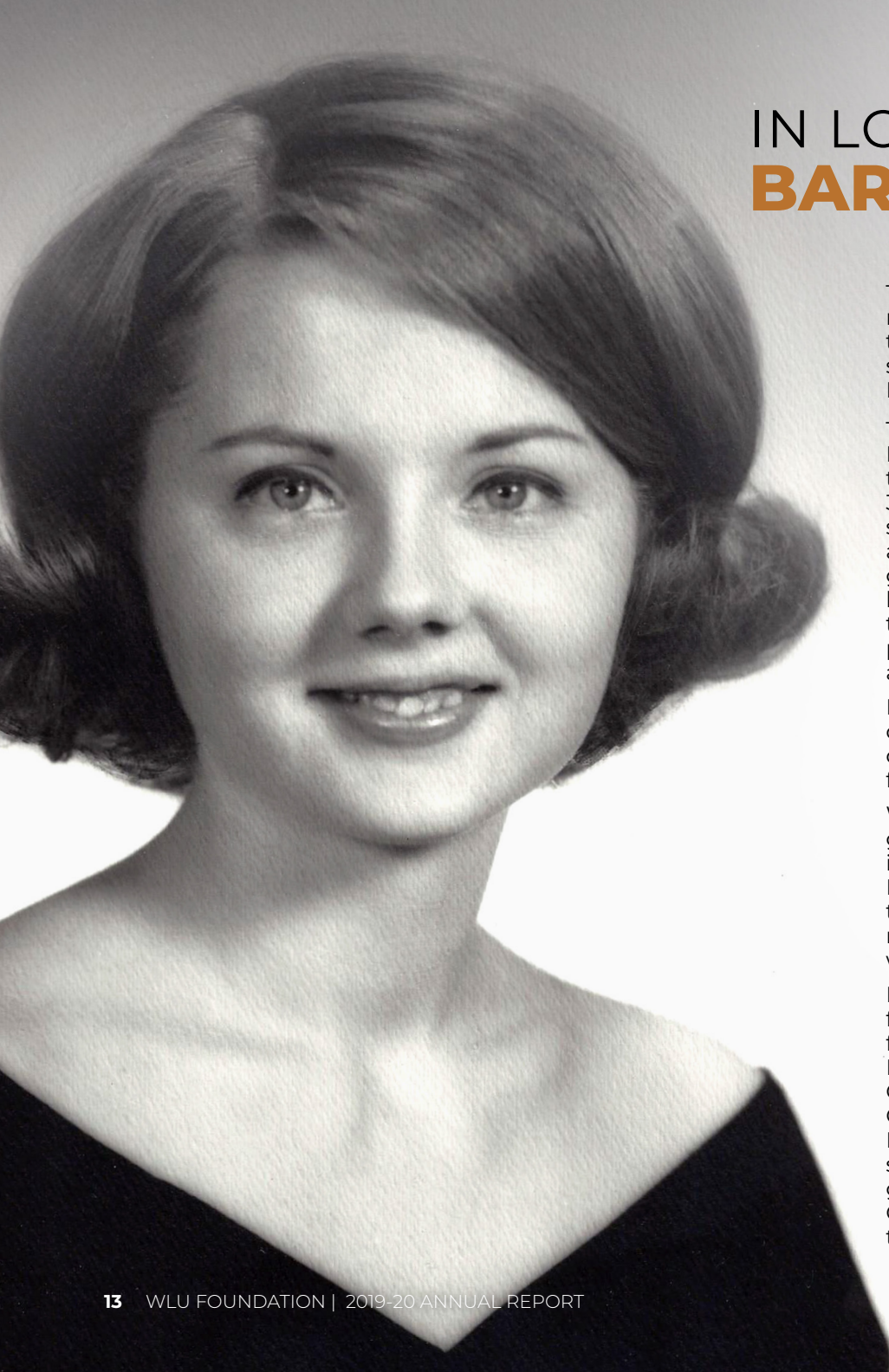
+Deceased

JOHN P. MCCULLOUGH SOCIETY

Individuals, foundations, and corporations who have already contributed a minimum of \$25,000 in cumulative giving are recognized as members of the John P. McCullough Society.

A & B Sales, Inc.
 Lee Weeks Abraham '56 +
 Acetylene Products Corp
 Jack C. Adams '63
 Marty '75 & Patti '76 Adams
 Mary K. Ahrens +
 Aladdin Food Management
 Services, LLC
 The Albert Schenk III & Kathleen
 H. Schenk Charitable Trust
 American Electric Power
 Foundation
 Anissa Anderson '93
 Charles R. '66 & Letty Annett
 Axiall Foundation, Inc.
 Barnes & Noble College
 Bookstores
 Bayer Corporation
 David '70 & Barbara '70 + Beck
 Belmont Savings Bank
 Phyllis A. Beneke +
 Bruce L. & Donna Waugh '65
 Berlage
 Mildred Kaetzel Biggs +
 Albert '49 + & Thais '76 Blatnik +
 Bordas & Bordas, PLLC
 R. Emmett Boyle & Debra J.
 Boger
 William A. Brenner
 Bristol-Myers Squibb
 Foundation, Inc.
 Donald '52 & MaryAnne Bruno
 Neva N. Caldwell '22+
 Clyde '53 & Joan '62 Campbell
 Leah Gracey Campbell '39 +
 Louis '65 & Darlene '61
 Cardamone
 John W. Carenbauer, Sr.+
 Charles M. & Thelma M. Pugliese
 Charitable Foundation
 Chesapeake Energy Corporation
 Chevron North America
 Exploration and Production
 Company
 Chris Hess Foundation
 Civitan Club of Wheeling Inc.
 Joseph D. '64+ & Sandra Clark
 Claude Worthington Benedum
 Foundation
 David '77 & Ann Coffaro
 David D. Cohen '65 +
 Lula K. Collins +
 Community Foundation for the
 Ohio Valley
 Consol Energy
 Cornerstone Group
 Kenneth D. Cover '65
 Naomi Craig +
 Mark D. Crow
 Charles & Lavoo Crutchfield +
 DaimlerChrysler Corporation
 Fund
 Joseph E. Davis '61
 Alfred R. de Jaager
 Leslie DeFelice '76 & Connie
 Nelson
 Shirley Ann Dietz +
 Doctors Urgent Care
 John '78 & Kimberly '77 Dolan
 Dominion Foundation
 Catharine Hoffman Dorer +
 Dragon and Phoenix Software
 Inc.
 Roger L. DuBois '53
 Edgar Martin Classic
 David '64 & Linda '64 Edwards
 Paul & Helen Elbin +
 Lynne & Ben Exley IV
 ExxonMobil Foundation
 Francis J. and Edith Jackson
 Family Foundation
 Nicholas & Fran Frank
 Glenn '65 & Eula Fresch
 James '61 & Carol '60 Frum
 Hazel Jane Gilleland +
 Joe '69 + & Rita Gnazzo
 Cynthia Goad
 Robert Godfrey +
 Donelda J. Godfrey +
 Martha Hudson Goodrich '44
 Stephen Greiner & Nancy Miller-
 Greiner
 Jack '34 + & Mildred Grewell
 John L. Grim
 Brian & Rachele Harlow
 Robert & Stephanie Harris
 Kenneth Harris '37 +
 Harry & Constance '81 Hein
 Howard '66 + & Catherine
 Herrington
 Ralph E. & Helen M. Herzler +
 W. Peterson Holloway
 Janet L. Honecker
 Fred & Audrey Horne
 Huntington Corporate Giving
 IMG
 Gary '64 & Paula Inclan
 Norma Jeffries +
 Johnson & Johnson Family of
 Companies
 David Jones '60 +
 Daniel '75 & Deborah '75 Joseph
 Michael J. Joseph +
 Brooke P. Koehler
 H. R. Bucky '64 & Joanne Kopf
 Koppers Industries
 Rachel Katherine Krinke '45 +
 Elizabeth J. Kuhn '00
 Howard G. Lemasters '49 + &
 Theresa '48 Lemasters
 Helen E. Levenson +
 Lary Loew '75 +
 Howard & Wendy Long
 Louis & Sandra Berkman
 Foundation
 Harry & Helen '61 Ludeman
 Lyell B. and Patricia K. Clay
 Foundation, Inc.
 Main Street Bank
 Phyllis A. Marsh
 Margaret Anne Mayerich
 Daniel N. Maxwell '31 +
 Jeremy C. McCamic
 Thomas '54 & Peggy '50
 McCarroll
 John P. & Rhonda McCullough
 Irene Meagel+
 Virginia T. Mellott '43
 Stella Caravas Misoyianis '52 +
 R. Clark '53 + & Patricia Morton
 Norman B. Moyes '53
 Rudolph Mumley '50 +
 Nationwide Foundation
 Florence Irene Nesbitt +
 Kathryn T. Neuman +
 Mary Jane Norona +
 Jo Lynne Nugent '75
 Nutting Foundation
 Ogden & Snookie Nutting
 Teresa Morton Nyhart
 Ohio County Board of Education
 Ohio County Commission
 Ohio Valley Health Services &
 Education Corp.
 Olga Kohut Sebulsky Charitable
 Fund
 Ormet Corporation
 P & G Fund
 Andrew '54 & Judith Bartell '55
 Paesani
 E. Alex '82 & Valerie '87 Paris
 Parkvale Bank
 Andrew '69 & Linda Pasden
 Pfizer, Inc.
 Donald E. Pirro '66
 Pittsburgh Alumni Chapter
 Pittsburgh Conference on
 Analytical, Chemical & Applied
 Spectroscopy
 Prezkop - Chappellear &
 Associates AC
 Project BEST
 Vern & Aurelia Hauch Reed '68
 Thomas '70 & Eileen Reinbold
 Mary Jane Ritson '45 +
 Robert L. and Helen E. Levenson
 Charitable Trust
 Jerry '60 & Connie '57 Roberts
 E. Kent '61 + & Barbara Robinson
 Albert '80 & Susan Roszczyk
 Ryan Ferns Healthplex
 William P. & Jane Atkins '63 +
 Sargent
 Douglas '73 & Susan '71 Sarkis
 Sara H. Schnitzler '49 +
 Larry H. Sebulsky +
 Howard L. Shackelford '73
 John C. Shaw +
 Terence A. Shimp '68
 Vincent '64 & Linda Shimp
 Floyd Shuler '64
 George Smith '68 +
 Sodexo Campus Services
 Solutions 21, Inc.
 Peter '69 & Jingsi Sontag
 Southwestern Energy Company
 Nick '75 & Patti '75 Sparachane
 Philip '64 & Sharon Stahl
 Fred & Joan Stamp
 State of West Virginia - Higher
 Education Policy Commission
 Cynthia L. Stickley
 George E. Stifel +
 Swisher International, Inc.
 Lawrence H. Talley +
 The Health Plan of the Upper
 Ohio Valley, Inc.
 Touchstone Research Laboratory
 Tri-State Area Citizens
 Scholarship Foundation
 UMWA/BCOA Training and
 Education Fund
 Shawn '87 & Julie '86 Ullom
 United Bank, Inc.
 Valley National Gases, Inc.
 Vance Memorial Presbyterian
 Church
 Verizon West Virginia
 WCHS-TV
 WesBanco Wheeling
 Gary '58 & Flip West
 West Virginia University Research
 Corporation
 Wheeling Island Hotel Casino
 Racetrack
 Linda Whitaker
 James Taibi '86 & Kristina
 Williams '86
 Williams MLP Operating, LLC
 Randy & Betty Worls
 William C. Wright '64 +
 WTRF-TV
 WV Department of Education &
 The Arts

+Deceased



IN LOVING MEMORY **BARBARA DOWGIALO BECK**

The WLU Foundation is privileged to work with donors to establish funds in memory of their loved ones. Often an emotional process for those establishing the fund, it is always rewarding to see students lifted up in the memory of someone special. A recent example of this is the Barbara Dowgialo Beck Education Scholarship, which the WLU Foundation administers.

The scholarship was established by Barbara's husband David after she tragically passed away on January 31, 2018. He called to discuss the scholarship soon after she passed, and it was very important to him to get it started. He revealed that they had been discussing a scholarship together for a while. Now, though painful, he planned to move forward alone to perpetuate her legacy.

Barbara passed away at the young age of 69. Married to David for 47 years, the couple had three beloved children and four grandchildren.

West Liberty meant a lot to Barbara. A graduate of West Liberty State College in 1970 with a degree in Elementary Education, she was a member of the Delta Zeta Sorority and was a majorette. West Liberty was also where she met David.

Barbara spent her career in education fulfilling her passion for teaching. Her first teaching position was at Pineville Elementary School in Mecklenburg County, N.C. She later taught at Good Shepherd Episcopal School in Richmond, Va. Whether at elementary schools or teaching the challenging game of bridge at Chesterfield County's adult education program, teaching was her comfort zone.

Her husband David graduated with a degree in chemistry in 1970 and was an active member of the Theta Xi Fraternity. Barbara and David have already given back to their alma mater over the years and David remains active in the Alumni Association and the Florida Alumni Chapter.

It was their shared vision to begin a scholarship to help WLU students that resulted in The Barbara Dowgialo Beck Education Scholarship.

"In the 70s when we went to West Liberty State College, tuition was inexpensive," said David. "We almost received a free ride. Now it's time to pay for the fine education we received and to help others."

Markell Oliver, a sophomore from Wellsburg, W.Va., is the inaugural recipient of the scholarship. When David Beck traveled back for Homecoming in the fall of 2019, he invited Markell to attend the President's Recognition Dinner as his guest. The two got along wonderfully.

"I had the opportunity to meet Mr. Beck last fall during homecoming," said Markell. "He's one of the sweetest men I've ever met, and he even checked in on me during quarantine. You can tell that he's a very special person."

MEMORIAL & HONORARY GIFTS

“This scholarship has had the biggest impact out of anything in my financial aid package. It’s a very generous amount, and keeps me from having to take out additional student loans. I can’t thank Mr. Beck enough for this opportunity.”

Markell Oliver
Education Major



David Beck and Markell Oliver, pictured at the President's Recognition Dinner

During the Homecoming Weekend, Markell was able to learn more about both of the Becks. Hearing firsthand how much Barbara meant to David had a profound impact on Markell and solidified the importance of honoring her legacy.

“He told me a lot about Mrs. Beck, her career as a teacher and the legacy he wants to establish for her to inspire future generations of teachers at West Liberty,” Markell said. “I take my role in carrying that on very seriously, especially since I am the first person to receive this scholarship.”

Their conversation at the President's Recognition dinner went so well in fact, that David invited Markell to meet some of Barbara's sorority sisters on campus the next day. Much like David, the sisters of Delta Zeta were pleased such an outstanding student was entrusted with Barbara's legacy. They even presented her with a bracelet to commemorate the first recipient of their late sorority sister's scholarship.

True to her word, Markell has continued to strive towards

excellence in Barbara's memory. She has dedicated herself to the teacher education program, and made the Dean's List in the Spring of 2020. After graduation she hopes to work locally as an elementary school teacher, preferably teaching first or second grade. She remains grateful for the help – both financial support and friendly encouragement – that she has received from David Beck as the Barbara Dowgialo Beck Education Scholar.

“This scholarship has had the biggest impact out of anything in my financial aid package,” Markell said. “It’s a very generous amount, and keeps me from having to take out additional student loans. I can’t thank Mr. Beck enough for this opportunity.”

The scholarship is endowed with the intent of providing that opportunity to many more WLU students pursuing a degree in Education. Barbara's legacy will continue to shine on the Hilltop and inspire many future Hilltoppers.

REMEMBERING THOSE WE LOVE

During fiscal year 2020 gifts were made in memory of the following individuals:

Nick Baker
John H. Banco
Mary Kathy Banco
Thomas J. Babb
Joseph A. Bartell
Barbara Dowgialo Beck
Loretta J. “Lucky” Brenner
Margie Brown
Reed Burke
Dreama Bush
Nelson Cain
Sue Cain
Gregory L. Cardamone
Tom Cerra
Kylie Clark
Charles B. Davis, Jr.
Charles B. Davis III
William J. Dolan
Millie Childers Engel
Ann P. Foster
Thomas Grall
Robert Godfrey
John Hennen
William & Patricia Johnston
E. J. Joseph
Jennifer Zambito Knaur
Robert L. Levenson
Lary Loew
Robert L. & Nancy C. Loew

Dorothy Long
Scot Malson
James G. Marsh
Shane Maynard
Kenneth B. McMillen
C. Tim Meighen
Johanna H. Meissner
R. Clark Morton
David Nugent
Joan Nugent
Donald L. Pahl, Sr.
Bernie K. Peace
John C. Shaw
Clyde Thomas
Robert Villamagna, Jr.
Roland E. “Rollie” Williams
Mike Zambito
Sam Zambito

HONORING THOSE WHO INSPIRE US

During fiscal year 2020 gifts were made in honor of the following individuals:

Linda Cowan
Jeri Dailey
Stephen Greiner
Deb Irwin
Alfred R. de Jaager
John P. McCullough
Cathy & Jeff Monteroso
Hilary Bougher-Muckian
Alexandra C. Rine

HONOR ROLL OF DONORS

Shown here is a listing of the many generous individuals, corporations, foundations, and organizations who contributed to the West Liberty University Foundation between July 1, 2019-June 30, 2020.



WELCOME
Dr. W. Franklin Evans
37th President of WLU

PRESIDENT'S CIRCLE

President's Circle is reserved for donors contributing \$1,500 or more within a fiscal year and includes donors in six different giving societies.

After a national search that attracted more than 70 applications, West Liberty University's Board of Governors named Dr. W. Franklin Evans as its next president. President Evans officially takes office on Jan. 1, 2021.

To read more about our new leader, please visit westliberty.edu/news.

1837 SOCIETY **\$100,000 OR MORE** **Individuals:**

Donelda J. Godfrey +
Irene Meagel +
Terence A. Shimp '68
Gary '58 & Flip West

Corporations, Foundations & Organizations:

Acetylene Products Corp
Claude Worthington Benedum
Foundation

WILLIAM CURTIS SOCIETY **\$25,000-\$99,999** **Individuals:**

Jack C. Adams '63
H. R. Bucky '64 & Joanne Kopf
Andrew '54 & Judith Bartell '55 Paesani
E. Alex '82 & Valerie '87 Paris
James Taibi '86 & Kristina Williams '86

Corporations, Foundations & Organizations:

Belmont Savings Bank
ExxonMobil Foundation

LIBERTY SOCIETY **\$10,000-\$24,999** **Individuals:**

Marty '75 & Patti '76 Adams
Charles R. '66 & Letty Annett
Bruce L. & Donna Waugh '65 Berlage
William A. Brenner
David '77 & Ann Coffaro
Leslie DeFelice '76 & Connie Nelson
James '61 & Carol '60 Frum
Robert & Patricia '63 Gracey
Janet L. Honecker
Gary '64 & Paula Inclan
Harry & Helen '61 Ludeman
John P. & Rhonda McCullough
Teresa Morton Nyhart
Linda Whitaker



Corporations, Foundations & Organizations:

Albert Schenk III & Kathleen H. Schenk Charitable Trust
 Alco Fence Co. of Central WV
 Alex E. Paris Contracting Company, Inc.
 Francis J. and Edith Jackson Family Foundation
 Main Street Bank
 Ohio County Commission
 Visiting Angels

**WINDING ROAD SOCIETY
 \$5,000-\$9,999**

Individuals:

David '70 & Barbara '70 + Beck
 R. Emmett Boyle & Debra J. Boger
 Donald '52 & MaryAnne Bruno
 David D. Cohen '65 +
 David & Judy '68 Glatz
 Stephen Greiner & Nancy Miller-Greiner
 Thomas T. & Cheryl B. Mendenhall
 Vern & Aurelia Hauch Reed '68
 Albert '80 & Susan Roszczyk
 Dean & Danielle Thomas

Corporations, Foundations & Organizations:

Harvard University
 John C. Shaw Scholarship Fund
 River Valley Health Foundation Inc.
 Schwab Charitable Fund
 Sisters of St. Joseph Health & Wellness Foundation
 W.Va. - Ohio Motor Sales, Inc.
 WesBanco Wheeling
 Wheeling Park Commission

**ACADEMY SOCIETY
 \$2,500-\$4,999**

Individuals:

Anissa Anderson '93
 Paul & Anne Barber
 Tara M. Beiswenger '88
 Clyde '53 & Joan '62 Campbell
 Louis '65 & Darlene '61 Cardamone
 Robert Cooper & Janet Loew '85
 Kenneth D. Cover '65
 John '78 & Kimberly '77 Dolan
 William '55 & Phyllis '57 Evans
 Lynne & Ben Exley IV
 Diane B. Gongaware '78
 Martha Hudson Goodrich '44
 Jason & Sarah Koegler
 Carol Ann Loew
 Janet Loew '85 & Robert Cooper
 Scott McNulty '87 & Maya Crone
 David W. Miller
 Andrew '69 & Linda Pasden
 Phil & Wendy Polack
 Sharon S. Saseen
 Scott R. '97 & Annie Shipman
 Floyd Shuler '64
 Jeffrey Simms '89
 Nick '75 & Patti '75 Sparachane
 Jennifer Lee Takacs '95
 Anonymous (1)

Corporations, Foundations & Organizations:

American International Group, Inc.
 Bordas & Bordas, PLLC
 Civil & Environmental Consultants, Inc.
 Cornerstone Group
 Freddie Mac Foundation
 Grantmakers of Western Pennsylvania

Kalkreuth Roofing & Sheet Metal, Inc.
 Panhandle Farmers Mutual Insurance Company
 Pfizer, Inc.
 Progressive Insurance Foundation
 Ranch Sportsmans Club Inc.
 David and Sara Cohen Giving Fund
 Wells Fargo Foundation Educational Matching Gift Program

**HILLTOP SOCIETY
 \$1,500-\$2,499**

Individuals:

Robert K. Abel '73
 Richard H. Achtzehn '69
 Jason K. Blair '95
 Christine Carder '72
 Thomas A. Cervone '75
 Joseph D. '64 + & Sandra Clark
 Aaron T. Conklin '01
 Bruce Cox '76
 John Craig '72
 Brian L. & Vicki Crawford
 Dan & Janet '81 Dolan
 Steve & Mary Dolan
 Roger L. DuBois '53
 David '64 & Linda '64 Edwards
 Glenn Elliott, Sr. D.O. '72
 Samuel & Mildred '52 + Engel
 Richmond W. Glover '63
 John William Hoppers '63
 Thomas F. Howley '58
 Daniel '75 & Deborah '75 Joseph
 Katie L. Kacmarik '08
 Eric G. Koontz '01
 T. Lance LaFollette '84
 Theresa Lemasters '48
 Robert & Patricia Levenson
 John A. Lovrak '69

Henry '61 & Mary Marockie
 Michael J. Marshall
 David Byron McMillen '69
 Vince '62 & Kay '97 Monseau
 Norman B. Moyes '53
 Noah & Kayla Mull
 Fred '63 & Karen Principe
 Jerry '60 & Connie '57 Roberts
 Philip '64 & Sharon Stahl
 Fred & Joan Stamp
 Thomas '75 & Brenda '79 Thomas
 Nancy Crow Trentini
 Thomas & Karen '78 Tuttle
 Gilbert '76 & Eileen Ullom
 David & Beth '85 Weaver
 Anonymous (1)

Corporations, Foundations & Organizations:

BSN Sports
 Camp Marketing Services, LLC
 Pittsburgh Alumni Chapter
 Robert L. and Helen E. Levenson Charitable Trust
 Schermer Enterprises, LLC
 Seth Color Resources

HONOR ROLL OF DONORS

Shown here is a listing of the many generous individuals, corporations, foundations, and organizations who contributed to the West Liberty University Foundation between July 1, 2019-June 30, 2020.

TOWER

TOWER CLUB \$500-\$1,499

Individuals:

E. Marc '79 & Debra '80
Abraham
Betsey A. Alden '61
Cheryl M. Anderson '71
Michael Aulick
Michael '78 & Jean '76
Bailey
Rowena Baker
Chip & Tami Bolon
John R. Bonar '35
Fred & Carol Booth
Giovanni & Elizabeth
Borsellino
Suzanne Styers Boundy '61
Patrick & Sharon Braun
Peggy A. Brummett '69
Chris Bucon
Joe '91 & Julie Carey
Larry '68 & Cathy '68
Carpenter
Marcia Carroll
Anthony Chiazza
R. A. Cipriani '55
Dennis & Vicky Cook
Kyle & Katie Cooper
Thomas & Mary Cooper
Gary & Devanna Corley
Ryan S. Courtney '02
Todd '98 & Lisa '01 Cover
Rick Crosier
Joseph E. Davis '61
Alfred R. de Jaager
John '95 & Kristine Deel
Rodney Dieringer
Timothy W. & Julie Dyer
Richard '64 & Patricia Edge
Brian Edison '83
Dave & Mary Ann Edwards
Mary Kim Elkins
Douglas & Ann+ Foster
Glenn '65 & Eula Fresch
James Fuentes
Stacy Gamel
Carolyn S. Garrison '64
Audrey Greene '65
James P. Gribbin

Edward G. '71 & Sandra L.
Grimes
John '81 & Barbara '82
Guadagnino
Matthew Harder
John '75 & Lynn '73
Hellstern
Chad & Angie Zambito Hill
W. Peterson Holloway
Fred & Audrey Horne
Paul & Margo Howlett
Russell '79 & Marylu '79
Hutchins
Daniel & Andrea Irwin
David '67 & Alice '67
Javersak
Donald Jernigan '80
Richard A. Johnston
The Johnston Family
Kevin Keaton
Paul W. King, Jr.
Chuck '65 & June '66
Knaack
Miriam Miller Knowles '69
Edward Kochman '67
George L. Kusko II
Barbara J. Laifer '75
Jimmy LaRowe
Scott & Renee Logan
Howard & Wendy Long
John & Gail Looney
Phyllis A. Marsh
Mario '65 & Chris '64
Mastroianni
Ronald '78 & Michelle '79
Matella
Donald J. McCoid '65
William '75 & Georgeann
'81 Mercer
Denise Miller '76
John '76 & Denise '76 Miller
Aaron '03 & Carrie '00
Monseau
Kayla Mull
Christine C. Muroski
Frank Muzopappa '58
Adolph & M. Ellen
Neidermeyer '79
Kallen B. Weaver Nelson '10

Donald Nickerson Jr. '82
Jordon J. Nolan '15
Jo Lynne Nugent '75
Ted & Joan Olszewski
Mary Palma
Mark A. Pickens '86
Roberta Raymond '78
Timothy & Linda
Rectenwald
Wendy Reedy
Michael S. Robertson '70
Alan Eugene Saunders '74
Richard Schoene II '84
Sylvia Senften
Howard L. Shackelford '73
Mitch A. Smith '11
Laurel Stollar Sprague '92
Samuel W. Stewart '03
Cynthia L. Stickley
Michele R. Sweeney
Cody Tominack '09
Merle '76 & Geraldine '75
Tournay
Barbara Visnic '82
Christopher Voyiatt '87
David Waples '63
C. Dan '76 & Cynthia '71
Warner
Wesley L. Watson '01
Betty Weaver & Kallen
Weaver Nelson '10
Duane & Julia Whiting
James S. Wilson, DDS
Annie P. Wise '72
David '79 + & Elizabeth '64
Wright
Basil P. Zabek '64
Michael Zeno '78

Corporations, Foundations & Organizations:

Abraham & Company,
PLLC
American Electric Power
Foundation
Apollo Pro Cleaning &
Restoration
Bonfire Funds Inc.

Bridgestone Americas
Trust Fund
Carenbauer Wholesale
Corporation
Chapman Corporation
Generations Restaurant &
Pub
Gilbert C. Ullom Jr. CPA
IBEW 141
Kennen & Kennen Realtors
Middlebourne Park &
Recreations
Mifax-Wheeling
NASA WV Space Grant
Consortium
Ohio Shockwave
Preston High School
Shadyside Tiger Band
Patrons
Sodexo Campus Services
Spillman Thomas & Battle,
PLLC
Starvaggi Charities, Inc.
State Farm Companies
Foundation
Swan's Sport Shop
Tri State Dental Hygienist
Association
Wells Fargo Advisors
Wheeling Area Soccer
Association, Inc.
Wheeling District Dental
Society
Wheeling Hospital, Inc.
Zeno, Pockl, Lilly and
Copeland, A.C.

FOUNDER'S CLUB \$100-\$499

Individuals:

Carole J. Adams
Kathleen Alvarado
Abraham & Company,
PLLC
Jeff Anderson
Jane Andruscik
Theresa Applegate
Thomas Ash
Lou Aulick
Rebecca J. Ault

FOUNDER'S

Thomas J. Babb +
Joshua W. Bach '98
Betty M. Bailey '70
Lynne Koehler Bailey '65
Thomas '64 & Patricia '64
Baird
Kathleen Ballato '74
Jack Barber
Cheryle Basinger
Jamie R. Battista '96
Robb Bauer '92
William Beatty '72 & Janice
Runyan
Thomas H '62 & Lynda
Becker
Randy Beihl
David R. Bell '09
Doug Bentz
Joyce Berdine
Janet Besece-Sexton
Frank & Lynda Billotto
Nina Billotto
David W. Bixby '74
Christopher K. Blair '07
Brent Blake
John Blangor '87
Elaine M. Blasko
Mark Bohman '75
TerryJill Bonar
John R. Bonassi '69
Glenn & Lisa Bostrom
Cynthia L. Bougher '98
Margaret Bowman
Adam Boyers
Patrick C. Bracey
Everett R. & Sandra K.
Bragg
Rocky & Michele Bragg
Judith R. Breon '71
John & Sharon Briggs
Kenith '02 & Jessica '03
Britt
Kimberly Brown
Nathaniel Brown
Niki Burkhart
Susan C. Burkholder
Robert '61 & Sharon '63
Burton
Eric J. Butler

FOUNDER'S (con't)

Kay K. Byard '62
 Raymond '66 & Karen '65
 Cappone
 Paula Carnes '66
 Joe & Sandy Cartisano
 David & Sally Case
 Partick Casey & Sandra
 Chapman
 Fred T. Chambers '64
 John W. Chambers '74
 Joan Chapman
 Linda Chappell '67
 Gregory Chase
 Fuhua Chen
 Lihua Chen
 Audrey Ciripompa
 Patricia E. Clark '75
 Gary T. Clough '07
 James C. Cochran '76
 Barry D. Coleman '72
 Dakota C. Conwell '17
 Scott A. Cook '89
 Sharon Murphy Coote '69
 Richard '59 + & Mary Jane
 '57 Copeland
 Anita Corabi
 Eric & Alisha Cottrill
 Andrew A. Coulter '02
 Lanny Couto
 Joanna J. Cover '70
 Linda Cowan
 George H & Linda F Crocker
 Paula Curtin
 Ronald & Jacie D'Amico
 Ryan & Gina Dansak
 Charles H. & Marilyn K.
 Daub
 James Davis
 Joseph Davis
 Pamela Davis
 Gerald de Jaager
 Mark A. Delbrugge '79
 Joseph '66 & Kathleen '65
 Demko
 John Dempsey '90
 David Dent
 Lisa K. DiCarlo '80
 Benjamin Dobkin
 Kristy L. Dobson

Daniel R. Doman '70
 Joseph '72 & Debra
 Donahue
 David '64 & Barbara '64
 Dougherty
 Sean & Amber Doyle
 David A. Dudzik '13
 Theresa M. Dulski
 Jeff & Amy Eddy
 Joe Ellis '79
 Peter Emborsky
 Derek '02 & Nicole '03 Ennis
 Richard J. Faiello '69
 Thomas J. Fallon III '86
 Stacy Faulk
 Mark & Patricia Ann '76
 Ferrell
 Ronald S. Ferrell '93
 Patricia Ferris '78
 James A. Fiorilli '71
 Leslie R. Fish '70
 Jacob M. Flatley '15
 Robert Flint
 William Foster
 Bill & Nancy Franke
 Charla S. Franke '66
 Christopher Freeman '83
 Heather Fuqua
 Jasmine Fuqua
 Linda Garcia
 Brandon Garner
 Robert Gaudio '74 & Claire
 McDonald
 William E. Gavin '69
 Jody R. Geese '87
 Michael R. Geis
 Nelson & Bonnie '97 Gilbert
 Joshua Godar
 Michael Gragan
 H. Charles Grubbs '71
 Jeffrey Grubbs
 Lee P. Gruber
 Judith Osburn Gummere '61
 Louie '88 & Donna '87 Haer
 Joseph R. Hagedorn '08
 James & Janice Hague
 Shannon Halicki
 William Hall
 Sarah Hamric

Gregory Hannan '74
 Jacquelyn Harder
 Gloria Hartman
 Diana Harto
 Walter & Sally Hartory
 Scott Harvey '79
 Donna J. Hastie '74
 Andrew A. & Tara L. Hawkins
 Paul L. Heffner '17
 John & Nikki Heiserman
 Scott Helmke
 Judith D. Hennen '73
 Penny Hensley
 Tamila L. Higley '87
 Betsy J. Hill '71
 Sharon L. Hinerman-Hall '75
 Dan Hogue
 Stephanie Hooper &
 Matthew Golein '04
 Robert G. Hores '60
 Paul F. Hothouse '72
 Cynthia J. Houser
 David Howell
 Peggy Howell '81
 Joshua Howlett
 Larry P. Howlett
 Martin C. Hudek '75
 James Hufschmitt '68
 Brian H. Huggins '06
 Jarrod P. Huggins
 Mike & Patty Hughes
 Jeanette Humbel
 Michael Hummel '89
 Hilton Ingraham
 Matthew Irwin
 Darla Jackson '81
 Frank & Kathleen Jackson
 Lee '69 & Carolyn '70
 Jackson
 Tim Johnson
 Charles & Lynne Jones
 Michael '68 & Janet Joseph
 Jeffery T. Joy
 Sherry Joy '74
 David B. Kadar '74
 Matt & Jera Kanicki
 John '71 & Debbie '72 Karas
 Lourdes Karas
 Charles F. Kazienko '69

Paula M. Keith '71
 Billy E. Keller '70
 John S. & Letitia C. Kemp
 Gary Kenamond
 Karen Kettler
 Tara E. Keys
 James R. Kimmel '01
 Barry Kinney '75
 Richard Koch '78
 Bill '71 & Debby Koegler
 Dick & Anna Mae '58
 Koehler
 Shawn & Stephanie Konya
 David A. Kraus '70
 Robert & Melinda Kreisberg
 Stephen '76 & Mary
 Krempasky
 Robert & Tammy Kruse
 Tammy R. Kruse '07
 Anthony Kuklica '75
 Amber Kyle
 David & Amber Kyle
 Thomas '80 & Sharon '82
 Lafferty
 Emily Lamberti '17
 Michael D. Lamberti '16
 Vincent & Cynthia Lamberti
 Rich & Kiley Lanham
 Arlene J. Lawson '82
 Jacob & Lisa Laya
 Joseph '01 & Emily '92 Leffe
 Janice E. Leith '68
 Kenneth Leonard, Jr.
 Vincent Leusner '82
 Larry J. Liberto '64
 Bernard '70 & Karen '70
 Linn
 Kathryn L. Loparo '57
 Christopher '96 & Ingrid '96
 Loy
 Donna J. Lukich '79
 Anthony R. Macedone
 Christine Machel '73
 Kathleen A. Maestle '93
 Gerald & Laura Main
 John R. Marchlenski '75
 Edward '63 & Irene + '64
 Marks
 Ruth Markwell

Karissa Martin '12
 Mary Massey '73
 Lee E. & Kathleen A. Mathey
 Ronald '65 & Mary Lou '62 +
 Mauck
 Charles & Marlena Maynard
 Devin Mazik
 Richard (Gene) McCausland
 Ronald '91 & Tammy
 McClain
 Tammy McClain
 Carolyn McConnaughy '83
 Greg McCroskey
 Ryan P. McCullough
 Samuel T. McCullough '12
 Roderick A. McCune '96
 Cindy McGee '90
 Dakota McGrew
 Stephen D. & Julia F.
 McPeck
 Nona McQuay '53
 Rebecca Meacham
 Melody Meadows
 Stephanie L. Meredith '98
 Michael Meyers '74
 Teresa Michaels
 Ed & Pam Milam
 Reva Milhoan
 Elizabeth Miller
 Jane Miller '73
 Louis '67 & Susie Miller
 Thomas Miller
 Jeffrey & Catherine
 Monteroso
 Robert '69 & Sabrina '95
 Montgomery
 David B. Moore '65
 Thomas R. Morgan II '11
 Will & Yvonne Morton
 Steve & Karen Muenze
 Johnathan J. Murphy '10
 Mary E. Murphy '98
 Janet E. Murray '85
 Jill I. Murray '12
 Kay Murray '68
 Nicholas & McKenna
 Musgrave
 Betsy Dilly Myer '73
 Eric C. Neubauer '85

John '70 & Jennie '70
 Newbrough
 Jim Nida
 Carl '01 & Stephanie North
 Robin O'Brien
 Shelly Onorato '81
 Charles '72 & Darby '72
 Orum
 Frances Morton
 O'Shaughnessy
 Frank & Marsha '64
 Paczewski
 James '75 & Karen '75
 Padden
 Michelle L. Panepucci
 Vincent J. Paoletti '63
 Patrick Parham
 Roger Parsons '70
 Edward & Mona Pastilong
 Kyle Patrick '19
 Josh Pattison
 Jerry L. & Susan Pelle
 Paul '81 & Nancy '80
 Peluchette
 Rebecca Perron
 Harold & Deborah Pickens
 Thomas Pickering '70
 Thomas M. Pinto '74
 Michael '69 & Cherry '68
 Pivik
 Dorothy R. Pizzuti '84
 John M. Porco '72
 Barbara Pace Porter '61
 Raymond '65 & Martha '66
 Prantil
 Thomas '88 & Kimberly
 (Trevena) '98 Puskarich
 Timothy J. Queen
 Norman C. Radcliffe '68
 Austin Rath
 Lorna Fazzaro Reach '68
 Craig & Melissa Reed
 Scott Reed
 Terri Reed
 Rodney '70 & Darlene '70
 Reese
 Angela Rehbein
 Corey Reigel
 John E. Reilly

HONOR ROLL OF DONORS

Shown here is a listing of the many generous individuals, corporations, foundations, and organizations who contributed to the West Liberty University Foundation between July 1, 2019-June 30, 2020.

FOUNDER'S (con't)

C. Timothy '69 & Patricia '69 Rhodes
 Patricia Rhodes '69
 James S. & Jill A. Riccardo
 Stephen Richards
 Kelly S. Rine '83
 Stephen T. Riner '09
 Sherry E. Rocchio
 Timothy A. Rodsky '71
 Charles '70 & Karen '72 Roman
 Michael Romano '72
 Jeff Roy
 Wayne E. Rutter
 Donald R. & Ruth A. Salera
 Joel J. '06 & Cassie Sansone
 Mareena Scalia
 Mary Kaye Scaramucci
 Rev. R. Paul Schafer
 James H. Scheetz '78
 Bradley & Crystal Schumacher
 Dan & Karen Schutte
 Noel '61 & Joyce '62
 Schwertfeger
 J.C. "Chuck" Sconish
 Charles Scott '71
 Corey A. Secrist
 Curt '97 & Tammi Secrist
 Swanson Secrist
 Roger G. Seeber
 Cassandra Seth
 Ronald L. Shenk '68
 Jerry Shook '77
 Robert Shreve
 Bill Signorelli '73
 Jacob Simpson
 Matt Simpson
 Miscinda Sinisgalli
 John W. Skiratko '66
 Ruth Slack
 Jeanette C. Slenska '56
 Gary '74 & Anne '74 Smith
 Tom & Cathie Spencer
 Clifton L. Spinner, Jr. '87
 Michael J. Spisak '68
 Nathan & Cathy Springer
 Marjorie Squires '67
 Mark & Julie St. Clair

Michael '71 & Theresa '80 Stahl
 Eric Stanbro
 Trenton Starkey
 Thorne Staunton
 Robert '69 & Judy Stechly
 Anne E. Stephens '69
 Timothy C. & Holly Stewart
 Richard Stone
 Samuel Spencer Stone
 Adele Storm '83
 Margaret Storms
 Elizabeth Stritzinger
 Greg & Louise Strong
 Wayne S. Styers
 Greta J. Swann '99
 Douglas & Melesa Swartz
 Chris Swisher '75
 David J. & Lesley Rosier Tabor
 Larry '72 & Jessica '91 Taylor
 Thomas '75 & Carol '74 Terry
 Justin R. Thomas '07
 Alvin & Connie Thompson
 Jared C. Thompson '09
 Tonya Thumm
 Debra Tiano '76
 Letitia Tierney
 Sandy Timok
 Jay Tingle
 Linda Trevenen
 Courtney Trollinger
 Olive L. Turner '51
 Ronald Tweedy
 Robert J. Varlas '71
 Manuel '74 & Mary '74 Velez
 Michael A. & Michelle Venezia
 Justin Viers
 Mark Vieweg
 Kathleen Wack
 LeRoy A. & Eve L. Wallin '70
 Jason Ward
 J.J. Warman
 Mark A. Waselko '96
 Jim & Lynn Watson
 Lynn Watson '72
 Barry E '66 & Patricia A Lohr '68 + Weber

Edward West '77
 Julian Whaley '59
 Mark & Carolyn Whitaker
 Robert C. Wick '68
 Robert + & Susie Wiggins
 Derrick L. Williams '12
 Keith '80 & Linda '81 Williams
 Albert L. Wilson '09
 Denis '75 & Gretchen '73 Wilson
 Samantha C. Wilson '12
 Meghan N. Wiseman '13 & '18
 David Withers '66
 Ron Witt '92
 Jack & Hall Wright
 Rod Yanen '68
 Lee & Julie Yoakum
 Jeffrey M. & Vicki L. Yost
 Randy J. Young '77
 Richard Zuza, Jr. '75

Corporations, Foundations & Organizations:

A & N Campground LLC
 Acer Environmental, LLC
 Aetna Foundation
 Altmeyer Funeral Homes
 Back Alley Gym
 Bad Bird Wrestling Club
 Barnes & Thornburg LLP
 Basil Enterprises Inc.
 Branch Banking & Trust Company - BB&T
 Belmont Carson Petroleum
 Bridgeport Athletic Department
 Brown's Mill LLC
 CAMC - Virology Dept
 Cameron High School
 Charter Kennel Inc
 Coventry Youth Wrestling
 Dirty Dog Tavern
 Doddridge County Board of Education
 Edison High School Band Boosters

Ennis Properties LLC
 Future Business Leaders of America-Phi Beta Lambda, Inc.
 First Choice America
 Community Federal Credit Unio
 Fish Window Cleaning
 Frankeny's Auto Service
 Kingwood Aerie 2391
 Gladiators Wrestling
 Glessner Wharton & Andrews Ins., LLC
 Grand Vue Park
 Hartville Tarp & Awning
 IC Care LLC
 Irvine & Associates, Inc.
 Jackson Foot & Ankle Clinic
 John Marshall High School
 K&A Contracting, LLC
 Kanawha Valley Builders Association
 Lanyi Insurance Agency II
 LEAD
 Marble King, Inc.
 Martins Ferry Music
 Booster Marching Band
 McKinley Carter Wealth Services
 Meyers & Meyers Consultants LLC
 Michael J. Hulit DDS, Inc.
 Nana's Landing, Inc.
 Niekro Classic
 Northeastern Utilities, LLC
 Oak Glen High School
 Order Sons Of Italy Primo Italiano Lodge 2800
 Paree Insurance Centers
 Pathway Growth Partners, LLC
 Paul Enterprises LLC
 Pete's Hotdogs
 Pittsburgh Society of Illustrators
 Plans for Perfection LLC
 Prism Communications
 PSEG
 Red Cobra Wrestling

Academy
 Rick A. Bailey Insurance
 Ripley Paws Veterinary Clinic PLLC
 Roane General Hospital
 SMART Local #33 NCWV
 Snyder Heating and Cooling LLC
 Society of Holy Trinity Group #240
 State Farm Insurance - Chuck Noffsinger
 State Farm Insurance - Daniel McPherson
 State Farm Insurance - Jeff Thomas
 State Farm Insurance - Jerry Parkins
 Steel City Heat
 Strouble Water Hauling, Inc.
 Switzerland Of Ohio Local School District Board of Education
 Tahoma Rubber & Plastics, Inc
 The Fluor Foundation
 The Hopewell Diner
 Tighe & Cottrell, P.A.
 Treasured Memories Community Funding
 UHS Choral Boosters
 Valley High School Band Boosters
 Waterway Furniture Co.
 Waves Equipment Source
 Waybright Funeral Home, Inc.
 Wayne Crouse, Inc.
 West Texas Roadhouse
 Wheeling Hospital Auxiliary
 Wheeling Nailers Hockey Club
 Wheeling Symphony Society, Inc.

GOLD & BLACK

GOLD & BLACK CLUB

\$1-\$99

Individuals:

Robert A. & Leslie B. Ahrens
 Richard Albrechet
 Mary Beth Allan '85
 Danika J. Allen '17
 Juanita Alvarado
 Will Amberger
 Bill T. Anderson '70
 C. Eric Anderson '91
 Michelle Anderson
 Vincenzina N. Anderson '15
 Asantewa Anyabwile
 Janet Arehart
 Frieda Augsburg '64
 Robert K. Ault
 Stephen P. Austin '70
 Greg & Carla Babe
 Brian & Courtney Back
 Sue Ann H. Backus '70
 Kelly Young Baker
 Kerry J. Baker '00
 Sharon Ann Baker '76
 Joshua & Rebecca Baldwin
 Matt Ball
 Magdaline Balsley
 Jake Barclay
 Jane Barrett
 Ethan Basile
 Hunter Bates
 Abbey Bauer
 Michelle Bauer
 Christopher & Beth
 Baumhoer
 Olivia Baumhoer
 Benjamin C. Bear '06
 Melissa S. Beckert
 Brent Belknap
 Elizabeth Bentz
 Thomas C. & Janis G. Berry
 Barbara J. Beveridge
 Olivia L. Blazer Billiter '16
 Fred & Marianne Billotto
 Fred & Rena Billotto
 Joseph Bitonti
 Michael '97 & Charity '99
 Blackwell
 Cody R. Bland '15
 Michael Blatzer '16

Hayden M. Blazer '18
 Sue Blevins
 Paul & Kathy Boron
 Nick Bova
 Edward '71 & Sara Bowman
 Dan & Sandra Boyd
 Stephen '94 & Rebecca
 Boyd
 Eugene '80 & Patty Briggs
 Lisa J. Briscoe '79
 Robert & Karen Brock
 Sonya Bromberek
 Stephani D. Brown '94
 Connor Brummett
 Phil Brummett
 Stephen P. Bucher '71
 Steven Buck
 Lisa Bucon
 Jenna L. Bugaj
 Lindsey A. Bugaj '09
 Rebecca Bugaj
 Melinda A. Burkhart '80
 Judy Busick
 Callia Byard
 Trina Byard
 Patricia J. Byrd '75
 Melissa A. Carpenter
 Michael D. Carpenter '13
 William & Nancy Carpenter
 Bill Carroll
 Abbigayle Carte
 Neil B. & Karen K. Cash
 Becky Castiglione
 Bonnie S. Chambers
 Bruce & Kim Clark
 Kollin Clark
 Monette E. Clarke '62
 Robert & Catherine Clarke
 Cassie Clayton
 Maria D. Clyde '16
 Ceara Coates '18
 Jon '66 & Vivian '68 Cochran
 Vivian Cochran '68
 Jason Coleman
 David Colley
 Matthew Comer
 Brian D. '01 & Stephanie A.
 '02 Conlon
 Alec Cook
 Heather Cook

Kyle J. Cook '13
 Nancy Coons
 Stephen & Marlene Cordray
 Mike & Michelle Coss
 Joe & Marsha Craycraft
 Terry & Pamela Rae Crislip
 Craig M. Crow '02
 William G. Culan '71
 Michael R. Cunningham '74
 Craig M. Curry '97
 Sandra E. Czernek
 Linda Singer Dacar
 Alex Dague
 Faye Dail
 Don Dale
 Sharmian Daub
 Aaron Davis
 Bridgette Dawson
 G. Richard Deenis '89 Meta
 M. Lasch '76
 Michael & Denise DeSan
 Christopher Deutscher
 Paul & Suzanne Diehm
 Maggie Dillon
 Fred & Karen Doepken
 Melanie Ann Donofe '88
 Bernadine Dorich '67
 Jarod & Miriam Douglas
 Rebecca Drake
 Sara A. Drake
 Brynn Driscoll
 Conor Driscoll
 Keegan Driscoll
 Joseph '69 & Julie (Wander)
 '70 Dudas
 Dorothy V. Dudzik '88
 Earl P. Duffy '77
 Virginia Dulany
 James & Lil Eicher
 Bernie & Angie Elliott
 Joseph & Debra Eshbaugh
 George '74 & Diane '75 Eskra
 Brice Everson
 Paul Falck
 Kevin & Kellie Fausnaugh
 Anthony & Jennifer Favro
 Jason A. Fazio '09
 Michael Ferlic
 Michael T. Ferro '73
 Pat Ferry '63

Corrine Fetsko
 Kenneth & Patricia Fetsko
 Luke Fetsko
 Nathan Fetsko
 Judi Ficca Ickes
 Tammie Ficca Moore
 Treasure Fields
 Chris '02 & Ginni '03 Findley
 Mark & Cynthia Fischer
 Cindy Fluharty
 Seth Fluharty
 Linda Singer Fodor
 Daniel Fodor
 Gerald '92 & Lori '92
 Fornwalt
 Susan Forrester '76
 Brad Forshey
 Alexandra Franke '18
 Michael Frazier '80
 Sharon D. Friend '67
 David J. & Beth A. Frstick
 Mary Gallo '64
 Cynthia Galloway
 Benjamin Games
 Ellen Gano
 Christopher M. Gibbs '08
 Jordan Gibson
 Ralph Gilbert
 Jon Glenn & Debbie
 McGuire
 Bill '84 & Angel '82 Glitch
 Lexy Glover
 Mark Glover
 Keith Goldman '91
 Andrew '80 & Jeri '79 Gonta
 Caitlin Goodale-Porter
 Grant Gough
 Sandra H. Grahame '63
 Lawrence R. Gress '66
 Chad Grubb '18
 Jeanette Gryskevich '75
 Becca Gulino '87
 Annette Guthrie
 Connor Guziar
 Cassandra N. Hackbart '13
 Daniel Hague
 Edward Harless
 Karen Harrigan
 Zach Harrigan
 Ethan Harris

Dolores Dee Harvey
 Dalton Head
 Mareesa Hedger
 Robert Hedger
 Hayden Heiserman
 John Heiserman
 Jerry & Pam Hennen
 Jordanne Hensley
 Kiersten Hensley
 Christopher J. Hester '15
 Hunter Hickman
 Julia Hill
 William N. Hillyard '01
 Travis P. Hinkle '07
 Aric Hodnett
 Randall A. Hollingshead
 Chris Holm
 Odessa Hores
 Mike Horton
 Jacob Howlett
 Aaron & Courtney Huffman
 Edward E. Hughes III '74
 Erica R. Hupp
 Chris Hutcheson
 Ronald & Debra Irwin
 Summer Irwin
 Scott Jackson
 Joel Jarrett '18
 Josephine Jarrett
 Marcus Jean-Baptiste
 Michael C. Jebbia '03
 Gayle Jesse
 Michael & Gayle Jesse
 Carol L. Johnson
 Robert L. Johnson '83
 Brent J. Jordan '11
 John '85 & Lisa '84 Jordan
 Brian '78 & Julie Joseph
 Ken Kahrs
 Lora Kalwarski
 Moonjung Kang
 Alan Kendrex
 Drake Kendrex
 Mary Lou Kent '72
 Richard P. Kestermont '70
 James Kilmer
 Jasmyn M. King
 Jaclyn M. Kitts
 Julie Kizlik
 Jim & Marilyn Kleeh

Ross Klick '69
 Corey M. Klug '15
 Erica Knowlton '88
 David Kosar
 Julia Krisiak
 Bob Kubik
 Lincoln Kyle
 Maxwell Lacey
 Dorian Lacey Garita
 James LaRowe
 Cole Garrett Laya
 Richard R. & Demaris L.
 Leblanc
 Vicki Lee
 Brian W. Leggett '11
 Lee & Becky Lemke
 Louis Leonhart
 Debra A. Lett '82
 Charles M. Leusner '69
 Richard P. Lizza
 Timothy Locksmith
 Chase Logan
 Rod Lone
 Christopher Lubic '81
 Clint & Ashley Lucwy
 Mary Ellen Lurty '60
 Samantha J. Lytle '14
 Judy Mackorell '68
 Chris & Lisa Madynski
 Mark Maldonado
 Nicholas & Cheryl Maltese
 Jean Mann '54
 Kristin Marino
 Barbara Guhl Marken '69
 Alexis Martin
 Shannon Martin
 Vishakha Maskey
 Sherri A. Mason
 Jessica Mathey
 Gary '73 & Carolyn Matteson
 Sam Mattingly
 Martyna Mazusiak
 John Matviko & Sandra
 Czernek
 Parker Mazik
 Brigitte Mazure
 Daine M. Mcafee
 Shildes Mccaslin
 Ann McCormick
 Paul & Marilyn McCoy

HONOR ROLL OF DONORS

Shown here is a listing of the many generous individuals, corporations, foundations, and organizations who contributed to the West Liberty University Foundation between July 1, 2019-June 30, 2020.

GOLD & BLACK (con't)

Rebecca McDowell '16
Mary Jo McGinley '78
Daniel J. McKeever '69
Kelsey A. McKinney '13
Ellen Jane McNinch '73
Vince '82 & Denise '83 Mehl
Danielle Mehlman-Brightwell
S. Richard Mellon
Kara Messner
Edward S. Mihalovich '76
Mark Miller
Rhonda M Miller
Sharon L. Miller '68
Keith Mills
Herb '89 & Ashlea '04
Minch
Judith D. Minder '63
Gust W. Mitchell '64
Katherine Moio '17
Alexis M. Montes '16
Andrew C. Montes '13
Anthony '09
Linda K. Monti '74
Amy M. Moore
Chance Morgan
Chase Morgan
Julia A. & Mary Leslie
Morton
Victoria E. Mounsey '98
Marshall Mounts
Jeff Mucha
James Mull
Marilyn Mull '69
Matt Mull
Richard Mull
Susan Mullins
Erin Murphy
Ken & Jill '15 Murray
Laura Musilli
Evan K. Newman '15
Ernest M. Nicholas Jr. '73
Rebecca Nolder
Chuck Novosel '68
Samaria Oiler
Mary Kay Olashuk '87
Jean W. Oliver
Craig & Terri Ollom
Alyssa Padula
Daniel Page

Maricris Pangilinan '18
Graham A. Parks '15
Christopher Pashke
Christina M. Pauley '15
Glen & Marcia Pawloski
John Penn
Timothy Pennybacker '94
Jeff & Jennifer '96 Pfister
Beth A. Phillips
Katherine Phillips
Ashley Ponsetti
Brenda Poynter
Thomas Poynter
Sara Presutti
Bill '72 & Jane Price
Alex J. Proger '11
Nancy L. Quigley '97
Bryan & Renee Ramsay
Ryan Randenburg
Emily Reams
Amy Reddy
Chelsea Reed
Jackie Reed
Patty Reed
Kathy R. Rhodes
Zachary Rhodes '19
Nicholas Robertson
Michael Rodgers '70
Christian Rodriguez
Daniel Romero
Joseph Ross '90
John R. Rovison '74
Michelle L. Russell '19
Barbara J. Ruthers '70
Laura Jane Sackett
Anthony P. Sako '15
Philip Salvatori '81
Daniel & Barbara Samples
Zac Samson
Riley Schenk '20
Kevin & Amanda Schmidli
Babe & Becky Schmitt
Carl & Darla Schneider
Donna Schuler
Sydney Schumacher
Austin T. Schwandenberger
Michael '78 & Marilyn '78
Schwartz
Patrick Sconish

Ryker Sconish-Thomason
Natalie A. Simich '08
Cassidy Simonson '19
Justin Simpson
George & Nancy Singer
Cheryl Sipos '72
Frederick R. Sistilli '73
Jeff & Jennifer '96 Pfister
Steven Slack
Anne-Marie Smith
Chad Smith '93
Danielle Smith
Karolyn Smyth
Mark '99 & Melissa Smith
Nicholas & Marlene Smith
Marcella Snyder
Michael Snyder
Drew Songer
Joshua Sparks
Joe M. Spreainde
Eric Staffileno
Robert L. & Mabel M.
Stallings
Jacob Stephenson
Andrew Stimmel
Renee N. Zelinski Storm '08
Amy L. Story
Patricia A. Stough '78
Bill Strickler
Kevin Stryker '19
Dan Studenic
Alexia Sunderman
Sara A. Sweeney '06
Francine Tabor
Amanda Tamplen '19
Eli Tate
Susan E. Tate '81
Christopher '07 & Brittany
'08 Taylor
David '70 & JoEllen '86
Taylor
Teresa A. Taylor '84
Spencer Thomas
Maribeth Thompson
Rick & Michelle Thorp
Brock Thumm
William A. Tighe '63
Cam Timok
Mark Timok

Virginia Timok
Roger Tipton
Jeffrey E. Toia
Diane Trifonoff
Jacob '15 & Sara '16
Trifonoff
Janet Hoffa Tuerff '58
Pamela Turley
Woodrow Turner
S. Michael & Romaine '80
Turrentine
Lynn '85 & Karen Ullom
Mark L. Van Dyke '83
Melissa A. Voytek '96
Kayla L. Waialae '17
Laura A. Waialae '14 & '18
Beth Wallace
Jay R. & Kathy J. Wallace
Deanna B. Warco '75
Ray & Sandra Ward
Debra Warmuth
Walter '80 & Susan '81
Warren
Adam & Erika Weidner
Mike Weidner
Bill & Debbie West
Dean White
Joseph White '79
Marlene Whitehair
Craig & Erin Whitman
Marlene A. Wiley '73
Weldon P. Williams '95
Robert Williamson '81
Emily Wilson
Justin Wilson
Melanie Wood
Bryan '99 & Carla Woodford
Brian Wronikowski
John Wronkowski
Todd A. & Melissa R. Zacour
Maureen Zambito

**Corporations,
Foundations &
Organizations:**
Abbey's Restaurant &
Lounge
Alioto's Restaurant
AM Architecture
AmazonSmile Foundation
C S Loy Construction LLC
Central Catholic High
School Student Council
Franks Hair Quarters
Loy Rentals
McKinniss & Associates LLC
Pennybacker's Lawn
Service, LLC
Pride Cleaning & Concierge
LLC
Richardson Copy Concepts
United Way of Alabama
Warwood School
WLU Dental Hygiene
Department

We have done our best to provide accurate information in the lists above. Please accept our apology for any errors or omissions. If you have any changes, corrections, or questions, please call the WLU Foundation at 304.336.5635.

EMERGENCY FUNDS FOR STUDENTS AFFECTED BY COVID-19

Throughout the summer and fall the WLU Community came together and raised over \$72,000 for the Helping Hilltoppers Campaign. These funds have already helped over 210 students facing extreme financial challenges due to COVID-19 remain enrolled at West Liberty University. We are so grateful for this outpouring of support.

\$72,000+
raised



210+
students
awarded funds



129
donors

As the academic year progresses, the necessity for additional support for students remains critically evident. You can learn more or make a gift at wlufoundation.org/helpwlu or by calling us **304.336.5635**.

A special thank you to our generous donors who gave \$1,000 or more to the Helping Hilltoppers Campaign.

- Barnes & Noble College Bookstores
- Tara Beiswenger '88
- John Bonassi '69
- William Brenner
- Richmond Glover '63
- Janet Honecker
- Richard Lucas '86
- Pittsburgh Alumni Chapter

Helping
HILLTOPPERS
West Liberty University Foundation



ADOPT THE BANDS SPOTLIGHT

Hilltopper Bands



The WLU Foundation would like to extend a special thank you to our Adopt the Bands Campaign donors, especially our presenting sponsor, Alco Fence Co. of Central West Virginia!

LEXIE KRYAH

Hometown: Shadyside, Ohio

Year: Junior

Major: Elementary Education

Instruments: Trumpet and Steel Drum

Career Goal: Work as an elementary school teacher locally and help with the school's theatre and music programs.

Q&A WITH RECIPIENT LEXIE KRYAH

Q. Why did you chose to attend WLU?

"The Hilltopper Bands made a large impact in my decision to come to West Liberty, especially being able to take part in the program while still majoring in elementary education."

Q. Which bands do you play in?

"I'm involved in several ensembles: Marching Band, the University Band (our community and concert band), Wind Symphony, World Music Ensemble and the Steel Band."

Q. What is your favorite part of being a member of the Hilltopper Bands?

"Our band is like a close family. I found a place where I belong, and I know I can always come back to these people later in life."

Q. Anything you would like to add?

"I'm so thankful for our donors to the Adopt the Bands Campaign, our bands continue to grow every year, and we couldn't do it without them!"

ENDOWED FUNDS

Alfred R. de Jaeger Choral Scholarship	Eileen Reinbold Endowment for Kelly Theater	Kenneth R. Nodyne Scholarship	Maintenance Fund
Barbara Dowgialo Beck Scholarship	Elmer F. Dietz Football Scholarship	Larry V. and Paula K. Moore Scholarship	Raymond G. Hughes Memorial Fund
Bill Dolan Scholarship	Eugene Crutchfield Memorial Scholarship	Lawerence H. Talley Science Scholarship	Robert Godfrey Accounting Scholarship
Bucks for Brains Fund	Executive Development Forum Faculty Travel Fund	Leah Gracey Campbell Math. Ed. Scholarship Trust	Robert L. & Nancy C. Loew Memorial Scholarship
Caldwell Scholarships	Florence Irene Nesbitt Scholarship	Linda S. (Forbes) Edwards Dental Hygiene Scholarship	Robert L. Levenson Memorial Scholarship
Carol Frum Scholarship	Florida 250 Club	Louis A. Brescel, Jr. Scholarship	Roland E. "Rollie" Williams International Fund
Catharine H. Dorer Dental Hygiene Scholarship	Forrest L. Mellott Memorial Football Scholarship	Lula K. Collins Memorial Scholarship	Sara Jane Fritz Memorial Scholarship
Charitable Gift Annuities	Gary B. Inclan Fund	Maria Cigalle-Sontag Scholarship	Sargent Dental Hygiene Scholarship
Charles B. Davis III Scholarship	George and Dolly Grim Memorial Scholarship	Marty Adams Scholarship	Schnitzler/Hartenstein Scholarship
Clyde Thomas Scholarship	George and Mildred Polak Scholarship	Mary Casey Bates Elementary Education Scholarship	Silver Bears Scholarship
Colonel Harold D. Jefferson Fund	Guy H. & Mary Ann West Business Scholarship	Mary Jane Ritson Scholarship	Staff Employee Scholarship
David T. Javersak College of Liberal Arts Scholarship	Hall of Fame Athletic Scholarship	Mary K. Ahrens Scholarship	Stella Caravas-Misoyianis Scholarship
Donald L. Pahl, Sr. Music Scholarship	Hauch Family Scholarship	Meagel Charitable Trust	Technology Fund
Donald W. & David J. Levenson Foundation, Inc. Science Fair	Hazel Jane Gilleland Scholarship	Meagel Scholarship	The Cardamone Family Scholarship in Memory of Gregory L. Cardamone
Donald W. Jones Music Scholarship	Hazlett A. Cochran Scholarship	Men's Basketball Endowment	The David L. Waples Football Endowment
Don L. & Shirley Seamon Memorial Nursing Scholarship	Hein Staff Recognition Award	Mildred Kaetzel Biggs Dental Hygiene Faculty Enrichment Music Scholarship	The Eleanore V. Golden Scholarship
Donna Waugh & Bruce Berlage Dental Hygiene	Horne Family Honors Scholarship	Nancy Smith-Harris '36 Scholarship	The Mary Elizabeth Harrison Reiner Prof Dev End for Health Sciences
Doris Lake Jones Scholarship	Howard Herrington Fund	Nelson Cain Scholarship	The Shimp Brothers Scholarship
Dorothy Long Nursing Scholarship	Hughes Lecture Series	Norman C. Winters Memorial Scholarship	The West Virginia Society of Washington, D.C. Book Scholarship
Dr. Clyde D. Campbell Scholarship	Investment Club	Nursing Scholarship	Valerie Renee Callas Scholarship
Dr. David G. Edwards Biology Scholarship	Jack Adams Hilltopper Athletic Club	Pamela Beltz Lyons Scholarship	Vernon D. "Mike" Riemer Memorial Scholarship
Dr. David G. Edwards Biology Scholarship	James G. Marsh Memorial Scholarship	Patricia Zapka Gracey Scholarship	West Liberty University Foundation Fund
Dr. E. J. Joseph Dental Hygiene Scholarship	John C. Shaw Scholarship	Paul N. and Helen P. Elbin Library Fund	William S. & Lee Weeks Abraham Music Scholarship
Dr. Edward C. Wolf Music Scholarship	John W. Carenbauer Baseball Scholarship	Paul Wm. Hughes Fund	Wrestling Endowment
Dr. John P. McCullough Scholarship	Joseph A. Bartell Memorial Scholarship	Peggy Lydick McCarroll Dental Hygiene Scholarship	WLU Bookstore Scholarship
Dr. Richard G. and Rebecca B. Stevenson Nursing Scholarship	Joseph E. Davis Scholarship	Pete Holloway Scholarship	
Dr. Thomas J. Babb SBA Scholarship	Judith Bartell Paesani Vocal Music Scholarship	Peter & Jingsi Sontag Scholarship	
Eastern Star Nursing Scholarship	Kathleen A. Pavlisko Baseball Scholarship	Project BEST Scholarship	
Edna M. Goodnight Memorial Scholarship	Kathryn T. Neuman Scholarship	Protestant Campus Ministry Endowment	
Eileen M. Reinbold Graphic Design Scholarship	Kenneth B. McMillen Fund	R. Clark Morton Scholarship	
		R. Emmett Boyle Conference Center	

NON-ENDOWED FUNDS

3D SBA	Cory Hewitt Memorial Scholarship	Jack Schuetz – State Farm Student Athlete Scholarship	SPA Fund
48 Hour Film Fest	Council for Exceptional Children	Jeri Dailey Mathematics Scholarship	Student Activities
Acrobatics & Tumbling	COVID Emergency Fund	John Hennen Scholarship	Student Government Association
Al & Thais Blatnik Scholarship	Criminal Justice Program	Kelly Theatre	Study Abroad
Alumni Association	Cross Country & Track	Kenneth & William Wright Scholarship	SURE Project
Alumni Park Building Fund	Cross Country & Track Scholarship	Kenneth Harris Scholarship	Teachers Grants
Andrew & Linda Pasden School of Business Administration Scholarship	Crutchfield Family Fund	Lary Loew Golf Scramble Fund	The Performing Theatre Artist Scholarship
Annual Campaign	C. Tim Meighen Music Scholarship	Life Insurance Fund	The Trumpet
Appalachian Biodiversity	David Nugent Memorial Trust	Liberty Oaks	Theatre Student Travel
Arnett Hall Renovations	Dental Hygiene Program	Maintenance Department	Thomas Hostutler Memorial Scholarship
Art Department Scholarship	Department of Health Sciences	Martha Hudson Goodrich Scholarship for Education	Topperstation
Art Student Exchange Program	Department of Natural Sciences and Mathematics	Masters in Arts Education Scholarship	Tri-State Dental Hygienists' Association Scholarship
Art Therapy	Department of Natural Sciences Scholarship	Men's Soccer	Tri-State Tax Institute
Athletic Practice Facility Fund	Donald S. & MaryAnne Bruno Education Scholarship	Message Me	Vance Memorial Presbyterian Church
Athletic Training Club	Dr. John P. McCullough Staff Service Award	Music Department Fund	College Community Chorus Fund
Band Fund	Dr. John P. McCullough Professional Award	Nearby Nature	Veterans Scholarship
Barnes & Noble Scholarship	Edgar Martin Men's Tennis	Nick Baker Scholarship	Wall of Honor
Baseball Field Renovation	Ellen Riggs Neidermeyer Award for Excellence in Nursing	Nursing Program	Weight Room
Baseball Scholarship	Entrepreneurship	Opera Fund	West Family Athletic Complex
Benedum Fluency Grant	Etiquette Dinner	Pallottini Memorial Scholarship for Outstanding	WGLZ
Beth Salatino Memorial Scholarship	FBLA Phi Beta Lambda	Passionately Vocal	Wheeling District Dental Society Scholarship
Bucky Kopf Football Fund	Football Stadium Renovations	Professional Promise in Dental Hygiene	WLU Baseball
Campbell Hall	Frank Family Scholarship	Physician Assistant Program	WLU CFO Fund
Campus International Community	Friends of the Paul N. Elbin Library Golf	Physical Education Major's Club	WLU Cheerleaders
Center for Arts & Education	Graduate Education	Pittsburgh Alumni Chapter	Women's Basketball Legacy Fund
Children's Literature	Graphic Design Department	Professor Charles B. Davis Jr. Memorial Scholarship	Women's Golf
Choir Tour Fund	Gray Williamson Legacy Fund	Protestant Campus Ministry	Women's Softball
Coach Grall Fund	Greek Life	Psychology Program	Women's Tennis
College Fair	Health & Human Performance	Restricted Gifts	Women's Volleyball
College of Arts & Communications	Helping Hilltoppers	Robert Villamagna Scholarship	Women's Soccer
College of Business	Hilltop Players' Patron	School of Professional Studies	Women's Tennis Scholarship
College of Education & Human Performance	Hilltopper Athletic Club	Scot Malson Nursing Scholarship	Wrestling
College of Liberal Arts	Hoop Club (Men's Basketball)	Shaw Hall Renovations	Zach Amedro Football Scholarship
College of Science	Jack Adams Fund	Social Work Program	Zeno, Pockl, Lilly and Copeland Accounting Scholarship
Collegiate Alumnae of Wheeling Scholarship	Jack Hattman Scholarship		Zoo Science Student Fund
Community University			
Constance Stewart Health Sciences Scholarship			

EXPLANATION OF FOUNDATION FUNDS

Listed below are the types of donations accepted and various funds held by the West Liberty University Foundation, Inc.

TYPES OF GIFTS

RESTRICTED GIFTS

Donations made to the West Liberty University Foundation, Inc. with a specific purpose stated by the donor.

TYPES OF FUNDS

NAMED ENDOWED FUND

A named endowed fund can be established to provide scholarships, support a professorship or chair in a particular academic area, or support another purpose based on the interest and intention of the donor. An endowment requires that the principal remain intact in perpetuity, or for a defined period of time, or until sufficient assets have been accumulated to achieve a designated purpose. West Liberty University Foundation, Inc. requires a minimum initial gift of \$25,000 to establish an endowed fund. Named endowed funds are listed on an annual basis in certain WLU Foundation publications. Currently the Foundation has a total of 116 Endowed Funds.

UNRESTRICTED GIFTS

Donations made to the West Liberty University Foundation, Inc. support the WLU Foundation Scholarship Program and areas of greatest need, which are identified by the WLU Foundation Need Request Proposal Process.

TEMPORARILY ENDOWED FUND

A temporarily endowed fund with a balance of less than \$25,000 may be established with the understanding that the donor/s or governing body intends to fund at a minimum \$25,000 level and that no income generated by the gift principal will be distributed until the \$25,000 minimum principal balance has been achieved. If not fully funded within five years, the temporarily endowed fund will be considered part of the Foundation's general endowment.

NON-ENDOWED FUND

A non-endowed fund is a fund held by the Foundation designated for a specific use over a shortened period of time. e.g.; Organization accounts; Study Abroad; Capital Projects, etc. The foundation currently has a total of 143 Non-Endowed funds.

For more information or to establish a fund in the West Liberty University Foundation, Inc., contact:

ANGELA ZAMBITO HILL, EXECUTIVE DIRECTOR

West Liberty University Foundation, Inc.
208 University Drive, CUB #126
West Liberty, WV 26074
304.336.5635 or 304.281.0118

THANK YOU!

WLU FOUNDATION

208 University Drive
College Union Box #126
West Liberty, WV 26074

Students featured on cover:

- Wisdom Jenkins, WLU Football
- Markell Oliver, Barbara Dowgialo Beck Education Scholarship
- Lexie Kryah, Hilltopper Bands
- Chase Morgan, WLU Wrestling
- Kailey Morgan, Diane B. Gongaware Business Scholarship

