

SAP ERP System

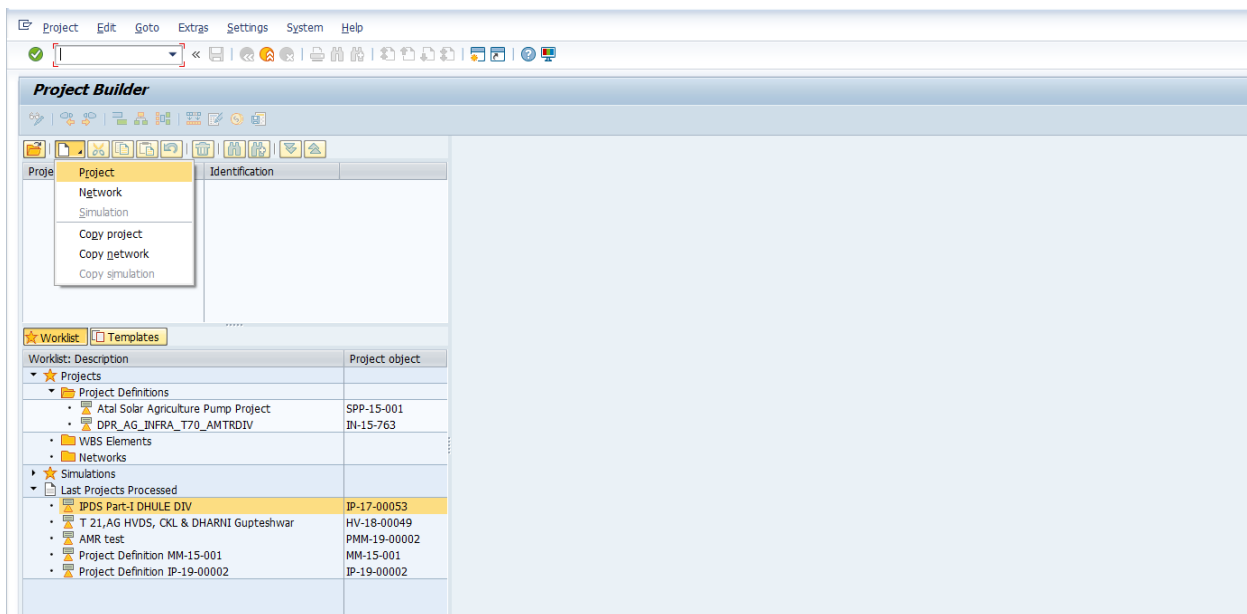
1. Double-click on SAP Logon icon to open SAP ERP system.
2. SAP User Credentials will be used for login to system
3. Authorized user will create Project for Infrastructure Development work for release of New Connections.
4. Authorized user will create PO (Purchase Order) i.e. Work Order for Infrastructure Development work for release of New Connections.

Guidelines for creation of Project in ERP for Infrastructure Development for New Connection scheme

Step1. Creation of Project in PS module of SAP ERP system

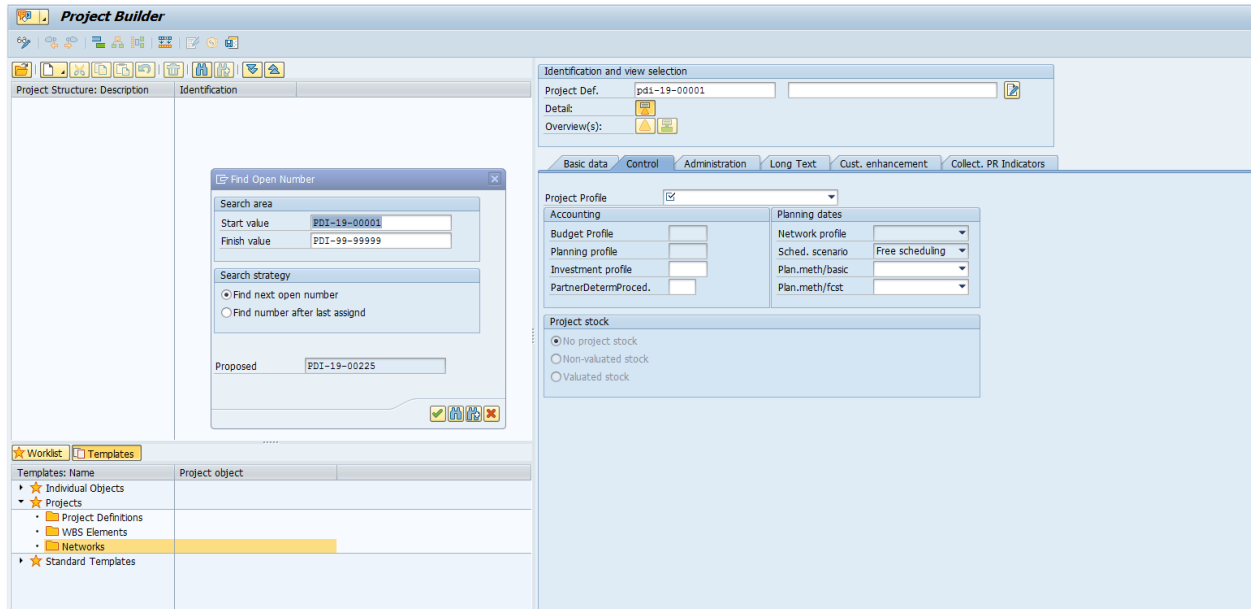
Creation of Project: CJ20N

1. Run T-code CJ20N
2. Click on “New” to create new Project

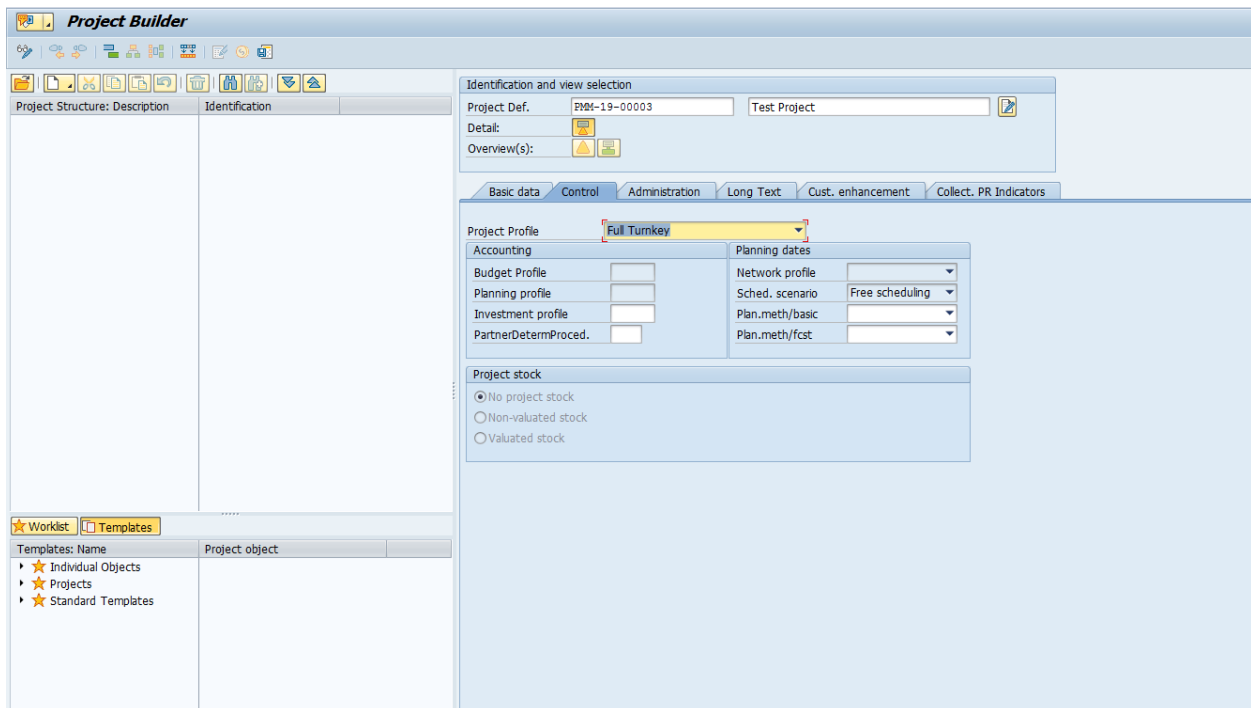


3. Enter project no as per following format and click on search option to select next open serial no.





4. Enter Description and select project profile.



5. Enter Plant and profit center

The screenshot displays the SAP Project Builder interface. The main window is titled "Project Builder" and shows the "Identification and view selection" section. The project definition is "PDI-19-00225" and the detail is "NSC". The "Overview(s)" section shows a warning icon and a refresh icon. The "Basic data" tab is active, showing the following fields:

Status	
System Status	CRID
User status	CRID

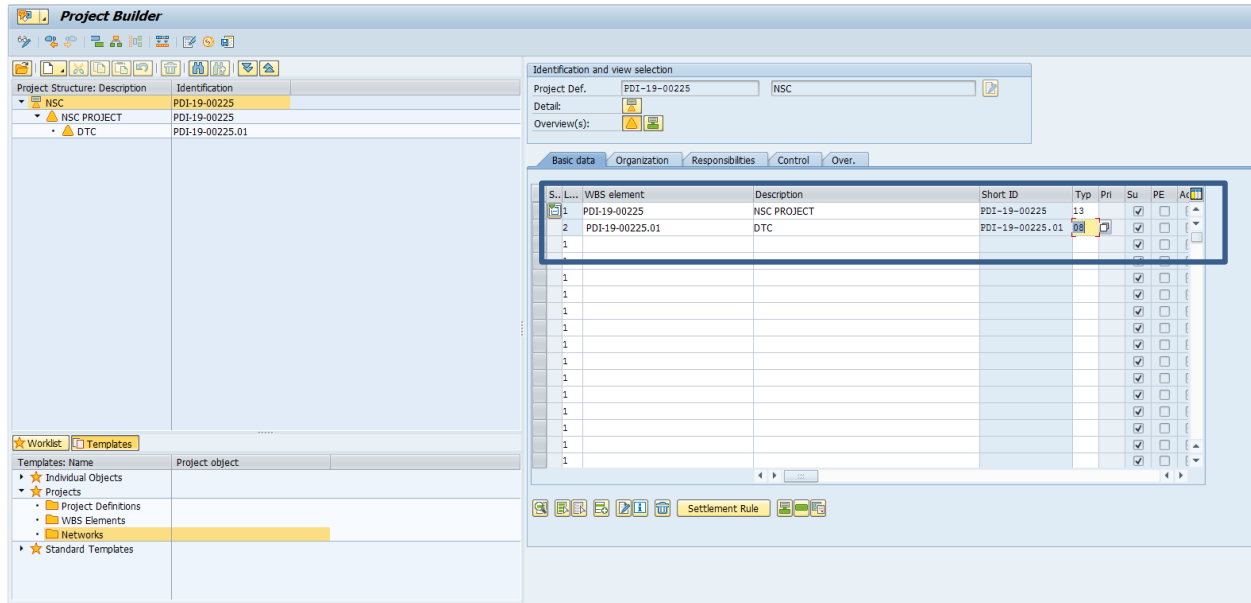
Project coding mask	
Screen	PDI-00-00000.00.00

Responsibilities	
Tender Floater	
DPR Approver	

Organization	
CO area	1000
Company code	1000
Plant	D675
Profit Center	3064
Proj.currency	INR

Dates	
Start date	06.11.2019
Finish date	
Factory calend.	IN
Time unit	DAY

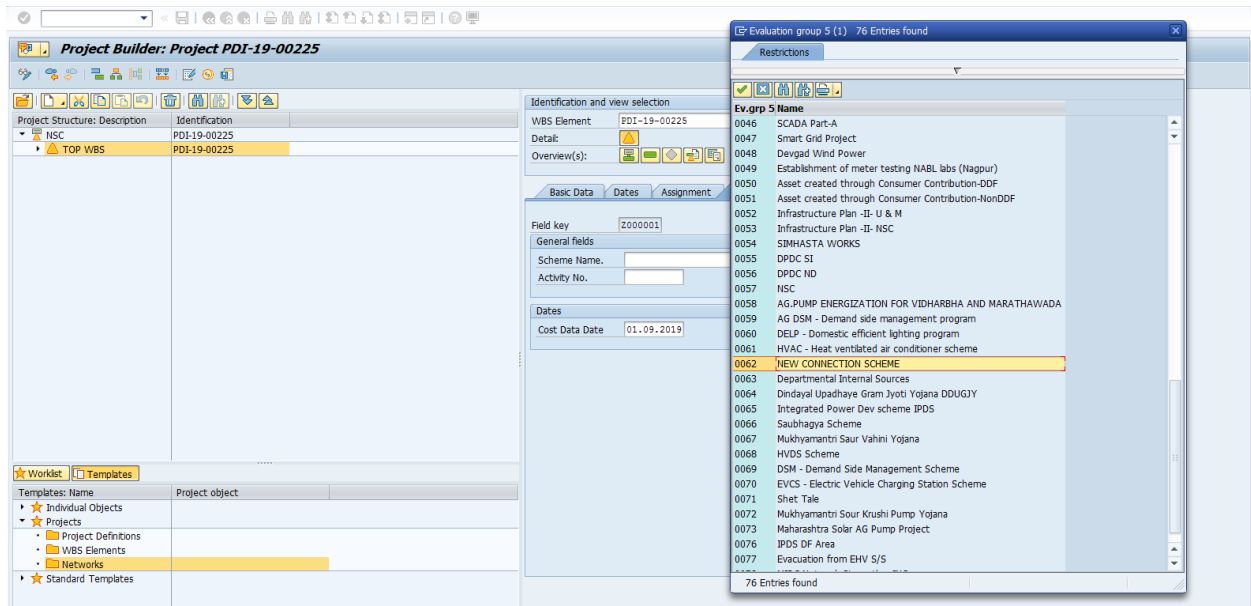
The left sidebar shows the "Worklist" and "Templates" sections. The "Templates" section is expanded to show "Project object" and "Projects". The "Projects" section is further expanded to show "Project Definitions", "WBS Elements", and "Networks".



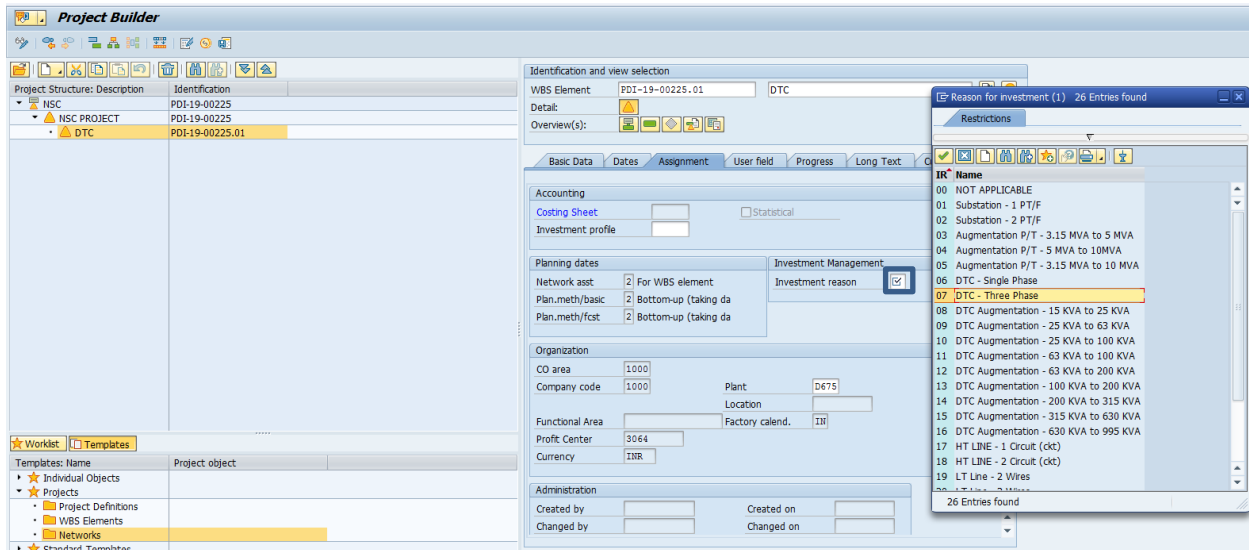
In this way add second level WBS elements for projects as per requirement serially.

8. Click on TOP WBS and Go to “User Field” to enter Scheme Name as “(0062) New Connection Scheme” and Cost Data Date.

Enter scheme name from search option.



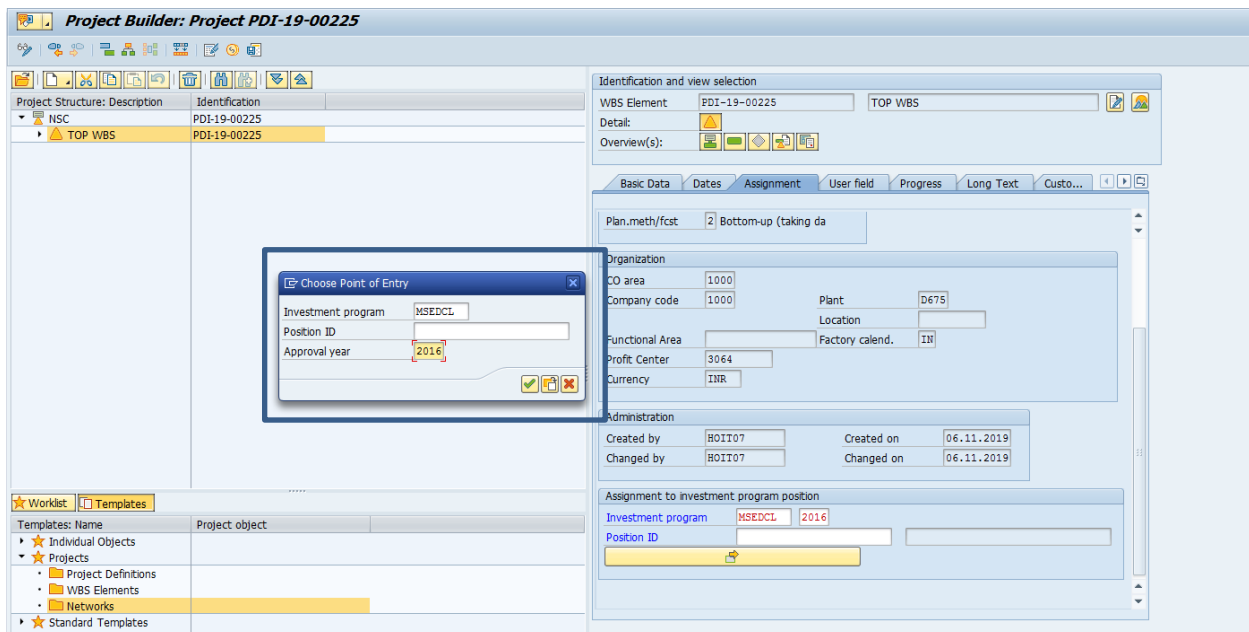
9. Go to “Assignment Tab” of each WBS and enter Investment Reason for all WBS and save the Project.

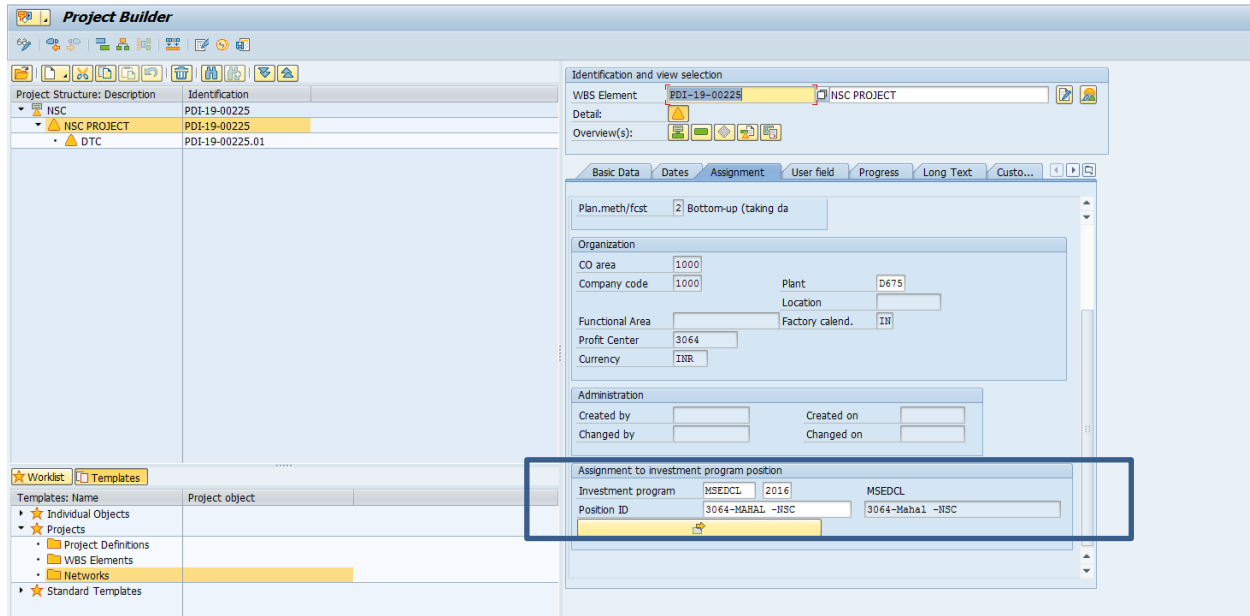


Also Assign Project Type for each WBS in “Basic Data “Tab if it is not maintained at the time of WBS creation.

10. Click on TOP WBS and go to “Assignment Tab” and Assign Investment Program as per SCHEME and PROFIT CENTER with respect to year. Please enter Approval Year for investment program.

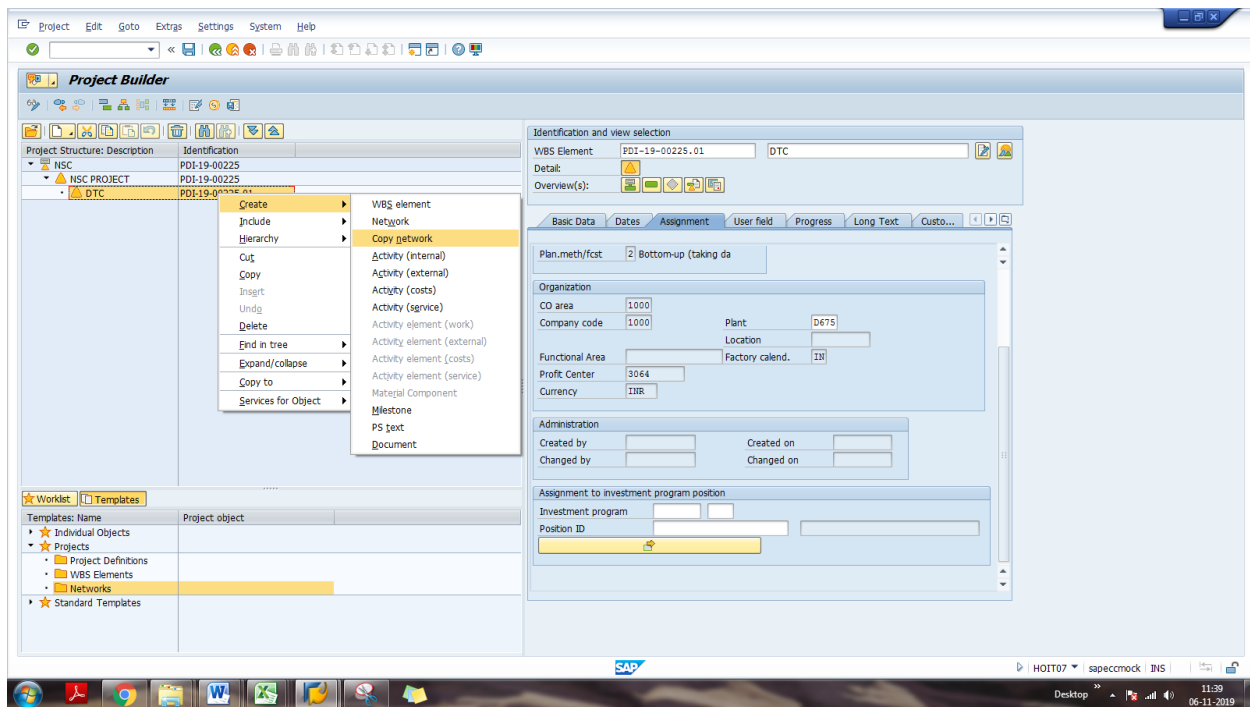
Save the project.



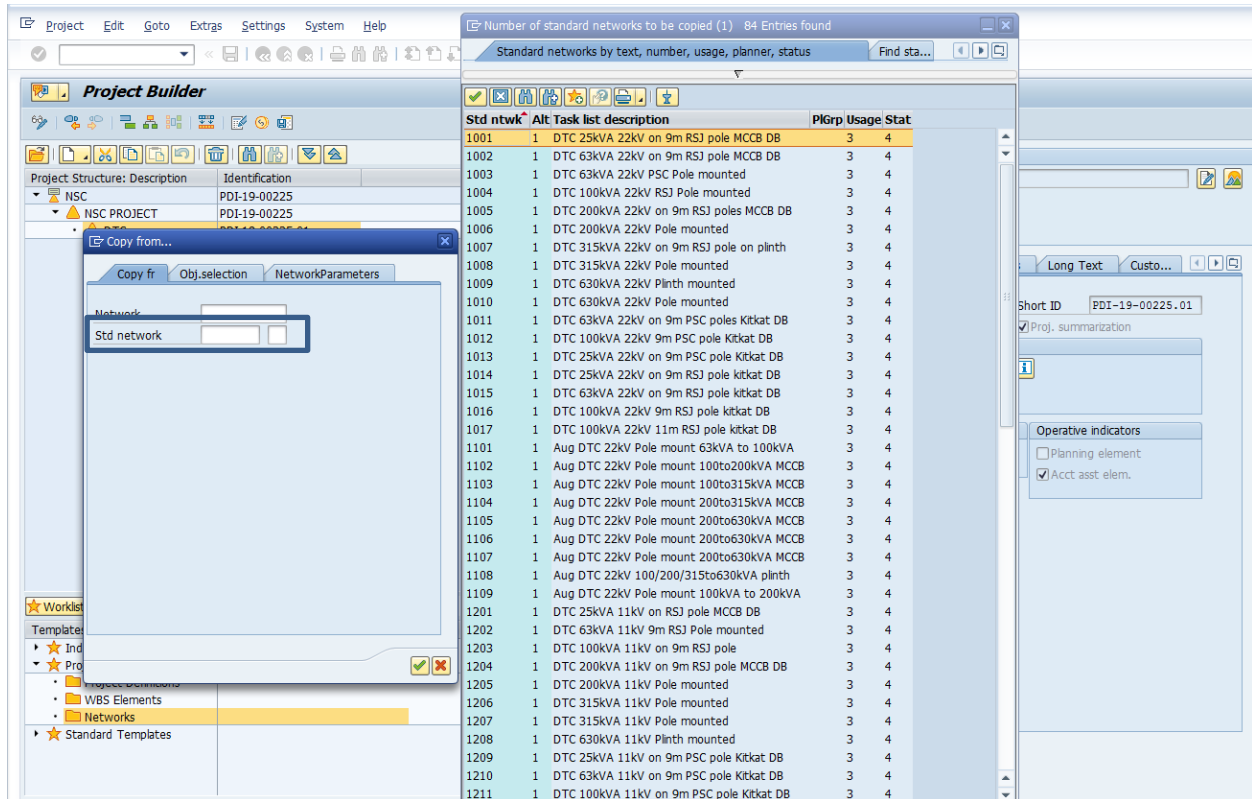


11. Create only one network and one activity for each WBS elements in project for Full Turnkey Profile.

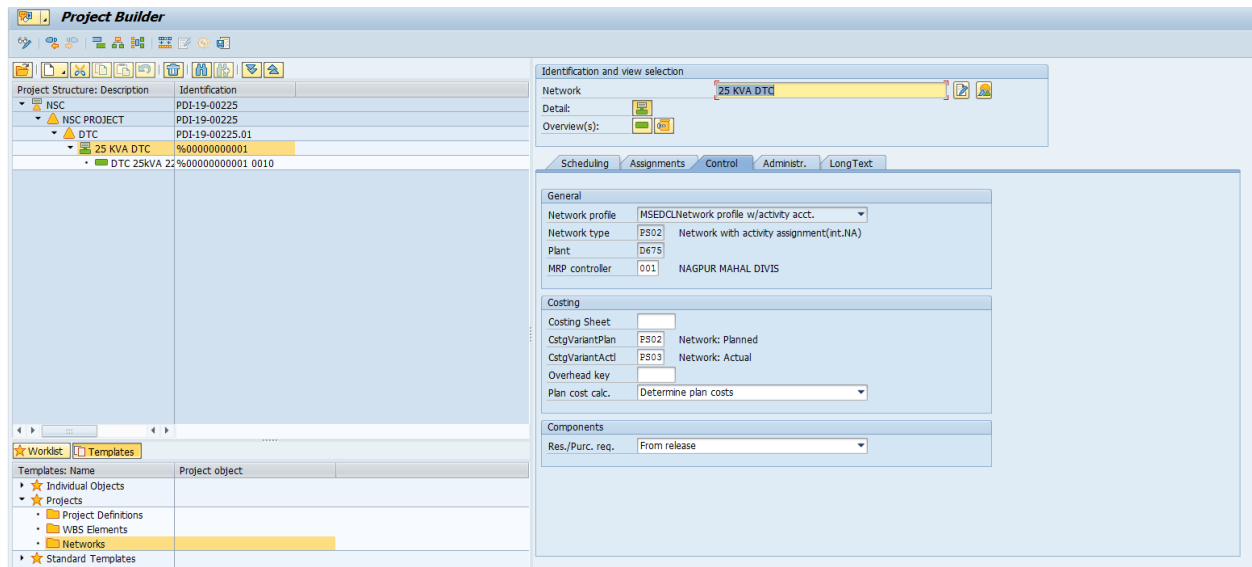
Right click on WBS and select Create-> Copy Network



Select required activity from F4 option from std. network Field.



Enter description and press Enter

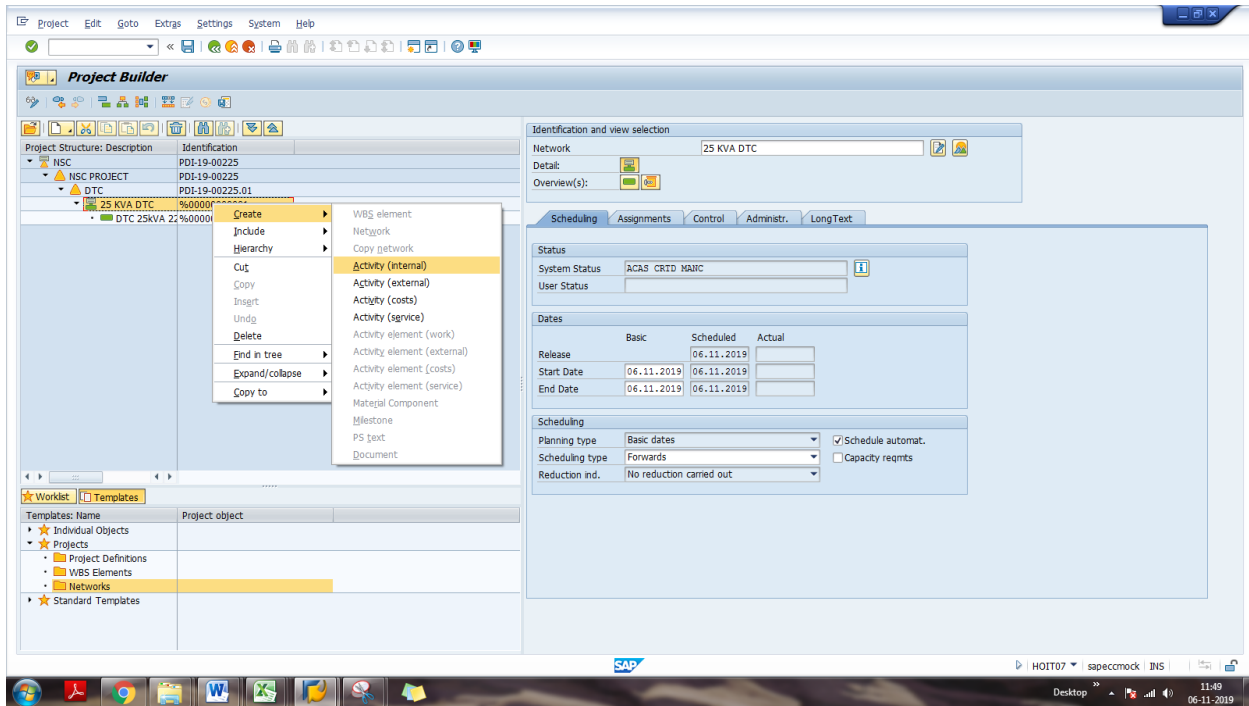


Create network for each WBS in project.

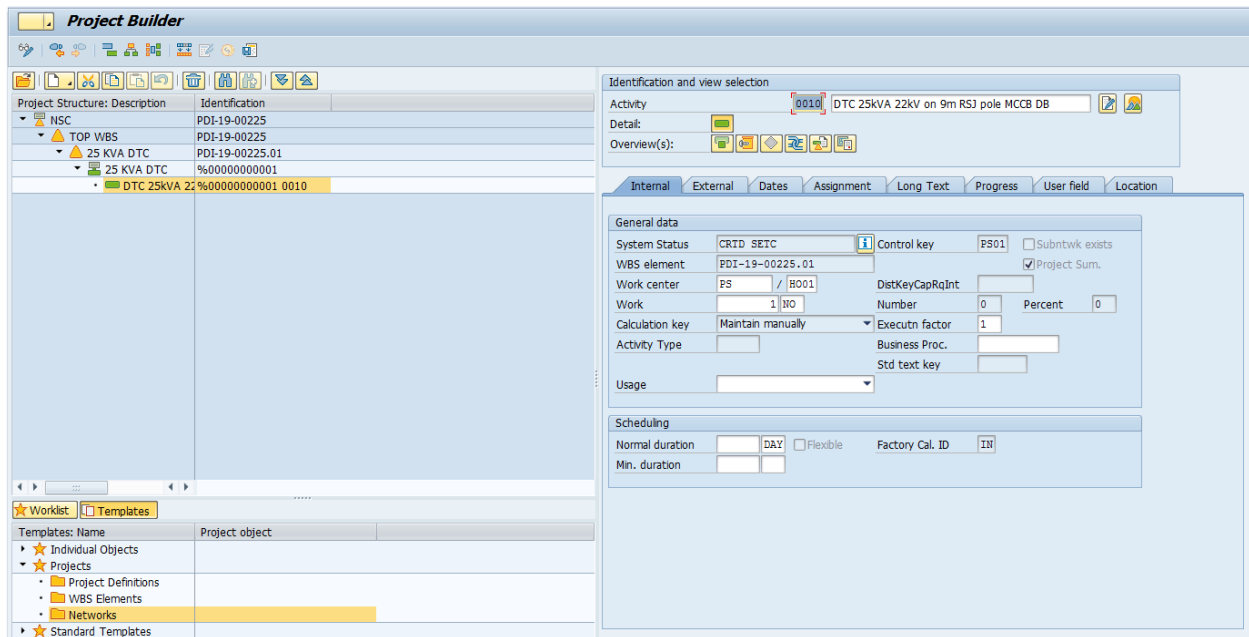
After creation of network, create activity element for each network.

While copying std. network, activity element will be created automatically. If it is not created then create activity manually.

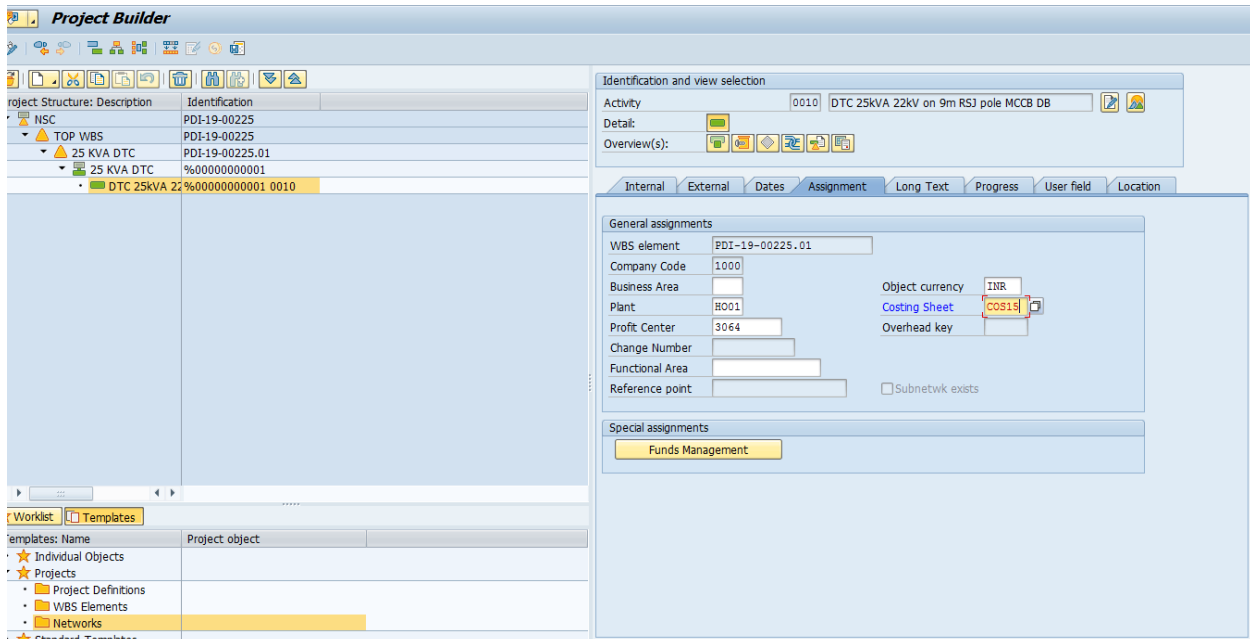
To create activity manually, first right click on Network and select Create-> Activity (Internal)



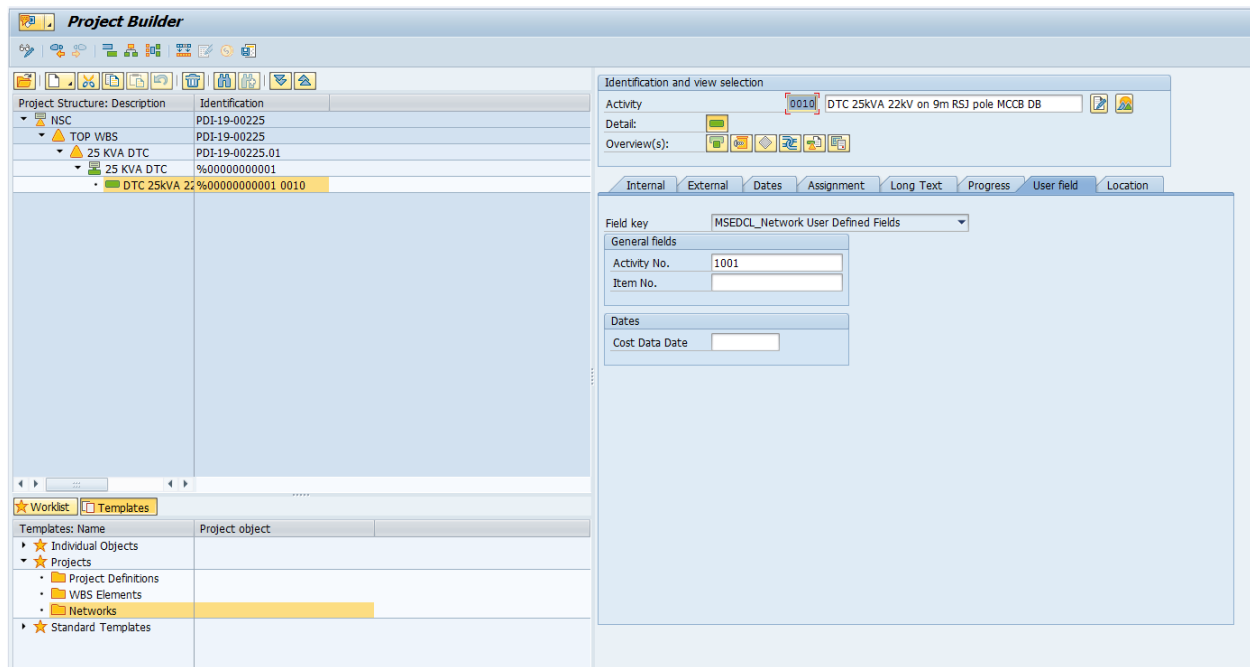
Enter Description of activity, Work and Execution Factor for an activity.



Select costing sheet in "Assignment Tab"



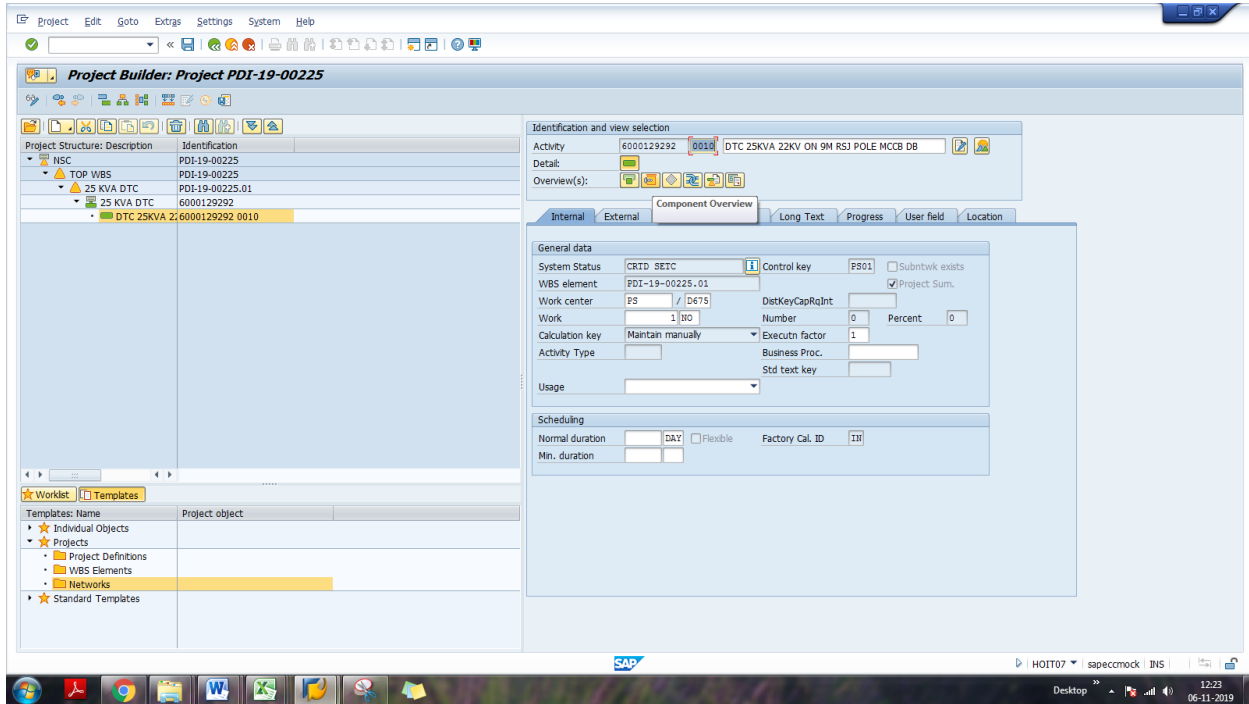
Enter Activity No in tab "User Field Tab"



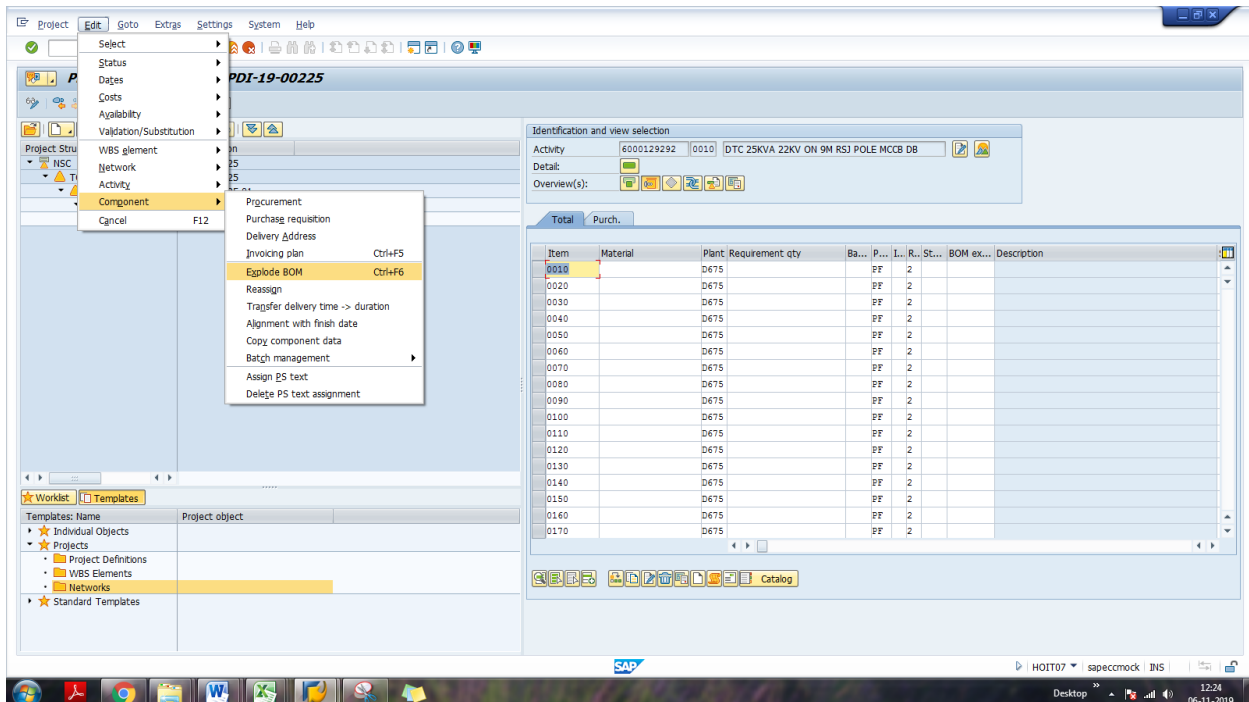
Save the project.

11. Add materials and services under activity.

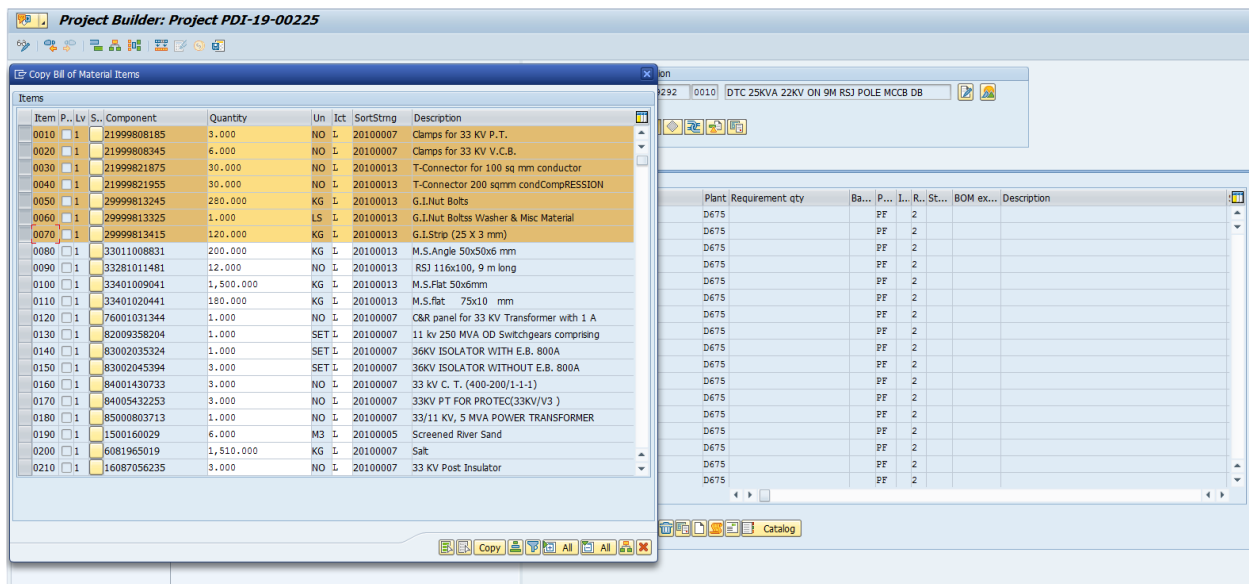
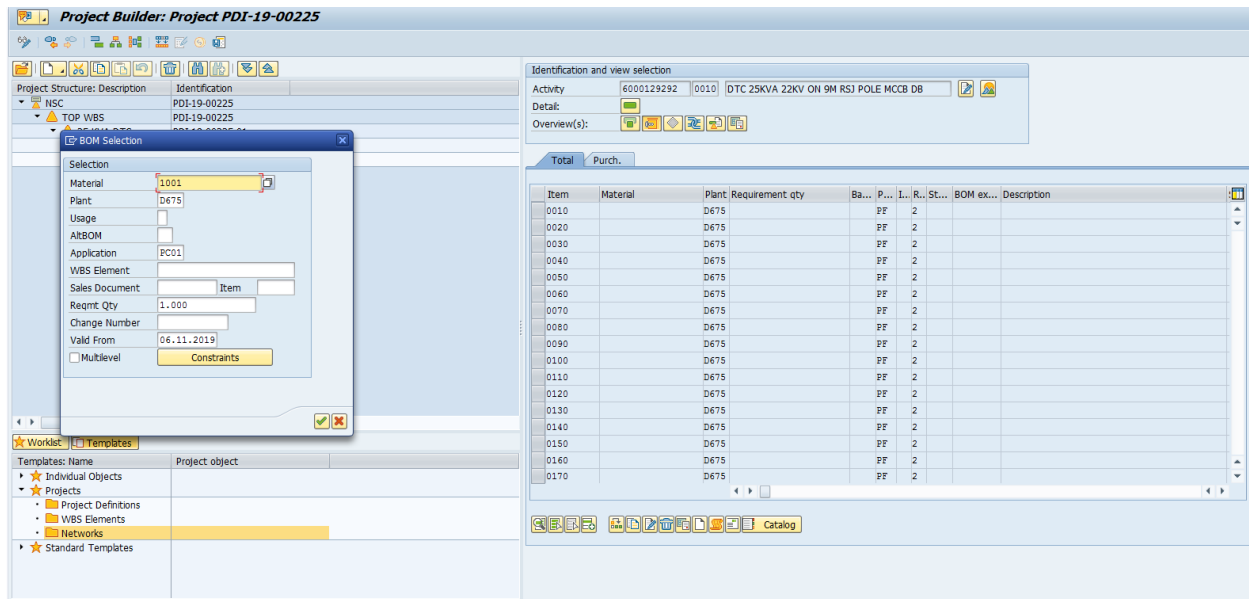
Select Activity and click on “Component Overview” Icon



Select Edit-> Component->Explode BOM



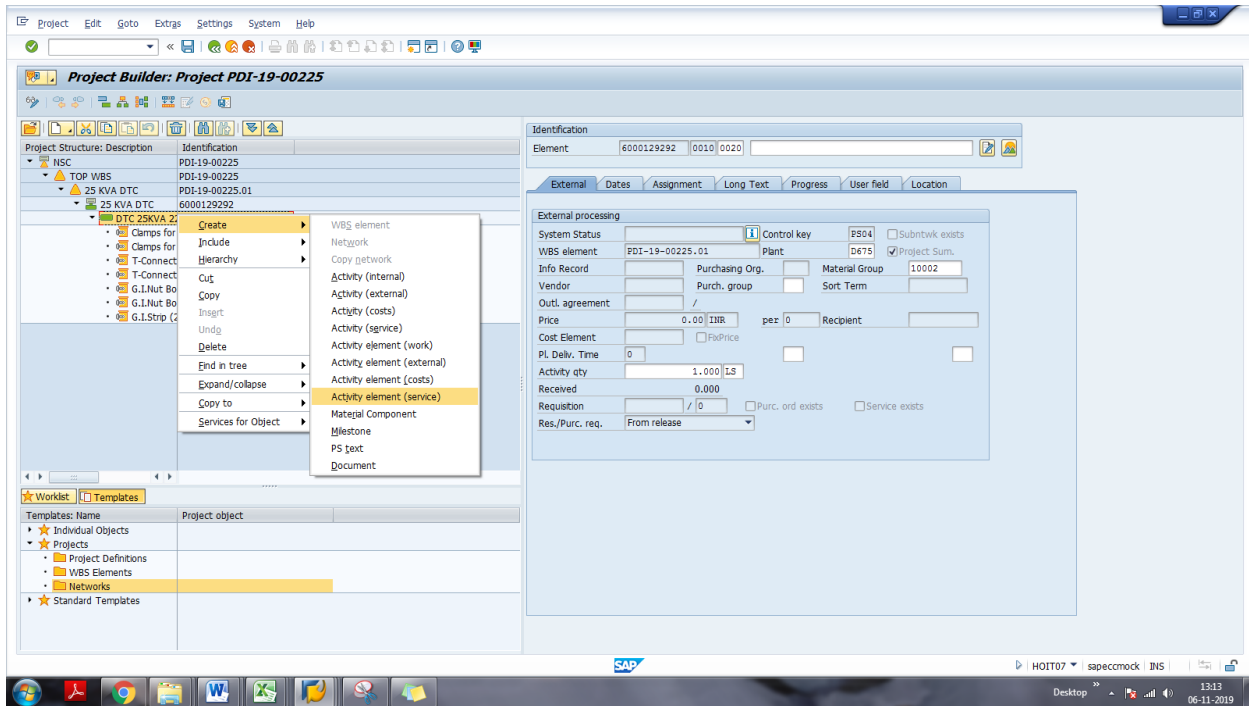
Enter activity no as Material in BOM Selection Dialog Box



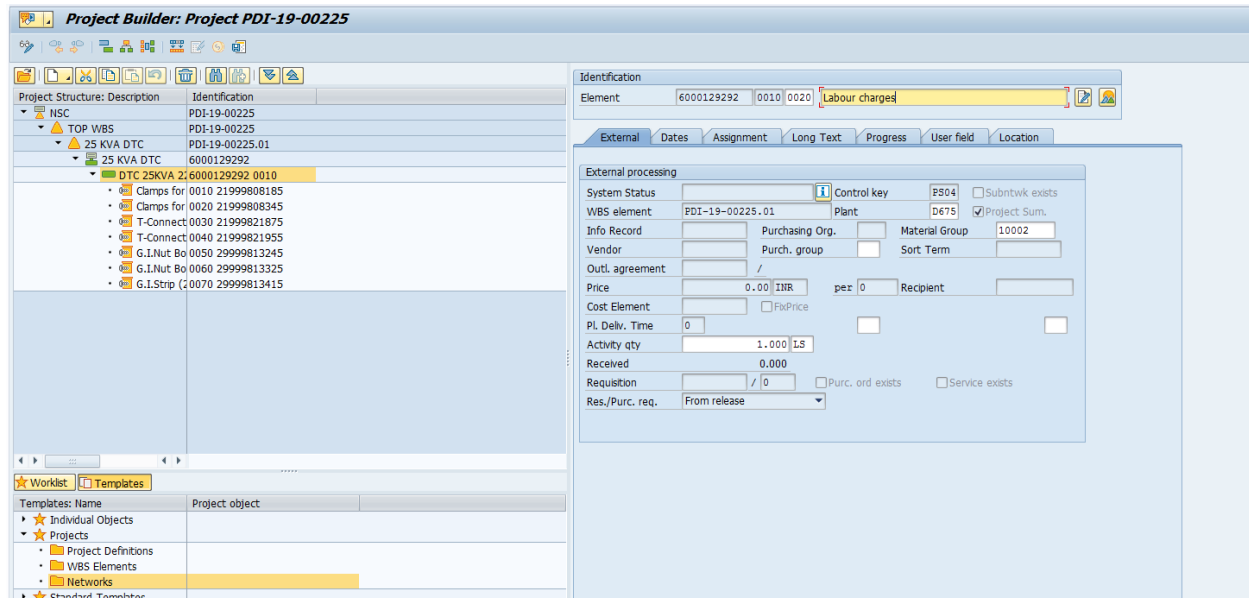
Select materials and click on COPY button

We can add/modify/delete material manually also in component overview window.

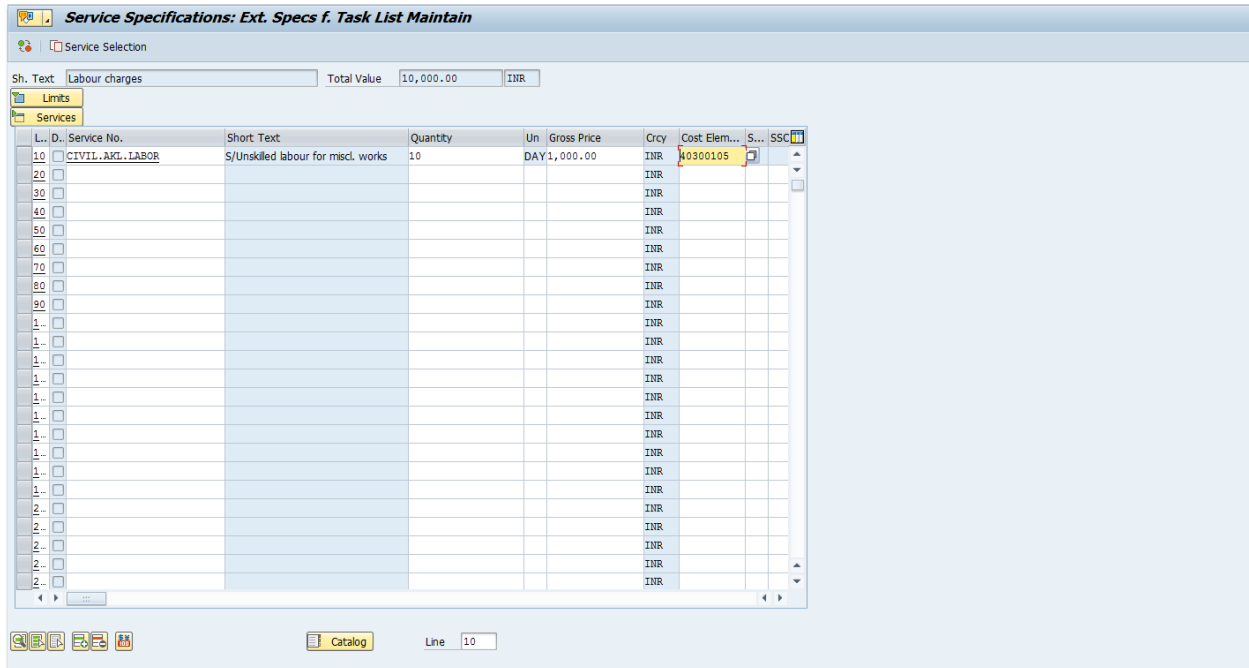
Same way to add civil services in activity, Right click on activity->Create->Activity Element (Service)



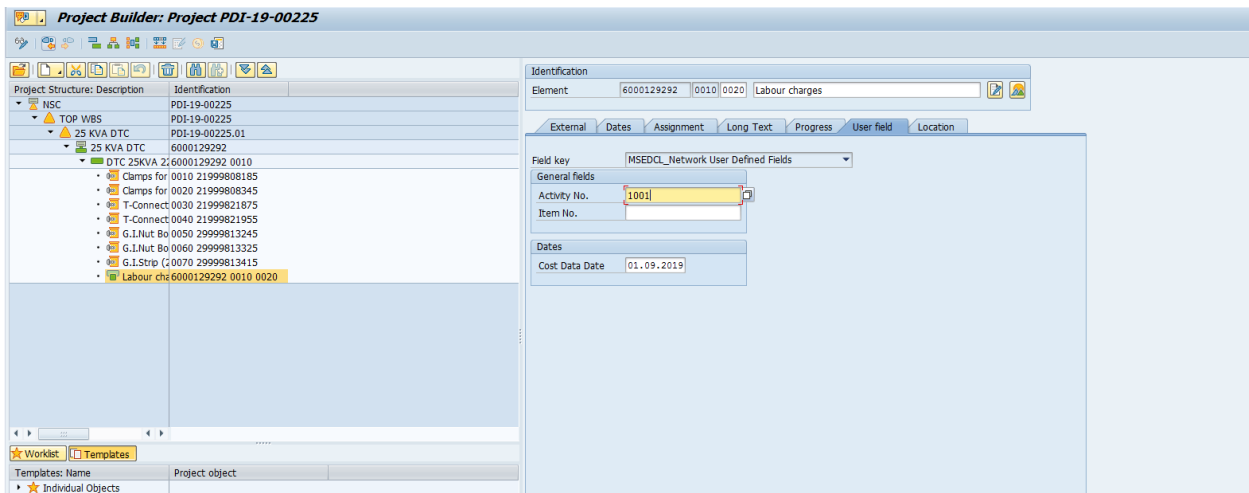
Enter description and press Enter



Enter Service details and amount. Take Cost element 40300105 always for services in project.



Enter same activity no as main activity in service activity.



12. Once all WBS elements, networks and activities are created. Release the User Status.

Project Builder: Project PDI-19-00225

Project Structure: Description Identification

NSC	PDI-19-00225
TOP WBS	PDI-19-00225
25 KVA DTC	PDI-19-00225.01
25 KVA DTC	6000129292
DTC 25KVA 2:6000129292 0010	

Identification and view selection

Project Def. PDI-19-00225 NSC

Detail:

Overview(s):

Basic data Control Administration Partner Long Text Cust. enhancement Collect. PR Indicators

Status

System Status CRID

User status CRID

Project coding mask

Screen PDI-00-00000.00.00

Responsibilities

Tender Floater

DPR Approver

Dates

Start date 06.11.2019

Finish date

Factory calend. IN

Time unit DAY

Organization

CO area 1000

Company code 1000

Plant D675

Profit Center 3064

Proj.currency INR

Worklist Templates

Templates: Name Project object

Individual Objects

Projects

Change Status

Proj. Def. PDI-19-00225 NSC

Ten. Float 0

Status Business processes

System status

Stat Text

CRID Created

Status with status no.

No Stat Text

1 CRID Create

2 ADPR Approved DPR

3 MERC Approved By MERC

4 BOQF BOQ Floated

5 REL Release

Status w/o status no.

Active Status

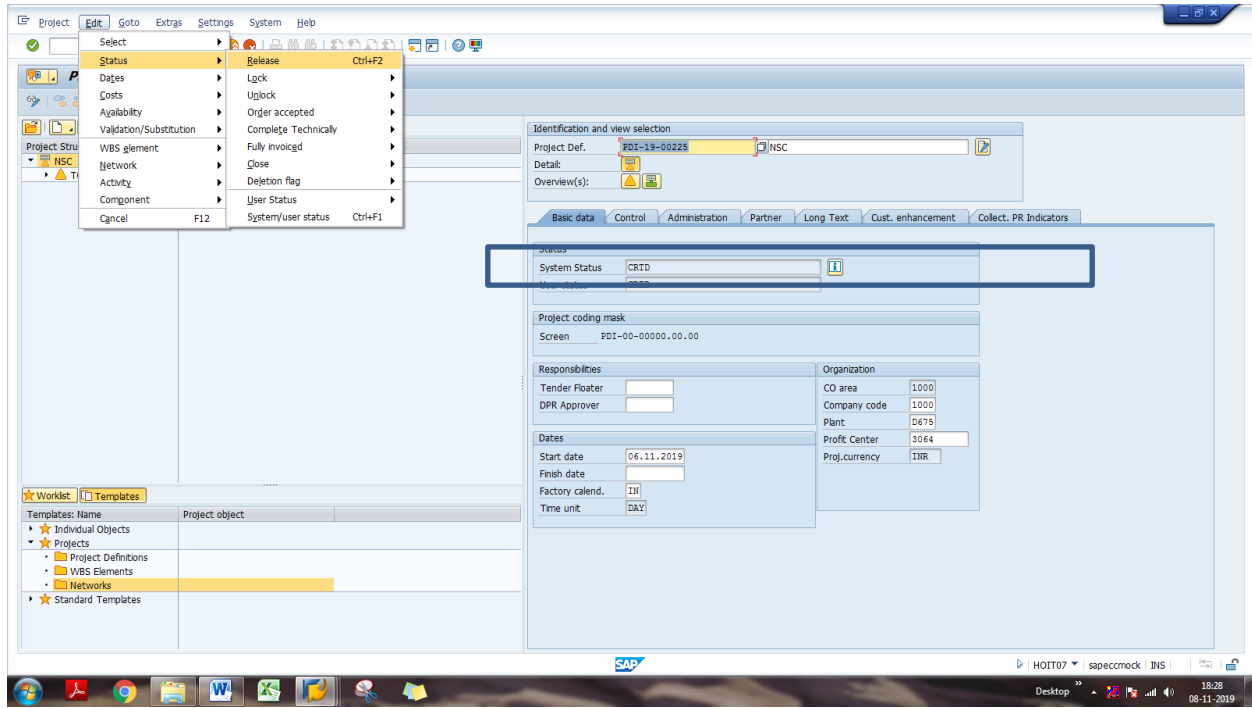
ChangeDocuments

Status Profile 1000004 MSEDCL Proj_status Pro..

Double Click on each status to release User Status. Once User Status is released save the project.

12. Release the budget for project. After assigninf the budget to project release the Sytem Status of the project.

Click on Edit-Status-Release to release System Status and save the project.



Step 2. Creation of Work Order in PS module of SAP ERP system

13. Project PO creation

Following 3 POs are created for projects

- 1. Material**
- 2. Centages**
- 3. Civil (If project have civil services)**

Run t-code ZPS_PO to create PO for the project.

Enter Project No, vendor code, retention, contract period, above/below percentage. Always enter above below percentage having three decimal places e.g. 2.500.

Choose PO to create and execute

The screenshot shows the SAP 'Project Purchase orders creation' form. It is divided into three main sections:

- Fill Details:** Contains input fields for Project No (PDI-19-00225), Vendor (100024288), Retention in Percent (10), and Contract period in month (24).
- Fill Condition Details:** Contains radio buttons for '% Below Est. Cost' (selected), '% Above Est. Cost', and '% Quoted rate' (with a value of 6.990).
- Select type of PO:** Contains radio buttons for 'Material PO' (selected), 'Civil Work PO', and 'Centages(Service) PO'.

After Execution, system will provide PO no.

Step 3. Division In-charge will create Work Order PDF in Maintenance Portal