

Printers

TABLE OF CONTENTS

RICE LAKE SURVIVOR® SST3®	880	DTL	918
WASHDOWN LABEL PRINTER	880	<i>Direct Thermal Label</i>	
RICE LAKE GUARDIAN™	882	DTL PLUS/DTT	919
STAINLESS STEEL PRINTER ENCLOSURE	882	DTL-SYN	919
RICE LAKE GUARDIAN G-2™	882	TTL	920
<i>Steel Printer Enclosure</i>		<i>Thermal Transfer Label</i>	
RICE LAKE POLY GUARD	883	TT STANDARD TAG	921
<i>Clear Printer Enclosure</i>		SDR SUPER DURABLE RIBBON	921
HONEYWELL E-CLASS III	884	FANTASTOCK THERMAL TRANSFER LABEL	921
HONEYWELL M-4206 MARK II/ M-4210 MARK II	886	MAXWAX™ GPR	922
HONEYWELL I-4212E MARK II	888	<i>General-Purpose Ribbon</i>	
<i>Direct Thermal Printer</i>		TAPE AND TICKET PRINTER IMPACT RIBBONS	923
HONEYWELL H-4212 / H-4310	890	TAPE PRINTER PAPER SUPPLIES	924
<i>Direct Thermal/Thermal Transfer Label Printer</i>		<i>Hecon Printers, EL522 and EL516 - 20266</i>	
HONEYWELL DMXREW1	892	<i>Rice Lake Scales - 71630 or 105182</i>	
<i>Label Rewinder/Unwinder</i>		<i>SP2200, SP2000 - 20265</i>	
EPSON® TM-T88V	893	<i>Blank Scale Ticket - 22263</i>	
<i>POS Printer</i>		ELECTRONIC SCALE TICKETS	925
EPSON® TM-U220	894	MECHANICAL SCALE TICKETS	926
<i>Tape Printer</i>		<i>Fairbanks™ Scales - 20260</i>	
EPSON® TM-U295	896	<i>Create Your Own Custom Ticket</i>	
<i>Ticket Printer</i>		<i>Howe™ Scales - 20261</i>	
EPSON® TM-U590	898	REPLACEMENT PRINT HEADS	927
<i>Ticket Printer</i>		PRINTER CABLES	928
GODEX® DT2X/DT4X/G500	900	DUST COVERS	929
<i>Label Printer</i>			
OKIDATA 186 TURBO	902		
<i>Microline Printers</i>			
OKIDATA 320/390/420 TURBO	903		
<i>Microline Printers</i>			
PRINTEK MTP400SI	905		
<i>Mobile Printer</i>			
STAR® MICRONICS SP298	906		
<i>Dot Matrix Ticket Printer</i>			
STAR® SP512/SP542/SP712/SP742	908		
<i>Dot Matrix Printers</i>			
STAR® TSP 847	910		
<i>Receipt Thermal Printer</i>			
STAR® TSP654II/TSP743 II	911		
<i>Direct Thermal Printers</i>			
ZEBRA® ZD 410/TLP 2824 PLUS	913		
<i>Thermal Printer</i>			
ZEBRA ZD SERIES	914		
<i>Label Printer</i>			
ZEBRA® QLN420	916		
<i>Mobile Printer</i>			

ESPAÑOL | Visit ricelake.com/spanish
to see all Rice Lake materials
available in Spanish

Product names, logos, brands and other trademarks featured
or referred to within this publication are the property of their respective trademark holders.

Rice Lake SURVIVOR® SST3®

Washdown Label Printer



Standard Features

- IP69K rating
- Washdown 304 stainless steel enclosure
- Electronics protected from splashes
- Direct thermal
- 203dpi print head (optional 300dpi model)
- Label length detection
- Real-time clock
- USB, serial or parallel communications
- Line mode

Options

- Wireless or wired ethernet
- Heater
- Thermal transfer

APPROVALS



Specifications

Print Speed:

2 in to 10 in per second (51 mm to 254 mm)

Supply Roll Capacity:

8 in (203 mm) O D on 1.5 in to 3.0 in
(38 mm to 76.2 mm) cores

Bar Code Modulus:

5 mil to 55 mil "X" dimension in picket fence or ladder orientations

Media Width:

0.75 in to 4.65 in (17 mm to 118 mm)

Media Type:

Roll fed, die-cut or continuous labels;
perforated or continuous tag/ticket stock

Print Length:

0.25 in to 99 in (6 mm to 2,475 mm)

Media Thickness:

0.0025 in to 0.0100 in (0.0635 mm to 0.254 mm)

Ribbons (Optional):

Industry standard ribbon widths:
1 in (25 mm) ribbon core, 1,476 ft (450 m) in length

Bar Codes:

Code 3 of 9, UPC-A, UPC-E, Interleaved 2 of 5, code 128, EAN-8, EAN-13, HIBC, Codabar, Plessey, UPC 2 and 5-digit addendums, Code 93, Postnet, UCC/Ean Code 128, Telepen, UPS MaxiCode, FIM, PDF417, USD-8, Datamatrix, QR Code, Aztec, TLC 39, Micro PDF417, RSS

Graphics Support:

PCX, BMP and IMG files

Memory:

16 MB RAM (8 MB FLASH)
3 MB user available

Rating/Material:

IP69K/stainless steel 304

Interfaces:

USB, Centronics® parallel port, RS-232 at 600 BPS to 38,400 BPS

Power Source:

Auto-sensing 103.5 VAC to 126.50 VAC or 207 VAC to 253 VAC at 47 Hz to 63 Hz;
US or European power cord

Operating Temperature:

40° F to 95° F (4° C to 35° C)

Dimensions:

(W x L x H): 27 x 14 x 13.6 in (686.8 x 355.6 x 345.4 mm)

Approvals:

UL listed, CE marked

Processor:

Dragon ball, 150 MHz

Warranty:

One-year limited warranty
One-year or 1 million linear inches
on original print head
90 days on replacement print head

Part Number/Price

Part #	Description	Est. Weight	Price
107402	SST3 direct thermal, peel and present, internal rewinder included	70 lb	\$4,775.00
110303	SST3 direct thermal, peel and present, internal rewinder with heater installed	70 lb	\$5,130.00
111868	SST3 direct thermal, peel and present, internal rewinder, 230 VAC European power cord	70 lb	\$4,775.00
111871	SST3 direct thermal, peel and present, internal rewinder, 230 VAC European power cord, heater	70 lb	\$5,130.00
158890	SST3 direct thermal, peel and present, internal rewinder, 300 dpi	70 lb	\$5,295.00

Options/Accessories

Part #	Description	Price
111121	Heater kit for SST3 115 VAC (for installs after printer has been purchased)	\$505.00
111872	Heater kit for SST3, 230 VAC (for installs after printer has been purchased)	\$505.00
76729	Thermal transfer option Mark II	\$100.00
76732	Present sensor only M Class	\$125.00
52412	Network connectivity (MPS-1T,) 10 mbps micro print server	\$495.00
35664	Pre-saturated cleaning cards, 4 x 6 in, 25/box	\$50.00
93181	Film, print head cleaning 4 in wide, three/box	\$18.00
76734	Programmer's manual (PDF included on Honeywell CD-ROM)	\$125.00
77562	Operating manual (PDF included on Honeywell CD-ROM)	\$25.00
109181	Manual service SST3	\$15.00
76735	Maintenance manual, M class	\$83.00
103372	Internal LAN (Ethernet) card	\$250.00
113764	Wireless and LAN card, attaches to back, external antenna	\$940.00
103374	USB Host, LAN and wireless card, internal antenna	\$550.00
Label Stock/Ribbon (W x L)		
21776	Direct thermal, 3 x 3 in, 8 in diameter with perf., 2,000/roll	\$40.25/roll
150921	Direct thermal, 4 x 6 in, 8 in diameter with perf., 1,000/roll	\$30.50/roll
25975	Direct thermal, 4.25 x 2.5 in, 6 in diameter with perf., 1,095/roll	\$25.65/roll
21785	Thermal transfer, 2 x 1 in, 8 in diameter, 5,500/roll	\$12.95/roll
21788	Thermal transfer, 4 x 6 in, 8 in diameter, 1,000/roll	\$17.90/roll
20573	Thermal transfer, 4 x 6.5 in, 8 in diameter, 900/roll	\$19.20/roll
126629	Thermal kit, (4) 4 in labels, (2) 4 in ribbons and cleaning card	\$100.95
34056	Ribbon, black 4 in, 1,182ft, wax	\$25.25/roll
Print Head		
103369	Print head 203 dpi, M4210 only	\$495.00
Cables		
41276	DB9 male RS-232 serial data cable with blunt end (Rice Lake indicators)	\$65.00
64794	DB9 RS-232 serial data cable with DB9F to DB9M	\$65.00
79074	USB-A (male) to USB-B (male) cable, 6ft	\$30.00
Consult	Custom 20 mA/RS-232 serial interface cable	\$100.00

Custom cables are designed to interface with your specific equipment. Please specify equipment model number and connector type.

Standard cable length is 5 ft. \$2.00 charge for each additional foot.

Rice Lake GUARDIAN™

Stainless Steel Printer Enclosure



Guardian Plus/Guardian Max

Specifications

Enclosure:

304 stainless steel; piano-style hinge

Dimensions:
Part #66762 (W x H x D): 14.25 x 14.25 x 21.25 in
(361.2 x 361.2 x 539.7 mm)
Weight:

Approximately 38 lb (17.2 kg)

Warranty:

One-year limited warranty

Standard Features

- Designed to protect the Honeywell I-4208, I-4308 and I-4212 printers from harsh washdown environments
- Single lift-and-turn latch for easy access
- Adjustable anti-skid feet for easy leveling alignment and cleaning under unit
- Sliding label-access door
- Heavy-gauge 304 stainless steel construction for durability

Part Number/Price

Part #	Description	Est. Weight	Price
66762	Guardian stainless steel printer enclosure for Honeywell I-4206, I-4208, I-4308, I-4212 and Mark II	38 lb	\$2,900.00

Consult factory for additional models and pricing

Rice Lake GUARDIAN G-2™

Steel Printer Enclosure



Guardian G-2

Specifications

Enclosure:

Heavy-gauge 304 stainless steel

Dimensions:

Part #78672 (W x H x D): 12.75 x 8.25 x 18.5 in (323.8 x 209.5 x 469.9 mm)

Weight:

Approximately 30 lb (13.6 kg)

Warranty:

One-year limited warranty

Standard Features

- Designed to protect various printers from harsh washdown environments
- Single lift-and-turn latch for easy access
- Adjustable anti-skid feet for easy leveling alignment and cleaning under unit
- Sliding label-access door
- Heavy-gauge 304 stainless steel construction for durability

Part Number/Price

Part #	Description	Est. Weight	Price
78672	Guardian, G-2 for Zebra TLP2844	24 lb	\$1,150.00
99465	Guardian, G-2, LP2844, GKD	24 lb	\$1,150.00
107638	Guardian, G-2 RL-42DT, DT4	24 lb	\$1,150.00
107639	Guardian, G-2 RL-42TT, G500	24 lb	\$1,150.00

Options/Accessories

Part #	Description	Price
46341	Heater option	\$210.00
46342	Fan option	\$110.00

Specifications

Dimensions:

Part #88531 (W x T x L): 13 x 12 ¾ x 23 ½ in
Add ½ in sides for latches and ½ in side door
Part #88532: 14 x 14 ¾ x 24 ½ in
Add ½ in sides for latches and ½ in side door

Weight:

24 lbs

Enclosure:

¼ in Polycarbonate
Base-natural polyethylene (butcher's block)

Warranty:

90-day limited warranty



Standard Features

- Designed for use in meat and food processing plants
- Cover separates from bottom
- In washdown position, stainless latches hold bottom and cover together
- Power and data cable feed through sealed notch in back of enclosure
- Side door for easy label loading

Part Number/Price

Part #	Description	Price
88531	Enclosure, Honeywell M-Class	\$1,200.00
88532	Enclosure, Honeywell I-Class	\$1,450.00
Consult	Additional models available	Consult

Options/Accessories

Part #	Description	Price
Consult	Ventilation fan	Consult
Consult	Heater assembly with power	Consult

Honeywell E-Class III



Standard Features

- 203 dpi (8 dots/mm) print resolution
- Drop-in media loading
- USB, RS-232 or parallel
- Gap label, black mark plain or fanfold label
- Label length detection
- Direct thermal and thermal transfer models
- Rugged construction to double wall and concentric hinges
- Media viewing window
- Field-installable options
- NETira software

Specifications

Print Speed:

Basic: 4 in per second
Advanced: 5 in per second (IPS) (127 mm/s)

Print Length Range:

0.375 to 99 in (9.5 to 2,514 mm)

Print Width:

4.25 in maximum

Media Types:

Label roll OD: Max 5.0 in
Core: 1 in
Fan-fold, die-cut or continuous labels, perforated or continuous tag/ticket stock
Width: 0.75 in to 4.4 in
Thickness: 0.0025 in to 0.01 in
Sensing: Basic-fixed position
Advanced: Positional adjustable sensors capable of gap between labels, black bar on back, and notch or hole sensing

Printer Language:

DPL, PL-Z or PL-E emulation

Ribbon:

Coated side in or coated side out (CSI/CSO)
Width range 1.0 in-4.3 in (25 mm to 109 mm)
Core: 0.5 in-1.0 in (13 mm to 25 mm)

Resident Fonts:

10 alphanumeric fonts from 0.08 in to 0.25 in including OCR-A, OCR-B, CG
Triumvirate smooth font from AGFA

Bar Codes:

Linear (Code 3 of 9, Code 93, Code 128), UCC/EAN-128, UPC E, EAN 8/13, Interleaved 2 or 5, Codabar, Post Net, HIBC, UPC 2 and 5 Addendums, Plessey and Telepen

2-D Symbologies:

MaxiCode, PDF417, Datamatrix, QR Code, USD-8, Aztec, TLC 39, Micro PDF417

Dimensions:

(W x L x H): 8.01 x 7.36 x 11.1 in (203.5 x 187 x 282 mm)

Memory:

64 MB Flash/16 MB DRAM

Interfaces:

Baud rate: up to 38400 BPS
Standard: USB and RS-232 (DB-9)
Advanced model mini-parallel centronics also

Power:

Auto switching 100/240 VAC, 50/60 Hz,
U.S. power cord

Environment:

Operation: 40° F to 95° F (4° C to 35° C)

Operating Temperature:

40° F to 95° F (4° C to 35° C)

Weight:

5.2 lb (2.4 kg)

Warranty:

One-year limited warranty

Part Number/Price

Part #	Description	Est. Weight	Price
Basic Model			
121119	Printer, E-4204B direct thermal, tear bar 110/240 VAC printer	6 lb	\$495.00
Advanced Mode			
121120	Printer, E-4205A, direct thermal, 110/240 V printer	6 lb	\$595.00
121122	Printer, E-4205A, direct thermal, peel and present, 110/240 V printer	6 lb	\$630.00
121121	Printer, E-4205A, thermal transfer, peel and present, 110/240 V printer	6 lb	\$730.00

Options/Accessories

Part #	Description	Price
126769	Peel and present option for basic model	\$145.00
64794	RS-232 DB9F to DB9M nine-pin serial cable	\$65.00
79074	USB-A (male) to USB-B (male) cable, 6ft	\$30.00
41276	6 ft serial cable, DB9 to blunt end (Rice Lake indicators)	\$65.00
68517	External rewinder/unwinder Honeywell REW1, 110 V	\$495.00
112517	Printhead, 203 dpi E-Class II/III	\$125.00
38941	Cleaning pens for open print head printers, 12 per box	\$57.00
Label Stock/Ribbon (W x L)		
40332	Direct thermal, 2.25 x 2 in, 5 in diameter with perf., 1,445/roll	\$14.25
53251	Direct thermal, 4.0 x 3 in, 5 in diameter with perf., 930/roll	\$23.35
40331	Direct thermal, 4.0 x 4.0 in, 5 in diameter with perf., 745/roll	\$23.35
37345	Direct thermal, 4.0 x 6.0 in, 5 in diameter with perf., 450/roll	\$20.00
53261	Thermal transfer, 4.0 x 3.0 in, 5 in diameter with perf., 930/roll	\$18.05
35477	Ribbon, 3.5 in x 360 ft, general purpose	\$8.25
35478	Ribbon, 4.33 in x 360 ft, general purpose	\$10.65

Honeywell M-4206 Mark II/M-4210 Mark II



RFID OPTION

Standard Features

- 203 dpi (8 dots/mm) print resolution (M4308, 300 dpi)
- Lightweight die-cast aluminum frame
- Supplies loading diagram embossed into the frame
- Collapsible ribbon hub for loading and unloading of ribbons
- Media window
- Scaleable font engine
- USB, serial and parallel communications
- Reverse fields/mirror image (fonts/graphics can be printed as a normal or reverse image)
- Real-time clock (M-4210)
- Support CD-ROM (contains DMX EM conf. tool, Windows® print drivers and manuals)
- Line mode
- LCD Graphical Display

Option

- R-series RFID HF and UHF M210 Mark II

APPROVALS



Specifications

Print Speed:

M-4206 Mark II: 2 in to 6 in per second
(51 mm to 152 mm)
M-4210 Mark II: 2 in to 10 in per second
(51 mm to 254 mm)
M4308: 2 in to 8 in per second
(51 mm to 203 mm)

Supply Roll Capacity:

8 in (203 mm) O D on 1.5 in to 3.0 in (38 mm to 76.2 mm) cores
Fanfold stock accepted from rear and bottom of printer

Bar Code Modulus:

5 mil to 55 mil "X" dimension in picket fence or ladder orientations

Media Width:

0.75 in to 4.65 in (17 mm to 118 mm)

Media Type:

Roll fed or fan-fold materials, die-cut or continuous labels; perforated or continuous tag/ticket stock

Print Length:

0.25 in to 99 in (6 mm to 2,475 mm)

Media Thickness:

0.0025 in to .01 in (.0635 mm to .254 mm)

Ribbons:

Industry standard ribbon widths; 1 in (25 mm) ribbon core, 1,476 ft (450 m) in length

Bar Codes:

Code 3 of 9, UPC-A, UPC-E, Interleaved 2 of 5, Code 128, EAN-8, EAN-13, HIBC, Codabar, Plessey, UPC 2 and 5 digit addendums, Code 93, Postnet, UCC/EAN Code 128, Telepen, UPS MaxiCode, FIM, PDF417, USD-8, Datamatrix, QR Code, Aztec, TLC 39, Micro PDF417, RSS

Graphics Supported:

.PCX, .BMP and .IMG files

Memory:

M4206: 8 MB RAM (8 MB FLASH), 1 MB user available
M4210: 16 MB RAM (8 MB FLASH), 3 MB user available

Construction:

Metal

Interfaces:

USB, Centronics® parallel port, RS-232 at 600 BPS to 38400 BPS

Power Source:

Auto-sensing 90 to 132 or 180 to 264 VAC at 47 to 63 Hz; specify appropriate power supply and cord when ordering

Operating Temperature:

40° F to 95° F (4° C to 35° C)

Overall Dimensions:

(H x W x D): 10.21 x 10.10 x 18.19 in (259 x 257 x 462 mm)

Approvals:

UL listed, CSA certified, CE marked, TUV-GS safety standards, FCC Class A emissions, RoHS and WEE compliant

Processor:

M-4206 Mark II Dragonball, 100 MHz
M-4210 Mark II Dragonball, 150 MHz

Weight:

27 lb

Warranty:

One-year limited warranty
One-year or 1 million linear inches on original print head
90 days on replacement print head

Honeywell M-4206 Mark II/M-4210 Mark II

Part Number/Price

Part #	Description	Est. Weight	Price
M-4206 Mark II			
103364	Label printer, M-4206 Mark II direct thermal, 115/230 VAC	27 lb	\$1,145.00
103365	Label printer, M-4206 Mark II direct thermal, 115/230 VAC, Ethernet	27 lb	\$1,395.00
M-4210 Mark II			
103367	Label printer, M-4210 Mark II direct thermal, 115/230 VAC	27 lb	\$1,395.00
103366	Label printer, M-4210 Mark II direct thermal 115/230 VAC, Ethernet	27 lb	\$1,645.00
108891	Label printer, M-4210 Mark II direct thermal, peel and present, internal rewind	30 lb	\$1,800.00
158826	Label printer, M-4308, Mark II, direct thermal, peel and present, and internal rewinder	30 lb	\$1,970.00
Consult	Label printer, M-4308 models by request		Consult

Options/Accessories

Part #	Description	Price
76729	Thermal transfer option (coated side in)	\$100.00
76730	Peel mechanism and present sensor (requires internal rewinder)	\$205.00
76731	Internal rewinder	\$200.00
76732	Present sensor only	\$125.00
76733	Standard cutter kit for 10 mil stock	\$495.00
35664	Pre-saturated cleaning cards, 4 x 6 in 25/box	\$50.00
93181	Film, print head cleaning 4 in wide, 3/box	\$18.00
76734	Programmer's manual (PDF included on Honeywell CD-ROM)	\$125.00
77562	Operating manual (PDF included on Honeywell CD-ROM)	\$25.00
103372	Internal LAN (Ethernet) card	\$250.00
103373	Wireless and LAN card	\$475.00
103374	USB host, LAN and wireless card M-4210 only	\$550.00
Label Stock/Ribbon (W x L)		
21776	Direct thermal, 3 x 3 in, 8 in diameter with perf., 2,000/roll	\$40.25/roll
150921	Direct thermal, 4 x 6 in, 6 in diameter with perf., 1,000/roll	\$30.50/roll
25975	Direct thermal, 4.25 x 2.5 in, 6 in diameter, with perf. 1,095/roll	\$25.65/roll
21785	Thermal transfer, 2 x 1 in, 8 in diameter, 5,500/roll	\$12.95/roll
21788	Thermal transfer, 4 x 6 in, 8 in diameter, 1,000/roll	\$17.90/roll
20573	Thermal transfer, 4 x 6.5 in, 8 in diameter, 900/roll	\$19.20/roll
34056	Ribbon, black, 4 in, 1,181 ft, wax	\$25.25/roll
126629	Thermal kit, (4) 4 x 4 in labels, (2) 4 in ribbons and 1 cleaning card	\$100.95
Print Head		
103369	Print head 203 dpi M-class, M4210 only	\$495.00
103368	Print head 203 dpi M-4206	\$495.00
Cables		
41276	DB9 male RS-232 serial data cable with blunt end (Rice Lake indicators)	\$65.00
64794	DB9 RS-232 serial data cable with DB9F to DB9M	\$65.00
37527	6 ft parallel cable	\$35.00
79074	USB-A (male) to USB-B (male) cable, 6ft	\$30.00

Honeywell I-4212e Mark II

Direct Thermal Printer



Standard Features

- 203 dpi (8 dots/mm) print resolution
- Easy-to-read liquid crystal display (LCD)
- Scaleable engine
- 3 in and 1.5 in (76.2 mm and 38.1 mm) revolving media hub
- 32MB/64MB memory
- Media window
- Honeywell CD-ROM (contains Windows® print drivers and manuals)
- NETira software

APPROVALS



Specifications

Print Speed:

12 in per second (305 mm)

Resolution:

203 dpi (8 dots/mm)

Maximum Print Width:

4.094 in (104 mm)

Media Width:

1 in to 4.65 in (25 mm to 118 mm)

Print Length:

0.25 in to 99 in (6 mm to 2,475 mm) .75 in (19 mm) minimum print length with optional present sensor

Supply Roll:

8 in (203 mm) maximum diameter on 1.5 in to 3 in (38 mm to 76 mm) core
Fan-fold stock accepted from rear of printer

Revolving Media Hubs:

Standard in 1.5 in and 3 in; optional 40 mm

Ribbons:

Industry standard ribbon widths; 1 in (25 mm) ribbon core, 1,968 ft (600 m) in length
Auto-sensing option

Bar Codes:

Code 39, Interleaved 2 of 5, Code 128 (subsets A,B and C), Codabar, LOGMARS, UPC-A, UPC-E, UPC 2 and 5 digit addendums, EAN-8, EAN-13, EAN 2 and 5 digit addendums, UPC random weight, Code 93, MSI Plessey, Universal Shipping Container Symbology, UCC/EAN Code 128, QR Code, Postnet, Code 128 MOD 43, PDF 417, Micro PDF, UPS MaxiCode (mode 2 and 3), Datamatrix, Telepen, Aztec Code

Graphics Support:

.PCX, .BMP and .JMG files

Dimensions:

(H x W x D): 12.7 x 12.62 x 18.6 in (322.6 x 320.5 x 472.4 mm)

Interfaces:

Centronics® parallel port (IEEE 1284 compliant), RS-232 at 300 to 38400 BPS, USB, optional Ethernet

Power Source:

Auto-sensing 90-264 VAC at 47-63 Hz; specify appropriate power cord when ordering

Approvals:

UL listed, CSA certified, CE marked, RoHS and WEE compliant

Warranty:

One-year limited warranty on parts
One-year or 1 million linear inches on original print head
90 days on replacement print head

Part Number/Price

Part #	Description	Est. Weight	Price
131143	Label printer, I-4212e direct thermal, 115 VAC	50lb	\$1,595.00
131145	Label printer, I-4212e direct thermal, 115 VAC, with internal rewind	50lb	\$1,795.00
131146	Label printer, I-4212e direct thermal, 115 VAC Peel and Present, internal rewind	50lb	\$1,945.00
131144	Label printer, I-4212e direct thermal, 230 VAC, Euro and British cord	50lb	\$1,595.00

Options/Accessories

Part #	Description	Price
131147	Thermal transfer option bidirectional	\$100.00
131148	Peel mechanism and present sensor (requires internal rewinder)	\$205.00
131149	Internal rewinder	\$200.00
131150	Internal Ethernet, interface kit (field installable)	\$325.00
131151	Wired LAN with Wireless-LAN 802.11 a/b/g with WPA 2 security protocol	\$500.00
53918	Standard cutter kit for 10 mil stock	\$695.00
131152	GP10 applicator interface card	\$225.00
35664	Pre-saturated cleaning cards, 4 x 6 in, 25/box	\$50.00
93181	Film, print head cleaning 4 in wide, 3/box	\$18.00
38941	Cleaning pens, 12 per box	\$57.00
64898	Additional programmer's manual	\$125.00
64896	Additional maintenance manual	\$129.00
75098	Additional operating manual	\$60.00
53918	Cutter kit	\$695.00
Label Stock/Ribbon (W x L)		
21776	Direct thermal, 3 x 3 in, 8 in diameter with perf., 2,000/roll	\$40.25/roll
150921	Direct thermal, 4 x 6 in, 8 in diameter with perf., 1,000/roll	\$30.50/roll
25975	Direct thermal, 4.25 x 2.5 in, 6 in diameter with perf., 1,095/roll	\$25.65/roll
21785	Thermal transfer, 2 x 1 in, 8 in diameter, 5,500/roll	\$12.95/roll
21788	Thermal transfer, 4 x 6 in, 8 in diameter, 1,000/roll	\$17.90/roll
20573	Thermal transfer, 4 x 6.5 in, 8 in diameter, 900/roll	\$19.20/roll
126629	Thermal kit, (4) 4 x 4 in labels, (2) 4 in ribbons and 1 cleaning card	\$100.95
34056	Ribbon (black), 4 in, 1,181 ft, wax	\$25.25/roll
Cables		
41276	DB9 male RS-232 serial data cable with blunt end (Rice Lake indicators)	\$65.00
64794	DB9F to DB9M RS-232 cable	\$65.00
79074	USB-A (male) to USB-B (male) cable, 6ft	\$30.00
Print Head		
131153	Printhead, 203 dpi, I-4212e	\$450.00

Honeywell H-4212 / H-4310

Direct Thermal/Thermal Transfer Label Printer



Standard Features

- Peel and present
- Thermal transfer
- Nine bitmapped fonts
- Scalable engine
- Revolving media hub
- Media window
- 16 MB RAM (optional)
- 8 MB flash ROM
- Options easily field-installed
- Honeywell CD-ROM (contains Windows® print drivers and manuals)
- MCL Enabled
- Optional R series RFID and RFID ready printers
- Real-time clock
- Secure digital input (SDID) card slot-SDID flash memory card

APPROVALS



Specifications

Print Speed:

H-4310(x): 2 in to 10 in per second
 H-4212(x): 2 in to 12 in per second (50.8 to 304.8 mm)
 in 0.5 in (0.01 mm) programmable increments

Resolution:

H-4212x-200 dpi
 H-4310x-300 dpi

Maximum Print Width/Length:

Width: 4.10 in (H-4212x) 4.16 in (H-4310x)
 Length: 0.25 in to 99 in (6 mm to 2475 mm) 0.75 in
 (19 mm) minimum print length with optional
 present sensor

Media Width:

1 in to 4.65 in (25 mm to 118 mm)

Supply Roll:

8 in (203 mm) maximum diameter on 3 in (76 mm) core
 Fan-fold stock accepted from rear and bottom
 of printer

Ribbons:

Industry standard ribbon widths; 1 in (25 mm) ribbon
 core, 1,968 ft (600 m) in length

MCL:

Macro Command Language allows printer to control
 the printing application

Dimensions:

H-4212 (H x W x D): 13.0 x 12.6 x 18.9 in
 H-4310 (H x W x D): 16.37 x 12.51 x 18.83 in
 RFID printers (contact Rice Lake)
 CABINET: Metal construction, clear side window

Bar Codes:

Code 3 of 9, Interleaved 2 of 5, Code 128,
 Codabar, UPC-A, UPC-E, UPC 2 and 5 digit
 addendums, EAN-8, EAN-13, EAN 2 and 5 digit
 addendums, Code 93, Plessey, UCC/EAN
 Code 128, Postnet, PDF 417, UPS MaxiCode,
 Datamatrix, FIM, Telepen, HIBC, Aztec, TLC39,
 QR Code, PDF417, USD-8, Micro PDF41, 7,
 RSS, USPS-4

Graphics Support:

.PCX, .BMP and .IMG files

Memory:

8 MB flash memory; 16 MB DRAM memory

Interfaces:

Centronics® parallel port (IEEE 1284 compliant),
 RS232/422 at 2400 BPS to 38400 BPS, Ethernet, USB

Power Source:

Auto-sensing 115, 230 VAC 50/60 Hz; specify
 appropriate power cord when ordering

Operating Temperature:

32° F to 100° F (0° C to 38° C)

Approvals:

UL listed, CSA certified, CE marked, FCC Class A emis-
 sions standard, TUV-GS safety standards, RoHS and
 WEE compliant

Weight:

47 lb

Warranty:

One-year limited warranty on parts
 One-year or 1 million linear inches
 on original print head
 90 days on replacement print head.

Honeywell H-4212 / H-4310

Direct Thermal/Thermal Transfer Label Printer

Part Number/Price

Part #	Description	Est. Weight	Price
H-4212			
96885	Label printer, H-4212X, direct/thermal transfer, internal rewind 203 dpi	47 lb	\$3,330.00
H-4310			
96886	Label printer, H-4310X, direct/thermal transfer, internal rewind 300 dpi	54 lb	\$3,530.00

Options/Accessories

Part #	Description	Price
96940	Metal thermal transfer option (coated side in/out)	\$200.00
96941	HD peel mechanism and present sensor (requires internal rewinder)	\$195.00
96942	Basic peel and present sensor (requires internal rewinder)	\$100.00
96943	Powered internal rewinder, full roll	\$325.00
96952	Present sensor only option	\$95.00
96954	Internal ILPC font kit-CG times	\$10.00
96955	Honeywell rfNet Internal 802.11b Wi-Fi card	\$525.00
68517	External rewinder/unrewinder DMX	\$495.00
96956	Standard cutter kit for 10 mil stock	\$1,395.00
53913	Expansion board 8 MB flash	\$165.00
64889	I/O expansion Kanji	\$165.00
Label Stock/Ribbon (W x L)		
21776	Direct thermal, 3 x 3 in, 8 in diameter with perf., 2,000/roll	\$40.25/roll
150921	Direct thermal, 4 x 6 in, 6 in diameter with perf., 460/roll	\$30.50/roll
25975	Direct thermal, 4.25 x 2.5 in, 6 in diameter with perf., 1,095/roll	\$25.65/roll
21785	Thermal transfer, 2 x 1 in, 8 in diameter, 5,500/roll	\$12.95/roll
21788	Thermal transfer, 4 x 6 in, 8 in diameter, 1,000/roll	\$17.90/roll
20573	Thermal transfer, 4 x 6.5 in, 8 in diameter, 900/roll	\$19.20/roll
126629	Thermal kit, (4) 4 in labels, (2) 4 in ribbons and 1 cleaning card	\$100.95
34056	Ribbon (black), 4 in, 1,181 ft wax	\$25.25/roll
Print Head		
96957	Print head 203 dpi (H-4212x)	\$450.00
96958	Print head 300 dpi (H-4310x)	\$695.00
Cables		
15547	Blunt end, 25-Pin D-sub male RS-232 serial interface cable (Rice Lake indicators)	\$65.00
41502	PC to printer DB9 AT-style interface cable	\$55.00
79074	USB-A (male) to USB-B (male) cable, 6 ft	\$30.00
64794	RS-232 DB9FM/M null modem	\$65.00

Note: The following models are available by special order.

- H-6210= 6 in wide, 203 dpi
- H-6308= 6 in wide, 300 dpi
- H-4408= 4 in wide, 400 dpi
- H-4606= 4 in wide, 600 dpi

Honeywell DMXREW1

Label Rewinder/Unwinder



Standard Features

- Rewinds or dispenses label rolls up to 4 in (101.6 mm) wide, up to 8 in (203 mm) in diameter at 10 in (254 mm) per second
- Adjustable core holder
- Coreless rewinding
- Steel construction
- Anti-slip feet
- Constant adjustable Torque™ technology
- Bidirectional operation
- ON-OFF start/stop switch
- Inner label flange to keep edge of label web aligned as labels are rewound
- Compatible with all Honeywell I Series and Rice Lake SURVIVOR® SST printers

APPROVALS



Specifications

Label Width:

Up to 4.5 in (113 mm)

Maximum Label Roll Weight:

8.5 lb (3.9 kg)

Label Roll Diameter:

Up to 8 in (200 mm)

Core Diameter:

Use any cardboard core from 1 in to 4 in (25 mm to 102 mm)

Speed:

Up to 10 ips (250+ mm/sec)
Switch adjustable rewind force
No adjustments are required

Start/Stop:

Convenient ON-OFF switch

Direction:

Bidirectional

Power Requirements:

115 VAC 60 Hz

Overall Size:

(H x W x D): 9 x 6 x 11 in (229 x 152 x 279 mm)

Weight:

13 lb (5.9 kg)

Approvals:

UL listed, CSA certified

Warranty:

One-year limited warranty on parts and labor

Part Number/Price

Part #	Description	Est. Weight	Price
68517	Honeywell REW1 label rewinder/unwinder, 115 VAC	14 lb	\$495.00

Specifications

Interface:

Built-in USB and serial interface; built-in USB and Ethernet, or built-in USB and Wireless LAN

Data Buffer:

Receive buffer: Selectable as 45 bytes or 4 KB using the DIP switch

Paper Dimensions:

80 mm: 3.13 in x 3.27 in diameter or 58 mm: 2.26 in x 3.27 in diameter

Weight:

1.6 kg (3.53 lb)

Color:

Gray

Paper Thickness:

55-80 µm

Print Speed:

300 mm/s (11.81 in/s)

Safety Standards:

EMI: FCC/ICES-003 Class A

Safety standards: UL60950-1/CSA C22.2 No.60950-1

Power:

24 VDC ±7%

Power Consumption:

Approx. 1.8A (mean)

Temperature:

Operating : 31° F to 113° F (5° C to 45° C)

Storage: 14° F to 122° F (-10° C to 50° C)

Reliability:

MTBF: 360,000 hours

MCBF: 70 million lines

Overall Dimensions:

(W x D x H): 5.71 x 7.68 x 5.83 in (145 x 195 x 148 mm)

Warranty:

One-year warranty



Standard Features

- High-speed printing of both text and graphics (up to 300 mm/second)
- True grayscale image printing
- Best-in-class reliability
- Convenient drop-in paper loading, auto cutter and status LEDs
- ENERGY STAR® qualified
- Accommodates 58 mm or 80 mm paper roll
- Paper saving print features
- Improved cover protects from dust and debris
- OS support for Microsoft® Windows® 7, Vista, XP, 2000; Mac OS X v10.4, v10.5, v10.6 (Power PC/Intel Processor) and Linux

Part Number/Price

Part #	Description	Price
117233	TM-T88V, RS-232 and USB, PS-180 Power supply	\$580.00
117234	TM-T88V, USB and Wireless Ethernet, 802.11 B PS-180 Power supply	\$825.00

Options/Accessories

Part #	Description	Price
23112	Power supply, PS-180	\$110.00
69917	One-ply thermal, (W) 3.125 in (75.44 mm, 2.97 in dia.) 7/16 core 230 ft	\$5.00
83007	Parallel Option connect-it cartridge	\$62.00
15568	25-Pin D-sub male to 25-Pin D-sub male RS-232 serial interface cable	\$65.00
15547	Blunt end, 25-Pin D-sub male RS-232 serial interface (Rice Lake indicators)	\$65.00
Consult	Custom RS-232 serial cable	Consult
79074	USB-A (male) to USB-B (male) cable, 6 ft	\$30.00
167545	TM88IV and V printhead	\$125.00

EPSON® TM-U220

Tape Printer



Standard Features

- Nine-pin dot matrix print head
- High-speed 4.7 to 6.0 lines per second printing
- Drop-in paper set and auto paper loading
- Automatically transmits changes in printer status
- RS-232
- Optional connect-it cartridges for parallel, USB, 10 Base-T
- Uses MI88D mechanism

APPROVALS



Specifications

Print Speed:

Approximately 4.7 lines per second

Column Capacity:

40/42 or 33/35 columns

Characters Per Line:

40 characters

Print Area:

3 in (76.2 mm) W

Character Formation:

7 x 9 and 9 x 9 dot matrix

Character Height:

0.12 standard font

Character Set:

95 alphanumeric characters,
37 international characters,
128 x 12 graphic characters

Line Spacing:

0.17 in (4.32 mm)

Print Head Life:

Approximately 100 million strokes/pin

Form Thickness:

0.002 in to 0.003 in (0.06 mm to 0.085 mm)

Ribbon:

Cassette-type purple ribbon. Ribbon life is approximately 1.5 million characters (continuous prints). Black ink also available.

Serial Interfaces:

RS-232 compatible (25-Pin D-sub) or USB model

Baud Rates:

4800, 9600

Parity:

7 or 8 bits, none, even or odd

Operating Temperature:

32° F to 122° F (0° C to 50° C)

Stop Bits:

One or more

Handshaking:

DTR/DSR or XON/XOFF control selectable

Overall Dimensions:

Type A (W x D x H): 6.3 x 11.3 x 6.2 in
(160 x 286 x 157.5 mm)

Type D (W x D x H): 6.3 x 9.7 x 5.4 in
(160 x 248 x 138.5 mm)

Approvals:

UL listed, CSA-certified, CE marked

Warranty:

Two-year limited warranty (includes print head)

Part Number/Price

Part #	Description	Est. Weight	Price
81076	TM-U220D, RS-232, 115/230 VAC, gray	10 lb	\$420.00
81077	TM-U220A, internal rewind and cutter, RS-232, 115/230 VAC, gray	10 lb	\$625.00
164387	TM-U220D, USB, 115/230 VAC, gray	10 lb	\$450.00

Options/Accessories

Part #	Description	Price
83007	Parallel option connect-it cartridge	\$62.00
35666	Protective dust cover	\$60.00
31296	Ink cartridge (purple)	\$12.00
66499*	Ink cartridge (black and red)	\$12.00
69916	One-ply Bond paper roll, (W x L) 3 in x 150 ft (76.2 mm x 45.7 m, 3 in) OD	\$5.00/roll
69915	Two-ply Bond paper roll, (W x L) 3 in x 90 ft (76.2 mm x 27.4 m), white/canary yellow 3 in OD	\$7.00/roll
35667	Additional operating manual	\$16.00
72309	Power supply, 12 VDC vehicle cigarette plug	\$185.00
23112	115 VAC power supply (included with printer)	\$110.00
Cables		
15568	25-Pin D-sub male to 25-Pin D-sub male RS-232 serial interface cable	\$65.00
15547	Blunt end, 25-Pin D-sub male RS-232 serial interface cable (Rice Lake indicators)	\$65.00

Interfaces to: Rice Lake indicators with a serial port screw terminal connection. Consult custom 20 mA/RS-232 serial interface cable \$100.00 Custom cables are designed to interface with your specific equipment. Please specify equipment model number and connector type. Standard cable length is 5 ft. \$2.00 charge for each additional foot.

**Red/Black ribbon to turn on ASCI code-27,1,14,48 ON 27,1,14,49 OFF*

EPSON® TM-U295

Ticket Printer



Standard Features

- High-speed 1.9 to 2.3 lines per second printing
- Single copy or up to four-part multicopy ticket printing
- Functions in slave capacity, printing information sent via RS-232

APPROVALS



Specifications

Print Speed:

1.9 to 2.3 lines per second (5 x 7 character, 3 dot line spacing)

Column Capacity:

35/42 columns

Characters Per Line:

35 standard font

Print Area:

2.59 in W (65.8 mm W)

Character Formation:

5 x 7 and 7 x 7 dot matrix

Character Height:

0.11 standard font

Character Set:

Full 96-character ASCII; with software control, 32 international characters, 128 x 2 graphic characters

Line Spacing:

0.16 in (4.06 mm) software programmable in 1/60 in units

Print Head Life:

Approximately 100 million strokes/pin

Form Thickness:

Single-ply: 0.003 in to 0.009 in (0.08 mm to 0.23 mm)
Copy paper: 0.003 in to 0.014 in (0.08 mm to 0.36 mm)

Ribbon:

Cassette-type purple ribbon. Ribbon life is approximately 1.5 million characters (continuous prints). Black ink also available.

Serial Interfaces:

RS-232 compatible (25-Pin D-sub)

Baud Rates:

1200, 2400, 4800, 9600, selectable

Parity:

7 or 8 bits, none, even or odd

Stop Bits:

1 or more

Handshaking:

DTR/DSR or XON/XOFF control selectable

Overall Dimensions:

(W x D x H): 7.08 x 7.49 x 3.99 in (180 x 190.5 x 101.5 mm)

Approvals:

UL listed, CSA certified, CE marked

Warranty:

One-year limited warranty (includes print head)

Part Number/Price

Part #	Description	Est. Weight	Price
23113	TM-U295 Ticket Printer, RS-232, 115/230 VAC with power supply, cool white	9lb	\$615.00
35891	TM-U295 Ticket Printer, 115/230 VAC with RS-232 and power supply, 25DB to blunt end cable, cool white	9lb	\$660.00
33816	TM-U295 Ticket Printer, RS-232, 24 VDC, cool white	9lb	\$585.00

Options/Accessories

Part #	Description	Price
29582	Protective dust cover	\$55.00
29584	Ink cartridge (purple) ERC-27	\$12.00
29583	Ink cartridge (black) ERC-27B	\$12.00
23112	Power supply	\$110.00
34344	Additional operating manual	\$20.00
72309	Power supply, 12 VDC vehicle cigarette plug	\$185.00
Cables		
15568	25-Pin D-sub male to 25-Pin D-sub male RS-232 serial interface cable	\$65.00
15547	Blunt end, 25-Pin D-sub male RS-232 serial interface cable (Rice Lake indicators)	\$65.00
41279	25-Pin D-sub male to 9-Pin D-sub male, RS-232 with handshaking	\$65.00
32810	25-Pin D-sub male to 8-Pin D-sub male, RS-232 with handshaking	\$65.00
Consult*	Custom 20 mA/RS-232 serial interface cable	\$100.00

*Custom cables are designed to interface with your specific equipment. Please specify equipment model number and connector type.
Standard cable length is 5 ft. \$2.00 charge for each additional foot.

EPSON® TM-U590

Ticket Printer



Standard Features

- High-speed 2.8 lines per second printing for 88 columns of print; 4.9 lines per second printing for 40 columns
- Single copy and up to five-part
- Wide slip capability of A4 size documents
- Functions in slave capacity, printing information sent via RS-232
- 5.2in wide print area

APPROVALS



Specifications

Print Method:

Nine-pin, serial impact dot matrix

Font:

7 x 9 and 9 x 9

Column Capacity:

88/66 columns

Character Size:

(W x H): 0.05 x 0.12 in/0.06 x 0.12 in (1.3 x 3.1 mm/1.6x 3.1 mm)

Character Set:

Alphanumeric: 95

International: 32

Graphic: 128 x 10

Characters Per Inch: 16.7 CPI/12.5 CPI

Serial Interfaces:

RS-232/Bidirectional parallel/RS-485

Data Buffer:

4K/69 bytes

Paper Dimensions:

(W x L): 2.76 x 2.76 in/8.26 x 11.69 in
(70 x 70 mm/210 x 297 mm)

Paper Thickness:

0.003 in to 0.014 in (0.09 mm to 0.36 mm)

Copy Capabilities:

One original and four copies

Power:

24 VDC \pm 10%

Power Consumption:

Approx. 43 W

Drawer Kickout Device Function:

Two drives

Ribbon:

ERC-31 (purple)

Overall Dimensions:

(W x D x H): 9.92 x 10.47 x 7.28 in
(252 x 266 x 185 mm)

Approvals:

CE marked, FCC class A, VCC #1,
UL and C-UL listed, TUV

Warranty:

One-year limited warranty (includes print head)

Part Number/Price

Part #	Description	Est. Weight	Price
68502	TM-U590 Ticket Printer, RS-232 with power supply, 115/230 VAC, cool white	12lb	\$1,095.00
128726	TM-U590 Ticket Printer, RS-232 with European power supply, 115/230 VAC, cool white	12lb	\$1,130.00
164391	TM-U590, USB, with 115/230 VAC power supply, cool white	12lb	\$1,250.00

Options/Accessories

Part #	Description	Price
68525	Ink cartridge (purple) ERC-31	\$12.00
104145	Ink cartridge (black) ERC-31B	\$12.00
23112	Power supply, U.S. version PS-180	\$110.00
128746	Power supply, European version of PS-180	\$135.00
111840	Protective dust cover	\$65.00
68562	Additional operating manual	\$12.00
68725	Technical manual	\$35.00
72309	Power supply, 12VDC vehicle cigarette plug	\$185.00
Cables		
15568	25-pin D-sub male to 25-pin D-sub male RS-232 serial interface cable	\$65.00
15547	Blunt end, 25-Pin D-sub male RS-232 serial interface cable (Rice Lake indicators)	\$65.00
41279	25-pin D-sub male to nine-pin D-sub male, RS-232 with handshaking Interfaces to: Rice Lake indicators with a serial port screw terminal connection	\$65.00
32810	25-pin D-sub male to eight-pin D-sub male, RS-232 with handshaking Interfaces with DC-190, DC-100, DC-200, DC-300	\$65.00
Consult	Custom 20 mA/RS-232 serial interface cable	\$100.00

Custom cables are designed to interface with your specific equipment. Please specify equipment model number and connector type.
Standard cable length is 5 ft. \$2.00 charge for each additional foot.

GoDEX® DT2x/DT4x/G500

Label Printer



G500

DT2x

DT4x

Standard Features

- Auto language emulations GEPL, GZPL
- Free GoLabel design software for EZPL
- 203 DPI (8 dot/mm)
- Drop-in media loading
- USB or RS-232 interface
- Plain, gap label, black, mark or fanfold label
- Label length detection
- Direct thermal
- Model G500- direct thermal/thermal transfer
- 32 Bit CPU
- Serrated tear bar

APPROVALS



Specifications

Print Speed:

DT2x/DT4x: up to 7 ips
G500: 5 ips

Print Length:

Minimum: 0.16 in
Maximum: 68 in

Print Width:

DT2x: 2.12 in
DT4x/G500: 4.25 in

Media:

Continuous form, gap labeling, black mark sensing and punched sensing
Label roll O.D. max: 5.0 in
Real-time Clock:
DT2x/DT4x: standard

Core:

1 in, 1.5 in
Thickness: 0.06 mm to 0.20 mm

Ribbon (G500):

Core: 1 in
Length: 300 m
Max ribbon roll O.D.: 2.67 in
Wide: 1.18 in to 4.33 in

Printer Language:

GZPL or GEPL, EZ PL auto switch

Resident Fonts:

11 resident alphanumeric fonts (included OCR A and B) are expandable 8 times horizontally and vertically. All bit mapped fonts in 8 orientations.

Bar Codes:

Code 39, Code 93, Code 128 (subset A, B, C), UCC/EAN - 128 K-Mart, UCC/EAN - 128, UPC A/E (add on 2 and 5), 2 of 5, EAN 8/13 (add on 2 and 5), Codabar, Post Net, EAN 128, DUN 14, MaxiCode, HIBC, Plessey, Random Weight, Telepen, FIM, China Postal Code, RPS 128, PDF 417, Datamatrix code, QR Code

Dimensions:

DT2x (L x H x W): 8.58 x 6.77 x 3.94 in (218 x 172 x 100 mm)
DT4x (L x H x W): 8.58 x 6.53 x 6.61 in (218 x 166 x 168 mm)
G500 (L x H x W): 11.2 x 6.8 x 8.9 in (285 x 171 x 226 mm)

Interfaces:

Baud rate 4800 to 115200; DB9
USB port U2.0 (B-type)
Ethernet (RJ-45)

Memory:

8 MB flash - DT2x, DT4x and G500

Power:

Auto switching 100/240 VAC 50/60 Hz

Environment:

Operation: 41° F to 104° F (5° C to 40° C)
Storage: -4° F to 122° F (-20° C to 50° C)

Humidity:

Operation: 30% to 85% non-condensing, free air
Storage: 10% to 90% non-condensing, free air

Approvals:

CE (EMC), FCC Class A, CB, CUL, CCC

Warranty:

Two-year limited warranty

Part Number/Price

Part #	Description	Est. Weight	Price
167515	DT2x 2 in direct thermal, time and date 10/240 VAC printer	2.65 lb	\$345.00
167516	DT4x 4 in direct thermal, time and date 110/240 VAC printer	3.3 lb	\$395.00
132425	G500 4 in direct/thermal transfer, 110/240 VAC printer	6 lb	\$585.00
DT2x			
167626	Label peeler, black	—	\$39.00
167627	Cutter, black	—	\$200.00
107532	Print head	—	\$110.00
DT4x			
167628	Label peeler, black	—	\$45.00
167629	Cutter, black	—	\$200.00
150743	Print head	—	\$195.00
107638	Guardian enclosure	—	\$1,150.00
G500			
150744	Label peeler, black	—	\$40.00
150745	Cutter	—	\$425.00
150746	Print head	—	\$195.00
107639	Guardian enclosure	—	\$1,150.00
Cables For All Printers			
41276	6 ft serial cable DB9 M to blunt end (Rice Lake indicators)	—	\$65.00
79074	USB-A (male) to USB-B (male) cable, 6 ft	—	\$30.00
64661	6 ft serial cable DB9 M to 8-Pin DIN	—	\$65.00
64660	6 ft serial cable DB9 M to DB9 male	—	\$65.00
Consult	Custom RS-232 serial cable	—	\$100.00

Options/Accessories

Part #	Description	Price
38941	Cleaning pen for open print head printers 12/box	\$57.00
38794	Cleaning cards, (W x L) 2 x 6 in 25 per box for RL-22DT	\$50.00
35664	Cleaning cards, (W x L) 4x 6 in for RL-42DT and RL-42TT	\$50.00
111085	Power supply, printers	\$158.00
15438	Power cord, detachable	\$17.75
Label Stock/Ribbon		
DT2x		
110347	Direct thermal, (W x L) 2.25 x 1.25 in, 5 in diameter with perf., 2,100/roll	\$12.80/roll
40332	Direct thermal, (W x L) 2.25 x 2 in, 5 in diameter with perf., 1,445/roll	\$14.25/roll
110348	Direct thermal, (W x L) 2.25 x 3 in, 5 in diameter with perf., 950/roll	\$13.50/roll
110349	Direct thermal, (W x L) 2.25 x 4 in, 5 in diameter with perf., 700/roll	\$10.80/roll
65617	Direct thermal, (W x L) 2.25 x 4.5 in, 5 in diameter with perf., 600/roll	\$14.60/roll
110346	Direct thermal, (W x L) 1.20 x 0.85 in, 5 in diameter with perf., 2710/roll	\$8.25/roll
47761	Direct thermal, (W x L) 2.5 x 121 ft, continuous 12 rolls/case	\$66.00/case
DT4x		
53251	Direct thermal, (W x L) 4 x 3 in, 5 in diameter with perf., 930/roll	\$23.35/roll
40331	Direct thermal, (W x L) 4 x 4 in, 5 in diameter with perf., 745/roll	\$23.35/roll
37345	Direct thermal, (W x L) 4 x 6 in, 5 in diameter with perf., 450/roll	\$20.00/roll
G500		
53261	Thermal transfer, (W x L) 4 x 3 in, 5 in diameter with perf., 930/roll	\$18.05/roll
178965	Ribbon (black), 4.3 in wax/resin, 984 ft length	\$25.00/roll
110537	Ribbon (black), 2.5 in wax/resin, 984 ft length	\$4.50/roll

Okidata 186 Turbo

Microline Printers



Standard Features

- Vertical tabs
- Long-lasting, self-inking ribbon cartridge
- Bit image graphics for plotting charts, graphs and drawings
- Full ASCII character set
- Friction and adjustable pin feed paper handling
- Nine-pin, long-life print head
- RS-232 interface or USB
- Near letter-quality printing at 50 characters per second
- Superscripts, subscripts and underlining
- Bottom, rear or top feed

Part Number/Price

Part #	Description	Est. Weight	Price
90969	Okidata 186 Turbo Printer with RS-232 or USB 115 VAC	10 lb	\$660.00

Options/Accessories

Part #	Description	Price
20236	Tractor feed kit with friction rollers	\$88.00
20664	Ribbon cartridge black	\$8.00
21208	Protective dust cover	\$65.00
41364	Additional operating manual	\$35.00
Cables		
15547	Blunt end, 25-Pin D-sub male RS-232 serial interface cable (Rice Lake indicators)	\$65.00

Specifications

Print Method:

Nine-pin (0.34 mm dia.) serial impact dot matrix

Graphics Resolution:

240 x 216 maximum

Print Speed* (CPS):

NLQ: 62; Utility: 250; High speed draft: 333; Super Speed Draft: 375

Feed Rate:

2.0 ips

Emulations:

IBM® 2480 Epson E6C/P or OKI® Microline®

Interface:

USB or RS-232

Receive Buffer:

One line buffer

Paper Input:

Cut sheet, 7.2 in to 8.5 in W
(182.9 mm to 215.9 mm W)
Bottom feed with pull tractor option

Number Of Copies:

Five copies

Pin Feed:

Continuous, 9.5 in to 10.5 in wide
(241.3 mm to 266.7 mm wide)

Paper Thickness:

0.014 in (0.35 mm) maximum

Paper Path:

Bottom, rear or top

Paper Weight:

Cut sheet 16 lb to 24 lb (7.2 kg to 10.8 kg),
Continuous 16 lb to 20 lb (7.2 kg to 9.1 kg)

Electrical:

120 VAC: ±10%; 220/240 VAC: ±10%

Power Consumption:

Operating: 35 W
Idle: 7 W

Reliability (MTBF):

70,000 hours

Print Head Life:

200 million characters

Ribbon Type:

Black cartridge (2 million characters nominal life)

Operating Temperature:

40° F to 104° F (4° C to 40° C) at 25% to 80% relative humidity

Overall Size:

(W x D x H): 14.2 x 10.8 x 3.2 in (360.7 x 274.3 x 81.3 mm)

Est. Ship Weight:

10 lb (4.5 kg)

Warranty:

One-year limited warranty (includes print head)

* Print speeds apply to all pitches (10, 12, 17.1, and 20 cpi)

** Requires optional pull tractor (part #41224)

Specifications

Print Method:

Okidata 320/420: 9-Pin (0.34 mm dia.) serial impact dot matrix
Okidata 390: 24-Pin (0.20 mm dia.) serial impact dot matrix

Graphics Resolution:

Okidata 320/420: 240 (H) x 216 (V) dpi maximum (Epson®/IBM®)
Okidata 390: 360 (H) x 360 (V) dpi maximum (Epson/IBM AGM)
Print Speed** (cps):
Okidata 320: NLQ: 75; Utility: 300;
High Speed Draft: 390;
Super Speed Draft: 435
Okidata 390: LQ: 105; Utility: 315;
Super Speed Draft: 390 (15 cpi)
Okidata 420: NLQ95;
High Speed Draft: 5p 510; Utility: 570, Super 570

Feed Rate:

5.0 ips

Emulations:

Okidata 320: Epson EX-PPR II and OKI® Microline®
Okidata 390: Epson ESC/P2, IBM ProPrinter® and IBM AGM
Okidata 420: Epson Fx IMB Pro Point Micro

Interface:

Okidata 320/390/420: IEEE 1284 bidirectional parallel; Windows® 95 plug and play compatible, USB
Okidata 390: Centronics® and IEEE 1284 bidirectional parallel

Receive Buffer:

Okidata 320: 28 K
Okidata 390: 23 K
Okidata 420: 128 K

Code Pages:

Standard ASCII; Epson character set I and II; IBM character set I, I and All; Code Page 850, 860, 863, 865, 437; BRASCII and ABICOMP

Resident Fonts:

Okidata 390: LQ: Courier, Letter Gothic, Orator, Prestige, Roman and Swiss/Bold; Utility: Gothic

Scaleable Fonts:

Okidata 320/ 420: Courier, Gothic (22-216 pt. in 1 pt. increments)
Okidata 390: Courier, Roman and Swiss™ (8-64 pt. in 1 pt. increments)

Bar Codes:

Code 39, UPC A, UPC E, EAN 8, EAN 13, Interleaved 2 of 5, Code 128 (A, B, C), PostNet™

Paper Input:

Single/multi-part, continuous, cut sheet, envelopes, card stock, labels
Bottom feed with pull tractor option

Number Of Copies:

Okidata 320: Six
Okidata 390: Four
Okidata 420: Six

Tractor:

3.5 in to 10.5 in wide (88.9 mm to 266.7 mm wide), rear push with zero tear and paper park (optional)

Paper Thickness:

Rear feed: 0.014 in (0.35 mm) maximum;
Bottom feed***: 0.017 in (0.43 mm) maximum, expandable to 0.01 in (.78 mm)

Paper Path:

Bottom, rear or top

Paper Weight:

Cut sheet 16 lb to 24 lb (7.2 kg to 10.8 kg), Continuous 16 lb to 20 lb (7.2 kg to 9.1 kg)



Okidata 320 Turbo Microline

Standard Features

- Vertical tabs
- Long-lasting, self-inking ribbon cartridge
- Bit image graphics for plotting charts, graphs and drawings
- Full ASCII character set
- Friction and adjustable pin feed paper handling

Okidata 320/420 Turbo*:

- Nine-pin, long-life print head (parallel input)
- Centronics®-compatible parallel interface
- Near letter-quality printing at 63 characters per second
- 80 columns with standard characters, 160 columns with condensed characters
- Front access panel for quick and easy control of type size, print quality and other frequently used printer functions

Okidata 390 Turbo:

- 24-Pin, long-life print head
- Supports Windows® 95/98
- Superior, professional quality printer
- Auto-tear accurately positions continuous forms for a clean tear at the perforation
- Three scaleable fonts

Specifications Continued

Electrical:

115 VAC, 230 VAC

Power Consumption:

Okidata 320: Operating: 100 W
Okidata 390: Operating: 43 W Idle: 10 W
Okidata 420: 20,000 hours

Reliability (MTBF):

10,000 hours

Print Head Life:

200 million characters

Ribbon Type:

Black cartridge (2 million characters nominal life)

Operating Temperature:

40° F to 104° F (4° C to 40° C) at 25 to 80% relative humidity

Overall Size:

Okidata 320 and 390 (W x D x H): 15.7 x 13.6 x 4.6 in (398.8 x 345.4 x 116.8 mm)
Okidata 420 (W x D x H): 15.7 x 13.6 x 6.0 in

Est. Ship Weight:

Okidata 320: 16 lb (7.2 kg)
Okidata 390: 15 lb (6.8 kg)
Okidata 420: 17 lb (7.7 kg)

Warranty:

320/390: One-year limited warranty (includes print head)
420: Three-year limited warranty

* Use with CBI

** Print speeds apply to all pitches (10, 12, 17.1, and 20 cpi)

*** Requires optional pull tractor (part #41224)

Okidata 320/390/420 Turbo

Microline Printers

PRINTERS

Part Number/Price

Part #	Description	Est. Weight	Price
126438	Okidata 320 Microline Turbo printer with RS-232 interface, 115 VAC	16 lb	\$960.00
41222	Okidata 320 Microline printer with parallel/USB interface, 115 VAC	16 lb	\$790.00
41223	Okidata 320 Microline printer with parallel/USB interface, 230 VAC	16 lb	\$790.00
75106	Okidata 390 Microline Turbo printer with parallel/USB interface, 115 VAC	15 lb	\$810.00
102959	Okidata 420 Microline Turbo printer with parallel/USB interface, 115 VAC	16 lb	\$825.00

Options/Accessories

Part #	Description	Price
Cables		
15547	Blunt end, 25-Pin D-sub male RS-232 serial interface cable (Rice Lake indicators)	\$65.00
320/420 Turbo Options and Accessories		
41224	Pull tractor kit for bottom-fed continuous forms and push/pull operation	\$98.00
20239	RS-232 input board, older revisions	\$170.00
121454	RS-232 option board, 320 Rev 10	\$170.00
20664	Ribbon cartridge black, 320 and 390	\$8.00
132249	Ribbon cartridge for 420	\$8.00
21226	Protective dust cover	\$65.00
41363	Additional operating manual	\$35.00
75107	Cut sheet feeder	\$490.00
390 Turbo Options and Accessories		
75107	Cut sheet feeder	\$490.00
20239	RS-232 option board, older version	\$170.00
41224	Pull tractor kit for bottom-fed continuous forms and push/pull operation	\$98.00
20664	Ribbon cartridge black	\$8.00

Standard unit has pins on roller for holes on paper

Interfaces to: Rice Lake indicators with a serial port screw terminal connection

www.ricelake.com | Phone: 800-472-6703

RICE LAKE

904

Specifications

Print Method:

Direct thermal

Resolution:

203 dpi (8 dots per mm)

Print Speed:

Up to 3.3 ips

Width:

Up to 4.1 in (104.1 mm)

Fonts:

A wide range of font types and sizes, from 6 to 34 cpi depending on emulation chosen, plus scaling

International Characters:

An expanding catalog available for download. Bar Codes: 39, 128, Intlv 2 of 5, EAN08 and 13, PDF-417 and UPC, depending on emulation chosen

Connectivity:

RS-232

Software:

Printer setup program provides convenient configuration via Windows interface

Emulations:

Emulates many popular printer brands and languages including O'Neil, Zebra CPCL and ZPL, Exttech, IPL, MPL, E-Sim and Printek Mt3. Can be upgraded as new emulations become available

Ingress Protection Rating:

IP54

Print Media:

Paper Type: Direct thermal roll
Roll Size: Maximum roll diameter 2.625 in (6.7 cm) allows roll widths from 3 in to 4.125 in (7.6 cm to 10.5 cm)
Roll Capacity: Approximately 171 ft (52.1 cm) max.
Core Size: 0.75 in (1.9 cm)

Electronics/Power:

Ruggedized screw down-type DB-9 connector for power and I/O
DC Input: 8 to 32 VDC
Overvoltage Protection: 80 VDC for 1 hour.
Failsafe to 180 VDC.
I/O Short Circuit: Tolerant of shorts to ground or DC input

Dimensions:

(L x W x H): 7.7 x 6.6 x 3.1 in (19.56 x 16.76 x 7.87 cm)

Weight:

2.0 lb (0.90 kg)

Memory:

2 MB Flash, 1 MB SRAM. Standard memory supports large and graphic intensive print jobs.

Operating Temperature:

-40° F to 185° F (-40° C to 85° C)

Operating Humidity:

10 to 90% RH (non-condensing)
Rated IP54 per IEC529
Chemical resistant case per SAEJ1455
Operator Controls And Indicators:
4 illuminated icons for general fault, wireless connection, MCR ready and battery status
2 line LCD for system alerts and messages, configuration setup and battery charge
Buttons for power, paper feed and setup menu
Sensors for paper out, black mark detection and door open

Durability and Reliability:

Survives multiple 4 ft drops to concrete (each face) and conforms to IEC 68-2



Standard Features

- Designed for superior resistance to impact and harsh chemicals
- IP54 rated for water and dust resistance
- Rugged, screw down connector for power and data
- Simple drop-in paper loading
- Direct thermal printing
- Wide input voltage range and superior circuit protection
- Onboard weighing, forklift applications
- Data/Power cable and one roll of paper supplied with printer

APPROVALS



Specifications (cont.)

Vibration Resistance:

9.8 grms 24 Hz to 2,000 Hz
MTBF: 10,000 hours in normal use

Approvals:

FCC Class B, CE mark, UL listed AC adapters, E-mark on in-vehicle adapters

Warranty:

One-year printer warranty on the entire printer—case and print head included

Part Number/Price

Part #	Description	Est. Weight	Price
115527	MtP400si, 4 in direct thermal printer, IP54, RS-232	2 lb	\$1,415.00

Options/Accessories

Part #	Description	Price
115528	Paper roll, thermal 4.125 in wide, 1.625 OD, .75 in core	\$6.30
115529	Universal ball-mount	\$24.00
118713	Uncoiled data/power cable	\$80.00

Star® Micronics SP298

Dot Matrix Ticket Printer



Standard Features

- Top and bottom paper sensing
- AutoSide Loading™ for quick and easy document loading
- Bidirectional serial impact printer capable of printing graphics using a highly reliable nine-pin print head
- Up to 3.1 lines per second printing with bidirectional check mode
- Epson® TM-U295/TM290 compatible with same size footprint and interchangeable power supply, easier paper and ribbon loading
- Single or up to three-part multi-copy ticket printing
- Cash drawer driver

APPROVALS



Specifications

Print Speed:

3.1 lines per second (13 mm/sec)

Print Width:

2.5 in (63 mm)

Line Spacing:

1/6 in, N/144 in Star line mode, 1-60 in-ESC/POS™ mode

Print Head:

Nine-pin

Number Of Columns:

42

Print Direction:

Bidirectional

Paper Width:

3.15 in to 7.17 in (80 mm to 182 mm)

Paper Thickness:

0.004 in to 0.008 in (0.09 mm to 0.2 mm)

Copy Capabilities:

1 original and 2 copies

Paper Sensors:

Top and bottom of form

Ribbon:

Cassette-type purple ribbon. Ribbon life is approximately 2.2 million characters (continuous print).

Printer Reliability:

9 million lines MCBF (CRT)

Print Head Reliability:

70 million characters

Interface:

RS-232 serial interface

Data Buffer:

Star mode: 2 KB or 35 bytes ESC/POS mode: 512 or 35 bytes

Emulation:

Star mode, ESC/POS™ (TM-U295/TM290)

Drawer Kickout Device Function:

2 drivers

Drivers:

Windows® 95/98/2000/NT 4.0, OPOS, JavaPOS™

Operating Temperature:

41° F to 104° F (5° C to 40° C)

Humidity:

10 to 80% RH

Overall Dimensions:

(W x H x D): 7.09 x 7.48 x 7.48 in (180 x 138 x 190 mm)

Approvals:

UL and C-UL listed, TUV

Warranty:

Three-year limited warranty on parts
One-year limited warranty on print head

Part Number/Price

Part #	Description	Est. Weight	Price
69901	SP298 Ticket Printer with RS-232 and power supply, 115/230 VAC (gray)	9 lb	\$600.00
69902	SP298 Ticket Printer with RS-232, 24 VDC (gray) without power supply	9 lb	\$590.00

Options/Accessories

Part #	Description	Price
69921	Ink ribbon (purple)	\$12.00
69903	Power supply, PS-60-24A	\$100.00
72309	Power supply, 12 VDC with cigarette plug (also works with TM-U295)	\$185.00
72471	Star programmer's CD	\$11.00
Cables		
15547	Blunt end, 25-pin D-sub male RS-232 serial interface cable (Rice Lake indicators)	\$65.00
15568	25-pin D-sub male to 25-pin D-sub male RS-232 serial interface cable	\$65.00
72440	25-pin to nine-pin, D-sub female cable	\$65.00

USB and Parallel versions available for quote

Star® SP512/SP542/SP712/SP742

Dot Matrix Printers



Standard Features

- Spill-proof cover
- Single-color highlights
- Power switch cover
- Internal universal power supply
- Serial interface
- Star and ESC/POS emulation
- Black mark sensor
- More than four lines per second print speed
- Auto cutter and tear bar versions
- Prints multiple copies (original and two copies)
- High reliability
- Prints graphics

SP712 Only

- Clamshell design for easy paper loading
- Spill-proof and heat-resistant
- Swappable interfaces available
- Wall mount (option)
- External buzzer option

Specifications SP712/SP742

Print Method:

Nine-pin impact dot matrix

Print Speed:

13RPM

Paper Width:

70 mm and 58 mm (with paper guide)

Emulation:

Star mode, ESC/POS

Power:

110 to 230 VAC

MCBF:

22 million lines

Cutter:

1 million cuts

Dimensions:

(W x H x D): 160 x 152 x 245 mm

Connectivity:

Nine-pin serial, 25-pin serial, parallel, USB, Ethernet, Wi-Fi

Drivers:

2000 XP (L), XP embedded (L), VISTA (G) (32-and 64-bit)

Warranty:

Three-year limited warranty

APPROVALS



Specifications SP512/SP542

Print Method:

Nine-pin impact dot matrix

Print Speed:

4 lines per second at 40 columns
8 lines per second at 16 columns

Number Of Columns:

42 at 16.9 cpi

Paper Width:

2.25 in/3 in (selectable)

Paper Thickness:

0.002 in to 0.003 in (0.07 mm to 0.10 mm)

Copy Capabilities:

Copies: original and 2 copies, maximum 0.007 in (0.20 mm)

Roll Diameter:

3.34 in (85 mm)

Paper Roll Core:

0.47 in (12 mm) ID, 0.70 in (18 mm) OD

Paper Loading:

Semi-automatic

Paper Sensors:

Paper out

Cutter Reliability:

0.5 million cuts

Printer Reliability:

70 million characters

Auto Cutter:

SP542: full and partial cut (software controlled)

Interface:

RS-232 serial

Baud Rates:

4800, 9600, 19200, 38400

Drivers:

Windows® 9x/NT/2000, OPOS, JavaPOS™

Emulation:

Star Mode, ESC/POS™

Drawer Kickout Device Function:

2 drivers

Power Required:

100 to 240 VAC, 50/60 Hz

Overall Dimensions:

(W x D x H): 5.51 x 8.85 x 6.41 in (140 x 225 x 163 mm)

Storage Temperature:

10 to 90% RH

Operating Temperature:

3° F to 104° F (0° C to 40° C)

Approvals:

UL and C-UL listed, TUV

Warranty:

Three-year limited warranty on parts
One-year limited warranty on print head and cutter

Part Number/Price

Part #	Description	Est. Weight	Price
103141	SP712 RS-232 tape printer, tear bar	9 lb	\$350.00
155825	SP712 RS-232 tape printer, tear bar, journal	9 lb	\$425.00
164392	SP712, USB tape printer, tear bar	9 lb	\$390.00
103142	SP742 RS-232 tape printer, cutter	9 lb	\$490.00

Consult factory for models with a parallel interface.

Options/Accessories

Part #	Description	Price
69921	Ink ribbon (purple) SP500, SP2000, SP200, series	\$12.00
103728	Ink ribbon (black), SP700 Series	\$12.00
69916	One-ply paper roll, (W x D) 3 x 3 in, 150 ft roll, Bond, 3 in OD	\$5.00
69915	Two-ply paper roll, (W x D) 3 x 3 in white/canary yellow, 90 ft roll, 3 in OD	\$7.00
72471	Programmer's CD-ROM (includes utility programs and manuals)	\$11.00
121331	Wall mount bracket, SP700 Series	\$30.00
Cables		
15547	Blunt end, 25-pin D-sub male RS-232 serial interface cable (Rice Lake indicators)	\$65.00
15568	25-pin D-sub male to 25-pin D-sub male RS-232 serial interface cable	\$65.00
72440	25-pin to nine-pin D-sub female cable	\$65.00
79074	USB-A (male) to USB-B (male) cable, 6 ft	\$30.00

Star® TSP 847

Receipt Thermal Printer



Standard Features

- Direct Thermal
- Small desktop footprint
- Jam-proof patented cutter with full or partial cut
- Wide area printing
- Zoom raster drive allows letter-sized documents to be printed in 4.4 format
- Logo storage capability

Part Number/Price

Part #	Description	Est. Weight	Price
107617	TSP847D-24 line receipt printer (requires power supply)	5 lb	\$625.00

Options/Accessories

Part #	Description	Price
69903	Power supply, PS-60-24A	\$100.00
72309	Power supply, 12 VDC with car adaptor	\$185.00
107618	Thermal paper 4.4 in wide, 4 in OD	\$10.50
Cables		
15547	Blunt-end 25-pin D-sub male RS-232	\$65.00
15568	25-pin D-sub male to 25 pin D-sub male RS-232 serial interface cable (Rice Lake indicators)	\$65.00
72440	25-pin male to nine-pin female	\$65.00

Specifications

Print Speed:

1,200 dots per second (150 mm/sec)

Print Width:

Max 104 mm

Resolution:

203 dpi

Bar Codes:

Code 39, Interleaved 2 of 5, JAN/EAN/UPC, Code 128, Code 93, Coderbar, GS1-128

Roll Paper:

Paper width 111.5 mm (4.4 in)
Thickness 65 to 150
Diameter 4 in

Emulation:

Star, DP8340

Drivers:

Windows® 9X, 2000, XP, Linux, OPOS, JPOS,
Mac OS X™

Operating Temperature:

41° F to 113° F (5° C to 45° C)

Overall Dimensions:

(W x D x H): 7 x 8.4 x 5.8 in (180 x 213 x 148 mm)

Approvals:

RoHS compliant

Warranty:

Three-year limited warranty

Specifications

Print Speed:

TSP654: 300 mm per second, 60 RPM
TSP743: 7 in (177.8 mm) per second, 60 lines per second at 3 mm per line (180 mm/sec)

Print Width:

TSP654: 80 mm Paper: 2.83 in (80 mm) 58 mm Paper: 2.05 in (52 mm)
TSP743: Standard: 2.83 in (80 mm) Optional: 2.05 in (52 mm), 3.15 in (80 mm)

Line Spacing:

3 mm, 4 mm (1/8 in, 1/6 in)

Resolution:

203 dpi (8 dots/mm)

Number of Columns:

TSP654: 80 mm Paper: 24, 48 or Optional 64 (ESC/POS) 58 mm Paper: 17, 34 or Optional 46 (ESC/POS)
TSP743: Standard: 48, 71 (maximum)

Bar Codes:

TSP654: UPC-A/E, JAN/EAN-8/13, Code 39/93/128, Codabar (NW7), ITF
TSP743: UPC-A/E, JAN/EAN-8/13, Code 39/93/128, Codabar (NW7)

Paper Width:

Adjustable. Standard: 3.15 in (80 mm)
Optional: 2.28 in (58 mm)
TSP743 Optional: 3.25 in (82.5 mm)

Paper Thickness:

TSP654: 0.002 in to 0.003 in (0.065 mm to 0.085 mm)
TSP743: 0.003 in to 0.006 in (0.065 mm to 0.150 mm)

Roll Diameter:

3.5 in (90 mm)

Paper Roll Core:

1/2 in to 1.00 in (12 mm to 25.4 mm)

Paper Path:

TSP654: Internal roll
TSP743: Slot in rear or internal roll

Paper Loading:

"Drop-in and print" and external rear feed

Paper Sensors:

TSP654: Near end, paper out, cover open
TSP743: Near end, paper out, top of form

Printer Reliability:

60 million lines

Cutter Reliability:

TSP654: 0.5 million cuts
TSP743: 2 million cuts

Data Buffer:

8K bytes

Logo Store:

TSP654: 2 M bit
TSP743: 4 M bit

Emulation:

Star line mode, ESC/POS™ (TM-U295/TM290)

Drawer Kickout Device Function:

2 drivers

Auto Cutter:

Full and partial cut

Drivers:

Windows® 95/98/2000/NT 4.0, Windows® legacy printer, OPOS, JavaPOS™, Star Raster Graphics Mode, Linux

Operating Temperature:

41° F to 113° F (5° C to 45° C)

Humidity:

10 to 90% RH (without condensation)



TSP654



TSP743

Standard Features

- 203 DPI (8 dots/mm) print resolution
 - Two-color printing (software enabled)
 - Small footprint
 - Easy load "drop-in and print" paper loading
 - Adjustable paper width
 - Logo storage utility for easy logo data
 - Drawer kickout device function
 - Cutter
 - Easy to change "cartridge-type interface" RS-232 to parallel
 - Swappable communication interface
- TSP743**
- Label printing

APPROVALS



Specifications (cont.)

Overall Dimensions:

TSP654 (W x H x D): 5.59 x 5.16 x 7.83 in (142 x 131 x 199 mm)
TSP743 (W x H x D): 5.79 x 5.83 x 8.39 in (147 x 148 x 213 mm)

Approvals:

UL and C-UL listed, FCC, TUV

Warranty:

Three-year limited warranty on parts
One-year limited warranty on print head and cutter

Star® TSP654II/TSP743 II

Direct Thermal Printers

Part Number/Price

Part #	Description	Est. Weight	Price
69910	TSP654II direct thermal, RS-232 with power supply, 115/230 VAC, wall mount bracket	7 lb	\$460.00
69907	*TSP743II direct thermal transfer, RS-232 with power supply, 115/230 VAC	8 lb	\$600.00
69908	*TSP743II direct thermal transfer, RS-232 only, 24 VDC	8 lb	\$590.00
85929	*TSP743II direct thermal, parallel without power supply	8 lb	\$590.00

* If using for labels with black mark, request printer to be configured by Rice Lake Weighing Systems

Options/Accessories

Part #	Description	Price
TSP654		
69903	Power supply, PS-60-24A	\$100.00
69917	One-ply thermal, (W) 3.125 in (75.44 mm, 2.97 in dia.) 7/16 core 230 ft	\$5.00
107041	MaxStick receipt paper for TSP654 3 1/8 wide 150 ft long adhesive strip	\$18.75
72309	Power supply, 12 VDC with vehicle cigarette lighter	\$185.00
71355	Parallel cartridge option	\$60.00
TSP743		
69919	Wall mount bracket	\$80.00
70598	Label, DTL, (W x L x D) 3 x 1 x 4 in, with black line timing mark 1,600 labels/roll	\$22.00
70597	Label, DTL, (W x L x D) 3 x 2 x 4 in, with black line timing mark 900 labels/roll	\$22.00
72471	Star programmer's CD	\$11.00
Cables		
15547	Blunt end, 25-pin D-sub male RS-232 serial interface cable, (Rice Lake indicators)	\$65.00
15568	25-pin D-sub male to 25-pin D-sub male RS-232 serial interface cable	\$65.00
72440	25-pin to nine-pin D-sub female cable	\$65.00

Specifications

Resolution:

203 dpi (8 dpmm)

Print Length:

0.005 in to 39.0 in (0.125 mm to 991 mm)

Print Width:

0.005 in to 2.2 in (0.125 mm to 56 mm)

Print Speed:

2 in to 4 in per second (ips)

Bar Codes:

Code 11, Code 39, Code 93, Code 128, UPC-A, UPC-E, EAN-8, EAN-13, EAN-14, UPC-A and UPC-E with EAN 2 or 5 digit extensions, Plessey, POSTNET, Standard 2 of 5, Industrial 2 of 5, Interleaved 2 of 5, LOGMARS, MSI, Codabar, and GS1 DataBar (formerly RSS), PDF417, MicroPDF417, Code 49, Maxicode, Codablock, Data Matrix, QR code, Aztec

Media Specifications:

Width: 1.00 in to 2.36 in (25 mm to 60 mm)

Label Length:

Minimum: 0.38 in (9.7 mm)

1.0 in with optional cutter

Maximum 39 in (991 mm)

Inner Core: 1.0 in

Max roll diameter: 5 in

Sensing: gap, black line, notch

Type: roll-fed, fan fold, die cut or continuous with or without black mark, tag stock

Communication Specifications:

Centronics parallel (option)

USB

10/100 Ethernet (option)

RS-232 (TLP-standard, ZD 410-optional)

Power:

100-240 VAC, 50-60 Hz, U.S. power cord

Operating Temperature:

-40° F to 105° F (-40° C to 40.5° C)

Dimensions:

(L x W x H): 5.3 x 9.5 x 7.0 in
(135 x 241 x 178 mm)

Weight:

2.7 lb

Warranty:

One-year limited warranty



Standard Features

- Print speeds of 4 in per second (102 mm)
- 203 dpi print resolution (8dots/mm)
- Open ACCESS™ design for easy media loading
- Direct thermal (ZD 410) and thermal transfer (TLP) printing of barcodes, text and graphics
- Fully enclosed 5.0 in (127 mm) media compartment
- Double-walled ABS case construction
- EPL and ZPL® programming language, co-resident
- 32-bit RISC processor
- 8 MB SDRAM, 4 MB flash memory
- Zebra E3 print head energy control
- Auto-calibration of media
- Five resident expandable EPL2® fonts
- Auto-switching 100 V and 240 V power supply
- Linear and 2-D bar code symbologies
- Transmissive and reflective media sensing
- Head-up sensor
- Tear-off mode
- Certified Microsoft® Windows® drivers

Part Number/Price

Part #	Description	Est. Weight	Price
178855	ZD 410 Printer, 203 dpi, direct thermal, USB, 120 VAC U.S. power cord	6.0 lb	\$395.00
112875	TLP2824 Plus, 203 dpi, thermal transfer/direct, USB and Serial, 120 VAC U.S. power cord	6.0 lb	\$495.00

Parallel and Ethernet models available by special request

Options/Accessories

Part #	Description	Price
178856	RS-232 option card (ZD 410 only)	\$25.00
178857	10 - 100 Ethernet option card (ZD 410 only)	\$125.00
38941	Cleaning pens for open print head printers, 12/box	\$57.00
38794	Cleaning cards (W x L) 2 x 6 in, 25/box	\$50.00
Label Stock/Ribbon		
110346	Direct thermal, (W x L x D) 1.2 x .85 x 5 in with perf., 2,700/LPR	\$8.25/roll
110347	Direct thermal, (W x L x D) 2.25 x 1.25 x 5 in with perf., 2,100/LPR	\$12.80/roll
40332	Direct thermal, (W x L x D) 2.25 x 2 x 5 in with perf., 1,445/LPR	\$14.25/roll
110348	Direct thermal, (W x L x D) 2.25 x 3 x 5 in with perf., 950/LPR	\$13.50/roll
110349	Direct thermal, (W x L x D) 2.25 x 4 x 5 in with perf., 700/LPR	\$10.80/roll
65617	Direct thermal, (W x L x D) 2.25 x 4.5 x 5 in with perf., 600/LPR	\$14.60/roll
126092	Thermal paper, (W x D) 2 x 5 in, 6 rolls/case	\$72.50/case
Cables		
41276	Serial cable, 6 ft (DB9 male to blunt end) (Rice Lake indicators)	\$65.00
79074	USB-A (male) to USB-B (male) cable, 6 ft	\$30.00
64794	DB9 RS-232 cable DB9F to DB9M	\$65.00

Zebra ZD Series

Label Printer



Standard Features

- Print width 4.09 in
- Print speeds of 6 in per second
- 203 dpi
- USB 2.0 host
- Auto sense EPLZ or ZPL
- Tear bar

Options

- RS-232
- Peeler mechanism
- Models available with Ethernet

Specifications

Paper Width:

0.75 - 4.25 in

Paper Thickness:

0.003 - 0.0075 in

Paper Diameter (OD):

5 in

Paper Roll Shaft:

0.5 and 1.0 in standard

Resolution:

203 dpi/8 dots per mm

Memory:

512 MB flash, 128 MB SDRAM

Print Width:

4.09 in

Bar Code Symbologies:

Barcode ratios: 2:1 (non-rotated) and 3:1

Linear bar codes: Codabar, Code 11 (ZPL),

Code 128, Code 39, Code 93, EAN-13, EAN-8, EAN-14 (ZPL), German Post Code (EPL), Industrial 2-of-5 (ZPL), Interleaved 2-of-5, Japanese Postnet (EPL), ISBT-128 (ZPL), Logmars (ZPL), MSI, Plessey, Postnet, GS1 DataBar (RSS-14), Standard 2-of-5 (ZPL), UCC/EAN-128 (EPL), UPC and EAN 2 or 5 digit extensions (ZPL), UPC-A, UPC-A and UPC-E with EAN 2 or 5 digit extensions, UPC-E and GS1 DataBar (formerly RSS)

Two-dimensional: Codablock (ZPL), Code 49 (ZPL), Data Matrix, MaxiCode, QR Code, MicroPDF417, Aztec
For EPL and ZPL except where noted

Maximum Print Length:

3.90 in

Maximum Print Speed:

6.0 in per second

Media Sensors:

Full width, movable reflective, multi-position transmissive/gap sensor

Ribbon Outside Diameter:

2.6 in

Ribbon Standard Length:

984 ft (300 m)

Ribbon Ratio:

1:4 media to ribbon

Ribbon Width:

0.585 - 4.65 in

Ribbon Core Inner Diameter:

1 in

Interface:

USB 2.0 host
Ethernet 10/100 LAN

Operating Characteristics:

Operating temperature: 40° F to 105° F
(41° C to 4.4° C)

Storage temperature: -40° F to 140° F
(-40° C to 60° C)

Operating humidity: 5% to 95% non-condensing

Storage humidity: 5% to 95% non-condensing

Electrical:

Auto-detectable (PFC compliant)

Physical Characteristics:

ZD420d: (L x W x H) 8.69 x 6.98 x 5.93 in

ZD420t: (L x W x H) 10.5 x 8.0 x 7.5 in

Warranty:

One-year limited

Part Number/Price

Part #	Description	Est. Weight	Price
Direct Thermal			
192720	ZD420d direct thermal printer, USB host	10 lb	\$595.00
192721	ZD420d direct thermal printer, USB host, Ethernet LAN	10 lb	\$745.00
Thermal Transfer			
192722	ZD420t thermal transfer printer, USB host	10 lb	\$695.00
192723	ZD420t thermal transfer printer, USB host, Ethernet LAN	10 lb	\$845.00

Options/Accessories

Part #	Description	Price
192735	Peeler option, ZD420t, front mount, field installable	\$40.00
192737	Peeler option, ZD420d, front mount, field installable	\$40.00
192738	RS-232 option, ZD420t	\$25.00
192739	RS-232 option, ZD420d	\$25.00
Label Stock/Ribbon		
192736	Ribbon core option, ZD420t, to accept 1 in ribbon cores (set of 2)	\$25.00
192724	2000 wax ribbon (ZD420t) 2.52 in x 984 ft, 1 in core	\$4.50
192725	2000 wax ribbon (ZD420t) 3.31 in x 984 ft, 1 in core	\$6.00
192726	2000 wax ribbon (ZD420t) 4.23 in x 984 ft, 1 in core	\$7.60
192727	5555 wax ribbon (ZD420t) 2.52 in x 984 ft, 1 in core	\$12.00
192728	5555 wax ribbon (ZD420t) 3.31 in x 984 ft, 1 in core	\$15.60
192729	5555 wax ribbon (ZD420t) 4.33 in x 984 ft, 1 in core	\$20.50
192730	5095 resin ribbon (ZD420t) 2.52 in x 984 ft, 1 in core	\$25.00
192731	5095 resin ribbon (ZD420t) 3.31 in x 984 ft, 1 in core	\$32.50
192732	5095 resin ribbon (ZD420t) 4.33 in x 984 ft, 1 in core	\$42.50

Zebra® QLn420

Mobile Printer



Standard Features

- Apple iOS, Android, Windows Mobile and BlackBerry connectivity
- Direct thermal printing of barcodes, text and graphics
- CPCL, EPL™ and ZPL® programming languages
- 256 MB Flash memory supports downloadable programs, receipt formats, fonts and graphics (64 MB available for user storage)
- PowerPrecision+ 4900 mAh Li-Ion rechargeable battery
- Built-in battery charger
- Serial and USB ports (both support strain relief)
- Belt clip for unobtrusive and convenient printing
- Black mark and gap media sensing using fixed center-position sensors
- Easy-to-use peel and present mode
- Label present sensor for issuing labels one at a time
- Tear bar for easy dispensing
- Center-loading media locking for variable roll widths
- “Clamshell” design for easy media loading
- Management: Mirror, SNMP, Web server, Profile Manager, AirWatch and Wavelink Avalanche®
- Large, easy-to-read LCD control panel (240 x 128 pixels)
- LCD can be customized using WML (text and icons)
- Printer alerts on the display, help menus
- Tolerance of multiple drops from 6' / 1.8 m to concrete
- IP43 dust- and water-resistance rating (IP54 with soft case)
- 400 MHz 32-bit ARM processor
- XML support
- Supports vertical and horizontal printing
- Printers can be used in any orientation
- QR barcode links to web-based help pages
- Zebra Print Touch simplifies Bluetooth pairing and launches web-based help pages with NFC-enabled devices
- Label odometer
- NTP (Network Time Protocol) support via WiFi or Ethernet

Specifications

- Paper Width:**
4.40 in
- Paper Thickness:**
3.2 mil to 7.5 mil
- Paper Diameter (OD):**
2.6 in
- Paper Roll Shaft:**
0.75 in
- Resolution:**
203 dpi
- Memory:**
128 MB RAM / 256 MB Flash
- Print Width:**
4.10 in
- Bar Code Symbologies:**
Codabar (NW-7), Code 39, Code 93, Code 128, EAN-8, EAN-13, UCC/EAN 128, UPC-A, UPC-E, PDF417, Micro PDF417, QR Code, TLC39
- Maximum Print Length:**
32 in
- Maximum Print Speed:**
4 ips
- Media Sensors:**
Black mark, Gap
- Interface:**
RS-232, USB, WiFi, Bluetooth®
- Operating Characteristics:**
Operating temperature: -4° F to 122° F (-20° C to 50° C)
- Approvals:**
CE, UL, TUV, CSA
- Physical Characteristics:**
Width: 6.5 in
Height: 7.35 in
Depth: 3.25 in
Weight: 2.45 lb
- Warranty:**
One-year warranty

APPROVALS



Part Number/Price

Part #	Description	Est. Weight	Price
181232	QLn420, 4 in direct thermal printer, 203 dpi, RS-232/USB/WiFi/Bluetooth®	3 lb	\$1,285.00

Options/Accessories

Part #	Description	Price
181233	Power supply, 12-24VDC	\$44.00
181236	Power supply, 15-60VDC	\$85.00
181234	RAM Handi-Mount kit	\$263.00
188144	AC Adapter	\$95.00
188145	Receipt paper	\$12.00
Label Stock/Ribbon		
181238	4 in x 4 in direct thermal labels, with Gap. 36 rolls per case	\$285.00
181239	4 in x 2 in direct thermal labels, with Gap. 36 rolls per case	\$268.00
Cables		
181235	RS-232C, 6 ft	\$36.00

DTL

Direct Thermal Label



Not recommended for applications with exposure to sunlight, fluorescent lamps or heat.

Standard Features

- Requires a 633 nm visible light diode (VLD) scanning device for barcodes
- All-temperature permanent acrylic adhesive with short repositioning time, withstands some contact with alcohol, blood, grease and water

Applications

- Recommended for paper, corrugated containers, folding cartons with exterior varnish, glass, metal, PVC, polyesters, acetate, cellophane XT polymer, polystyrene, and some treated polypropylenes and polyethylenes

Part Number/Price

Part #	Width x Length	Roll Dia.	Case Qty	Labels Per Roll	Perf.	Price
0.75 in Core Size						
110463	2.00 x 3.00 in	2 in	36	125	Yes	\$97.00/case
1 in Core Size						
110346	1.20 x 0.85 in	5 in	6	2,710	Yes	\$8.25/roll
35342	2.0 x 1.0 in	4 in	12	1,375	Yes	\$8.50/roll
110350	2.00 x 1.00 in	5 in	16	2,600	Yes	\$15.05/roll
37354	2.25 x 1.25 in	2 in	12	260	Yes	\$5.15/roll
40332	2.25 x 2.00 in	5 in	12	1,445	Yes	\$14.25/roll
110348	2.25 x 3.00 in	5 in	16	950	Yes	\$13.50/roll
37352	2.25 x 4.00 in	4 in	12	380	Yes	\$8.50/roll
110349	2.25 x 4.00 in	5 in	12	700	Yes	\$10.80/roll
65617	2.25 x 4.50 in	5 in	16	600	Yes	\$14.60/roll
110347	2.25 x 1.25 in	5 in	16	2,100	Yes	\$12.80/roll
156746	3.00 x 2.00 in	4 in	8	800	Yes	\$9.95/roll
110352	3.00 x 3.00 in	5 in	8	950	Yes	\$18.75/roll
110351	3.50 x 1.00 in	5 in	8	2,600	Yes	\$22.00/roll
110353	4.00 x 1.00 in	5 in	8	2,500	Yes	\$21.60/roll
37350	4.00 x 1.50 in	4 in	12	960	Yes	\$27.45/roll
110354	4.00 x 1.50 in	5 in	8	1,800	Yes	\$21.00/roll
110345	4.00 x 2.00 in	5 in	8	1,400	Yes	\$19.20/roll
110355	4.00 x 2.50 in	5 in	8	1,100	Yes	\$20.10/roll
53251	4.00 x 3.00 in	5 in	12	930	Yes	\$23.35/roll
37348	4.00 x 3.00 in	2 in	12	110	Yes	\$5.95/roll
40331	4.00 x 4.00 in	5 in	8	745	Yes	\$23.35/roll
110356	4.00 x 5.00 in	5 in	8	500	Yes	\$19.00/roll
37345	4.00 x 6.00 in	5 in	8	450	Yes	\$20.00/roll
3 in Core Size						
21776	3.00 x 3.00 in	8 in	8	2,000	Yes	\$40.25/roll
156745	3.00 x 5.00 in	8 in	8	1,200	Yes	\$28.00/roll
91303	4.00 x 2.00 in	8 in	4	2,900	Yes	\$37.60/roll
43937	4.00 x 4.00 in	8 in	4	1,500	Yes	\$37.85/roll
25935	4.00 x 6.00 in	8 in	4	1,000	*	\$34.10/roll
150921	4.00 x 6.00 in	8 in	4	1,000	Yes	\$30.50/roll
20594	4.00 x 6.50 in	8 in	4	900	Yes	\$32.70/roll
25975	4.25 x 2.50 in	6 in	6	1,090	Yes	\$25.65/roll
20531	4.50 x 2.50 in	8 in	4	2,500	*	\$50.75/roll
20597	3.5 x 3.25 in	10 in	10	3,100	No	\$70.00/roll
Star Labels (1 in Core Size)						
70598	Black line, 3 x 1 in	4 in	10	1,600	No	\$22.00/roll
70597	Black line, 3 x 2 in	4 in	10	900	No	\$22.00/roll
Medical						
107134	1 x 11 in Datamax O-Neil SafeD-Band, wristband	5 in	4	350		\$398.00/case

* Perforated liner available upon request at no charge. Minimum order quantities may apply. NOTE: 8 and 10 in diameter rolls are not Allegro compatible

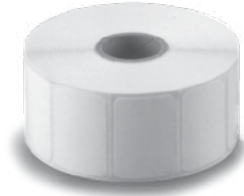
Custom label quote form online at www.ricelake.com/customlabel

Standard Features

- Top-coated white matte finish
- Requires a visible light (633 nm) scanning device for bar codes
- Withstands some contact with alcohol, blood, grease and water



DTL-Plus
High-speed Thermal Transfer Label



DTT
Direct Thermal Tag Stock

Not recommended for applications with exposure to sunlight, fluorescent lamps or heat

Part Number/Price

Part #	Description	Price
109340	3 in wide continuous tag stock, 7.2 mil, 3 in core, 8 in O.D., 480 ft wound out	\$37.50
109298	4 in wide continuous tag stock, 7.2 mil, 3 in core, 8 in O.D., 480 ft wound out	\$40.00
119829	3.5 x 5.5 in perforated, tow up fan folded stacks of 1,000, min. order of 1,000	\$0.05 each

DTL-SYN

Standard Features

- Top-coated white matte finish
- Requires a visible light (633 nm) scanning device for bar codes
- All-temperature permanent acrylic adhesive with short repositioning time
- Withstands some contact with alcohol, blood, grease and water



DTL-SYN
Direct Thermal Synthetic Label

Part Number/Price

Part #	Description	Price
109448	3.25 x 3.25, 3 in core, 8 in O.D., 1,800 LPR, wound out, 208 roll minimum order	\$90.00/roll



Standard Features

- All temperature permanent acrylic adhesive
- Withstands some contact with alcohol, oil, grease, blood and water

Part Number/Price

Part #	Width x Length	Roll Dia.	Case Qty	Labels Per Roll	Perf.	Price
1 in Core Size						
41978	4.00 x 3.00 in	4 in	8	500	Yes	\$11.50/roll
110357	1.50 x 1.00 in	5 in	8	2,260	Yes	\$8.40/roll
110362	2.00 x 1.00 in	5 in	8	2,260	Yes	\$10.45/roll
110358	2.25 x .750 in	5 in	6	3,320	Yes	\$10.35/roll
110360	2.25 x 3.00 in	5 in	6	930	Yes	\$11.05/roll
110359	2.25 x 1.25 in	5 in	12	2,100	Yes	\$10.35/roll
110365	4.00 x 2.00 in	5 in	6	1,370	Yes	\$18.00/roll
53261	4.00 x 3.00 in	5 in	12	930	Yes	\$18.05/roll
110366	4.00 x 4.00 in	5 in	12	700	Yes	\$18.00/roll
160934	4.00 x 4.00 in	5 in	12	700	No	\$18.00/roll
110367	4.00 x 6.00 in	5 in	12	475	Yes	\$16.50/roll
3 in Core Size						
21785	2.00 x 1.00 in	8 in	12	5,500	*	\$12.95/roll
25945	2.00 x 1.00 in	6 in	12	2,550	*	\$9.00/roll
66541	2.50 x 1.75 in	8 in	2	3,600		\$80.00/roll
44347	2.50 x 1.50 in	8 in	8	3,600	No	\$160.00/case
20671	3.00 x 3.00 in	8 in	8	2,000	*	\$23.00/roll
48408	3.50 x 1.00 in	8 in	4	5,500	Yes	\$86.55/case
156741	4.00 x 4.00 in	8 in	4	1,500	Yes	\$18.30/roll
21788	4.00 x 6.00 in	8 in	4	1,000	*	\$17.90/roll
20573	4.00 x 6.50 in	8 in	4	900	*	\$19.20/roll
156742	4.00 x 6.00 in	8 in	4	1,000	Yes	\$17.90/roll
20536	4.50 x 2.50 in	8 in	4	2,500	*	\$34.55/roll
Kit, 4 label rolls, 2 ribbons, 1 cleaning card						
126629	4.00 x 4.00 in	8 in	1	1,500		\$100.95/case

* Perforated liner available upon request at no charge. Minimum order quantities may apply.
 NOTE: 8 in diameter rolls are not Allegro compatible. Custom label quote form available online
 NOTE: Not recommended for long-term exposure to water or other liquids

Fantastock Thermal Transfer Label

Standard Features

- Withstands some contact with alcohol, oil, grease, blood and water
- Suited for alphanumerics, bar codes and graphics
- Top-coated white matte finish

Part Number/Price

Part #	Width x Length	Roll Qty.	Case	Labels Per Roll	Price
1 in Core Size					
35417	Fantastock 4 x 2.88 in	4	8	500	\$37.50/roll
126114	3 x 1 in TTL Fantastock	4	8	500	\$40.00/roll
129377	4 x 2.5 in	5	8	1,650	\$128.00/roll
21794	4 x 2.875 in , 3 in core, 8 in O.D. minimum four rolls	4	4		\$155.00/roll

NOTE: 8 in diameter rolls are not Allegro compatible

TTT Standard Tag



Part Number/Price

Part #	Width x Length	Roll Qty.	Case	Labels Per Roll/ft.	Perf.	Price
3 in Core Size						
89190	4 in wide continuous 7.5 pt	8 in	4	4,000 ft	No	\$38.50/roll
107621	3.25 wide x continuous 7.5 pt, 11 in O.D., 50 roll minimum order	—	—	1,010 ft	No	\$28.40/roll
124757	4.5 x 2.5 in, with sensing notch 20 roll minimum order	—	4	2,300	Yes	\$51.50/roll
164870	4 x 6 in, stack of 1,000	—		1,000		\$28.50/stack

NOTE: Not recommended for long-term exposure to water or other liquids

Standard Features

- Withstands some contact with alcohol, oil, grease, blood and water
- Suited for alphanumerics, bar codes and graphics
- Top-coated white matte finish

SDR Super Durable Ribbon



Part Number/Price

Part #	Width x Length	Color	Case Qty	Datamax Comp	Zebra/ Elton Desktop Comp	Zebra Ind. Comp.	Price
1/2 in Core Size Not for all 2" wide printers							
37366	2.50 in x 242 ft	No	12	No	800009-002	No	\$5.70/roll
126115	3.27 in x 243 ft	No	36	221967	No	No	\$7.95/roll
37368	4.30 in x 242 ft	No	12	No	800009-004	No	\$9.35/roll
92633	4.33 in x 360 ft	No	24	226757	No	No	\$15.00/roll
1 in Core Size							
21772	4.00 in x 1182 ft	Yes	24	221716	No	No	\$1,015.00/case
52343	4.30 in x 1476 ft	No	6	No	5095BK11045	Yes	\$84.00/roll
129378	4.30 in x 984 ft	—	24	296639	—	—	\$35.15/roll

Scannable colors include: Blue, Red, White, Gold

Standard Features

- 4.6 micron thermal transfer resin-based ribbon
- Smudge and smear proof
- 1,182 ft (360.3 m) long (one ribbon prints two rolls of 8 in [203.2 mm] O.D. label or tag stock)
- Avoid exposure to heat, humidity and sunlight during storage

MaxWax™ GPR

General-Purpose Ribbon



Standard Features

- 4.6 micron thermal transfer wax/resin ribbon
- Smudge and scratch resistant
- 1,182 ft (360.3 m) long (one ribbon prints two rolls of 8 in [203.2 mm] O.D. label or tag stock)
- Avoid exposure to heat, humidity and sunlight during storage

Part Number/Price

Part #	Width x Length	Color	GoDex Comp.	Datamax Comp.	Zebra/Eitron Comp.	Zebra Industrial Comp.	Case Qty	Price
1/2 in Core Size Not for all 2 inch wide printers								
81212*	2.50 in x 244 ft	No		Z28G-PRM064074	8000130-002	No	12	\$6.65/roll
37362	2.50 in x 298 ft	No		226351	800008-002	No	36	\$5.70/roll
35477	3.50 in x 360 ft	No		226455	No	Yes	12	\$8.25/roll
37364	4.30 in x 298 ft	No		226357	800008-004	No	36	\$10.40/roll
75895*	4.30 in x 244 ft	No		Z28G-PRM110074	800130-104	No	12	\$9.75/roll
35478	4.33 in x 360 ft	No		226457	No	Yes	12	\$10.65/roll
53265	1.30 in x 298 ft	No		No	800008-001	No	36	\$2.60/roll
1 in Core Size								
178965	4.30 in x 984 ft	No	GR4010				6	\$25.00/roll
110537	2.50 in x 984 ft	No			ZEBGPR-M064300		24	\$4.50/roll
34054	3.00 in x 1181 ft	Yes		226102	No	No	6	\$17.25/roll
40787	4.30 in x 1189 ft	No		No	800010-004	Yes	6	\$28.00/roll
110536	4.30 in x 984 ft	No		296143	NO	No	24	\$13.50/roll
34058	4.50 in x 1182 ft	Yes		226100	No	No	6	\$27.50/roll
42474	6.00 in x 1476 ft	Yes		224108	No	No	24	\$42.90/roll
GPR Plus (for use with Kimdura Stock)								
53611**	1.57 in x 1476 ft	No		No	No	5095BK04045	6	\$28.10/roll
20538	2.0 in x 1182 ft	No		222103	No	No	36	\$8.40/roll
20539	3.00 in x 1182 ft	No		222102	No	No	6	\$105.25/case
34056	4.00 in x 1182 ft	No		222116	No	No	24	\$25.25/roll

Prices for black ribbon only.

Color ribbon—contact RLWS sales for prices and availability.

Scannable colors include: Silver, gold, green, blue, brown, purple, maroon, midnight blue, fuchsia, kelly green, royal blue, lavender

Additional colors available: Red, orange, yellow, white, pink, pumpkin

* Ribbon for TLP2844

** Resin Performance

Tape and Ticket Printer Impact Ribbons

Standard Features

TicketPress:

- Cartridge-type
- Ribbon life approximately 3 million characters

SP2200 and SP2000:

- Cartridge-type
- Ribbon life is approximately 1 million standard characters

IDS-150A, IDS-152, and IDS-160:

- Inked spools

TM-U295, TM-U200, TM-300:

- Cassette-type
- TM-U295: Ribbon life is approx. 1.5 million standard characters
- TM-U200 and TM-300: Ribbon life is approx. 4 million characters (continuous printing)

Citizen® CBM-750 and Citizen® iDP-3111:

- Cassette-type
- CBM-750: Ribbon life is approx. 4 million lines (continuous printing) iDP-3111: Ribbon life is approx. 1 million lines (continuous printing)

Okidata 184 Turbo and 320:

- Self-inking
- Ribbon life is approximately 3 million characters

DH4000 and Toledo 8806A, SP298, SP2320 and SP2520, LC-7211, SP349 and SP300, DP8340:

- Cassette-type



Part Number/Price

Part #	Description	Price
SP2200 and SP2000 Ticket Printer		
20308	Black ink cartridge	\$24.00
TicketPress™ Ticket Printer		
128031	Black ribbon cartridge	\$21.00
132405	Purple ribbon cartridge	\$21.00
IDS-150A and IDS-152 Ticket Printer		
20440	Purple ink ribbon	\$10.00
IDS-160 Tape Printer		
20447	Purple ink ribbon	\$10.00
Epson® TM-U295 Ticket Printer		
29584	Purple ink cartridge (ERC 27)	\$12.00
29583	Black ink cartridge	\$12.00
Epson TM-U200/TM-U220 and TM-300 Tape Printer		
31296	Purple ink cartridge (ERC 30, 34)	\$12.00
66499	Red/black ink cartridge	\$12.00
Epson TM-U590 Ticket Printer		
68525	Purple ink cartridge (ERC-31)	\$12.00
Citizen CBM-750 Tape Printer		
41902	Red/black ribbon cartridge	\$10.00
Okidata 184 Turbo and 320 Line Printer		
20664	Ribbon cartridge	\$8.00
DH4000 and Toledo 8806A and Fairbanks 50-3925 Tape Printer		
20428	Purple ribbon cartridge (no blue guide)	\$20.00
Star® SP298, SP2320 and SP2520 Ticket Printer		
69921	Purple ribbon cartridge	\$12.00
Star SP349 and SP312 Tape Kiosk Printer		
69920	Purple ribbon cartridge	\$13.00
Star DP8340 Tape Printer		
20447	Purple ribbon cartridge	\$10.00
Star SP700 Tape Printer		
103728	Black ribbon cartridge	\$12.00

Don't see a ribbon or paper roll you need? Send us the manufacturer name and model of the printer and we will provide you a quotation.

Tape Printer Paper Supplies



Standard Features

IDS-150A, IDS-152, IDS-160, TM-U200, TM-300, and Citizen® CBM-750:

- One-ply paper roll (W x L): 3 in x 150 ft (76.2 mm x 45.7 m)
- Two-ply paper roll (W x L): 3 in x 90 ft (76.2 mm x 27.4 m)

Citizen® iDP-3111:

- One-ply paper roll (W): 2.25 in (57.1 mm)

Star®:

- One- and two-ply paper roll (W x L): 3 in x 3 ft (76.2 mm x 0.9 m)
- One-ply thermal paper roll (W x L): 3.125 in x 3.25 ft (76.2 mm x 0.99 m), 8 in roll dia.

Part Number/Price

Part #	Description	Price
IDS-150A, IDS-152, IDS-160, TM-U220, TM-300, and Citizen CBM-750:		
69916	One-ply Bond, (W x L) 3 in x 150 ft (76.2 mm x 45.7 m), 3 in dia., 1/2 in core	\$5.00/roll
69915	Two-ply Bond, (W x L) 3 in x 90 ft (76.2 mm x 27.4 m), 3 in dia, 1/2 in core white/canary yellow	\$7.00/roll
Citizen iDP-3111:		
42870	One-ply Bond, (W x L) 2.25 in x 150 ft (57.1 mm), 7/16 in core 2 7/8 in outer diameter	\$5.00/roll
Star:		
69916	One-ply Bond, (W x L) 3 in x 150 ft (76.2 mm x 45.7 m), 3 in dia., 1/2 in core	\$5.00/roll
69915	Two-ply Bond, (W x L) 3 in x 90 ft (76.2 mm x 27.4 m), 3 in dia, 1/2 in core white/canary yellow	\$7.00/roll
69917	One-ply thermal, (W) 3.125 in (75.44 mm, 2.97 in dia.) 7/16 core 230 ft	\$5.00/roll
70083	One-ply thermal, (W) 3.23 in (82 mm, 3 in dia.), 8 in roll dia. (2,020 ft long) 1 1/2 core	\$35.00/roll
71214	One-ply plain paper, (W) 3.25 in (82.5 mm, 3 in dia.), 50 rolls/case, 3/8 core	\$95.00/case
105711	Two-ply plain paper, (W) 3.25 in, 50/case, 3/8 core 3 in outer diameter	\$150.00/case
105712	Three-ply plain paper, (W) 3 in, 50 per case, 3/8 core, 3 in outer diameter (white, canary, pink)	\$160.00/case
102950	One-ply thermal, (W) 4.4 in, 6 in outer diameter, 1 in core, 930 ft roll	\$42.50/roll
20448	One-ply Bond, (W x L) 4.5 in x 165 ft, 7/16 core, 3 in outer diameter	\$8.00/roll
42672	Two-ply, (W x L) 4.5 in x 95 ft, 3 in outer diameter	\$7.00/roll
70683	One-ply Bond, (W x D) 4.5 x 3 in, sprocket feed, 140 ft	\$13.00/roll
107618	One-ply thermal, (W) 10 mm (4.4 in, 4 in) outer diameter, 500 ft	\$10.50/roll
102957	One-ply thermal, (W) 58 mm (2.28 in, 2 3/4 in) outer diameter, 1/2 in core	\$3.50/roll
Epson:		
105445	One-ply thermal, (W) 80 mm (3.1 in, 6 in) outer diameter, 710 ft/roll	\$25.00/roll
105446	One-ply thermal, (W) 80 mm (3.1 in, 8 in) outer diameter, 1,268 ft/roll	\$27.00/roll
75947	One-ply thermal, (W x L) 2.25 in x 85 ft, 1 7/8 outer diameter, Mobilink, 1/2 in core	\$6.00/roll
126092	One-ply receipt (W x L) 2 in x 574 ft, 1 in core , 5 in O.D., 6 rolls/case	\$72.50/case
Kiosk Printers:		
50426	One-ply, (W x D) 3.25 in x 6 in, 7/16 core 950 ft	\$24.00/roll
104940	One-ply thermal, (W x D) 112 mm x 5 in, 1 in core, 625 ft	\$24.00/roll
Zebra Mobile:		
105566	One-ply thermal, 2 in continuous 79 ft rolls, 2.5 in OD (36 per case)	\$66.25/case
105565	One-ply thermal, 4 in continuous 79 ft rolls, 2.5 in OD (36 per case)	\$121.00/case
Misc:		
66653	One-ply thermal, (W x L) 80 mm (3.1 in x 455 ft, 5 in diameter for Swecoin, Star TUP 900)	\$18.00/roll
76076	One-ply thermal, (W) 60 mm (2 3/8 in), 100 mm) outer diameter 40 mm core, wound out	\$13.00/roll
73134	One-ply Bond, (W) 1 3/4 in x 1-7/8 outer diameter, 7/16 core	\$3.50/roll
47341	One-ply thermal, (W x L) 64 mm x 50 m, 1 9/16 in core	\$5.00/roll
110463	(W x L) 2 x 3 in label, RW 220 or RW 420, 125 labels/roll, 2 in OD, 36 per case	\$97.00/case
165865	Thermal paper, (W x D) 4 x 5 in, 6 rolls/case	\$110.00/case
166916	Thermal paper, (W x D) 8.5 in x 565 ft, continuous, 4 rolls/case	\$200.00/case

Hecon Printers, EL522 and EL516 - 20266

Standard Features

- Carbon triplicate interleaved
- Size (W x L): 7.875 x 4.25 in (200 x 127 mm)
- Order quantity: 500 per package

20266

Form 510 is a scale ticket form with fields for DATE, No., SELLER, BUYER, ADDRESS, CITY, STATE, ZIP, GROSS, TARE, NET, DRIVER ON OFF WEIGHED BY, and FORM 510.

SP2200, SP2000 - 20265

Standard Features

- Carbon triplicate interleaved, perforated and glued on one end
- Size (W x L): 9 x 5.5 in (228.6 x 139.7 mm)
- Order quantity: 500 per package

20265

Form ES-4 is an electronic scale ticket form with fields for DATE, No., SELLER, BUYER, ADDRESS, CITY, STATE, ZIP, COMMODITY, PRICE, REMARKS, DRIVER ON OFF, WEIGHER, and Form ES-4. It includes a 'Limit of Carbon Coverage' indicator.

Rice Lake Scales - 71630 or 105182

Standard Features

- Carbonless duplicate or triplicate
- Size (W x L): 4.25 x 7 in (107 x 177.8 mm) attached at 4.25 top edge
- Order quantity: 500 per package
- Custom (Duplicate): Add company name (min. order two packs)
- Custom (Triplicate): Add company name (min. order two packs)

Rice Lake Scale Ticket Form includes fields for Customer Name, Driver On p, Driver Off p, Customer Signature, and the RICE LAKE logo.

Blank Scale Ticket - 22263

Standard Features

- Three-part carbonless
- White, canary yellow, and pink
- Size (W x L): 4.25 x 5.5 in (108 x 140 mm)
- Attached at 4.25 edge
- Custom: Add company name (min. order of 1,000)

A blank scale ticket form with a large empty area for text.

Part Number/Price

Part #	Description	Price
20266	Hecon Printers, EL522 and EL516, 500/pack	\$92.00
20265	SP2200, SP2000, 500/pack	\$95.00
71630	Rice Lake ticket, two part, 500/pack	\$50.00
105182	Rice Lake ticket, three part, 500/pack white, canary yellow, pink	\$72.00
22263	Blank scale ticket, each	\$0.22 each

Mechanical Scale Tickets

Fairbanks™ Scales - 20260

Standard Features

- Carbon triplicate with 2 in (50.8 mm) tear-off flap
- Size (W x L): 4.75 x 1.875 in (120.7 x 47.6 mm)
- Order quantity: 500 per package

WEIGHED ON A FAIRBANKS SCALE				No. _____
Load _____			Date _____	Received by _____
From _____				
Gross _____	lbs.	To _____		
Tare _____	lbs.	Address _____		
Net _____	lbs.	Price _____	Amt. _____	
On _____	Off _____	Weigher _____		
<small>Form 333A</small>				<small>Printed in U.S.A.</small>

Howe™ Scales - 20261

Standard Features

- Carbon triplicate with 2 in (50.8 mm) tear-off flap
- Size (W x L): 5.5 x 1.75 in (139.7 x 44.5 mm)
- Order quantity: 500 per package

Weight obtained by using THE HOWE PATENTED RECORDING BEAM				No. _____
From _____			To _____	Form 3A
Gross _____	Load of _____			
Tare _____	Driver { On _____			
Fees _____	Off _____	Date _____	20 _____	
Net _____			Weigher _____	
<small>Form 3A</small>				

Create Your Own Custom Ticket

Standard Features

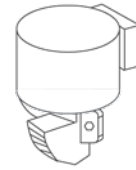
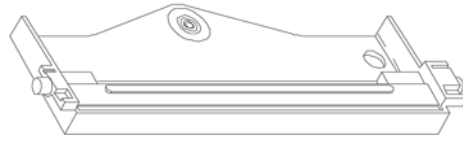
- Send us a copy of the existing custom format or drawing of a completely new one. Please specify number of carbon copies, dimensions, colors and text. Minimum order quantity may apply.
- Download form at ricelake.com/customlabel



Part Number/Price

Part #	Description	Price
20260	Fairbanks scales, 500/pack	\$65.00
20261	Howe scales, 500/pack	\$65.00

Replacement Print Heads



Part Number/Price

Part #	Description	Price
Ticket Printers		
Epson		
29535	TM-290/TM-U295	\$300.00
116659	TM-U590	\$300.00
68726	TM-U590 print mechanism	\$845.00
Rice Lake Weighing Systems		
35347	SP2200	\$300.00
20301	SP2000, serial number <6000 (has ribbon cable) (limited stock available)	\$303.00
Star		
72513	SP298	\$125.00
Tape Printers		
Epson		
118730	TM-U220	\$125.00
Label Printers		
Honeywell		
43095	Honeywell 600	\$947.00
51126	Honeywell 800, new style TDK for printers with CID # of E53-XX-XXXXXXX or greater, W-8306	\$947.00
53939	I-4208 I-4210, I-4212 (203 dpi)	\$450.00
66748	I-4308 (300 dpi)	\$550.00
67552	W-6208 (203 dpi) prior to Dec, 1999, 6 in	\$695.00
82859	W-6208 (203 dpi), DPO 20-2164-01, 1,999 to to current, 6 in	\$695.00
67551	W-6308 (300 dpi), 6 in	\$995.00
103369	M-4210, 203 dpi	\$495.00
96957	H-4212, 203 dpi	\$450.00
96958	H-4310, 308 dpi	\$695.00
72473	Ex2, E-4203 (203 dpi)	\$200.00
112517	E4205 (e) (203 dpi)	\$125.00
103368	M4206, (203 dpi)	\$495.00
118183	Print engine A-class model 4212, 203 dpi	\$450.00
Eltron/Zebra®		
53034	LP/TLP2622/2722 (2 in)	\$325.00
78998	LP/TLP-2824 (2 in)	\$165.00
78999	LP-2844 (4 in)	\$195.00
79000	TLP-2844 (4 in)	\$210.00
95375	Z4000, S4M (203 dpi)	\$695.00
111091	Zebra GK,(203 dpi)	\$200.00
GoDex		
107532	DT2X print head	\$110.00
150743	DT4X print head	\$195.00
150746	G500 print head	\$195.00

Printer Cables



Part Number/Price

Part #	Description	Price
Interface Cables for TicketPress, SP-2200, TM-U295, TM-U590 and Star® Printers		
15547	Blunt end, 25-pin D-sub male RS-232 serial interface cable	\$65.00
15548	25-pin D-sub male to 25-pin D-sub male 20 mA serial interface cable (SP2200 only)	\$65.00
15568	25-pin D-sub male to 25-pin D-sub male RS-232 serial interface cable	\$65.00
Consult	Custom 20 mA/RS-232 serial interface cable	\$95.00
Interface Cables for I-Class		
15547	Blunt end, 25-pin D-sub male RS-232 serial interface cable	\$65.00
Consult	Custom RS-232 interface cable	\$95.00
Interface Cables for Desktops, GoDEX Models, Zebra, E-4203 and M-4206		
41276	DB9 male RS-232 cable to blunt end	\$65.00
Straight Cable		
70056	DB9 male to DB9 female	\$35.00
50749	DB9 female to DB9 female	\$55.00
41279	DB25 male to DB9 male	\$65.00
72440	DB25 male to DB9 female	\$65.00
Null Modem Cable		
66535	DB9F to DB9 female, Null modem	\$45.00
64794	DB9 male to DB9 female	\$65.00
USB Cable		
79074	USB-A (male) to USB-B (male) cable, 6 ft	\$30.00
153603	USB to nine-pin Male RS-232 adapter	\$91.00
Ethernet Cable/RJ45		
72697	RJ45 to RJ45, 7 ft	\$35.00
78860	RJ45 to RJ45, cross over 7 ft	\$35.00
75594	RJ45 to nine-pin female	\$65.00
Misc. Cables and Adapters		
22436	Blunt end, nine-pin D-sub female	\$60.00
130213	Blunt end DB25 male	\$55.00
165698	Female to male gender changer	\$10.50
119064	Slimline, Null modem gender changer, DB9 female/female	\$10.50
130789	Null modem DB9 M/F	\$12.00

Blunt-end cables interface to: UMC444, UMC555, UMC600, IQ700, IQ plus® 310A, IQ plus® 355, IQ plus® 390-DC, IQ plus® 510, IQ plus® 590-DC, IQ plus® 710, IQ plus® 800, and IQ plus® 810, 520 and 920®

Custom cables are designed to interface with your specific equipment. Please specify equipment model number and connector type. Standard cable length is 5 ft (1.5 m).

Standard Features

- Tough, flexible transparent vinyl, constructed with heavy-duty stitching
- Loose fit allows for operation of switches or controls through the scale veil
- Available for most types of scale equipment



Protect your electronic scales, weight indicators and printers with a scale veil. Reduce costly repairs and down time due to moisture penetrating through instrument enclosures during cleanup or operation.

Part Number/Price

Model	Part #	Price
Epson		
TM290/295	29582	\$55.00
TM-U200 TM-U220	35666	\$60.00
TM-U590	111840	\$65.00
Okidata		
Okidata 184 Turbo Printer	21208	\$65.00
Okidata 320/390	21226	\$65.00

Custom veils and specials available; consult factory.

A large grid of empty cells, approximately 30 columns wide and 40 rows high, intended for printing data. The grid is composed of thin black lines forming a uniform pattern of squares.