



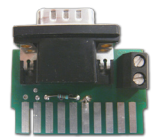
2361961 / Dimension 219 x 160 mm



2361919 / Front plate 243 x 264 mm
2363049 / Front plate 270 x 314 mm
2364091 / Front plate 290 x 196 mm



2362112 / Front plate 234 x 254 mm



Monitor adapter 10-pol.

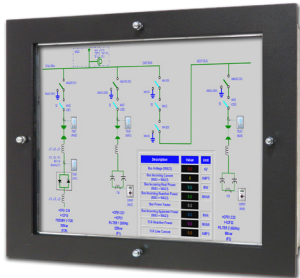
Series: Cybelec

The TFT-Industrial-Monitor is a modern concept to replace old or defective 9" CRT's mounted in control units of CYBELEC.
All units are Made in Germany, using only high quality components. A mechanic housing, similar to the original unit, makes it easy to exchange in just a few minutes.

- **For CNC 3200, DNC 70 / 74, CNC 7000 / 7300, DNC 30**
- Cybelec special timing
- mech. type: chassis (2361961)
front plate
- front plate with antireflex coated glass
- Connector: 10-pin monitor adapter
- Operating voltage: 12V DC (via monitor adapter)
- TFT-Display: 8.4" (LED)
- Resolution: 800 x 600
- Brightness: 250 cd/m²
- Contrast: 600:1
- LED-Backlight lifetime: ca. 20.000 h
- VDE 0100, 0411, 0804, 0871B and CE-Mark

Order-no.:

Cybelec CNC 3200	2361961
Cybelec DNC 70, DNC 74	2361919
Cybelec CNC 7000, CNC 7300	2363049
Cybelec DNC 30	2362112
Cybelec EUROIII	2364091



2361911 / 230V AC
- Front plate 315 x 237 mm
- Connector: 9-pin D-Sub

2364093 / 230V AC
- Front plate 315 x 237 mm
- Connector: 9-pin D-Sub, 15-pin HD D-Sub



2361912 / 12V DC (via monitor adapter)
- Front plate 315 x 344 mm
- Connector: monitor adapter 10-pin

Series: Cybelec

The TFT-Industrial-Monitor is a modern concept to replace old or defective 12" / 14" CRT's mounted in control units of CYBELEC.

All units are Made in Germany, using only high quality components. A mechanic housing, similar to the original unit, makes it easy to exchange in just a few minutes.

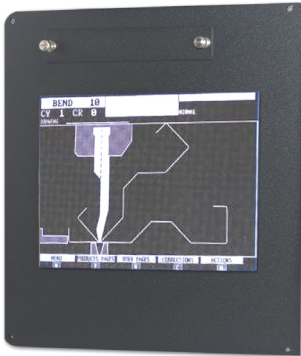
- **For DNC 90, DNC 94, DNC 900, DNC 7000, DNC 7200, DNC 7300, DNC 7400, DNC 9000**
- Cybelec special timing
- mech. type: Front plate
- Front plate with antireflex coated glass
- Connector: 9-pin D-Sub (2361911)
9-pin D-Sub, 15-pin HD D-Sub (2364093)
10-pin monitor adapter (2361912)
- Operating voltage: 85-240V AC
12V DC (2361912)
- TFT-Display: 12.1"
- Resolution: 800 x 600
- Brightness: 400 cd/m²
- Contrast: 500:1
- Backlight lifetime: ca. 50.000 h
- VDE 0100, 0411, 0804, 0871B and CE-Mark

Order-no.:

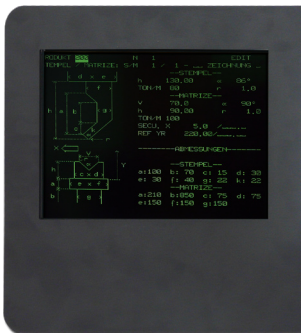
Cybelec DNC 94, DNC 94, DNC 900 (color)	2361911
Cybelec DNC 7000 / 7200 / 7300 / 7400 (mono)	2361912
Cybelec DNC 9000 (mono 12"CRT / color 14"CRT)	2364093



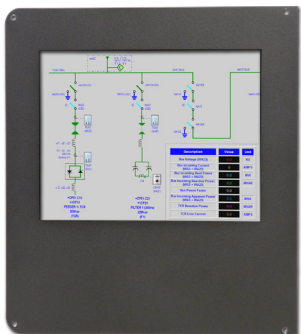
Series: Cybelec



2363919 / Front plate 280 x 308 mm



2362075 / Front plate 282 x 314 mm



2362514 / Front plate 280 x 308 mm

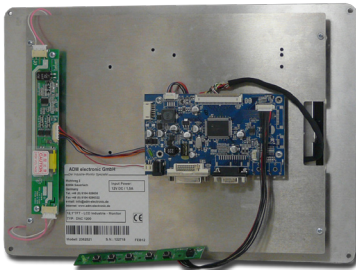
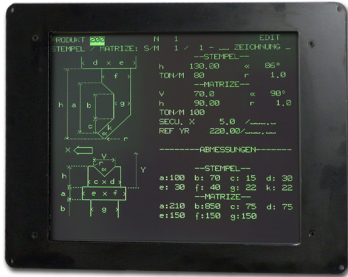
The TFT-Industrial-Monitor is a modern concept to replace old or defective 10.4" TFT monitors mounted in control units of CYBELEC.

All units are Made in Germany, using only high quality components. A mechanic housing, similar to the original unit, makes it easy to exchange in just a few minutes.

- **For DNC 80, DNC 800, DNC 806 PS**
- mech. type: Front plate
- Front plate with antireflex coated glass
- Input signal: VGA
- Connector: 15-pin HD D-Sub
- Operating voltage: 12V DC
- TFT-Display: 10.4"
- Resolution: 640 x 480
- Brightness: 400 cd/m²
- Contrast: 300:1
- Backlight lifetime: ca. 40.000 h
- VDE 0100, 0411, 0804, 0871B and CE-Mark
- Accessories kit: VGA cable

Order-no.:

Cybelec DNC 80	2363919
Cybelec DNC 800, DNC 806 PS (plug-in version)	2362075
Cybelec DNC 800 (mounting holes)	2362514



Series: Cybelec

The TTT-Industrial-Monitor is a modern concept to replace old or defective 12.1" TFT monitors mounted in control units of CYBELEC.

All units are Made in Germany, using only high quality components. A mechanic housing, similar to the original unit, makes it easy to exchange in just a few minutes.

- **For DNC 1200**
- mech. type: Front plate 337.5 x 237.5 mm
- Front plate with antireflex coated glass
- Input signal: VGA
- Connector: 15-pin HD D-Sub
- Operating voltage: 12V DC
- TFT-Display: 12.1"
- Resolution: 800 x 600
- Brightness: 400 cd/m²
- Contrast: 500:1
- Backlight lifetime: ca. 40.000 h
- VDE 0100, 0411, 0804, 0871B and CE-Mark

Order-no.:

Cybelec DNC 1200

2362521