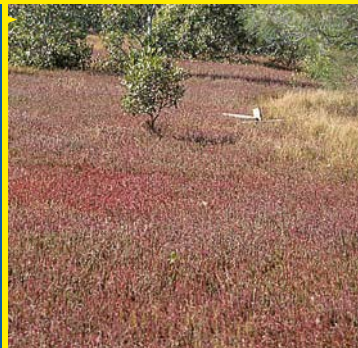


© photos G. Sainty  
SALTdeck Series

# GLASSWORT *Sarcocornia quinqueflora*

H4  
HERB



# GLASSWORT

## *Sarcocornia quinqueflora*

Sustainable  
Grazing on  
Saline Land



SALTdeck Series

© AWI & CRC Salinity 2006

H4

**Alternative name:** Beaded Glasswort. **Family:** Chenopodiaceae.

**Description:** Fleshy perennial with stems spreading horizontally then turning upwards, rooting at the nodes, to 30 cm high. Flowers inconspicuous (see photo). Seeds circular, covered with acute hairs (see photo). Flowers most of year depending on seasonal conditions and latitude.

**Key features:** Fleshy stems that vary in colour from green to purple.

**Value:** May form large patches but usually part of the salt tolerant mix of plants in estuarine saltmarsh. Inland it has limited value for grazing as it does not readily recover from defoliation, trampling or fire. Dense cover reduces the potential for erosion. Grows poorly in southern winters. Forage energy and crude protein levels are moderate.

**Salinity and waterlogging tolerance:** High tolerance to saline soils and waterlogged conditions and has value in providing groundcover to prevent erosion in salt-scalded areas.

**Notes:** Native to all States of Australia. Two subspecies in Victoria, the most common is *Sarcocornia quinqueflora* ssp. *quinqueflora*. Useful indicator of salinity. Thrives in coastal saltmarsh and common in the low marsh inundated zone. Easy to propagate from seed or pieces. Another species, known as Thick-Headed Glasswort, *Sarcocornia blackiana*, is widespread in South and Western Australia and has a thicker fruiting spike.

**References:** *Flora of South Australia*, Jessop and Toelken (eds), Part 1, 4<sup>th</sup> edition. 1986. *Flora of Victoria*, Walsh and Entwisle (eds), Vol. 3, 1996. *Flora of NSW*, Harden (ed), Vol. 1, 1990.

