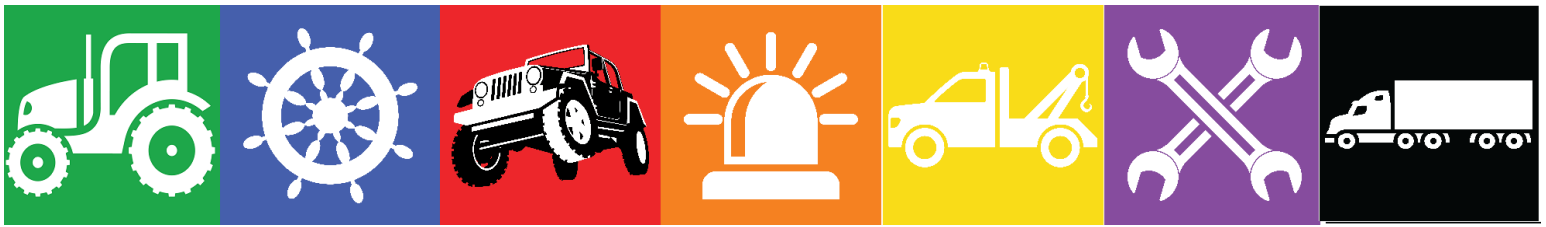


# Full Line Catalog

# LITE-IT

**CUSTER**  
*PRODUCTS*  
L I M I T E D





**Agricultural  
Lights**

**Marine  
Lights**

**Off-Road  
Lights**

**Safety  
Lights**

**Towing  
Lights**

**Work  
Lights**

**Trailer  
Lights**



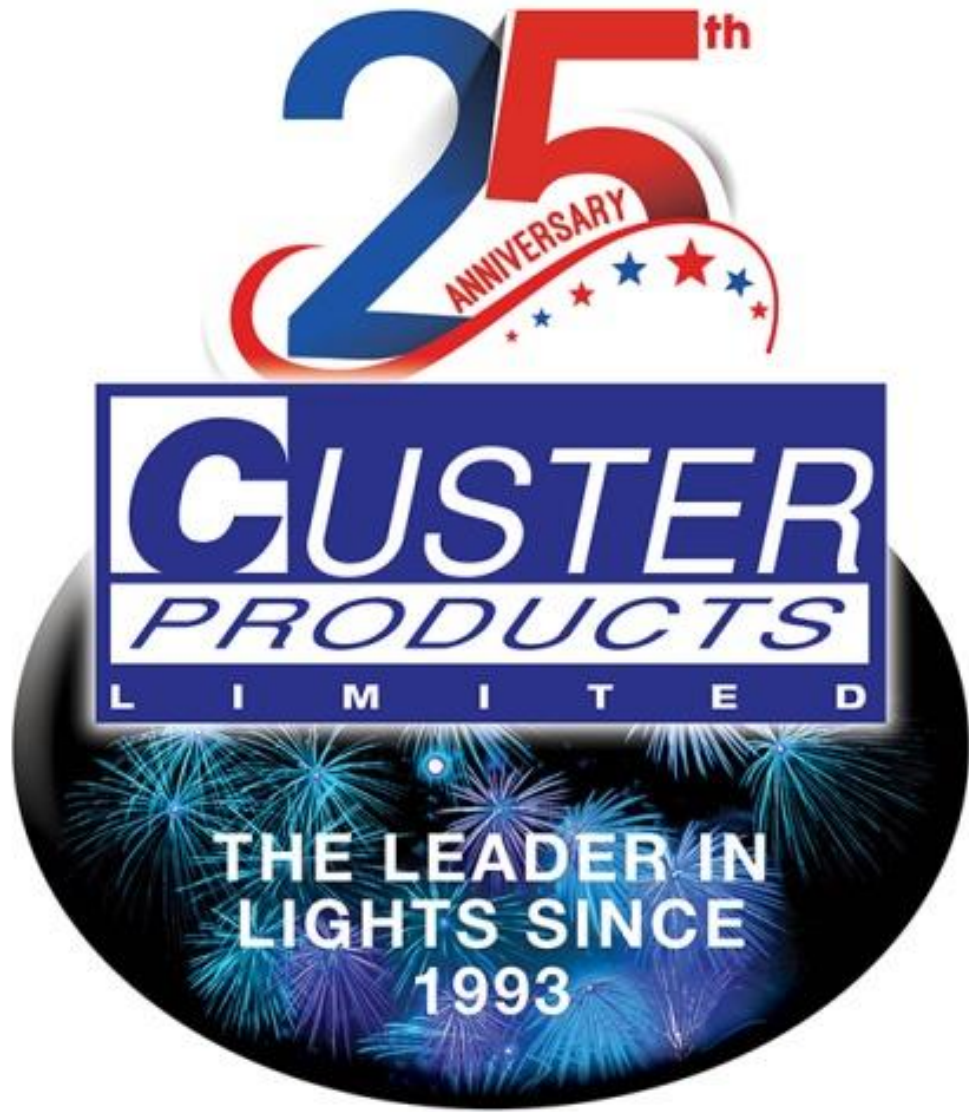
**Custer Products believes in the relentless pursuit of excellence in everything we do. We take pride in our commitment to quality products and service. We are the Leader in Lights™ for a reason.**

**Custer Products manufactures and distributes LED lights, towing lights and related lighting products to the trucking, towing, agricultural, off-road and safety industries through a network of distributors in the United States, Canada, Central and South America and Europe. We sell under the Custer, Lite-It and Lite-It Wireless brand names. Founded in 1993, we operate out of an 80,000 square foot facility in North Canton, Ohio.**

## **Contents**

LED Marker & Auxiliary Lights.....	4-7
Mounting Boxes.....	8
Color Safety Flashers.....	9
Rooftop Strobe Light Bars.....	10-11
Trailer Lights and Kits.....	12
Agricultural Lights.....	13
Commercial Tow Lights.....	14-15
LED Work Light Bars.....	16
LED Work Lights.....	17-18
Halogen Lamps & Spot Lights.....	19
Strobe Beacons.....	20-21
LED Strobes.....	22-23
Cabled LED Tow Lights.....	24
Cabled Incandescent Tow Lights.....	25
Wireless LED Tow Lights.....	26-27
Accessories.....	28
Sockets, Plugs and Adapters.....	29
Specialty Products.....	30
SMV, Conspicuity and Reflective Tape.....	31
Incandescent Lights.....	32
Product Warranty.....	33
Glossary.....	34





# LED MARKER & AUXILIARY LIGHTS



## 4" x 7.5" LED Narrow Marker Lamp

- CPL95A Amber Light, 7 LED  
 CPL95R Red Light, 7 LED
- Built in 2-wire pigtail
  - 3" hole mount centers



## 4" x 1.5" LED Marker Lights

- CPL126A Amber Light, 3 LED  
 CPL127R Red Light, 3 LED
- Built in 2 wire pigtail
  - Reflex lens



## 4" x 2" Sealed LED Marker Lights

- CPL120A Amber Light, 16 LED  
 CPL120R Red Light, 16 LED
- Built in 2 wire pigtail
  - 3" hole mount centers



## 2" Sealed LED Marker Lights

- CPL2A Amber light, 10 LED  
 CPL2R Red light, 10 LED
- Uses G2G rubber grommet
  - Standard GP1 2-wire plug



## 2.5" Round Sealed LED Marker Lights

- CPL25A Amber Light, 13 LED  
 CPL25R Red Light, 13 LED  
 CPL25AR Amber Light, 8 LED with reflex  
 CPL25RR Red Light, 8 LED with reflex  
 GP1 2-wire plug  
 G25G 2.5" rubber grommet  
 G25G-O Open-back grommet  
 G25G-CB Closed-back grommet



## 2.5" x 1.25" Sealed LED Marker Lights

- CPL26A Amber, 3 LED  
 CPL26R Red, 2 LED  
 G26G Rubber grommet  
 G26B-C Chrome (wired) mounting bracket



## 3.75" x 1.25" Sealed LED Lights

- CPL375A Amber light, 4 LED  
 CPL375R Red light, 4 LED  
 CPL375RA Red/Amber, 6 LED  
 G3B-C Wired chrome mount  
 G3B-B Wired black mount



## LED 4" x 2" Oblong Clearance/Side Marker Lights with Reflex

- CPL42A Amber light, 4 LED  
 CPL42R Red light, 4 LED
- Built in 2 wire pigtail



## LED 2-7/8" x 2-1/8" Stud Mount Side Marker Light with Reflex

- CPL275A Amber light, 6 LED, 2 wire  
 CPL275R Red light, 6 LED, 2 wire





### 3/4" LED Lights

- CPL1A** Amber light
- CPL1R** Red light
- CPL1W** White light
- CPL1A-CL** Amber light with clear lens
- CPL1R-CL** Red light with clear lens
- CPL1-BEZEL** Chrome bezel
- 3/4" Diameter



### 3/4" LED Lights with Bullet Ends

- CPL1AH** Amber Light with bullet ends
- CPL1RH** Red Light with bullet ends
- CPL1WH** White light with bullet ends
- 3/4" Diameter



### 5.5" Sealed Rectangular LED Lights

- CPL55A** Amber turn signal light, 15 LED
- CPL55R** Red stop/tail/turn light, 15 LED
- GP2** 3-wire plug
- G55G** 5.5" rubber grommet



### 4" Sealed Round LED Lights

- CPL4A10** Amber light, 10 LED
- CPL4R10** Red light, 10 LED, Stop/Tail/Turn
- CPL4CL10** Clear light, 10 LED
- GP2** 3-wire plug
- G4G** 4" rubber grommet



### 4" Sealed Round LED Lights

- CPL4A** Amber light, 18 LED
- CPL4R** Red stop/tail/turn light, 18 LED
- GP2** 3-wire plug
- G4G** 4" rubber grommet



### 4" Sealed LED Lights with Mirror Finish

- CPL4AM** Amber turn signal light, 24 LED
- CPL4RM** Red stop/tail/turn light, 24 LED
- GP2** 3-wire plug
- G4G** 4" rubber grommet



### 6.5" Sealed Oval LED Lights

- CPL65A10** Amber light, 10 LED
- CPL65R10** Red light, 10 LED, Stop/Tail/Turn
- CPL65CL10** Clear light, 10 LED
- GP2** 3-wire plug
- G65G** 6.5" rubber grommet



### 6.5" Sealed Oval LED Lights

- CPL65A** Amber turn signal light, 20 LED
- CPL65R** Red stop/tail/turn light, 20 LED
- GP2** 3-wire plug
- G65G** 6.5" rubber grommet



### 6.5" Sealed Oval LED Lights with Mirror Finish

- CPL65AM** Amber turn signal light, 24 LED
- CPL65RM** Red stop/tail/turn light, 24 LED
- GP2** 3-wire plug
- G65G** 6.5" rubber grommet

# LED MARKER & AUXILIARY LIGHTS



## 6.5" Sealed Oval LED Amber Sequencing Turn Signal Lights

- CPL65A-SEQ** 6.5" Amber oval light
- Dual function, either trailing arrow or sequencing single arrow
  - Uses G65G rubber grommet & GP3 plug



## Clearance LED Marker/Utility Lights

- CPL27A** Amber Light, 3 LED  
**CPL27R** Red Light, 3 LED
- High impact acrylic lens & ABS chrome plated bracket
  - 2-3/4" center to center holes for mounting
  - No plug needed – includes 2-wire pigtail



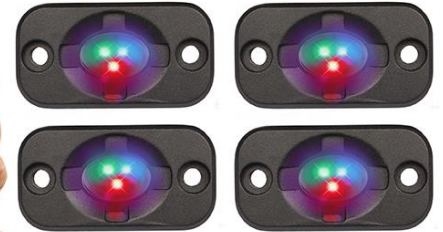
## 6.5" Sealed Oval White LED Back-Up Lights

- CPL65CL** 6.5" oval white, 28 LED
- GP2 3-wire plug
  - G65G 6.5" rubber grommet



## 4" LED Pedestal Lights

- CPL4RA-DC** 4" Red/Amber LED  
**CPL4AA-DC** 4" Amber/Amber LED  
**CPL4RCL** 4" Red/Clear LED  
**CPL4RCL-4W** Red/Clear LED with 4 wires for separate functions
- LED lights with 42 diodes, (21 per side) and chrome die cast housings



## LED RGB Rock Lights

**RGB4K** Multicolored Lights

- Comes with Four 9-Watt Lights, Controller, 10ft. wire from lights, 6.5 ft. from controller
- Lights change to any color – all controlled from free smartphone app
- 10-30V operation, polycarbonate lens
- Each light-head is 1-3/4" high x 3" wide x 1/2" deep



## 6.5" LED Side Turn Light

- CPL65A-SMA** LED Amber
- Side marker & turn signal light with 18 LEDs
  - Uses GP2 3-wire plug & G65G 6.5" rubber grommet



## Clearance LED Marker Light with Chrome Bezel

- CPL50A** Amber  
**CPL50R** Red
- 4 LED, Built-in 2-wire pigtail



## 4-5/8" Square LED Red/Amber Light

- CPL68R** Right Side  
**CPL68L** Left Side
- 25 Red LEDs & 25 Amber LEDs
  - Double stud pedestal light





### 4" Round Quad Flash LED Strobe Kit

**CPL4R-STR** Red Strobe Kit

- Self-contained flash unit
- Includes 2 lights, grommets and plugs



### 6.5" Amber Quad Flash LED Strobe Kits

**CPL65A-STR** Amber

- Self-contained flash unit
- Strobe kit (includes 2 lights, grommets & plugs)



### 17" Identification Light Bars

**CPL26R-3BAR** LED

**G26R-3BAR** Incandescent

- Mounts on 16" centers
- 2.5" lights



### LED 2" Round Sealed Flange Mount Clearance Side Marker Lights

**CPL2RF** Red light, 2 wire

**CPL2AF** Amber light, 2 wire

- Polycarbonate lens and housing
- 10 LEDs per light
- Pigtail wires (no plugs needed)



### 6.5" Clear Oval Utility Light

**CPL65CL10FB** Clear light with bezel

**CPL65CL10F** Clear light without bezel

- Surface mount design
- 10 LED clear light
- Built-in pigtail



### 4" Sealed LED Round Light with Flange Mount & Bezel

**CPL4A10FB** Amber light with bezel

**CPL4R10FB** Red light with bezel

**CPL4A10F** Amber light without bezel

**CPL4R10F** Red light without bezel

- Flush mount design
- 10 square LEDs
- Acrylic Lens
- ABS Housing
- Built-in pigtail
- Hardware



### LED Tail, License, Backup Lights

**CPL62** Without license light

**CPL62L** With license light



### 6.5" Sealed LED Oval Light with Flange Mount and Bezel

**CPL65A10FB** Amber light with bezel

**CPL65R10FB** Red light with bezel

**CPL65A10F** Amber light without bezel

**CPL65R10F** Red light without bezel

- Flush mount design
- 10 square LEDs
- Acrylic Lens
- ABS Housing
- Built-in pigtail
- Hardware

# MOUNTING BOXES



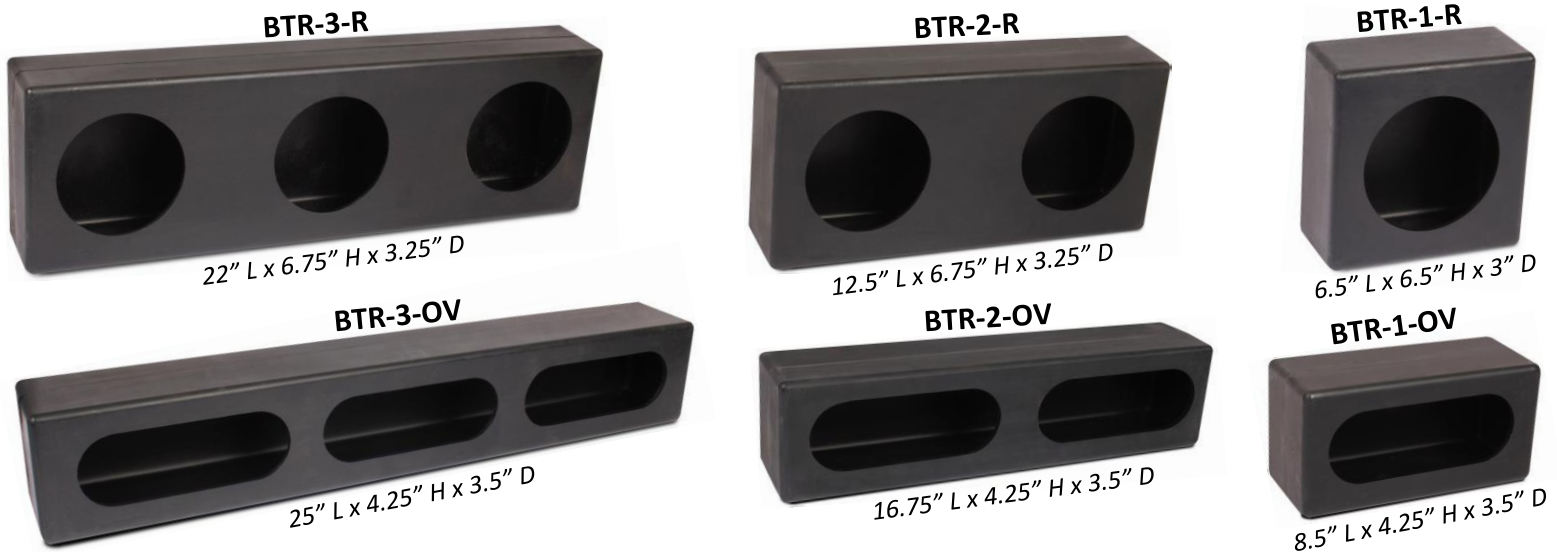
## Steel Mounting Boxes

- MT-BOX4** Steel box for ONE 4" round light (6.5" L x 6.5" H x 3" D)
- MT-BOX4-2** Steel box for TWO 4" round lights (12.5" L x 6" H x 3.5" D)
- MT-BOX4-3** Steel box for THREE 4" round lights (18.25" L x 6" H x 3.5" D)
- MT-BOX65** Steel box for ONE 6.5" oval light (8.5" L x 4" H x 3.5" D)
- MT-BOX65-2** Steel box for TWO 6.5" oval lights (16.75" L x 4.25" H x 3.5" D)
- MT-BOX65-3** Steel box for THREE 6.5" oval lights (25" L x 4.25" H x 3.5" D)



## Aluminum Mounting Boxes

- AL4R** Aluminum Box for ONE 4" round light (6.5" L x 6.5" H x 3" D)
- AL4R2** Aluminum Box for TWO 4" round lights (12.5" L x 6" H x 3.5" D)
- AL4R3** Aluminum Box for THREE 4" round lights (18.5" L x 6" H x 3.5" D)
- AL650** Aluminum Box for ONE 6.5" oval light (8.5" L x 3.75" H x 3.5" D)
- AL6502** Aluminum Box for TWO 6.5" oval lights (16.75" L x 4.25" H x 3.5" D)
- AL6503** Aluminum Box for THREE 6.5" oval lights (25" L x 4.25" H x 3.5" D)



## Polyethylene Mounting Boxes – Will not warp or crack



## Chrome Plated Plastic Bezels

- B2** 2" round chrome plated plastic bezel
- B25** 2.5" round chrome plated plastic bezel
- B4** 4" round chrome plated plastic bezel
- B55** 5.5" rectangular chrome plated plastic bezel
- B65** 6.5" oval chrome plated plastic bezel



# COLOR SAFETY FLASHERS



## LED 2 Function Safety Flashers with Heavy Duty Magnets

- HF18A-PHD** Amber light, 18 LED
- HF18R-PHD** Red light, 18 LED
- HF18W-PHD** White light, 18 LED
- HF18SG-PHD** Green light, 18 LED

**Comes with 2 magnets – 25 lbs. pull each**

These reliable safety flashers feature 18 highly visible, super bright LEDs that can be seen up to 1 mile away. They can be attached securely to the back of a vehicle, truck, car, trailer, emergency vehicle, etc. with the built-in magnets

The 18 LED lights can be set to flashing or steady lights. Use for any emergency situation – at home or on the road. All weather resistant. Approximate size is 6” wide by 4” high. Will flash for up to 32 hours (or more) with 4 AA alkaline batteries.



### Adjustable Magnetic Base

- HF18A-MB** Amber light, 18 LED
- HF18R-MB** Red light, 18 LED

- 6” wide x 4” high
- Battery-operated – takes 4 AA batteries
- Can flash or be steady on

**Adjustable, strong magnetic base with 40 lbs. pull**



### Portable Safety Lights

- HF24A** Amber
- HF24R** Red

- 24 LED diodes
- 7” wide x 3” high
- Can flash or be steady on
- Battery operated - needs 4 AA batteries
- Dual mounting capability

**Removable 70 lbs. pull magnet**



# LED ROOFTOP LIGHT BARS



34" long

## Multi-Function 34" LED Light Bar

STR-56

- Permanent mount & hardware included
- 34" long with 56 powerful amber LEDs
- 360 degree coverage

*\*\*6 Flash patterns including traffic control pattern, center-out, right to left and left to right*

## Multi-Function 23" LED Light Bar

STR-40 Permanent mount (hardware included)

- 23" long with 40 powerful amber LEDs
- 360 degree coverage

*\*\*6 Flash patterns including traffic control pattern, center-out, right to left and left to right*



23" long

## Multi-Function 51" LED Light Bar

STR51AAC

- 51" long with 18 Amber (4) diode modules
- 6 strobe flash patterns including traffic control right to left, left to right & center out
- Permanent mount hardware included
- Control box included
- 360 degree coverage



51" long

## Multi-Function 56" LED Light Bar

STR56AAC

- 56" long with 18 Amber (4) diode modules
- 6 strobe flash patterns including traffic control right to left, left to right & center out
- Permanent mount hardware included
- Control box included
- 360 degree coverage



56" long



# LED ROOFTOP LIGHT BARS



13" long

## Magnetic Mini Strobe Bar

**STR13A-MAG** Amber Only (not pictured)  
**STR13AW-MAG** Amber/White (pictured)

- 13" long x 8.5" wide x 3.25" high, 13 ft. cord
- 6 bright 10-watt LEDs, 360 degree coverage
- 10 Flash patterns controlled from cigarette lighter plug
- 2 strong magnets for mounting
- COB (Chip on Board) light source



11" long

## Amber 11" LED Light Bar

**STR11AP** Permanent Mount  
**STR11A-MAG** Magnetic Mount

- 11"L x 6.6"W x 1.75"H, 15' cord
- 40 Watts, 10-30V operating voltage
- 10 flash patterns
- Cigarette plug on/off switch
- IP67 waterproof rating

## Amber/White LED Magnetic Strobe Bar

**STR21AW-MAG**

- 21" long x 8.5" wide x 3.25" high, 13 ft. cord
- 10 bright 10-watt LEDs, 360 degree coverage
- 10 Flash patterns controlled from cigarette lighter plug
- 4 strong magnets for mounting
- COB (Chip on Board) light source which emits a brighter light than the standard LED light



21" long

## LED Amber/White Strobe with Dashboard Controller

**STR-LB56AW**

- 56" long Amber/White Strobe Light Bar
- 30 different flash patterns
- Control pad is small and mounts easily in the cab
- 25 foot cord from light bar to control pad
- LED side marker lights
- LED alley lights with on/strobe option
- LED Stop/Tail/Turn red rear facing lights
- LED take down lights with on/strobe option
- Has quiet mode, which allows you to use only the front or back of the light bar depending on traffic direction
- Arrow stick / traffic control built in with 7 patterns for each function
- Day/Night mode for 30% less brightness
- Adjustable mounting brackets with rubbers insulators included



56" long

# TRAILER LIGHTS & KITS



## LED Submersible Trailer Lights

- CPL001 Trailer light
- CPL002 Trailer light with license light
- 12 LEDs



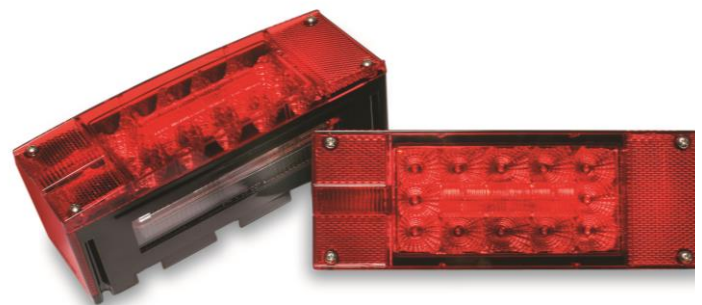
## LED Trailer Lights

- CPL100 Without license light
- CPL100L With license light
- 15 LEDs



## LED Over 80" Submersible Trailer Lights

- CPL001-80 Without license light
- CPL002-80L With license light
- Acrylic lens / high impact housing
- Stop/tail/turn rear and side reflector, side marker and license illuminator



## LED Over 80" Wide Submersible Trailer Lights

- CPL83 Without license light
- CPL83L With license light
- Acrylic lens, polypropylene housing
- 18 gauge wire



## Incandescent Trailer Lights

- TL01 Non-submersible S/T/T light
- TL01L Non-submersible S/T/T with license light





# AGRICULTURAL LIGHTS



## Incandescent Agricultural Light Kit

**AG-KIT-MAG** With magnet kit (pictured)  
**AG-KIT** Without magnet kit

- 4 amber lights (forward and rear facing) and 2 red lights (rear-facing) per kit
- 35' wishbone harness with 7-pin plug



## 35' LED Light Kit Combo

**AG-KIT-LED** Standard AG Kit (pictured)

**AG-KIT-LED-MAG** AG Kit with Magnet Kit

**AG-KIT-LED-HD** AG Kit with Heavy Duty cable

**AG-KIT-LED-HD-MAG** AG Kit with Heavy Duty cable & magnet kit

- 4 amber LED lights (forward and rear facing) & 2 red LED lights (rear facing) per kit
- Kit has turn signal function, tail light and brake functions
- 35' bonded cable (wishbone) with 7-pin plug



## Split Lens Towing Lights

**SPL30B-6** 30 ft. 6-plug

**SPL30B-7** 30 ft. 7-plug

**SPL50B-6** 50 ft. 6-plug

**SPL50B-7** 50 ft. 7-plug

- 120# pull magnets • 10 ft. between lights



## Heavy-Duty Incandescent Agricultural Light Kit

**AG-KIT-HD** Without Magnet Kit

**AG-KIT-HD-MAG** With Magnet Kit

- 4 amber LED lights (forward & rear facing) & 2 red LED lights (rear facing) per kit
- Kit has turn signal function, tail light and brake functions
- 35' bonded cable (wishbone) with 7-pin plug



## Pole Mount Rotating Beacon Lights

**STR-DIN-A**

- Polycarbonate amber lens
- 55-watt rotating light
- Flexible hard rubber case
- Mounts on standard DIN mount

## Pole Mount for Rotator Beacon

**MNT-DIN**

- Mounting bracket for DIN rotating light
- This bracket is a 2 wire hook up
- Light slides onto this pole for quick mounting
- Threaded to mount into 1" hole



## Tractor Light Control Box

**LCB400**

- Connect to 12V battery • Accepts 7 round plugs • Magnet Mount • Controls Tail lights, turn signals and emergency flashers

# COMMERCIAL TOW LIGHTS



## Incandescent Round Base Heavy-Duty Towing Lights

**HDTL30B**      4R plug    Stock box  
**HDTL30CC**    4R plug    Carry case

- 30 ft. cord
- 70# pull magnets
- 7 ft. span

Available with any plug. Just CALL us at 800-490-3158.



## LED Heavy-Duty Towing Lights

**LED30B-SQ**    90# Square magnets    Stock box  
**LED30B**        70# Round magnets    Stock box

- 30 ft. cord
- 4R Plug
- 7 ft. span

Available with any plug. Just CALL us at 800-490-3158.



## Magnetic Tow Lights

**ATL20A**      Clamshell packaging

- 20 ft. cord, 5 ft. span
- 4-flat plug & strong magnets



## E-Z Mount Tow Lights

**EZT20B**      Clamshell packaging

- 20 ft. cord
- 5 ft. span
- 4-flat plug





## LED Heavy-Duty Towing Lights

**LED30CC-SQ** 90# Square magnets Carry case  
**LED30CC** 70# Round magnets Carry case

- 30 ft. cord
- 4R plug
- 7 ft. span
- *Carrying Case color may vary*

*Available with any plug.  
 Just CALL us at 800-490-3158.*

## Incandescent Heavy-Duty Towing Lights

**HDTL30CC** 70# Round magnets Carry case  
**HD30CC-SQ** 90# Square magnets Carry case  
**HD30B-SQ** 90# Square magnets Stock Box

- 30 ft. cord
- 4R plug
- 7 ft. span
- *Carrying Case color may vary*

*Available with any plug.  
 Just CALL us at 800-490-3158.*



## Suction Cup Mounted Towing Lights in Case

**HDSC30CC** Incandescent  
**LEDSC30CC** LED

- Industrial strength
- 30 ft. cord
- 4R plug
- *Carrying Case color may vary*

*Available with any plug.  
 Just CALL us at 800-490-3158.*



# LED WORK LIGHTS WITH CREE DIODES



21" long

14" long

7" long

## Combo Flood/Spot LED Work Light Bars

- WL120WBARC** 120-watt LED bar with 40 CREE diodes – 8800 lumens
- WL72WBARC** 72-watt LED bar with 24 CREE diodes – 5280 lumens
- WL36WBARC** 36-watt LED bar with 12 CREE diodes – 2640 lumens

- 10-30V operation
- Light bars are rated IP67
- Mounting hardware included
- Die cast aluminum housing

## Combo Flood/Spot LED Off-Road Work Light Bars

- IP67 waterproof rating
- Lens is polycarbonate
- 12-24V operation
- 2 mounting brackets included



15" long

### **WL60WBARC**

- 5,400 lumens
- 60 Watts



22.5" long

### **WL100WBARC**

- 9,000 lumens
- 100 Watts



30" long

### **WL140WBARC**

- 12,600 lumens
- 140 Watts



50" long

### **WL240WBAR-CURV**

50" long

### **WL240WBARC** (not pictured) 41.5" long

- 21,600 lumens
- 240 Watts



50" long

### **WL288WBARC**

50" long

### **WL288WBAR-CURV** (not pictured) 51.4" long

- 26,000 lumens
- 288 Watts





## Build-A-Bar

**WL30BAB-SPT** Spot  
**WL30BAB-FLD** Flood

- Build your own customized light bar!
- Each unit is 7" long
- 30-Watt with CREE diodes
- 3000 lumens
- Easily connects together with hardware included
- Make any length or height you need!
- 10-30V operation
- Polycarbonate lens, IP67



Spot



Flood

## Work Light Bar Accessories

### Snap-On Lenses

<b>WL6ALENS</b>	6"	Amber Lens
<b>WL6RENS</b>	6"	Red Lens
<b>WL6BLENS</b>	6"	Black Lens
<b>WL8ALENS</b>	8"	Amber Lens
<b>WL8BLENS</b>	8"	Black Lens



- For quantities and sizes needed for your work light bar, please find your light bar on our website: [www.custerproducts.com](http://www.custerproducts.com)



WL36WBARC with  
ONE 6" Amber Lens



WL72WBARC with  
TWO 6" Red lenses

### Plug & Play Wiring Harnesses

**HARDT1** Wire harness with 1 DT waterproof connector, one relay and lighted switch

- Will light up one of the following: WL36WBARC, WL60WBARC, WL72WBARC, WL100WBARC, WL120WBARC & WL140WBARC

**HARDT2** Wire harness with 2 DT waterproof connectors, one relay and lighted switch

- Will light up two of the following: WL36WBARC, WL60WBARC, WL72WBARC, WL100WBARC, WL120WBARC & WL140WBARC

**HARATP1** Wire harness with 1 ATP waterproof connector, one relay and lighted switch

- Will light up one of the following: WL200WBARC, WL240WBARC, WL240WBAR-CURV, WL288WBARC, & WL288WBAR-CURV



# LED WORK LIGHTS

# LITE<sup>IT</sup>



## 18-Watt LED Slim Flood Light

### WL19F

- 1320 Lumens
- 10-30V operation
- 6.5" x 1.75" x 2.5"
- 90 degree flood
- Die cast aluminum housing,
- Polycarbonate lens



## 15-Watt Compact LED Light

### WL15SMTM

- 1260 Lumens
- 10-30V operation
- 1.75" x 3" x 0.5"
- 90 degree flood
- Rubber mounting pads
- Surface or pipe mount



## 80-Watt LED Spot/Flood Light

### WL80FS

- 6720 lumens
- 10-30V operation, IP69
- 7" Diam. x 8.5" H x 4.5" D
- 16 5-Watt CREE LEDs
- Die cast aluminum housing



## 22.5-Watt LED Slim Work Light

### WL22RCT

- 2850 lumens
- 10-30V operation, IP67
- 6" X 3.75" x 1.25"
- 60 degree flood pattern



## 48-Watt LED Pedestal Light

### WL48F

- 3840 lumens, IP67
- 10-30V operation
- 4.25" x 4.25" lens
- Stud or surface mount
- Unique diamond cut polycarbonate lens for diffused flood light



## 60-Watt LED Flood Light

### WL6000

- 5400 lumens
- 10-30V operation
- CREE diodes, IP67
- 90 degree flood pattern

### WL6000ALENS



## PAR 36 LED Retrofit 18-Watt

- WL18-HP** Flood
- WL18HP-TRAP** Trapezoid
- 1500 lumens
- 12-24V operation
- 4.5" diameter
- CREE diodes & polycarbonate lens
- Fits in PAR36 housing (CP2203)





## 18-Watt LED Flood Light

### WL18F

- 1350 lumens
- 10-30V operation
- Durable aluminum housing
- 4.5" diameter lens
- Stud mount & surface mount
- Waterproof sealed to IP67



## 18-Watt LED Flood Light

### WL18RCT

- 1350 lumens
- 10-30V operation
- 60 degree flood pattern
- 4-3/8" x 2-1/2" x 2-1/4"
- Stud mount & surface mount
- Waterproof sealed to IP67



## 9-Watt LED Wide Flood Light

### WL9RCT

- 720 lumens
- 10-30V operation
- 90 degree flood pattern
- 4-3/8" x 2-1/2" x 2-1/4"
- Stud mount & surface mount
- Waterproof sealed to IP67



## 10-Watt LED Flood Light

### WL10F

- 900 lumens
- 10-30V operation
- 40 degree flood pattern
- CREE diodes
- Stud mount & flush mount
- Waterproof sealed to IP67
- 2-5/8" x 2-5/8" x 2-5/8"



## 27-Watt LED Flood Lights

### WL93FR Round light WL93FW Square light

- 1900 lumens
- 10-30V operation
- Stud mount & surface mount
- Waterproof sealed to IP67



## 24-Watt LED Flood Lights

### WL83FR Round light WL83FQ Square light

- 1680 lumens
- 10-30V operation
- Stud mount & surface mount
- Waterproof sealed to IP67



## 20-Watt LED Flood Light

### WL20WF

- 1800 lumens
- 10-30V operation
- CREE diodes
- 4-3/8" x 2-1/2" x 2-1/4"
- Stud mount & surface mount
- Waterproof sealed to IP67



## 15-Watt LED Flood Light

### WL15F

- 1200 lumens
- 10-30V operation
- 4.25" x 4.25" lens
- Stud or surface mount
- Less than 1.5" thickness

# STROBE BEACONS



HF20RL



HF20RL-R



HF20RL-B



HF20RL-W

## LED Battery Operated Rotating Beacon *Magnet Mount*

- LED Rotating Beacon
- 25 lb. pull magnet
- Takes 4 AA Batteries
- Adjustable rotation speed
- 5" diameter x 4-1/4" high
- Use on farm equipment, warehouse equipment, cars or trucks



HF45A



HF45R

## LED Flashing/Rotating Beacon *Magnet Mount*

- Battery Operated (Takes 4 AA batteries)
- Can flash or rotate
- IP Rating 65
- Durable polycarbonate lens
- Strong magnetic mount
- Flashing: 180/min.
- Rotating: 85/min.



## 3.5" Amber LED Beacon

### STR30AM

- 3.5" diameter light with 5" diameter base, 4" tall
- Magnetic or permanent mount (screws not provided)
- One flash pattern
- 32 quint flashes per minute
- 30 amber LED diodes
- 7.5 Watts
- 10" cord with on/off switch



# CLASS I BEACONS



## 27-Watt LED Class I Rotating Beacon *Surface/Magnet Mount*

### STR27RFM

- Surface mount / magnetic mount
- Class I
- 10-30V operation
- 2 Patterns: Flashing & Rotating
- Cigarette plug
- Polycarbonate lens
- 5.59" diameter x 4.29" high

## Quad Flash 60 LED Strobe *Permanent Mount*

### STR-60LED

- Class I
- 10-30V operation
- Flange Mount
- 5" diameter by 5" high
- 60 bright LEDs



## Quad Flash 120 LED Strobe *Permanent Mount*

### STR-120LED

- Class I
- 10-30V operation
- Permanent mount with rubber case
- 5" diameter by 4-3/4" high
- 120 bright LEDs





# LED STROBES

# LITE<sup>IT</sup>



## LED Slim Line Strobes

- 19 flash patterns
- Can synchronize with other lights
- Very Low profile – only ½” thick!
- IP Rating: 67
- CREE Diodes
- Weatherproof with vibration resistant design
- 1.25” high x ½” deep
- 6-watts are 4.5” long
- 4-watts are 3.75” long



## Colors Available in 4-Watt

- STR41A Amber (pictured)
- STR41W White
- STR41AW Amber/White (pictured)



Super low-profile for discreet mounting!

## Colors Available in 6-Watt

- STR61A Amber (pictured)
- STR61R Red
- STR61W White
- STR61B Blue
- STR61AW Amber/White (pictured)
- STR61RW Red/White
- STR61RB Red/Blue



STR1AW-LED  
Amber and White

## 2 Double Color 18-Watt LED Lights

- Waterproof connectors
- 6-foot main cable
- 9-feet of cable between lights
- 14 different flash patterns



STR1RW-LED  
Red and White

- Low-power consumption LEDs
- 2-3/8” x 2” black bezel
- 1” diameter when used as hideaway
- Can be synchronized with multiple lights



## LED High Power Strobe Light

- STR3A Amber
- STR3R Red
- STR3W White

- DC 10-30V operation
- Available in amber, red and white
- 4-7/8” L x 1-3/4” H x 7/8” D
- Synchronize or stand-alone operation
- 15 different flash patterns
- Amp draw less than 0.5A





## LED High Power Strobe Lights

- Polycarbonate lens • Polished aluminum base
- 4-watt LEDs • 10-30V operation • 0.5 amp draw
- Extremely bright LEDs • Flush Mount
- 4.85" x 2" rectangular • Self Contained



**STRL4W**  
White



**STRL4A**  
Amber



**STRL4R**  
Red



**STRL4G**  
Green



## 10-Watt LED Strobes

- STR1A-LED** Amber
- STR1R-LED** Red
- STR1W-LED** White

- Each strobe is surface mount or flush mount w/ bracket (included)
- Extremely powerful 10-watt diode with 14 different flash patterns
- Lens is 1" diameter
- Can be mounted inside headlights and tail lights



## Multi-Function Strobe Relay for LED Lights

### STR-MRLY

- Hook up to any LED light and make it strobe
- Drives up to 420mA or a pair of "most" LED tail lights
- Several selectable flash patterns

## Quad Flash Strobe Relay for LED Lights

### STR-QRLY

- Hook up to any LED light and make it strobe
- Drives up to 420mA or a pair of "most" LED tail lights



**STR8W**



**STR8R**



**STR8A**



**STR8AG**



**STR8AW**

## Dual Row Strobes

- 15 flash patterns
- Synchronize function with more lights
- Operating voltage: 10-30V
- Surface mount
- 4-1/2" wide x 3" high x 1-1/4" thick
- Available in 5 color options

# LED TOW LIGHT BARS



- All units have side markers
- Cables sold separately



25" long

## BTR-25

- Powered by 4 pin socket



36" long

## BTR-36-SM

- Separate turn and brake signals
- Comes with both 4 and 7 pin sockets



48" long

## BTR-48-O

- Separate turn and brake signals
- Comes with 7 pin heavy duty round socket



48" long

## BTR-48-R

- Separate turn and brake signals
- Comes with both 7 pin heavy duty round socket



48" long

## BTR-48-RF

- Separate turn and brake signals
- 2 flashing amber lights that come on with markers
- Comes with 7 pin heavy duty round socket



48" long

## BTR-48-R9

- Separate turn and brake signals
- 2 extra 4" brake lights
- Comes with 7 pin heavy duty round socket

## Heavy-Duty Extensions

EXT30-4PP	30' cord	4 plug to 4 plug
EXT60-4PP	60' cord	4 plug to 4 plug





# INCANDESCENT TOW LIGHT BARS



- Rubber strap mounting
- Available in white PVC only
- New LED side markers
- Cables sold separately



36" long

## WP36SM

- Separate turn and brake signals
- Comes with both 4 and 7 pin sockets



48" long

## WP48O

- Separate turn and brake signals
- Comes with 4 and 7 pin sockets



48" long

## WP48R

- Separate turn and brake signals
- Comes with 4 and 7 pin sockets



48" long

## WP48R-F

- Separate turn and brake signals
- Includes 2 amber flashers that turn on with the markers
- Comes with 4 and 7 pin sockets



60" long

## WP60R

- Separate turn and brake signals
- Comes with 4 and 7 pin sockets



60" long

## WP60R-F

- Separate turn and brake signals
- Includes 2 amber flashers that turn on with the markers
- Comes with 4 and 7 pin sockets

## Heavy-Duty Extensions

EXT30-7PP	30'	14/7 cord	7 plug to 7 plug
EXT60-7PP	60'	14/7 cord	7 plug to 7 plug
EXT30-7PP-6	30'	16/6 cord	7 plug to 7 plug
EXT60-7PP-6	60'	16/6 cord	7 plug to 7 plug





Lite-It Wireless Tow Lights are unsurpassed in durability. Among the many features, our units are individually serialized to protect against loss, theft and prevent cross talk between other units in the vicinity. All Lite-it Wireless tow lights are FCC approved. Each bar or set have full stop, turn signal, tail light and side marker functions. The taillights only come on when they are needed thus saving battery life.

- **Make sure to register your light bar! No warranty work will be done on unregistered products.**
- Auto-grade circuitry
- All connectors are shrink-tube
- All lights are hard wired
- 3 year warranty
- FCC approved
- Individually serialized and programmed to eliminate cross talk between other units
- Lights come with transmitter, 12V charger and port covers
- Run times from 12 to 30 hours
- 1000 foot line of site visibility
- Charge indicator light



### 36" Wide with Amber/White Strobes

LIW-36STR-7R

- Two amber/white strobes operated on a separate switch
- Rubber strap mounting
- 7 Pin connection



### Two Individual Wireless Light Units

LIW-1 (set)

- 105# pull rubber coated magnet mounting
- 4 Pin connection



### Agricultural Wireless Tow Lights

LIW-AGKIT

- 120# pull rubber coated magnet mounting
- 2-1/2" strobes on front to warn oncoming traffic
- Available in safety green or black
- 7 blade connection (also available in 4 or 6 pin round)



### 23" S.M.A.R.T. Rider

LIWSR1

- Magnetic mount – Two 90# pull rubber coated magnets
- 4 pin connection (7 blade connection also available)



### RC-Monitor Kit

LIW-RC-MON

- Monitors battery strength and status
- 96 dB alarm and red warning light when bar is left behind
- Individually programmed to your light bar
- No additional wiring needed

### 25" Wide

LIW-250-4 (pictured)

LIW-250-FL-4 (not pictured)

- Three 2" center markers on LIW-250-4
- Oval amber flasher on a separate switch on LIW-250-FL-4
- Two 105# pull rubber coated magnet mounting
- 4 Pin connection





### 36" Wide

**LIW-36R-7R**

- Rubber strap mounting
- 7 pin connection

### 42" Wide

**LIW-42O-7R**

- Rubber strap mounting
- 7 pin connection



### 48" Wide

**LIW-48RFS-7R**

- Auto delay flasher that turns off when a turn signal or brake is applied
- Rubber strap mounting plus ratcheting straps
- 7 pin connection

### 48" Wide

**LIW-48R-7R**

- Rubber strap mounting
- 7 pin connection



### 36" Wide

**LIW-36RF-7R**

- Auto delay flasher that turns off when a turn signal or brake is applied
- Rubber strap mounting
- 7 pin connection

### 60" Wide

**LIW-60RFS-7R**

- Auto delay flasher that turns off when a turn signal or brake is applied
- Rubber strap mounting plus ratcheting straps
- 7 pin connection



### 60" Wide

**LIW-60R-7R**

- Rubber strap mounting
- 7 pin connection

# ACCESSORIES



## Rubber Mounting Grommets

<b>G2G</b>	2" Round	<b>G26G</b>	2.5" Rectangular
<b>G25G</b>	2.5" Round	<b>G55G</b>	5.5" Rectangular
<b>G25G-O</b>	2.5" Open Back	<b>G4G</b>	4" Round
<b>G25G-CB</b>	2.5" Closed Back	<b>G65G</b>	6.5" Oval



## Steel Mounts for Lights

<b>MNT2</b>	Fits 2" grommet and light
<b>MNT25</b>	Fits 2.5" grommet and light
<b>MNT4R</b>	Fits 4" grommet and light
<b>MNT65</b>	Fits 6.5" grommet and light



**4 Pin to 4 Pin  
Cable Union**  
BTR-4-CU



**7 Pin to 7 Pin  
Cable Union**  
BTR-7-CU

## Heavy-Duty Extensions

<b>EXT30B</b>	30'	4 plug to 4 socket
<b>EXT60B</b>	60'	4 plug to 4 socket



**Rubber Boots for Magnets**  
**MB100** Rubber Boots (pair)  

- Protects against scratching
- Fits CP0808 magnet



**Dual Purpose Mounting Bracket**  
**MNT-STRL**  

- Aluminum mounting bracket for STRL lights
- Bracket is pre-drilled for mounting 3 of our CPL1 lights



**Tow Light Partners**  
**TLP01** Tow light partner (pair)  

- For use with magnets on non-metallic surfaces

## Bulk Trailer Cable

<b>CP39D</b>	16/4 trailer cable
<b>CP39C</b>	16/6 trailer cable
<b>CP39F</b>	14/7 trailer cable
<b>CP39G</b>	14/2 trailer cable



**Square Magnetic Base**  
**CP70**  

- 90# pull

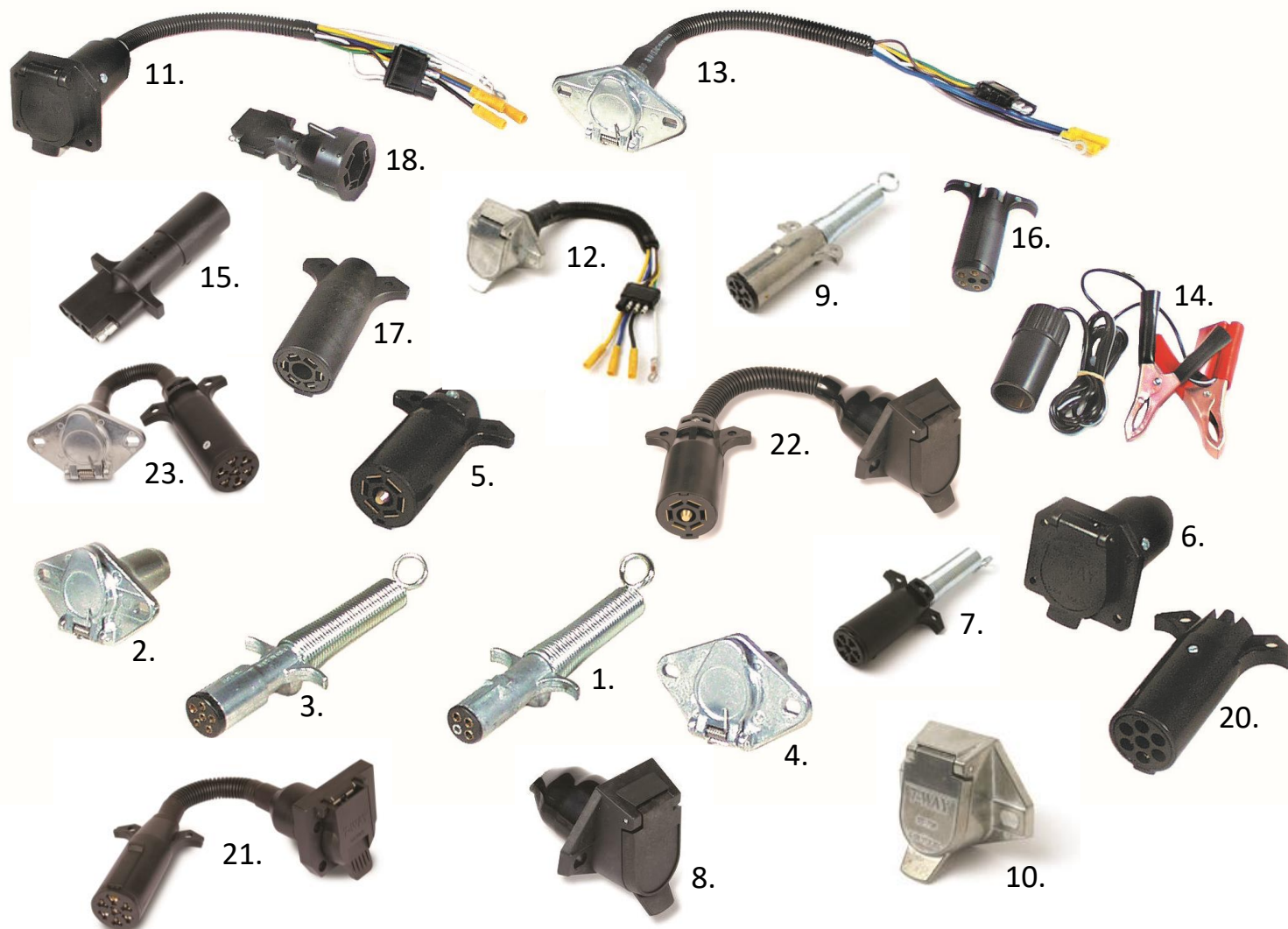


**Replacement Magnets**  
**CP0850** 35# pull 2-1/6" diameter  
**CP0865** 65# pull 2-3/4" diameter  
**CP0808** 95# pull 3-1/4" diameter  
**CP0885** 110# pull 3-7/8" diameter





# PLUGS, SOCKETS AND ADAPTERS



- |                        |   |                     |  |
|------------------------|---|---------------------|--|
| 1. <b>PLG4R</b>        | 4-round plug with wire guard, die cast, trailer end   | 13. <b>KIT-6R-4</b> | 6-round connector kit, prewired for 4-flat           |
| 2. <b>PLG4R-SKT</b>    | Receiver socket for 4-round plug, die cast, truck end | 14. <b>12VBA</b>    | 12V battery adapter, battery clips to cigarette plug |
| 3. <b>PLG6R</b>        | 6-round plug with wire guard, die cast, trailer end   | 15. <b>ADP001</b>   | Adapter, 4-round to 4-flat (1 piece)                 |
| 4. <b>PLG6R-SKT</b>    | Receiver socket for 6-round plug, die cast, truck end | 16. <b>ADP6R-4F</b> | Adapter, 6-round to 4-flat                           |
| 5. <b>PLG7B</b>        | 7-blade plug, no wire guard, ABS, trailer end         | 17. <b>ADP7B-6R</b> | Adapter, 7-blade to 6-round                          |
| 6. <b>PLG7B-SKT</b>    | 7-blade receiver socket, ABS, truck end               | 18. <b>ADP7B-4F</b> | Adapter, 7-blade to 4-flat                           |
| 7. <b>PLG7R</b>        | 7-round plug with wire guard, ABS, trailer end        | 19. <b>ADP7B-5F</b> | Adapter, 7-blade to 5-flat (not pictured)            |
| 8. <b>PLG7R-SKT</b>    | 7-round receiver socket, ABS truck end                | 20. <b>ADP7P-4F</b> | Adapter, 7-round to 4-flat                           |
| 9. <b>PLG7R-DC</b>     | 7-round plug with wire guard, die cast, trailer end   | 21. <b>ADP7R-7B</b> | Adapter, 7-round trailer to 7-blade truck end        |
| 10. <b>PLG7RSKT-DC</b> | 7-round receiver socket, die cast, trailer end        | 22. <b>ADP7B-7R</b> | Adapter, 7-blade to 7-pin (for lights)               |
| 11. <b>KIT-7B-4</b>    | 7-blade connector kit, prewired for 4-flat            | 23. <b>ADP7R-4R</b> | Adapter, 7-round to 4-round socket                   |
| 12. <b>KIT-7P-4</b>    | 7-pole connector kit, prewired for 4-flat             |                     |  |

# SPECIALTY PRODUCTS



## FKL6W

- 6-watts
- Blue Spotlight with clear lens
- 8 degree spot beam
- IP Rating: 67
- 2 3-watt CREE diodes

## Blue Spot Lights

- Use on agricultural sprayers to increase visibility!
- Use on fork lifts to increase warehouse safety!



## FKL8W

- 8-watts
- Blue Spotlight
- 9-32V operation
- IP Rating: 68
- 2 4-watt CREE diodes



## Flash Controller with Remote

### FLASH-CNTRL

- 12 flash patterns & steady-on feature
- 400-watt output



## Green or Red Boat "Bow" Light – LED

- |                  |       |
|------------------|-------|
| <b>BOW-GR-B</b>  | Green |
| <b>BOW-RED-B</b> | Red   |



## Back-Up Alarm

### BK97DB

- 97 dB
- 12-24V operation
- Surface Mount



## 3 Ft. Extension Cord with Illuminated Switch

EXT3-CIG



## LED License Lights

- |                   |        |
|-------------------|--------|
| <b>LL-LED-CHR</b> | Chrome |
| <b>LL-LED</b>     | Black  |
- 2 wire



## Clear Interior LED Light

### CPL33C

- With chrome bezel
- 4 LED
- Built-in 2 wire



# SMV & CONSPICUITY

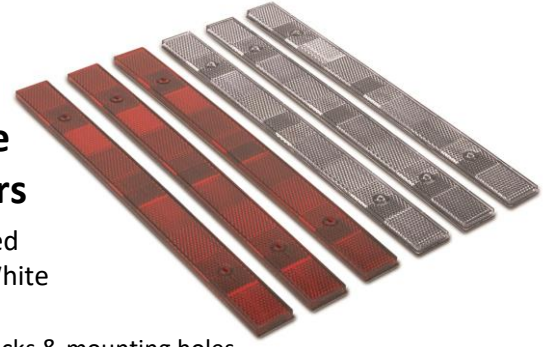


## 1/2 Moon Reflectors

- RFL-HMA – Amber
- RFL-HMR – Red
- RFL-HMA-12 – Amber 12-pack
- RFL-HMR-12 – Red 12-pack
- Adhesive backs

## Adhesive Reflectors

- RFL-12R Red
- RFL-12W White
- 12" x 1"
- Adhesive backs & mounting holes

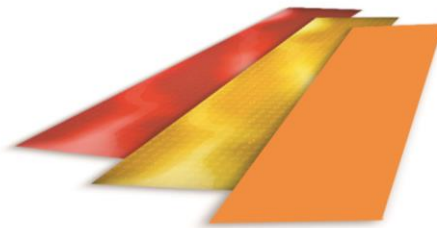


# CONSPICUITY / REFLECTIVE TAPE STRIPS



## Rolls

CTRW-30RL	30' roll	Red/White reflective
CTRW-150RL	150' roll	Red/White reflective
CTRW-150RL-DP	150' roll	Red/Silver reflective (diamond plate pattern)
CTRED-30RL	30' roll	Red reflective
CTRED-150RL	150' roll	Red reflective
CTYELLOW-30RL	30' roll	Yellow reflective
CTYELLOW-150RL	150' roll	Yellow reflective
CTOR-30RL	30' roll	Fluorescent orange
CTOR-150RL	150' roll	Fluorescent orange
CTWHITE-30RL	30' roll	Silver reflective
CTWHITE-150RL	150' roll	Silver reflective



## Strips

CT-AMBER	9" strip	Amber reflective
CT-RED	9" strip	Red reflective
CT-OR	9" strip	Fluorescent orange
CTRW-18	18" strip	Red/white reflective

## Emergency Warning Triangles

### EMT3-KIT-1

- Weighted
- Three in compact case



## Reflective Slow Moving Vehicle (SMV) Emblem

- EMB20A Adhesive SMV sticker
- EMB20GM Galvanized metal SMV sign
- EMP20P Plastic backed SMV sign
- EMB-HDW-SKT Mount kit receiver
- EMB-HDW-SPD Mount kit spade

• All SMV signs conform to ASAE S276.5



# INCANDESCENT LIGHTS



- |                  |   |                 |  |
|------------------|---|-----------------|--|
| <b>G119A</b>     | 4" X 1.5" Amber Lamp w/ Reflex, 1 Wire                    | <b>G2R-K</b>    | 2" Round Red Light, Grommet, Plug                                  |
| <b>G119R</b>     | 4" x 1.5" Red Lamp w/ Reflex, 1 Wire                      | <b>G2RPC</b>    | 2" Round Red Sealed Clearance/Marker Light                         |
| <b>G120A</b>     | 4" x 2" Amber Sealed Bullseye Light                       | <b>G3A</b>      | 3 13/16" Amber Sealed Clearance/Marker Light                       |
| <b>G120B-C</b>   | Chrome Plated Steel Bracket for 120 Series Lights         | <b>G3A-K</b>    | 3 13/16" Amber Light, Mounting Bracket                             |
| <b>G120R</b>     | 4" x 2" Red Sealed Bullseye Light                         | <b>G3B-B</b>    | Black Mounting Bracket for G3A, G3R, CPL375A, CPL375R              |
| <b>G25A</b>      | 2.5" Round Amber Sealed Clearance/Marker Light            | <b>G3B-C</b>    | Chrome Mounting Bracket for G3A, G3R, CPL375A, CPL375R             |
| <b>G25A-K</b>    | 2.5" Round Amber Light, Grommet, Plug                     | <b>G3R</b>      | 3 13/16" Red Sealed Clearance/Marker Light                         |
| <b>G25APC</b>    | 2.5" Round Amber Sealed Clearance/Marker Light, PC Rated  | <b>G3RA</b>     | 3 13/16" Red/Amber Sealed Clearance/Marker Light                   |
| <b>G25AR-K</b>   | 2.5" Round Amber Light w/ Reflex, Grommet, Plug           | <b>G3RA-K</b>   | 3 13/16" Red/Amber Light, Mounting Bracket                         |
| <b>G25B-G</b>    | Surface Mount Bracket for 2.5" Lights w/ Grommet          | <b>G3R-K</b>    | 3 13/16" Red Light, Mounting Bracket                               |
| <b>G25G</b>      | 2.5" Round Rubber Grommet                                 | <b>G42A</b>     | 4" x 2" Amber Oblong Marker Light                                  |
| <b>G25G-CB</b>   | 2.5" Round Rubber Grommet, Closed Back                    | <b>G42R</b>     | 4" x 2" Red Oblong Marker Light                                    |
| <b>G25G-O</b>    | 2.5" Round Rubber Grommet, Open Back                      | <b>G4A</b>      | 4" Round Amber Sealed Turn Signal Light                            |
| <b>G25R</b>      | 2.5" Round Red Sealed Clearance/Marker Light              | <b>G4A-K</b>    | 4" Round Amber Light, Grommet, Plug                                |
| <b>G25R-K</b>    | 2.5" Round Red Light, Grommet, Plug                       | <b>G4CL</b>     | 4" Round Clear Sealed Back-Up Light                                |
| <b>G25RPC</b>    | 2.5" Round Red Sealed Clearance/Marker Light, PC Rated    | <b>G4CL-K</b>   | 4" Round Clear Light, Grommet, Plug                                |
| <b>G25R-R</b>    | 2.5" Round Red Sealed Clearance/Marker Light, w/ Reflex   | <b>G4G</b>      | 4" Round Rubber Grommet  |
| <b>G25RR-K</b>   | 2.5" Round Red Light w/ Reflex, Grommet, Plug             | <b>G4R</b>      | 4" Round Red Sealed Stop/Tail/Turn Light                           |
| <b>G26A</b>      | 2.5" x 1.25" Rectangular Amber Clearance/Marker Light     | <b>G4R-K</b>    | 4" Round Red Light, Grommet Plug                                   |
| <b>G26A-K</b>    | 2.5" x 1.25" Rectangular Amber Light, Mounting Bracket    | <b>G4R-R</b>    | 4" Round Red Sealed Stop/Tail/Turn Light, w/ Reflex                |
| <b>G26APC</b>    | 2.5" x 1.25" PC Rated Amber Sealed Clearance/Marker Light | <b>G55A</b>     | 5.5" x 3.5" Amber Sealed Turn Signal Light                         |
| <b>G26B-C</b>    | Chrome Mounting Bracket for G26A, G26R, CPL26A, CPL26R    | <b>G55A-K</b>   | 5.5" x 3.5" Amber Light, Grommet, Plug                             |
| <b>G26G</b>      | 2.5" Rectangular Rubber Grommet                           | <b>G55G</b>     | 5.5" Rectangular Grommet   |
| <b>G26R</b>      | 2.5" x 1.25" Red Clearance/Marker Light                   | <b>G55R</b>     | 5.5" x 3.5" Red Sealed Stop/Tail/Turn Light                        |
| <b>G26R-3BAR</b> | Identification Light Bar w/ 3 G26R Lights                 | <b>G55RCL</b>   | 5.5" x 3.5" Red Sealed Stop/Tail/Turn Light w/ Clear Back-Up Light |
| <b>G26R-K</b>    | 2.5" x 1.25" Rectangular Red Light, Mounting Bracket      | <b>G55RCL-K</b> | 5.5" x 3.5" Red Sealed Stop/Tail/Turn/Back-Up Light, Grommet, Plug |
| <b>G26RPC</b>    | 2.5" x 1.25" Rectangular Red Light, PC Rated              | <b>G55R-K</b>   | 5.5" x 3.5" Red Sealed Stop/Tail/Turn Light, Grommet, Plug         |
| <b>G275A</b>     | 2 7/8" x 2 1/8" Amber Marker Light                        | <b>G65A</b>     | 6.5" Oval Amber Sealed Turn Signal Lamp                            |
| <b>G275R</b>     | 2 7/8" x 2 1/8" Red Marker Light                          | <b>G65A-K</b>   | 6.5" Oval Amber Light, Grommet, Plug                               |
| <b>G2A</b>       | 2" Round Amber Sealed Clearance/Marker Light              | <b>G65ASMA</b>  | 6.5" Oval Amber Side Marker Sealed Turn Signal Lamp                |
| <b>G2A-K</b>     | 2" Round Amber Light, Grommet, Plug                       | <b>G65CL</b>    | 6.5" Oval Clear Sealed Back-Up Light                               |
| <b>G2APC</b>     | 2" Round Amber Sealed Clearance/Marker Light              | <b>G65CL-K</b>  | 6.5" Oval Clear Light, Grommet, Plug                               |
| <b>G2B-G</b>     | Surface Mount Bracket for 2" Lights w/ Grommet            | <b>G65G</b>     | 6.5" Oval Rubber Grommet   |
| <b>G2G</b>       | 2" Round Rubber Grommet                                   | <b>G65R</b>     | 6.5" Oval Red Sealed Stop/Tail/Turn Lamp                           |
| <b>G2R</b>       | 2" Round Red Sealed Clearance/Marker Light                | <b>G65R-K</b>   | 6.5" Oval Red Light, Grommet, Plug                                 |



# PRODUCT WARRANTY

All CPL products – 3 Year Limited Warranty\*

All WL products – 3 Year Limited Warranty\*

All HID products – 1 Year Limited Warranty\*

Incandescent Lights – 3 Year Limited Warranty\*

All STR & STRL Lights – 3 Year Limited Warranty\*

All Battery Operated Lights – 2 Year Limited Warranty\*

All Wired Light Bars & Tow Lights – 3 Year Limited Warranty\*

All LIW Light Bars – 3 Year Limited Warranty\*

**\*Product must be received & inspected prior to credit issuance**

## Returns

Any and All returns must be authorized by Custer Products. Limited Warranty Items will be tested, repaired and returned whenever possible. If the product is deemed defective and within warranty, Custer Products will have the option to replace or credit the lowest product selling price within the warranty period

## Restocking Charge

A 15% restocking charge will be assessed to any non – defective product return

## Limited Warranty

Custer Products Ltd. warrants its products to be free from defects in material and workmanship under normal use and services as set forth in this Limited Warranty.

## General 1, 2 and 3 Year Limited Warranty

Custer warrants to the original purchaser only each new product made by Custer which proves to be defective in material or workmanship within the limited warranty period from the date of shipment. Custer will, at Custer's option, repair or replace without charge upon return to Custer of the defective product, provided any defect in the product is brought to the attention of Custer within the terms of this limited warranty period. The above limited warranty does not apply, and no warranty, either express or implied shall be applicable (a) to damage resulting from accident, alteration, misuse or abuse;(b) if the product is not installed, operated and maintained according to procedures recommended by Custer; or (c) if the serial number, date code, or other identifying marks affixed to the product by Custer are removed, obliterated or defaced. In no case shall the limited warranty be extended to defects in materials components (including but not limited to bulbs), or services furnished by third parties, nor to the installation of the product performed by third parties. If any repairs are made to any Custer's products, components, or if any parts thereof are replaced or altered, or any attachments are added to any Custer's products or components during the warranty period by anyone other than an authorized Custer distributor in accordance with service manuals, parts, accessories, or attachments, authorized by Custer for use in Custer's products, the purchaser shall pay for such repairs, parts, attachments and alterations without recourse against Custer, and Custer shall be relieved of responsibility for fulfillment of the limited warranty with respect to such affected products or components.

# GLOSSARY

**Amperage** – the strength of a current of electricity expressed in amperes; Amperage can be calculated by using formula:  $\frac{Watts}{Volts} = Amps$ .

**CREE** – market leading lighting manufacturer; known for longevity of 100,000 hour lifetime, brighter LEDs, and less amperage draw. Most Custer lights feature CREE LEDs.

**COB (Chips on Board)** – Multi-LED chips are packed together as one lighting module; significantly brighter than standard LED lights; saves energy and has a very long lifespan.

**Diode** – an electronic device that restricts current flow chiefly to one direction.

**Flange** – A part used to mount lights to surfaces.

**Flood** – wide pattern of light; light distribution is done by the lens, used best for short distance. Custer light bars and work lights have both flood and spot patterns.

**Incandescent** – emitting light as a result of the filament being heated.

**IP Rating** – used to define levels of sealing effectiveness of electrical enclosures intrusion from foreign bodies (dust, dirt) and moisture. Most Custer lights have an IP rating of 67, meaning they are extremely resistant to dust, dirt and water intrusion.

**Joule** – the equivalent of one watt of power radiated or dissipated for one second.

**LED** – Light Emitting Diode.

**Lumens** – the measure of the total “amount” of visible light emitted by a source; there are about 80 lumens per watt.

**PC Rated** – means that the light is viewable from a 90 degree angle.

**Polycarbonate** – tough transparent thermoplastics characterized by high impact strength; up to 10 times more impact-resistant than standard plastic or glass.

**Polyethylene** – lightweight thermoplastic that is resistant to chemicals and moisture.

**Spot** – narrow intense beam on a small area. Custer light bars and work lights have both spot and flood patterns.

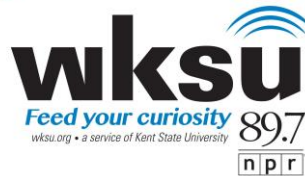
**Watts** – the measure of electrical power.



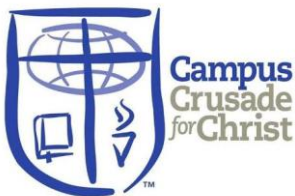
# CLUSTER PRODUCTS LIMITED

# PROUDLY SUPPORT

AND IT'S EMPLOYEES



www.HAMMERANDNAILS.ORG







North Canton, Ohio USA

[www.custerproducts.com](http://www.custerproducts.com)

Call: 800.490.3158

Fax: 330.497.9736



Distributed by: