



ALASKA
MUNICIPAL
LEAGUE

January
2023

Leaning Local

Strengthening Local Governments

Senate
Community
and Regional
Affairs

Nils
Andreassen



AML ORGANIZATIONAL DEVELOPMENT

Mission * Purpose * Objectives

The purpose of the Alaska Municipal League is:

- To safeguard the interests, rights, and privileges of Alaskan municipalities as they may be affected by Federal and State governmental actions.
- To secure cooperation among municipalities of the State in a thorough study of local problems and in the application of efficient methods of local government.
- To provide means whereby municipal officials may interchange ideas, experiences, and obtain expert advice.

The objectives of the Alaska Municipal League are:

- To perpetuate and develop the League as an agency for the cooperation of municipalities in the state of Alaska for the practical study of municipal affairs.
- To promote application of the best methods in all branches of municipal service by holding at least one conference annually for the discussion of problems of administration.
- To gather and circulate information and experience concerning the most approved methods of municipal administration.
- To secure general and municipal legislation at the state and federal levels which will be beneficial to the municipalities and inhabitants thereof, and to oppose legislation injurious thereto.
- To engage in the study and preparation of uniform ordinances, resolutions, and practices; and to do any and all other things necessary and proper for the benefit of the municipalities of Alaska.
- To develop appropriate membership services and programs that strengthen Alaskan local governments' ability to govern their own affairs and improve

Broad Scope



TUESDAY, AUGUST 9
Dena'ina Civic and Convention Center
ANCHORAGE, ALASKA

Tennessee's Road to Public Pension Plan Success

State officials explain the importance of outreach and education around retirement readiness

ARTICLE

November 4, 2022

Read time: 7 min

Projects: [Public Sector Retirement Systems](#)

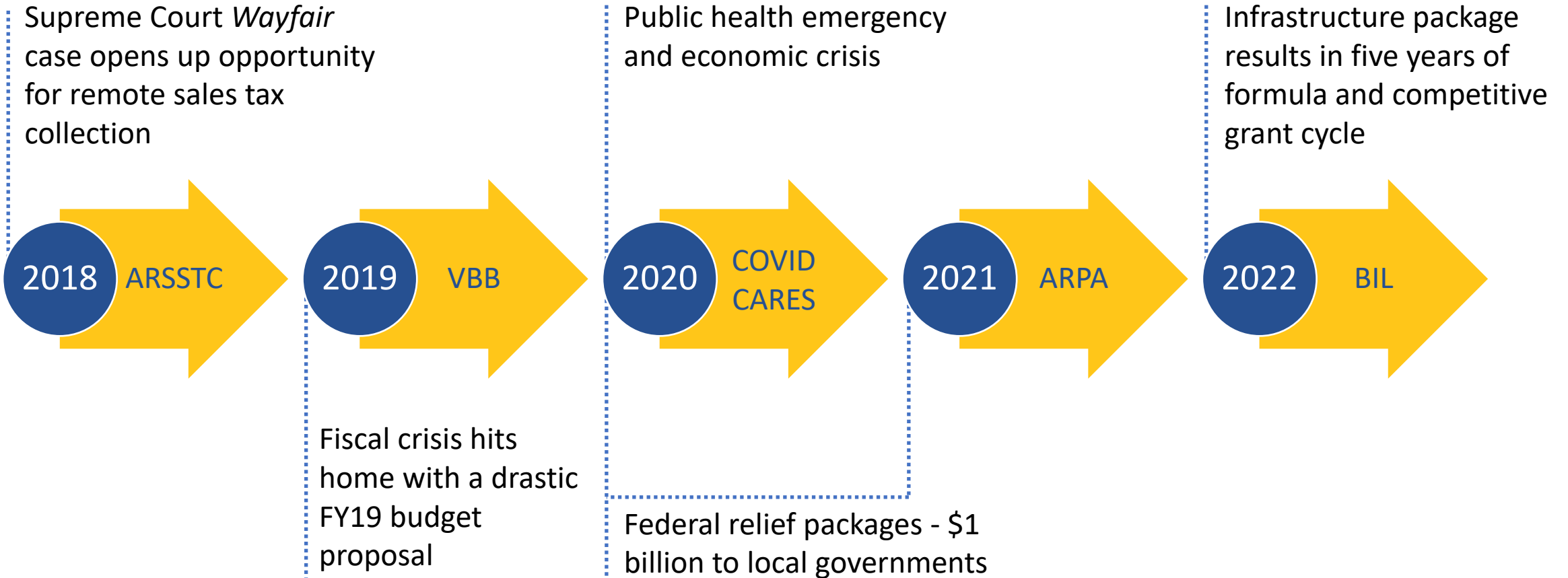
Municipality	2012 Rate	2012 Rev	2013 Rev
Bethel	0.00%		
Juneau	3.00%		
Cordova			
Craig	6.00%		
Denali Borough			
Dillingham	10.00%		1
Fairbanks	5.00%		
Fairbanks North Star Bc	5.00%		
False Pass			
Galena	0.00%		
Hoonah	0.00%		
Kake	0.00%		
Kotzebue	6.00%		
North Pole	5.00%		
Saint Mary's	3.00%		

ev	2020 Rate	2020 Rev	2021 Rate	2021 Rev
033	15%	\$629,669	15%	\$385,889
097	3%	\$949,200	3%	\$859,703
			6%	\$41,607
034	6%	\$122,462	6%	\$122,462
			5%	\$55,795
078	10%	\$299,005	10%	\$231,923
048	5%	\$2,333,130	5%	\$2,346,009
045	5%	\$1,031,438	5%	\$1,110,744
054				
050	6%	\$20,284	6%	\$20,551
080	6%	\$82,879	6%	\$65,592
019	3%	\$19,318	3%	\$618
024	6%	\$278,294	6%	\$315,512
043	5%	\$23,486	3%	\$5,234

Thomas Lochner, Chief Strategy Officer, Arctic Slope Telephone Association Cooperative, Inc.



Five Years



Federal Funding Coordination

ALASKA FEDERAL FUNDING

[HOME](#) [GRANTS](#) [ARPA](#) [INFRASTRUCTURE](#) [TRACKING](#) [RESOURCES](#) 

Maximizing Alaska's benefits from the American Rescue Plan Act (ARPA) and Bipartisan Infrastructure Law (BIL)

Between federal relief and infrastructure investment, Alaska's State, local, and Tribal governments have the opportunity to make formative change and address incredible need.

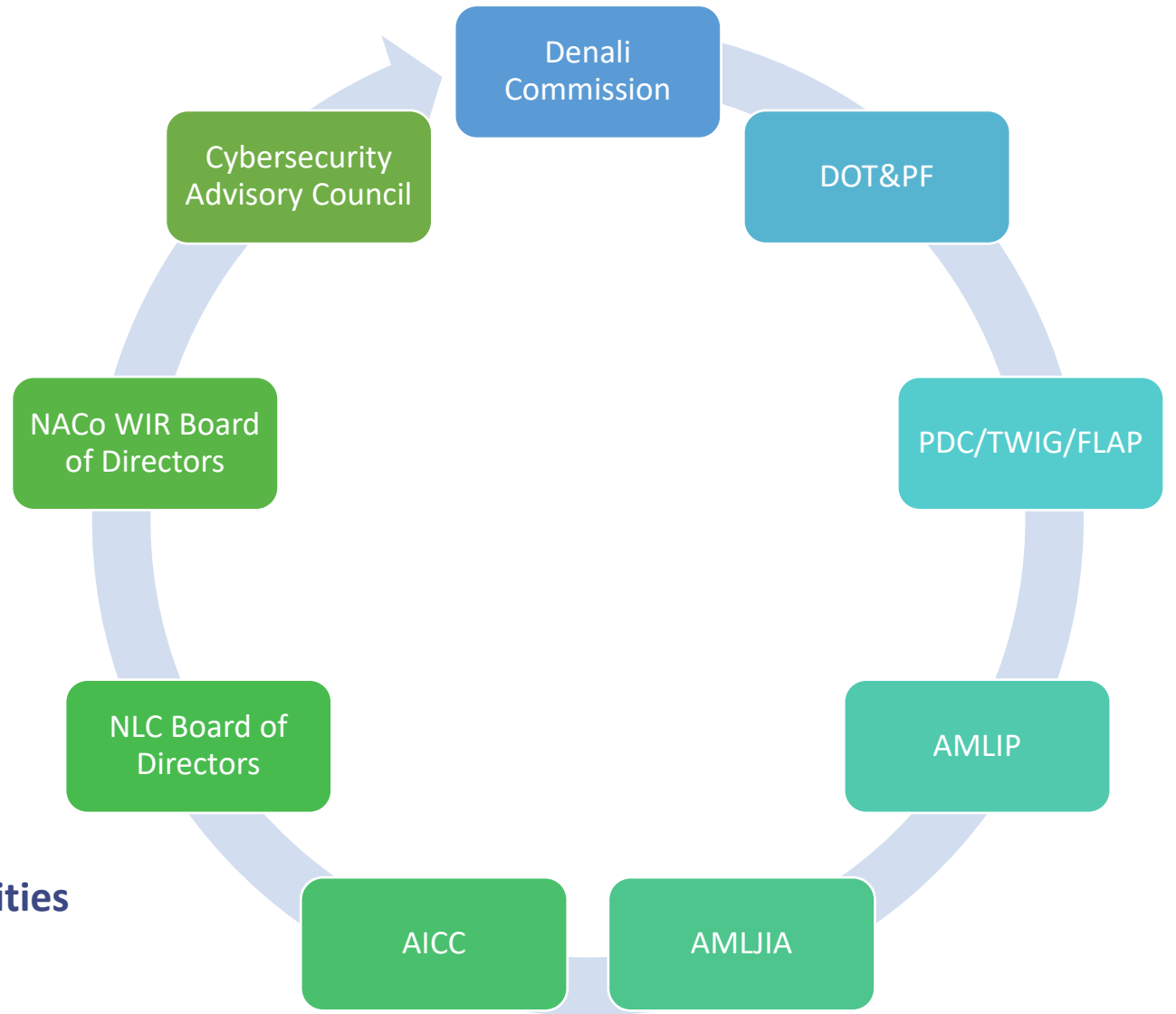
Begin your search here...

Search

This website is a clearinghouse for information and resources to help Alaska organizations make the most of federal funding available under the **American Rescue Plan Act (ARPA)** and the **Bipartisan Infrastructure Law (BIL)**. This collaborative effort focus on resources relevant to Alaskans, tracking funds coming to Alaska as well as current grant opportunities.

Roles to Remember

- National Association of Counties
- National League of Cities
- Partnerships
- Alaska Infrastructure Coordinating Committee
- AML Joint Insurance Association
- AML Investment Pool
- Federal Lands Access Program
- Alaska Dept. of Transportation and Public Facilities





ALASKA'S LOCAL GOVERNMENTS

ALASKA'S LOCAL GOVERNMENTS

Education

34 municipal
school districts

4 greater than
State contribution

Transportation/ Public Works

Road Miles = DOT&PF
37 Electric Utilities
72 Ports and Harbors
112 Water/Wastewater

Public Safety

70 with police powers

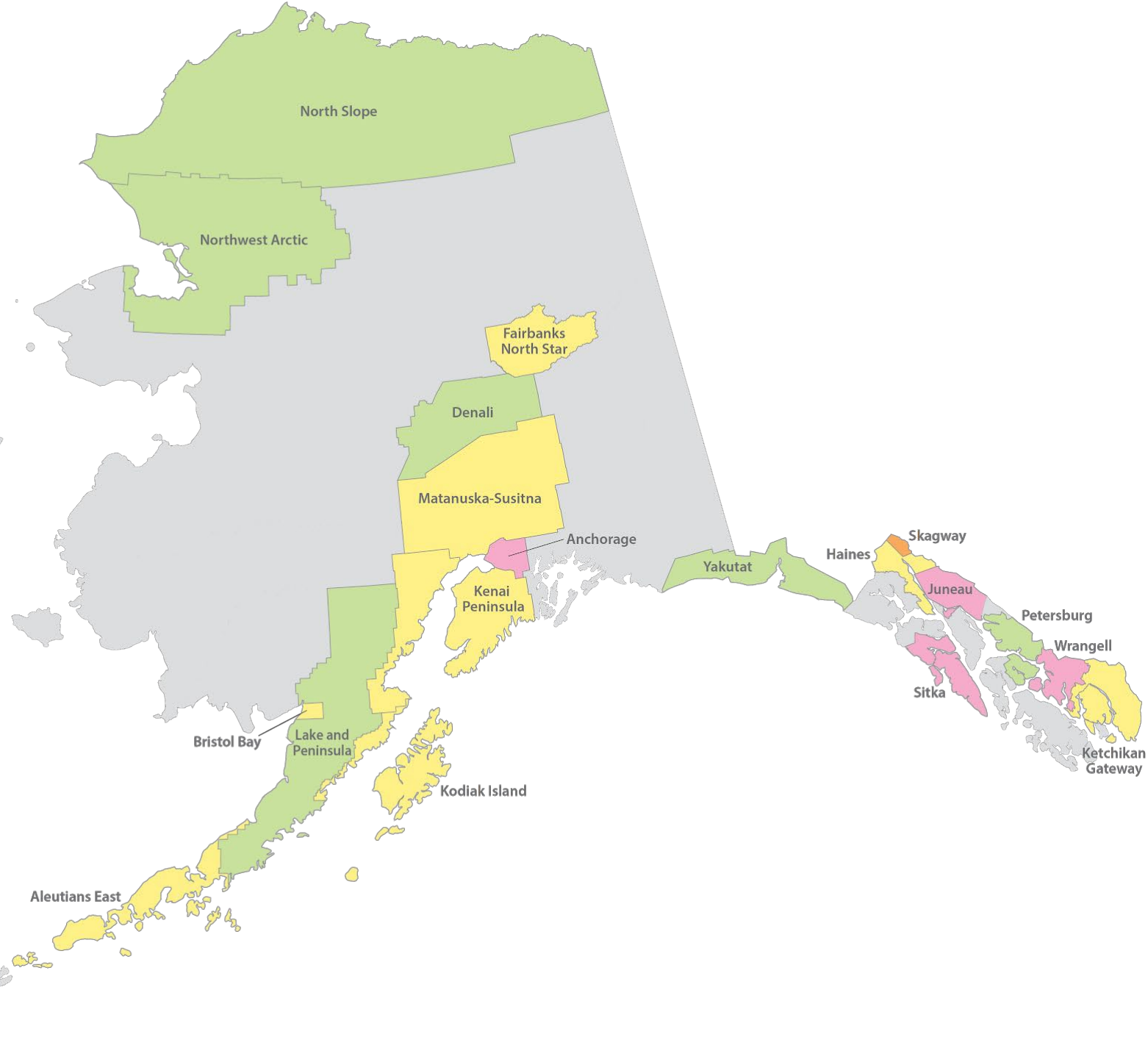
40 with combined
budgets \$75 million
more than DPS

Quality of Life

47 Public Libraries
Parks and Recreation
Community Pools

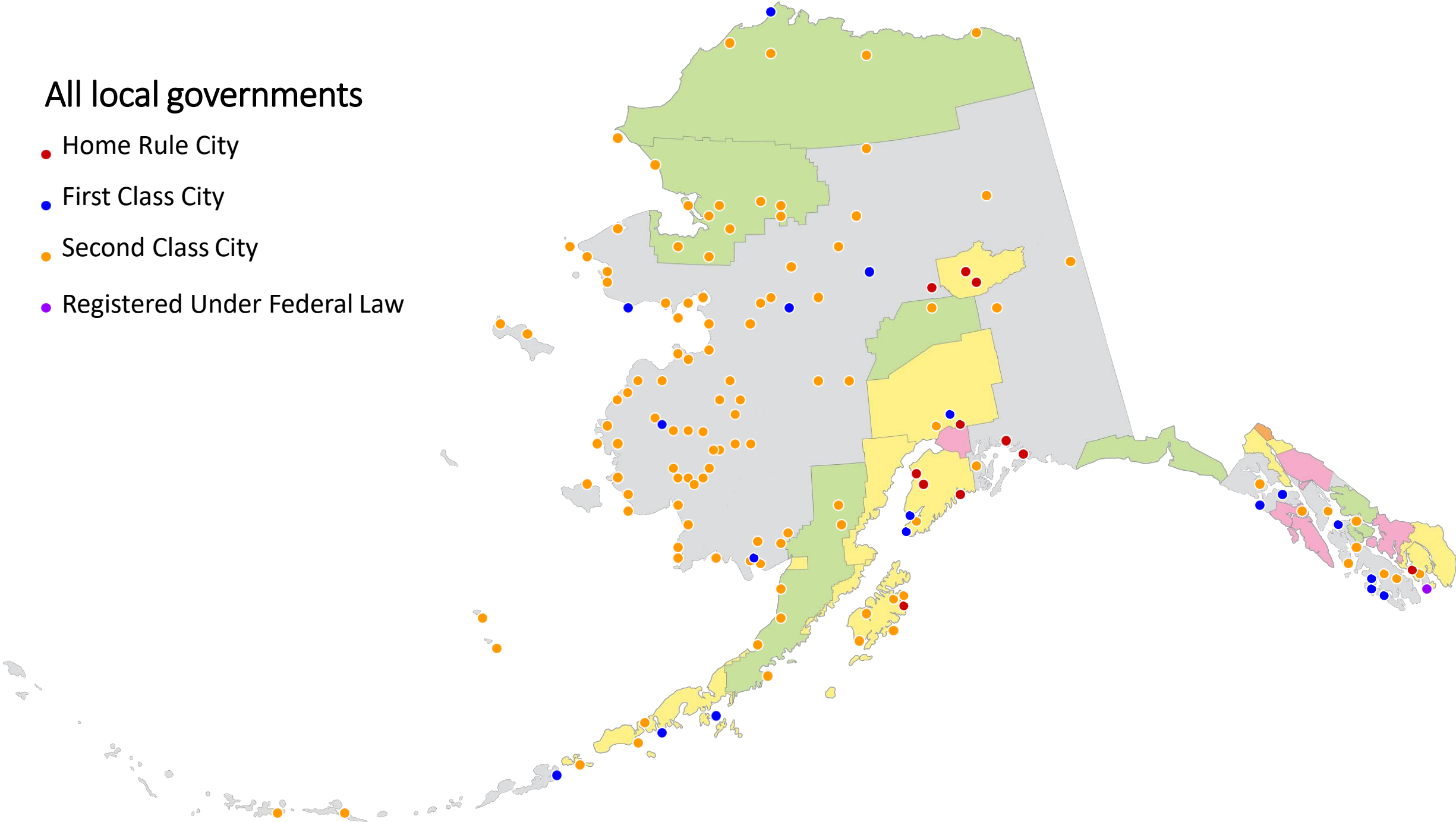
Borough Classification

- Non-unified Home Rule
- Unified Home Rule
- First Class Borough
- Second Class Borough
- Unorganized Borough



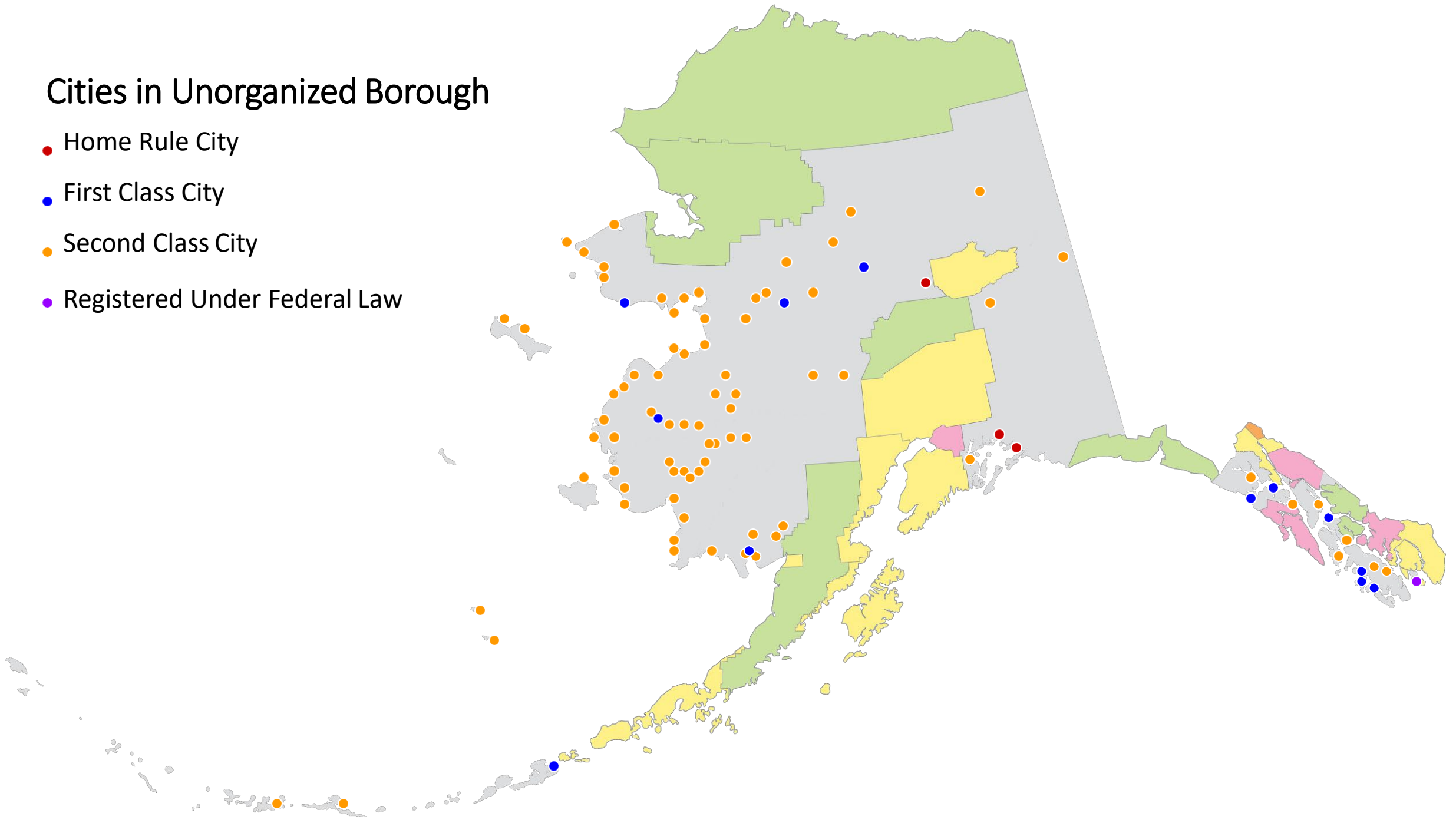
All local governments

- Home Rule City
- First Class City
- Second Class City
- Registered Under Federal Law



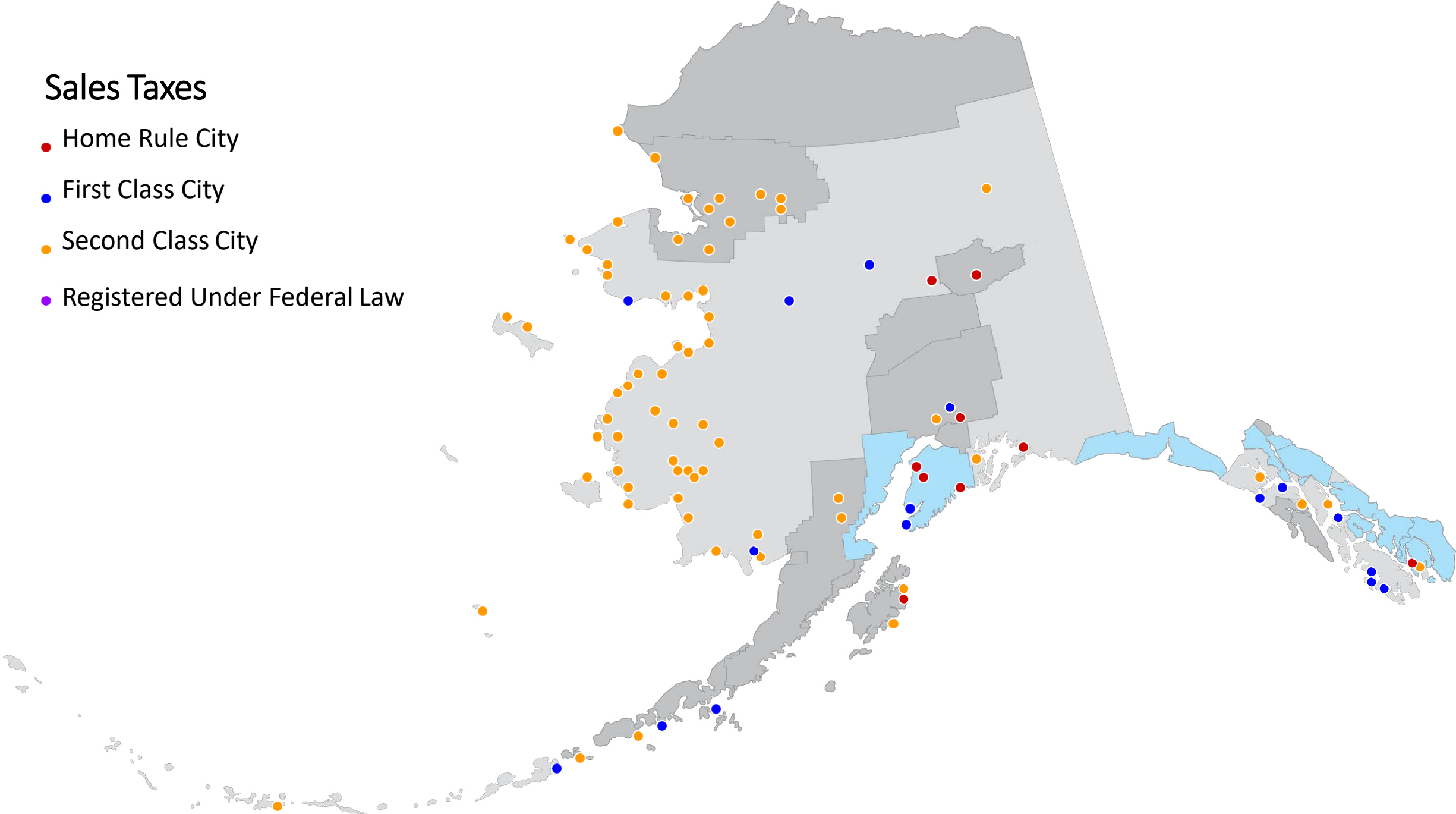
Cities in Unorganized Borough

- Home Rule City
- First Class City
- Second Class City
- Registered Under Federal Law



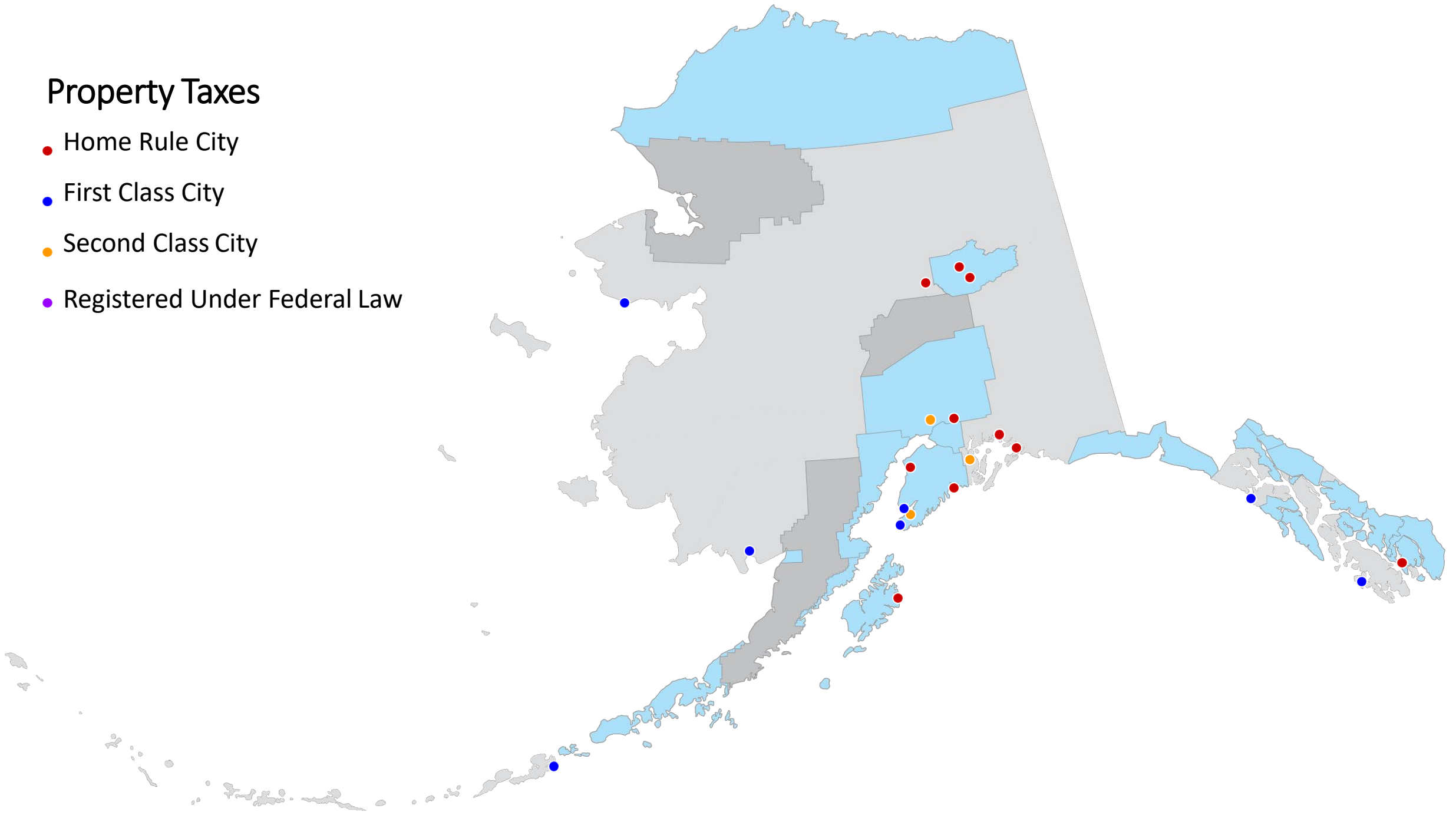
Sales Taxes

- Home Rule City
- First Class City
- Second Class City
- Registered Under Federal Law



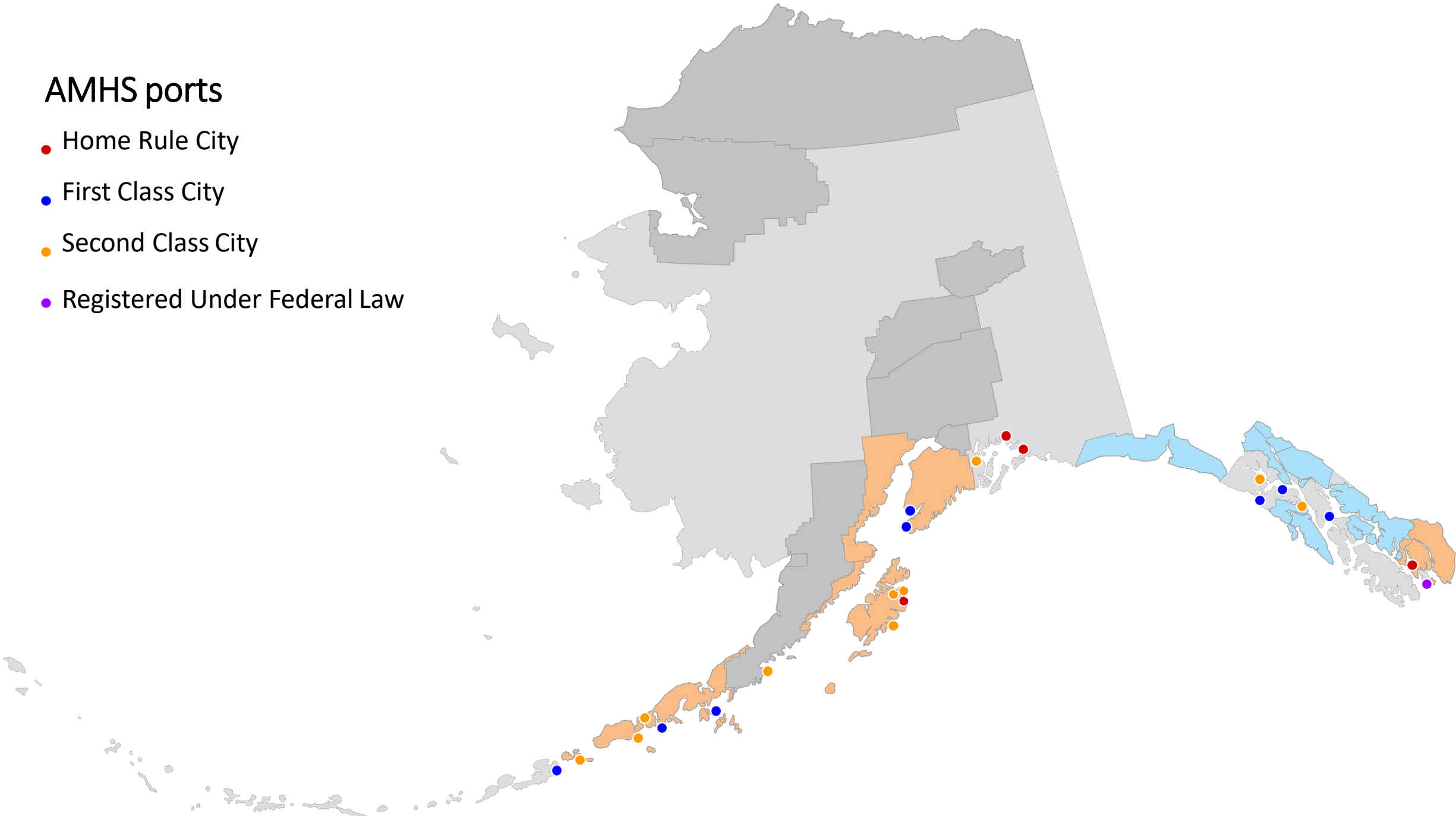
Property Taxes

- Home Rule City
- First Class City
- Second Class City
- Registered Under Federal Law



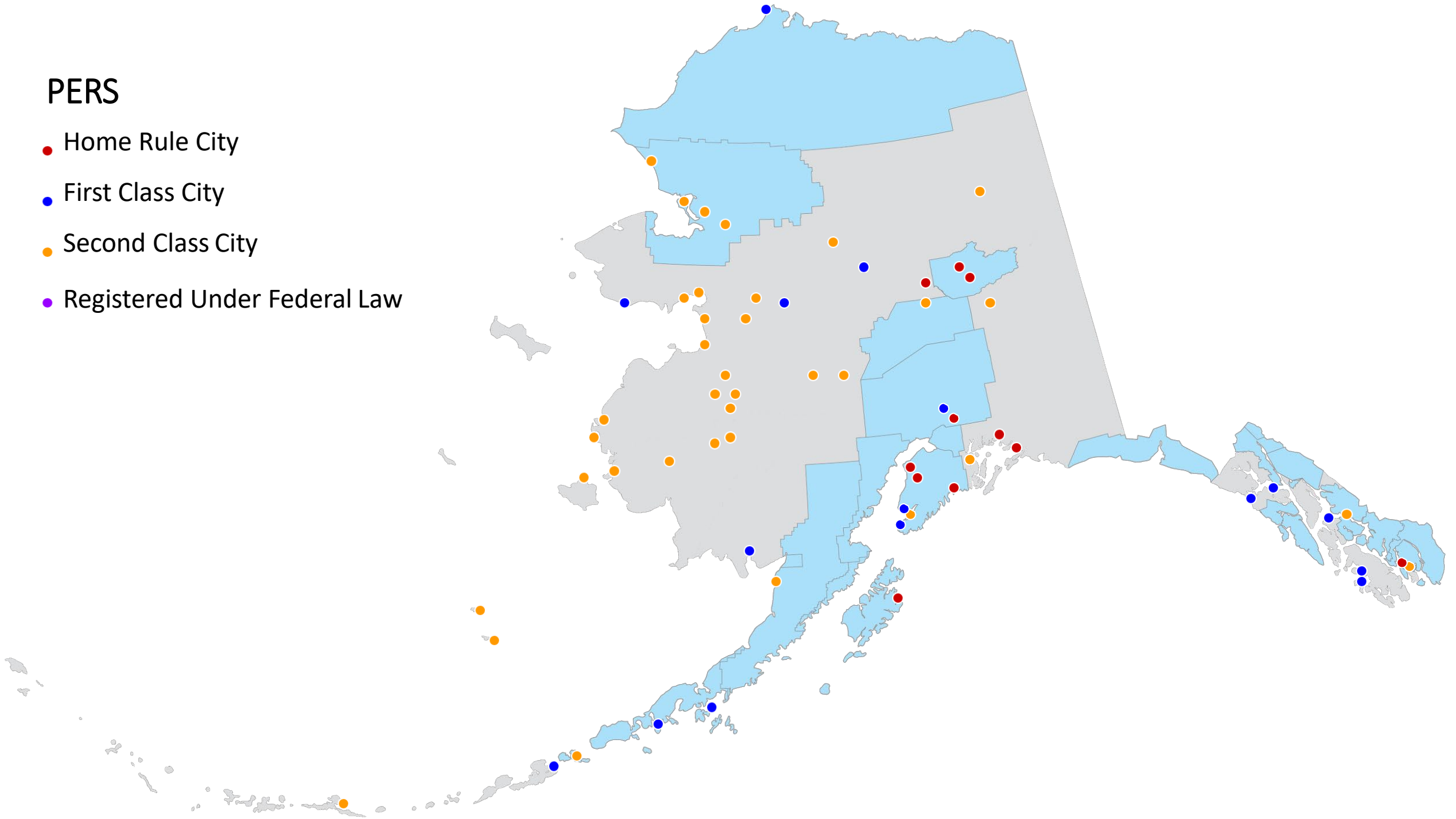
AMHS ports

- Home Rule City
- First Class City
- Second Class City
- Registered Under Federal Law



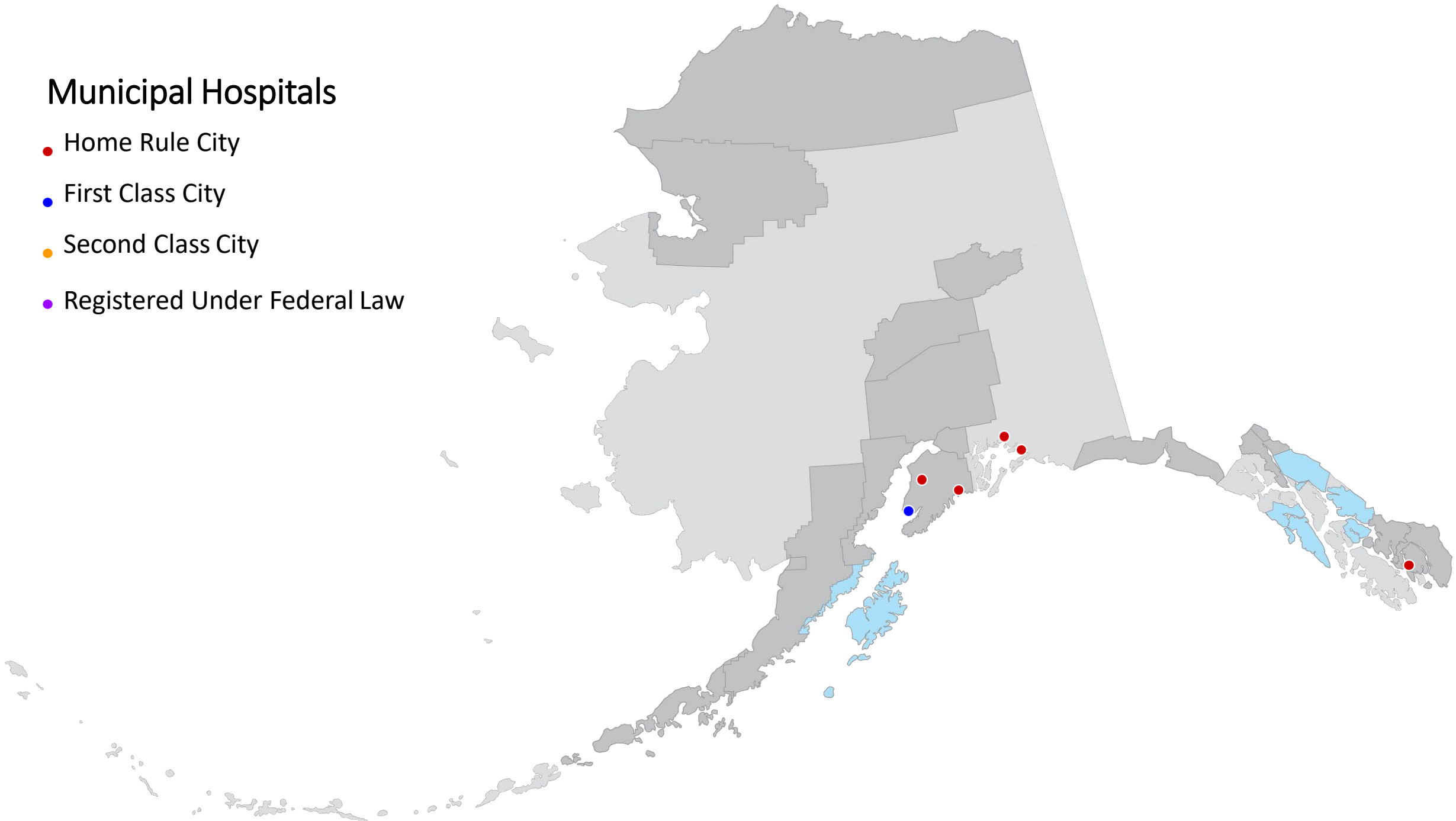
PERS

- Home Rule City
- First Class City
- Second Class City
- Registered Under Federal Law



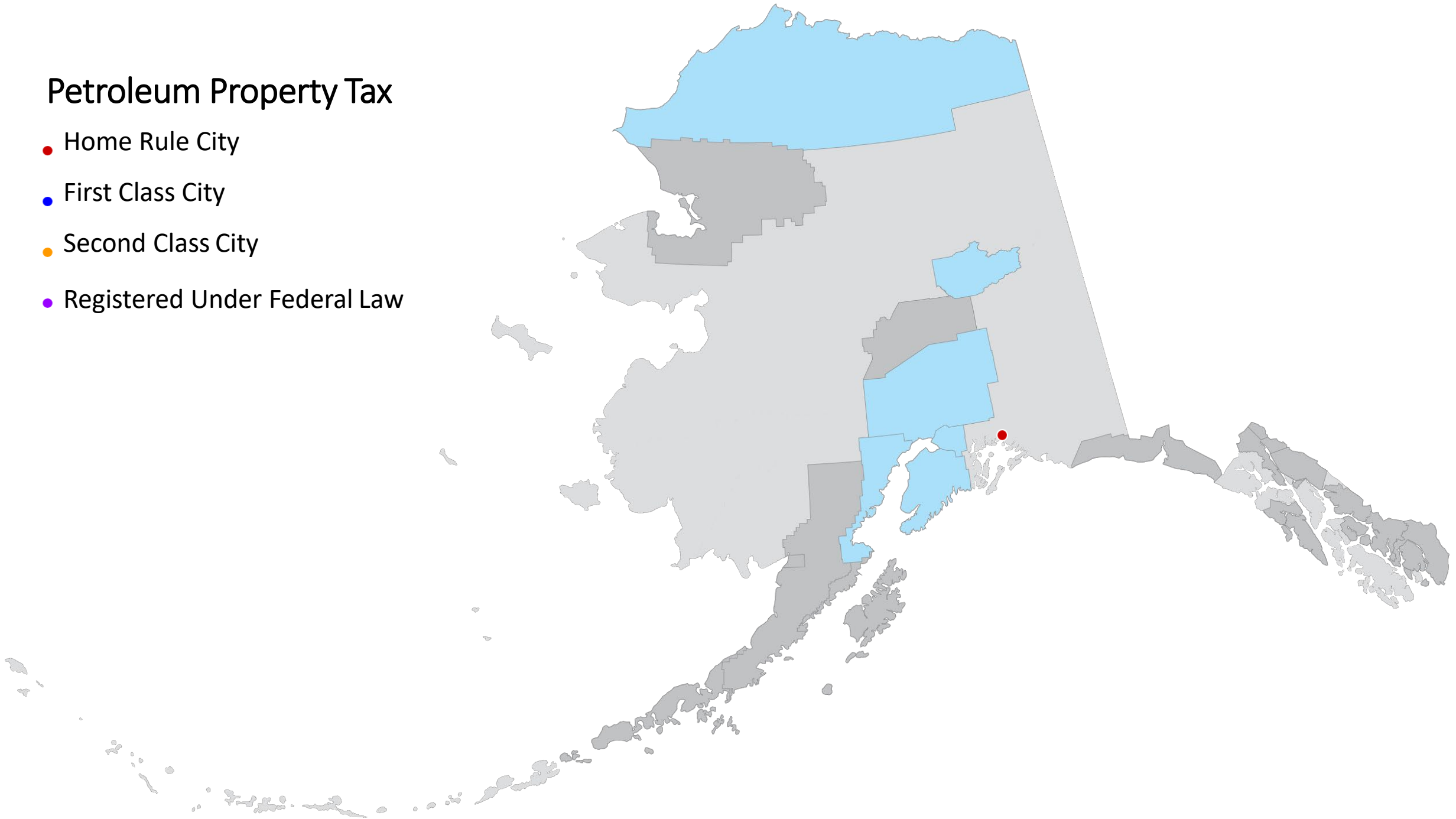
Municipal Hospitals

- Home Rule City
- First Class City
- Second Class City
- Registered Under Federal Law



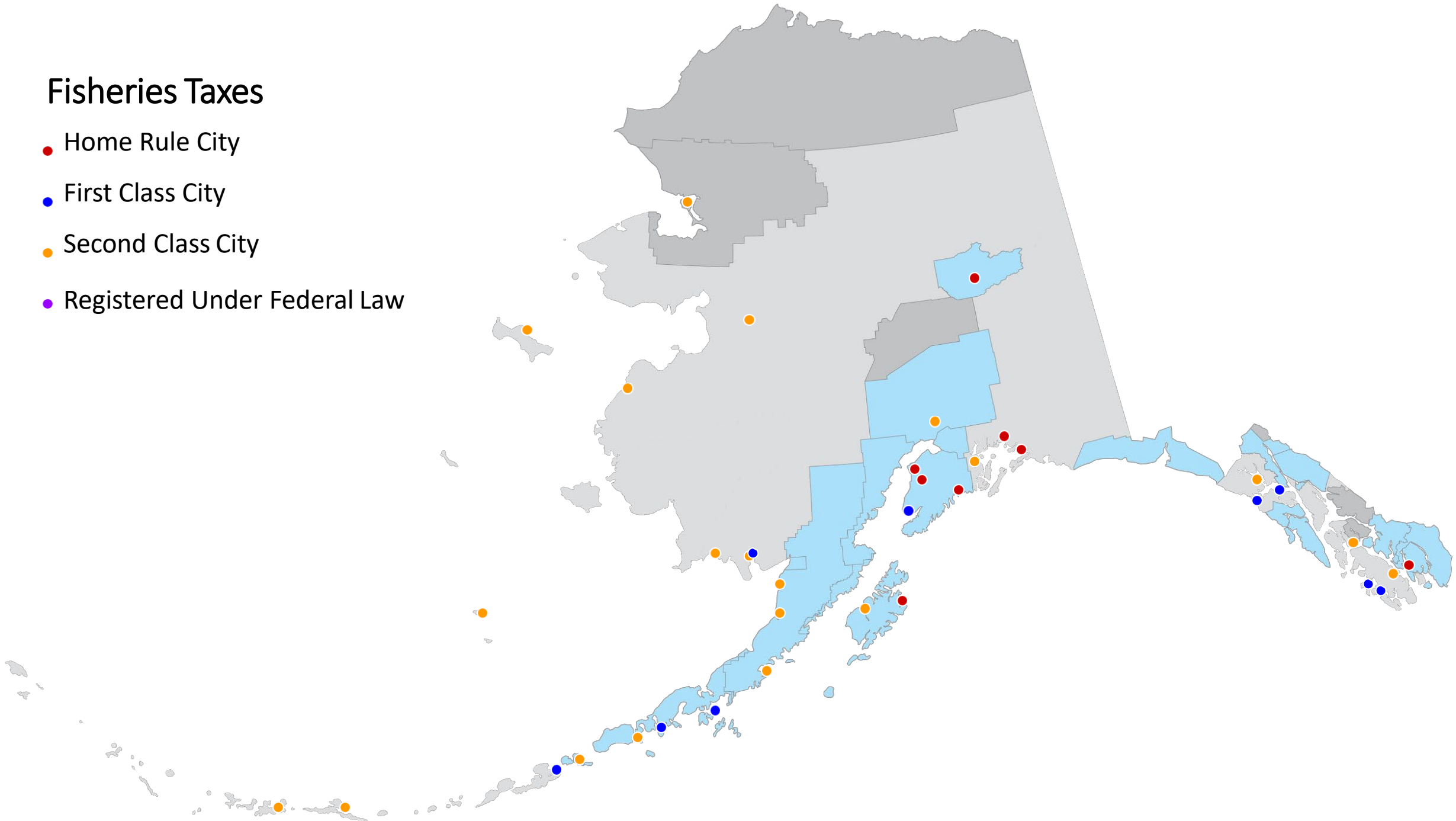
Petroleum Property Tax

- Home Rule City
- First Class City
- Second Class City
- Registered Under Federal Law



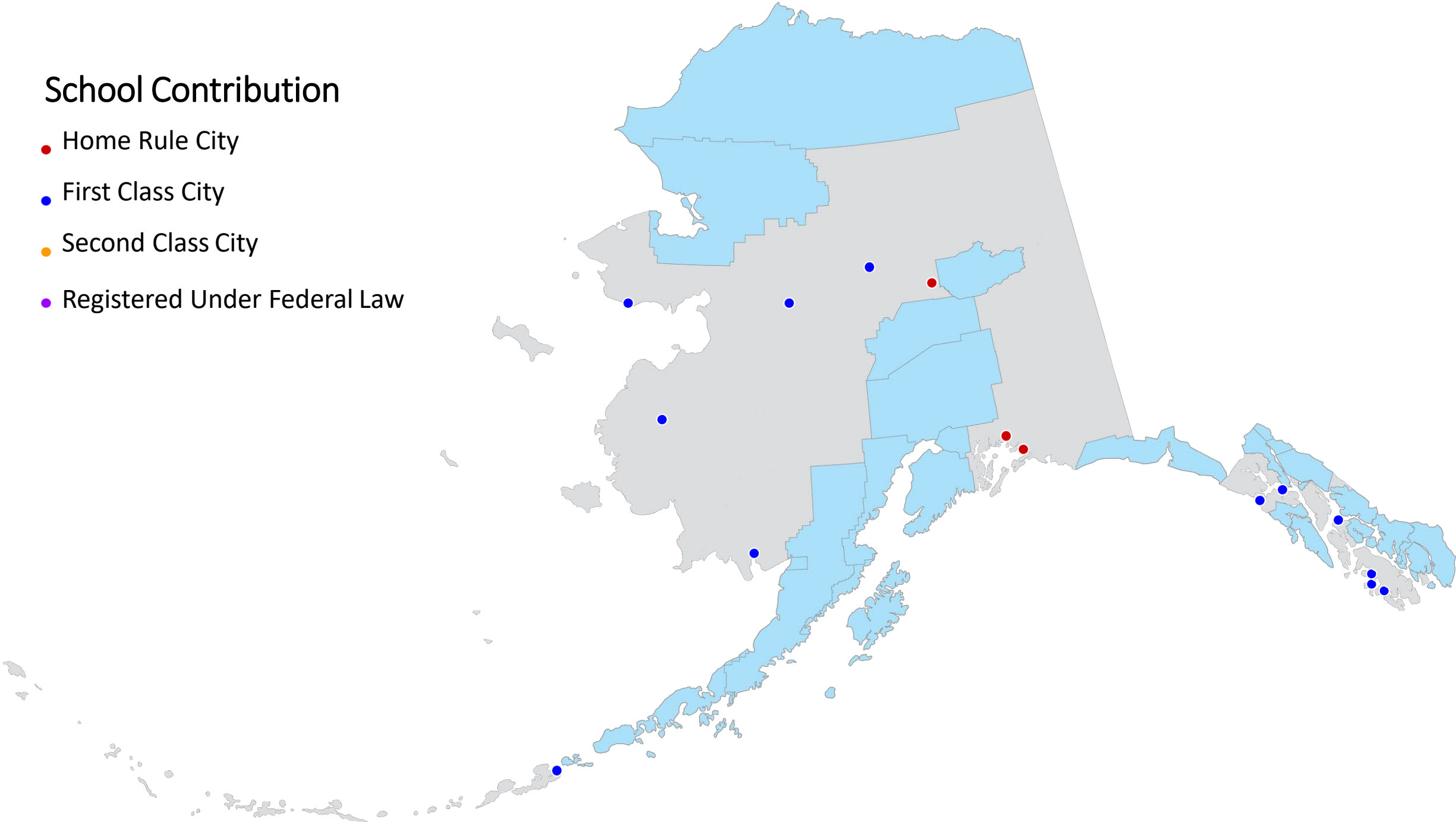
Fisheries Taxes

- Home Rule City
- First Class City
- Second Class City
- Registered Under Federal Law



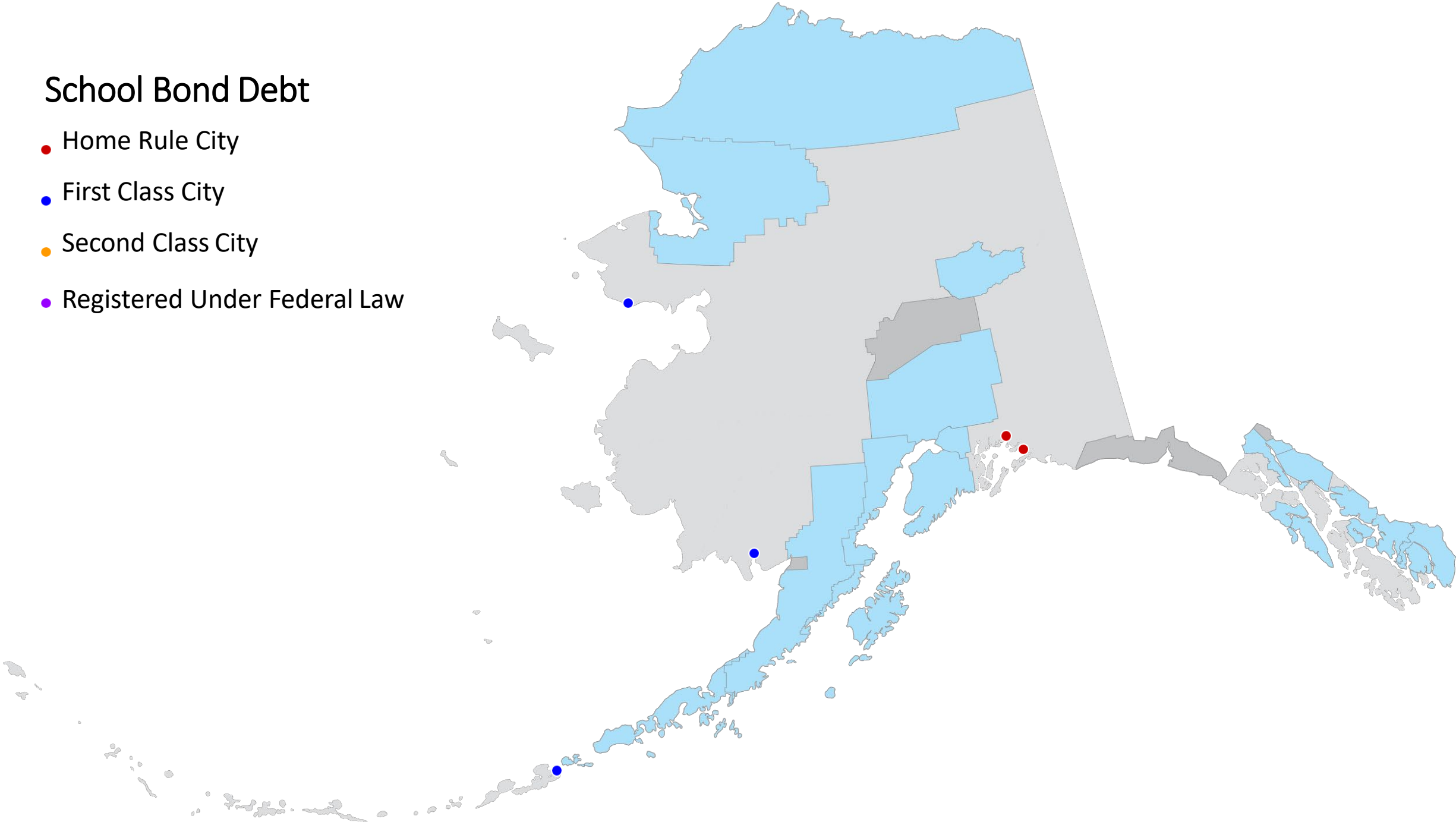
School Contribution

- Home Rule City
- First Class City
- Second Class City
- Registered Under Federal Law



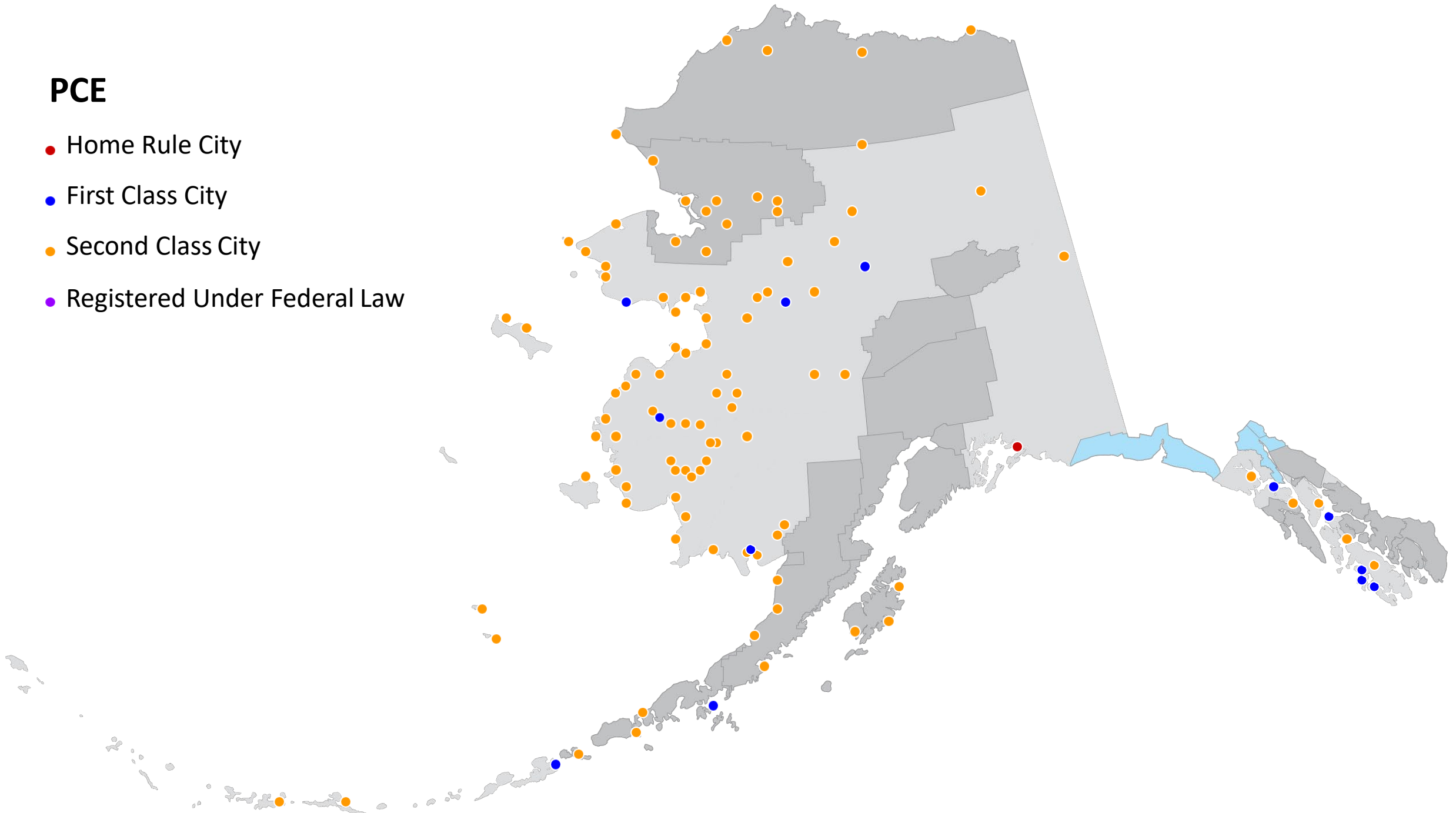
School Bond Debt

- Home Rule City
- First Class City
- Second Class City
- Registered Under Federal Law



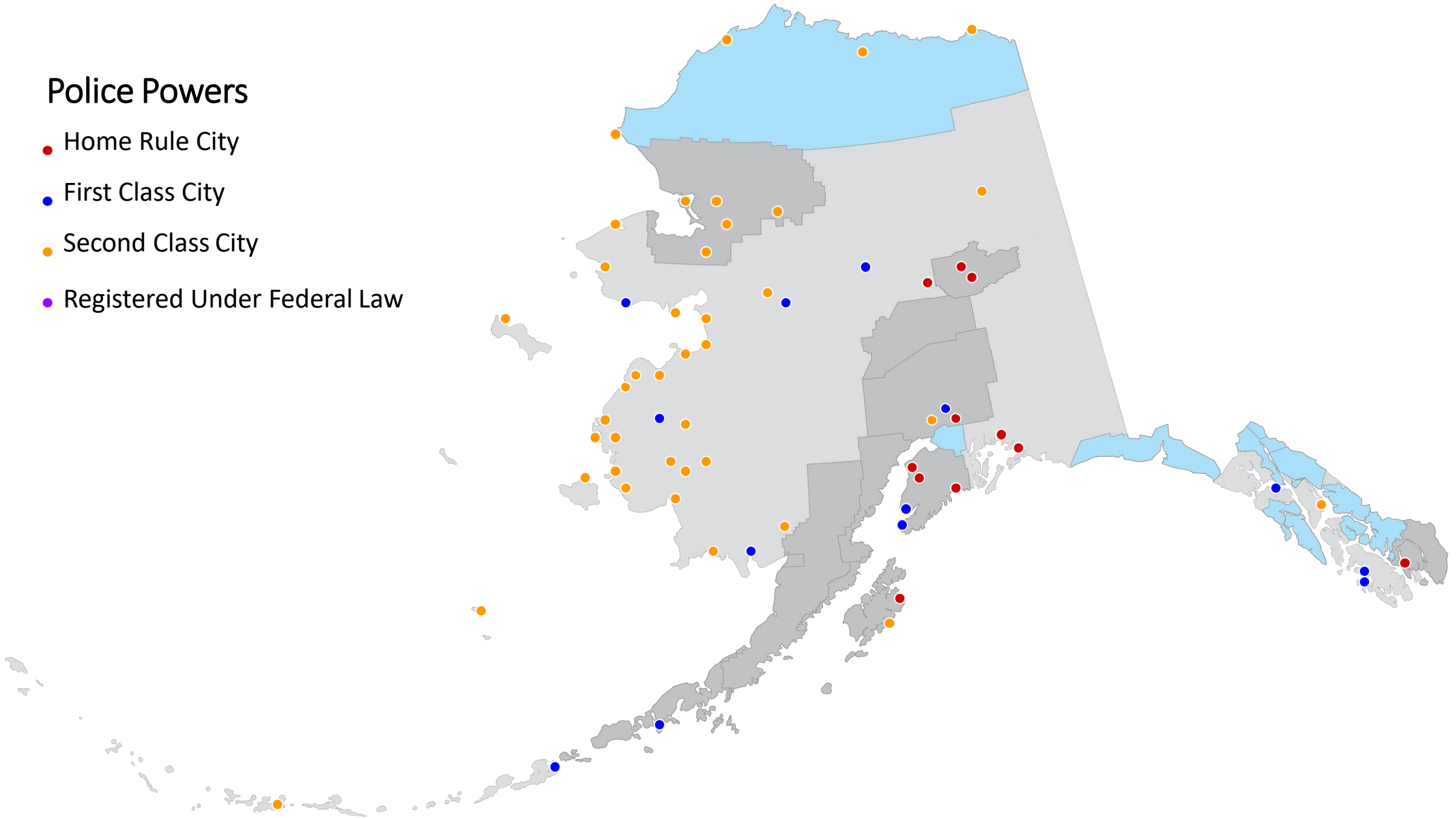
PCE

- Home Rule City
- First Class City
- Second Class City
- Registered Under Federal Law



Police Powers

- Home Rule City
- First Class City
- Second Class City
- Registered Under Federal Law





AML MEMBER PRIORITIES AND ADOPTED RESOLUTIONS

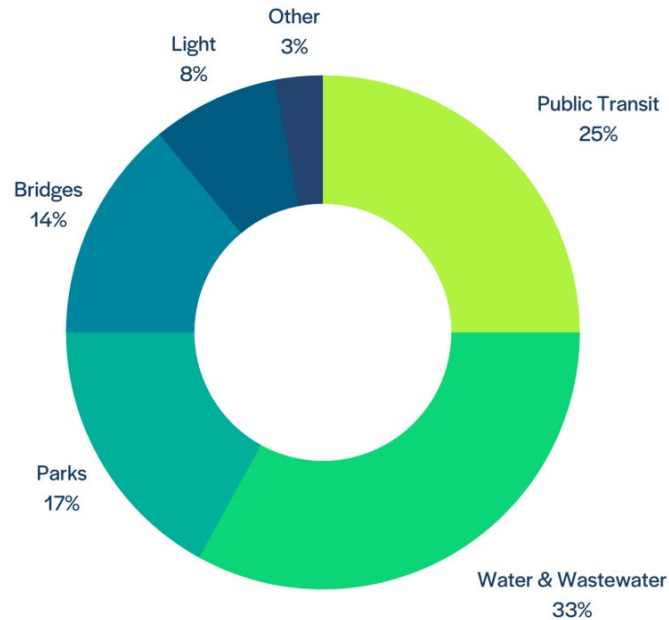
Cross-Cutting Impacts

Inflation Is Cutting Into States' Big Infrastructure Windfall

STATELINE ARTICLE | November 30, 2022 | By: Jenni Bergal | Read time: 3 min

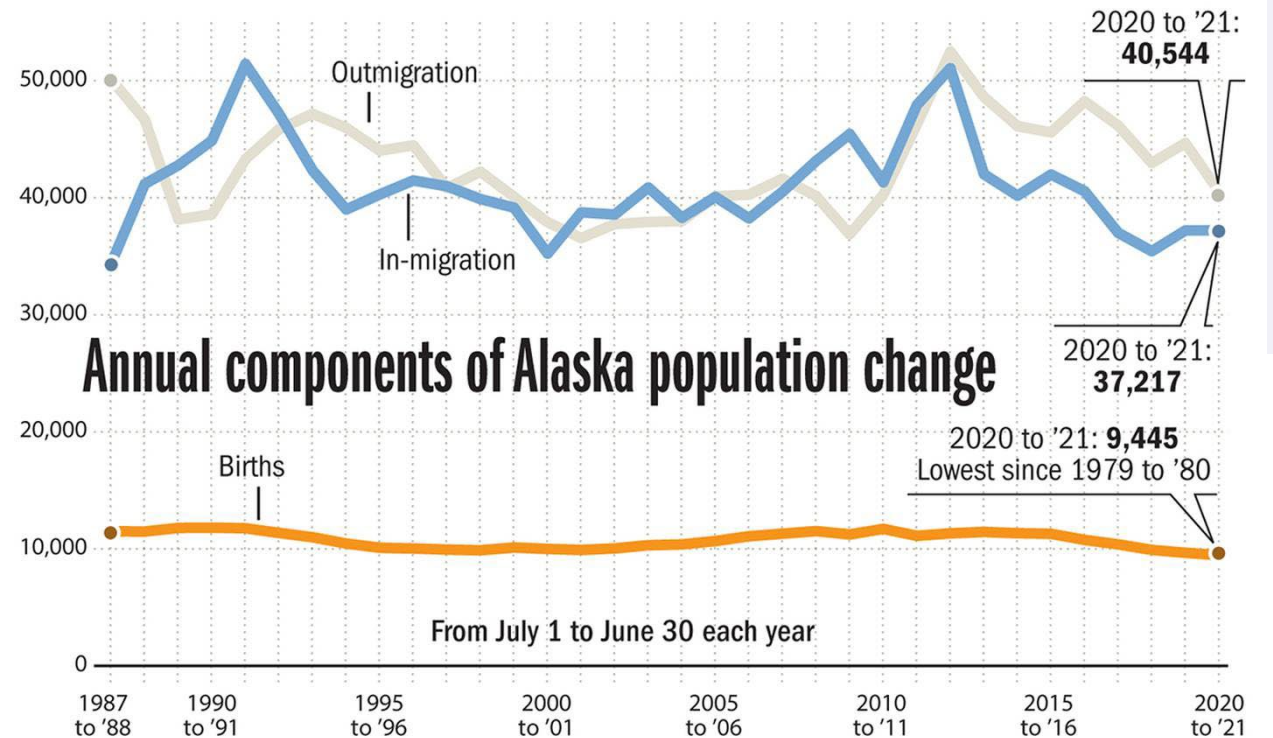
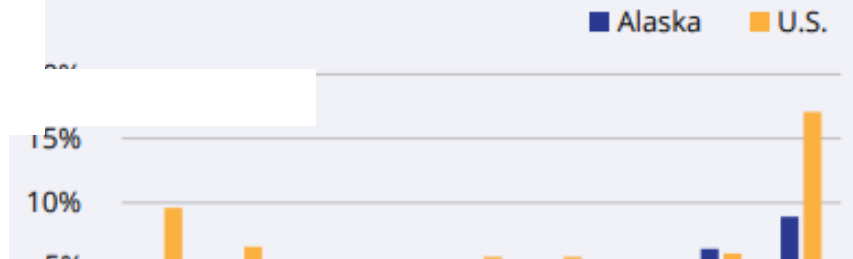
Projects Affected by Supply Chain Issues

Project Breakdown by Percentage of 'Mentions'



Sources: Capital Plans from over 20,000 Municipalities and 3,000 Counties. Analysis results are generated from a search of over 1.6B documents in the Citylitics Data Warehouse with results isolated for cities with an existing groundwater source.

Average sales price changes for single-family homes, 2013-2022



Source: Alaska Department of Labor and Workforce Development, Research and Analysis Section

PERS

- Remove high interest rate on non-payment
- Evaluate and payoff arrearages
- Evaluate and remove salary floor
- Increase State contributions to reduce non-State employer rate
- Evaluate opportunity for State to take over liability for employers who try to leave system

Projected FY24 DB Payroll
 Projected FY24 DCR Payroll
 Projected FY24 Total Payroll

Employer Contributions

DB Pension Plan

- 1. Normal Cost
- 2. Past Service Cost
- 3. Total: (1) + (2)

DB Healthcare Plan

- 4. Normal Cost
- 5. Past Service Cost
- 6. Total: (4) + (5)

- 7. DCR Plan
- 8. Total: (3) + (6) + (7)

Additional State Contributions to DB

- 9. DB Pension Plan
- 10. DB Healthcare Plan
- 11. Total: (9) + (10)

Total DB

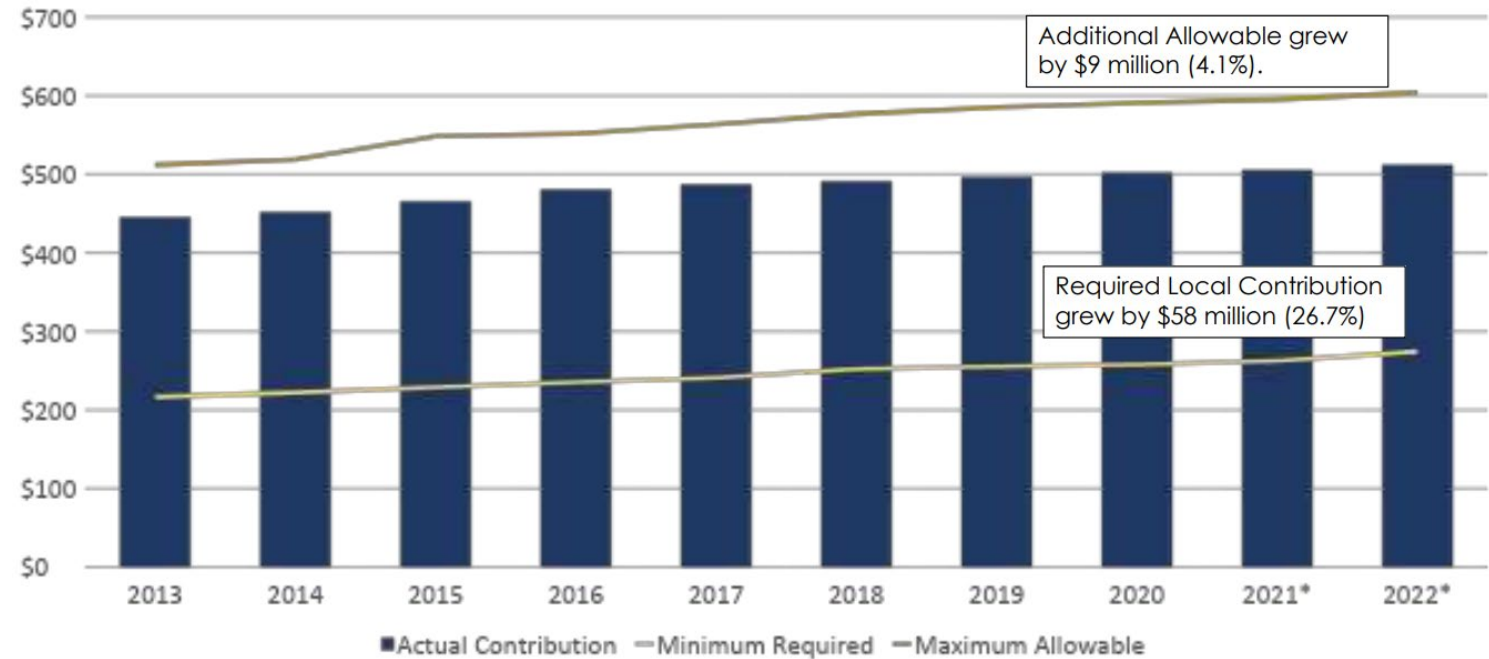
- 12. DB Pension Plan: (3) + (9)
- 13. DB Healthcare Plan: (6) + (10)
- 14. Total: (12) + (13)

Total DB and DCR: (7) + (14)

PERS					
Non-State Employers		State as an Employer		All Employers	
	\$ 357,303,000		\$ 354,314,000		\$ 711,617,000
	866,626,000		859,376,000		1,726,002,000
	<u>\$ 1,223,929,000</u>		<u>\$ 1,213,690,000</u>		<u>\$ 2,437,619,000</u>
Percent of Total Payroll	Estimated Dollar Amount	Percent of Total Payroll	Estimated Dollar Amount	Percent of Total Payroll	Estimated Dollar Amount
Employer Contributions					
DB Pension Plan					
	2.14%		2.14%		
1. Normal Cost	13.23%	1.14%	1.14%	1.14%	
2. Past Service Cost	15.37%	16.33%	16.33%	16.33%	
3. Total: (1) + (2)	\$ 188,118,000	18.47%	\$ 224,169,000	18.47%	\$ 412,287,000
DB Healthcare Plan					
4. Normal Cost	0.00%	0.00%	0.00%	0.00%	
5. Past Service Cost	0.00%	0.00%	0.00%	0.00%	
6. Total: (4) + (5)	0	0.00%	0	0.00%	0
7. DCR Plan	6.63%	6.63%	80,468,000	6.63%	80,468,000
8. Total: (3) + (6) + (7)	\$ 269,264,000	25.10%	\$ 304,637,000	25.10%	\$ 573,901,000
Additional State Contributions to DB					
9. DB Pension Plan	3.10%	0.00%	0	0.00%	0
10. DB Healthcare Plan	0.00%	0.00%	0	0.00%	0
11. Total: (9) + (10)	\$ 37,942,000	0.00%	0	0.00%	0
Total DB					
12. DB Pension Plan: (3) + (9)	18.47%	18.47%	\$ 224,169,000	18.47%	\$ 436,456,000
13. DB Healthcare Plan: (6) + (10)	0.00%	0.00%	0	0.00%	0
14. Total: (12) + (13)	\$ 226,060,000	18.47%	\$ 224,169,000	18.47%	\$ 450,229,000
Total DB and DCR: (7) + (14)	25.10%	25.10%	\$ 304,637,000	25.10%	\$ 754,866,000

Education

- Increase the BSA and adjust for inflation
- Evaluate statewide local contribution
- Replace school bond debt reimbursement program
- Implement base allocation for school construction and major maintenance
- Support ability for districts to consolidate schools without penalty



Economic Development

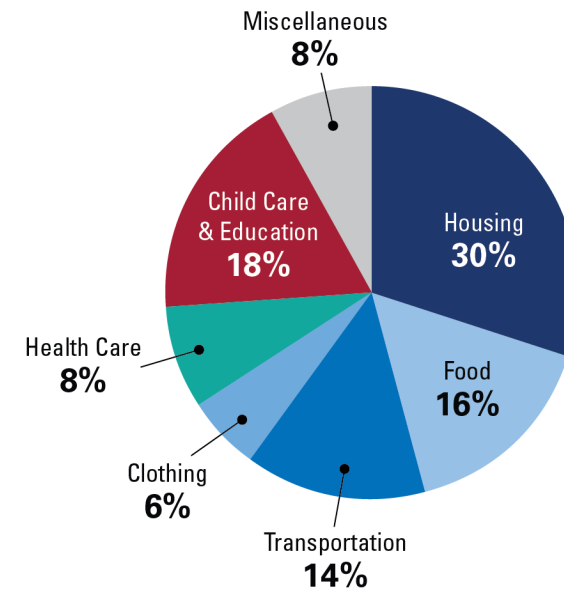
Housing

- AML conducting statewide review of municipal code, fees, and processes to identify efficiencies
- Ensure State investment into access and utilities on developable State lands
- Review of intergovernmental regulatory alignment

Child Care

- Evaluate public sector role in managing assets or employing workforce, thereby extending benefits and cost consolidation
- Ensure effective State-level distribution of resources
- Review of intergovernmental regulatory alignment

SPENDING BREAKDOWN FOR U.S. PARENTS

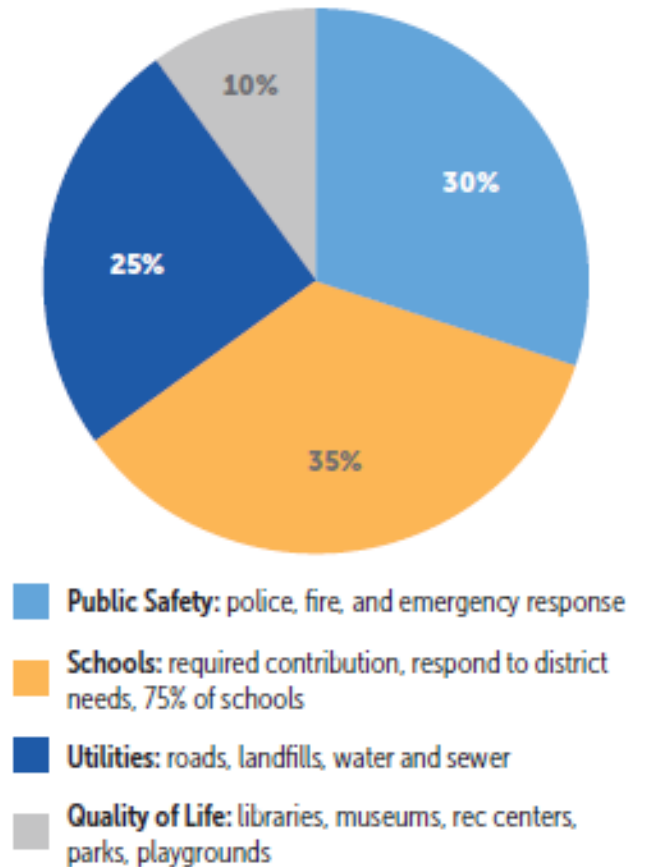


Source: Expenditures on Children by Families, 2013. USDA, Center for Nutrition Policy and Promotion. (Misc. Pub. No. 1528-2013). August 2014

Transportation

1. Budget estimates higher than local planning
2. Transfer of ownership and maintenance
3. Contingency amounts required at the beginning of design and the construction
4. Municipal Harbor Facility Matching Grants
5. Amend statute to encourage RTPOs

Local government spending falls into a few categories:



Energy

1. Renewable Energy Fund

- Ensure adequately funded for community-level projects

2. PCE uses

- Reimburse municipal investments that bring down cost below PCE subsidy threshold

3. Bulk Fuel Loan

- Increasing cap and lowering rates

4. Grid Resilience

- State funding from IJA to support local utilities

Communities with Bulk Fuel Loans 2021



QUICK FACTS

Over 100 operational REF projects

REF Legislative Appropriations to Date: \$299 million

Projects Currently in Development: 44

Matching Funds: \$229 million

Fiscal Policy

1. Mandatory Exemptions

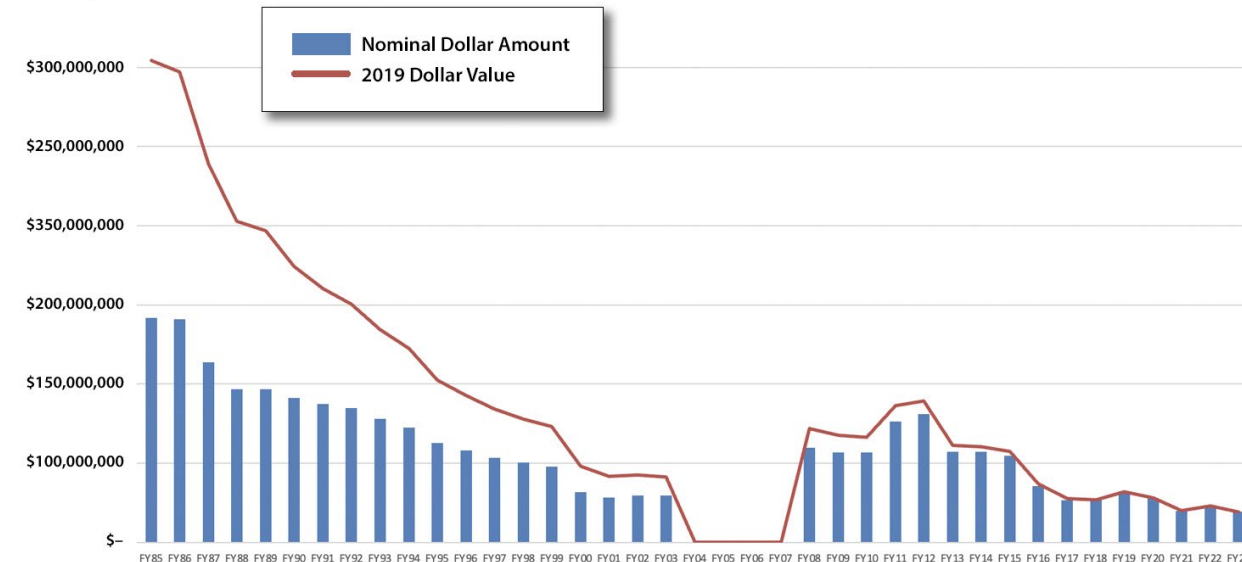
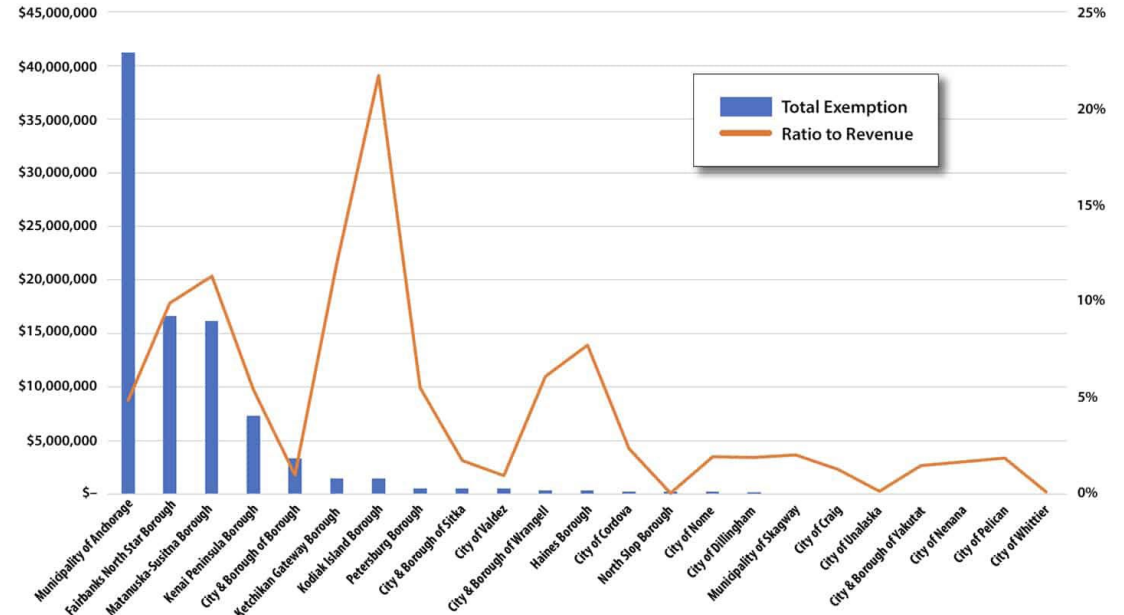
- Reimbursement according to statute

2. Presumption Trust

- Unfunded mandate of State-level presumptions that apply mainly to local government workers compensation; provide State reimbursement fund

3. Ensure Sustainability of Community Assistance

- \$30 million shortfall for recapitalization minimum
- Allow Fund to accrue return on investments
- Provide for non-federal match access beyond formula



Public Health

Opioid Settlement

- Ensure ability to make both short-term investments, while maintaining sustainability of settlement funding
- Encourage multi-jurisdictional investments
- Envision infrastructure development as needed for support system

Public Health Dashboard

- Ensure continued use and maintenance of public health data for effective local decision-making

Increase capacity of local government role in public health, through health assessments and grant funding

links to state's opioid page (if any)	Opioid Settlement Spending Plans (contracts, legislation)	% allocated to...				Notes Re: Control, Additional Resources, News
		STATE	FUND	LOCALITIES	MISC.	
Alabama*	ORIGINAL NON-PARTICIPANT — but see 4/19/2022 AG press (describing state-local allocations for various settlements), 2021 Alabama Opioid Overdose and Addiction Council Annual Report , Executive Order No. 708 ("Establishing the Alabama Opioid Overdose and Addiction Council")	50*		50		"deposited directly into the State's General Fund," with the legislature to appropriate using a needs assessment from the Alabama Opioid Overdose and Addiction Council " (4/19/2022 AG press) See also: 12/14/2021 Special Master Report with city-by-city payout: "Allocation unclear for portions of \$276 million received by Alabama in opioid lawsuit" (10/30/2022)
Alaska*	Admin. Or. No. 324 (Governor's Advisory Council on Opioid Remediation) + Council's "Recommendations for the Use of Janssen/Johnson & Johnson (J&J) and Distributors National Opioid Settlement Funds" See also: AG's 12/19/2022 press ("Alaska Agrees to \$21.5 Million in Opioid Settlements with Walmart, Teva Pharmaceuticals and Allergan; Considering \$21 Million in Settlements with CVS and Walgreens"), 3/1/2022 AG press	85*		15		"fifteen percent (15%) to the State Fund . . . will be directed into the Abatement Accounts Fund" (SACOR 2022) + Advisory Council — "made up of nine voting members and four non-voting members from the Alaska State Legislature" — will advise on spend (Council "incorporated public comments this fall and finalized the Governor's . . . report that provides a framework for allocation of settlement funds") See also: "How should Alaska use \$58.5 million in opioid settlement funds? The state's seeking suggestions" (public comment expired 9/30) , "OPINION: Alaska has plenty of work ahead to manage the opioid crisis" (a truly excellent piece written by the executive director of the Alaska Municipal League)
Arizona	One Arizona Distribution of Opioid Settlement Funds Agreement ; see also: AG's 9/15/2022 press ("General Brnovich Announces Grants to 11 Organizations to Combat the Opioid Crisis")	44**		56*		"Localities" share to be distributed to "each Region or Multicounty Region" (MOU C.3); **State to "endeavor" to spend 30% of its share on prioritizing initiatives in MOU C.8, including "Department of Corrections and related prison and jail opioid uses" and "opioid interdiction and abatement on Arizona's southern border" See also: AG's Procurement page , which hosts requests for grant proposal applications ("AZAG Settlement Grants"), AG's 10/13/2022 press re: 11/28/2022 grant application deadline
Arkansas	Arkansas Opioids MOU + Cities Distribution Agreement + Counties Distribution Agreement + order establishing the Arkansas Qualified Settlement Fund (QSF) See also: Assoc. of Arkansas Counties' and Arkansas Municipal League's "Joint Statement on Formation of Arkansas Opioid Recovery Partnership and Hiring of State Drug Director Kirk Lane"	33.3		66.6*		"1/3 each to state, cities, counties See also: Arkansas Opioid Recovery Partnership (between the Arkansas Municipal League and Association of Arkansas Counties), AORP's Funded Projects Table (very cool), Arkansas Opioid Recovery Partnership Announces Funding Opportunities for Abatement Programs ," Arkansas Attorney General directs \$140 million in opioid settlement funds to general revenue fund " (12/15/2022), and the Arkansas Opioid Response Dashboard (gated as of 1/23/2023. .)

LOCAL GOVERNMENT PRIORITIES

Title 29

1. Confidential disclosure of real estate transactions statewide
2. Removing audit requirement from Community Assistance
3. Amend AS 29.45.500 to reduce interest rates on overpayment of taxes
4. Reducing burden of commercial public records requests
5. Making flexible the number of required city council officials
6. Supporting authority to regulate activities that affect public safety
7. Accelerating transfer of State lands to municipal governments
8. Improve Best Practices direct support to communities
9. Local Boundary Commission oversight

Operations and Maintenance Best Practices Dashboard

Score Boxes = Spring 2022 (average of communities in current map extent)

"Welcome! This dashboard is a joint DCCED/DEC product intended to illustrate current capacity indicators in the 196 communities eligible for Village water funding that choose to participate in Operations and Maintenance Best Practices. The Operations and Maintenance Best Practices criteria were developed by the Alaska Division of Environmental Conservation (DEC) in collaboration with DCCED's Rural Utility Business Advisor (RUBA) and the

The indicators below show the best practices score per category for the most recent scoring period (updated in the Spring and Fall of each year). They display the average score for all communities visible in the map extents. Selecting a community from the list will show the most recent best practices scores for that community.

Red indicators have zero points for that category, highlighting greatest potential improvement.
Green indicators have maximum points for that category.

Operator	Preventative	Compliance	Utility Train
57.07 100 possible Last update: 43 seconds ago	5.58 10 possible Last update: 43 seconds ago	18.28 25 possible Last update: 43 seconds ago	4.22 10 possible Last update: 43 seconds ago
Meetings 2.39 5 possible Last update: 43 seconds ago	Budget 7.09 15 possible Last update: 43 seconds ago	Revenue 9.24 20 possible Last update: 43 seconds ago	Worker Comp 4.12 5 possible Last update: 43 seconds ago
Payroll 2.55 5 possible Last update: 43 seconds ago			

Total Best Practices Score Timeline (average of communities visible in map extents)

Selecting a community from the list will show the historic best practices scores for that community.



Public Safety

Police chiefs launch project to create policy manual for all law agencies in Alaska

Kris Capps Jan 24, 2023

1. Community Jails
 - Local governments providing detainee facilities for State
2. Village Police Officers
 - Basic levels of training, heavy responsibilities, little funding
3. Police Standards
 - Working with AACOP on a grant request to help fund statewide standards model
4. Local Emergency Planning Committees
 - Discontinued State support but still a helpful way to ensure communities are prepared
5. Capital Needs
 - Facilities and equipment needs for effective response



STRATEGIC
INFRASTRUCTURE
DEVELOPMENT

AML and Alaska DOT&PF



FOR IMMEDIATE RELEASE: June 13, 2022

Press Release: 22-0025


Contact: Shannon McCarthy, (907) 269-0448, shannon.mccarthy@alaska.gov

AML & DOT&PF Partner to Capture Transportation Funding for Alaska *National infrastructure law provides transportation grant opportunities for local & tribal governments.*

(ANCHORAGE, Alaska) –Alaska’s local and tribal governments have two powerful allies working together to help them capture federal transportation grant funding for their local marine facilities, roadways bridges, and trails. The Alaska Municipal League (AML) and Alaska Department of Transportation & Public Facilities (DOT&PF) have signed a Memorandum of Agreement (MOA) to partner and share resources to support local and tribal governments in order to capture competitive, discretionary grants for local transportation projects.

The Infrastructure Investment and Jobs Act (also known as the “Bipartisan Infrastructure Law”), passed in November 2021, providing a once in a generation investment in the nation’s transportation infrastructure, including airports, highways, ports, bridges, and trails.

AML and Alaska DOT&PF



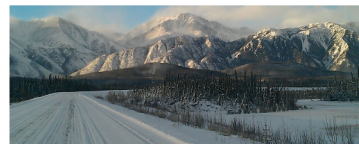
Alaska Transportation Funding Opportunity Hub

[Home](#)
[State Programs Overview](#)
[Federal Grants Overview](#)
[Projects](#)
[Contacts and FAQs](#)



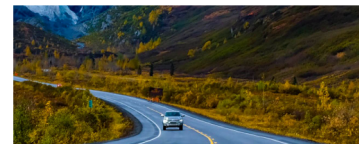
Submit a Project

Alaska DOT&PF and Alaska Municipal League (AML) have partnered to help you pair your project with a funding program that will best suit your project goals. Once you submit a project intake survey, the information you provide will be used to match the project with opportunities your project is likely to be competitive for. If a match can be found, Alaska DOT&PF or AML will reach out to you to gather more information and help you submit a successful application. The survey is comprehensive in order to help identify the best opportunity match, any information you don't know can be determined at a later date.



Discover State Programs

The Alaska Transportation Funding Opportunity Hub currently provides information and support for the TAP and CTP programs. From the program page you can view the program application schedule, review evaluation criteria and submit a notice of intent to apply. Not sure which to apply for, or want your project to be considered for all available opportunities? Submit a project intake survey and it will also act as the Notice of Intent to Apply (NOIA) for state programs. Alaska DOT&PF will add programs as they become available. Be sure and check back regularly.

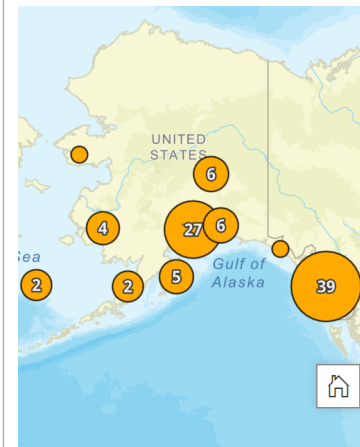


Discover Federal Opportunities

Review the list of currently available federal NOFOs. From the Federal Grants page you can view the grant application schedule, review evaluation criteria and submit a project intake survey. AML and DOT&PF will help pair your project with the best federal opportunities. Not sure if you should apply for state programs or federal grants? Submit a project intake survey and it will be considered for both.



Project Map



Infrastructure Collaboration



Community Planning and Infrastructure Management

Community Planning and Prioritization

Grant Development and Response

Grant Award, Partnerships, and Match

Procurement and Workforce

Project Management

Grant Reporting and Outcomes

Maintenance and Operations

Asset Management and Sustainability

THANK YOU

Strengthening Local Governments

Questions: Nils Andreassen, Executive Director * nils@akml.org