



Kodak

Truper
3210 Scanner
3610 Scanner

User's Guide

OVERVIEW 1-1

INSTALLATION 2-1

USING THE SCANNER 3-1

ADVANCED FEATURES 4-1

USER UTILITY 5-1

MAINTENANCE 6-1

TROUBLESHOOTING 7-1

APPENDICIES A-E

1 Overview

Contents

Optional accessories.....	1-2
What's in the box	1-2
Scanner components	1-3
Front view: <i>Trüper</i> 3610 Scanner	1-3
Front view: <i>Trüper</i> 3210 Scanner	1-4
Rear view: <i>Trüper</i> 3610 Scanner.....	1-5
Rear view: <i>Trüper</i> 3210 Scanner.....	1-6
Inside view.....	1-7

With *Kodak Trüper* 3210 and 3610 Scanners, the low-volume production scanner segment just got a little faster. The *Trüper* Scanners' unique combination of image quality, duty cycle and speed make them an attractive option for service bureau overflow, busy office environments and businesses with exception document scanning needs. You can meet all of your diverse scanning needs whether you are using the *Kodak Trüper* 3210 Scanner (flatbed with rotary) or the *Kodak Trüper* 3610 Scanner (rotary only).



Kodak Trüper 3610 Scanner



Kodak Trüper 3210 Scanner

- *Kodak Trüper* 3210 Scanner — duplex scanner that scans 95 pages per minute in color, grayscale and black and white; including a built-in flatbed for scanning exception documents.
- *Kodak Trüper* 3610 Scanner — a rotary-only duplex scanner that scans 95 pages per minute in color, grayscale and black and white.

NOTE: The procedures in this manual are the same for both scanners unless otherwise noted. The illustrations shown in this manual are for the *Kodak Trüper* 3610 Scanner. If the location of any parts, buttons, etc. are in a different position for the *Kodak Trüper* 3210 Scanner, both models will be shown.

Optional accessories

Long Document Paper Weight — designed to aid in scanning extremely long documents. The paper weight improves long document handling by applying a small and uniform amount of pressure, for long documents to run smoothly through the scanner transport. For use with both the *Kodak Trüper* 3210 or 3610 Scanner. CAT No. 109 2436

Imprinter — front page (pre-scan) imprinter prints the user-specified alphanumeric string on the front side of documents *before* they are scanned. CAT No. 896 1955

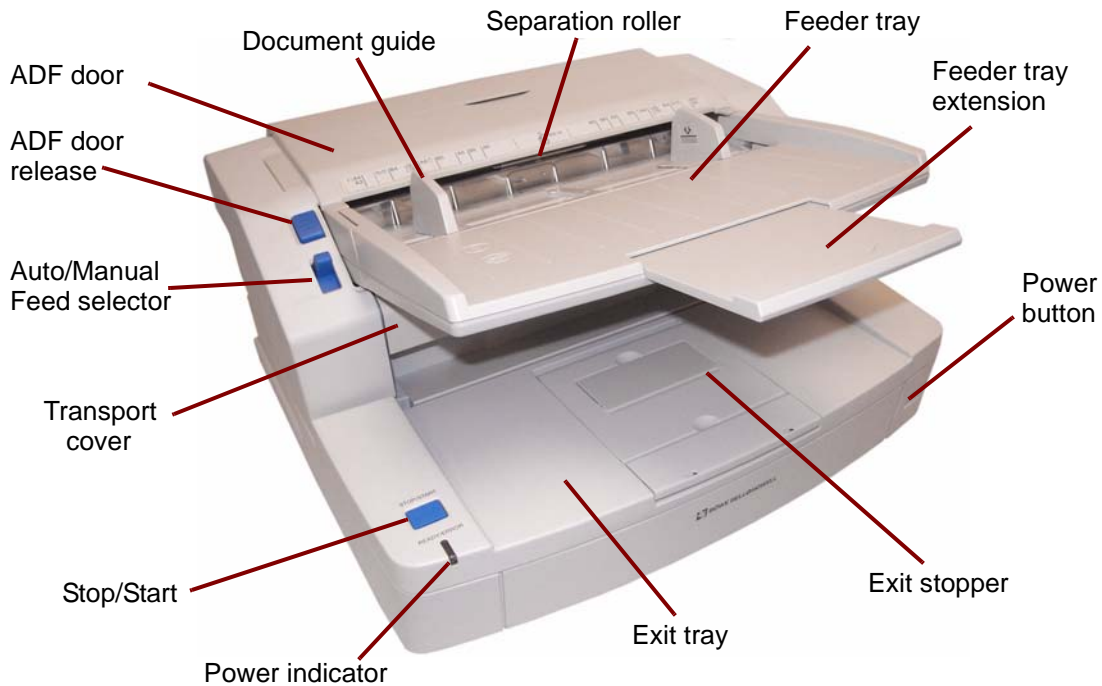
Memory Upgrade Kit — some scanning work may require additional memory depending on variables such as the size of the documents you are scanning and the desired image resolution. For example, two-sided scanning of larger document sizes such as A3, or color scanning at a resolution of 600 dpi may require additional memory. If you need additional memory, the Memory Upgrade Kit is available. CAT No. 132 6313

What's in the box

- *Kodak Trüper* 3210 or 3610 Scanner
- Power cord
- USB cable
- Wire Frame (3610 Scanner only)
- Shading Sheet
- Starter Cleaning Kit
- *Kodak Trüper* Quick Installation Guide
- Installation Resource CD which includes the following:
 - User Utility
 - ISIS/TWAIN Driver
 - VRS Software
 - *Kodak Trüper* User's Guide (multiple languages)
 - VRS User Manual and Release Notes

Scanner components

Front view — Kodak Trüper 3610 Scanner



Power indicator — lights when the power to the scanner is on.

Stop/Start button — starts or stops scanning.

Transport cover — provides access to internal components.

Auto/Manual feed selector — set this selector to **AUTO** if you are feeding a stack of documents. If you are feeding documents one at a time, set the selector to **MANUAL**.

ADF door release — push this button to open the ADF door.

ADF door — provides access to the Automatic Document Feeder.

Document guides — slide the document guides in or out to accommodate the size of the documents you are scanning.

Separation roller — allows the paper feed roller to feed a single document into the scanner.

Feeder tray — holds documents in place for automatic or manual scanning. The documents should be placed face-up to ensure they are scanned in the correct order.

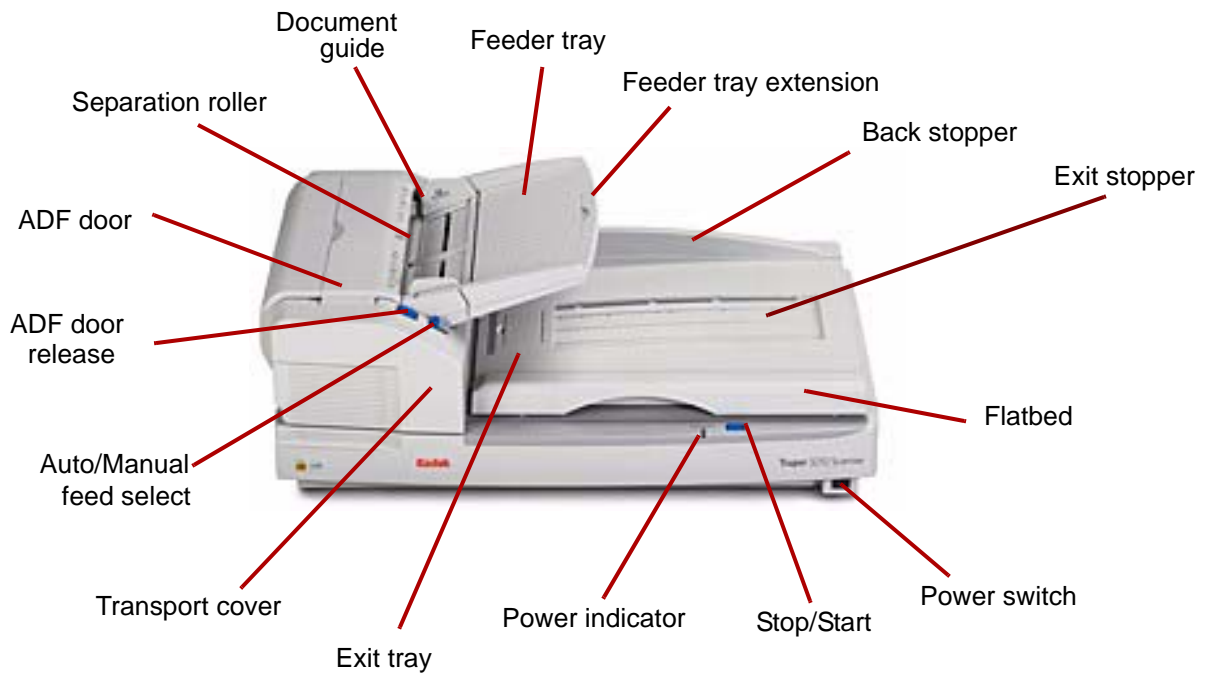
Feeder tray extension — pull this extension out to accommodate document sizes longer than 11 inches (279.4 mm).

Power button — press this button to turn the scanner on or off.

Exit stopper — located on the exit tray, the exit stopper can be positioned to accommodate the length of the documents being fed through the scanner.

Exit tray — collects the documents after scanning. The scanned documents will be deposited face-down in the exit tray.

Front view — Kodak Trüper 3210 Scanner



Exit tray — collects the documents after scanning. The scanned documents will be deposited face-down in the exit tray.

Transport cover — provides access to internal components.

Auto/Manual feed selector — set this selector to **AUTO** if you are feeding a stack of documents. If you are feeding documents one at a time, set the selector to **MANUAL**.

ADF door release — push this button to open the ADF door.

ADF door — provides access to the internal components of the scanner.

Separation roller — allows the paper feed roller to feed a single document into the scanner.

Document guides — slide the document guides in or out to accommodate the size of the documents you are scanning.

Feeder tray — holds documents in place for automatic or manual scanning. The documents should be placed face-up to ensure they are scanned in the correct order.

Feeder tray extension — pull this extension out to accommodate document sizes longer than 11 inches (279.4 mm).

Back stopper — prevents documents from falling off of the exit tray if you lift the flatbed cover after the documents have exited from the scanner.

Exit stopper — located on the exit tray, the exit stopper can be folded down or positioned to accommodate the length of the documents being fed through the scanner (not shown in this illustration).

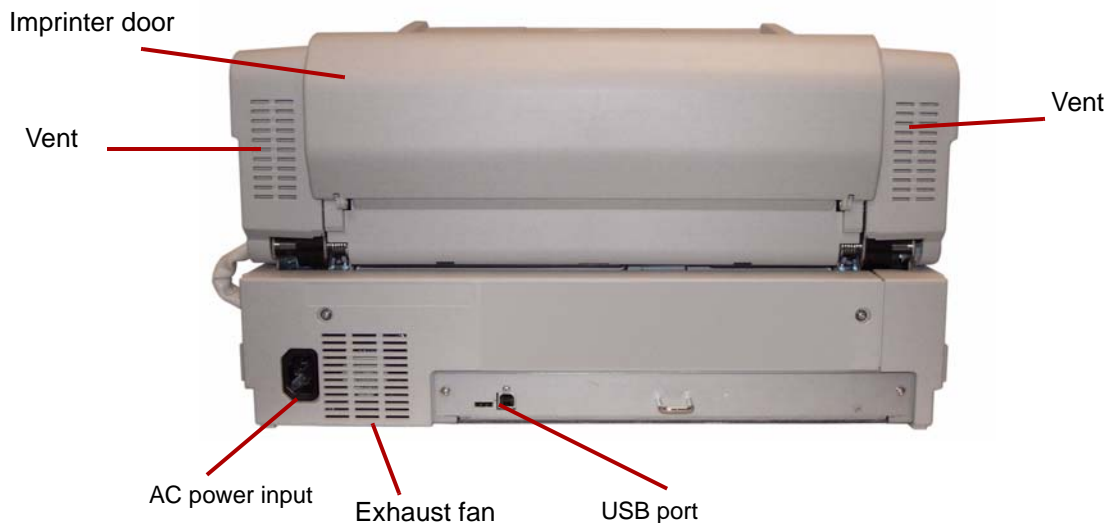
Flatbed — for scanning bound books, documents that are badly torn or other exception documents.

Power switch — press this button to turn the scanner on or off.

Stop/Start button — starts or stops scanning.

Power indicator — indicates scanner status. See the section entitled, “Scanner LED status” in Chapter 7 for a description of the scanner states.

Rear view — Kodak Trüper 3610 Scanner



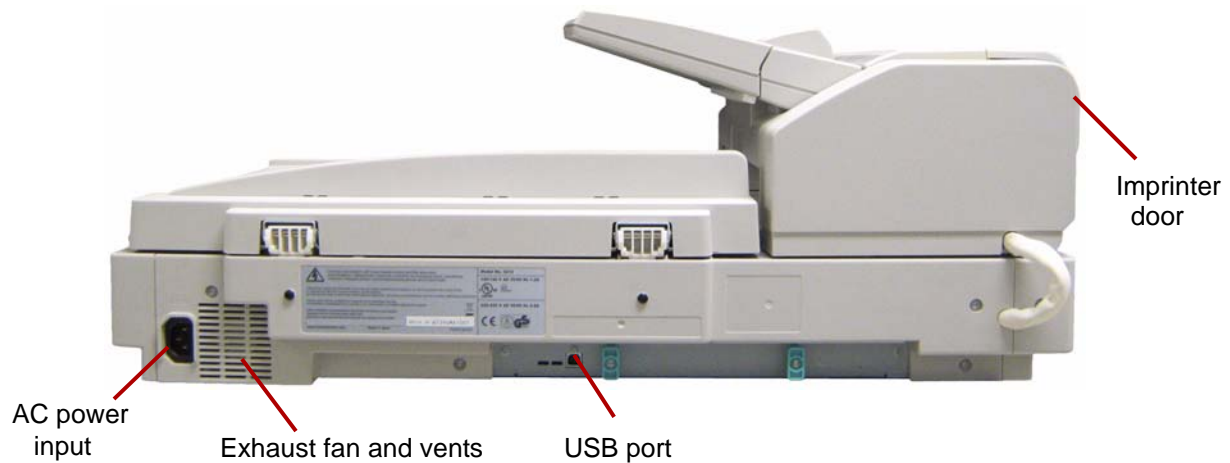
USB port — connects the USB 2.0 cable to the scanner.

Exhaust fan and vents — clean these areas once a month for best scanner performance.

AC power input — connects the power cord to the scanner.

Imprinter door — allows access to the optional imprinter.

Rear view — Kodak Trüper 3210 Scanner



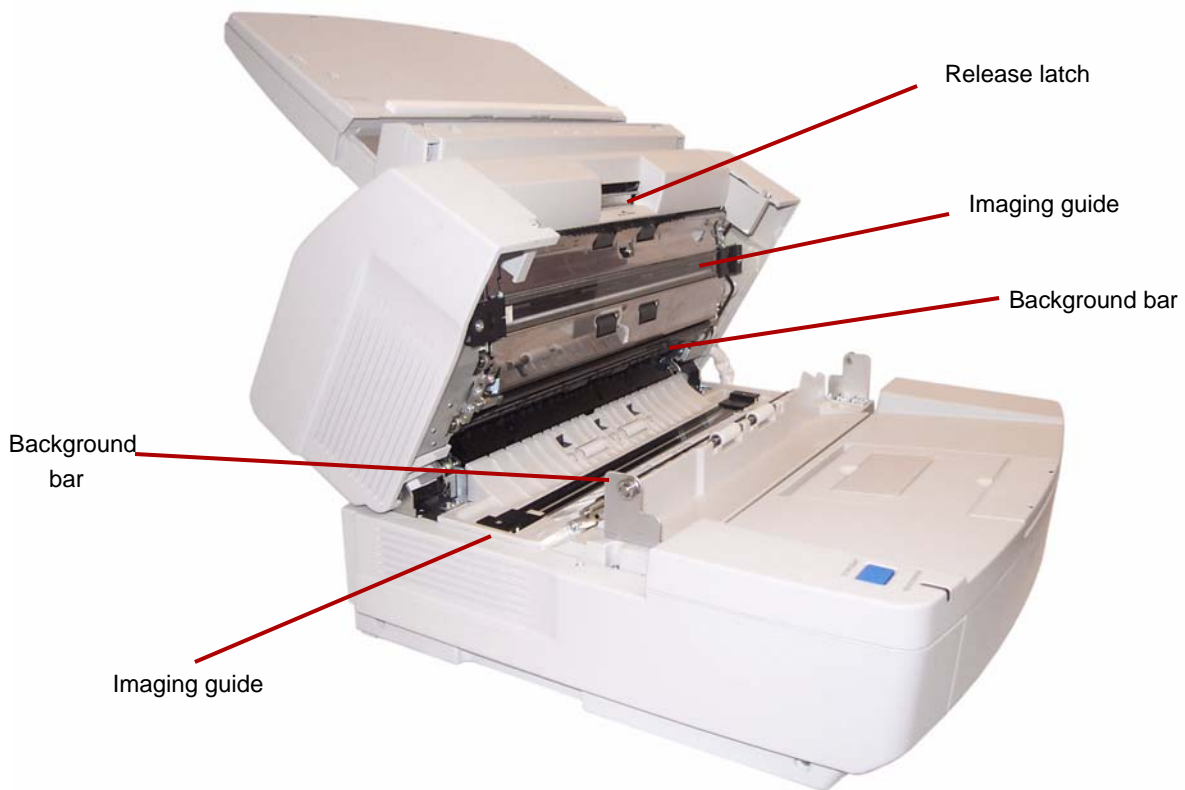
USB port — connects the USB 2.0 cable to the scanner.

Exhaust fan and vents — clean these areas once a month for best scanner performance.

AC power input — connects the power cord to the scanner.

Imprinter door — allows access to the optional imprinter.

Inside view — the internal components are the same for both scanner models.



Imaging guides — the glass through which the scanner camera sees the document. Light from the lamps passes through this glass to illuminate the document.

Background bar — the upper and lower bar can be easily rotated to change the background color of the scanned document. Black or white backgrounds may be selected.

Release latch — press this release lever up to release and open the transport cover.

2 Installation

Contents

Installation checklist	2-1
Attaching the feeder tray	2-2
Making connections	2-2
Installing the Windows scanner driver	2-3
Installing the software	2-4
Step 1: User utility.....	2-4
Step 2: ISIS/TWAIN Driver	2-5
Step 3: VirtualReScan	2-5
Step 4: Applications	2-5
User Utilities	2-6
Viewing manuals	2-6

Installation checklist

- After the scanner has been unpacked, it is recommended that you keep the original carton and all packing materials in case you need them later. See *Appendix E, Repacking the Scanner* for more information.
- Verify the computer system requirements. Refer to *Appendix A, Specifications*.
- Attach the feeder tray to the scanner. See the section entitled, "Attaching the feeder tray" later in this chapter.
- Connect the scanner. See the section entitled, "Making connections" later in this chapter.
- Install the software. See the section entitled, "Installing the software" later in this chapter.

You are now ready to scan. Refer to the instructions for your scanning or document management software application.

Attaching the feeder tray

1. Install the left side of the feeder tray by inserting the pin located at the left side of the feeder into the hole.



2. Install the right side of the feeder tray by inserting the pin located at the right side of the feeder into the hole. A small amount of pressure will be required to align the pin with the hole.

Making connections

1. Turn the host PC off.
2. Plug the power cord into the AC power input on the back of the scanner and connect the other end to a power outlet.
3. Connect the USB cable to an available USB 2.0 port on the host PC and connect the other end to the USB port on the scanner.



NOTE: Do not connect the scanner to a USB hub.

Installing the Windows scanner driver

1. Press the Power button to turn the scanner on.



The power indicator will flash orange then display a steady green when the scanner is ready.

2. Turn on the host PC.

For Windows 7 or Windows 8: You must be logged in with Administrator privileges.

1. Open Device Manager. Under **Other**, select **Kodak 3210/3610 Scanner**, right-mouse click on your scanner model and update your driver software.
2. Select **Browse my computer for device software** and browse to the folder: **D:\minidriver**, where “D” is the letter drive that contains the Installation Resource CD.
3. Accept the prompts to install and restart the host PC.

For Windows 2000, Windows XP, or Windows Vista : You must be logged in with Administrator privileges. Windows will detect the scanner and start the Found New Hardware Wizard.

1. At the Found New Hardware Wizard screen, click **Next**.
2. Select **Search for a suitable driver for my device**, then click **Next**.
3. Select **CD-ROM drives**, then click **Next**.
4. Insert the Installation Resource CD into the appropriate drive on the host PC.
5. When Windows finds the device driver, click **Next**.

NOTE: If Windows cannot find the driver files, click the **Browse** button in the Files Needed dialog box. Browse to the folder **D:\minidriver**, where “D” is the letter for the drive that contains the Installation Resource CD. If there is no request for files, continue with the next step.

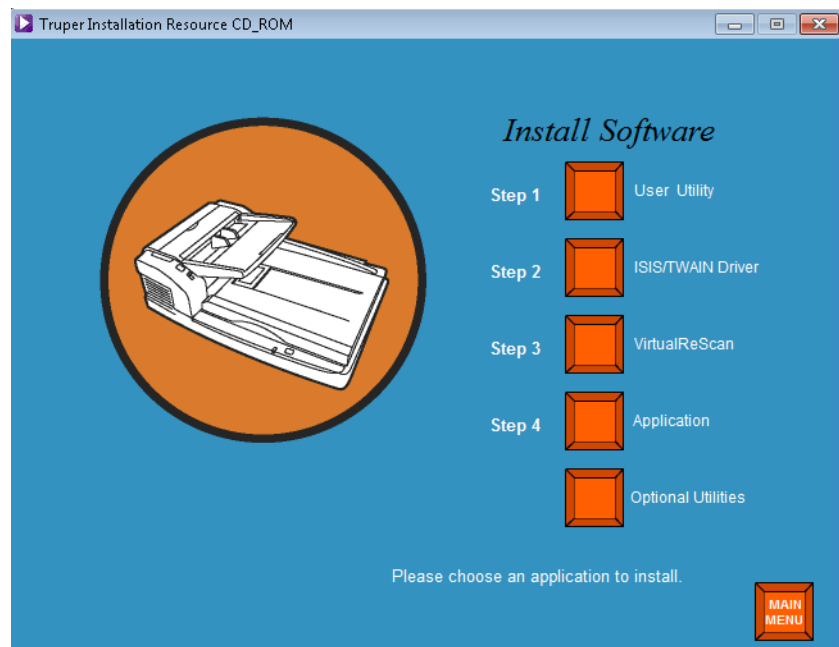
If the Windows XP compatibility message is displayed, click **Continue Anyway**.

6. The Found New Hardware Wizard will complete the driver installation. Click **Finish**.
7. Restart the host PC.

Installing the software

1. Insert the Installation Resource CD in the CD-ROM drive of the host PC. The installation will start automatically.
NOTE: If the installation does not start automatically, select **Start>Run** and type **D:** in the Run dialog box where “D” is the letter of drive that contains the Installation Resource CD. Locate the **setup.exe** file and double-click on it to open the Installation menu.
2. Select the desired language from the Language dialog box and click **OK**.
3. Click the *Truper* Scanner image that you are installing software for from the Main menu.
4. Click **Install Software**.

After these steps have been completed, continue with the installation of the following: **User Utility, ISIS/TWAIN Driver, VirtualReScan, Application and Optional Utilities.**



Step 1: User Utility

1. Click **Step 1 User Utility**.
2. Read the license agreement and click **Yes** to accept the agreement.
3. Click **Next** to select the default destination folder for the program files (recommended). To install the files in a different folder, click **Browse** and select a different destination, then click **OK** in the Choose Folder window.
4. Click **Next** to select the default folder for program icons. The User Utility will be installed.
5. When complete, click **Finish**. The User Utility on-line help files will be installed.
6. Click **Next** to continue.
7. When the on-line help files have been installed, click **Finish**.

Step 2: ISIS/TWAIN Driver

1. Click **Step 2 ISIS/TWAIN Driver**.
2. Read the license agreement and click **Yes** to accept the agreement.
3. Close all other Windows programs and click **Next**.
4. When the installation is complete, select **Yes, I want to restart my computer now** and click **Finish**.

Step 3: VirtualReScan

1. Click **Step 3 VirtualReScan**.

NOTE: It will take a few moments for the installation to begin. As installation is progressing, messages will be displayed (i.e., **VRS is installing...Please wait! This message will disappear when VRS has finished**).
2. When the installation is complete, you will be prompted to restart the PC. Click **Yes** on the dialog box.

Step 4: Application

1. Click **Step 4 Application** to install your scanning application.

Driver Selection: Scanning Applications with VRS connectivity

VirtualReScan is compatible with most scanning applications. When starting your scanning application, you may be requested to select a scanner or a scanner source. Depending on your application, select one of the following:

- For ImageControls applications, set Scanner Source to: **Trüper 3210/3610 with SVRS**.
- For ISIS applications, set Scanner Selection to: **Kofax VRS Scanner**. This is the certified ISIS driver for this configuration. **DO NOT select Trüper 3210/3610**.
- For TWAIN applications, set Scanner Selection to: **Kofax Software VRS - TWAIN**.

NOTE: Contact your application reseller for more information.

Scanning applications with Direct ISIS connectivity

Occasionally, an ISIS application based on PixTools may not support the recommended VRS-based ISIS driver. Check with your application reseller to determine if your scanning application is compatible with VRS or requires the use of a Direct ISIS driver. For Direct ISIS connectivity, select the following driver:

- ISIS Application Scanner Selection: **3210/3610**. This is the certified ISIS driver for direct connectivity.

Scanning applications with TWAIN connectivity

Occasionally, the TWAIN application may not support the recommended VRS-based TWAIN driver. Check with your application reseller to determine if your scanning application is compatible with VRS or requires the use of a Direct TWAIN driver. For Direct TWAIN connectivity, select the following driver:

- TWAIN Application Scanner Selection: **3210/3610**. This is the certified TWAIN driver for direct connectivity.

Optional Utilities

1. Click **Optional Utilities** from the Install Software screen.
2. From the Optional Utilities screen, click **ScanDemo** to install this application.

Viewing manuals

The *Kodak Trüper 3210/3610* User's Guide and VRS manuals are available on the Installation Resource CD.

NOTE: To view the manuals you will need Adobe Acrobat Reader.

1. Insert the Installation Resource CD in the PC.
2. Select the desired language.
3. Click **View Manuals** from the Main menu.
4. Select the manual you want to view.

3 Using the Scanner

Contents

Getting your scanner ready to scan	3-1
Determining your feeding mode.....	3-2
Making scanner adjustments	3-3
Attaching the wire frame	3-4
Changing the background bars.....	3-5
Changing the background flatbed sheet	3-6
Stop/Stop button functionality	3-6
Getting your documents ready to scan	3-8
Scanning documents	3-9
Scanning with the flatbed (3210 Scanner)	3-11

Getting your scanner ready to scan

1. Press the power button to On (I). The power indicator on the front of the scanner will flash orange and then display a steady green. See the section entitled, “Scanner LED status” in Chapter 7 for more information regarding the power indicator.
2. After the power indicator on the scanner is a steady green, turn on your PC.
3. Determine your feeding mode: **Auto** for batch scanning; **Manual** for feeding one document at a time. See the next section, “Determining your feeding mode” for more information.
4. Adjust your side guides, end stop, change the background plates, etc. to accommodate your document scanning needs. See the section entitled, “Making scanner adjustments” later in this chapter for more information.

Determining your feeding mode

The scanner has an Auto/Manual feed selector switch. This switch must be placed in the correct position depending on your scanning needs. You can scan in **Auto** mode or **Manual** mode.



Auto mode — use Auto mode when you are scanning a batch of documents. The feed selector switch must be in the **Up** position. Use **Auto** to lower the feeder tray between each batch and restart scanning immediately. To feed documents in Auto mode:

1. Set the feed selector switch to **Auto**. The feeder will adjust automatically to the automatic feed position.
2. Verify that the document guides are adjusted to fit the size of the documents you are scanning (slightly wider than the size of the documents in the batch).
3. On the PC, click the **Start/Batch** button in the scanning application. Place your documents into the feeder tray. The feeder tray will rise and automatically feed the batch of documents in the feeder tray.

Manual mode — use Manual mode when you want to feed one document at a time or thicker documents. The feed selector switch must be in the **Down** position. Manual mode is not recommended for multiple or batch feeding.



1. Set the feed selector switch to **Manual**. The feeder will adjust automatically to the manual feed position.
2. Verify that the document guides are adjusted to fit the size of the documents you are scanning (slightly wider than the size of the document you are scanning).
3. Insert one document into the feeder tray with the top side facing up.

Making scanner adjustments

Before scanning documents, you may need to adjust your document guides, feeder tray extension and exit stopper to accommodate the size of the documents you are scanning. If necessary, the wire frame is available if you are scanning documents of varying sizes.

- The document guides on the feeder tray can be moved in and out to accommodate the size of the documents you are scanning.
- If you are scanning documents longer than 11 inches (279.4 mm), pull the feeder tray extension out. The feeder tray extension will support documents up to 15 inches (381 mm) long.
- To handle longer paper in the exit tray, extend the exit stopper. Adjust the position of the exit stopper so that it will accommodate the length of the documents. The exit stopper is adjustable to 17 inches (432 mm). When scanning a document longer than 17 inches (432 mm) or A3 size (420 mm), fold down the exit stopper so that the longer paper will fit in the exit tray.



- If you are feeding documents of varying sizes, attach the wire frame to aid in document stacking. See the next section, “Attaching the wire frame” for more information.

Attaching the wire frame

1. Pull the exit door release lever and open the exit door.



2. Attach the wire frame to both of the exit door release sides.



3. Hang the wire frame on the shaft of the exit door release.



4. Slowly pull the wire frame forward until it clicks into place.
5. Gently close the exit door.

Changing the background bars

There are two background bars located inside of the scanner; an upper background bar and a lower background bar. Each bar has a white side and a black side. These bars can be easily changed. The background color is important because it may affect the cropping quality of the scanned image.

Most of the time, you will scan your documents using the black background. The black background can improve imaging of documents with very light contrast data and increase color uniformity.

You should use the white background if you are scanning translucent documents. The white background will reduce black background bleed-through, which produces whiter images.

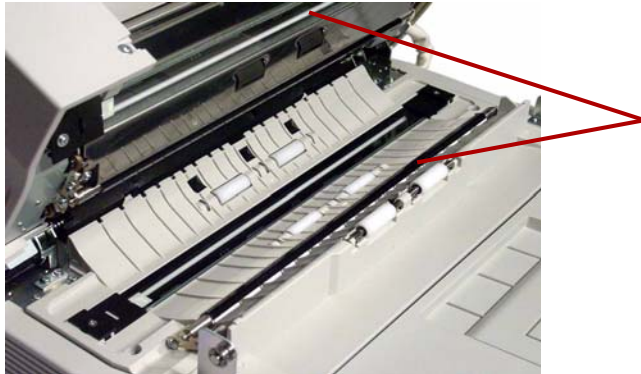
The background color set up in your scanning application, must match the color of the background bars.

To change the background bars:

1. Turn the scanner off and open the exit door.



2. Locate the lower background bar, place your finger on the right end of the bar and push it to the left. Rotate the background bar until the desired color is showing. Release the pressure on the background bar and verify it is locked in place.



3. Locate the upper background bar, place your finger on the left end and push it to the right. Rotate the background bar until the desired color is showing. Release the pressure on the background bar and verify it is locked in place.

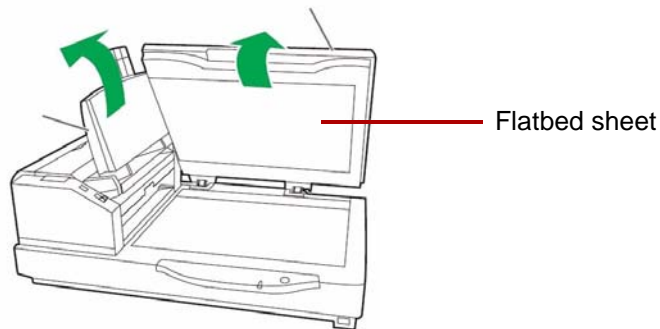
Both background bars should be the same color.

4. Gently close the exit door and turn the scanner on.

Changing the background flatbed sheet — for the 3210 Scanner only

To provide a background color, the flatbed sheet is black on one side and white on the other side. The flatbed sheet color is initially set to black. To change the color of the flatbed sheet, do the following:

1. Turn the scanner off.
2. Raise the feeder tray to the upright position.
3. Open the flatbed cover.



4. Gently pull the magnetized flatbed sheet away from the document cover.
5. Turn the flatbed sheet over so the color you want for the background faces the flatbed glass.
6. Reattach the flatbed sheet to the document cover by positioning the corners of the sheet in the brackets.

Stop/Start button functionality

The Stop/Start button has different functions depending on the mode of operation.

Emergency Stop mode (default) — if the scanner is running and feeding paper, press the blue Stop/Start button to immediately stop the paper in the scanner. This is the default mode of operation.

If a multifeed condition is present, pressing and holding this button until the Ready/Error light flashes alternately between green and orange, the multifeed detection will be disabled for the next sheet fed.

Getting your documents ready to scan

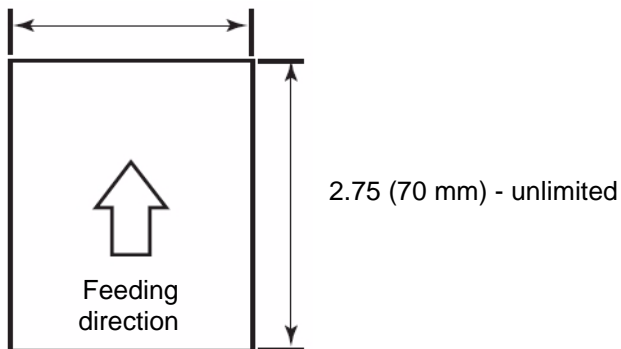
For best results, follow these guidelines for documents that will be scanned using the ADF (Automatic Document Feeder):

- Standard paper size documents feed easily through the scanner. When organizing your documents for scanning, stack the documents so the lead edges are aligned and centered in the feeder tray. This allows the feeder to introduce documents into the scanner one at a time.

Maximum thickness: 2.0 to 5.9 mils (0.05 to 0.15 mm)

Maximum weight: 10.6 to 34 lbs. (40 to 127 g/m²)

- Acceptable document size for the ADF:
1.57 - 11.70 inches (40 - 297 mm)



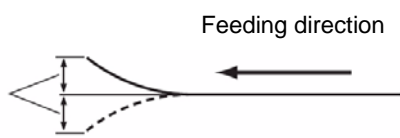
- **Remove all staples and paper clips before scanning.** Staples and paper clips on documents may damage the scanner and documents.
- Glued or curled documents may cause a paper jam or damage in the ADF.
- All inks and correction fluids on the paper must be dry before scanning is started.
- The height of the documents placed in the feeder tray must not exceed the paper limit mark that appears on the right side of the document guide. The following chart indicates the maximum number of sheets that can be loaded on the feeder tray:

Paper weight (lbs)	11	14	17	20	21	24	28	34
Paper weight (g/m²)	40	52	64	75	80	90	104	127
Maximum number of sheets	320	260	200	170	160	140	120	100

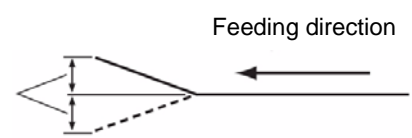
- Sheets that are exceptionally thick or thin should be placed in the ADF manually, one sheet at a time, if you have a 3210 Scanner, you can use the flatbed.

- Curled, wrinkled, or folded documents may not scan properly. Check the allowances for curl and fold in the following diagram:

Curl must be less than 0.20 inches (5 mm)



Fold must be less than 0.20 inches (5 mm)



The following types of documents may cause jams in the ADF or may cause the ADF to feed more than one sheet at a time.

- Overhead projector sheets, plastic films, cloth or metallic sheets
- Paper with irregularities such as tabs, staples, paste and similar items
- Thick or irregular documents such as envelopes or documents that are glued together
- Thermal or heat sensitive paper
- Tracing paper
- Damaged or wrinkled documents
- Photographs
- Coated paper
- Thick plastic cards such as credit cards or identification cards
- Torn sheets and documents with notches, holes, punched or perforated sheets
- Extremely smooth or shiny paper
- Paper that is highly textured
- Paper with carbon sheets
- Carbonless (NCR) paper

Scanning documents

1. Prepare the batch of documents you want to scan by following the guidelines provided in the previous section, “Getting your documents ready to scan”.
2. Place the documents you want to scan in the feeder tray with the side to be scanned facing up. Slowly push the sheets into the scanner transport.

NOTES:

- Do not overfill the feeder tray. The document stack should not exceed the Paper Limit mark on the feeder tray.



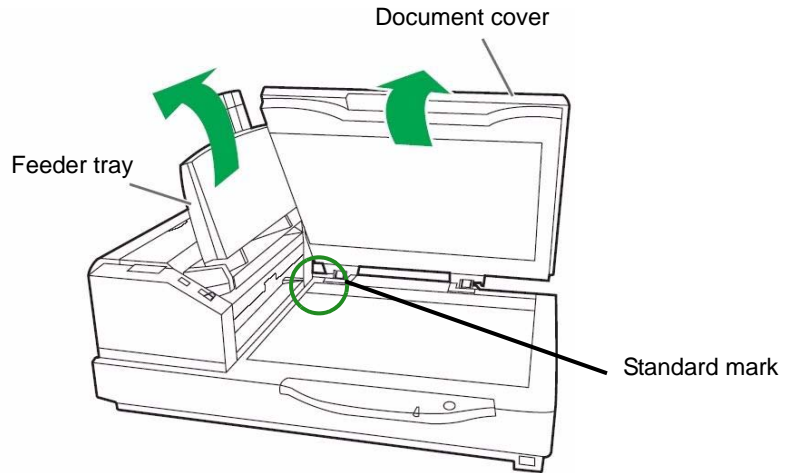
- The guide on the ADF door provides a graphical document sizing scale and a directional “Face Up” icon to aid in document scanning.
 - Use the Wire Frame attachment when scanning several documents of varying sizes.
3. You are now ready to scan. Refer to the instructions for your scanning application or document management software for more information. Scanner settings are available through the Properties window after the scanner has been selected. See Chapter 4, *Advanced Features* for more information.

Scanning with the flatbed (3210 Scanner)

You can use the flatbed on the 3210 Scanner to scan a single sheet, exception documents or documents that you do not want to take apart before scanning (e.g., books, magazines).

NOTE: Do not place floppy disks or any items containing magnetic media on the flatbed.

1. Raise the feeder tray up until the tray clicks into place.
2. Open the document cover.



3. Select **Flatbed Mode** in the scanning application.
4. Place the document face down in the upper left corner of the flatbed glass.
5. Place the shorter edge of the document along the left edge of the flatbed glass. Match the shorter edge with the standard mark.
6. Place the longer edge of the document along the top edge of the flatbed glass. Match the longer edge with the standard mark.

NOTE: If the document is not properly aligned, the document will not scan correctly.

7. Gently close the document cover.

NOTES:

- When scanning thick documents such as a bound book, only the areas that are touching the flatbed glass will be scanned.
- Do not open or press down on the document cover during the scanning process.
- When using the flatbed for a series of documents, keep the feeder tray raised. You only need to raise and lower the document cover when you scan each document.

4 Advanced Features

Contents

Accessing Advanced features.....	4-1
Preset tab	4-4
Layout tab.....	4-5
Paper Handling tab.....	4-7
Image Processing tab.....	4-10
About tab	4-14

This chapter provides information about advanced features that can be used with the *Kodak Truper* 3210 and 3610 Scanners. The controls for operating the Advanced Features are accessible within the VirtualReScan[®] (VRS) Interactive Viewer.

NOTES:

- When VRS is not installed, similar settings can be found in the Direct ISIS and TWAIN settings.
- Some functions shown in Advanced Features are disabled when using VRS.

Accessing Advanced features

To access the VRS Interactive Viewer, VRS Professional software must be loaded on the host PC that the scanner is connected to. VRS Professional will be active when the scanning application being used is launched and a VRS scan source is selected. There are three types of scan sources, depending on the VRS driver used.

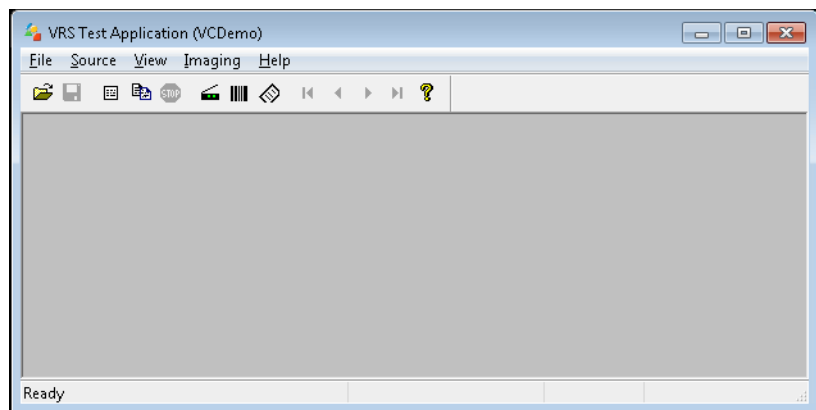
- VRS ImageControls®-based Applications
- VRS ISIS-based Applications
- VRS TWAIN-based Applications

NOTE: This User's Guide only documents the VRS-based scanning setup.

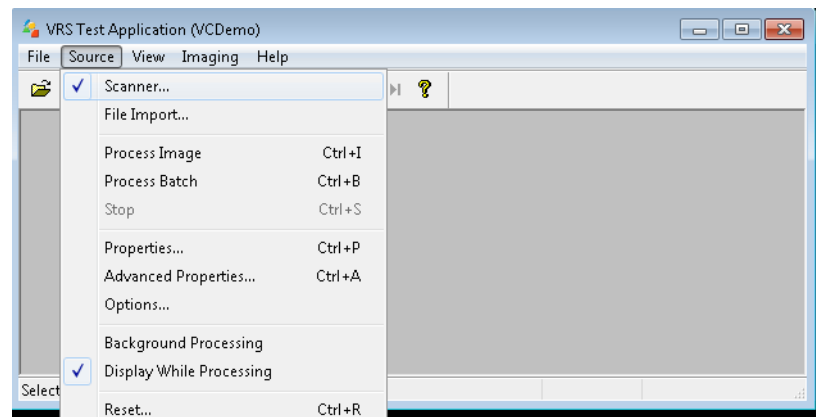
To open the VRS Test Application:

1. Select **Start>VRS Test Application**.

The VRS Test Application (VCDemo) screen will be displayed.

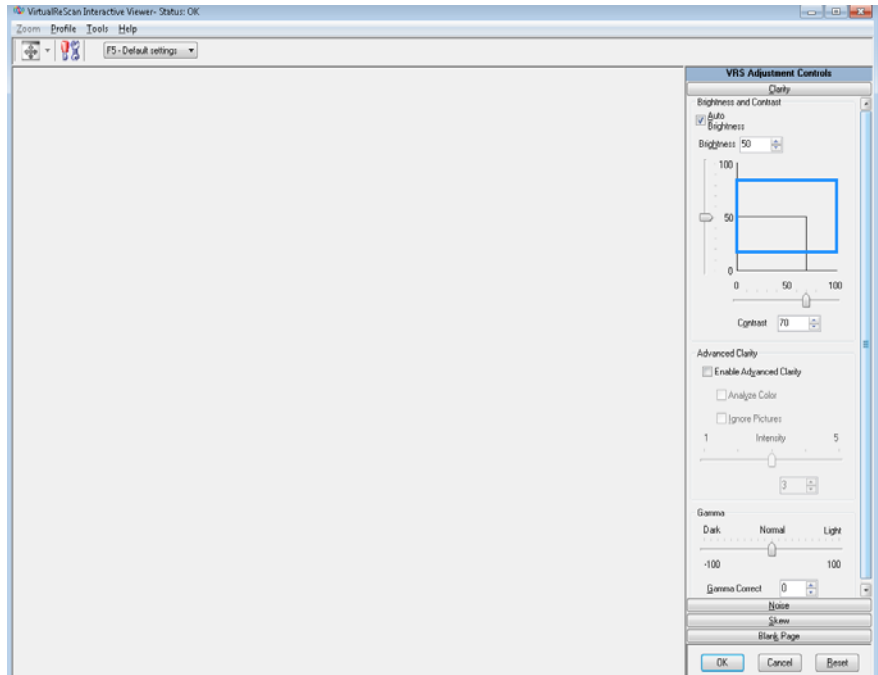



2. Select **Scanner>Source** to connect to the scanner.



3. When the scanner is connected, select **Source>Advanced Properties** to setup your scanner properties.

4. The VirtualReScan Interactive Viewer window will be displayed.



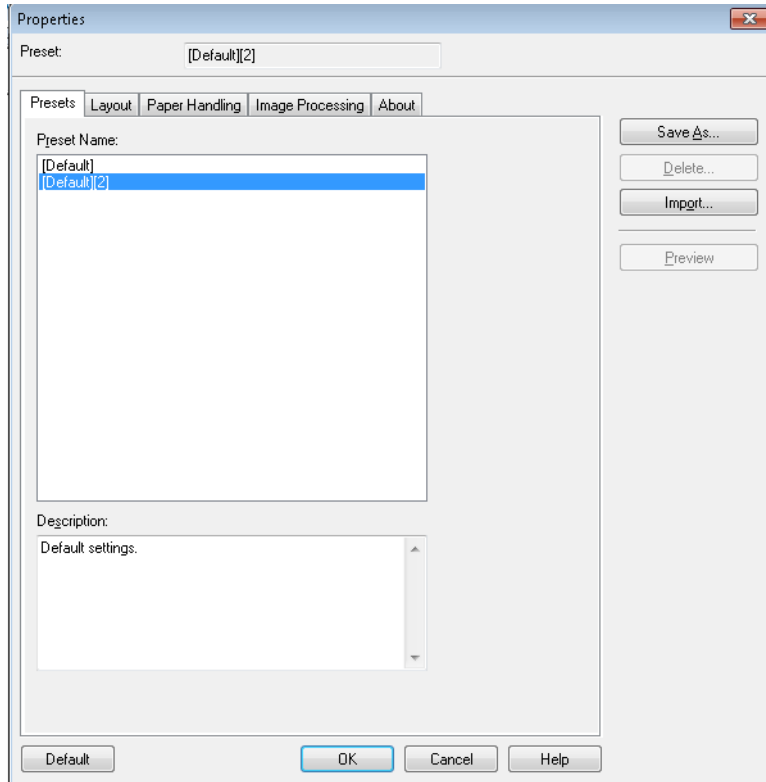
5. Within the Interactive Viewer, access the Advanced features by clicking the Scanner Driver Settings icon  to display the Properties window.

NOTE: Descriptions of the features on the tabs on the right side of the VirtualRescan Interactive Viewer window can be found in the VRS Manual on the Installation CD. Some useful features to note are:

- **Auto orientation** — located on the **Skew** button: allows you to do content-based orientation, in 90-degree increments.
- **Fill Holes** — located on the **Noise** button: allows you to fill in the holes that are around the edges of your document. The types of holes that are filled include: round, rectangular, and irregularly shaped (e.g., double-punched or those having a slight tear that could have occurred when the document was removed from a binder).
- **Blank Page Detection** — located on the Blank Page button: allows you to configure the scanner to not give blank images to the scanning application.

Preset tab

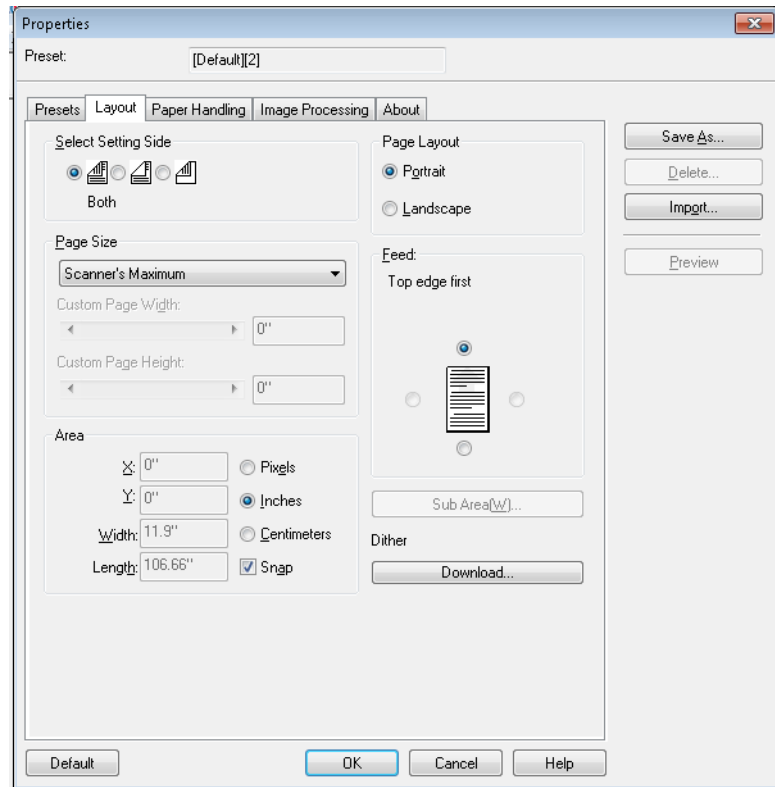
The Preset tab allows you to customize scanner settings and save them with a new preset name.



1. Click **Save As** to enter the name of your profile.
2. Proceed with clicking the other tabs to set up the properties for this profile.

Layout tab

The Layout tab provides the following options.



Select Setting Side — select the side of the image that you want to configure your page settings for. Options are: **Both**, **Front** or **Back**.

Page Size — the default page size is set when a scanner is first selected. You can choose a different page size using the drop-down list.

- **Custom Page Width/Custom Page Length:** if you select **Custom** from the *Page Size* drop-down list, **Custom Page Width** and **Custom Page Length** will become available. You can enter the width and length of the documents you want to scan in these fields. The maximum width is 11.9 inches; the maximum length is 100 inches.

Area — allows you to define the amount of image data which is returned to your PC.

- **X**: the distance from the left end of the scanner to the left-edge of the scanning area.
- **Y**: the position from the top end of the document to the top end of the scanning area.
- **Width**: the width of the scanning area.
- **Height**: the height of the scanning area.

Select whether you want the area to be defined in **Pixels**, **Inches** or **Centimeters**.

- **Snap** — enable this option to control the dimensions of the preview area to fixed 1/8-inch increments.

Page Layout

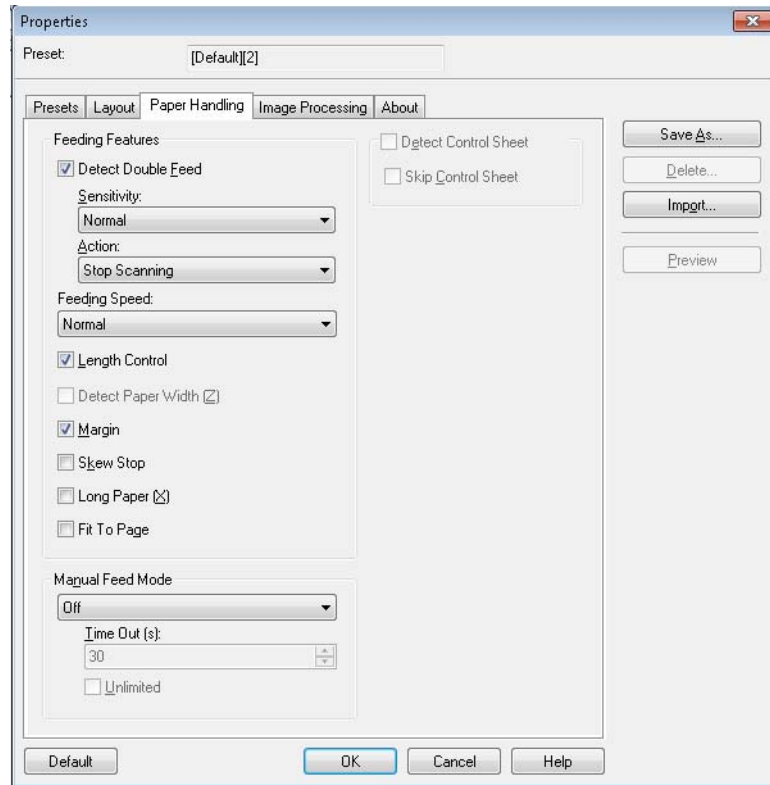
- **Portrait**: displays the image orientation in the shape of a conventional portrait, where height is greater than width.
- **Landscape**: displays the image orientation in the shape of a conventional landscape painting, where width is greater than height.

Feed — allows you to select the way you place your documents in the scanner, **Top edge first**, **Bottom edge first**, **Left edge first** or **Right edge first**.

- **Sub Area(W)**: this option is only available when Length Control in the Paper Handling tab is disabled.

Paper Handling tab

The Paper Handling tab provides the following options.



Feeding Features — check this option to set multi-feed detection.

Detect Double Feed: select this checkbox to turn Detect Double Feed on. This function detects the feeding of more than one document at a time. If a double feed is detected, you can stop scanning or be notified that a double feed is detected and continue scanning.

This function can detect double feeds even when sheets are superimposed exactly on top of each other, but it may not be detected properly with some paper thicknesses and when creasing and other factors are present.

If a double feed occurs, remove the document from the scanner and separate the double-fed pages, reinsert the document(s) into the feeder tray and press **Stop/Start** to resume scanning.

NOTE: For instructions on removing document jams, see the section entitled, “Clearing a document jam” in Chapter 7.

- **Sensitivity:** if the Detect Double Feed function operates incorrectly, adjust the sensitivity level by selecting one of the following levels:
 - **High** — select this when feeding thin documents.
 - **Normal** — this is the standard sensitivity.
 - **Low** — select this when feeding thick documents.

- **Action:** select one of the following:
 - **Beep** — if selected, will signal an alert when a double-fed document is detected.
 - **Stop Scanning** — stops the scanning process when a double-fed document is detected. This is the default.

Feeding Speed — when scanning thin paper, badly creased paper, fragile paper, etc. you can change the speed of the scanner.

- **Slow:** this speed slows the documents that are fed through the ADF to about one-half the speed of **Normal** mode. The image quality in the Slow mode is the same as in the Normal mode.
- **Normal:** this is the normal speed of the scanner and is used for most document scanning.

NOTE: At resolutions above 300 dpi, the paper is fed at the same speed as in the Normal mode even if **Slow** has been specified.

Length Control — limits the length of the image to the actual page length. For example, if you turn off **Length Control** and select *Page Size: Legal* but scan a letter size document, the image size will be 14 inches long (11 inches for lettersize plus 3 inches of black on the bottom).

If this option is turned on, with the same *Page Size: Legal* selection and you feed a letter size document, the length will be limited to 11 inches (the length of the actual document).

It has no effect if the document is longer than the selected page size; the bottom is still cut off. For example, if you select *Page Size: Letter* and feed a legal-size document, the image will be limited to 11 inches whether this option is enabled or not.

Detect Paper Width (Z) — not available.

Margin — places a black border around the outside of the selected page size. This option is always on so the scanner can perform deskew and crop operations as needed.

Skew Stop — when enabled, the scanner will stop feeding if it detects that the document being fed is at a highly skewed angle.

Long Paper (X) — allows the scanner to scan a document virtually infinitely long. It will scan paper of any length, and generate images of whatever size is selected in the Layout tab.

For example, if this option is enabled and you select a page size of **Letter** (8.5 x 11 inches) and feed paper that is 220 inches long, the result will be 20 separate images that are 8.5 x 11 inches in size.

Fit to Page — reduces or enlarges the image to fit the size of the selected paper.

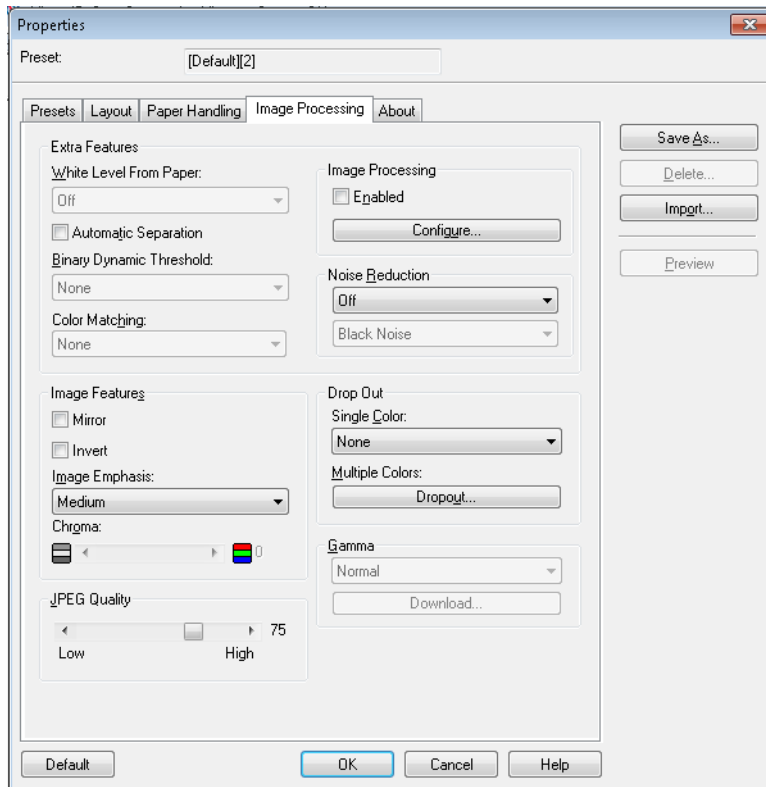
Manual Feed mode — select one of the following options for your scanning needs.

- **Off** — if you select this option, you will need to load the documents in the scanner and click **Start Batch** (or a button with similar name) in the scanning application to start scanning.
- **On** — select **On** when manually feeding documents. This should be selected when feeding mixed document types that are difficult to separate and may cause multifeeds. In this mode, the ADF is raised and the feeder rollers are not engaged until the document's leading edge approaches the feeder roller.
- **Start Button** — if selected, the scanner will not start feeding until the Stop/Start button is pressed.
- **Automatic** — this is the standard mode of operation. In **Automatic** mode, the “out of paper” indication is displayed immediately after a batch has been scanned. This is the default.
- **Timeout** — allows you to set the amount of time the scanner will wait after the last document enters the transport before the transport timeout action is taken. You can specify a time delay setting from **1** to **300** seconds.

NOTE: The Timeout option is active in all Manual Feed Mode options except for **Off**.

- **Unlimited** — this is unlimited timeout. It is only available in the **Start Button** and **Automatic** modes.
- **Detect Control Sheet** — if this option is checked, the scanner will detect when a control sheet is placed in a batch and change the scanner's settings (i.e., color mode) accordingly.
- **Skip Control Sheet** — if this option is checked, the scanner will not generate an image of the scanned control sheet.

The Image Processing tab provides the following options.



Extra Features

- **White Level from Paper** — check this option to reduce background noise.
- **Automatic Separation** — check this option if you want the scanner to attempt to separate text and images, and apply dithering to only images.
- **Binary Dynamic Threshold** — for documents with colored backgrounds, scanned in black and white.
- **Color Matching** — applies different color matching methods for standardized color reproduction.

Image Features

- **Mirror** — flips the output image horizontally.
- **Invert** — allows you to select how the black pixels will be stored in the image. By default the black pixels are stored as black and the white pixels are stored as white. Check this option if you want the black pixels stored as white and the white pixels stored as black.
- **Image Emphasis** — alters the sharpness of an image. **Smooth** is blurry, and **Low**, **Medium** and **High** are all levels of sharpness.
- **Chroma** — *color saturation*, a lower value removes color and the image will turn into grayscale. A higher value increases the color brightness.

JPEG Quality — select a compression value from 1 to 100. The lower the value will provide the maximum compression which produces the smallest image size. The higher the value will provide the least amount of compression which produces the largest image size.

Image Processing — not available.

Noise Reduction — reduces random noise by converting a single black pixel to white when it is completely surrounded by white pixels or by converting a single white pixel to black when it is completely surrounded by black pixels. Select to remove **Black Noise** or **White Noise**.

Drop Out — color dropout allows you to remove a one or more colors from a color document when scanning in Black and White mode. Up to 6 colors can be dropped out.

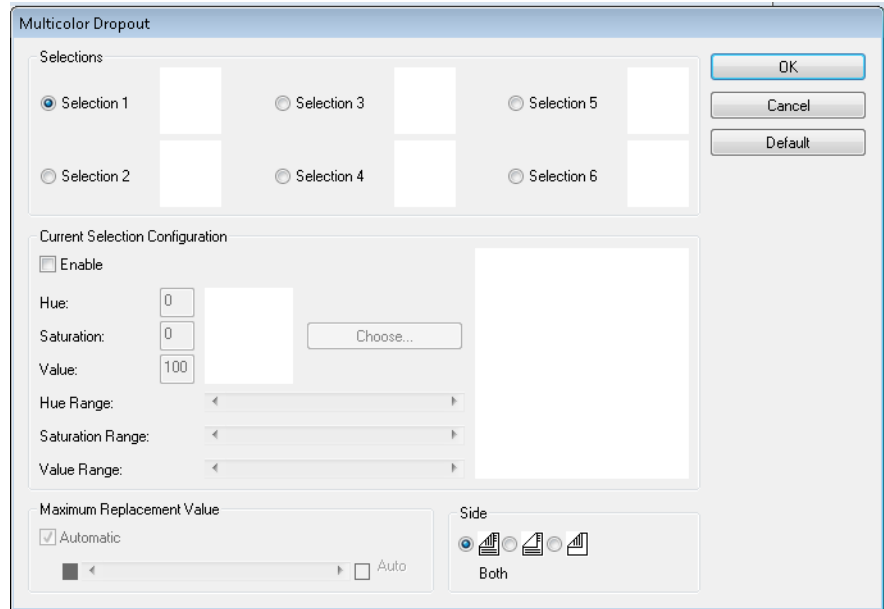
- **Single Color:** allows you to delete colored (red, green or blue) text or lines printed on documents. Single color dropout can only be used with binary images in black and white or binary modes and can be set independently for the front and back of a document. This functionality is primarily used in OCR (Optical Character Reading) to dropout form lines.

NOTE: Depending on the scanning conditions and colors, it may not be possible to delete the specified colors completely.

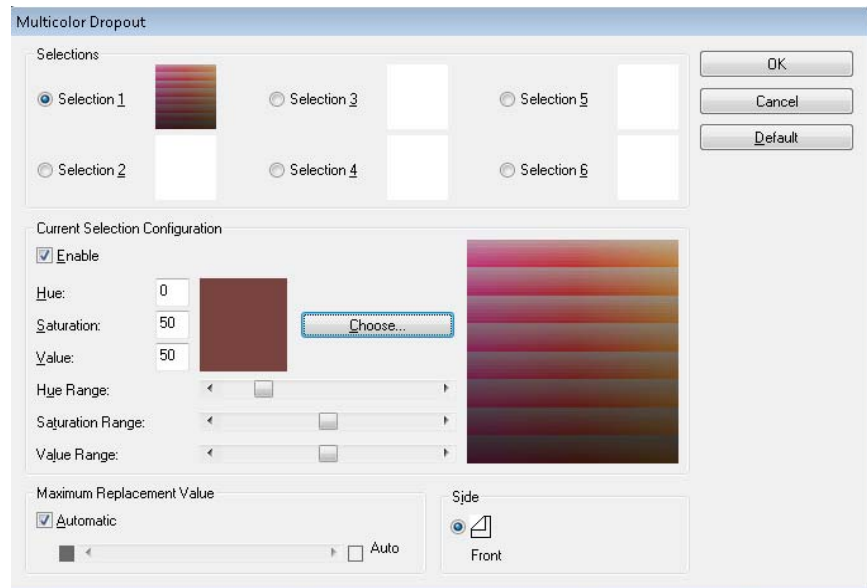
To drop out a single color, select **Red**, **Green** or **Blue** from the *Single Color* drop-down list.

- **Multiple Colors:** allows you to remove up to 6 colors. To drop out multiple colors:

1. Click the **Dropout** button. The Multicolor Dropout dialog box will be displayed.



2. Click **Selection 1**.



3. Adjust the **Hue Range**, **Saturation Range**, and **Value Range** bars. **Hue Range** determines how many colors to dropout, while the **Saturation Range** controls the amount of intensity to dropout and the **Value Range** is the level of brightness to dropout.

NOTES:

- The default values for **Hue**, **Saturation** and **Value** are typically accurate. However, if the dropout color requires adjusting, the **Hue**, **Saturation** and **Value** numbers can be modified manually.
 - **Hue** determines the color. **Saturation** defines the intensity of the color. **Value** controls the brightness of the color.
4. To add additional dropout colors, click the next **Selection** radio button and repeat steps 4 - 7.
 5. In the *Maximum Replacement Value* section, do one of the following:
 - Select **Automatic** and adjust the bar accordingly.
 - Select **Auto** to completely dropout the color.

To disable dropout colors:

- Select the **Selection** radio button for the color you want to disable and then uncheck **Enable**.

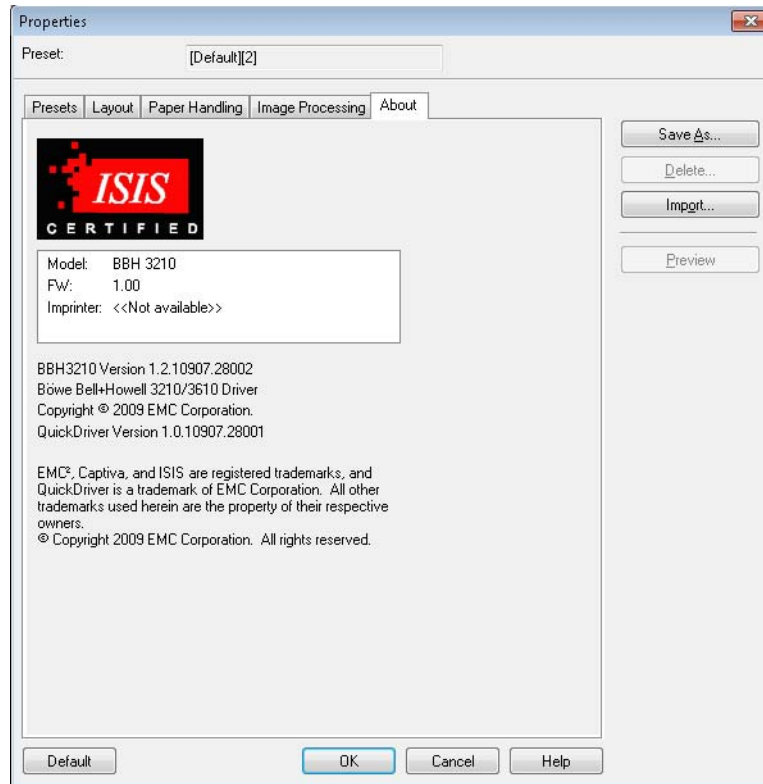
NOTE: Any and all of the selections can be active at the same time.

Gamma — this is a shading adjustment.

- **Normal**: uses a predefined curve that works best under most conditions in all color modes.
- **For CRT**: select if you intend to view the images on a display.
- **User Downloaded**: to download your own curve formula.
- **Linear**: no curve, straight line formula.

About screen

The About screen displays the scanner version and copyright information.



5 User Utility

Contents

Starting the User Utility 5-1
The User Utility dialog box 5-1

The User Utility is a software program used to maintain and troubleshoot the *Kodak Trüper* 3210 and 3610 Scanners. The User Utility is installed as part of the scanner’s software installation.

If the *Trüper* User Utility icon is not on your desktop, see the section entitled, “Installing the software” in Chapter 2.

Starting the User Utility

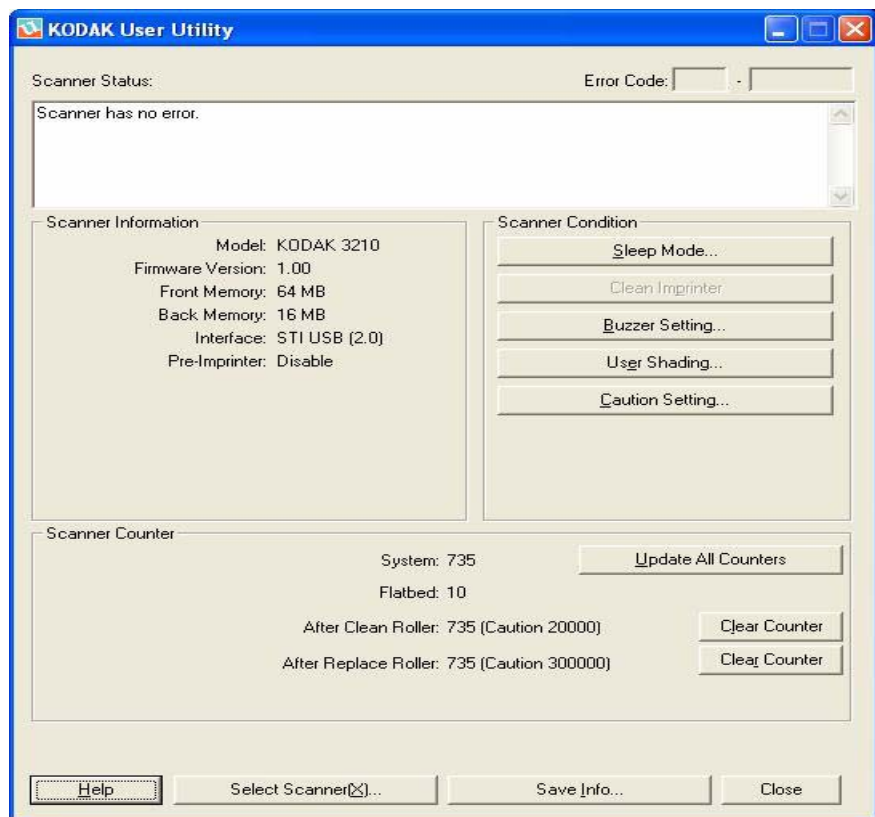


- Click the User Utility icon or click the **Start>Programs>Kodak>Scanner Tools**.

NOTE: When starting the User Utility, the Select Scanner dialog box may be displayed. If this dialog box is displayed, select the desired scanner from the drop-down list.

The User Utility dialog box

This dialog box displays the Scanner Status, Scanner Information, Scanner Counter and the User Utility functions and settings options.

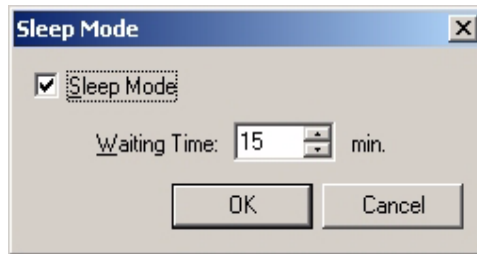


Scanner Status and Error Code — displays the status of the connected scanner along with error codes. For information about the messages and error codes, see the section entitled, “User Utility error codes” in Chapter 7.

Scanner Information — provides information about the connected scanner (i.e., Model, Firmware Version, Memory installed, etc.).

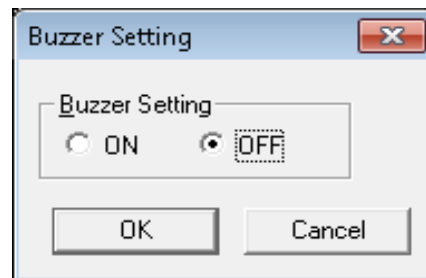
Scanner Condition — provides information about scanner settings.

- **Sleep Mode** — the scanner is configured with the power saver feature enabled with a 15-minute wait time. This conserves energy and reduces operating costs. Sleep Mode will go into effect after 15 minutes after the last scanner operation. If you want to change these values, click **Sleep Mode** and make your selection.



The wait time can be set from 1 to 60 minutes in 1-minute increments.

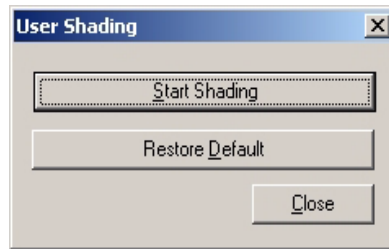
- **Clean Imprinter** — if you have the imprinter installed, this option is available. If the imprinter ink cartridge is clogged, verify that the imprinter door is closed and click the **Clean Imprinter** button to clean the cartridge. An automatic cleaning will be performed to improve the print quality.
- **Buzzer Setting** — click **ON** if you want the scanner can alert you with a buzzer when it detects a designated paper size.



- **User Shading** — provides adjustments to improve image quality. Shading adjustment should be performed when the density of the scanned images is uneven and the image displays perpendicular lines, when colors in some parts of the scanned image are extremely different from what is expected, or when the image quality fails to be improved after cleaning the scanner.

Before performing shading adjustment, thoroughly clean the drive rollers, background bars and ADF glass areas. Only use shading paper that is supplied with the scanner and is in good condition.

1. Click **User Shading** on the User Utility.



2. Click **Start Shading**. The User Shading utility will guide you through the necessary steps.
3. Clean the inside of the scanner. See the section entitled, “Cleaning inside the scanner” in Chapter 6. When finished, click **OK**.
4. Turn over the upper and lower background bars to white. See the section entitled, “Changing the background bars” in Chapter 3. When finished, click **OK**.
5. Place the shading paper in the feeder tray in the Landscape position, then click **OK**. The scanner reads the shading paper and the shading adjustment sets the background bars for the white shading. Wait until the message **Now Adjusting** is cleared from the screen.
6. Turn the upper and lower background bars over to the black side. When finished, click **OK**.

NOTE: The shading paper is NOT used for the black background bars.

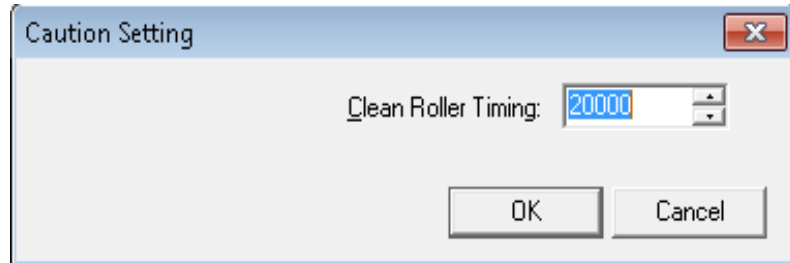
The shading adjustment data with the black background bar is created. Wait until the message **Now Adjusting** is cleared from the screen.

7. Click **OK** to complete shading adjustment.

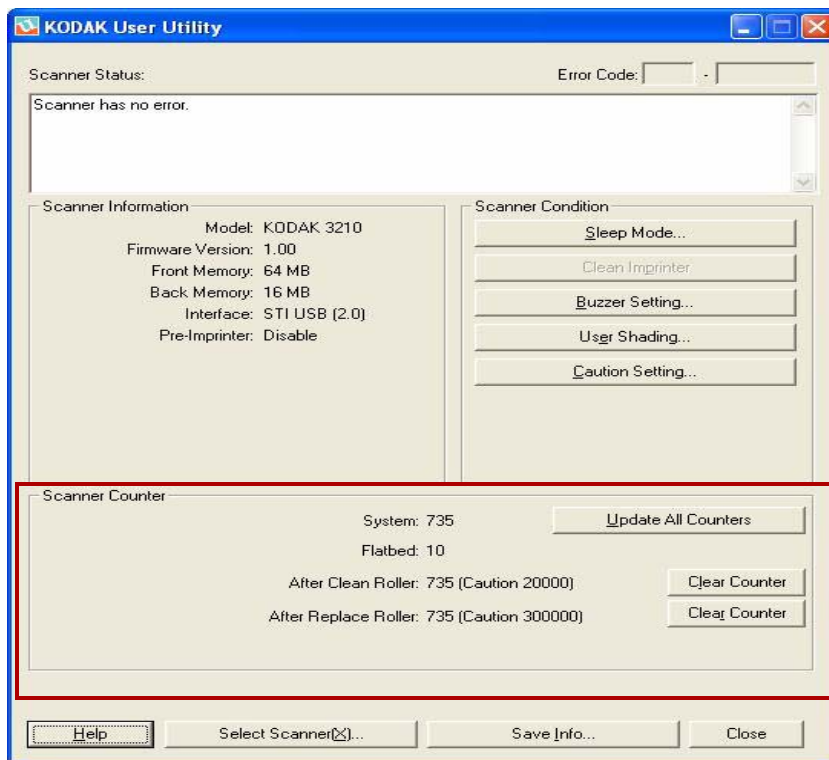
NOTE: If the scanned images are still lined after the shading adjustment and these lines are not eliminated even after the ADF glass areas have been cleaned, the shading has not been compensated properly. Clean the parts again and perform the shading adjustment procedure again.

- **Restoring shading to the default:** you can restore shading adjustment data to the default setting by clicking **Restore Default** on the User Shading dialog box. Restore the default if the image quality deteriorates or has not improved as a result of the shading adjustment process.

Caution Setting — click this option to set the number of pages scanned after the rollers were last replaced that you want to be reminded that it is time to clean the rollers.



Scanner Counter — the scanner counter can be used to keep track of the number of documents scanned. The counters also provide a reminder for roller cleaning and parts replacement.



- **System** — displays the number of pages scanned in ADF mode after the last counter update.
- **Flatbed** — displays the number of pages scanned in Flatbed mode after the last counter update.

- **After Clean Roller** — displays the number of pages scanned after the rollers were last cleaned. When the *After Clean Roller* number is greater than the *Warning* number, the rollers need to be cleaned. (The *Warning* number indicates how many pages can be scanned after roller cleaning before the rollers need to be cleaned again.)
- **After Replace Roller** — displays the number of pages scanned after the rollers were last replaced. When the *After Replace Roller* number is greater than the *Warning* number, the rollers need to be replaced. (The *Warning* number indicates how many pages can be scanned with a new set of rollers before the rollers need to be replaced.)
- **Update All Counters** — updates the counter display to the most current numbers. Document scanning operations do not automatically update the counter displays.
- **Clear Counter** buttons — there are two **Clear Counter** buttons, one to clear the *After Clean Roller* display and one to clear the *After Replace Roller* display.
 - After you clean the rollers, click **Clear Counter** for *After Clean Roller* and reset the number to zero.
 - After you replace the rollers, click **Clear Counter** for *After Replace Roller* and reset the counter to zero.

Help — opens the *Kodak Trüper 3210 and 3610 Scanners User's Guide* in PDF file format.

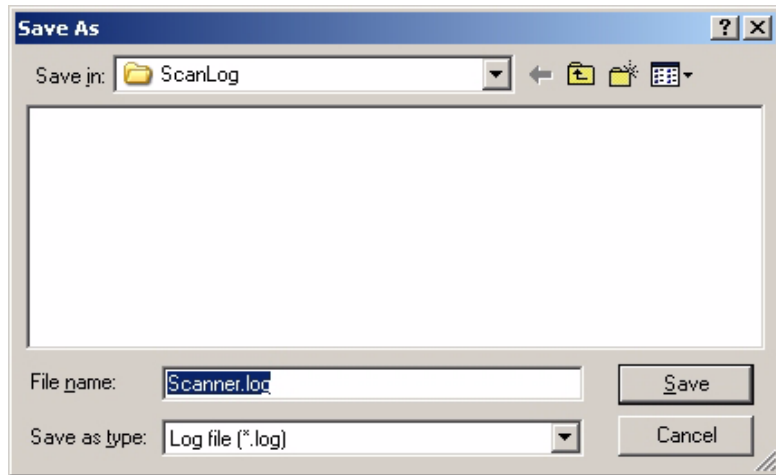
Select Scanner(X) — opens the Select Scanner dialog box. If more than one scanner is connected to the computer, you can use the Select Scanner dialog box to select a different scanner. The User Utility functions and settings will then apply to the selected scanner. To select a different scanner:

1. Click **Select Scanner(X)**.
2. Click the drop-down list and select a different scanner, then click **OK**.

Save Info — allows you to save current scanner and computer system information to a log file.

1. Click **Save info**.
2. In the *Save in* drop-down list, browse to find a location to save the log file.
3. In the *File name* box, type a file name for the log file (the default file name is *Scanner.log*).

4. Click **Save**.



Close — closes the User Utility.

Check Version Information — right-click the title bar at the top of the display window and click **About** to view the version information.

6 Maintenance

Contents

Cleaning procedures	6-1
Roller cleaning	6-2
Cleaning the outside of the scanner	6-2
Cleaning inside the scanner	6-2
Cleaning the rollers in the ADF area	6-3
Cleaning the rollers in the Exit area	6-5
Cleaning the background bars and imaging guides	6-6
Cleaning the sensors	6-6
Cleaning the flatbed	6-9
Replacing consumables	6-10
Supplies and consumables	6-13

Cleaning procedures

The following cleaning guidelines and procedures will help ensure best scanner performance.

NOTE: Use only the recommended cleaning supplies when cleaning the scanner.

- If paper jamming, marking or multiple-sheet feeding occurs frequently, clean the rollers, sensors and double feed detector as described in this section. If paper jamming, marking or double feeding occurs frequently even after cleaning, you may need to change the rollers.
- To maintain scanning quality, clean the scanner at least once a week or after 20,000 sheets have been scanned, whichever comes first. To determine the number of sheets scanned, use the *Trüper* User Utility.
- Be sure the documents you scan are clean. If the documents you scan are dirty, the scanner components will also become dirty.
- When scanning with the flatbed, if black dots or white patches appear in the scanned results, open the document cover and clean the flatbed glass and flatbed sheet using Staticide wipes. If black or white lines appear on the scanned images, clean the imaging guides and the background bars.
- It is recommended that you clean all of the rollers at the same time.

Roller cleaning pads

Review the following information before using the roller cleaning pads

- If you need more information about the roller cleaning pads, refer to the Material Safety Data Sheet (MSDS). See the Kodak website at: www.kodakalaris.com/go/msds.
- Additional roller cleaning pads can be purchased. See “Supplies and consumables” later in this chapter for ordering information.

NOTE: Use the roller cleaning pads immediately after opening the bag. If the bag remains open for a long period of time, the alcohol cleaning solution will evaporate and the cleaning pad will not be effective.


Cleaning the outside of the scanner

Clean the outside of the scanner at least once a month.

1. Turn the scanner off.
2. Clean the exit tray, the feeder and feeder tray, ADF cover and other surfaces with a soft cloth.
3. Clean the feeder tray and exit tray of the ADF at least once a month or more often if there is an accumulation of dirt, dust and grime.
4. Use a brush to remove dirt and dust from the exhaust fan vent and the two vents on the left and right side on the back of the scanner.

Cleaning inside the scanner

If paper jamming, marking, or multiple-sheet feeding occurs frequently, clean the rollers, sensors and double feed detector as described in this section. To maintain scanning quality, clean the scanner components frequently: Clean inside the scanner at least once per week or after 20,000 sheets have been scanned, whichever comes first.

NOTE: To determine the number of sheets scanned, use the  Trüper User Utility. See the *Chapter 5, Trüper User Utility* for more information.

The following guidelines are for cleaning inside the scanner:

- Be sure the documents you are scanning are as clean as possible to minimize frequent scanner dirt and dust buildup.
- When cleaning the rollers, hold the roller to prevent it from rotating, then horizontally wipe the roller from side to side. Turn the roller as you continue to wipe until the entire roller has been cleaned.
- If black or white lines appear on the scanned images, clean the imaging guides and the background bars as described in the section entitled, “Cleaning the background bars and imaging guides” later in this chapter.
- If paper jamming, marking, or multi-sheet feeding occurs frequently even after cleaning, you may need to change the rollers as described in the section entitled, “Replacing consumables” later in this chapter.

Cleaning the rollers in the ADF area

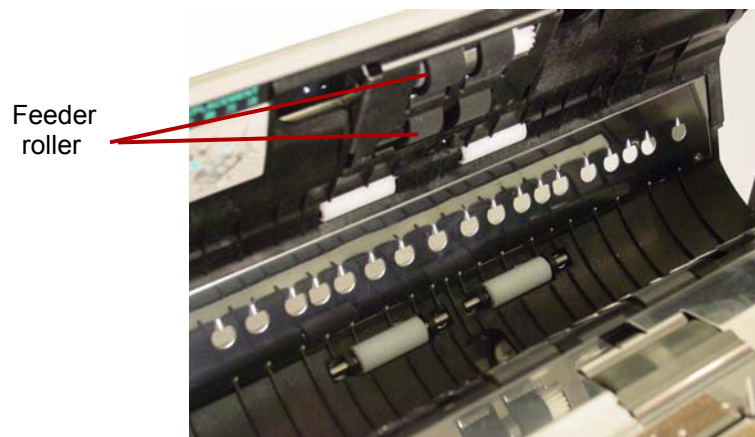
Cleaning the paper feeder roller and separation roller

1. Turn the scanner off.

2. Push the ADF door release button to open the ADF.



3. Use the roller cleaning pad to remove any dirt or grime from the surfaces of the paper feed roller and separation roller.



4. Open the separation roller cover by pulling up from the indent on the right side.



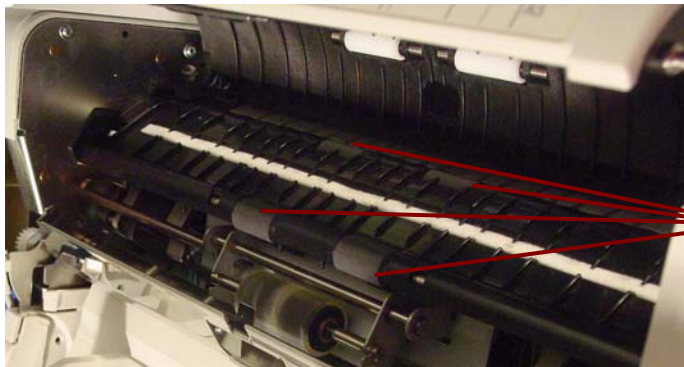
5. Use the roller cleaning pad to remove the dirt from the surface of the separation roller.



6. Close the separation roller cover.

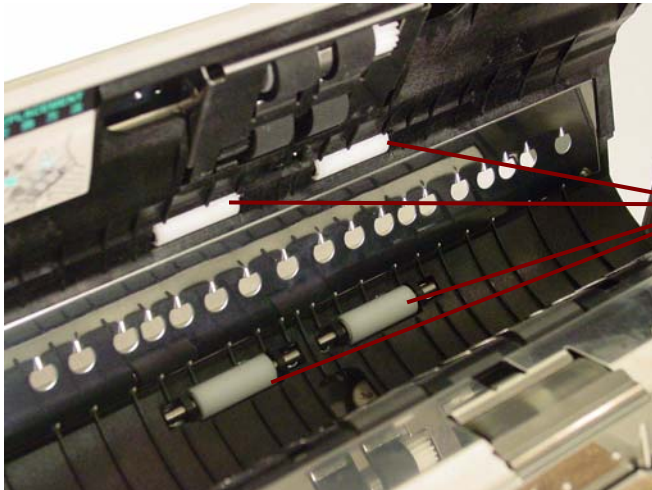
Cleaning the drive rollers and free rollers in the ADF

7. Use the roller cleaning pad to remove the dirt from the surfaces of the four drive rollers.



Drive rollers

8. Use the roller cleaning pad to remove the dirt from the surfaces of the four free rollers.



Free rollers

9. Close the ADF door.

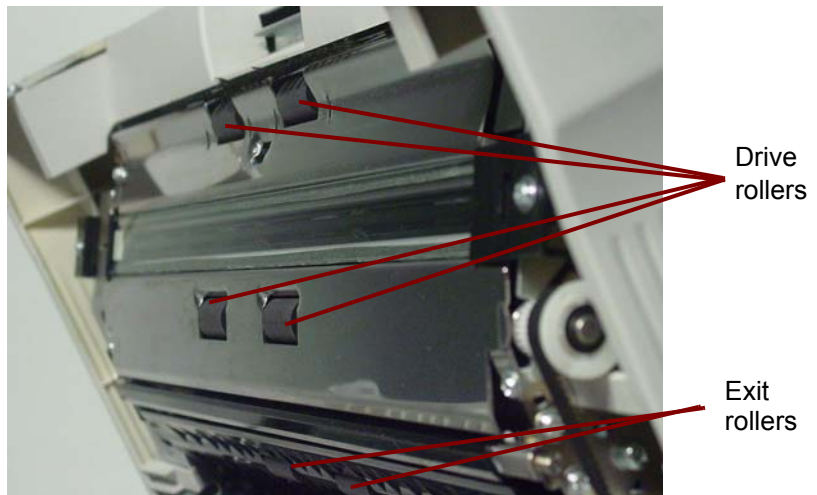
Cleaning the rollers in the Exit area

Cleaning the drive rollers, free rollers and exit rollers in the exit door

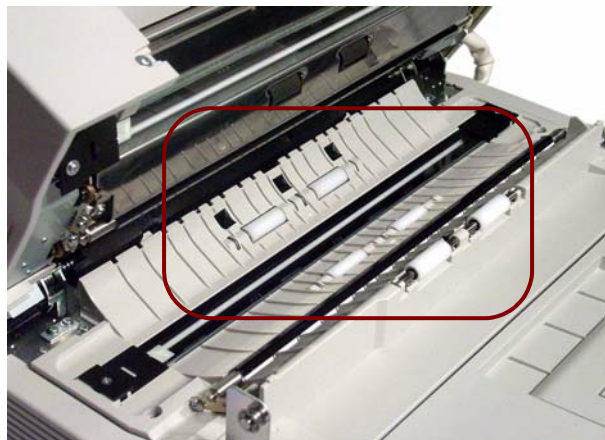
1. Pull the exit door release lever to open the exit door.



2. Use the roller cleaning pad to remove the dirt from the surfaces of the four drive rollers and the two exit rollers.



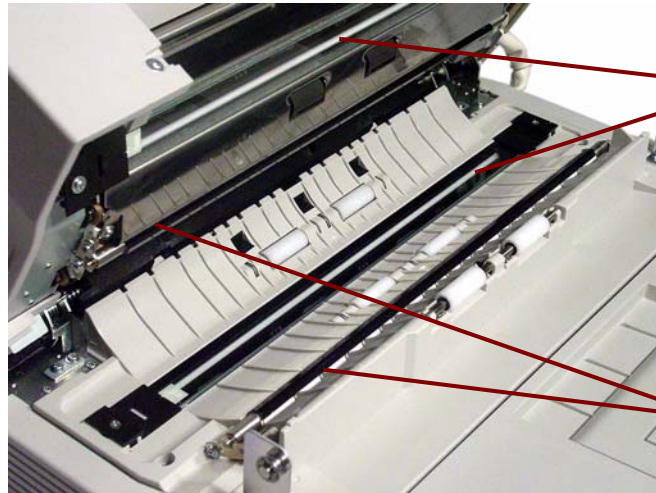
3. Use the roller cleaning pad to remove the dirt from the surfaces of the six free rollers.



4. Gently close the exit door.
5. When finished, turn the scanner on.
6. After cleaning the rollers, open the User Utility and click **Clear Counter** to clear the roller counter. For more information, see the section entitled, "Scanner counter" in *Chapter 5, TruPer User Utility*.

Cleaning the background bars and imaging guides

1. Turn the scanner off.
2. Pull the exit door release lever to open the exit door.
3. In the scanner base assembly, clean the upper and lower imaging guides and background bars with a Staticide wipe.



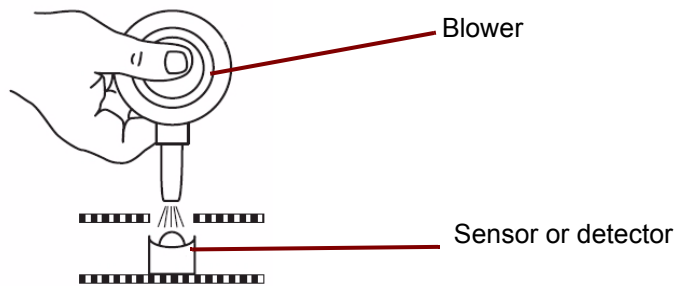
Upper and lower imaging guides

Upper and lower background bars

4. Gently close the exit door.

Cleaning the sensors

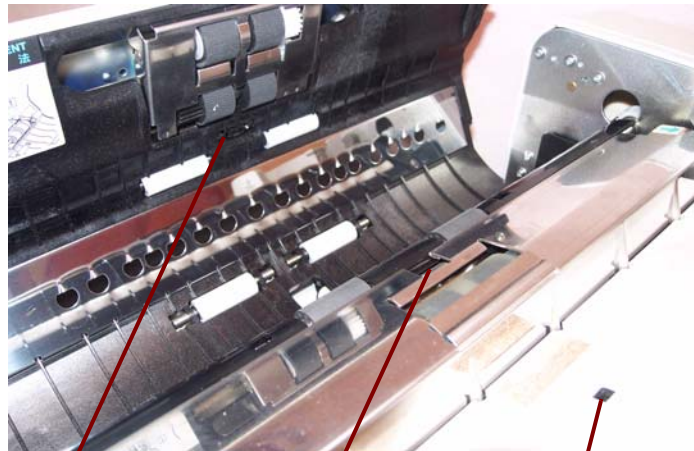
Use the blower accessory to clean all sensors.



Cleaning the paper sensor, waiting sensors and double feed detector

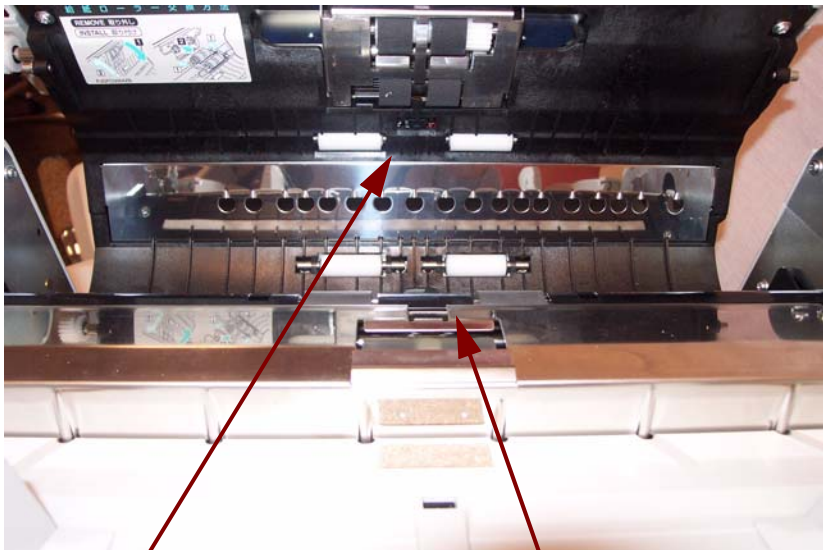
1. Press the ADF door release button to open the ADF door.

2. Use the blower accessory to blow off any dirt from the surface of the paper sensor and waiting sensor. Also, blow off any dirt from the surface of the metal reflector sheet used by the waiting sensor.



Waiting sensor Reflector sheet for waiting sensor Paper sensor

3. Blow off any dirt from the double feed detectors.

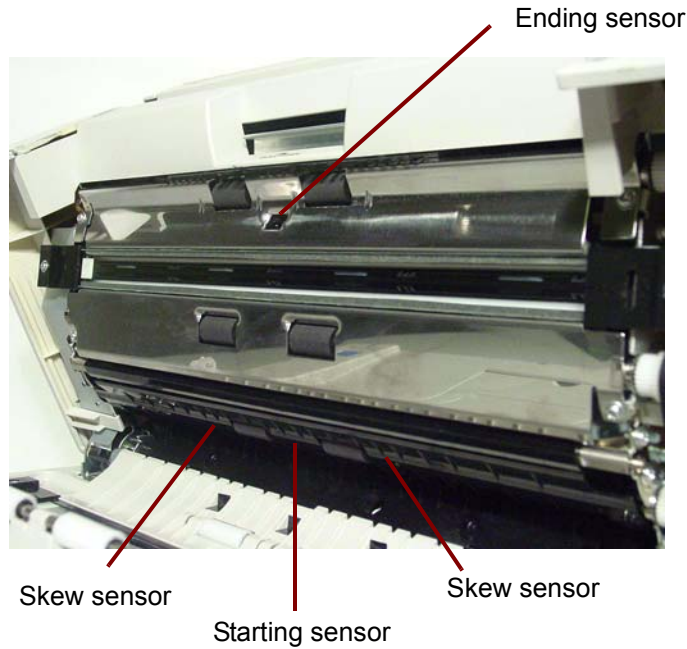


Double feed detector Double feed detector

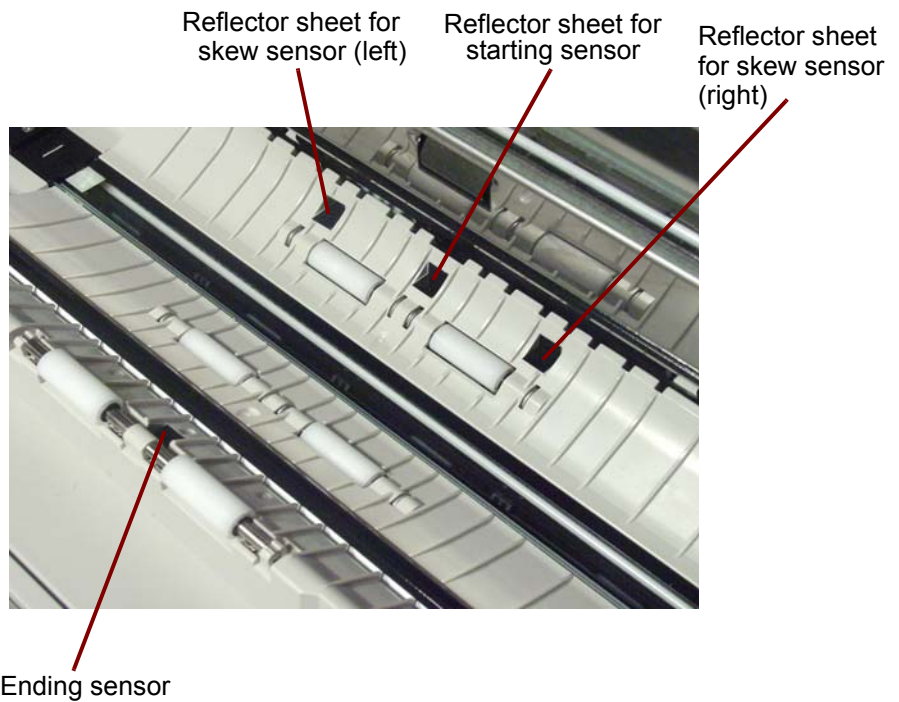
4. Gently close the ADF door.

Cleaning the starting, skew and ending sensors

1. Pull the exit door release lever to open the exit door.
2. Blow off any dirt from the surface of the starting sensor, right and left skew sensors and ending sensor.



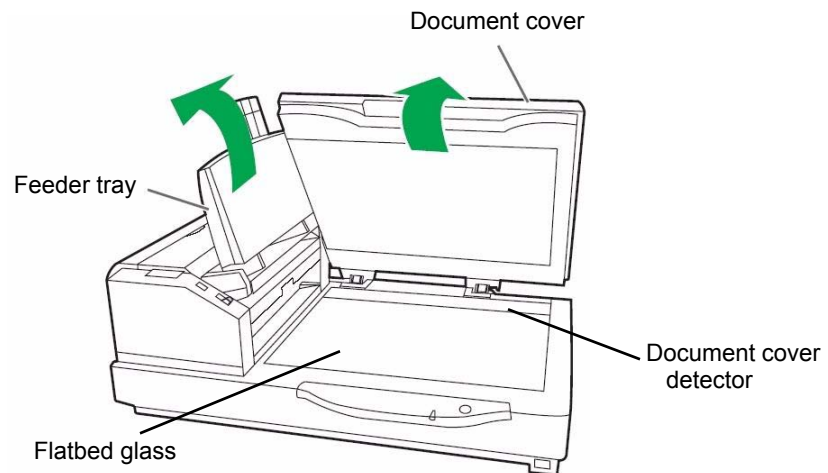
3. Blow off any dirt from the reflector sheets for the starting sensor, skew sensor (left), skew sensor (right) and the ending sensor.



4. Gently close the exit door.

Cleaning the flatbed (3210 Scanner)

1. Raise the feeder tray until the tray clicks into place.
2. Open the document cover.



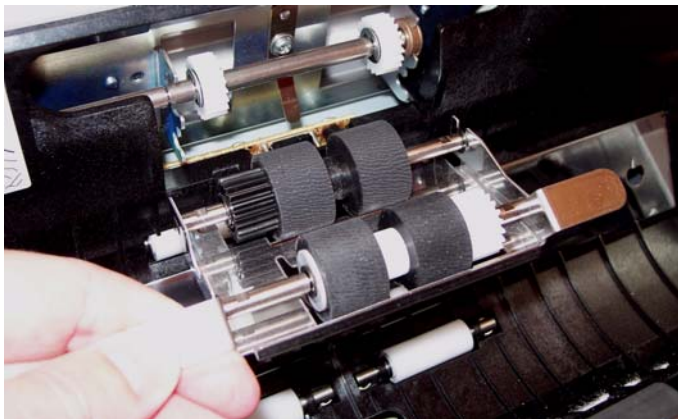
3. Clean the surface of the flatbed glass with a Staticide wipe. If required, clean the surface of the flatbed sheet.
4. Use the blower accessory to blow off any dirt that may have accumulated in the area of the document cover detector.
5. Gently close the flatbed cover and lower the feeder tray.

Replacing Consumables

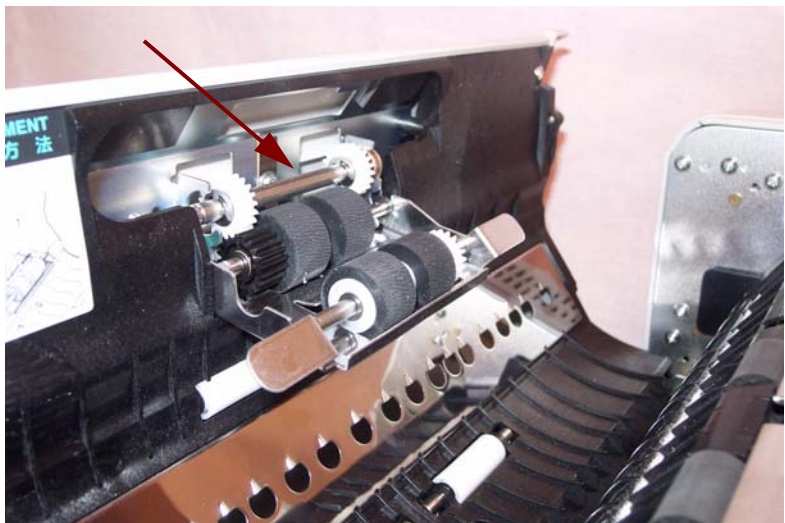
Replace the feed roller module and the separation roller module after 300,000 scans. Replace the roller modules more often if feeding problems continue after cleaning (i.e., paper jamming, slipping, multi-feeding, marking, etc.)

Replacing the paper feed roller module

1. Turn the scanner off.
2. Push the ADF door release button to open the ADF door.
3. Open the Roller Exchange Kit. See “Supplies and consumables” later in this chapter for more information regarding additional Roller Exchange Kits.
4. Remove the paper feed roller module from the ADF door.
 - Place your fingers on the tabs on the sides of the roller module and pull down the roller module.

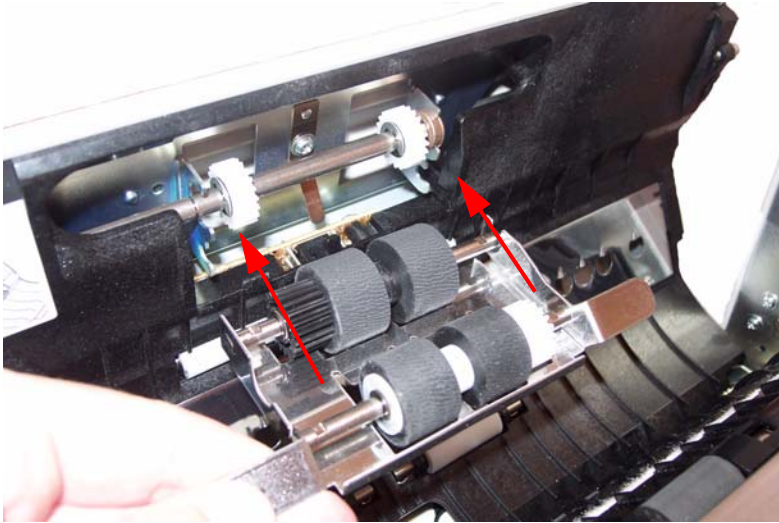


- Disengage the shaft on the roller module from the brackets in the ADF door assembly. Carefully disengage the gears on the roller module from the gears in the ADF door assembly.

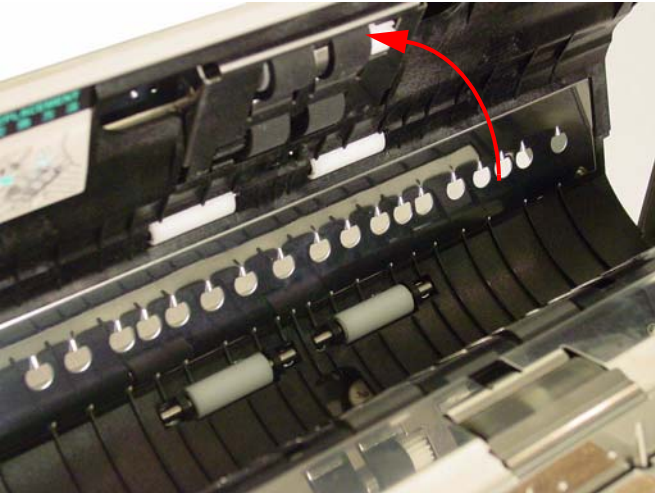


5. Install the new paper feed roller module by inserting the shaft on the roller module into the brackets in the ADF door assembly.

Take care to match the gears on the roller module with the gears in the ADF door assembly.

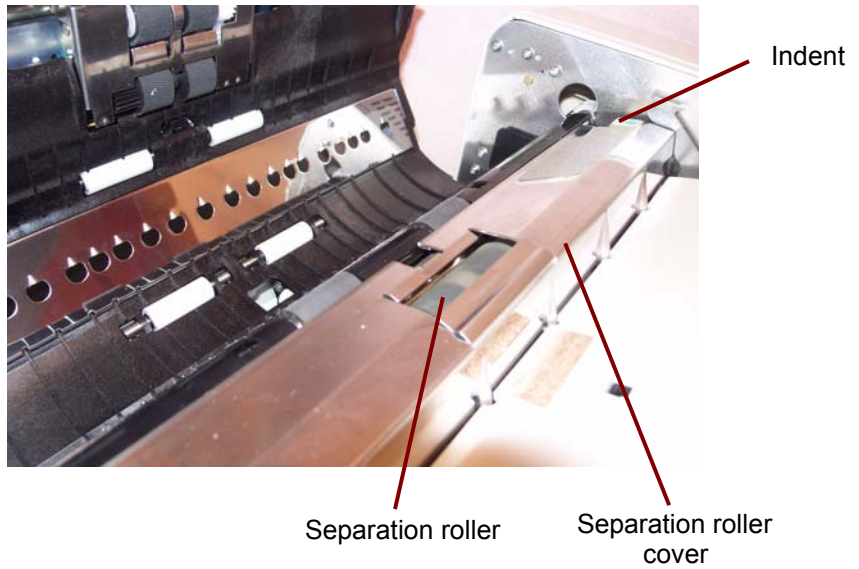


6. Push up the roller module until it is locked in place.

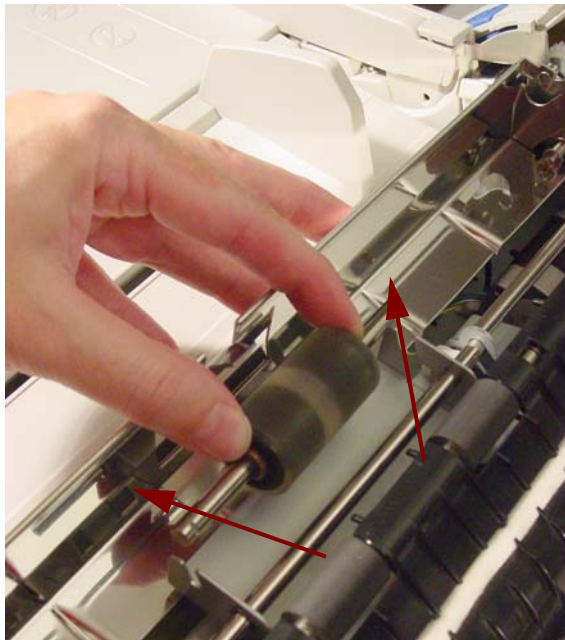


Replacing the separation roller module

7. Grasp the indent section of the separation roller cover and remove the cover to expose the separation roller.

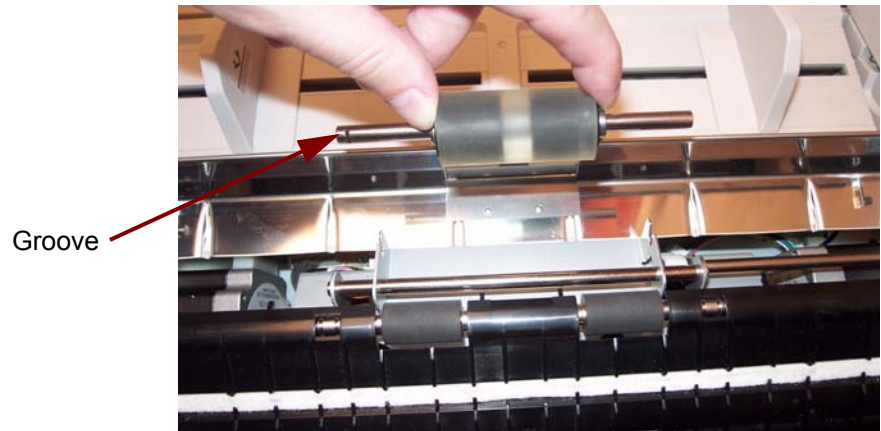



8. Remove the separation roller from the metal brackets by holding the ends of the roller shaft and pulling the roller up and out of the scanner.



9. Open the Roller Exchange Kit and take out the new separation roller.

10. Install the new separation roller by lowering the roller into the metal brackets. Take care to match the groove on one side of the roller shaft with the metal bracket that fits the groove. When the groove is matched with the bracket, the roller shaft slides into the bracket.



11. Close the separation roller cover.
12. After replacing the paper feed and separation roller modules, click the  icon to open the *Trüper* User Utility. Select the User Utility option and click **Clear Counter** to clear the roller counter. For more information, see the section entitled, “Scanner counter” in *Chapter 5, Trüper User Utility*.
13. Gently close the ADF door and turn on the scanner.

Supplies and consumables

Contact your scanner supplier to order supplies.

Description	CAT No.
Staticide Wipes for <i>Kodak</i> Scanners (qty 144)	896 5519
<i>Kodak Digital Science</i> Roller Cleaning Pads (qty 24)	853 5981
Roller Exchange Kit	846 0321
Shading Paper	153 5376
NCR Residue Cleaning Pad	103 3893
Printer: Black Cartridge	818 3386
Printer: Red Cartridge	159 6832
Accessories	CAT No.
Memory Upgrade Kit	124 4847
Imprinter Accessory	896 1955
Long Document Paper Weight Kit	109 2436

NOTE: Items and catalog numbers are subject to change. For the most up to date list of supplies and consumables go to: www.kodakalaris.com/go/scannersupplies.

7 Troubleshooting

Contents

Clearing a document jam	7-1
Removing documents from the ADF area	7-1
Removing documents from the exit area	7-2
Problem solving	7-2
User Utility error codes	7-4
Scanner LED status	7-5
Contacting Service	7-5

Clearing a document jam

Following are procedures for clearing an occasional document jam.

Removing documents from the ADF area

To minimize document jams, review the “Getting your documents ready to scan” in Chapter 3 for best feeder performance.

***IMPORTANT:** Only remove jammed documents from the ADF when the ADF door is open. Removing documents when the door is closed may damage the document.*

1. Press the ADF door release button to open the ADF door.
2. Remove any jammed document(s) from the document feeder.



NOTE: When only the bottom end of a jammed document is visible with the ADF door open, keep the ADF door open and also open the exit door. Carefully remove the jammed paper through either the document feeder or the exit path. To remove paper from the exit path, see the next section, “Removing documents from the exit area”.

3. Gently close the ADF door and resume scanning.

Removing documents from the exit area

1. Raise the feeder tray and pull the exit door release lever to open the exit door.



2. Remove the jammed document.
3. Close the exit door and lower the feeder tray back into position.

Problem solving


Occasionally you may encounter a situation with your scanner where it may not function properly. Use the chart below as a guide to check possible solutions to help you resolve the situation before calling Technical Support.

If a problem persists after you have checked the User Utility status messages and error codes as described in the “User Utility error codes” section later in this chapter, review the problems and possible solutions below. If the scanner still is not working, turn the scanner off, unplug the power cord and call Technical Support.

Problem	Possible Solution
The LED does not light when the power button is turned on.	<ul style="list-style-type: none"> • Be sure that the power cord is securely plugged into the power outlet and into the scanner power input. • There could be a problem with the power supply. Disconnect the scanner from the power outlet and call Service.
The computer does not recognize the scanner.	<ul style="list-style-type: none"> • Be sure the scanner is properly connected to the computer. See “Making connections” in Chapter 2. • The scanner has not been properly configured using the Windows “Found new hardware” procedure. Uninstall the scanner from the computer and reinstall the scanner in order to recognize the scanner hardware. See “Installing the Windows scanner driver” in Chapter 2. • Check the computer to determine that the USB interface is installed properly. Check the USB properties using the Windows Device Manager. • Verify that the scanner is not connected to a USB hub. • Be sure the USB cable does not have a High Speed log. Only use the cable that was provided with the scanner.
Scanning speed is too slow using the USB connection.	<ul style="list-style-type: none"> • Verify that the scanner is connected with a USB 2.0 interface.
The ADF door does not open when the ADF door release button is pressed.	The ADF door is not closed properly. Push the ADF door release button and lift up the ADF door, then close the ADF door securely until it is locked. DO NOT slam the ADF door.

Problem	Possible Solution
(ADF) The document has been loaded on the feeder tray, but the scanner does not start scanning.	<ul style="list-style-type: none"> • The document is not loaded properly. See the section entitled, “Scanning documents” in Chapter 3. • The sensor cannot detect the document because the edge of the document is curled. Flatten the document and load it again. See the section entitled, “Getting your documents ready to scan” in Chapter 3.
(ADF) Double feeding or skewing problems occur frequently or the scanner stops feeding while scanning.	<ul style="list-style-type: none"> • The rollers may be dirty or have reached their life expectancy. Clean the rollers and examine them for wear. See <i>Chapter 6, Maintenance</i> for cleaning and replacement procedures. • The document is curled or folded. Flatten the document, reduce the number of sheets in the feeder tray and load the document again.
(ADF) Scanned image is skewed.	<ul style="list-style-type: none"> • Be sure the document guides are adjusted to the size of the documents being scanned. • Verify that the document to be scanned is straight in the feeder tray. • The right and left sides of the document to be scanned are not the same height because of curls and folds. Remove the curls or folds, reduce the number of sheets in the feeder tray and load the document again. <p>For 3210 Scanner only:</p> <ul style="list-style-type: none"> • An irregular type of document needs to be scanned. Use the flatbed to scan the document. • The document length is less than 2.75 in (70 mm). Use the flatbed to scan the document.
(ADF) The scanned document is blank.	Verify that the document to be scanned is positioned correctly in the feeder tray. Documents should be placed in the feeder tray face-up .
Vertical lines appear on the scanned document.	Clean the imaging guides (or flatbed glass) and background bars. See <i>Chapter 6, Maintenance</i> for cleaning procedures.
The scanning density is uneven.	<ul style="list-style-type: none"> • Clean the imaging guides (or flatbed glass) and background bars. See <i>Chapter 6, Maintenance</i> for cleaning procedures. • Perform a shading adjustment. See <i>Chapter 5, User Utility (User Shading)</i> for more information.
The color of the scanned document is very different from the original document.	Adjust the computer display and monitor settings.
Dark spots or noise appear on the scanned documents.	Clean the imaging guides (or flatbed glass) and background bars. See <i>Chapter 6, Maintenance</i> for cleaning procedures.
Scanned image has moire fringes or patterns, such as stripes or wavy pattern noise.	This is caused by the original printing pattern on the document and the selected scanning resolution. Change the scanning resolution, then scan the document(s) again.
Image crop failures with VRS scanning.	Paper or dust may be on the background bars. Examine and clean the background bars. See <i>Chapter 6, Maintenance</i> for cleaning procedures.

User Utility error codes

If an issue occurs during scanning, click the  icon to open the *Trüper* User Utility. Check the *Scanner Status* message and *Error Code* information. The following table explains the error codes and messages and describes possible causes/solutions.

Error code and message	Possible Cause/Solution
U11, U12, U13, U14, U15, U16, U17 Jam occurred. Please open the door and remove the paper.	A document is jammed or the document sensors are dirty. <ul style="list-style-type: none"> • Open the ADF and exit doors and remove the jammed paper. See “Clearing a document jam” earlier in this chapter. • Clean the sensors. See <i>Chapter 6, Maintenance</i> for cleaning procedures.
U18 Document remains in the scanner. Please open the door and remove the paper.	A document is jammed or the document sensors are dirty. <ul style="list-style-type: none"> • Open the ADF and exit doors and remove the jammed paper. See “Clearing a document jam” earlier in this chapter. • Clean the sensors. See <i>Chapter 6, Maintenance</i> for cleaning procedures.
U20 Skew error occurred.	<ul style="list-style-type: none"> • Open the ADF and exit doors and remove the jammed paper. See “Clearing a document jam” earlier in this chapter.
U23 Double feed occurred. Please open the door and remove the paper.	A double feed has occurred or the rollers are dirty. <ul style="list-style-type: none"> • Open the ADF and exit doors and remove the jammed paper. See “Clearing a document jam” earlier in this chapter. • Clean the rollers. See <i>Chapter 6, Maintenance</i> for cleaning procedures.
U30, U32, U34 Scanner door is open. Please close the door.	<ul style="list-style-type: none"> • Securely close the ADF door.
Fxx System error occurred. Please contact Technical Support.	<ul style="list-style-type: none"> • Contact Technical Support.
Warning The rollers need to be cleaned. Please clean the rollers. Please select the Clear Counter button after cleaning the rollers.	Warning counter has expired The rollers need to be cleaned. <ul style="list-style-type: none"> • Clean the rollers. See <i>Chapter 6, Maintenance</i> for cleaning procedures. After cleaning the rollers, return to the User Utility and click the Clear Counter button. See the section entitled, “The User Utility dialog box” (Scanner Counter) in Chapter 5.
Warning The rollers need to be replaced. Please replace the rollers. Please select Clear Counter button after replacing the rollers	Warning counter has expired The rollers need to be replaced. <ul style="list-style-type: none"> • Replace the rollers. See <i>Chapter 6, Maintenance</i> for replacement procedures. After replacing the rollers, return to the User Utility and click the Clear Counter button. See the section entitled, “The User Utility dialog box” (Scanner Counter) in Chapter 5.
*** Warning *** Insufficient front light error occurred. The lamp and/or scanning sensor need to be replaced.	It is time to replace the lamp and scanning sensor (front). <ul style="list-style-type: none"> • Contact Technical Support.
*** Warning *** Insufficient back light error occurred. The lamp and/or scanning sensor need to be replaced	It is time to replace the lamp and scanning sensor (back). <ul style="list-style-type: none"> • Contact Technical Support.

Error code and message	Possible Cause/Remedy
<p>*** Warning *** The front reference plate may need to be cleaned. Please clean the front reference plate</p>	<p>The upper background bar is dirty.</p> <ul style="list-style-type: none"> • Clean the upper background bar. See <i>Chapter 6, Maintenance</i> for cleaning procedures.
<p>*** Warning *** The back reference plate may need to be cleaned. Please clean the back reference plate.</p>	<p>The lower background bar is dirty. Clean the lower background bar. See <i>Chapter 6, Maintenance</i> for cleaning procedures.</p>
<p>Scanner is not connected.</p>	<ul style="list-style-type: none"> • If the scanner is not connected, connect the scanner to the computer, turn on the scanner and restart the computer. • If the scanner is not turned on, turn the scanner on and then restart the computer. • If the computer was turned on before the scanner was ready, restart the computer.

Scanner LED status

The color of the LED indicates the scanner status.

LED	Status
Steady green	Ready to scan or scanning is in process.
Flashing green	Sleep mode.
Flashing green/orange	Multifeed Ignore function is set.
Steady orange	The rollers need to be cleaned or replaced. Scanning can continue.
Flashing orange	Initializing or Sleep mode with warning. Check the status of the scanner using the User Utility.
Red	An error occurred. Check the status of the scanner using the User Utility.

Contacting Service

1. Visit www.kodakalaris.com/go/dicontacts to obtain the most current phone number for your country.
2. When calling, please have the following information ready:
 - A description of your problem.
 - The scanner model and serial number.
 - Computer configuration.
 - Software application you are using.

Appendix A Specifications

Contents	Specifications	A-1
	System requirements	A-2
	Space requirements	A-3

Feature	Specification	
Scanning mode	Simplex and Duplex	
Scanning method	CIS. LED lamps.	
Scanning speed 200 dpi, lettersize, landscape	Black and white and color: Simplex: 95 ppm (pages per minute) Duplex; 190 ipm (images per minute) NOTE: The scanning speeds indicated were developed in a test environment. Actual speeds will vary depending on the computer memory, operating system and the scanning or document management software application.	
Resolution (flatbed or ADF)	Black and white/Grayscale (with VRS): 100, 150, 200, 240, 300, 400, 600 dpi Color (with VRS): 100, 150, 200, 240, 300, 400 dpi Optical: 600 dpi	
Output options	Black and White, Grayscale (8-bit) and Color (24-bit)	
Image enhancement	Auto cropping, deskew, auto brightness, contrast control, auto color detect, auto rotation, blank page deletion and bar code recognition and advanced clarity.	
Document size	Flatbed: 11.7 x 17 in. (297 x 432 mm) ADF: approximately 1.9 x 2.8 in. (48 x 70 mm) to 11.9 x 100 in. (302 x 2540 mm) NOTE: For scanning paper longer than 14 inches (356 mm) legal size, a resolution of less than 300 dpi and single-sheet feeding is recommended.	
Paper thickness	2.0 to 5.9 mils (0.05 to 0.15 mm) NOTE: 1 mil = 1/1000 in.	
Paper weight (ADF)	10.6 to 34 lbs. (40 g/m ² to 127 g/m ²)	
Feeder capacity	200 sheets (17-lb./64 g/m ²) paper	
Scanner dimensions (unpacked)	30 x 20 x 11.4 in (76 x 51 x 29 cm) When the document cover is open, height is 22 in. (56 cm)	
Scanner weight (unpacked)	64 lbs (29 kg)	
Interface	USB 2.0 enhanced (cable included)	
Power requirements	AC 100-120 V, 50/60 Hz, 1.2 A	AC 220-240 V, 50-60 Hz, 0.6A
Power consumption Maximum (scanning)	< 90 W	< 80 W
Minimum (standby)	< 27 W	< 27 W
Sleep mode	<1.4 W	< 1.4 W

Feature	Specification
Environment Operating Temperature and Humidity	59° to 95°F (15°C to 35°C), 20 to 80% RH non-condensing
Storage Temperature and Humidity	32° to 104°F (0°C to 40°C), 30 to 80% RH
Daily Duty Cycle	15,000 pages
Additional features	End User Replaceable Feeder Rollers, Electronic Color Dropout (Red, Green, Blue), Switchable Background, Ultrasonic Multifeed, Scan Time Bar Code Recognition
Additional contents	Power Cord, USB Cable 2.0, Roller Cleaning Kit, CD-ROM (User's Guide, VRS Professional, User Utility Software), Printed Documents (Quick Installation Checklist)
Bundled software	Kofax VCDemo, Kofax Scan Demo Software
Imprinter options Number of characters	Pre-scan, front page VCDemo, 62 characters, ISIS characters NOTE: The number of characters will vary according to the scanning application.

System requirements

Following is the minimum recommended system configuration to run *Kodak Trüper 3210* and *3610* Scanners:

Minimum Requirements

- Pentium 4, 1.4 GHz processor
- 256 MB RAM
- Hard drive with 300 MB free disk space for installation
- Monitor resolution: 800 x 600
- CD ROM drive
- Microsoft Internet Explorer 5.01 (or later)

Recommended Requirements

- Intel Core 2 Duo/AMD Athlon 64 X2
- Memory: 2 GB
- Hard Disk: 250 GB (7200 rpm)
- Monitor resolution: 1024 x 768
- CD ROM drive
- Microsoft Internet Explorer 6 (or later)

Operating system

- Microsoft Windows 7
- Microsoft Windows 2000
- Microsoft Windows XP Professional (32-bit)
- Microsoft Windows Vista
- Microsoft Windows 8/8.1
- Microsoft Windows 10

Display: Resolution 1024 x 768 or more; 65,536 colors or more

Interface: USB 2.0 (enhanced)

NOTES:

- Do not connect the scanner to a USB hub.
- There must be 1 GB or more of free space on the hard drive.
- Depending on the computer system and the scanning application or document management software used, you may not be able to scan a large color image in high resolution.

Space requirements

Following are the minimum space requirements that are recommended to open and maintain the scanner. The recommended clearance of the top and sides of the scanner will ensure that there is proper ventilation and provide the necessary area for scanner maintenance.

- **Top** clearance necessary to open the document cover:
27.6 in. (700 mm)
- **Sides:** 7.9 in. (200 mm)
- **Front** clearance necessary to pull the exit stopped forward:
11.8 in. (300 mm)
- **Rear** clearance necessary to remove or install the computer interface board: 13.8 in. (350 mm)

Appendix B Installing and Using the Imprinter

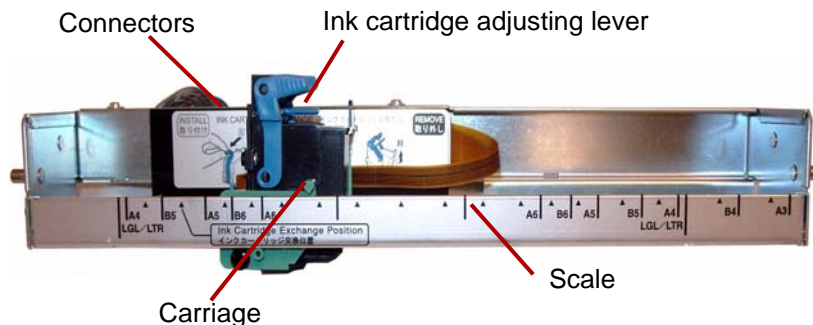
Contents

Imprinter components	B-1
Installing the imprinter	B-1
Ink cartridge installation and print position	B-3
Installing the ink cartridge	B-3
Adjusting the print position	B-4
Print position chart	B-5
Cleaning the ink cartridge	B-6
Cleaning the print head automatically	B-6
Cleaning the print head manually	B-6
Removing the ink cartridge	B-6
Ink cartridge specifications	B-7
Setting up the print string	B-7

This appendix provides procedures for installing and using the optional pre-scan imprinter and how to install and replace ink cartridges. For information on ordering supplies and accessories, see the section entitled, “Supplies and consumables” in *Chapter 6, Maintenance*.

Imprinter components

Following are the components of the imprinter.

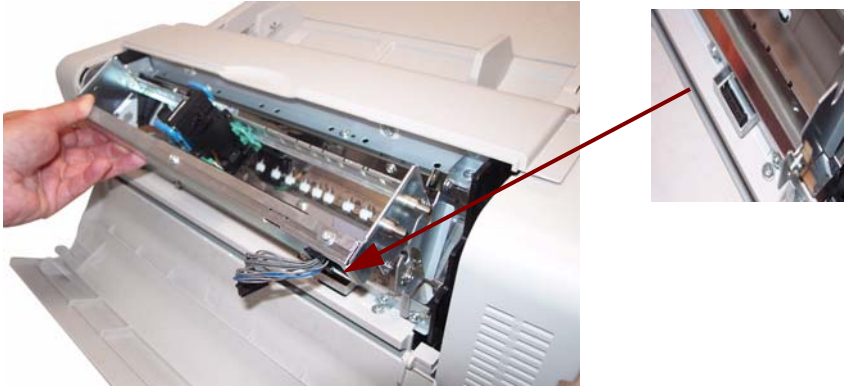


Installing the imprinter

1. Turn the scanner off.
2. Open the imprinter door.



3. Connect the imprinter cable to the connector on the scanner.

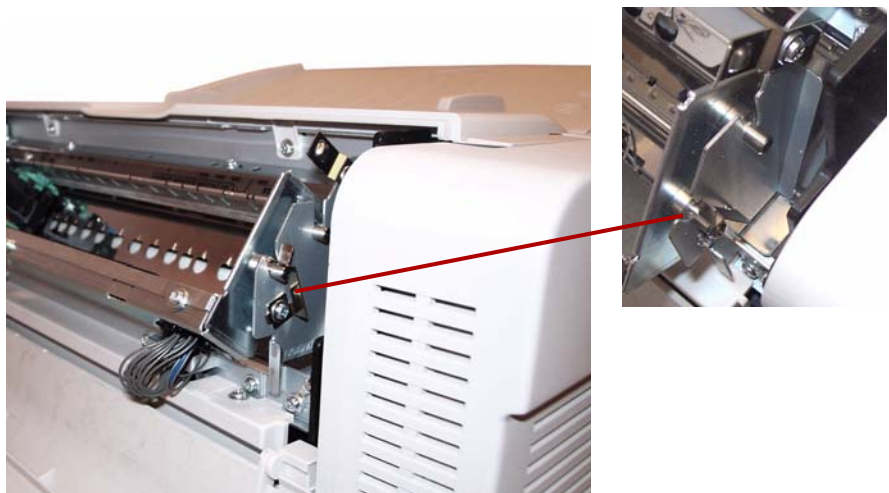


NOTE: Before you insert the connector, be sure to match the rib on the imprinter cable connector with the slot on the scanner connector.

4. Insert the upper pins on the imprinter unit into the guides located on the bracket. Match the channels in the pins with the guides.



5. Insert the lower pins into the guides located on the bracket. Match the channels in the pins with the guides. Gently insert the pins until they are locked in place by the springs.



6. Gently close the imprinter door.

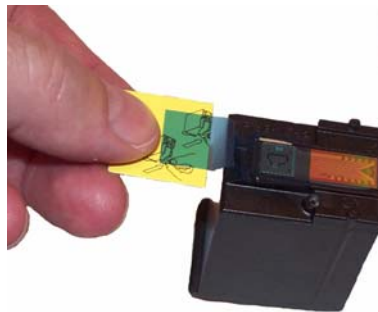
Ink cartridge installation and printing position

Review the precautions below before installing the ink cartridge:

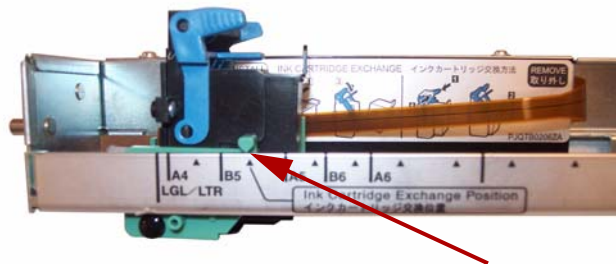
- Do not touch the print head with your hands or with a dirty object.
- If the date marked on the ink cartridge box has expired, or if the ink cartridge is used six months after unpacking the unit, the print quality may be affected.
- Be sure that the storage temperature is between 32°F and 104°F (0°C and 40°C).
- Store the ink cartridge away from direct sunlight.
- Do not clean the ink cartridge with alcohol.
- Do not let the ink come in contact with your skin.
- If the ink comes into contact with eyes, rinse the area completely with fresh water. If irritation or pain remains after rinsing, consult a doctor immediately.
- Do not dispose of the ink cartridge in fire.

Installing the ink cartridge

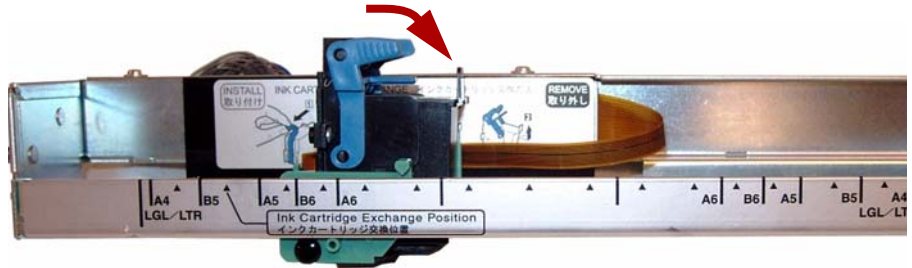
1. Remove the protective tape from the ink cartridge.



2. Move the carriage on the imprinter unit to the Ink Cartridge Exchange Position.



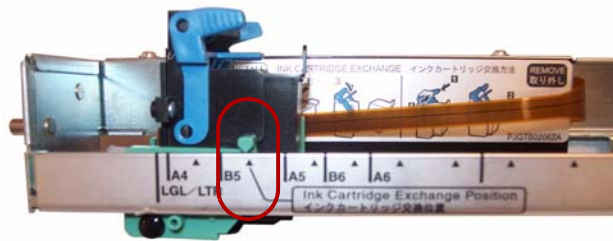
3. Insert the ink cartridge into the carriage and lock the cartridge adjusting lever.



Adjusting the printing position

To add an imprint to the page that will appear on the scanned image, adjust the position of the carriage according to the size of the documents you want to scan. Move the carriage to align the tab on carriage with one of the marks that appears on the scale.

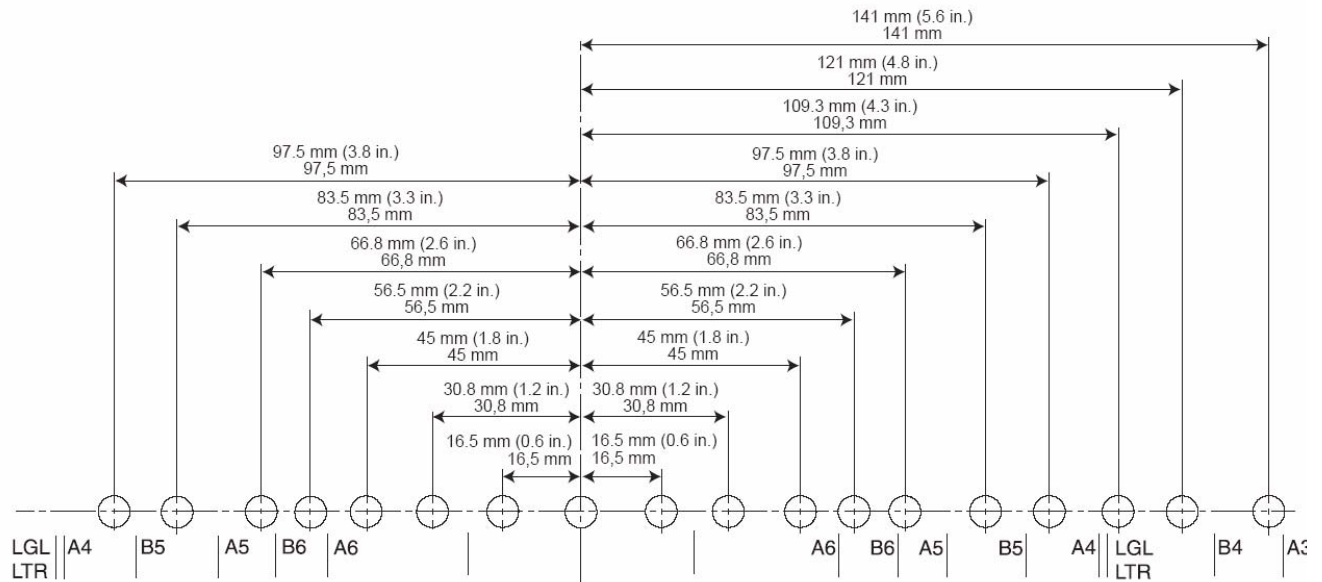
- For the imprint to appear on the right side of the page, move the carriage to the right side of the scale.
- For the imprint to appear on the left side of the page, move the carriage to the left side of the scale.



NOTE: The tab on the printer carriage must be aligned with one of the marks on the scale. If the carriage is not properly aligned, the imprinter will not print.

Printing position chart

This chart shows the position of the imprint according to the document size selected when adjusting the printer position.



To set other printing parameters, see the instructions for your scanning application or document management software.

NOTE: With certain types of paper, the ink from the imprinter may stain the inside of the scanner. For example, ink may stain the scanner rollers. If this occurs, clean the areas by using the roller cleaning paper.

Cleaning the ink cartridge

Cleaning the print head automatically

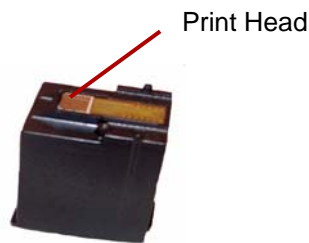


Cleaning the print head manually

If the head of the ink cartridge is dirty or if the ink cartridge has not been used for a long period of time, it may not print properly.

1. Click the **User Utility** icon to open the User Utility.
2. Click **Clean Imprinter**. This option only improves the print quality. *This option is only available if the imprinter is installed.*

1. Remove the ink cartridge as described in the next section.
2. Use a moistened tissue paper to gently wipe and clean the print head.



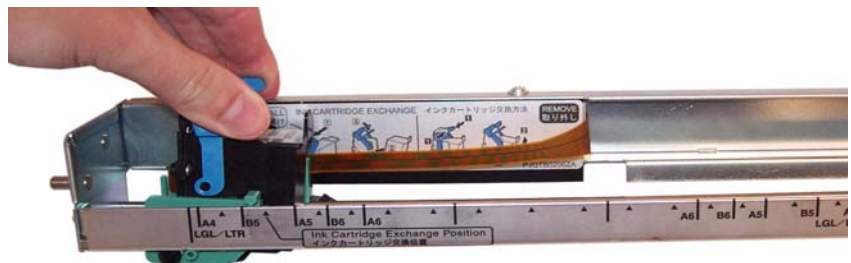
CAUTION: Do not use any material that contains alcohol or the roller cleaning paper to clean the print head.

Removing the ink cartridge

1. Move the carriage on the imprinter unit to the Ink Cartridge Exchange Position.



2. Pinch the cartridge adjusting lever and lift the cartridge out of position.



Ink cartridge disposal: Consult the Hewlett-Packard website for recycling printing supplies or disposing of the ink cartridges according to local regulations.

Ink cartridge specifications

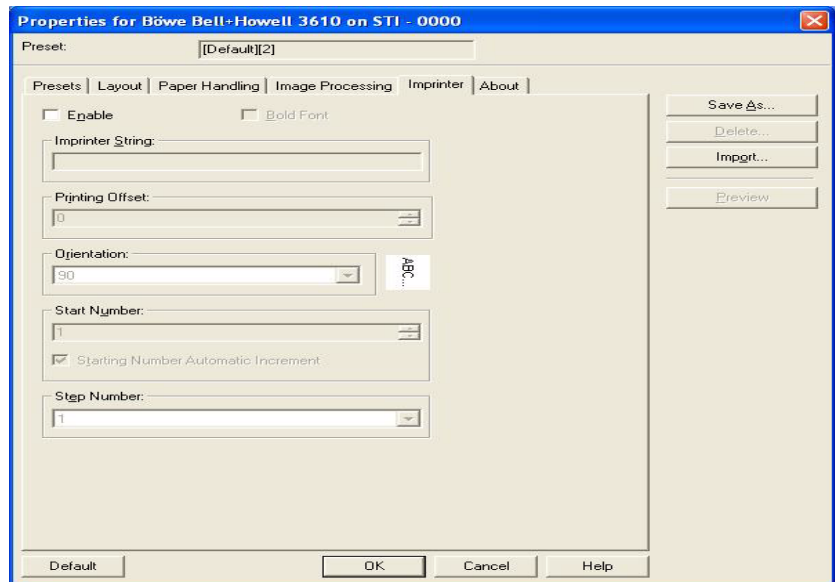
The optional pre-scan imprinter unit and replacement ink cartridges are available from resellers and web merchants. See the section entitled, “Supplies and consumables” in *Chapter 6, Maintenance*.

Ink cartridge life	Approximately 4,000,000 characters (standard font) Approximately 2,000,000 characters (bold font)
Number of characters	VCDemo 62 characters. <i>The numbers of characters will vary according to the application.</i>
Nozzles	12
Unusable documents	Plastic film or coated paper should not be used with the imprinter
Storage environment	Temperature: 32°F to 104°F (0°C to 40°C) Humidity: 10% to 80% RH
Operating environment	Temperature: 59°F to 86°F (15°C to 30°C) Humidity: 30% to 80% RH

Setting up the print string

The pre-scan imprinter prints on the front sides of documents before they are scanned. The printed results are reflected on the scanned images.

1. To set the imprinter settings, click **Imprinter**.



The Imprinter Settings dialog box will be displayed.



2. Click **Enable**.
3. If you want bold type, click **Bold Font**.
4. In the *Imprinter String* field, type in the character string to be printed. Up to 72 characters can be printed.

The symbols and alphanumeric characters in the following table can be printed.

SP	!	'	#	\$	%	&	'	()	=		,	-	/	0	1	2	3	4	5	6	7	8
9	:	<	=	>	?	@	A	B	C	D	E	F	G	H	I	J	K	L	M	N	O	P	Q
R	S	T	U	V	W	X	Y	Z	[\]	^	a	b	c	d	e	f	g	h	i	j	k
l	m	n	o	p	q	r	s	t	u	v	w	x	y	z	{		}						

In addition, other information such as the date and time can be specified. The following special codes can be used to print dynamic text:

Incremental counter: [%0][x]#

The brackets refer to optional parameters.

'x' is a digit and represents the number of digits to use in the counter.

'0' will left-fill numbers with '0' instead of spaces. See the following examples:

- # "sssss1" (s = space)
- %0# "000001"
- %3# "ss1" (s = space)
- %05# "00001"

Date: %xd

'x' is a digit from 1 to 4 and specifies the date.

- %1d YY/MM/DD "71/12/19"
- %2d YYYY/MM/DD "1971/12/19"
- %3d MM/DD/YY "12/19/71"
- %4d DD Abbreviated Month, YYYY "19Dec., 1971"

Time: %xt

'x' is 1 or 2 and specifies the time.

- %1t HH/MM "04:56"
- %2t HH:MM:SS "4:56:23"

5. Type in the printing offset in the *Printing Offset* field. A 10 mm offset is always added to this value.
Unit: 2.38 mm per increment (printing orientation: 90, 270°)
1: 12.38 mm
2: 14.76 mm
Unit: 3.44 mm per increment (printing orientation: 00, 180°)
1: 13.44 mm
2: 16.88 mm
6. In the *Start Number* field, type in the default value of the counter specified by the imprinter string.
7. In the *Step Number* field, type in the step number of the counter specified by the imprinter string.
8. Select the printing orientation from the *Orientation* drop-down list.
9. If desired, check the **Starting Number Automatic Increment** checkbox to automatically increment the number at the start of scanning plus the number of pages scanned x the step number, upon completion of scanning.
10. Click **OK** when finished.

Appendix C Adding Memory

The scanner includes 64 MB of base memory. Some scanning work may require additional memory depending on variables such as the size of the documents to be scanned and the desired image resolution. For example, two-sided scanning of larger document sizes such as A3, or color scanning at a resolution of 600 dpi may require additional memory.

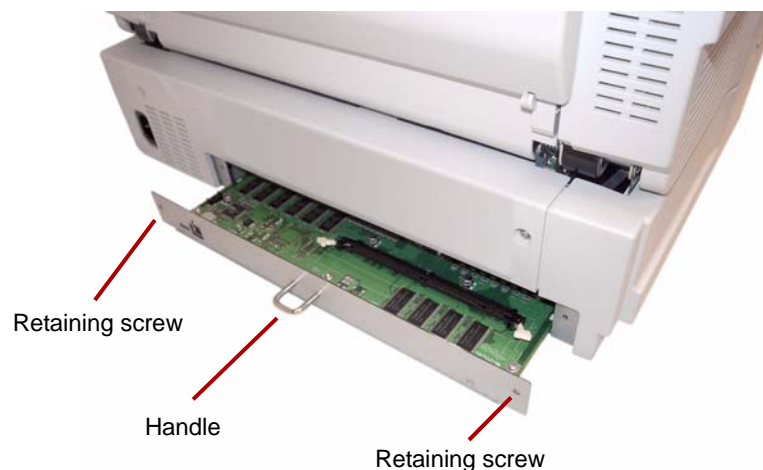
If you need additional memory, you will need to purchase the Memory Upgrade Kit. See the section entitled, “Supplies and consumables” in *Chapter 6, Maintenance* for more information.

NOTE: Only people who are familiar with installing memory modules, i.e., memory on a PC, should install this upgrade kit. If you are uncomfortable installing memory modules, contact your service provider or system administrator.

CAUTION: This kit contains parts and assemblies susceptible to damage by electrostatic discharge (ESD).

Installing the DIMM module

1. Turn the scanner off.
2. Disconnect the power cord from the electrical outlet and disconnect the computer interface cable.
3. Remove the two retaining screws from the interface board and put them aside.



4. Pull the handle to remove the interface board.

CAUTION: Do not place your hand inside the unit.

5. Insert the DIMM module into the module connector on the interface board at an angle.
6. Push the module in until it clicks into place and the white tabs on the module connector close around the DIMM module.



7. Be sure the indent on the DIMM module is to the left side when you insert the DIMM module. If the indent is not in this position, the DIMM module will not be inserted properly.

NOTE: If you need to remove the DIMM module, pull the white tabs at both sides of the module connector to release the DIMM module, then carefully pull it out.

8. Slide the interface board back into the unit by guiding the board into place along the rails located inside the scanner.
9. Push the board in firmly until it locks into place.



10. Confirm that the interface board is fully inserted and firmly locked in place, then secure the interface board with the two retaining screws.

Automatic Document Feed (ADF) mode — the scanner mode in which the documents are automatically fed, rather than manually fed, into the document feeder.

Crop (auto crop) — this software option automatically crops every page to its original size by looking for page or document borders.

Deskew — the process of electronically straightening an image after it has been scanned. This can be done through software or through firmware on the scanner.

Double Feed — occurs when more than one document is fed through the feeder at one time.

Duplex scanner — a scanner capable of scanning both sides of a document in a single pass through the scanner.

Error message — a message displayed in the User Utility dialog box, or an indicator light on the LED status indicator. Error messages or indicators appear whenever the scanner determines that a problem exists.

Flatbed sheet — adjustable component used in conjunction with the reference plates to change the background color of the scanned documents.

Imprinter — optional accessory that allows for front page pre-scan imprinting of a string of alphanumeric characters on documents that are fed into the scanner transport.

Manual mode — the scanner mode in which documents are manually fed by the operator, rather than automatically fed into the feeder.

Multi color dropout — allows you to dropout up to 6 colors from a color document when scanning in black and white mode.

Paper path — the curved path taken by a document as it passes through the scanner.

Paper transport — the mechanical system for moving a document through the scanner.

Resolution — a measurement of the ability of a scanner to reproduce small objects. The higher the resolution, the smaller the object the scanner can reproduce. Resolution is measured in dots per inch (dpi).

RGB — three components of color: Red, Green, Blue.

Simplex scanner — a scanner designed to scan one side of a document as it passes through the scanner.

Single color dropout — allows you to dropout one color (red, green or blue) from a color document when scanning in black and white mode.

Skew — the result of feeding a document at an angle. It appears crooked or misaligned on the display and also looks this way when printed. To minimize skew, guide the document against the left document feed guide.

Transport system. See *Paper transport*.

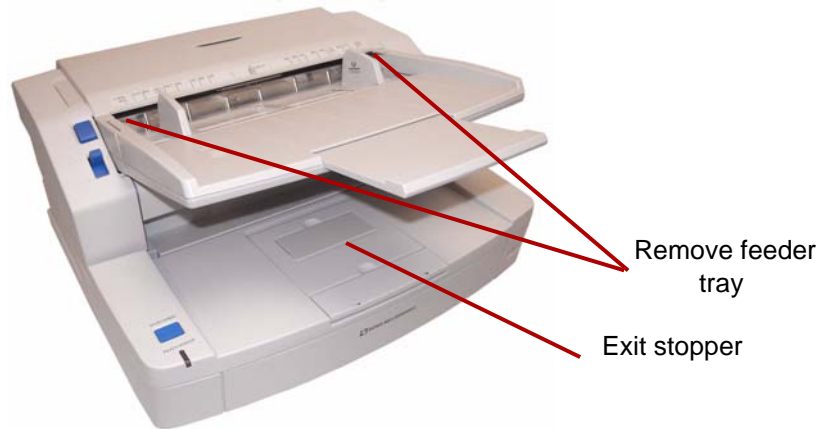
USB (Universal Serial Bus) — a data transmission system that operates between the scanner and the host computer system.

VRS (VirtualReScan) — VRS is an electronic check-point for scanned images. As images pass through the scanner, VRS performs a multi-point inspection of each document. VRS automatically checks and adjusts for alignment (skew), brightness, contrast and image clarity.

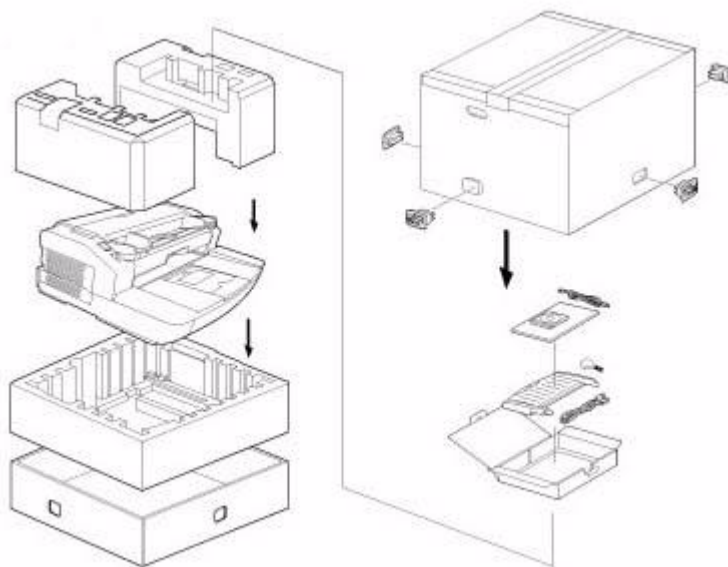
Appendix E Repacking the Scanner

If you need to transport or ship the scanner, follow these repacking instructions.

- Use the original scanner carton and packing materials. You will also need shipping tape and scissors.
 - Improper repacking of the scanner may cause damage during handling and shipment.
 - The scanner should always be handled in the horizontal position.
1. Turn the scanner off. Disconnect the scanner from the electrical outlet and disconnect the interface cable.
 2. Remove the feeder tray and fold down the exit stopper. Wrap the tray with protective sheets of plastic. Seal the plastic with tape.



3. Pack the scanner in the original carton and packing materials.



Appendix F Warranty - US and Canada only

Congratulations on the purchase of a *Kodak Scanner*. *Kodak Scanners* are designed to provide end users with the highest performance and reliability. All *Kodak Scanners* are covered by the following Limited Warranty.

Limited Warranty for *Kodak Scanners*

Kodak Alaris Inc. provides the following Limited Warranty on *Kodak Scanners* (excluding spare parts and consumables) distributed by Kodak or through Kodak's authorized distribution channels:

Kodak warrants that a *Kodak Scanner*, from the time of sale through the Limited Warranty period applicable to the Product, will be free of defects in materials or workmanship and will conform to the performance specifications applicable for the particular *Kodak Scanner*.

All *Kodak Scanners* are subject to the Warranty Exclusions described below. A *Kodak Scanner* found to be defective or which does not conform to the product specifications will be repaired or replaced with new or refurbished product at Kodak's option.

Purchasers may determine the applicable Limited Warranty period for the *Kodak Scanners* purchased by calling (800) 822-1414, or by visiting www.kodakalaris.com/go/disupport or by reviewing the Limited Warranty Summary Card enclosed with the *Kodak Scanner*.

Proof of purchase is required to demonstrate eligibility for warranty service.

Warranty exclusions

Kodak's Limited Warranty does not apply to a *Kodak Scanner* that has been subjected to physical damage after purchase, caused, for example, by casualty, accident, acts of God or transportation, including (a) by a failure to properly package and ship the Scanner back to Kodak for warranty service in accordance with Kodak's then current Packaging and Shipping Guidelines, including failure to replace the shipping restraint prior to shipping, or by a failure to remove the shipping restraint prior to use; (b) resulting from the user's installation, system integration, programming, re-installation of user operating systems or applications software, systems engineering, relocation, reconstruction of data, or removal of the product or any component (including breakage of a connector, cover, glass, pins, or seal); (c) from service, modification or repair not performed by Kodak or a service provider authorized by Kodak or by tampering, use of counterfeit or other non-Kodak components, assemblies, accessories, or modules; (d) by misuse, unreasonable handling or maintenance, mistreatment, operator error, failure to provide proper supervision or maintenance, including use of cleaning products or other accessories not approved by Kodak or use in contravention of recommended procedures or specifications; (e) by environmental conditions (such as excessive heat or other unsuitable physical operating environment), corrosion, staining, electrical work external to the product or failure to provide electro-static discharge (ESD) protection; (f) by failure to install firmware updates or releases available for the product and (g) by such other supplemental exclusions published from time to time online at www.kodakalaris.com/go/disupport or by calling (800) 822-1414.

Kodak provides no Limited Warranty for products purchased from countries other than the United States. Purchasers of products from foreign distribution channels must seek warranty coverage, if any, through the original source of purchase.

Kodak provides no Limited Warranty for products that are purchased as part of a third party manufacturer's product, computer system or other electronic device.

Any warranty for these products is provided by the OEM (Original Equipment Manufacturer) as part of that manufacturer's product or system.

The replacement product assumes the remainder of the Limited Warranty period applicable to the defective product or thirty (30) days, whichever is longer.

Installation Warning and Disclaimer

KODAK WILL NOT BE RESPONSIBLE FOR ANY CONSEQUENTIAL OR INCIDENTAL DAMAGES RESULTING FROM THE SALE, INSTALLATION, USE, SERVICING OR IMPROPER FUNCTIONING OF THIS PRODUCT, REGARDLESS OF THE CAUSE. SUCH DAMAGES FOR WHICH KODAK WILL NOT BE RESPONSIBLE, INCLUDE, BUT ARE NOT LIMITED TO, LOSS OF REVENUE OR PROFIT, LOSS OF DATA, DOWNTIME COSTS, LOSS OF USE OF THE PRODUCT, COST OF ANY SUBSTITUTE PRODUCT, FACILITIES OR SERVICES OR CLAIMS OF CUSTOMERS FOR SUCH DAMAGES.

If there is any conflict between other sections of this appendix and the Limited Warranty, the terms of the Limited Warranty prevail.

How to obtain Limited Warranty service

Kodak Scanners are supplied with information on unpacking, setup, installation and operation. Careful reading of the User's Guide will answer most of the technical questions the end user might have regarding proper installation, operation and maintenance of the product. However, should additional technical support be required, you may visit our website at: www.kodakalaris.com/go/disupport or contact:

Kodak's Response Center: **(800) 822-1414**

The Response Center is available Monday – Friday (excluding Kodak holidays) 8 a.m. to 5 p.m. local time.

Before placing the call, the eligible purchaser should have the *Kodak* Scanner model number, part number, serial number and proof of purchase available. The eligible purchaser should also be prepared to provide a description of the problem.

Response Center personnel will assist the end user in resolving the problem over the phone. The end user may be asked to run some simple, self-diagnostic tests and report the resulting status and error code messages. This will assist the Response Center in determining if the problem is the *Kodak* Scanner or another component and if the problem can be resolved over the phone. If the Response Center determines a hardware problem exists that is covered either under the Limited Warranty or a purchased Maintenance Agreement, a Return Material Authorization Number (RMA) will be assigned as needed, a service request will be initiated and repair or replacement procedures will follow.

Packaging and shipping guidelines

Purchaser must ship all warranty returns in a method that guarantees full protection of the product from shipping damage. Failure to do so will void the *Kodak* Scanner warranty. Kodak advises the purchaser to keep the original box and packing materials for storing or shipping. Kodak is not responsible for issues related to shipping damage. The purchaser must return only the *Kodak* Scanner. Prior to shipment, purchaser must remove and retain all "add-on" items, (i.e. adapters, cables, software, manuals, etc.). Kodak accepts no responsibility for these items and they will not be returned with the repaired or replacement *Kodak* Scanner. All products should be returned to Kodak in the original shipping container, or an authorized packaging box for the units being returned. Purchaser must install the shipping restraint before the *Kodak* Scanner is shipped. When the original packaging is not available, contact Kodak's Response Center at (800) 822-1414 for part numbers and replacement packaging ordering information.

Return procedure

Eligible purchasers seeking services for *Kodak* Scanners covered under this Limited Warranty must obtain a Return Material Authorization number ("RMA") by calling (800) 822-1414 and within ten (10) business days from the date of issuance of the RMA must return the *Kodak* Scanner to the address designated in the RMA at the end user's own expense and risk, in compliance with Kodak's current Packaging and Shipping Guidelines.

Any defective products or parts replaced by Kodak become the property of Kodak.

Customer responsibility

BY REQUESTING SERVICE, THE ELIGIBLE PURCHASER ACKNOWLEDGES THE TERMS OF THE LIMITED WARRANTY, INCLUDING THE DISCLAIMER AND LIMITATION OF LIABILITY PROVISIONS. PRIOR TO SEEKING SERVICE, THE END USER MUST BACK-UP ANY DATA OR FILES THAT MAY BECOME DAMAGED OR LOST. KODAK IS, WITHOUT LIMITATION, NOT RESPONSIBLE FOR LOST OR DAMAGED DATA OR FILES.

Warranty Service descriptions

Kodak offers a range of service programs to support its Limited Warranty and to assist with the use and care of the *Kodak* Scanner ("Service Methods"). A *Kodak* Scanner represents an important investment. *Kodak* Scanners provide the productivity needed to stay competitive. The sudden loss of this productivity, even temporarily, could seriously affect the ability to meet commitments. Downtime can be very expensive, not just in the cost of the repair but also in time lost. To help alleviate these problems, Kodak may use one of the service methods listed below, depending upon product type, in providing service under its Limited Warranty.

Included with selected *Kodak* Scanners is a Limited Warranty Registration card and a Limited Warranty Summary card. The Limited Warranty Summary card is specific by model. The Limited Warranty Summary card contains important warranty information, including the model number and the Limited Warranty. Refer to the Limited Warranty Summary card to determine the available Service Methods applicable to the particular *Kodak* Scanner.

If the Limited Warranty Registration card or Limited Warranty Summary card cannot be located, additional information may be obtained about the product, including updated warranty and service program information and restrictions, online at www.kodakalaris.com/go/disupport or by phone at (800) 822-1414.

To avoid service delays, Kodak urges end users to complete and return the enclosed Limited Warranty Registration Card at the first opportunity. If you cannot locate the Limited Warranty Registration card, you may register online at www.kodakalaris.com/go/disupport or by phone at (800) 822-1414.

Kodak also provides a variety of service programs that may be purchased to assist with the use and care of the *Kodak* Scanner. Kodak is committed to providing its customers with quality, performance, reliability and service under the Limited Warranty.

On-site service

For the selected *Kodak* Scanner, and after the Response Center verifies a hardware problem, a service call will be opened and logged. An *Kodak* Field Engineer will be dispatched to the product location to perform repair service if the product is located within the contiguous forty-eight (48) United States, in certain areas of Alaska and Hawaii, and if there are no security, safety or physical requirements that would restrict the Field Engineer's access to the scanner. For additional information on service areas, visit our website at: www.kodakalaris.com/go/docimaging. On-Site Service will be provided between the hours of 8 a.m. and 5 p.m. local time, Monday through Friday (excluding *Kodak* holidays).

AUR

AUR may be one of the easiest and most comprehensive service offerings in the industry. In the unlikely event of a product defect, for eligible purchasers of certain *Kodak* Scanners, *Kodak* will replace that product within two business days.

The AUR provides advance replacement on specific failed or broken *Kodak* Scanner. To be eligible to take advantage of the AUR, the eligible purchaser must obtain an RMA number, sign an Advance Replacement Agreement and provide a credit card deposit to secure the replacement product. The RMA number should be kept in the event that the status of the replacement product needs to be checked. The eligible purchaser will be asked for the address where the replacement product is to be shipped. The eligible purchaser will also be faxed packing and shipping instructions for the malfunctioning product. The eligible purchaser will then receive a replacement product within 2 business days after the service call initiation and *Kodak*'s receipt of the signed agreement. The malfunctioning product must be received by *Kodak* within ten (10) days of the end user's receipt of the replacement product or the end user's credit card will be charged the list price of the replacement product. Shipment of replacement Imaging Product will be made at *Kodak*'s expense and choice of freight carrier. Shipments not made under *Kodak*'s directions and choice of freight carrier may void the Limited Warranty.

Before the product is returned to *Kodak*, be sure to remove all options and accessories (which include power cord, documentation, etc.) that are not covered by the Limited Warranty. The box and packaging in which the replacement product was shipped must be used to return the malfunctioning product. If the malfunctioning product is not returned in the box and packaging in which the replacement product was shipped the Limited Warranty may be voided. The Return Material Authorization Number ("RMA") must be clearly marked on the outside of the box to ensure proper receipt and credit of the defective product.

Depot service

If the *Kodak* Scanner is not eligible for Advance Exchange or On-Site Service, an eligible purchaser may utilize our Depot Repair Service. The eligible purchaser will be instructed to ship the product to the nearest authorized Depot Repair Center. Product must be shipped at the eligible purchaser's risk and expense to the repair center. Before the product is returned to the repair center, be sure to remove all options and accessories (which include power cord, documentation, etc.) not covered by the Limited Warranty. All products should be returned to *Kodak* in the original shipping container, or in a recommended packing box. The *Kodak* Scanner must have the shipping restraint installed before it is shipped. When the original packaging is not available, contact *Kodak*'s Response Center at (800) 822-1414, for ordering information. Eligible purchasers seeking services for *Kodak* Scanners must obtain a Return Material Authorization number ("RMA") by calling (800) 822-1414, and within ten (10) business days from the date of issuance of the RMA must return the *Kodak* Scanner to the address designated in the RMA at the end user's own expense and risk. The Return Material Authorization Number ("RMA") must be clearly marked on the outside of the box to ensure proper receipt and credit of the defective product.

Upon receipt of the product, the repair center will repair product within ten (10) business days. The repaired product will be shipped back two-day express mail at no expense to the eligible purchaser.

Important restrictions

Eligibility: The Advance Exchange Program and the Depot Service are available to eligible purchasers in the fifty (50) United States, and On-Site Service is available in the contiguous forty-eight (48) states and in certain areas of Alaska and Hawaii for products purchased from authorized distributors of *Kodak*. The *Kodak* Scanner will be ineligible for any service under warranty if the product falls under any of *Kodak*'s then-current Warranty Exclusions, including a purchaser's failure to return defective products to *Kodak* in compliance with *Kodak*'s then current Packaging and Shipping Guidelines. Persons are only considered "eligible purchasers" or "end users" if they originally purchased the *Kodak* Scanner for their own personal or business use, and not for resale.

Consumables: Consumables are items that wear out under normal use and must be replaced by the end user as needed. Consumables, supplies, other expendable items and those items identified as being the user's responsibility in the User's Guide are not covered under the Limited Warranty.

If any of the above excluded parts or services are required, they may be available through an authorized service provider at their hourly rates and at terms then in effect.

Any defective products or parts replaced by *Kodak* become the property of *Kodak*.

Contacting Kodak

For Information on *Kodak* Scanners:

Website: www.kodakalaris.com/go/docimaging

For U.S. Service, Repair and Technical Assistance by Telephone:

Telephone technical support is available Monday-Friday between the hours of 5 a.m. to 5 p.m., local time, excluding Kodak holidays. Phone: (800) 822-1414

For Technical Documentation and FAQ's available 24 hours a day:

Website: www.kodakalaris.com/go/docimaging

For Service Program Information

Website: www.kodakalaris.com

Phone: (800) 822-1414

