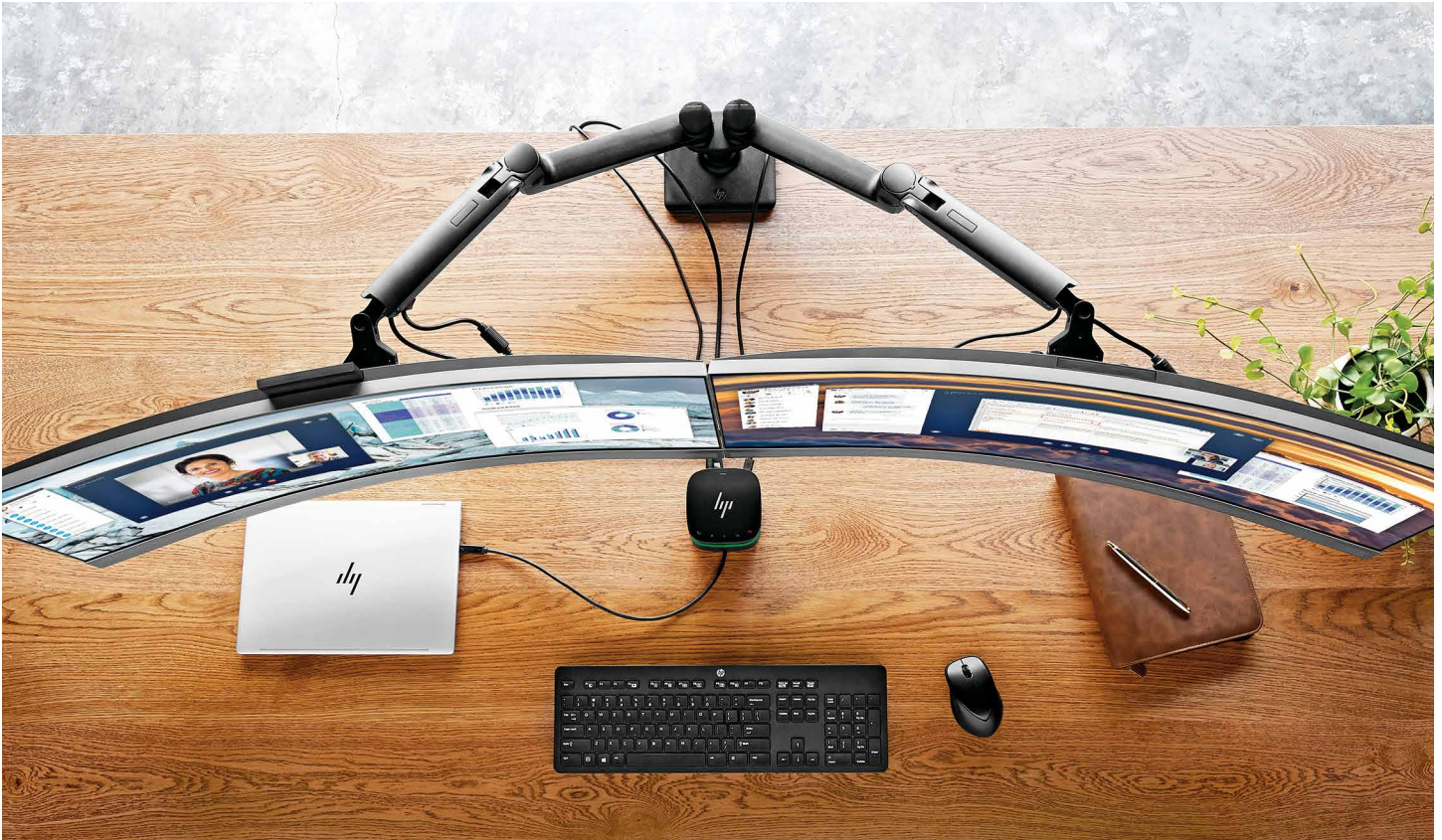




HP DOCK SOLUTIONS



## THE WORKPLACE IS EVOLVING.

---

Say goodbye to the cubicle farm and hello to open, flexible workspaces for an increasingly mobile workforce and all that they bring with them. Today's offices have smaller, shared work areas and more devices per user. Collaboration is on the rise for today's mobile workforce, and happening in more places—meeting rooms, group spaces, public places, and while traveling or at home.

HP's wide array of best-in-class docking solutions are the perfect answer, providing the mobile workforce and their many devices with quick, convenient, and secure access to networks, printers, displays, and other shared resources. And HP docks are an all-important bridge between older devices and emerging standards like USB-C™ and Thunderbolt™.

---





“The dock looks like it is a bit of a design miracle, smaller and more modular than any other designs I have seen.”<sup>1</sup>

—Patrick Moorhead, Forbes



## HP THUNDERBOLT DOCK G2 WITH AUDIO MODULE



1. From the Forbes Contributor Network and not necessarily the opinion of Forbes Media LLC. © 2018, Forbes Media LLC. Used with permission.

## HIGH-PERFORMANCE UNIVERSAL DOCK

One dock does it all with fast connection rates and a modular design to add conferencing and audio. And it works with more than just HP notebooks!<sup>2</sup>



### HP Thunderbolt Dock G2

Built on Thunderbolt™ technology, the HP Thunderbolt Dock G2 has a high-performance and versatile design that works with a wide range of notebooks.<sup>3</sup> Its compatibility spans the HP ProBook 400 G5 series all the way up to the HP EliteBook 1000 series, as well as HP Elite x2s and HP Mobile Workstations. And it doesn't stop there. This little gem even works with non-HP notebooks with Thunderbolt™ and USB-C™ to provide a scalable experience for you and your fleet.<sup>4</sup>

Designed for workspace flexibility and network manageability,<sup>5</sup> the HP Thunderbolt Dock G2 delivers USB-C™ device connectivity<sup>6</sup> and optional integrated audio.<sup>7</sup> Connect a single USB-C™ cable to your notebook to access a wired network, data, video, and charging.<sup>4</sup> Help IT easily secure and remotely manage a wide range of HP notebooks and the dock with advanced network manageability features built in.<sup>8</sup>

#### Product #:

2UK37AA (120W)

2UK38AA (230W)

3TR87AA (combo, 230W, supports both business notebooks and mobile workstations)

This small, sophisticated, high-performance, and modular universal dock is the world's most versatile Thunderbolt™ dock.<sup>2</sup>



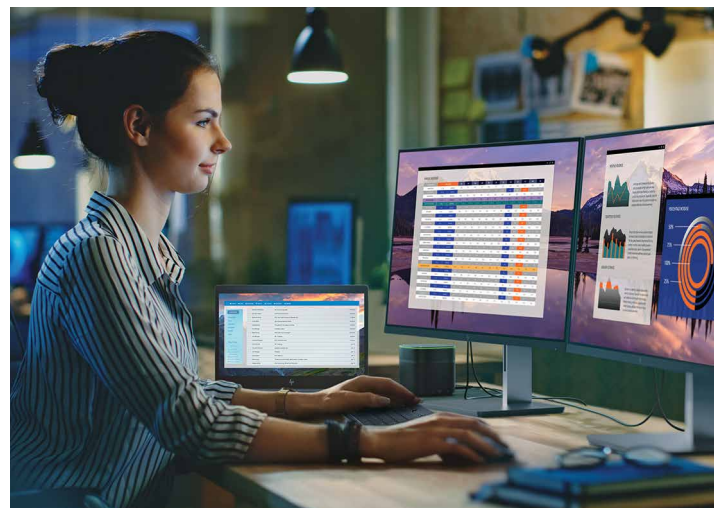
### HP Thunderbolt Dock Audio Module

Take calls in small team rooms and home offices without a headset with the HP Thunderbolt Dock Audio Module,<sup>7,8</sup> which attaches vertically to the HP Thunderbolt Dock G2 with no additional cabling.<sup>9</sup> Experience stereo sound and collaborate easily with built-in HP Noise Cancellation. LEDs confirm successful call connection, and slight button haptics confirm interaction with call controls. Snap the module on top of your dock with a simple connector and secure with a screw for a clean solution with no messy cables.<sup>9</sup>

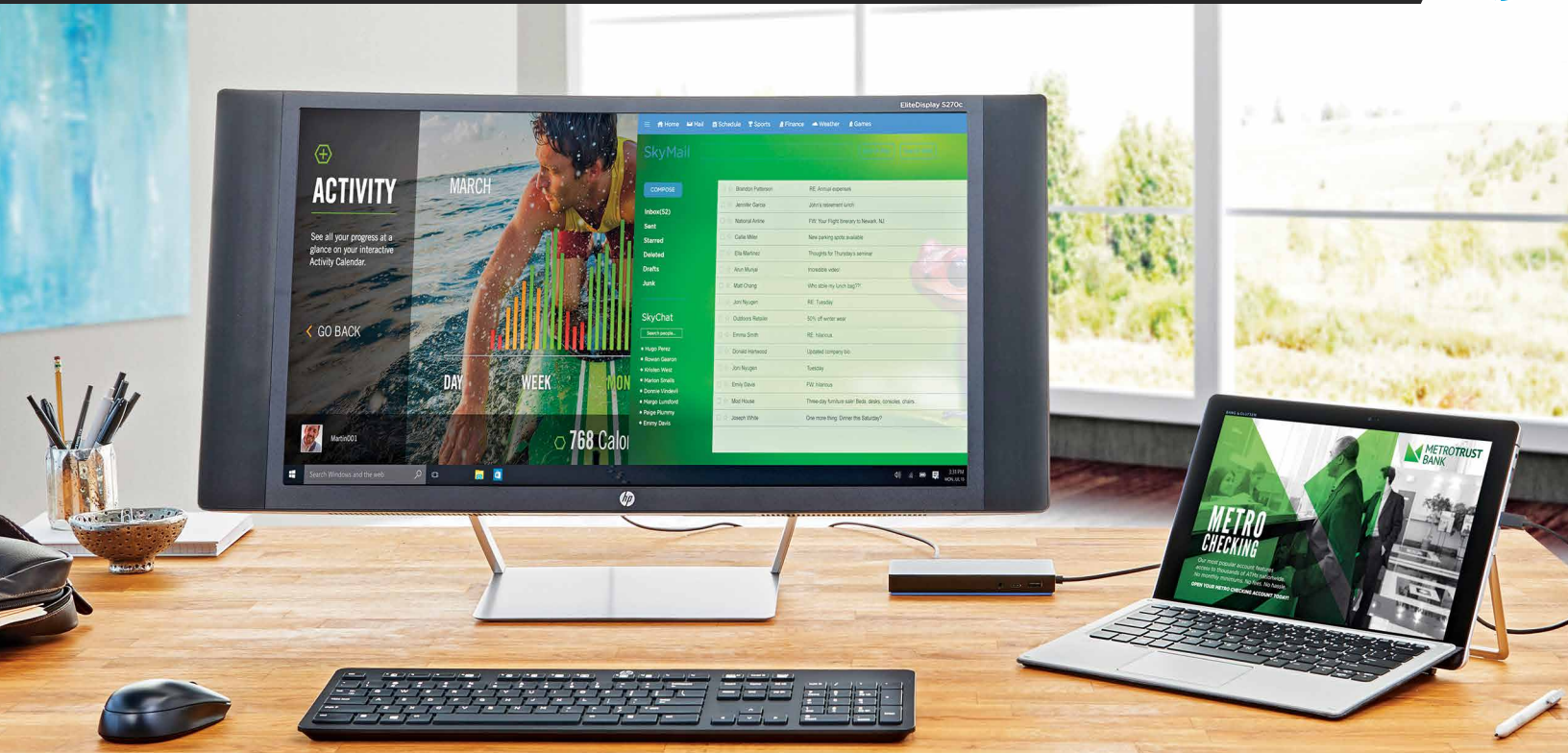
#### Product #:

3AQ21AA (HP Thunderbolt Dock Audio Module)

3YE87AA (HP Thunderbolt Dock 120W G2 w/ Audio, pictured below)



2. Compatible with non-HP platforms if they are designed to USB-C industry standards. Certain features of the dock require HP BIOS support and will not be functional when used with non-HP systems nor Chrome systems: (a) Power button to turn on or wake the system. (b) Wake on LAN from warm and cold dock. (c) Wake on LAN from S4/S5. (d) MAC address pass-through S0, S3, S4, S5, warm, and cold dock. 3. Based on Thunderbolt docks that support USB-C charging, video, and the ability to deliver power to notebooks that require up to 200W power as of January 2018. 4. Notebooks must be able to support USB-C power, video, and Thunderbolt and USB-C industry standards. 5. Advanced manageability features such as WoL and MAC Address Pass-Through in all power states supported only on HP Elite x2 1012 G2, HP Pro x2 612 G2, HP EliteBook 1040 G4, HP EliteBook x360 1020, 1030 G2, 800 G5, 700 G5, 600 G4, 400 G5, and G4 HP Mobile Workstations as of January 17, 2018. 6. Notebooks must be able to support power, video, and USB-C industry standards. 7. HP Thunderbolt Dock Audio Module sold separately and required for audio. 8. Internet access required and sold separately. 9. Dock sold separately.



# POWER AND DATA WITH A SINGLE CABLE CONNECTION

For customers with smaller deployments of mobile professionals or executives needing basic docking



### HP USB-C Dock G4

Maximize productivity in the office with one USB-C™ cable connection to the enterprise-ready HP USB-C Dock G4.<sup>10</sup> It delivers device charging to your HP notebook,<sup>11</sup> supports up to three displays,<sup>12</sup> and enables connectivity to your wired network and accessories.

HP USB-C Dock G4 video: Single 4K @ 60Hz with USB 2.0—only support. Will be supported via F10. BIOS update required. First platform BIOS release targeted for July 2018.

Product #: 3FF69AA



10. Supports multi-function USB-C (video, charging, and USB 3.1) and USB Type-C Thunderbolt-enabled ports. 11. See product QuickSpecs for exact charging capacities. 12. Sold separately. Single display up to 4K (4096 x 2160 @ 60 Hz), dual displays up to 2K (2560 x 1600 @ 60 Hz), or triple displays up to FHD (1920 x 1200 @ 60 Hz). Actual display configuration is subject to your platform's video out capability.





## UNIVERSAL, MULTI-GENERATIONAL DOCKING

For customers needing universal, multi-generational docking deployment

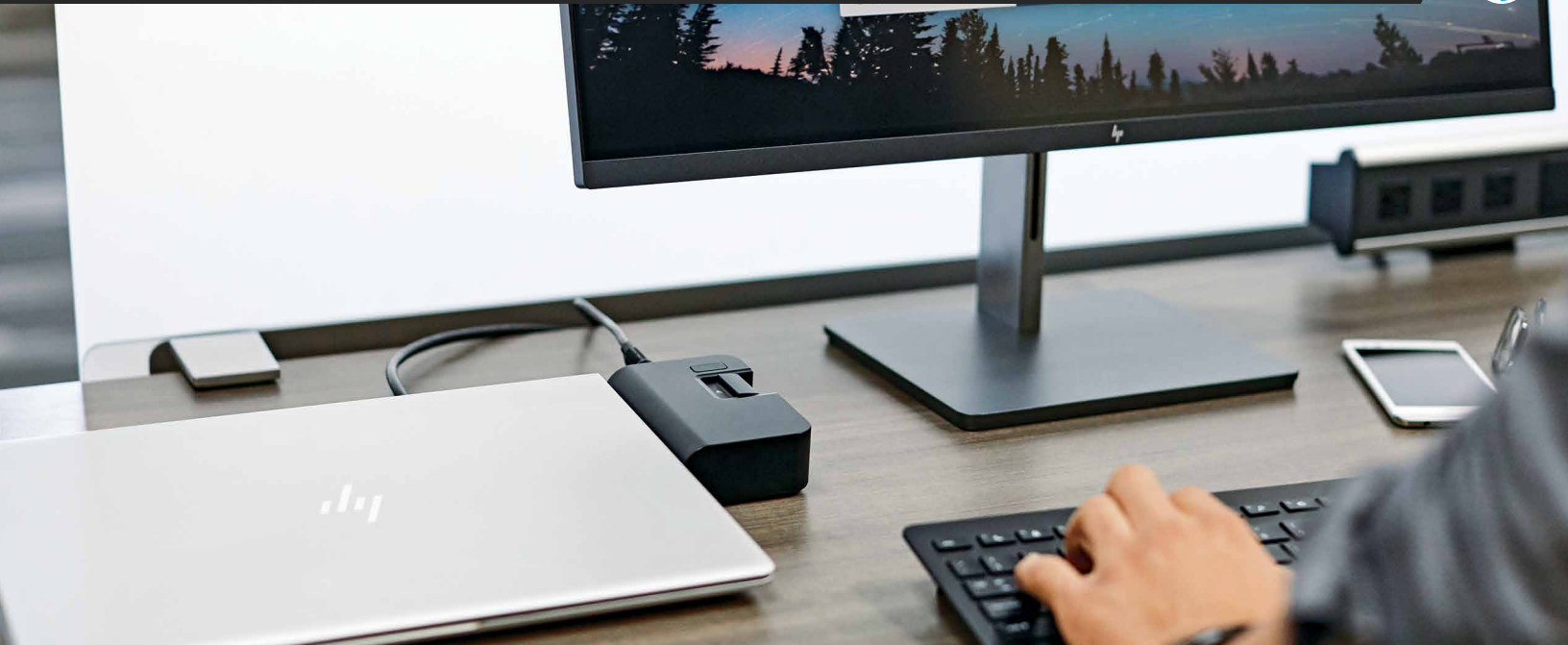


### HP USB-C Universal Dock

Universal enterprise docking for your fixed or shared workspaces. Transform your HP notebook or tablet into a complete desktop experience with the HP USB-C Universal Dock, which delivers USB-C™ charging and connections for your network, dual 4K displays, and accessories with one cable connection.<sup>13</sup> Avoid downtime with up to 60W to charge your connected notebook or tablet through the powered USB-C™ port, or select notebooks through the optional HP 4.5mm and USB Dock Adapter for a tidy workspace with no additional power adapter required.<sup>14,15,16</sup>

**Product #:** 1MK33AA, 2UF95AA (with 4.5mm and USB adapter)

13. See product QuickSpecs for exact charging capacities. Only available with direct USB-C cable connection on the USB-C Universal Dock with 4.5mm adapter. 14. HP 4.5mm and USB Dock Adapter sold separately. 15. Host PC must be designed to support industry standard USB-C. 16. See product QuickSpecs for exact charging capacities. Only available with direct USB-C cable connection on the dock for host PCs that support USB-C charging or through the included HP 4.5mm and USB Dock Adapter.



## SECURE, MANAGEABLE, EASY-TO-USE EXTENSION OF THE NOTEBOOK

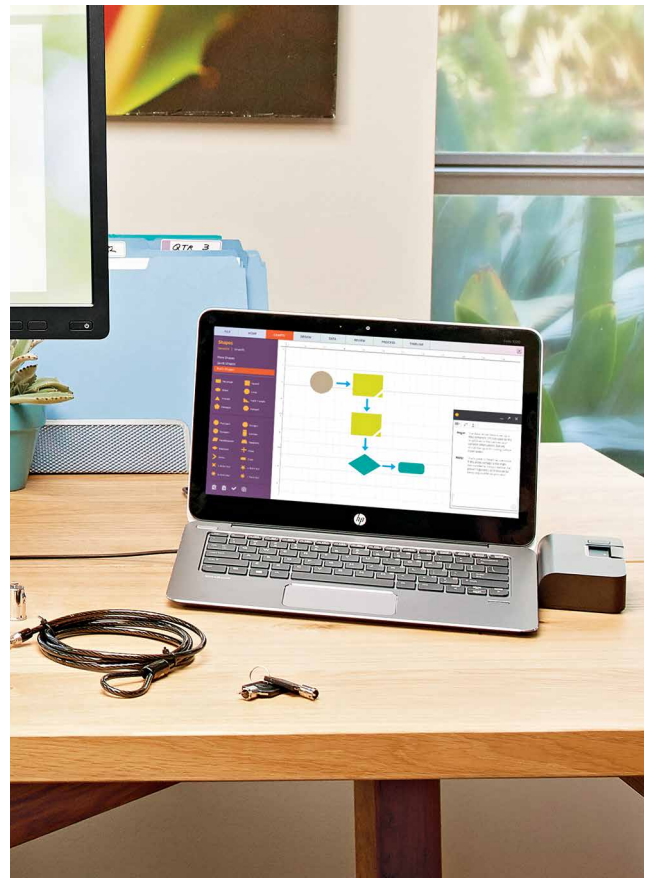
For large, enterprise-class deployments needing high performance and a modern workspace.

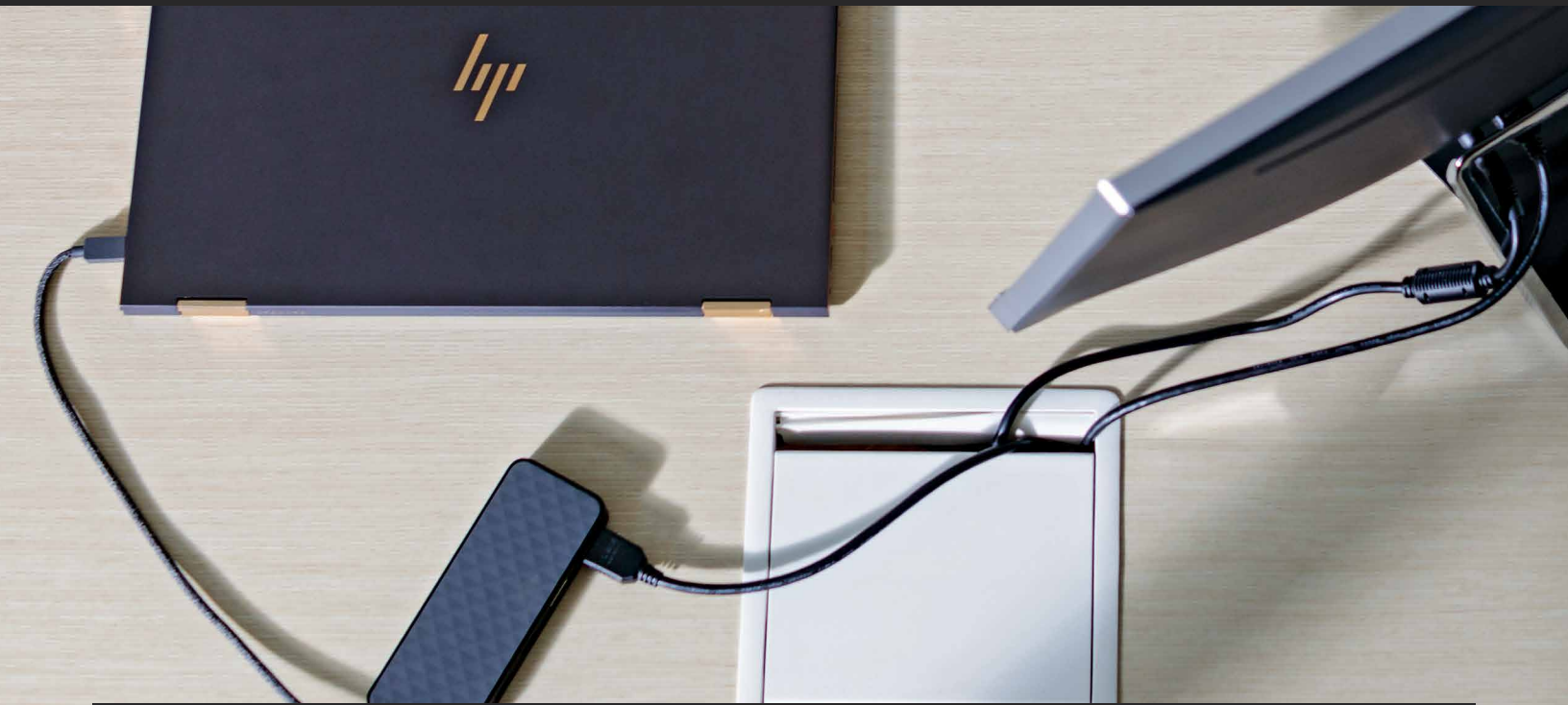


### HP UltraSlim Docking Station

Quickly and easily expand your display, network, and device connectivity to customize an always-ready workspace with the HP UltraSlim Docking Station, a simple one-click, slide-in side dock for select UltraSlim HP EliteBook Notebook PCs.

Product #: D9Y32AA





## SIMPLE DOCK SOLUTIONS FOR CONNECTIVITY AND POWER ON THE GO

HP docks extend device capabilities, amplify use, and simplify deployment. They fit evolving customer needs with multiple use case scenarios for both dedicated and shared workspaces.



### HP USB-C Mini Dock

Be productive on the go with streamlined, pocket-sized port expansion that's fashionable and functional. The HP USB-C Mini Dock has a modern, textured design and packs pass-through charging and data, video, network, and device connectivity into a compact, portable dock.<sup>17,18</sup> Carry the dock by hand with the soft-coated USB-C™ cable that loops and folds neatly into a channel on the bottom of the dock to become a comfortable wrist strap, or pack it to go in your bag alongside your mobile device.

**Product #:** 1PM64AA



### HP USB Travel Dock

Connect to your devices and network in a dongle-free environment with the sleek HP USB Travel Dock, which delivers a range of ports in a highly-portable size that goes where you go.

- **Power requirements:**

Powered from VBUS: 5 Volts/3 Amps

- **Operating systems supported:**

Microsoft Windows 10 (install updated driver), Windows 7, Windows 8.1, Windows Vista, Windows XP

**Product #:** TOK30AA

17. Pass-through charging requires a notebook or tablet USB-C AC adapter. The dock does not include an AC Adapter. 18. Supports DisplayPort Alt Mode (video, charging, and USB 3.1) over the USB-C connector. Also compatible with USB Type-C Thunderbolt-enabled ports.





## HP SECURITY LOCK SOLUTIONS

Help protect your hardware at work and home with locking solutions that add an extra layer of security.



### HP Docking Station Cable Lock and HP Master Keyed Docking Station Lock

The HP Docking Station Cable Lock provides three different levels of protection. Level one—secure just your dock to a stationary object. Level two—secure your notebook to the dock. Level three—secure the dock, notebook, and expansion bay (HP Advanced Docking Station only).

- **Product length:** 185.93 cm
- **Weight:** 249.48 g
- **Product #:** AU656AA#XXX Docking Cable, AY474AA#XXX Master



### HP Master and Non-Master Keyed Cable Lock 10mm

Secure your notebook. Help keep your notebook safe in the office and high-traffic areas by tethering it to a secure surface with the HP Keyed Cable Lock 10mm and HP Master Keyed Cable Lock 10mm, designed specifically for ultra-thin profile notebooks.

- **Product length:** 182.88 cm
- **Weight:** 117.93 g
- **Product #:** T1A62AA Non-Master, T1A63AA Master



### HP Combination Lock

Secure your valuable IT hardware with this combination lock with preset combination that loops around any secure object and then attaches to the device you want to lock.

- **Product length:** 182.88 cm
- **Product #:** TOY15AA

# HP DOCK PORTFOLIO

Side-by-side comparison table



Product	HP USB-C Dock G4	HP Thunderbolt Dock G2	HP UltraSlim Docking Station
<b>Part #</b>	3FF69AA/UT#ABA	2UK37AA/UT#ABA 120W 3TR87AA – Combo	D9Y32AA/UT#ABA
<b>Global series?</b>	Yes	Yes	Yes
<b>USB technology</b>	USB-C™ Alt. mode	USB-C™ Alt. mode / Thunderbolt™	Mechanical (wide dock)
<b>Video resolution</b>	Standard resolution (out of the box): Single 4K @ 60Hz Dual 2K @ 60Hz Triple WSXGA+ @ 60Hz <sup>19</sup> *HI-RES enable via F10*	Dual 4K @ 60Hz (DP1.2 systems) Triple 4K @ 60Hz (DP1.4 systems)	Single 4K @ 60Hz Dual 2.5K @ 60Hz
<b>Power button</b>	Yes	Yes	Yes
<b>Ports</b>	2x DisplayPort™ 1x HDMI 2x USB 3.0 & 2x USB 2.0 1x USB-C™ data 1x headphone/mic combo 1x K-lock	1x USB-C™ Thunderbolt port (back) 1x USB-C™ Alt. mode & data 15W (back) 1x USB-C™ data only 15W (front) 2x DPs, 1x VGA 3x USB 3.0 1x RJ45 – Gigabit Ethernet 1x combo audio (side) 1x K-lock (side)	1x Side docking connector 3x USB 3.0 ports 1x USB 3.0 charging/data port 1x VGA port 1x LAN/Ethernet port 2x DisplayPort™ 1.2 1x line in jack / 1x line out jack 1x K-Lock 1x docking station cable lock slot (lock not included) 1x power connector
<b>Network manageability</b>	<b>PXE boot:</b> Legacy, UEFI <b>WoL:</b> * S0→S3, S0→S4, S0→S5, S3, S4, S5 <b>MAC address pass-through:</b> * S0, S0→S3, S0→S4, S0→S5, S3, S4, S5; PXE Legacy, PXE UEFI, WinPE <b>Preboot KB/display:</b> Y <b>iAMT:</b> N <b>LAN/WLAN switching:</b> Y (KBL and Windows 10 forward)	<b>PXE boot:</b> Legacy, UEFI <b>WoL:</b> * S0→S3, S0→S4, S0→S5, S3, S4, S5 <b>MAC address pass-through:</b> * S0, S0→S3, S0→S4, S0→S5, S3, S4, S5; PXE Legacy, PXE UEFI, WinPE <b>Preboot KB/Display:</b> Y (SLO)* <b>iAMT:</b> N <b>LAN/WLAN switching:</b> Y (KBL and Windows 10 forward)	<b>PXE boot:</b> Legacy, UEFI <b>WoL:</b> * S3, S4, S5 <b>MAC address pass-through:</b> * No. (No pass-through needed for embedded NIC; each platform has unique MAC address with Quest2. In other words, no specific Mac address for Quest.) <b>Preboot KB/display:</b> Y <b>iAMT:</b> Y <b>LAN/WLAN switching:</b> Y (KBL and Windows 10 forward)
<b>Key features</b>	- 90W AC adapter - Powers notebook without opening lid (power button on dock) - 1-year warranty	- Designed to USB-C™ industry specs to allow compatibility with HP and non-HP devices that support Thunderbolt™ and USB-C™ power and video - Compatibility across HP commercial notebook portfolio from X2 to MWS to notebook with an optional combo cable (May '18) - Optional audio module for integrated audio solution - Small footprint - Power button on dock to power the notebook - 120W AC adapter, 230W AC adapter (optional combo cable for 120W/230W PCs) - 1-year warranty	- Docking connector for notebook - Connect button secures/releases the computer (slide in to secure the notebook, slide out to release the notebook) - AC present: aqua white; dock connected: white; 2 RJ45 LEDs: amber/green - Asset security: 1 locking mechanism for notebook + dock - Easy to use, secure and manageable extension of the notebook - Conveniently located power button to power notebook via dock - Valued priced - 1-year warranty
<b>Size / weight</b>	7.8" x 2.7" x 0.86" / 0.769 lbs	3.9" x 3.9" x 2.7" / 1.76 lbs. (dock only)	1.7" x 14.5" x 4.2" / 1.69 lbs (0.76 kg)
<b>Cable length</b>	1-meter cable	0.7-meter cable	N/A

19. HP USB-C Dock G4 video: Single 4K @ 60Hz with USB 2.0 only support. Will be supported via F10. BIOS update required. First platform BIOS release targeted for July 2018.





Product	HP USB-C Mini Dock US	HP USB Travel Dock (DisplayLink)	HP USB-C Universal Dock (DisplayLink)
<b>Part #</b>	1PM64AA/UT#ABA	T0K30AA	1MK33AA (dock) 2UF95AA (dock + adapter) 3DV65AA (non-flash dock + adapter)
<b>Global series?</b>	Yes	Yes	Yes
<b>USB technology</b>	USB-C™ Alt. mode	DisplayLink	DisplayLink (non-flash: USB-C™ Alt. mode)
<b>Video resolution</b>	HDMI: Single 4K @ 30Hz; one display supported at a time	Single 2K	Single 5K @ 60Hz Dual 4K @ 60Hz
<b>Power button</b>	NO	NO	NO
<b>Ports</b>	1x USB-C™ charging/data port 2x USB ports (1 USB 3.0, 1 USB 2.0) 1x Ethernet port (10/100/1000) 1x VGA port 1x HDMI	2x USB ports (1 USB 3.0, 1 USB 2.0) 1x RJ45 – Gigabit Ethernet 1x VGA port 1x HDMI	2 x DP (DP 1.2) 3x USB2.0 1x USB3.0 charging/data port 1x USB-C™ (Data) 1x RJ45 – Gigabit Ethernet 1x headphone/mic combo 1x K-lock
<b>Network manageability</b>	<b>PXE boot:</b> Legacy, UEFI <b>WoL:</b> * S0→S3, S0→S4, S0→S5, S3, S4, S5 <b>MAC address pass-through:</b> * S0, S0→S3, S0→S4, S0→S5, S3, S4, S5; PXE Legacy, PXE UEFI, WinPE <b>Preboot KB/display:</b> Y (SL0)* <b>iAMT:</b> N <b>LAN/WLAN switching:</b> Y (KBL and Windows 10 forward)	<b>PXE boot:</b> Legacy, UEFI <b>WoL:</b> * S0→S3 <b>MAC address pass-through:</b> * S0, S0→S3; PXE UEFI <b>Preboot KB/display:</b> N <b>iAMT:</b> N <b>LAN/WLAN switching:</b> Y (KBL and Windows 10 forward)	<b>PXE boot:</b> Legacy, UEFI <b>WoL:</b> * S0→S3, S0→S4, S0→S5, S3, S4, S5 (w/ 4.5mm adapter: S0→S3) <b>MAC address pass-through:</b> * S0, S0→S3, S0→S4, S0→S5, S3, S4, S5; PXE Legacy, PXE UEFI, WinPE (w/ 4.5mm adapter: S0, S0→S3 PXE UEFI) <b>Preboot KB/display:</b> N <b>iAMT:</b> N <b>LAN/WLAN switching:</b> Y (KBL and Windows 10 forward)
<b>Key features</b>	- Pass-through charging requires a notebook or tablet. USB-C™ AC adapter. The dock does not include an AC Adapter. - Supports DisplayPort™ alt mode (video, charging, and USB 3.1) over the USB-C™ connector. Also compatible with USB Type-C™ Thunderbolt™ enabled.	- Bus-powered device. - The dock does not include an AC adapter - Only 1 monitor is supported at a time - 1-year warranty	- <b>Universal enterprise docking designed to industry USB-C™ specs, enables compatibility with HP and non-HP PCs.*</b> - Included USB-A adapter and 90W AC adapter (60W to device via USB-C™) - Display Link 6950. - Power not supported on mWKS or USB-data-only ports. - 1-year warranty
<b>Size / weight</b>	5.7" x 2.17" x 0.69" / .29 lbs (0.132 kg)	4.25" x 2.50" x .73" / .21 lbs (95 g)	7.87" x 2.76" x 1.1" / 0.77 lbs
<b>Cable length</b>	0.3-meter cable	3.75"	1-meter cable



CONTACT YOUR HP SALES REPRESENTATIVE FOR MORE INFORMATION.

© Copyright 2015–2018 HP Development Company, L.P. The information contained herein is subject to change without notice. The only warranties for HP products and services are set forth in the express warranty statements accompanying such products and services. Nothing herein should be construed as constituting an additional warranty. HP shall not be liable for technical or editorial errors or omissions contained herein. DisplayPort is a trademark owned by the Video Electronics Standards Association (VESA) in the United States and other countries. Chromebook is a trademark of Google Inc. Thunderbolt is a trademark of Intel Corporation in the United States and other countries. Microsoft, Windows, Skype, and Skype for Business are registered trademarks of Microsoft Corporation in the United States and/or other countries. USB Type-C and USB-C are trademarks of USB Implementers Forum.