

DESTINATION ÄLVSBYRN

the destinations of
SWEDISH
LAPLAND
SWEDEN'S NORTHERNMOST DESTINATION

summer/autumn 

THE MAGICAL STORFORSSEN


A spellbinding experience that leaves no one untouched

Shopping

FIND THAT SPECIAL GIFT
IN OUR STORES' UNIQUE
AND HANDPICKED
SELECTION

Get ready

for an adventure
in Swedish Laplands hidden pearl

An aerial photograph of a town nestled in a lush green valley. The town is surrounded by dense forests and rolling hills. A river flows through the valley, and a large industrial or commercial area is visible in the background. The foreground shows a mix of residential buildings, green fields, and a road.

IN BETWEEN LUSH VALLEYS, high mountains, glistening lakes, majestic river landscapes and vast flowering meadows, you will find the summer paradise that is Älvsbyn. Our warm days and light summer nights give you time for adventure and experiences every hour of every day.

Here you can visit the magical Storforsen and its aqualand, shaped by the force of the water, with natural formations and pools evolved over thousands of years. Bathe in the sun and enjoy the view from sunlit cliffs, cook a light lunch at one of the campfire sites. Go fishing in wild river streams or calm lakes. See the salmon spawn at the salmon ladder by the 11 metre high waterfall at Fällforsen, walk through the beautiful old-growth forests in our many nature reserves or go horse riding far beyond the public roads and enjoy the great silence. There's something for your tastebuds too – at restaurants and out in the wild. Why not go on a cloudberry safari, looking for our delicious gold?

Yes, nature has been generous to Älvsbyn, the region has been given many loving nicknames. In 1930 author Gustav Zohn described Älvsbyn as “the pearl of Norrbotten” in his memoirs, travelling through northern Sweden. This metaphor stems from the fact that, seen from above, Älvsbyn looks like a pearl framed by high mountains and deep forests, lined with a glistening, azure band; the Pite River – one of Sweden's national rivers.

Beautiful natural environments and hospitable people have led several major Swedish and foreign film companies to come here. This is a place to enjoy life, regardless of whether you seek high-tempo adventures or a calm, peaceful stay with your feet safely resting in the deep green moss. Come and let Älvsbyn open up your senses. Breathe the forest fragrance, hear the thundering river and treat your taste buds to delicacies from the local kitchen and the forest's pantry.

You are welcome to share our everyday life and discover your very own summer pearls in Älvsbyn.

An aerial photograph of Älvsbyn, Sweden, showcasing a large, winding lake with a central forested island. The surrounding landscape includes dense green forests, rolling hills, and a residential area with numerous houses and buildings. A road network is visible, including a roundabout in the foreground. The overall scene is a mix of natural beauty and human settlement.

Älvsbyn – the hidden pearl of Swedish Lapland



Storforsen

MAJESTIC, WILD, WIDE AND POWERFUL

Storforsen is visited by approximately 150,000 people every year, making it one of the most visited places in Sweden.

Here you will find barbecuing sites useful when spending a whole day by the river. Just remember that making a fire is sometimes prohibited during the hottest days of summer.

.....
Other rapids and falls in the region

Fällforsen

On your way up to Storforsen, the beautiful Fällforsen is a great place to stop for a coffee break, with a salmon ladder and a eleven metre high waterfall. During the log driving days, not only logs were driven here but also barrels of tar. They were transported by horse and carriage past the larger rapids and at Fällforsen they were rolled along a cobblestone trail, preserved to this day.

THE NATURAL FORCES at Storforsen will leave no one unmoved. The mighty river landscape with the largest unrestricted rapids in northern Europe have attracted visitors throughout the ages. The surrounding old-growth forest on the banks with its rich flora and fauna together with the river have provided transportation, accommodation, fishing and hunting. If you take a closer look at the seemingly untouched landscape you will find many traces of life and work from the past. Up until the 1980's, logs were driven down the river and structures built on the river to assist log driving remain to this day.

With its five kilometres and 82 metre drop, Storforsen offers one of the most powerful experiences in the region. Here you can follow the frothing masses of water along kilometres of trails and vantage platforms, taking you thrillingly close to the whirling waters. "Döda fallet" (lit. The Dead Fall) is one of all the places where the water has been forced to forge a new route. Rocks, water and friction have helped create a fairytale-like adventure landscape with wild canyons and giant cauldrons attracting visitors every day of the summer, regardless of the weather. Cool down in the water or enjoy the view from the banks, smoothed by the force of the water, with the sound of the mighty river in the background. You can easily cook a delicious lunch at one of the many campfire sites in the area. No need to bring firewood, you can get that from a firewood storage shed on location.

In this area, there is also a café, shops, a hotel, a log driving museum and many beautiful sights to see. Great efforts have been made to make the area accessible to visitors, with rest spots, information and signed hiking trails. Large parts of the area are also accessible to disabled people, for example, you can go by wheelchair all the way out to the river, on wooden footbridges.

Planning a wedding?

Naturally beautiful, as if taken from a fairytale, the Storforsen Chapel at the foot of Storforsen is an amazing place to get married. Romantic and atmospheric with natural beauty throughout all seasons. This very special chapel has the most spectacular altar piece imaginable, a window with a perfect view of Storforsen.

www.storforsen-hotell.se



Photo: Marcel Köppe



Photo: Marcel Köppe

Feel the wings of history beating at Forestry and log museum

Experience everyday life in the olden days and see the work of foresters and log drivers. Here, at the Storforsen nature reserve, there are around 20 buildings showing how forestry and log driving was done before being mechanised in the 50's. Here you will find tools, cabins, a charcoal kiln, a tar pit and stables, all telling the story of the past.

Experiences
OF NATURE THAT
YOU MUST NOT MISS.

Storforsen shop

This cosy boutique has a wide and great selection of locally produced crafts and delicacies. Here you will find everything from clothes and jewellery to cookware, decorations and many tasty treats made with regional ingredients and recipes. Perfect as a gift, for yourself or someone you love.

During the summer season, June 1 - September 31, the Storforsen Shop is open every day between 10 AM and 5 PM.
www.storforsenshop.com



Photo: Peter Lundberg



Photo: Marcel Köppe

The Storforsen Outdoor Stage captivates audiences and performers alike

Nature and culture become one on the unique outdoor stage that has been built to blend in with the magical natural environment at Storforsen. Like a natural amphitheatre, the rocky mountain sides form balconies and the sound of the river is an atmospheric accompaniment. During the summer, various events are organised here and you can enjoy them sitting on a blanket with a picnic basket. Would you like to know more about this summer's performers and events?

For information visit Storforsen tourist information or call +46 929 10860.

Swimming

BETWEEN FOREST AND MOUNTAINS

Pålsträsk is a popular summer gem. The large lake with its fine sandy bottom and lovely grassy, sandy beach attracts many visitors but there is plenty of space.

Find your way here: About 15 km from central Älvsbyn along route 94 towards Luleå.

Övrabyn is a sand island with lovely dunes, revealing themselves as the water of the Pite River recedes.

Find your way here: You will need a boat to get here, or, if the water is low enough, you can wade over from the northern river bank.

Vidsel:

In central Vidsel, alongside the Pite River, you will find this golden nugget and its sand banks.

Find your way here: Take the road down towards the river between Tempo and Renkronan and then turn right.

Bredsel:

In the stretch of smooth water below Storforsen you will find one of the most beautiful, magnificent places for a cooling dip in all of Sweden, with a view of Storforsen. However, this place is not particularly child-friendly.

Find your way here: Located in front of Hotell Storforsen.

Visträsk:

This pleasantly shallow lake has a very nice sandy, grassy beach.

Find your way here: Approx. 20 km from central Älvsbyn along route 94 towards Arvidsjaur.

Manjärv:

Another pleasantly shallow lake with very clear water.

Find your way here: About 30 km from central Älvsbyn along route 94 towards Arvidsjaur. Turn right towards Manjärv after about 20 km.

Korsträsk is a large, pleasantly shallow lake with nearby changing rooms and generous beach spaces, very popular with the locals. Do try it out!

Find your way here: About 8 km from central Älvsbyn along route 94 towards Arvidsjaur.

Krokträsk is a cosy smaller lake with a well-kept beach and a barbecuing site.

Find your way here: Approx. 9 km from central Älvsbyn along route 94 towards Luleå. Turn left towards Brännberg and drive for about 4 km.

Granträsk is another one of our lovely, pleasantly shallow lakes. Here you will find everything from a nice grassy beach to changing rooms, a barbecuing site, outdoor tables and benches.

Find your way here: About 19 km from central Älvsbyn, drive along Nygårdsvägen and then turn right onto Granträskvägen.

Selhomen lies by the Pite River, near the Selholmen campsite in central Älvsbyn, with a nice lawn and a fantastic sandy beach with a view of the majestic Hundberget mountain.

Lillstrand is a pleasantly shallow lake with a sandy beach, beautifully located with rural, rugged, idyllic surroundings and lush meadows nearby. Accessible for the disabled with a small shop and a car parking.

Find your way here: About 6 km from central Älvsbyn along route 94 towards Arvidsjaur.

Storforsen is a unique area for cooling dips in wild canyons and giant cauldrons by the thundering Storforsen river. Relax on rocks warmed by the sun and have a fika at one of the many campfire sites with free firewood.

Hitta hit: About 40 km from central Älvsbyn along route 374 towards Jokkmokk.

Pott!

ALONG THE RIVER THERE ARE SEVERAL SPOTS WHERE YOU CAN COOL OFF IN THE RIVER. HOWEVER, PLEASE NEVER UNDERESTIMATE THE POWER OF WATER CURRENTS.

possibilities



Foto: Marcel Koppe

Photo: Marcel Koppe



Pott!

On the boundary between Piteå and Älvsbyn you can spot the "sitting hen" on Stormyrberget mountain. A rock formation that looks like a hen hatching its eggs, shaped by the moving inland ice sheet during the ice age. It is not all that easy to find but clearly visible if you keep your eyes peeled.

From ancient times into the future

ÄLVSBYN IS ONE of the smallest inland municipalities of Swedish Lapland, yet it is home to some of the most majestic natural and cultural environments. Here there are clearly visible remains of the ice age as well as of the people who lived here during the Stone Age. Archaeological excavations have revealed traces and findings showing that hunters and trappers lived here as far back as 7,000 years ago. Don't let your eyes deceive you, even if the natural environment looks untouched and feels like uncharted wilderness, people have lived here since ancient times. They lived in small groups, on whatever nature had to offer. There was no 'no man's land' then, only new areas to discover. Now, you have the chance to make the same voyage of discovery through this amazing natural environment.

Go discovering along the many hiking trails, or find a route of your own. Give yourself time to relax, find rich fishing waters or a place to bathe, a beautiful view of the river landscape or just simply go for a walk-out. To the approximately 8,000 residents of Älvsbyn,

the closeness to nature, the aroma of forests and lakes, the sound of the river and nature's own pantry all help create a unique quality of life. There are 17 different nature reserves with everything from unique old-growth mountain forests to rare and protected species such as orchids, freshwater pearl mussels and golden eagles.

There are also several sites of significance to modern cultural history here, such as the "ghost town" Laver, Sweden's most modern community before the Second World War. Another such place is Kyrkmalmen where religion and science meet: an old church village in the heart of Älvsbyn with genuine church cottages surrounding a modern space monument erected in honour of the pioneering astronomer Knut Lundmark who lived there. In the late 19th century he was one of the pioneers in the field of galactic research that shaped the worldview which we still accept and learn from to this day. He was also the first to discover dark matter - a mystery that we are still trying to solve.

EXPLORE THE GHOST TOWN - THE MINING COMMUNITY THAT DISAPPEARED

In the 1930's, Sweden's most modern community was built in the middle of the Swedish Lapland wilderness. The Laver mining community had a higher standard of living than most people at that time could imagine with district heating, electric stoves, refrigerators, water toilets and electric lighting both indoors and along the streets. In the forest, there was also a store, a school, a fire station, a cinema and a post office. However, just ten years later, the mine was shut down, the buildings were moved and Laver became a ghost town. Today, the ghost town is a popular place to visit, with street signs and building foundations telling the story of the former glory days. We recommend bringing your own fika, snacks and drinks, to enjoy by the old mine that is now a lake, as wide as it is deep.

DID YOU KNOW THAT... Laver was probably the inspiration for the fictional ghost town, Mervas, in Elisabeth Rynell's novel "To Mervas", often regarded as one of the best Swedish fictional novels of the 21st century.

Photo: Marcel Köppe



WELL WORTH A DAY TRIP - FOLLOW THE CAVEMEN IN MANJÄRV

Manjärvi is one of the oldest cultural villages in Älvsbyn, named after the lake in the area with the same name. The name is rooted in the Sámi language, meaning "the tribe's lake". Here you will also find Finnäset where unique archaeological remains have been found although during the Stone Age it was an island surrounded by the Gulf of Bothnia. In addition to about 20 dwellings, hut foundations, hearths and fire pits, the oldest identifiable human in the Nordics has also been found here, in a 7,000 year old grave, unlike any other in Europe. This archaeological trail is captivating for everyone, regardless of age. At the beginning of the trail there is a campfire site with seating and a table with benches, a perfect place to eat your packed lunch.



Photo: Michael Johansson

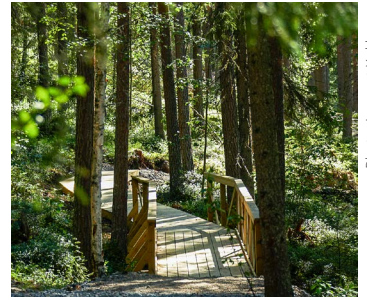


Photo: Lennart Kekkonen

The experience forest

Opposite to Hotell Storforsen is Bredselberget mountain. Here you will find an easy trail through the forest where you can learn more about nature and plant life. On the mountain there is also a cottage and places to barbecue, with benches and wind shelters. If you continue further up on the mountain and more to the right, you will have a fantastic view of Storforsen.

DID YOU KNOW THAT...

nature reserves are areas where the natural environment is particularly sensitive? Here, rules are stricter than those which normally apply under the Right of Public Access. Read the signs and follow the rules. Information about the Swedish Right of Public Access can be found at www.allmansratten.se



Photo: Marcel Köppe

A trip down memory lane at the Petrol Museum

It might not look like much from outside, but behind its doors is a treasure like no other for nostalgic car enthusiasts. The Petrol Museum has two floors with Sweden's largest exhibition of old petrol stations from the 1920's to the 1960's as well as other artefacts such as spare parts, advertisements and motor magazines. Everything from pumps to the smallest little ad and anything and everything that used to be part of a well-stocked petrol station. Here you can browse, be amazed and reminisce for hours. The museum is open on request.



Tours begin and end at Rickard's Western Ranch, with a saloon, a saddle workshop, a bathing cabin with a wood-burning sauna and a country store. Everything from day tours to week-long tours in the saddle are available. www.uddaaventyr.com

Let nature become your adventure

WE ALL YEARN FOR FREEDOM every now and then. Just venturing out into the unknown, trying something new, taking each day as it comes. Now is your chance, because here you can literally ride out into new adventures. Just like in the old western movies, you can sink into the soft western saddle and go on long journeys into the unknown. Feel the power and energy of the horse, in symbiosis with nature, set up camp for the night and cook your food on an open fire whilst the horses graze and cool off by a forest mere. If it's a hot summer night, bring a blanket and sleep out in the open, or go swimming in the midnight sun. We promise you that Rickard at Udda Äventyr, a western riding expert, will make you experience the natural environment from a new perspective, in a true cowboy adventure.

Taking each day as it comes is the key to having a wonderful summer, together with lovely baths of course. Choose between warm lakes or cooling dips in the river, sand between your toes or cliffs warmed up by the sun. The ever-varying natural environment has something for everyone and there are many jewels to discover.

For the daredevils who can't get enough adventure, there is also rock climbing on vertical cliffs and whitewater rafting on Europe's highest unrestricted river. Why not try a glider flight, where you can, on calm days, enjoy the mile-wide view with the archipelago in one direction and snow-clad mountain peaks in the other. Embrace the holiday freedom, go beyond your everyday life and create lifelong memories. Let our constantly varying natural environment become your next adventure.

THRILLING WHITEWATER RAFTING IN STORFORSÉN

Feel the frothing water against your face and your adrenaline pumping. Come on the adventure of your life. The standard tour takes approximately two hours with a safety demonstration and is carried out with at least six people. Longer tours, with breaks featuring light snacks made with local, natural ingredients, are also available on request.



Photo: På land och vatten

a few selected

PEARLS AMONG OUR
EXCITING AND
OUTDOOR
EXPERIENCES

DID YOU KNOW THAT...

Nature reserves are areas where the natural environment is particularly sensitive? Here, rules are stricter than those which normally apply under the Right of Public Access. Read the signs and follow the rules. Information about the Swedish Right of Public Access can be found at www.allemansratten.se



BEAVER SAFARI

Evenings are the best time to spot this rodent, a close encounter with a beaver in the light summer night is something quite special. Go beaver spotting alongside running water or come close sitting in a canoe. Round off the adventure with some fika by an open fire.



Photo: Marcel Köppe

DO YOU DARE TO TRY?

If you would like to try rock climbing in Swedish Lapland, Älvsbyn is a great place to start. With mountains like Dödlarsberget, Kälsberget and Hundberget there are plenty of cliffs for everyone from beginners to seasoned climbers. The challenging, vertical wall at Dödlarsberget is popular with climbers coming from both near and far.

MAKE YOUR DREAM COME TRUE - SAIL UP HIGH IN SKIES OF BLUE

A modern glider aircraft provides a very comfortable, pleasantly thrilling experience. Every flight begins with a motorised aircraft towing you to an altitude between 600 and 1,200 metres. As a passenger, you can participate in the flight as much as you like or just lean back and enjoy the mile wide view. Demo flights every day from June 1 to August 15.



Photo: Marcel Köppe

BLACK GROUSE MORNINGS

During April and May you can experience the magnificent mating display of the black grouse. Go out for a couple of hours or stay overnight in a tent in the forest to listen and look for the majestic blackcocks. You will often get to see other animals such as great grouse, ptarmigans and elk if you keep really still.

HORSEPOWER

Try something different, a weekend with accommodation and activities for the whole family. At Canis Hästkrafter you will find an apartment with a loft bedroom for up to 6 people as well as horses for hire. Ride in the forests surrounding the farm or on the riding track, tour guides will join you on request. Here, you can also go for horse and carriage rides and there are riding options for people with disabilities.



Photo: Canis hästkrafter

TAKE THE OPPORTUNITY to catch a record-breaking pike or large perch in our calm, rich lakes. Go out into the light of the midnight sun along the Pite River, where grayling and trout wait behind large rocks and in deep hollows. Or lure the salmon by the mighty river rapids at Storforsen and Fällforsen. There are many exciting fishing opportunities in and around Älvsbyn. With more than 50 different fishing lakes, both large and small, river stretches, streams and rapids, there are waters to suit every taste.

The key to fishing luck is knowing which fish to find where – the easiest way to do that is with a guide. One of the specialists in Älvsbyn, who can give you a fishing experience that you will remember for the rest of your life, is the natural fishing guide Kaj Kottelin. Born with a casting rod in his hand, he's a Swedish ice fishing champion and a fly fishing

expert. He generously shares his knowledge of the natural environments and waterways of Älvsbyn and Swedish Lapland. In his own words: "With me, you're not just going on a fishing trip, you're getting a fishing experience."

To Kaj, fishing is not just a livelihood and a hobby. It's also therapy. During his guided tours, he always tells participants to turn off their phones. It's not just about catching the most or the biggest fish, it's just as important, if not more so, to have an unforgettable fishing trip, an experience. "If you're coming from 'the big city' or somewhere else where life is hectic, full of work, school, going to the gym and having a phone that's constantly ringing...you shouldn't have to think about that whilst on one of my tours. Here, you should just relax and let nature come closer to you. Catching a lot of fish is just a bonus!"

“Here, you’re not just going on a fishing trip, you are getting a fishing experience.”





DEVELOP YOUR SKILLS

Fishing can be tricky. Regardless of whether you are a beginner, a bit rusty or a seasoned fisher in other regions, it can be helpful to learn about terminology, technique, equipment and species. You don't need very much equipment to get started. Kaj Kottelin at Naturfiskeguiden will teach you what you need to know offering courses in, for example, fly tying, casting techniques and materials selection as well as tailor-made natural fishing experiences.

FISH RESPONSIBLY

To help fish populations in our waters last for future generations, you should not take more fish than you need yourself. Rules and regulations are in place to protect our fish populations. Some are part of Swedish law and others are local regulations. If you violate these, you may face fines. Ask for more information when you purchase your fishing licence.

If you are releasing a fish, treat it carefully so as not to hurt it. Do not subject the fish to unnecessary stress and unhook it carefully. If it bleeds from the gills or is otherwise badly hurt, it might be best to put it down. Spare smaller fish so that they can grow old enough to spawn.



Photo: Ulrik Bylander

WHERE TO BUY FISHING LICENCES

When you go fishing, read up on the rules that apply and check if you need a fishing licence. Licences can be bought at Gulf, OKQ8 and Gårdings Järnaffär in Älvsbyn. The Storforsen shop sells licences for the Pite River Economic Association. You can also buy fishing licences online at www.sveaskog.se

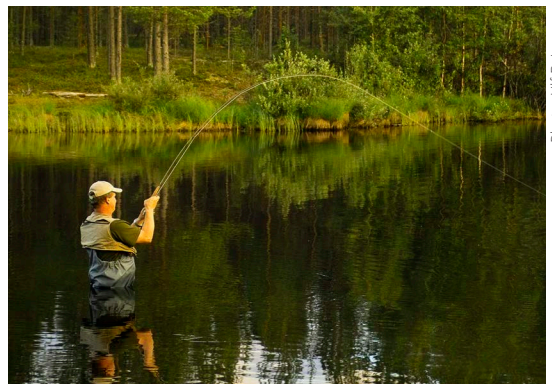
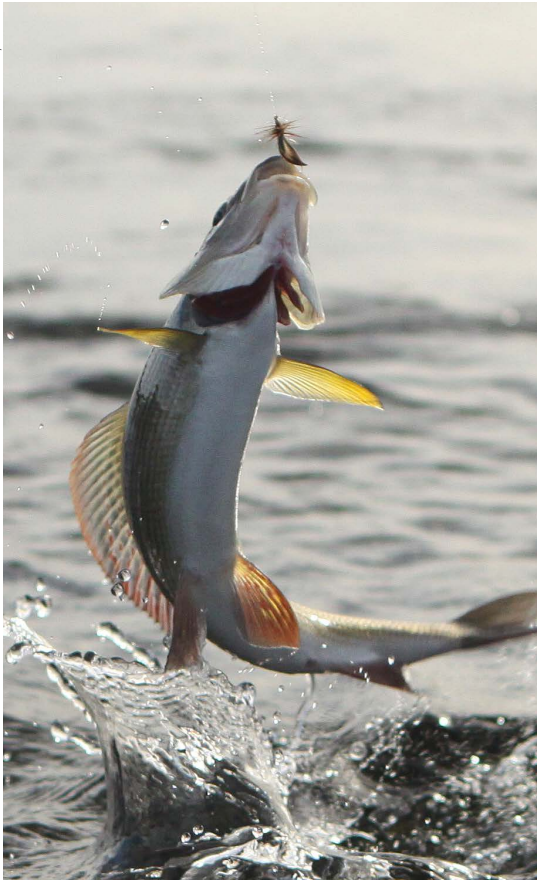


Photo: Ulf B. Jonsson

VIP FISHING IN YOUR OWN LITTLE LAKE

At Nattberg you can fish undisturbed in your very own little lake. There are plenty of rainbow trout, grayling and trout. Fishing equipment is available to borrow. You can then enjoy lunch or dinner in the Nattbergsstugan cottage. Do combine it with a sauna and an outdoor hot tub bath. VIP fishing is organised by the natural experience company På land och vatten.



Shopping in Älvsbyn

— SIMPLE, FUN AND PERSONAL.

GOING SHOPPING IN ÄLVSBYN is a delight. Stores are close by, offering unique and well curated selections. The staff are experts at what they sell and regardless of whether you would like tips and advice, help with trying things on or just chat for a while, they are helpful and accommodating. Älvsbyn is renowned for personal service, warmth and expertise and many people come here from afar to find fun bargains, good quality items and a pleasant shopping experience.

Stores, cafés and restaurants lie close together, so if your feet get tired and your bags feel heavy, a lovely meal or a coffee break is always just a stone's throw away, allowing you to sit down and inspect your bounty whilst you top up with more energy.



More information about the stores in Älvsbyn on www.alsvbyhandel.se





HANDPLOCKAT - A LITTLE BIT EXTRA OF EVERYTHING

Handplockat (Hand Picked) is a boutique that really lives up to its name. Here you can find everything from new design to vintage interiors, gardening, clothes, confectionery, books, jewellery, spa and children's items. Everything is carefully curated by the staff, travelling nationally and internationally to hand pick the best of the best.

PREPARE FOR ADVENTURE

Sportingen is the sports and outdoor store guaranteed to prepare you for all the adventures that you are planning whilst here in Älvsbyn. The store has one of Swedish Lapland's widest selections of sporting goods, shoes and clothing. Featuring brands such as Salomon, Haglöfs and Lundhags. The store also has a cycle and ski workshop with expert staff.

Gårdings Järnaffär is more than a hardware store. During the summer, the store has fully stocked departments for outdoor living, hunting and fishing - perfect for those planning an adventurous stay.



Photo: Robin Nilsson



Photo: Gårdings



A CENTRAL, GREEN OASIS

Lomtjärnsparken is a large green area and a popular meeting place in central Älvsbyn. Here you will find places to barbecue, a summer café and a modern, highly popular playground, accessible for children with disabilities. It is also a perfect picnic area with kubb (a combination of garden bowling and horseshoes) and badminton equipment available for hire, you can play boule and listen to performers on the outdoor stage. Large flea markets and other kinds of bazaars are also arranged here - keep an eye out for what's going on during your visit.

Look for upcoming events on www.alsvbyn.se/visit



Photo: Marcel Köppe

Culinary culture



Food is not just for satisfying your appetite, it's also an enjoyable experience, regardless of whether you dine at a restaurant or eat out in the wild. In Älvsbyn we love food – we blend nature and culture, old traditions and new ideas. Local ingredients from our rich environment are served in traditional courses or added to exotic recipes from every corner of the world. It all boils down to one thing: genuine ingredients, served tastefully, with pride and generosity.

Älvsbyn has many things to be proud of, taken directly from the forest and the natural environment: Mushrooms, arctic raspberries, elk, reindeer, wild salmon, lavaret and cloudberries, just to name a few of the many golden nuggets. How about elk carpaccio, French fish soup made with wild salmon caught in Fällforsen or Caesar wraps made with Sarek flatbread?

Here you will also find a true Swedish celebrity, popular for breakfast, as a snack, when travelling or as part of packed lunches. In Swedish homes, the soft, round flatbread Polarkakan is a true classic. The recipe was invented in Älvsbyn in 1879 as the “roa-

ming baker” Johan Nilsson, having wandered from Gothenburg to Lapland, chose to settle down here. Inspired by the thin Sámi bread made on heated stones out in the wild, he created the recipe for today's Polarkaka. He passed it on to his children, creating a heritage that has been managed by the family every since. “It comes down to northern Swedish perseverance and persistence actually. Things haven't always been going well. Back in 1912 we went through hard times, but we saved the bakery by trading a kicksled for one kilo of yeast. You have got to be inventive”, explains Elisabeth Nilsson Singh, great grandchild of Johan Nilsson, with a laugh.

“My mother invented the renklämma (a ready-made sandwich with reindeer meat) as well. It was first known as ragstrut and then as the polar sandwich because she thought it sounded exotic. Then it became simply renklämma, because it tastes so good! Even if the sky's the limit when it comes to spreads and fillings, butter and cheese or reindeer meat are still my favourites. It's so good when you're outdoors. Simple and great!

The Bakery Museum

Bake your own polarkaka according to the old recipe. Step into the place where the family business Polarbröd began its journey.

THREE OPEN-AIR ESTABLISHMENTS TO ENJOY THIS SUMMER

Clary's Krog - Classic Swedish food, innovative local tastes

A great lunch buffet is served here, focusing on classic Swedish food. In the evening, the tables are set for à la carte. Try the elk carpaccio starter with lingonberries, pickled carrots, Västerbotten cheese cream, pine nuts, sourdough crumbs and parmesan cheese. For the main course, you grill your own meat on a black rock grill at the table.

The well-renowned Centrumkonditoriet or Konditori Centrum as it is really called, opened already in 1919 and has been a popular café ever since. Here you can order specially designed cakes in all shapes and colours.

Let our beautiful nature become your outdoor dining!

Make a lovely picnic basket with your own favorites and enjoy the food in the nature. In Älvsbyn there is a lot of cozy, beautiful and exciting places. There is an incredible view from the top of Hundberget.



Yum! Ekbergs Konditori (Patisserie) has a pastry that you simply mustn't miss! With love and care, the pastry "Norrbottens pärla" (the Pearl of Swedish Lapland) was developed to celebrate Älvsbyn. It is indeed just like Älvsbyn - one of a kind!



Elisabeth Nilsson Singh and her mother, treating the then Crown Prince Carl Gustaf to a polar sandwich during an expo at Skansen in Stockholm, 1972.



Photo: Marcel Köppe

Soft made

BETWEEN FOREST AND MOUNTAINS

HAVING PERFECT ACCOMMODATION during your vacation is almost as important as the things you can see and do. In Älvsbyn, we are serious about hospitality and therefore we offer you a wide range of accommodation. Would you like to be pampered with a spa, a hotel breakfast and come home to freshly cleaned room after a day of adventures? Are you eager to just open your tent, step outside and stretch out in the crisp morning air?

Would you like to try something completely different, substituting city life for the life on a farm? Read the morning paper on the front porch with a good cup of coffee and freshly made bread whilst the friendly farm cat bids you good morning.

Whatever your choice, we have a wide selection of great places to stay. Some of our pearls can be found on the next page.

View towards Skataudden, seen from Lillstrand.



With memories from the past

At Norrskensudden you will find charming holiday cottages with an air of nostalgia, such as the old soldier's farmstead dating back to the 18th century with tealights and a kerosene lamp as the only available sources of light. However, in summer you need not worry about it getting dark. Through the window, you will have front-row seats as the evening sun is mirrored beautifully on the lake. Here you can go fishing, or rent a pedal boat, rowboat or canoe. A sauna and a campfire site is also available for hire down by the lake, to rest and relax. All this in scenic surroundings with the mountain Falkberget towering beyond the lake.



Photo: Norrskensudden



Photo: Skataudden

A farm for the whole family

In wonderfully idyllic Lillkörtärsk you will find the well-renowned Skataudden farm, which has been in operation for four generations. Here you will have a fantastic view of the lake and you will get to experience life on the farm with the animals on the farm and in the village. Staying here, you can follow the everyday life of a farmer. Why not help with milking the cows or feeding the calves? There are two cosy, modern cottages on the farm, including free access to a canoe, a boat, a barbecuing site and a sauna raft.



Rest in

BETWEEN THE
ADVENTURES IN A
LIVING OF YOUR
CHOICE

Storforsen – accommodation to suit all tastes

By the foot of the mighty river lies the Storforsen Hotel with Mother Nature's own art just around the corner. Here you will find everything from single rooms to family rooms and luxurious suites. After a day of adventures along the river we promise you that you will sleep well, without a worry in the world. Here there are many activities for all ages and tastes but during the summer, a walk in the scenic surroundings can be quite enough. In the same area, you will also find the Storforsen campsite with cottages and caravan parking.

Walk of fame: At the Storforsen campsite you will find the now-famous pub "Raimo's Bar", built as the set for the film The Hunters (Swedish: Jägarna).



Photo: Bergslagsbild AB

Countryside and city life side by side

The Selholmen campsite is found in central Älvsbyn, yet surrounded by an amazing natural environment. With a fantastic view of the Pite River you can choose between staying in a tent, a caravan or in a log cabin with a simple kitchen. Some way upstream on the Pite River you will find the islet after which the campsite has been named - Selholmen. On this little islet, reached by a wooden bridge, you can go for a picnic or barbecue on warm summer nights. At the campsite you will find a kiosk, barbecuing sites, places to bathe, walking and running trails and a service building offering various amenities.



Photo: Peter Lundberg

Polar Hotel

Centrally located, within walking distance of the shopping district, cafés, a cinema and the green oasis Lomtjärnsparcken is the modern Polar Hotel. Here you will find all amenities imaginable: a sauna, a relaxation area, a gym and a lounge bar and restaurant with designer lighting inspired by the seasons of Swedish Lapland. There is also a cosy summer terrace on the ground floor, with a great view over Älvsbyn

Nature reserves to explore

Is there anything better than going on a really long hike and being at one with the majestic natural environment? For those planning to go hiking, here are a few of our more than 17 nature reserves, well worth a visit.

STORBERGET -

FANTASTIC VIEW

From the peak of Storberget you can see a spectacular view of the landscape and the lake and forest around Manjärv. On the souther slope of the mountain you find an old pine forest.

VITBERGET -

ÄLVSBYN'S HIGHEST PEAK

The Vitberget mountain has the highest peak in the municipality, 594 metres above sea level, as well as a natural forest offering a wealth of environments. The reserve is a mountain massif with 6 peaks and hollows in between and the area is of great importance to many species. There is a cabin open to the public. The eastern part of Vitberget has several brooks, adjacent to the Hålbäcksmyrorna wetlands. Along one of the brooks, a very rare hanging lichen known as Old Man's Beard has been found, growing in long ribbons on spruce trees.

DJUPTRÄSKET -

A POPULAR FISHING LAKE

Djupträsket is a rugged nature reserve with steep slopes down towards the popular fishing lake carrying the same name. Here you can hike through thick pine forests or look out over the lake from the summit of one of the three mountains in the area. If you would like to go fishing, you need to buy a fishing licence.



Photo: Marcel Köppe

DUBBLABERGEN -

A NEW NATURE RESERVE

The terrain is rugged and amongst the hills and mountains you will find beautiful little lakes, as well as long and narrow mires. In the middle of the area is a very old spruce forest. In the northwestern part of the reserve you will find the beautiful Lake Hästjärnen.



Photo: Marcel Köppe

RACKBERGET AND HUNDBERGET -

PLENTY OF ORCHIDS AND A PERFECT VIEWPOINT

The steep Rackberget mountain provides a backdrop to the farmland of the river valley. As the earth's crust was pushed down following the ice age, the mountain popped up like an island in the sea. This means that the Rackberget peak has never been affected by the waves of the sea, the loose moraine remains like a skullcap on top. Several orchids grow on the mountain, the early blooming fairy slipper, the fragrant lesser butterfly orchid, the mystical ghost orchid and the beautiful, red heath spotted orchid.

The mountain, Hundberget, is smaller and you can reach its summit more quickly. Once there, you will see a beautifully framed portrait of Älvsbyn and the Pite River. Inside the nature reserve you will find marked trails, a rest cabin and barbecuing sites.

VISTJÄRNLIDEN

In the nature reserve you find a mix of conifer forest and swamp forest. You can also find birds which are associated to nature forest environment, for example siberian jay and the three toe woodpecker. 170 years ago a forest fire ravaged the area and you can still see tracks from the fire.

RÄVABACKEN -

EASILY ACCESSIBLE, WITH TRACES OF THE ICE AGE

This reserve is a scenic area, well worth a visit for its old forests, rare species and terrain formations. It is quite remarkable that such an unexploited area still remains so close to a public highway. Here you will find ice river deposits, kettle holes and sand and gravel fields left behind by the moving inland ice sheet. The nature reserve is easily accessible and suitable for beginners wishing to try outdoor living.

NAKTEBERGET -

RICH WILDLIFE

If you would like to experience a beautiful natural environment and the feeling of untamed wilderness, do visit the Nakteberget mountain. The mountain has a strong old-growth mountain forest character and a rich bird life: inside the reserve you will find golden eagles, three-toed woodpeckers and great grouse. On the mountain there are also two meres with artificially introduced fish.

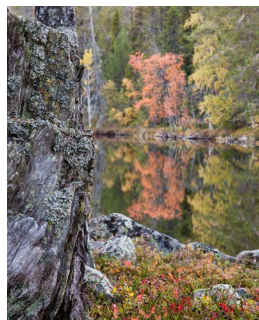


Photo: Marcel Köppe



ÄTRÄSKET

A nature reserve which is easily accessible. It is nice to hike in the nature reserve.

MIDNIGHT SUN
IN THE SUMMER

Welcome to Älvsbyn



TIPS FOR YOUR HIKE

1. Remember that longer hikes require a certain level of physical fitness - start out easy. If you are carrying heavy luggage, you should try walking with it first.
2. Pack properly. It's always good to bring a water bottle, a light meal, a dry change of clothes, rainproof clothes and an extra pair of shoes. Pack your things in a bag that you can carry comfortably.
3. Avoid woollen clothes. Wool absorbs moisture and can make you wet and cold.
4. Bring a map and a compass or walk with a guide if you're unfamiliar with the terrain. You cannot be certain that you will always have mobile phone coverage.



Summery Smorgastarta

(SWEDISH: SMÖRGÅSTÅRTA, LIT. SANDWICH CAKE)

One smorgastarta 12-15 pieces

3 whole bread cakes (6 halves) Polarbröd Jubileumskaka

Cheese cream

400 g natural cream cheese
4 dl creme fraiche
1 tsp salt
1/2 tsp white pepper

Spread 1

200 g feta cheese, mashed/crushed
1 apple, diced
3 tbsp chives, finely cut

Spread 2

4 hard-boiled eggs, finely diced
1/2-1 box garden cress, cut
1 tsp French mustard

For decoration

1 head of crisp lettuce, 12 slices of cheese, 250 g brie in pieces, 1 apple thin slices, 1 box of strawberries chopped or sliced, fresh basil leaves

Start by beating cream cheese and creme fraiche with a handmixer, making the base for both spread and topping, add salt and pepper to taste. Do not use diet products as they cannot be beaten in the same way. Split the cream into three bowls, one can be smaller, for the topping. Flavour the other two with the ingredients of spreads 1 and 2 respectively.

Assemble the smorgastarta: Place 1 large, round slice of bread like a circle on a tray and add spread number 1 on top. Add another layer of bread and spread number 2. Add yet another layer of bread and top with the neutral spread. Decorate with rolled-up slices of cheese, brie and apple. Place the strawberries in the middle and garnish with basil just before serving.

Tip: the best way to get finely diced egg is to use an egg slicer and rotate the egg, giving you nice little square pieces.

Coffee & pastries

Photo: Clarys krog



CLARY'S KROG

Medborgargatan 2, Älvsbyn
+46 929-80070
www.clarys-krog.se

A great lunch buffet is served here, focusing on classic Swedish food. In the evening, the tables are set for à la carte

TRESCORONA RESTAURANG

Glazed-in outdoor restaurant open during the summer, serving pizzas, grill dishes and à la carte. Lunch.

Storgatan 4, Älvsbyn
+46 929-12964

HOTELL STORFORSSEN

In our restaurant with a view of Storforsen there is room for up to 300 guests. Please make reservations in advance and be our guest. Lunch, Dinner buffet (summer buffet during summer), à la carte, every day

Bredsel 105, Vidsel
+46 929-72100
www.storforsen.se



Photo: Storforsen hotell

KANISKROGEN

At the foot of Älvsbyn's ski slope you will find the family friendly Kaniskrogen. Eat in a nice, relaxing environment with a lovely view of the Kanisbacken slope. We are fully licensed. The restaurant is always open when the slope is open, during the winter season (and also during upcoming summer activities).

Kanisbergets Skidanläggning, Älvsbyn
+46 929-17202
www.kaniskrogen.se

PIZZERIA TIC TAC

In central Vidsel, approx. 35 km from central Älvsbyn. The restaurant has everything from pizza and grill dishes to kebab dishes and salads. Outdoor serving during summer.

Västra Vidselsvägen 1, Vidsel
+46 929-34002

EKBERGS KONDITORI

The patisserie always offers home made pastries and cakes, as well as a couple of savoury dishes.

Storgatan 10 B, Älvsbyn
+46 929-13395



Photo: Hotell Storforsen

Photo: Ekbergs konditori

HEART TO HEART

Restaurant serving kebab dishes, pasta and Thai food.

Nyvägen, Älvsbyn
+46 929-12858

GOY & GEE THAI OCH GRILL

The restaurant serves Thai food and offers a lunch buffet with a touch of Thailand.

Medborgargatan 3, Älvsbyn
+46 929-60011

Photo: Konditori centrum

SIBYLLA MIX HAMBURGERRESTAURANG

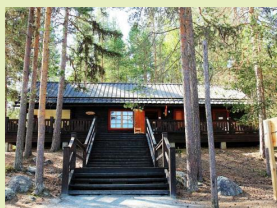
The restaurant has seating for 47 guests and serves hamburgers, kebab etc.

Storgatan 9, Älvsbyn
+46 929-55080

KAFFESTUGAN

Coffee cottage inside the Storforsen nature reserve, serving palt (potato dumplings), waffles, hot sandwiches, ice cream and fika (pastries).

+46 929-72100



ÄLVSBY FOLKHÖGSKOLA

Lunch restaurant offering everything from palt to fish dishes. Open from the beginning of the winter semester until the last day of June. During the school year, opening hours follow the school schedule.

Nygrensvägen, Älvsbyn
+46 929-72321

RESTAURANG FLUXEN

The restaurant offers a classic lunch buffet with a main course, vegetables and fika for dessert. You can also order various grill dishes and the salad of the week.

Skolgatan 23 C, Älvsbyn
+46 929-17039



POLAR HOTELL

Lunch buffet and a restaurant serving à la carte.

Storgatan 29, Älvsbyn
+46 929-55740

PIZZERIA ARAMO

Pizzeria also offering salads, kebab dishes, falafel, wild game, sandwiches and grill dishes

Storgatan 10 D, Älvsbyn
+46 929-10003

RESTAURANG VENEZIA

Pizza, grill dishes, salads, à la carte, amongst other things.

Storgatan 43 B, Älvsbyn
+46 929-14099

PIZZERIA TRE KRONO

The restaurant offers classic pizzas, salads and grill dishes.

Storgatan 14, Älvsbyn
+46 929-55517

ÄLVÅKRAGRILLEN

Älvåkra Idrottsplats, Älvsbyn
+46 929-13144

SUMMERCAFÉ IN LOMTJÄRNSPARKEN

Summer café serving coffee, pastries and ice cream.

Lomtjärnsparcken



Photo: Marcel Köppe

KONDITORI CENTRUM

At our patisserie you will find fresh pastries, everything from cookies to fancy cakes, baked with love in our very own bakery. In our café you can enjoy a good cup of coffee with something sweet. We also serve hearty homemade food, fresh salads and sandwiches.

Storgatan 19, Älvsbyn
+46 929-100 24

Activities

FLY FISHING COURSE

You will be learning about casting techniques, insects, the natural environment and the waters and also how to behave in order to preserve nature whilst visiting. We help you develop your spinner fishing, giving you the right knowledge to create an even better fishing experience.

Naturfiskeguiden
Strandvägen 15
+46 73-1839582
kaj@naturfiskeguiden.com
www.naturfiskeguiden.com



Photo: Naturfiskeguiden

PUT AND TAKE FISHING

Put and take fishing on the lakes Anderstråk, Storlidträsket, Sönerstjärn
Species: Trout, arctic char, rainbow trout as well as perch in Anderstråk and Sönerstjärnen.
Sönerstjärn is now accessible for disabled people.
Fishing licences can be purchased at www.plov.se or from a licence vending machine.

På Land och Vatten
Vistbacka 33
+46 929-21166
+46 70-6057479
info@plov.se
www.plov.se

NATURAL FISHING EXPERIENCE UNDER THE MIDNIGHT SUN

A guided fishing tour in the untouched environment of the Pite River Valley. Experience the characteristic water currents of the Pite River and give yourself an unforgettable natural fishing experience.

Naturfiskeguiden
Strandvägen 15
+46 73-1839582
kaj@naturfiskeguiden.com
www.naturfiskeguiden.com

Photo: Ulrik Bylander

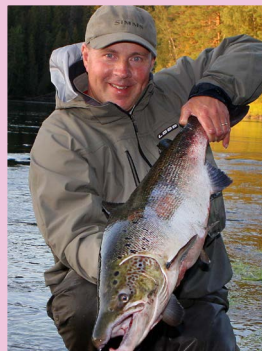


Photo: På land och vatten

WHITewater RAFTING ON THE PITE RIVE

Come on the adventure of your life. Daily tours from May to September. The standard tour takes approx. 2 hours. We also do longer tours on request.

På Land och Vatten
Vistbacka 33
+46 929-21166
+46 70-6057479
info@plov.se
www.plov.se

CLOUDBERRY SAFARI

During the second half of July and until mid-August, you can pick the 'forest gold' at these latitudes. We guide you out onto the cloudberry mires. Their growth varies from year to year. Everything depends on how weather and winds have been during spring and summer. Of course, you will get a jar of cloudberry jam to bring home, to add a golden lining to any special occasion. Half day or full day safaris. We guide all summer, even outside the berry-picking

På Land och Vatten
Vistbacka 33
+46 929-21166
+46 70-6057479
info@plov.se
www.plov.se



Photo: Marcel Köppe

THE TRAPPER TRAIL

Walk along a true trapper trail. Here you will get to see and learn more about various kinds of traps; how to place them, what they are used for and so on. Old trapping methods are also demonstrated. With a bit of luck, we might even get to empty a trap.

På Land och Vatten
Vistbacka 33
+46 929-21166
+46 70-6057479
info@plov.se
www.plov.se

PERCH AND PIKE FISHING

Guided fishing experience in a scenic environment

Naturfiskeguiden
Strandvägen 15
+46 73-1839582
kaj@naturfiskeguiden.com
www.naturfiskeguiden.com

THE PETROL MUSEUM

Sweden's largest exhibition of old petrol stations from the 1920's to the 1960's as well as other artefacts such as spare parts, advertisements and motor magazines. The museum is open on request.

+46 70-378 21 60
www.caltex.nu



Photo: Marcel Köppe

RELAXING RIDING TOURS, HALF DAY TOURS, FULL DAY TOURS

Horseback riding along winding trails, up and down mountains.

Canis Hästkrafter
Lillkorstråk 201
+46 70-5732666
annika@canishastkrafter.se
www.canishastkrafter.se



Photo: Canis hästkrafter

Aktiviteter / Kultur

ADVENTURE RIDING

Adventure riding, with the emphasis on adventure. The company has its own horses, all western trained and equipped with quality saddles and all other equipment needed for a successful ride.

Udda Äventyr
Stockfors
+46 929-51170
+46 70-5851171
contact@uddaeventyr.com
www.uddaeventyr.com



Photo: Marcel Köppe

NATURPASS KANIS

From June to August, the Naturpass Kanis orienteering competition with 20 checkpoints of varying difficulty, takes place in the rugged Kanis area. Naturpasset can be purchased at Sporringen, Coop Extra and OKQ8.

ÄLVSBYN'S SWIMMING BATHS

Here you will find a 25 metre pool with 6 lanes. There is also a children's pool, a 1 metre diving board, a 3 metre diving tower and a small water slide. You can borrow floats, arm floats, balls and other equipment.

Parkgatan 2
+46 929-17126

Photo: Maria Söderberg



THE LAVER MINE

The Laver Mine is located about 50 kilometres west of Älvsbyn and 10 kilometres north of Nattberget along route 94. There used to be a copper mine here, with Sweden's most modern community, built in 1937.

THE RFN MUSEUM

The place is now called FMV Vidsel Test Range. For example the museum shows the development of missiles from 1958.

For information call
+46 929-371 11

THE BAKERY MUSEUM

Here you will learn more about the local bakery enterprise, the history of Polarbröd and the baking craftsmanship that has been preserved since the turn of the last century. Summer opening hours, June 27-August 12-Monday-Friday, 11 AM to 3.30 PM.

FORESTRY AND LOG DRIVING MUSEUM

At Storforsen you will find a forestry and log driving museum. Experience everyday life in the olden days and see the work of foresters and log drivers. At the Storforsen nature reserve, there are around 20

buildings showing how forestry and log driving was done in Swedish Lapland. Here you will find tools, cabins, a charcoal kiln, a tar pit and stables.



Photo: Lars Thulin

TOP OF ÄLVSBYN

Join the challenge to reach at least 5 of ten mountain peaks in the Älvsbyn region. Buy an admission card, sold at Coop Extra Älvsbyn or Hotell Storforsen. The card is 200 SEK for adults and free for children/youths under the age of 18. The mountain peaks are: Kålsberget, Död-Larsberget, Nattberget, Älgberget, Kvällsberget, Falkberget, Nakteberget, Alterberget and Vitberget. To participate in the prize draw, hand in your card at Coop Extra Älvsbyn

Katarina Sundman
+46 70-3540915

Barbro Nilsson
+46 70-6505653

SWEDISH LAPLAND HUNTING

A 4 day hunt for Swedish Lapland wild game in our grounds. You will have the opportunity to use our well trained, experienced horses. Hunting with pointer dogs and barking dogs. Accommodation on or directly adjacent to the hunting grounds.

Udda Äventyr
Stockfors
+46 929-51170
+46 70-5851171
contact@uddaeventyr.com
www.uddaeventyr.com

FOREST WALK

Experience our unique, ever-changing natural environment. We walk through the various biotopes of the local landscape. Look for animal tracks, we may spot the King of the Forest, the elk. We will also be looking at plants and in some places you can see ancient and cultural remains. Walks ranging from a few hours to a full day.

På Land och Vatten
Vistbacka 33
+46 929-21166

ÄLVSBY BOWLING ALLEY

Bowling and moonlight bowling.

Forum/Folkets Hus
Medborgargatan 2
+46 929-13534

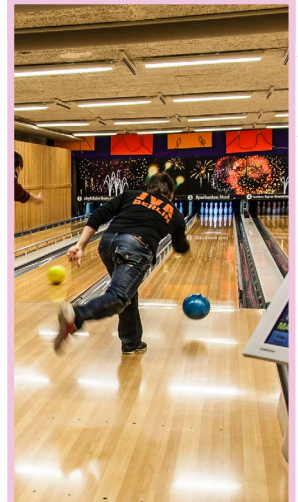


Photo: Marcel Köppe

Photo: Marcel Köppe



Shopping / Souvenirs

Photo: Coop Extra



BLOMMOR & TING

Florist and interior decoration shop.

Storgatan 10
+46 929-10075
blommoroting@spray.se

BOUTIQUE MIM

Clothes store for men and women alike.

Storgatan 10
+46 929-55333
Mimab.alvsbyn@telia.com

COOP EXTRA

Supermarket that also offers free Wi-Fi.

Storgatan 15
T+46 929-16870
www.coop.se

FLORISTEN

Skolgatan 27
+46 929-12250
floristenab@telia.com



Photo: Helenas med stil

GÅRDINGS JÄRNAFFÄR

The store sells everything from hardware and paint to toys, gardening tools and hunting and fishing items.

Storgatan 8, Älvsbyn
+46 929-55750
info@gardings.se

HANDPLOCKAT

The boutique offers a hand picked selection of interior decor, clothing, confectionery and jewellery. Open all days.

Storgatan 17
+46 929-10025
butikendhandplockat@hotmail.com

HAPPY

The store offers clothes for children, from newborns to teenagers, sizes 50 to 170.

Hantverksgatan 1
+46 929-55770
tillhappy@hotmail.com

HELENAS MED STIL

The store has a wide selection of women's clothing for all ages and sizes, up to size 56.

Storgatan 10
+46 929-10068
lisa@helenasmedstil.se

HERRMAN

The store has clothes for younger and older men alike.

Storgatan 10
+46 929-55770
tillherman@hotmail.com

ICA SUPERMARKET

Here can also pick up packages delivered by Postnord.

Skolgatan 17
+46 929-57999
www.ica.se

INTERIÖR & DESIGN

Interior design shop.

Hantverkargatan 1
+46 929-55770
www.obergsinterior.se

KONTORSTEKNIK

Office supplies and computers.

Medborgargatan 1
+46 929-12090
info@kontorsteknik.com
www.kontorsteknik.com

LINNERUTHS OPTIK

Optician.

Storgatan 10
+46 929-55077
Linneruth.optik@telia.com

RÖDA KORSET - MÖTESPLATS KUPAN

Second hand.

Storgatan 2-4
+46 929-14311

NILSSONS BUTIKEN

General store with Pick-up point for pharmacy deliveries and packages from Bussgods.

Köpmangatan 22, Vistträsk
+46 929-21224
info@nilssonsbutiken.se
www.nilssonsbutiken.se

NTM BUTIKEN

Clothes.

+46 929-14000
butikentnm-norr.se
Jägargatan 5

OK/Q8

Petrol station with shop and workshop.

Kyrkogårdsgatan 24, Älvsbyn
+46 929-10263
www.okq8.se

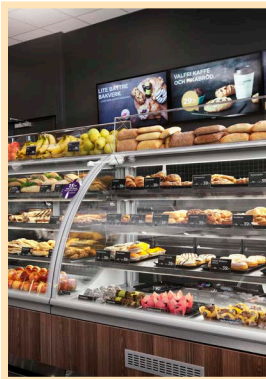


Photo: OKQ8

RADIOHUSET AUDIO VIDEO

Hifi and video.

Storgatan 14
+46 929-12450
alvsbyn@audiovideo.se

TURKLÖVERNS KIOSK BUTIK

Candy, soft drinks, ice cream.

Storgatan 6
+46 929-10529

ÄLVSBY BOKHANDEL

The store doesn't just sell books, but also musical instruments, sheet music, artist's supplies, photo accessories, frames, puzzles and games.

Storgatan 10
+46 929-10081
bokhandel@telia.com

ÄLVSBY ELEKTRISKA AB

A part of the Elkedjan chain.

Storgatan 35
+46 929-13525
info@alvsbyel.nu
www.alvsbyel.nu



Photo: Sportringen

ÄLVSBY SPORT & FRITID

Storgatan 16
+46 929-55000
Sport.fritid@alvsbyn.net
www.sportringen.se

APOTEK HJÄRTAT

Hantverkargatan 1
+46 771-405405
alvsbyn.storgatan@apotek-hjartat.se
www.apotekhjartat.se

TEMPO

General store and servicepoint in central Vidsel.

Östra Vidselvägen 2, Vidsel
+46 929-301 11

Accommodation

NORRSKENSUDDEN

Charming holiday houses with a nostalgic air, fully equipped for a self-catering stay. The guesthouse with its six beds has a beautiful lake view from all windows and the bakehouse, also with six beds, has a cosy fireplace to curl up by. There too, you can look out over the lake. Both houses have electricity, a refrigerator and freezer, a stove and a bathroom with a toilet and shower.

Skatan 4, 942 91 Visträsk
+46 70-1727199
www.norrskensudden.se



Photo: Norrskensudden

HOTELL STORFORSÉN/ STORFORSÉN CAMPING

Located at the foot of the largest unrestricted river in northern Europe. Here you can stay, eat and attend conferences in a breathtakingly beautiful environment. Hotell Storforsén is one of the most beautifully situated hotels in all of Sweden. The hotel offers exciting adventures, restful recreation, lovely hotel beds and effective conference hosting. You can choose between single rooms, combi rooms, double rooms, mini suites and suites. The Storforsén Camping campsite lies adjacent to Hotell Storforsén and offers both cottages and caravan parking.

Bredsel 105, 942 95 Vidsele
+46 929-721 00
info@storforsen.se
www.storforsen.se



Photo: Lennart Keikkonen



Photo: EFS Lillstrand

PÅ LAND OCH VATTEN

The Nattbergsstugan cottage used to be a resting cottage for Royal Foresters. They would come there to rest, hunt and fish. This cottage has now been renovated and slightly modernised, however, it still retains the old atmosphere. The cottage has two rooms and a kitchen. A conference room with a cosy fireplace, a common room suitable for smaller conferences and dinners and a kitchen equipped with both a wood-burning stove and an electric one, running water and mains drainage. Located 30 km west of Älvsbyn towards Arvidsjaur. Two six-bed cottages available for hire. Fully equipped kitchen, toilet and shower. Sauna and outdoor hot tub available for hire.

+46 70-605 74 79
www.plov.se



Photo: På land och vatten

SELHOLMENS CAMPING

Campsite for tents, caravans and cottages with a fantastic view of the Pite River. Log cabins with basic kitchen supplies, one allergy certified. Within walking distance of shops and restaurants. Service building with amenities, barbecue sites, a bathing beach, walking and running trails.

Campinggatan
+46 72 7041094
selholmen@gmail.com

EFS LILLSTRAND

Located about 6 km from central Älvsbyn along road 94 towards Arvidsjaur, beautifully situated by Lake Lillkorsträsket. Suitable for courses and camps, accessible to people with disabilities. There are two four-bed apartments here with refrigerators, mini kitchens and kitchen supplies, available for hire during parts of the summer. Access to shower and toilets. A total of 40 beds available in the hostel-standard rooms and apartments. The campsite is open to caravans and camping all summer.

Lillstrand 12, +46 929-200 66
www.kyrktoget.se/lillstrand



Photo: Marcel Köppe

POLAR HOTEL

Located in central Älvsbyn, 82 rooms, 150 beds. Conference room for up to 60 people. The hotel has a sauna, a gym area and table tennis. Swimming baths, cinema, ski tracks and stores nearby.

Storgatan 29
+46 929-557 40

SKATAUDDEN

Located at the scenic Lake Lillkorsträsk, about 5.5 km from Älvsbyn. Modern cottages with a fantastic view of the lake. You can "live at the farm" and follow the everyday life and work of a farmer. Adjacent to the lake you will find canoes, a campfire site and a wood-burning sauna raft.

Lillkorsträsk 21
+46 929-134 06
www.skataudden.se

ÄLVSBY FOLKHÖGSKOLA

Älvsby Folkhögskola offers accommodation in single, double or multiple bed rooms.

Ngrensvägen 28
+46 929-723 00
www.afhs.nu



Photo: AFHS

ÖVRABYNS BOENDE

Located about 3 km from central Älvsbyn. Rural environment just next to the Dite River. Chickens on the farm. Close to fishing, the river and a riding school. Övrabyns boende consists of a light, spacious apartment with two bedrooms, a living room, toilet, shower and kitchen. Self-catering. Dogs are welcome.

Övrabyvägen 26
+46 929-230 54
www.ovrabynsboende.se



Photo: Marcel Köppe

Map of

MIDNIGHT SUN
IN THE SUMMER

Swedish Lapland



Welcome to Sweden's northernmost destination!

In Swedish Lapland you will find unique arctic experiences. Thanks to the warm Gulf Stream, here high up by the Arctic Circle, you can experience seasons with great contrasts between polar nights with sparkling northern lights in a white winter landscape and warm summers filled with swimming and hundred days without night under the midnight sun. In the east – a 300-km coastal stretch facing the world's largest brackish water archipelago, with thousands of islands. Sandy beaches, fishing camps and unique produce. In the west – vast mountains, brooks with water so clean you can drink from them and lots of adventures around the corner. In between the quiet, enigmatic, open-handed forest and river valleys from Skellefte River in the south to Torne River in the north-east, all with their unique distinctive characteristics to offer. Traditions and cultures are strong here, and love of nature is even stronger. This is our everyday-life, and we invite you to share it with us. www.swedishlapland.com

Swedish Lapland®



ÄLVSBYN

For more information contact Älvsbyns tourist information
+46 929 10860, Storgatan 27, Älvsbyn, Tourist information in
Storforsen nature reserve (summer time) turistinfo@alvsbyn.se
www.alvsbyn.se/visit

Information places: OKQ8, Gulf, Polar Hotel, Hotell Storforsen,
Train station, Fluxen, Tempo Vidsele



EUROPEAN
UNION
European Regional
Development Fund