

ÄLVSBYN

the destinations of
SWEDISH
LAPLAND
YOUR ARCTIC DESTINATION

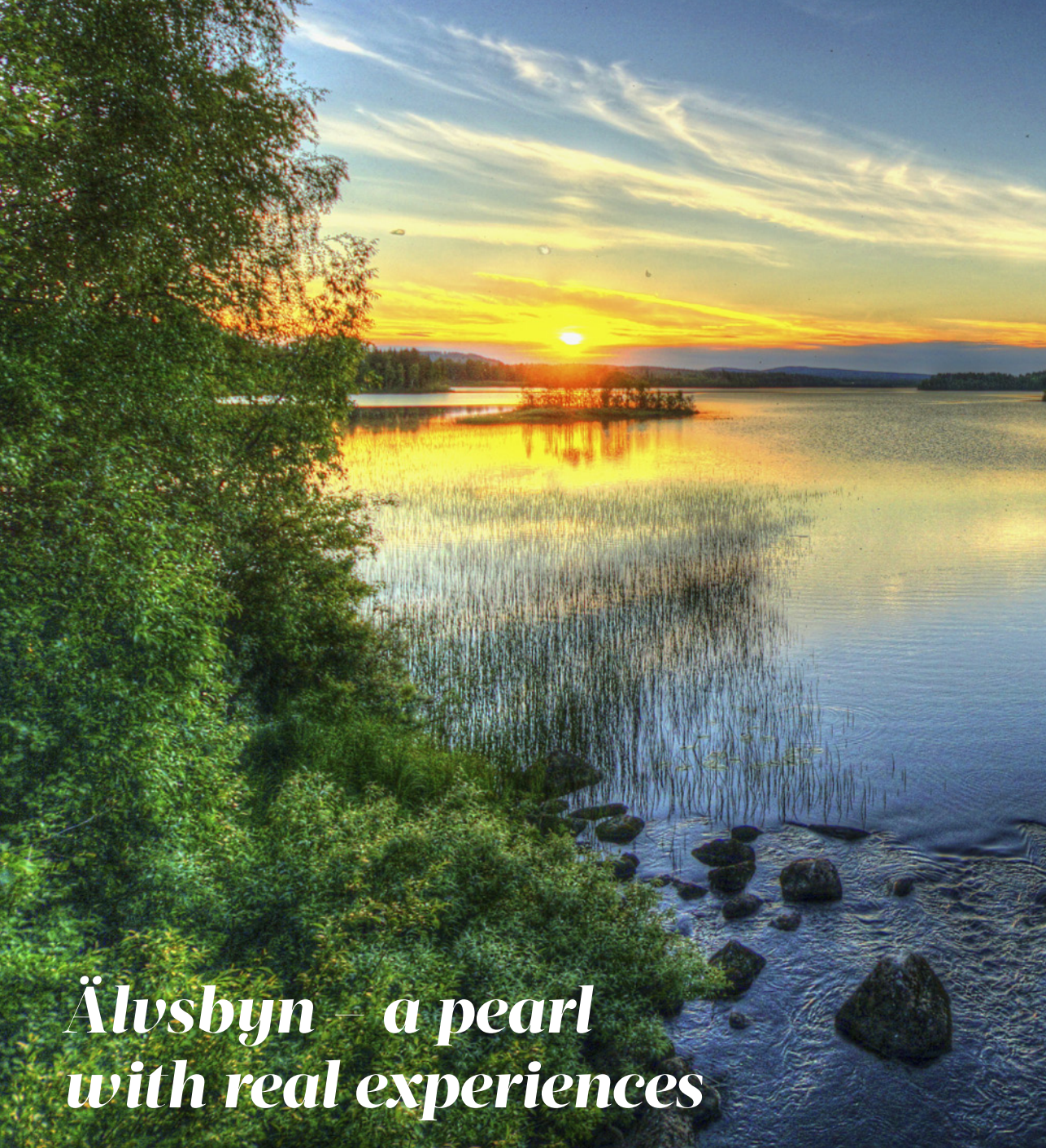
summer/autumn 

EXPERIENCE OUR
BRIGHT SUMMER NIGHTS

Storforsen
WILD, MIGHTY
AND MAGICAL

Experience a string
of adventures and activities

World-class water



Älvsbyn – a pearl with real experiences

LIKE A PEARL Älvsbyn lies softly nestled between forested mountains, next to the azure waters of the river. The region also boasts infinite wide expanses, old-growth forests, open landscapes, lakes, mountains, rivers, streams, marshes and the mighty Storforsen rapids that attract hundreds of thousands of visitors every year.

Älvsbyn is a paradise for nature lovers, with all the services you need very near, in the main town. There is great species diversity in both flora and fauna. The film industry has also been attracted by Älvsbyn's

natural beauty. Rolf Lassgård, Lena Ohlin, Mikael Persbrandt, Sven-Bertil Taube and Lennart Jähkel have been here to shoot films such as: *Jägarna*, *En enkel till Antibes*, *Grabben i graven bredvid*, *Hotet*, *Hypnotisören* and many others.

TV-series have also been produced here and international film crews have visited Älvsbyn to find suitable locations for their projects.

Älvsbyn's coat of arms features a sun, the so-called triple mountain, and a wavy fess against a blue background. The triple mountain and the wavy fess sym-



Photo: Mikael Jonsson

bolise the region's nature in the shape of mountains and water. The sun is an ancient chemical symbol for gold and is often used to represent it in heraldry (coats of arms, their symbols, their history and how to regulate and describe them).

Olaus Magnus's work from the 14th century showing the geography of the Nordic countries, *Carta Marina*, suggests that there is a gold deposit in the area. That's why the sun features on the coat of arms. No one has ever been able to find the deposit in question. Perhaps it's left for you to find? What's certain

is that there are many golden opportunities here for experiences and activities.

Geographically Älvsbyn is located in the southern part of Swedish Lapland, 47 km south of Boden, 65 km west of Lulea and 50 km north-west of Piteå. The nearest airport is in Lulea, 60 km from Älvsbyn. As you can see there is plenty to discover in Älvsbyn and this is where you'll find information on where to go and what to do.



Photo: Sofia Lundberg

The largest rapids in Europe and the land of a hundred lakes

ÄLVSBYN IS CRISS-CROSSED by hundreds of lakes and streams. The widest and mightiest is the Pite River, winding its way through the region like a main artery. Its source are lakes located at the Sulitelma massif, by the Norwegian border.

In Bredsel, 40 km west of the main town, the river showcases Europe's largest unregulated rapids, Storforsen, with a total fall height of 82 metres.

Along the final two kilometres of the rapids the river falls no less than 60 metres, creating a wonderful and dramatic landscape that has fascinated man for thousands of years. The average water flow is around 250 cubic metres per second.

Storforsen never freezes, even if temperatures sink towards minus 40 C in winter. The powers are so great that they can't be subdued, not even by King Bore.

Storforsen attracts more than 150,000 visitors every year.

Near the rapids there is an easily accessible nature reserve offering unique surroundings. Apart from the rapids themselves the reserve also features a 'dead fall', giant pits, ravines and lagoons with rare plants. Taking a dip in one of the lagoons is a popular pastime.

Further downstream are the lovely Fällforsen rapids, a steep nine-metre fall, like a giant's step. Fällforsen has served as background to many film scenes. Sven-Bertil Taube stops by the rapids in the film 'En enkel till Antibes', for example.

Älvsbyn's nature also has many lakes to offer, for bathing and for fishing. Swimming through a mirror-like surface on a bright summer's night is summer romance at its best.

Take a car or bike ride to find your favourite lake. One idea is to travel along the so-called Arvidsjaur road towards Korsträsk and Visträsk. Lakes and waters are lined up like pearls on a string.



Photo: På Land och Vatten

Breathtaking white-water rafting

Experience the Pite River in a different way through white-water rafting. Let the power of the water take you through the rapids. The company På Land och Vatten runs daily tours from May to September. The normal tour takes around two hours. Longer trips can be arranged, as well as food and snacks.



Photo: Ulrik Bylander

This is where they bite

If you are interested in fishing the opportunities are many. You can buy your own fishing licence and go to one of the rivers in the area. The Pite River has a lot to offer, fishing for salmon, trout, grayling, pike and perch. Other lakes and streams are also well worth a visit.

At Djupträsket, with arctic char, trout and grayling, there are caravan pitches, a cabin open to the public, shelters and boats to borrow.

If you want more advanced fishing På Land of Vatten and Naturfiskeguiden (Kaj Kottelin) both offer guided fishing tours on request, in running water or still water. One thing is for sure: your fishing experience will be set in great surroundings!

Fishing licences can be purchased at: Gulf, OKQ8, Gårdings Järnaffär, fiskenord.se, Storforsen shop, fiskekort.se.

World-class water

The tap water in Älvsbyn is world-class. The Swedish food agency is investigating if it could be classed as natural mineral water. If so, the inhabitants will be the first in the world to get their mineral water on tap. The tap water comes from a spring that is famous for its excellent quality. The same water is used by the Nyckelbryggerier brewery.



Photo: ÅPhoto



A cooling dip

There are plenty of bathing spots around. There is one in town, by Selholmens Camping. Lillstrand, Korsträsk, Vidsel, Visträsk and other villages also have ideal spots for a swim. By Storforsen you can cool down in streams and lagoons. Along the river there are plenty of nice places to stop for a swim. But respect the running water and remember that going swimming is at your own risk.

Auto safari

Animal life along the waters in Älvsbyn is multifaceted. If you head out early you might be lucky and spot both beaver and otter. There is also a rich bird life. Along the streams you'll find an abundance of plants.



Photo: Nordik Way

Scenic kayaking

Are you looking to experience nature around Älvsbyn from a kayak? Then get in touch with Nordik Way in Avaträsk outside Visträsk. The company is run by French entrepreneurs. Your kayak tour can be combined with fishing and landings in surroundings filled with experiences.



Photo: Anneli Olofsson

Enchanted forests and high mountains

Moorland spotted orchid.



Photo: Anneli Olofsson

THERE ARE AS MANY as 17 nature reserves in the region. Head into enchanted forests and climb peaks with wondrous views. You can experience the stunning nature in many ways: go hiking, horseback riding, travel by car or even in a glider.

The forests and marshlands are filled with riches: cloudbberries, arctic brambles, lingonberries, blueberries, wild raspberries and lots of mushrooms. A pantry filled with free delicacies.

Animal life is also plentiful. If you are lucky you can spot elk, bear, reindeer, eagle and perhaps a lynx during your visit. The ground is covered in a species-rich flora with unique biotopes.

The nature reserve Rackberget, only a few kilometres from the town, includes many beauties such as tower mustard, hairy rock-cress, red baneberry, baneberry, February daphne and lily-of-the-valley. Several orchids grow on the mountains, among others the

early fairy slipper, the scented lesser-butterfly orchid, the mysterious ghost orchid and the beautiful moorland spotted orchid. Along a stream in the western part you can find the rare Lapland buttercup and a huge stand of the magnificent ostrich fern. It's a paradise for plant lovers.

There are some very old Scots pines up on Rackberget, up to 500 years old. Fires have raged down the forest on the slopes several times. There are stumps left from pine trees that survived nine such fires. On average the forest burns every 60 years and pines are left with wounds in their bark, but they survive.

Rackberget is only one example. Other nature reserves are: Arvidsträskberget, Dubblabergen, Enstakaberget, Globerget, Gardliden, Kantaberget, Djupträsket, Langträskberget, Nakteberget, Rävabacken, Storberget, Storforsen, Vilhatten, Vistjärnliden, Vitberget and Aträsk.



Photo: Marcel Köppa

Adventure with real horse powers

It's easy to experience nature on horseback in Älvsbyn. The company Udda Äventyr lets you be a cowboy for the day, paired with unforgettable experiences. We guarantee this is an experience you'll never forget. Udda Äventyr has around 20 guest horses, all of them western trained and fully equipped with quality saddles, saddle bags and bed rolls. You can borrow a hat, a coat and chaps to get into the mood.

There is even more horse power. The company Canis Hästkrafter offers riding tours all year round in the forests and mountains around Älvsbyn. The tours fit both beginners as well as professionals.

A kingdom of contrasts

Älvsbyn has a typical continental climate. Cold, dark winters and warm, bright summers. That means Älvsbyn often snags two number one spots in Sweden: coldest in winter and warmest in summer. It truly is a kingdom of contrasts.

The early bird catches the worm

Are you up early in the mornings? Go on a safari in the region, on a bike or by car. You'll discover plenty of beautiful things. The region around Älvsbyn is a living zoo. An early-morning safari can land you encounters with elk, bear, reindeer, eagle and many other species. Take your time to reflect on the wonderful nature all around you.



Photo: Mikael Jonsson

Älvsbyn takes the lead

Vitberget in the municipal area is the highest peak in North Bothnia. Vitbergsknacken, known as "Knacken", stands 594 metres tall. The peak is called "the tower" by the locals, because there used to be a fire lookout tower on top. The eastern part of Vitberget is filled with little streams leading to the marshland Hålbäcksmyrorna. A very rare lichen has been found near one of the streams. It's called old man's beard and grows in long stems on fir trees. Old man's beard can only be found in a handful of areas in North Bothnia and its presence indicates that the forest is very old and very rare.

Top of Älvsbyn is a yearly competition where you try to climb as many peaks as possible, winning great prizes. It's a way of getting more people out and about, discovering the amazing nature in Älvsbyn, and to promote health. Why not participate?

Photo: Ameli Olofsson



Elk hunting with dogs

If you are interested in hunting the company På Land och Vatten arranges a traditional elk hunt in the heart of the forests in Swedish Lapland. The hunting grounds are 1,550 hectares, partly hilly, and contain open clear-cut areas and old-growth forest. It's a typical Arctic landscape with marshlands and streams between mountains. The package includes five days hunting and accommodation with dinner at the wilderness camp in Nattberg. På Land och Vatten also run courses for those who want their own hunting licence.



Photo: Marcel Köppa

Beaver evening and cloudberry safari

This is your chance to see the mythical beavers. They are easiest to spot in the evenings, helped by guides from På Land och Vatten. The same company also offers a cloudberry safari, to help you find the marshland gold. All the participants get a jar of exclusive cloudberry jam.



Photo: Lennart Kekkonen

From the Stone Age to the most modern town in Sweden

THE FIRST HUMANS settled in Älvsbyn 7,000 years ago. In those days the sea reached all the way to Finnäset near the village Manjärvi. On the hill there are ancient remains that are one-of-a-kind in Europe. Archaeologists have found the remains of a hut floor, around 25 m². But what really stands out on Finnäset are the graves that were found. Excavations show that the interior of the tombs was dyed with red ochre, not found anywhere else in Europe around that age. That makes Finnäset unique.

Thanks to the red sand the archaeologists could see a clear outline of a skeleton that was long gone. The person buried would have been around 165 cm tall and 25–35 years of age. After the excavation the tomb was restored. Remains from ringed seal and various kinds of fish tells us what they used to eat. Informative boards tell the story of hunting pits used to trap mainly various kinds of deer, but also other types of traps. Near the location there is a fireplace with seating and a table with benches, perfect for a picnic.

Between 1936 and 1947 Laver was the most modern town in Sweden. It was constructed around the copper mine that was in operation at the time. The inhabitants had running water, central heating, water

closets, electricity and electric cookers. In this small village with 350 residents there was also a public bath, a cinema, solarium and a modern street layout with street lights. This at a time when most others had an outhouse and a wood or gas stove.

When the mine closed the houses were taken down and moved, but foundations and streets remain, as well as the large headframe. Informative boards with photographs keep the memory of the village alive.

Laver is probably the ghost town that served as inspiration for the fictional ghost town Mervas in Elisabeth Rynell's novel "Till Mervas".



Bredsel Galleri gives you memories for life

Bredsel Gallery features a photo exhibition by international photographer Mat Richardson, including nature photographs from the area. The gallery also houses a working photo studio. Those interested can participate in workshops/a photo school with accommodation provided in a picturesque log cabin next door.



Photo: Älvsbynews.se



Photo: Bensinmuseet

The Petrol Museum is a trip down memory lane

Älvsbyn has always been big on engines. The enthusiast and founder of the Petrol Museum, Per Olof Lindroth, has Sweden's largest exhibition of petrol pumps from the 1920s through to the 1960s and other items like spare parts, adverts and motor magazines. You'll find the Petrol Museum on the Altuna industrial estate in Älvsbyn.

Culture
AND
HISTORICAL
PEARLS

The Bakery Museum – a tasteful experience

Älvsbyn has a long bakery tradition. It is no coincidence that one of Sweden's largest bakeries, Polarbröd, is located here. If you want to experience what bread tasted like a hundred years ago you should visit the Bakery Museum. Three generations of bakers, the Nilssons, used to work here. This is also where the ten-pence bread was created, the precursor of today's Polarkaka. The museum is open during summer.



Photo: Älvsbynews.se



Photo: Polarbröd



Photo: Polarbröd

Summer of 1920. The Nilsson family in front of the bakery with residence on the top floor. The man with the dog is Frans Gustav Nilsson. His mother Hilda is sitting on the chair. Frans Gustav's wife Anna is holding their son Karl in her arms. The smallest boy in the picture is Gösta Nilsson, founder of Polarbageriet.



Photo: Anneli Olofsson

Comfortable or adventurous accommodation

VISITING ÄLVSBYN there are lots of different accommodation options available – comfortable, or more adventurous. There is something for everyone. Perhaps you want to stay somewhere peaceful and quiet, near nature. Where the forest and all its treasures is just around the corner. Wake up after a good night's sleep, enjoy a cup of coffee on the porch and take a morning swim in the lake. Or perhaps you prefer waking up to a tasty breakfast buffet, then having a go at all the activities on offer near your hotel. Whatever you prefer there are plenty of charming, welcoming options in the area.



Photo: Anneli Olofsson



Photo: Peter Lundberg

Polar Hotel

Polar Hotel is located in the centre of Älvsbyn with easy walking distance to shopping and service.



Photo: På Land och Vatten

På Land och Vatten

If you want to experience the vast nature but preferably with a roof above your head you can rent accommodation in Nattberg and Åkroken through På Land och Vatten. Staying here means you'd be near the activities the same company organises in the area.



Photo: Peter Lundberg

Hotell Storforsen

Storforsen Hotel is located in Bredsel, with an amazing view of the mighty Storforsen rapids. There is a campsite as well with cabins available for rent. From the hotel and campsite it is easy to get to Storforsen nature reserve.



Photo: Norrskensudden

Norrskensudden

Norrskensudden provides accommodation near the great wide open. It's located in a beautiful setting with a view of the lake Västra Muskusträsket.

Selholmens camping

Just by the Pite River you'll find Selholmens campsite, a lovely location with a great view of the river. Choose between basic cottages, caravans or tents. The campsite is near the centre of town and right behind it there's a nice jogging track.

There is also accommodation available for rent through individual owners, or you could camp in the wild. There are several suitable spots, both for tents and camping vans. Just remember to tidy up before you leave and respect the rules of the right of public access. Be gentle with all living things, plants and animals alike.



Photo: Annell Olofsson

Älvsbyn – a retail pearl

CHARMING AND ACCESSIBLE. Shopping in the centre of Älvsbyn is a great experience in many ways. The main centre offers around 30 shops for your browsing pleasure. There are also plenty of cafés and restaurants around.

In the centre of Älvsbyn you get great service and everything is near. Some examples of what you can find are unique clothing stores, well-stocked grocery stores, a traditional ironmongery, the best sport and leisure shop in the region, an optician, audio/video, hobby shops, cafés, restaurants, a pharmacy and much more.

Come and discover Älvsbyn! Go on an excursion. Combine it with shopping and stopping at a café or restaurant. You'll be surprised!

The main town, known as “the Village” among the residents, is a charming place with all kinds of service in the centre and everything within easy walking distance.

It's easy, simple and pleasant to go shopping in Älvsbyn. We promise to take good care of you.



Photo: Marcel Köppe



Photo: Marcel Köppe





Photo: Marcel Köppe

An oasis in the middle of the village

Lomtjärnsparken is a park with a summer café in the middle of Älvsbyn. There are swings and other playground equipment available, as well as an outdoor arena. Flea markets are arranged here during the season.



Photo: Sterling Nilsson

Flea markets

Looking for a bargain? Then look around for local flea markets. Every year several "Loppisar" (flea markets) are arranged, for example around the events Visträskdagen and Vidseldagen.

WELCOME TO

Älvsbyn





Photo: Krister Palm

Taste buds

IN ÄLVSBYN there are plenty of places to stop for food or a snack. There is something here for all tastes: choose between à-la-carte restaurants or cafés depending on your mood. Or why not prepare a picnic basket and head into the countryside. Enjoy a really good cup of coffee made over an open fire.



Photo: Marcel Képppe

Bread on a stick

When you go on an excursion, baking your own 'bread on a stick' is a tasty option. Take a piece of the dough and roll it into finger-sized lengths. Wrap around a stick and cook over an open fire. The bread is done when it can be removed from the stick without sticking. Let a piece of butter melt inside the bread.

A recipe for bread on a stick:

- 5 dl wheat flour
- 0,5 tsp salt
- 0,5 tsp baking powder
- 2 dl water



Photo: Peter Lundberg

Food & Drink



Photo: Polar Hotel

Polar Hotel

Lunch buffet and à-la-carte restaurant.

Storgatan 29, Älvsbyn
+46 929-557 40
www.polarhotel.com

Konditori Centrum

A café with fresh pastries daily, from different kinds of biscuits to festive cakes made with love in our own bakery.

In the café section you can enjoy a good cup of coffee and cake. We also serve home-cooked hearty cuisine, fresh salads and sandwiches.

Storgatan 19, Älvsbyn
+46 929-100 24
info@centrumkonditori.se
Konditori Centrum on Facebook

Pizzeria Aramo

Pizza place with salads, kebabs, falafel, game, sandwiches and grilled dishes.

+46 929-100 03
Storgatan 10 D, Älvsbyn

Restaurant Venezia

Pizzas, grilled dishes, salads and à la carte.

+46 929-140 99
Storgatan 43 B, Älvsbyn

Pizzeria Paris

A restaurant that offers classic pizzas, salads and grilled dishes.

+46 929-555 17
Storgatan 14, Älvsbyn

Restaurant Fluxen

A restaurant that offers a classic buffet lunch with a main course, vegetables, coffee and dessert. You can also order grilled dishes and salad of the week.

+46 929-170 39
Skolgatan 23 C, Älvsbyn

Älvåkragrillen

+46 929-131 44
Älvåkra sports grounds, Älvsbyn

Trescorona Restaurant

In summer there is a conservatory with seating available. Pizzas, grilled dishes and à la carte available. Also open for lunch.

+46 929-129 64
Storgatan 4, Älvsbyn

Station kafé

Café with among other things home-baked goods.

Stationsgatan
+46 70-716 34 62

Storforsen Hotel

Restaurant with a view of the Storforsen rapids. Lunch, dinner buffet (summer buffet during season) and à la carte every day.

+46 929-721 00
Bredsel 105, Vidsel
www.storforsen.se

Kaniskrogen

At the foot of the ski slopes in Älvsbyn you will find family friendly Kaniskrogen. Have a meal in a lovely, relaxing environment by the open fire with a great view of the ski slope. Fully licensed.

The restaurant is always open when the ski slope is running in winter (also during upcoming summer activities).

Kanisberget ski slope, Älvsbyn
+46 929-172 02
www.kaniskrogen.se

Goy & Gee Thai och Grill

A restaurant that serves Thai food and a lunch buffet with a touch of Thailand. The youngest customers can choose from a children's menu. There is also an à-la-carte menu with dishes featuring pork, beef, chicken or prawns. Catering also available.

+46 929-600 11
Medborgargatan 3, Älvsbyn



Photo: Ekbergs konditori

Ekbergs konditori

A café with home-made pastries and cakes. Some dishes are also available to order.

+46 929-133 95
Storgatan 10 B, Älvsbyn

Heart to heart

A restaurant that serves kebab, pasta and Thai food.

+46 929-128 58
Storgatan, Älvsbyn

Sibylla Mix Burger Restaurant

The restaurant seats 47 people. Hamburgers, kebab and other dishes available.

+46 929-550 80
Storgatan 9, Älvsbyn

Summer café in Lomtjärnsparken

Café open in the park in summer, serving coffee, snacks and icecream.

Lomtjärnsparken

Pizzeria Tic Tac

In the middle of Vidsel, about 3.5 km from Älvsbyn. A restaurant with pizzas and grilled dishes as well as kebabs and salads. Outdoor seating in summer.

+46 929-340 02
Västra Vidselsvägen 1, Vidsel

Kaffestugan

Café open in summer in Storforsen nature reserve with typical northern dumplings ('palt'), grilled sandwiches, icecream and more.

+46 929-721 00

Älvsby Folkhögskola

Lunch restaurant with northern specialties. Open from the beginning of the autumn term until the end of June. During the school year the opening hours follow the school schedule.

+46 929-723 21
Nygrensvägen, Älvsbyn

Uddens hembageri

Small bakery with locally produced delicacies, pastries, cakes and bread.

Lillkorstråk 20
+46 929-138 59

Shopping

Boutique MIM

Clothing store for men and women.

+46 929-553 33
mimab.alvsbyn@telia.com
Storgatan 10

Coop Extra

Supermarket, gaming operations for Svenska Spel and ATG

+46 10-747 80 30
www.coop.se
Storgatan 15

Enmarks Musvagnar och Fritid

Camping accessories, parts, gas.

+46 70-243 45 01
Sågfors 6

Gulf

Petrol station with workshop and store.

+46 929-553 88
gulf@alvsbyn.net
Kyrkogårdsgatan 20

Gårdings Järnaffär

A shop that sells hardware, paint, wallpaper, flooring, toys, gardening equipment and hunting and fishing gear.

+46 929-557 50
info@gardings.se
Storgatan 8

Handplockat

Handplockat is a shop with a wide range of products such as interior design, clothes, sweets and jewellery.

+46 929-100 25
butikendhandplockat@hotmail.com
Storgatan 17

Handplockat Blommor och Trädgård

Florist's shop.

+46 929-47 44 47
Storgatan 17

Happy

This is the place to go for children's clothes, newborn up to teenagers.

+46 929-557 70
tillhappy@hotmail.com
Hantverksgatan 1

Helenas med stil

A shop with a wide selection of women's clothing for all ages and sizes.

+46 929-100 68
lisa@helenasmedstil.se
Storgatan 10

HerrMÅN

Clothing store with men's wear.

+46 929-557 70
tillherman@hotmail.com
Storgatan 10

ICA Supermarket

Supermarket and post office.

+46 929-579 99
www.ica.se
Skolgatan 17

Interiör & Design

Flooring, paint and wallpaper.

+46 929-557 70
www.obergsinterior.se
Hantverkargatan 1



Photo: Johannas hem & hobby

Johannas Hem & Hobby

A wide range of items related to craft and interior design.

+46 70-680 31 11
www.johannashemochhobby.se
Medborgargatan 7

Kontorsteknik

Office supplies and computers.

+46 929-120 90
info@kontorsteknik.com
www.kontorsteknik.com
Medborgargatan 1

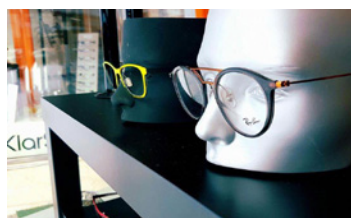


Photo: Linneruth Optik

Linneruths Optik

Optician and jewellery.

+46 929-550 77
linneruth.optik@telia.com
Storgatan 10

Nilssons Butiken

A general store with staple food items, clothes and shoes. Pharmacy and transport agent, service point.

+46 929-212 24
info@nilssonsbutiken.se
www.nilssonsbutiken.se
Köpmangatan 22, Visträsk

Noréns hushållsmaskiner Electrolux

Household appliances.

+46 929-107 87
Järnvägsgatan 6

NTM Butiken

A shop with workwear, leisurewear, children's clothing and shoes. The store offers optional printing on your workwear and caps.

+46 929-140 00
butikentnm-norr.se
Jägargatan 5

OK/Q8

Petrol station with workshop and store.

+46 929-102 63
www.okq8.se
Kyrkogårdsgatan 24

Radiohuset Audio Video

Home electronics.

+46 929-124 50
alvsbyn@audiovideo.se
Storgatan 14

Röda Korset – Mötesplats Kupan

Second-hand shop.

+46 929-143 11
Storgatan 2-4

Storforsen Shop

The place to go for local craft and delicacies.

Storforsen Nature Reserve
+46 929-100 60

Tempo

Supermarket and service point in the centre of Vidsel.

+46 929-301 11
Östra Vidselsvägen 2, Vidsel

Älvsby Elektriska AB

Household appliances shop, part of ELON.

+46 929-135 25
info@alvsbyel.nu
www.alvsbyel.nu
Storgatan 35

Älvsby Sport & Fritid

Sports shop.

+46 929-550 00
sport.fritid@alvsbyn.net
www.sportringen.se
Storgatan 16

Pharmacy Hjärtat

+46 771-405 405
alvsbyn.storgatan@apotekhjartat.se
www.apotekhjartat.se
Hantverkargatan 1

Accommodation



Photo: EFS Lillstrand

EFS Lillstrand

Located around 6 km from Älvsbyn centre along route 94 to Arvidsjaur, a beautiful location by the lake Lillkorsträsket.

Ideal for courses and camps, wheelchair adapted.

There are two four-bed apartments with fridge, kitchenette and kitchenware available for rent during some parts of summer. Access to shower and bathrooms. In total there are 40 beds available with youth-hostel standard.

The campsite is open for caravans and tents throughout summer. Call in advance to book.

Lillstrand 12
+46 929-200 66

www.kyrktorget.se/lillstrand



Photo: Lennart Kekkonen

Storforsen Hotel Storforsen Campsite

Located at the foot of Northern Europe's largest, unregulated rapids. Stay, eat and meet in a landscape so visually overpowering it might just take your breath away. Storforsen Hotel is one of Sweden's most beautifully located hotels.

On offer here are exciting adventures, rest and relaxation, comfortable hotel nights and efficient events. Choose between single rooms, combi rooms, double rooms, junior suites and suites.

Storforsen Campsite is located next to the Storforsen Hotel with cabins and caravan pitches.

Bredsel 105, 942 95 Vidsel
+46 929-721 00
info@storforsen.se

Nordik Way

At Nordik Way you stay in cabins with private shower and WC and a fully-equipped kitchen. The cabin has four beds and consists of a bedroom with two single beds and a sofa bed in the lounge. Located about 23 km from Älvsbyn on route 94.

Avaträsk 201
+46 72-2852487,
nordikway@gmail.com
www.nordikway.com

Norrskensudden

Charming holiday houses bringing you back in time, fully equipped for self-catering accommodation.

The Guest House with space for six has beautiful lake views from all windows and the Bakery, also with space for six, has a cosy fireplace. There is a view of the lake here, too.

Both houses have electricity, fridge/freezer, cooker and a bathroom with shower.

Fishing available just next door.

Skatan 4, 942 91 Visträsk
Sara +46 70-172 71 99
www.norrskensudden.se

På Land och Vatten

Nattbergsstugan used to be a recreational home for state foresters. They came there to relax and go hunting and fishing. The house has been renovated and modernised, but retains an atmosphere of the olden days.

There are two rooms and a kitchen. One of the rooms is a conference room with a cosy fireplace, the other a living room for smaller conferences or dinners. The kitchen is equipped with a wood stove and an electric cooker, running water and a drain. It's located 30 km west of Älvsbyn towards Arvidsjaur.

There are two six-bed cabins available with fully equipped kitchens and bathrooms with shower. Sauna and hot tub can also be rented.

Nattberg
+46 70-605 74 79
Information: www.plov.se

Selholmens Camping

Camping for caravans, tents and cabins with great views of the Pite River. Log cabins with basic kitchen equipment, one of them allergy adapted. Walking distance to shopping and restaurants. Service house, kiosk, barbecues, bathing water, jogging tracks. Open during summer

Campinggatan
+46 929-172 05,
+46 72-704 10 94
selholmen@gmail.com

Polar Hotel

Located in central Älvsbyn, 82 rooms, 150 beds. Conference rooms for up to 60 people. The hotel has a sauna, a gym, table tennis and à-la-carte restaurant. Near the public bath, cinema and shops.

Storgatan 29
+46 929-557 40
www.polarhotel.com



Photo:Marcel Köppe

Skataudden

Located in beautiful Lillkorsträsk, around 5.5 km from Älvsbyn. Modern cabins with a wonderful view across the lake. "Stay on a farm" and participate in the farming life. By the lake canoes are available and there is a barbecue spot and a wood-burning sauna raft.

Lillkorsträsk 21
+46 929-134 06
www.skataudden.se

SvU-SanU Fritidshus & Friluftsliv AB

In Vidsel, some 5 km from Storforsen, SvU-SanU offers accommodation in villas and cabins.

+46 76-819 80 72, +46 76-819 80 99
www.nordschweden-ferienhaus.se



Photo:Marcel Köppe

Övrabyens boende

Located about 3 km from the centre of Älvsbyn. Rural surroundings next to the Pite River. The farm has chickens. Near fishing waters, the river and a riding school. Övrabyens boende consists of a bright, spacious apartment with two bedrooms, a living room, a kitchen and a bathroom with shower. Self-catering. Dogs welcome.

Övrabyvägen 26
+46 929-230 54
www.ovrabyensboende.se

Activities

Fishing for perch and pike

Guided fishing experience in wonderful surroundings.

Naturfiskeguiden
Strandvägen 15
+46 73-183 95 82
kaj@naturfiskeguiden.com
www.naturfiskeguiden.se



Photo: Canis hästkrafter

Relaxing horseback riding

Forest riding on winding paths up and down the mountains.

Canis Hästkrafter
Lillkorstråk 201
+46 70-573 26 66
annika@canishastkrafter.se
www.canishastkrafter.se

Fly fishing course

Learn about casting techniques, insects, nature and water, and how to spend time in nature while respecting it. We help you develop your spinning technique and gain knowledge for a better fishing experience.

Naturfiskeguiden
Strandvägen 15
+46 73-183 95 82
kaj@naturfiskeguiden.com
www.naturfiskeguiden.se



Photo: Ulrik Bylander

Fishing experience under the light of the midnight sun

A guided fishing experience in the unspoiled nature by the Pite river where grayling and trout hide behind rocks and at the bottom of deep pools. Experience the flowing waters of the Pite River and spoil yourself with an unforgettable fishing adventure.

Naturfiskeguiden
Strandvägen 15
+46 73-183 95 82
kaj@naturfiskeguiden.com
www.naturfiskeguiden.se

White water rafting in the Pite River

Join us for a once-in-a-lifetime experience. We do daily runs from May through to September. The normal trip takes about two hours. We can also run longer distances on request.

På Land och Vatten
Vistbacka 33
+46 929-211 66
+46 70-605 74 79
info@plov.se
www.plov.se

Fishing for perch and pike

We go fishing for perch and pike in a nearby lake. Then we have lunch outdoors and finish the day with coffee. Fishing equipment, fishing licence, lunch, coffee and cake, and a guide all included. Open waters from May to October.

På Land och Vatten
Vistbacka 33
+46 929-211 66
+46 70-605 74 79
info@plov.se
www.plov.se

VIP-fishing

Go fishing somewhere on your own. Somewhere with plenty of rainbow trout, grayling and trout. The group has a catch guarantee. Fishing equipment available. Then lunch or dinner at Nattbergstugan. This combines nicely with the sauna and hot tub.

På Land och Vatten
Vistbacka 33
+46 929-211 66
+46 70-605 74 79
info@plov.se
www.plov.se

Beaver Safari

We take a walk along running water to get a peek at the mythical beavers. The best time to go looking is in the evening. We also take a break to make coffee over an open fire and have a light snack.

På Land och Vatten
Vistbacka 33
+46 929-211 66
+46 70-605 74 79
info@plov.se
www.plov.se

The Trapper Path

Join us on a real trapper's path. We show traps and trapping methods of all kind. How to place them, how they are used and so on. We'll show you some old trapping techniques.

På Land och Vatten
Vistbacka 33
+46 929-211 66
+46 70-605 74 79
info@plov.se
www.plov.se

Cloudberry Safari

During the second half of July until mid-August it is time to go hunting for the gold of the forest on these latitudes. We guide you to the cloudberry marshland. How and when they grow varies from year to year. It depends on weather and wind during spring and summer. You also get to take home a jar of cloudberry jam to use on special occasions. Be prepared for a half, or a whole day out. We guide all through summer even if it's not berry-picking season.

På Land och Vatten
Vistbacka 33
+46 929-211 66
+46 70-605 74 79
info@plov.se
www.plov.se



Photo: Sofia Lundberg

Forest Walk

Experience our unique and varied nature. We take you on a walk through the landscape and its various biotopes. Keep an eye out for animal tracks to perhaps catch a glimpse of the king of the forest: the elk. We also look at plants and in some locations we'll come across ancient remains and cultural traces. The walk can be for an hour or the entire day.

På Land och Vatten
Vistbacka 33
+46 929-211 66
+46 70-605 74 79
info@plov.se
www.plov.se

Fly fishing

Learn the basics of the noble art of fly fishing. We go fishing in small streams and large rivers.

På Land och Vatten
Vistbacka 33
+46 929-211 66
+46 70-605 74 79
info@plov.se
www.plov.se

Activities

Adventure riding

Adventure riding with an emphasis on adventure. We have our own horses, all western trained and equipped with quality saddles and other equipment necessary for a successful event. The tours range from day trips to twelve-day outings.

Udda Äventyr
Stockfors
+46 929-511 70, +46 70-585 11 71
contact@uddaaventyr.com
www.uddaaventyr.com



Photo: Udda Äventyr

Hunting in North Bothnia

This is a four-day hunting trip on our hunting grounds, looking for North Bothnian game. You're welcome to use our well-trained and experienced horses. Hunting with pointing and tracking dogs. Accommodation available at or near the hunting area.

Udda Äventyr
Stockfors
+46 929-511 70, +46 70-585 11 71
contact@uddaaventyr.com
www.uddaaventyr.com

Dog sleds

At Nordik Way you can experience dog sledding in summer as well as winter.

Nordik Way
Avaträsk 201, Visträsk
+46 72-285 24 87
www.nordikway.com
nordikway@gmail.com

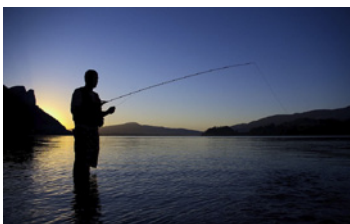


Photo: Nordik Way

Fishing

Experience the silence of the wild traveling by canoe in lakes and rivers. Hiking with dogs, fishing and learning how to prepare and cook your catch.

Nordik Way
Avaträsk 201, Visträsk
+46 72-285 24 87
www.nordikway.com
nordikway@gmail.com



Photo: Sofia Lundberg

Top of Älvsbyn

Join our challenge to climb certain peaks in the area. Starting cards are sold at Coop Extra Älvsbyn and Storforsen Hotel.

Katarina Sundman +46 70-354 09 15
Barbro Nilsson +46 70-650 56 53



Photo: Bensinmuseet

Petrol Museum

Sweden's largest exhibition of petrol pumps from the 1920s to the 1960s. The Petrol Museum is located on the Altuna industrial estate in Älvsbyn.

Information and opening hours:
+46 929-124 37, +46 70-378 21 60
www.caltex.nu

Mat Richardson Photography

Photography workshop with a professional photographer who has 20 years' experience of photography in the most beautiful places in the world. A workshop that among other things teaches you how to capture natural beauty. Mat also has a gallery in Bredsel where he exhibits his photos.

Bredsel
+46 70-667 44 01
www.matrichardson.com



Photo: Mikael Jonsson

Nature Orienteering

From June to August a Nature Orienteering course is set up with 20 different points of varying difficulty in forest terrain. You can buy a card to participate at Sportringen, Coop Extra and OKQ8.

Sture Norén +46 70-372 20 75

Museum of Forestry and Log Driving

At Storforsen there is a museum dedicated to forestry and log driving. Here you get an idea of what forestry and log driving was like and how it was done in times gone by. Within Storforsens nature reserve there are about twenty buildings showing how timber rafting and forest work was conducted in North Bothnia. Among other things there are tools, huts, a charcoal pile, a tar pit and living quarters.

The Laver Mine

The Laver mine is located around 50 km west of Älvsbyn and 10 km north of Nattberget along route 94. This used to be a copper mine and the village was Sweden's most modern when it was built in 1937.

The Bakery Museum

A museum that tells a story about the bakeries in the area, the history of Polarbröd and artisan bakeries preserved since the turn of the last century.

Open in summer.

+46 10-450 60 00



Photo: Anneli Olofsson

Älvsbyn Bowling Hall

Bowling and moonlight bowling.

Forum/Folkets Hus
Medborgargatan 2
+46 929-135 34

Map of

MIDNIGHT SUN
IN THE SUMMER

Swedish Lapland



Welcome to Sweden's northernmost destination!

In Swedish Lapland you will find unique arctic experiences. Thanks to the warm Gulf Stream, here high up by the Arctic Circle, you can experience seasons with great contrasts between polar nights with sparkling northern lights in a white winter landscape and warm summers filled with swimming and hundred days without night under the midnight sun. In the east – a 300-km coastal stretch facing the world's largest brackish water archipelago, with thousands of islands. Sandy beaches, fishing camps and unique produce. In the west – vast mountains, brooks with water so clean you can drink from them and lots of adventures around the corner. In between the quiet, enigmatic, open-handed forest and river valleys from Skellefte River in the south to Torne River in the north-east, all with their unique distinctive characteristics to offer. Traditions and cultures are strong here, and love of nature is even stronger. This is our everyday life, and we invite you to share it with us. www.swedishlapland.com

Swedish Lapland®



ÄLVSBYN

For more information contact Älvsbyns tourist information, + 46 929-108 60, Storgatan 27, Älvsbyn • Tourist information in Storforsen (open in summer time) turistinfo@alvsbyn.se • www.alvsbyn.se/visit

Informations places: OKQ8, Gulf, Polar Hotel, Hotell Storforsen, Train station, Fluxen and Tempo Vidsel.