



# VISIT ÄLVSBYN

the destinations of  
SWEDISH  
LAPLAND  
SWEDENS NORTHERNMOST DESTINATION

2021 / 2022 

*Experience*

OUR BRIGHT  
SUMMER NIGHTS  
AND CRISP  
WINTER DAYS

*Get ready*

for an adventure in the pearl of Norrbotten







## Älvsbyn – a pearl with real experiences

Photo: Mikael Jonsson

**LIKE A PEARL** Älvsbyn lies softly nestled between forested mountains, next to the azure waters of the river. The region also boasts infinite wide expanses, old-growth forests, open landscapes, lakes, mountains, rivers, streams, marshes and the mighty Stor-forsen rapids that attract hundreds of thousands of visitors every year. Älvsbyn is a paradise for nature lovers, with all the services you need very near, in the main town. There is great species diversity in both flora and fauna. The film industry has also been attracted by Älvsbyn's natural beauty. Rolf Lassgård,

Lena Ohlin, Mikael Persbrandt, Sven-Bertil Taube and Lennart Jähkel have been here to shoot films such as: *Jägarna*, *En enkel till Antibes*, *Grabben i graven bredvid*, *Hotet*, *Hypnotisören* and many others.

TV-series have also been produced here and international film crews have visited Älvsbyn to find suitable locations for their projects.

Älvsbyn's coat of arms features a sun, the so-called triple mountain, and a wavy fess against a blue background. The triple mountain and the wavy fess symbolise the region's nature in the shape of mountains

and water. The sun is an ancient chemical symbol for gold and is often used to represent it in heraldry (coats of arms, their symbols, their history and how to regulate and describe them). Olaus Magnus's work from the 14th century showing the geography of the Nordic countries, *Carta Marina*, suggests that there is a gold deposit in the area. That's why the sun features on the coat of arms.

No one has ever been able to find the deposit in question. Perhaps it's left for you to find? What's certain Photo: Mikael Jonsson is that there are many

golden opportunities here for experiences and activities. Geographically Älvsbyn is located in the southern part of Swedish Lapland, 47 km south of Boden, 65 km west of Luleå and 50 km north-west of Piteå. The nearest airport is in Luleå, 60 km from Älvsbyn.

As you can see there is plenty to discover in Älvsbyn and this is where you'll find information on where to go and what to do.



# Welcome to explore Älvsbyn!

## Summer, autumn, winter and spring!

Here you will find inspiration and learn more about what Älvsbyn has to offer in all seasons. From page 14 you find registers of experiences, food, accommodation and shopping.

## The event calendar

In the event calendar you will find current events taking place in Älvsbyn municipality.  
[visitalvsbyn.se/evenemang](http://visitalvsbyn.se/evenemang)

## A kingdom of contrasts

Älvsbyn municipality has around 8,000 inhabitants, 5,000 of them in the main town. There are many villages in the municipality and the largest three are Vidsel, Visträsk and Korsträsk. Älvsbyn has a typical continental climate. Cold, dark winters and warm, bright summers. That means Älvsbyn often snags two number one spots in Sweden: coldest in winter and warmest in summer. It truly is a kingdom of contrasts.

Visit Älvsbyn

SEE  
[VISITALVSBYNN.SE](http://VISITALVSBYNN.SE)  
FOR MORE  
INFORMATION





Welcome to Älvsbyn



# Summer and autumn

SUMMER AND AUTUMN IS a good time to head into enchanted forests and climb peaks with wondrous views. You can experience the stunning nature in many ways: go hiking, horseback riding, travel by car or even in a glider. The forests and marshlands are filled with riches: cloudberry, arctic brambles, lingonberries, blueberries, wild raspberries and lots of mushrooms. A pantry filled with free delicacies. Animal life is also plentiful. If you are lucky you can spot elk, bear, reindeer, eagle and perhaps a lynx during your visit.



Photo: Marcell Köpcke



Photo: Sofia Lundberg

## The largest rapids in Europe and the land of a hundred lakes

Älvsbyn is criss-crossed by hundreds of lakes and streams. The widest and mightiest is the Pite River, winding its way through the region like a main artery. Its source are lakes located at the Sulitelma massif, by the Norwegian border.

In Bredsel, 40 km west of the main town, the river showcases Europe's largest unregulated rapids, Storforsen, with a total fall height of 82 metres.

Along the final two kilometres of the rapids the river falls no less than 60 metres, creating a wonderful and dramatic landscape that has fascinated man for thousands of years. The average water flow is around 250 cubic metres per second.

Storforsen never freezes, even if temperatures sink towards minus 40 C in winter. The powers are so great that they can't be subdued, not even by King Bore.

Storforsen attracts more than 150,000 visitors every year and offers a majestic experience every time, no matter how often you visit!

Älvsbyn's nature also has many lakes to offer, for bathing and for fishing. Swimming through a mirrorlike surface on a bright summer's night is summer romance at its best.

Take a car or bike ride to find your favourite lake. One idea is to travel along the so-called Arvidsjaur road towards Korsträsk and Visträsk. Lakes and waters are lined up like pearls on a string.



Photo: Anneli Olafsson





Photo: Ulrik Bylander

## This is where they bite

If you are interested in fishing the opportunities are many. You can buy your own fishing licence and go to one of the rivers in the area. The Pite River has a lot to offer, fishing for salmon, trout, grayling, pike and perch. Other lakes and streams are also well worth a visit.

At Djupträsket, with arctic char, trout and grayling, there are caravan pitches, a cabin open to the public, shelters and boats to borrow.

Fishing licences can be purchased at: Gårdings Järnaffär, Gulf, OKQ8, Storforsens shop, sveaskog.se, fiskekort.se

## Älvsbyn takes the lead

Vitberget in the municipal area is the highest peak in North Bothnia. Vitbergsknacken, known as "Knacken", stands 594 metres tall. The peak is called "the tower" by the locals, because there used to be a fire lookout tower on top. The eastern part of Vitberget is filled with little streams leading to the marshland Hålbäcksmyrorna. A very rare lichen has been found near one of the streams. It's called old man's beard and grows in long stems on fir trees. Old man's beard can only be found in a handful of areas in North Bothnia and its presence indicates that the forest is very old and very rare.

Top of Älvsbyn is a yearly competition where you try to climb as many peaks as possible, winning great prizes. It's a way of getting more people out and about, discovering the amazing nature in Älvsbyn, and to promote health. Why not participate?



Photo: Anneli Olofsson



Photo: Anneli Olofsson



Photo: ÅPhoto

## A cooling dip

There are plenty of bathing spots around. There is one in town, by Selholmens Camping.

Lillstrand, Korsträsk, Vidsel, Visträsk and other villages also have ideal spots for a swim. By Storforsen you can cool down in streams and lagoons.

Along the river there are plenty of nice places to stop for a swim. But respect the running water and remember that going swimming is at your own risk.

## An oasis in the middle of the village

Lomtjärnsparken is a park with a summer café in the middle of Älvsbyn. There are swings and other playground equipment available, as well as an outdoor arena. Flea markets are arranged here during the season.



Photo: Anneli Olofsson



Photo: Sterling Nilsson

## Flea markets

Looking for a bargain? Then look around for local flea markets. Every year several "Loppisar" (flea markets) are arranged, for example around the events Visträskdagen and Vidseldagen.



Photo: Anneli Olofsson

There are as many as 17 nature reserves in the region. Read more about them on the county administrative boards website:

[www.lansstyrelsen.se/norrbottn/besoksmal](http://www.lansstyrelsen.se/norrbottn/besoksmal)





Photo: Anneli Olofsson

# Winter and spring

NOT MUCH COMPARES to a really lovely winter's day with warm rays of sunshine and sparkling snow. Älvsbyn is a winter paradise for the entire family, with its white-clad landscape, snow-covered trees, starry, crisp evenings and nights that give you an opportunity to marvel at the magically billowing northern lights, a stark contrast to the summer's midnight sun. Our 17 nature reserves, numerous mountains and many rivers let you experience wilderness tours on horseback, snowmobile trails, winter fishing, scenic skiing trails and slopes.

Yes, nature has been generous to Älvsbyn, a place graced with many loving nicknames that all describe a northern countryside at its best. As early as 1930 author Gustav Zohn described Älvsbyn as "the Pearl of Norrbotten" in his memoirs, travelling through the region. The metaphor is based on Älvsbyn from above, comparing it to a gem. The town resembles a sparkling white pearl embraced by high mountains and deep forests, lined with a glittering azure ribbon: the Pite River - one of Sweden's national rivers.

The beautiful surroundings and hospitable inhabitants attract many Swedish and international film makers who record their winter scenes here. The number of tourists increases every year, all eager to explore the white pearl.



Photo: Marcel Képpé



## Thundering forces of nature, taken straight from a winter's tale

It's almost impossible to describe Storforsen in winter using words. In spite of temperatures plunging as low as minus 40 degrees the rapids never freeze.

Their thunderous force and fantasy-like formations created by ice crystals in the wild currents will leave no one unaffected.

Surrounded by old-growth forests and snow-covered trees you can follow the foaming water along kilometre-long paths and visit viewing platforms taking you tantalisingly near the swirling waters.



Photo: Marcel Képpé

## Experience winter at its very best

Use the cross-country skiing tracks and snowmobile trails for your journey, or head out on your own. Try exciting winter activities such as dog sledding and riding, or treat yourself to a moment of relaxation where the final aim can be a beautiful view of the river scenery, or just a relaxing coffee break, enjoying your packed lunch in the winter sunshine.



Photo: Anneli Olofsson





Photo: Peter Lundberg

## Full of action, family friendly and fantastic

Just around the corner, only minutes from the centre, is where you'll find Kanis: the family favourite. It's a ski and outdoor resort with everything you could possibly wish for, ideal for adults and children alike. It features a range of secure children's slopes and lifts as well as pisted runs of varying difficulty levels, a skicross track, a jump park, powder and beautiful cross-country skiing areas - yes, the list goes on! There's something here for all tastes.

This fine old recreation area has been running since the 1940s, growing and attracting families and adventurers from near and far. Not unexpectedly it has a special place in the heart of Älvsbyn's inhabitants. Whether you're after a memorable family day out, adrenaline kicks, or peace and quiet at your own pace - Kanis is something you shouldn't miss!



Photo: Marcel Köppe

## Andörjan - meaning ski tracks

Norrbottens biggest cross-country ski race is held every year here at Kanis. It is a seeding-based race for Vasaloppet.

The name Andörjan comes from the dialectal words for skis, "andren", and tracks, "örjen". In short: Andörjan!

[www.andorjan.se](http://www.andorjan.se)



Photo: Marcel Köppe

## Winter camping

The recreation area here at Kanis has become an obvious holiday destination for many families with children. Camping in winter is cosy and convenient. A change of clothes is always at hand and you're close to the slopes and facilities. Every year more and more campers arrive, so reserve in good time!



Photo: Marcel Köppe

## Activities to keep the whole family warm

Winter will enchant you with plenty of snow, ice and degrees below zero. But on some winter days it might feel like a good idea to take a break from all the outdoor adventures. Here in Älvsbyn there are plenty of indoor activities on offer that will keep you warm and fill the days with fun for the entire family - and best of all: it's close to everything!

Perhaps you just want to relax with an interesting book, take a sauna or watch a good film. Right in the centre there's a large library and the popular meeting place Forum with a lot of fun on offer for adults and children alike. You can go bowling here, go to the cinema or enjoy various music-related events, theatre and revues.



Photo: Anneli Olofsson

## Quiet and thrilling on the ice

In and around Älvsbyn there are many thrilling fishing opportunities to be found. With more than 50 fishing waters to choose between - lakes big and small, rivers, streams and rapids - there's winter fishing for all.

In the warmth of the winter sun and when the ice is thick it's easy to go exploring waters and fishing opportunities by snowmobile, on ski or on foot. Bring friends or family, or enjoy some peaceful time to yourself. To head out ice fishing or angel fishing on a nice spring-winter's day is a form of relaxation that's hard to beat. Or why not try the excitement of so-called "peek-fishing" for Arctic char and grayling when the first ice has set?

Forget all about time and space as you lie on your stomach on a warm reindeer skin, looking down into the drilled hole and its dark abyss, suddenly spotting fish moving around your bait!



Photo: Anneli Olofsson



# Experience

ÄLVSBYN IS ONE OF THE smallest municipalities in the interior of Swedish Lapland, but it features some of its most magnificent nature and important cultural areas. Excavations have uncovered tracks and unique findings showing that hunters and gatherers lived here as early as 7,000 years ago. So even if the surroundings look like untouched nature, even if the feeling is that of primeval forest, people have actually lived here since time immemorial.

Back then there was no wilderness, only new areas to discover. This is your chance to experience that splendid nature and go exploring.

Here is a selection of everything we have to offer, see [visitalvsbyn.se](http://visitalvsbyn.se) for more information.



Photo: Älvsbynews.se

## The bakery museum

A museum that tells a story about the bakeries in the area, the history of Polarbröd and artisan bakeries preserved since the turn of the last century. Open in summer.

Gammelvägen 23  
bagerimuseet@polarbrod.se  
+46 10-450 60 00

## Cinema

Cinema in Älvsbyn.  
See the website for featured films.  
Forum Älvsbyn (Folkets Hus)  
Medborgargatan 2  
[www.forumalvsbyn.se/bio/](http://www.forumalvsbyn.se/bio/)



Photo: Bensinmuseet

## Petrol museum

Sweden's largest exhibition of petrol pumps from the 1920s to the 1960s. The Petrol Museum is located on the Altuna industrial estate in Älvsbyn.

Information and opening hours:  
+46 929-124 37, +46 70-378 21 60  
[www.caltex.nu](http://www.caltex.nu)

## Canis hästkrafter

Horseback riding all year round in the forests and mountains around Älvsbyn. Choose whether you prefer a half-day tour for a few hours or a full day.

Lillkorstråk 201  
+46 70-573 26 66  
annika@canishastkrafter.se  
[www.canishastkrafter.se](http://www.canishastkrafter.se)

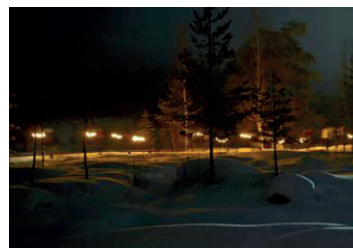


Photo: Hotell Storforsen

## Torch walk

Starting from Storforsen Hotel and up along the rapids on a torch-lit path. A guide will accompany you to tell you facts about the rapids and their history. Once you've reached the reserve there's an open fire going and hot drinks available, warming you up before heading back to the hotel.

Storforsen  
+46 929-721 00  
info@storforsen.se

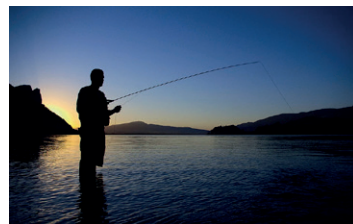


Photo: Nordik Way

## Fishing - where to buy fishing licences

When you go fishing - make sure you know what rules apply and if you need a fishing licence. You can buy licences at Gulf, OKQ8, Gårdings Järnaffär or Storforsen. You can also buy fishing licences at [www.sveaskog.se](http://www.sveaskog.se) and [www.fiskekort.se](http://www.fiskekort.se).



Photo: Laponie mush

## Laponie mush

Join a sled dog adventure this summer. Here you can participate in dog walks, bike tours and kennel visits.

Dojom 3, Vidsel  
+33 (0) 6 75 16 22 99  
info.laponiemush@gmail.com  
[www.laponiemush.com](http://www.laponiemush.com)

## Naturfiskeguiden

Fishing and nature experiences in a wilderness setting, for example fishing for perch and pike, winter fishing, fly fishing course and fishing experience under the light of the midnight sun.

Strandvägen 15  
+46 73-183 95 82  
kaj@naturfiskeguiden.com  
[www.naturfiskeguiden.se](http://www.naturfiskeguiden.se)

## Nature Orienteering

Summer time a Nature Orienteering course is set up with 20 different points of varying difficulty in forest terrain. You can buy a card to participate at Sportringen, Coop Extra and OKQ8.

Sture Norén +46 70-372 20 75



Photo: Nordik Way

## Nordik Way

At Nordik Way you can experience dog sledding in summer as well as winter. In summer time you can also experience the silence of the wild travelling by canoe in lakes and rivers. Hiking with dogs, fishing and learning how to prepare and cook your catch.

Avaträsk 201, Visträsk  
+46 72-285 24 87  
[www.nordikway.com](http://www.nordikway.com)  
nordikway@gmail.com

## Kanis Outdoor Recreation Area

Here you will find cross-country skiing tracks and a ski slope. The ski slope has a T-bar lift and a platter lift for the youngest. There's also a magic carpet by the toboggan slope. Skiing and snowboarding equipment available for rent. Kanisberget, with its ski slope and cross-country skiing tracks, might be an area for winter activities, but the forest is a great place for hiking and berry picking in summer as well. From the top of the mountain there is a nice view of Älvsbyn and the surrounding countryside.

+46 929-723 40  
Information ski slope (weather, opening hours) +46 929-17204  
kanisbacken@alvsbyn.se  
[www.kanisbacken.se](http://www.kanisbacken.se)



Photo: Peter Lundberg

## Church cottages

There are about 40 church cottages preserved in the area around the church. Most of them were built in the 19th century and many are still used for overnight stays. It is a nice walk, strolling around the small, picturesque houses and feeling the pulse of history.

info@alvsbynskyrkstad.se  
[www.alvsbynskyrkstad.se](http://www.alvsbynskyrkstad.se)

## The Laver mine

The Laver mine is located around 50 km west of Älvsbyn and 10 km north of Nattberget along route 94. This used to be a copper mine and the village was Sweden's most modern when it was built in 1937.

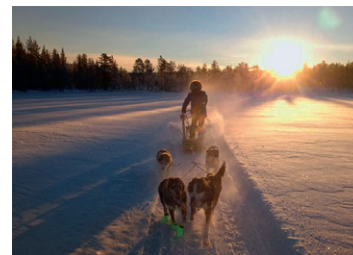


Photo: Laponie mush



## Padel

Challenge friends and family in Storforsen's new, modern padel facility. See the website for more information and how to make a reservation.

Hotell Storforsen, Bredsel  
+46 929-721 00  
info@storforsen.se  
[www.storforsen.se/padel](http://www.storforsen.se/padel)



Photo: På land och vatten

## På land och vatten

At På land och vatten you can experience white water rafting in the Pite River, fishing summer and winter, beaver safari, trapper path, forest skiing, cloudberry safari and forest walk.

Vistbacka 33  
+46 70-605 74 79  
info@plov.se  
[www.plov.se](http://www.plov.se)



Photo: Peter Lundberg

## Storforsen rapids

Europe's largest unregulated rapids. Along the final two kilometres of the rapids the river falls no less than 60 metres, creating a wonderful and dramatic landscape that has fascinated man for thousands of years. Towards the end, the final two kilometres of the rapids, the river falls a full 60 metres, creating an amazing scene that has fascinated people for thousands of years.

Near the rapids there is an easily accessible nature reserve offering a unique environment. Apart from the rapids themselves, the reserve contains the 'Dead Fall', giant's cauldrons, ravines, and lagoons with rare plants. Taking a dip in one of the lagoons is popular on hot summer days.

There are ramps with facilitated access, a forestry museum, a log driving museum, a souvenir shop and food service in summer.

## Museum of Forestry and Log Driving

At Storforsen there is a museum dedicated to forestry and log driving. Here you get an idea of what forestry and log driving was like and how it was done in times gone by. Within Storforsen's nature reserve there are about twenty buildings showing how timber rafting and forest work was conducted in North Bothnia. Among other things there are tools, huts, a charcoal pile, a tar pit and living quarters.

## Top of Älvsbyn

Join our challenge to climb certain peaks in the area. Starting cards are sold at Coop Extra Älvsbyn and Storforsen Hotel. Katarina Sundman +46 70-354 09 15  
Barbro Nilsson +46 70-650 56 53

## Thorsens Tours

Offers, among other things, half- and full-day trips with dog sledding, northern lights, fishing all year round, kayaking and hiking. Trångfors 14, Vidsel  
info@thorsentours.com  
+46 (0) 70 759 74 41  
[www.thorsentours.com](http://www.thorsentours.com)



Photo: Marcel Köppe

## Udda Äventyr

Adventure riding, with emphasis on adventure. The company has its own horses, all Western trained and equipped with quality saddles and other equipment necessary for a successful event. The tours range from day trips to twelve-day outings. Udda Äventyr also offers hunting experiences.

Summer time you can also try a cattle drive experience, shorter and longer transfers of their animals when changing their pasture. There will be both training and the real thing, giving you the opportunity to participate in what is probably the northernmost cattle drive in the world!

Stockfors  
+46 70-585 11 71  
contact@uddaaventyr.com  
[www.uddaaventyr.se](http://www.uddaaventyr.se)

## Älvsby bowlinghall

Bowling and moonlight bowling. Forum Älvsbyn (Folkets Hus)  
Medborgargatan 2  
+46 70-643 14 94  
bowlinghallen@alvsbyn.net  
[www.forumalvsbyn.se](http://www.forumalvsbyn.se)



# Food

THERE ARE PLENTY OF PLACES to stop for food or a snack. There is something here for all tastes: choose between à la carte restaurants or cafés depending on your mood. Or why not prepare a picnic basket and head into the countryside. Enjoy a really good cup of coffee made over an open fire.



Photo: Polar Hotel

## Polar Hotel

Lunch buffet and à-la-carte restaurant.  
Storgatan 29, Älvsbyn  
+46 929-55740  
www.polarhotel.com

## Konditori Centrum

A café with fresh pastries daily, from different kinds of biscuits to festive cakes made with love in our own bakery. In the café section you can enjoy a good cup of coffee and cake.

We also serve home-cooked hearty cuisine, fresh salads and sandwiches.

Storgatan 19, Älvsbyn  
+46 929-100 24  
info@centrumkonditori.se

## Restaurang Venezia

Pizza, grilled dishes, pasta, salads and à la carte.

+46 929-140 99  
Storgatan 43 B, Älvsbyn

## Summer café in Lomtjärnsparcken

Café. Open summer time..  
Lomtjärnsparcken, Älvsbyn

## Trescorona Restaurang

Restaurant In summer there is a conservatory with seating available. Pizzas, grilled dishes and à la carte available. Also open for lunch.

+46 929-129 64  
Storgatan 4, Älvsbyn

## Pizzeria Pronto

A restaurant that offers classic pizzas, salads and grilled dishes.

+46 929-555 17  
Storgatan 14, Älvsbyn

## Pizzeria Aramo

Pizza place with salads, kebabs, falafel, game, sandwiches and grilled dishes.

+46 929-100 03  
Storgatan 10, Älvsbyn

## Älvåkragrillen

Hamburgers, kebab and other dishes available.

+46 929-131 44  
Älvåkra sports grounds  
Idrottstigen 1, Älvsbyn

## Sibylla Mix hamburgerrestaurang

Hamburgers, kebab and other dishes available.

+46 929-550 80  
Storgatan 9, Älvsbyn



Photo: Marcel Köppe

## Hotell Storforsen

Restaurant with a view of the Storforsen rapids. Lunch, dinner buffet (summer buffet during season) and à la carte every day.

+46 929-721 00  
Bredsel 105, Vidsel  
www.storforsen.se

## Pizzeria Tic Tac

In the middle of Vidsel, about 3.5 km from Älvsbyn. A restaurant with pizzas and grilled dishes as well as kebabs and salads. Outdoor seating in summer.

+46 929-340 02  
Västra Vidselsvägen 1, Vidsel

## Royal Corner

Restaurant with inspiration from the caribbean. Offers catering.

+46 73-380 73 52  
Medborgargatan 2, Älvsbyn

## Älvsby Folkhögskola

Lunch restaurant with northern specialties. Open from the beginning of the autumn term until the end of June. During the school year the opening hours follow the school schedule.

+46 929-723 21  
Nygrensvägen 28, Älvsbyn  
www.alvsbyfolkhogskola.nu



Photo: Anneli Olofsson

## Uddens hembageri

Small bakery with locally produced delicacies, pastries, cakes and bread.

Lillkorstråk 20  
+46 929-138 59

## Heart to heart

A restaurant that serves kebab, pasta and Thai food.

+46 929-128 58  
Storgatan 19, Älvsbyn

## Restaurang Matkällan

A restaurant that offers pizza, pasta, salads, grilled dishes and à la carte.

+46 72-403 16 79  
Idrottsvägen 8, Korstråk

## Restaurang Canis

Serves à la carte, lunch and grilled dishes. Restaurant open in winter season. Offers catering all year around.

+46 929-105 40  
Kanis 5, Älvsbyn  
cesallservice@hotmail.com

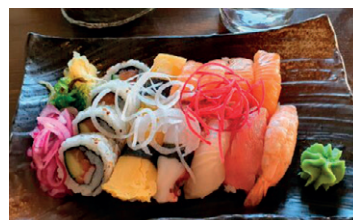


Photo: Peter Lundberg

## Osushi

Sushi restaurant.

+46 929-400 40  
Storgatan 10, Älvsbyn  
info@osushi.se  
www.osushi.se

## Kaffestugan

Café open in summer in Storforsen nature reserve with typical northern dumplings ('palt'), grilled sandwiches, icecream and more.

+46 929-721 00

# Accommodation

COMFORTABLE OR ADVENTUROUS accommodation. Visiting Älvsbyn there are lots of different accommodation options available – comfortable, or more adventurous. There is something for everyone. Perhaps you want to stay somewhere peaceful and quiet, near nature. Where the forest and all its treasures is just around the corner. Wake up after a good night's sleep, enjoy a cup of coffee on the porch and take a morning swim in the lake. Or perhaps you prefer waking up to a tasty breakfast buffet, then having a go at all the activities on offer near your hotel.

There is also accommodation available for rent through individual owners, or you could camp in the wild. There are several suitable spots, both for tents and camping vans. Just remember to tidy up before you leave and respect the rules of the right of public access. Be gentle with all living things, plants and animals alike

Whatever you prefer there are plenty of charming, welcoming options in the area



Photo: Marcel Köppe

## Storforsen Hotel

### Storforsen Campsite

Located at the foot of Northern Europe's largest, unregulated rapids. Stay, eat and meet in a landscape so visually overpowering it might just take your breath away.

Storforsen Hotel is one of Sweden's most beautifully located hotels. On offer here are exciting adventures, rest and relaxation, comfortable hotel nights and efficient events. Choose between single rooms, combi rooms, double rooms, junior suites and suites.

Storforsen Campsite is located next to the Storforsen Hotel with cabins and caravan pitches.

Bredsel 105, 942 95 Vidsel  
+46 929-721 00  
info@storforsen.se



Photo: Peter Lundberg

## Polar Hotel

Located in central Älvsbyn, 82 rooms, 150 beds. Conference rooms for up to 60 people. The hotel has a sauna, a gym, table tennis and à-la-carte restaurant.

Storgatan 29  
+46 929-557 40  
www.polarhotel.com



Photo: SvU-Sanu Fritidshus & Friluftsliv AB

## SvU-Sanu Fritidshus & Friluftsliv AB

In Vidsel, 5 km from Storforsen, SvU-Sanu offers accommodation in villas and cabins. The accommodation offers a cozy, comfortable and beautiful home in all seasons, each with its own character. All villas are non-smoking houses. Dogs welcome.

+46 76-819 80 72, +46 76-819 80 99  
www.nordschveden-ferienhaus.de



Photo: EFS Lillstrand

## EFS Lillstrand

Located around 6 km from Älvsbyn centre along route 94 to Arvidsjaur, a beautiful location by the lake Lillkorstråsket. Ideal for courses and camps, wheelchair adapted.

There are two four-bed apartments with fridge, kitchenette and kitchenware available for rent during some parts of summer. Access to shower and bathrooms. In total there are 40 beds available with youth-hostel standard.

The campsite is open for caravans and tents throughout summer. Call in advance to book.

Lillstrand 12  
+46 70-622 07 17  
www.kyrktorget.se/lillstrand



Photo: Peter Lundberg

## Kanis winter camping

The recreation area here at Kanis has become an obvious holiday destination for many families with children. Camping in winter is cosy and convenient. A change of clothes is always at hand and you're close to the slopes and facilities. Open winter season.

Kanis 5, Älvsbyn  
+46 929-105 40  
info@kanisbacken.se  
kanisbacken.se



Photo: Norrskensudden

## Norrskensudden

Charming holiday houses bringing you back in time, fully equipped for self-catering accommodation. The Guest House with space for six has beautiful lake views from all windows and the Bakery, also with space for six, has a cosy fireplace. There is a view of the lake here, too.

Both houses have electricity, fridge/freezer, cooker and a bathroom with shower. Fishing available just next door.

Skatan 4, 942 91 Vistträsk  
+46 70-172 71 99  
www.norrskensudden.se





Photo: Nyfors Konferens & Camping

### Nyfors Konferens & Camping

Accommodation in cottages with private bathroom and cooking facilities, rooms with private bathroom and caravan and tent sites. There is a restaurant and a service house.

The service house includes a kitchen, laundry room, toilets, showers, jacuzzi, sauna and relaxation area. Pets welcome.

Nyfors 2, Älvsbyn  
+46 70-335 82 96  
info@nyforscamping.se  
www.nyforscamping.se



Photo: Marcel Köppe

### Övrabyens boende

Located about 3 km from the centre of Älvsbyn. Rural surroundings next to the Pite River. The farm has chickens. Near fishing waters, the river and a riding school.

Övrabyens boende consists of a bright, spacious apartment with two bedrooms, a living room, a kitchen and a bathroom with shower. Self-catering. Dogs welcome.

Övrabyvägen 26  
+46 929-230 54  
www.ovrabyensboende.se



Photo: Selholmens Camping

### Selholmens Camping

Camping for caravans, tents and cabins with great views of the Pite River. Log cabins with basic kitchen equipment, one of them allergy adapted. Walking distance to shopping and restaurants.

Service house, kiosk, barbecues, bathing water, jogging tracks.

Campinggatan 1  
+46 70-768 20 82

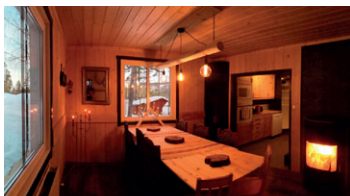


Photo: Nordik Way

### Nordik Way

At Nordik Way you stay in cabins with private shower and WC and a fully-equipped kitchen. The cabin has four beds and consists of a bedroom with two single beds and a sofa bed in the lounge.

Located in Avaträsk 201, about 23 km from Älvsbyn on route 94.

+46 70-456 16 68  
nordikway@gmail.com  
www.nordikway.com

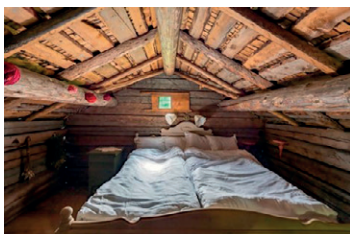


Photo: Daryoush Tahmasebi

### Nygårds Ecoliving

Accommodation in a genuine rural environment in Nygård, about 3 km from Älvsbyn center and next to Pite River. Stay in either an apartment or a minor log-cabin (härbre) from 1738.

Book the accommodation on AirBnB. Search Älvsbyn and choose Nygårds Ecoliving or Nygårds Ecoliving 1700-tals timring (härbre).

Nygårdsvägen 27, Älvsbyn  
+46 70-681 06 60  
bagarstuga@hotmail.com



Photo: Marcel Köppe

### Skataudden

Located in beautiful Lillkorsträsk, around 5.5 km from Älvsbyn. Modern cabins with a wonderful view across the lake. "Stay on a farm" and participate in the farming life. By the lake canoes are available and there is a barbecue spot and a wood-burning sauna raft.

Lillkorsträsk 21  
+46 929-134 06  
www.skataudden.se



Photo: På land och vatten

### På Land och Vatten

Nattbergsstugan used to be a recreational home for state foresters. They came there to relax and go hunting and fishing. The house has been renovated and modernised, but retains an atmosphere of the olden days. There are two rooms and a kitchen.

One of the rooms is a conference room with a cosy fireplace, the other a living room for smaller conferences or dinners. The kitchen is equipped with a wood stove and an electric cooker, running water and a drain. It's located 30 km west of Älvsbyn towards Arvidsjaur.

There are two six-bed cabins available with fully equipped kitchens and bath-rooms with shower. Sauna and hot tub can also be rented.

Nattberg  
+46 70-605 74 79  
www.plov.se



Photo: Marcel Köppe

### Älvsby folkhögskola

The hostel is located in the charming Sjulnäsgråden. Stay in a single or double room with toilet in the room and shower in the corridor. In the shared kitchen you can cook your food.

If you want a family room - contact us!

Nyrgrensvägen 28  
+46 929-723 00  
www.alvsbyfolkhogskola.nu

# Shopping

SHOPPING IN ÄLVSBYN – SIMPLE, FUN AND PERSONAL. Going shopping in Älvsbyn is a delight. The shops are nearby, featuring personal and carefully selected ranges. The staff have expert product knowledge and whether you want advice, help trying things on or just a chat, they're helpful and courteous. Personal service, warmth and expertise has placed Älvsbyn on the shopping map and many travel long distances to come here, finding bargains, good quality and an enjoyable shopping experience.

Shops, cafés and restaurants are near each other. So if your feet get tired and your shopping bags feel heavy a good meal or refreshments will only be a stone's throw away, letting you inspect your bargains as you recharge

### AB Nian

Sales and service of snowmobiles, ATVs and trailers.  
+46 929-201 05, www.abnian.com  
Svedjan 14, Korsträsk

### AB Nian Hästsport

Equestrian store.  
+46 929-201 53, www.abnianhastsport.com  
Svedjan 14, Korsträsk

### Apotek Hjärtat

Pharmacy.  
+46 771-405 405, www.apotekhjartat.se  
Hantverkargatan 1

### Boutique MIM

Clothing store for men and women.  
+46 929-553 33  
Storgatan 10

### Butik Norrbottens Pärla

Kiosk.  
+46 76-773 66 66  
Railway station, Stationsgatan 6

### Coop

Supermarket, gaming operations for Svenska Spel and ATG.  
+46 10-747 80 30, www.coop.se  
Storgatan 15

### Elon Ljud & bild

Home electronics.  
+46 929-124 50, www.elon.se/butiker/  
alvsbyn/elon-ljud-bild-alvsbyn,  
Storgatan 14

### Elon Älvsbyn

Household appliances shop, part of ELON.  
+46 929-135 25  
www.elon.se/butiker/alvsbyn/elon-alvsbyn  
Storgatan 35

### Enmarks husvagnar & fritid

Camping accessories, parts, gas.  
+46 70-243 45 01, www.enmarkshusvagnar.se  
Sågfors 6

### Fabbe & Syrrorna

Yarn, sewing accessories and gifts.  
+46 73-078 35 77  
Storgatan 24

### Gulf

Petrol station with workshop and store.  
+46 929-553 88, www.gulfsvrige.com  
Kyrkogårdsgatan 20

### Gårdings Järnaffär

A shop that sells hardware, paint, wallpaper, flooring, toys, gardening equipment and hunting and fishing gear.  
+46 929-557 50, www.gardings.se  
Storgatan 8

### Handplockat

Handplockat is a shop with a wide range of products such as interior design, clothes, sweets and jewellery.  
+46 929-100 25, www.butikenhandplockat.se  
Storgatan 17

### Handplockat Blommor och Trädgård

Florist's shop.  
+46 929-47 44 47  
Storgatan 17

### Happy

This is the place to go for children's clothes, newborn up to teenagers.  
+46 929-557 70  
Hantverksgatan 1

### Hem & Trevligt

Interior decorating, textiles, baby things and gifts.  
+46 79-046 49 64  
Storgatan 5

### HerrMAN

Clothing store with men's wear.  
+46 929-557 70  
Storgatan 10

### ICA Supermarket

Supermarket and post office.  
+46 929-579 99, www.ica.se  
Skolgatan 17

### Interiör & Design

Flooring, paint and wallpaper.  
+46 929-557 70, www.obergsinterior.se  
Hantverkargatan 1

### Johannas hem & hobby

A wide range of items related to craft and interior design.  
+46 70-680 31 11  
www.johannashemochhobby.se  
Medborgargatan 7

### Kontorsteknik

Office supplies and computers.  
+46 929-120 90, www.kontorsteknik.com  
Medborgargatan 1

### Niemis Optik

Optician.  
+46 920-200 606, www.niemisoptikulea.se  
Storgatan 10

### Nilssons Butiken

A general store with pharmacy. Transport agent and service point.  
+46 929-212 24, www.nilssonsbutiken.se  
Köpmangatan 22, Visträsk

### Noréns hushållsmaskiner

Electrolux household appliances.  
+46 929-107 87  
Järnvägsgränd 6

### NTM Butiken

A shop with workwear, leisurewear, children's clothing and shoes. The store offers optional printing on your workwear and caps.  
+46 929-140 00, www.ntm-norr.se  
Jägargatan 5

### OK/Q8

Petrol station with workshop and store.  
+46 929-102 63, www.okq8.se  
Kyrkogårdsgatan 24

### Röda Korset – Mötesplats Kupan

Second-hand shop.  
+46 929-143 11, www.rodakorset.se  
Storgatan 2-4

### Sportringen Älvsbyn

Sports shop.  
+46 929-550 00, www.sportringen.se  
Storgatan 16

### Storforsen Shop

The place to go for local craft and delicacies.  
+46 929-100 60, www.storforsenshop.se  
Storforsens Nature Reserve

### Tempo

Supermarket and service point in the centre of Vidsele.  
+46 929-301 11, www.tempo.se  
Östra Vidselsvägen 2, Vidsele

### Xaado Shop

Clothing store for women.  
+46 73-557 24 29  
Storgatan 18



# Map of

MIDNIGHT SUN  
IN THE SUMMER

# Swedish Lapland



## Welcome to Sweden's northernmost destination!

In Swedish Lapland you will find unique arctic experiences. Thanks to the warm Gulf Stream, here high up by the Arctic Circle, you can experience seasons with great contrasts between polar nights with sparkling northern lights in a white winter landscape and warm summers filled with swimming and hundred days without night under the midnight sun. In the east – a 300-km coastal stretch facing the world's largest brackish water archipelago, with thousands of islands. Sandy beaches, fishing camps and unique produce. In the west – vast mountains, brooks with water so clean you can drink from them and lots of adventures around the corner. In between the quiet, enigmatic, open-handed forest and river valleys from Skellefte River in the south to Torne River in the north-east, all with their unique distinctive characteristics to offer. Traditions and cultures are strong here, and love of nature is even stronger. This is our everyday life, and we invite you to share it with us. [www.swedishlapland.com](http://www.swedishlapland.com)

Swedish Lapland®



ÄLVSBYN

For more information contact Älvsbyns tourist information, + 46 929-108 60, Storgatan 27, Älvsbyn • Tourist information in Storforsen (open in summer time) [turistinfo@alvsbyn.se](mailto:turistinfo@alvsbyn.se) • [www.visitalvsbyn.se](http://www.visitalvsbyn.se)