



# Know the enemy! The Coffee Berry Borer and similar New Guinean bark beetles



Andrew Johnson and Jiri Hulcr. University of Florida

[ajj@ufl.edu](mailto:ajj@ufl.edu)

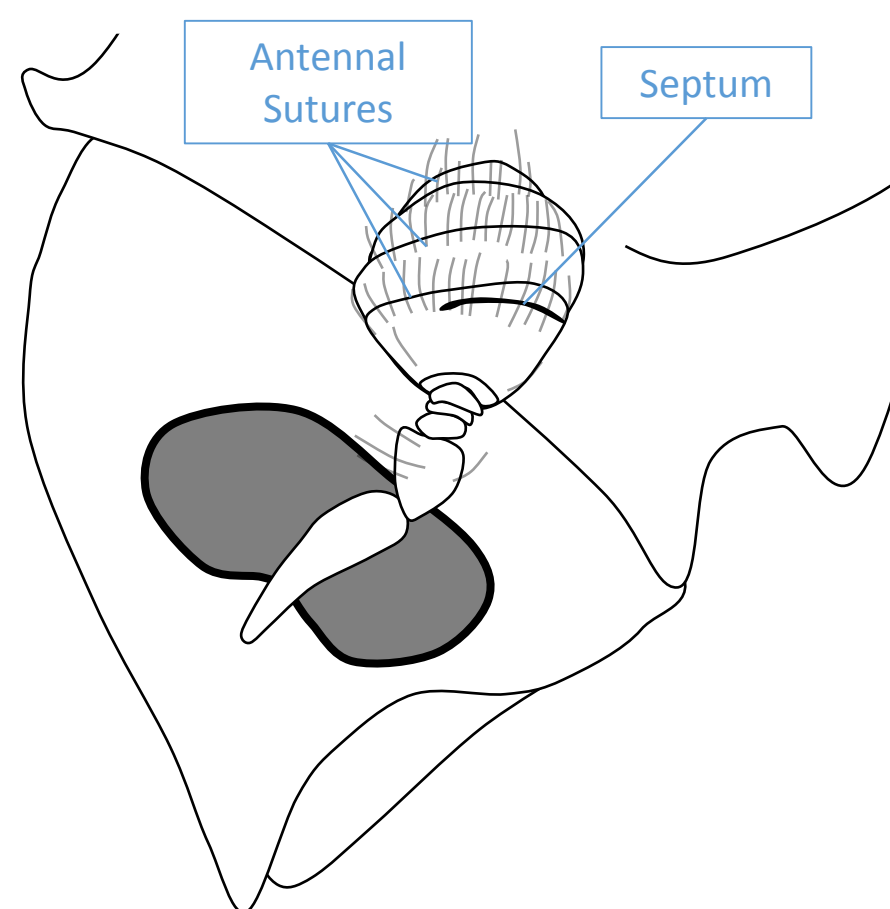
[hulcr@ufl.edu](mailto:hulcr@ufl.edu)

## Introduction

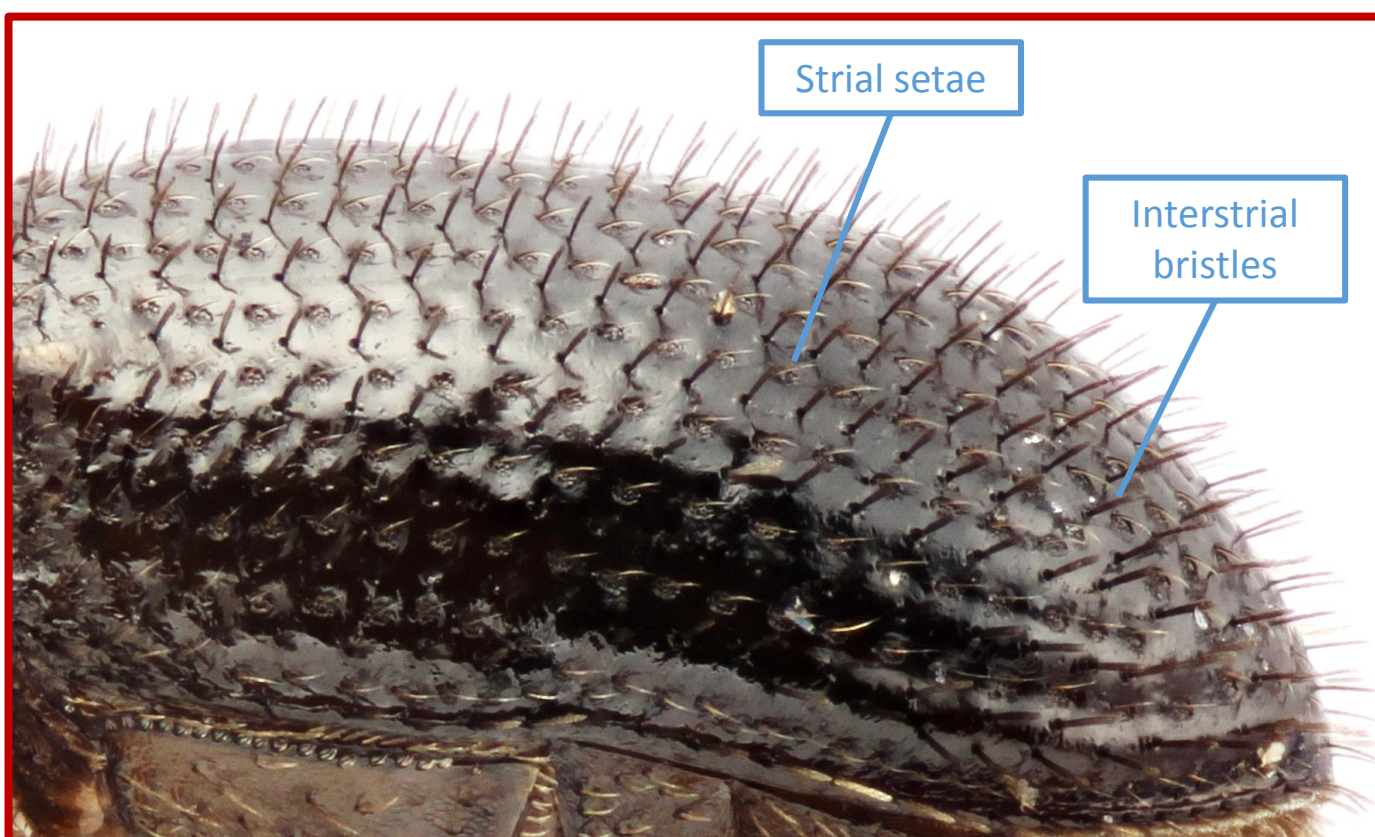
Correct Identification of the coffee berry borer (CBB) in PNG is an essential part of preventing it establishing and harming the coffee industry. There are, however, many similar and mostly harmless bark beetles already present in PNG which will fly into CBB traps. This poster will show the diversity of similar looking beetles and guide the identification of these to their genus.

## Hypothenemus

- Most species are harmless and live in twigs, vines and branches.
- Some other species are rarely found in coffee berries
- Eye emarginated.
- Antennal club with sutures and septum (dark line).
- Most species with flattened setae on the elytra (not CBB)



## The Coffee Berry Borer

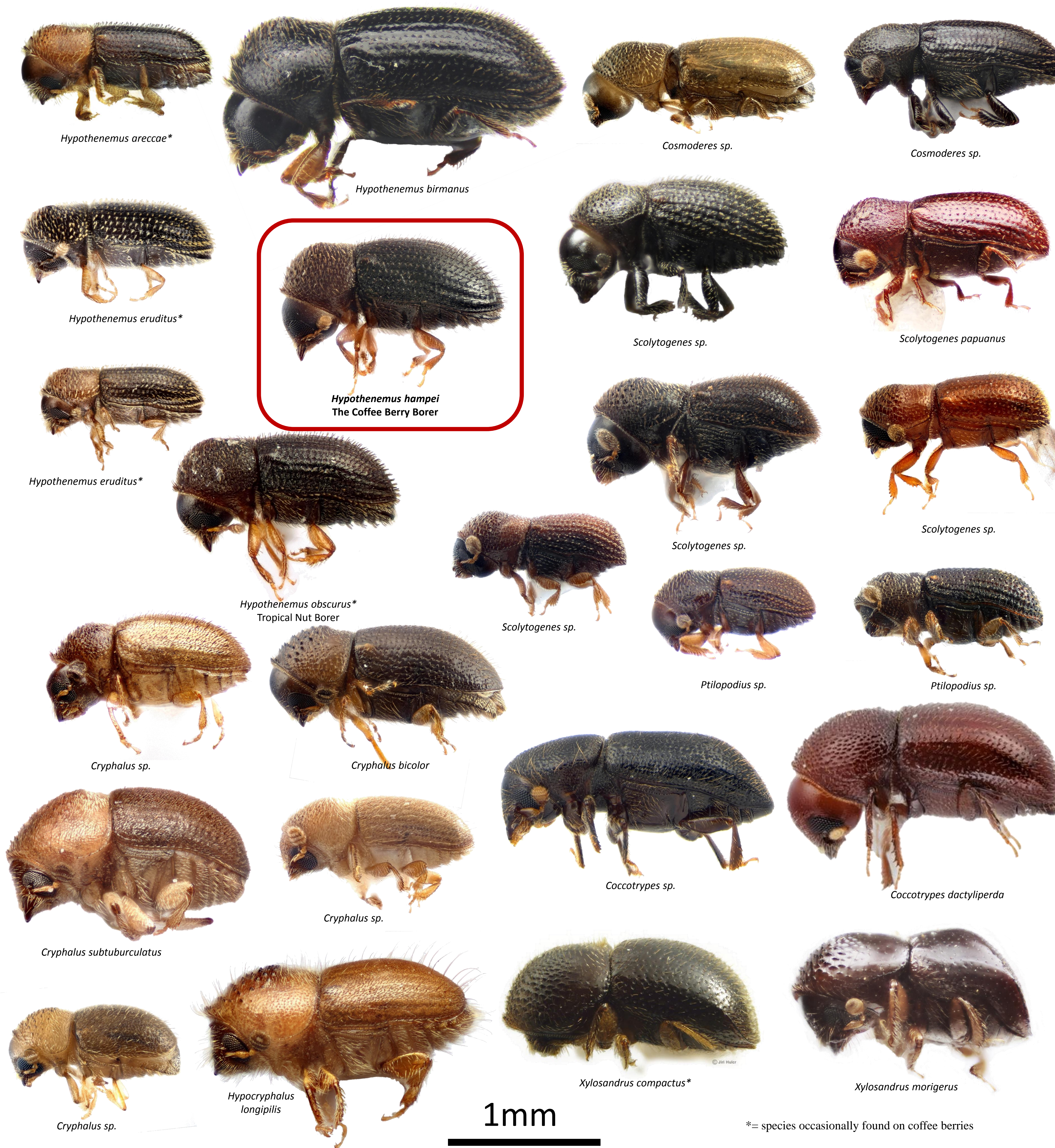
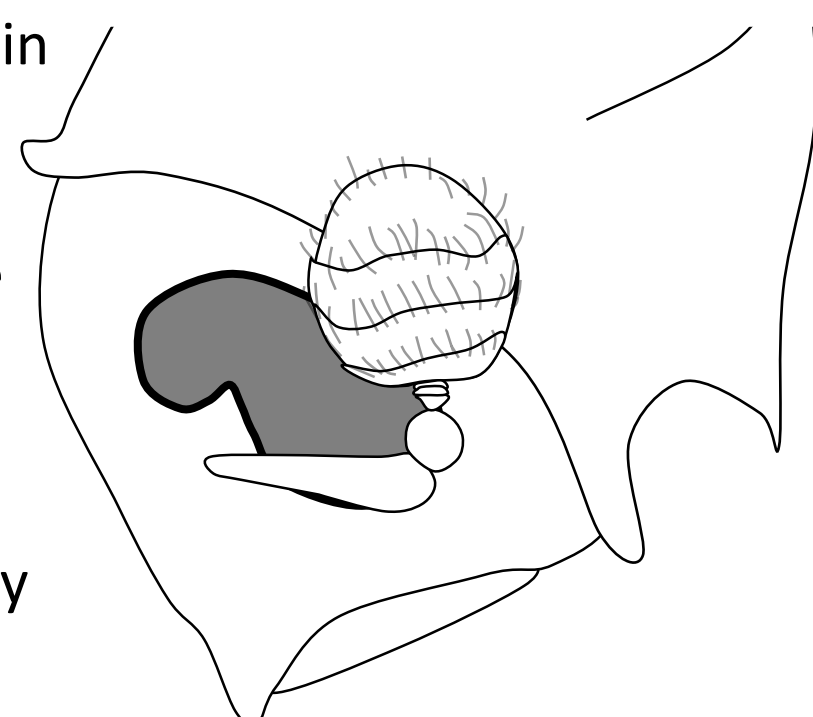


- *Hypothenemus hampei* Ferrari
- 1.4mm to 1.8mm
- All setae on elytra in neat rows.
- Interstitial bristles (larger setae on elytra) straight and not widened at tip.
- Present in West Papua, not yet in PNG



## Cryphalus

- Common and very diverse in PNG
- Eye emarginated
- Antennae with four funicle segments
- Also the genera *Hypocryphalus* and *Margadillius* which are very similar
- *Cryphalus bicolor* looks very similar to CBB



\*= species occasionally found on coffee berries

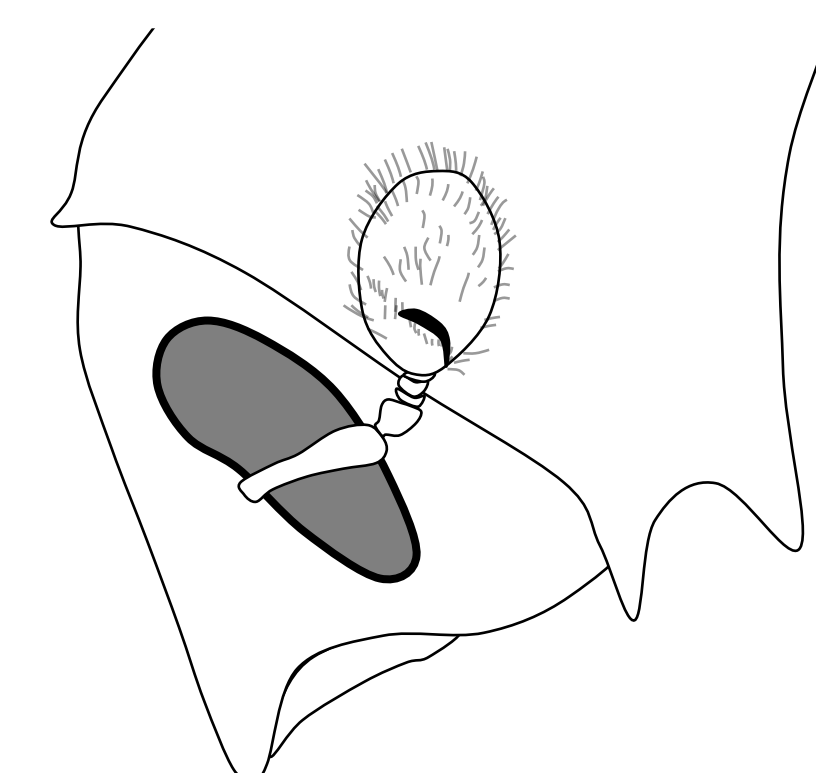
## Cosmoderes

- Common in vines
- Eye emarginated
- Antennae with only two funicle segments
- Large antennal club without sutures



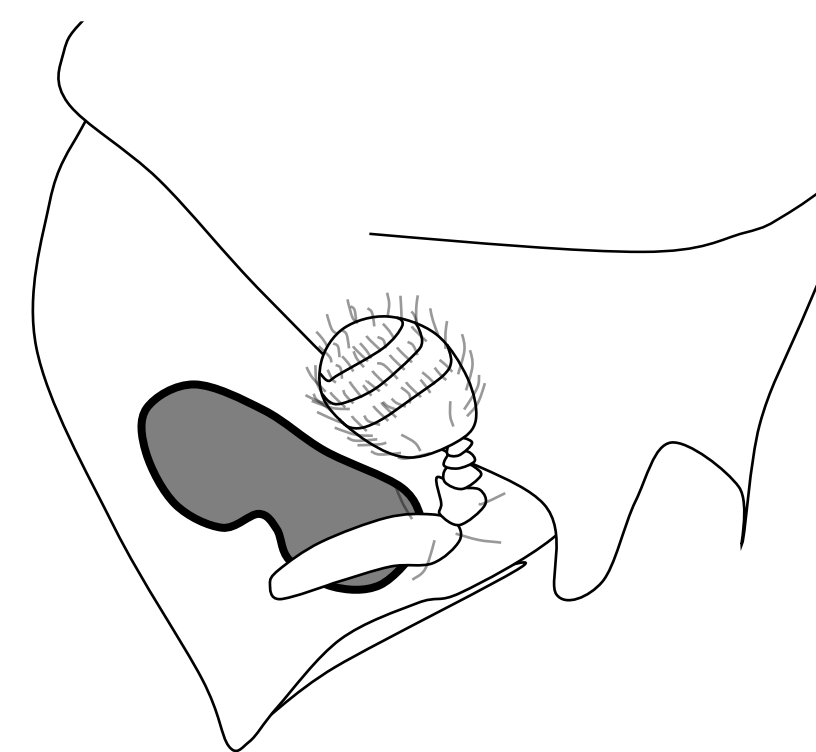
## Scolytogenes

- Very diverse in New Guinea
- Eye entire and long
- Antennal club with septum (dark line) but without sutures.
- The genus *Ptilopodius* is similar but without septum



## Coccotrypes

- Very diverse in New Guinea, living in seeds, under bark, large leaves, etc.
- Eye strongly emarginated
- Antennae with sutures, no septum



## Xylosandrus

- Farms fungus in twigs and banches.
- Occasionally found in coffee berries.
- Large head and pronotum
- Eye Emarginated
- Antennae truncate (Like half a sphere)
- Procoxae separated

