

Australian  
Medical Council Limited

# National Framework for Prevocational (PGY1 & PGY2) Medical Training

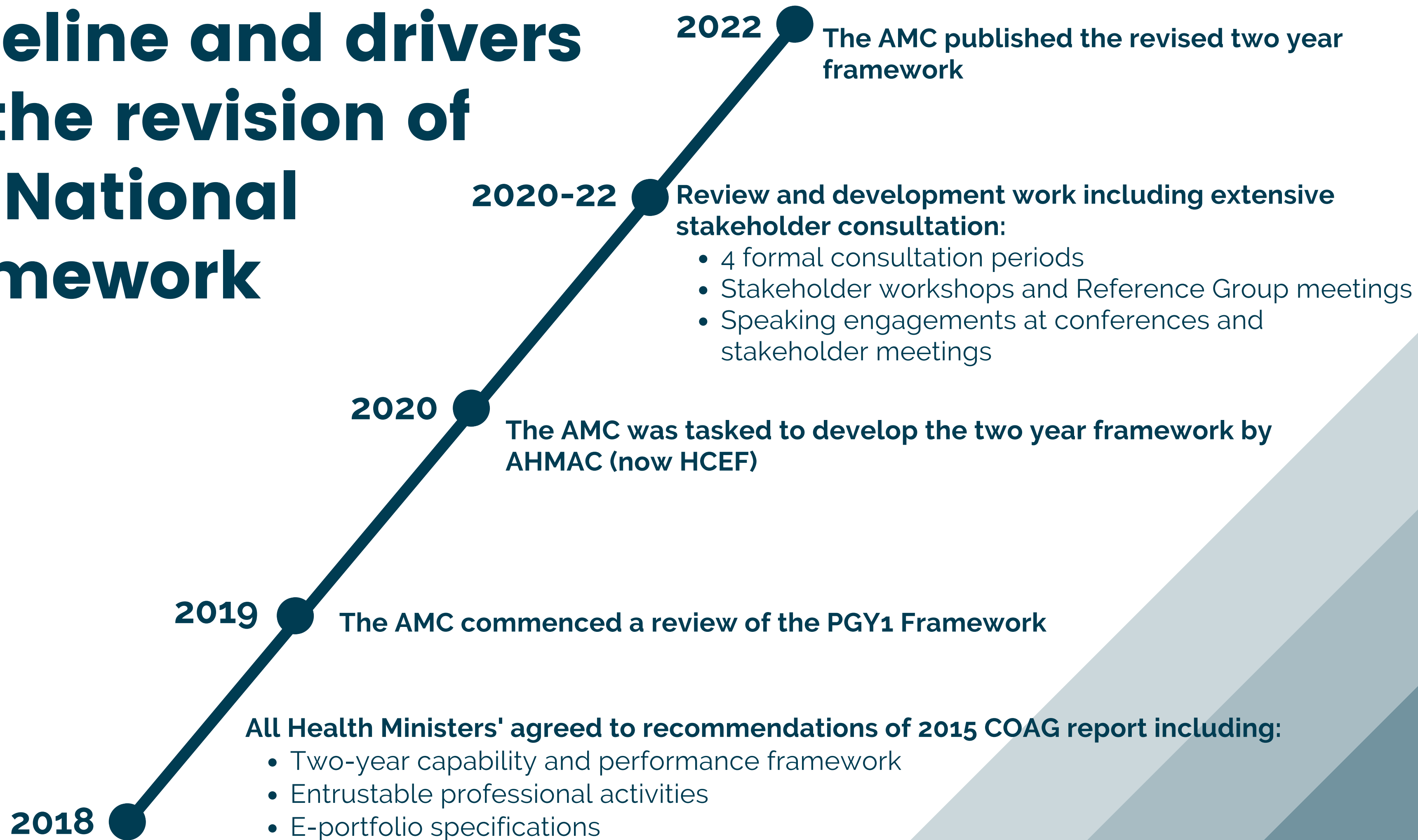
DECEMBER, 2022



# Background

National Framework for Prevocational  
(PGY1 & PGY2) Medical Training

# Timeline and drivers for the revision of the National Framework



# Overview of the National Framework



**Training and assessment requirements for prevocational training programs**



**National standards and requirements for prevocational training programs and terms**



**AMC domains and procedures for assessing and accrediting prevocational training accreditation authorities**

# Revised two year prevocational framework



- Point of **General Registration** remains at **satisfactory completion of PGY1**
- **Entry into specialty training in PGY2 permitted** where specialist colleges allow.
- Expansion to PGY2 intended to provide better support and structure, while maintaining generalist experiences.
- PGY1 and PGY2 (in prevocational framework leading to certificate) will be **exempt from Medical Board of Australia's new CPD requirements**





**ALIGN WITH  
COMMUNITY  
HEALTH NEEDS**



**STRENGTHEN  
ABORIGINAL AND  
TORRES STRAIT  
ISLANDER  
HEALTH**



**IMPROVE  
SUPERVISION  
AND FEEDBACK**



**INCREASE  
FOCUS ON  
CLINICAL  
WORK**



**LONGITUDINAL  
APPROACH**



**PROVIDE  
BROAD  
GENERALIST  
EXPERIENCES**



**INCREASE  
EMPHASIS ON  
WELLBEING**



**IMPROVE  
NATIONAL  
CONSISTENCY**

A woman with glasses is smiling and looking at a document in an office setting. She is wearing a dark sleeveless top. The background is slightly blurred, showing office equipment and a window. The image has a blue overlay.

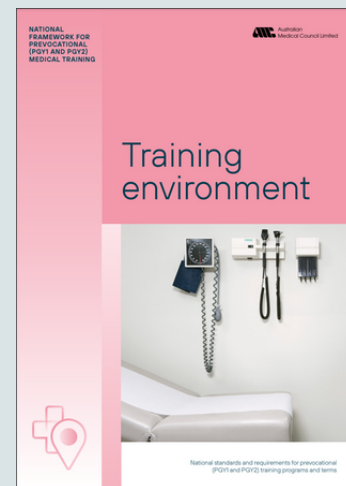
# Framework and changes

National Framework for Prevocational  
(PGY1 & PGY2) Medical Training

# Overview of the National Framework



Sets national training and assessment requirements for PGY1 and PGY2 training programs



Sets national standards and requirements for PGY1 and PGY2 training programs and terms



Defines standards and procedures for AMC accreditation of PGY1 and PGY2 training accreditation authorities (postgraduate medical councils)

Framework supported by:



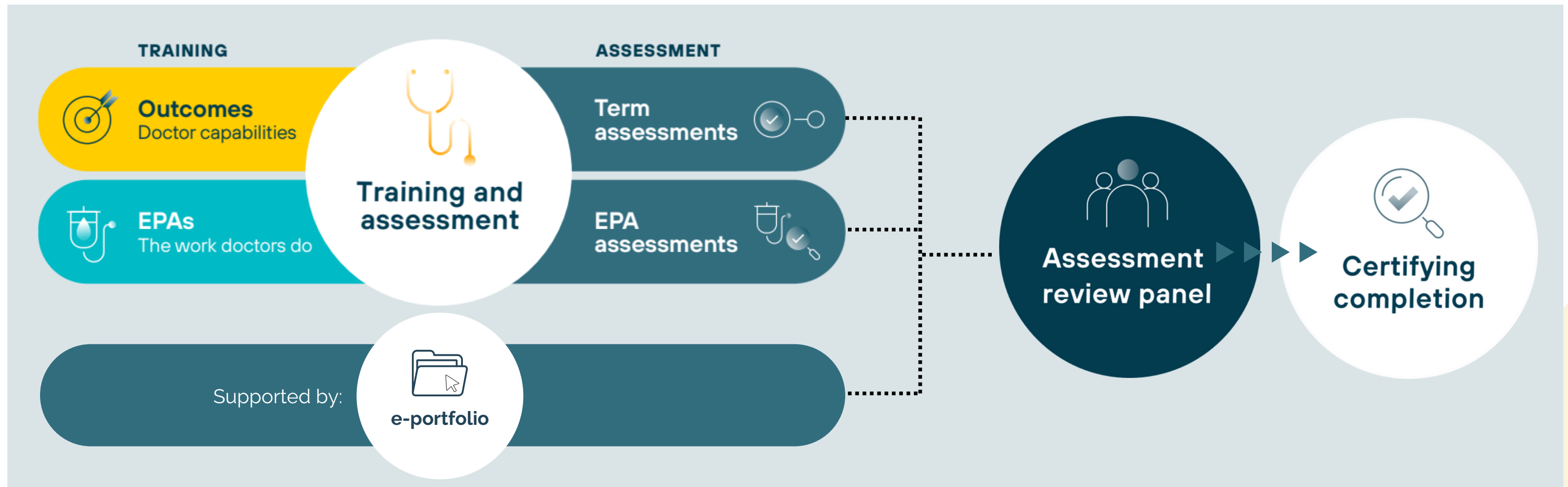


The background of the slide is a warm, golden-yellow color with a soft, out-of-focus image of a medical professional's hands. One hand is holding a stethoscope, and the other is resting on a clipboard with a pen. The overall aesthetic is professional and clinical.

# **Training and assessment**

National Framework for Prevocational  
(PGY1 & PGY2) Medical Training

# Overview of Training and assessment

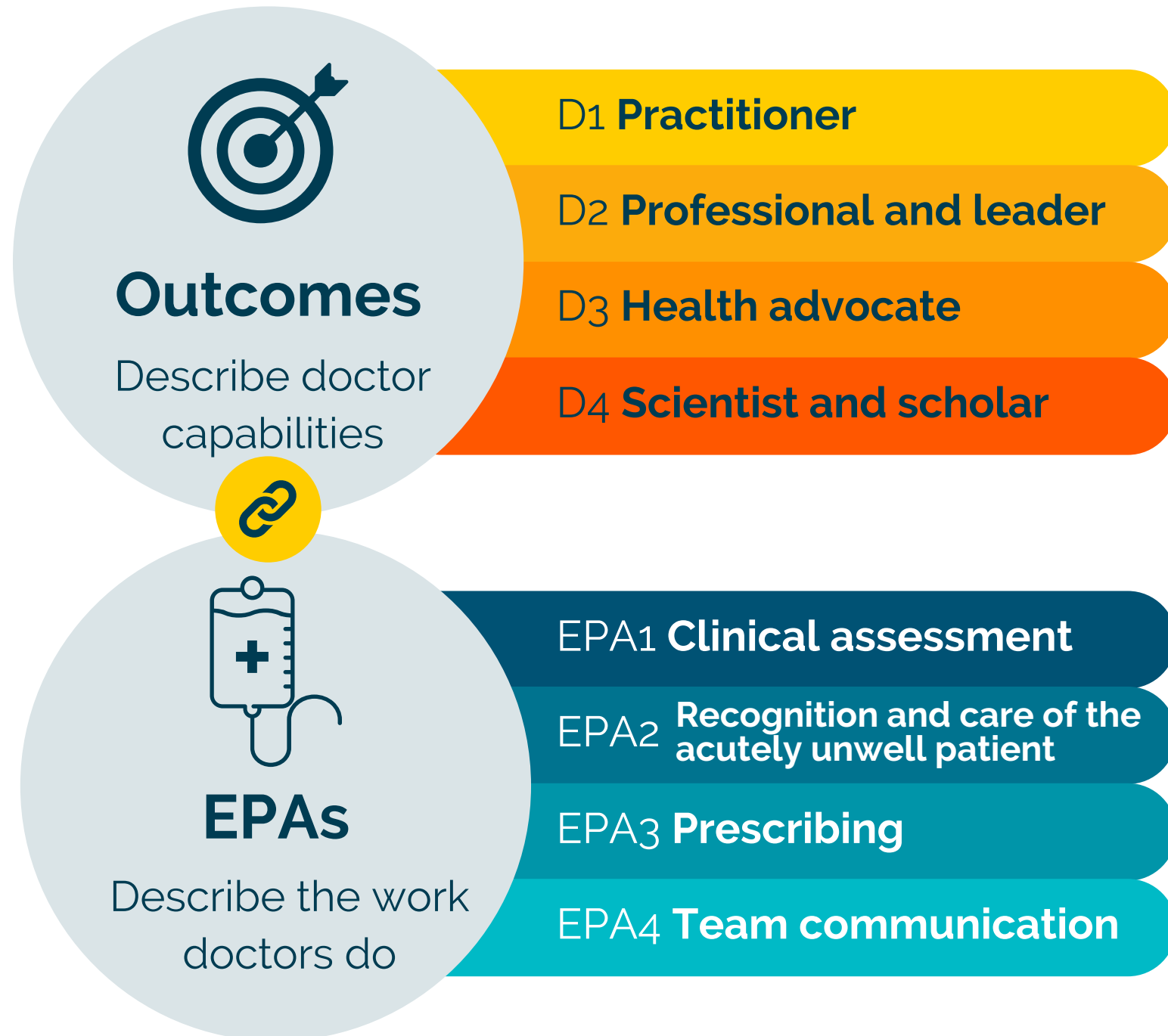


## Major changes

- Inclusion of EPAs
- Global judgment at the end of the year by a panel rather than an individual

# Training - Outcomes and EPAs

Training requirements for prevocational (PGY1 and PGY2) programs



## Major changes - outcomes

- Revised to better reflect community needs
- New Aboriginal and Torres Strait Islander outcomes
- Domains re-ordered to reflect work of PGY1 and PGY2 doctors

## Major changes - EPAs

- Four new EPAs that describe key work tasks
- Mapped to outcome statements
- Anchor prevocational years in clinical work

# Entrustable Professional Activities (EPAs)



EPA1 **Clinical assessment**

EPA2 **Recognition and care of the acutely unwell patient**

EPA3 **Prescribing**

EPA4 **Team communication - documentation, handover and referrals**

## What is an EPA?

- An EPA is a description of work that you undertake regularly in your day-to-day clinical practice.
- Your performance of an EPA can be assessed.
- In the assessment your supervisor makes a judgement about how safely you can perform this piece of work – your level of entrustability.

# Assessment of EPAs

**Activity-based discussion** as part of routine clinical work.  
An EPA assessment is not a "pass/fail" assessment.

## Number of EPA assessments

### Global requirements

10 minimum across the year  
2 or 3 within each term

### Specific requirements

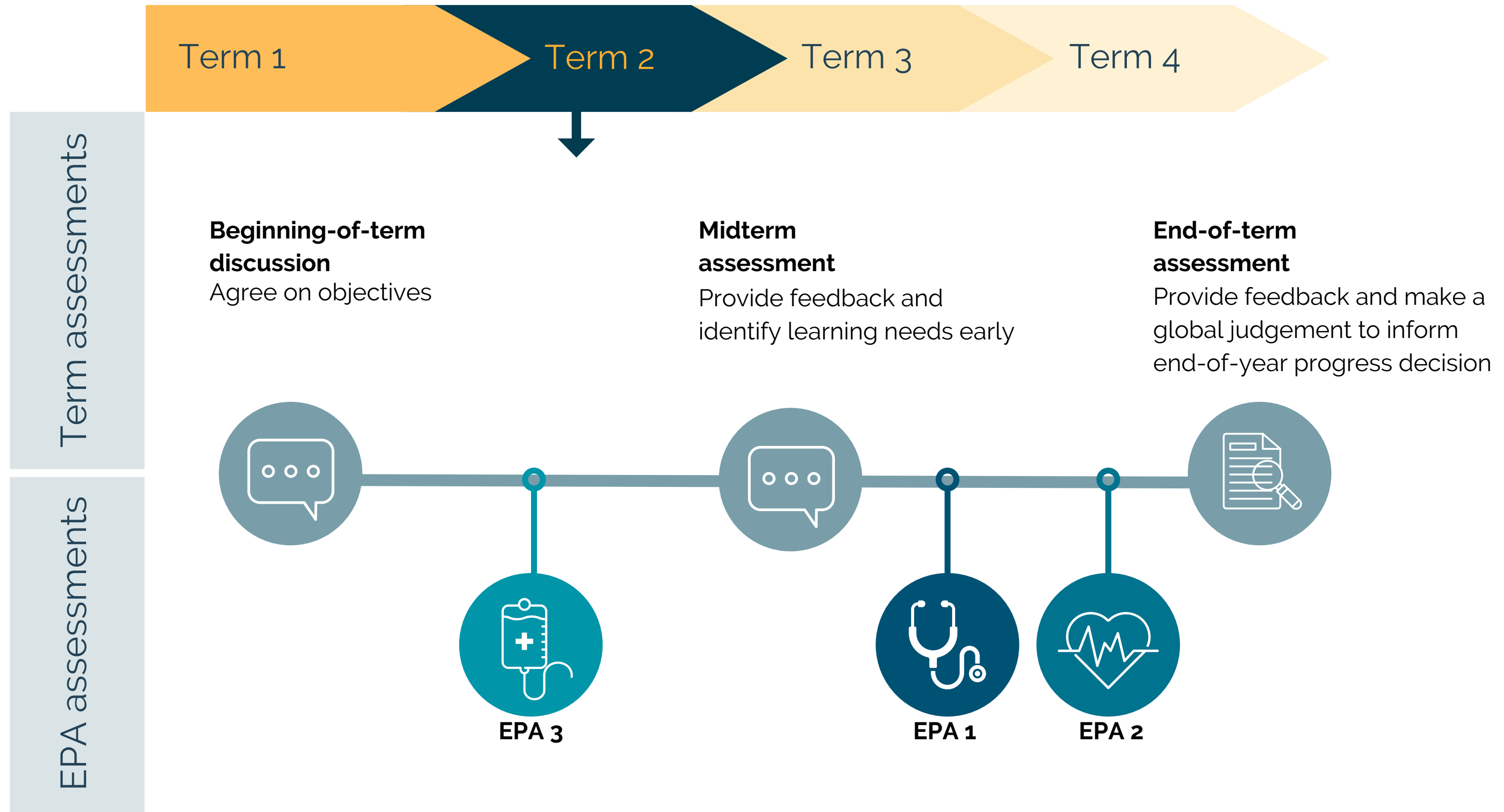
**EPA 1:** 4 minimum across the year  
**EPA 2, 3 & 4:** 2 minimum across the year

## Assessors

- At least 1 EPA a term must be assessed by a specialist or equivalent.
- Other EPAs in each term can be assessed by other health professionals once training in EPA assessments has been completed: e.g. specialists, registrars, nurse/ nurse practitioners, pharmacists, others as appropriate

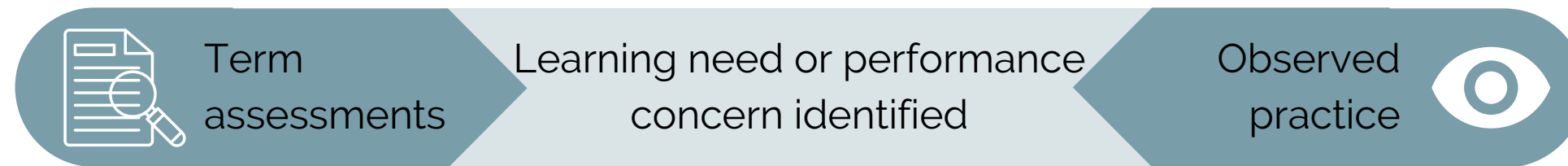


# EXAMPLE - Assessment within a term



# Improving performance

Revision to existing remediation process:



Phase 1 **Informal discussion**

Phase 2 **Formal discussion and action plan**

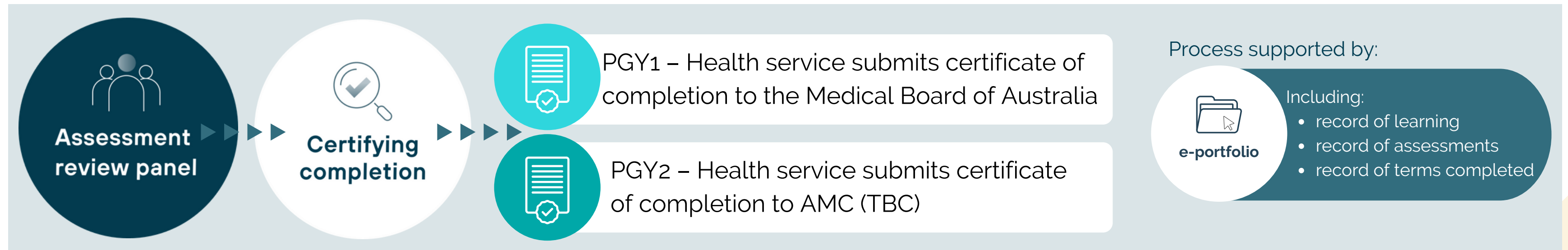
Phase 3 **Managed supervised practice**

## Major changes

- Emphasis on improving performance and support
- Change in structure: 3-Phase approach

# Certifying completion

Global judgement by an assessment panel at the end of each year. Satisfactory performance is judged on attainment of the required standard by end of year rather than a requirement to pass a specified number of assessments or terms.



Evidence provided to the assessment panel to support decision making:

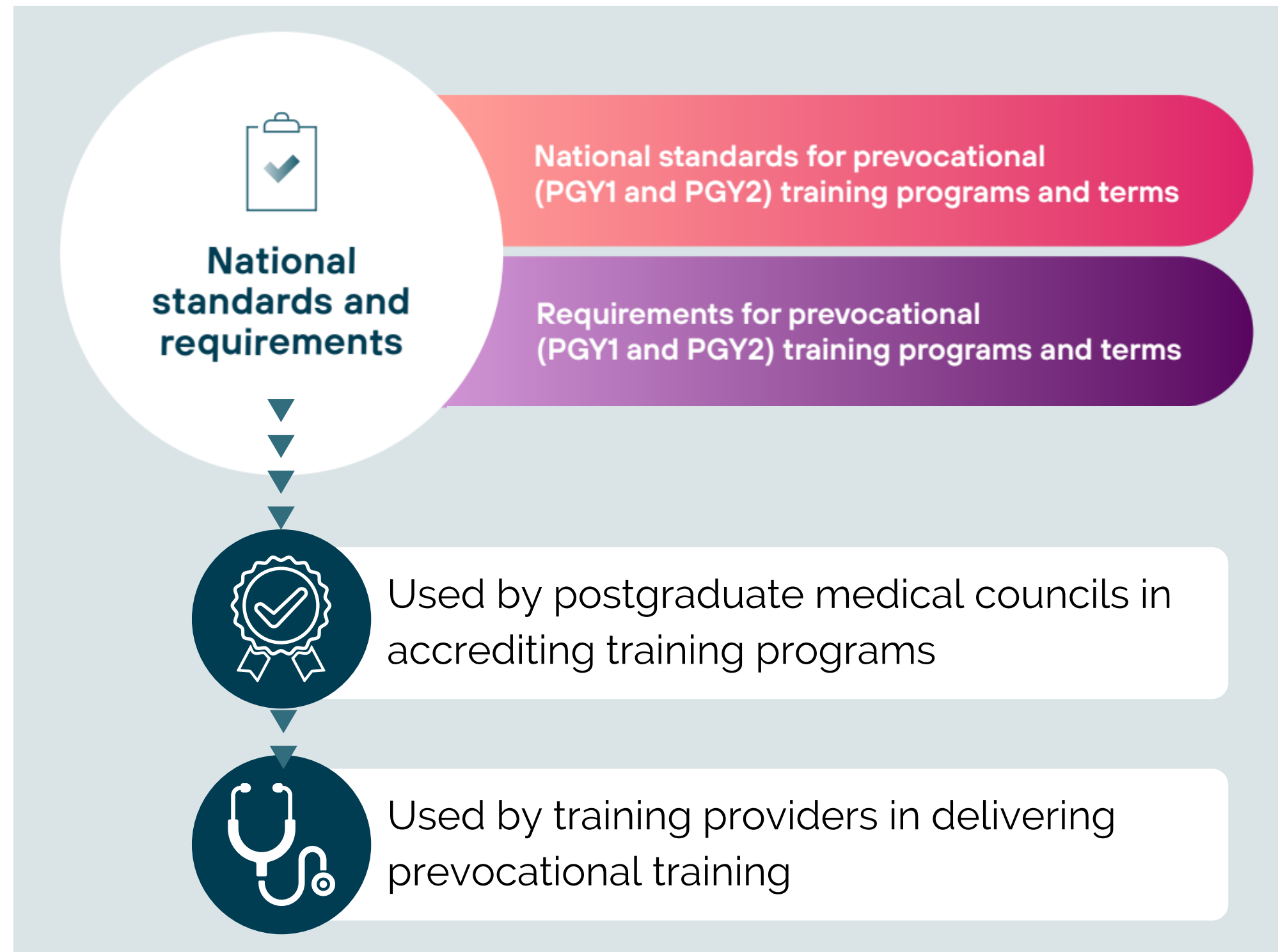
- Program length (47 weeks)
- Term requirements (revised parameters)
- Completion of the outcomes
- Term assessments (mid and end)
- Assessment of EPAs



# Training environment

National Framework for Prevocational  
(PGY1 & PGY2) Medical Training

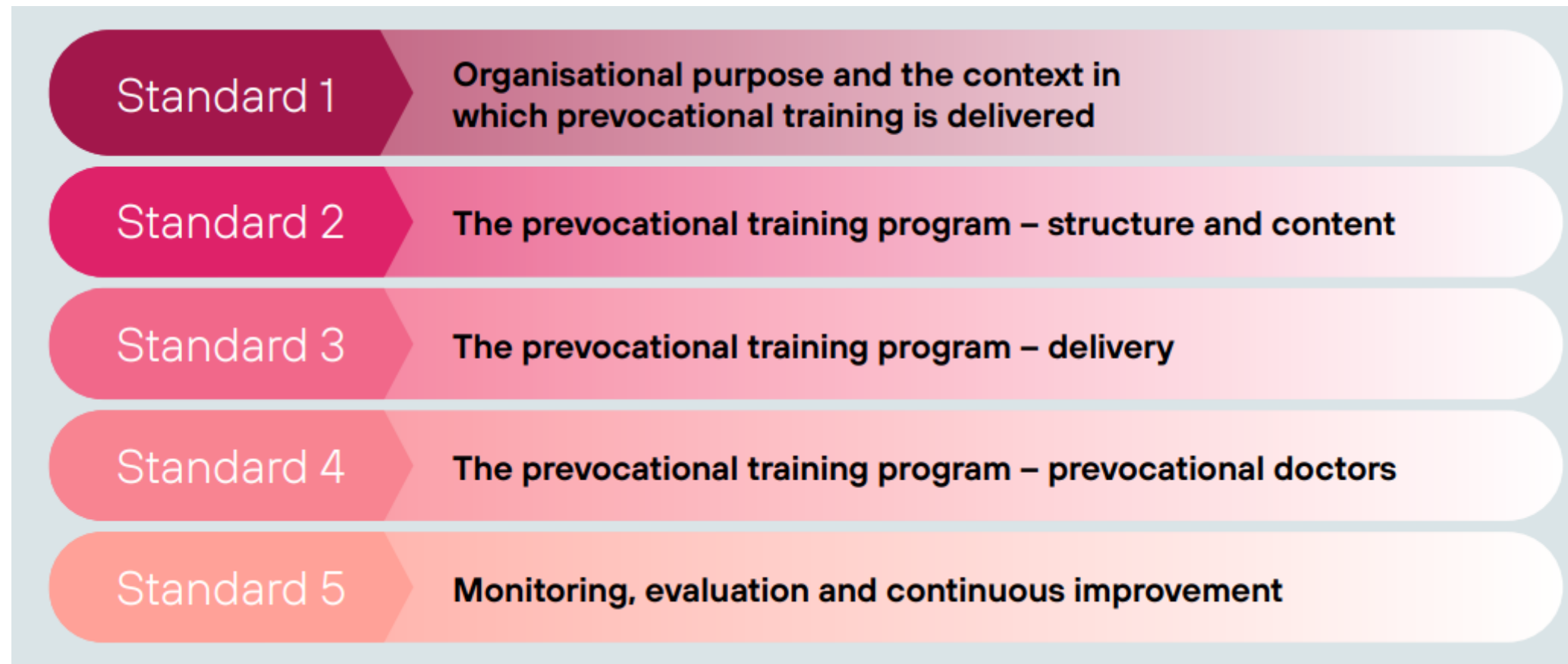
# Overview of Training environment





# National standards

These standards are used by postgraduate medical councils in accrediting training providers.










## Major changes

- Mandated use of national standards
- Expanded to PGY2
- Mandated term supervisor training (within 3 years)
- Strengthened Aboriginal and Torres Strait Islander standards
- Strengthened wellbeing standards

In future - Mandatory community terms

# Requirements for programs and terms

## Program level requirements

	PGY1	PGY2
Length	Minimum 47 weeks	Minimum 47 weeks
Structure	Minimum of 4 terms (of at least 10 weeks)	Minimum of 3 terms (of at least 10 weeks)
Specialties	Maximum 50% any specialty and 25% subspecialty	Maximum 25% subspecialty in a year
Embedded in clinical teams	At least 50% of the year	At least 50% of the year
Service terms - relief and nights	Maximum 20% of the year	Maximum 25% of the year
Program content - Clinical experiences  <b>The primary focus of the clinical experience that the prevocational doctor is engaged with during the term</b>	 A. Undifferentiated illness  B. Chronic illness  C. Acute and critical illness  D. Peri-operative/procedural	 A. Undifferentiated illness  B. Chronic illness  C. Acute and critical illness

## Term level requirements

### Term descriptions must define:

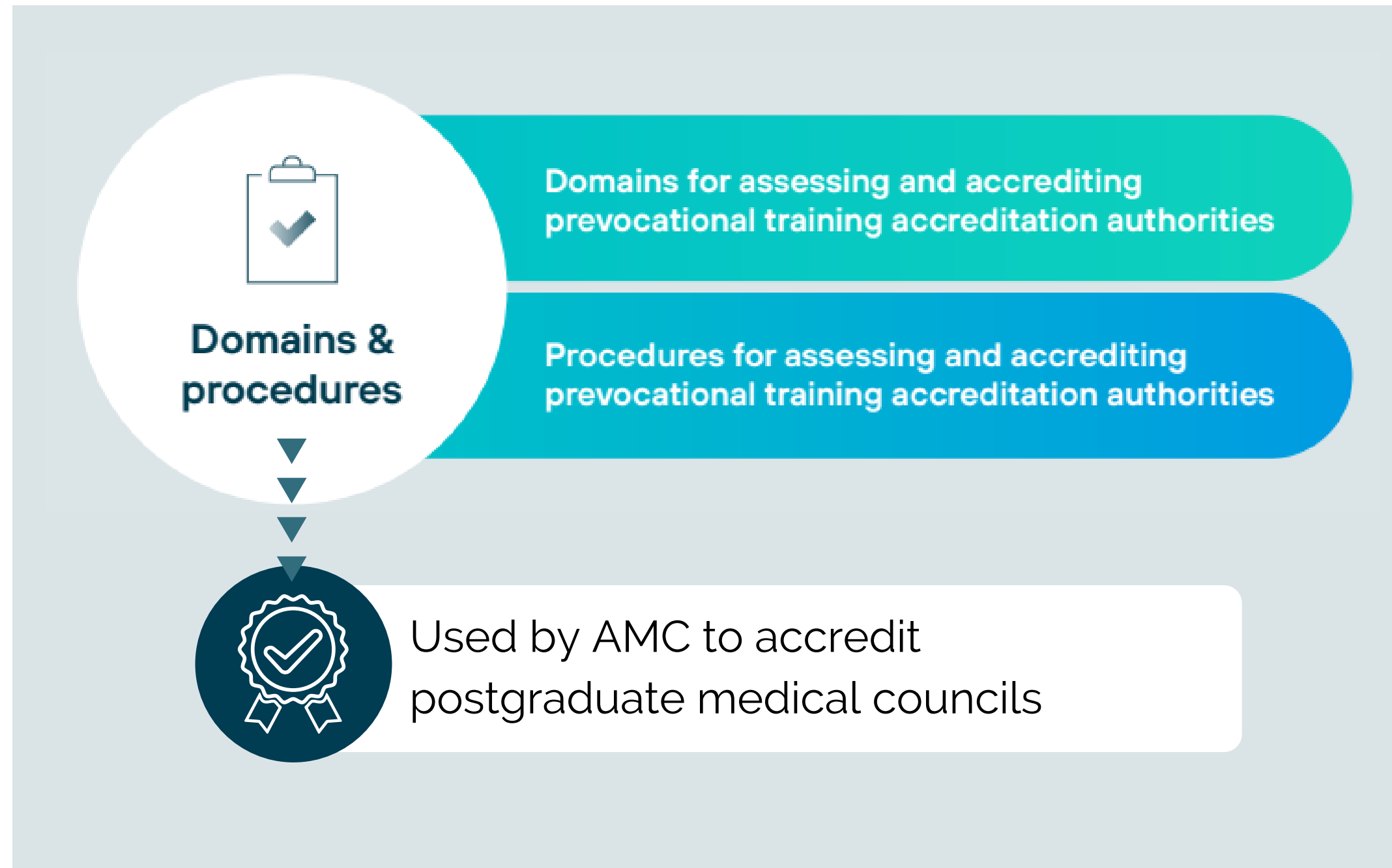
- ✓ the term
- ✓ the team
- ✓ the role of the prevocational doctor
- ✓ the clinical experiences and learning outcomes



# **Quality Assurance**

National Framework for Prevocational  
(PGY1 & PGY2) Medical Training

# Overview of Quality assurance



# Domains and procedures for assessing and accrediting prevocational training accreditation authorities



Overview of domains for assessing PMCs

**Domain 1**

**Purpose and Governance**

**Domain 2**

**Independence**

**Domain 3**

**Operational management**

**Domain 4**

**Processes for accreditation of prevocational training programs**

**Domain 5**

**Stakeholder collaboration**



Procedures for accrediting PMCs

## Changes

- No major changes
- New Domain "Purpose" combined with existing Domain 1 "Governance"
- Included requirement to use and respond to external sources of data (e.g. the Medical Training Survey)





# e-portfolio

National Framework for Prevocational  
(PGY1 & PGY2) Medical Training

# e-portfolio

The AMC has been tasked by Health ministers to develop specifications for an e-portfolio to support the revised two year framework

## Framework supported by:



**e-portfolio**

Including:

- tracking against outcomes
- record of learning
- platform for assessments
- record of assessments
- reflections
- ability to upload learning activities
- program delivery/ administration
- record of terms completed
- data collection

## Next steps

- High-level specifications currently being translated into detailed system requirements.
- Awaiting response on proposal to HCEF on "national" e-portfolio



# Preparation (2022-2023) and Implementation (2024+)

National Framework for Prevocational  
(PGY1 & PGY2) Medical Training

# Implementation timelines



## PGY1

PGY1 components implemented in **2024**



## PGY2

PGY2 components can be implemented **flexibly** across **2024** and **2025** by postgraduate medical councils and health services.

# Resources to support implementation



**FREQUENTLY  
ASKED  
QUESTIONS**



**SIMPLIFIED  
SLIDE DECK  
OUTLINING  
FRAMEWORK  
CHANGES**



**WRITTEN  
GUIDE FOR  
PGY1 & PGY2  
DOCTORS**



**WRITTEN  
GUIDE FOR  
SUPERVISORS**



**WRITTEN  
GUIDE FOR  
ASSESSMENT  
PANELS**



**TEMPLATES:  
-BEGINNING OF  
TERM DISCUSSION  
-TERM  
DESCRIPTION**



**E-PORTFOLIO  
GUIDE**

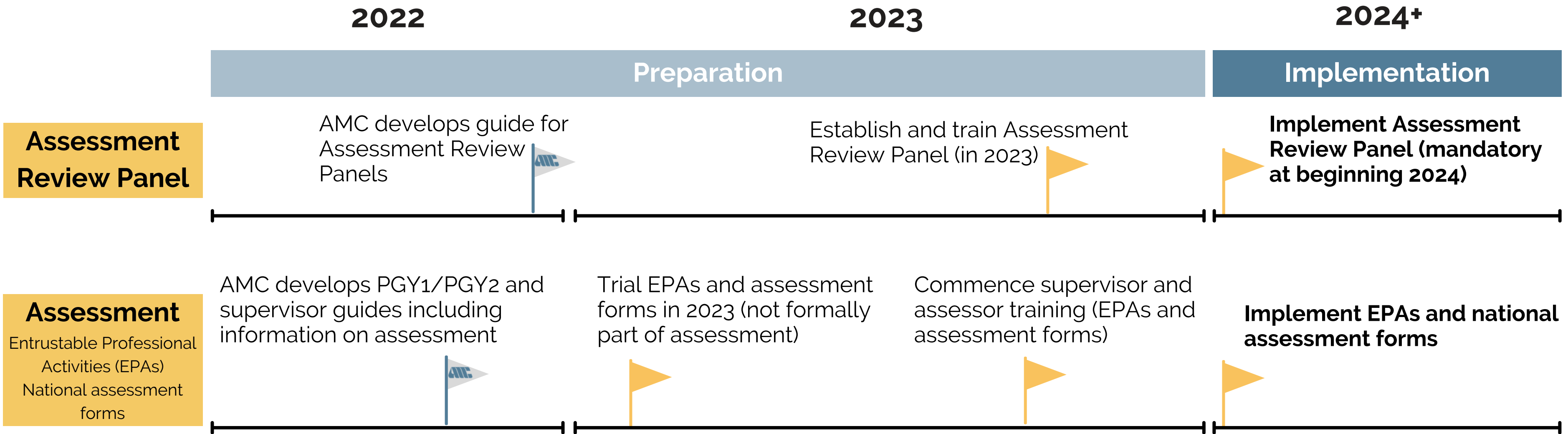


**VIDEO  
RESOURCES**

# National Framework Implementation Roadmap



Components relating to Training and assessment requirements for prevocational training programs



**PGY1** components implemented in 2024

**PGY2** components can be implemented flexibly across 2024 and 2025 by postgraduate medical councils and health services.



# National Framework Implementation Roadmap



Components relating to National standards and requirements for prevocational training programs and terms

2022

2023

2024+

Preparation

Implementation

**Term requirements**

Review and gap analysis of programs and terms to revised requirements

Classify existing terms into 1 or 2 areas of clinical care

Review combination of terms so that the overall programs meet new framework requirements

Finalise the description template for all PGY1 and PGY2 terms

**Implement new term requirements**

**Supervisor training**

AMC release supervisor guide

PMCs and health services identify supervisor training approach

Commence supervisor training in 2023

**Complete training of all supervisors**  
(within three years of implementation)

**National standards**

Gap analysis and review of standards

Commence training teams

Revise all current documents

**Implement revised National standards**

**PGY1** components implemented in 2024

**PGY2** components can be implemented flexibly across 2024 and 2025 by postgraduate medical councils and health services.

# National Framework Implementation Roadmap



Components relating to AMC domains and procedures for assessing and accrediting prevocational training accreditation authorities

2022

2023

2024+

Preparation

Implementation

Quality Assurance

PMC's update on progress and preparation

Updated domains used for accreditation assessments and monitoring

e-portfolio

subject to HCEF approval

Decision on national approach by HCEF

AMC develop detailed specifications

Tender process (end 2022 or 2023)

Development of e-portfolio and user testing

e-portfolio training

e-portfolio implemented

**PGY1** components implemented in 2024

**PGY2** components can be implemented flexibly across 2024 and 2025 by postgraduate medical councils and health services.