



Lepidote Rhododendrons

Belgian Dendrology Study Day

19 April 2015

Philippe de Spoelberch

Style sharply deflexed	Style declinate or straight			
	<div style="border: 1px solid black; padding: 5px; display: inline-block;"> I. EDGEWORTHIA II. MADDENIA III. MOUPINENSIA IV. MONANTHA </div>			Seeds winged and finned; epidermis often multiple-layered; sclereids frequent; epiphytic habit frequent
<div style="border: 1px solid black; padding: 5px;"> XIX. BOOTHIA XX. CAMELLIIFLORA </div>				
<div style="border: 1px solid black; padding: 5px;"> XXI. GLAUCA XXII. CAMPYLOGYNA XXIII. GENESTIERIANA XXIV. LEPIDOTA XXV. BAILEYA XXVI. TRICHOCLADA XXVII. AFGHANICA </div>	XII. SALUENENSIA XIII. FRAGARIFLORA XIV. UNIFLORA Upper leaves bract-like	IX. LAPPONICA X. RHODODENDRON XI. RHODORAstra Upper leaves not bract-like	V. TRIFLORA VI. SCABRIFOLIA VII. HELIOLEPIDA VIII. CAROLINIANA XV. CINNABARINA XVI. TEPHROPEPLA XVII. VIRGATA	Seeds not winged; epidermis 1--2-layered; sclereids infrequent; epiphytic habit infrequent.
	Plants of small size		Plants larger	
	Tendency to deciduous leaves and axillary inflorescences			
	<div style="border: 1px solid black; padding: 5px; display: inline-block;"> XVIII. MICRANTHA </div>			
	Seeds winged			

FIG. 5. Grouping of the subsections of section *Rhododendron*, with some of their important characters. For further information see p. 187.

Classification and distribution of selected rhododendrons

(selection shown on BDB study day of 19 April 2015 at Arboretum Wespelaar)

SUB-SECTIONS	America	Europe Siberia	Himalaya, SE Tibet	SW China	C & NE Asia	Japan
Section Pogonanthum			anthopogon kongboense laudandum	trichostomum primuliflorum		
Edgeworthia				pendulum		
Maddenia			maddenii ciliatum			
Moupinensia			dendrocharis (moupinense)			
Triflora			triflorum, oreotrephes	ambiguum lutescens augustinii yunnanense rigidum tatsiense davidsonianum concinnum trichantum oreotrephes		keiskei
Cinnabarina			cinnabarinum keysii			
Heliolepida			rubiginosum	rubiginosum		
Scabrifolia				racemosum scabrifolium hemitrichotum spinuliferum		
Caroliniana	minus, var. chapmanii					

Caroliniana	minus, var. chapmanii					
SUB-SECTIONS	America	Europe Siberia	Himalaya, SE Tibet	SW China	C & NE Asia	Japan
Lapponica	lapponicum	lapponicum		complexum telmateium fastigiatum hippophaeoides polycladum nivale rupicola russatum cuneatum		
Rhododendron		ferrugineum				
Rhodorastra					dauricum mucronulatum	dauricum mucronulatum
Saluenensia				saluense calostrotum		
Ledum	groenlandicum columbianum	groenlandicum				
Micrantha					micranthum	
Boothia			leucaspis			
Lepidota			lepidotum	lepidotum		
Glauca			glaucophyllum	charitopes		
Campylogyna				campylogynum		
Trichoclada				lepidostylum		



Subsection Carolina
Rhododendron minus

Rhododendron minus var. *minus* (Lingua Falls, Shenandoa N.Park.)- 82353



Rhododendron minus var. minus (Lingua Falls, Shenandoa N.Park.)- 82353



Rhododendron minus var. chapmanii - 13054-div-161 - 2013.0519

Subsection Ledum

Rhododendron columbianum (syn. *Ledum glandulosum*) –
Pigmy Forest, Mendocino, California - 2010.0703



Rhododendron columbianum (syn. Ledum glandulosum) –
Pigmy Forest, Mendocino , California - 2010.0703



Rhododendron columbianum (syn. Ledum glandulosum) –
Pigmy Forest, Mendocino , California - 2010.0703




Rhododendron groenlandicum - 86300-esv- E

A botanical specimen of Rhododendron groenlandicum is shown against a black background. The specimen consists of several stems. One stem on the left has several large, elongated, green leaves, some of which are partially dried and yellowish. Another stem in the center has a terminal inflorescence with numerous small, brownish, developing flower buds and long, thin, green, hair-like structures. A third stem on the right has a few green leaves and a small, developing flower bud.

Rhododendron groenlandicum - 86300-esv- E - 2015.0221



Rhododendron groenlandicum - 86300-esv- E - 2015.0221

A large, dense bush of purple Rhododendron lapponicum flowers is the central focus of the image. The flowers are numerous and small, creating a vibrant purple mass. The bush is situated in a garden with other plants, including a tree with pink flowers in the background and a green shrub on the right. The ground is covered with brown, fallen leaves.

America – Eurasia
Subsection Lapponica

Rhododendron lapponicum - 92368-pds- D



Rhododendron lapponicum - 92368-pds- D



Rhododendron lapponicum - 92368-pds- D



Rhododendron lapponicum 'Hillier's Form' - 93240-pds- P - 2012.0417

A photograph of a hiker in a light-colored shirt and shorts walking up a dirt trail on a steep, rocky mountain slope. The slope is covered in dense, low-lying green vegetation, which is identified as Rhododendron ferrugineum. The hiker is positioned on the left side of the frame, moving away from the viewer. The background shows more of the mountain and some trees at the top.

Europe – Subsection Rhododendron

Rhododendron
ferrugineum

Rhododendron ferrugineum



Rhododendron ferrugineum - Diablerets, Oldenegg 1900m, Gstaad - 14 Jul 1994



Rhododendron ferrugineum - Diablerets, Oldenegg 1900m, Gstaad - 14 Jul 1994



Rhododendron ferrugineum - Diablerets, Oldenegg 1900m, Gstaad - 14 Jul 1994



Rhododendron ferrugineum - Colle di Sampeyre, Italy, 2284m



Rhododendron ferrugineum - Colle di Sampeyre, Italy, 2284m



Rhododendron ferrugineum - Tende-Casterino, A.M. France - 2014.0724



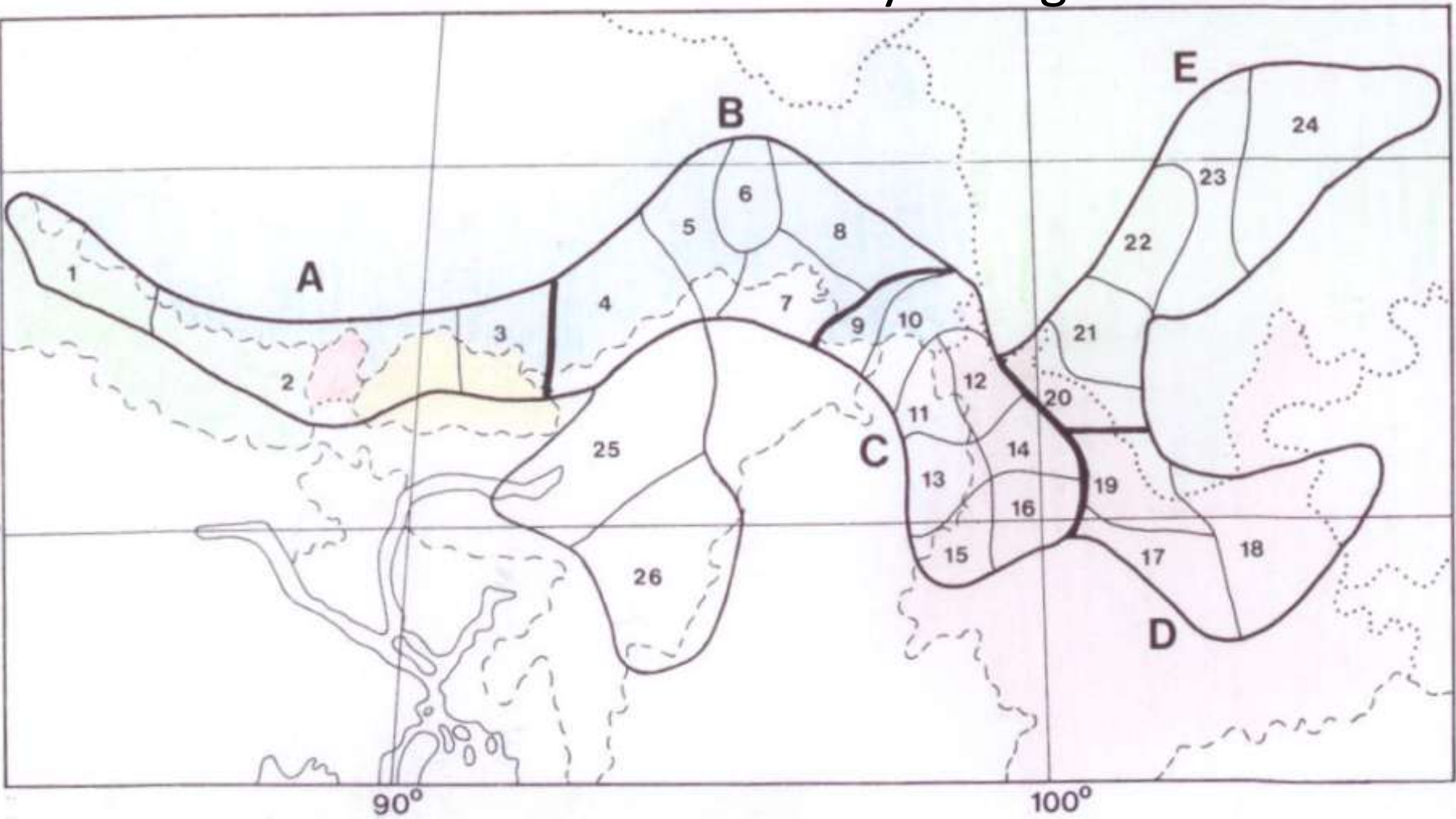
Rhododendron 'Laetevirens' (minus Carolinianum Group x ferrugineum)

Classification and distribution of selected rhododendrons

(selection shown on BDB study day of 19 April 2015 at Arboretum Wespelaar)

SUB-SECTIONS	America	Europe Siberia	Himalaya, SE Tibet	SW China	C & NE Asia	Japan
Section Pogonanthum			anthopogon kongboense laudandum	trichostomum primuliflorum		
Edgeworthia				pendulum		
Maddenia			maddenii ciliatum			
Moupinensia			dendrocharis (moupinense)			
Triflora			triflorum, oreotrephes	ambiguum lutescens augustinii yunnanense rigidum tatsiense davidsonianum concinnum trichantum oreotrephes		keiskei
Cinnabarina			cinnabarinum keysii			
Heliolepida			rubiginosum	rubiginosum		
Scabrifolia				racemosum scabrifolium hemitrichotum spinuliferum		
Caroliniana	minus, var. chapmanii					

Distribution of subgenus *Rhododendron* in the Sino-Himalayan Region



MAP 58. Zones (indicated by capital letters A-E) and areas (indicated by 1-26) of *Rhododendron* distribution. For further explanation see pp. 190-192.

A photograph of a Rhododendron anthopogon (Good pink form) in bloom. The plant is a dense, low-growing shrub with dark green, glossy, elliptical leaves. Numerous light pink flowers are scattered throughout the foliage, some in full bloom and others as buds. The background is a dark, forest floor with some dry grass and twigs. The text "Section Pogonanthum" is overlaid in white, sans-serif font in the upper left quadrant.

Section Pogonanthum

Rhododendron anthopogon (Good pink form) –
4000m above Thangu bridge, N. Sikkim - 2010.0508



Rhododendron anthopogon (Good pink form) –
4000m above Thangu bridge, N. Sikkim - 2010.0508



Rhododendron anthopogon - 4000m above Thangu bridge, N. Sikkim - 2010.0508



Rhododendron anthopogon - 4000m above Thangu bridge, N. Sikkim - 2010.0508



Rhododendron anthopogon subsp. hypenanthum 'Annapurna' –
Arboretum Wespelaar 8342A-ggd- K - 2006.0429 -



Rhododendron anthopogon - 4250 m , above of Thangu, N. Sikkim –
With Bergenia pururascens - 8 May 2010



Rhododendron kongboense (deep pink) – Arb. Wespelaar 09220-ggd-155 -



Rhododendron kongboense (deep pink) – Arb. Wespelaar 09220-ggd-155 -

Rhododendron laudandum
Top of Serkhyem La 4400 m S.E. TIBET



Rhododendron laudandum - 4400m, Serkhyem La, Tibet - 2013.



Rhododendron laudandum - 4400m, Serkhyem La, Tibet – 2013.



Rhododendron laudandum - 4400m, Serkhyem La, Tibet – 2013.



Rhododendron laudandum - 4400m, Serkhyem La, Tibet – 2013.

A photograph of a rocky mountain slope at 4000m altitude. The foreground is dominated by a large, dense cluster of white flowers with yellow centers, identified as Rhododendron primuliflorum. The flowers are growing on a rocky, scree-covered slope. In the background, there are more rocky peaks and a valley with green vegetation under a blue sky with light clouds.

Rhododendron primuliflorum
Shikashan 4000m
(Zhongdian)

Rhododendron primuliflorum - Shika Mountain 4000m, Zhongdian



Rhododendron primuliflorum - Shika Mountain 4000m, Zhongdian



Rhododendron primuliflorum - Shika Mountain 4000m, Zhongdian



Rhododendron primuliflorum - Shika Mountain 4000m, Zhongdian

R. primuliflorum

Mugecuo,

Kangding,

Sichuan

Rhododendron primuliflorum aff. - Mugecuo, Kangding - 2009.0628



Rhododendron primuliflorum aff. - Mugecuo, Kangding - 2009.0628



Rhododendron primuliflorum aff. VS trichostomum (right)
Mugecuo, Kangding - 2009.0628



Rhododendron trichostomum
(Zhongdian)

Rhododendron trichostomum - out of Zhongdian to Hongshan 3200m



Rhododendron trichostomum - out of Zhongdian to Hongshan 3200m



Rhododendron trichostomum - out of Zhongdian to Hongshan 3200m



Rhododendron trichostomum – Herkenrode 85413-pds- K - 2006.0508 -



Rhododendron trichostomum – Herkenrode 85413-pds- K - 2006.0508 -

A photograph of a large tree trunk with a dense canopy of green leaves and white flowers. The tree trunk is thick and textured, with a large hollowed-out section on the left. The canopy is composed of many branches with small, oval-shaped green leaves and numerous white flowers. The background shows a lush green forest with a river visible in the distance.

Subsection Edgeworthia

Rhododendron pendulum - Dombang
valley, Lachung, Sikkim - 2010.0507



Rhododendron pendulum - Dombang
valley, Lachung, Sikkim - 2010.0507



Rhododendron pendulum (Sin 1740) - Benmore -

A photograph of a dense forest with a prominent cluster of white flowers in the center. The text "Subsection Maddenia" is overlaid in white. The background is a lush green forest with various tree species and a rocky cliff face on the right side.

Subsection Maddenia

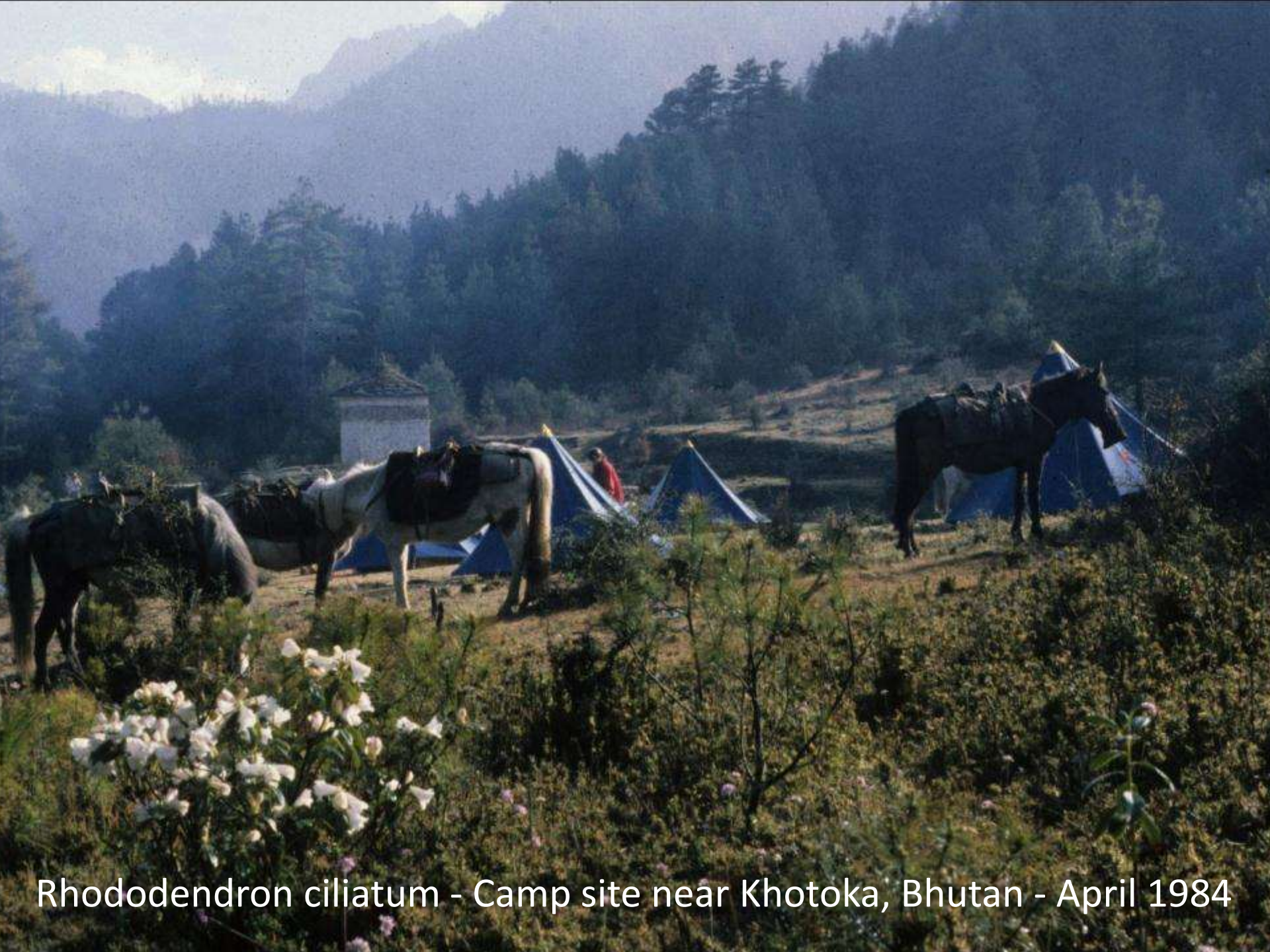
-*Rhododendron maddenii* – Cliffs on road to Gangtok - 2010.0509 105



-*Rhododendron maddenii* – Cliffs on road to Gangtok - 2010.0509 105



-*Rhododendron maddenii* – Cliffs on road to Gangtok - 2010.0509 105



Rhododendron ciliatum - Camp site near Khotoka, Bhutan - April 1984



Rhododendron ciliatum - Camp site near Khotoka, Bhutan - April 1984



Rhododendron ciliatum - Camp site near Khotoka, Bhutan - April 1984



Rhododendron ciliatum - Camp site near Khotoka, Bhutan - April 1984



Rhododendron ciliatum - Dombang valley, Lachung, Sikkim - 2010.0507



Rhododendron ciliatum – Arb. Wespelaar 97129-tre-163 - 2005.0404



R. ciliatum - Wespelaar 97129-tre-163 - after bad winter 2012.0326



R. ciliatum – Arb. Wespelaar - 97129-tre-163 - 2015.0412



R. ciliatum – Arb. Wespelaar - 97129-tre-163 - 2015.0412



Rh. 'Snow Lady' (*ciliatum* x *leucaspis*) - 90963-esv-722 - (2006)



Rh. 'Snow Lady' (*ciliatum* x *leucaspis*) - 90963-esv-722 - (2006)



Rh. 'Snow Lady' (*ciliatum* x *leucaspis*) - 90963-esv-722 - (2006)



Rh. 'Snow Lady' (*ciliatum* x *leucaspis*) - 90963-esv-722 - (2006)

Rh. 'Cilpinense' (ciliatum x moupinense) - AW 85606-pds-475 -



Rh 'Cilpinense' (ciliatum x moupinense) - AW 85606-pds-475-



Rh. 'Cilpinense' (ciliatum x moupinense) - AW 85606-pds-475 -





Rhododendron 'Seta' (moupinense x spinuliferum) – AW 00264-pds-175



Rhododendron 'Seta' (*moupinense* x *spinuliferum*) – AW 00264-pds-175



Rhododendron 'Talavera' (moupinense x sulfureum) – AW 05123-spi



Subsection Moupinensia
Rhododendron dendrocharis

Rhododendron dendrocharis - Glendoick - 2013.0422



Rhododendron dendrocharis - Glendoick - 2013.0422




Rhododendron dendrocharis - Glendoick - 2013.0422

Classification and distribution of selected rhododendrons

(selection shown on BDB study day of 19 April 2015 at Arboretum Wespelaar)

SUB-SECTIONS	America	Europe Siberia	Himalaya, SE Tibet	SW China	C & NE Asia	Japan
Section Pogonanthum			anthopogon kongboense laudandum	trichostomum primuliflorum		
Edgeworthia				pendulum		
Maddenia			maddenii ciliatum			
Moupinensia			dendrocharis (moupinense)			
Triflora			triflorum, oreotrephes	ambiguum lutescens augustinii yunnanense rigidum tatsiense davidsonianum concinnum trichantum oreotrephes		keiskei
Cinnabarina			cinnabarinum keysii			
Helirolepida			rubiginosum	rubiginosum		
Scabrifolia				racemosum scabrifolium hemitrichotum spinuliferum		
Caroliniana	minus, var. chapmanii					

A close-up photograph of several white flowers of Rhododendron triflorum. The flowers are five-petaled with prominent yellow stamens and reddish-brown anthers. They are set against a background of dark green, glossy leaves. The text 'Subsection Triflora' and 'Rhododendron triflorum' is overlaid in white on the upper right portion of the image.

Subsection Triflora

Rhododendron triflorum

Rhododendron triflorum - Sikkim, Lachen to Thangu, 2900 m - 2010.0508



Rhododendron triflorum (C 9712) - 09281-ggd-161 - 2013.0522

R. triflorum var. *mahogani* - Serkhyem La, Tibet - 2013.0608







Rhododendron triflorum var. mahogani - Serkhyem La, Tibet - 2013.0608



Rhododendron triflorum var. mahogani - Serkhyem La, Tibet - 2013.0608



R. triflorum var. bauhiniflorum – Closerie du Rond chene - 1993.05 -



Rhododendron ambiguum

Rhododendron ambiguum – HEMELRIJK n°19088 - 2012.0508



Rhododendron ambiguum – HEMELRIJK n°19088 - 2012.0508



Rhododendron ambiguum - 89370-ggd- Q - 2013.0430

R. ambiguum – Herkenrode 76007-hil- Q - 2011.0416



Rhododendron ambiguum 'Golden Summit' (KR 195) - 08466-ggd-161 -

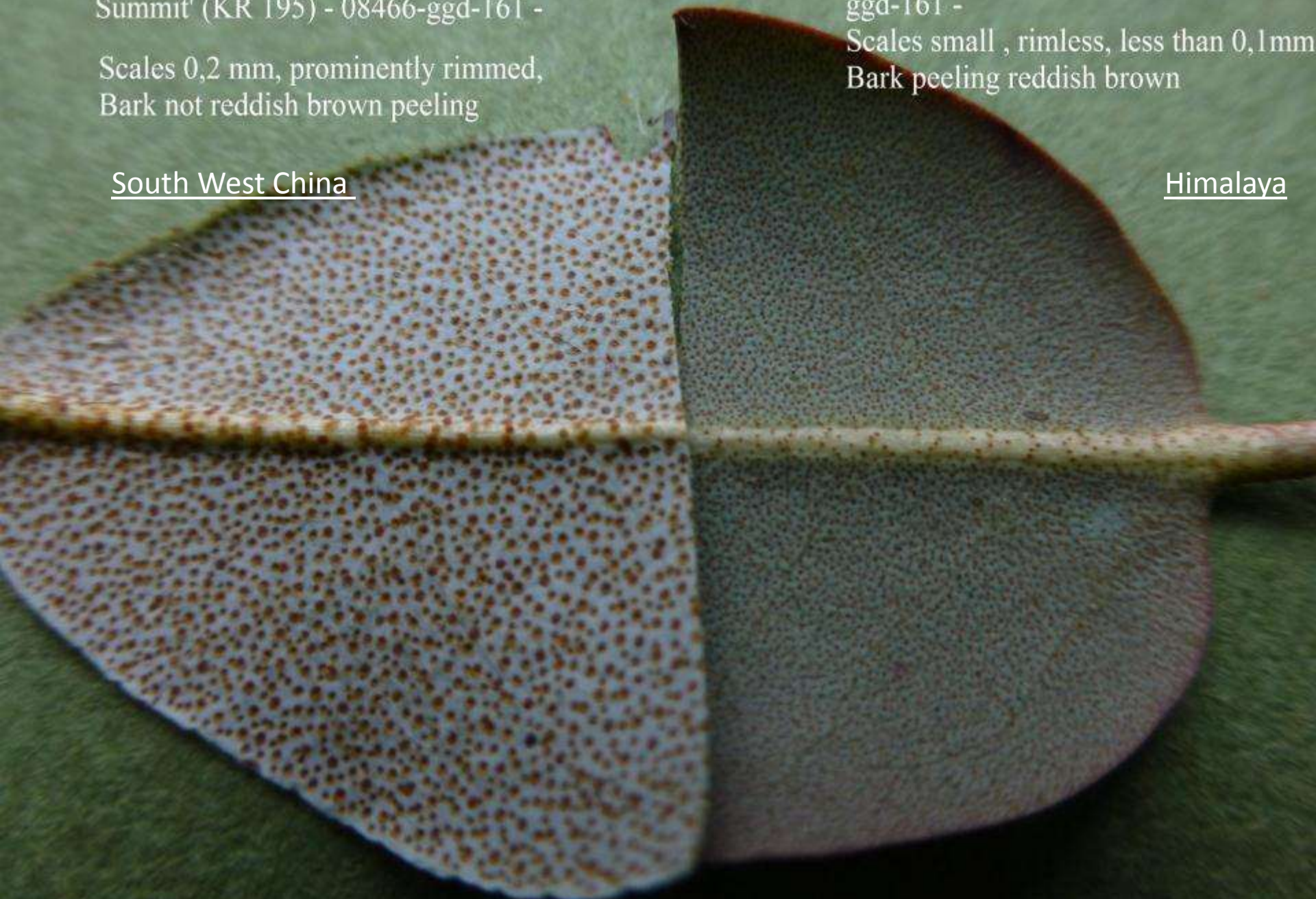
Scales 0,2 mm, prominently rimmed,
Bark not reddish brown peeling

South West China

Rhododendron triflorum (C 9712) - 092
ggd-161 -

Scales small , rimless, less than 0,1mm
Bark peeling reddish brown

Himalaya





Rhododendron
lutescens

Rhododendron lutescens – Wespelaar 98099-pds-174 - 2008.0313



Rhododendron lutescens – Wespelaar 98099-pds-174 - 2008.0313

R. 'Remo' (valentianum x lutescens) - 82070-reu-476 - 2015.0512





Rhododendron
augustinii

Rhododendron augustinii - 93199-pds-791 - 2010.0421



Rhododendron augustinii - 93199-pds-791 - 2010.0421

Rhododendron augustinii - 98457-div-476 - 2014.0426__VS
Rhododendron augustinii (AC 4155, Qi Pan Go Wenshuan,
China) - 07251-wld-161 (right)



Rhododendron yunnanense



Rhododendron yunnanense -
07071-pds-475 - 2013.0509



R. yunnanense - Napahai, Zhongdian, Yunnan - 2014.0618



Rhododendron yunnanense –
Hongshan, from Langdu cheese factory, Yunn. -



Rhododendron yunnanense - Cangshan, Dali , Yunnan - 2007.0405



Rhododendron yunnanense (Cox 2637, Lijiang)
- 92160-wld-475 - 2011.0412

Rhododendron rigidum



Rhododendron rigidum – Herkenrode 77052-hil- I - 2006.0506 -



Rhododendron rigidum – Herkenrode 77052-hil- I - 2006.0506 -



Rhododendron
tatsiense

Rhododendron tatsienense aff. (L.951) - 89335-ggd- Q - 2015.0413



Rhododendron tatsienense aff. (L.951) - 89335-ggd- Q - 2015.0413



Rhododendron tatsienense aff. (L.951) - 89335-ggd- Q - 2015.0413



Rhododendron davidsonianum

Rhododendron davidsonianum 'Ruth Lyons' –
Rhodo Species Foundation Seattle - 2008.0426 -



Rhododendron davidsonianum 'Ruth Lyons' –
Rhodo Species Foundation Seattle - 2008.0426 -



Rhododendron davidsonianum – Glenarn, Scotland - 2008.0502



Rhododendron concinnum

R. concinnum var. benthamianum - Hemelrijk n° 819 in 376 - 2009.042



R. concinnum var. *benthamianum* - Hemelrijk n° 819 in 376 - 2009.042



Rhododendron concinnum - Mugecuo, Kangding, Sich. - 2009.0628



Rhododendron concinnum - 95245-wld- 82 - 2010.0421



Rhododendron concinnum (Wenchuan Pass, Sichuan, China) - 09094-v



Rhododendron
trichanthum

Rhododendron trichanthum - 94042-pds-464 - 2011.0511



Rhododendron trichanthum - 94042-pds-464 - 2011.0511



Rhododendron trichanthum - 94042-pds-464 - 2011.0511



Rhododendron trichanthum - 94042-pds-464 - 2011.0511

Rhododendron oreotrephes



R. oreotrephes - Hongshan, down from Gegon La, to Zhongdian, N. Yunnan - 2014.0615



Rhododendron oreotrephes - 77190-hil- Q - 2011.0414



Rhododendron oreotrephes - 77190-hil- Q - 2011.0414



Rhododendron oreotrephes - 77190-hil- Q - 2011.0414



Rhododendron Oreoroyle Group (oreotrephes x cinnabarinum Roylei Group) - 95124-pds-120 - 2014.0707

**Rhododendron Oreoroyle
Group (oreotrephes x
cinnabarinum Roylei Group) -
95124-pds-120 -**

**R. cinnabarinum
Roylei group**

R. oreotrephes





**Rhododendron oreotrephes or cinnabarinum –
Serkhyem La, Tibet - 2013.0608**



Rhododendron oreotrephes or cinnabarinum ? - Serkhyem La, Tibet - 2013.0608



Rhododendron oreotrephes or cinnabarinum ? - Serkhyem La, Tibet - 2013.0608



Rhododendron oreotrephes or cinnabarinum ?
Serkhyem La, Tibet - 2013.0608

A close-up photograph of a branch of an azalea plant. The branch is covered with several vibrant pink flowers and green, oval-shaped leaves. The flowers have five petals and prominent stamens. The background is a soft-focus view of the ground and other branches.

Subsection cinnabarina
R. cinnabarinum


R. cinnabarinum subsp. *xanthocodon* Purpurellum Group



R. cinnabarinum subsp. *xanthocodon* Purpurellum Group - 03039-pds-475



R. cinnabarinum subsp. *tamaense* KW 20837 1973.4187-F



Rhododendron cinnabarinum
subsp. xanthocodon (KR 884, Bhutan)
- 95246-wld-168 -



Rhododendron cinnabarinum subsp. *xanthocodon* (KR 884, Bhutan) - 95246-wld-168 -





Rhododendron cinnabarinum - Sikkim, Lachen to Thangu - 2010.0508



Rhododendron cinnabarinum - Sikkim, Lachen to Thangu - 2010.0508



Rhododendron cinnabarinum - Sikkim, Lachen to Thangu - 2010.0508



Rhododendron cinnabarinum - Sikkim, Lachen to Thangu - 2010.0508



Rhododendron cinnabarinum - Sikkim, Lachen to Thangu - 2010.0508



R. cinnabarinum Blandfordiiflorum Group - 77067-hil- 1 - 2005 11 jun 05



R. cinnabarinum Roylei Group - 98053-pds- I - 5 mai 05 c -



Rhododendron 'Biskra'
(cinnabarinum Roylei Group x ambiguum)
Herkenrode 85416-pds-m.N - 20 apr 2005 -



Rhododendron 'Biskra'
(cinnabarinum Roylei Group x ambiguum)
Herkenrode 85416-pds-m.N - 20 apr 2005 -



Rhododendron keysii

Rhododendron keysii (AC 5371, West Kameng A. Pradesh, India)
07272-wld-161 - 2014.0529



Rhododendron keysii (AC 5371, West Kameng A. Pradesh, India)

07272-wld-161 - 2014.0529



Rhododendron keysii - Castle
Howard, Raywood - 2012.0526



Rhododendron keysii - Burncoose, Cornwall - 2008.0323

Subsection Heliolepida
Rhododendron rubiginosum



Rhododendron rubiginosum - Herkenrode 76036-hil- P - 2006.0416 -



Rhododendron rubiginosum var. *rubiginosum*
- Benmore - 2008.0504 -



Rhododendron rubiginosum - 76036-hil- P - 2006.0415 -

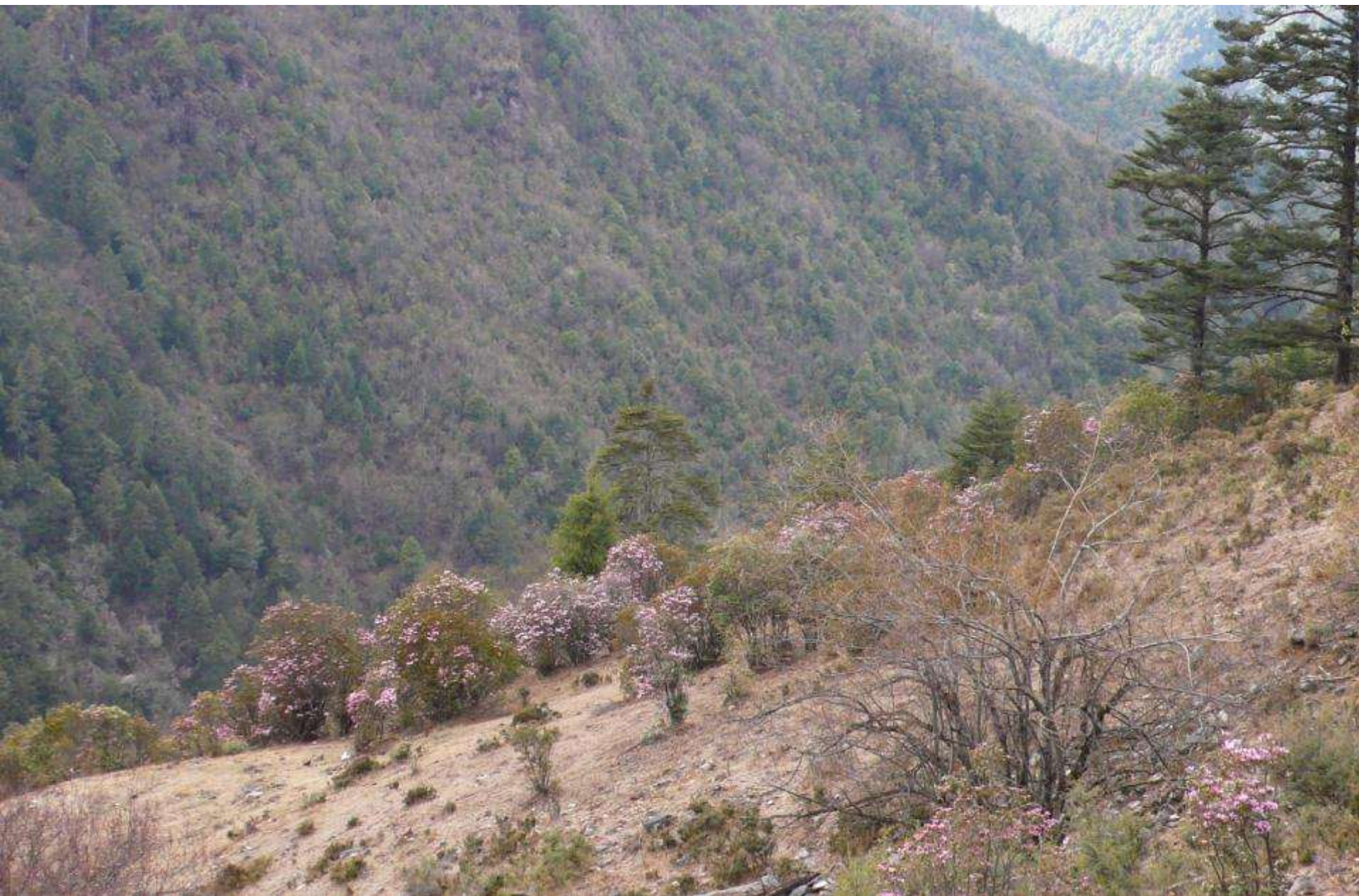


Rhododendron rubiginosum - Laojun-99 Dragon, Jian Chuan (on slope in distance) - 2007.0407











R. (racemosum x rubiginosum) versus *R. racemosum* – Cangshan, Dali Y

A photograph of a Rhododendron racemosum bush in full bloom. The flowers are a vibrant pink color and are arranged in dense, terminal racemes. The leaves are dark green and glossy. The background consists of a dense thicket of trees and foliage, with some thin, vertical poles visible on the left side. The overall scene is set in a natural, outdoor environment.

Subsection scabrifolia
Rhododendron racemosum

Rhododendron racemosum - Cangshan, Dali - 2007.0405



Rhododendron racemosum - Cangshan, Dali - 2007.0405



Rhododendron racemosum - Cangshan, Dali - 2007.0405



Rhododendron racemosum - Cangshan, Dali - 2007.0405

A close-up photograph of a Rhododendron scabrifolium plant. The image shows a cluster of white, five-petaled flowers with prominent stamens and a yellowish center. The leaves are dark green, elongated, and have a distinctively rough or scabrous texture. The background is a blurred green, suggesting a natural garden setting.

Rhododendron scabrifolium

Rhododendron scabrifolium - Glendoick - 2013.0422

A photograph of a Rhododendron hemitrichotum bush in bloom. The plant is covered in numerous small, light purple flowers. It is situated in a wooded area with a large tree trunk visible in the background and a ground covered in brown, fallen leaves and pine needles. The text "Rhododendron hemitrichotum" is overlaid in white on the image.

Rhododendron
hemitrichotum

Rhododendron hemitrichotum - 86170-pds-475 - 2015.0508



Rhododendron hemitrichotum - 86170-pds-475 - 2015.

A photograph of a dense, woody shrub with numerous green, lanceolate leaves and clusters of small, bright red flowers. The plant is the central focus of the image, filling most of the frame. The text 'Rhododendron spinuliferum' is overlaid in white, sans-serif font in the center of the image.

Rhododendron
spinuliferum

Rhododendron spinuliferum road to Jiu Xiang Caves – Kunming, Yunnan –



Rhododendron spinuliferum road to Jiu Xiang Caves – Kunming, Yunnan –



Rhododendron spinuliferum - Tremear, Cornwall - 2008.0327 -



R. 'Spinulosum' (spinuliferum x racemosum) - 74112-hil- D - 2008.0322



R. 'Spinulosum' (spinuliferum x racemosum) - 74112-hil- D - 2008.0322

Scabrifolia				racemosum scabrifolium hemitrichotum spinuliferum		
Caroliniana	minus, var. chapmanii					
SUB-SECTIONS	America	Europe Siberia	Himalaya, SE Tibet	SW China	C & NE Asia	Japan
Lapponica	lapponicum	lapponicum		complexum telmateium fastigiatum hippophaeoides polycladum nivale rupicola russatum cuneatum		
Rhododendron		ferrugineum				
Rhodorastra					dauricum mucronulatum	dauricum mucronulatum
Saluenensia				saluenense calostrotum		
Ledum	groenlandicum columbianum	groenlandicum				
Micrantha					micranthum	
Boothia			leucaspis			
Lepidota			lepidotum	lepidotum		
Glauca			glaucophyllum	charitopes		
Campylogyna				campylogynum		
Trichoclada				lepidostylum		

A scenic mountain landscape. The foreground is a grassy slope covered with numerous small purple flowers. The middle ground shows a dense forest of green trees. In the background, there are several mountain ranges, with the highest peaks covered in snow and partially obscured by a light mist or haze. The sky is bright and overcast.

Subsection Lapponica

Beimashan, North Yunnan - 2014. 0616





R. telmateium vs. complexum - 4400m, Shika Mountain, Zongdian - 2008.0

Rhododendron fastigiatum



Rhododendron fastigiatum - 94050-pds- I - 2008.0621



Rhododendron fastigiatum - 94050-pds- I - 2008.0621

Rhododendron hippophaeoides

Rhododendron hippophaeoides - Geza to Langdu - 2008.0630



Rhododendron hippophaeoides - Geza to Langdu - 2008.0630



Rhododendron hippophaeoides - Geza to Langdu - 2008.0630

Rhododendron hippophaeoides
'Haba Shan' - 08402-ggd-468 -



Rhododendron hippophaeoides
'Haba Shan' - 08402-ggd-468 -



Rhododendron polycladum

R. polycladum Scintillans Group - 87048-pds- S - 2013.0505



R. polycladum Scintillans Group - 87048-pds- S - 2013.0505



R. polycladum Scintillans Group - 87048-pds- S - 2013.0505

R. nivale

R. hippophaeoides

Rhododendron nivale

Rhododendron nivale VS. hippophaeoides - Geza to Langdu, N Yunn. - 200



Rhododendron nivale - North of Sangdai 4500m Yunn./Sich border - 2008.0702



Rhododendron nivale - North of Sangdai 4500m Yunn./Sich border - 2008.0702



Rhododendron
rupicola

R. nivale, rupicola, impeditum aff. – Plateau, Geza to Langdu - 2008.0630



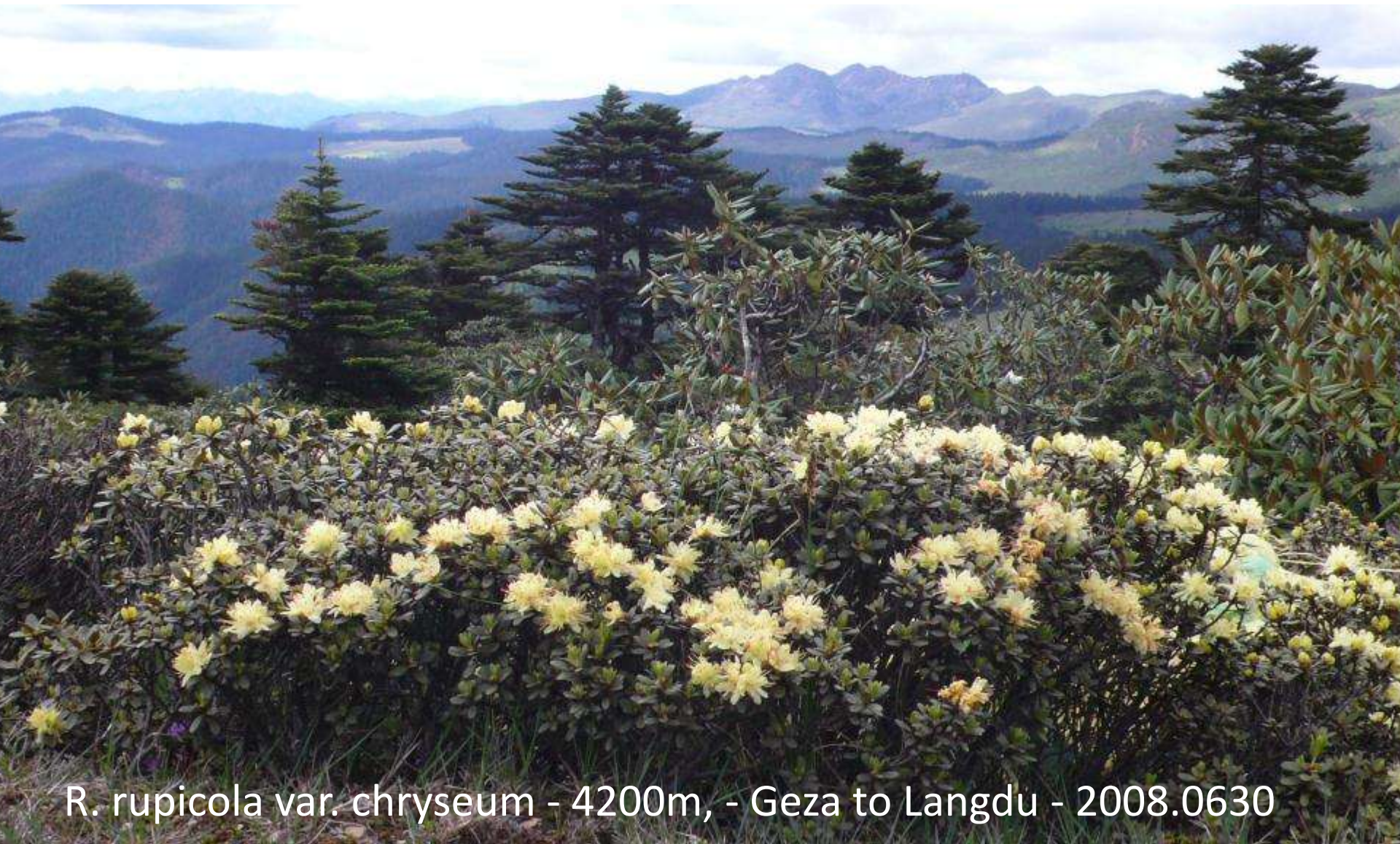
Rhododendron rupicola - Geza to Langdu - 2008.0630



Rhododendron rupicola - Geza to Langdu - 2008.0630



R. rupicola var. *chryseum* - 4200m, - Geza to Langdu - 2008.0630



R. rupicola var. *chryseum* - 4200m, - Geza to Langdu - 2008.0630



R. rupicola var. *chryseum* - 4200m, - Geza to Langdu - 2008.0630



upicola var. *chryseum* - 4200m, - Geza to Langdu - 2008.0630



Rhododendron rupicola var. chryseum –
Baimashan, to Dequen - 2008.0704

A close-up photograph of a Rhododendron russatum 'Collingwood Ingram' bush. The image shows numerous vibrant purple flowers with five petals and prominent stamens, interspersed with dark green, glossy, oval-shaped leaves. The background is a soft-focus green, suggesting a garden setting. The text 'Rhododendron russatum' is overlaid in white, sans-serif font in the upper center of the image.

Rhododendron russatum

Rhododendron russatum 'Collingwood Ingram' - 84054-ggd- J - 2008.0



Rhododendron russatum 'Collingwood Ingram' - 84054-ggd- J - 2008.03



Rhododendron 'Gristede' (russatum x) - 01032-pds-122 - 2008.0322 -



Rhododendron 'Gristede' (russatum x) - 01032-pds-122 - 2008.0322 -



Rhododendron Russautinii Group (russatum x augustinii) - 78104-hil- P

A photograph of a Rhododendron cuneatum bush in full bloom, with numerous light purple flowers. The bush is situated in a wooded area with a ground covered in pine needles and fallen leaves. Several tree trunks are visible in the background. The text "Rhododendron cuneatum" is overlaid in white on the center of the image.

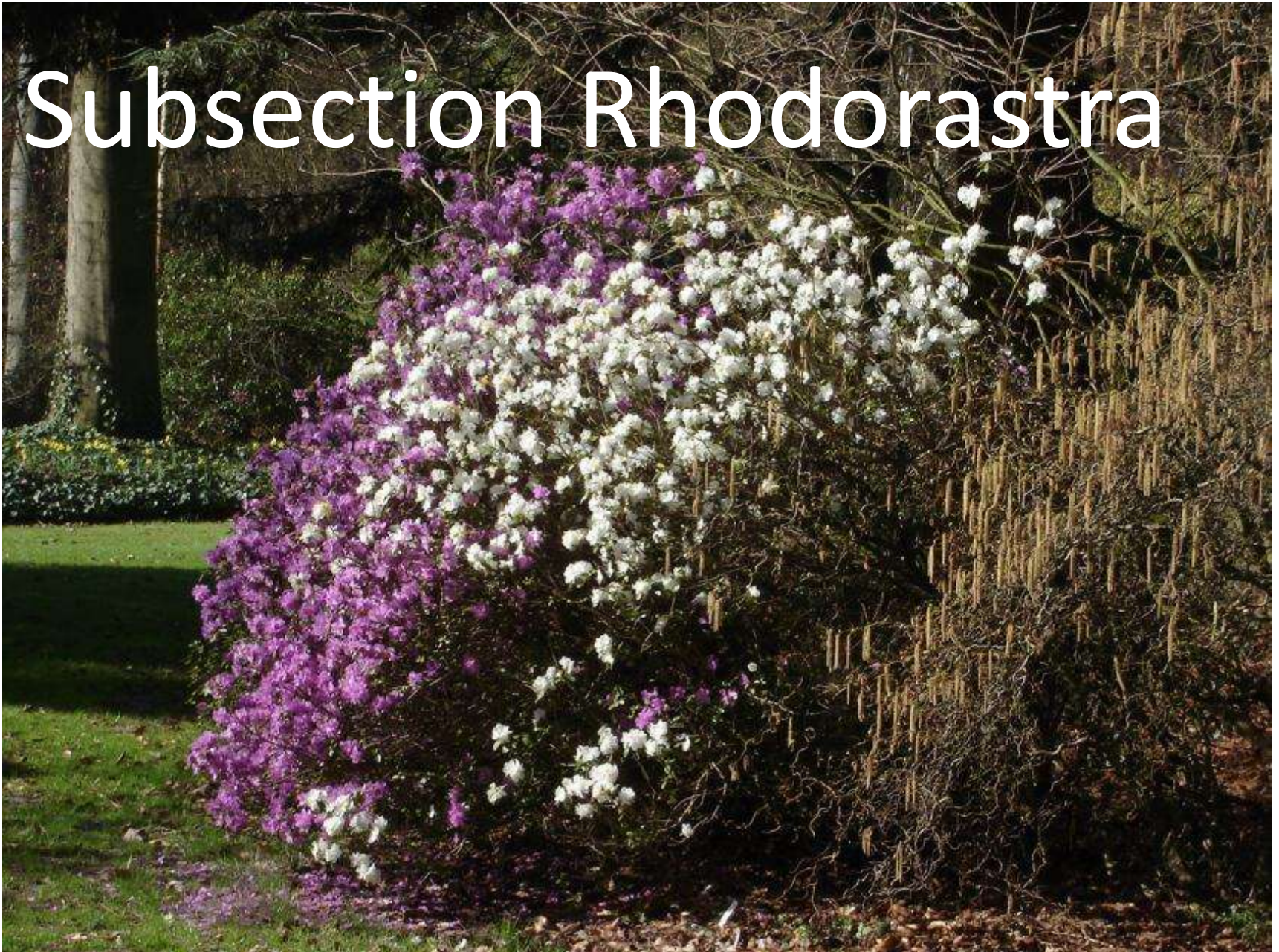
Rhododendron cuneatum

Rhododendron cuneatum (L&S) - 86091-ggd-476 - 2015.0413



Rhododendron cuneatum (L&S) - 86091-ggd-476 - 2015.0413

Subsection Rhodorastra



R. dauricum (dark form) - 88063-dbl versus *R. dauricum* 'Hokkaido' -



Rhododendron
dauricum

Rhododendron dauricum 'Hemelrijk' - 97139-pds- 12 - 2008.0127



Rhododendron dauricum 'Hemelrijk' - 97139-pds- 12 - 2008.0127



Rhododendron
mucronulatum

Rhododendron dauricum (dark form) - 88063-dbl- A - 18 mar 2005



Rhododendron dauricum (dark form) - 88063-dbl- A - 18 mar 2005



Rhododendron mucronulatum (Cheju, Doleshy) - 89313-ggd-475 - 2011.0



Rhododendron mucronulatum var. *ciliatum* (Mt.Sobaek) - 99174



Rhododendron mucronulatum (pink sd/ls) - 96116-pds-164 - 2010.0407



Rhododendron mucronulatum (pink sdls) - 96116-pds-164 - 2010.0407

A photograph of a Rhododendron saluenense bush growing on a rocky cliffside. The flowers are a vibrant pinkish-purple color and are in full bloom. The background shows a rugged, rocky landscape with some distant mountains under a clear sky.

Subsection
Saluenensia

Rhododendron
saluenense

R saluenense subsp. chameunum - Geza to Langdu, Yunnan 4200m - 2008



R. saluenense subsp. *chameunum* - Geza to Langdu, Yunnan 4200m - 2008



R. saluenense subsp. *chameunum* - Geza to Langdu, Yunnan 4200m - 2008



R saluenense subsp. *chameunum* - 89363-ggd- S - 2007.0708



R saluenense subsp. chameunum - 89363-ggd- S - 2007.0708

R. calostrotum



R. calostrotum subsp. calostrotum - Yu 19757 - RBG Edinburgh - 2013.0410



R. calostrotum subsp. keleticum Radicans Group - 93245-pds- S - 2008.



R. calostrotum subsp. *keleticum* Radicans Group - 93245-pds- S - 2008.



R. calostrotum subsp. *keleticum* Radicans Group - 93245-pds- S - 2008

A close-up photograph of a Rhododendron micranthum plant. The image shows several stems with dark green, lanceolate leaves. The central focus is a cluster of small, white, five-petaled flowers with prominent stamens. Below the open flowers, there are numerous unopened buds, which are small and greenish-yellow. The background is dark and out of focus, showing more foliage.

Subsection Micrantha
Rhododendron micranthum

Rhododendron micranthum – Herkenrode 90895-div-m.W - 4 Jun 2005 -



Rhododendron micranthum – Herkenrode 90895-div-m.W - 4 Jun 2005 -

R. groenlandicum (ex-Ledum)



A photograph of a Rhododendron leucaspis bush in bloom. The plant has dark green, glossy leaves and numerous white flowers with yellow centers and some reddish-brown markings. The ground is covered with a thick layer of dry, brown leaves. The text "Subsection Boothia" and "Rhododendron leucaspis" is overlaid in white on the image.

Subsection Boothia
Rhododendron leucaspis

Rhododendron leucaspis - 98180-pds-176 - 2006.0415 -



Rhododendron leucaspis - 98180-pds-176 - 2006.0415 -



Rhododendron 'Silkcap' (leucaspis x Cilpinense Group) - 85604-pds-475 .

Subsection Lepidota *Rhododendron lepidotum*



R. lepidotum - Gorge out of Lijiang, Yunnan - 2008.0625



R. lepidotum - Gorge out of Lijiang, Yunnan - 2008.0625



Rhododendron lepidotum (s.s.w.) - 83356-ggd- J - 15 mai 2005 -



R. lepidotum (Taksang Monastery , Bhutan) – 92161 – 13 June 2004

A large, dense bush of Rhododendron glaucophyllum is the central focus, covered in numerous small, light pink flowers. The plant has dark green, glossy leaves. It is situated in a rocky, mossy environment, with large grey rocks scattered around it. In the background, a stone wall and a red vehicle are partially visible. The overall scene is a natural, outdoor setting.

Subsection Glauca
R. glaucophyllum

Rhododendron glaucophyllum - Sikkim, Yumthang Valley - 2010.0506



Rhododendron glaucophyllum - Sikkim, Yumthang Valley - 2010.0506



Rhododendron glaucophyllum - Sikkim, Yumthang Valley - 2010.0506



Rhododendron charitopes

R charitopes subsp. charitopes (F 25570) - 09251-ggd-162 - 2013.0519



R charitopes subsp. charitopes (F 25570) - 09251-ggd-162 - 2013.0519



Subsection campylogyna
R. campylogynum



Rhododendron 'Egret' (campylogynum x White Lace) - Ard Daraich - 201



Rhododendron 'Egret' (campylogynum x White Lace) - Ard Daraich - 201



**Rhododendron 'Peter Chappell' (glaucophyllum x campylogynum) –
14053-ggd-p45 - 2014.0426**

A photograph of a Rhododendron lepidostylum plant in a natural setting. The plant is a dense, bushy shrub with numerous green, ovate leaves. Some small, pale yellow flowers are visible, particularly in the lower-left quadrant. The ground is covered with dry pine needles and brown leaves. The text "Subsection Trichoclada" and "Rhododendron lepidostylum" is overlaid in white on the image.

Subsection Trichoclada
Rhododendron lepidostylum

Rhododendron lepidostylum - 87245-pds-475 - 2006.0604-



Rhododendron lepidostylum - 87245-pds-475 - 2006.0604-



Rhododendron lepidostylum - 87245-pds-475 - 2006.0604-



*The
End*