

Maples in the Macrantha and Palmata (Sinensia) sections

IDS Study day at Hergest Croft

15 October 2016

(Philippe de Spoelberch)

Section Macrantha

sikkimense

crataegifolium

caudatifolium (syn. Kawakamii)

rubescens (syn. morrisonense)

dauidii

-grosseri

metcalfii

capillipes

morifolium

micranthum

tschonoskii (+australe)

- koreanum

rufinerve

tegmentosum

pensylvanicum

pectinatum

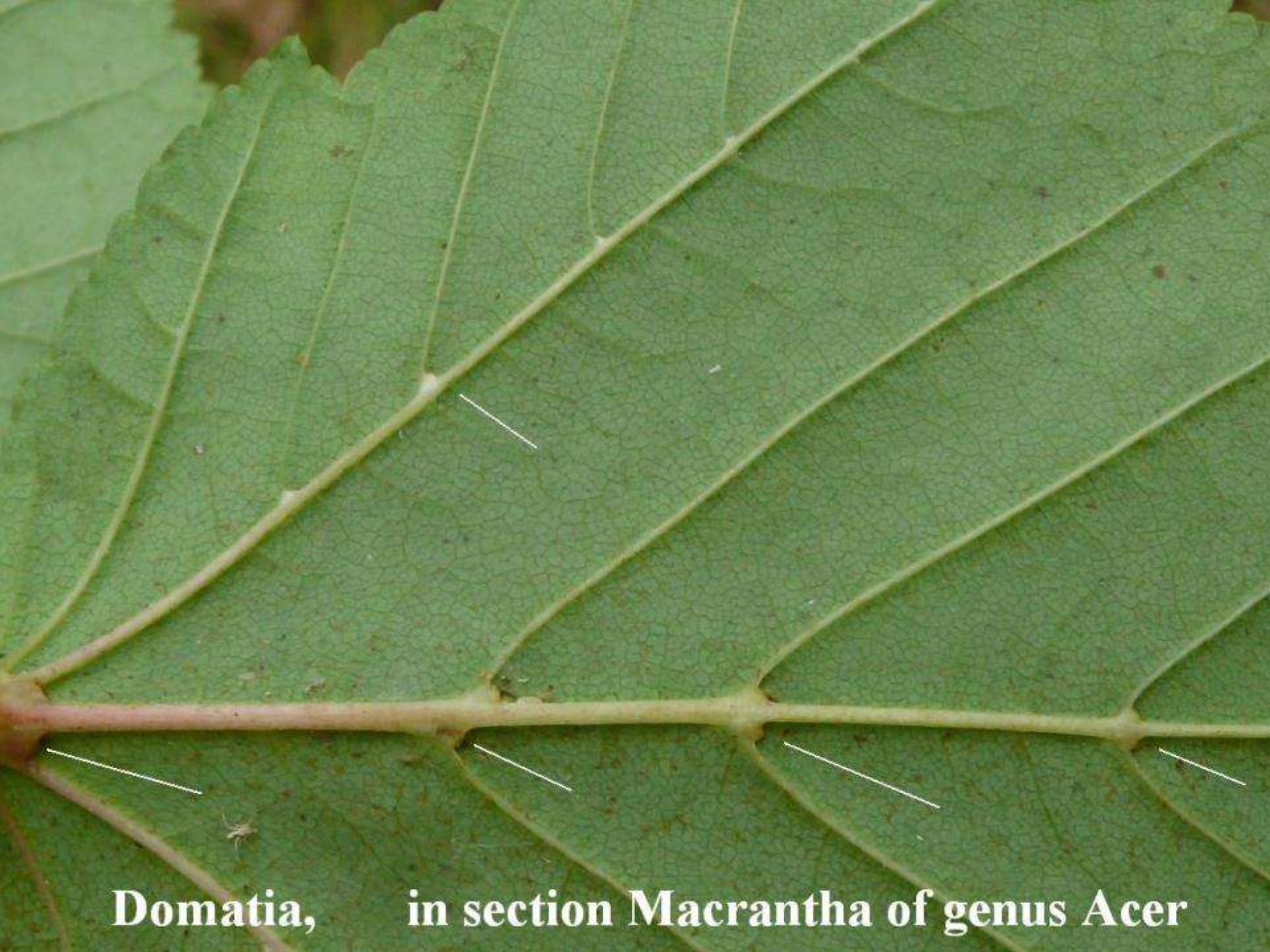
-laxiflorum

-pectinatum

-maximowiczii

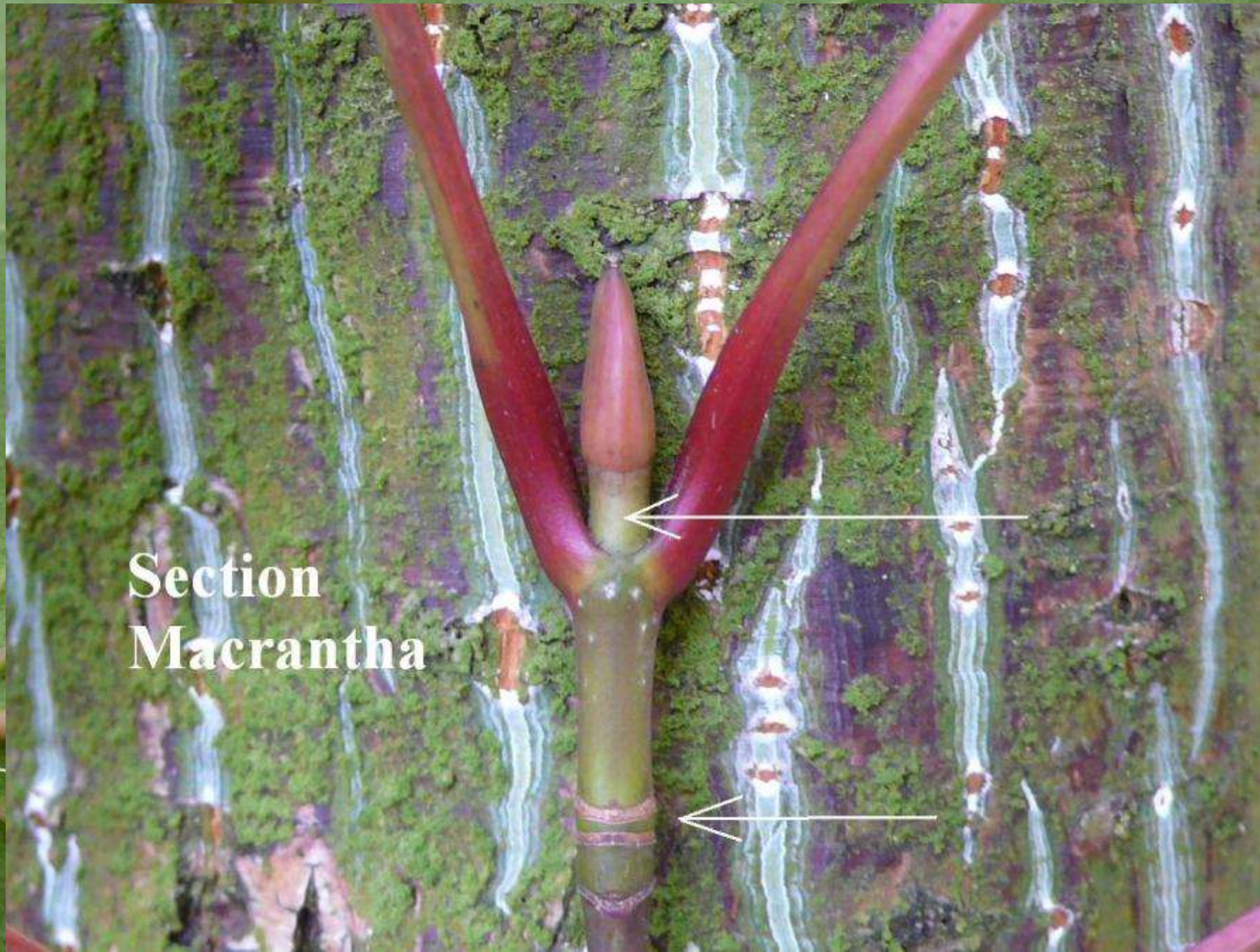
-forrestii

-taronense (+ chienii)



Domatia, in section Macrantha of genus Acer

**Section
Macrantha**





Acer sikkimense (syn. *Hookeri*) - Bansoi bridge on Teesta river, 2500m, N. Sikkim - 2010.0509



Acer sikkimense (syn. *Hookeri*) - Bansoi bridge on Teesta river, 2500m, N. Sikkim - 2010.0509



Acer sikkimense – (Arboretum Wespelaar) AW 14529-div-162 - 2016.0704 52



Acer sikkimense aff. (Foster 0629) - 10215-wld-163 - 2011.0510 235



Acer sikkimense 33.0181 Westonbirt UK 160618 119 – (Photo K. Camelbeke)



Acer crataegifolium - Tono Hetsuri, Okawa river, Honshu, Japan - IDS- 29 Oct 1992



Acer crataegifolium (Lake Hibara, Mt. Azuma) - 94311a-wld-112 - 2014.1129



Acer crataegifolium (Lake Hibara, Mt. Azuma) - 94311-wld-112 - 2016.0702 080



Acer crataegifolium (Lake Hibara, Mt. Azuma) - 94311-wld-112 - 2016.0702 080



Acer crataegifolium (Lake Hibara, Mt. Azuma) - 94311-wld-112 - 2016.0702 080

(BBJMT 230, Japan) -
10179-wld-136 -

94311

Taroko Gorge, Taiwan
AW 16160

(Lake Hibara, Mt. Azuma) -
Japan - AW 94311

BHM-12089, Taiwan, 3384m
AW 16158

16160

Acer crataegifolium

Acer caudatifolium

Acer davidii 'Serpentine'



Acer caudatifolium (syn *kawakami*) - 2560m, Dayuling,, Taiwan - 2012.1112 199



Acer caudatifolium (syn *kawakami*) - 2560m, Dayuling,, Taiwan - 2012.1112 199



Acer caudatifolium (syn *kawakami*) - 2560m, Dayuling,, Taiwan - 2012.1112 199



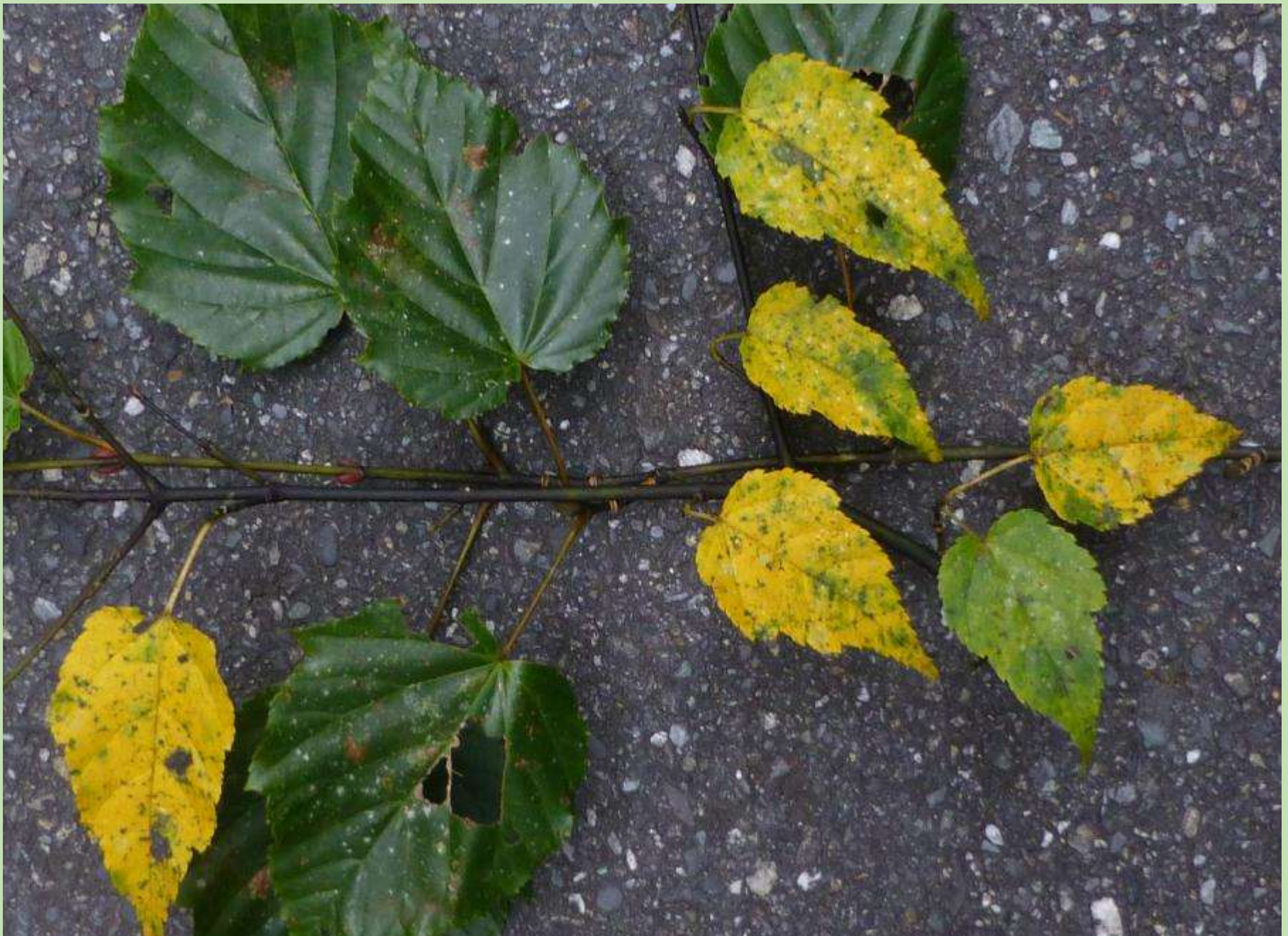
Acer caudatifolium - UBC Bot. Garden (ETOT 054 - 30832-049-93 046), Vancouver



Acer caudatifolium - UBC Bot. Garden (ETOT 054 - 30832-049-93 046), Vancouver



Acer caudatifolium - UBC Bot. Garden (ETOT 054 - 30832-049-93 046), Vancouver



Acer rubescens and *caudatifolium* - Taipingshan Villa, Taiwan - 2011.1110 015



Acer rubescens - Taroko gorge to Dayuling , IDS in Taiwan - 2012.1112 145



Acer rubescens - Taipangshan – IDSin Taiwan - 2012.1110 066



Acer rubescens x *caudatifolium* poss. - Dayuling – IDS in Taiwan - 2012.1112 176



Acer rubescens - Bilyu, Taroko gorge, IDS in Taiwan - 2012.1112 097



Acer rubescens (PdS,Taipangshan,Taiwan,1800m) - 16171-wld-476 - 2016.0702 195



Acer rubescens (Mt. Chushan, Taiwan) - 99018-wld-476 - 2005.1005 043



Acer rubescens (Taiwan, 2420m) - 04340-wld-pON - 1 mai 05 - 009



Acer rubescens (Tianluanshan, Taiwan, 2420m) - 04340-wld-461 - 8 Oct 05 032



Acer rubescens (Taiwan, Tianluanshan 2420m) - 04340-wld-461 - 2006.1210



Acer davidii - Shashung river, Danba, Sichuan 2500m, 2009.0701 75-



Acer davidii - Shashung river, Danba, Sichuan 2500m, 2009.0701 75-



Acer davidii - Langdu valley, Hongshan, N. Yunn., deciduous forest - 2008.0701 058



Acer davidii - Langdu valley, Hongshan, N. Yunn., deciduous forest - 2008.0701 058



Acer davidii - Langdu valley, Hongshan, N. Yunn., deciduous forest - 2008.0701 058



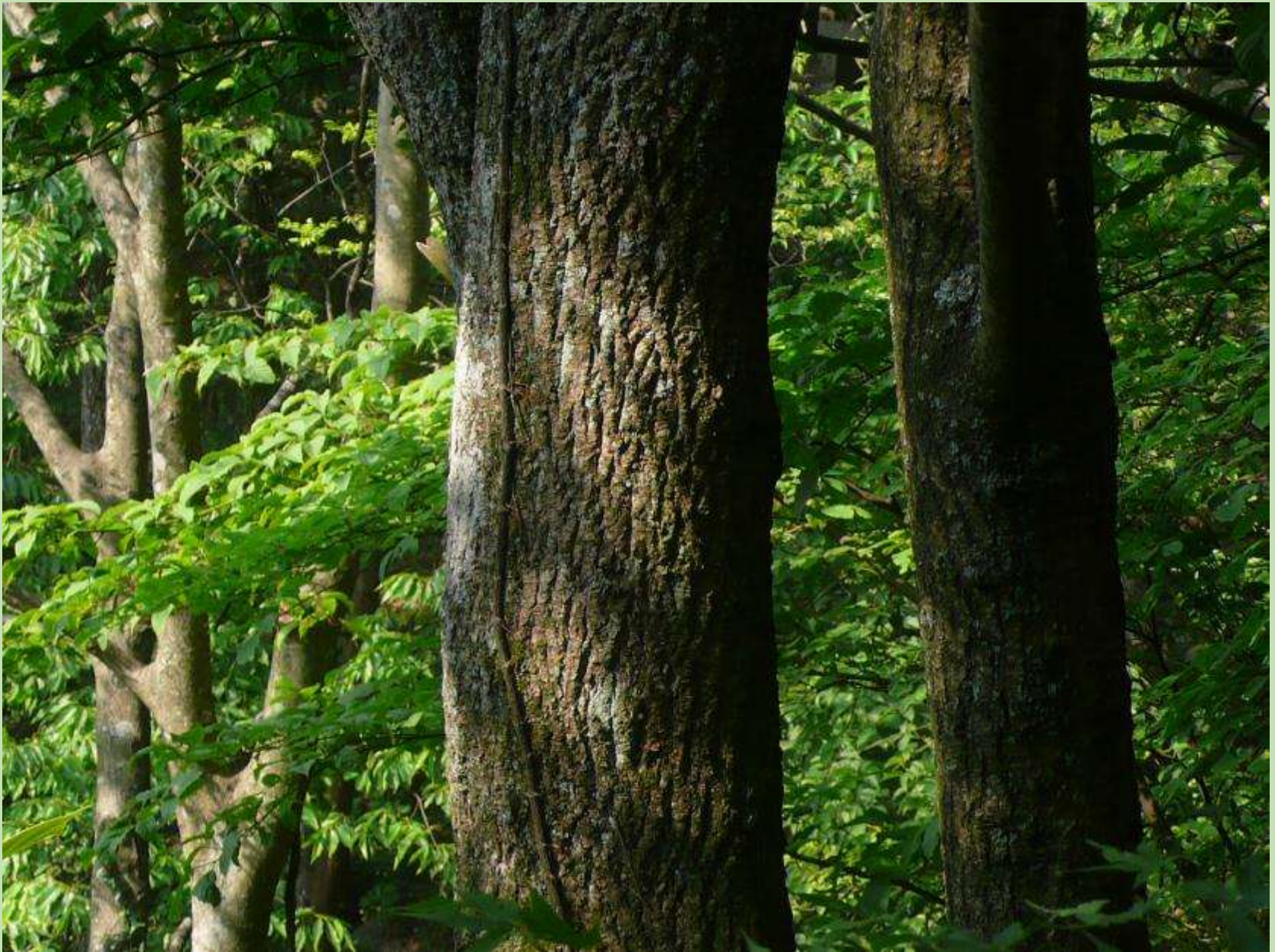
Acer davidii - 3 waterfall path, Lushan, Jiangsi, China - 2007.0331 081



Acer davidii - 3 waterfall path, Lushan, Jiangsi, China - 2007.0331 081



Acer davidii - 3 waterfall path, Lushan, Jiangsi, China - 2007.0331 081



Acer davidii (Bark) - Lushan, Immortal's Cavern Path - 2009.0511 175



'Ernest Wilson'
'Karmen'

Acer davidii
'Rosalie' -
86193-esv- 55

Acer davidii
'Serpentine' -
83454-esv- 60

Acer davidii -
83453-esv- 55



Acer davidii 'Ernest Wilson' _ 'Rosalie' _ 'Karmen' 24 sep 2005 023



Acer davidii 'George Forrest' - Westonbirt - 6 Jun 1990 - PdSS.0459



Acer davidii subsp. *grosseri* - Park Wood, Hergest Croft.1239 - 2010.1017 011



Acer metcalfii (Coombes 862, Hunan, China, 1200m) - 08080- 2010.0623



Acer metcalfii (Coombes 862, Hunan, China, 1200m) - 08080- 2010.0623



Acer metcalfii (Coombes 862, Hunan, China, 1200m) - 08080- 2010.0623



Acer davidii (hybrid) - 92411-waa-147 - 2013.1201 061



Acer davidii (hybrid) - 92411-waa-147 - 2013.1201 061



Acer davidii (hybrid) - 92411-waa-147 - 2013.1201 061



Acer davidii 'Spinners' (probably hybrid) - 92168-spi-113 - 2010.1103 104



Acer davidii 'Spinners' (probably hybrid) - 92168-spi-113 - 2010.1103 104



Acer capillipes - 68004-vpl- 9 – Herkenrode 2006.1111



Acer capillipes - 68004-vpl- 9 – Herkenrode 2006.1111



Acer capillipes - 68004-vpl- 9 – Herkenrode 2006.1111



Acer capillipes - Norikura Mt.- 1350m – IDS in Japan 2008.1015 091



Acer capillipes - Norikura Mt.- 1350m – IDS in Japan 2008.1015 091



Acer sieboldianum - 1350m nr. Norikura Mountain – IDS in Japan2008.1015 048



Acer sieboldianum - 1350m nr. Norikura Mountain – IDS in Japan2008.1015 048



Acer morifolium Yugawa9974 – UBC Botanical Garden, Vancouver_014



Acer morifolium Yugawa9974 – UBC Botanical Garden, Vancouver_014



Acer morifolium Yugawa9974 – UBC Botanical Garden, Vancouver_014



Acer morifolium – AW 12047-esv-118 - 2016.0702 147



Acer morifolium – AW 12047-esv-118 - 2016.0702 147



Acer morifolium (TaenGun, Korea) - 06176-wld- 84 - 2016.0702 063



Acer morifolium (TaenGun, Korea) - 06176-wld- 84 - 2016.0702 063



Acer micranthum vs. Acer tschonoskii - AW 2005



Acer micranthum (left) versus *A. tschonoskii* - 2007.0923 - 053



Acer micranthum – Kamikochi, IDS in Japan - 2008.1015 013



Acer micranthum – Kamikochi, IDS in Japan - 2008.1015 013



Acer micranthum – Kamikochi, IDS in Japan - 2008.1015 013



Acer micranthum - Goshiki-numa Trail to Lake Hibara, Hokkaido, IDS in Japan - 26 Oct 1992



Acer micranthum - Goshiki-numa Trail to Lake Hibara, Hokkaido, IDS in Japan - 26 Oct 1992



Acer micranthum – AW 84106-esv- 61 - 2006.1115 074



Acer micranthum – AW 8236A-div- 41 - 2007.0515 - 032



Acer micranthum – AW 8236A-div- 41 - 2007.0515 - 032



Acer micranthum (PdS, Bijodaira, Takayama, Japan,900m) – AW 12235 - 2014.0523



Acer tschonoskii - 89078-waa- 54 - 2013.0528 019



Acer tschonoskii - 89078-waa- 54 - 2013.0528 019



Acer tschonoskii - Azumakofugi , Honshu, IDS in Japan- 2008.1007 059



Acer tschonoskii - Azumakofugi IDS in Japan - 2008.1007



Acer tschonoskii - Azumakofugi - 2008.1007 116



Acer tschonoskii - Azumakofugi - 2008.1007 116



Acer tschonoskii var. *australe* - Azumakofugi - 2008.1007 109 (herb at AW)



Acer tschonoskii in Japan – October 2008



Acer tschonoskii var *australe* in Japan - Oct 2008



Acer tschonoskii subsp. *koreanum* NEKG 110 (Taebek San) - 91244-wld- 62 - 2006.1025 225



Acer tschonoskii subsp. *koreanum* NEKG 110 (Taebek San) - 91244-wld- 62 - 2006.1025 225



Acer tschonoskii subsp. *koreanum* NEKG 110 (Taebek San) - 91244-wld- 62 - 2006.1025 225



Acer tschonoskii subsp. *koreanum* NEKG 110 (Taebek San) - 91244-wld- 62 - 2006.1025 225



Acer rufinerve, *A. micranthum* - Mt Azuma region, IDS in Japan - 28 Oct 92



Acer rufinerve - Bijodaira, Takayama, IDS in Taiwan - 2008.1016 029



Acer rufinerve 'Hatsuyuki' -



Acer rufinerve 'Hatsuyuki' -

Acer rufinerve (PdS, Bijodaira
, Takayama, Japan, 900m) - 12231-wld- 65

Acer tegmentosum - 86220-esv- 54



Acer rufinerve 'Hatsuyuki' -



Acer rufinerve 'Winter Gold' - 01263-bul-113 - 2012.1004 140



Acer rufinerve 'Winter Gold' - 01263-bul-113 - 2012.1004 140



Acer tegmentosum (left 5 lobes) versus *A. pensylvanicum* (3 lobes)



Acer tegmentosum – AW 86220-esv- 54 - 2016.0702026



Acer tegmentosum – AW 86220-esv- 54 - 2016.0702026



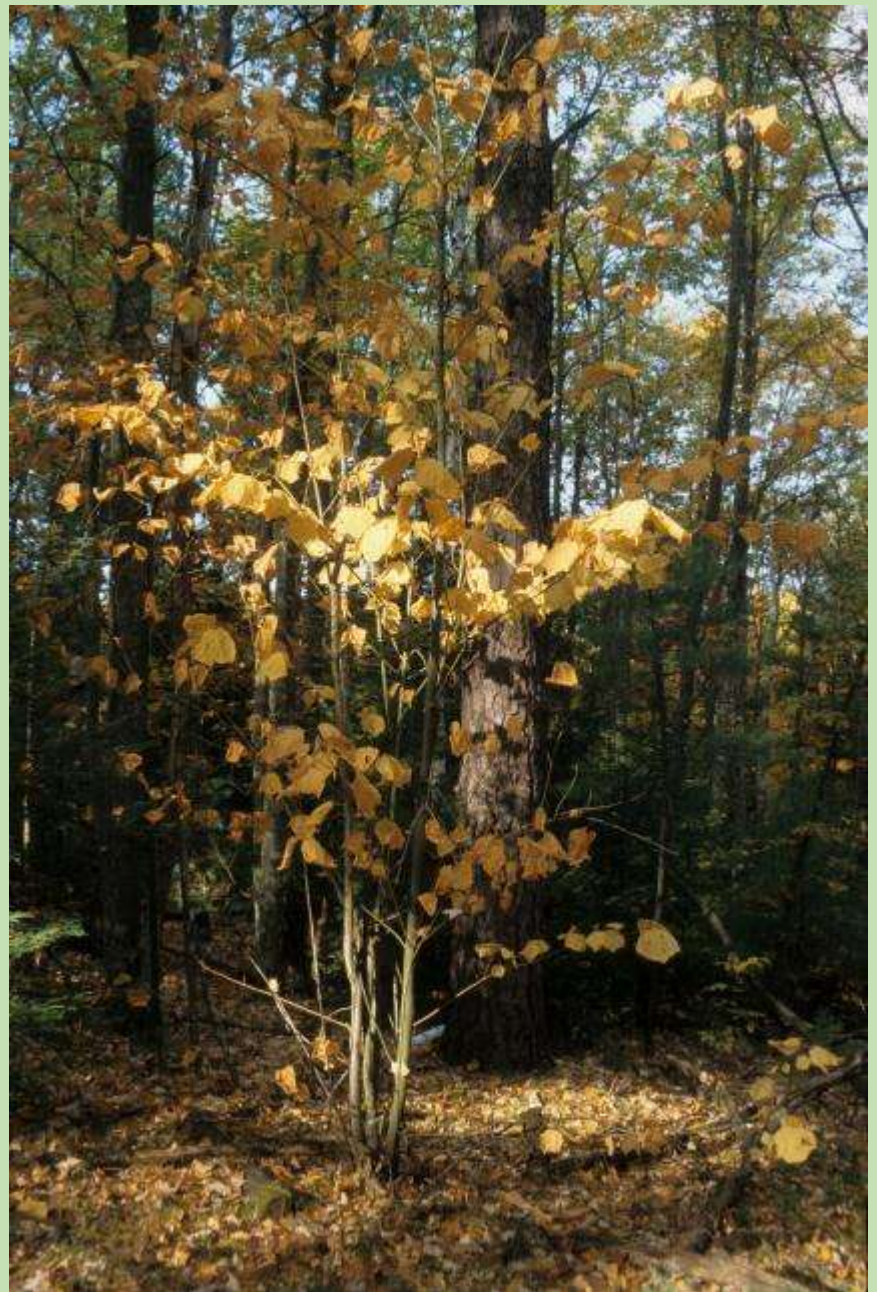
Acer tegmentosum – AW 86220-esv- 54 - 2016.0702026



Acer tegmentosum (Changbai Shan) – AW 02122-wld-120 - 2010.1003 062



Acer pensylvanicum - Panthertown, Jackson co, N.C. - 2013.1015 106



Acer pensylvanicum - Panthertown, Jackson co, N.C. - 2013.1015 106



Acer pensylvanicum (Shenandoah N.P.,VA,800m) - 03103-wld-120 -



Acer pensylvanicum (Shenandoah,VA,USA,800m) - 04326-wld-415 - 2010.1101 020

PECTINATUM group:

unlobed: => **laxiflorum**

3-lobed:

terminal lobe long, lateral lobes low, margin double serrate:

=> **forrestii**

terminal lobe to ½ of limb, lateral lobes around middle, margin

finely serrate: =>..... **taronense**

5-lobed:

terminal lobe shorter, margin finely serrate: => **pectinatum**

terminal lobe longer, margin coarsely serrate: => **maximowiczii**



Acer pectinatum subsp. *forrestii* - Zibenshan,
Yunnan - 2007.0409 164

Acer pectinatum subsp.
laxiflorum
(KC#59, Sichuan, 2100m)
10207-wld-113 -

Acer crataegifolium
(Lake Hibara, Mt. Azuma)
- 94311-wld-112 -



Acer pectinatum subsp. *laxiflorum* VS. *Acer crataegifolium* - 2016.0702 085



Acer pectinatum subsp. *laxiflorum* - Wolong, to Balang shan - 2009.0624 038



Acer pectinatum subsp. *laxiflorum* - Hergest.2912 - May 1991 - PdS.0663



Acer pectinatum subsp. *laxiflorum* 'Alice' - 01256-bul-113 – (not subsp. *forrestii*)



Acer pectinatum subsp. *forrestii* SICH.1461 –
UBG BC, Vancouver - 2004.0804 – (“very typical” sic)



Acer pectinatum subsp. *forrestii* SEH.68 - 035480-0166-2000 - UBG BC - Vancouver



Acer pectinatum subsp. *forrestii* – from Daju to Zongdian, Yunnan - 2008.0624 048



Acer pectinatum subsp. *forrestii* – from Daju to Zongdian, Yunnan - 2008.0624 048



Acer pectinatum subsp. *forrestii* – from Daju to Zongdian, Yunnan - 2008.0624 048



Acer pectinatum subsp. *forrestii* – from Daju to Zongdian, Yunnan - 2008.0624 048



Acer pectinatum subsp. *taronense* - Datang, Tengchong, Yunn. - 2014.0608 006



Acer pectinatum subsp. *taronense* - Datang, Tengchong, Yunn. - 2014.0608 006



Acer pectinatum subsp. *taronense* - Datang, Tengchong, Yunn. - 2014.0608 006



Acer pectinatum subsp. *taronense* - Datang, Tengchong, Yunn. - 2014.0608 006



Acer chienii or *pectinatum* subsp. *taronense* - Datang, N. of Tengchong, Yunn. - 2014.0608



Acer chienii or *pectinatum* subsp. *taronense* - Datang, N. of Tengchong, Yunn. - 2014.0608



Acer pectinatum subsp. *pectinatum* aff. - 91623-waa-176 -



Acer pectinatum subsp. *pectinatum* aff. - 91623-waa-176 -



Acer pectinatum subsp. *maximowiczii* aff. –
Danyun Gorge, Huanglong , N. Sich. 2009.0708 020

Section Palmata (Sinensia)

tutcheri

calcaratum

tonkinense

erianthum

campbellii Group :

3-lobed, largely rounded : **wilsonii**

5-lobed

slender petiole and small leaf: **oliverianum**

slender petiole and big leaf: **elegantulum**

terminal lobe short, stout short petiole:..... **sinense**

5-7 lobed:..... **campbellii (+ flabellatum)**



Acer tutcheri aff. - Nankunshan, Guangzhou, China - 2009.0508 034



Acer tutcheri aff. - Nankunshan, Guangzhou, China - 2009.0508 034



Acer tutcheri aff. - Nankunshan, Guangzhou, China - 2009.0508 034



Acer tutcheri aff. - Nankunshan, Guangzhou, China - 2009.0508 034



Acer calcaratum – AW 05187-waa-169 - 2009.0522 109



Acer calcaratum – AW 05187-waa-169 - 2009.0522 109



Acer calcaratum – AW 15220-ver-162 - 2016.0702 285



Acer erianthum - 94159-mal- S - 2002.0604 - PdS.0509



Acer erianthum - 94159-mal- S - 2002.0604 - PdS.0509



Acer erianthum - 94159-mal- S - 2002.0604 - PdS.0509



Acer erianthum - 94159-mal- S - 2002.0604 - PdS.0509



Acer campbellii subsp. *wilsonii* - Westonbirt - 1990.0606 - PdS.2848



Acer campbellii subsp. *wilsonii* – Hof ter Saksen, Beveren - 2007.1005 - 168



Acer campbellii subsp. *wilsonii* – Hof ter Saksen, Beveren - 2007.1005 - 168



Acer campbellii subsp. *wilsonii* - 83032-hil- 62 - 1989.0505



Acer oliverianum - Westonbirt - 2009.0904 033



Acer oliverianum - Hergest Croft – 26 Oct 2003



Acer oliverianum subsp. *formosanum* ETOT.064 - 30853-049-93 - UBC BG - 30 Sep 05



Acer oliverianum subsp. *formosanum* (Syuan, Taiwan, 1840m) - 10161-wld-155 - 2012.1122 066



Acer oliverianum subsp. *formosanum* (Syuan, Taiwan, 1840m) - 10161-wld-155 - 2012.1122 066



Acer oliverianum subsp. *formosanum* (Syuan, Taiwan, 1840m) - 10161-wld-155 - 2012.1122 066



Acer elegantulum – AW 06230-div-163 - 2015.1006 158



Acer elegantulum – AW 06230-div-163 - 2015.1006 158



Acer elegantulum – AW 06230-div-163 - 2015.1006 158



Acer elegantulum (Foster 0614,Hunan,CN) - 12253-div-162 - 2011.0915 071



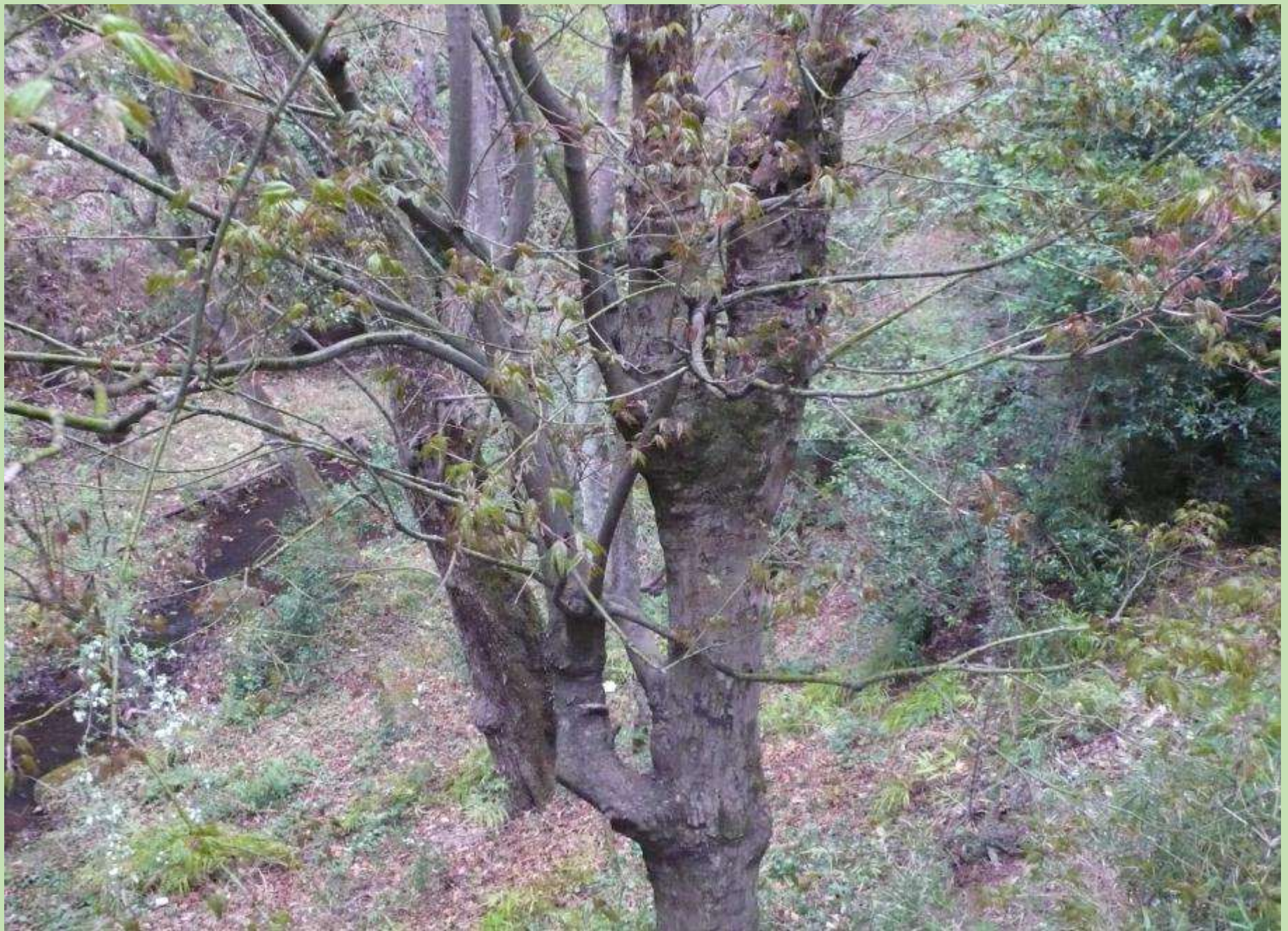
Acer elegantulum (Foster 0614,Hunan,CN) - 12253-div-162 - 2011.0915 071



Acer elegantulum (Foster 0614,Hunan,CN)
- 12253-div-162 -

Acer elegantulum - 06230-div-163 - (from Zundert nurseries)
(came in as *tutcheri*, possibly *oliverianum* said Peter Wharton)

Acer elegantulum (Foster 0614,Hunan,CN) - 12253-div-162 - 2011.0915 071



Acer campbellii subsp. *sinense* - Shibao Mt. JianChuan, Yun. - 2007.0406 157



Acer campbellii subsp. *sinense* - Shibao Mt. JianChuan, Yun. - 2007.0406 157



Acer campbellii subsp. *sinense* - Zibenshan, Yunnan - 2007.0409 111



Acer campbellii - 3 Waterfall path, Lushan, Jiangsi, Central China - 2009.0511 042



Acer campbellii - 3 Waterfall path, Lushan, Jiangsi, Central China - 2009.0511 042



Acer campbellii - 3 Waterfall path, Lushan, Jiangsi, Central China - 2009.0511 042



Acer campbellii subsp. *flabellatum* - UBC BG 020549-0013-1982 - Vancouver - 2 Oct 05 044



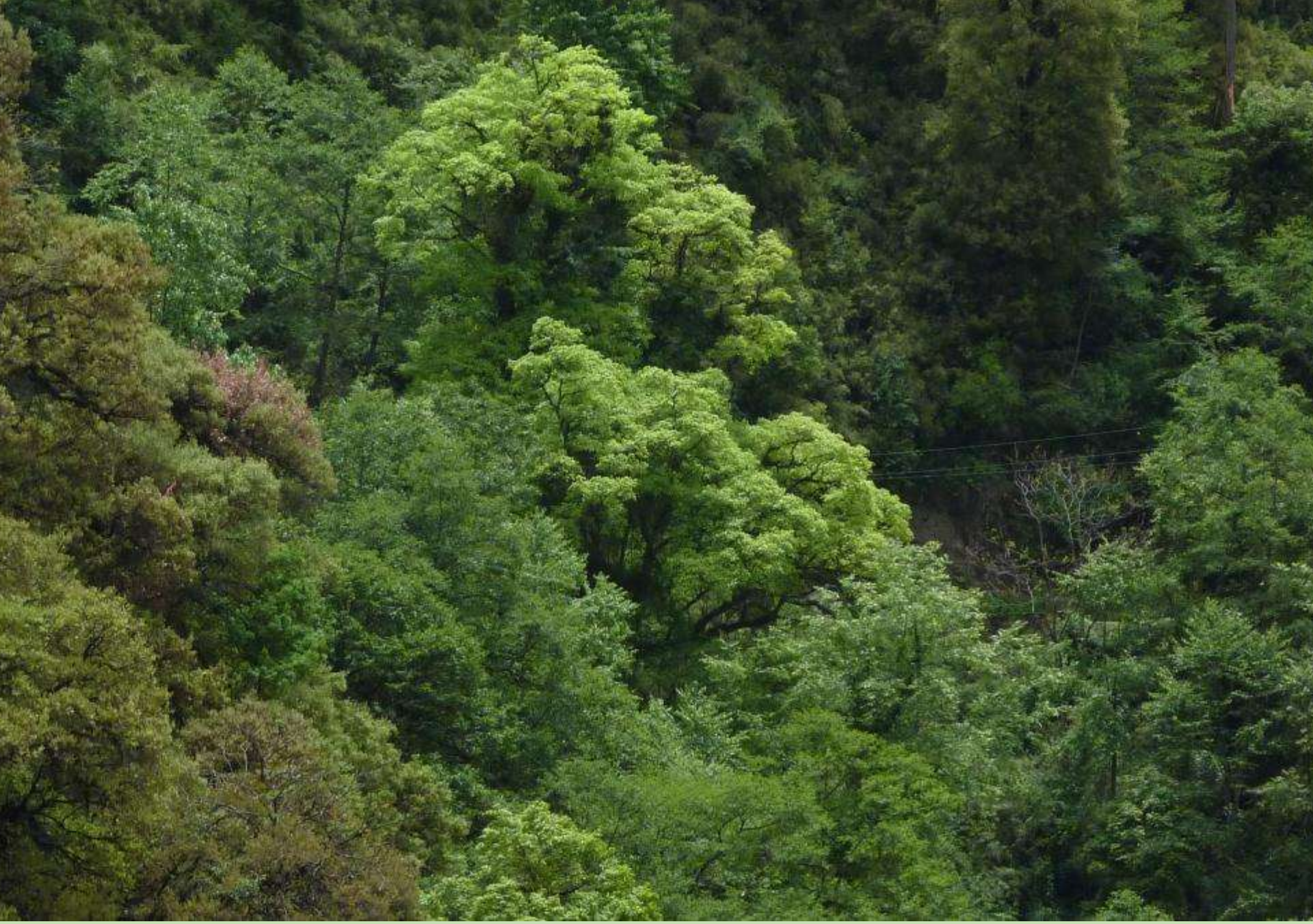
Acer campbellii subsp. *flabellatum* - UBC BG 020549-0013-1982 - Vancouver - 2 Oct 05 044



Acer campbellii subsp. *flabellatum* - UBC BG 020549-0013-1982 - Vancouver - 2 Oct 05 044



Acer campbellii
subsp. *flabellatum*
MF.2050 Yunnan –
Hergest Croft. 5093
- 14 Sep 2001



Acer campbellii subsp. *campbellii* - Bansoi bridge on Teesta river, 2500m, N. Sikkim - 2010.0509



Acer campbellii subsp. *campbellii* - Bansoi bridge on Teesta river, 2500m, N. Sikkim - 2010.0509



Acer campbellii subsp. *campbellii* - Bansoi bridge on Teesta river, 2500m, N. Sikkim - 2010.0509