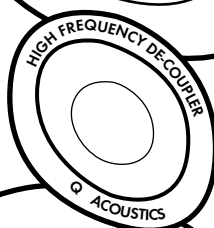




3000 SERIES

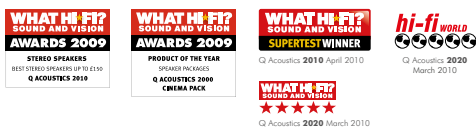


BEAUTIFULLY
ENGINEERED
SOUND

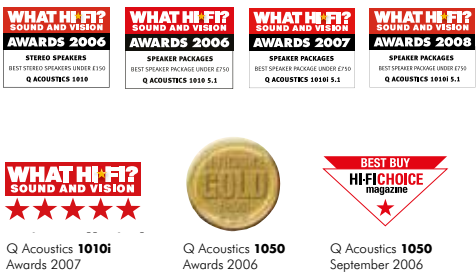
The 2000i series awards



The 2000 series awards



The 1000 series awards



**Q Acoustics is not like other
loudspeaker companies.**

Q Acoustics is a young brand.

No heritage. No tradition.

No fading black and white photographs.

That's the secret of our success.

**"It's amazing what Q Acoustics has
accomplished in eight years."**

What Hi-Fi? Sound & Vision, May 2014

We're very proud to confirm that Q Acoustics' design team have done it again! We tasked them to design a completely new range of loudspeakers that would better their previous achievements – the hugely successful and highly acclaimed '2000i' Series.

The goal was to 'raise the bar' still further and once again set new performance standards for affordable loudspeakers.

The results very clearly speak for themselves.

A fusion of both evolutionary and revolutionary thinking, the new range benefits from state-of-the-art design technology, as well as improvements to the cabinet construction derived from our ground breaking 'Concept' models.

An example is the new, bespoke, 3000 Series, '2 in 1', Concentric Ring Dome tweeter. It achieves its astounding sonic performance: ultra-low distortion and wide dispersion, by combining the best properties of both 'Ring radiator' and 'Dome' type tweeter designs.

Beautiful to behold, and available in five attractive finishes, the new Q Acoustics 3000 Series are simply astonishingly good loudspeakers.



3010 **Compact Bookshelf / Standmount Speaker**

This 'Ultra Compact' bookshelf speaker sets new standards for sonic performance in its class. It's all new. New 3000 Series, '2 in 1' Concentric Ring Dome tweeter, new Aramid Fibre/Paper cones for the 100mm bass unit, uprated 'audiophile' crossover components and stronger, lower resonance cabinet.

All these factors combine to make a make an affordable, small loudspeaker of unparalleled quality and value.

The new 3010 is suitable for both hi-fi music and home cinema use and is an ideal match for the 3090C centre speaker and 3070S subwoofer.

The 3010 can also be stand or wall mounted, using the dedicated 3000ST stand or 3000WB wall bracket.



3020 **Bookshelf / Standmount Speaker**

Like its smaller sibling, the medium sized 3020 bookshelf model benefits from the advanced, low distortion, wide dispersion, new 3000 Series Concentric Ring Dome tweeter; uprated 'audiophile' crossover and improved low resonance cabinet. In addition, it boasts a larger 125mm drive unit, with the new Aramid Fibre/Paper cone material. This larger driver delivers an extended bass response with fast dynamics, wonderfully open, realistic midrange and an extraordinary 'being there' three dimensional soundstage.

The new 3020 is the natural choice for music lovers who want to experience 'full performance', superb quality sound in small and medium sized rooms.

The 3000ST or 3000WB allow the 3020 to be stand or wall mounted.





3050 Floorstanding Speaker

Visually striking in five beautiful finishes; including Lacquered Gloss Black, Lacquered Gloss White and 'Leather effect', the perfectly proportioned 3050 is the flagship of the new 3000 Series. Improved twin 165mm Aramid Fibre/Paper cone drivers deliver exceptional bass extension and midrange openness, whilst the new '2 in 1', Concentric Ring Dome tweeter adds astonishingly clear and smooth high frequencies. Performance is further enhanced, both sonically and aesthetically, by its integral steel 'outrigger' plinth with floor spikes.

The flagship 3050 is the perfect loudspeaker for larger rooms. It boasts the ultra-low levels of distortion, typically found of speakers costing three or four times its price. Not surprisingly, as a result it delivers truly unrivalled sound quality and value.



3070S **Subwoofer**

This powerful, 140watts rms, twin 170mm drive unit subwoofer will bring the full explosive majesty of blockbuster movie soundtracks into your living room.

Naturally, being a Q Acoustics design, it will also accurately reproduce the fast 'twang' and detail of a double bass or any other low frequency musical notes. That's why Q Acoustics is your best choice for both music and movies.



3090C **Centre Channel Speaker**

A centre channel speaker with two of the new 100mm, Aramid Fibre/Paper cone bass drivers, and the new 3000 Series wide dispersion, '2 in 1', Concentric Ring Dome high frequency unit. The 3090C acoustically matches and complements any of the 3000 Series models.

Removable rear port bungs means it can deliver its outstanding, seamless performance whether it is bookshelf, stand mounted or wall mounted by using the dedicated 3000WB wall bracket.



3000 **Series 5.1 Cinema Pack**

Perfect for every occasion, the new 3000 Series 5.1 Cinema Pack will unleash the full potential of your home cinema electronics.

Its exquisitely detailed sound will convey all the atmosphere, natural dialogue and, when required, the full bodied explosive drama of every movie soundtrack.

But of course, being Q Acoustics loudspeakers, they don't just deliver fantastic home cinema sound. Every new 3000 Series model is also an outstanding, genuine hi-fi loudspeaker. So the 3000 home cinema pack is also your best choice if you want to enjoy wonderful stereo musical performances.



3000ST **Speaker Stand**

The 3000ST speaker stand is designed specifically for the 3010 and 3020 loudspeakers. Precision laser-cut steel construction and acoustic wadding inserts ensure quality and performance to complement the loudspeakers.

Features:

- Integral cable management
- Acoustic wadding inserts within columns
- Textured satin finish
- Top plates for the 3010 and 3020 loudspeakers included

Colours available:

Black or White



3000WB **Wall Bracket**

The 3000WB Wall Bracket is a unique 'Tilt and Turn' loudspeaker bracket. It's adjusted via a single Allen bolt and allows the 3010, 3020 and 3090C models to be mounted almost flat to the wall or angled down and/or sideways.

For a perfect visual finish, each bracket comes complete with both black and white bottom covers. It's simple to use, offers flexible positioning and looks great.

Features:

- 'Tilt and Turn' loudspeaker bracket
- Mount speakers almost flat to the wall or angled down and/or sideways

Technical Specifications

| | | | | |
|---------------------------------------|---|---|--|---|
| |  |  |  |  |
| Passive Loudspeakers | 3010 | 3020 | 3050 | 3090C |
| Enclosure type: | 2-way reflex | 2-way reflex | 2-way reflex | 2-way reflex |
| Bass unit (mm): | 100 mm | 125 mm | 2 x 165 mm | 2 x 100 mm |
| Treble unit (mm): | 25 mm | 25 mm | 25 mm | 25 mm |
| Frequency response (+/-3dB): | 68 Hz - 22 kHz | 64 Hz - 22 kHz | 44 Hz - 22 kHz | 75 Hz - 22 kHz |
| Nominal impedance: | 6 Ω | 6 Ω | 6 Ω | 6 Ω |
| Sensitivity (2.83v@1m): | 86dB | 88dB | 92dB | 89dB |
| Recommended amplifier power: | 15 - 75W | 25 - 75W | 25 - 100W | 25 - 100W |
| Crossover frequency: | 2.8 kHz | 2.9 kHz | 2.6 kHz | 2.7 kHz |
| Effective volume: | 3.8 litres | 5.9 litres | 35.6 litres | 10.3 litres |
| Cabinet dimensions (WxHxD mm): | 150 x 235 x 200 | 170 x 260 x 226 | 200 x 1000 x 298 | 430 x 150 x 200 |
| Weight (per cabinet): | 3.6 Kg | 4.6 Kg | 17.8 Kg | 6.0 Kg |

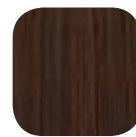
| | |
|---------------------------------------|---|
| |  |
| Active Subwoofer | 3070S |
| Enclosure type: | Ported |
| Bass unit (mm): | 2 x 170 mm long throw |
| Amplifier power: | 140W rms |
| Crossover frequency: | 50 Hz - 150 Hz (var.) |
| Cabinet dimensions (WxHxD mm): | 200 x 400 x 425 |
| Weight: | 13.6 Kg |

3000 series finishes

The appearance of the 3000 Series makes a striking design statement. As well as traditional 'Matte Graphite' and 'American Walnut' finishes; for a small extra cost, the 3000 models are available in beautiful 'Lacquered Gloss Black', 'Lacquered Gloss White' and 'Leather effect' finish.



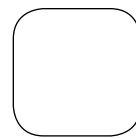
Matte Graphite



American Walnut



Leather Effect



White Lacquer



Black Lacquer

armourHOME

Armour Home Electronics
Stortford Hall Industrial Park
Dunmow Road
Bishop's Stortford
Hertfordshire CM23 5GZ

Tel: +44 (0)1279 501111
Fax: +44 (0)1279 501080
www.armourhome.co.uk
info@armourhome.co.uk

www.QAcoustics.co.uk

AHE2059 // ZB0244

Our policy is one of continuous product improvement, we reserve the right to change the designs and specifications without notice. All information is given in good faith. The manufacturer accepts no responsibility for errors, omissions or incorrect assumptions. Armour Home Electronics 2015. E&OE.