

KITCHEN RETAIL

PRODUCT SPECIFICATIONS

2014



perfekt in form und funktion

Contents

Cooking

Ovens	4
MaxiKlasse™	4
Pyroluxe®	5
ProCombi	6
Built-In Double Ovens	7
Built-Under Double Ovens	8
Freestanding Cookers	9

Hobs

MaxiSight® Induction	10
MaxiSense® Induction	11
CrystalLine	13
Ceramic	15
Gas	17

Hoods

Designer Hoods	21
Standard	25

Compact Range

Ovens	26
Coffee Machine	27
Combination Microwaves	28
Warming Drawers	29
Microwaves	30

Cleaning

Integrated Dishwashers	32
Freestanding Dishwashers	34

Cooling

Wine	36
PerfektFit™ and Side by Side	37
Freestanding	38
Fridge Freezers	38
Cabinet Fridges and Freezers	40
Undercounter Fridges and Freezers	41
Built-In	42
Fridge Freezers	42
Fridges and Freezers	44

Laundry

Built-In	50
Washing Machines	50
Washer Dryers	51
Freestanding	52
Washing Machines	52
Dryers	54
Washer Dryers	56



Overviews



BE5304001M



BE3003001M



BY9314001M



BP8314001M

Oven Features	BE5304001M	BE3003001M	BY9314001M	BP8314001M
Control Type	Retractable rotary	Retractable rotary	Navigational Touch	Electronic Touch
Illuminated controls	•			
Menu guided cooking			•	•
Oven capacity (usable)	74	74	58	74
Number of functions	8	8	14	10
Fast heat up	•	•	•	•
SoftMotion™ soft close door	•		•	•
ProFrame™			•	•
Fully programmable timer	•	•	•	•
Core temperature sensor	•	•	•	•
Floodlight™	•	•	•	•
Sidelight	•		•	•
Cleaning	Diamond glazed enamel	Diamond glazed enamel	Pyrolytic	Pyrolytic
Oven door glazing	Triple	Triple	Quadruple	Quadruple
Cooling fan	•	•	•	•
Accessories				
Number of shelves	2 antistick	2 antistick	2 antistick	2 antistick
Telescopic runners			•	•
MaxiTray™			•	•
Full width grill / meat pan (with trivet)	•	•	•	•
Perforated baking trays				
Patisserie tray				
Dimensions				
Appliance dimensions				
Height (mm)	594	594	594	594
Width (mm)	594	594	594	594
Depth (mm)	567	567	567	567
Aperture dimensions				
Height (mm)	590	590	590	590
Width (mm)	560	560	560	560
Depth (mm)	550	550	550	550
Performance				
Oven temperature range (°C)	30 - 300	50 - 275	30 - 300	30 - 300
Energy efficiency class	A-10%	A-20%	A-20%	A-20%
Energy efficiency class in mode static/fan	Fan	Fan	Fan	Fan
Energy consumption fan (kWh)	0.89	0.79	0.79	0.79
Cook time standard load fan (min)	47	47	42	43
Energy consumption static (kWh)	0.99	0.89	0.87	0.89
Cook time standard load fan (min)	51	51	47	51
Largest baking sheet surface area (cm²)	1418	1418	1188	1424
Connected load (kW)	3.5	3.5	3.5	3.7
Fuse rating (A)	16	16	16	16
Oven/grill power (max kW)	3.5 / 3.1	3.5 / 3.1	3.5 / 2.9	3.7 / 2.3
Steam power output (steam only kW)				

Overviews



BP7304001M BP5014301M BP5304001M BP3003001M BP8715001M BP8615001M

Oven Features						
Control Type	Electronic Touch	Electronic Touch	Retractable rotary	Retractable rotary	Electronic Touch	Electronic Touch
Illuminated controls			•			
Menu guided cooking	•	•			•	•
Oven capacity (usable)	74	74	74	74	60	60
Number of functions	10	10	8	8	10	10
Fast heat up	•	•	•		•	•
SoftMotion™ soft close door	•	•	•		No, side opening door	No, side opening door
ProFrame™	•	•			•	•
Fully programmable timer	•	•	•	•	•	•
Core temperature sensor	•	•	•		•	•
Floodlight™	•	•	•	•	•	•
Sidelight	•	•	•		•	•
Cleaning	Pyrolytic	Pyrolytic	Pyrolytic	Pyrolytic	Pyrolytic	Pyrolytic
Oven door glazing	Quadruple	Quadruple	Quadruple	Quadruple	Quadruple	Quadruple
Cooling fan	•	•	•	•	•	•
Accessories						
Number of shelves	2 antistick	2 antistick	2 antistick	2 antistick	2 chrome	2 chrome
Telescopic runners					•	•
MaxiTray™	•	•			•	•
Full width grill / meat pan (with trivet)	•	•	•	•	•	•
Perforated baking trays						
Patisserie tray						
Dimensions						
Appliance dimensions						
Height (mm)	594	594	594	594	590	590
Width (mm)	594	594	594	594	594	594
Depth (mm)	567	567	567	567	560	560
Aperture dimensions						
Height (mm)	590	590	590	590	593	593
Width (mm)	560	560	560	560	560	560
Depth (mm)	550	550	550	550	550	550
Performance						
Oven temperature range (°C)	30 - 300	30 - 300	30 - 300	30 - 300	30 - 250	30 - 250
Energy efficiency class	A-20%	A-20%	A-20%	A-20%	A	A
Energy efficiency class in mode static/fan	Fan	Fan	Fan	Fan	Fan	Fan
Energy consumption fan (kWh)	0.79	0.79	0.79	0.79	0.78	0.78
Cook time standard load fan (min)	43	43	43	43	41	41
Energy consumption static (kWh)	0.89	0.89	0.89	0.89	0.79	0.79
Cook time standard load fan (min)	51	51	51	51	43	43
Largest baking sheet surface area (cm ²)	1424	1424	1418	1418	1130	1130
Connected load (kW)	3.5	3.5	3.5	3.5	2.54	2.54
Fuse rating (A)	16	16	16	16	13	13
Oven/grill power (max kW)	3.5 / 2.3	3.5 / 2.3	3.5 / 2.3	3.5 / 2.3	2.54 / 2.45	2.54 / 2.45
Steam power output (steam only kW)						

Overviews



BS9314001M

BS8314001M

BS7304001M

Oven Features	BS9314001M	BS8314001M	BS7304001M
Control Type	Navigational Touch	Electronic Touch	Electronic Touch
Illuminated controls			
Menu guided cooking	•	•	•
Oven capacity (usable)	74	73	74
Number of functions	17	17	14
Fast heat up	•	•	•
SoftMotion™ soft close door	•	•	•
ProFrame™	•	•	•
Fully programmable timer	•	•	•
Core temperature sensor	•	•	•
Floodlight™	•	•	•
Sidelight	•	•	•
Cleaning	Steam cleaning	Steam cleaning	Steam cleaning
Oven door glazing	Quadruple	Quadruple	Quadruple
Cooling fan	•	•	•
Accessories			
Number of shelves	2 stainless steel	2 stainless steel	2 stainless steel
Telescopic runners	•	•	•
MaxiTray™	•	•	•
Full width grill / meat pan (with trivet)	•	•	•
Perforated baking trays	•	•	•
Patisserie tray	•	•	•
Dimensions			
Appliance dimensions			
Height (mm)	594	594	594
Width (mm)	594	594	594
Depth (mm)	567	567	567
Aperture dimensions			
Height (mm)	590	590	590
Width (mm)	560	560	560
Depth (mm)	550	550	550
Performance			
Oven temperature range (°C)	30 - 230	30 - 230	30 - 230
Energy efficiency class	A-20%	A-20%	A-10%
Energy efficiency class in mode static/fan	Fan	Fan	Fan
Energy consumption fan (kWh)	0.89	0.89	0.89
Cook time standard load fan (min)	45	45	45
Energy consumption static (kWh)	0.99	0.99	0.99
Cook time standard load fan (min)	53	53	53
Largest baking sheet surface area (cm ²)	1424	1424	1424
Connected load (kW)	3.5	3.5	3.5
Fuse rating (A)	16A	16A	16A
Oven/grill power (max kW)	3.5 / 2.3	3.5 / 2.3	3.5 / 2.3
Steam power output (steam only kW)	1.3	1.3	1.3

- Energy efficiency class based on a scale of A (most efficient) to G (least efficient).
 - Please refer to the user instructions before cutting out.

Overviews



DC7003000M

DC4003000M

DE4003000M

Oven Features	DC7003000M	DC4003000M	DE4003000M
T = Top / B = Bottom	T / B	T / B	T / B
Control Type	Electronic touch	Retractable rotary	Retractable rotary
Oven capacity (usable)	43 / 68	43 / 68	43 / 68
Number of cooking functions	8 _ 10	5 _ 8	5 _ 2
Fully programmable timer)	Main oven	Main oven	Main oven
Cleaning	Catalytic	Catalytic	Diamond glazed enamel
Oven doors glazing	Triple	Double	Double
Lights	1 x side / 1 x back	1 x back	1 x back
Cooling fan	•	•	•
Accessories			
Number of shelves	1 _ 2	1 _ 2	1 _ 2
Full width grill / meat pan (with trivet)	•	•	•
Dimensions			
Appliance dimensions			
Height (mm)	888	888	888
Width (mm)	594	594	594
Depth (mm)	548	548	548
Aperture dimensions			
Height (mm)	875	875	875
Width (mm)	560	560	560
Depth (mm)	550	550	550
Performance			
Energy efficiency class	A / A	A / A	A / A
Energy efficiency class in mode static/fan	Fan / Fan	Static / Fan	Static / Fan
Energy consumption fan (kWh)	0.79 / 0.82	N/A / 0.82	N/A / 0.82
Cook time standard load fan (min)	49 / 49	NA / 44	NA / 44
Energy consumption static (kWh)	0.89 / 0.89	0.79 / 0.88	0.79 / N/A
Cook time standard load static (min)	52 / 52	52 / 49	52 / NA
Largest baking sheet surface area (cm2)	1175	1175	1175
Connected load (kW)	6.2	5.1	4.1
Fuse rating (A)	30	30	30
Oven/Grill power (max kW)	2.725/ 2.99	2.35/2.975	2.35/1.975
Grill power (max kW)	2.3 / 1.9	2.3 / 1.9	2.3 / N/A

- Heating category of the microwave in line with government guidelines.
 - Installation aperture dimensions, for full details please refer to the installation guidelines.

Overviews



NC7003000M

NC4003000M

Oven Features	NC7003000M	NC4003000M
T = Top / B = Bottom	T / B	T / B
Control Type	Electronic touch	Retractable rotary
Oven capacity (usable)	40 / 46	40 / 46
Number of cooking functions	8 _ 10	5 _ 2
Fully programmable timer	Main oven	Main oven
Cleaning	Catalytic	Catalytic
Oven doors glazing	Triple	Double
Lights	1 x side / 1 x back	1 x back
Cooling fan	•	•
Accessories		
Number of shelves	1 _ 2	1 _ 2
Full width grill / meat pan (with trivet)	•	•
Dimensions		
Appliance dimensions		
Height (mm)	715	715
Width (mm)	594	594
Depth (mm)	548	548
Aperture dimensions		
Height (mm)	870	870
Width (mm)	600	600
Depth (mm)	550	550
Performance		
Energy efficiency class	A / A	A / A
Energy efficiency class in mode static/fan	Fan / Fan	Static / Fan
Energy consumption fan (kWh)	0.79 / 0.79	N/A / 0.79
Cook time standard load fan (min)	49 / 48	NA / 48
Energy consumption static (kWh)	0.89 / 0.79	0.79 / N/A
Cook time standard load static (min)	53 / 50	52 / NA
Largest baking sheet surface area (cm ²)	1175	1175
Connected load (kW)	5.9	4.1
Fuse rating (A)	30	30
Oven/grill power (max kW)	2.725 / 2.99	2.35 / 1.975
Grill power (max kW)	2.3 / 1.9	2.3 / N/A

Overviews



49332i-MN

49002V-MN

Oven Features		
T = Top / B = Bottom	T / B	T / B
Control type	Electronic touch	Electronic touch
Display	LED	LED
Child lock	•	•
Fully programmable timer	•	•
Cleaning (both ovens)	Catalytic	Catalytic
Oven doors glazing	Triple	Triple
Cooling fan	•	•
Hob features		
Hob Type	MaxiSense induction	Ceramic
Automatic heat up (AUTOMAX)	•	
Stop + Go	•	•
Residual heat/hob on indicators	•	•
Boosters	•	
Top oven features		
Number of cooking functions	4	4
Top oven capacity (usable) litres	40	40
Main oven features		
Number of cooking functions	8	8
Main oven capacity (usable) litres	74	74
Heat and hold function	•	•
Fast heat up	•	•
Food probe		
Zone Specification		
No. of cooking zones	4 sections	4
Front left spec		Triple
Front left rating (kW)	2.3 / 3.2	0.8 / 1.6 / 2.3
Front left diameter (mm)	210	120 / 175 / 210
Front right spec		Single
Front right rating (kW)	2.3 / 3.2	1.8
Front right diameter (mm)	210	180
Rear left spec		Single
Rear left rating (kW)	2.3 / 3.2	1.2
Rear left diameter (mm)	210	145
Rear right spec		Dual
Rear right rating (kW)	2.3 / 3.2	0.7 / 1.7
Rear right diameter (mm)	210	120 / 180
Product Dimensions		
Height (mm)	900	900
Width (mm)	596	596
Depth (mm)	600	600
Performance		
Oven temperature range°C	30-280	30-280
Energy efficiency class	A-10%	A-10%
Energy efficiency class in mode	Static/Fan	Static/Fan
Energy consumption fan (kWh)	N/A / 0.89	N/A / 0.89
Cooking standard load fan (mins)	N/A / 47	N/A / 47
Energy consumption static (kWh)	0.69/0.96	0.69/0.96
Cooking standard load static (mins)	41 / 51	41 / 51
Connected load (kW)	10.2	11.4
Fuse rating (A)	30	30
Baking tray surface area (cm)	1424	1424
Oven power (max)	3.5 / 3.5	3.5 / 3.5
Grill power (max)	2.9 / 2.9	2.9 / 2.9

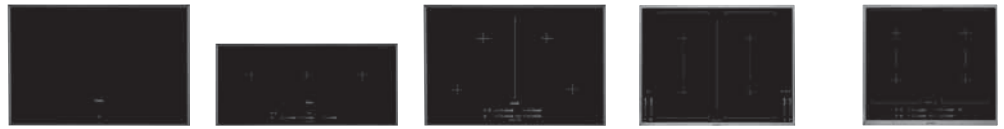
- Energy efficiency class based on a scale of A (most efficient) to G (least efficient).
 - Installation aperture dimensions, for full details please refer to the installation guidelines.

Overviews


HK884400XG
HK683320XG

Features	HK884400XG	HK683320XG
Number of cooking zones	4 sections	3 sections
Control type	DirekTouch	DirekTouch
Display	TFT	TFT
Control position	Front	Front
Bridge function		Left hand side
Automatic heat up (AUTOMAX)	•	•
Stop & Go	•	•
Residual heat indicator	3 step	3 step
Öko timer	•	•
Minute minder	•	•
Count up timer	•	•
Pot sensors	•	•
Boosters (all zones)	•	•
Child lock	•	•
Zone Specification		
Front left spec		
Front left rating (kW)	2.3 / 3.2	2.3 / 3.2
Front left diameter (mm)	210	210
Rear left spec		
Rear left rating (kW)	2.3 / 3.2	2.3 / 3.2
Rear left diameter (mm)	210	210
Front middle spec		
Front middle rating (kW)		
Front middle diameter (mm)		
Rear middle spec		
Rear middle rating (kW)		
Rear middle diameter (mm)		
Front right spec		
Front right rating (kW)	2.3 / 3.2	
Front right diameter (mm)	210	
Rear right spec		Dual zone
Rear right rating (kW)	2.3 / 3.2	1.8 / 2.8 / 3.5 / 3.7
Rear right diameter (mm)	210	180 / 280
Appliance dimensions		
F=Frameless SS=Stainless steel		
Appliance dimensions		
Width (mm)	766	576
Depth (mm)	516	516
Aperture dimensions		
Height (mm)	55	55
Width (mm)	750	560
Depth (mm)	490	490
Electrical Connection		
Connected load (kW)	7.4	7.4
Fuse rating (A)	30	30

Overviews



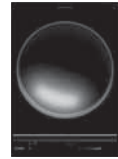
	HK874400FB	HK953400FB	HK854400FB	HK764403XB/FB	HK654400XB/FB
Features					
Number of cooking zones	4 sections	3 sections	4 sections	4 sections	4 sections
Control type	DirekTouch	DirekTouch	DirekTouch	DirekTouch	DirekTouch
Display	LED	LED	LED	LED	LED
Control position	Front	Front	Front	Left & Right	Front
Bridge function				•	Left & right
Automatic heat up (AUTOMAX)	•	•	•	•	•
Stop & Go	•	•	•	•	•
Residual heat indicator	•	3 step	3 step	3 step	3 step
Öko timer	•	•	•	•	•
Minute minder	•	•	•	•	•
Count up timer	•	•	•	•	•
Pot sensors	•	•	•	•	•
Boosters (all zones)	•	•	•	•	•
Child lock	•	•	•	•	•
Zone Specification					
Front left spec	Single			Single	
Front left rating (kW)	2.3 / 3.2		2.3 / 3.2	2.3 / 3.2	1.8 / 2.6
Front left diameter (mm)	210		210	210	180
Rear left spec	Single			Single	
Rear left rating (kW)	2.3 / 3.2	2.3 / 3.2	2.3 / 3.2	2.3 / 3.2	1.8 / 2.6
Rear left diameter (mm)	210	210	210	210	180
Front middle spec					
Front middle rating (kW)					
Front middle diameter (mm)					
Rear middle spec					
Rear middle rating (kW)		2.3 / 3.2			
Rear middle diameter (mm)		210			
Front right spec	Single			Single	
Front right rating (kW)	2.3 / 3.2		2.3 / 3.2	2.3 / 3.2	1.8 / 2.6
Front right diameter (mm)	210		210	210	180
Rear right spec	Single			Single	
Rear right rating (kW)	2.3 / 3.2	2.3 / 3.2	2.3 / 3.2	2.3 / 3.2	1.8 / 2.6
Rear right diameter (mm)	210	210	210	210	180
Appliance dimensions					
F=Frameless SS=Stainless steel					
Appliance dimensions					
Width (mm)	780	910	780	FB 710 / XB 696	FB 590 / XB 576
Depth (mm)	520	410	520	FB 520 / XB 516	FB 520 / XB 516
Aperture dimensions					
Height (mm)	50	50	50	55	55
Width (mm)	750	880	750	680	560
Depth (mm)	490	380	490	490	490
Electrical Connection					
Connected load (kW)	7.4	6.9	7.4	7.4	7.4
Fuse rating (A)	30	30	30	30	30

Overviews


HK854320FB
HK654200FB

Features	HK854320FB	HK654200FB
Number of cooking zones	4	4
Control type	DirekTouch	DirekTouch
Display	LED	LED
Control position	Front	Front
Bridge function	•	•
Automatic heat up (AUTOMAX)	•	•
Stop & Go	•	•
Residual heat indicator	3 step	3 step
Öko timer	•	•
Minute minder	•	•
Count up timer	•	•
Pot sensors	•	•
Boosters (all zones)	•	•
Child lock	•	•
Zone Specification	HK854320FB	HK654200FB
Front left spec	Single	Single
Front left rating (kW)	2.3 / 3.2	2.3 / 3.7
Front left diameter (mm)	210	210
Rear left spec	Single	Single
Rear left rating (kW)	2.3 / 3.2	1.8 / 2.8
Rear left diameter (mm)	210	180
Front middle spec	Single	
Front middle rating (kW)	1.4 / 2.5	
Front middle diameter (mm)	145	
Rear middle spec		
Rear middle rating (kW)		
Rear middle diameter (mm)		
Front right spec		Single
Front right rating (kW)		1.4 / 2.5
Front right diameter (mm)		145
Rear right spec	Single	Single
Rear right rating (kW)	2.4 / 3.7	1.8 / 2.8
Rear right diameter (mm)	300	180
Dimensions	HK854320FB	HK654200FB
Appliance dimensions	HK854320FB	HK654200FB
Width (mm)	780	590
Depth (mm)	520	520
Aperture dimensions	HK854320FB	HK654200FB
Height (mm)	50	55
Width (mm)	750	560
Depth (mm)	490	490
Electrical Connection	HK854320FB	HK654200FB
Connected load (kW)	7.4	7.4
Fuse rating (A)	30	30

Overviews



	HC452400EB	HC452600EB	HC451500EB
Features			
Hob type	2 zone MaxiSense	Teppanyaki	Induction Wok
Control type	DirekTouch	DirekTouch	DirekTouch
Induction	Induction	Induction	Induction
Triple zone			
Bridge function	•		
Automatic heat up (AUTOMAX)	•	•	•
Stop & Go	•		•
Residual heat indicator	3 step	3 step	3 step
Öko timer	•	•	•
Minute minder	•	•	•
Count up timer	•	•	•
Pot sensors	•		•
Booster		•	•
Child lock	•	•	•
Gas safety shut off			
Zone Specification			
Front spec	Induction	Induction	Induction
Front rating (kW)	2.3 / 3.2	1.4	2.3 / 3.2
Front diameter (mm)	170 x 265	145	300
Rear spec	Induction	Induction	
Rear rating (kW)	2.3 / 3.2	1.4	
Rear diameter (mm)	170 x 265	145	
Dimensions			
Appliance dimensions			
Width (mm)	360	360	360
Depth (mm)	520	520	520
Aperture dimensions			
Height (mm)	55	55	125
Width (mm)	340	340	340
Depth (mm)	490	490	490
Electrical Connection			
Voltage (V)	220 - 240	220 - 240	220 - 240
Frequency (Hz)	50 / 60	50 / 60	50 / 60
Connected load (kW)	3.7	2.8	3.2
Fuse rating (A)	16	13	16
LPG conversion kit			

Overviews


HC411520GB

HC412000GB

HC452020EB

Features	HC411520GB	HC412000GB	HC452020EB
Hob type	Wok burner	2 zone gas	2 zone ceramic
Control type	Rotary	Rotary	DirekTouch
Fuel type	Gas	Gas	Electric
Triple zone			•
Bridge function			
Automatic heat up (AUTOMAX)			•
Stop & Go			•
Residual heat indicator			3 step
Öko timer			•
Minute minder			•
Count up timer			•
Pot sensors			
Booster			
Child lock			•
Gas safety shut off	•	•	
Zone Specification	HC411520GB	HC412000GB	HC452020EB
Front spec	Double crown	Semi-rapid	Hilight
Front rating (kW)	5	1.9	1.2
Front diameter (mm)	130	74	145
Rear spec		Rapid	Hilight
Rear rating (kW)		3	0.8 / 1.6 / 2.3
Rear diameter (mm)		104	120 / 175 / 210
Dimensions	HC411520GB	HC412000GB	HC452020EB
Appliance dimensions			
Width (mm)	360	360	360
Depth (mm)	520	520	520
Aperture dimensions			
Height (mm)	60	60	38
Width (mm)	340	340	340
Depth (mm)	490	490	490
Electrical Connection	HC411520GB	HC412000GB	HC452020EB
Voltage (V)	220 - 240	220 - 240	220 - 240
Frequency (Hz)	50 / 60	50 / 60	50 / 60
Connected load (kW)	0.025	3	3.5
Fuse rating (A)	13	13	16
LPG conversion kit	•	•	

Overviews


HK955070FB
HK854080FB
HK764070FB

Features	HK955070FB	HK854080FB	HK764070FB
Number of cooking zones	5	4	4
Control position	Front	Front	Left & Right
Control type	DirekTouch	DirekTouch	DirekTouch
Automatic heat up (AUTOMAX)	•	•	•
Stop & Go	•	•	•
Residual heat indicator	3 step	3 step	3 step
Öko timer	•	•	•
Minute Minder	•	•	•
Count up timer	•	•	•
Child lock	•	•	•
Zone Specification			
Front left spec	Single	Dual	Triple
Front left rating (kW)	1.8	0.7 / 1.7	0.8 / 1.6 / 2.3
Front left diameter (mm)	180	120 / 180	120 / 175 / 210
Rear left spec	Single	Single	Single
Rear left rating (kW)	1.2	1.2	1.2
Rear left diameter (mm)	145	145	145
Rear middle spec	Triple	Triple	
Rear middle rating (kW)	1.05 / 1.95 / 2.7	1.05 / 1.95 / 2.7	
Rear middle diameter (mm)	145 / 210 / 270	145 / 210 / 270	
Front right spec	Single		Single
Front right rating (kW)	1.8		1.8
Front right diameter (mm)	180		180
Rear right spec	Dual	Dual	Dual
Rear right rating (kW)	1.4 / 2.2	1.4 / 2.2	1.4 / 2.2
Rear right diameter (mm)	170 x 265	170 x 265	170 x 265
Dimensions			
Appliance dimensions			
Width (mm)	910	780	710
Depth (mm)	520	520	520
Aperture dimensions			
Height (mm)	38	50	38
Width (mm)	880	750	680
Depth (mm)	490	490	490
Electrical Connection			
Connected load (kW)	7.9	7.8	7.5
Fuse rating (A)	30	30	30

Overviews



HK634060XB



HK634030FB



HK624010FB

Features	HK634060XB	HK634030FB	HK624010FB
Number of cooking zones	4	4	4
Control position	Front	Front	Front
Control type	Touch	Touch	Touch
Automatic heat up (AUTOMAX)	•	•	
Stop & Go	•	•	
Residual heat indicator	•	•	•
Öko timer			
Minute Minder	•	•	
Count up timer			
Child lock	•	•	•
Zone Specification			
Front left spec	Dual	Triple	Dual
Front left rating (kW)	0.75 / 2.2	0.8 / 1.6 / 2.3	0.75 / 2.2
Front left diameter (mm)	120 / 210	120 / 175 / 210	120 / 210
Rear left spec	Single	Single	Single
Rear left rating (kW)	1.2	1.2	1.2
Rear left diameter (mm)	145	145	145
Rear middle spec			
Rear middle rating (kW)			
Rear middle diameter (mm)			
Front right spec	Single	Single	Single
Front right rating (kW)	1.2	1.2	1.2
Front right diameter (mm)	145	145	145
Rear right spec	Dual	Dual	Single
Rear right rating (kW)	1.5 / 2.4	0.7 / 1.7	1.8
Rear right diameter (mm)	170 x 265	120 / 180	180
Dimensions			
Appliance dimensions			
Width (mm)	576	590	590
Depth (mm)	516	520	520
Aperture dimensions			
Height (mm)	38	38	38
Width (mm)	560	560	560
Depth (mm)	490	490	490
Electrical Connection			
Connected load (kW)	7	6.4	6.4
Fuse rating (A)	30	30	30

Overviews

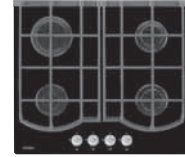
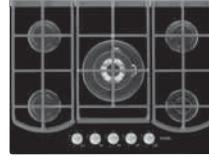

HG795540XB

HG795440XB

HG694340XB

Features	HG795540XB	HG795440XB	HG694340XB
Number of cooking zones	5	5	4
Ignition type	Integral	Integral	Integral
Control position	Front	Front	Front
LED display	•	•	•
Wok support	•	•	•
Cast iron pan support	•	•	•
Safety thermocouples	•	•	•
Zone Specification			
Front left spec		Semi-rapid	Auxillary
Front left rating (kWh)		1.9	1
Front left diameter (mm)		70	54
Rear left spec	Wok triple crown	Semi-rapid	Rapid
Rear left rating (kWh)	3.8	1.9	2.9
Rear left diameter (mm)	122	70	100
Front middle spec	Simmer		
Front middle rating (kWh)	1		
Front middle diameter (mm)	54		
Rear middle spec	Semi-rapid	Wok triple crown	
Rear middle rating (kWh)	1.9	3.8	
Rear middle diameter (mm)	70	122	
Front right spec	Semi-rapid	Simmer	Semi-rapid
Front right rating (kWh)	1.9	1	1.9
Front right diameter (mm)	70	54	70
Rear right spec	Semi-rapid	Semi-rapid	Semi-rapid
Rear right rating (kWh)	1.9	1.9	1.9
Rear right diameter (mm)	70	70	70
Max gas power (kW)	10.5	10.5	7.7
Dimensions			
Appliance dimensions			
Width (mm)	766	696	576
Depth (mm)	516	516	516
Aperture dimensions			
Height (mm)	40	40	40
Width (mm)	750	680	560
Depth (mm)	490	490	490
Electrical Connection			
Fuse rating (A)	3	3	3

Overviews



HG995440XB

HG795440NB

HG694340NB

Features	HG995440XB	HG795440NB	HG694340NB
Number of cooking zones	5	5	4
Ignition type	Integral	Integral	Integral
Control position	Front	Front	Front
LED display	•	•	•
Wok support	•	•	•
Cast iron pan support	•	•	•
Safety thermocouples	•	•	•
Zone Specification	HG995440XB	HG795440NB	HG694340NB
Front left spec	Simmer	Semi-rapid	Simmer
Front left rating (kWh)	1.0	1.9	1
Front left diameter (mm)	54	70	54
Rear left spec	Semi-rapid	Semi-rapid	Rapid
Rear left rating (kWh)	1.9	1.9	2.9
Rear left diameter (mm)	70	70	10
Front middle spec			
Front middle rating (kWh)			
Front middle diameter (mm)			
Rear middle spec	Wok triple crown	Wok triple crown	
Rear middle rating (kWh)	3.9	3.8	
Rear middle diameter (mm)	122	122	
Front right spec	Semi-rapid	Simmer	Semi-rapid
Front right rating (kWh)	1.9	1	1.9
Front right diameter (mm)	70	54	70
Rear right spec	Semi-rapid	Semi-rapid	Semi-rapid
Rear right rating (kWh)	1.9	1.9	1.9
Rear right diameter (mm)	70	70	70
Max gas power (kW)	10.6	10.5	7.7
Dimensions	HG995440XB	HG795440NB	HG694340NB
Appliance dimensions	HG995440XB	HG795440NB	HG694340NB
Width (mm)	896	680	590
Depth (mm)	516	510	520
Aperture dimensions	HG995440XB	HG795440NB	HG694340NB
Height (mm)	53	45	30
Width (mm)	880	560	560
Depth (mm)	490	480	480
Electrical Connection	HG995440XB	HG795440NB	HG694340NB
Fuse rating (A)	3	3	3

Overviews


HG755520UM
HG755420UM
HG654320UM

Features	HG755520UM	HG755420UM	HG654320UM
Number of cooking zones	5	5	4
Ignition type	Integral	Integral	Integral
Control position	Front	Front	Front
LED display			
Wok support			
Cast iron pan support	•	•	•
Safety thermocouples	•	•	•
Zone Specification			
Front left spec		Semi-rapid	Simmer
Front left rating (kWh)		1.9	1
Front left diameter (mm)		70	54
Rear left spec	Wok triple crown	Semi-rapid	Rapid
Rear left rating (kWh)	3.8	1.9	2.9
Rear left diameter (mm)	122	70	10
Front middle spec	Simmer		
Front middle rating (kWh)	1		
Front middle diameter (mm)	54		
Rear middle spec	Semi-rapid	Wok triple crown	
Rear middle rating (kWh)	1.9	3.8	
Rear middle diameter (mm)	70	100	
Front right spec	Semi-rapid	Simmer	Semi-rapid
Front right rating (kWh)	1.9	1	1.9
Front right diameter (mm)	70	54	70
Rear right spec	Semi-rapid	Semi-rapid	Semi-rapid
Rear right rating (kWh)	1.9	1.9	1.9
Rear right diameter (mm)	70	70	70
Max gas power (kW)	10.5	10.5	7.7
Dimensions			
Appliance dimensions			
Width (mm)	745	750	595
Depth (mm)	515	515	525
Aperture dimensions			
Height (mm)	30	30	30
Width (mm)	560	560	560
Depth (mm)	480	480	480
Electrical Connection			
Fuse rating (A)	3	3	3

Overviews


HG956440SM

HG755440SM

HG654440SM

HG654320NM

Features	HG956440SM	HG755440SM	HG654440SM	HG654320NM
Number of cooking zones	6	5	4	4
Ignition type	Integral	Integral	Integral	Integral
Control position	Front	Front	Front	Front
LED display	•	•	•	
Wok support	•	•	•	
Cast iron pan support	•	•	•	•
Safety thermocouples	•	•	•	•
Zone Specification				
Front left spec	Rapid	Semi-rapid	Semi-rapid	Semi-rapid
Front left rating (kWh)	3	2	2	2
Front left diameter (mm)	100	70	70	70
Rear left spec	Simmer	Semi-rapid	Semi-rapid	Semi-rapid
Rear left rating (kWh)	1	2	2	2
Rear left diameter (mm)	54	70	70	70
Front middle spec	Semi-rapid			
Front middle rating (kWh)	2			
Front middle diameter (mm)	70			
Rear middle spec	Semi-rapid	Wok triple crown		
Rear middle rating (kWh)	2	4		
Rear middle diameter (mm)	70	122		
Front right spec	Wok triple crown	Simmer	Simmer	Simmer
Front right rating (kWh)	4	1	1	1
Front right diameter (mm)	122	54	54	54
Rear right spec	Simmer	Rapid	Wok triple crown	Rapid
Rear right rating (kWh)	1	3	4	3
Rear right diameter (mm)	54	100	122	100
Max gas power (kW)	13	12	9	8
Dimensions				
Appliance dimensions				
Width (mm)	894	744	594	594
Depth (mm)	510	510	510	510
Aperture dimensions				
Height (mm)	30	30	30	30
Width (mm)	830	560	560	560
Depth (mm)	480	480	480	480
Electrical Connection				
Fuse rating (A)	3	3	3	3

Overviews


X66453MV0/BV0
X69453MV0/BV0

Features	X66453MV0/BV0	X69453MV0/BV0
Control type	DirekTouch	DirekTouch
Fan speed	4	4
Lights (W)	2 x 20 Halogen	2 x 20 Halogen
Charcoal filter included	•	•
Metal grease filter	•	•
Intensive setting	•	•
Ducted maximum (ca.m3/h)	490	490
Ducted intensive (ca.m3/h)	560	560
Noise (max. setting) ducted (dB (A))	60	60
Recirculation maximum (ca.m3/h)	330	330
Recirculation intensive (ca.m3/h)	350	350
Noise (max. setting) recirculation (dB (A))	59	59
Installation height from		
Electric hob (mm)	400	400
Gas hob (mm)	400	400
Dimensions		
Height for ducted (mm)	649	649
Height for recirculation (if different) (mm)		
Width (mm)	598	898
Depth (mm)	358	358
Other		
Ventilation hose diameter (mm)	150	150
Fuse rating (A)	13	13

- CDK6FR - 150mm (6") diameter flexible ducting kit, 3 metre length. For use with all AEG hoods.

CDK5F - 120mm (5") diameter flexible ducting kit, 1 metre length. 100mm (4") reduction collar included. For use with all AEG hoods up to 1 metre ducting.

CDK5FR - 120mm (5") diameter flexible ducting kit for ducting hoods situated away from an exterior wall, up to 3 metres. 100mm (4") reduction collar included. For use with all AEG hoods.

- For full installation aperture dimensions see installation instructions.

Overviews


X91384Mi0

X69453MD0

X67453MD0

X66453MD0

Features	X91384Mi0	X69453MD0	X67453MD0	X66453MD0
Control type	DirekTouch	DirekTouch	DirekTouch	DirekTouch
Fan speed	Variable	4	4	4
Lights (W)	4 x 2.5 LED	2 x 20 Halogen	2 x 20 Halogen	2 x 20 Halogen
Charcoal filter included	•	•	•	•
Metal grease filter	•	•	•	•
Intensive setting	•	•	•	•
Ducted maximum (ca.m3/h)	640	470	470	470
Ducted intensive (ca.m3/h)	800	530	530	530
Noise (max. setting) ducted (dB (A))	68	63	63	63
Recirculation maximum (ca.m3/h)	370	310	310	310
Recirculation intensive (ca.m3/h)	440	340	340	340
Noise (max. setting) recirculation (dB (A))	67	62	62	62
Installation height from				
Electric hob (mm)	500	500	500	500
Gas hob (mm)	650	650	650	650
Dimensions				
Height for ducted (mm)	760 - 1105	785 - 1050	785 - 1050	785 - 1050
Height for recirculation (if different) (mm)		785 - 920	785 - 920	785 - 920
Width (mm)	998	898	698	598
Depth (mm)	696	490	490	490
Other				
Ventilation hose diameter (mm)	150	150	150	150
Fuse rating (A)	13	13	13	13

- CDK6FR - 150mm (6") diameter flexible ducting kit, 3 metre length. For use with all AEG hoods.

CDK5F - 120mm (5") diameter flexible ducting kit, 1 metre length. 100mm (4") reduction collar included. For use with all AEG hoods up to 1 metre ducting.

CDK5FR - 120mm (5") diameter flexible ducting kit for ducting hoods situated away from an exterior wall, up to 3 metres. 100mm (4") reduction collar included. For use with all AEG hoods.

- For full installation aperture dimensions see installation instructions.

Overviews


Di9814-M
DD9893-M
HD6470-M

Features	Di9814-M	DD9893-M	HD6470-M
Control type	Electronic touch	Electronic touch	Electronic touch
Fan speed	4	4	3
Lights (W)	4 x 20 Halogen	2 x 20 Halogen	2 x 20 Halogen
Charcoal filter included	•	•	•
Metal grease filter	•	•	•
Intensive setting	•	•	•
Ducted maximum (ca.m3/h)	490	500	470
Ducted intensive (ca.m3/h)	570	620	
Noise (max. setting) ducted (dB (A))	63	60	64
Recirculation maximum (ca.m3/h)	370	330	270
Recirculation intensive (ca.m3/h)	410	395	
Noise (max. setting) recirculation (dB (A))	67	67	67
Installation height from			
Electric hob (mm)	500	500	500
Gas hob (mm)	650	650	650
Dimensions			
Height for ducted (mm)	820 - 1100	970 - 1500	660 - 1120
Height for recirculation (if different) (mm)			755 - 1220
Width (mm)	998	900	598 - 698 - 798
Depth (mm)	600	390	500
Other			
Ventilation hose diameter (mm)	150	150	150
Fuse rating (A)	13	13	13

– CDK6FR - 150mm (6") diameter flexible ducting kit, 3 metre length. For use with all AEG hoods.

CDK5F - 120mm (5") diameter flexible ducting kit, 1 metre length. 100mm (4") reduction collar included. For use with all AEG hoods up to 1 metre ducting.

CDK5FR - 120mm (5") diameter flexible ducting kit for ducting hoods situated away from an exterior wall, up to 3 metres. 100mm (4") reduction collar included. For use with all AEG hoods.

– For full installation aperture dimensions see installation instructions.

Overviews


DK4460-M
DK4490-M
HC5690-M
HC3360-M
X79283MG0

Feature	DK4460-M	DK4490-M	HC5690-M	HC3360-M	X79283MG0
Control type	Electronic Push Button	Electronic Push Button	Touch	Electronic Push Button	Electronic Push Buttons
Fan speed	4	4	4	3	4
Lights (W)	2 x 20 Halogen	2 x 20 Halogen	2 x 20 Halogen	2 x 20 Halogen	4 x 20 Halogen
Charcoal filter included	•	•	•	•	No
Metal grease filter	•	•	•	•	•
Intensive setting	•	•	•	•	•
Ducted maximum (ca.m3/h)	304	304	520	410	780
Ducted intensive (ca.m3/h)	423	423	650		880
Noise (max. setting) ducted (dB (A))	62	62	67	62	67
Recirculation maximum (ca.m3/h)	243	243	400	210	430
Recirculation intensive (ca.m3/h)	282	282	450		500
Noise (max. setting) recirculation (dB (A))	66	66	72	64	66
Installation height from					
Electric hob (mm)	500	500	500	500	650
Gas hob (mm)	650	650	650	650	650
Dimensions					
Height for ducted (mm)	705-1140	705-1140	820 - 1275	750 - 1130	
Height for recirculation (if different) (mm)			820 - 1370	750 - 1220	
Width (mm)	598	898	898	598	900
Depth (mm)	500	500	480	470	500
Other					
Ventilation hose diameter (mm)	150	150	150	150	150
Fuse rating (A)	13	13	13	13	13

- CDK6FR - 150mm (6") diameter flexible ducting kit, 3 metre length. For use with all AEG hoods.

CDK5F - 120mm (5") diameter flexible ducting kit, 1 metre length. 100mm (4") reduction collar included. For use with all AEG hoods up to 1 metre ducting.

CDK5FR - 120mm (5") diameter flexible ducting kit for ducting hoods situated away from an exterior wall, up to 3 metres. 100mm (4") reduction collar included. For use with all AEG hoods.

- For full installation aperture dimensions see installation instructions.

Overviews


DH1690-M
DL7275-M9
DF6164-M
DE6261-ML

Features	DH1690-M	DL7275-M9	DF6164-M	DE6261-ML
Control type	Electronic Push Buttons	Slider	Slider	Electronic slider
Fan speed	4	4	3	Variable
Lights (W)	NA	2 x 20 Halogen	2 x 20 Halogen	2 x 20 Halogen
Charcoal filter included	•	•	•	•
Metal grease filter	•	•	•	•
Intensive setting		•		•
Ducted maximum (ca.m3/h)	900	440	324	300
Ducted intensive (ca.m3/h)		540		450
Noise (max. setting) ducted (dB (A))	58	64	63	56
Recirculation maximum (ca.m3/h)	780	320	246	225
Recirculation intensive (ca.m3/h)		365		250
Noise (max. setting) recirculation (dB (A))	56	70	66	66
Installation height from				
Electric hob (mm)	NA	500	500	500
Gas hob (mm)	NA	700	650	700
Dimensions				
Height for ducted (mm)	300	252	173	400
Height for recirculation (if different) (mm)				
Width (mm)	880	724	598	598
Depth (mm)	108	289	295	270
Other				
Ventilation hose diameter (mm)	150	150	120	120
Fuse rating (A)	13	13	13	13

- CDK6FR - 150mm (6") diameter flexible ducting kit, 3 metre length. For use with all AEG hoods.

CDK5F - 120mm (5") diameter flexible ducting kit, 1 metre length. 100mm (4") reduction collar included. For use with all AEG hoods up to 1 metre ducting.

CDK5FR - 120mm (5") diameter flexible ducting kit for ducting hoods situated away from an exterior wall, up to 3 metres. 100mm (4") reduction collar included. For use with all AEG hoods.

- For full installation aperture dimensions see installation instructions.

Overviews


KS8404001M
KS8100001M
KE8404001M

Features	KS8404001M	KS8100001M	KE8404001M
Digital touch controls	•	•	•
Digital temperature control	•	•	•
Fully programmable electronic timer	•	•	•
Oven door glazing	Triple	Quadruple	Quadruple
Cleaning	Diamond Glazed Enamel	Diamond Glazed Enamel	Diamond Glazed Enamel
Cooling fan	•	•	•
Steam	•	•	•
Accessories			
Number of shelves		1	2
Grill/meat pan	•	•	•
Dimensions			
Appliance dimensions			
Height (mm)	455	388	455
Width (mm)	594	594	594
Depth (mm)	540	567	540
Aperture dimensions			
Height (mm)	450	380	450
Width (mm)	558	560	558
Depth (mm)	580	550	580
Performance			
Energy efficiency class 2	A	A-10%	A-10%
Energy consumption fan (kWh)	0.74	0.71	0.71
Energy efficiency class in mode static/fan	Fan	Fan	Fan
Oven temperature range (°C)	30 - 250	30 - 230	30 - 230
Fan/convection oven output (kW)	2.97		
Grill output (kW)	2.6	1.5	
Steam power output (kW)		1.8	
Connected load (kW)	2.973	3.4	1.5
Fuse rating (A)	13	20	13
Oven/grill power (max) (kW)	2.97 / 2.6	3.4 / 1.65	1.5 / N/A
Interior lights (W)	1 x back, 1 x side	1 x side	1 x top

Overviews



PE4541-M

Features	
Electronic touch controls	•
LED display	•
Pre-programmed coffee selection	•
Water sensor with LED when refill required	•
Steam/water spout with LED indicators	•
Height adjustable coffee dispenser	•
Lamp	•
Dimensions	
Appliance dimensions	
Product height (mm)	455
Product width (mm)	594
Product depth (mm)	361
Built-in dimensions	
Built-in height (mm)	450
Built-in width (mm)	560
Built-in depth (mm)	550
Electrical Connection	
Connected load (kW)	1.35
Fuse rating (A)	13
Working pressure (bar)	15

Overviews


KM8403001M

KR8403001M

Features	KM8403001M	KR8403001M
Combi microwave, fan oven and grill	•	
Duo microwave and grill		•
Solo microwave		
Oven volume (litres)	40	38
Auto defrost by weight programmes	4	4
Auto cook by weight programmes	8	4
Control type	Touch	Touch
Electronic clock/programmer	•	•
Quickstart	•	•
Power save mode	•	•
Programme end signal	•	•
Drop down door		•
Under counter installation		•
In-column installation	•	•
Dimensions		
Appliance dimensions		
Height (mm)	455	455
Width (mm)	594	594
Depth (mm)	542	542
Built-in dimensions		
Built-in height (mm)	450	450
Built-in width (mm)	560	560
Built-in depth (mm)	580	550
Performance		
Microwave output (IEC 705) (W)	1000	1000
Heating category 1	E	E
Microwave power levels	5	5
Grill output (kW)	1.9	1.5
Convection oven output (kW)		
Connected load (kW)	3	3
Fuse rating (A)	20	20

Overviews


KD91404E
KD91403E
KD92903E

Features	KD91404E	KD91403E	KD92903E
Place settings	6	6	12
Cups and glass warming (40°C)	•	•	•
Plate warming (60°C)	•	•	•
Food warming (80°C max)	•	•	•
Defrosting (30°C max)	•	•	•
Heating element	•	•	•
Fan air circulation	•	•	•
Rotary control knob	•	•	•
Variable temperature control	•	•	•
On/off LED	•	•	•
Anti-slip mat	•	•	•
Temperature range	30 - 80	30 - 80	30 - 80
Product Dimensions			
Appliance dimensions			
Height (mm)	140	140	295
Width (mm)	594	594	594
Depth (mm)	535	535	535
Built-in dimensions			
Built-in height (mm)	140	140	295
Built-in width (mm)	560	560	560
Built-in depth (mm)	550	550	550
Performance			
Connected load (kW)	0.43	0.43	0.55
Fuse rating (A)	13	13	13
Power (max (kW))	0.43	0.43	0.55

Overviews



MCD2664E-M

MCD1763E-M

Features	MCD2664E-M	MCD1763E-M
Combi microwave, fan oven and grill		
Duo microwave and grill	•	•
Solo microwave		
Oven volume (litres)	26	17
Auto defrost by weight programmes	4	4
Auto cook by weight programmes	8	6
Control type	Rotary with push buttons	Rotary with push buttons
Electronic clock/programmer	•	•
Quickstart	•	•
Power save mode	•	•
Programme end signal	•	•
Drop down door		
Under counter installation		
In-column installation	•	•
Dimensions		
Appliance dimensions		
Height (mm)	459	371
Width (mm)	594	594
Depth (mm)	437	316
Built-in dimensions		
Built-in height (mm)	450	360
Built-in width (mm)	560	560
Built-in depth (mm)	580	300
Performance		
Microwave output (IEC 705) (W)	900	800
Heating category 1	E	E
Microwave power levels	5	5
Grill output (kW)	1	1
Convection oven output (kW)		
Connected load (kW)	2.4	2.2
Fuse rating (A)	13	13

- Heating category of the microwave in line with government guidelines.
 - Installation aperture dimensions, for full details please refer to the installation guidelines.

Overviews


MC2664E-M
MC1763E-M
MC1753E-M

Features	MC2664E-M	MC1763E-M	MC1753E-M
Combi microwave, fan oven and grill			
Duo microwave and grill			
Solo microwave	•	•	•
Oven volume (litres)	26	17	17
Auto defrost by weight programmes	4	4	4
Auto cook by weight programmes	8	6	6
Control type	Rotary with push buttons	Rotary with push buttons	Rotary with push buttons
Electronic clock/programmer	•	•	•
Quickstart	•	•	•
Power save mode	•	•	•
Programme end signal	•	•	•
Drop down door			
Under counter installation	•	•	•
In-column installation	•	•	•
Dimensions			
Appliance dimensions			
Height (mm)	459	371	371
Width (mm)	594	594	494
Depth (mm)	437	316	316
Built-in dimensions			
Built-in height (mm)	450	360	360
Built-in width (mm)	560	560	460
Built-in depth (mm)	580	300	300
Performance			
Microwave output (IEC 705) (W)	900	800	800
Heating category 1	E	E	E
Microwave power levels	5	5	5
Grill output (kW)			
Convection oven output (kW)			
Connected load (kW)	1.3	1.2	1.2
Fuse rating (A)	13	13	13

Overviews


F99015Vi0P

F88060Vi0P

F78400Vi0P

F65040iM0P

Features	F99015Vi0P	F88060Vi0P	F78400Vi0P	F65040iM0P
Auto Sense				•
Capacity (number of IEC place settings)	12	12	9	12
Control type	LCD with push buttons	LED with Push buttons	LED with push buttons	LED with Push buttons
ExtraSilent	•	•	•	
Number of temperatures	6	5	5	4
Number of programmes	9	8	8	5
Automatic 45°C - 70°C programme	•	•	•	
50 min 55°C	•	•	•	
Quickwash 60°C, 30min programme	•	•	•	•
Pro 70°C programme	•	•	•	•
Glass 45°C programme	•	•	•	
Prerinse programme	•	•	•	•
DryTech system	•	•	•	•
Multi-tab option	•	•	•	•
Delay start	•	•	•	•
Time remaining	•	•	•	•
Height adjustable upper basket	•	•	•	•
Foldable plate racks - bottom basket	•	•	•	•
Foldable cup shelves - upper basket	•	•	•	•
Foldable cup shelves - bottom basket	•	•	•	•
Moveable cutlery basket	•	•	•	•
Time beam - spotlight	•	•		
Red beam - spotlight			•	
Interior light	•	•		
Double fulcrum hinge	•	•	•	•
Dimensions				
Appliance dimensions				
Height (mm)	818	818	818	818
Width (mm)	596	596	446	596
Depth (mm)	550	550	550	575
Aperture dimensions				
Built-in height (mm)	820 - 900	820 - 880	820 - 900	820 - 880
Built-in width (mm)	600	600	450	600
Built-in depth (mm)	570	570	570	570
Furniture door dimensions				
Door height (mm)	680 - 775	680 - 775	644 - 720	570 - 655
Door width (mm)	596	596	450	600
Door weight (min - max)	1.5 - 10	1.5 - 10	1.5 - 6	1.5 - 8
Performance				
Declared Programme	Eco 50	Eco 50	Eco 50	Eco 50
Energy efficiency class	A+	A+	A+	A++
Energy efficiency index	62.8	62.8	62.4	55.8
Annual energy consumption (kWh)	290	290	220	258
Annual water consumption (litres)	2860	2800	2495	2860
Energy consumption (kWh)	1.030	1.030	0.79	0.91
Water consumption (litres)	10.02	10	8.9	9.8
Drying performance	A	A	A	A
Maximum noise level (dB(A) re 1pw)	39	41	45	46
Cleaning performance	A	A	A	A
Programme time (mins)	195	170	195	160
Stand-by power (W)	0.1	0.1	0.1	0.1
Off mode power (W)	0.1	0.1	0.1	0.1
Left-on mode power (W)	0.1	0.1	0.1	0.1
Left-on mode duration (mins)	10	10	10	10
Other				
Voltage	220-240	220-240	220-240	220-240
Frequency	50	50	50	50
Connected load	2.2	2.2	2.2	2.2
Fuse rating	13	13	13	13
Minimum water pressure (1 bar / 15 psi)	•	•	•	•
Inlet hose with 3/4" BSP thread hose connection	•	•	•	•
Water softener	•	•	•	•
Water supply	Cold	Cold	Cold	Cold
Salt refill indicator	•	•	•	•
Rinse aid refill indicator	•	•	•	•
Water hardness setting	•	•	•	•
Top and side fixing brackets	•	•	•	•
Worktop steam protection (metallic)	•	•	•	•

Overviews


F55002Vi0P
F34502Vi0
F55402Vi0P
F55200Vi0

Features	F55002Vi0P	F34502Vi0	F55402Vi0P	F55200Vi0
Auto Sense				
Capacity (number of IEC place settings)	12	12	9	6
Control type	LED with push buttons	Push buttons	LED with push buttons	LED with push buttons
ExtraSilent				•
Number of temperatures	4	3	4	3
Number of programmes	5	4	5	5
Automatic 45°C - 70°C programme	•		•	•
50 min 55°C				
Quickwash 60°C, 30min programme	•		•	
Pro 70°C programme		•	•	•
Glass 45°C programme				
Prerinse programme	•	•	•	
DryTech system	•	•	•	•
Multi-tab option	•		•	
Delay start	•	•	•	•
Time remaining	•	•	•	•
Height adjustable upper basket	•	•	•	
Foldable plate racks - bottom basket	•	•	•	
Foldable cup shelves - upper basket	•	•		
Foldable cup shelves - bottom basket	•	•	•	
Moveable cutlery basket	•	•		
Time beam - spotlight	•			
Red beam - spotlight	•		•	
Interior light				
Double fulcrum hinge	•		•	
Dimensions				
Appliance dimensions				
Height (mm)	818	818	818	447
Width (mm)	596	596	446	545
Depth (mm)	550	555	550	494
Aperture dimensions				
Built-in height (mm)	820 - 900	820 - 880	820 - 900	450 - 460
Built-in width (mm)	600	600	450	550
Built-in depth (mm)	570	570	570	510
Furniture door dimensions				
Door height (mm)	680 - 775	645 - 720	644 - 720	460 - 470
Door width (mm)	596	596	446	545
Door weight (min - max)	1.5-10kg	2-10kg	1.5-6kg	4.7kg max
Performance				
Declared Programme	Eco 50	Eco 50	Eco 50	Eco 55
Energy efficiency class	A+	A+	A	A
Energy efficiency index	62.8	62.8	70.9	67.8
Annual energy consumption (kWh)	290	290	250	188
Annual water consumption (litres)	3140	3080	2495	2100
Energy consumption (kWh)	1.00	0.86	0.89	0.64
Water consumption (litres)	11	13	8.5	7.5
Drying performance	A	A	A	B
Maximum noise level (dB(A) re 1pw)	47	51	49	45
Cleaning performance	A	A	A	A
Programme time (mins)	155	145	195	150
Stand-by power (W)	0.1	0.99	0.1	0.99
Off mode power (W)	0.1	0.5	0.1	0.1
Left-on mode power (W)	0.1	0.5	0.1	0.99
Left-on mode duration (mins)	10		10	
Other				
Voltage	220-240	220-240	220-240	240
Frequency	50	50	50	50
Connected load	2.2	2.2	2.2	1.08
Fuse rating	13	13	13	13
Minimum water pressure (1 bar / 15 psi)	•	•	•	•
Inlet hose with 3/4" BSP thread hose connection	•	•	•	•
Water softener	•	•	•	•
Water supply	Cold	Cold	Cold	Cold
Salt refill indicator	•	•	•	•
Rinse aid refill indicator	•	•	•	•
Water hardness setting	•	•	•	•
Top and side fixing brackets	•	•	•	•
Worktop steam protection (metallic)	•	•	•	•

Overviews


F99009W0P/M0P

F88072W0P

F77012W0P/M0P

Features	F99009W0P/M0P	F88072W0P	F77012W0P/M0P
Capacity (number of IEC place settings)	12	12	12
Control type	LCD with touch buttons	LCD with touch buttons	LCD with push buttons
ExtraSilent	•	•	•
Number of temperatures	6	5	7
Number of programmes	9	8	5
Automatic 45°C - 70°C programme	•		
50 min 55°C	•		
Quickwash 60°C, 30min programme	•	•	•
Pro 70°C programme	•	•	•
Glass 45°C programme	•	•	
Rinse and hold programme	•	•	•
DryTech system	•	•	•
Multi-tab option	•	•	•
Delay start	1-24hrs	1-24hrs	1-24hrs
Time remaining	•	•	•
Height adjustable upper basket	•	•	•
Foldable plate racks - bottom basket	•	•	•
Foldable cup shelves - upper basket	•	•	•
Moveable cutlery basket	•	•	•
Interior light	•		
Autosense		•	•
Eco50		•	•
ProZone		•	
Product Dimensions			
Height (mm)	850	850	850
Width (mm)	596	596	596
Depth (mm)	610	610	610
Performance			
Declared Programme	Eco 50	Eco 50	Eco 50
Energy efficiency class	A+	A++	A++
Energy efficiency index	62.8	55.8	55.8
Annual energy consumption (kWh)	290	258	258
Annual water consumption (litres)	2860	2860	2860
Energy consumption (kWh)	1.030	0.92	0.92
Water consumption (litres)	10.2	10.2	10.2
Drying performance	A	A	A
Maximum noise level (dB(A) re 1pw)	39	44	44
Cleaning performance	A	A	A
Programme time (mins)	170	195	195
Stand-by power (W)	0.1	0.1	0.1
Off mode power (W)	0.1	0.1	0.1
Left-on mode power (W)	0.1	0.1	0.1
Left-on mode duration (mins)	10	10	10
Auto Off	•	•	•
Other			
Voltage	220-240	220-240	220-240
Frequency	50	50	50
Connected load	2.2	2.2	2.2
Fuse rating	13	13	13
Minimum water pressure (1 bar / 15 psi)	•	•	•
Inlet hose with 3/4" BSP thread hose connection	•	•	•
Water softener	•	•	•
Water supply	Cold	Cold	Cold
Salt refill indicator	•	•	•
Rinse aid refill indicator	•	•	•
Water hardness setting	•	•	•

Overviews


F55020W0P
F45013W0
F88419W0P

Features	F55020W0P	F45013W0	F88419W0P
Capacity (number of IEC place settings)	12	12	9
Control type	LCD with push buttons	LCD with push buttons	LCD with touch buttons
ExtraSilent			•
Number of temperatures	4	4	6
Number of programmes	5	5	8
Automatic 45°C - 70°C programme	•	•	•
50 min 55°C	•		
Quickwash 60°C, 30min programme	•	•	•
Pro 70°C programme	•	•	•
Glass 45°C programme		•	•
Rinse and hold programme	•	•	•
DryTech system	•	•	•
Multi-tab option	•	•	•
Delay start	1-24hrs	1-19hrs	1-24hrs
Time remaining	•	•	•
Height adjustable upper basket	•	•	•
Foldable plate racks - bottom basket	•	•	•
Foldable cup shelves - upper basket	•		•
Moveable cutlery basket	•		
Interior light			•
Autosense			
Eco50			
ProZone			
Product Dimensions	F55020W0P	F45013W0	F88419W0P
Height (mm)	850	850	850
Width (mm)	596	600	446
Depth (mm)	610	610	610
Performance	F55020W0P	F45013W0	F88419W0P
Declared Programme	Eco 50	Eco 50	Eco 50
Energy efficiency class	A+	A+	A+
Energy efficiency index	62.8	62.3	62.0
Annual energy consumption (kWh)	290	288	222
Annual water consumption (litres)	3140	3475	2495
Energy consumption (kWh)	1.00	1.01	0.79
Water consumption (litres)	11.0	12.4	8.9
Drying performance	A	A	A
Maximum noise level (dB(A) re 1pw)	49	47	45
Cleaning performance	A	A	A
Programme time (mins)	160	168	166
Stand-by power (W)	0.1	0.99	0.1
Off mode power (W)	0.1	0.1	0.1
Left-on mode power (W)	0.1	0.99	0.1
Left-on mode duration (mins)	10		10
Auto Off	•		•
Other	F55020W0P	F45013W0	F88419W0P
Voltage	220-240	220-240	220-240
Frequency	50	50	50
Connected load	2.2	2.2	2.2
Fuse rating	13	13	13
Minimum water pressure (1 bar / 15 psi)	•	•	•
Inlet hose with 3/4" BSP thread hose connection	•	•	•
Water softener			
Water supply	Cold	Cold	Cold
Salt refill indicator	•	•	•
Rinse aid refill indicator	•	•	•
Water hardness setting	•	•	•

Overviews



SWD81800G1

Features	
Dual zone electronic temperature controls	•
Coolmatic	•
Door open warning alarm	•
Fridge Features	
Gross capacity (litres/cubic feet)	330/11.6
Net capacity (litres/cubic feet)	325/11.5
Defrost - fridge	Automatic
MultiAirflow	•
Glass shelves (full depth)	6 (wood)
Large verticle bottle storage drawer	•
Soft rise LED lighting	•
Dimensions	
Height (mm)	1772
Width (mm)	540
Depth (mm)	545
Net weight (kg)	
Built-in Dimensions	
Built-in height (mm)	1780
Built-in width (mm)	560
Built-in depth (mm)	550
Door fixing	Right hinged
Performance	
Annual energy consumption kWh	170
Energy efficiency class	A
Energy efficiency index %	54.8
Climate class	SN-N-ST
Noise dB (A)	34
Freezing capacity kg/24hr	
Power cut safe rising time hr	
Minimum ambient temperature °C	10
Other	
Reversible door opening	Right hinged

Overviews



S95800XTM0



S95500XNM0



S96090XVM1

Features	S95800XTM0	S95500XNM0	S96090XVM1
LCD touch display	•	•	•
Wine cellar	•		
Coolmatic	•	•	•
Shopping mode	•	•	•
Holiday mode	•	•	•
Frostmatic	•	•	•
Door open alarm	•	•	•
High temperature alarm	•	•	•
Fridge Features			
Fridge gross capacity (litres/cubic feet)	332/11.7	332/11.7	380/13.4
Fridge net capacity (litres/cubic feet)	330/11.6	330/11.6	359/12.7
Defrost - fridge	Automatic	Automatic	Automatic
Dynamic air technology	•	•	•
Variable temperature compartment			•
Glass shelves (full depth)	4	4	3
Glass shelves (half depth)	2	2	
Full width transparent salad drawers with glass lid	•	•	•
Dairy compartment with lid	•	•	•
Full width door shelves	4	4	4
Half width sliding shelf	•	•	
Egg tray	2	2	
Interior LED light	•	•	•
Wine Cooler Features			
Wine cellar gross capacity (litres/cubic feet)	164/5.8		
Wine cellar net capacity (litres/cubic feet)	162/5.7		
Defrost - fridge	Automatic		
Multi airflow cooling fan	•		
Wooden shelves	4		
Storage drawer	•		
Interior LED light	•		
Freezer Features			
Gross capacity (litres/cubic feet)	91/3.2	220/7.8	228/8
Net capacity (litres/cubic feet)	78/2.8	208/7.3	179/6.3
Star Rating	4 Star	4 Star	4 Star
Freezing capacity (kg/24hours)	10	20	13
Defrost - freezer	Automatic	Automatic	Automatic
Power cut safe hours	25	21	10
Freezer drawers	4	5	2
Fold down compartments		2	
Glass shelves			3
Ice packs	2	2	
Design			
Main colour	Stainless steel	Stainless steel	Stainless steel
Product Dimensions			
Height (mm)	1855	1855	1770
Width (mm)	1090	1090	912
Depth (mm)	575	575	738
Depth with door open (mm)	1092	1092	1164
Performance			
Annual energy consumption kWh	429	426	447
Energy efficiency class	A+	A+	A+
Energy efficiency index %	43.9	43.9	41.9
Climate class	N-ST-T	SN-N-ST	SN-N-ST-T
Noise dB (A)	38	40	44
Freezing capacity kg/24hr	10	20	13
Power cut safe rising time hr	25	21	4
Minimum ambient temperature °C	16	10	10

Overviews



S94400CTX0

S83600CM

S83800CT

S83200CM

S73400CT

Features	S94400CTX0	S83600CM	S83800CT	S83200CM	S73400CT
Mechanical temperature control					
Electronic temperature control					
On-door LCD touch display	•	•		•	
LCD touch controls/Electronic control			•/		/•
Shopping mode	•	•	•	•	
Holiday mode	•	•	•	•	
High temperature alarm	•	•	•	•	
Frostmatic	•	•	•	•	
Coolmatic	•	•	•	•	•
Minute minder	•	•	•	•	
Door opening	Right	Right	Right & Reversible	Right	Right & Reversible
Fridge Features	S94400CTX0	S83600CM	S83800CT	S83200CM	S73400CT
Gross capacity (litres/cubic feet)	312/11.01	291/10.27	291/10.27	249/8.79	249/8.79
Net capacity (litres/cubic feet)	305/10.77	280/9.88	285/10.0	239/8.44	245/8.65
Defrost - fridge	Automatic	Automatic	Automatic	Automatic	Automatic
Glass shelves	3	3	3	2	3
Dynamic air technology/multi-airflow cooling	/•	/•	•/	/•	•/
Fresh box with quick chill		•	•	•	•
Large telescopic pull out salad drawer	•	•	•	•	•
2 extra deep half width salad drawers					
Dairy compartment with lid	•	•	•	•	•
No. of full width door shelves	2	3	3	2	2
Half width sliding door shelf					
Internal fridge light/soft rise LED lighting	•/	/•	/•	/•	•/
Wine rack (holds 5 bottles)	•	•	•	•	•
Egg tray	1	1	1	1	•
Air purifier	•	•		•	
Freezer Features	S94400CTX0	S83600CM	S83800CT	S83200CM	S73400CT
Gross capacity (litres/cubic feet)	128/4.52	91/3.21	91/3.21	91/3.21	91/3.21
Net capacity (litres/cubic feet)	102/3.60	78/2.75	76/2.66	78/2.75	78/2.75
Defrost - freezer	Automatic	Automatic	Automatic	Automatic	Automatic
No. of full width drawers	1	2	2	2	2
No. of half width drawers	1	1	1	1	1
Telescopic freezer drawers	•				
Twist & serve icemaker	•				
Glass freezer shelf					
Design	S94400CTX0	S83600CM	S83800CT	S83200CM	S73400CT
Main colour	S94400CTX0	S83600CMM0	S83800CTM0	S83200CMM0	S73400CTS1
White		S83600CMW0	S83800CTW0	S83200CMW0	S73400CTW1
Product Dimensions	S94400CTX0	S83600CM	S83800CT	S83200CM	S73400CT
Height (mm)	1965	2025	2010	1865	1850
Width (mm)	695	595	595	595	595
Depth (inc. handle) (mm)	669	658	658	658	658
Performance	S94400CTX0	S83600CM	S83800CT	S83200CM	S73400CT
Annual energy consumption kWh	274	330	247	313	315
Energy efficiency class	A+	A+	A++	A+	A+
Energy efficiency index %	32.9	43.9	32.9	43.9	43
Climate class	SN-N-ST-T	SN-N-ST-T	SN-N-ST-T	SN-N-ST-T	SN-N-ST-T
Noise dB (A)	44	44	42	44	43
Freezing capacity kg/24hr	14	10	10	10	4
Power cut safe rising time hr	20	18	18	18	18
Minimum ambient temperature °C	10	10	10	10	10

Energy efficiency class based on a scale of A+++ (most efficient) to D (least efficient). Energy consumption is based on standard test results for 24hrs in accordance with EN153. Actual consumption will depend on how the appliance is used and where it is located. Power cut safe hours = Time for food temperature to rise from -18°C to 9°C with the power off and the door remaining closed. Climate class = The product is suitable for use in ambient temperatures of: SN = 10-32°C; N = 16-32°C; ST = 18-38°C; T = 18-43°C

Overviews



S53600CS



S74100DTX0

Features	S53600CS	S74100DTX0
Mechanical temperature control	•	
Electronic temperature control		•
On-door LCD touch display		
LCD touch controls/Electronic control		
Shopping mode		
Holiday mode		
High temperature alarm		
Frostmatic		•
Coolmatic		
Minute minder		
Door opening	Right & Reversible	Right & Reversible
Fridge Features	S53600CS	S74100DTX0
Gross capacity (litres/cubic feet)	249/8.79	335/11.82
Net capacity (litres/cubic feet)	245/8.65	323/11.40
Defrost - fridge	Manual	Automatic
Glass shelves	2	3
Dynamic air technology/multi airflow cooking		•/
Fresh box with quick chill		
Large telescopic pull out salad drawer		•
2 extra deep half width salad drawers	•	
Dairy compartment with lid	•	•
No. of full width door shelves	2	2
Half width sliding door shelf		•
Internal fridge light/LED lighting	/•	•/
Wine rack (holds 5 bottles)	•	•
Egg tray	1	2
Air purifier		
Freezer Features	S53600CS	S74100DTX0
Gross capacity (litres/cubic feet)	110/3.88	78/2.75
Net capacity (litres/cubic feet)	92/3.25	78/2.75
Defrost - freezer	Automatic	Automatic
No. of full width drawers		
No. of half depth drawers	1	
Telescopic freezer drawers		
Glass freezer shelf		•
Twist & serve ice maker		•
Design	S53600CS	S74100DTX0
Stainless steel	S53600CSS0	S74100DTX0
White	S53600CSW0	
Product Dimensions	S53600CS	S74100DTX0
Height (mm)	1850	1800
Width (mm)	595	695
Depth (inc. handle) (mm)	658	696
Performance	S53600CS	S74100DTX0
Annual energy consumption kWh	235	325
Energy efficiency class	A++	A+
Energy efficiency index %	32.8	43.8
Climate class	N-ST-T	SN-N-ST-T
Noise dB (A)	39	44
Freezing capacity kg/24hr	4	4
Power cut safe rising time hr	20	20
Minimum ambient temperature °C	16	10

Overviews



S54000KM



A72710GN



S63300KD



A72010GN

Features	S54000KM	A72710GN	S63300KD	A72010GN
LCD Touch display	•	•	•	•
Door open alarm	•	•	•	•
High temperature alarm		•		•
Holiday mode	•	•	•	•
Coolmatic	•		•	
Frostmatic		•		•
Minute minder	•	•	•	•
Gross capacity (litres/cu.ft)	386/13.6	250/8.8	325/11.5	200/7
Net capacity (litres/cu.ft)	381/13.4	227/8.1	320/11.3	181/6.3
Defrost fridge/freezer	Automatic	Automatic	Automatic	Automatic
Multi airflow cooling/Dynamic Air Technology	• /		/ •	
Glass shelves	4		4	
Large telescopic salad drawer	2		1	
Dairy compartment with lid	1		1	
Wine rack	•			
No. of door shelves	4		3	
LED lighting	•	•	•	
Egg tray	1		1	
Air purifier	•			
No. of compartments (drawers/flaps)		6/1		5/1
Maxi drawers		3		2
Ice packs		2		2
Door opening	Right & Reversible	Left & Reversible	Right & Reversible	Right & Reversible
Design				
Stainless steel	S54000KMX0	A72710GNX0	S63300KDX0	A72010GNX0
White	S54000KMW0	A72710GNW0	S63300KDW0	A72010GNW0
Stainless steel matching Fridge or Freezer	A72710GNX0	S54000KMX0	A72010GNX0	S63300KDX0
White matching Fridge or Freezer	A72710GNW0	S54000KMW0	A72010GNW0	S63300KDW0
Product Dimensions				
Height (mm)	1850	1850	1540	1540
Width (mm)	595	595	595	595
Depth (mm)	658	658	658	658
Performance				
Annual energy consumption kWh	154	229	110	203
Energy efficiency class	A+	A++	A++	A++
Energy efficiency index %	44	33	33	33
Climate class	SN-N-ST-T	SN-N-ST-T	SN-N-ST-T	SN-N-ST-T
Noise dB (A)	38	42	38	42
Freezing capacity kg/24hr		20		20
Power cut safe rising time hr		20		30
Minimum ambient temperature °C	10	10	10	10

Overviews


S71700TS

A81000TN

A71101TSX0

Features	S71700TS	A81000TN	A71101TSX0
Mechanical temperature control	•		
Electronic temperature control		•	•
High temperature alarm			•
Frostmatic		•	•
Gross capacity (litres/cubic feet)	155/5.47	100/3.53	110/3.9
Net capacity (litres/cubic feet)	152/5.37	80/2.82	93/3.2
Defrost - fridge/freezer	Automatic	Automatic	Manual
Glass shelves	2		
Full width salad drawer	1		
Dairy compartment with lid	1		
No. of door shelves	2		
Egg tray	2		
Fridge light	•		
No. of full width drawers		3	3
No. of half width drawers		1	1
Door opening	Right & Reversible	Right & Reversible	Right & Reversible
Design			
Stainless steel	S71700TSX0		A81000TNX0
White	S71700TSW0	A81000TNW0	
Stainless steel matching Fridge or Freezer	A81000TNX0		A71101TSX0
White matching Fridge or Freezer	A81000TNW0	S71700TSW0	
Product Dimensions			
Height (mm)	850	850	850
Width (mm)	595	595	595
Depth (inc. handle) (mm)	635	635	635
Performance			
Annual energy consumption kWh	94	188	145
Energy efficiency class	A++	A+	A++
Energy efficiency index %	32.7	41.9	32.8
Climate class	SN-N-ST-T	SN-N-ST-T	SN-N-ST-T
Noise dB (A)	38	42	39
Freezing capacity kg/24hr		9	14
Power cut safe rising time hr		13	24
Minimum ambient temperature °C	10	10	10

Overviews



SCZ71800F0 SCT81800S0 SCN71800S1 SCT81900S0 SCT71900S0

Main Features					
LCD Touch display	•	•			
Electronic temperature control			•	•	•
Adjustable thermostat knob					
Minute minder	•	•			
Display child lock	•	•	•	•	•
Holiday setting	•	•	•	•	•
Coolmatic	•	•	•	•	•
Frostmatic	•	•	•	•	•
High temperature warning alarm	•	•	•	•	•
Door open alarm	•	•	•		
Fridge Features					
Gross capacity fridge (litres/cubic feet)	139/4.9	161/5.7	164/5.8	230/8.1	230/8.1
Net capacity fridge (litres/cubic feet)	133/4.7	158/5.6	162/5.7	228.8	228.8
Gross capacity Longfresh chill zone (litres/cubic feet)	60/2.1				
Net capacity Longfresh chill zone (litres/cubic feet)	73/2.6				
Defrost - fridge	Automatic	Automatic	Automatic	Automatic	Automatic
Dynamic air technology/multi airflow cooling fan	/•	/•	/•	•/	•/
Telescopic Longfresh chill drawers	2				
Telescopic meat/fish drawer					
Glass shelves (full depth)	2	2	2	3	3
Glass shelves (half depth)	2	2	2	2	2
2 half width salad drawers with full width glass cover	•	•	•		
Full width transparent salad drawers with glass lid				•	•
Humidity control (for chill zone)	•				
Dairy compartment with lid	•	•	•	•	•
Full width door shelves	2	2	2	2	2
Half width sliding shelf	•	•	•	•	•
Egg tray	2	2	2	2	2
Fridge light/soft rise LED lighting	/•	/•	/•	/•	/•
FreshBox Chiller Drawer					
Freezer Features					
Gross capacity freezer (litres/cubic feet)	108/3.8	108/3.8	91/3.2	75/2.6	75/2.6
Net capacity freezer (litres/cubic feet)	88/3.1	88/3.1	78/2.8	64/2.3	64/2.3
Defrost - freezer	Automatic	Automatic	Automatic	Automatic	Automatic
Freezer compartment (drawers)	4	4	4	3	3
Ice packs (accumulators)	2	2	2	2	2
Dimensions					
Height (mm)	1772	1772	1772	1842	1842
Width (mm)	540	540	540	540	540
Depth (mm)	547	560	547	560	560
Net weight (kg)	59.5	59.5	59.5	59.5	57.5
Built-in dimensions					
Built-in height (mm)	1780	1780	1780	1850	1850
Built-in width (mm)	560	560	560	560	560
Built-in depth (mm)	550	550	550	552	552
Door fixing	Sliding hinge	Sliding hinge	Sliding hinge	Sliding hinge	Sliding hinge
Performance					
Annual energy consumption kWh	230	241	311	244	326
Energy efficiency class	A++	A++	A+	A++	A+
Energy efficiency index %	32.9	32.9	43.8	32.85	43.9
Climate class	SN-N-ST-T	SN-N-ST-T	SN-N-ST-T	SN-N-ST-T	SN-N-ST-T
Noise dB (A)	38	39	38	39	39
Freezing capacity kg/24hr	10	10	10	8	8
Power cut safe rising time hr	25	25	25	21	21
Minimum ambient temperature °C	10	10	10	10	10
Other					
Reversible door opening	•	•	•	•	•
Fridge Freezer Split	50 : 50	50 : 50	50 : 50	60 : 40	70 : 30

Overviews



SCT71800S1

SCS71800F0

SCS51800F0

SCS51810S0

Main Features				
LCD Touch display	•	•		
Electronic temperature control			•	•
Adjustable thermostat knob				
Minute minder	•	•		
Display child lock	•	•		
Holiday setting	•	•		
Coolmatic	•	•		
Frostmatic	•	•	•	
High temperature warning alarm	•	•		
Door open alarm	•	•		
Fridge Features				
Gross capacity fridge (litres/cubic feet)	202/7.1	209/7.4	209/7.4	173/6.1
Net capacity fridge (litres/cubic feet)	200/7	205/7.2	205/7.2	170/3.9
Gross capacity Longfresh chill zone (litres/cubic feet)				
Net capacity Longfresh chill zone (litres/cubic feet)				
Defrost - fridge	Automatic	Automatic	Automatic	Automatic
Dynamic air technology/multi airflow cooling fan	• /			
Telescopic Longfresh chill drawers				
Telescopic meat/fish drawer				
Glass shelves (full depth)	2	3	4	3
Glass shelves (half depth)	2	2		
2 half width salad drawers with full width glass cover	•	•	•	•
Full width transparent salad drawers with glass lid				
Humidity control (for chill zone)				
Dairy compartment with lid	•	•	•	•
Full width door shelves	3	3	3	2
Half width sliding shelf	•	•	•	•
Egg tray	2	2	2	2
Fridge light/soft rise LED lighting	/•	/•	• /	• /
FreshBox Chiller Drawer	•			
Freezer Features				
Gross capacity freezer (litres/cubic feet)	78/2.8	76/2.7	76/2.7	110/3.9
Net capacity freezer (litres/cubic feet)	63/1.9	70/2.5	70/2.5	92/3.2
Defrost - freezer	Automatic	Manual	Manual	Manual
Freezer compartment (drawers)	3	3	3	4
Ice packs (accumulators)	2	2		2
Dimensions				
Height (mm)	1772	1764	1764	1772
Width (mm)	540	556	556	540
Depth (mm)	547	542	542	547
Net weight (kg)	57.5	60	62	57.5
Built-in dimensions				
Built-in height (mm)	1850	1780	1780	1780
Built-in width (mm)	560	560	560	560
Built-in depth (mm)	550	550	550	550
Door fixing	Sliding hinge	Door on Door	Door on Door	Sliding hinge
Performance				
Annual energy consumption kWh	297	307	307	298
Energy efficiency class	A+	A+	A+	A+
Energy efficiency index %	41.9	43.8	43.8	43.8
Climate class	SN-N-ST-T	SN-N-ST-T	SN-N-ST-T	SN-N-ST
Noise dB (A)	39	35	36	36
Freezing capacity kg/24hr	10	13	4	10
Power cut safe rising time hr	21	24	20	24
Minimum ambient temperature °C	10	10	10	10
Other				
Reversible door opening	•	•	•	•
Fridge Freezer Split	70 : 30	70 : 30	70 : 30	50 : 50

Overviews



SKS58200F0

SKS58240F0

AGN58210F0

AGS58200F0

Features				
LCD Touch display				
Electronic temperature control				
Adjustable thermostat knob	•	•	•	•
Holiday setting				
Minute minder				
Display child lock				
Coolmatic				
Frostmatic				
High temperature warning alarm				
Door open warning alarm				
Electronic control				
Fridge Features				
Gross capacity fridge (litres/cubic feet)	140/4.9	105/3.7		
Net capacity fridge (litres/cubic feet)	136/4.8	100/3.5		
Defrost - fridge	Automatic	Automatic		
Dynamic air technology				
Glass shelves (full depth)	3	2		
Glass shelves (half depth)				
2 half width salad drawers with full width glass cover				
Full width salad drawer with full width glass cover				
Full width transparent drawers with glass lid				
Deep salad drawer with telescopic runners				
Dairy compartment with lid	•	•		
Full width door shelves	1	1		
Half width sliding shelf	1	1		
Egg tray	•	•		
Fridge light/soft rise LED lighting	•/	•/		
Freezer Features				
Gross capacity freezer (litres/cubic feet)		17/0.6	90/3.1	108/3.8
Net capacity freezer (litres/cubic feet)		17/0.6	87/3.1	98/3.4
Defrost - freezer		Manual	Automatic	Manual
Frostmatic			•	•
Freezer compartment (drawers/flaps)		1	3	3
Ice packs			2	2
High temperature warning alarm			•	•
Door open warning alarm			•	•
Dimensions				
Height (mm)	815	815	815	815
Width (mm)	596	596	596	596
Depth (mm)	550	550	550	550
Net weight (kg)	33	35	36	35
Built-in dimensions				
Built-in height (mm)	820	820	820	820
Built-in width (mm)	600	600	600	600
Built-in depth (mm)	550	550	550	550
Door fixing	Door on Door	Door on Door	Door on Door	Door on Door
Performance				
Annual energy consumption kWh	118	176	192	189
Energy efficiency class	A+	A+	A+	A+
Energy efficiency index %	41.7	41.9	41.7	41.9
Climate class	SN-N-ST-T	SN-N-ST	SN-N-ST-T	SN-N-ST-T
Noise dB (A)	36	38	41	38
Freezing capacity kg/24hr		2.5	12	18
Power cut safe rising time hr		13	13	29
Minimum ambient temperature °C	10	10	10	10
Other				
Reversible door opening	•	•	•	•
Adjustable feet	•	•	•	•
Matching fridge/freezer	AGS58200F0/AGN58200F0		SKS58200F0	SKS58200F0

Overviews



SKS58840S2



SKS58800S2



AGS58800S0

Features			
LCD Touch display			
Electronic temperature control			
Adjustable thermostat knob			
Holiday setting			
Minute minder			
Display child lock			
Coolmatic		•	
Frostmatic	•		•
High temperature warning alarm			•
Door open warning alarm			
Electronic control	•	•	•
Fridge Features			
Gross capacity fridge (litres/cubic feet)	114/4	147/5.2	
Net capacity fridge (litres/cubic feet)	112/4	146/5.1	
Defrost - fridge	Automatic	Automatic	
Dynamic air technology			
Glass shelves (full depth)	2	3	
Glass shelves (half depth)			
2 half width salad drawers with full width glass cover			
Full width salad drawer with full width glass cover	•	•	
Full width transparent salad drawers with glass lid			
Deep salad drawer with telescopic runners			
Dairy compartment with lid	•	•	
Full width door shelves	2	2	
Half width sliding shelf	•	•	
Egg tray	2	2	
Fridge light/soft rise LED lighting	• /	/ •	
Freezer Features			
Gross capacity freezer (litres/cubic feet)	14/0.5		110/3.9
Net capacity freezer (litres/cubic feet)	14/0.5		94/3.3
Defrost - freezer	Manual		Manual
Frostmatic			
Freezer compartment (drawers/flaps)	1		4
Ice packs			
High temperature warning alarm			
Door open warning alarm			
Dimensions			
Height (mm)	873	873	873
Width (mm)	540	540	540
Depth (mm)	549	549	549
Net weight (kg)	34	35	34
Built-in dimensions			
Built-in height (mm)	880	880	880
Built-in width (mm)	560	560	560
Built-in depth (mm)	550	550	550
Door fixing	Sliding hinge	Sliding hinge	Sliding hinge
Performance			
Annual energy consumption kWh	189	123	207
Energy efficiency class	A+	A+	A+
Energy efficiency index %	41.9	41.8	43.9
Climate class	SN-N-ST	SN-N-ST-T	SN-N-ST-T
Noise dB (A)	38	38	36
Freezing capacity kg/24hr	2		16
Power cut safe rising time hr	12		20
Minimum ambient temperature °C	10	10	10
Other			
Reversible door opening	•	•	•
Adjustable feet			
Matching fridge/freezer		AGS5880S0	SKS58800S2

Overviews



SKS81240F0



SKS71200F0



AGN71200F0



SKD71800F0

Features				
LCD Touch display	•	•	•	•
Electronic temperature control				
Adjustable thermostat knob				
Holiday setting				
Minute minder		•		•
Display child lock	•	•	•	•
Coolmatic	•	•	•	•
Frostmatic	•	•		•
High temperature warning alarm	•		•	
Door open warning alarm			•	
Electronic control	•	•	•	•
Fridge Features				
Gross capacity fridge (litres/cubic feet)	189/6.7	225/7.9		332/11.72
Net capacity fridge (litres/cubic feet)	185/6.5	222/7.8		330/11.65
Defrost - fridge	Automatic	Automatic		Automatic
Dynamic air technology				•
Glass shelves (full depth)	2	3		4
Glass shelves (half depth)	2	2		2
2 half width salad drawers with full width glass cover	•	•		
Full width salad drawer with full width glass cover				
Full width transparent drawers with glass lid				
Deep salad drawer with telescopic runners				
Dairy compartment with lid	•	•		•
Full width door shelves	3	3		4
Half width sliding shelf	•	•		•
Egg tray	2	2		2
Fridge light/soft rise LED lighting	/•	/•		/
Freezer Features				
Gross capacity freezer (litres/cubic feet)	17/0.6		135/4.8	
Net capacity freezer (litres/cubic feet)	17/0.6		122/4.3	
Defrost - freezer	Manual		Automatic	
Frostmatic				
Freezer compartment (drawers/flaps)	1		4 / 1	
Ice packs			2	
High temperature warning alarm				
Door open warning alarm				
Dimensions				
Height (mm)	1219	1219	1213	1773
Width (mm)	556	556	540	540
Depth (mm)	550	550	547	542
Net weight (kg)		44	43	60.5
Built-in dimensions				
Built-in height (mm)	1225	1225	1225	1780
Built-in width (mm)	560	560	560	560
Built-in depth (mm)	550	550	550	550
Door fixing	Door on Door	Door on Door	Door on Door	Door on Door
Performance				
Annual energy consumption kWh	181	140	245	145
Energy efficiency class	A++	A+	A+	A+
Energy efficiency index %	32.9	43.8	43.8	43.9
Climate class	SN-N-ST-T	SN-N-ST-T	SN-N-ST-T	SN-N-ST
Noise dB (A)	34	33	38	34
Freezing capacity kg/24hr	2		20	
Power cut safe rising time hr	12		24	
Minimum ambient temperature °C	10	10	10	10
Other				
Reversible door opening	•	•	•	•
Adjustable feet				
Matching fridge/freezer		AGN71200F0	SKS71200F0	AGN71800F0

Overviews



AGN71800F0



SKS61840S1

Features		
LCD Touch display	•	
Electronic temperature control		•
Adjustable thermostat knob		
Holiday setting		
Minute minder	•	
Display child lock	•	
Coolmatic		
Frostmatic	•	•
High temperature warning alarm	•	
Door open warning alarm	•	
Electronic control		
Fridge Features		
Gross capacity fridge (litres/cubic feet)		271/9.6
Net capacity fridge (litres/cubic feet)		268/9.5
Defrost - fridge		Automatic
Dynamic air technology		
Glass shelves (full depth)		4
Glass shelves (half depth)		
2 half width salad drawers with full width glass cover		
Full width salad drawer with full width glass cover		
Full width transparent salad drawers with glass lid		
Deep salad drawer with telescopic runners		•
Dairy compartment with lid		•
Full width door shelves		4
Half width sliding shelf		•
Egg tray		2
Fridge light/soft rise LED lighting		/•
Freezer Features		
Gross capacity freezer (litres/cubic feet)	220/7.8	27/1.0
Net capacity freezer (litres/cubic feet)	208/7.3	26/0.9
Defrost - freezer	Automatic	Manual
Frostmatic		
Freezer compartment (drawers/flaps)	5 / 2	1
Ice packs	2	
High temperature warning alarm		
Door open warning alarm		
Dimensions		
Height (mm)	1773	1772
Width (mm)	540	540
Depth (mm)	542	547
Net weight (kg)	61	61.5
Built-in dimensions		
Built-in height (mm)	1780	1780
Built-in width (mm)	560	560
Built-in depth (mm)	550	550
Door fixing	Door on Door	Sliding hinge
Performance		
Annual energy consumption kWh	307	279
Energy efficiency class	A+	A+
Energy efficiency index %	43.9	41.9
Climate class	SN-N-ST-T	SN-N-ST-T
Noise dB (A)	38	35
Freezing capacity kg/24hr	20	3
Power cut safe rising time hr	21	20
Minimum ambient temperature °C	10	10
Other		
Reversible door opening	•	•
Adjustable feet		
Matching fridge/freezer	SKD71800F0/ Longfresh SKZ71800F0	

Overviews



SKZ71800F0

Main Features	
Control	
LCD touch display	•
Minute minder	•
Display child lock	•
Coolmatic	•
Frostmatic	
High temperature warning alarm	
Door open warning alarm	•
Fridge Features	
Gross capacity fridge (litres/cubic feet)	224/7.9
Net capacity fridge (litres/cubic feet)	216/7.6
Gross capacity longfresh chill zone (litres/cubic feet)	78/2.8
Net capacity longfresh chill zone (litres/cubic feet)	78/2.8
Defrost - fridge	Automatic
Multi-airflow cooling	•
Telescopic longfresh chill drawers	2
Telescopic meat/fish drawer	•
Glass shelves (full depth)	3
Glass shelves (half depth)	2
Humidity control (for chill zone)	•
Dairy compartment with lid	•
Full width door shelves	3
Half width sliding shelf	•
Air purifier	•
Egg tray	2
Soft rise LED lighting	•
Freezer Features	
Gross capacity freezer (litres/cubic feet)	
Net capacity freezer (litres/cubic feet)	
Defrost - freezer	
Freezer compartment (drawers/flaps)	
Ice packs	
Dimensions	
Height (mm)	1773
Width (mm)	540
Depth (mm)	542
Net weight (kg)	61.5
Built-in Dimensions	
Built-in height (mm)	1780
Built-in width (mm)	560
Built-in depth (mm)	550
Door fixing	Door on Door
Performance	
Annual energy consumption kWh	172
Energy efficiency class	A+
Energy efficiency index %	43.9
Climate class	SN-N-ST
Noise dB (A)	38
Freezing capacity kg/24hr	
Power cut safe rising hr	
Minimum ambient temperature °C	10
Other	
Reversible door opening	•
Matching Freezer	AGN71800F0



Overviews


L61470BI

L61271BI

Main Features		
Display	Digit display	Digit display
Wash load	7	7
Spin speed	1400	1200
Stains option	•	•
Extra rinse option	•	•
Super quick option	•	•
Delay start	•	•
Cottons	•	•
Cottons with prewash	•	•
Synthetics	•	•
Synthetics Easy Iron	•	•
Delicate	•	•
Wool	•	•
Sport intensive	•	•
Delicate rinses	•	•
Jeans	•	•
Miniprogramme 30	•	•
Cotton economy	•	•
Performance		
Declared programmes	Std cotton 60 half & full load, Std cotton 40 half load	Std cotton 60 half & full load, Std cotton 40 half load
Energy efficiency class	A++	A++-20%
Energy efficiency index (%)	49.6	49.6
Spin drying efficiency label	B	B
Annual energy consumption (kWh)	190	190
Annual water consumption (litres)	10469	10469
Maximum spin speed rpm	1400	1200
Washing noise level (dB(A) re 1pw)	56	56
Spin noise level (dB(A) re 1pw)	74	72
Residual humidity (%)	52	53
Stand-by power (W)	1.9	1.9
Off mode power (W)	0.1	0.1
Left-on mode power (W)	0.98	0.98
Left-on mode duration (Min)	5	5
Washing performance	A	A
Performance, programme Standard cotton 60°C, full load		
Load (kg)	7	7
Energy (kWh)	1.01	1.05
Water (litres)	52	52
Programme duration (Min)	180	180
Product Dimensions		
Height (mm)	820	820
Width (mm)	596	596
Depth (mm)	544	544
Aperture dimensions		
Height (mm)	825-870	825-870
Width (mm)	600	600
Depth (mm)	600	600

Overviews



L61470WDBI



L61271WDBI

Main Features		
Display	Digit display	Digit display
Wash load	7	7
Dry load	4	4
Spin speed	1400	1200
Stains option	•	•
Extra rinse option	•	•
Super quick option	•	•
Delay start	•	•
Drying time	•	•
Cottons	•	•
Cottons with prewash	•	•
Synthetics	•	•
Synthetics Easy Iron	•	•
Delicate	•	•
Wool	•	•
Delicate rinses	•	•
Synthetic dry	•	•
Cottons dry	•	•
Freshen up	•	•
Cottons economy	•	•
Performance		
Energy efficiency class	B	C
Energy consumption wash + dry (kWh)	5.67	6.51
Energy consumption washing (kWh)	1.05	1.05
Washing performance	A	A
Water consumption washing + drying (litres)	99	125
Max spin speed rpm	1400	1200
Residual humidity (%)	52	54
Stand-by power (W)	1.9	1.9
Off mode power (W)	0.1	0.1
Washing noise (dB(A) re 1pw)	56	56
Spinning noise (dB(A) re 1pw)	74	72
Drying noise (dB(A) re 1pw)	62	62
Washing Only		
Annual energy consumption (kWh)	210	210
Annual water consumption (litres)	9800	9800
Washing & Drying		
Annual energy consumption (kWh)	1134	1302
Annual water consumption (litres)	19800	25000
Performance, programme Standard cotton 60°C, full load		
Load (kg)	7	7
Energy (kWh)	1.05	1.05
Water (litres)	49	49
Programme duration (Min)	180	180
Product Dimensions		
Height (mm)	820	820
Width (mm)	596	596
Depth (mm)	544	544
Aperture dimensions		
Height (mm)	825-870	825-870
Width (mm)	600	600
Depth (mm)	600	600

Overviews


L88409FL2

L98699FL

L87680FL

L76485FL

Main Features	L88409FL2	L98699FL	L87680FL	L76485FL
Display	Medium LCD	LogiControl™ touch display	LogiControl™ display	Medium LCD
Weight sensor with detergent recommendation		•		
Advanced washing technology	•	•	•	
OptiSense wash system	•	•	•	•
ProTex drum	•	•	•	•
Drum light		•		
Large porthole	•	•	•	•
Wide door opening	•	•	•	•
Adjustable steam level		•		
Steam refresh	•	•	•	•
Steam de-creasing	•	•	•	•
Stains option	•	•	•	•
Extra rinse option	•	•	•	•
Time save option	•	•	•	•
Delay start option	20hrs	20hrs	20hrs	20 hrs
Prewash option	•	•	•	•
Favourite programme memory option	•	•	•	•
Cottons programme	•	•	•	•
Synthetics programme	•	•	•	•
Easy iron programme	•	•	•	•
Wool plus programme	•	•	•	
Anti Allergy programme	•	•	•	
20 Min 3kg programme	•	•	•	•
Super Eco programme	•	•	•	•
Aqua control and alarm	•	•	•	•
Performance				
Declared programmes	Std cotton 60 half & full load, Std cotton 40 half load	Std cotton 60 half & full load, Std cotton 40 half load	Std cotton 60 half & full load, Std cotton 40 half load	Std cotton 60 half & full load, Std cotton 40 half load
Energy efficiency class	A+++ -20%	A+++ -20%	A+++ -10%	A+++ -10%
Energy efficiency index (%)	36.1	31.9	38.9	37.9
Spin drying efficiency label	B	A	A	B
Annual energy consumption (kWh)	226	152	163	162
Annual water consumption (litres)	13800	10999	9899	11031
Maximum spin speed rpm	1400	1600	1600	1400
Washing noise level (dB(A) re 1pw)	49	47	49	51
Spin noise level (dB(A) re 1pw)	74	73	75	75
Residual humidity (%)	52	43	43	52
Stand-by power (W)	1.0	1.0	1.0	1.0
Off mode power (W)	0.05	0.05	0.05	0.48
Left-on mode power (W)	0.05	0.05	0.05	
Left-on mode duration (Min)	5	5	5	
Auto Off	•	•	•	
Washing performance	A	A	A	A
Performance, programme standard cotton 60°C, full load				
Load (kg)	10	9	8	8
Energy (kWh)	1.13	0.9	0.89	0.9
Water (litres)	69	63	57	58
Programme duration (Min)	249	233	225	208
Product Dimensions				
Height (mm)	850	850	850	850
Width (mm)	600	600	600	600
Depth (excluding knob and door depth) (mm)	605	605	605	605
Max depth (including knob and door depth) (mm)	639	639	639	639


L75670FL
L76475FL

Main Features		
Display	Medium LCD	Medium LCD
Weight sensor with detergent recommendation		
Advanced washing technology		
OptiSense wash system	•	•
ProTex drum	•	•
Drum light		
Large porthole	•	•
Wide door opening	•	•
Adjustable steam level		
Steam refresh		
Steam de-creasing		
Stains option	•	•
Extra rinse option	•	•
Time save option	•	•
Delay start option	20hrs	20hrs
Prewash option	•	•
Favourite programme memory option		
Cottons programme	•	•
Synthetics programme	•	•
Easy iron programme	•	•
Wool plus programme	•	
Anti Allergy programme		
20 Min 3kg programme	•	•
Super Eco programme	•	•
Aqua control and alarm	•	•
Performance		
Declared programmes	Std cotton 60 half & full load, Std cotton 40 half load	Std cotton 60 half & full load, Std cotton 40 half load
Energy efficiency class	A+++	A+++ -10%
Energy efficiency index (%)	42.9	38.0
Spin drying efficiency label	A	B
Annual energy consumption (kWh)	164	145
Annual water consumption (litres)	9995	8399
Maximum spin speed rpm	1600	1400
Washing noise level (dB(A) re 1pw)	51	49
Spin noise level (dB(A) re 1pw)	77	75
Residual humidity (%)	43	52
Stand-by power (W)	1.0	1.0
Off mode power (W)	0.48	0.48
Left-on mode power (W)	0.48	0.48
Left-on mode duration (Min)	5	5
Auto Off		
Washing performance	A	A
Performance, programme standard cotton 60°C, full load		
Load (kg)	7	7
Energy (kWh)	0.91	0.72
Water (litres)	49	45
Programme duration (Min)	205	232
Product Dimensions		
Height (mm)	850	850
Width (mm)	600	600
Depth (excluding knob and door depth) (mm)	605	522
Max depth (including knob and door depth) (mm)	639	555

Overviews


T96699IH
T86580IH
T86280IC
T76485AH

Main Features	T96699IH	T86580IH	T86280IC	T76485AH
Display	LogiControl™ display	LogiControl™ display	LogiControl™ display	Medium LCD
Dry capacity (Kg)	9	8	8	8
Type of dryer	Heat pump condenser	Heat pump condenser	Condenser	Heat pump condenser
ProTex soft drum	•	•	•	•
Drum light	•	•	•	•
Delay start	•	•	•	•
Programme memory option	•			
Sensor drying	•	•	•	•
Timed drying option	•	•	•	•
Long anti-crease option	•	•	•	•
Bed linen programme	•		•	•
Cottons - cupboard dry	•	•	•	•
Cottons - extra dry	•	•	•	•
Cottons - iron dry	•	•	•	•
Delicate	•	•	•	
Synthetics - cupboard dry	•	•	•	•
Synthetics - extra dry	•	•	•	•
Synthetics - iron dry	•	•	•	•
Easy iron plus programme	•	•	•	•
Jeans	•	•		•
Extra quick mixed	•	•	•	•
Wool programme	•	•		•
Silk	•	•	•	•
Sports	•	•		•
Active wear	•	•	•	•
Performance				
Energy efficiency class A-G	A-50%	A-50%	B	A-40%
Energy consumption (kWh/cycle)	2.05	1.92	4.48	2.1
Average annual energy consumption (kWh/year)	102.3	108.3	271.4	121.60
Drum volume (ltrs)	118	118	118	118
Inverter motor	•	•	•	
Stand-by power (W)	1.9	1.9	1.9	1.9
Off mode power (W)	0.1	0.1	0.1	0.1
Drying noise, dB(A) re 1pw	65	65	62	65
Product Dimensions				
Height (mm)	850	850	850	850
Width (mm)	600	600	600	600
Depth (including knob and door depth) (mm)	630	630	630	630
Max depth (including knob and door depth) (mm)	644	644	644	644

Overviews


T75280AC

T65270AC

T65170AV

Main Features			
Display	Medium LCD	Small LCD	
Dry capacity (Kg)	8	7	7
Type of dryer	Condenser	Condenser	Vented
ProTex soft drum	•	•	•
Drum light			
Delay start	•	•	•
Programme memory option			
Sensor drying	•	•	•
Timed drying option	•	•	•
Long anti-crease option	•	•	•
Bed linen programme	•	•	•
Cottons - cupboard dry	•	•	•
Cottons - extra dry	•	•	•
Cottons - iron dry	•	•	•
Delicate	•	•	•
Synthetics - cupboard dry	•	•	•
Synthetics - extra dry	•	•	•
Synthetics - iron dry	•	•	•
Easy iron plus programme	•	•	•
Jeans	•	•	•
Extra quick mixed	•		
Wool programme	•		•
Silk			
Sports	•		
Active wear	•		
Performance			
Energy efficiency class A-G	B	B	C
Energy consumption (kWh/cycle)	4.48	3.92	3.9
Average annual energy consumption (kWh/year)	268.8	265.8	263.1
Drum volume (ltrs)	118	118	108
Inverter motor			
Stand-by power (W)	1.9	1.9	1.9
Off mode power (W)	0.1	0.1	0.1
Drying noise, dB(A) re 1pw	64	64	64
Product Dimensions			
Height (mm)	850	850	850
Width (mm)	600	600	600
Depth (including knob and door depth) (mm)	580	580	630
Max depth (including knob and door depth) (mm)	644	644	644

Overviews


L87695WD

L77685WD

L75480WD

Main Features			
Display	Logiccontrol™ display	Large display	Large display
Wash load (kg)	9	8	8
Dry load (kg)	7	6	6
Spin speed (rpm)	1600	1600	1400
Woolmark certification	GOLD		
Inverter motor	•	•	•
Advanced washing technology	•	•	•
OptiSense wash system	•	•	•
Protex drum	•	•	•
Large porthole	•	•	•
Wide door opening	•	•	•
Steam refresh	•	•	•
Steam dewrinkler	•		
Stains option	•		
Extra rinse option	•		
Time save option	•	•	•
Delay start option	•	•	•
Prewash option	•		
Drying time	•	•	•
Drying level	•		•
Cottons programme	•	•	•
Cottons with prewash programme		•	•
Synthetics with prewash programme		•	•
Synthetics Easy iron programme	•	•	•
Delicate programme	•	•	•
Wool plus programme	•	•	•
Quick 20min 3kg wash programme	•	•	•
Wool dry programme	•	•	•
Synthetics dry programme	•	•	•
Cotton dry programme	•	•	•
Quick wash 59 min wash dry programme	•	•	•
Super Eco programme	•	•	•
Cotton economy programme	•	•	•
Aqua control and alarm	•	•	•
Dimensions			
Height	850	850	850
Width (mm)	600	600	600
Depth (mm)	605	605	605
Depth Max (mm)	639	639	639
Electrical and water connection			
Water fill	Cold	Cold	Cold
Fuse rating (A)	13	13	13
Connected load (w)	2200	2200	2200
Performance			
Energy efficiency class	A	A	B
Energy consumption wash + dry (kWh)	6.12	5.44	6.48
Energy consumption washing (kWh)	1.05	1.04	1.04
Washing performance	A	A	A
Water consumption washing + drying (L)	112	97	99
Max spin speed (rpm)	1600	1600	1400
Residual humidity (%)	44	44	53
Stand-by power (w)	0.6	0.6	0.6
Off mode power (w)	0.6	0.6	0.6
Washing noise dB(A) re 1pw	49	50	51
Spinning noise dB(A) re 1pw	75	79	75
Drying noise dB(A) re 1pw	61	63	63
Annual energy consumption (kWh)			
Annual water consumption (L)	210	208	208
Washing & Drying	12600	11800	11800
Annual energy consumption (kWh)	1224	1088	1296
Annual water consumption (L)	22400	19400	19800
Performance, programme			
Standard cotton 60°C, full load			
Load (kg)	9	8	8
Energy (kWh)	1.05	1.04	1.04
Water (L)	63	59	59
Programme duration (min)	230	225	225



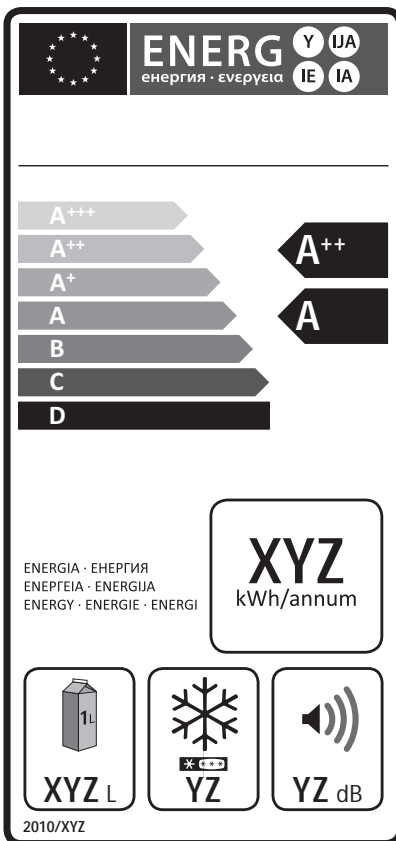
Energy Information / EU Energy Efficiency Information

This scheme, which covers refrigerators, freezers, washing machines, tumble dryers, dishwashers and electric ovens is designed to offer consumers a standardised method of choosing the most energy efficient appliances.

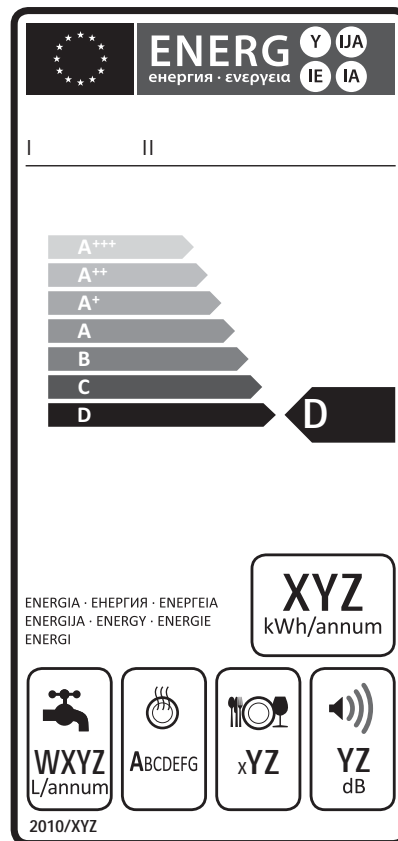
For refrigerators and freezers, as well as stating the energy efficiency class (A+++ - most efficient, 'D' - least efficient) the label also gives the annual electricity consumption (i.e. running cost) freezing capacity, noise level and the usable storage capacity.

For dishwashers, as well as stating the energy efficiency class (A+++ - most efficient, 'D' - least efficient) the label also states the annual water consumption (lts), drying efficiency, place settings and noise level.

For washing machines, as well as stating the energy efficiency class (A+++ - most efficient, 'D' - least efficient) the label also states the annual water consumption (lts), load size (kg), spin speed efficiency and the washing & spinning noise levels.



Example of refrigeration energy label.



Example of dishwasher energy label.



Example of washing machine energy label.

For electric ovens, as well as stating the energy efficiency ('A' - most efficient, 'G' - least efficient), the label also states the energy consumption (in kWh) and the useable volume of the oven. If the oven is a double oven it will carry this information for both ovens.

After Sales Support / Customer Care

WARRANTY

AEG appliances come with a 12 month warranty from date of purchase. When you register your new appliance your warranty will be extended to 2 or 5 years (depending on model). During your warranty period you are protected against the cost of parts, call-out and labour charges. All work is carried out by our national network of approved AEG engineers.

You can register your appliance by completing the warranty registration card enclosed with your appliance, calling our dedicated warranty registration phone number printed on the card, or online at www.aeg.co.uk



For additional peace of mind you have the option to extend your guarantee even further with our AEG Protection Plan. You'll be protected against damage caused by accident from the moment you join and if one of our approved engineers can't fix it, you could receive a brand new replacement. This coverage is provided by our specialist insurers Domestic and General.

To find out more visit www.aeg.co.uk or call **0800 479 0775**

CUSTOMER SERVICE

Should you need to contact us about your product we have a dedicated AEG customer service team to help. Our team is based in the AEG UK head office and can be contacted by phone on **08445 611 611** or via www.aeg.co.uk

LOCAL SERVICE, NATIONWIDE

Our national network of Service Force agents provide product maintenance, genuine parts and repairs for all AEG Major Appliances. Genuine AEG parts ensure you continue to experience the excellent performance you expect from your AEG product.

If you require a visit from one of our agents for your Major Appliance please call our Service Force team on **08445 616 616**.

SERVICE FORCE

AEG Major Appliances
Addington Way
Luton LU4 9QQ
Telephone: 08445 611 611

AEG Major Appliances is a division of Electrolux plc.
Registered in England, No. 2331516.
Registered Office, Addington Way,
Luton LU4 9QQ

AEG Major Appliances,
Long Mile Road
Dublin 12
Tel: 00353 1 4090750

Registered in Ireland, No. 9118.
Registered Office, Long Mile Road, Dublin 12.

www.aeg.co.uk



To get the latest AEG news follow us
on facebook www.facebook.com/aeg

 **AEG**
perfekt in form und funktion