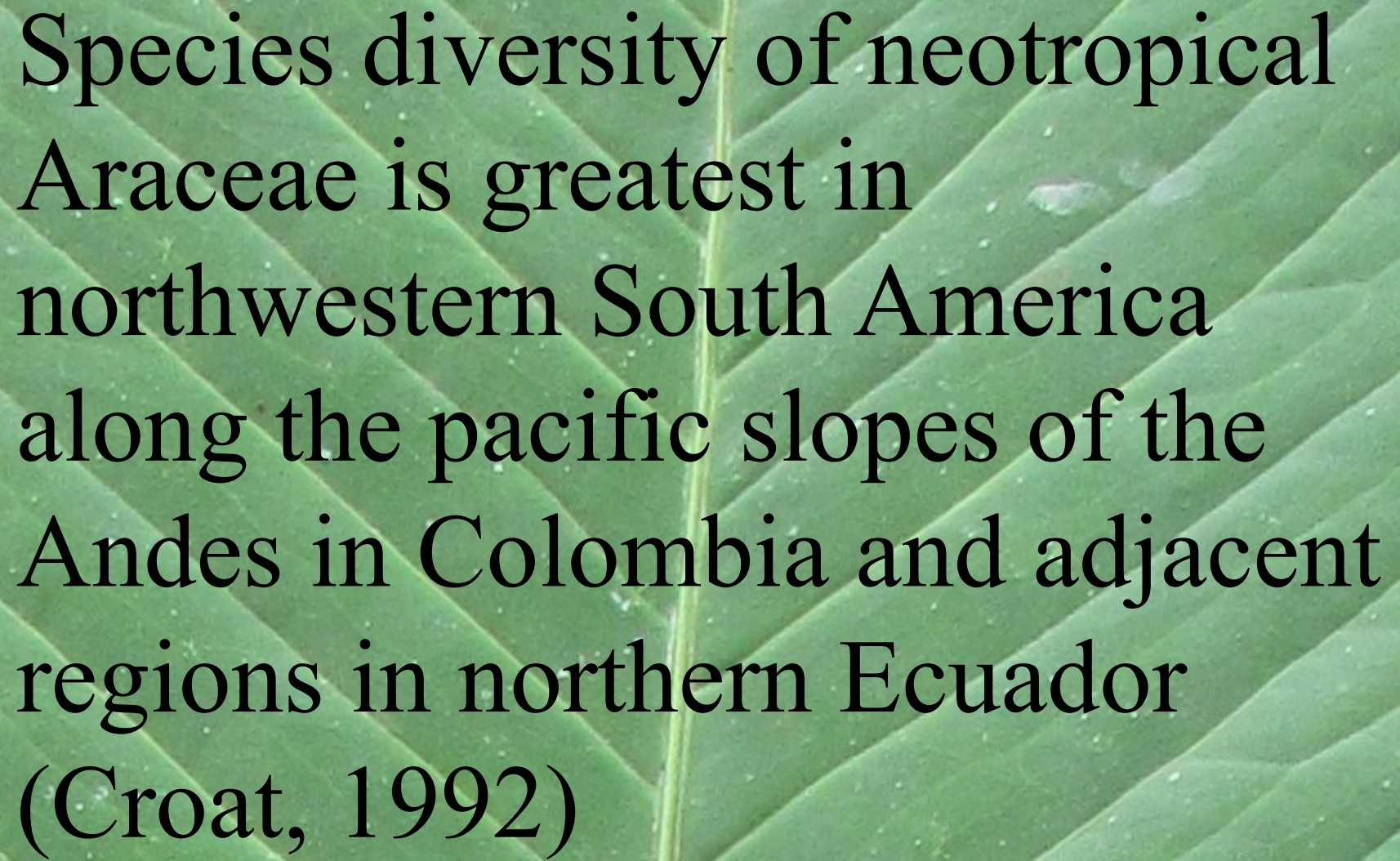


AROIDS OF COLOMBIA

Annual IAS Conference in Miami

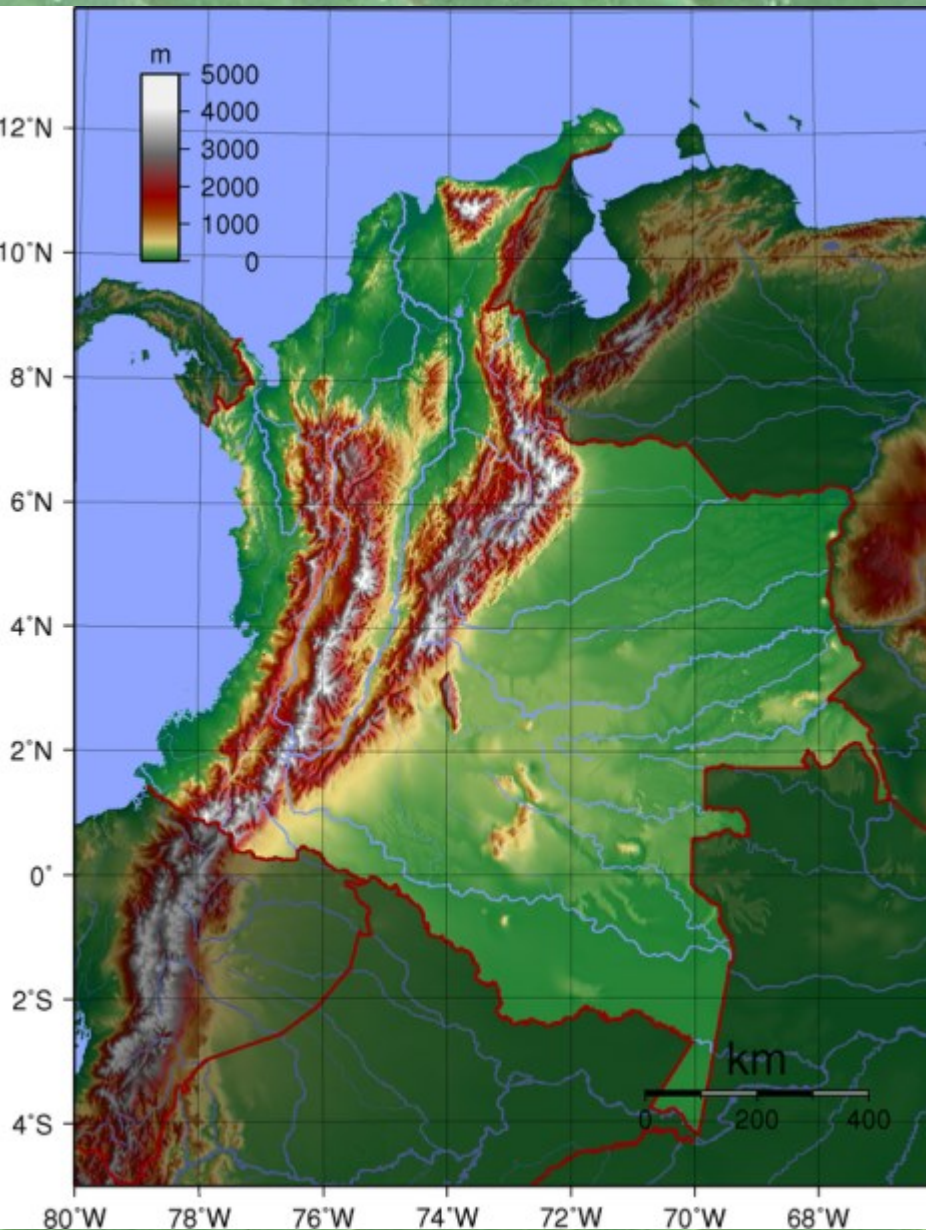
September 20th, 2014

Felipe Alfonso Cardona Naranjo
Herbario Universidad de Antioquia
MEDELLÍN-COLOMBIA



Species diversity of neotropical Araceae is greatest in northwestern South America along the pacific slopes of the Andes in Colombia and adjacent regions in northern Ecuador (Croat, 1992)

COLOMBIA



Three mountain chains

- Western cordillera
- Central cordillera
- Eastern cordillera

Caribbean zone (north)

Pacific zone (west)

Interandean Valleys

Amazon Basin

Savannas (east)

Belolonchium

Anthurium cf. bogotense Schott



Pendent spadix

Occurs in 3 cordilleras

Belolonchium *Anthurium melampyi* Croat



More than 100
cm.
Occurs in Central
cordillera, and
south

Anthurium oxybelium



Highlands
Medium size ca.
40 cm.
Occurs in 3
cordilleras

Belolonchium

ca. 50 cm.
Only north of
the Central
cordillera



Belolonchium



Medium size ca.
50 cm.
Occurs in Central
cordillera

Anthurium cupulispatum Croat & Rodríguez

More than 100
cm.

Occurs in western
central cordillera,
in the south



Belolonchium

Quebrada Caraño, Caquetá

Inflorescences
Lowland
eastern slopes
of the eastern
coldillera
& Amazon
Basin



Belolonchium

Only northern of the Central cordillera



Dactylophyllum

Leaf segments fully free

Anthurium clavigerum



Widespread
in lowlands
Unique
Anthurium
in Dry forest

Anthurium pseudoclavigerum Croat



Leaf 3 lobed
Lowlands in
South, Amazon
basin

Dactylophyllum

Anthurium eminens Schott



Lowland wet
forest, all the
country

Calomystrium

Persistent cataphylls

Anthurium antioquiense Engl.



Lowland
wet forest
endemic

Calomystrium *Anthurium formosum* Schott



-Widespread
Wet forest
from
lowlands to
middle
elevations
-1.5 m.

Calomystrium

Anthurium yarumalense Engl.



Endemic
to Yarumal
Highland

Calomystrium *Anthurium obtusatum* Engl.



Very wet
forest in
central and
western
cordillera

Calomystrium

Species like *A. obtusatum* in Very wet forest in central and western cordillera



Calomystrium

Species like *A. obtusatum* in Very wet forest in central and western cordillera



Calomystrium

Species like *A. obtusatum* in Very wet forest in central and western cordillera



Anthurium nymphaeifolium



Widespread
Wet forest
Lowland and
middle
elevations

Calomystrium



Very wet
forest in
central
cordillera

It has a
green
twisted
spathe

Cardiolonchium

Anthurium crystallinum Linden & André

Lowland forest, limestone formations in
central cordillera



Anthurium cf. Warocqueanum J. Moore

Widespread in wet forest from low to middle elevations



Anthurium cf. Warocqueanum J. Moore



Widespread in
wet forest
from low to
middle
elevations
Central and
western
cordilleras



Anthurium caramantae Engl.

Black Anthurium
Medium size ca.
50 cm.
Occurs in Central
cordillera



Anthurium ochranthum



Lowland
forest
between
Panamá
border and
Ecuador
Choco region

Anthurium nigrescens Engl.

Widespread in highlands of three cordilleras, it usually is growing in open área.



Anthurium sanguineum Engl.

Highlands in the south.

Red spathe and green spadix



Terrestrial species similar to *A. cupreum*
from central cordillera.



Anthurium
versicolor Sodiro

Wet forest specially
in western cordillera



Anthurium (San Carlos)

Eastern slopes of the central cordillera at middle elevations. Long yellow spadix



Anthurium sp.

Very wet
forest in
central
cordillera

It has sunken
veins and
green twisted
spathe



Digitinervium

Thick blades with glandular punctuations and with several pairs of basal veins toward the apex

Anthurium lindae



Very wet forest in central cordillera

Anthurium ovatifolium Engl.

Central cordillera and south, highlands



Pachyneurium

“Bird nests anthuriums”

Anthurium caucavallense (San Carlos)

Lowland and middle elevations in the central and western cordilleras



Anthurium (Porce)

Eastern slopes of the central cordillera at middle elevations. Epiphyte. Wet forest



Anthurium oxycarpum Poepp.



Widespread in wet
forest in amazon
basin

Pachyneurium



South in
lowlands,
between
mountains and
amazon basin

Polyneurium

Thin blades and closely parallel primary veins

Anthurium panduriforme Schott

Western cordillera, Highland form.



Anthurium macphersonii Croat & Oberle



Endemic of
Antioquia.
Western cordillera
and Yarumal



Anthurium longicuspdatum Engl.

9002 C 12
27 3 2006

Anthurium
Uncommon
South
western
cordillera

9002 C 12
27 3 2006

Anthurium cf. urbanii Sodiro

North of the central
cordillera





Anthurium
corrugatum Sodiro

Uncommon
species from
highlands
western and
central
cordillera



Anthurium pulverulentum Sod.

Middle elevations in choco region



27 3 2006



27 3 2006

Semaeophyllum

Leaf blades divided but united at the base.

Anthurium alatum Engl.

Central cordillera.



Tetraspermium

Scandent, long internodes glandular punctate.

Anthurium scandens (Aubl.) Engl.



Widespread
in middle
and high
elevations

Tetraspermium *Anthurium caucanum* Engl.

Common
species, but
may be several
species in three
cordilleras



Xialophyllum

Stems erect or scandent, long internodes, leaves longer than wide.

Anthurium longegeniculatum Engl.



Common
in three
cordilleras

Xialophyllum

Anthurium longegeniculatum Engl.



Anthurium pulchellum Engl.



Wet forest
in three
cordilleras

Anthurium microspadix Schott



Middle
and high
elevations
in three
cordilleras

Xialophyllum

Anthurium myosuroides



Middle and high elevations in three cordilleras



Xialophyllum

Central cordillera, wet premontane forest



Anthurium mindense Sodiro

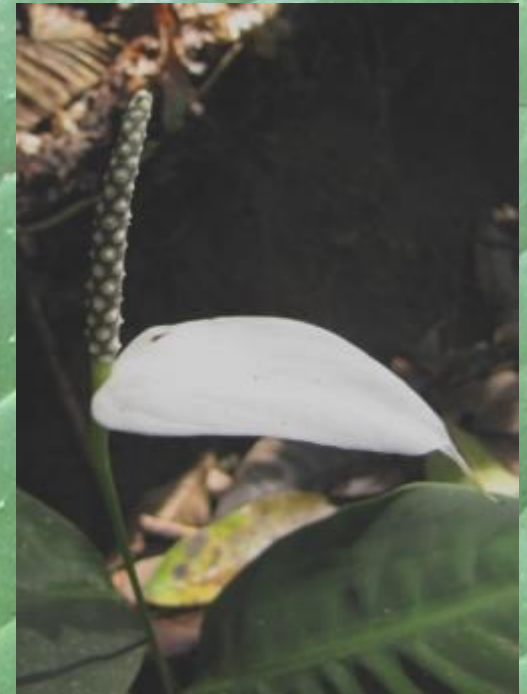


South,
middle
elevations

Spathiphyllum

Interandean valleys, amazon basin and choco region

Spathiphyllum floribundum (Linden & André) N. E. Brown



Interandean
valleys

Spathiphyllum fulvovirens Schott



Interandean valleys, amazon basin and choco region

Spathiphyllum patinii (Hogg) N. E. Brown



Interandean valleys



Spathiphyllum perezii G. S. Bunting



Disjunct distribution between Venezuela and Colombia
Slender spadix

Spathiphyllum laeve Engl.



From central America to choco región.
Tepals united, like a cup

Spathiphyllum friedrichsthali Schott



Choco región, in swampy open areas.
Conical styles

Spathiphyllum lancifolium (Jacq.) Schott



Magdalena river valley.
Conical style

Spathiphyllum phryniifolium Schott



Choco región to
Panamá
Green spathe
Conical style

Spathiphyllum zetekianum



Choco región
to Panamá
Green spathe
Conical style

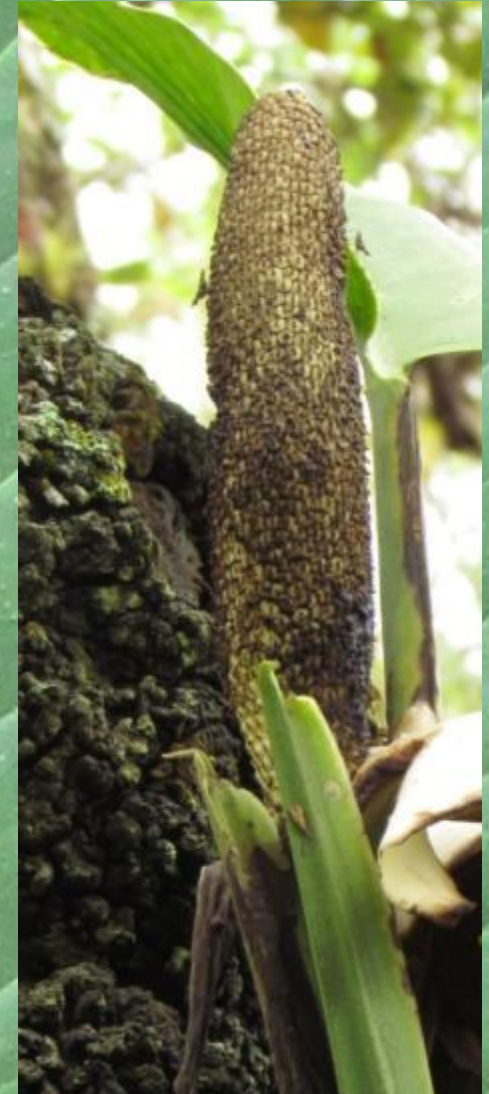
Spathiphyllum nov.



Small new species
from amazon basin

Monstera lechleriana Schott

Interandean valleys, amazon basin and choco region



Rhodospatha latifolia

Interandean valleys, amazon basin and choco region



Rhodospatha moritziana (Schott) Schott

Interandean valleys and choco region



Rhodospatha oblongata Poeppig



Interandean
valleys, amazon
basin and choco
región.

Hemiepiphyte

Rhodospatha monsalvae Croat

Interandean valleys and choco region



Rhodospatha cf. densinervia Engl. & K. Krause

Central cordillera

Highlands



Rhodospatha brachypoda Bunting



Choco región
and Amazon
basin



Stenospermation archeri K. Krause



Stenospermation longispadix Croat



S. weberbaueri Engl.



Stenospermation

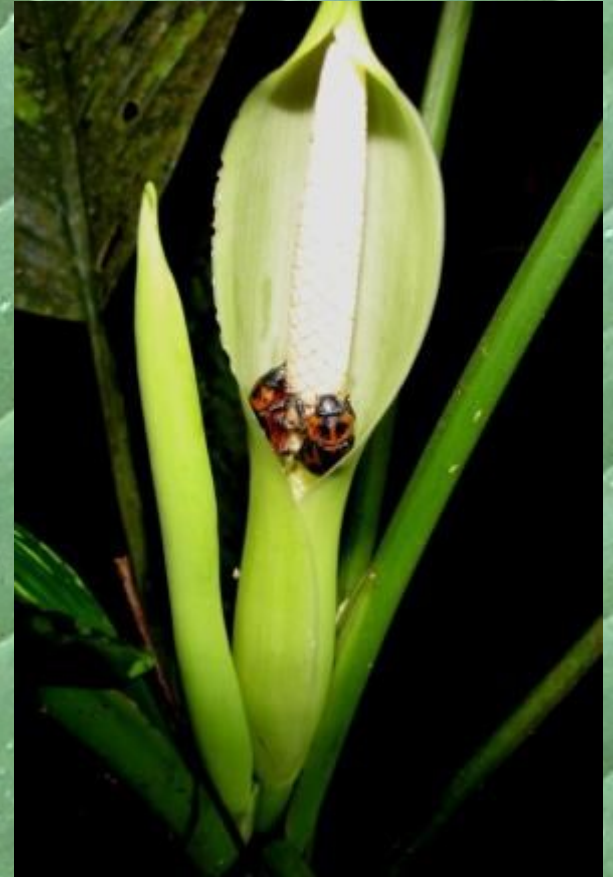


2008/ 6/ 1

Dracontium spruceanum



Dieffenbachia antioquiensis



Dieffenbachia parlatoresi



Dieffenbachia burgeri



Dieffenbachia



Philodendron heleniae Croat



Philodendron danielii Croat & Oberle



Philodendron



Philodendron



Philodendron



Philodendron



Philodendron exile



Philodendron sagittifolium



Philodendron



Philodendron



Philodendron verrucosum Mathieu ex Schott



Philodendron verrucosum Mathieu ex Schott





*Philodendron
genevianum*

Philodendron edwinii



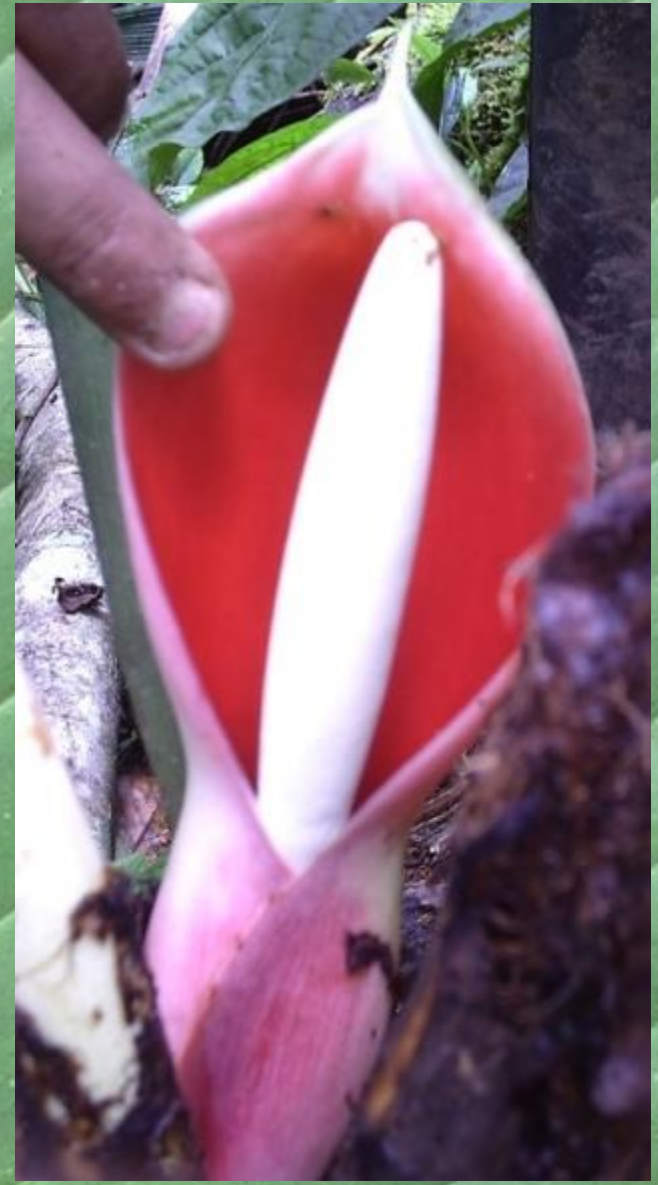
Philodendron maximum K. Krause



Philodendron brandtianum K. Krause



Philodendron schmidtae Croat & Ceron





Philodendron
98327

5 9 2007



5 9 2007

A photograph of a Philodendron deflexum plant. The plant features large, heart-shaped, bright green leaves with prominent, parallel veins. Several green, elongated flower buds are visible, some showing a slight purple tint at the base. The plant is growing in a dense, natural setting with other foliage and branches visible in the background.

Philodendron deflexum

7 4 2006



Philodendron gloriosum
André

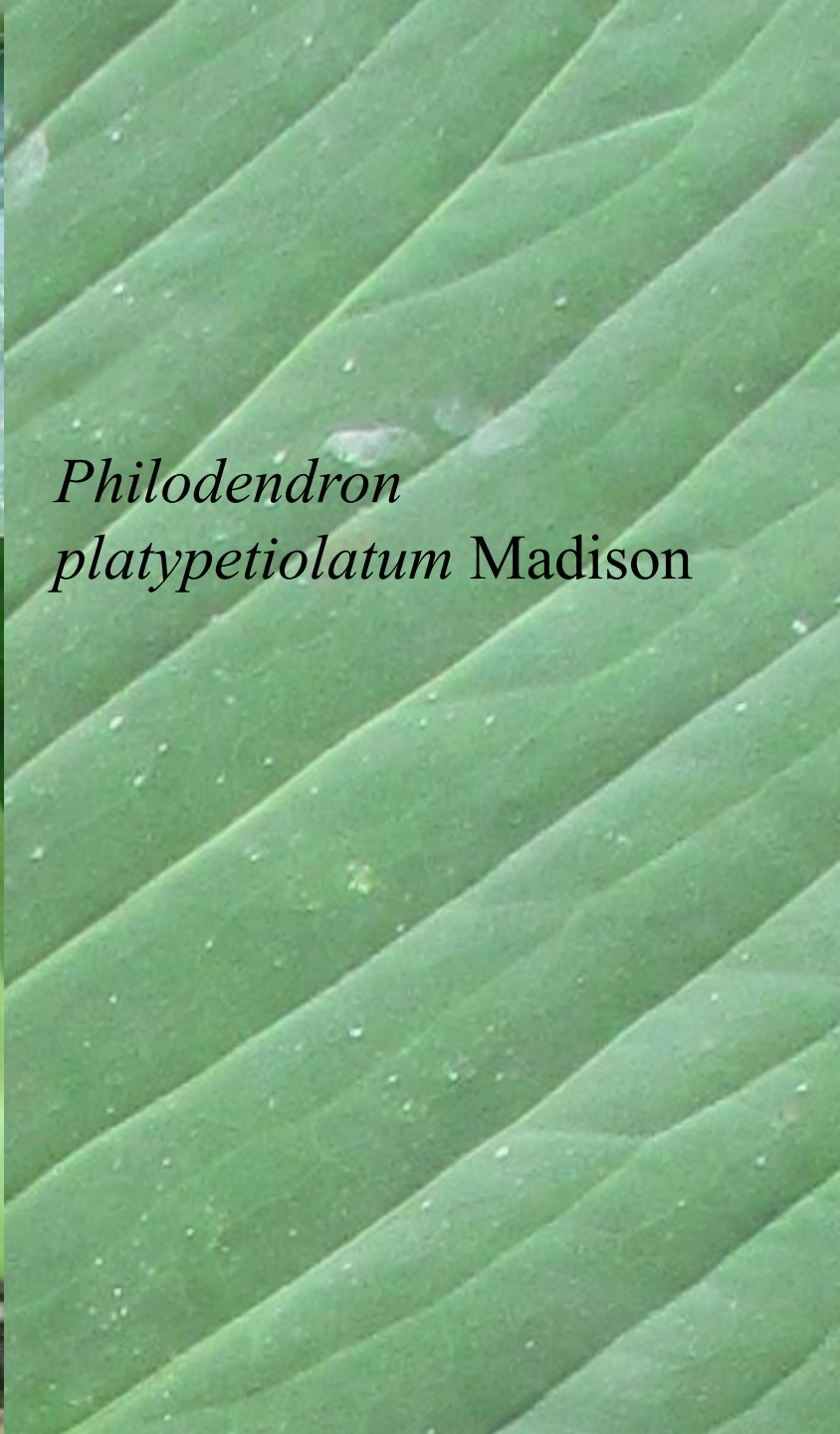


Philodendron wurdackii Bunting.





Philodendron
platypetiolatum Madison





**Philodendron
roseocataphyllum
Croat & M. Mora**

Croat 94449

Philodendron furcivenulum



Caladium





Caladium steudneriifolium Engl.

Xanthosoma



Xanthosoma



Xanthosoma



Xanthosoma cf.
daguense Engl.

Croat 96436

25 3 2006

25 3 2006

Xanthosoma sagittifolium



Xanthosoma



Xanthosoma helleborifolium (Jacq.) Schott



Chlorospatha callejasii Croat & L. Hannon

C. betancurii Croat & L. Hannon



Syngonium podophyllum



Montrichardia



Colombian biodiversity



Speakers in the Araceae first symposium Colombian botanical congress 2013



Felipe A. Cardona, German Oyuela, Julio Andres Sierra, Lorena Hernández G., Edwin Trujillo Trujillo, Natalia Castaño Rubiano, Dr. Thomas B. Croat, Carlos Mauricio Agudelo, Emanuel Andrés Ruiz Molina.

A close-up photograph of a green leaf, showing a central vein and several pairs of secondary veins branching out. The leaf has a slightly textured surface with some small white specks. The background is a solid green color.

Photografas

Felipe A. Cardona

Thomas B. Croat

Edwin Trujillo Trujillo

Lorena Hernández G

Natalia Castaño Rubiano