

UPGRADING TO A MLFF SINGLE GANTRY SOLUTION

Nuno Belgas
nbelgas@ascendi.pt



ASECAP DAYS



ISTANBUL 2023

Celebrating
YEARS
50
OF Successful
TOLL ROAD PROJECTS



INDEX

/ 01 Ascendi Overview

/ 02 The Challenge

/ 03 Project Phases

/ 04 Analysis & Results

/ 05 Conclusions





ascendi

Business Areas

Asset Management		<ul style="list-style-type: none"> / Control of 7 concessions / €3.6 Biliões Global Investment
Operation & Maintenance		<ul style="list-style-type: none"> / Road Operation & Maintenance / Intelligent Transport Systems (ITS) / Maintenance Management
Toll Collection		<ul style="list-style-type: none"> / 3 Traditional Toll Plaza Operation / 7 MLFF Operation

Major European reference in MLFF/AET

2nd Largest Road Concessionaire in Portugal



ascendi

Ascendi is a one-stop-shop company providing end-to-end solutions for toll industry, tailored to address customer needs.



www.ascendi.pt



France – New international Free Flow operation: A69




	One of the first MLFF in France
	54 (86 mi) Kms
	8 MLFF Toll collection points
	10,000,000 Toll transactions to process per year
	1.000.000 Contacts and interactions per year

/ 01 Ascendi Overview – The MLFF



2009

MLFF installation in Portugal

In 2009 Ascendi started the installation of 96 MLFF Toll Points with a 3 Gantry configuration



2020

Renovation of the MLFF system

After more than 10 years in operation, Ascendi started the renewal of the 96 Toll points, replacing obsolete equipment by newer updated models



2022

Installation of one MLFF Single Gantry

During the renovation of the MLFF system, a challenge emerged: to install one Single Gantry MLFF



3 Gantry MLFF



without disturbance

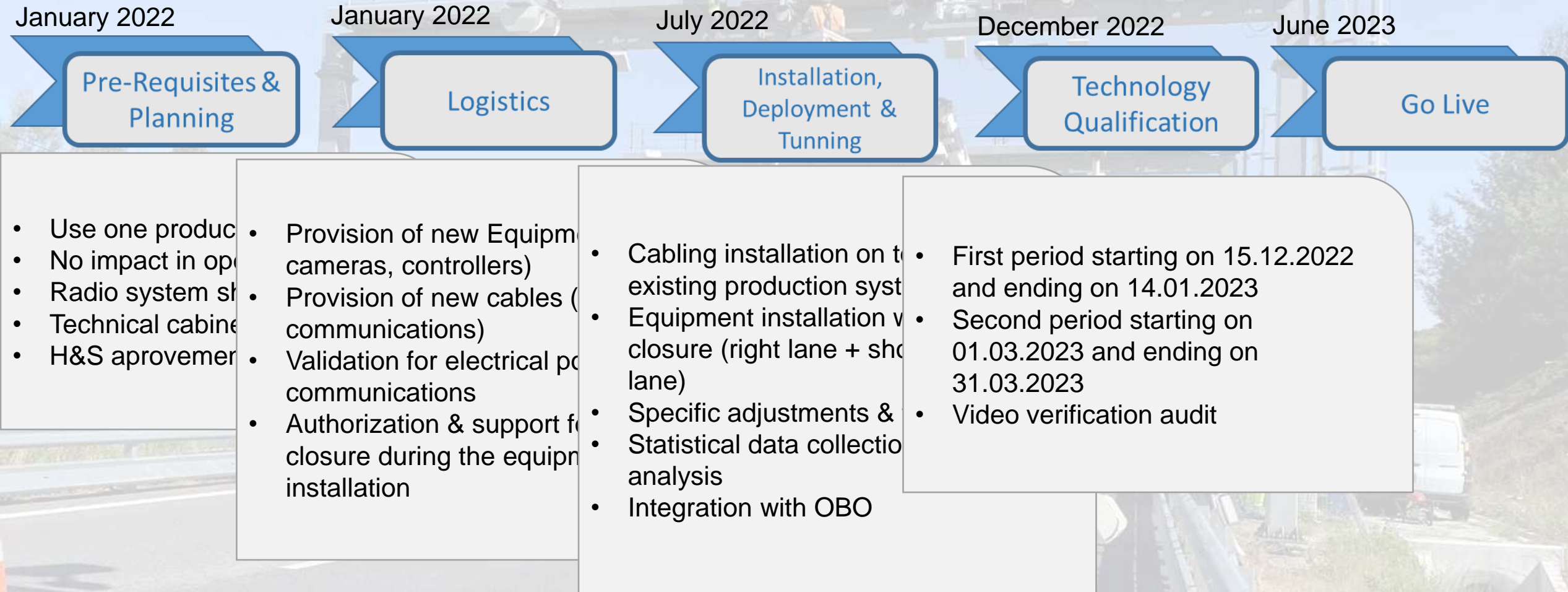
Single Gantry MLFF



/ 03 Project Phases



/ 03 Project Phases



/ 03 Project Phases

Technology Qualification

15.12.2022 to 14.01.2023

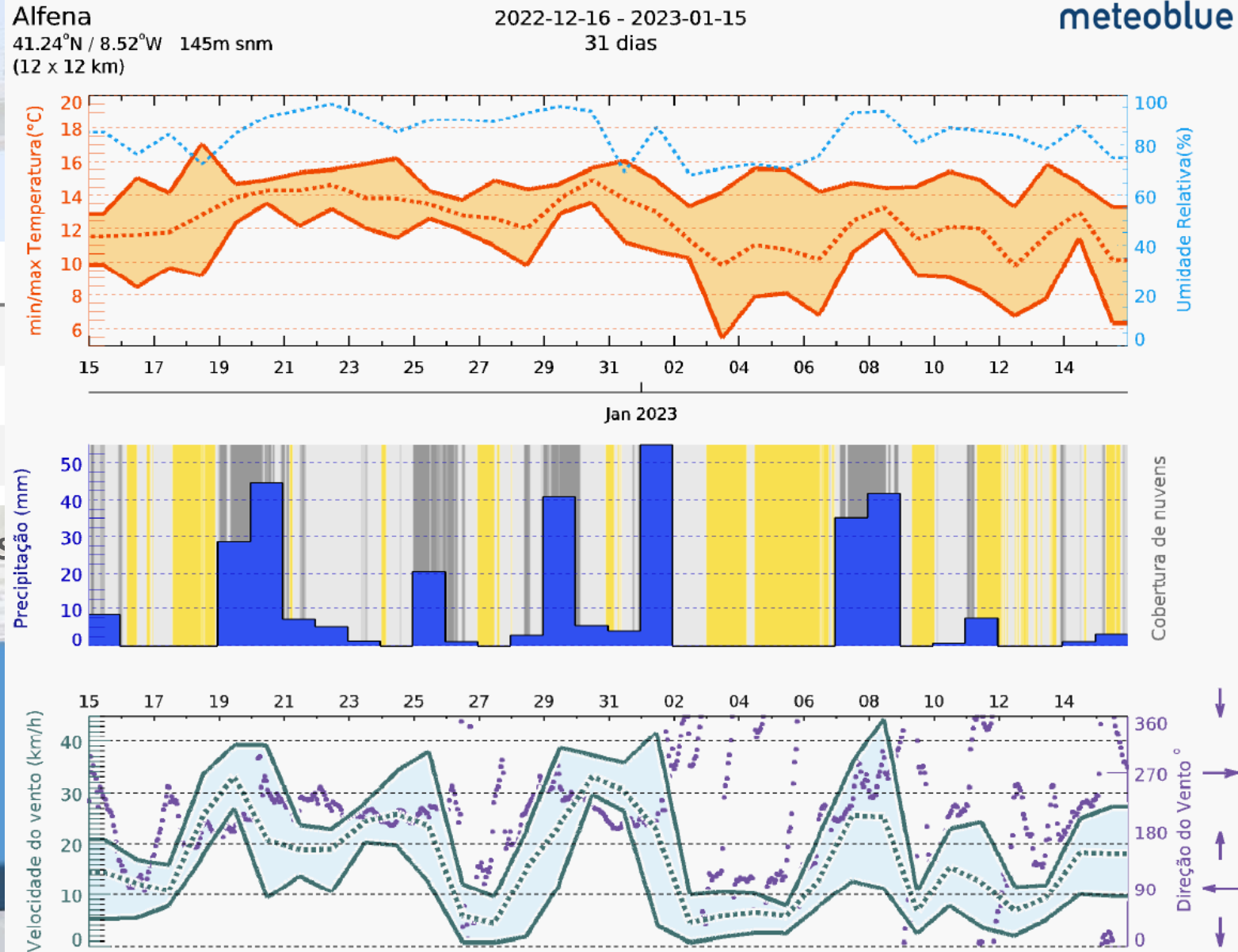
Number of Passages

Number ETC Passages

Number VTC Passages

TOTAL OF PAS

VTC
10%



/ 03 Project Phases

KPI 03

Technology Qualification

01.03.2023 to 31.03.2023

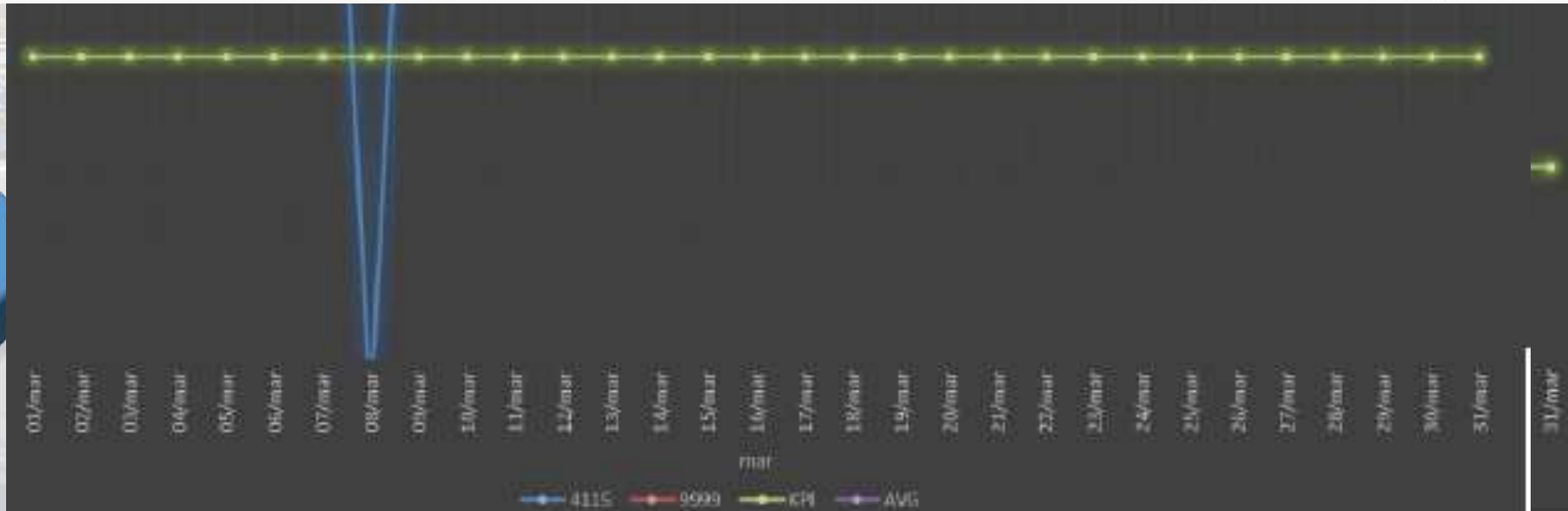
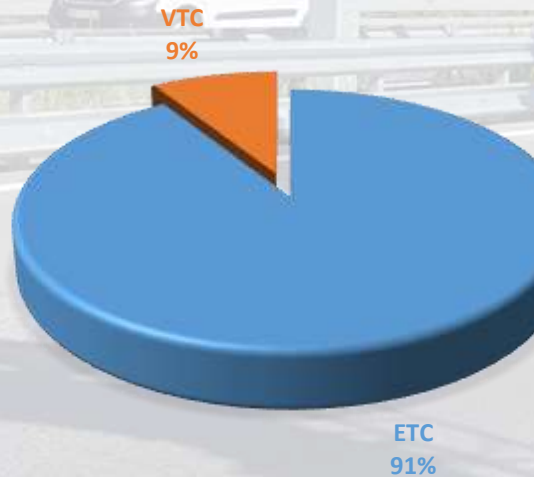
Number of Passages

Number ETC Passages

Number VTC Passages

	SG System	Video Verification	Diff
07h30 - 09h30	2 393	2 393	0
11h30 - 13h30	1 490	1 490	0
15h00 - 17h00	2 262	2 262	0
18h00 - 20h00	3 580	3 580	0
TOTAL	9 725	9 725	0

TOTAL OF PASSAGES



/ 03 Project Phases

January 2022

Pre-Requisites & Planning

January 2022

Logistics

July 2022

Installation, Deployment & Tuning

December 2022

Technology Qualification

June 2023

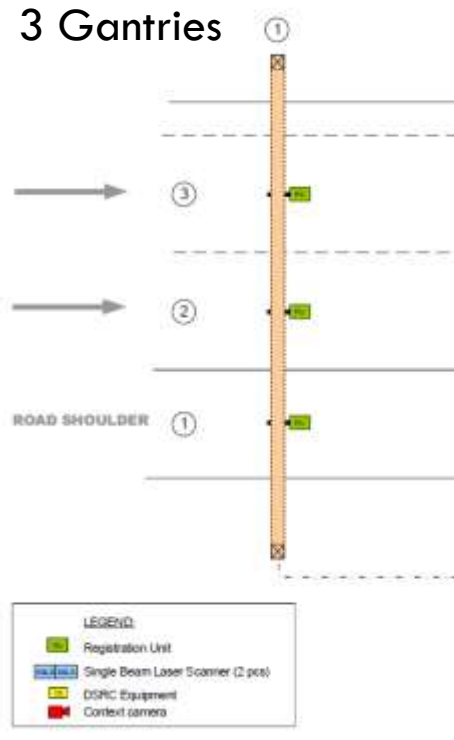
Go Live

- First period and ending 01.03.2023
- Second period 31.03.2023
- Video verification audit
- Monitoring & Minor performance improvement
- Go Live 07/06/2023
- 3 Gantry system decommission



Ascendi has 3 types of MLFF design

3 Gantries

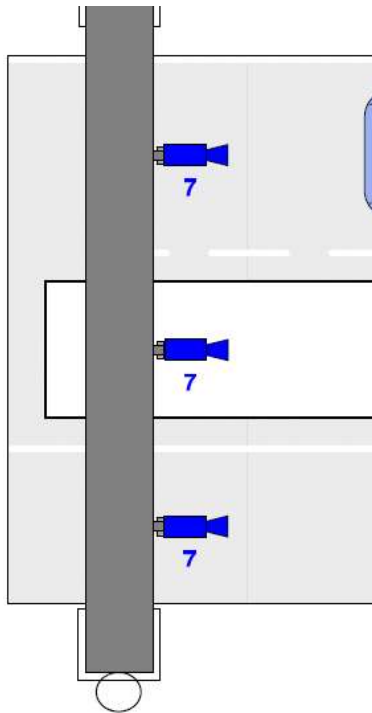


A29 – Costa de Prata



Ascendi has 3 types of MLFF design

2 Gantries



A13 – Pinhal Interior



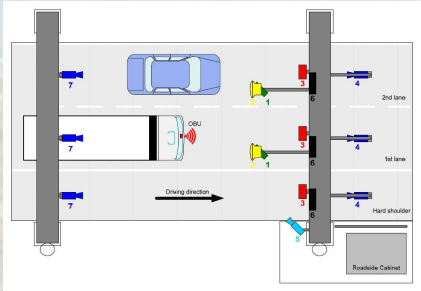
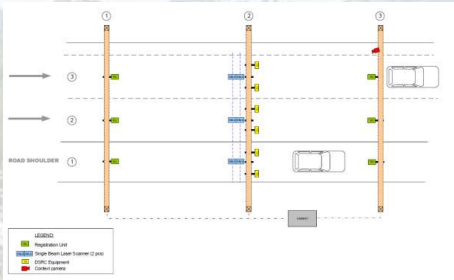
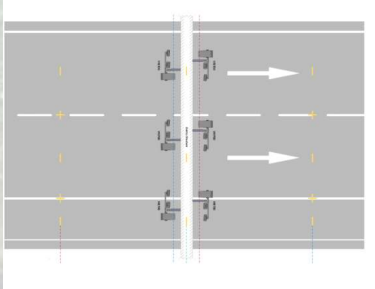
Ascendi has 3 types of MLFF design

1 Gantry



A41 – Grande Porto

Results: how do they compare one another?



Single Gantry	3 Gantries (renewed 2022)	2 Gantries (2017)
Performance	better (equipment)	better (equipment)
Power consumption	-	~-20%
Maintenance (time)	~-20%	~-10%
For a new instalation		
Cost reduction	- 2 gantries	- 1 gantry
Visual Impact	- 2 gantries	- 1 gantry



MLFF Single Gantry: Conclusions

- / A Single Gantry design is the suitable choice for a new installation (green field).
- / It has considerably less visual impact.
- / Maintenance times can be optimized.
- / Significant savings in implementation (civil works & gantries)
- / Performance will always depend on the solution.



“MANY OF THE THINGS THAT SEEM IMPOSSIBLE NOW WILL BECOME REALITIES TOMORROW.”

— [WALT DISNEY](#)

Nuno Belgas

nbelgas@ascendi.pt

