



@ignify

Energy saving
you can count on

PHILIPS

LIGHTOLIER
by @ignify

Day-Brite
CFI
by @ignify

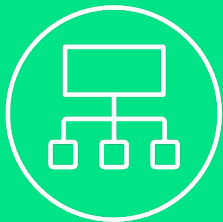
LUMEC
by @ignify

Stonco
by @ignify

interact

Signify Energy Solutions

Lighting upgrades provide a significant opportunity to drastically reduce energy costs and cut ongoing operations and maintenance expenses. As the global leader in lighting for more than 125 years, we have the know-how and the most comprehensive portfolio of energy efficient technology to meet the needs of almost any application.



Extensive Portfolio

From retrofit products through connected solutions, our team can help you determine the best solution for your customer's application



Product Availability

Our products are available and in-stock through an extensive, nation-wide distribution network



Project Management Support

Our dedicated sales and project execution teams are in place to help ensure that your projects are completed on-time and within budget

For information on our complete portfolio, visit www.signify.com/en-us/products

Table of contents

Retrofit Solutions

- 1 FlexFit (Type A+B) Lamps
- 2 InstantFit (Type A+C) Lamps
- 4 MainsFit (Type B) Lamps
- 6 MasterConnect Lamps
- 7 EvoKit Click
- 8 EvoKit
- 10 HID Replacements

Fixture Solutions

- 13 EvoGrid
- 14 Selectable Backlit Panel
- 15 FluxPanel
- 16 FluxGrid
- 18 Downlights
- 20 FluxStream
- 22 V3W Vaporlume
- 23 FBY Highbay
- 24 FCY Highbay
- 25 Slimflood
- 26 Area Light
- 28 Slim Wall Pack
- 29 Dusk to Dawn
- 30 Garage and Canopy
- 31 RoadFocus

Controls Solutions

- 36 Interact Pro Foundation
- 37 Interact Pro Advanced
- 38 Interact Pro Enterprise
- 39 SpaceWise

Retrofit Solutions





Philips FlexFit (Type A+B) lamps

FlexFit (UL Type A+B), one lamp for plug-and-play (UL Type A) or ballast bypass (UL Type B) installation



Why choose FlexFit (Type A+B) lamps?

- Simple Installation: Plug-and-play (Type A) or double-ended ballast bypass (Type B)
- No visible flicker
- 50,000 hour life and a 5-year limited warranty
- Maintains light level regardless of installation method

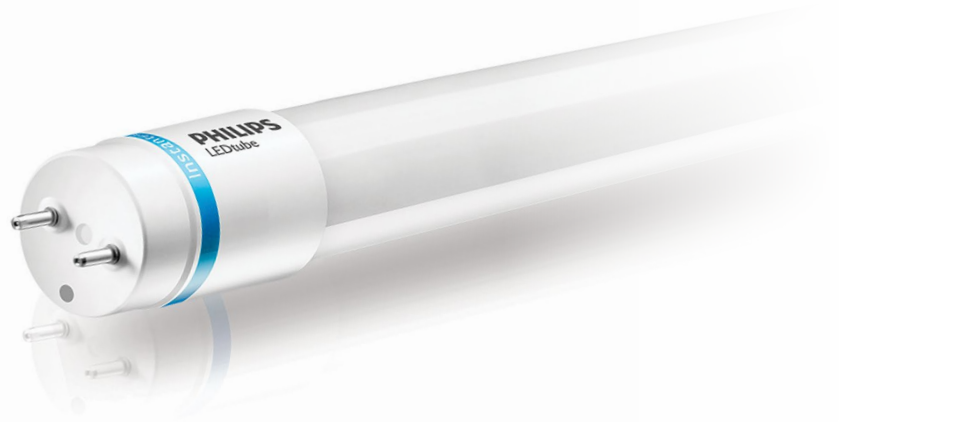
Flexfit (Type A+B) Lamps

Tier	Type	6NC	Description	Watts	Color Temp	Lumens	DLC Code	Controls
CorePro	4' T8	535468	12.5T8/COR/48-835/FF17/G/DIM 25/1	12.5W	3500K	1700L	PNPPUDXB	On/Off
CorePro	4' T8	535476	12.5T8/COR/48-840/FF18/G/DIM 25/1	12.5W	4000K	1800L	PD745LMC	On/Off
CorePro	4' T8	535484	12.5T8/COR/48-850/FF18/G/DIM 25/1	12.5W	5000K	1800L	PMAB652F	On/Off

Philips InstantFit (Type A+C) lamps

This is **real compatibility**

InstantFit has been proven to work with over 350 ballasts and drivers delivering even light output, proven energy savings and a long average lifetime.



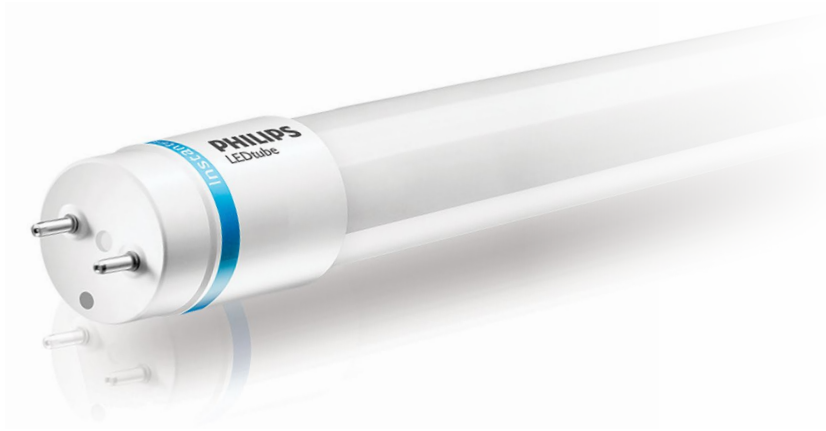
Why choose InstantFit (Type A+C) lamps?

- Works with more ballasts and drivers than any other lamp so it's going to perform as expected and prevent rework
- Shatter-resistant lamps prevent breakage, not just contain shattered glass
- Proven over 40% energy savings¹ over fluorescent for continual payback over the life of the product
- Average life rating of 50,000 hours with lifetimes up to 70,000 hours
- No mercury allowing for non-hazardous waste disposal



InstantFit (Type A+C) Lamps

Type	Color Temp	Tier	Part Number	Description	Watts	Lumens	DLC Code ¹	Dim
4' T8	3500K	CorePro	470104	14T8/COR/48-835/IF20/G/DIM 10/1	14W	2000L	PD9P382I	Yes
4' T8	4000K	CorePro	470112	14T8/COR/48-840/IF21/G/DIM 10/1	14W	2100L	PK33B4AL	Yes
2' T5	3500K	CorePro	476424	8T5HE/22-835/IF10/G/DIM 10/1	8W	1000L	N/A	Yes
2' T5	4000K	CorePro	476432	8T5HE/22-840/IF10/G/DIM 10/1	8W	1050L	N/A	Yes
2' T5	5000K	CorePro	476440	8T5HE/22-850/IF10/G/DIM 10/1	8W	1050L	N/A	Yes
3' T5	3500K	CorePro	476465	11T5HE/34-835/IF14/G/DIM 10/1	11W	1400L	N/A	Yes
3' T5	4000K	CorePro	476473	11T5HE/34-840/IF15/G/DIM 10/1	11W	1500L	N/A	Yes
3' T5	5000K	CorePro	476481	11T5HE/34-850/IF15/G/DIM 10/1	11W	1500L	N/A	Yes
4' T5	3500K	CorePro	476507	14T5HE/46-835/IF20/G/DIM 10/1	14W	2000L	PX50DKZF	Yes
4' T8	5000K	CorePro	470120	14T8/COR/48-850/IF21/G/DIM 10/1	14W	2100L	PEQWC6CZ	Yes
4' T5	4000K	CorePro	476515	14T5HE/46-840/IF21/G/DIM 10/1	14W	2100L	P2RN9SKT	Yes
4' T5	5000K	CorePro	476523	14T5HE/46-850/IF21/G/DIM 10/1	14W	2100L	PLAEVGFO	Yes
8' T8	3500K	CorePro	533018	30T8/COR/96-835/IF39/G/FA8 10/1	30W	4200L	PZKP0TXO	No
8' T8	4000K	CorePro	533026	30T8/COR/96-840/IF42/G/FA8 10/1	30W	4200L	P73Q3PKC	No
8' T8	5000K	CorePro	533034	30T8/COR/96-850/IF42/G/FA8 10/1	30W	4200L	PRG5ZZ3R	No
4' T8	4000K	CorePro	542084	16T8/LED/48-840/IF18/G 25/1	16W	1800L	N/A	No
4' T8	5000K	CorePro	542092	16T8/LED/48-850/IF18/G 25/1	16W	1800L	N/A	No
4' T8	3500K	CorePro	553222	10T8/COR/48-835/IF15/G/DIM 10/1	10W	1500L	PVEGD8IP	Yes
4' T8	4000K	CorePro	553230	10T8/COR/48-840/IF16/G/DIM 10/1	10W	1600L	PMMN006E	Yes
4' T8	5000K	CorePro	553248	10T8/COR/48-850/IF16/G/DIM 10/1	10W	1600L	P6YC6AM6	Yes



InstantFit (Type A+C) Lamps

Type	Color Temp	Tier	Part Number	Description	Watts	Lumens	DLC Code	Dim
4' T5	3500K	MasterClass	467134	24T5HO/46-835/IF33/P/DIM 10/1	24W	3300L	PR7H998W	Yes
4' T5	4000K	MasterClass	467142	24T5HO/46-840/IF35/P/DIM 10/1	24W	3500L	PUFNVUMP	Yes
4' T5	5000K	MasterClass	467159	24T5HO/46-850/IF35/P/DIM 10/1	24W	3500L	PJHYX3QV	Yes
8' T8	3500K	MasterClass	469247	35T8/96-3500 IF FA8 10/1	35W	4000L	N/A	No
8' T8	4000K	MasterClass	469254	35T8/96-4000 IF FA8 10/1	35W	4200L	N/A	No
4' T8	3500K	MasterClass	473934	13T8/MAS/48-835/IF20/P/DIM 10/1	13W	2000L	PNKEQNTE	Yes
4' T8	4000K	MasterClass	473942	13T8/MAS/48-840/IF21/P/DIM 10/1	13W	2100L	PPS0M8AQ	Yes
4' T8	5000K	MasterClass	473958	13T8/MAS/48-850/IF21/P/DIM 10/1	13W	2100L	PY4PF7KV	Yes
4' T8	3500K	MasterClass	565598	8.9T8/MAS/48-835/IF15/P/DIM 10/1	8.9W	1500L	PCYCNPOO	Yes
4' T8	4000K	MasterClass	565606	8.9T8/MAS/48-840/IF16/P/DIM 10/1	8.9W	1600L	P1GPHJTW	Yes
4' T8	5000K	MasterClass	565614	8.9T8/MAS/48-850/IF16/P/DIM 10/1	8.9W	1600L	PTB8BS59	Yes
3' T8	3500K	MasterClass	539866	8.5T8/MAS/36-835/IF13/P/DIM 10/1	8.5W	1300L	P3WOXMJG	Yes
3' T8	4000K	MasterClass	539874	8.5T8/MAS/36-840/IF14/P/DIM 10/1	8.5W	1400L	PNZ6ODAV	Yes
3' T8	5000K	MasterClass	539882	8.5T8/MAS/36-850/IF14/P/DIM 10/1	8.5W	1400L	PUDMU6QC	Yes
2' T8	3500K	MasterClass	541821	7T8/MAS/24-835/IF10/P/DIM 10/1	7W	1050L	PTFG2KIH	Yes
2' T8	4000K	MasterClass	541839	7T8/MAS/24-840/IF11/P/DIM 10/1	7W	1150L	PNFV1220	Yes
2' T8	5000K	MasterClass	541847	7T8/MAS/24-850/IF11/P/DIM 10/1	7W	1150L	PSUTWB50	Yes
6U T8	3500K	MasterClass	541862	13T8-6U/MAS/24-835/IF20/P/DIM 10/1	13W	2000L	PQ9KE4CE	Yes
6U T8	4000K	MasterClass	541870	13T8-6U/MAS/24-840/IF21/P/DIM 10/1	13W	2100L	PZX06205	Yes
6U T8	5000K	MasterClass	541888	13T8-6U/MAS/24-850/IF21/P/DIM 10/1	13W	2100L	PA88I3S4	Yes
4' T8	3500K	MasterClass	533372	15.5T8/MAS/48-835/IF24/P/DIM 25/1	15.5W	2400L	P51ZCP75	Yes
4' T8	4000K	MasterClass	545194	15.5T8/MAS/48-840/IF25/P/DIM 25/1	15.5W	2500L	PCYKVJSI	Yes
4' T8	5000K	MasterClass	545200	15.5T8/MAS/48-850/IF25/P/DIM 25/1	15.5W	2500L	POHKOY9Y	Yes

1. DLC Product ID list is for UL Type A only. The product may also be DLC certified as UL Type C. To verify search the DLC QPL.

Note:

Type C Solution - use InstantFit lamps above with TLED drivers [linked here](#).

For drivers specific compatibility, [click here](#).

Philips MainsFit (Type B) lamps

Installation **simplified**

Use a double-ended design that significantly simplifies installation, saving time and costs over single-ended versions.

T8 MainsFit CorePro U-Bend



T8 MainsFit MasterClass



T8 MainsFit CorePro



T5HO MainsFit CorePro



Why choose MainsFit (Type B) lamps?

- Built-in shock and surge protection. No external device needed
- Double-ended for faster installs
- Proven over 40% energy savings over fluorescent systems
- UL Type B ballast bypass
- Emergency capable with Philips PTB15D, Bodine ELI-S-20 or ELI-S-100 EM drivers
- No mercury allowing for non-hazardous waste disposal



MainsFit (Type B) Lamps

Type	Color Temp	Tier	6NC	Description	Watts	Lumens	DLC Code	Controls
2' T8	3500K	CorePro	535468	8.5T8/COR/24-835/MF11/G 10/1	8.5W	1100L	PKG7DURA	On/off
2' T8	4000K	CorePro	535476	8.5T8/COR/24-840/MF11/G 10/1	8.5W	1150L	PRGU80IY	On/off
2' T8	5000K	CorePro	535484	8.5T8/COR/24-850/MF11/G 10/1	8.5W	1150L	PEQHT1DN	On/off
3' T8	3500K	CorePro	535500	11.5T8/COR/36-835/MF13/G 10/1	11.5W	1300L	P51PGWYW	On/off
3' T8	4000K	CorePro	535518	11.5T8/COR/36-840/MF14/G 10/1	11.5W	1400L	PDESZ0HQ	On/off
3' T8	5000K	CorePro	535526	11.5T8/COR/36-850/MF14/G 10/1	11.5W	1400L	P6A2TN9L	On/off
4' T5	3500K	CorePro	542050	25T5HO/COR/46-835/MF33/G 25/1	25W	3300L	P9GYNK8G	On/off
4' T5	4000K	CorePro	542068	25T5HO/COR/46-840/MF35/G 25/1	25W	3500L	PBQ7UFSX	On/off
4' T5	5000K	CorePro	542076	25T5HO/COR/46-850/MF35/G 25/1	25W	3500L	PHK6IM4L	On/off
6U T8	3500K	CorePro	535542	15.5T8-6U/COR/24-835/MF20/G 10/1	15.5W	2000L	PVKJRY18	On/off
6U T8	4000K	CorePro	535559	15.5T8-6U/COR/24-840/MF21/G 10/1	15.5W	2100L	PUAR19X3	On/off
6U T8	5000K	CorePro	535567	15.5T8-6U/COR/24-850/MF21/G 10/1	15.5W	2100L	PMKCEPRN	On/off
8' T8	4000K	CorePro	545269	34T8/COR/96-840/MF42/G/FA8 10/1	34W	4200L	P2RHO524	On/off
8' T8	5000K	CorePro	545277	34T8/COR/96-850/MF42/G/FA8 10/1	34W	4200L	PE2GMBO6	On/off
8' T8	4000K	CorePro	545285	44T8HO/COR/96-840/MF54/G/R17d 10/1	44W	5400L	N/A	On/off
8' T8	5000K	CorePro	545293	44T8HO/COR/96-850/MF54/G/R17d 10/1	44W	5400L	N/A	On/off
4' T8	3500K	CorePro	563536	14.5T8/COR/48-835/MF20/G/DIM 10/1	14.5W	2000L	PWIUQJVW	Limited
4' T8	4000K	CorePro	563544	14.5T8/COR/48-840/MF21/G/DIM 10/1	14.5W	2100L	P7YG7OL7	Limited
4' T8	5000K	CorePro	563551	14.5T8/COR/48-850/MF21/G/DIM 10/1	14.5W	2100L	PDR4QOQZ	Limited

T8 MainsFit
CorePro U-Bend



T8 MainsFit
MasterClass



T8 MainsFit
CorePro



T5HO MainsFit
CorePro



MainsFit (Type B) Lamps

Type	Color Temp	Tier	6NC	Description	Watts	Lumens	DLC Code	Controls
4' T8	3500K	CorePro	563494	12T8/COR/48-835/MF17/G/DIM 10/1	12W	1700L	P81MG6WR	Limited
4' T8	4000K	CorePro	563502	12T8/COR/48-840/MF18/G/DIM 10/1	12W	1800L	PXKUDN50	Limited
4' T8	5000K	CorePro	563510	12T8/COR/48-850/MF18/G/DIM 10/1	12W	1800L	PVDPRFDJ	Limited
4' T8	3500K	CorePro	563452	9.9T8/COR/48-835/MF15/G 10/1	9.9	1550L	PJWBAG7L	Limited
4' T8	4000K	CorePro	563460	9.9T8/COR/48-840/MF16/G 10/1	9.9	1600L	P4GNLB60	Limited
4' T8	5000K	CorePro	563478	9.9T8/COR/48-850/MF16/G 10/1	9.9	1600L	PNRHRC3T	Limited
4' T8	3500K	MasterClass	557355	10.5T8/MAS/48-835/MF16/P 10/1	10.5W	1600L	P7ADB1B8	On/off
4' T8	4000K	MasterClass	557363	10.5T8/MAS/48-840/MF16/P 10/1	10.5W	1650L	PAWQXZLG	On/off
4' T8	5000K	MasterClass	557371	10.5T8/MAS/48-850/MF16/P 10/1	10.5W	1650L	PNSQUHUR	On/off
4' T8	3500K	MasterClass	557397	14.5T8/MAS/48-835/MF20/P 10/1	14.5W	2000L	PVMNRRGB	On/off
4' T8	4000K	MasterClass	557405	14.5T8/MAS/48-840/MF21/P 10/1	14.5W	2100L	PHHILPJB	On/off
4' T8	5000K	MasterClass	557413	14.5T8/MAS/48-850/MF21/P 10/1	14.5W	2100L	P7NU9OQ8	On/off
4' T8	3500K	MasterClass	561720	16.9T8/MAS/48-835/MF25/P 10/1	16.9W	2500L	PCEVR8V0	On/off
4' T8	4000K	MasterClass	561712	16.9T8/MAS/48-840/MF25/P 10/1	16.9W	2500L	PCQY4G1R	On/off
4' T8	5000K	MasterClass	561738	16.9T8/MAS/48-850/MF25/P 10/1	16.9W	2500L	PF18Z6UF	On/off

Note: Available emergency battery backup. Please refer to:
<https://www.assets.signify.com/is/content/Signify/Assets/philips-lighting/united-states/20210706-emergency-backup-for-type-b.pdf>

Philips MasterConnect Lamps

Scalable connected lighting,
maximized energy savings



Why choose MasterConnect Lamps?

- Proven wireless technology
- Simple setup via bluetooth (Android and iOS)
- Lamps compatible with all interact systems, from the stand-alone Interact Foundation through the fully integrated Interact Enterprise
- Future-proof design enables upgrades as your needs change



MasterConnect Lamps

Tier	Lamp Type	Part Number	Description	UL Type	Watts	Color Temp	Lumens	ESv2.0/DLC ID #	Dim
MasterClass	PAR30L	553602	8PAR30L/MC/930/F25/IA/120V 6/1FB	-	8W	3000K	850L	2377951	Wireless
MasterClass	PAR30L	553636	8PAR30L/MC/930/F40/IA/120V 6/1FB	-	8W	3000K	850L	2377950	Wireless
MasterClass	PAR30S	553669	8PAR30S/MC/930/F25/IA/120V 6/1FB	-	8W	3000K	850L	2377952	Wireless
MasterClass	PAR30S	553693	8PAR30S/MC/930/F40/IA/120V 6/1FB	-	8W	3000K	850L	2377949	Wireless
MasterClass	PAR38	555789	13PAR38/MC/930/F25/IA/120V 6/1FB	-	13W	3000K	1200L	2377954	Wireless
MasterClass	PAR38	555813	13PAR38/MC/930/F40/IA/120V 6/1FB	-	13W	3000K	1200L	2377953	Wireless
MasterClass	4' T8	562736	14.5T8/48-835/MF20/MC IA 10/1	B	14.5W	3500K	2000L	PGLYX8QV	Wireless
MasterClass	4' T8	562744	14.5T8/48-840/MF21/MC IA 10/1	B	14.5W	4000K	2100L	PNAN8SNC	Wireless
MasterClass	4' T8	562751	14.5T8/48-850/MF21/MC IA 10/1	B	14.5W	5000K	2100L	PJM308EI	Wireless
MasterClass	4' T8	547299	14T8/48-835/IF20/MC IA 10/1	A	14W	3500K	2000L	P63GG2HV	Wireless
MasterClass	4' T8	547307	14T8/48-840/IF21/MC IA 10/1	A	14W	4000K	2100L	PYHJU4IT	Wireless
MasterClass	4' T8	547315	14T8/48-850/IF21/MC IA 10/1	A	14W	5000K	2100L	PWENVHM8	Wireless



EvoKit Click 2x2

EvoKit Click 2x4

Philips EvoKit Click

Transform a space with performance and value

The cost effective solution for low price, reduced project scrap with simple and quick installation for renovation projects.



Why choose EvoKit Click LED retrofit kits?

- Sleek and modern look for a refreshed space
- Integrated light engine enables easy maintenance and future upgradeability from below ceiling without tools
- High efficacy/low wattage for maximum rebates and energy savings
- Fits most 2x4, 2x2 troffers (grid/narrow grid)
- Control options for maximum flexibility

EvoKit Click

Type	Part Number	Description	Watts	ColorTemp	Lumens	DLC Code	Controls Capability
2x4 Click	121400	EvoKit CLKE 2x4 42L 29W 835 UNV SWZCS P1	29W	3500K	4200L	-	Interact Pro scalable
2x2 Click	523589	EvoKit CLK 2x2 32L 29W 835 UNV 0-10 P4	29W	3500K	3200L	P5ZOVZ5C	0-10V dim
2x2 Click	523597	EvoKit CLK 2x2 32L 29W 840 UNV 0-10 P4	29W	4000K	3200L	P2B98AZY	0-10V dim
2x2 Click	523621	EvoKit CLKE 2x2 32L 24W 835 UNV 0-10 P4	24W	3500K	3200L	PBBL99UF	0-10V dim
2x2 Click	523647	EvoKit CLKE 2x2 32L 24W 840 UNV 0-10 P4	24W	4000K	3200L	PCGIVN5U	0-10V dim
2x2 Click	523878	EvoKit CLKE 2x2 32L 24W 840 UNV SWZCS P4	24W	4000K	3200L	-	Interact Pro scalable
2x2 Click	523464	EvoKit CLKE 2x2 32L 24W 835 UNV SWZCS P1	24W	3500K	3200L	-	Interact Pro scalable
2x4 Click	523563	EvoKit CLK 2x4 42L 38W 835 UNV 0-10 P4	38W	3500K	4200L	PZWCK3EC	0-10V dim
2x4 Click	523571	EvoKit CLK 2x4 42L 38W 840 UNV 0-10 P4	38W	4000K	4200L	PRN9O49H	0-10V dim
2x4 Click	523704	EvoKit CLKE 2x4 42L 30W 835 UNV 0-10 P4	30W	3500K	4200L	PM0UHBXD	0-10V dim
2x4 Click	523720	EvoKit CLKE 2x4 42L 30W 840 UNV 0-10 P4	30W	4000K	4200L	PD7HU98K	0-10V dim
2x4 Click	523886	EvoKit CLKE 2x4 42L 29W 840 UNV SWZCS P4	29W	4000K	4200L	-	Interact Pro scalable

Philips EvoKit

Savings, control and comfort without complexity

Simple and dlost lasting luminaires designed for ease of handling and installation.

EvoKit 2x4

EvoKit 2x2



Why choose EvoKit?

- Energy efficient alternative to traditional linear flourescent troffers
- Reduced maintenance costs due to its long lifetime
- Simple construction helps decrease the installation time meaning you can have an LED solution in your ceiling in just minutes
- Control options for maximum flexibility



EvoKit

Type	Part Number	Description	Watts	Color Temp	Lumens	DLC Code	Controls Capability
2x2 EvoKit	528000	EvoKit 2x2 31L 22W 835 UNV 0-10 G5	22W	3500K	3100L	PSWKA7ZK	0-10V dim
2x2 EvoKit	528018	EvoKit 2x2 31L 22W 840 UNV 0-10 G5	22W	4000K	3100L	PUG7W7RN	0-10V dim
2x2 EvoKit	527978	EvoKit 2x2 21L 15W 835 UNV 0-10 G5	15W	3500K	2100L	PJYGO9Y9	0-10V dim
2x2 EvoKit	527966	EvoKit 2x2 21L 14W 840 UNV 0-10 G5	14W	4000K	2100L	PKLVRV6E	0-10V dim
2x4 EvoKit	528034	EvoKit 2x4 36L 25W 835 UNV 0-10 G5	25W	3500K	3600L	PWRNOVVZ	0-10V dim
2x4 EvoKit	528042	EvoKit 2x4 36L 25W 840 UNV 0-10 G5	25W	4000K	3600L	PJ1VT6ZN	0-10V dim
2x4 EvoKit	528067	EvoKit 2x4 42L 28W 835 UNV 0-10 G5	28W	3500K	4200L	P93JSRAO	0-10V dim
2x4 EvoKit	528075	EvoKit 2x4 42L 28W 840 UNV 0-10 G5	28W	4000K	4200L	PEX2M01D	0-10V dim
2x2 EvoKit HE	528331	EvoKit HE 2x2 31L 20W 835 UNV SWZDT G5	20W	3500K	3100L	PLY7JATN	SpaceWise DT
2x2 EvoKit HE	528349	EvoKit HE 2x2 31L 20W 840 UNV SWZDT G5	20W	4000K	3100L	PA70YA1T	SpaceWise DT
2x2 EvoKit HE	113977	EvoKit HE 2x2 31L 20W 835 UNV SWZCS G5	20W	3500K	3100L	-	Interact Pro scalable
2x2 EvoKit HE	113985	EvoKit HE 2x2 31L 20W 840 UNV SWZCS G5	20W	4000K	3100L	-	Interact Pro scalable
2x2 EvoKit HE	527091	EvoKit HE 2x2 21L 14W 835 UNV 0-10 G5	14W	3500K	2100L	PUGMBS16	0-10V dim
2x2 EvoKit HE	528109	EvoKit HE 2x2 21L 13W 840 UNV 0-10 G5	13W	4000K	2100L	PYJ89RMO	0-10V dim
2x2 EvoKit HE	528125	EvoKit HE 2x2 31L 21W 835 UNV 0-10 G5	21W	3500K	3100L	PYJOLHNG	0-10V dim
2x2 EvoKit HE	528133	EvoKit HE 2x2 31L 20W 840 UNV 0-10 G5	20W	4000K	3100L	PKDMRWK	0-10V dim



EvoKit

Type	Part Number	Description	Watts	Color Temp	Lumens	DLC Code	Controls Capability
2x4 EvoKit HE	528380	EvoKit HE 2x4 42L 26W 835 UNV SWZDT G5	26W	3500K	4200L	PHNQY06J	SpaceWise DT
2x4 EvoKit HE	528398	EvoKit HE 2x4 42L 26W 840 UNV SWZDT G5	26W	4000K	4200L	P5IZU2I3	SpaceWise DT
2x4 EvoKit HE	113993	EvoKit HE 2x4 42L 26W 835 UNV SWZCS G5	26W	3500K	4200L	-	Interact Pro scalable
2x4 EvoKit HE	114009	EvoKit HE 2x4 42L 26W 840 UNV SWZCS G5	26W	4000K	4200L	-	Interact Pro scalable
2x4 EvoKit HE	528174	EvoKit HE 2x4 36L 23W 835 UNV 0-10 G5	23W	3500K	3600L	PC6HDF4T	0-10V dim
2x4 EvoKit HE	528182	EvoKit HE 2x4 36L 22W 840 UNV 0-10 G5	22W	4000K	3600L	PDRCBXT7	0-10V dim
2x4 EvoKit HE	528208	EvoKit HE 2x4 42L 26W 835 UNV 0-10 G5	26W	3500K	4200L	PHNWH9I6	0-10V dim
2x4 EvoKit HE	528216	EvoKit HE 2x4 42L 26W 840 UNV 0-10 G5	26W	4000K	4200L	PHH4VFGX	0-10V dim

Philips HID replacement

Save energy, **retain uniqueness**

A direct replacement for 400W Metal Halide high bay lighting applications that delivers high lumens at substantial energy savings.



**TrueForce
MasterClass LED
HighBay**



**CorePro LED
Corn Cob**



**TrueForce
MasterClass LED
Corn Cob**



**CorePro LED
Wallpack Retrofit**

Why choose HID replacement lamps?

- The Philips HID replacement LED lamp portfolio offers a complete range of HID replacement options that allow for quick and easy energy saving replacement of traditional lamps
- MasterClass LED Lamps are the highest performing portfolio of LED Lamps, with superior performance and lighter weight construction
- Core Pro LED Lamps offer efficiency and value, with limited up front cost



HID Replacement (Type B) Lamps

Tier	Type	6NC	Description	Watts	Color Temp	Lumens	DLC Code	Controls
CorePro	Wall Pack	559906	20WP/LED/830/ND E26 G2 BB 6/1	20W	3000K	2800L	-	On/off
CorePro	Wall Pack	559914	20WP/LED/840/ND E26 G2 BB 6/1	20W	4000K	2900L	-	On/off
CorePro	Wall Pack	559922	20WP/LED/850/ND E26 G2 BB 6/1	20W	5000K	3000L	-	On/off
CorePro	Wall Pack	559930	40WP/LED/840/ND EX39 G2 BB 6/1	40W	4000K	5800L	PL9BSOOTPUAT	On/off
CorePro	Wall Pack	559948	40WP/LED/850/ND EX39 G2 BB 6/1	40W	5000K	6000L	PLM8Z3C8U989	On/off
CorePro	Wall Pack	559954	60WP/LED/850/ND EX39 G2 BB 6/1	60W	5000K	9000L	PLWWWVPLKQCR	On/off
CorePro	Wall Pack	559962	60WP/LED/840/ND EX39 G2 BB 6/1	60W	4000K	8700L	PLRH34S8B0P0	On/off
CorePro	Corn Cob	559633	18CC/LED/830/ND E26 G2 BB 6/1	18W	3000K	2300L	-	On/off
CorePro	Corn Cob	559641	18CC/LED/840/ND E26 G2 BB 6/1	18W	4000K	2400L	-	On/off
CorePro	Corn Cob	559658	18CC/LED/850/ND E26 G2 BB 6/1	18W	5000K	2500L	-	On/off
CorePro	Corn Cob	559666	27CC/LED/830/ND E26 G2 BB 6/1	27W	3000K	3500L	-	On/off
CorePro	Corn Cob	559674	27CC/LED/840/ND E26 G2 BB 6/1	27W	4000K	3700L	-	On/off
CorePro	Corn Cob	559682	27CC/LED/850/ND E26 G2 BB 6/1	27W	5000K	3800L	-	On/off
CorePro	Corn Cob	559690	36CC/LED/830/ND E26 G2 BB 6/1	36W	3000K	5000L	-	On/off
CorePro	Corn Cob	559708	36CC/LED/840/ND E26 G2 BB 6/1	36W	4000K	5200L	-	On/off
CorePro	Corn Cob	559716	36CC/LED/850/ND E26 G2 BB 6/1	36W	5000K	5400L	-	On/off
CorePro	Corn Cob	559724	36CC/LED/830/ND EX39 G2 BB 6/1	36W	3000K	5000L	PLIC6G1IGCEL	On/off
CorePro	Corn Cob	559732	36CC/LED/840/ND EX39 G2 BB 6/1	36W	4000K	5200L	PLYOMFKAHJRR	On/off
CorePro	Corn Cob	559740	36CC/LED/850/ND EX39 G2 BB 6/1	36W	5000K	5400L	PL6P3JOF9RV8	On/off
CorePro	Corn Cob	559757	45CC/LED/830/ND EX39 G2 BB 6/1	45W	3000K	6200L	PLVTV3KUSF8I	On/off
CorePro	Corn Cob	559765	45CC/LED/840/ND EX39 G2 BB 6/1	45W	4000K	6500L	PLOLK3G2A4RT	On/off



**TrueForce
MasterClass LED
HighBay**



**CorePro LED
Corn Cob**



**TrueForce
MasterClass LED
Corn Cob**



**CorePro LED
Wallpack Retrofit**

HID Replacement (Type B) Lamps

Tier	Type	6NC	Description	Watts	Color Temp	Lumens	DLC Code	Controls
CorePro	Corn Cob	559773	45CC/LED/850/ND EX39 G2 BB 6/1	45W	5000K	6700L	PLCSCBE5FQYY	On/off
CorePro	Corn Cob	559781	54CC/LED/830/ND EX39 G2 BB 6/1	54W	3000K	7500L	PLUBCG4KD6HX	On/off
CorePro	Corn Cob	559799	54CC/LED/840/ND EX39 G2 BB 6/1	54W	4000K	7800L	PLQQDHYERYIK	On/off
CorePro	Corn Cob	559807	54CC/LED/850/ND EX39 G2 BB 6/1	54W	5000K	8000L	PL0WQE0EUETN	On/off
CorePro	Corn Cob	559815	63CC/LED/830/ND EX39 G2 BB 6/1	63W	3000K	8600L	PLGURTP6CBD7	On/off
CorePro	Corn Cob	559823	63CC/LED/840/ND EX39 G2 BB 6/1	63W	4000K	9000L	PL4SHHFFO3O3	On/off
CorePro	Corn Cob	559831	63CC/LED/850/ND EX39 G2 BB 6/1	63W	5000K	9200L	PLNVP9A4RRM9	On/off
MasterClass	Corn Cob	559849	80CC/LED/840/ND EX39 G2 BB 3/1	80W	4000K	12000L	PQUK9KNG	On/off
MasterClass	Corn Cob	559856	80CC/LED/850/ND EX39 G2 BB 3/1	80W	5000K	12000L	PI1E7B7T	On/off
MasterClass	Corn Cob	559864	115CC/LED/840/ND EX39 G2 BB 3/1	115W	4000K	18000L	P1Y57QHXX	On/off
MasterClass	Corn Cob	559872	115CC/LED/850/ND EX39 G2 BB 3/1	115W	5000K	18000L	P2DSB5MY	On/off
MasterClass	Corn Cob	559880	150CC/LED/840/ND EX39 G2 BB 3/1	150W	4000K	24000L	PSM9Q4F2	On/off
MasterClass	Corn Cob	559898	150CC/LED/850/ND EX39 G2 BB 3/1	150W	5000K	24000L	PG629QXJ	On/off
MasterClass	HighBay	557231	145HB/LED/840/ND NB DL BB 4/1	145W	4000K	20000L	PWO9KPC0	-
MasterClass	HighBay	557264	145HB/LED/840/ND WB UDL BB 4/1	145W	4000K	20000L	PXXPFOBO	-
MasterClass	HighBay	557256	145HB/LED/850/ND NB DL BB 4/1	145W	5000K	20000L	PFKNP229	-
MasterClass	HighBay	557280	145HB/LED/850/ND WB UDL BB 4/1	145W	5000K	20000L	P5STHB25	-
MasterClass	HighBay	557298	165HB/LED/840/ND NB DL BB 4/1	165W	4000K	25000L	PQI2GZU1	-
MasterClass	HighBay	557314	165HB/LED/840/ND WB UDL BB 4/1	165W	4000K	25000L	P6KY4BMN	-
MasterClass	HighBay	557322	165HB/LED/850/ND NB DL BB 4/1	165W	5000K	25000L	PGN3YO87	-
MasterClass	HighBay	557348	165HB/LED/850/ND WB UDL BB 4/1	165W	5000K	25000L	PO7VGBJZ	-

Fixture Solutions





EvoGrid 2x4

EvoGrid 2x2

Day-Brite EvoGrid

A classic design, offering comfort and savings

An architecture appeal, robust design and performance which is the bench mark that other troffers are measured against.



Why choose EvoGrid?

- T Bar grids integral to the body for 15/16 and 9/16 grids.
- Integral sensors, Interact scalable and POE Ready . 0-10v and other open control protocols supported by our control partners.
- Integral sensors, wired and wireless and POE control options.
- Tunable options to support well-being and performance.

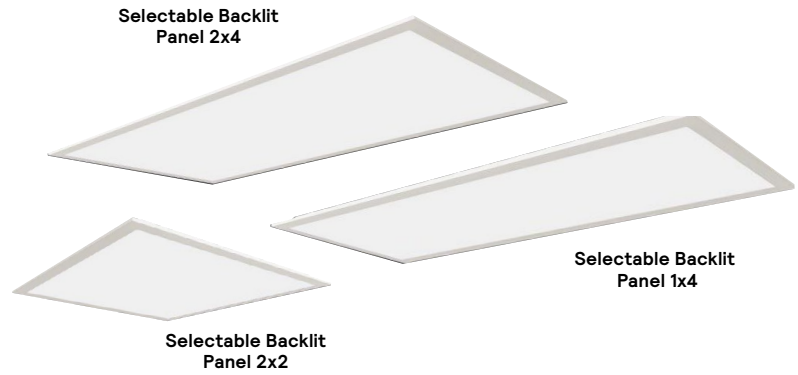
EvoGrid

Type	Part Number	Description	Watts	Color Temp	Lumens	DLC Code	Control Capability
2x2 troffer	2EVG30L835-2-D-UNV-DIM-SWZDT	2x2, 3000 Nominal Delivered Lumens, 80 CRI, 3500K, Diffuse	25-37W	3500K	3000L	-	Spacewise DT
2x2 troffer	2EVG30L840-2-D-UNV-DIM-SWZDT	2x2, 3000 Nominal Delivered Lumens, 80 CRI, 4000K, Diffuse	25-37W	4000K	3000L	PENHE593	Spacewise DT
2x4 troffer	2EVG38L835-4-D-UNV-DIM-SWZDT	2x4, 3800 Nominal Delivered Lumens, 80 CRI, 3500K, Diffuse, Standard Efficacy, Emergency Battery Backup	37-53W	3500K	3800L	-	Spacewise DT
2x4 troffer	2EVG38L840-4-D-UNV-DIM-SWZDT	2x4, 3800 Nominal Delivered Lumens, 80 CRI, 4000K, Diffuse, Standard Efficacy, Emergency Battery Backup	37-53W	4000K	3800L	-	Spacewise DT
2x2 troffer	2EVG30L835-2-D-UNV-DIM-SWZCS	2x2, 3000 Nominal Delivered Lumens, 80 CRI, 3500K, Diffuse	25-37W	3500K	3000L	-	Interact Pro scalable
2x2 troffer	2EVG30L840-2-D-UNV-DIM-SWZCS	2x2, 3000 Nominal Delivered Lumens, 80 CRI, 4000K, Diffuse	25-37W	4000K	3000L	-	Interact Pro scalable
2x4 troffer	2EVG38L835-4-D-UNV-DIM-SWZCS	2x4, 3800 Nominal Delivered Lumens, 80 CRI, 3500K, Diffuse, Standard Efficacy, Emergency Battery Backup	37-53W	3500K	3800L	-	Interact Pro scalable
2x4 troffer	2EVG38L840-4-D-UNV-DIM-SWZCS	2x4, 3800 Nominal Delivered Lumens, 80 CRI, 4000K, Diffuse, Standard Efficacy, Emergency Battery Backup	37-53W	4000K	3800L	-	Interact Pro scalable

Day-Brite Selectable Backlit Panel

Make the **easy selection**

Carry less stock with more options.



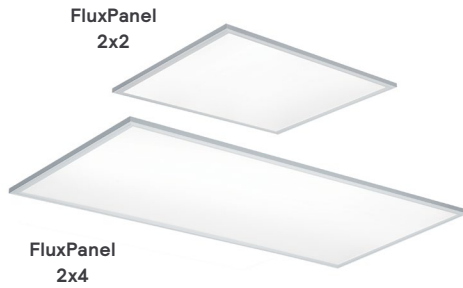
Why choose Selectable Backlit Panel?

- 3 color temperature selections, 3 wattage choices, and 3 sizes available, you can provide
- Numerous options to your customers, while keeping inventory levels and SKU count low
- Available for use in recessed, suspended and surface mount applications



Selectable Backlit Panel

Type	Part Number	Description	Watts	Color Temp	Lumens	DLC Code
Selectable Backlit Panel	1SBP3040L8CS-4-UNV-DIM	1x4, CCT and Lumen selectable panel, 0-10V dim (35K/40K/50K CCT, 30W/34W/39W selectable)	29-39W	3500K/4000K/5000K	3400L-4400L	PLQKCLTPT272
Selectable Backlit Panel	2SBP3040L8CS-2-UNV-DIM	2x2, CCT and Lumen selectable panel, 0-10V dim (35K/40K/50K CCT, 30W/33W/39W selectable)	28-39W	3500K/4000K/5000K	3200L-4200L	PLKH5HVC3HOT
Selectable Backlit Panel	2SBP3550L8CS-4-UNV-DIM	2x4, CCT and Lumen selectable panel, 0-10V dim (35K/40K/50K CCT, 35W/39W/51W selectable)	33-51W	3500K/4000K/5000K	4100L-5800L	PLF9P0ZMZAWR



Day-Brite FluxPanel

A good deal more than quality and long life

A low profile, luminaire that provides peace of mind and reliable lasting performance.



Why choose FluxPanel?

- Day-Brite Flux Panel will help bolster wellbeing and productivity without worrying about flicker and other undesired effects
- Welcoming spaces free of glare with color that remains consistent throughout the space and over time

FluxPanel

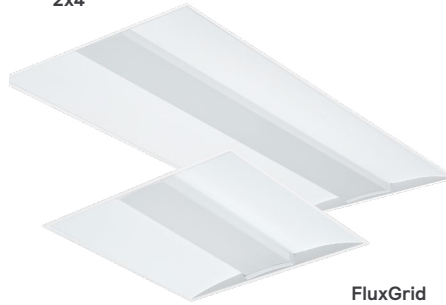
Type	Part Number	Description	Watts	Color Temp	Lumens	DLC Code
FluxPanel Gen2	1FPZ38B835-4-DS-UNV-DIM	FluxPanel Gen2, 1x4, 3800L, 3500K, 0-10V dim	30W	3500K	3800L	PL1445PGWPJQ
FluxPanel Gen2	1FPZ38B840-4-DS-UNV-DIM	FluxPanel Gen2, 1x4, 3800L, 4000K, 0-10V dim	30W	4000K	3800L	PLWL3118WTDM
FluxPanel Gen2	2FPZ38B835-2-DS-UNV-DIM	FluxPanel Gen2, 2x2, 3800L, 3500K, 0-10V dim	33W	3500K	3800L	PLVEDWZCFZYR
FluxPanel Gen2	2FPZ38B840-2-DS-UNV-DIM	FluxPanel Gen2, 2x2, 3800L, 4000K, 0-10V dim	33W	4000K	3800L	PLNUL3YZ9JHL
FluxPanel Gen2	2FPZ42B835-4-DS-UNV-DIM	FluxPanel Gen2, 2x4, 4200L, 3500K, 0-10V dim	40W	3500K	4200L	PLWNP4SE8JOD
FluxPanel Gen2	2FPZ42B840-4-DS-UNV-DIM	FluxPanel Gen2, 2x4, 4200L, 4000K, 0-10V dim	40W	4000K	4200L	PLCNQTQY3S2C
FluxPanel Gen2	2FPZ20L850-2-DS UNV-DIM	FluxPanel Gen2, 2x2, 2000L, 5000K, 0-10V dim	-	5000K	2000L	-
FluxPanel Gen2	2FPZ30L850-4-DS UNV-DIM	FluxPanel Gen2, 2x4, 3000L, 5000K, 0-10V dim	-	5000K	3000L	-
FluxPanel Gen2	2FPZ20L835-2-DS UNV-DIM	FluxPanel Gen2, 2x2, 2000L, 3500K, 0-10V dim	-	3500K	2000L	-
FluxPanel Gen2	2FPZ20L840-2-DS UNV-DIM	FluxPanel Gen2, 2x2, 2000L, 4000K, 0-10V dim	-	4000K	2000L	-
FluxPanel Gen2	2FPZ30L835-2-DS UNV-DIM	FluxPanel Gen2, 2x2, 3000L, 3500K, 0-10V dim	-	3500K	3000L	-
FluxPanel Gen2	2FPZ30L840-2-DS UNV-DIM	FluxPanel Gen2, 2x2, 3000L, 4000K, 0-10V dim	-	4000K	3000L	-
FluxPanel Gen2	2FPZ30L835-4-DS UNV-DIM	FluxPanel Gen2, 2x4, 3000L, 3500K, 0-10V dim	-	3500K	3000L	-
FluxPanel Gen2	2FPZ30L840-4-DS UNV-DIM	FluxPanel Gen2, 2x4, 3000L, 4000K, 0-10V dim	-	4000K	3000L	-
FluxPanel Gen2	2FPZ38L835-4-DS UNV-DIM	FluxPanel Gen2, 2x4, 3800L, 3500K, 0-10V dim	-	3500K	3800L	-
FluxPanel Gen2	2FPZ38L840-4-DS UNV-DIM	FluxPanel Gen2, 2x4, 3800L, 4000K, 0-10V dim	-	4000K	3800L	-

Day-Brite FluxGrid

Clear cut progress, lasting and consistent

Functional, efficient, and environmentally friendly illumination throughout the space.

FluxGrid
2x4



FluxGrid
2x2

Why choose FluxGrid?

- Discretely designed to blend seamlessly into your space
- Access to LED boards and drivers from below the ceiling increases maintenance convenience
- Diffused ribbed lens creates soft, even illumination
- Four lumen packages at 4 color temperatures
- Specification grade ceiling and configuration options



FluxGrid

Type	Part Number	Description	Watts	Color Temp	Lumens	DLC Code	Control Capability
2x4 troffer	2FGG43L835-4-D-UNV-DIM-SWZCS	2x4, 4300 Nominal Delivered Lumens, 80 CRI, 3500K, Diffuse	32/36/42/48/69W	3500K	4300L	PYPG3PW2	Interact Pro scalable
2x2 troffer	2FGG38L840-2-D-UNV-DIM-SWZCS	2x2, 3800 Nominal Delivered Lumens, 80 CRI, 4000K, Diffuse	27/33/34/45W	4000K	3800L	-	Interact Pro scalable
2x2 troffer	2FGG38L835-2-D-UNV-DIM-SWZCS	2x2, 3800 Nominal Delivered Lumens, 80 CRI, 3500K, Diffuse	27/33/34/45W	3500K	3800L	-	Interact Pro scalable
2x4 troffer	2FGG43L840-4-D-UNV-DIM-SWZCS	2x4, 4300 Nominal Delivered Lumens, 80 CRI, 4000K, Diffuse	32/36/42/48/69W	4000K	4300L	-	Interact Pro scalable
2x2 troffer	2FGG30L835-2-D-UNV-DIM-SWZCS	2x2, 3000 Nominal Delivered Lumens, 80 CRI, 3500K, Diffuse	27/33/34/45W	3500K	3000L	-	Interact Pro scalable
2x2 troffer	2FGG30L840-2-D-UNV-DIM-SWZCS	2x2, 3000 Nominal Delivered Lumens, 80 CRI, 4000K, Diffuse	27/33/34/45W	4000K	3000L	-	Interact Pro scalable
2x4 troffer	2FGG38L835-4-D-UNV-DIM-SWZCS	2x4, 3800 Nominal Delivered Lumens, 80 CRI, 3500K, Diffuse	32/36/42/48/69W	3500K	3800L	-	Interact Pro scalable
2x4 troffer	2FGG38L840-4-D-UNV-DIM-SWZCS	2x4, 3800 Nominal Delivered Lumens, 80 CRI, 4000K, Diffuse	32/36/42/48/69W	4000K	3800L	-	Interact Pro scalable
2x4 troffer	2FGG43L835-4-D-UNV-DIM-SWZDT	FluxGrid, 4300lm, 3500K, 4', 0-10V, SpaceWise	32/36/42/48/69W	3500K	4300L	PYPG3PW2	Spacewise DT
2x2 troffer	2FGG38L840-2-D-UNV-DIM-SWZDT	FluxGrid, 3800lm, 4000K, 2', 0-10V, SpaceWise	27/33/34/45W	4000K	3800L	PYI2O5CI	Spacewise DT
2x2 troffer	2FGG38L835-2-D-UNV-DIM-SWZDT	FluxGrid, 3800lm, 3500K, 2', 0-10V, SpaceWise	27/33/34/45W	3500K	3800L	PJ6KIGFL	Spacewise DT
2x4 troffer	2FGG43L840-4-D-UNV-DIM-SWZDT	FluxGrid, 4300lm, 4000K, 4', 0-10V, SpaceWise	36W	4000K	4300L	PSUNEMGF	Spacewise DT

FluxGrid

Type	Part Number	Description	Watts	Color Temp	Lumens	DLC Code	Control Capability
2x2 troffer	2FGG30L835-2-D-UNV-DIM-SWZDT	FluxGrid, 3000lm, 3500K, 2', 0-10V, SpaceWise	24W	3500K	3000L	PYPG3PW2	Spacewise DT
2x2 troffer	2FGG30L840-2-D-UNV-DIM-SWZDT	FluxGrid, 3000lm, 4000K, 2', 0-10V, SpaceWise	24W	4000K	3000L	P5K461W	Spacewise DT
2x4 troffer	2FGG38L835-4-D-UNV-DIM-SWZDT	FluxGrid, 3800lm, 3500K, 4', 0-10V, SpaceWise	32W	3500K	3800L	PZNSQRFQ	Spacewise DT
2x4 troffer	2FGG38L840-4-D-UNV-DIM-SWZDT	FluxGrid, 3800lm, 4000K, 4', 0-10V, SpaceWise	32W	4000K	3800L	PYI2O5CI	Spacewise DT
2x2 troffer	2FGXG38B835-2-D-UNV-DIM	FluxGrid Gen2, 3800lm, 3500K, 2' 0-10v 10%	36W	3500K	3800L	-	Interact Pro scalable, SpaceWise DT
2x2 troffer	2FGXG38B840-2-DS-UNV-DIM	FluxGrid Gen2, 3800lm, 4000K, 2' 0-10v, 10%	36W	4000K	3800L	-	Interact Pro scalable, SpaceWise DT
2x2 troffer	2FGXG38B850-2-D-UNV-DIM	FluxGrid Gen2, 3800lm, 5000K, 2' 0-10v, 10%	36W	5000K	3800L	-	Interact Pro scalable, SpaceWise DT
2x2 troffer	2FGXG38L835-2-D-UNV-DIM	FluxGrid Gen2, 3800lm, 3500K, 2' 0-10v, 1%	36W	3500K	3800L	-	Interact Pro scalable, SpaceWise DT
2x2 troffer	2FGXG38L835-2-D-UNV-DIM-SWZCS	FluxGrid Gen2, 3800lm, 3500K, 2' 0-10v, SWCS	36W	3500K	3800L	-	Interact Pro scalable,
2x2 troffer	2FGXG38L835-4-D-UNV-DIM	FluxGrid Gen2, 3800lm, 3500K, 4' 0-10v 10%	27W	3500K	3800L	-	Interact Pro scalable, SpaceWise DT
2x4 troffer	2FGXG38L835-4-D-UNV-DIM-SWZCS	FluxGrid Gen2, 3800lm, 3500K, 4' 0-10v, SWCS	27W	3500K	3800L	-	Interact Pro scalable,
2x4 troffer	2FGXG38L840-2-D-UNV-DIM	FluxGrid Gen2, 3800lm, 3500K, 0-10v, 2'	27W	3500K	3800L	-	Interact Pro scalable, SpaceWise DT
2x4 troffer	2FGXG38L840-2-D-UNV-DIM-SWZCS	FluxGrid Gen2, 3800lm, 3500K, 0-10v, 2', SWCS	27W	3500K	3800L	-	Interact Pro scalable,
2x4 troffer	2FGXG38L840-4-D-UNV-DIM-SWZCS	FluxGrid Gen2, 3800lm, 3500K, 0-10v, 4', SWCS	27W	4000K	3800L	-	Interact Pro scalable,
2x4 troffer	2FGXG42B830-4-D-UNV-DIM	FluxGrid Gen2, 4200lm, 3000K, 0-10v	30W	3000K	4200L	-	Interact Pro scalable, SpaceWise DT
2x4 troffer	2FGXG42B835-4-D-UNV-DIM	FluxGrid Gen2, 4200lm, 3000K, 0-10v	30W	3500K	4200L	-	Interact Pro scalable, SpaceWise DT
2x4 troffer	2FGXG42B840-4-DS-UNV-DIM	FluxGrid Gen2, 4200lm, 3000K, 0-10v	30W	4000K	4200L	-	Interact Pro scalable, SpaceWise DT
2x4 troffer	2FGXG42B840-4-D-UNV-DIM	FluxGrid Gen2, 4200lm, 3000K, 0-10v	30W	4000K	4200L	-	Interact Pro scalable, SpaceWise DT
2x4 troffer	2FGXG42B850-4-D-UNV-DIM	FluxGrid Gen2, 4200lm, 3000K, 0-10v	30W	5000K	4200L	-	Interact Pro scalable, SpaceWise DT
2x4 troffer	2FGXG45L835-2-D-UNV-DIM	FluxGrid Gen2, 4500lm, 3500K, 0-10v	34W	3500K	4500L	-	Interact Pro scalable, SpaceWise DT
2x2 troffer	2FGXG45L840-2-D-UNV-DIM	FluxGrid Gen2, 4500lm, 3500K, 0-10v	34W	4000K	4500L	-	Interact Pro scalable, SpaceWise DT
2x2 troffer	2FGXG48L835-4-D-UNV-DIM	FluxGrid Gen2, 4800lm, 3500K, 4' 0-10v	36W	3500K	4500L	-	Interact Pro scalable, SpaceWise DT
2x4 troffer	2FGXG48L840-4-DS-UNV-DIM	FluxGrid Gen2, 4800lm, 3500K, 4' 0-10v	36W	4000K	4500L	-	Interact Pro scalable, SpaceWise DT
2x4 troffer	2FGXG48L840-4-D-UNV-DIM	FluxGrid Gen2, 4800lm, 3500K, 4' 0-10v	36W	3500K	4500L	-	Interact Pro scalable, SpaceWise DT
2x4 troffer	2FGXG54L835-4-D-UNV-DIM	FluxGrid Gen2, 5400lm, 3500K, 4' 0-10v	41W	4000K	5400L	-	Interact Pro scalable, SpaceWise DT
2x4 troffer	2FGXG54L840-4-D-UNV-DIM	FluxGrid Gen2, 5400lm, 3500K, 4' 0-10v	41W	4000K	5400L	-	Interact Pro scalable, SpaceWise DT
2x4 troffer	2FGXG20L840-4-D-UNV-DIM-SWZCS	FluxGrid Gen2, 2000lm, 3500K, 4' 0-10v, SWCS	22W	4000K	2000L	-	Interact Pro scalable, SpaceWise DT
2x4 troffer	2FGXG20L835-4-D-UNV-DIM-SWZCS	FluxGrid Gen2, 2000lm, 3500K, 4' 0-10v, SWCS	22W	3500K	2000L	-	Interact Pro scalable
2x4 troffer	2FGXG20L835-2-D-UNV-DIM-SWZCS	FluxGrid Gen2, 2000lm, 3500K, 4' 0-10v, SWCS	22W	3500K	2000L	-	Interact Pro scalable
2x2 troffer	2FGXG20L835-2-RS-UNV-DIM-SWZCS	FluxGrid Gen2, 2000lm, 3500K, 4' 0-10v, SWCS	22W	3500K	2000L	-	Interact Pro scalable
2x2 troffer	2FGXG-15H840-2-RS-UNV-DIM-SWZCS	FluxGrid Gen2, 1500lm, 3500K, 2' 0-10v, SWCS	11W	4000K	1500L	-	Interact Pro scalable
2x2 troffer	2FGXG-15HL835-2-RS-UNV-DIM-SWZCS	FluxGrid Gen2, 1500lm, 3500K, 2' 0-10v, SWCS	11W	3500K	1500L	-	Interact Pro scalable

Lightolier Downlights

Add style and light to any space easily

Hassle-free install will save you time and frustration on the job site. You may not even need to open your toolbox.



Why choose Lightolier Downlights?

- The Retrofit downlight utilizes existing frames to make replacing old downlighting and upgrading to LED, a truly easy task
- Provides an easy and quick downlight solution without the traditional frame and reflector
- Perfect for installation in low plenum and existing shallow space ceilings
- The CCT selector feature in the Flat Downlight Select makes it easy to choose CCT at the time of installation



Downlights

Type	Part Number	Description	Watts	Color Temp	Lumens	DLC Code
4" Retrofit Downlight	RD4R089301W	Retrofit DL, 4" Round, 900lm, 90 CRI, 3000K, 120V	13W	3000K	1000/1500/2300L	RD4R089301W
5/6" Retrofit Downlight	RD5R129301W	Retrofit DL, 5/6" Round, 1400lm, 90 CRI, 3000K, 120V	18.5W	3000K	1500/2000/3000L	RD5R129301W
5" Surface Downlight	SD5R079301W	Surface Mount, 5" Round, 700lm, 90 CRI, 3000K, 120V	10.5W	3000K	1500/2000/3000L	SD5R079301W
7" Surface Downlight	SD7R099301W	Surface Mount, 7" Round, 1000lm, 90 CRI, 3000K, 120V	15.5W	3000K	1500/2000/3000L	SD7R099301W
Commercial Retrofit DL DualSelect	CR4RLMCCT	4" Round 500/700/1000lm 90CRI Selectable CCT 30-35-40K 120-347V White	max. 12W	3000/3500/4000K	500lm/700lm/1000lm	CR4RLMCCT (energy star)
Commercial Retrofit DL DualSelect	CR6RLMCCT	6" Round 700/1000/1500lm 90CRI Selectable CCT 30-35-40K 120-347V White	max. 17W	3000/3500/4000K	700lm/1000lm/1500lm	CR6RLMCCT (energy star)
Commercial Retrofit DL DualSelect	CR8RLMCCT	8" Round 1000/1500/2000lm 90CRI Selectable CCT 30-35-40K 120-347V White	max. 21W	3000/3500/4000K	1000lm/1500lm/2000lm	CR8RLMCCT (energy star)
Commercial Retrofit DL DualSelect	CR10RLMCCT	10" Round 2000/2500/3000lm 90CRI Selectable CCT 30-35-40K 120-347V White	max. 32W	3000/3500/4000K	2000lm/2500lm/3000lm	CR10RLMCCT (energy star)
Flat Downlight Select	FD4R4CCT	Disk 4" Round 700 90 27/30/40/50K 120V	11W	2700/3000/4000/5000K	700L	FD4R4CCT (energy star)
Flat Downlight Select	FD6R4CCT	Disk 6" Round 900 90 27/30/40/50K 120V	13.5W	2700/3000/4000/5000K	900L	FD6R4CCT (energy star)



Surface Downlight
5" & 7"



Retrofit Downlight



Flat Downlight Select

Downlights Accessories

Type	Part Number	Description	Watts	Color Temp	Lumens	DLC Code
Flat Downlight Select Accessory	FD4NCP	Flat DL 4" NC Plate	-	-	-	-
Flat Downlight Select Accessory	FD6NCP	Flat DL 6" NC Plate	-	-	-	-
Flat Downlight Select Accessory	FD10EC	Flat DL 10ft Extension Cable	-	-	-	-
Flat Downlight Select Accessory	FD4TBK	Flat DL 4" Trim Black	-	-	-	-
Flat Downlight Select Accessory	FD6TBK	Flat DL 6" Trim Black	-	-	-	-
Flat Downlight Select Accessory	FD4TBN	Flat DL 4" Trim Brushed Nickel	-	-	-	-
Flat Downlight Select Accessory	FD6TBN	Flat DL 6" Trim Brushed Nickel	-	-	-	-

FluxStream Strip



FluxStream Wrap



FluxStream Industrial



Day-Brite FluxStream

Real convenience for your operation's success

Tough and dependable luminaires designed for ease of handling and flexibility.

Why choose FluxStream?

- Tough and dependable, the LED Linear family includes strip, wraparound, and industrial luminaires
- Efficacy up to 133 lumens per watt (Industrial)
- Before, during and after installation, you can trust them to help you quickly complete projects without hassles or troubleshooting, while delivering consistent comfort and long-term energy savings
- Simple installation



FluxStream

Type	Part Number	Description	Watts	Color Temp	Lumens	DLC Code	Control Capability
2' Strip	FSS220L840-UNV-DIM	2' FluxStream Strip	17W	4000K	2000L	P81A9ZVK	Interact, Spacewise
2' Strip	FSS220L835-UNV-DIM	2' FluxStream Strip	17W	3500K	2000L	PCKM7D5F	Interact, Spacewise
3' Strip	FSS330L840-UNV-DIM	3' FluxStream Strip	26W	4000K	3000L	PBWD1TGH	Interact, Spacewise
3' Strip	FSS330L835-UNV-DIM	3' FluxStream Strip	26W	3500K	3000L	PR8HMY7V	Interact, Spacewise
4' Strip	FSSEZ440L840-UNV-DIM	4' FluxStream EZ Strip	31W	4000K	4000L	POIHJ8RV	-
4' Strip	FSSEZ440L840-UNV	4' FluxStream EZ Strip	32W	4000K	4000L	PVX217M4	-
4' Strip	FSSEZ440L835-UNV-DIM	4' FluxStream EZ Strip	32W	3500K	4000L	PURORZCZ	-
4' Strip	FSSEZ440L835-UNV	4' FluxStream EZ Strip	32W	3500K	4000L	P5UKPWRT	-
4' Strip	FSSEZ440L830-UNV-DIM	4' FluxStream EZ Strip	32W	3000K	4000L	PVWA1NVK	-
4' Strip	FSS440L830-UNV	4' FluxStream Strip	30W	3000K	4,000L	PMTXRMQQ	Interact, Spacewise
4' Strip	FSS440L840-UNV-DIM	4' FluxStream Strip	31W	4000K	4000L	PGC3XP1W	Interact, Spacewise
4' Strip	FSS440L835-UNV-DIM	4' FluxStream Strip	31W	3500K	4000L	PCB52PCA	Interact, Spacewise
4' Strip	FSS440L840-UNV-DIM-EMLED	4' FluxStream Strip with emergency	31W	4000K	4000L	PR3Y8NQS	Interact, Spacewise
4' Strip	FSS440L835-UNV-DIM-EMLED	4' FluxStream Strip with emergency	31W	3500K	4000L	PKFR4JW9	Interact, Spacewise
4' Strip	FSS455L840-UNV-DIM	4' FluxStream Strip	45W	4000K	5500L	PF5H96K7	Interact, Spacewise
4' Strip	FSS455L835-UNV-DIM	4' FluxStream Strip	45W	3500K	5500L	PZK4MKNS	Interact, Spacewise
4' Strip	FSS470L840-UNV-DIM	4' FluxStream Strip	58W	4000K	7000L	PM9HFVWU	Interact, Spacewise
8' Strip	FSSEZ880L840-UNV-DIM	8' FluxStream EZ Strip	62W	4000K	8,000L	PO9T5KZJ	-
8' Strip	FSS8110L840-UNV-DIM	8' FluxStream Strip	91W	4000K	11000L	PC5EKZDZ	Interact, Spacewise
8' Strip	FSS880L840-UNV-DIM	8' FluxStream Strip	64W	4000K	8000L	P7HV92D1	Interact, Spacewise



FluxStream

Type	Part Number	Description	Watts	Color Temp	Lumens	DLC Code	Control Capability
8' Strip	FSS880L835-UNV-DIM	8' FluxStream Strip	64W	3500K	8000L	P3UB1391	Interact, Spacewise
4' Industrial Strip	FSI440L840-UNV-DIM	4' FluxStream Industrial	31W	4000K	4000L	PHNTFNZP	Interact, Spacewise
4' Industrial Strip	FSI455L840-UNV-DIM	4' FluxStream Industrial	45W	4000K	5500L	PP13TCMP	Interact, Spacewise
8' Industrial Strip	FSI8110L840-UNV-DIM	8' FluxStream Industrial	91W	4000K	11000L	P8HNNYDC	Interact, Spacewise
Linear strip	FSS440L840-UNV-DIM-SWZDT	FluxStream Strip, 4', 4000lm, 4000K, with SpaceWise	30W	4000K	4000L	PUH34W60	Spacewise DT
Linear strip	FSS440L835-UNV-DIM-SWZDT	FluxStream Strip, 4', 4000lm, 3500K, with SpaceWise	30W	3500K	4000L	PCB52PCA	Spacewise DT
Linear strip	FSS440L850-UNV-DIM-SWZDT	FluxStream Strip, 4', 4000lm, 5000K, with SpaceWise	30W	5000K	4000L	PWAUN7WE	Spacewise DT
Linear strip	FSS440L840-UNV-DIM-SWZCS	FluxStream Strip, 4', 4000lm, 4000K, with Interact Pro scalable	30W	4000K	4000L	-	Interact Pro scalable
Linear strip	FSS440L835-UNV-DIM-SWZCS	FluxStream Strip, 4', 4000lm, 3500K, with Interact Pro scalable	30W	3500K	4000L	-	Interact Pro scalable
Linear strip	FSS440L850-UNV-DIM-SWZCS	FluxStream Strip, 4', 4000lm, 5000K, with Interact Pro scalable	30W	5000K	4000L	-	Interact Pro scalable
Linear wraparound	FSW440L840-UNV-DIM-SWZDT	FluxStream Wrap, 4', 4000lm, 4000K, with SpaceWise	31.5W	4000K	4000L	P6A82G3Y	Spacewise DT
Linear wraparound	FSW430L840-UNV-DIM-SWZDT	FluxStream Wrap, 4', 3000lm, 4000K, with SpaceWise	31.5W	4000K	3000L	PERC7NYA	Spacewise DT
Linear wraparound	FSW430L835-UNV-DIM-SWZDT	FluxStream Wrap, 4', 3000lm, 3500K, with SpaceWise	31.5W	3500K	3000L	P7K0HLZC	Spacewise DT
Linear wraparound	FSW440L835-UNV-DIM-SWZDT	FluxStream Wrap, 4', 4000lm, 3500K, with SpaceWise	31.5W	3500K	4000L	P5VTBZX5	Spacewise DT
Linear wraparound	FSW440L840-UNV-DIM-SWZCS	FluxStream Wrap, 4', 4000lm, 4000K, with Interact Pro scalable	31.5W	4000K	4000L	-	Interact Pro scalable
Linear wraparound	FSW430L840-UNV-DIM-SWZCS	FluxStream Wrap, 4', 3000lm, 4000K, with Interact Pro scalable	31.5W	4000K	3000L	-	Interact Pro scalable
Linear wraparound	FSW430L835-UNV-DIM-SWZCS	FluxStream Wrap, 4', 3000lm, 3500K, with Interact Pro scalable	31.5W	3500K	3000L	-	Interact Pro scalable
Linear wraparound	FSW440L835-UNV-DIM-SWZCS	FluxStream Wrap, 4', 4000lm, 3500K, with Interact Pro scalable	31.5W	3500K	4000L	-	Interact Pro scalable

Day-Brite V3W Vaporlume

Cover your wet location needs with **ease and confidence**

For the highest output and most demanding applications.



Why choose Vaporlume?

- Up to 10,000 lumens
- IP65 rating standard, IP67 optional
- NSF rated
- Optional motion sensor for energy savings
- WHP optics with prismatic acrylic lens to meet DLC garage requirement
- Higher output per foot at a lower price
- Tamper resistant hardware optional



Vaportight

Type	Part Number	Description	Watts	Color Temp	Lumens	DLC Code	Control Capability
4' Vaportight	V3W451L840-UNV-DIM	4' V3W Vaporlume LED	35W	4000K	5100L	PC7ZWZCD	Interact Industry, SNH200 SpaceWise



FBY Highbay

Day-Brite FBY high bay

Versatility in form and function

Reliable and cost-friendly solutions for your big industrial or institutional spaces.



Why choose FBY high bay?

- Versatile fixture ideal for a variety of spaces including warehouses, big box retail and school gymnasiums
- Components are DesignLights Consortium qualified
- Simple installation

FBY Highbay

Type	Part Number	Description	Watts	Color Temp	Lumens	DLC Code	Controls Capability
FBY Highbay	FBY12L840-UNV	12,000lm Linear Highbay	88W	4000K	12000L	P74X1Z79	Interact Industry, SNH200 SpaceWise
FBY Highbay	FBY12L850-UNV	12,000lm Linear Highbay	88W	5000K	12000L	POHRZZH3	Interact Industry, SNH200 SpaceWise
FBY Highbay	FBY18L840-UNV	18,000lm Linear Highbay	133W	4000K	18000L	PB6089U5	Interact Industry, SNH200 SpaceWise
FBY Highbay	FBY18L850-UNV	18,000lm Linear Highbay	133W	5000K	18000L	PY8IPZZ7	Interact Industry, SNH200 SpaceWise
FBY Highbay	FBY24L840-UNV	24,000lm Linear Highbay	177W	4000K	24000L	PQQXYLDK	Interact Industry, SNH200 SpaceWise
FBY Highbay	FBY24L850-UNV	24,000lm Linear Highbay	177W	5000K	24000L	P4EV6OV9	Interact Industry, SNH200 SpaceWise
FBY Highbay	FBY30L840-UNV	30,000lm Linear Highbay	208W	4000K	30000L	PNS4AZDC	Interact Industry, SNH200 SpaceWise
FBY Highbay	FBY36L840-UNV	36,000lm Linear Highbay	268W	4000K	36000L	P9G8K59A	Interact Industry, SNH200 SpaceWise
FBY Highbay	FBY60L840-UNV	60,000lm Linear Highbay	423W	4000K	60000L	PI7ZYPG9	Interact Industry, SNH200 SpaceWise
FBY Highbay	FBY24L850-UNV-LFA-SNH200	24,000lm Linear Highbay	178W	5000K	24000L	P6K46Q8W	SNH200 SpaceWise
FBY Highbay	FBY24L850-UNV-SNH200	24,000lm Linear Highbay	188W	5000K	24000L	P4EV6OV9	SNH200 SpaceWise

Day-Brite FCY high bay

A cost friendly combination of quality construction and solid performance



Why choose FCY high bay?

- Color selectable (4000/5000K)
- Ideally suited for high ceiling applications including industrial locations, warehouses and gymnasiums
- Durable low profile design



FCY Highbay

Type	Part Number	Description	Watts	Color Temp	Lumens	DLC Code	Controls Capability
FCY Highbay	FCY15L8CST-UNV-DIM	Linear Highbay 15L, Selectable CCT 40/50K, LENS, 0-10V dim	107W	4000K/5000K	14883L	PLHT25EGCYWF	0-10V dim
FCY Highbay	FCY22L8CST-UNV-DIM	Linear Highbay 22L, Selectable CCT 40/50K, LENS, 0-10V dim	164W	4000K/5000K	22169L	PL856GYTR39P	0-10V dim
FCY Highbay	FCY29L8CST-UNV-DIM	Linear Highbay 29L, Selectable CCT 40/50K, LENS, 0-10V dim	213W	4000K/5000K	28859L	PLRB40LU91Q7	0-10V dim
FCY Highbay	FCY-SBK	Linear Highbay Surface Bracket Kit	-	-	-	-	-
FCY Highbay	FCY-WG	Linear Highbay Wire Guard for 15L/22L	-	-	-	-	-
FCY Highbay	FCY-PENHGR	Linear Highbay Pendant Hanger Kit	-	-	-	-	-
FCY Highbay	FCY-WG29	Linear Highbay Wire Guard for 29L	-	-	-	-	-
FCY Highbay	MD360	Motion Detector, 120/277V, Use with FBX, FCY High Bays	-	-	-	-	-



Stonco SlimFlood

Illuminate with discreet and modern style

The best value for discreet and modern design on your floodlighting projects.



Why choose SlimFlood?

- Complete family of LED floodlights ideal for illuminating signs, building facades or other dark areas
- Can be mounted on the ground, wall, or pole-mounted
- All sizes arrive fully assembled and ready to install
- Fade-resistant, textured bronze finish with tempered glass lens that is heat and impact resistant
- IP65s rated, 5 year limited warranty

SlimFlood

Type	Part Number	Description	Watts	Color Temp	Lumens	DLC Code
Slim Flood	TF10-NW-G1-K-FL-8-BZ	SlimFlood, 10W, 1,000lm, 4000K, Knuckle Mount/Yoke Mount	10W	4000K	1000L	P1XWE6P8
Slim Flood	TF10-WW-G1-K-FL-8-BZ	SlimFlood, 10W, 1,000lm, 3000K, Knuckle Mount/Yoke Mount	10W	3000K	1000L	P79NL1NB
Slim Flood	TF10-CW -G1-K-FL-8-BZ	SlimFlood, 10W, 1,000lm, 5000K, Knuckle Mount/Yoke Mount	10W	5000K	1000L	P77ABQAK
Slim Flood	TF30-NW-G1-K-FL-8-BZ	SlimFlood, 30W, 3,000lm, 4000K, Knuckle Mount/Yoke Mount	30W	4000K	3000L	PEFG1IBX
Slim Flood	TF30-WW-G1-K-FL-8-BZ	SlimFlood, 30W, 3,000lm, 3000K, Knuckle Mount/Yoke Mount	30W	3000K	3000L	PPBFX21U
Slim Flood	TF30-CW -G1-K-FL-8-BZ	SlimFlood, 30W, 3,000lm, 5000K, Knuckle Mount/Yoke Mount	30W	5000K	3000L	PEK34V66
Slim Flood	TF50-NW-G1-K-FL-8-BZ	SlimFlood, 50W, 5,000lm, 4000K, Knuckle Mount/Yoke Mount	50W	4000K	5000L	P7133BPN
Slim Flood	TF50-WW-G1-K-FL-8-BZ	SlimFlood, 50W, 5,000lm, 3000K, Knuckle Mount/Yoke Mount	50W	3000K	5000L	PGWTCTG3
Slim Flood	TF50-CW -G1-K-FL-8-BZ	SlimFlood, 50W, 5,000lm, 5000K, Knuckle Mount/Yoke Mount	50W	5000K	5000L	PP8JYB5J
Slim Flood	TF100-NW-G1-Y-FL-8-BZ	SlimFlood, 100W, 10,000lm, 4000K, Yoke Mount	100W	4000K	10000L	P9FAGGBW
Slim Flood	TF100-CW -G1-Y-FL-8-BZ	SlimFlood, 100W, 10,000lm, 5000K, Yoke Mount	100W	5000K	10000L	P2DUEIKL
Slim Flood	TF150-NW-G1-Y-FL-8-BZ	SlimFlood, 150W, 15,000lm, 4000K, Yoke Mount	150W	4000K	15000L	P9U6P4CG
Slim Flood	TF150-CW -G1-Y-FL-8-BZ	SlimFlood, 150W, 15,000lm, 5000K, Yoke Mount	150W	5000K	15000L	PO0SU0OE
Slim Flood	TF200-NW-G1-Y-FL-8-BZ	SlimFlood, 200W, 20,000lm, 4000K, Yoke Mount	200W	4000K	20000L	PZ61R1XA
Slim Flood	TF200-CW -G1-Y-FL-8-BZ	SlimFlood, 200W, 20,000lm, 5000K, Yoke Mount	200W	5000K	20000L	P630S7HC

Stonco Area Light

Enhancing a sense of security for the long haul

Energy-saving technology ideal for pole mounted lighting applications.



Why choose Area light?

- Budget-friendly, high quality area lighting for parking and outdoor spaces
- LED technology will save up to 68% energy over HID¹
- Mounts standard to round or square pole
- Durable aluminum construction
- Lifetime >54,000 hours
- 5 year limited warranty



Area light

Type	Part Number	Description	Watts	Color Temp	Lumens	DLC Code
Area light Select	AL70-NW-G2-AR-3-8-FAWS-TLRD3-BZ	Area light, 4000K, type 3, Receptical 3 pin photocell, selectable wattage 46-55-63-71W	46/55/63/71W	4000K	7600/8900/10100/11400	PL7WVV3YZRQP
Area light Select	AL70-NW-G2-AR-4-8-FAWS-TLRD3-BZ	Area light, 4000K, type 4, Receptical 3 pin photocell, selectable wattage 46-55-63-71W	46/55/63/71W	4000K	7900/9300/10500/11900	PLG8QRKEW90F
Area light Select	AL70-NW-G2-AR-5-8-FAWS-TLRD3-BZ	Area light, 4000K, type 5, Receptical 3 pin photocell, selectable wattage 46-55-63-71W	46/55/63/71W	4000K	7700/9100/10300/11600	PLKGNWTP5F9W
Area light Select	AL70-NW-G2-AR-3-8-FAWS-IMRI-TLRD3-BZ	Area light, 4000K, type 3, Receptical 3 pin photocell and motion response, selectable wattage 46-55-63-71W	46/55/63/71W	4000K	7600/8900/10100/11400	PLNDP4S06UMU
Area light Select	AL70-NW-G2-AR-4-8-FAWS-IMRI-TLRD3-BZ	Area light, 4000K, type 4, Receptical 3 pin photocell and motion response, selectable wattage 46-55-63-71W	46/55/63/71W	4000K	7900/9300/10500/11900	PLWMRTRPGQYO
Area light Select	AL70-NW-G2-AR-5-8-FAWS-IMRI-TLRD3-BZ	Area light, 4000K, type 5, Receptical 3 pin photocell and motion response, selectable wattage 46-55-63-71W	46/55/63/71W	4000K	7700/9100/10300/11600	PLZNO2Q04WWC
Area light Select	AL150-NW-G2-AR-3-8-FAWS-TLRD3-BZ	Area light, 4000K, type 3, Receptical 3 pin photocell, selectable wattage 96-112-126-142W	96/112/126/142W	4000K	15000/17500/19300/21500	PL39KGUHYF3L
Area light Select	AL150-NW-G2-AR-4-8-FAWS-TLRD3-BZ	Area light, 4000K, type 4, Receptical 3 pin photocell, selectable wattage 96-112-126-142W	96/112/126/142W	4000K	15900/18300/20300/22500	PLP234LJ1FFX



Area light

Type	Part Number	Description	Watts	Color Temp	Lumens	DLC Code
Area light Select	AL150-NW-G2-AR-5-8-FAWS-TLRD3-BZ	Area light, 4000K, type 5, Receptical 3 pin photocell, selectable wattage 96-112-126-142W	96/112/126/142W	4000K	15500/17800/19800/22000	PLZNO2Q04WWC
Area light Select	AL150-NW-G2-AR-3-8-FAWS-IMRI-TLRD3-BZ	Area light, 4000K, type 3, Receptical 3 pin photocell and motion response, selectable wattage 96-112-126-142W	96/112/126/142W	4000K	15000/17500/19300/21500	PL39KGUHYF3L
Area light Select	AL150-NW-G2-AR-4-8-FAWS-IMRI-TLRD3-BZ	Area light, 4000K, type 4, Receptical 3 pin photocell and motion response, selectable wattage 96-112-126-142W	96/112/126/142W	4000K	15900/18300/20300/22500	-
Area light Select	AL150-NW-G2-AR-5-8-FAWS-IMRI-TLRD3-BZ	Area light, 4000K, type 5, Receptical 3 pin photocell and motion response, selectable wattage 96-112-126-142W	96/112/126/142W	4000K	15500/17800/19800/22000	-
Area light Select	AL-SF-G2-BZ	Area light, Slip fitter mount accessory	-	-	-	-

Stonco Slim Wall Pack

Sleek and slim, with energy saving illumination

Efficacies up to 110 lumens per watt.



Why choose Slim Wall Pack?

- Budget-friendly, discreet fixture for a wide variety of outdoor spaces
- Energy efficient fixture that delivers up to 110 lumens per watt
- 3 size options: 15, 30 or 50 watt
- Slim profile, just over 4 inches
- Durable construction of die-cast aluminum with a UV stabilized lens and stainless steel hardware
- 5 year limited warranty



Slim wall pack

Type	Part Number	Description	Watts	Color Temp	Lumens	DLC Code
Slim WallPack	PW15-NW-G1-8-BZ	Low Profile Wall Mount, 15W	15W	4000K	1600L	PLLYCAEMW1IY
Slim WallPack	PW30-NW-G1-8-BZ	Low Profile Wall Mount, 30W	30W	4000K	3000L	PLCR2YVQ77WS
Slim WallPack	PW50-NW-G1-8-BZ	Low Profile Wall Mount, 50W	50W	4000K	5100L	PLSOXV0FQOLH



Stonco Dusk to Dawn

Brighten spaces evenly, without glare

A great performing LED light for general purpose areas that fits your budget.



Why choose Dusk to Dawn?

- Excellent choice for general areas, where lighting can enhance security
- Provides up to 70% energy savings over HID
- Refracted lens design spreads light evenly and significantly reduces glare
- Direct mount or arm mount.
- Sturdy, fade and abrasion resistant, built of a one-piece die-cast aluminum housing

Dusk to dawn

Type	Part Number	Description	Watts	Color Temp	Lumens	DLC Code
DTD Light	DTD40-NW-G3-AR-5-TLRPC-1-GY3S	Dusk to Dawn Gen-3, 40W, 4000K, Photocell	40W	4000K	4900L	PLWQ8NY813BG
DTD Light	DTDARMGY3S	Dusk to Dawn Arm Accessory	-	-	-	-

Stonco Garage and Canopy

Compact and efficient,
built to last

Slim and durable with a light-weight design.



Why choose Garage & Canopy?

- Complete family of LED floodlights ideal for illuminating signs, building facades or other dark areas
- Can be mounted on the ground, wall, or pole-mounted
- All sizes arrive fully assembled and ready to install
- Fade-resistant, textured bronze finish with tempered glass lens that is heat and impact resistant
- IP66 rated, 5 year limited warranty



Garage & Canopy

Type	Part Number	Description	Watts	Color Temp	Lumens	DLC Code
Garage and Canopy Dualselect	GC60-SCT-G2-SM-5-10-BZ	Garage & Canopy DualSelect, selectable wattage and CCT 28-40-60W / 30K-40K-50K	2840/60W	3000K 4000K 5000K	4100-8350L	PLW6WCVDWJTW
Garage and Canopy Dualselect	GC90-SCT-G2-SM-5-10-BZ	Garage & Canopy DualSelect, selectable wattage and CCT 70-80-90W / 30K-40K-50K	70/80/90W	3000K 4000K 5000K	9800-12850L	PLLYV113KPSL



LumeC RoadFocus

Enhance your roadways

Designed to replace 70–400W HID luminaires and provide uniform, high performance LED illumination.



Why choose RoadFocus?

- Consistent, familiar aesthetics by day, with powerful brilliant white LED illumination at night
- Increased system life and minimizes energy consumption for an expedited return on your investment
- Broadest set of stand-alone to connected LED Roadway lighting controls solutions available to further customize your lighting - now or in the future

RoadFocus

Type	Part Number	Description	Watts	Color Temp	Lumens	DLC Code	Controls Capability
Roadway LED Cobrahead	RFS 60W16LED 4K G2 R3M UNV DMG FAWS RCD7 GY3	RoadFocus small, Type 3 Medium Distribution, 120 - 277V, Dimming Driver, Field Adjustable Wattage Selector, 7 pin receptacle, Grey Finish	61W	4000K	6907L	Standard, RRRUYYP	PhotoCell, Interact City
Roadway LED Cobrahead	RFS 60W16LED 4K G2 R3M UNV DMG FAWS RCD7 BR	RoadFocus small, Type 3 Medium Distribution, 120 - 277V, Dimming Driver, Field Adjustable Wattage Selector, 7 pin receptacle, Bronze Finish	61W	4000K	6907L	Standard, RRRUYYP	PhotoCell, Interact City
Roadway LED Cobrahead	RFS 60W16LED 3K G2 R3M UNV DMG FAWS RCD7 GY3	RoadFocus small, Type 3 Medium Distribution, 120 - 277V, Dimming Driver, Field Adjustable Wattage Selector, 7 pin receptacle, Grey Finish	61W	3000K	6480L	Standard, RRRUYYP	PhotoCell, Interact City
Roadway LED Cobrahead	RFS 60W16LED 3K G2 R3M UNV DMG FAWS RCD7 BR	RoadFocus small, Type 3 Medium Distribution, 120 - 277V, Dimming Driver, Field Adjustable Wattage Selector, 7 pin receptacle, Bronze Finish	61W	3000K	6480L	Standard, RRRUYYP	PhotoCell, Interact City
Roadway LED Cobrahead	RFS108W32LED 4K G2 R3M UNV DMG FAWS RCD7 GY3	RoadFocus small, Type 3 Medium Distribution, 120 - 277V, Dimming Driver, Field Adjustable Wattage Selector, 7 pin receptacle, Grey Finish	108W	4000K	12984L	Standard, RRRVSO	PhotoCell, Interact City
Roadway LED Cobrahead	RFS108W32LED 4K G2 R3M UNV DMG FAWS RCD7 BR	RoadFocus small, Type 3 Medium Distribution, 120 - 277V, Dimming Driver, Field Adjustable Wattage Selector, 7 pin receptacle, Bronze Finish	108W	4000K	12984L	Standard, RRRVSO	PhotoCell, Interact City
Roadway LED Cobrahead	RFS108W32LED 3K G2 R3M UNV DMG FAWS RCD7 GY3	RoadFocus small, Type 3 Medium Distribution, 120 - 277V, Dimming Driver, Field Adjustable Wattage Selector, 7 pin receptacle, Grey Finish	108W	3000K	12181L	Standard, RRRVSO	PhotoCell, Interact City
Roadway LED Cobrahead	RFS 108W32LED 3K G2 R3M UNV DMG FAWS RCD7 BR	RoadFocus small, Type 3 Medium Distribution, 120 - 277V, Dimming Driver, Field Adjustable Wattage Selector, 7 pin receptacle, Bronze Finish	108W	3000K	12181L	Standard, RRRVSO	PhotoCell, Interact City



RoadFocus

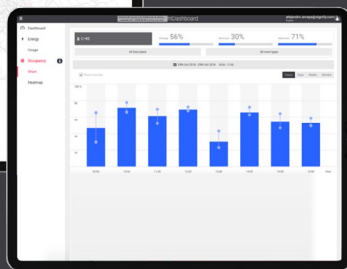
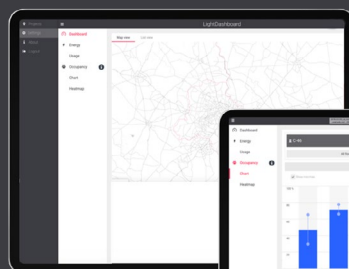
Type	Part Number	Description	Watts	Color Temp	Lumens	DLC Code	Controls Capability
Roadway LED Cobrahead	RFS 65W20LED 4K G2 R3M UNV DMG FAWS RCD7 GY3	RoadFocus small, Type 3 Medium Distribution, 120 - 277V, Dimming Driver, Field Adjustable Wattage Selector, 7 pin receptacle, Grey Finish	64W	4000K	7869L	Premium, RRRVOR	PhotoCell, Interact City
Roadway LED Cobrahead	RFS 65W20LED 4K G2 R3M UNV DMG FAWS RCD7 BR	RoadFocus small, Type 3 Medium Distribution, 120 - 277V, Dimming Driver, Field Adjustable Wattage Selector, 7 pin receptacle, Bronze Finish	64W	4000K	7869L	Premium, RRRVOR	PhotoCell, Interact City
Roadway LED Cobrahead	RFS 65W20LED 3K G2 R3M UNV DMG FAWS RCD7 GY3	RoadFocus small, Type 3 Medium Distribution, 120 - 277V, Dimming Driver, Field Adjustable Wattage Selector, 7 pin receptacle, Grey Finish	64W	3000K	7482L	Premium, RRRVOR	PhotoCell, Interact City
Roadway LED Cobrahead	RFS 65W20LED 3K G2 R3M UNV DMG FAWS RCD7 BR	RoadFocus small, Type 3 Medium Distribution, 120 - 277V, Dimming Driver, Field Adjustable Wattage Selector, 7 pin receptacle, Bronze Finish	64W	3000K	7482L	Premium, RRRVOR	PhotoCell, Interact City
Roadway LED Cobrahead	RFS 100W40LED 4K G2 R3M UNV DMG FAWS RCD7 GY3	RoadFocus small, Type 3 Medium Distribution, 120 - 277V, Dimming Driver, Field Adjustable Wattage Selector, 7 pin receptacle, Grey Finish	101W	4000K	12930L	Premium, RRRVOR	PhotoCell, Interact City
Roadway LED Cobrahead	RFS 100W40LED 4K G2 R3M UNV DMG FAWS RCD7 BR	RoadFocus small, Type 3 Medium Distribution, 120 - 277V, Dimming Driver, Field Adjustable Wattage Selector, 7 pin receptacle, Bronze Finish	101W	4000K	12930L	Premium, RRRVOR	PhotoCell, Interact City
Roadway LED Cobrahead	RFS 100W40LED 3K G2 R3M UNV DMG FAWS RCD7 GY3	RoadFocus small, Type 3 Medium Distribution, 120 - 277V, Dimming Driver, Field Adjustable Wattage Selector, 7 pin receptacle, Grey Finish	101W	3000K	12294L	Premium, RRRVOR	PhotoCell, Interact City
Roadway LED Cobrahead	RFS 100W40LED 3K G2 R3M UNV DMG FAWS RCD7 BR	RoadFocus small, Type 3 Medium Distribution, 120 - 277V, Dimming Driver, Field Adjustable Wattage Selector, 7 pin receptacle, Bronze Finish	101W	3000K	12294L	Premium, RRRVOR	PhotoCell, Interact City
Roadway LED Cobrahead	RFM 135W40LED 4K G2 R3M UNV DMG FAWS RCD7 GY3	RoadFocus medium, Type 3 Medium Distribution, 120 - 277V, Dimming Driver, Field Adjustable Wattage Selector, 7 pin receptacle, Grey Finish	135W	4000K	16040L	Standard, RRRVOR	PhotoCell, Interact City
Roadway LED Cobrahead	RFM 135W40LED 4K G2 R3M UNV DMG FAWS RCD7 BR	RoadFocus medium, Type 3 Medium Distribution, 120 - 277V, Dimming Driver, Field Adjustable Wattage Selector, 7 pin receptacle, Bronze Finish	135W	4000K	16040L	Standard, RRRVOR	PhotoCell, Interact City
Roadway LED Cobrahead	RFM 135W40LED 3K G2 R3M UNV DMG FAWS RCD7 GY3	RoadFocus medium, Type 3 Medium Distribution, 120 - 277V, Dimming Driver, Field Adjustable Wattage Selector, 7 pin receptacle, Grey Finish	135W	3000K	15251L	Standard, RRRVOR	PhotoCell, Interact City
Roadway LED Cobrahead	RFM 135W40LED 3K G2 R3M UNV DMG FAWS RCD7 BR	RoadFocus medium, Type 3 Medium Distribution, 120 - 277V, Dimming Driver, Field Adjustable Wattage Selector, 7 pin receptacle, Bronze Finish	135W	3000K	15251L	Standard, RRRVOR	PhotoCell, Interact City
Roadway LED Cobrahead	RFM 80W48LED 4K G2 R3M UNV DMG FAWS RCD7 GY3	RoadFocus medium, Type 3 Medium Distribution, 120 - 277V, Dimming Driver, Field Adjustable Wattage Selector, 7 pin receptacle, Grey Finish	81W	4000K	11153L	Premium, RRRVSO	PhotoCell, Interact City
Roadway LED Cobrahead	RFM 80W48LED 4K G2 R3M UNV DMG FAWS RCD7 BR	RoadFocus medium, Type 3 Medium Distribution, 120 - 277V, Dimming Driver, Field Adjustable Wattage Selector, 7 pin receptacle, Bronze Finish	81W	4000K	11153L	Premium, RRRVSO	PhotoCell, Interact City
Roadway LED Cobrahead	RFM 80W48LED 3K G2 R3M UNV DMG FAWS RCD7 GY3	RoadFocus medium, Type 3 Medium Distribution, 120 - 277V, Dimming Driver, Field Adjustable Wattage Selector, 7 pin receptacle, Grey Finish	81W	3000K	10463L	Premium, RRRVSO	PhotoCell, Interact City
Roadway LED Cobrahead	RFM 80W48LED 3K G2 R3M UNV DMG FAWS RCD7 BR	RoadFocus medium, Type 3 Medium Distribution, 120 - 277V, Dimming Driver, Field Adjustable Wattage Selector, 7 pin receptacle, Bronze Finish	81W	3000K	10463L	Premium, RRRVSO	PhotoCell, Interact City
Roadway LED Cobrahead	RFM 160W48LED 4K G2 R3M UNV DMG FAWS RCD7 GY3	RoadFocus medium, Type 3 Medium Distribution, 120 - 277V, Dimming Driver, Field Adjustable Wattage Selector, 7 pin receptacle, Grey Finish	161W	4000K	19489L	Premium, RRRVSO	PhotoCell, Interact City



RoadFocus

Type	Part Number	Description	Watts	Color Temp	Lumens	DLC Code	Controls Capability
Roadway LED Cobrahead	RFM 160W48LED 4K G2 R3M UNV DMG FAWS RCD7 BR	RoadFocus medium, Type 3 Medium Distribution, 120 - 277V, Dimming Driver, Field Adjustable Wattage Selector, 7 pin receptacle, Bronze Finish	161W	4000K	19489L	Premium, RRRVSO	PhotoCell, Interact City
Roadway LED Cobrahead	RFM 160W48LED 3K G2 R3M UNV DMG FAWS RCD7 GY3	RoadFocus medium, Type 3 Medium Distribution, 120 - 277V, Dimming Driver, Field Adjustable Wattage Selector, 7 pin receptacle, Grey Finish	161W	3000K	18283L	Standard, RRRUYP	PhotoCell, Interact City
Roadway LED Cobrahead	RFM 160W48LED 3K G2 R3M UNV DMG FAWS RCD7 BR	RoadFocus medium, Type 3 Medium Distribution, 120 - 277V, Dimming Driver, Field Adjustable Wattage Selector, 7 pin receptacle, Bronze Finish	161W	3000K	18283L	Standard, RRRUYP	PhotoCell, Interact City
Roadway LED Cobrahead	RFM 170W60LED 4K G2 R3M UNV DMG FAWS RCD7 GY3	RoadFocus medium, Type 3 Medium Distribution, 120 - 277V, Dimming Driver, Field Adjustable Wattage Selector, 7 pin receptacle, Grey Finish	170W	4000K	21150L	Premium, RRRVOR	PhotoCell, Interact City
Roadway LED Cobrahead	RFM 170W60LED 4K G2 R3M UNV DMG FAWS RCD7 BR	RoadFocus medium, Type 3 Medium Distribution, 120 - 277V, Dimming Driver, Field Adjustable Wattage Selector, 7 pin receptacle, Bronze Finish	170W	4000K	21150L	Premium, RRRVOR	PhotoCell, Interact City
Roadway LED Cobrahead	RFM 170W60LED 3K G2 R3M UNV DMG FAWS RCD7 GY3	RoadFocus medium, Type 3 Medium Distribution, 120 - 277V, Dimming Driver, Field Adjustable Wattage Selector, 7 pin receptacle, Grey Finish	170W	3000K	20110L	Premium, RRRVOR	PhotoCell, Interact City
Roadway LED Cobrahead	RFM 170W60LED 3K G2 R3M UNV DMG FAWS RCD7 BR	RoadFocus medium, Type 3 Medium Distribution, 120 - 277V, Dimming Driver, Field Adjustable Wattage Selector, 7 pin receptacle, Grey Finish	170W	3000K	20110L	Premium, RRRVOR	PhotoCell, Interact City
Roadway LED Cobrahead	RFL 270W80LED 4K G2 R3M UNV DMG FAWS RCD7 GY3	RoadFocus large, Type 3 Medium Distribution, 120 - 277V, Dimming Driver, Field Adjustable Wattage Selector, 7 pin receptacle, Grey Finish	268W	4000K	32405L	Standard, RRRUYP	PhotoCell, Interact City
Roadway LED Cobrahead	RFL 270W80LED 4K G2 R3M UNV DMG FAWS RCD7 BR	RoadFocus large, Type 3 Medium Distribution, 120 - 277V, Dimming Driver, Field Adjustable Wattage Selector, 7 pin receptacle, Bronze Finish	268W	4000K	32405L	Standard, RRRUYP	PhotoCell, Interact City
Roadway LED Cobrahead	RFL 270W80LED 3K G2 R3M UNV DMG FAWS RCD7 GY3	RoadFocus large, Type 3 Medium Distribution, 120 - 277V, Dimming Driver, Field Adjustable Wattage Selector, 7 pin receptacle, Grey Finish	268W	3000K	30400L	Standard, RRRUYP	PhotoCell, Interact City
Roadway LED Cobrahead	RFL 270W80LED 3K G2 R3M UNV DMG FAWS RCD7 BR	RoadFocus large, Type 3 Medium Distribution, 120 - 277V, Dimming Driver, Field Adjustable Wattage Selector, 7 pin receptacle, Bronze Finish	268W	3000K	30400L	Standard, RRRUYP	PhotoCell, Interact City
Roadway LED Cobrahead	RFL 350W112LED 4K G2 R3M UNV DMG FAWS RCD7 GY3	RoadFocus large, Type 3 Medium Distribution, 120 - 277V, Dimming Driver, Field Adjustable Wattage Selector, 7 pin receptacle, Grey Finish	340W	4000K	42382L	Premium, RRRVSO	PhotoCell, Interact City
Roadway LED Cobrahead	RFL 350W112LED 4K G2 R3M UNV DMG FAWS RCD7 BR	RoadFocus large, Type 3 Medium Distribution, 120 - 277V, Dimming Driver, Field Adjustable Wattage Selector, 7 pin receptacle, Bronze Finish	340W	4000K	42382L	Premium, RRRVSO	PhotoCell, Interact City
Roadway LED Cobrahead	RFL 350W112LED 3K G2 R3M UNV DMG FAWS RCD7 GY3	RoadFocus large, Type 3 Medium Distribution, 120 - 277V, Dimming Driver, Field Adjustable Wattage Selector, 7 pin receptacle, Grey Finish	340W	3000K	39760L	Premium, RRRVSO	PhotoCell, Interact City
Roadway LED Cobrahead	RFL 350W112LED 3K G2 R3M UNV DMG FAWS RCD7 BR	RoadFocus large, Type 3 Medium Distribution, 120 - 277V, Dimming Driver, Field Adjustable Wattage Selector, 7 pin receptacle, Bronze Finish	340W	3000K	39760L	Premium, RRRVSO	PhotoCell, Interact City

Controls Solutions



A city skyline at sunset, with the sun low on the horizon, casting a warm glow over the buildings. The sky is a mix of orange, yellow, and blue. The buildings are silhouetted against the sky, with some lights visible.

Signify Controls Solutions

interact Pro Scalable Sensor

Interact Pro scalable system is a cost-efficient and wireless solution for every step of your customer's smart lighting journey. The system is fully scalable, so it can grow as business requirements grow – from smart to super-smart. The system offers three different flavors providing the customers full flexibility to start simple and scale up as needed by adding a gateway.

Foundation: Simply connect the Interact Ready luminaires, retrofit kits and lamps with the intuitive Interact Pro app, no IT support or gateway needed.

Advanced: Add a gateway anytime to get instant access to cloud-based benefits and functionality such as scheduling, remote access, adaptation and energy monitoring, light point information regarding lifetime and health, as well as regular feature updates.

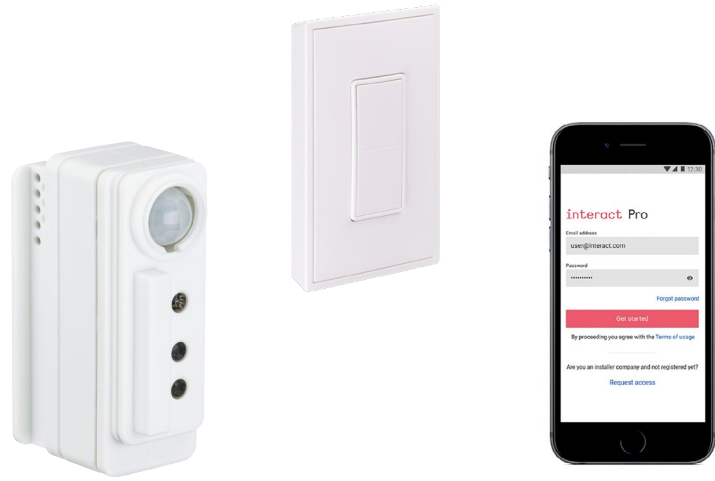
Enterprise: Tap the full potential of the IoT features such as access to occupancy, asset health and environmental sensing data. Optimize workspace quality, improve safety and productivity and boost employee engagement – even across multi-sites.

PHILIPS

Integrate Philips Spacewise into an existing fixture or retrofit kit to benefit from simple app-based programming. This solution eliminates the need for costly additional wiring or commissioning. The granular dimming and dwell time capability allows for gradual transition of light levels that is comfortable to occupants.

Interact Pro Foundation

Smart, simple, scalable



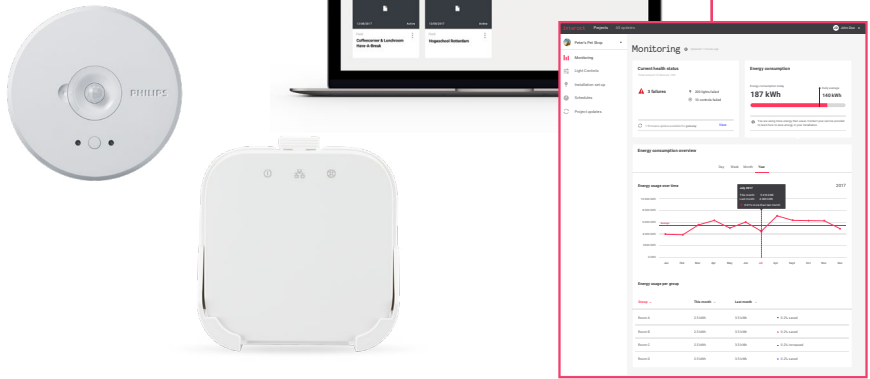
Why choose Interact Pro Foundation?

- It is an evolution of SpaceWise
- Out of the box energy savings of upto 75%
- No gateway, No IT support required
- No light point restrictions
- Meet building codes and qualify for rebates
- Fast and easy commissioning and start up



Interact Pro Foundation

Type	System	Description	Sensor option code to be used for the luminaire	DLC Code	Compatible control components
Controls	Interact Pro Foundation	A wireless no gateway system with adaptive dimming and dwell time feature for deep energy savings. The system can be upgraded to Interact Pro Advanced or Interact Pro Enterprise.	EvoKits: SWZCS Day-Brite troffers: SWZCS Day-Brite highbay: SWZCSH Ledalite: CS Lightolier: SBAZ10-CS (0-10v controller) Lightolier: SBAELV-CS (phase dimming controller)	NFPAJ5M1DVC	<ul style="list-style-type: none"> • Wireless dimmer switch: UID8451/10 • Wireless scene switch: SWS200 • Plug load and 0-10V control module RFSR10 • Infrared commissioning remote IRT9015



Interact Pro Advanced

Smart, simple, scalable



Why choose Interact Pro Advanced?

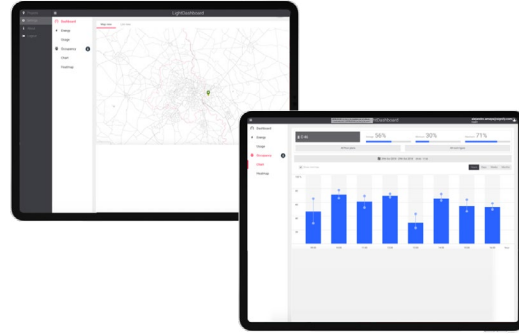
- Get Instant access to cloud-based benefits and functionality such as scheduling, remote access, adaptation and energy monitoring, light point information regarding lifetime and health, as well as regular feature updates.
- Integrate with utilities for Open ADR based demand response strategy
- As your system grows, you can keep and build on all previously installed light points.

Interact Pro Advanced

Type	System	Description	Sensor option code to be used for the luminaire	DLC Code	Compatible control components
Controls	Interact Pro Advanced	Connected lighting and software for energy reporting, scheduling and lighting asset management	EvoKits: SWZCS Day-Brite troffer: SWZCS Day-Brite highbay: SWZCSH Ledalite: CS Lightolier: SBAZ10-CS (0-10v controller) Lightolier: SBAELV-CS (phase dimming controller)	NFPAJ5M1DVC	<ul style="list-style-type: none"> • Wireless dimmer switch: UID8451/10 • Wireless scene switch: SWS200 • Wireless gateway: LCN1840/05 • Plug load and 0-10V control module RFSR10 • Infrared commissioning remote IRT9015

Interact Pro Enterprise

Building intelligence, with light



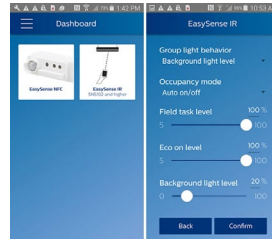
Why choose Interact Pro Enterprise?

- Make the buildings truly smart with IoT enabled sensing capabilities, ideal for large enterprise customers
- Optimize building operation & space utilization by analyzing occupancy data and people counts
- Integrate with BMS via BACnet
- Improve employee engagement with a full suite of IoT Apps allowing for way-finding and integration with your room and desk booking platforms



Interact Pro Enterprise

Type	Part Number	Description	Sensor option code to be used for the luminaire	DLC Code	Compatible control components
Controls	Interact Pro Enterprise	Enterprise level connected lighting and software with floor plan visualization and suite of IoT Apps	EvoKits: SWZCS Day-Brite troffer: SWZCS Day-Brite highbay: SWZCSH Ledalite: CS Lightolier: SBZ10-CS (0-10v controller) Lightolier: SBAELV-CS (phase dimming controller)	NFPAJ5M1DVC	<ul style="list-style-type: none"> • Wireless dimmer switch: UID8451/10 • Wireless scene switch: SWS200 • Wireless gateway: LCN1850/05 • Building connectivity bridge: LCN1860/05 • Plug load and 0-10V control module RFSR10 • Infrared commissioning remote IRT9015



Philips SpaceWise

Save energy, **without compromise**

Embedded sensors and wireless controls, without extra wiring between luminaires or to the compatible wireless switches.



Why choose SpaceWise?

- Philips is committed to the balance between energy efficiency, quality lighting, and the end-user experience. SpaceWise delivers on all three.
- Out of the box solution
- Light where you need it, when you need it
- Wireless grouping
- Deep energy savings

SpaceWise

Type	Part Number	Description	Sensor option code to be used for the luminaire	DLC Code	Compatible control components
Controls	SpaceWise	Philips SpaceWise wireless technology DT, featuring dwell time functionality	SWZDT, SNH200	NKVRE1D2UZZ	<ul style="list-style-type: none"> • Wireless dimmer switch: UID8451/10 • Wireless scene switch: Source from 3rd party Illumra or Magnum brand



© 2021 Signify Holding. All rights reserved. The information provided herein is subject to change, without notice. Signify does not give any representation or warranty as to the accuracy or completeness of the information included herein and shall not be liable for any action in reliance thereon. The information presented in this document is not intended as any commercial offer and does not form part of any quotation or contract, unless otherwise agreed by Signify.

Signify North America Corporation
200 Franklin Square Drive,
Somerset, NJ 08873
Telephone 855-486-2216

Signify Canada Ltd.
281 Hillmount Road,
Markham, ON, Canada L6C 2S3
Telephone 800-668-9008

All trademarks are owned by Signify Holding or their respective owners.