

**A greener  
alternative**  
— 2022  
Collection





# Good design doesn't have to be expensive

Our mission is pure and simple. We aim to bring high quality coffee and tea solutions, as well as household accessories, to everyone. We innovate to create great designs at affordable prices in line with our guiding principle of 'form follows functionality', whilst also taking into consideration our environmental responsibility, sustainability and respect for the wellbeing of our staff, our communities and our planet.

Peter Bodum  
**Founder**

# Collection 2022

2021 was again an unpredictable year for most of us all over the world but also a year that made us realize we need to be ready for fast changes. I am grateful that our BODUM team has been flexible, forward thinking, creative, and ready for new opportunities.

We feel very lucky that only a few of us had suffered with minor health issues and that the company did so well. I am very thankful to our whole team.

BODUM online again had strong growth. Even with coronavirus, our factories have been more productive than ever to create new products for 2022. We will launch new tea and coffee filters made of stainless steel, thin as a paper, with an opening so small that you can hardly see them. These filters will be able to filtrate as clean as paper filters without taking the valuable oil from the coffee and teas. Another good news is that using such a thin steel contributes to less waste.

2022 will be the year we take one step closer to becoming CO2 neutral. By mid year, our plastic production in Aveiro, Portugal, where we have finished the factory expansion, will be running on 80% solar energy, and by 2023 we aim to be 100% neutral with wind and solar energies. We will also start the expansion of our Tondela factory in 2022, which we believe will be 100% neutral running on solar and wind power by the end of 2023.

At the end of 2021, we celebrated important achievements. Our product development and design team excelled last year creating innovative and functional products, while our online shop is now shipping to many countries around the globe: USA, Canada, UK, most of Europe, Singapore, Korea, Japan, Australia and New Zealand.

A big thank you to the whole team for your fantastic commitment.

Jørgen Bodum  
CEO



33	New Colors
41	Coffee
87	Tea
107	Drinkware
125	Tableware
133	Kitchen
145	Outdoor
157	Cork
167	eBODUM



# The early years

The BODUM® story began in 1944 in Copenhagen, Denmark, when Peter Bodum founded the company. The story continues today with his son, Jørgen Bodum, owning the company along with his sister, Pia Bodum, ensuring that the BODUM® Group remains a 100% family-owned business.



The first assembling of Bodum's vacuum coffee maker was carried out on the 5th floor of Bodum's old warehouse in Copenhagen (Nyhavn), Denmark in 1944.

# The early years

In BODUM®'s early years, Peter Bodum was importing glassware to Denmark, when he first became aware of vacuum coffee makers. Impressed by the taste of the coffee, he set out to improve the design and make a product that was affordable for everybody, thus laying the foundations for BODUM®'s success. In the early 1950s, he produced MOCCA, BODUM®'s first vacuum coffee maker, before releasing the SANTOS vacuum coffee maker in 1958.

SANTOS was the product that placed BODUM® firmly on the international stage, where it was acclaimed for its unique design and went on to become one of the most important coffee makers worldwide throughout the 1950s, 1960s, and 1970s.

In 1974, 26-year-old Jørgen Bodum took over the BODUM® company, making an immediate impact with the launch of BODUM®'s first French coffee press, the BISTRO, merging BODUM® traditions with fresh innovation. The internationally acclaimed BISTRO was selected as the most environmentally friendly coffee press by the international media, and received a number of prestigious international and Danish design awards.

A few years later, Jørgen Bodum moved BODUM®'s headquarters to Switzerland, ensuring the company was strategically placed in central Europe.

With great design one of BODUM®'s founding principles, it was a natural progression for Jørgen Bodum to establish an in-house design unit, Pi-Design, in Switzerland. Since 1980, this team of designers, engineers, graphic designers and architects has been responsible for all BODUM® product designs, staying true to the tradition of functionality and quality, with a focus on innovation.

In 1986, Jørgen Bodum turned his attention to the retail market by opening the first BODUM® store in London. This flagship store highlighted the variety of BODUM® products and helped to cement the company's reputation on the international stage. A number of other shops and shop-in-shops followed around the world, including Paris, Copenhagen, Zurich, Lucerne, Tokyo, New York, Sydney, and Auckland.

In 1991, BODUM® purchased Martin S. A., the original producer of the first coffee press maker, MELIOR®.

The MELIOR® coffee press was first produced in the 1950s in the factory of Martin S.A.'s other business, making fine classical clarinets. It went on to become a cult object for drinking coffee in the 1960s, and this design is still present in BODUM®'s current range with the iconic CHAMBORD® coffee press.

However, while the BODUM® name is synonymous with the iconic coffee press, there's much more to us than just coffee.

In 1991, BODUM® also reinvented tea brewing with our innovative ASSAM teapot, developed for the British Tea Council. The ASSAM tea press uses the same brewing system as the French coffee press, giving tea lovers full control over the tea-steeping process for the perfect brew.

The following year, BODUM® also introduced its collection of electrical household goods, e-BODUM®. Simple yet effective, the IBIS water kettle was the first in the collection, which now includes juicers, coffee grinders, mixers, and blenders.

Today, the BODUM® range has expanded further to include other kitchen and household products, including cookware and cutlery, storage items, textiles, and other home and office products.



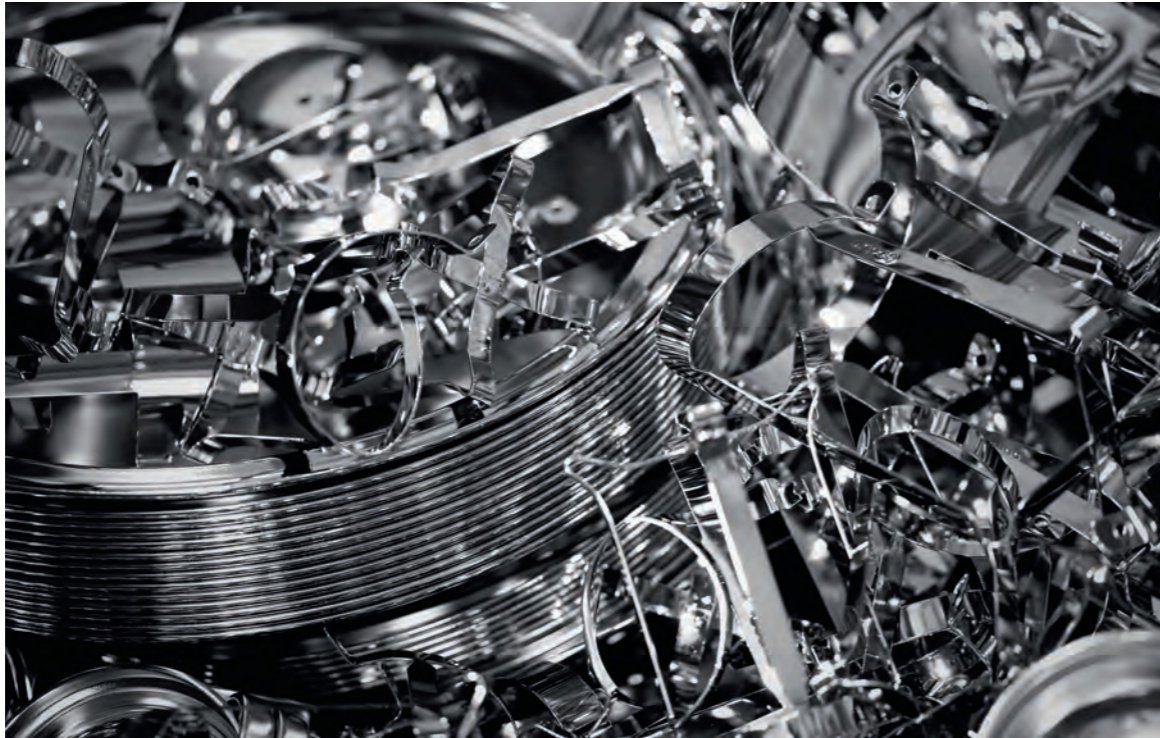


# What is good design?

This question requires that someone does indeed know, and dares to define what good design is and show examples. The problem for the designer and producer would then be how to approach the concept of “good design” with his products.

At BODUM's design studio we are not trying to fulfill this concept of good design, instead we want to give from our perspective of a living and contradictory world, where Mickey Mouse is as important as the collected work of Picasso, where the question what is genuine and false, attractive and ugly, harmonious and discordant, right and wrong, cannot be answered clearly.

In design the simplest things are always the hardest to achieve. A lot of thought goes into finding the best functionality, the best shape, and the best materials. What takes the most thought however, is discovering what can be left out; how we can make our products even simpler and easier – thus enhancing their sophistication.



# Tondela's factory

Since the birth of BODUM Portuguesa, environment has been a driving force and a major concern in our activity. During almost 30 years of production, BODUM Portuguesa assumed a responsible position towards the surrounding environment but also to the internal working conditions and safety and well-being of the team.

BODUM® Portuguesa has set a short-term environmental objective of reducing CO2 emissions. To achieve this goal, we've turned to the most innovative green technologies available - photovoltaic panels and energy storage batteries - with the aim of being entirely self-sufficient in the near future. Production sustainability, environmental responsibility, and concern for the wellbeing, safety and working conditions of our workers are all key to BODUM® Portuguesa's objectives. We are planning to be self sufficient within 2-3 years.



## We strive to continuously improve and develop our production

**By having production processes that are heavily focused in transforming metal and applying surface treatments to metals, a lot of “environment unfriendly” unitary processes are used and required such as stamping or welding, but the most concerning are those connected to the plating line and degreasing processes. These production processes consume natural resources and BODUM works tirelessly to minimize the impacts in:**

- Emission of greenhouse gases;
- Emission of other pollutant air streams;
- Emission of pollutants in water;
- Emission of pollutants in soils;
- Risk of industrial accidents;
- Team safety, health and well-being.

**This was done by adopting the best available techniques (BAT) as preventive at the source of the pollution emission:**

- Training to team in operating, control and contain processes;
- Reducing the number or quantity of hazardous and dangerous materials;
- Equipment and process good-keeping by internal maintenance procedures;
- Optimization of operational conditions and control of processes;
- Reduction of re-processing needs;
- Project and built processes and facilities prevent and contain pollution in its source;
- Good storage of materials to prevent accidents with environmental impact;
- Good storage of materials and production parts to prevent its deterioration;
- Installing containment tanks and isolated floors in risk areas;
- Saving energy in power sources and make the processes energy efficient;.
- Introduction of thermal isolation in the whole building and process tank walls to avoid heat loss;
- Isolation of equipment to avoid the noise propagation.

### **Saving water**

- Recycling water – only 20% of our total consumption is fresh water;
- Consumption control by introducing automatic valves and volume controllers;

- Reducing drag-outs and introduce cascade rinsing between processes;
- Extend the liquid baths life and processes to prevent the treatment need by using filtration, evaporation, ionic exchange techniques;

**Because it is impossible to contain all pollutant in its sources, BODUM Portuguesa has installed end processes to treat, reduce or eliminate the pollution charge in its effluents and wastes. On these, we can highlight:**

### **Waste Water Treatment Plant**

- All liquid effluents are separated according to their characteristics and treated as in batches;
- All pre-treatments and final treatments are permanently monitored until the admissible values of discharge are achieved;
- The discharge of BODUM lines are connected to a municipal waste water treatment plant that complements the final treatment;
- The sludge generated in the water treatment are de-watered by using recycled air of the pressed air equipments.

### **Waste Classification and Separation**

- All wastes generated in the plant are submitted to a proper separation, classification, handling and storage until there are sent to the destination;
- All waste management is outsourced to licensed entities, meaning the proper destination prioritizes the recyclability of the waste. Only two of the wastes generated at BODUM must be eliminated because the recycling limitations in the market.

### **Air Aspiration System**

- The air aspiration system is connected to all the pollution sources avoiding the pollutants spread inside the plant;
- These systems filter the air before its release to the atmosphere;

**In 2008, BODUM Portuguesa had its recognition for all the efforts made and processes developed and implemented during the last decades, by having the Environmental Permit<sup>1</sup> issued by the Portuguese Environment Ministry.**

1. The permit is mandatory and directly comes from the EC Directive 2008/1/EC of January 15 (IPPC). According to this permit, BODUM must have a permanent monitoring of the environmental indicators and values so; it is the guarantee of the legislation fulfilling, good practices and procedures.





# Aveiro's factory

In 2018 we opened a new factory in Aveiro which is one hour drive from our main factory in Tondela - the place where we started our own BODUM production in 1988. In Aveiro we will focus mainly on producing durable plastic products for our outdoor, wine and drinkglasses as well as all our colourful tea and coffee makers.

We believe that the days of single-use plastics are gone. Whether it is to-go cups, one-way plastic or coffee capsules. We are now moving to sustainability. Our factory in Aveiro has been equipped with the newest, fully automatic machines and the most modern tooling technology developed for our production - saving several steps and bringing it down to one cycle.



# Viabile brew

The renowned natural historian Sir David Attenborough recently brought the importance of living more sustainably sharply into focus when his documentary series Blue Planet II was shown in the US, UK and elsewhere.

Viewers were shocked to see plastic rubbish polluting the Earth's waters and endangering the extraordinary creatures that call them home. As the programme pointed out, there may be more plastic in the oceans than fish by 2050, unless people everywhere take steps to reduce environmental damage.

The planet is incredibly precious but increasingly being put under pressure due to plastic pollution and other vast, man-made problems. Attenborough's well-known passion for protecting not only the oceans but every part of the natural world strikes a chord with us at Bodum®. Treating the environment with respect and helping you to develop a more eco-friendly lifestyle is at the heart of everything we do. Make taste, not waste— that's our motto, and it defines our approach to the way we live and work.

Sustainability (that is, looking after the planet's resources, using them wisely and living in harmony with the environment) has surely never been more important than it is now. The scale of today's environmental issues may seem overwhelming. However, any positive changes individuals make to their daily lives can, when considered collectively, make a huge difference.

# No capsules, No paper filters, No waste

When you want to pursue a greener way of life, your starting point could be as simple as adopting a sustainable brewing method when you make a cup of joe. Coffee is the world's favourite drink, with around two billion cups being consumed each day, according to the British Coffee Association. Imagine how much waste would be avoided if every serving was made sustainably, i.e. without single-use items such as coffee capsules or paper filters.





# Greener alternative

What about when you want a fantastic cup of coffee on the go? That's where Bodum® Travel Presses and Travel Mugs come in. They're a reliable, reusable alternative to the takeaway cups available from many coffee shops and cafés.

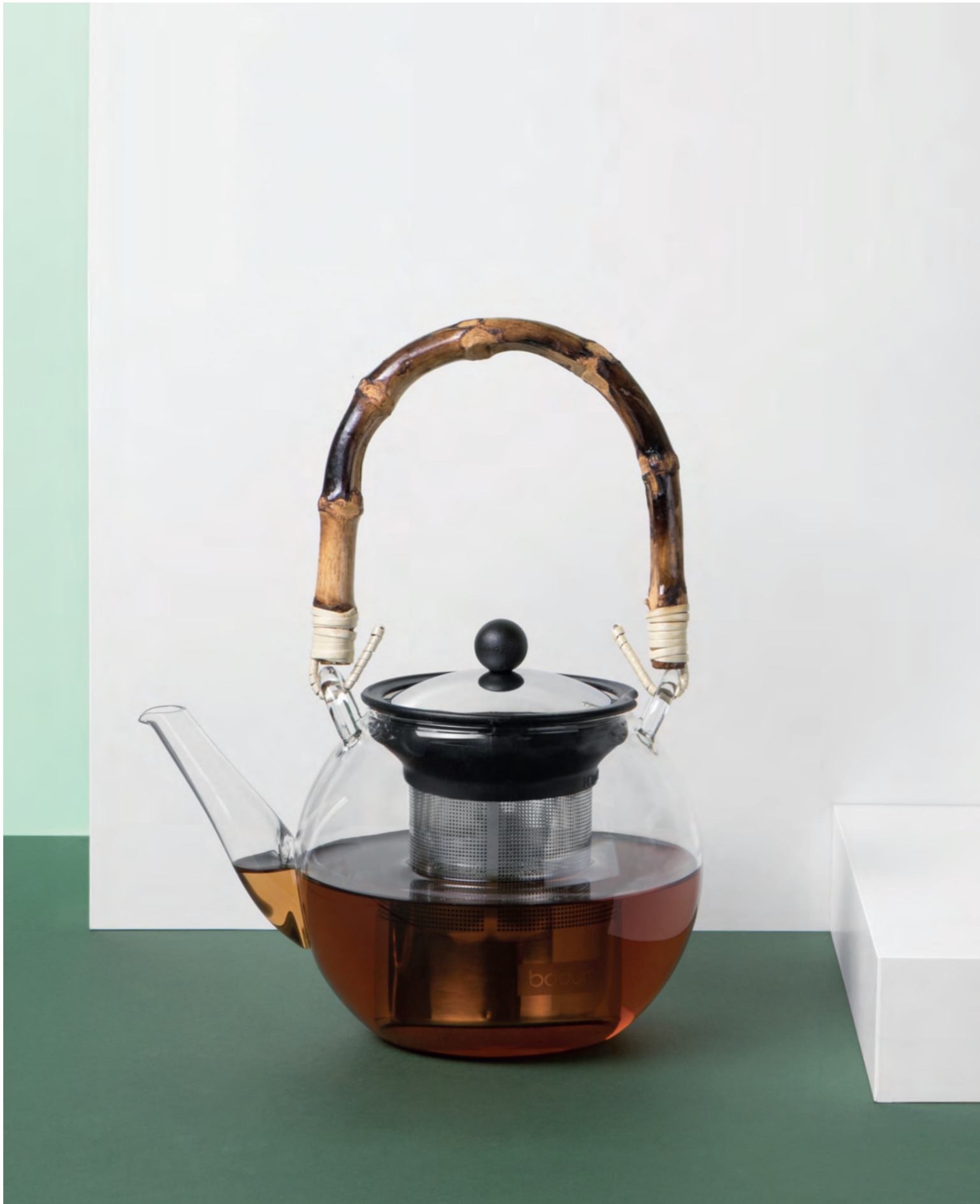
Research-led news resource The Conversation has highlighted the fact that 2.5 billion disposable cups, used for coffee and other drinks, are thrown away annually in the UK alone. Sadly, single-use cups litter urban and rural areas around the world. Even when disposed of properly, they raise environmental concerns. Many paper cups are lined with plastic in an attempt to prevent leaks, and this mixture of materials makes them incredibly difficult to process. As a result, only about 0.1% of disposable drinkware is recycled.

As well as being more sustainable than takeaway cups, our travel presses and mugs make coffee, tea and other beverages more enjoyable. They're designed to keep drinks at the optimum temperature for longer, while their sleeves make them more comfortable to carry. Use a travel press or mug instead of throwaway drinkware and you can say goodbye to other disposable items too, from single-use coffee stirrers to carry trays, further reducing waste.

# Simple sustainable brewing

Thankfully, you don't need single-use capsules or filters to make satisfying coffee. As Jørgen Bodum, our CEO and son of our founder, emphasises: 'Good coffee beans, a glass beaker, a steel filter, and freshly boiled water is all that is needed to brew the world's best cup of coffee, and that is how it has always been.' Any disposable additions are extraneous. Alongside slow coffee, sustainability has always been of central importance to Bodum®. When we launched our first French press, the award-winning Bistro, in the 1970s, it was selected as the most environmentally friendly coffee press by the international media.





# Try a loose leaf tea

If asked what tea bags are made of, most tea drinkers would probably say paper. However, the vast majority also contain single-use plastic, which is intended to seal the bags and stop them falling apart in hot water.

That's unsettling news when you want to live more sustainably. As the green lifestyles blog Moral Fibres laments, the presence of disposable plastic means the tea bags aren't completely biodegradable. Some tea bags are sold in single-use plastic packaging too, compounding the problem. Another issue is that, like paper filters for coffee, tea bags are often chemically bleached.

To enable you to enjoy the purest taste and eliminate non-biodegradable tea bag waste, we've designed beautiful tea presses and pots for any kind of loose leaf tea. The permanent, integrated filters let the leaves swirl freely while preventing them from ending up in your cup. So you'll enjoy sustainably brewed, smooth, hot or iced tea that's bursting with flavour.

# Further boost your green credentials

Our commitment to sustainability doesn't stop there – below are great examples of other ways we can help you to boost your green credentials while enjoying each day more.

Our Bistro Electric Kettle features a measuring guide to help you use exactly the right amount of water and boils with energy-saving efficiency.

The Bodum® Nero Tea and Coffee Coats, as well as our Thermo Jugs and double wall drinkware, keep hot drinks hot for longer without needing extra heat. So you can make the most of each pot you brew and decrease your energy usage.

Our Mocca Vacuum Coffee Maker's distinctive design is enhanced by a handle made of sustainable cork, one of our signature materials. Plus, it'll reduce your electricity consumption, thanks to its gas burner.

Sustainable bamboo is another key material in our collection. The Assam Tea Press' bamboo handle protects your fingers as well as the environment.







# New Colors 2022

After 2021 we all need a splash of color in our lives so let's get inspired by our new collection and hope that 2022 will bring more togetherness and less distance.

- 538 Apple
- 539 Bubblegum
- 540 Midnight
- 451 Dark Roast



CAFFETTIERA  
Coffee Maker

Stainless steel frame with plastic beaker

- 1. 1918-XYBTR 8 cup, 1.0 l, 34 oz
- 2. 1913-XYBTR 3 cup, 0.35 l, 12 oz



JAVA  
Coffee Maker

Plastic frame and beaker

- 1. 1908-XYSSA 8 cup, 1.0 l, 34 oz
- 2. 1903-XYSSA 3 cup, 0.35 l, 12 oz



BEAN  
Cold Brew Coffee Maker

Plastic body with locking-lid and extra-lid

- K11683-10-XY5 12 Cup, 1.5 l, 51 oz



POUR OVER  
Coffee Dripper

Double wall plastic body

- K11872-XYSA 0.30 l, 10 oz





JOYCUP  
Travel Mug  
Double wall, plastic body  
11889-XYS 0.25 l, 8.5 oz



TRAVEL MUG  
Mug  
Double wall, stainless steel body  
11068-XY 0.35 l, 12 oz



TRAVEL MUG  
Mug  
Double wall, plastic body  
11103-XYS 0.35 l, 12 oz





MELIOR®  
Water bottle

Stainless Steel body

- 1. 12057-16B-XY Polished 0.5 l, 17 oz
- 2. 12057-57B-XY Brushed 0.5 l, 17 oz



MELIOR®  
Water bottle

Glass / Tritan body

- 1. 12075-XYB Glass body 0.5 l, 17 oz
- 2. 12053-XYBTR Tritan body 0.5 l, 17 oz





**KVADRANT**  
Durable Glasses

Plastic body

- 1. 4312-680 Beer glass 0.5 l, 17 oz
- 2. 4308-680 Tumbler glass 0.35 l, 12 oz
- 3. 4306-680 Juice glass 0.2 l, 6 oz



**OKTETT**  
Wine & Drinking Glasses

2 pcs set

- 1. 4270-XY Beer Glass 0.35 l, 12 oz
- 2. 4260-XY White Wine Glass 0.14 l, 4.7 oz
- 3. 4266-XY Red Wine Glass 0.22 l, 7.4 oz
- 4. 4275-XY Champagne Flute S 0.13 l, 4.4 oz
- 5. 4276-XY Champagne Flute M 0.17 l, 5.7 oz



**OKTETT**  
Durable Glass Line

Plastic body

- 1. 11930-680 Champagne Coupe 0.28 l, 9 oz
- 2. 11929-680 Margarita 0.25 l, 8 oz
- 3. 11928-680 Martini 0.18 l, 6 oz
- 4. 11927-680 Champagne Flute 0.12 l, 4 oz
- 5. 11925-680 Red Wine 0.25 l, 8 oz
- 6. 11926-680 White Wine 0.23 l, 7.8 oz

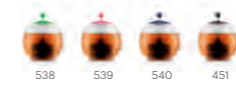




ASSAM  
Tea Press

With glass handle, plastic filter and lid

- 1. 1830-XYB 1.0 l, 34 oz
- 2. 1823-XYB 0.5 l, 17 oz



BISTRO  
Tea egg

Plastic

11569-539



MELIOR®  
Tea Jug

Plastic body

11836-XYSA

1.2 l, 40 oz



JAVA  
Thermo Jug

Plastic body

1. 1602-XY 0.5 l, 17 oz

2. 1603-XY 1.0 l, 34 oz





**BISTRO**  
Bread Box

Sustainable bamboo and BPA-free plastic  
\*Only the plastic box is dishwasher safe

- 1. 11555-XYs Bread box
- 2. 11740-XYs Small bread box



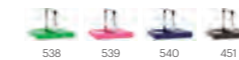
**TOPEE**  
Bowls

Plastic body with Silicone lid, 2 pcs  
K2551-XY-XYs-1 With salad servers  
K2551-XY-XYs



**BISTRO**  
Napkin Holder

Plastic body with metal holder  
11231-XYs





**PAVINA TO GO**  
Double wall tumbler with lid & straw

- Plastic body
- 1. K11849-XYSA-XY-1 0.3 l, 10 oz 2 pcs
  - 2. K11850-XYSA-XY-1 0.4l, 13.5 oz 2 pcs
  - 3. K11894-XYSA-XY-1 0.6 l, 20 oz 2 pcs
  - 4. K12159-XYSA-XY-1 0.7l, 24 oz 2 pcs
  - 5. K12160-XYSA-XY-1 0.95l, 32 oz 2 pcs



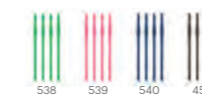
**JOYCUP**  
Granola

- Double wall, plastic body  
11922-XYs 0.25 l, 8.5 oz



**BISTRO**  
Straw

- Silicone straws & cleaning brush  
K12035-XY-Y22



- BISTRO**  
Lunch Box with Cutlery  
Plastic body, with silicone sleeve  
K12017-XYSTR







# Coffee

BODUM was founded in 1944 by Peter Bodum. Launching a new business during the war wasn't easy as jobs were scarce, but my father sensed it was time to venture out on his own. He was incredibly fortunate to be granted an import license, and by the late 1940s he had achieved great success.

The company's first vacuum/siphon coffee maker, MOCCA, was introduced in the early fifties, but it wasn't until 1958 with the production of the SANTOS vacuum/siphon coffee maker that BODUM® became a household name for quality coffee products, and coffee has been the major product group for BODUM ever since.

In the 1970s we introduced the now iconic French Press, which continues to be BODUM's most popular item. Today, the majority of BODUM® coffee makers are produced at our factory in Portugal where producing the highest quality products as well as environmental responsibility and safe working conditions are of the utmost importance.

— Jørgen Bodum

# Coffeehouse Style Drinks



Espresso



An espresso is about 1 to 1.5oz of espresso coffee. It fills about  $\frac{1}{4}$  to  $\frac{2}{4}$  of a demitasse. Espresso is made in an espresso machine by quickly forcing steam and boiling water through finely ground coffee.

Americano



Americano is a style of coffee that is prepared by adding hot water to black coffee which result in a similar strength to traditional drip.

Cappuccino



In Italy cappuccino is served in a 6oz cup. The coffee is topped by a dense froth (half foam, half steamed milk) in a ratio of 3:1. Usually the drink is dusted with unsweetened cocoa.

Macchiato



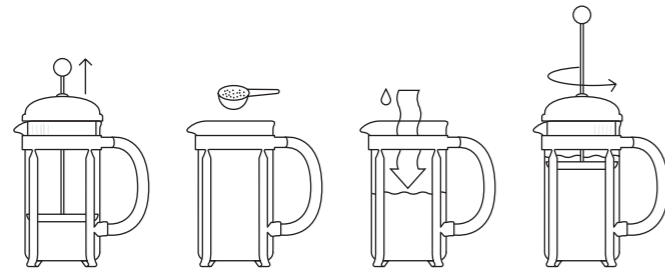
The coffee is slowly poured into an 8oz glass filled with hot, frothed milk. The coffee "stains" the milk and creates a darker layer over the milk. Then it all gets topped off with pure white foam, a three-layer drink.

Caffe Latte



Latte is made with coffee and steamed milk in a ratio of 5:1. The coffee is topped with steamed milk then finished with steamed milk foam.

# French Press



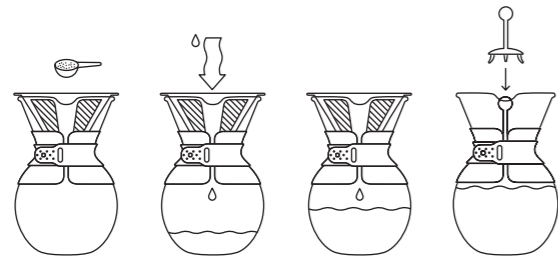
Note: For the French Press brewing method, BODUM recommends a coarse grind.

The right temperature (92–96°C, 195–205°F) brings the optimal extraction power for the essential oils in the beans to develop their full flavor profile in just four minutes. An easy press on the plunger locks the grinds at the bottom of the glass carafe and stops the brewing process.

The French Press Coffee Maker is the simplest of all brewing systems, where coarsely ground beans meet hot water right off the boil.



# Pour Over



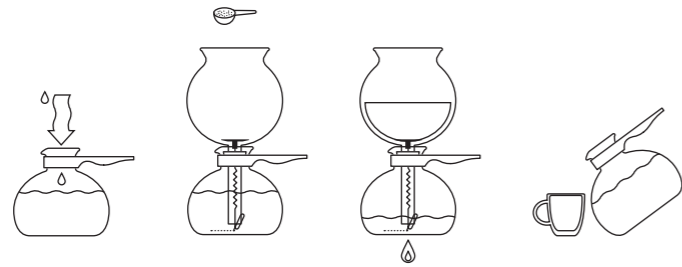
Note: For the pour over brewing method, BODUM recommends a filter coarse grind.

Paper filters actually absorb the coffee's essential oils hence robbing coffee of true flavor, plus no paper filter means no waste!

The pour over brew method features a fine mesh stainless steel filter that eliminates need for paper filters.



# Vacuum



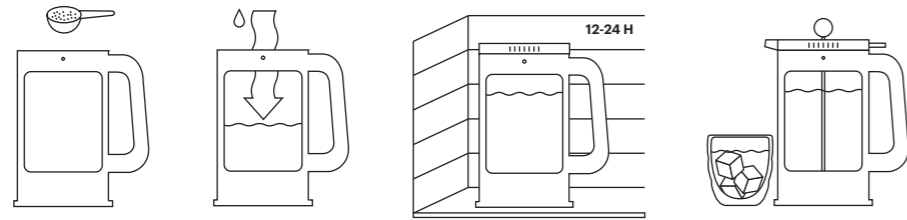
Note: For the PEBO® vacuum/siphon brewing method, BODUM recommends a filter coarse grind.

Water heats in the lower chamber, creating vapor pressure that forces the boiling water up to mix with coffee grounds. The coffee maker is then removed from the heat and vacuum/siphon pressure draws the brewed coffee downward through a strainer, and into the bottom chamber for serving.

The vacuum/siphon brew method has fascinated generations of coffee drinkers with its theatrical technique.



# Cold Brew



Note: For the French Press brewing method, BODUM recommends a coarse grind.

Place the lid on the carafe and let brew for 12 -24 hours at room temperature or in your refrigerator. Press and enjoy!

Quality cold brewed coffee can be made using essentially the same steps. Instead of hot water, add filtered water at room temperature and stir.



# POUR OVER Filters

## How it Works

BODUM has developed a completely new steel filter for use with our tea presses and POUR OVER coffee makers. We've increased the number of holes compared to the old filters but made them much smaller, allowing all the natural oils and nutrients to pass through while keeping the grounds out of your cup. Invented and produced in our Portuguese factory, the POUR OVER filter ensures more taste, less waste, and keeps environmental considerations at the forefront of everything we do.



Materials: Stainless steel, plastic, rubber

Filter mesh process: Metal corrosion

Filter mesh dimension: 0.2 mm

### POUR OVER Filter

Stainless steel, plastic, rubber with black handle  
01-12111-01-1 0.5 l, 17 oz



### POUR OVER Filter

Stainless steel, plastic, rubber with black handle  
01-12110-01-1 1.0 l, 34 oz



### POUR OVER Filter

Stainless steel, plastic, rubber with black handle  
01-12112-01-1 1.5 l, 51 oz



# New Coffee Makers

## French Press

If you want to brew brilliant coffee that's bursting with flavor, look no further than our new French press coffee makers. Part of Bodum's iconic French press brewing range, our new coffee makers combine simplicity of brewing with purity of taste for the perfect cup of joe, every time.



☒ No paper filter! ☒ No capsule!

BPA-Free

Made in Europe

Dishwasher safe

### KENYA

#### Double Wall Coffee Maker

Metal frame with double wall plastic beaker

12051-16-10 8 cup, 1.0 l, 34 oz



### TRIBUTE PRESS

#### Double Wall Coffee Maker

Double Wall Metal Beaker

12076-57 8 cup, 1.0 l, 34 oz



### JAVA

#### Coffee Maker

Plastic frame and beaker

1. 1908-01 8 cup, 1.0 l, 34 oz

2. 1903-01 3 cup, 0.35 l, 12 oz



### YOUNG PRESS

#### Coffee Maker

1. 12061-538-451 8 cup, 1.0 l, 34 oz

2. K12061-540-913 8 cup, 1.0 l, 34 oz





# Chambord®

## Coffee Makers

CHAMBORD® is a true original. The iconic design, now synonymous with the BODUM® name, dates back to the 1950s. To this day we continue to produce the CHAMBORD® with the same artisan craftsmanship of yesteryear, but with a focus on environmentally responsible manufacturing in our BODUM owned factory in Portugal. The French Press system continues to be a greener way to brew coffee with the truest flavor possible.



☒ No paper filter! ☒ No capsule!

Stainless steel frame and plunger

Borosilicate glass / Plastic beaker

BPA-Free

Made in Europe

Dishwasher safe\*

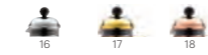
### CHAMBORD®

#### Coffee Maker

Chrome/gold/copper plated stainless steel

\*Only chrome version is dishwasher safe

1. 1932-16 12 cup, 1.5 l, 51 oz
2. 1928-16 8 cup, 1.0 l, 34 oz
3. 1924-16 4 cup, 0.5 l, 17 oz
4. 1923-16 3 cup, 0.35 l, 12 oz



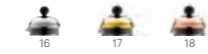
### CHAMBORD®

#### Coffee Maker

Chrome/gold/copper plated stainless steel  
with durable beaker

\*Only chrome version is dishwasher safe

1. 1932-16-10 12 cup, 1.5 l, 51 oz
2. 1928-16-10 8 cup, 1.0 l, 34 oz
3. 1924-16-10 4 cup, 0.5 l, 17 oz
4. 1923-16-10 3 cup, 0.35 l, 12 oz



### CHAMBORD®

#### Coffee Maker

Stainless steel

Soft Grip handle and knob

1. 11735-16 12 cup, 1.5 l, 51 oz
2. 11734-16 8 cup, 1.0 l, 34 oz
3. 11733-16 4 cup, 0.5 l, 17 oz
4. 11732-16 3 cup, 0.35 l, 12 oz



### CHAMBORD®

#### Double Wall Coffee Maker

Stainless steel body with durable beaker

- 11871-16-10 8 cup, 1.0 l, 34 oz





No paper filter! No capsule!  
 Stainless steel frame and plunger  
 Borosilicate glass beaker  
 BPA-Free  
 Made in Europe  
 Dishwasher safe\*

The frame and lid, made of stainless steel, undergo copper plating processes to obtain a durable shiny surface that will last for many years of intense use. The black CHAMBORD® Polypropylene handle comes in a matte finish that not only gives a comfortable grip while serving but adds to the classic quality of the design.

CHAMBORD®  
 Coffee Maker  
 Copper-plated stainless steel  
 \*Only beaker is dishwasher safe  
 11652-18 8 cup, 1.0 l, 34 oz



No paper filter! No capsule!  
 Porcelain Body  
 Plastic hydro dipped handle  
 BPA-Free

Clean lines make this piece eye-catching, with character and uniqueness of first-class craftsmanship, ensures it has a subtle sheen and smooth finish, making it elegant and easy to clean.

DOURO  
 Coffee Maker  
 Porcelain/metal(16) body  
 11910-259 8 cup, 1.0 l, 34 oz



# Columbia

## Coffee Makers

The BODUM® COLUMBIA Coffee Makers are made of double wall stainless steel which means that your coffee stays hot much longer. The air in between the two walls provides a highly effective layer of insulation. The COLUMBIA is not just any nice looking coffee pot: It is a coffee press. After all, you would not want to compromise taste for beauty. And it works just like any of our coffee presses.



☒ No paper filter! ☒ No capsule!

Stainless steel body and plunger

BPA-Free

Dishwasher safe

### BODUM® COLUMBIA Double Wall Coffee Maker

Stainless steel

- |             |                      |
|-------------|----------------------|
| 1. 1312-16  | 12 cup, 1.5 l, 51 oz |
| 2. 1308-16  | 8 cup, 1.0 l, 34 oz  |
| 3. 11055-16 | 4 cup, 0.5 l, 17 oz  |
| 4. 1303-16  | 3 cup, 0.35 l, 12 oz |



### BODUM® COLUMBIA Milk Jug

Stainless steel

10913-16 0.7 l, 24 oz



### BODUM® COLUMBIA Sugar and Creamer Set

Stainless steel

K1305-16





The BRAZIL coffee maker incorporates the BODUM® motto beautifully: good design doesn't have to be expensive. After all, we want to give everybody a chance to brew an excellent cup of coffee in a green way: just add coarse ground coffee, hot water and press.

#### BRAZIL Coffee Maker

Plastic body with stainless steel plunger  
and borosilicate glass beaker

1. 10938-01 8 cup, 1.0 l, 34 oz
2. 10948-01 3 cup, 0.35 l, 12 oz



01

913



1

2



Not only does the CAFFETTIERA coffee maker have a classic design, it also infuses the best aroma from your coffee and leaves hardly any residue behind in your cup! Simply add coarsely ground coffee powder and hot water, wait 4 minutes and then slowly push down the plunger – done.

#### CAFFETTIERA Coffee Maker

Stainless steel frame and plunger with  
borosilicate glass beaker

1. 1918-01 8 cup, 1.0 l, 34 oz
2. 1913-01 3 cup, 0.35 l, 12 oz



01

913



1

2

# Pebo®

## Coffee Makers

The vacuum brewing method has long been known to deliver an abundance of taste through sheer simplicity and pure materials like borosilicate glass. Its exceptionally effective vacuum brewing method extracts all precious oils of your favorite coffee. The vacuum brewing process is entirely sealed off so no aroma can escape. In addition, the brewing time and temperature are perfectly calibrated, ensuring a perfect cup of coffee with each brew.



☒ No paper filter! ☒ No capsule!

Borosilicate glass beaker

BPA-Free

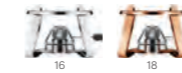
Made in Europe

Dishwasher safe\*

PEBO®  
Vacuum/Siphon Coffee Maker  
1208-01 8 cup, 1.0 l, 34 oz



PEBO®  
Gas Burner with Stand  
K11423-16



PEBO®  
Vacuum/Siphon Coffee Maker  
with Burner and Accessories  
\*Burner and the stand are not dishwasher safe  
K1218-01 8 cup, 1.0 l, 34 oz



# Mocca

## Coffee Makers

The vacuum brewing method has long been known to deliver an abundance of taste through sheer simplicity and pure materials like borosilicate glass. Its exceptionally effective vacuum brewing method extracts all precious oils of your favorite coffee. The vacuum brewing process is entirely sealed off so no aroma can escape. In addition, the brewing time and temperature are perfectly calibrated, ensuring a perfect cup of coffee with each brew.



☒ No paper filter! ☒ No capsule!

Borosilicate glass beaker

BPA-Free

Made in Europe

Dishwasher safe\*

MOCCA  
Vacuum/Siphon Coffee Maker  
with Gas Burner

\*The burner and the stand are

not dishwasher safe

1. K11862-109 8 cup, 1.0 l, 34 oz

2. K11863-109 4 cup, 0.5 l, 17 oz



# Cold Brew

## Coffee Makers

Cold brew coffee makers utilizes the classic French Press brew method to make delicious, flavorful iced coffee. The Cold Brew comes with two lids: one for the fridge overnight, and one with a plunger to press down the coffee grounds in the morning.



☒ No paper filter! ☒ No capsule!

BPA-Free

Made in Europe

Dishwasher safe

BEAN

Cold Brew Coffee Maker

Plastic body with locking-lid and extra-lid

K11683-01 12 Cup, 1.5 l, 51 oz



BEAN

Sustainable Coffee Maker

Plastic body with extra-lid

K12084-401-01 8 cup, 1.0 l, 34 oz



BISTRO NOUVEAU

Coffee Press

Double wall plastic body with extra-lid

K12093-01 8 cup, 1.0 l, 34 oz



# Pour Over

## Coffee Makers

The POUR OVER promises excellent, rich taste and robust aroma while maintaining the natural oils of the ground coffee. For the perfect cup of coffee, simply fill the cone-shaped filter with freshly ground coffee and pour a small amount of heated water over them until soaked. Slowly pour the remaining hot water into the filter. Coffee will drip into the mouth-blown, borosilicate glass carafe and, in 3-4 minutes, will be ready to serve. Remove the filter from the carafe before serving and enjoy!



☒ No paper filter! ☒ No capsule!

- Borosilicate glass carafe
- Stainless steel mesh filter
- BPA-Free
- Made in Europe
- Dishwasher safe\*

### POUR OVER Coffee Maker

\*Cork and leather parts are not dishwasher safe

- 1. 11593-109S 12 cup, 1.5 l, 51 oz
- 2. 11571-109S 8 cup, 1.0 l, 34 oz
- 3. 11592-109S 4 cup, 0.5 l, 17 oz



### POUR OVER Double wall Coffee Maker

\*Cork and leather parts are not dishwasher safe

- 11682-109S 8 cup, 1.0 l, 34 oz





# Coffee Drippers

Championed by coffee lovers for its smooth, full-bodied flavor and robust aroma, pour over coffee was once seen as a product of specialty coffee shops. Thanks to our handsome Coffee Drippers with permanent stainless steel filter, you can now enjoy it at home, too.



☒ No paper filter! ☒ No capsule!

Borosilicate glass beaker

BPA-Free

Made in Europe

MELIOR®

Coffee Dripper

Borosilicate glass with filter holder and filter

- |    |              |             |              |
|----|--------------|-------------|--------------|
| 1. | 11897-10     | Double wall | 1.0 l, 34 oz |
| 2. | 11898-10     | Double wall | 0.6 l, 20 oz |
| 3. | 11762-10-01S | Single wall | 1.0 l, 34 oz |
| 4. | 11767-10-01S | Single wall | 0.6 l, 20 oz |



RIO

Coffee Dripper

Borosilicate glass with filter holder and filter

K12074-01 0.5 l, 17 oz



# Mug Coffee Drippers

Championed by coffee lovers for its smooth, full-bodied flavor and robust aroma, pour over coffee was once seen as a product of specialty coffee shops. Thanks to our handsome Coffee Drippers with permanent stainless steel filter, you can now enjoy it at home, too.



☒ No paper filter! ☒ No capsule!

BPA-Free

Made in Europe

Dishwasher safe

POUR OVER  
Coffee Dripper with Mug  
Double wall, plastic body  
K11872-10SA 0.3l, 10 oz



DOURO SET  
Coffee Dripper with Mug  
Porcelain mug  
K11814-913 0.3l, 10 oz



BLAA SET  
Coffee Dripper with mug  
Porcelain mug  
K12000-83-1 0.3l, 10 oz



# Travel Presses

Enjoy a single-serving of French press coffee or loose leaf tea on the go with the TRAVEL PRESS Coffee Maker. Brew and drink or use in the place of a traditional 3 cup French Press. Add 3-4 tablespoons coarse ground coffee, preferred milk and sweetener, and hot water to the mug. Stir contents, replace lid with plunger up, and go. After 4 minutes press down the plunger and enjoy! The stainless steel double wall design with a vacuum seal maintains heat for hours while remaining cool to the touch.



☒ No paper filter! ☒ No capsule!

Plastic body/Stainless steel body

BPA-Free

Dishwasher safe

## TRAVEL PRESS Coffee Maker

Vacuum, stainless steel body with extra lid

- 1. K11057-01 0.45 l, 15 oz
- 2. K11067-01 0.35 l, 12 oz



## TRAVEL PRESS Coffee Maker

Double wall, plastic body with extra lid

- 1. K11100-01 0.45 l, 15 oz
- 2. K11102-01 0.35 l, 12 oz



## BISTRO 4 Min Timer

The sand will run out at the 4 minute mark.  
11573-01B



# Travel Mugs

Today's on-the-go lifestyle makes us miss out on our comforting daily routines far too often. Well, enjoying our favorite drink wherever we go is no longer on the list. The Travel Mug Collection goes where you go – in just the right size and just the right color and material for all your endeavors.



BPA-Free  
Dishwasher safe

## TRAVEL MUG Mug

Double wall with stainless steel body

1. 11068-01 Snap lid 0.35 l, 12 oz
2. 11093-01 Screw Lid 0.35 l, 12 oz
3. 11868-01 Leak Proof 0.35 l, 12 oz
4. 12151-01 Snap lid 0.6 l, 20 oz



01 913



## TRAVEL MUG Mug

Double wall with plastic body

1. 11685-01 Screw Lid 0.45 l, 15 oz
2. 11684-01 Screw Lid 0.35 l, 12 oz
3. 11103-01 Snap lid 0.35 l, 12 oz



01 913



# Travel Mugs

When you've taken the time to make seriously good coffee, take it with you in the JOYCUP travel mug and savor it wherever the day takes you. This reusable mug is as practical as it is stylish, making it an ideal alternative to disposable cups.



BPA-Free  
Dishwasher safe

JOYCUP  
Travel Mug  
Double Wall Plastic Body  
11889-01 0.25 l, 8 oz



JOYCUP  
Travel Mug  
Single Wall Glass Body  
12091-01 0.4 l, 13.5 oz



# Thermo Jugs

This BISTRO Thermo Jug opens with an easy one-handed press on the lid to let the fluids flow. The lid closes automatically after each use. Ideal for serving or outdoor picnic.



**BISTRO**  
Thermo Jug  
Plastic/Metal body stainless steel inner body



01 913 16 57



**JAVA**  
Thermo Jug  
Plastic body with stainless steel inner body



01 913



# Milk Frothers

Milk frothers turn your daily cup of joe into a coffeehouse specialty with the push of a button. Become the ultimate barista at home by creating airy foam and froth in seconds. Not to mention you can use these handy tools on any light mixing job including salad dressings, protein drinks and cocktails. For best results use ice cold, non-fat or low-fat milk.



LATTEO  
Milk Frother  
Borosilicate glass with plastic plunger  
1446-01 0.25 l, 8 oz



CHAMBORD® CLASSIC  
Milk Frother  
Borosilicate glass with copper/gold-plated stainless steel plunger

\*Only beaker is dishwasher safe

11653-18 0.15 l, 5 oz



SCHIUMA  
Milk Frother  
Battery operated (batteries not included)  
\*Not dishwasher safe  
1. 3043-16  
2. 3040-01



JAVA  
Chocolate Maker  
Plastic beaker and plunger  
12182-01 4 Cups, 0.5 l, 17 oz





# Tea

No wonder tea has been the most popular drink after water for centuries; black teas, white teas, green teas, herbal teas, fruit teas, rooibos teas, the options for pleasure and delight are simply limitless.

We have the right tea maker for all of your tea preferences, including iced tea. Tea brewing doesn't get any purer than with the BODUM® Tea Presses. With this unique system your tea is brewed precisely to your desired strength and aroma. We developed the Tea Press in collaboration with the English Tea Council over 30 years ago and we've been perfecting it ever since. BODUM® Tea Presses are made of the highest quality borosilicate glass, a material that doesn't stain and is absolutely neutral in taste. The glass allows you to observe the brewing process and stop it when it's exactly right. It's just fascinating to see all the beautiful tea colors come to life. The BODUM® Tea Presses are as much a pleasure for your eyes as they are for your taste buds.



# Varieties of tea



## Black Tea

90-96 °C  
195-205 °F  
2-3 min



One of the most known varieties of tea is black tea. It is made from the teaplant *camellia sinensis/assamica* and amongst the most popular in Europe and North America. After harvest, the tea leaves are allowed to oxidize to the fullest, so that the freshly plucked leafs slowly turn brownish and darker. The flavor is usually stronger, than other types of tea, but can also vary from light and floral himalayan first flush to strong and malty assam teas.

## Rooibos Tea

90-96 °C  
195-205 °F  
5-6 min



Only a very limited area in the Cedar mountains, in the heart of South Africa is capable of providing the right soil and climate to grow rooibos. Being used for centuries by the local people, the rooibos cultivation and processign started only a few hundred years ago. Now the bush is treated nearly the same way, as it has been for decades. The bush is allowed to ferment after harvest, giving the tea it's distinctive sweet and red cup.

## Green Tea

70-80 °C  
158-175 °F  
1-2 min



The freshly plucked leafs of the tea plant *camellia sinensis* must be heating directly after harvest, to prevent the leafs from oxidization and becoming black tea. Traditionally heating in iron pans in China, the Japanese have developed a hot water steam heating to prevent the tea from burning. Both methods create a distinct flavour for each region, that can vary from light, floral, sweet to full bodied and slightly toasted.

## White Tea

70-80 °C  
158-175 °F  
4-6 min



Coming from the same plant as green or black tea, white tea is the one with the least human effect during production. Only the youngest and most fragile buds are harvested by hand and left to dry under the sun. No oxidization or heating is done to preserve the full natural character of the white tea. The name derives from the fuzzy white appearance of the young tea leaves.

## Fruit Tea

90-96 °C  
195-205 °F  
5-6 min



Commonly used in Europe, dried fruit pieces and other parts of suitable plants have been brewed with hot water into fruit tea – or tisane – for thousands of years. The basic fruit tea consists of apple, orange, hibiscus and rosehip and is given a special twist with whatever exotic fruits and ingredients is added to it. Fruit teas are naturally caffeine free and make the perfect iced teas for children!

# Teapot

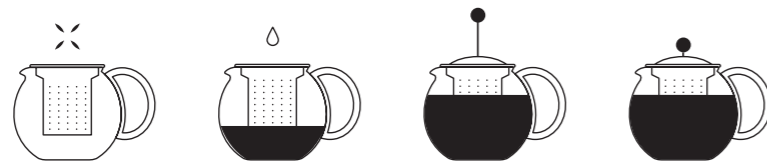


The filter, along with the tea leaves, can be removed at any time to stop the brewing process and can even be used a second time to re-infuse quality loose leaf tea. The highest quality green tea, for example, can be reused up to four times. The CHAMBORD® Teapot comes with a wide filter basket in the borosilicate glass bowl which lets the tea leaves swirl freely and gives them the space they need to live up to their full aroma potential.

Tea leaves can be left to swirl freely in the infuser to develop their full flavor, and can be left to brew without interruption.



# Tea Press



Note: All loose leaf teas are suitable for the BODUM® Tea Press. The Tea Press works best with fruit teas and black tea because it interrupts the brewing process - avoiding bitterness.

Once your preferred coloring and strength is reached, you simply press down the plunger and seal the tea leaves into the bottom part of the filter that has no holes. This makes the brewing process stop with one easy push and you can discard or re-use the tea leaves after you have enjoyed your beverage. Silicone rim secures filter firmly into the teapot and stays cool to the touch for safe removal.

The Tea Press utilizes the same brewing system as the French Press to allow for full control of the tea steeping process.



# Assam Filters

## How it works

BODUM has developed a completely new steel filter for use with our tea presses and POUR OVER coffee makers. We've increased the number of holes compared to the old filters but made them much smaller, allowing all the natural oils and nutrients to pass through while keeping the grounds out of your cup. Invented and produced in our Portuguese factory, the POUR OVER filter ensures more taste, less waste, and keeps environmental considerations at the forefront of everything we do.



Materials: Stainless steel, plastic and rubber

Filter mesh process: Metal corrosion

Filter mesh dimension: 0.2 mm

### ASSAM Filter

Stainless steel with plastic and rubber

01-1867-01-1 0.5 l, 17 oz



### ASSAM Filter

Stainless steel with plastic and rubber

01-1868-01-1 1.0 l, 34 oz



### ASSAM Filter

Stainless steel with plastic and rubber

01-1869-01-1 1.5 l, 51 oz



# Chambord®

## Teapots

The CHAMBORD® Teapot comes with a wide filter basket in the borosilicate glass bowl which lets the tea leaves swirl freely and gives them the space they need to live up to their full aroma potential. Whether you prefer black or green teas – the CHAMBORD® serves them all perfectly; giving them the stage they deserve and displaying their unique coloring beautifully.



☒ No paper filter! ☒ No capsule!

Borosilicate glass pot

BPA-Free

Made in Europe

Dishwasher safe\*

### CHAMBORD®

#### Teapot

With stainless steel filter, lid and frame

1921-16-6 1.3 l, 44 oz



### CHAMBORD®

#### Teapot

Copper/gold-plated stainless steel lid and frame, stainless steel filter

\*Only the filter is dishwasher safe

11656-18 1.3 l, 44 oz

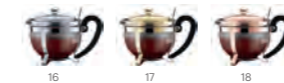


### CHAMBORD®

#### Teapot

With stainless steel filter, lid and frame

12030-16 0.5 l, 17 oz



### CHAMBORD®

#### Warmer

1902-16





No paper filter!  No capsule!  
 Stainless steel pot  
 BPA-Free  
 Dishwasher safe

BODUM® COLUMBIA pairs utility with timeless elegance. Highly polished stainless steel and classic design make this the perfect choice for entertaining and gifting. The French Press brewing system allows for full control over the tea steeping process. The silicone gasket locks the tea leaves into bottom of the filter once brewing is complete, cutting off access of water to the tea leaves. This allows tea to be used multiple times.

BODUM® COLUMBIA  
 Tea Press  
 Stainless steel  
 11496-16 1.5 l, 51 oz



No paper filter!  No capsule!  
 Borosilicate glass pot  
 BPA-Free  
 Made in Europe  
 Dishwasher safe\*

The ASSAM Tea Press with bamboo handle is made from high quality materials in a timeless, classic design without the trendy embellishments that will make a cup of tea a special experience for years to come. The handcrafted spout on the heat resistant borosilicate glass gives it a classic look, and the natural bamboo handle makes it the most unique and practical tea maker ever.

ASSAM  
 Tea Press with Bamboo Handle

Stainless steel filter and lid  
 \*Only the filter and glass are dishwasher safe  
 1. 11797-139 1.5 l, 51 oz  
 2. 11806-139 1.0 l, 34 oz



# Assam

## Tea Presses

The ASSAM Tea Press is the icon among the wide variety of BODUM® Tea Presses. Its classic round shape and borosilicate glass let all teas shine in their best light. Contrary to non-transparent pots, the glass pot allows the distinct color palates to be viewed as they are a big part of any tea lover's delight. There is also a very practical reason for making glass the preferred staging ground for your teas: You have precise control over the extraction and strength of the tea as the color's intensity indicates how far along in the brewing process.



☒ No paper filter! ☒ No capsule!

Borosilicate glass pot

BPA-Free

Made in Europe

Dishwasher safe

### ASSAM

#### Tea Press

With glass handle, stainless steel filter and lid

1. 1802-16 1.5 l, 51 oz

2. 1801-16 1.0 l, 34 oz

3. 1807-16 0.5 l, 17 oz



### ASSAM

#### Tea Press

With glass handle, plastic filter and lid

1. 1830-01 1.0 l, 34 oz

2. 1823-01 0.5 l, 17 oz



### BISTRO

#### Warmer

10447-16 ø 13.5 cm, ø 5.3 in



### TROLLEY

#### Tea cart

12140-01





No paper filter! No capsule!  
Porcelain pot

Clean lines make this piece eye-catching, with character and uniqueness of first-class craftsmanship, ensures it has a subtle sheen and smooth finish, making it elegant and easy to clean.



DOURO  
Tea Press

Porcelain body

\*Not dishwasher safe

- 1. 11920-259 1.5 l, 51 oz
- 2. 12037-259 0.5 l, 17 oz



1

2



No paper filter! No capsule!  
Borosilicate glass  
Made in Europe  
Dishwasher safe

Its plastic spout makes for precise pouring and a little rubber ball in the lid closes the Carafe when it's standing upright. When it's tilted the little ball moves up and opens the carafe for easy pouring. The opening is blocked by a grid to keep ice cubes or herbs from falling into the glass.



BISTRO  
Water Carafe

11187-10-2 1.0 l, 34 oz





# Infuser

Ice Tea Jugs are great for all occasions, during hot summers as well as cold winters! With the popularity of flavored water, spare the expense and added sugars by making your own natural cold-brew iced tea, flavored-infused water, and even sangria, at home. All parts are dishwasher safe and can be put in the fridge.



☒ No paper filter! ☒ No capsule!

BPA-Free

Made in Europe

Dishwasher safe

## CEYLON

### Infusion Jug

With plastic filter.

1. 10619-10 3.0 l, 101 oz

2. 1470-10 1.5 l, 51 oz



## CEYLON

### Infusion Jug

With metal infuser.

1. 10619-10-4 3.0 l, 101 oz

2. 1470-10-4 1.5 l, 51 oz



## BIASCA

### Infusion Jug

Borosilicate glass with mesh filter.

11575-10 1.2 l, 40 oz



## MELIOR®

### Tea Jug

Plastic body

11836-10 1.2 l, 40 oz





# Drinkware

BODUM premiered its line of double wall glasses in 2004. The inventive design coupled with timeliness style made these glasses an instant classic. Over the past years the collection has earned numerous awards and expanded to include a variety of styles and sizes.

Made of heat-resistant borosilicate glass and individually mouth-blown by expert artisans, the double wall construction creates a highly effective layer of insulation. Hot drinks stay hot longer while the glass remains cool to the touch, and cold drinks stay cold without producing messy condensation. The result is endless serving possibilities. The patent pending hydrophobic silicone vent at the bottom of each glass equalizes pressure within the walls of the glass with the outside air pressure. The glass will self-adjust to any temperature liquid, and the vent is only permeable to air, not water, so whether your beverage is hot or cold it will never allow fluids into the interior of the glass layers.

The BODUM® Double Wall Glasses have won the following awards:



# Double Wall Glasses that breathe!

A silicone vent at the base of each of BODUM®'s Double Wall Glasses equalizes the air pressure between the two layers of glass when either hot or cold liquids are added. Permeable only to air, never water, the vent enhances durability and will never allow liquids to enter between the two layers.

Every double wall glass is mouth-blown by expert artisans, and therefore each may have slight differences in height, thickness, and weight. To preserve the longevity of the glass, please adhere to the following precautions:



Microwave Safe  
Up to 350 °F/180 °C.



Oven Safe  
Up to 350 °F/180 °C.



Dishwasher safe  
Top rack only






  
 product design award  
 2005

PAVINA®  
Double Wall Glass

2 pcs set

- 1. 4560-10 0.45 l, 15 oz
- 2. 4559-10 0.35 l, 12 oz
- 3. 4558-10 0.25 l, 8 oz
- 4. 4557-10 0.08 l, 2.5 oz




  
 product design award  
 2005

PILATUS  
Double Wall Glass

2 pcs set

- 1. 10485-10 0.35l, 12 oz
- 2. 10484-10 0.25l, 8 oz
- 3. 11477-10 0.08l, 2.5 oz





BODUM® CANTEEN  
Double Wall Glass

2 pcs set

- 1. 10110-10 0.4l, 13.5 oz
- 2. 10109-10 0.2l, 6 oz
- 3. 10108-10 0.1l, 3 oz



BODUM® CANTEEN  
Double Wall Mug

2 pcs set

- 1. 10326-10 0.4l, 13.5 oz
- 2. 10325-10 0.2l, 6 oz





ASSAM  
Double Wall Glass  
2 pcs set  
1. 4547-10 0.4 l, 13.5 oz  
2. 4556-10 0.25 l, 8 oz  
3. 4555-10 0.2 l, 6 oz  
4. 4554-10 0.1 l, 3 oz



BISTRO  
Double Wall Mug  
2 pcs set  
1. 10606-10 0.45l, 15 oz  
2. 10608-10 0.45l, 15 oz  
3. 10604-10 0.3l, 10 oz  
4. 10602-10 0.15l, 5 oz  
5. 10605-10 0.48l, 16.2 oz  
6. 10607-10 0.45l, 15 oz





RIGI  
Double Wall Glasses  
2 pcs set  
1. M10478-10 0.25 l, 8 oz  
2. M10479-10 0.35 l, 12 oz  
3. M10480-10 0.45 l, 15 oz



TITLIS  
Double Wall Glass  
2 pcs set  
1. 10483-10 0.45l, 15 oz  
2. 10482-10 0.35l, 12 oz  
3. 10481-10 0.25l, 8 oz





CHAMBORD  
Tea Glass

2 pcs set

4942-294-852

0.3 l / 10.1 oz



294-852

367-695



OKTETT  
Wine & Drinking Glasses

2 pcs set

- |    |           |           |                 |
|----|-----------|-----------|-----------------|
| 1. | 10211-591 | Beer      | 0.37 l, 12.5 oz |
| 2. | 10212-589 | Juice     | 0.21 l, 7.1 oz  |
| 3. | 12141-386 | Red Wine  | 0.35 l, 11.8 oz |
| 4. | 12143-340 | Champagne | 0.3 l, 10.1 oz  |
| 5. | 12144-590 | Martini   | 0.2 l, 6.7 oz   |







MELIOR  
Double Wall Glass  
2 pcs set  
12082-10 0.1 l, 3 oz



SKÅL

Double Wall Glass

2 pcs set

- |     |          |             |                 |
|-----|----------|-------------|-----------------|
| 1.  | 12166-10 | Spirits     | 0.14 l, 4.7 oz  |
| 2.  | 12167-10 | Chardonnay  | 0.25 l, 8.4 oz  |
| 3.  | 12168-10 | Riesling    | 0.3 l, 10 oz    |
| 4.  | 12169-10 | Pinot       | 0.5 l, 16.9 oz  |
| 5.  | 12170-10 | Syrah       | 0.45 l, 15.2 oz |
| 6.  | 12171-10 | Merlot      | 0.5 l, 16.9 oz  |
| 7.  | 12172-10 | Champagne   | 0.2 l, 6.7 oz   |
| 8.  | 12173-10 | Shiraz      | 0.5 l, 16.9 oz  |
| 9.  | 12181-10 | Whiskey     | 0.28 l, 9.5 oz  |
| 10. | 12184-10 | Gin & tonic | 0.29 l, 9.8 oz  |



DOURO BAR

Double Wall Glass

2 pcs set

- |     |          |             |                 |
|-----|----------|-------------|-----------------|
| 1.  | 12186-10 | Spirits     | 0.14 l, 4.7 oz  |
| 2.  | 12187-10 | Chardonnay  | 0.25 l, 8.4 oz  |
| 3.  | 12188-10 | Riesling    | 0.3 l, 10 oz    |
| 4.  | 12189-10 | Pinot       | 0.5 l, 16.9 oz  |
| 5.  | 12190-10 | Syrah       | 0.45 l, 15.2 oz |
| 6.  | 12191-10 | Merlot      | 0.5 l, 16.9 oz  |
| 7.  | 12192-10 | Champagne   | 0.2 l, 6.7 oz   |
| 8.  | 12193-10 | Shiraz      | 0.5 l, 16.9 oz  |
| 9.  | 12183-10 | Whiskey     | 0.28 l, 9.5 oz  |
| 10. | 12194-10 | Gin & Tonic | 0.29 l, 9.8 oz  |





DOURO  
Double Wall Glass

2 pcs set

- 1. 12136-10 0.25 l, 8 oz
- 2. 12137-10 0.35 l, 12 oz
- 3. 12134-10 0.45 l, 15 oz
- 4. 12138-10 0.65 l, 23 oz



DOURO  
Double Wall Sake Glass

2 pcs set (Glasses Only)

- 1. 12129-10 Sake Glass 0.06 l, 2 oz
- 2. 12130-10 Tokkuri Carafe 0.36 l, 12 oz
- 3. 12131-10 Tokkuri Carafe 0.36 l, 12 oz
- 4. 12132-10 Tokkuri Carafe 0.36 l, 12 oz





# Tableware

Discover the broad selection of elegantly designed porcelain and complete your home's repertoire of sophisticated dinnerware. You'll find single pieces that are easy to mix and match as well as complete porcelain dining sets that will give your table a new look.

Each piece's smooth, elegant form and considered functionality can be simply appreciated. Stage your breakfast with an opulently decorated breakfast table or enjoy a delicious gazpacho from our well-proportioned soup plates or arrange a wonderful meal on the individual pasta or gourmet plates. A clean, white plate can become a canvas for either inspired culinary artistry or perfectly ordinary weekday meals. After all, there is beauty in the mundane. And imagine picking up the same plate years later and seeing, reflected in the smooth, white surface all the good meals and good times enjoyed. No limits are set to the imagination when it comes to this large range of choice and our series combinability.

# Douro

## Porcelain

The Douro Valley in Portugal is one of Europe's oldest and most beautiful wine regions. With the curved terraces of vines as far as the eye reaches, it has been the inspiration for the fine grooves in BODUM's new porcelain set DOURO. An elegant classic design that both black and white can stand alone. But which, in all its simplicity, can be mixed with other porcelain sets, make a soft contrast to glass and steel, or emphasize warm materials like cork and wood.



Porcelain  
 Versatile and stackable  
 Microwave safe  
 Dishwasher safe

### DOURO Mugs, Bowls and Plates

- Porcelain
- 1. 11814-03 Coffee Mug 0,35 l, 12 oz
  - 2. 12059-03 Double Wall 0,1l, 3.4 oz
  - 3. 11839-03 Pasta plate ø28 cm, 11 in
  - 4. 11818-03 Dinner plate ø28 cm, 11 in
  - 5. 11817-03 Lunch plate ø23 cm, 9 in
  - 6. 11816-03 Dessert plate ø18 cm, 7 in
  - 7. 11815-03 Bowl 0,48 l, 16.2 oz
  - 8. 12127-03 Mug 0,32 l, 10.8 oz
  - 9. 12128-03 Mug 0,19 l, 6.4 oz



# Blå

## Porcelain

It is simple. A tiny blue decoration. But one that parted the waters, democratized the good life, and painted a new picture of women in particular. It was made in a creative process that pushed the boundaries of conventional design and gave birth to a new, radical, minimal expression in one poetic stroke. It is the dinnerware Blå. Designed by Grethe Meyer in 1965.



Porcelain

Versatile and stackable

Microwave safe

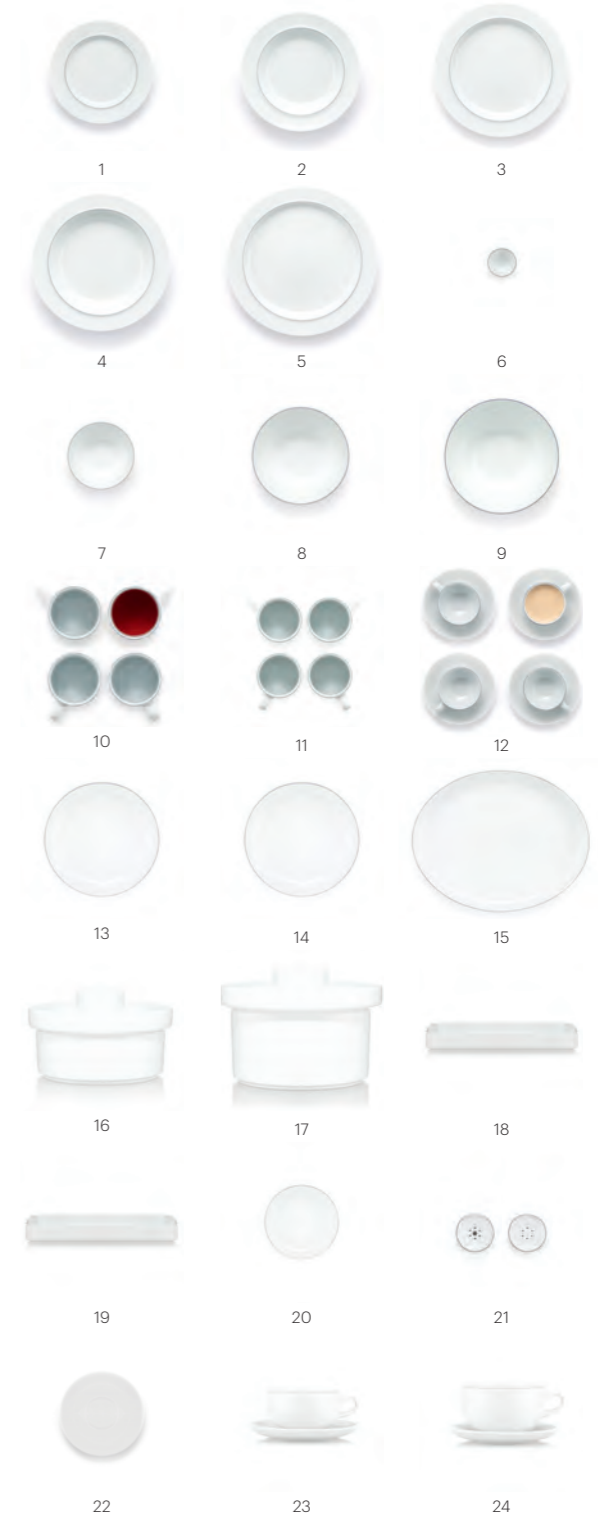
Dishwasher safe

## BLÅ

### Mugs, Bowls and Plates

Porcelain

- |     |           |                |                 |
|-----|-----------|----------------|-----------------|
| 1.  | 11950-83  | Plate          | ø18 cm          |
| 2.  | 11951-83  | Deep Plate     | ø21 cm          |
| 3.  | 11952-83  | Plate          | ø23,5 cm        |
| 4.  | 12001-83  | Deep Plate     | ø24cm           |
| 5.  | 11954-83  | Plate          | ø26,5 cm        |
| 6.  | 11965-83  | Egg Cup        | ø4.5 cm         |
| 7.  | 11973-83  | Sauce Bowl     | ø11cm           |
| 8.  | 11975-83  | Bowl           | ø14 cm          |
| 9.  | 11977-83  | Bowl           | ø 21.5 × 11.5cm |
| 10. | 12000-83  | Mug            | 0.35 l, 12 oz   |
| 11. | 12003-83  | Mug            | 0.2l, 7 oz.     |
| 12. | 11959-83  | Espresso Set   | 0.09 l, 3 oz    |
| 13. | 11989-83  | Serving Plate  | ø 21 × h 6,5 cm |
| 14. | 11990-83  | Serving Plate  | ø 26.5 × 5.5 cm |
| 15. | 11991-83  | Oval plate     | 33 × 26 × 5 cm  |
| 16. | 11993-83  | Casserole      | 20.5 cm         |
| 17. | 11994-83  | Casserole      | 23 cm           |
| 18. | 11996-83  | Rectangle tray | 24 × 15         |
| 19. | 11997-83  | Square Tray    | 24 × 24 × 3 cm  |
| 20. | 12009-83  | Round Bowl     | ø 14 × 4 cm     |
| 21. | K11992-83 | Salt & Pepper  | 5 cm            |
| 22. | 11964-83  |                | ø 15cm          |
| 23. | 11961-83  | Cup            | ø10cm, 0.25l    |
| 24. | 12005-83  | Cup            | ø11.4cm, 0.35l  |





# Kitchen

Our kitchens have become the central hub of our living quarters – almost like the farm kitchens in Denmark used to be.

They're the place where everything happens, where everybody meets, where discussions are held and beans are spilled. The kitchen is no longer a cordoned off place that feeds what's going on in the living room. Today's kitchen is the living room, it's where everybody ends up anyway. And that's a good thing – we want them to see the whole range of beautiful BODUM® products at work after all.

# Storage

In the kitchen there are a lot of small and big things that need to be sorted and stored. The easiest and most efficient way to manage that is with storage jars, designed to help you organize or even preserve your favorite food items with ease. Our practical storage jar collection is sure to complement any home environment in style and it offers color and harmony to brighten your day. They have plastic or cork lids which are airtight so your food should last longer. With our clean and simple look you can mix and match the different sizes, or together with other jars from Bodum create your personal touch on the kitchen shelf.



BPA-Free  
 Made in Europe  
 Dishwasher safe\*

## YOHKI Storage Jar

Borosilicate glass with cork lid  
 \*Only glass is dishwasher safe

- 1. 8687-109-2 1.9 l, 64 oz
- 2. 8700-109-2 2.5 l, 85 oz
- 3. 8650-109-2 2.0 l, 68 oz
- 4. 8600-109-2 1.0 l, 34 oz
- 5. 8560-109-2 0.6 l, 20 oz
- 6. 8525-109-2 0.25 l, 8 oz



## PRESSO Storage Jar

Durable jar with silicone sleeve

- 1. 11832-01 1.9 l, 64 oz
- 2. 11831-01 2.5 l, 85 oz
- 3. 11830-01 2.0 l, 68 oz
- 4. 11829-01 1.0 l, 34 oz
- 5. 11828-01 0.6 l, 20 oz
- 6. 11827-01 0.25 l, 8 oz



## CHAMBORD® CLASSIC Storage Jar

Gold/copper-plated stainless steel

\*Only beaker is dishwasher safe

- 1. 11784-18 1.8 l, 60 oz
- 2. 11714-18 2.0 l, 68 oz
- 3. 11654-18 1.0 l, 34 oz
- 4. 11713-18 0.6 l, 20 oz





HOT POT  
Bowl

Borosilicate glass with cork base and silicone lid

\*Only glass is dishwasher safe

- 1. 4403-10-143 2.5 l, 85 oz
- 2. 4402-10-143 1.0 l, 34 oz
- 3. 4401-10-143 0.25 l, 8 oz
- K4403-143 3 pcs set



HOT POT  
Bowl

Borosilicate glass with silicone lid

- 1. 10125-01 0.25 l, 8 oz, 2 pcs set
- 2. 10126-01 1.0 l, 34 oz
- 3. K10127-01 1.0 l, 34 oz + 2.5 l, 85 oz, 2 pcs set
- 4. 10127-01 2.5 l, 85 oz





# Grinders

There are some things we just want less of, so let's free up your kitchen counter, your spice cabinet, your table, or your hands for that matter. There is really no reason you should need a salt grinder and a pepper grinder to spice up your cooking when you can have it all in one!



Ceramic grinder  
Gradually adjustable  
Easily refillable

## BISTRO

### Salt and Pepper Grinder

This salt and pepper grinder is easily refillable, and it's made from structured plastic, which gives it a non-slippery finish.

11368-01-3



## TWIN

### Salt and Pepper Grinder

With one easy turn of the silicone band that serves as a non-slip handle, the TWIN switches between salt and pepper.

11002-01

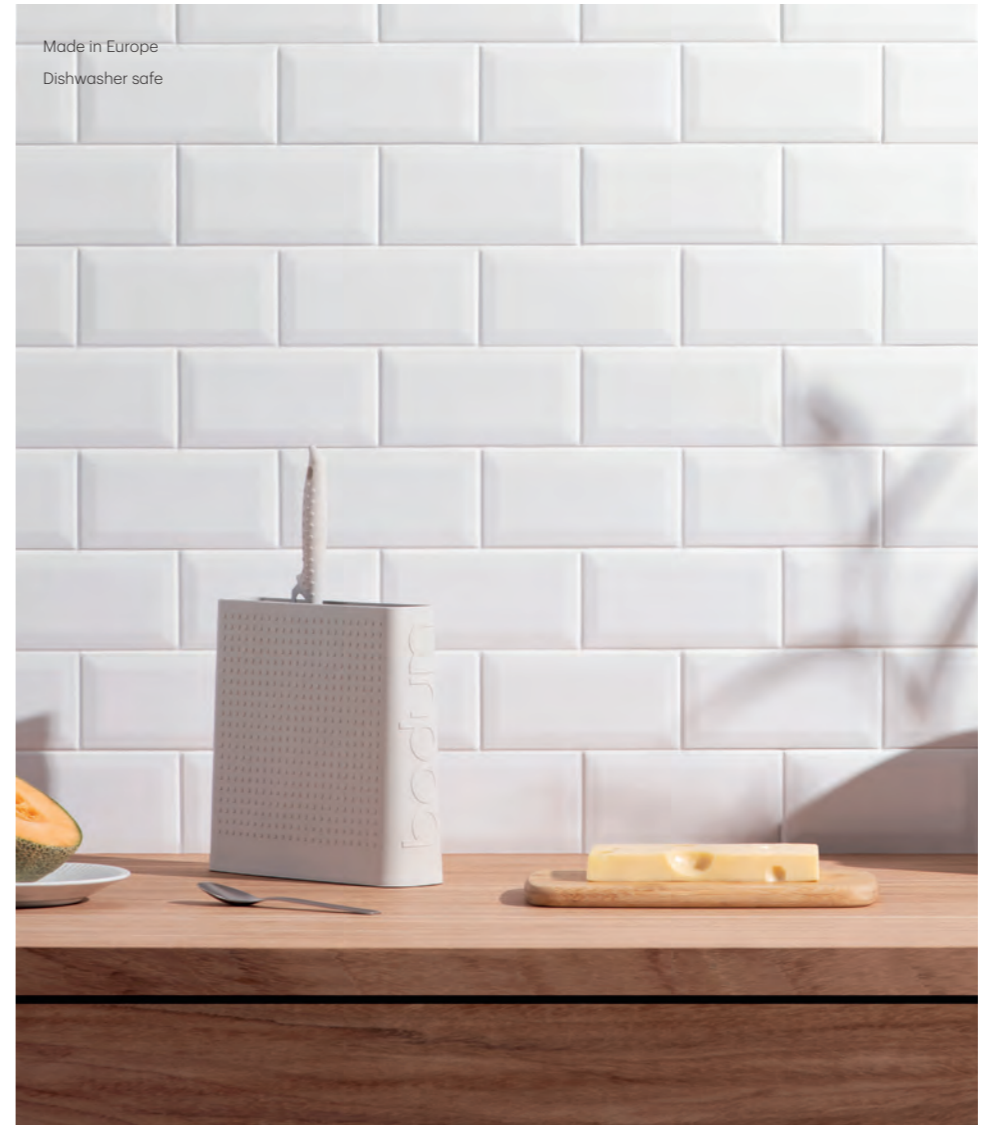


Made in Europe  
Dishwasher safe



PULLERT  
Towel Holder  
2330-01

Made in Europe  
Dishwasher safe



BISTRO  
Knife Block

The inside is removable and dishwasher safe  
Made of a myriad of very fine plastic sticks  
allowing any knife to sit anywhere in the  
block - tight and secure.

11089-01



01

913

# Bread Box

Fresh bread is one of life's simple pleasures, but without proper storage your delicious loaf will soon become stale. Keep bread fresh and tasty for longer in the BISTRO bread box. This large bread box offers handsome countertop storage. Constructed from colorful BPA-free plastic, it features a bamboo lid that doubles up as a cutting board and serving tray for your loaf, complete with crumb-catching grooves. Both a practical storage solution and a stylish, multi-purpose accessory, this bamboo bread box will hold an oversized loaf or a combination of smaller loaves, rolls and pastries, making it the perfect kitchen companion.



BPA-Free  
 Made in Europe  
 Dishwasher safe\*

## BISTRO Bread Box

Sustainable bamboo and BPA-free plastic

\*Only the plastic box is dishwasher safe

- 1. 11740-01 Small bread box
- 2. 11555-01 Bread box





# Outdoor

BODUM® has an array of BPA-free plastic products that are perfect for outdoor and poolside service. Introducing our new collection of outdoor tumblers made from an extremely durable plastic.

The way further:

- All product produced by BODUM Plásticos can be recycled and many of them are in fact made from recycled materials.
- Our Travel Mugs, Double Wall Glasses and Cold Brew come out of the mould as one piece saving resources and energy.
- Producing durable products rather than single-use options is the way forward, and we'll continue doing everything we can to pursue a more environmentally friendly lifestyle.

# Pavina® Outdoor

## Tumblers

PAVINA® OUTDOOR is a crystal clear lightweight double wall tumbler designed for the outdoors. Ideal for everyday use and functional for large outdoor barbeques. We have recently invented a new technique for the production of our double wall tumblers by using durable plastic. The tumblers are produced in one whole piece - no welding and no possibility of leaking – and even better than that, it is all done in a sustainable way.



BPA-Free  
 Made in Europe  
 Dishwasher safe

- PAVINA®**  
 Double wall tumblers  
 Plastic body
- 1. 11894-10 0.6 l, 20 oz
  - 2. 11850-10 0.45 l, 15 oz
  - 3. 11849-10 0.35 l, 12 oz
  - 4. 11848-10 0.25 l, 8 oz



- PAVINA TO GO**  
 Double wall tumbler with lid  
 Plastic body
- 1. K11850-10SA 0.4l, 13.5oz
  - 2. K11849-10SA 0.3l, 10 oz
  - 3. K11848-10SA 0.2 l, 6 oz



- PAVINA TO GO**  
 Double wall tumbler with lid & straw  
 Plastic body
- 1. K12160-01SA-01-1 0.95l, 32 oz
  - 2. K12159-01SA-01-1 0.7l, 24 oz
  - 3. K11894-01SA-01-1 0.6 l, 20 oz
  - 4. K11850-01SA-01-1 0.4l, 13.5 oz
  - 5. K11849-01SA-01-1 0.3l, 10 oz



- BISTRO**  
 Pocket and Brush for silicone Straw  
 Silicone  
 12163-450



# JOYCUP

## Granola

Always on the go? Just take a break for a fresh snack with the new addition to our BODUM Joycup range. The BODUM Joycup Granola model is ideal for taking your cereals, fruit, muesli, milk or yoghurt, according to your preferences, to the office or to school, while traveling or just simply when you are enjoying a nice afternoon at the park.



BPA-Free  
Made in Europe  
Dishwasher safe

JOYCUP  
Granola  
Plastic body  
11922-01 0.25 l, 10 oz



# Mug Tree

Whether your morning beverage of choice is black coffee, cappuccino, or an aromatic tea, your favorite mugs should never be hard to find. With a space saving design to keep your mugs on display and easily accessible, this functional tree will immediately add a modern touch to your kitchen counter.



BPA-Free  
Made in Europe  
Dishwasher safe

BISTRO  
Mug Tree  
Plastic body  
Set with durable double wall mugs  
K2110-01-10 6 x 0.3 l, 10 oz



BISTRO  
Double Wall Mug  
Plastic body  
11872-10SA 0.3 l, 10 oz



BISTRO  
Foldable Cup  
K12060-01 0.3 l, 10 oz



# Oktett

## Durable Glass

There is nothing quite like festive drinking glasses to add the finishing touch to a party occasion. This eclectic range of beverage ware combines contemporary style with traditional principles. Each individual glass features a carefully considered shape which is formulated specifically for the subtleties of different drinks, making them ideal for tastings.



BPA-Free  
Made in Europe  
Dishwasher safe



### OKTETT Durable Glass Line

Plastic body

- |             |                 |                |
|-------------|-----------------|----------------|
| 1. 11930-10 | Champagne Coupe | 0.28 l, 9 oz   |
| 2. 11929-10 | Margarita       | 0.25 l, 8 oz   |
| 3. 11928-10 | Martini         | 0.18 l, 6 oz   |
| 4. 11927-10 | Champagne Flute | 0.12 l, 4 oz   |
| 5. 11925-10 | Red Wine        | 0.25 l, 8 oz   |
| 6. 11926-10 | White Wine      | 0.23 l, 7.8 oz |



### OKTETT Wine & Drinking Glasses

2 pcs set

- |             |                   |                |
|-------------|-------------------|----------------|
| 1. 4270-591 | Beer Glass        | 0.35 l, 12 oz  |
| 2. 4260-386 | White Wine Glass  | 0.14 l, 4.7 oz |
| 3. 4266-589 | Red Wine Glass    | 0.22 l, 7.4 oz |
| 4. 4275-340 | Champagne Flute S | 0.13 l, 4.4 oz |
| 5. 4276-590 | Champagne Flute M | 0.17 l, 5.7 oz |





# Hydration Bottles



BPA-Free  
Made in Europe

## MELIOR® Water Bottle

- 1. 12053-01BTR Tritan body 0.5 l, 17 oz
- 2. 12072-01BTR Tritan body 0.5 l, 17 oz
- 3. 12075-01 Glass body 0.5 l, 17 oz



## MELIOR® Water Bottle

- 1. 12125-01 Tritan body 0.9 l, 30.5 oz
- 2. 12126-01 Tritan body 1.2 l, 40.5 oz
- 3. 12146-01 Glass body 0.9 l, 30.5 oz
- 4. 01-12146 Sleeve 0.9 l, 30.5 oz



## MELIOR® Water bottle

- Double wall vacuum stainless steel body
- 1. 12119-16 1.0 l, 34 oz
  - 2. 12057-16 0.5 l, 17 oz



## MELIOR® Water bottle

- Double wall vacuum stainless steel body
- 1. 12080-57-490 0.3 l, 10 oz
  - 2. 12080-57-448 0.3 l, 10 oz
  - 3. 12080-01-450 0.3 l, 10 oz
  - 4. 12080-01-448 0.3 l, 10 oz





# Cork

BODUM has a new design line with cork. One of nature's most beautiful and functional materials. Cork comes from the bark of cork oak which is a miracle in itself. Every 9 years you can harvest all the trees bark so that it is completely naked without damage. The trees can grow up to 200-300 years old.

Cork oak grows in the Mediterranean region, not least in Portugal which supplies about half of all the cork that is used in the world. We know the cork from wine bottles plugs, but because cork has so many good qualities it also moved into the home. Cork is thermal insulation, water and air-tight, elastic, light and soundproofing. It is also beautiful to look at and smooth to touch. Cork is a 100% natural and sustainable material and we have almost all the cork trees we need growing just outside our windows. All BODUM products are produced namely in our own factory in Portugal, where environmental responsibility already has our highest priority.



From breakfast in bed to cocktails on the terrace – serving meals, drinks and snacks has never been more stylish, thanks to this high-quality cork tray. Made of cork, which is renowned for its beauty and sustainability, the tray adds a touch of elegance to any occasion while being wonderfully impermeable and elastic. Chic details make it comfortable to hold and easy to carry from room to room, upstairs or into the garden.

CORK TRAY

Tray

Tray 100% made of cork

- 1. 11856-109 45 x 30 cm
- 2. 11864-109 30 x 20 cm



BODUM®'s BISTRO collection is fashioned from crisp white porcelain banded with a cork grips that work well while looking great. Hands stay comfortable on the non-slip grip and it wraps below the bottom of the cup, eliminating the need for coasters. A go-to piece for everything from café lattes to iced tea, the BISTRO features a tapered body, footless base, and a smooth lip.

BISTRO

Porcelain Mug

Porcelain mug with cork sleeve

- \*Only Porcelain is dishwasher safe
- 1. 11583-109 0.6 l, 20 oz
  - 2. 11582-109 0.3 l, 10 oz
  - 3. 11581-109 0.17 l, 6 oz



# Pour Over

## Coffee Makers

The POUR OVER promises excellent, rich taste and robust aroma while maintaining the natural oils of the ground coffee. For the perfect cup of coffee, simply fill the cone-shaped filter with freshly ground coffee and pour a small amount of heated water over them until soaked. Slowly pour the remaining hot water into the filter. Coffee will drip into the mouth-blown, borosilicate glass carafe and, in 3-4 minutes, will be ready to serve. Remove the filter from the carafe before serving and enjoy!



☒ No paper filter! ☒ No capsule!

- Borosilicate glass carafe
- Stainless steel mesh filter
- BPA-Free
- Made in Europe
- Dishwasher safe\*

### POUR OVER Coffee Maker

\*Cork and leather parts are not dishwasher safe

- 1. 11593-109S 12 cup, 1.5 l, 51 oz
- 2. 11571-109S 8 cup, 1.0 l, 34 oz
- 3. 11592-109S 4 cup, 0.5 l, 17 oz



### POUR OVER Double wall Coffee Maker

\*Cork and leather parts are not dishwasher safe

- 11682-109S 8 cup, 1.0 l, 34 oz



Borosilicate bowl  
 Made in Europe  
 Dishwasher safe\*



**HOT POT  
 Bowl**

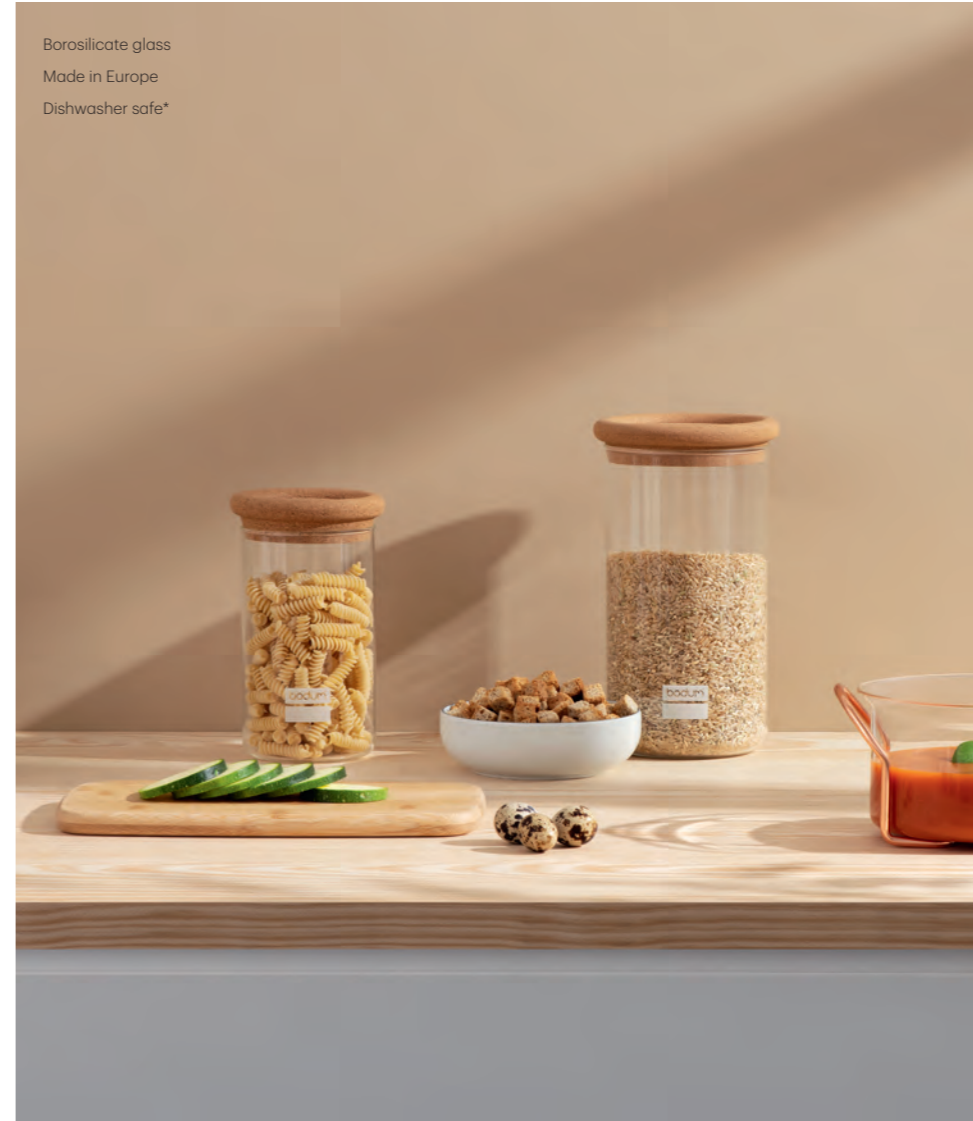
Borosilicate glass with cork base and silicone lid

\*Only glass is dishwasher safe

- 1. 4403-10-143 2.5 l, 85 oz
  - 2. 4402-10-143 1.0 l, 34 oz
  - 3. 4401-10-143 0.25 l, 8 oz
- K4403-143 3 pcs set



Borosilicate glass  
 Made in Europe  
 Dishwasher safe\*



**YOHKI  
 Storage Jar**

Borosilicate glass with cork lid

\*Only glass is dishwasher safe

- 1. 8687-109-2 1.9 l, 64 oz
- 2. 8700-109-2 2.5 l, 85 oz
- 3. 8650-109-2 2.0 l, 68 oz
- 4. 8600-109-2 1.0 l, 34 oz
- 5. 8560-109-2 0.6 l, 20 oz
- 6. 8525-109-2 0.25 l, 8 oz





The delightful MELIOR® Glögg decanter pays tribute to our Danish heritage (we've designed it with Denmark's wonderfully warming mulled wine in mind) and also enhances your enjoyment of the festive season. Wrapped snugly around the top of the carafe, the smooth cork sleeve ensures that no matter how hot you like your Glögg and other drinks, the decanter won't be too hot to handle.

#### MELIOR®

##### Glogg Decanter & Glogg Set

Borosilicate glass with cork and silicone parts

\*Only glass is dishwasher safe

1. 11785-109 8 cup, 1.0 l, 34 oz
2. 11766-109 8 cup, 1.0 l, 34 oz



1

2



'Melior' is the Latin word for 'better', which is highly appropriate, given that our aim with this finely crafted water infuser and wine decanter is to give you a better way to serve water or wine in your home or outdoors. The borosilicate glass carafe will never alter the taste of your chosen drink, while the natural cork stopper and base help to protect the liquid and keep the carafe stable.

#### MELIOR®

##### Wine Decanter & Water Infuser

Borosilicate glass with cork parts

\*Only glass is dishwasher safe

1. 11790-109 16 cup, 2.0 l, 68 oz
2. 11765-109 8 cup, 1.0 l, 34 oz



1

2



# eBODUM®

e-BODUM® inspires you to build a collection of power tools that reflect our core principle: Good design has to be functional and affordable.

Once you see past the good looks of e-BODUM®, each product's attributes and performance will make you a loyal fan! Not only will you appreciate the award-winning design of these products, e-BODUM® will bring the power and innovation necessary to make kitchen duties a breeze!



BISTRO  
Stand Mixer  
11381-01-3



- Powerful 700-watt motor with 7 variable speeds, which delivers up to twice the power of traditional stand mixers.
- Stainless steel mixing bowl holds 4.7l/160oz ingredients, and has a black rubber handle for easy grip.
- Removable splashguard and funnel that allows you to easily add ingredients, and eliminates countertop mess.
- Lift-assisted tilt head mixer that locks into place during use, and allows you to check the progress and add or remove the bowl.
- Rotating attachment provides an orbital motion for thorough mixing.
- Base suction cups on the appliance ensure it's completely stable during use.
- Includes non-stick coated dough hook, beater and whisk attachments. Additional accessories are available separately.
- Mixing bowl, splashguard and attachments are dishwasher safe.

Capacity: 4.7 l, 5 Qt, 160 oz

Measurements: 234 × 397 × 343mm

Material: Plastic, silicone, rubber, stainless steel, non-stick coated cast aluminum, chrome-plated steel

Rating Europe: 700 W, 220-240 V, 50-60 Hz

The Stand Mixer comes with the following attachments:

1 Stainless steel mixing bowl

1 Dough hook

1 Beater

1 Whisk



Dough hook Beater Whisk



Mix up a storm with the BISTRO food mixer. A stylish addition to any kitchen, this electric stand mixer makes light work of food preparation tasks.





MELIOR  
Air Fryer  
12069-01



- Air fryer that offers all the flavor of deep-fried food with little to no oil (and much less guilt!)
- Versatile appliance that also bakes, roasts and grills food
- Food is cooked using hot rapid air circulation and a top grill for low-fat frying and fast results
- Adjustable temperature up to 200°C/400°F, with 8 preset options for different food and methods of cooking
- Digital control panel for easy use, and timer alarms to alert you when the ingredients need shaking or the program is complete
- Detachable drawer and basket for easy access and cleaning
- Basket is dishwasher safe

Measurements: 368 × 316 × 342mm  
Material: Plastic, stainless steel, Aluminium  
Rating Europe: 2000W, 220-240 V, 50-60 Hz



Do you love crispy, fried treats but wish there was a healthier way to enjoy your favorite dishes? The MELIOR Air Fryer offers the perfect solution.



BISTRO  
Electric Grill  
11921-01

- Electric contact grill for faster, healthier cooking
- Suitable for bread, paninis, meat, fish, vegetables and more
- Two detachable ribbed grill plates for double-sided cooking
- Juice drainage channel to drain away fat and oil
- High temperature grill plates seal in flavor
- Grill plates are dishwasher safe for easy cleaning
- Cool touch handle for safe usage
- Cord retainer for neat and safe storage
- LED Indicator under the buttons indicates when the plates reached the desired temperature.
- Defrost setting (55°C)
- Temperature range: 100-230°C.

---

Measurements: 338 x 347 x 123 mm  
Material: Plastic, Aluminium, Stainless Steel,  
Silicone, Non-Stick Coating  
Rating Europe: 2200W, 220-240 V, 50-60 Hz

---

Whether you're preparing sizzling steaks, toasted paninis, fish fillets or cooked veggies, this grill offers a quick, healthy and easy option for a whole range of meals.





BISTRO SET  
Electric Blender Stick  
K11179-01-3



- The slim and sleek design is perfect for reaching deep into bowls, pots, and pitchers.
- Includes three stainless steel attachments: Beater to whip up cream and egg whites; Whisk to blend mayos and sauces and multiblade for soups and smoothies.
- Includes a beaker with silicone lid ideal for pureeing and food storage.
- Two push-activated buttons control speed settings for convenient, one-handed use. 15'000 rotations per minute in low speed, 20'000 in high speed make for a powerful kitchen tool.

Measurements: 67 x 67 x 358mm  
Material: Plastic, stainless steel, silicone  
Rating Europe: 200 W, 220-240 V, 50-60 Hz  
Rounds per minute EU (r/min): 23'500 +/-15%

The Blender Stick comes with the following attachments:

- 1 Whisk
- 1 Multiblade
- 1 Beater
- 1 Beaker with lid
- 1 Tool for removing the attachments



This BISTRO SET Electric Blender Stick is very convenient. Ideal for pureeing, whipping cream and beating egg whites as well as for smoothies and soups.



BISTRO SET  
Electric Blender Stick  
K11179-16-4



- Electric hand blender with two speed settings, suitable for blending, chopping, beating, whisking and pureeing
- Includes three stainless steel attachments: a multi-blade, whisk and beater
- Simple, push button power control offering 15,000 or 20,000 revolutions per minute
- Ergonomically designed handle for optimum comfort and control
- BPA-free plastic beaker with silicone lid for mixing and storing

Measurements: 67 × 67 × 358mm  
Material: Plastic, stainless steel, silicone  
Rating Europe: 200 W, 220-240 V, 50-60 Hz  
Rounds per minute EU (r/min): 23'500 +/-15%

The Blender Stick comes with the following attachments:

1 Whisk                    1 Multiblade  
1 Beater                   1 Beaker with lid  
1 Tool for removing the attachments



This multi-function kitchen tool gives you the power to blend, chop, whisk, beat and puree – so you can whip up numerous culinary creations, quickly and conveniently.





BISTRO  
Hand Mixer  
11532-01



- Its five powerful speeds can handle anything from blending a simple sauce to kneading a bread dough.
- Includes two stainless steel attachments: Beaters to blend, mix and puree (whipping cream, beating egg whites and blending cocktail sauces); Dough hooks to knead cake batters, bread or pizza doughs.
- Slip-proof silicone feet allows the mixer to stand upright on its own.
- Speed control button that slides for one-handed mixing.
- The stainless steel attachments are dishwasher safe.
- Handy in use and space efficient in your kitchen cabinet.

Measurements: 170 x 95 x 172mm

Material: Plastic, stainless steel, silicone

Rating Europe: 185 W, 220-240 V, 50-60 Hz

The Hand Mixer comes with the following attachments:

2 pcs Beaters set

2 pcs Dough hooks set



Beaters

Dough hooks



This handy Hand Mixer can handle anything from whipped cream to mashed potatoes, kneading bread dough or mixing cake batters.



BISTRO  
Hand Mixer  
11532-XY-4



- Its five powerful speeds can handle anything from blending a simple sauce to kneading a bread dough.
- Includes two stainless steel attachments: Beaters to blend, mix and puree (whipping cream, beating egg whites and blending cocktail sauces); Dough hooks to knead cake batters, bread or pizza doughs.
- Slip-proof silicone feet allows the mixer to stand upright on its own.
- Speed control button that slides for one-handed mixing.
- The stainless steel attachments are dishwasher safe.
- Handy in use and space efficient in your kitchen cabinet.

Measurements: 157 × 96 × 175mm

Material: Plastic, stainless steel, silicone

Rating Europe: 185W, 220-240 V, 50-60 Hz

The Hand Mixer comes with the following attachments:

2 pcs Beaters set

2 pcs Dough hooks set



This handy Hand Mixer can handle anything from whipped cream to mashed potatoes, kneading bread dough or mixing cake batters.



BISTRO  
Toaster  
10709-01-3



- Adjustable-width toasting slots create a secure grip around food while toaster is in use.
- Variable browning temperature control and defrost function and stop button for perfect defrosting and crisping of bread.
- Pop-up warming rack for rolls, croissants, bread and more.
- Integrated slide-out crumb tray for easy cleaning.
- Footed base with cord retainer to adjust cord length and store neatly.
- Cool touch exterior is easy to clean.

Measurements: 155 x 265 x 215mm

Material: Metal, stainless steel, plastic, rubber, silicone

Rating Europe: 940 W, 220-240 V, 50-60 Hz



With five variable browning settings – taking your bread from light and golden to dark and bronzed, and everything in between – your toast will be done exactly the way you like it, every time.



BISTRO  
Toaster 2 Slices  
10709-16-4



- Adjustable-width toasting slots create a secure grip around food while toaster is in use.
- Variable browning temperature control and defrost function and stop button for perfect defrosting and crisping of bread.
- Pop-up warming rack for rolls, croissants, bread and more.
- Integrated slide-out crumb tray for easy cleaning.
- Footed base with cord retainer to adjust cord length and store neatly.
- Cool touch exterior is easy to clean.

---

Measurements: 285 x 160 x 197mm

---

Material: Stainless steel, galvanized iron,  
aluminium coated iron, plastic

---

Rating Europe: 870 W, 220-240 V, 50-60 Hz

With five variable browning settings – taking your bread from light and golden to dark and bronzed, and everything in between – your toast will be done exactly the way you like it, every time.





BISTRO  
Double Wall Water Kettle  
11659-01 1.1l, 37 oz



- The inner glass wall is made of borosilicate glass, the outer one of transparent plastic. It protects the glass, insulates, and keeps you from burning your fingers.
- The water only comes in contact with glass – the process is therefore BPA-Free.
- Mesh-screened spout captures chalk while pouring.
- The transparent container makes it easier to control the water level. The scale line indicates liters, ounces and cups.
- Manual On/Off switch plus temperature sensor for automatic shut off and added safety.
- Keep warm for up to 30 min.

Capacity: 1.1l, 37 oz  
Measurements: 145 x 230 x 260mm  
Material: Plastic, silicone, stainless steel,  
borosilicate glass, metal, rubber  
Rating Europe: 1500 W, 220-240 V, 50-60 Hz



Tea aficionados take note! This electric kettle has been crafted especially for tea lovers, where precision of temperature is crucial to the perfect brew.





BISTRO  
Water Kettle

1. 11452-01 1.0l, 34 oz
2. 11451-01 0.5l, 17 oz



- The heating element is safely tucked away at the bottom of the kettle and doesn't get in contact with the water.
- The cordless container can be positioned on its 360 degree base and easily remove for cordless pouring.
- The lid opens at the push of a button.
- Mesh-screened spout captures chalk while pouring.
- Easily readable water level scale to avoid wasting water and energy.

Capacity: 1.0l, 34oz – 0.5l, 17oz

Measurements

1. 125 x 200 x 224mm
2. 172 x 100 x 195mm

Material: Plastic, stainless steel, silicone

Rating Europe

1. 1300 W, 220-240 V, 50-60 Hz
2. 700 W, 220-240 V, 50-60 Hz

The electric BISTRO Water Kettle was developed to boil water quickly and energy efficiently – ideal for coffee, tea and instant soups.



## IBIS

## Water Kettle

1. 5500-57-2 1.5l, 51 oz
2. 11787-57 1.0l, 34 oz
3. 11786-57 0.5l, 17 oz



Capacity: 1.5l, 51oz – 1.0l, 34oz – 0.5l, 17oz

## Measurements

1. 134 × 237 × 267mm
2. 121 × 226 × 245mm
3. 104 × 208 × 215mm

Material: Plastic, silicone, metal, rubber, stainless steel

## Rating Europe

1. 2020 W, 220–240 V, 50–60 Hz
2. 1190 W, 220–240 V, 50–60 Hz
3. 760 W, 220–240 V, 50–60 Hz

- The heating element is safely tucked away at the bottom of the kettle and doesn't get in contact with the water.
- Mesh-screened spout captures chalk while pouring.
- Easily readable water level scale to avoid wasting water and energy.
- Brings up to 1.5l of water to a rolling boil.
- Power automatically shuts off when water boils.



The IBIS' effectiveness in bringing water to a fast boil and its typical oval shape designed to take up as little counter space as possible.



## BISTRO

Gooseneck water kettle

11940-16 1.0l, 34 oz



- Ergonomic, elegant design enables you to easily control the speed and consistency of the water flow for optimum pour over brewing.
- Made of attractive, durable stainless steel.
- All stainless steel inner wall.
- Supremely comfortable, non-slip handle and knob protect your fingers from heat.
- Sturdy base boils water at the flick of a switch and features an indicator light and automatic shut-off for peace of mind.

Capacity: 1.0 l, 34 oz  
 Measurements: 133 x 226 x 290mm  
 Material: Stainless steel, plastic, rubber, silicone  
 Rating Europe: 1200 W, 220-240 V, 50-60Hz



With its slim, elegant spout and powerful boil, the electric gooseneck kettle is a key gadget for at-home baristas.



BISTRO  
Electric Water Kettle  
12103-16 1.0l, 34 oz

- Ergonomic, elegant design enables you to easily control the speed and consistency of the water flow for optimum pour over brewing.
- Made of attractive, durable stainless steel. All stainless steel inner wall.
- Supremely comfortable, non-slip handle and knob protect your fingers from heat.
- The sturdy base features an ON/OFF button along with a LCD display that allows you to set the desired temperature.
- For even more comfort this water Kettle is WiFi enabled, so it can be operated via the Bodum app that allows you to set the keep warm mode, set a turn on schedule, control the temperature and turn on and shut off.

---

Capacity: 1.0 l, 34 oz

---

Measurements: 133 x 226 x 290mm

---

Material: Stainless steel, plastic, rubber, silicone

---

Rating Europe: 1200 W, 220-240 V, 50-60Hz



With its slim, elegant spout and powerful boil, the electric gooseneck kettle is a key gadget for at-home baristas.



OTTONI  
Electric water kettle  
12019-16 1.0 l, 34 oz

- This classic and stylish water kettle with the capacity of 1.0 l is one of the best good looking appliances to have in the countertop of your kitchen.
- With the all stainless steel inner wall, the Bodum Ottoni is the true reference that quality and design are aligned in the perfect way.
- Heating with an indicator light, will visually provide the information when the item is operating.
- Automatic shut-off when the water has boiled for safety.
- Easy to clean.

---

Capacity: 1.0 l, 34 oz

---

Measurements: 220 x 265 x 210mm

---

Material: Stainless steel, plastic, silicone

---

Rating Europe: 1380 W, 220-240 V, 50-60 Hz



If design, good looking and quality is what you are looking for in a water kettle, the Bodum Ottoni is the model that you need.



BARISTA  
Electric Milk Frother  
12179-01

- Bistro milk frother was designed to make you a professional Barista without leaving your doorstep.
- Small and compact electric milk frother has convenient cord storage in the removable base, perfect if you plan to leave out on the kitchen counter.
- Features a sleek design that auto shut off when finished.
- Transparent lid allows the frothing to be observed.
- Bistro milk frother heats 1 cup (300 ml) of milk at a time; perfect for serving yourself or your family.
- Material: non-stick coating interior ensures easy cleaning and durability; stainless steel body.
- The handle provides stability to hold and makes it safer to pour the foam on the cup.

---

Capacity

MIN: approx. 90 ml, 3 oz

MAX ☉: approx. 190 ml, 6.4 oz

MAX: approx. 300ml, 10 oz

---

Measurements: 103 x 150 x 202 mm

Material: Plastic, stainless steel

---

Rating Europe: 500 W, 220-240 V, 50-60 Hz

---

Rounds per minute (r/min): 3500-3900

This magical little device heats and froths milk, so you can recreate barista-level coffee from the comfort of your home.





BARISTA  
Electric Milk Frother  
11901-01



- Barista milk frother was designed to make you a professional Barista without leaving your doorstep.
- Small and compact electric milk frother has convenient cord storage in the removable base, perfect if you plan to leave out on the kitchen counter.
- The BISTRO Barista whips up luxurious hot froth and creamy cold froth, it heats milk for a mouth-watering café latte, and has a special hot chocolate program.
- Features a sleek design that auto shut off when finished.
- Transparent lid allows the frothing to be observed.
- Barista milk frother heats 1 cup (400 ml) of milk at a time; perfect for serving yourself or your family.
- Milk frother beaker is dishwasher safe.
- Material: non-stick coating interior ensures easy cleaning and durability; stainless steel body.

Capacity

MIN: approx. 120 ml

MAX ☉: approx. 225 ml

MAX: approx. 400 ml

Measurements: 107 × 107 × 215 mm

Material: Plastic, stainless steel, silicone

Rating Europe: 600 W, 220–240 V, 50–60 Hz

Rounds per minute (r/min): 3500–3900



Delicious, warm milk froth brings  
any cup of coffee to its perfection!







BISTRO  
Electric Milk Frother  
11902-01



- Bistro milk frother was designed to make you a professional Barista without leaving your doorstep.
- Small and compact electric milk frother has convenient cord storage in the removable base, perfect if you plan to leave out on the kitchen counter.
- Features a sleek design that auto shut off when finished.
- Transparent lid allows the frothing to be observed.
- Bistro milk frother heats 1 cup (300 ml) of milk at a time; perfect for serving yourself or your family.
- Material: non-stick coating interior ensures easy cleaning and durability; stainless steel body.

---

Capacity

MIN: approx. 90 ml

MAX ☉: approx. 190 ml

MAX: approx. 300 ml

---

Measurements: 103 × 103 × 202mm

Material: Plastic, stainless steel, silicone

---

Rating Europe: 500 W, 220-240 V, 50-60 Hz

---

Rounds per minute (r/min): 3500-3900

Delicious, warm milk froth brings  
any cup of coffee to its perfection!



BISTRO  
Electric Milk Frother  
11870-01

- Creates rich and thick milk foam for coffee, cappuccino and lattes.
- Add up to 1 cup of milk, top with the crystal-clear, shatterproof lid and push the button to create steamed milk or frothy foam.
- Heats and froths up to a cup of milk at a time.
- The frother lifts from the power base for easy pouring and includes an auto shut-off feature.
- Non-stick coating interior ensures easy cleaning and durability.

---

Capacity  
MIN: approx. 75 ml  
MAX ☉: approx. 190 ml  
MAX: approx. 300 ml

---

Measurements: 109 × 109 × 202mm

---

Material: Plastic, chrome plated plastic, stainless steel, non-stick coated stainless steel, silicone

---

Rating Europe: 550-650 W, 220-240 V, 50 Hz

---

Rounds per minute (r/min): 4'100



Delicious, warm milk froth brings any cup of coffee to its perfection! From lattes to cappuccinos, it turns milk into frothy foam at approx. 70°C in around 1 minute.





BISTRO  
Electric Coffee Grinder  
11160-01-3



- Compact and small – this space efficient coffee grinder can easily be left on the kitchen counter.
- The transparent lid allows you to control the grinding progress – the longer the grind, the finer the grounds.
- The power cord can be tucked away within the grinder.
- Easy, push-button control allows for pulse action or continuous grind.
- Strong, durable stainless steel cutting blade that spins at a precise RPM.
- Convenient cord storage in base.
- Max. 60g coffee beans

Measurements: 90 × 95 × 166mm  
Material: Plastic, stainless steel, rubber  
Rating Europe: 150 W, 220-240 V, 50-60 Hz  
Rounds per minute (r/min): 26'000+/-20%



Grinds coffee beans from coarse to fine quickly and efficiently with its strong, durable, stainless steel cutting blade.



C-MILL  
Blade Coffee Grinder  
5679-01



- Neat, compact blade grinder that holds 45g coffee beans.
- Uses a durable, stainless steel blade that spins at a precise RPM.
- Simple push button control for pulse or continuous grind.
- Transparent lid makes it easy to achieve the desired coarseness of your beans.
- Silicone pad in lid attachment prevents coffee grinds from accumulating in the join.
- Convenient cord storage in the base.
- Made of stainless steel, plastic, rubber and silicone.
- Available in a choice of colors.

Measurements: 98 × 117 × 174mm

Material: Plastic, stainless steel, rubber, Silicone

Rating Europe: 150 W, 220-240 V, 50-60 Hz

Rounds per minute (r/min): 22'000

For a robust, aromatic cup of joe that's bursting with flavor, make the C-MILL blade coffee grinder part of your coffee routine.



## BISTRO

## Electric Coffee Grinder

1. 11160-16-4PL
2. 11160-57-4PL
3. 11160-57-4SS



- Compact and small – this space efficient coffee grinder can easily be left on the kitchen counter.
- The transparent lid allows you to control the grinding progress – the longer the grind, the finer the grounds.
- The power cord can be tucked away within the grinder.
- Easy, push-button control allows for pulse action or continuous grind.
- Strong, durable stainless steel cutting blade that spins at a precise RPM.
- Convenient cord storage in base.
- Max. 60g coffee beans

---

 Measurements

1. 88 × 96 × 166mm
2. 88 × 96 × 166mm
3. 90 × 97 × 166mm

---

 Material: Plastic, stainless steel, rubber

---

 Rating Europe: 150 W, 220-240 V, 50-60 Hz

---

 Rounds per minute (r/min): 22'000

Grinds coffee beans from coarse to fine quickly and efficiently with its strong, durable, stainless steel cutting blade.





BISTRO  
Burr Coffee Grinder  
10903-01-3



- This space-saving grinder holds an amazing 220gr of coffee and therefore allows for larger quantities in one go.
- 12 settings allow you to grind from a coarse French Press to a fine espresso with the ability to micro-adjust between settings.
- Programmable time function for even easier handling.
- The wide open funnel prevents spilling of the beans.
- Tightly fitting plastic lid keeps the grounds from spilling.
- Equipped with a friction clutch, preventing damage to the grinding gear by the presence of small stones.

Measurements: 120 × 156 × 275mm  
Material: Plastic, rubber, silicone, borosilicate glass, stainless steel  
Rating Europe: 160 W, 220-240 V, 50-60 Hz  
Rounds per minute (r/min): 720+/-15%



Grinder crushes beans between stainless steel conical burrs rather than slicing them which preserves bean's intrinsic flavor and aroma.



BISTRO  
Electric Coffee Grinder  
11750-01



- Neat, space-saving device that holds up to 220g coffee beans.
- Adjustable grind with 12 settings, taking your beans from espresso to French press with ease.
- Clear plastic coffee catcher with lid.
- The conical burr provides a consistent grind with no sharpening required. It spins slower than a wheel model, making it quieter and less messy.
- Made from stainless steel, plastic, rubber & silicone.
- Available in a choice of colors.

Measurements: 165 × 302 × 175mm

Material: Plastic, stainless steel, rubber

Rating Europe: 160 W, 220-240 V, 50-60 Hz

Rounds per minute (r/min): 720+/-15%



Unlock the potential of your coffee beans  
with the BISTRO electric coffee grinder.



BISTRO  
Adjustable Blade Coffee Grinder  
12041-01



- Compact, adjustable blade grinder that holds 84g coffee beans.
- Uses a durable, stainless steel blade that spins at a precise RPM.
- Five grind settings range from fine to coarse.
- Cup selector slide allows you to choose the amount of coffee you require, from 3 to 12 cups.
- Simple, automatic grinding process for greater consistency.
- Engraved lines on the grinding bowl help you to judge the amount of coffee beans required.
- The grinding bowl is removable for easy cleaning and is dishwasher safe.
- Made of stainless steel, plastic, rubber and silicone

Measurements: 120 x 117 x 196mm  
Material: Plastic, stainless steel, rubber, Silicone  
Rating Europe: 220 W, 220-240 V, 50-60 Hz  
Rounds per minute (r/min): 22'000





The new BISTRO adjustable blade coffee grinder makes it even easier to achieve the exact grind consistency and amount you require.





BISTRO  
 Programmable Coffee Maker  
 11754-01 1.5 l, 51 oz

- Programmable coffee maker that can be set up to 24 hours in advance for convenience.
- Glass jug with an ergonomic, non-slip handle for easy pouring.
- Brewing system uses a shower head that distributes water evenly over the beans for a balanced, flavorful taste.
- Permanent, fine-mesh, stainless steel filter that results in a full-bodied aroma and pure taste, while eliminating the need for wasteful paper filters.
- Stain-resistant heating plate keeps your coffee warm for up to 25 minutes after brewing.
- Easy-to-read, backlit LED display.
- Generous 1.5-liter capacity that brews up to 12 cups of delicious coffee.

 No paper filter!  No capsule!

Capacity: 1.5 l, 51 oz

Measurements: 281 x 180 x 367mm

Material: Plastic, silicone, glass, stainless steel, galvanized steel, nickel plated steel

Rating Europe: 900 W, 220-240 V, 50-60 Hz





Wake up to the delicious aroma of freshly brewed coffee every day with the BISTRO programmable coffee maker.



BISTRO  
 Programmable Coffee Maker  
 12095-01 1.5 l, 51 oz

- Programmable coffee maker that can be set up to 24 hours in advance for convenience.
- Glass jug with an ergonomic, non-slip handle for easy pouring.
- Brewing system uses a shower head that distributes water evenly over the beans for a balanced, flavorful taste.
- Permanent, fine-mesh, stainless steel filter that results in a full-bodied aroma and pure taste, while eliminating the need for wasteful paper filters.
- Stain-resistant heating plate keeps your coffee warm for up to 25 minutes after brewing.
- Easy-to-read, backlit LED display.
- Generous 1.5-liter capacity that brews up to 12 cups of delicious coffee.

 No paper filter!  No capsule!

Capacity: 1.5 l, 51 oz

Measurements: 281 x 180 x 367mm

Material: Plastic, silicone, glass, stainless steel,  
galvanized steel, nickel plated steel

Rating Europe: 900 W, 220-240 V, 50-60 Hz





Wake up to the delicious aroma of freshly brewed coffee every day with the BISTRO programmable coffee maker.



CHAMBORD  
 Programmable Espresso Maker  
 12099-16 6 Cups, 0.35 l, 12 oz

- Electric espresso maker in the style of a traditional stovetop coffee maker.
- Operated by a simple panel control with touch buttons and a back-lit LED display.
- Capacity: 6 cups (0.35l) or 3 cups (0.18l).
- Can be started manually, or set for a delayed start using the programmable timer.
- WiFi enabled, so the device can be operated via the Bodum app.
- Coffee funnel and water chamber made from premium quality stainless steel with a discreet Bodum logo on the base of the chamber.
- Detachable base for cord-free pouring.
- Easy and safe to use – automatic shut off when machine has finished boiling and cool touch handle for pouring.
- Easy to clean.

 No paper filter!  No capsule!

Capacity: 0.35 l / 12 oz

Measurements: 200 x 118 x 274mm

Material: Plastic, rubber, stainless steel, silicone

Rating Europe: 500 W, 220-240 V, 50-60 Hz





Simple, stylish and sustainable, this programmable espresso maker allows you to enjoy delicious, authentic coffee, without the fuss and expensive of a fancy machine or use of wasteful plastic capsules.



CHAMBORD  
 Electric Espresso Maker  
 12064-16 6 Cups, 0.35 l, 12 oz

- Electric espresso maker in the style of a traditional stovetop coffee maker.
- Capacity: 6 cups (0.35l) or 3 cups (0.18l).
- Coffee funnel and water chamber made from premium quality stainless steel with a discreet Bodum logo on the base of the chamber.
- Detachable base for cord-free pouring.
- Easy and safe to use – automatic shut off when machine has finished boiling and cool touch handle for pouring.
- Easy to clean.

 No paper filter!  No capsule!

Capacity: 0.35 l / 12 oz

Measurements: 165 x 116 x 260mm

Material: Plastic, rubber, stainless steel

Rating Europe: 500 W, 220-240 V, 50-60 Hz



Simple, stylish and sustainable, this programmable espresso maker allows you to enjoy delicious, authentic coffee, without the fuss and expensive of a fancy machine or use of wasteful plastic capsules.





## ePEBO

Vacuum/Siphon Coffee Maker

11744-01EURO-01 8 cup, 1.0 l, 34 oz

- This brewing method extracts all precious oils of your favorite coffee, delivering an exceptional cup of coffee.
- Funnel made of borosilicate glass, users can view the brewing process from start to finish.
- The coffee maker is removed from the heat and vacuum pressure draws the brewed coffee downward through a strainer, and into the bottom chamber for serving.
- Stain resistant heating plate keeps coffee warm for up to 30 minutes.
- The brewing time and temperature are perfectly calibrated, ensuring a perfect cup of coffee with each brew.

☒ No paper filter! ☒ No capsule!

Capacity: 1.0 l, 34 oz

Measurements: 200 × 232 × 364mm

Material: plastic, stainless steel,

borosilicate glass, rubber, silicone

Rating Europe: 1000 W, 220-240 V, 50-60 Hz



The ePEBO vacuum/siphon coffee maker is the modern version of PEBO, and has been part of the Bodum range long ago.



ePEBO  
 Vacuum/Siphon Coffee Maker  
 11822-01EURO-320 4 cup, 0.5 l, 17 oz

- This brewing method extracts all precious oils of your favorite coffee, delivering an exceptional cup of coffee.
- Funnel made of borosilicate glass, users can view the brewing process from start to finish.
- The coffee maker is removed from the heat and vacuum pressure draws the brewed coffee downward through a strainer, and into the bottom chamber for serving.
- Stain resistant heating plate keeps coffee warm for up to 30 minutes.
- The brewing time and temperature are perfectly calibrated, ensuring a perfect cup of coffee with each brew.

☒ No paper filter! ☒ No capsule!

Capacity: 0.5 l, 17 oz

Measurements: 180 × 220 × 326mm

Material: plastic, stainless steel, borosilicate glass, rubber, silicone

Rating Europe: 1000 W, 220-240 V, 50-60 Hz



The ePEBO vacuum/siphon coffee maker is the modern version of PEBO, and has been part of the Bodum range long ago.



BISTRO  
Barista Scale  
11915-01

- Features a rubber protective pad that helps protect scale from water spillage and surface scratches. Not waterproof.
- The silicone protective pad can be removed and is also dishwasher safe.
- The scale is accurate to within 0.1g, ensuring that you always get the exact quantity of coffee you want.
- Easy to read backlit LCD display.
- Requires 3 AAA batteries.
- Weighing capacity up to 5000g.
- Timer feature.
- Possibility to switch or convert from g/ml to lb/oz g/ml + lb/oz.

Capacity: 5000 g  
Measurements: 157 × 134 × 26,75mm  
Material: Steel, rubber, plastic  
The Barista Scale requires: 3 AAA batteries



The sleek design and functionality of the BISTRO scale combine to make your brewing experience smooth and convenient.



MOCCA  
Beam Heater  
11918-16US

- The beam heater is specially designed for heating vacuum/ siphon coffee makers more safely.
- Generates a more consistent heating resource over alcohol lamp or butane burner.
- Good insulation, corrosion resistance, abrasion resistance, heat resistance.
- Switch the heater off after four minutes, and the brewed coffee passes through a filter and back into the globe. The result is a well-rounded brew with the toastiness of French press, minus the grit.
- After brewing, the heater can also be used to keep the coffee warm above its seductive glow.

---

Measurements: 250 × 205 × 165mm  
Material: rubber, plastic, glass, stainless steel  
Rating US: 430 W, 120 V, 60 Hz

---



MOCCA  
Vacuum/Siphon Coffee Maker  
1. 11862-109 8 cup, 1.0 l, 34 oz  
2. 11863-109 4 cup, 0.5 l, 17 oz



- Vacuum brew method delivers balanced and flavorful cup of coffee.
- Funnel and lower chamber made of heat resistant borosilicate glass, users can view the brewing process from start to finish.
- Stainless steel handle with an easy to grip, non-slip handle made of cork.
- Vacuum/siphon brewed coffee produces cleaner, richer, and smoother cup of coffee by maximizing the essential oils from the brew.
- Borosilicate glass chambers and the stainless steel handle are easy to clean.

---

No paper filter!  No capsule!  
Capacity 1.0 l, 34 oz – 0.5 l, 17 oz  
Measurements  
1. 200 × 140 × 400mm  
2. 190 × 130 × 370mm  
Material: cork, stainless steel, glass, rubber, plastic, metal

---





Online shop  
Shop-In-Shops  
Stores

**AUSTRALIA**SHOP-IN-SHOPS

Peter's of Kensington, Sydney, NSW

**PARTNERS**

Amazon  
Catch  
Chef's Hat  
Costco  
Everten  
Harvey Norman Commercial  
Kitchen Warehouse  
Minimax  
Myer  
Peter's of Kensington (NSW)  
Qantas Frequent Flyer store  
Sauvage Urbain (ACT)

**Online shop Australia**  
www.bodum.com

**AUSTRIA****PARTNERS**

Cuisinarum, Singerstrasse 14,  
1010 Wien  
J. Frühauf KG, Kaiserstrasse 15,  
6900 Bregenz  
Krawany, Herzogsgasse 1, 2340  
Mödling

**Online shop Austria**  
www.bodum.com

**BAHRAIN**SHOP-IN-SHOPS

Tavola-Bahrain City Centre,  
Manama  
Virgin Megastores, Bahrain

**BELGIUM**

**Online shop Belgium**  
www.bodum.com

**CANADA**

**Online shop Canada**  
www.bodum.com

**CHINA**

Tmall.hk  
JD.com.International  
hello@bodum.cn

**DENMARK**

**Online shop Scandinavia**  
www.bodum.com

**FINLAND**

**Online shop Finland**  
www.bodum.com

**FRANCE**SHOP-IN-SHOPS

BHV Marais, Rue de Rivoli, Paris 4e  
Bon Marché, 24 rue de Sèvres, Paris  
7ème  
Galeries Lafayette Maison, 35, Boul.  
Haussmann, Paris 9ème  
Printemps Beauté Maison, 64, Boul.  
Haussmann Paris 9ème

**PARTNERS**

Alice Delice  
Boulangier  
Cuisine Plaisir  
Culinarion  
Darty  
Fnac  
La Bovida  
La Samaritaine  
Magasins BHV  
Magasins Galeries Lafayette  
Magasins Printemps  
Maison à Vivre  
Monoprix  
Zodio  
Et dans plus de 100 torréfactons en  
France (Coffea, Comptoirs Richard,  
Malongo, etc...)

**Online shop France**  
www.bodum.com

**GERMANY****PARTNERS**

Abt, Ulm  
Ausgewählte Tchibo Filialen  
Design Shop Bauhaus Dessau  
Galeria Karstadt Kaufhof  
Ausgewählte EDEKA Märkte  
KaDeWe, Berlin  
Kaffeerösterei Burg, Hamburg  
Kölner Kaffeemanufaktur, Köln  
LeichtSinn, Karlsruhe  
Oberpollinger, München  
Plum's Kaffee, Aachen  
Schafferer, Freiburg

Speicherstadt Kaffeerösterei,  
Hamburg  
Wohncafé, Weimar  
Manufactum

**Online shop Germany**  
www.bodum.com

**IRELAND**

**Online shop Ireland**  
www.bodum.com

**ITALY****PARTNERS**

La Rinascente

**Online shop Italy**  
www.bodum.com

**JAPAN**

**Online shop Japan**  
www.bodum.com

**KOREA**

Blue Bottle Korea  
Emart/Emart Traders  
COSTCO  
Lotte Mart

**Online shop Korea**  
www.bodum.com

**KUWAIT**SHOP-IN-SHOPS

Puffin  
Tavola, Debenhams The Avenues  
Tavola, Al Tilal Complex  
Williams-Sonoma  
Virgin Megastores, Kuwait

**LUXEMBOURG**

**Online shop Luxembourg**  
www.bodum.com

**NETHERLANDS**

**Online shop Netherlands**  
www.bodum.com

**NEW ZEALAND**SHOP-IN-SHOPS

Ballantynes, Christchurch  
David Jones

**PARTNERS**

Ballantyne's  
Farmers  
Living & Giving  
Moore Wilson  
Stevens  
JB Hifi  
Heathcote Appliances

**Online shop New Zealand**  
www.bodum.com

**NORWAY**

**Online shop Norway**  
www.bodum.com

**OMAN**SHOP-IN-SHOPS

Virgin Mega Store  
Tavola, Al Noor Plaza Muscat  
Tavola, Mall of Oman

**Online shop Poland**  
www.bodum.com

**PORTUGAL**

**Online shop Portugal**  
www.bodum.com

**QATAR**SHOP-IN-SHOPS

Monoprix  
Tavola, Doha City Centre  
Tavola, Doha Festival City  
Tavola, Gate Mall  
Tavola, Mall of Qatar  
Tavola, Royal Plaza Doha  
Virgin Mega Store Qatar

**SAUDI ARABIA**SHOP-IN-SHOPS

Amzon.sa  
Noon.com  
Tavola, Olaya, Riyadh  
Tavola, Tahluya Park, Jeddah

Virgin, Megastore, Saudi  
Crate & Barrel, Saudi

**SINGAPORE**SHOP-IN-SHOPS

Takashimaya, Orchard  
Tangs, Orchard  
Tangs, Vivo City

**Online-shop Singapore**  
www.bodum.com

Krisshop.com  
Amazon.sg  
Lazada

**SPAIN****PARTNERS**

Gadgets & Cuina  
Casa Delfin  
Cafés la Brasileña

**Online shop Spain**  
www.bodum.com

**SWEDEN**

**Online shop Sweden**  
www.bodum.com

**SWITZERLAND****PARTNERS**

Coop City  
Globus  
Jelmoli  
Loeb, Bern  
Manor  
Möbel Pfister  
Muff Haushalt, Sissach  
Muff Haushalt, Winterthur  
Regalino, Langenthal  
Sibler, Zürich

**Online shop Switzerland**  
www.bodum.com

**TAIWAN**SHOP-IN-SHOPS

Big Ciyt, Hsinchu, E. Dist.  
Breeze Center, Taipei, Songshan  
Dist.  
(Fu Xing)

Breeze Center, Taipei, Songshan  
Dist.  
(Nanjing East Road)  
Chungyo, Taichung, N. Dist.  
Feds, Chiayi, W. Dist.  
Feds, Hsinchu, E. Dist.  
Feds, Hualien, Heping Rd,  
Zhongzheng Dist.  
Feds, Kaohsiung, Lingya Dist.  
Feds, Taichung, Xitun Dist.  
Feds, Tainan, E. Dist.  
Feds, Taipei, Zhongzheng Dist.  
Feds, Taipei Banqiao Dist.  
Feds, Taoyuan, Zhongzheng Rd  
Hanshin, Cianjin District Dist.  
Hanshin, Kaohsiung, Zuoying Dist.  
Hanshin Arena, Kaohsiung, Zuoying  
Dist.  
Leeco Outlet, Taichung  
Mega city, Taipei, Banqiao Dist.  
Miramar, Taipei, Zhongshan Dist.  
Park Lane, Taichung, W Dist.  
Section 1, Zhongxiao W. Rd  
Shin Kong Mitsukoshi, Chiayi, W.  
Dist.  
Shin Kong Mitsukoshi, Kaohsiung,  
Zuoying Dist.  
Shin Kong Mitsukoshi, Taichung,  
Xitun Dist.  
Shin Kong Mitsukoshi, Tainan  
Shin Kong Mitsukoshi, Taoyuan,  
Taoyuan Station  
Shin Kong Mitsukoshi, Taipei,  
Zhongshan Dist.  
Shin Kong Mitsukoshi A8, Taipei,  
Xinyi Dist.  
Shin Kong Mitsukoshi A9, Taipei,  
Xinyi Dist.  
Shin Kong Mitsukoshi-Tainan Place,  
Tainan,  
W.Central Dist.  
Shin Kong Mitsukoshi, Chiayi, W  
Dist.  
Sogo, Chungsiao Branch, Taipei,  
Da'an Dist.  
Sogo, Fuxin Branch, Taipei, Da'an  
Dist.  
Sogo, Hsinchu, E. Dist.  
Sogo, Kaohsiung Lingya Dist.  
Sogo, Taichung, W. Dist.  
Sogo, Taipei, Shilin Dist.  
Sogo, Taoyuan, Zhongli City  
Taimall, Taoyuan, Luzhu Dist.  
Talee, Kaohsiung, Cheiengin Dist.  
TS Dream Mall, Tainan, E. Dist.  
Uni-Ustyle, Kaohsiung, Qianzhen  
Dist.  
Uni-Ustyle, Taipei, Xinyi Dist.

**UNITED ARAB EMIRATES**SHOP-IN-SHOPS

Ace Hardware,UAE

Amazon.ae

Bloomingdales, Dubai

Crate & Barrel, Dubai

Galeries Lafayette, Dubai

Noon.com

Tavola, Abu Dhabi Mal

Tavola, City Centre Me'aisem

Tavola, City Centre Mirdif

Tavola, Debenhams The Galleria

Tavola, Golden Mile Galleria Mall

Tavola, Mall of The Emirates

Tavola, Meadows Town Centre

Tavola, Mercato Mall

Tavola, Spinneys Umm Suqeim

Centre

Tavola, Spring Souq

Virgin, Megastore UAE

Spinneys, UAE

Waitrose, UAE

**UNITED KINGDOM****PARTNERS**

[www.amazon.co.uk](http://www.amazon.co.uk)

**Online shop UK**

[www.bodum.com](http://www.bodum.com)

**UNITED STATES****Online shop USA**

[www.bodum.com](http://www.bodum.com)

Bodum Offices  
& Distributors

**ARGENTINA**

FASHION COOK S.A  
Uspallata 1670 (1282AEB)  
AR- Buenos Aires  
+54 11 43 04 14 14  
alan@fashioncook.com.ar

**AUSTRALIA**

BODUM (Australia) Pty Ltd  
Suite 39, 26-32 Pirrama Road  
Pyrmont NSW 2009  
Toll Free 1 800 961 871  
hello@bodum.com.au

**AUSTRIA**

C/O BODUM AG  
Kantonsstrasse 100  
Postfach 463  
CH-6234 Triengen  
+41 41 935 45 00  
hello@bodum.at

**BENELUX**

Belgium  
hello@bodum.be  
Netherlands  
hello@bodum.nl  
Luxembourg  
hello@bodum.lu

**CHILE**

AudioPlus Ltd  
Estoril 200 Office 435  
Las Condes,  
Santiago, 0201  
+56 2 2948 8404  
ac@audioplus.cl

**COLOMBIA**

Hot Trade SAS  
Km 2,3 Via Bogota Siberia  
Costado Sur Bodega 18  
Cota Cundinamarca, Colombia  
+57 310 323 73 10  
rodrigo@hottrade.com.co

**DENMARK**

BODUM (Skandinavien) A/S  
Humlebaek Strandvej 21  
DK-3050 Humlebaek  
+45 49 14 80 00  
hello@bodum.dk

**FRANCE**

BODUM France SAS  
144, Avenue Charles de Gaulle  
F-92200 Neuilly-sur-Seine  
+33 (0) 821 230 060  
hello@bodum.fr

**GERMANY**

Peter BODUM GmbH  
Niedenu 13-19  
DE-60325 Frankfurt am Main  
+49 (0) 69 979 48700  
hello@bodum.de

**INDONESIA**

Multifortuna Sinardelta  
Sudirman Plaza,  
Plaza Marein, 8th floor,  
Jl. Jend. Sudirman Kav. 76-78  
12910 Jakarta, Indonesia  
+62 21 5793 7007  
fredy@multifortuna.com

**ISRAEL**

ROSOLING 20-20  
1 David Raziol st.  
Rishon Lezion  
+972 3 518 8871  
info@rosoling.co.il

**ITALY**

hello@bodum.it

**JAPAN**

BODUM Japan Co. Ltd.  
3-25-12 Jingumae  
Shibuya-ku  
150-0001 Tokyo  
+81 3 5775 0681  
hello@bodum.co.jp

**LIECHTENSTEIN**

hello@bodum.li

**NEW ZEALAND**

C/O BODUM (Australia) Pty Ltd  
Suite 39, 26-32 Pirrama Road  
Pyrmont NSW 2009  
Toll Free: 0800 444 641  
hello@bodum.co.nz

**NORWAY**

+47 23 96 02 73  
Viderekopie til Danmark  
hello@bodum.dk

**PARAGUAY**

MERCI SA  
José Pappalardo 523  
Asunción  
+595 98 462 6709  
hola@merci.com.py

**PERU**

DARNA SAC  
Av. Javier Prado Este 5250  
OF. 202 Camacho, La Molina  
Lima, Peru 15000  
+51 1 336 4146  
info@darnaperu.com

**POLAND**

hello@bodum.pl

**PORTUGAL**

BODUM Portuguesa Produção SA  
Z.I. Tondela, Apartado 8  
PT-3460-909 Tondela  
+351 23 281 9900  
hello@bodum.pt

**BODUM Plástico SA**

Rua 7 - Lote A18  
Zona Industrial da Mota  
PT-3830-527 Gafanha da  
Encarnação, Ilhavo - Aveiro  
+351 234 243 790 / 234 243 791  
hello@bodum.pt

**BODUM Portuguesa SA**

Candal Park, JK-07  
Rua 28 Janeiro, nº 350  
4400-335 Vila Nova de Gaia  
hello@bodum.pt

**SINGAPORE**

BODUM Singapore Pte. Ltd.  
541 Orchard Road  
#19-01 Liat Towers  
Singapore 238881  
+65 6 970 7886  
hello@bodum.sg

**SPAIN**

hello@bodum.es

**SWEDEN**

+46 8 446 81 478  
Kopplas vidara til Danmark  
hello@bodum.dk

**SWITZERLAND**

BODUM AG  
Kantonsstrasse 100  
Postfach 463  
CH-6234 Triengen  
+41 41 935 45 00  
hello@bodum.ch

**PHILIPPINES**

Garden Barn Inc.  
2496 Taft Avenue, Pasay City  
+63 2 8833 1080  
mktg@gardenbarnhoreca.com

**SOUTH AFRICA**

AL & CD Ashley (Pty) Ltd.  
3rd Floor - Grove Exchange  
9 Grove Avenue, Claremont  
Cape Town, South Africa 7708  
+27 21 674 0294  
distributor.southafrica@bodum.com

**SOUTH KOREA**

BODUM Korea  
747 Tower Room #1201,  
168, Gonghang-daero, Gangseo-gu  
Seoul, Korea 07807  
+82 70 5223 1126  
hello@bodum.kr

**TAIWAN**

K. E. & Kingstone Co. Ltd.  
6th Fl., No. 120, Sec. 2, Jianguo N.  
Rd.,  
Taipei, Taiwan  
+886 2 2502 7256 ext.1319  
tina@kenk.com.tw

**UAE / KUWAIT / QATAR / OMAN / SAUDI ARABIA / BAHRAIN**

4 Homes FZCO  
Gold and Diamond Park  
Office 133, Building 4  
Dubai, United Arab Emirates  
+971 4 380 7611  
4homes@4homes.ae

**UKRAINE**

MIRS Corporation  
Ukraine 65012  
Odesa, 37 Osipova str., office 551  
+380 482 30 5508  
contacts@mirs.com.ua

**UNITED KINGDOM**

BODUM (UK) Ltd  
Unit F, Halesfield 10,  
Telford,  
Shropshire, TF7 4QP  
+44 20 3318 7478  
hello@bodum.uk

**UAE / KUWAIT / QATAR / OMAN / SAUDI ARABIA / BAHRAIN**

4 Homes FZCO  
Gold and Diamond Park  
Office 133, Building 4  
Dubai, United Arab Emirates  
+971 4 380 7611  
4homes@4homes.ae  
https://www.4homes.ae/

**USA (CANADA, SOUTH AMERICA)**

BODUM USA Inc.  
45 E. 20th Street, 8th Floor  
New York, NY 10003  
+ 1 212 367 8844  
hello@bodumusa.com

**VIETNAM**

Khang Viet Investment and Trade  
Joint Stock Company  
No. 8, 29/40 Tram street, Long Bien  
ward,  
Long Bien district, Hanoi, Vietnam  
Ha.ntt@kvit.com.vn

