

# THE AYRSHIRE JOURNAL



Volume 119 - Spring 2019

# Great Day At The OFFICE



*Junior Champion*  
SANDYFORD TRICLO FABLE  
Owned with Brent Crothers & Alan Timbrell

*Reserve Junior Champion*  
SANDYFORD SUPREME CLOVER

*Hon. Mention*  
ALLSTAR TRICKY HONESTY  
Owned with Blaise & Evie Tomlinson



*Champion*  
SANDYFORD PRIME HEATHER  
Owned with Beth Granville

*Reserve Champion*  
SANDYFORD LUCKY FLORRIE

*Hon. Mention*  
SANDYFORD SUPREME FABLE 2

What an amazing day at UK Dairy Expo claiming all the top titles  
All, but one, sired by Sandyford Sires.  
Thank you to all who helped make UK Dairy Expo 2019 amazing!

*Sandyford*  
AYRSHIRES

**E T TOMLINSON & SON**

# Welcome..

2018/19 President Keith Davidson

As I write this spring welcome in late February with record temperatures it is a drastic contrast to last year when the council met with a skeleton attendance due to severely heavy snow falls as the country was hit by the 'Beast from the East'.

Since the last Journal Jane and I have attended dinner's by kind invitation of the Stafford and Cornwall Clubs and also attended the North West's 70th Anniversary Dinner. We enjoyed great hospitality at each evening and it was a lovely opportunity to catch up with members, despite having technical issues with the satnav in Manchester on our way to Stafford's dinner.



As well as the social events there was also Ulster Winter Fair and AgriScot, great industry events on either side of the water.

Many thanks must go out to the membership for the warm welcome and hospitality extended to Jane and I up and down the country whether at shows, dinners and AGM's.

With the young breeders gathering to come in April I look forward to returning to Cornwall to enjoy their company and the chance to see some excellent cows.

May I also take this opportunity to thank the council and staff for their backing and guidance throughout this past year as well as family and staff at home for allowing me the time to take up this wonderful opportunity – I'm indebted to the council for this experience.

The Dumfriesshire and District Club are putting together an excellent itinerary for a very interesting and enjoyable conference in May, we would love to see as many of you as can make it to Dumfries. We can but hope that we will have similar weather to what we are currently enjoying.

to the 2019 Spring edition of the  
Ayrshire Journal.

## Editorial

Office News.....	4-5
Breed Managers Report.....	8-9
Taking Note.....	13
Who says you can't teach an old dog new tricks.....	14
Jane's Blog.....	15
Photographic Awards 2018 Results.....	16-21
Feeding the soil and cows this summer.....	22-23
Management Feature - James Brown.....	27
Conference Sale Preview.....	29-33
Conference Farm Visits.....	34-37
Getting To Know Your Vice President.....	39
National Show Judge Profile.....	42
Winsome Family Feature.....	43
Cattle Services News.....	45
Ayrshire Success.....	47
Club News.....	48-52
Ayrshires Of Excellence.....	56-63

## Advertisers

Adams, RT & JI.....	11
Adamson, J & Son.....	33
Advanced Nutrition Ltd.....	6
Broadley J D & B F.....	7
Carrs Billington.....	24
Cattle Services (AYR) Ltd.....	BC
Cornwall Ayrshire Breeders Club.....	38
CIS.....	40
Davidson, L.....	31
Farm Wardrobe.....	44
Hall, A.....	26
Howie, M.....	38
Hunter, J & M.....	46
Lawrie A & S.....	28
Lindsay, D&M.....	12
Mattinson, FJ & M.....	41
McGarva, J.....	32
NMR.....	10
Suffern, J.....	21
Templeton, G & R.....	25
Tomlinson ET & Son.....	IFC
UK Dairy Day.....	42

Cover: Image Halmyre Urr Mayflower 240 by Jane Steel. Background by Richard Hodgson. Designed by Agri-Promotions Ltd.

## AYRSHIRE CATTLE SOCIETY

Advertising Rates For Members - Page £180, Half £110, Quarter £85 all plus VAT.

Closing date for the next journal - 31st July 2019

Patron: Her Majesty the Queen Hon. Presidents: Lord Plumb DL, Edward Evans and Jim Lawrie

President: Keith Davidson, Halmyre, Haugh of Urr, Castle Douglas, Kirkcudbrightshire DG7 3LB Tel: 01556 660326

Business Co-ordinator: Gilmour Lawrie Tel: 01292 478365 Breed Manager: Duncan Hunter Tel: 07771 826403

General Manager: Claire Kimm, Westburn House, McNee Road, Prestwick, Ayrshire KA9 2PB Tel: 01292 471292

Fax: 01292 474686 Email: society@ayrshirescs.org Web: www.ayrshirescs.org Charity No.: SC007015

The views and opinions expressed by contributors are not necessarily those of the Society which cannot be held responsible for the accuracy of the information contained in advertisements.

Visit our website by scanning this QR code.





## HQ CATCH-UP

General Manager Claire Kimm updates membership on the activities at Headquarters

I have certainly had a busy start to the year. Both the Society and Cattle Services accounts have to be prepared to coincide with the dates of the planned AGM's and quite a lot of time has been spent finalising the details. There has also been the annual young breeder's event and conference to plan for and administer bookings.

Council met on 27th & 28th February with the annual accounts being presented along with many other subjects, where discussion

was encouraged. On day two we held a workshop style session to generate ideas for young breeders in particular the hosting of an international youth tour and for suggestions on the running of the Open day in 2020. The role of a council member is important as you are representing your region and taking feedback to your clubs, as per the rules of the Society council representatives are reminded that they should be able to commit to three meetings per year. It is acceptable for a replacement to attend should you not be able to, please bear this in mind for future meetings.

### CLASSIFICATION INCREASE

Due to unprecedented increases across direct costs that NBDC are currently experiencing, their board of directors have reluctantly taken the decision to implement a price increase for the classification service they provide to our Society. We therefore have no option but to pass on these increases to our members.

The main service charges are set out below and will apply to work carried out from 1st February 2019.

### TYPE CLASSIFICATION SERVICE

Flat rate fee of £108.00 for visits of 1 - 15 animals.

For visits where 16 - 100 animals are inspected - £7.21 per animal

From 101st animal to 150th animal the headage fee will reduce to £3.61 per animal

From 151st animal upwards the headage fee reduces to £2.58 per animal

Single Bull inspected alongside females - £15.90

A Classification special visit (defined as a non-scheduled visit outside the regular cycle agreed for that herd) £210.00 (to include the first 20 inspections)

Special Bull visit £108.00

Cancellation charge of less than 3 days' notice will incur a charge of £108.00

All the prices listed above are subject to VAT at the standard rate.



### WE CAN NOW ACCEPT CARD PAYMENTS

Should you wish to pay for events or your invoices we can now accept card payments from all the major card issuers. Our preferred membership payment is direct debit, however the card option is available.

### MEMBERSHIP

A recent outstanding invoice clean up has seen quite a reduction in the membership numbers, however these are now more accurate for active members and on a positive note they are constantly increasing.

### ANNUAL CONFERENCE

Please remember to let the office know if you wish to join us for any part of the conference, numbers are required for catering purposes for farm visits and additional evening dinners. Everyone is welcome.

If you have any queries we can help with please do not hesitate to give myself or Lesley a call at the office.

## MEMBERSHIP

Adult Members	606
Junior	299
Total	905

## Welcome New Members

### NEW MEMBERS

Alan Kennedy, Largievrechtan Farm, Isle of Bute, PA20 0QG

R W Vernon & Partners, The Parklands, Nantwich, Cheshire, CW5 7PJ

### JUNIOR

Charles Roberts, Trye Farm, Newmill, Penzance, TR20 8UX

Cameron McGregor, Parkmill Farm, Tarbolton, Ayrshire, KA5 5TH

Evelyn Coombe, Trevider Farm, St Buryan, Penzance, TR19 6BP

Joshua Lomas, Mosley Hall Farm, Eccles Rd, Derbyshire, SK23 7EW

Adam Smith, 4 South Park, Jacobstow, Cornwall, EX23 0BW

Connor Lamb, 14 St Helens Gate, Whitley Chapel, Hexham, NE47 0JJ

# Diary Dates

## May

11th	Ayr Show
13th- 16th	Annual Conference, Dumfries
15th - 18th	Balmoral Show
16th – 18th	Devon County Show
25th	Heathfield & District Show
25th	Shropshire County Show
27th	Surrey County Show
29th – 30th	Staffordshire County Show
29th – 30th	Suffolk Show

## June

6th – 8th	Royal Cornwall Show
6th – 8th	South of England Show
15th	Ballymena Show
15th	Cumberland Show
18th – 19th	Cheshire County Show
20th – 23rd	Royal Highland Show
23rd	Derbyshire County Show
27th	Judging Seminar, Butteridge Farm, West Leigh, Tiverton, EX16 7EY
26th – 27th	Royal Norfolk Show

## July

5th – 7th	Kent County Show
9th – 11th	Great Yorkshire Show
15th	Stithians Show
20th	Camborne Show
22nd – 25th	Royal Welsh Show

## August

3rd	Dumfries Show
3rd	Oswestry & District Show
8th	Okehampton Show
13th – 14th	Anglesey County Show
13th – 15th	Pembrokeshire County Show

## September

11th	National Ayrshire Show
------	------------------------

## ALEXANDER THOMSON GRAY

It is with sadness that in January 2019 we learned of the death of Alexander Thomson Gray.

Thomson was born at Greenstrands Farm, Sandilands, Lanark on 21st June 1925. He moved a few miles along the road to Langside Farm in the late Nineteen Twenties.

He married Nellie Frame in 1951 and had two children Alex and Anne. He was chairman of Lesmahagow YFC in 1946/47 and became President in 1960 for ten years and then became a Patron of the club in 1975.

Lesmahagow Show Society was a great part of his life and the Show was held at Langside Farm for over 30 years, enabling them to walk their cows to the showfield, with often a dozen or more entries in the Ayrshire Cattle Section.

Thomson had many highlights showing Ayrshire Cattle, in 1961 winning the Progeny competition team of ten cows sired by Hillend Lord Lovat, in 1967 winning the Royal Highland Show with Langside Aster 6th and winning Agriscot in 2005 with Langside Princess.

In 1973/4 he became President of the Ayrshire Cattle Society, a great honour, and travelled to New Zealand, Finland and Canada to world conferences in his role as President. He judged many shows including the Royal Show at Stoneleigh and in his year as President was presented with the Burke trophy by the Duchess of Kent.

In 1983 a great friendship was formed with Mrs Griffith Davies when she bought Langside Bloomer 97th at a conference Sale in Crieff. He continued to support local shows and the Royal Highland Show with entries for many years and in 2011 he was presented with an award in recognition of his Outstanding Service to the Ayrshire Cattle Society.

He was also renowned for the growing of seed potatoes and his interest in Texel Sheep which started in mid seventies with the purchase of Texels from the 2nd importation of Texel Sheep to Scotland. In 1979 he became president of the Texel Sheep Society.

Meeting people at shows and sales was a great part of Thomson's life, it was at these events that Thomson excelled in mixing with like minded people and all breeds of stock.

He is survived by his wife Nellie and family Alex & Grace, Anne & Jim, his five grandchildren and eight great grandchildren.

Proud to sponsor The Ayrshire Cattle Society

## Have you heard of Advanced Nutrition?

**Advanced Nutrition improves cow health, performance and profitability.**

Working with family run herds across much of the UK, Advanced Nutrition is adding value and increasing margins on farm. From grazing herds to fully housed, we bring experience and enthusiasm along with high quality feeds.

**Get in touch today to improve your herd's performance.**



**Sean Kennedy**

**Ruminant Nutritionist**

07983 813521

sean@arn-ltd.com



015242 63139

[www.arn-ltd.com](http://www.arn-ltd.com)

[office@arn-ltd.com](mailto:office@arn-ltd.com)

# *Whitecroft Ayrshires*



**Offer for sale from**

***Whitecroft Nellie 38 EX94 (5E) 2\****

**3 Young ET Bulls, born July 2018**

**Whitecroft NATO, NAIROBI & NELLMAN PLI £158**

**Sire East Church Patrolman**



**J D & B F BROADLEY & SONS**

**Brundcliffe Farm, Hartington, Buxton, Derbyshire, SK17 0BA**

**John 01298 84382 / 07792 631351 Michael 01298 84964 / 07495 541199**

**Andrew 01298 687134 / 07855 642856 email [andrew@brundcliffe.eclipse.co.uk](mailto:andrew@brundcliffe.eclipse.co.uk)**

*All Enquiries Welcome*



## WHAT'S NEW FOR 2019

Ayrshire Breed Manager Duncan Hunter writes about forthcoming events and how genomics are moving forward.



Following a positive year for our breed in 2018, we can report the highest number of registrations for several years. New members and several catch ups have helped achieve this, and we have

commenced 2019 with two new herds registering Ayrshires which can only give us further encouragement. Registered breeding females currently in Great Britain and Ireland stands at over 33,100 and we should aim at recognising those unregistered herds to get a realistic figure of the Ayrshire breed in the UK.

### EVENTS

This year's AGM and conference takes place in Dumfries and it promises to be a great few days away for those attending. The annual sale includes three superbly bred females which are very worthy of an investment. Make sure you investigate the families behind these heifers to realise the potential they could bring.

We are delighted to be holding a judging seminar on Thursday 27th June 2019 at Butteridge Farm, West Leigh, Tiverton, EX16 7EY. Our thanks go to Robert and Anita Cornish who will be hosting the event, and can I ask you to register your attendance with the office at your earliest convenience.

**“40% Mammary,  
Legs & Feet 30%,  
Dairy Capacity 10%,  
Dairy Character 10%  
& Rump 10%”**

### GENOMICS

Female Genomic testing has had a positive start with 70 females being submitted in the first month. As a reminder if you have taken advantage of the free starter kit offer you must make your submissions, or you will be invoiced for the kits which have not been used. Technology is moving on very quickly and going forward, following a discussion at Council, we will test on a higher density 70k chip which will help our breed move forward. We will receive Haplotypes results and the facility to do parentage testing through genomics. This is available through Cogent/ST Genetics. You will also receive easier and more detailed results. From advice we have taken this will be the correct steps to create the most reliable information available. It is slightly more expensive but will be beneficial for the information you receive. Please keep an eye on the Genomics page in the breeder's section of the website for more information.

### CLASSIFICATION

An extra trait box is being added the classification scoring system making a 5-box scoring system. This will be for rump structure taking in thurl setting which is a requirement we have previously asked for. A couple of the other boxes have been renamed. They are as follows along with the weightings of the final score .... Mammary 40%, Legs and feet 30%, Dairy Capacity 10%,

Dairy Character 10%, Rump 10%.

Another linear score has also been added to the mammary linear which is udder tilt. I have arranged for an explanation of linear traits to be available for its own page on our website to help our breeders understand linear scoring better. This is being written now and will be available on our website soon.





## MEMBERS HANDBOOK

A requirement from the Zootechnical committee in Europe is a detailed membership handbook explaining the Society functions, rules and services. In 2012 we issued a handbook which is now out of date. I have spent some time updating and adding what is required for us to comply with EU law. Previously we had included members details, which we can no longer do due to GDPR rules. The handbook will be sent to all new members and is available if required by current members. Please contact the office if you wish to receive one electronically or as a hard copy.

## SHOW NEWS

Two of our major events, the National show held at UK Dairy day and the ABAB calf show have taken the lead this year in demanding that all animals attending these events will need to have been individually been tested negative for the BVD antigen at some point in the animal's life. All BVD and TB certificates will need to be received before the events. No animals will be allowed on the show grounds if these have not been received and verified.

## BREED HERITAGE

Several genomic tests have been done on young heifers on the Breed Heritage programme and we will be analysing the differences between these results and the animal's PTAs. I would hope that the committee will agree to sample more animals this year. The possibility of testing older bulls via semen which Cattle Services hold to add to our reference population is currently being investigated, and this will help the reference for female testing going forward and will be a funded project by a third party.

The hours needed to work on the programme have not been available due to workload this winter, but I will be making time shortly to get this back into action starting with a meeting of the committee. We will evaluate families we are currently working with and look to add more female lines to the programme. We always appreciate breeders' recommendations for new families to look at and ask that these suggestions keep coming forward.

Breed Heritage are delighted that Cattle Services are currently considering new young bulls who have been bred as a result of our programme and remind you that our work is predominantly building the female lines to the point of being bull mothers.

We continue to search for those outcross sires to use but are still careful to what bloodlines will suit our systems. I see this as a very important issue going forward and we will all need to be open minded enough to take some risk.

Breed Heritage Chairman Alan Timbrell comes to the end of his 5 years in this position. Our thanks to Alan for his valuable input and dedication to this position over the years. We are currently putting thought into a replacement for him to lead us forward in this programme.

## FUTURE EVENTS

We are delighted to announce we will host an International Youth Tour in October of this year. Invites will be sent to each World Ayrshire Federation country inviting one member between 18 – 26 years old to come to the UK. We will visit breeders' farms through Northern Ireland, Scotland and England with opportunities of sight seeing on the way and the tour will end in Peterborough, at the All Breeds All Britain calf show where they can take part and meet up with our young members. On this note I will be asking for the loan of calves for the showmanship and calf show classes. Please let me know if you will be willing to take one extra calf to help facilitate this.

I can also confirm that we will again be holding a Breed Open day in June 2020 in Bolton, Greater Manchester. I must thank Ian and Janet Patrick for agreeing to host such an important event for the Society and Cattle Services. Whitegate Farm lends itself as a wonderful venue and we have the pleasure of a great herd to view and work with in order to make the day a success. Work will begin shortly to start making plans and arrangements.

Please feel free to contact me on any of the mentioned subjects or anything else to do with the breed or society by phone 07771 826403 or by email haresfoot7@hotmail.co.uk





# Know your cows Know your milk Know your business

Making small controlled changes to herd management, based on the highest quality information, is one of the best approaches to improving profitability.

Contact us today to discover the gains to be made from adopting cost-effective and efficient services from the NMR Group.

Total Herd Recording option available for registrations - demonstrating strong cooperation between NMR and the Ayrshire Cattle Society.



Manage  
bulk  
milk



Improve  
pregnancy  
rates



Breed more  
profitable  
cows



Increase  
herd  
longevity



Improve  
feed  
efficiency



Use  
less  
antibiotics

# BIGGINVALE

## *Organic Ayrshires*

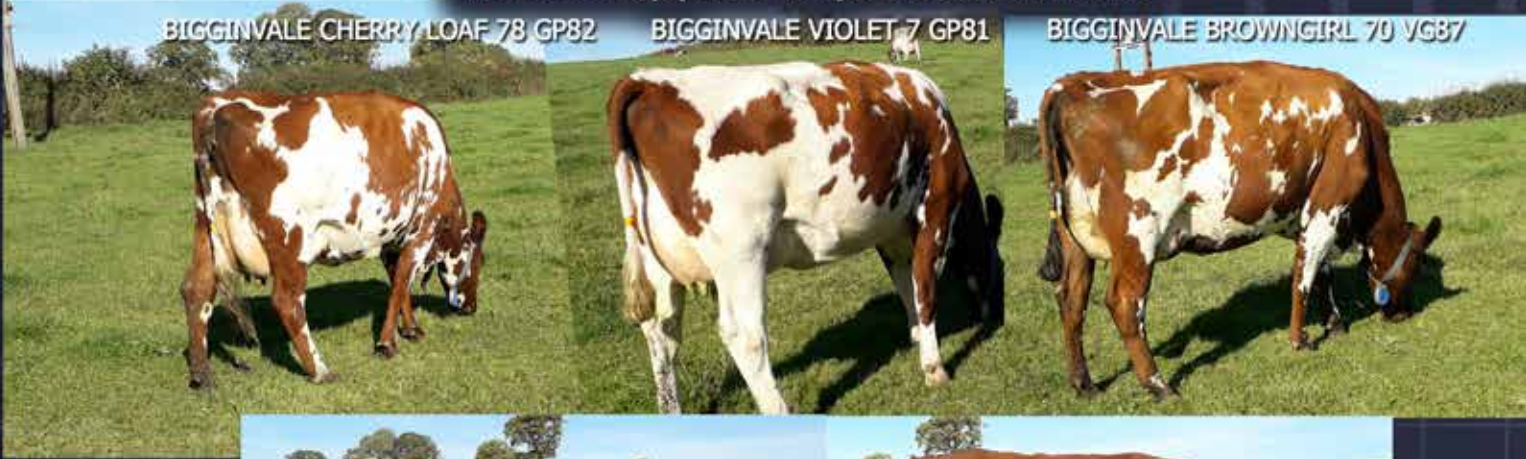
In-Calf Heifers For Sale Due June 2019

We love last years Devas Maverick daughters and there is plenty more in the pipeline for you to choose from!

BIGGINVALE CHERRY LOAF 78 GP82

BIGGINVALE VIOLET 7 GP81

BIGGINVALE BROWNGIRL 70 VG87

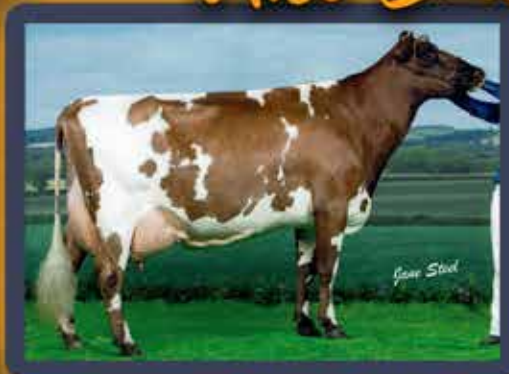


BIGGINVALE EASTER 62 GP80



BIGGINVALE MARVELLOUS 23 VG85

## *Also Bulls For Sale*



BIGGINVALE SARGENT MAJOR  
A DEVAS MAVERICK SON OUT OF  
BIGGINVALE CHERRY SHINE 130 EX91  
(Sired by Dudleywood Major)



BIGGINVALE COLLABORATOR  
A HUNNINGTON MANDELLA SON OUT OF  
BIGGINVALE CHERRYLEAF 61 VG86  
4. 8918 305 294 288 3.29%F 3.23%P  
LTY: 57,371KGS  
SIRED BY EAST CHURCH AMBITION

RT & JI Adams, Shirley Old Park, Rodsley, Ashbourne, Derby  
Tel: 07542 030370 | Jo: 07855 814291 Email: shirleyoldpark@btconnect.com

*Visitors Always Welcome!*

# HARPERFIELD AYRSHIRES

*"Facts are chiefs that Winna Ding"*

## **WILLOWFIELDS WINNIE 2ND EX92**

By West Mossgiel Modern Reality  
Winner 2018 All Britain and Ireland  
Photographic Competition 4 year old class  
Winner 2018 All Britain and Ireland Photographic  
Competition Amateur class taken by Linda Batty  
Winner of 4 classes over the years  
Royal Highland and Great Yorkshire champion 2018  
*Jointly owned with Howard and Linda Batty*

## **HARPERFIELD PEACH 50TH EX91**

By Harperfield Coral Reef EX93  
Honourable Mention 2018 All Britain and Ireland  
Photographic Competition 5 year old class

## **HARPERFIELD SANDY ROSE VG88 (2YR)**

By Harperfield Coral Reef EX93  
Honourable mention 2018 All Britain and Ireland  
Photographic Competition 4 year old class

**FIRM OF D M LINDSAY**

Harperfield Sandilands Lanark ML11 9TL

Tel: 01555 880612 Email: [metalbridgefarm@btconnect.com](mailto:metalbridgefarm@btconnect.com)

# Taking Note

In this edition of "Taking Note" we put a few questions to four of our members from the Yorkshire region in the North of England.



**James Waterhouse**  
Fourth Milestone  
60 Ayrshires & 300  
mainly New Zealand cross bred



**Sean Myers**  
Rosedale Ayrshires  
90 Ayrshires



**Ian Hutchinson**  
Tontine Ayrshires  
140 Ayrshires



**Richard Danforth**  
Moathouse Ayrshires  
Milks 155; 45 Ayrshires

## FAVOURITE COW FAMILY IN YOUR OWN HERD AND WHY?

**James** - It would be our Crissie family which was started by my Grandfather and have now reached up to Crissie 115. They are deep bodied, fertile with well attached udders. There have also been several show cows from this family.

**Sean** - Well if you ask our son John (age 6) it's Lotty, Steph says it's Sandy Rose and mine would be Alison. All these cow families are easy managed and have great temperaments.

**Ian** - Tiggy family. They breed consistently good deep bodied cows

**Richard** - I greatly admire the Kiss family for their type and production, being full of dairy character, longevity and functionality, which displays the true Ayrshire breed characteristics. They originate from Barr Kiss 5, currently EX94 6-star LP80 who I purchased from the Barr Dispersal Sale in 2009. She has since gone on to produce 86 tons of milk, produce three VG daughters (88, 86, 85) along with her latest calf by West Spittal leader, who will be our future herd sire.

## FAVOURITE COW FAMILY IN THE UK AND WHY?

**James** - The Hortense family bred at Bailiffscourt. They are fertile with a high heifer ratio and are long lasting cows.

**Sean** - Sandy Rose because where ever they have gone, they have done so well.

**Ian** - The Ethel family at Ravenhill because of their longevity and good type. The number of cows in this family speaks volumes

**Richard** - My stand out families are the Ray Family from Cuthill Towers, Ethel from Ravenhill and Fragy from Hunnington.

## NAME THE THREE MAIN TRAITS MOST IMPORTANT TO YOU.

**James** - Fertility, butterfats and protein, feet and legs

**Sean** - Longevity, ease of management and temperament.

**Ian** - Yield, longevity and type

**Richard** - Legs and feet, Type and Production

## SIRE WHICH HAS HAD THE BIGGEST INFLUENCE WITHIN YOUR HERD

**James** - Twemlow Admiral Glen for transmitting great feet and legs into our cows. Hilltown Oblique is now being used to improve fertility and grazing ability.

**Sean** - Wife says Heddon Mountain Pride, most recently

Rosedale Sandbarr daughters are ticking all the boxes.

**Ian** - Our homebred Tontine Tigman (Tontine Magic Tiggy EX92 4E x Stamford Famous Grouse). We have 41 of his daughters, 12 which are EX and 19 which are VG.

**Richard** - Haresfoot Simply Perfek as they are like peas in a pod, strong framed, deep bodied cows that look well and milk for fun!

## CURRENT SIRES IN USE IN YOUR HERD

**James** - New Zealand sires Pa Hill SPB Nathan and Brookview Casanova and from the UK Hilltown Oblique, West Mossgiel Modern Reality, Bigginvale Destination, Ardmore Crown Napier and Troutbeck Skyfall.

**Sean** - Whitecroft Dr Foster, Pam Ayr's Horizon and Lyner Oblique Focus.

**Ian** - Hunnington Famous, Horseclose Einstein, De La Plaine Blink, Rosedale Mr Magic, Trevaskis Matchmaker, Tontine Blique Heath (by Hilltown Oblique) Tontine Astorwell (by Gunnarstorp)

**Richard** - De La Plaine Vicking, Sandyford Supreme, West Spittal Leader, Sandersons George, Middle Emjest and Whitecroft Dr Foster.

## CARRY ON WITH THIS SENTENCE "AYRSHIRES HAVE GIVEN ME .....

**James** - Ayrshires have given me great pleasure in breeding cow families that have shown they can thrive in the grass based grazing system and block calving that we have now adopted. Through the young breeders, showing and the Ayrshire Conference it has given me the opportunity to meet new people, develop some great friendships and see different parts of the country and hopefully travel further in the future.

**Sean** - Ayrshires have given me the ability to carry on milking on a marginal hill farm.

**Ian** - Ayrshires have given me great pleasure! They fit our organic system, they look great, they earn us a good living and they are inquisitive and good to work with.

**Richard** - Ayrshires have given me the greatest pleasure because their traits have given me many advantages in my herd such as longevity, functionality and type, along with impressive milk and component yields.

# “WHO SAYS YOU CAN’T TEACH AN OLD COW NEW TRICKS?”

“Introducing Bradnop Diana 9 EX90 LP60”

**Vital Statistics:** D.O.B: 12th March 2004  
SIRE: MCCORNICK NELSON  
LACTATIONS: 12  
DAUGHTERS: 6  
GRAND DAUGHTERS: 8  
GREAT GRAND DAUGHTERS: 3

Born in the Staffordshire Moorlands, Bradnop Diana 9 started her milking career in September of 2006 in the abreast parlour at Holly Dale Farm. A year later the decision was made by the Needham family to take on the tenancy of an additional farm and so at the start of Diana’s second lactation she started milking in a herringbone parlour at Lower Foker Farm.

Ten years later the Needham family’s decision was to further invest and future proof their business, so the original family farm was sold, and they bought Crabtree Farm at Ipstones. This new farm still had its original abreast parlour and rather than go back in time, it was decided that “Out with the old” was the best option. Two Delaval VMS robots were ordered, but in the meantime the cows still had to be milked, so for seven months while all the works were carried out Diana 9 gracefully accepted the temporary milking bail that was quickly installed.

Finally, just before Christmas 2018, the day came that the cows would start milking through the robots. Ironically, Diana 9 was the first cow to be put on to the new computer system, in her honour of course, and although not the first cow to be milked by a robot she has still taken to it like the proverbial duck to water, totally unfazed by the smart gates, waiting areas and of course the robots.



Through four different systems, three farms and uniquely just one owner she is still going strong and heading into her 13th lactation, and in calf to Haresfoot Panache this time. Diana 9 and her legacy of offspring will help to ensure the future of the herd and the farm for many years to come.

MJ & D Needham & Son, Crabtree Farm, Ipstone, Stoke On Trent. ST10 2JS Tel: 01538 260065



## IT'S A TOPSY-TURVY WORLD SOMETIMES!



Hi, I'm Jane Barnes, married to Mark Barnes and, with our children Charlotte & Harry, we farm at Somerby in East Leicestershire. Our 180 cow 'Somerby' Ayrshire herd produces milk for Blue Stilton at Long Clawson Dairy. For the past 15 years or so I've also given talks to groups - "Tales from a Dairy Farmers' Wife" - which is all about my life on our family run farm, telling amusing stories and real life anecdotes.

our Christmas's had come at once! But I was wary and kept thinking winter hasn't done with us yet!

Now my attentions have turned to building the "Cow Classroom" which has kept me very busy since Christmas with a different set of builders, mostly lads I know from the village. I've been decorating the room myself as asking for help from Harry or Mark isn't an option whilst there's still so much to do on the farm. Although the cows have been extremely comfortable in their new living quarters, there's still a mountain of jobs for the builders still to do outside the sheds. The cows maybe inside but now we've got to get them out! Finding time to relay concrete sleepers and fencing both sides is the priority now. Also we're currently laying a new entrance drive of about 250 mtrs to improve the access for the milk tanker and any other lorries for that matter. And so the diggers are kept busy most days!

Our matriarch cow Honesty has sadly died and gone to cow heaven after 11 years on our farm. She went down just before calving to her 9th calf and didn't recover from the birth. Her heifer calf also didn't make it. However, last years' bull calf Desmond, was kept for breeding so her line will live on.

I'm still on the road a couple of times a week, travelling to venues giving my "Tales from a Dairy Farmers' Wife" talk to groups. I even went off down to Essex last week (2 hour drive each way) to "wow" a U3A group of 130 people. By the end of my session, they're all keen to make the journey back to Leicestershire to experience our Farm Tour. I've a dozen or so booked in for this summer so things are looking up but deadlines are creeping closer. My parents are involved by repairing and making good a second hand "people" trailer bought from the local Ag College, for our Tractor & Trailer rides we're planning to do for visitors. Its' going to look very

smart behind the JD tractor as we've painted it in JD colour scheme.

Our daughter Charlotte has had her first season working and hunting with The Thurlow in Suffolk, which has had to be cut short due to the Equine Flu outbreak in the horse world. She's now doing the trade stands at Equestrian shows and events throughout the UK and Ireland for the summer. Although she hunted my little Connie Norman all season, he's now come back home for me to "hack about & play with" for the summer - when I get a minute or two! He's turning into a little super star on the Hunting field, having hunted with four packs (Cottesmore, Quorn, Fernie & Thurlow) this season alone! She loves him for hunting as he can do anything. He's even had a go as a second Whip, lead a hound from horseback back to the pack, jump any number of hairy and scary ditches and he hasn't lost the art of opening and closing a gate too! We both love him to bits! But even though we've built a brand new farm, there's still nowhere to put a stable for Norman, so I've borrowed one next door to my house for a while - until I can plan my "space" for him!



Chaddesden WI in Derby



Weland U3A

In January, Harry and I travelled to Cork in Ireland to attend the "Positive Farmers Conference" where about 400 Irish & British dairy farmers gather for two days in a nice hotel, sharing information, real life stories and future planning about the grazing system! Amazingly, this conference was celebrating its 20th year! We even bumped into a friendly face, James Waterhouse. It was very interesting to note that the Irish dairy farmers didn't have a clue how to respond to the 'Veganary' campaign in which the Brits were subjected to during January. I guess the Irish public haven't heard of Vegans yet!

Harry's really involved in Oakham YFC and is currently the Club chairman. He takes his YFC very seriously ie: Holidays! He's already been away for a weeks' skiing with National YFC and he's just had a weekend in Cleethorpes in March, dressed in an Hawaiian shirt! (We don't ask any questions!)

It sure is a topsy-turvy world sometimes!

## UNDER 12 MONTHS



**Millford Maple Lark (Sandyford Maple Man)  
A Timbrell & M Tomlinson**



**Sandyford Supreme Clover  
(Sandyford Supreme) ET Tomlinson & Son**



**Sandyford Triclo Fable  
(Sandyford Triclo) Tomlinson, Timbrell & Crothers**

# All Britain & Ireland PHOTOGRAPHIC AWARDS

## 12 – 18 MONTHS



**Holmeswood High Bella  
(Calderglen Highland Hero) A Rimmer**



**2nd Halmyre Urr Floralin 218  
(Halmyre Urr Lieutenant) L Davidson & Son**



**3rd Denmans Prime Belle  
(De La Plaine Prime) J Sayer**



## 18 – 24 MONTHS



**Longwood Dreamer Marie 3  
(Nexus Dreamer) A Montgomerie**



**2nd Bruchag BBS Margorie  
(Bruchag Starman) J Mcalister**



**3rd Lyner Jumper Brandysnap 38  
(Lessard Jumper) C Walters**

# 2018 RESULTS

Kindly Sponsored by



## 2 YEARS IN MILK



**Allstar Provider Honesty  
(Richaven Provider) ET Tomlinson & Son, E Tomlinson, I Wilson**



**Sandyford Provider Fragrance  
(Richaven Provider) ET Tomlinson & Son**



**3rd Hilltower Supreme Marcy  
(Sandyford Supreme) A & S Lawrie**

## 3 YEARS IN MILK



**Winner Brieryside Respect Swan 2  
(Brieryside Respect) G Lawrie**



**2nd Sandyford Lucky Florrie  
(Sandyford Lucky Charm) ET Tomlinson & Son**



**3rd Cuthill Towers Harrys Miss Blondie  
(Cuthill Towers Harry P) A & S Lawrie**

All Britain & Ireland

# PHOTOGRAPHIC AWARDS

## 4 YEARS IN MILK



**Winner Willowfields Winnie 2  
(West Mossgiel Modern Reality) Firm of DM Lindsay & H & L Batty**



**2nd Swaites Bright Spark 5 (Brieryside  
Red Centurian) J Adamson**



**3rd Harperfield Sandy Rose  
(Harperfield Coral Reef) Firm of DM Lindsay**

## 5 YEARS IN MILK



**Winner Ardmore Janet 110**  
(De La Plaine Prime) J & M Hunter



**2nd Halmyre Urr Louise 283**  
(Palmyra Tri Star Burdette) L Davidson & Son



**3rd Bruchag Burdette Miss Ella**  
(Palmyre Tri Star Burdette) M Bryson

# 2018 RESULTS

Kindly Sponsored by



## 6 & 7 YEARS IN MILK



**Winner Ardmore Janet 110**  
(De La Plaine Prime) J & M Hunter



**2nd Gargus Jemima 3**  
(Palmyra Tri Star Reality) C Creeper



**3rd Harperfield Peach 50**  
(Harperfield Coral Reef) Firm of DM Lindsay

All Britain & Ireland

# PHOTOGRAPHIC AWARDS

## 8 YEARS & OVER IN MILK



**Winner Halmyre Urr Mayflower 240**  
(Halmyre Urr Pinsent) L Davidson & Son



**2nd Changue Martha 49**  
(Changue Stadium) M Bryson



**3rd Millford Lark 32**  
(McCornick Nelson) A Timbrell

## AMATEUR



**Winner Willowfields Winnie 2**  
(West Mossgiel Modern Reality) L Batty



**2nd Willhome Ristourn Mary 2**  
(Lagace Ristourn) S Williams



**3rd Sandyford Clover 10**  
(KC Roses Chatter Red) E Tomlinson

# 2018 RESULTS

Kindly Sponsored by



## RED AND WHITE COW



Winner Beeline Texas Swan 2 (Texas Red) S Bailey



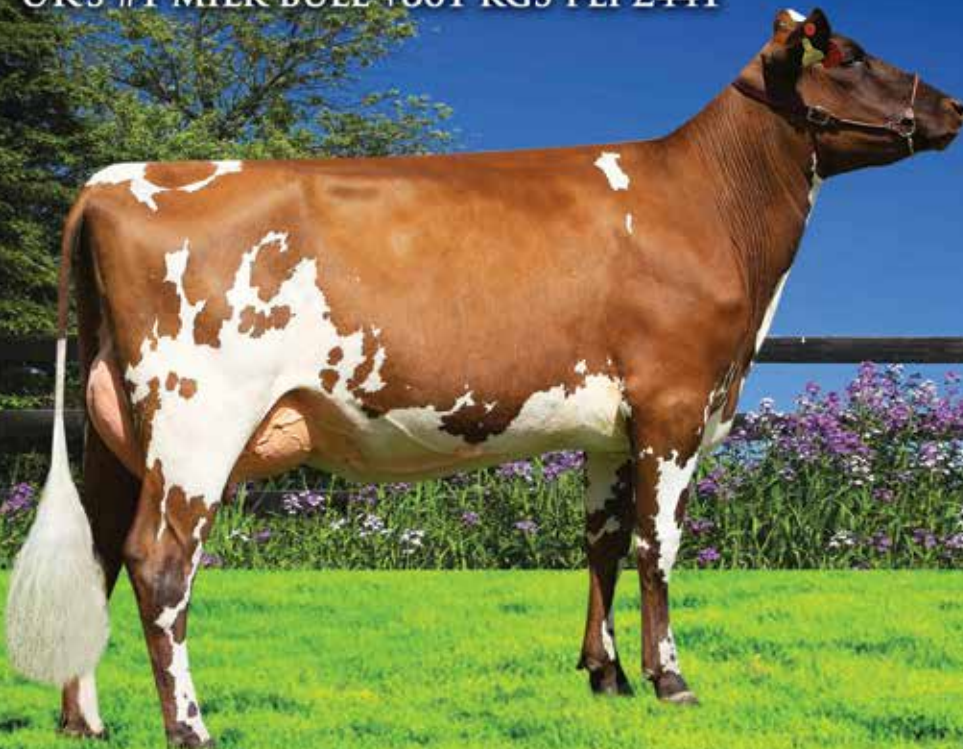
2nd Sandyford Clover 10  
(KC Roses Chatter Red) ET Tomlinson & Son



3rd Bruchag Talent Jewel Queen  
(West Mossgiel Class Talent) GG Baynes & Sons

# RAVENHILL STORMAN NORMAN

UK'S #1 MILK BULL +861 KGS PLI £441



SEMEN AVAILABLE  
THROUGH AI SERVICES  
CONTACT IVAN MINFORD  
07831 189852

*Visitors & Enquiries welcome*

**Ravenhill**  
AYRSHIRES

DAUGHTER  
OLD MILL BETSY 34  
OWNED BY G & A TAYLOR

JOHN SUFFERN  
Ravenhill, 10 Ardmore Road, Crumlin, Co Antrim, BT29 4QS  
Tel: 02894 452691 Mob: 07867 536032 Email: [suffern@btinternet.com](mailto:suffern@btinternet.com)

# FEEDING BOTH THE SOIL AND COWS THIS SUMMER

Carrs Billington Chief Technical Officer, Duncan Rose offers expert advice to breeders on how to get the most milk from grass this spring.



The type of cow and feeding system I come across seem to be getting more varied as each year passes, and the diversity of breeds and feeding systems I work with now can be quite bewildering. During the summer I could be rationing a fully

grass growth and wasting money.

2. Many soils are also low in Phosphate and Potash - so get your soils analysed now. The new Water Framework Directive means all cultivated or manured fields need to be soil tested every 5 years.

3. Don't forget Sulphur and Sodium. 80 % of UK grassland is suboptimal for Sulphur and 85 % is suboptimal for Sodium. Trial work at Bangor University for example, has shown the increased grass dry matter intakes and milk yield benefits of applying sodium as a grassland fertiliser over many years.

4. Soil compaction can reduce grass growth rates by between 10 and 20 % resulting from poor drainage and reduced nutrient uptake.

I deliberately started this article by looking at soil fertility and structure, as these issues can slowly build up over a number of years. This is particularly the case where herd size has grown, but not necessarily at the same rate as the area of land that the herd has to be managed on.

housed high yielding herd being fed one TMR diet in the morning, a fully housed herd being milked by robots at lunchtime, a more typical herd with access to both grazing and buffer feed in the afternoon and then a spring calving cross bred herd grazing grass and being limited to 2 kg cake per day.

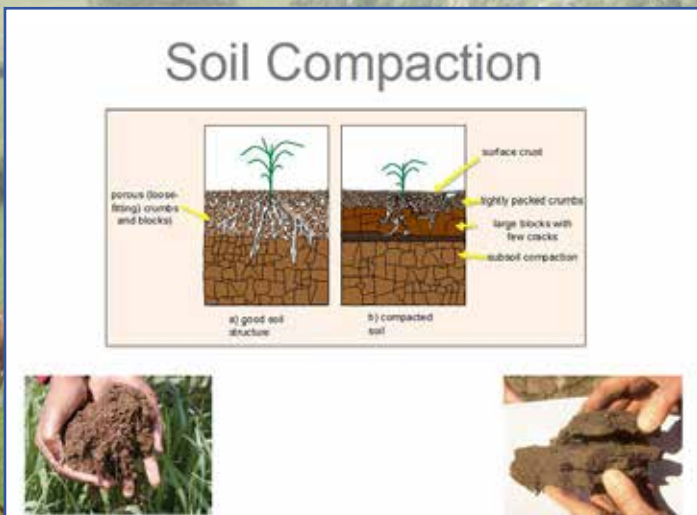
A key factor that links the profitability of all these different systems is growing plenty of high quality grass and to start this article I want to highlight some important points that are becoming limiting factors to increasing milk from forage on many farms.

1. Around 50 % of UK grassland has a soil pH below 6. At this level soil biological activity is reduced and grass plants cannot make full use of any fertiliser applied, thus limiting

## “soil compaction can reduce grass growth rates by between 10 to 20%.”

How can you get more milk from forage per cow if less forage is available?

I have learnt a lot from the specialist spring calvers that have the right breed / cross and infrastructure to maximise milk from grass. These specialist grazers plan and do get 14 kg of grass dry matter eaten per day by their cows during the grazing season, which assuming the cow to be 550 Kg will typically support maintenance and 18 to 20 litres of milk, depending on milk composition. This is only achieved where cows are turned out on to a fresh paddock every day, with a good grass cover of 3000 Kg DM per hectare, which is then grazed down to 1600 kg DM per hectare. This system does maximise the amount of milk from grass achieved per hectare, however grazing down this tight will limit individual cow performance unless extra supplementation is given.



Typically, these specialist spring calvers only supplement with 2 Kg cake and the specification of this type of cake will be very different to one fed at higher rates. My company has formulated a cake called Kiwi 14 Dairy Nuts, to be fed at these low rates and designed to complement high intakes of good grass that is typically very high in protein, low in fibre and low in minerals. Kiwi 14 is not just a concentrated mineral carrier but high in energy to balance the excess protein coming from grass

As the level of supplementary feeding increases, the specification of the cake has a progressively larger impact on the performance of the cow, not just in terms of yield and body condition, but also milk composition. Obviously at low cake feeding rates of say 2 Kg per day, you can have little impact on milk composition by changing energy or protein sources, but you certainly can at higher feed rates

The response to changing concentrate type should be looked at in relation to the typical composition of grazed grass, compared to the needs of the average high yielding cow:

- o Low Dry Matter
- o High crude protein with excess rumen degradable protein (ERDP)
- o Imbalance between ERDP and fermentable energy (FME)
- o No starch
- o High Sugar
- o Moderate to low NDF
- o Relatively high unsaturated oil
- o Low mineral and trace element

Fibre based concentrates tend to increase grass DMI and butterfat % compared to starch based concentrates, however starch-based concentrates tend to increase milk protein yield. The use of starch sources that are degraded more slowly such as maize, tends to mitigate the effect of depressing grass dry matter intake, but still stimulate milk protein yields. Feeding rumen protected saturated fats (C16) have been shown to increase milk fat %. This is in addition to the response from

fibre-based concentrates i.e. the response appears to be cumulative, however the extra cost must be weighed up against the value of the butterfat increase, which varies considerably from milk contract to milk contract. In terms of increasing butterfat % we have had some excellent responses to feeding rumen conditioners such as Actisaf live yeast and TechTonic. These are particularly valuable in cakes which are going to be fed at high levels in just two parlour feeds e.g. 4 kg per milking, where the risk of acidosis is higher.

Feeding extra crude protein as rumen degradable protein is a complete waste, as grazed grass provides more than enough effective rumen degradable protein (ERDP), with most of it being excreted as urine nitrogen, also wasting valuable energy in the process. Remember, dairy cows only convert one quarter of the protein they consume into milk protein, wasting a huge 75 % of it! High yielding cows grazing grass do still respond and produce more milk when the extra protein is fed as rumen by pass protein (DUP) however. The ideal concentrate would be one that is low in crude protein but high in DUP.

Compared to winter dairy cakes, the more specialist grazing cakes are also formulated to contain higher levels of magnesium, calcium and sodium in order to account for the lower overall concentrate feed rates and higher forage dry matter intakes in summer.

#### SUMMARY

The bottom line is that concentrate feeding of high yielding cows on pasture results in higher total intakes, which translate into higher milk production and improved body condition. Manipulating the composition of the milk is possible by changing the nutrient specification of the concentrate, as long as sufficient amounts are being fed, typically more than 4 kg per cow per day.

Choosing what level and type of concentrate to feed must be based on a detailed knowledge of the genotype, feed system, pasture quality and milk price on each farm. This is the basis of the advice and service that we and other feed manufacturers provide to our dairy farming customers.



# Maximise your **butterfat** at grass this spring and summer with **ButterMax**



Our **ButterMax** dairy feed has high energy and high DUP content to sustain peak yields and contains HDF, Actisaf and Butterfat Extra to protect your milk quality and milk price when cows are grazing spring grass. The inclusion of **Actisaf** live yeast:

- Improves fibre digestion
- Stabilises rumen pH and decreases rumen upsets at grass
- Improves dry matter intake
- Eases transition to spring grazing
- Supports strong milk yield and milk quality



**Actisaf**<sup>Sc 47</sup>®

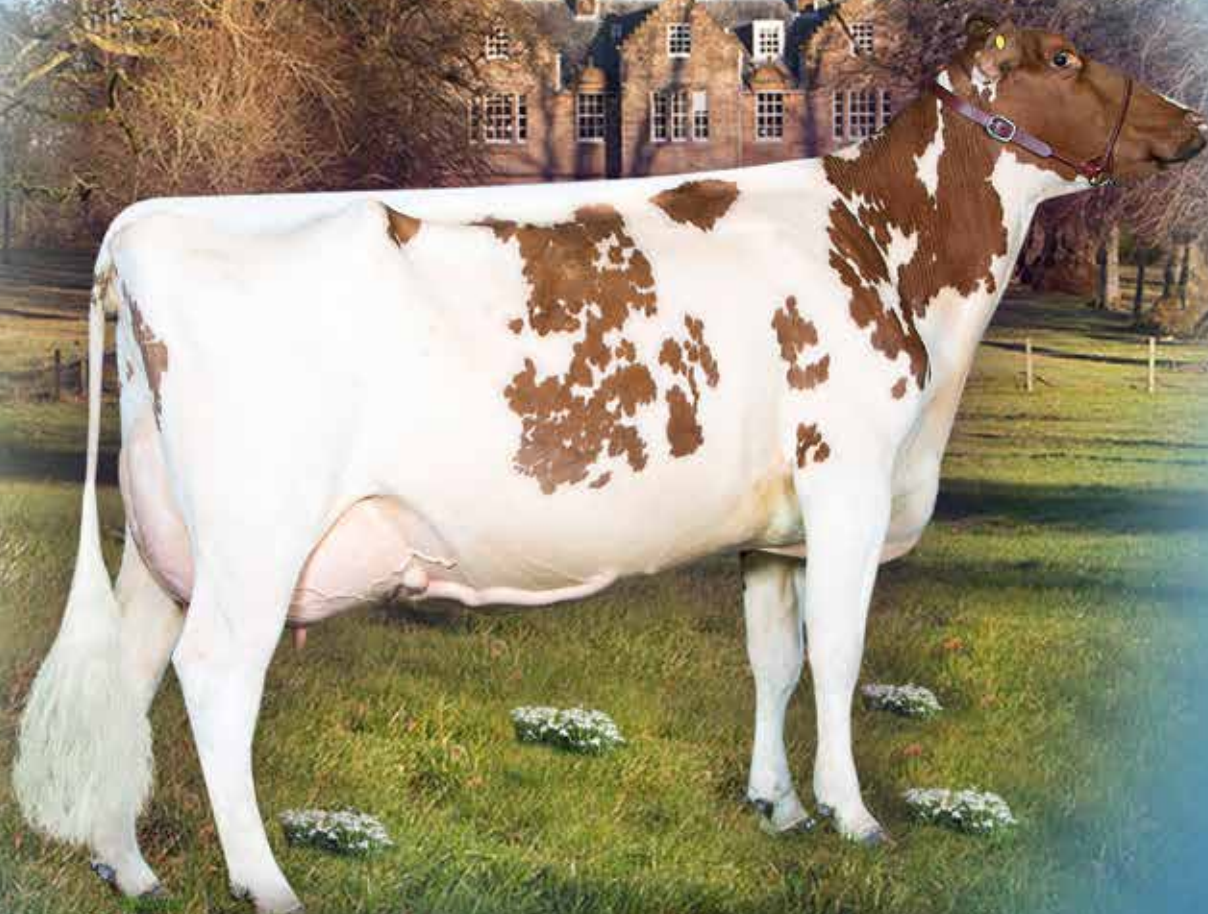
For more details call our customer services team:  
North England & Scotland 01228 518860  
South England & Wales 01785 760535

[www.carrs-billington.com](http://www.carrs-billington.com)



# CARNELL

*Ayrshires*



## **CARNELL SNOWDROP 368 VG85**

*Sired by Brieryside Thunder*

1. 7,400 Kgs, 4.42% Fat, 3.25% P Ave. CC 60

2. Projected 9,007 Kgs, 4.47% Fat, 3.12% P, Ave. CC 36

Ayrshire Champion & Champion of Champions Craigie Show 2018

Dam Carnell Snowdrop 308 EX91 (2)

Average 9,073 Kgs, 4.49% F, 3.51% P, 5 lactations in 305 days

Champion of Champions Craigie Show 2014

2nd Senior Cow Agriscot 2017

Grandam ~ Carnell Snowdrop 258 ET EX92 (3)

Average 9,864 Kgs, 4.27% Fat, 3.17% Ptn, 6 lactations in 305 days

*Heifers and young bulls for sale*

## **G&R TEMPLETON**

POCKNAVE FARM, HURLFORD, KILMARNOCK, AYRSHIRE KA1 5JT

JOHNNIE TEMPLETON ~ 07921 948237 ROBIN TEMPLETON ~ 07788 712324

[j.templeton@btconnect.com](mailto:j.templeton@btconnect.com)



# DUDLEY WOOD AYRSHIRES

Introducing our new herd sire CUTHILL TOWERS ROCKETMAN  
taking the next step forward on super Acton Farm Scotsman daughters.  
We eagerly await calves by Buster and Nectar



DUDLEY WOOD FARM, BENTLEY, ATHERSTONE,  
WARWICKSHIRE CV9 2JT  
GRAHAM HALL: 07779 211132 | ANDREW HALL 07946 641143



## AYRSHIRES THRIVE ON A GRASS-BASED SPRING CALVING SYSTEM

Cattle Services Director James Brown,  
Co. Down, Northern Ireland



Ayrshires thrive on a grass-based Spring calving system

Seaview Farm is run by Ayrshire breeders James and Pamela Brown and it is situated on the Ards Peninsula on the east coast of Northern Ireland. The farm consists of just over 200 acres which are partly owned and partly rented. The ground is medium loam with a heavy clay sub soil which lends itself well to

be an all grass system. It Supports 180 Ayrshires and Ayrshire cross bred cows with 100 followers, along with some beef cattle. All the Winter forage is made on the farm.

The dairy herd is mostly Spring calving. However, thirty cows calve in an Autumn block from 1st November through until the 10th December. The policy is to make sure that there are no calving's over Christmas and the new year period. 150 spring calvers will commence calving down from around the 10th of January with the aim to have all animals calved by the end of march. The Calving Index for the whole herd is an impressive 374 days and carries a replacement Rate of 20% for the past 12 months which has been worked out from United Milk records. The first Pregnancy diagnoses completed by the vets on 170 animals showed an 87% pregnancy rate to be calved by the end of march, with an empty rate of a mere 4% for the second year running.

Currently the herd average yield is 6200 litres with 480 kgs of milk solids. The target is to raise this figure to over 500kgs of milk solids. Concentrate feeding has averaged around 1 tonne per cow over the past five years. 13,000 litres of milk are sold per hectare over the total area farmed. The feeding system is kept simple where grass silage is passage fed in blocks, with concentrates fed in the parlour. Autumn calvers will be fed to a maximum of 9 kgs per day whilst the spring calvers start at 4.5kgs building up to maximum of 7 kgs per day, again dependant on yield.

Dry cows must be able to put on condition if needed on silage only and this can be achieved with Ayrshire genetics easily. It also makes the farm policy easy to sustain with at least 100 cows dry over the Christmas and New Year period, which results in an easier winter when there are less cows to milk, giving everyone an easier time. Summer months sees most of the herds production when they are out grazing.

James has found Ayrshires to have an aggressive grazing ability and can easily hold a mature target weight in mid lactation of around 550 kgs. Spring turn out is always at the earliest opportunity. This year due to the great conditions, they were turned out on the 14th February for 2 to 3 hours a day into the driest paddocks. This date varies each year. Swaths are also measured on a weekly basis using the Agrinet grass program throughout the spring and summer.

To help to achieve these results and maximise the potential of the system at Seaview Farm, much emphasis is in the breeding of the herd. The type of cow is critical to the success of the system, and the Ayrshire is so ideally suited as they have proved over several generations to be hard working, long lasting and trouble-free cows.

Medium sized cows are what are required by James which don't need to be buffer fed in the summer. Cows are expected to walk long distances to graze, so legs and feet traits are very important. Emphasis on milk quality is a big part of the breeding policy by using positive milk and high component sires on the highest milk quality cows. Belgian blue and Aberdeen Angus beef semen is used on those few repeating cows and on the lower end of the herd. Heifers are aimed to calve in at around two years old. James is a big supporter of Cattle Services Ayr Ltd and has used predominantly UK sires from their stud. Heifers entering

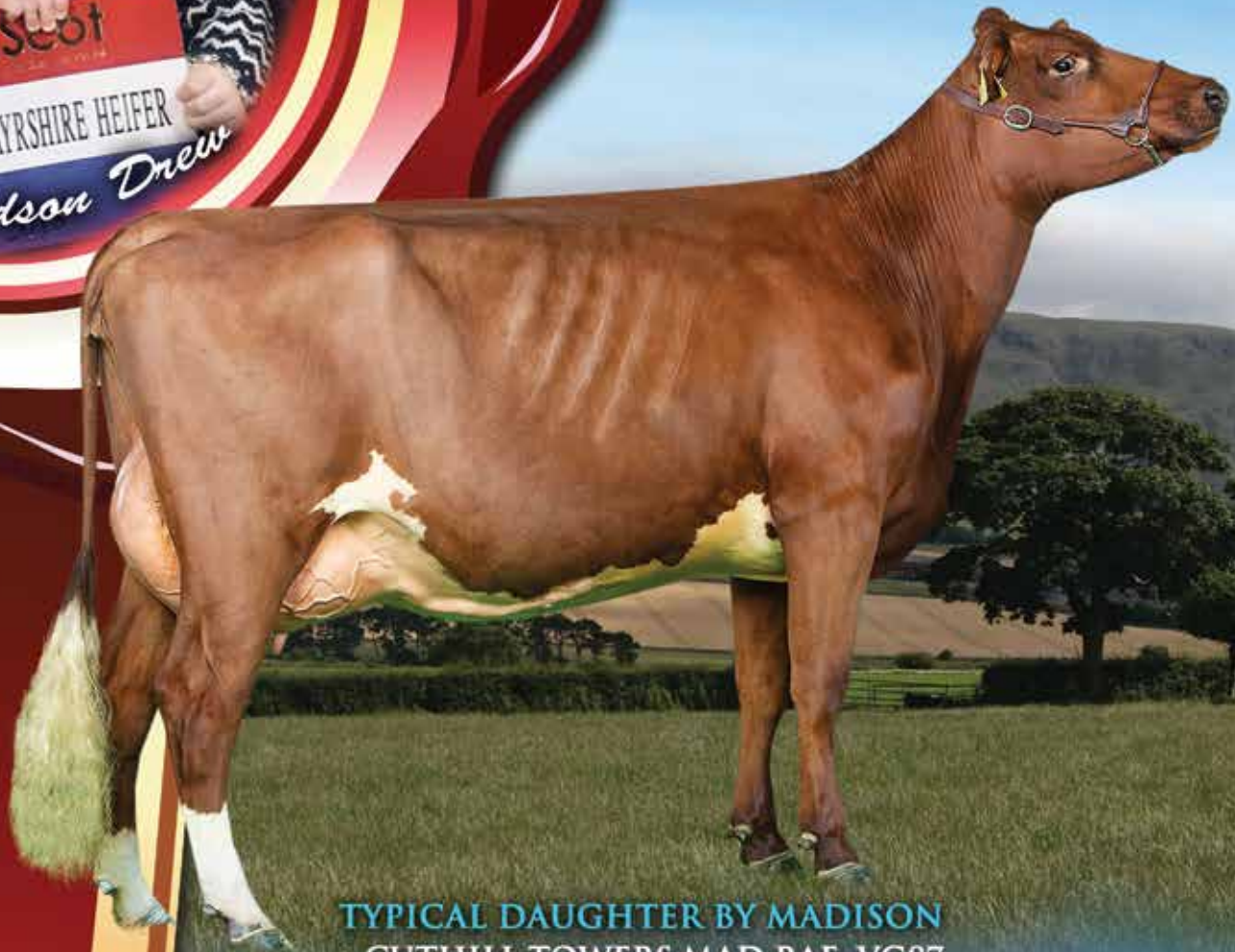
the herd this year are sired by Hilltown Oblique and Gwynnog Primetime, both sires being from consistent top cow families with emphasis on the traits required at Seaview. The calves born during this season are sired by Brieryside Magic, Troutbeck Skyfall, Gwynnog Primetime and Rosehill Manderville. Some impressive older cows in the herd and from the Cattle Services stud are by Haresfoot Panache and are now in their third lactation.

From the moment when Seaview Farm turned to the Ayrshire breed, the forage requirement has been dramatically reduced to the point where 20 acres less silage is required. Veterinary visits are less frequent and are now mostly preventive measures with better fertility and foot care which results in a lot less stress to both man and cow.

# “spring turnout 14th February”



AGRISCOT AYRSHIRE  
HEIFER CHAMPION  
2018



TYPICAL DAUGHTER BY MADISON  
CUTHILL TOWERS MAD RAE VG87

CUTHILL TOWERS MADISON EX90

DES CHAMOIS POKER X FAMILY-AF-AYR CORNELLIOUS DAISY

PURE AYRSHIRE MAGIC

MADISON IS 100% AYRSHIRE AND AN EXCELLENT OUTCROSS FOR:  
NELSON, BLACKTHORN, REALITY, OBLIQUE & BURDETTE BLOODLINES

SEMEN AVAILABLE FROM CATTLE SERVICES (AYR) LTD

HEIFERS ALWAYS FOR SALE  
ENQUIRIES WELCOME

CUTHILL TOWERS

Arthur, James & David Lawrie - 07798 821338 a.lawrie@btconnect.com



# CONFERENCE SALE

WEDNESDAY 15TH MAY 2019 EASTERBROOK HALL

We are delighted to bring you another great opportunity for the 2019 Conference sale. Four packages of semen are offered from sires who have had a huge impact in many UK herds. We also have three very special individuals which can be viewed before the sale during the Herd visits. Take a look to see what is on offer.

*Semen Packages*



## CUTHILL TOWERS AUTUMN GOLD EX X 7 STRAWS

(Clair Gre Vagabond VG x Kilrenny Autumn Beauty 5 EX) 100% Ayrshire  
Born in 1989, Cuthill Towers Autumn Gold has left a legacy of being one of the most popular Ayrshire sires in the UK. 1,459 progenies from Cuthill Towers Autumn Gold have been registered in the UK and he has provided our breed with some great cows. Many of you will have seen the positive influence this sire has had in many herds across the country and will recognise the 2 daughters in the photographs. Haresfoot Ella 47 EX94 3E 4 Star Brood cow and Willhome Gold Caroline EX94 1 Star Brood cow.

Daughters of Cuthill Towers Autumn Gold are tall, with deep bodies and open ribs, have great dairy bone and good legs and feet. They have great rear udders and good teat length and positioning.

**HARESFOOT ELLA 47**

Daughter of Cuthill Towers Autumn Gold

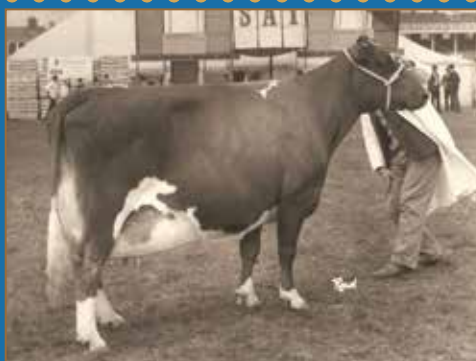


## Halmyre Urr Vice Consul x 10 Straws

(Pant Universe x Halmyre Urr Mayflower 40 EX) 100% Ayrshire  
We go back to 1975 which was the birth year for Halmyre Urr Vice Consul. This son of Pant Universe was known to improve daughter fertility and somatic cell counts along with being a positive improver of butterfat's and protein. His dam was Halmyre Urr Mayflower 40, classified Excellent and completed eight lactations in her lifetime with a top yield of over 8,000 kgs in 1978.

**HALMYRE URR MAYFLOWER 40**

Dam of Vice Consul



## Stewartry Royal Secret VG x 10 Straws

(Ickham Juror x Crofthead Crocus 21 EX) 100% Ayrshire  
His dam, Crofthead Crocus 21 was a cow who completed thirteen lactations producing a top yield of 10,101 kgs in 1977 after giving birth to Stewartry Royal Secret in that same year. He passes on a huge daughter fertility figure of 10.7 and he has been particularly influential in several breeder's herds.

**HALMYRE URR JINKS 22 EX**

Paternal sister to Stewartry Royal Secret



## BRIERYSIDE JUBILANT SCOT EX X 4 STRAWS

(Meadolake Jubilant x Brieryside Swan 28 EX 9 Star Brood Cow) 50% Ayrshire  
We have seen some great daughters all over the UK over the years. Daughters are very balanced throughout, full of dairy strength and have great rump structures. Udders are attached well with plenty of width and height in the rear udders.

**HUNNINGTON ROSEPETAL**

Daughter of Brieryside Jubilant Scot



### HALMYRE URR LOUISE 363

You all know of the consistency of the Louise family at Halmyre following many show appearances with much success over the years. The Davidson family are offering a chance to invest into this family with a July 2018 born member which goes back to the great Halmyre Urr Louise 175 EX94 3E. Three generations on and we have this fancy heifer sired by the home bred Halmyre Urr Rockstar, a Kamouraska Rockstar son out of Halmyre Urr Floralin 144 EX93 4E. Her Dam is Halmyre Urr Louise 313 VG85 and this calf has the potential to be the fourth generation VG/EX.

Consigned by Keith Davidson, Halmyre Farm, Haugh Of Urr, Castle Douglas. DG7 3LB. Tel: 07850 721 788/ 01556 6603262



Dam of Sire: Halmyre Urr Floralin 144 EX 93 4E  
Breed & Interbreed Champion at the Royal Highland Show & Dumfries Show 2012

### HORSECLOSE JOANNA 6 ET

Out of the Interbreed Dairy Champion of the 2016 Livestock event, the McGarva family are consigning Horseclose Joanna 6 ET to this year's conference sale. Her dam is of course Horseclose Joanna EX95 3E and she is sired by the top selling UK sire Hilltown Oblique. Joanna's production is as equally impressive as her looks with huge butterfat and protein percentages. She sells open and ready to breed however you wish.

Consigned by Jim McGarva, Horseclose Farm, Cummertrees, Annan, Dumfrireshire, DG12 5PZ. Tel: 01461 700201 / 07860 845264

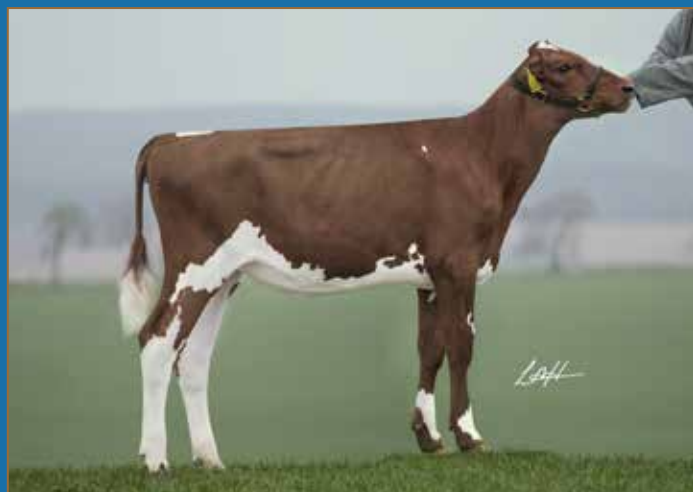


Dam Horseclose Joanna EX95 3E  
Livestock Event Interbreed Champion 2016

### SWAITES DILLY 12

The Adamson family are consigning this September 18 born daughter of Swaites Dilly 4 EX91 2E sired by Ravenhill Victory. The Dilly family have been featured in recent breed publications and they are clearly a family worthy of investment. This half-sister to the young sire Swaites Dermott is sure to carry on the stability of the strength traits her family before her clearly demonstrates.

Consigned by Swaites Farm, Pettinain, Lanark, ML11 8SR,  
Tel: 01899 308357 / 07889 647120



Swaites Dilly 12  
She Sells

Potential 4th Generation EX or VG Sells!

# HALMYRE URR LOUISE 363



IMAGE JANE STEEL

*Dam of Maternal Sire*  
**HALMYRE URR FLORALIN 144 EX**

*3rd Dam of Lot 1*  
**HALMYRE URR LOUISE 175 EX94 3E**

*Consigned by The Davidson Family*

**HALMYRE URR LOUISE 363** 0304137836

(UK582688702717)

Born: 18.07.18

PLI+£177 79.6875% Ayr

Sire: **HALMYRE URR ROCKSTAR** 0307191401

**Dam: Halmyre Urr Louise 313 0304128417 VG85(3YR).....by Palmyra Tri-Star Burdette**

1	02/00	5,694	4.12	3.49	298	2	02/11	6,912	4.48	3.34	305
3	04/02	5,173	4.16	3.42	213						

**GDam: Halmyre Urr Louise 206 0304113489 VG88.....by Brieryside Pure Gold**

1	02/07	6,416	4.57	3.32	305	2	03/08	7,733	3.75	3.24	295
3	04/08	5,591	4.20	3.18	288	4	05/08	6,203	4.40	3.30	295
5	06/08	6,088	4.20	3.18	268	6	07/07	7,465	4.19	3.17	304

**3d: Halmyre Urr Louise 175 0304104324 EX94-3.....by Badenheath Sir Lawrence 0307190247**

1	02/07	7,614	4.49	3.40	305	2	04/00	9,501	4.25	3.35	305
3	05/01	10,772	4.91	3.25	305	4	06/06	10,154	4.52	3.22	305
5	07/06	9,734	4.59	3.26	305						

*Daughter Of Interbreed Livestock Event Champion Sells!*

## HORSECLOSE JOANNA 6



IMAGE/JANE STEEL

*Dam of Lot 2*

**HORSECLOSE JOANNA EX95 3E**

*Consigned by The McGarva Family*

**HORSECLOSE JOANNA 6** ET 0304139045

(UK581594402017)

Born: 09.09.17

PLI+£320 62.5% Ayr

Sire: **HILLTOWN OBLIQUE** 0306181738

Dam: Horseclose Joanna 0304118049 EX95-3.....by Kian

1	03/00	6,884	4.53	3.48	305	2	03/11	5,001	4.89	3.71	305
3	04/11	7,625	5.25	3.48	305	4	06/04	9,049	4.98	3.47	305
5	07/09	10,200	4.57	3.26	305	6	10/05	6,335	5.08	3.33	166

GDam: Muirston Joanna 16 0304100946 VG89(7YR) LP60..... by Horizon Ranger Red Hol

1	02/11	6,949	5.35	3.72	305	2	04/03	8,638	5.17	3.74	305
3	05/10	8,431	5.05	3.78	305	4	06/11	7,621	5.43	3.89	305
5	07/11	6,934	4.73	3.70	305	6	09/03	8,491	5.31	3.70	305
7	10/10	5,171	5.43	3.27	223						

3d: Muirston Joanna 12 0301448640 .....by Halmyre Urr Telstar

1	02/07	5,721	4.26	3.32	305	2	03/08	6,414	4.04	3.36	297
3	04/09	7,494	4.02	3.38	305						



Potential 4th Generation From This Consistent Family Sells!

## SWAITES DILLY 12



IMAGE JANE STEEL

*Dam of Lot 3*

**SWAITES DILLY 4 EX91-2E**

*Lot 3*

**SWAITES DILLY 12**

*Consigned by The Adamson Family*

**SWAITES DILLY 12** 0301525173

(UK560616602763)

Born: 08.09.18

PLI+£239 100% Ayr

Sire: **RAVENHILL VICTORY** 0306182211

Dam: Swaites Dilly 4 0301506248 EX91-2(5YR) .....by Des Prairies Potter

1	02/08	6,871	4.53	3.18	277	2	03/07	9,544	4.72	3.21	305
3	04/07	9,534	4.25	3.29	286	4	05/07	10,418	4.25	3.25	283
5	06/07	6,167	4.57	3.32	152						

GDam: Swaites Dilly 2 0304115396 VG88(6YR) .....by Swaites Magnus

1	02/06	8,938	4.43	3.48	305	2	03/07	10,659	4.05	3.33	305
3	04/07	10,860	4.25	3.34	305	4	05/09	11,192	4.09	3.29	305
5	07/01	10,958	4.60	3.53	305						

3d: Swaites Danette 0304106697 EX94-4(10YR) LP80 1 STAR .....by Bankend Celebration

1	02/09	8,164	3.95	3.21	295	2	03/09	10,025	3.81	3.19	305
3	04/11	11,494	3.89	3.09	305	4	06/00	9,887	3.97	3.15	296
5	07/00	11,731	3.77	3.16	305	6	08/03	11,864	3.67	3.04	305
7	09/08	10,995	3.81	3.05	284	8	10/07	10,024	3.74	3.03	305



# Muirside

Farm is owned by The Cowhill Trust and is one of three dairy farms on the estate, alongside Bellfield and Ker-ricks.

The Muirside herd comprises 240 cows as well as 420 youngstock and fattening cattle and 680 Suffolk cross and Mule breeding sheep.

Muirside is run alongside Abbey Farm which in total covers 800 acres. Three cuts of silage are taken with up to 260 acres first cut, 230 second and 180 third. 110 acres of Sunningdale and Orwell winter barley and 66 acres of Skyscraper winter wheat are grown. In 2018 120 acres were reseeded with temporary leys.

The milking herd has a daily average of 32.5 litres, with an average lactation of 9700 litres at 4%bf and 3.45%p, with 43% of the herd in their first lactation. Breeding is focused on health, conformation and production with a particular focus on udder traits and foot angle.

Current herd sires are Arbour Red, Red Hot, Attico, Aladdin, Chairman, Apprentice and Jackpot for the cows and heifers are being bred to Spectre, Barrett, Eldridge, Kipling and Bromley through RMS. Since the herd was re-established after falling victim to FMD 2001 a Red and White influence has been used, whether Ayrshire or Holstein depending on the individual cow. The herd consists of eight Excellent, 32 Very Good and 71 Good Plus cows, with heifers calving between 24 and 26 months of age. Farm manager Stuart Neish is assisted by dairyman Colin Gray, tractor man Andy Graham and Laura Gray who rears calves part time. The sheep enterprise alongside the dairy is a relatively new enterprise and is made up of 300 New Zealand Suffolk crosses which start lambing on 6th March and 380 Mules which lamb from 4th April. The team at Muirside look forward to being the first farm to welcome delegates as part of the 2019 Ayrshire Breeders Conference.

# CONFERENCE

## Langbarns

at Kirkcudbright is the furthest West of the farm visits, Donald Armstrong runs 120 cows alongside 420 ewes on the 550 acre farm with his parents Robert and Alison.

The family have farmed at Langbarns since 1954, initially on a

tenancy and then purchased in the 80s the herd was pedigree until 1986 and has recently restarted registering. In the early 2000s the farm operated as a flying herd buying Ayrshires and Friesians, which has led to a

very mixed herd in terms of size and breed. Just before this, in the late 90s Dunlops Volcano was a prevalent sire in the herd.

Current service sires are Napier, Hijack, Hilltown Oblique, Manderville, Focus, High Definition and Admiral.

Donald recognises Stretton Triple Prime as a sire that has been influential in producing some uniformity and consistency in his daughters.

Donald prefers to use pure sires, but is happy to use bulls that are 87.5% Ayrshire. The most important families in the herd are the Tinto's and Beauty's.

As well as Ayrshire sires Donald used Aberdeen Angus and Hereford to sweep up and use on the bottom end of the herd, any heifers are sold as suckler replacements and males are fattened. He also fattens lambs, keeping replacements for the flock.



# Halmyre

Dumfriesshire District Club are looking forward to hosting the 2019 Ayrshire Breeders Conference in Dumfries and Galloway. It has been a few years now since the Club hosted a conference and it is somewhat smaller than it used to be, but the passionate members are arranging an interesting itinerary for you to view some fantastic cows, beautiful scenery and landscape and enjoy their hospitality. President Keith Davidson said: "The Club has been very supportive in organising this year's conference. I have received some first class hospitality all over the country over my past year as President and I look forward to returning that to delegates when they join us in 'Bonnie Galloway'!"

Keith, wife Jane and their brood Katie, Colin, Nicola and Isla, Kyla, Scott, Amelia and Charlie, are all looking forward to welcoming delegates to Halmyre. Keith, Jane and Colin run the Halmyre Urr herd near Castle Douglas. The herd currently comprises 160 milkers averaging 8222kg at 4.38%bf and 3.28%p. The herd is a blend of Ayrshire and Red and White, with most cows around 50% Ayrshire. Current service sires are Primetime, Hilltown Oblique, Sandyford Tricolo, Sire selection is based on stature, conformation, production and percentage, with hybrid stock bulls also used. Keith admires the versatility of the Ayrshire breed: "I have seen so many different farming practises on my travels and the Ayrshire fits them all, whether it be intensive, organic or grazing, pure herds or hybrid the breed adapts itself well." For Keith, the hybrid offers a very marketable animal which can match any other breed in the market place, with production and longevity, which is highly sought after by milk producers.

The family have enjoyed many successes in the showing over the years which rekindled at the All Britain All Breeds Calf Show in 2005 where Katie, Kyla and Colin took champion, reserve and honourable mention spots in the Ayrshire showmanship.

While Halmyre Urr Louise 175 started her showing career by winning champion Ayrshire calf. Louise went on to be successful as a cow, standing champion at Ayr, the Royal Highland Show and Dumfries Show in 2008 and classifying EX94-3E. She has also bred well with son Halmyre Urr Lieutenant and three milking daughters in the herd including Louise 254 EX91-2E, a Reality daughter who has shown successfully including reserve champion at the Royal Highland Show, the Haresfoot Elegant daughter Louise 277 EX90. Her first daughter Louise 206 VG88, a daughter of Brieryside Pure Gold is the granddam of Halmyre Urr Louise 313, a Halmyre Urr Rockstar daughter which is being offered for sale during the conference.

Showing success achieved two firsts for the Davidsons with Halmyre Urr Floralin 144 EX93-4E winning the interbreed title at the Royal Highland Show in 2012. And most recently Halmyre Urr Mayflower 240, winning National Ayrshire Champion at UK Dairy Day 2018, she is also our highest classified cow at EX96-4E.

Alongside the farm Jane also makes Glen Urr Ice Cream and Sorbet using milk and cream produced by the herd. The Toffee Shop in Castle Douglas is the main stockist, which was taken on in 2009 to give a regular outlet for the ice cream. You can look forward to enjoying sampling some at the conference!



# 2019



# Crofthead

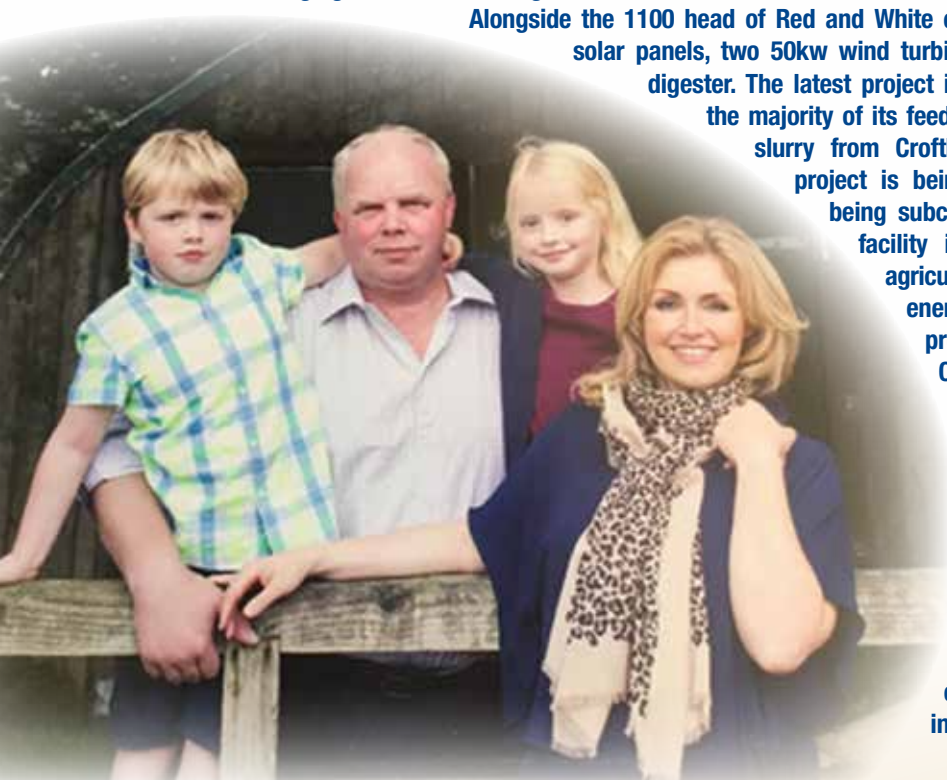
Mark and Anne Callander and their twins Will and Alex are now at the helm at Crofthead and are developing other enterprises alongside the herd. Mark is the fourth generation to farm at Crofthead and his parents Bill and Norma still play an active role in checking and feeding youngstock.

The farming enterprise now employs 18 full time staff and expands to 2000 acres of grassland over the main dairy unit at Crofthead, a satellite dairy and local heifer rearing units, totally 2600 head of cows and youngstock, with the herd averaging 9000 litres. Through Semex sires used in the herd include: Blink, Amazing and Clair Athenos.

Alongside the 1100 head of Red and White cows at Crofthead, the farm accommodates 50kw of solar panels, two 50kw wind turbines and 124kw of green energy from an anaerobic digester. The latest project is a biogas plant which uses agricultural wastes for the majority of its feedstock. This primarily includes farmyard manure and slurry from Crofthead and neighbouring farm Auchengibbert.

The project is being delivered by BioConstruct with 3B construction being subcontracted to carry out the projects civil works. The facility is capable of processing up to 60,000 tonnes of agricultural waste per year and generating 8MW of energy through the injection of gas to grid. The plant was pre-accredited for the new biomethane RHI tariff in October 2018, which is a part of the governments environmental programme to support renewable energy projects across the UK. The plant is managed by Biogas Power (Operations) Ltd, one of Scotland's leading providers of innovative solutions for on-farm and energy from waste AD facilities.

In 2015 milk from Crofthead was supplied to Appleby Creamery which led to Mark being part of the creation of Cows and Co cheese. Mark's Mum Norma now overseas taking the cheeses to local farmers markets in Dumfries and Galloway.



## CONFERENCE

# Caerlaverock

The Caerlaverock herd was established in 2001 by the Brown family following the loss of their Holstein herd to Foot and Mouth Disease. The family team is made up of Ian and Marion, with sons Steven and Stuart and their wives Liz and Judith, as well as Stuart's sons Owen and Nathan. Ian is now semi-retired, but still jumps on a tractor when required and is chief parlour washer. Stuart manages the day to day running of the milking herd and does the majority of the milking. While, Steven rears the calves and youngstock and takes care of tractor work. Their wives both work off farm full time, Liz is an Ophthalmology Nurse at the local hospital and Judith works in Quality Assurance for Gates Power Transmissions, both help out on the farm when possible. Stuart's sons are currently serving apprenticeships off farm, Owen as an Agricultural Mechanic with Lloyds and Nathan as a Mechanical Engineer with Cochranes Boilers.

The herd has expanded from 60 cows in 2005 to 130 since Steven and Stuart returned home to farm. Predominately the herd is Ayrshire with around 20% Red and White and another 20% Brown Swiss crosses and Holstein. When rebuilding the herd animals were sourced from Barr, Knockenjig, Stevensons, Kinniemonth and Raithburn. Canadian and British Ayrshires are used sexed on first service and conventional for second service, with subsequent services and poorer cows bred to British Blue. Some Red and White is also used on smaller cows.

Currently sires used on the herd include: sexed Rosehill Manderville, Des Coteaux Amazing, Marbrae Bigtime. While conventional straws of Des Fleurs Perfect, Kamouraska Decaf, Changue Stadium, Ravenhill Victory and Lyner Oblique Focus.

The family's highlight for the herd has been winning the Best Pure Ayrshire in the Dumfriesshire District Breeders Herd Competition two consecutive years with Horseclose Einstein daughter Caerlaverock Agnes. The herd average is 6300 litres at 4.6%bf and 3.4%p, with heifers calving between 28 and 32 months and the farm running over 320 acres.

Alongside the farm Steven also serves on the board of representatives for Arla and does work for Scottish National Heritage building footpaths, boardwalks, picnic benches, etc on the local nature reserve. Liz and Judith have small flocks of pedigree sheep, Liz running Hampshire Downs and Judith having Zwartbles.



# Mair's

Colin and Lorraine Mair farm in partnership at Townhead Farm, Mouswald, Dumfries with their 2 children Erin 20 and Robbie 18. The unit is owner occupied and consists of 375 acres.

Colin's family moved to Townhead in 1971 and in 2008 the time had come to further develop the business, Colin and Lorraine took the decision to build a new dairy unit for 250 pedigree dairy cows along with new slurry and silage storage to comply with statutory requirements. The land overlooks the Solway valley and is used for grazing and conserving with 200 acres cut in May and July and 140 acres in September. Approximately 40 acres of spring wheat is grown for whole crop and 25 acres of barley for home consumption.

Having lost the entire herd in 2001 to Foot and Mouth, Colin was keen to keep the Ayrshire tradition and took the decision to restock purchasing 45 Ayrshire heifers from Tom Barr's Hobsland herd and 85 Holstein cows from Jas Logan of Powis Hill. Cow numbers doubled in 2011 to 250 with 30% of the current herd still pedigree Ayrshires and the remaining pedigree Holsteins.

The herd is averaging 10,600kg at 4% bf and 3.26% p with a calving interval of 386 days. Calves are weaned at 65 days and calved at 25 months. Herd classification totals 17 Excellent, 72 Very Good and 47 Good Plus with a daily average of 37 litres. Current service sires include Hunnington Famous, Cuthill Towers Buster and Aladdin.

The herd has enjoyed success in the showing and Colin and Lorraine were awarded CO-OP Dairy Farmer of the Year in 2014.



# 2019

# Horseclose

The McGarva family at Horseclose run 130-cows and are the furthest East of the visits. Jimmy and Janet farm alongside sons James and Daniel and James' partner Patricia, with everyone involved in the day to day running of the farm. The Horseclose herd originates from Jimmy's parents Nether Abington herd which was established in 1954, before moving to Horseclose in 1992 and the herd prefix changing.

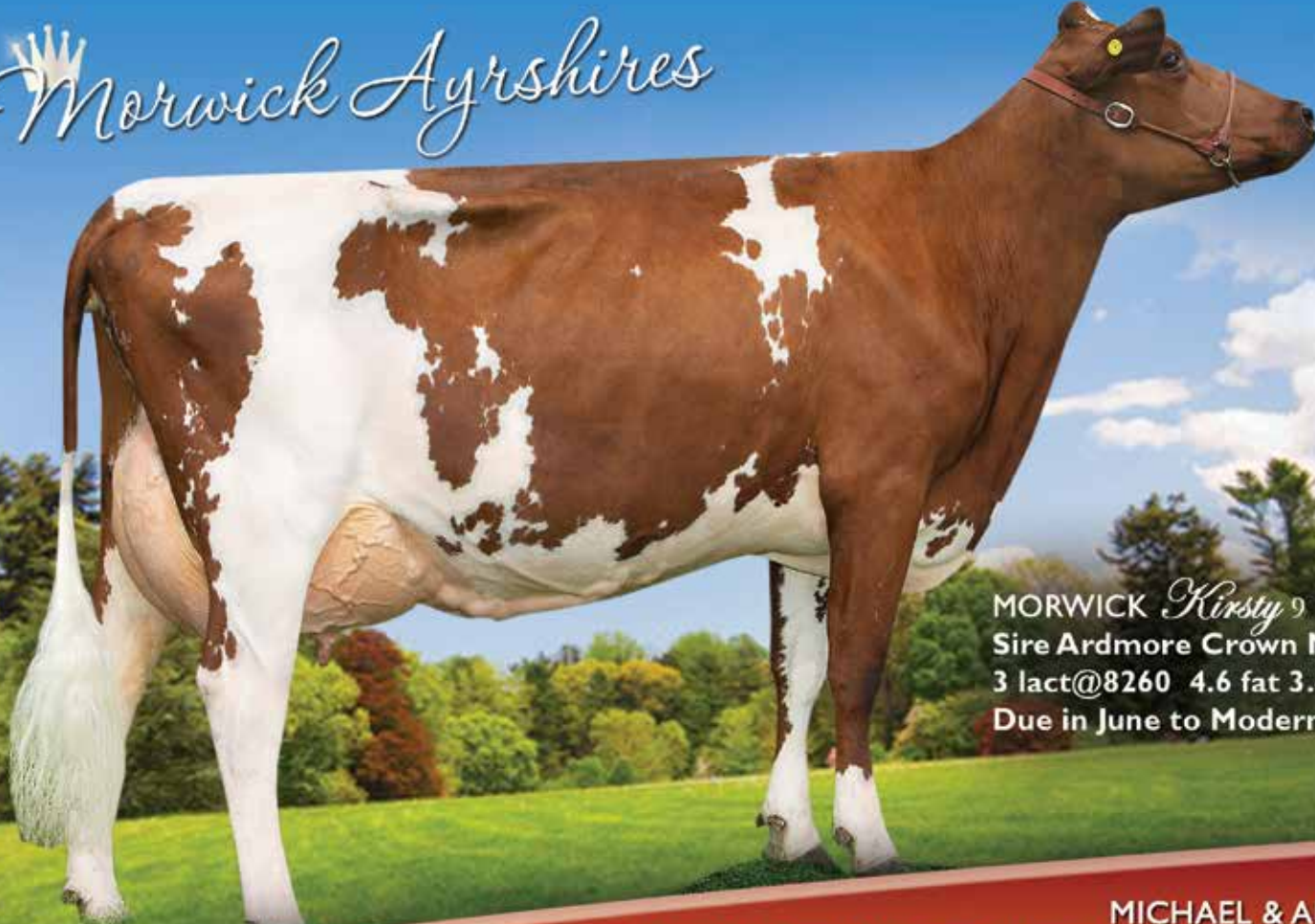
Pant Uprise was a prominent sire in the herd back in the early days, his progeny won the interbreed proven bull competition at the Dairy Show, with five daughters from the 50-head herd, which was quite a feat. The use of bulls such as Tryst and other hybrid bulls have increased the Holstein percentage in the herd. But the McGarva family aim to breed the herd back to being pure, mainly to improve butterfat and protein, as well as feet and legs. Current stock bulls are a grandson of the EX96 Jolly cow by Hilltown Oblique from Plaskett and a Stamford High Definition son from the Celandine family at Changue, which is an outcross sire.

The herd average 7000 litres at 4.7%bf and 3.4%p, fed on as little purchased feeding as possible and grazed as long as possible with no buffer feeding. Even during the summer the herd average is never below 4%.

Alongside the cows the family run 150 sheep over three pedigree flocks of Beltex, Zwartble and Border Leicesters. Most recent success for the herd has been with Horseclose Joanna EX95-3E, a Kian daughter, who won interbreed champion at the Livestock Event 2016 and at Dumfries Show the same year.



# Morwick Ayrshires



MORWICK *Kirsty*  
Sire Ardmore Crown Napier  
3 lact@8260 4.6 fat 3.46 prot  
Due in June to Modern Class

MICHAEL & ANGIE HOWE  
Morwick Farm, Acklington, Morpeth, Northumberland. NE65 9DQ  
Michael Mob: 07802 795993 Peter Mob: 07702 056377 Email: morwick@btopenworld.com

Cornwall Ayrshire Breeders Club would like to thank all Our Sponsors,  
in helping us host 2019 Ayrshire Young Breeders

**LODGE & THOMAS**  
ESTABLISHED 1895

Chartered Surveyors | Auctioneers | Valuers | Estate Agents  
58 Lemon Street, Truro, Cornwall TR1 2PY 01872 272732  
Truro Livestock Market & Truro Sale Room, New Quay Road, Truro TR1 1RH 01872 275611  
www.lodgeandthomas.co.uk info@lodgeandthomas.co.uk

**Penbode**  
Farm Vets Since 1840

**Intershape**

**for farmers**  
the total feed business

**ACLAND**  
PLANT HIRE

**UKSIRE**

**Cattle Services (Ayr) Limited**  
**AYRSHIRES**  
CATTLE SERVICES

**GRIGGS**  
Est. 1970

**NMR**  
Information Partnerships

**ROYAL CORNWALL**  
AGRICULTURAL ASSOCIATION

**HUTCHINSONS**  
Crop Production Specialists

**CMC**  
www.credonmilling.co.uk

**WYNNSTAY**

**cis**  
The Milk Recording Organisation



# GETTING TO KNOW YOUR *Vice-President*



With the conference fast approaching, a change of the officials is on the cards, so in this edition we are introducing you to the man stepping up to the Presidency role in May. A few simple questions have been asked to get to find out more about his family, farm, achievements along with some personal facts.

## NAME

Michael Allan Howie

## ABOUT YOUR FAMILY?

I am Married to Angie and we have 3 sons, Will, an Accounts Manager with a fruit firm, Peter, a partner at Morwick and Ben who is a final year student at Glasgow University studying Chemistry.

## EDUCATION

Acklington First School, Newlands Prep School and Holt School in Dunbar. I left at 16 and spent a year at home before going to Kirkley Agricultural College to do NCA and later did Farm Management.

## ABOUT YOUR FARM AND ITS LOCATION

Morwick is in mid-Northumberland three miles from the coast. It is a Duke of Northumberland tenanted farm. My Grandfather and Father came to Morwick in 1945 after leaving Eshott Brocks. Total acreage is 950 acres with 220 cows and 200 followers. 600 acres of arable, 300 acres of grass split 250 temporary and 100 permanent. Dairy cows consist of Ayrshires, Red Holsteins and blends of both totalling 185, Jersey cows total 15, black and white cows 25. The cows are TMR fed and loose housed in the winter. At turnout in mid-April they are strip grazed, hopefully for 6 months, day and night with TMR fed for an hour after both milking's. In 2003 an Ice Cream Parlour was opened on farm and this has proved very successful. Angie runs the ice cream business with help from Ben when he is at home and one full time employee along with seasonal part time staff.

## BREEDING POLICY AT MORWICK?

70% of the herd are bred to Dairy Semen and 30% of the herd to Belgium Blue. At present sexed semen is being used predominantly. Some of the Ayrshire families that were bred to Red Holsteins are now being bred back to Ayrshire and Ayrshire blends. The Red Holstein families from Canada and Germany are mainly bred to Red Holstein. Herd average stands at 8600 kg, 4.4% fat and 3.4% protein. Farm staff consists of 1 dairyman, 1 tractor man, 1 general farm worker, Pete, myself and my father David who is still turning out in his 90th year.

## TELL US ABOUT YOUR MOST PROLIFIC COW FAMILY AT MORWICK?

The most prolific cow family must be the Queen family, although the Brown Girls, Tulips, Ruth's, Sandra's and Fawns run quite close. Winning the interbreed at the Highland and the Royal in 2002 with Morwick Sand Queen was a very proud moment, especially as the Queen family came from many generations of Ayrshires bred at Morwick, Acklington Park, Hebron and even Eshott Brooks in the 1940s. I remember after Sand Queen won the Highland there was an objection from a well-known Holstein breeder complaining she wasn't a pure Holstein – someone else pointed out that the owner was not pure English!

## WHAT WAS THE NAME OF YOUR BEST BULL BRED AT MORWICK?

The Best bull must be Morwick Sand Ranger who transmitted type, high components and longevity which cannot be under estimated. Morwick Milestone was also a well thought of Ayrshire bull. He was one of many Morwick Ayrshire bulls sold throughout the UK.

## WHAT DO YOU LOOK FORWARD TO THE MOST IN BECOMING PRESIDENT?

Meeting old and new friends and visiting new areas throughout the UK. Also looking forward to visiting Australia next January for the World Federation Conference.

## IS THERE ANYTHING YOU WANT TO ACHIEVE AS PRESIDENT, IF SO WHAT?

To continue to encourage the positive movement in the Society, highlighted by the togetherness and team spirit shown by the younger generation. Also, to encourage new membership.

Who has been your biggest inspiration in your life and why?

My Father and Grandfather, who installed in me the importance of a good work ethic and gave me a free rein at an early age.

## THREE WORDS THAT YOUR CHILDREN WOULD USE TO DESCRIBE YOU AND WHY?

Generous (always good for a handout) Deaf (selective hearing and doesn't listen) Random (jumps from one topic to the next and expects you to know what he's thinking)

## FAVOURITE FOOD AND TIPPLE?

Fillet Steak rare, Whisky or Gin

## WORST HABIT?

The boys tell me it is carrying mothers Whippet around all the time.

## ANY TALENTS YOU MAY HAVE NO-ONE ELSE MAY KNOW OF?

It used to be drinking a pint in 4 seconds! Another is being in two places at the same time! This can only happen if you have an identical twin brother! If anyone wonders why I'm not talking to them or acknowledging them, you must be speaking to my twin brother Neil!

## IF YOU WERE GIVEN 3 WISHES WHAT WOULD THEY BE?

For Newcastle United to reward their loyal fans by winning the Premiership and the FA Cup.

For my friends and family to enjoy health and happiness.

To have the knowledge I have now when I was younger. Also a lottery win would come in handy!

## IF YOU WERE ABLE TO GO OUT FOR A PINT WITH ANY 3 PEOPLE IN THE WORLD WHO WOULD YOU CHOOSE AND WHY?

Any three from Lee Mack, David Mitchell, Phil Tuffnell, Matt Dawson and Freddie Flintoff, all of them would be good for a laugh.

## DREAM HOLIDAY DESTINATION?

Safari in South Africa

## FAVOURITE TV PROGRAMME?

Silent Witness

## FAVOURITE MUSIC?

George Ezra (a bit modern!) The Proclaimers - 5000 miles, the Kaiser Chiefs - I Predict a Riot

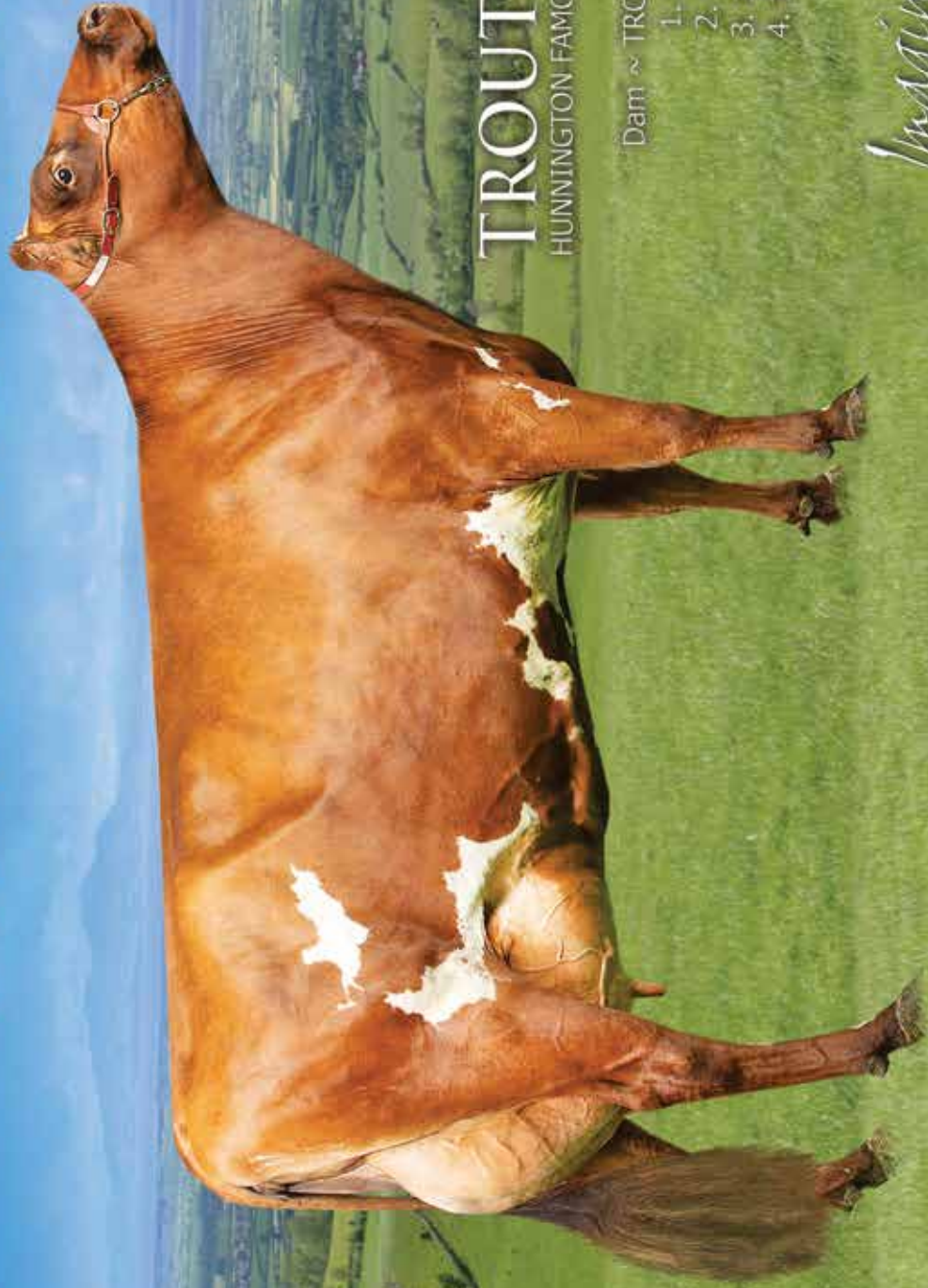
## WHAT SCARES YOU?

The wife, when her Whippet is in my possession and then goes AWOL.

## DESCRIBE YOUR PERFECT DAY?

Heifer calves being born and not bulls, sunshine and not rain, with a good party in the evening.

# POWER, PRODUCTION...PROGRESS



Semen is available from

## TROUTBECK PROGRESS

HUNNINGTON FAMOUS X EX94 (2) PALMYRA TRI-STAR BURDETTE

Dam ~ TROUTBECK BURDETTE JESS 3 EX94 (2E)

1. 8,273 kgs 304 4.30% 3.39%
2. 9,238 kgs 274 4.76% 3.27%
3. 10,900 kgs 305 5.13% 3.40%
4. 10,728 kgs 305 4.85% 3.31%

*Imagine the possibilities!*

F&M MATTINSON & SONS

ROSEWAIN FARM, WIGTON, CUMBRIA. TEL: 016973 49966

PHILIP: 07765 474983 | JAMES: 07900 112628





# Milk Recording

from less than 59p\*  
per cow per month



The Cattle Information Service (CIS) is a leading milk recording supplier providing data from milk samples to support dairy farmers to make informed decisions about the future of their herd from feeding to breeding.

- DIY or full milk recorder service offered monthly, 6 weekly, 8 weekly or quarterly and bespoke packages available
- Processed through ICAR and UKAS accredited laboratory
- Upgrade available to Pedigree Complete package for registrations, type classification and cow mating tools
- Full web based management system supported with free app

\*Based on 230 herd on 8 weekly DIY, factored, no paperwork. Terms apply.

## Accredited BVD Blood Testing



BVD TESTING

The CIS Laboratory tests individual cow blood for BVD virus using ELISA technology. Testing can also be done on ear notch tissue, individual and bulk milk samples.

Contact your CIS Area Manager for quotation or call **01923 695319**



Tests from  
**£4.30**  
each



Visit our  
website for a  
Quick Quote  
for your farm

[www.thecis.co.uk](http://www.thecis.co.uk) | [info@thecis.co.uk](mailto:info@thecis.co.uk)





The Ayrshire Cattle Society are delighted to announce that the National Ayrshire Show judge for 2019 will be Mr Gilmour Lawrie. The National Ayrshire show will take place at UK Dairy Day on Wednesday 11th September at the International centre in Telford.

Gilmour Lawrie is married to Caroline and farms in partnership with his brother Jim, milking 600 cows under the Brieryside prefix in South Ayrshire on two modern dairy units. Gilmour and Jim manage one unit at Monkton, near Prestwick and Gilmour's son Kevin manages the newest unit near Maybole. 1500 acres are farmed altogether with around 400 acres of cereals.

Brieryside Ayrshires are one of the longest established Ayrshire herds in the world with the first records of registered stock in 1876, making the Brieryside prefix world renowned!

So much success has come from generations of solid cow families and from generations of great stock men and women in the Lawrie family.

Show success over the years has been prolific through each generation of the Lawrie family. Gilmour's proudest and most memorable successes were winning the Interbreed Dairy Champion at the Royal Highland Show on two occasions, and then at Agriscot in 2012 when he won both the Super cow and Super heifer titles.



Gilmour has judged Ayrshires all over the United Kingdom over the years at both county and national level along with many Interbreed championships and competitions. The Great Yorkshire, Royal Welsh, Royal Balmoral and the All Breeds All Britain Calf Show are just a few to mention.

Gilmour held the prestigious position as President of the Ayrshire Cattle Society of Great Britain and Ireland in 2016 after spending several years on the Council of the organisation. Currently Gilmour is the Business Co-Ordinator for the Society.

Responding to the invitation to Judge at the National Ayrshire Show Gilmour has commented "I am very honoured, and I consider it a privilege to be asked to officiate at this years National Ayrshire Show at UK Dairy Day. I am very much looking forward to the event and the high-quality Ayrshires that the show attracts".

Ayrshire Cattle Society Breed Manager, Duncan Hunter comments "We are thrilled that Gilmour has accepted our invitation to judge the 2019 National Ayrshire Show which will again be held at UK Dairy Day. The previous two National shows held at this event have been a huge success with breed classes excelling in both numbers and quality. The venue and facilities are the best in the UK and the show lends us a platform for us to promote ourselves both in the UK and overseas".

# UK DAIRY Day



## WEDNESDAY 11TH SEPT 2019

### 8.00 AM TO 5.30 PM



01923 695225  
[www.ukdairyday.co.uk](http://www.ukdairyday.co.uk)



TRADE STANDS | CATTLE SHOW  
SEMINARS | PRACTICAL DEMONSTRATIONS

THE INTERNATIONAL CENTRE,  
TELFORD, SHROPSHIRE, TF3 4JH

# The WINSOME Family

Duncan Hunter  
Breed Heritage Manager

**FAMILY  
FOCUS**

Cattle Services Ayr Ltd have added a new young bull to their stud from a consistent cow family, excelling production and type and health traits. Here we have a small insight to the family behind this exciting new sire – Heydale White Willow.

Back in December 1974 a BSR registered female was born sired by Pant

Victorious out of a non-registered dam in the Heydale herd belonging to the Berresford family. Her name was Heydale Winsome 18. This cow produced five daughters which were all ASR registered. One of those was Heydale Winsome 29 GP, born in 1977 by Pant Border General and she went on and produced three daughters including the first-generation Very Good scored Heydale Winsome 45. This Pant Entertainer sired daughter produced over 50,000kgs in her lifetime and bred the VG86 daughter Heydale Winsome 76 by Pant Lucky Jim. This cow was a consistent performer producing over 60,000kgs in her lifetime. She also produced three daughters, Winsome 88 EX92 4E, Winsome 93 VG88 and Winsome 101 VG89. Because of her breeding success she gained a 2 Star Brood Cow status.

It was the EX92 4E Heydale Winsome 88 who took this line of the Winsome family to the next level. Sired by Bankend Photo Finish, Winsome 88 who also has a Brood Cow status with 3 Stars and produced over 70,000 kgs in her eight completed lactations, including a yield of over 11,000kgs in 2005, gave birth to 5 daughters and 2 sons that were registered. Two of these daughters, which are well known by all the visitors to the Heydale herd are Heydale Winsome 97 EX92 4E by Bonnie Brae Tuxedo and Heydale Winsome 110 EX94 5E by Shady Walnut Conn. Winsome 97 is the line we follow to the next generation. Now a 6 Star Brood Cow and has produced over 80,000 kgs of production Winsome 97 has eight registered daughters and four registered Sons. Seven of her progenies are scored VG or EX. Her 2005 born Kellcrest Iceman daughter moves us on to the next generation. She is Heydale Winsome 109 EX94 9E 1 Star Brood Cow and again has produced over 80,000kgs of high-quality milk with over 4% butterfat in all of her ten lactations. This is the cow who is the Dam of Heydale White Willow,

Heydale White Willow is sired by the popular top UK sire Hilltown Oblique. He is a son of Hilltown Snowball 466 EX94 5E, a 2 Star Brood who was the third generation of 11 lactation dams. It should be noted that all three of those generations of Snowballs produced over 60,000kgs and were all scored Excellent! Hilltown Oblique himself has proved already that production, type and health traits are all his forte!

Make no mistake, Heydale White Willow has been bred from two of the best female lines in the breed who excel in longevity,



**GRAND DAM: HEYDALE WINSOME 97 EX92 4E**

production and health traits and is now available to you in conventional and SexedUltra 4M. Heydale White Willow offers an impressive PTA of PLI £239 +170kgs milk 0.07%bf 0.02%ptn. For our International friends we are delighted that he is also available for worldwide export.



**DAM: HEYDALE WINSOME 109 EX94 9E LP80\***

A reminder of the breeding behind HEYDALE WHITE WILLOW  
HILLTOWN OBLIQUE

Heydale Winsome 109 EX94 9E LP80 1 Star X Kellcrest Iceman  
|  
Heydale Winsome 97 EX92 4E LP80 6 Stars X Bonnie Brae Tuxedo  
|  
Heydale Winsome 88 EX92 4E LP60 3 Stars X Bankend Photo Finish  
|  
Heydale Winsome 76 VG86 LP60 2 Stars X Pant Lucky Jim  
|  
Heydale Winsome 45 VG LP50 X Pant Entertainer  
|  
Heydale Winsome 29 GP X Pant Border General  
|  
Heydale Winsome 18 x Pant Victorious



# CATTLE SERVICES NEWS

Cattle Services Sales & Marketing Manager, Sam Wake, keeps you up to speed with the genetic advancements made within Cattle Services



CATTLE SERVICES NEWS

2018 saw Cattle Services increase their sales on the 2017 sale figures with export sales remaining strong, showing that the interest for UK genetics continues to be very high across the world. Already in 2019, straws have been shipped to Finland and South Africa with other pending orders to America. It is fantastic to be able to send straws to 3 different countries

that we have not exported to for a number of years.

At home, it is very pleasing to receive fantastic reports on great conception rates when breeders have been using the new Sexed Ultra 4m product: one breeder in Northern Ireland has 7 calves due from 6 straws. This year, we will hopefully be releasing 4 new sires in the Ultra 4m product - one of these is Heydale White Willow who was released in early March. Willow is bred from the amazing Winsome family at Heydale Ayrshires. He is bred from 5 generations of cows, either scoring VG or EX, with his 3 nearest dams scoring EX94, EX92 and EX92. The dam of Willow is Heydale Winsome 109 EX94 who has completed 10 lactations and given over 80 tonnes of milk. The second dam of Willow, Heydale Winsome 97 EX92, has also completed over 80 tonnes of milk in 9 lactations. Willow is sired by the fantastic Hilltown Oblique who has been a breed leading PLI and Type chart topper for the last couple of years.



Heydale White Willow at Cogent Breeding Stud

The other 3 sires are free from Reality and Oblique bloodlines. One of these is a Celandine First Lord son from the outstanding Clover family. After the success of both Sandyford Supreme and Triclo, I am sure that another bull from this family will be a great addition to the Cattle Services portfolio.

In early February, Duncan and I had the opportunity to visit Cogent where we currently house some of our bulls. The state of the art facilities have better security than most houses. Surrounding the collection barns are 6 foot fences that are dug into the ground to stop any wildlife getting onto the site. Inside, the bulls are all housed in individual pens where they are fed their own specific diet to maximise collection performance. The nearest that we got to the bulls was from an upstairs room with a glass window. Whilst we were there, we had the opportunity to view 2 Ayrshire bulls: the first was Rosehill Manderville who still looks superb at the age of 6. He displays so much power and cleanness to the bone. Also on parade was Heydale White Willow who is a tremendous young sire and excels in dairy character and style.

An area that I wanted to bring you all up to speed on is that of getting bulls onto studs.

Cattle Services are very fortunate that we have good relationships with 4 studs in the UK. Cattle Services have always tried to work with different companies when collecting bulls to minimise the risk of working with just one company. Over the years, another big question I get asked is: 'Why don't we put more bulls on to centre?' I can assure you that we would love to test 20 bulls a year but this would not be feasible to a company of Cattle Services' size. Last year, we were able to release 6 new bulls and currently this year, 2 have been released already with another 3 in the pipe line. The biggest hurdle that we have when selecting bulls is health issues.

Over the past 2 years, we have had the following issues when we have selected a suitable bull to enter stud:

- A cohort has failed an IBR test so the bull has been declined
- An inconclusive TB reading at the time of testing
- A farm not being clear of TB for 2 years
- A high IBR reading on the bull due to the dam being vaccinated for IBR
- Bulls are too old to enter stud and bulls that have already been used on farm

As a general rule, bulls have to have a series of tests that include: TB, IBR, Johnes, Lepto, Q Fever and BVD. The dam of the bull is tested for IBR, Johnes and TB. If needed, cohorts to both the bull and dam are also tested to determine herd health is good.

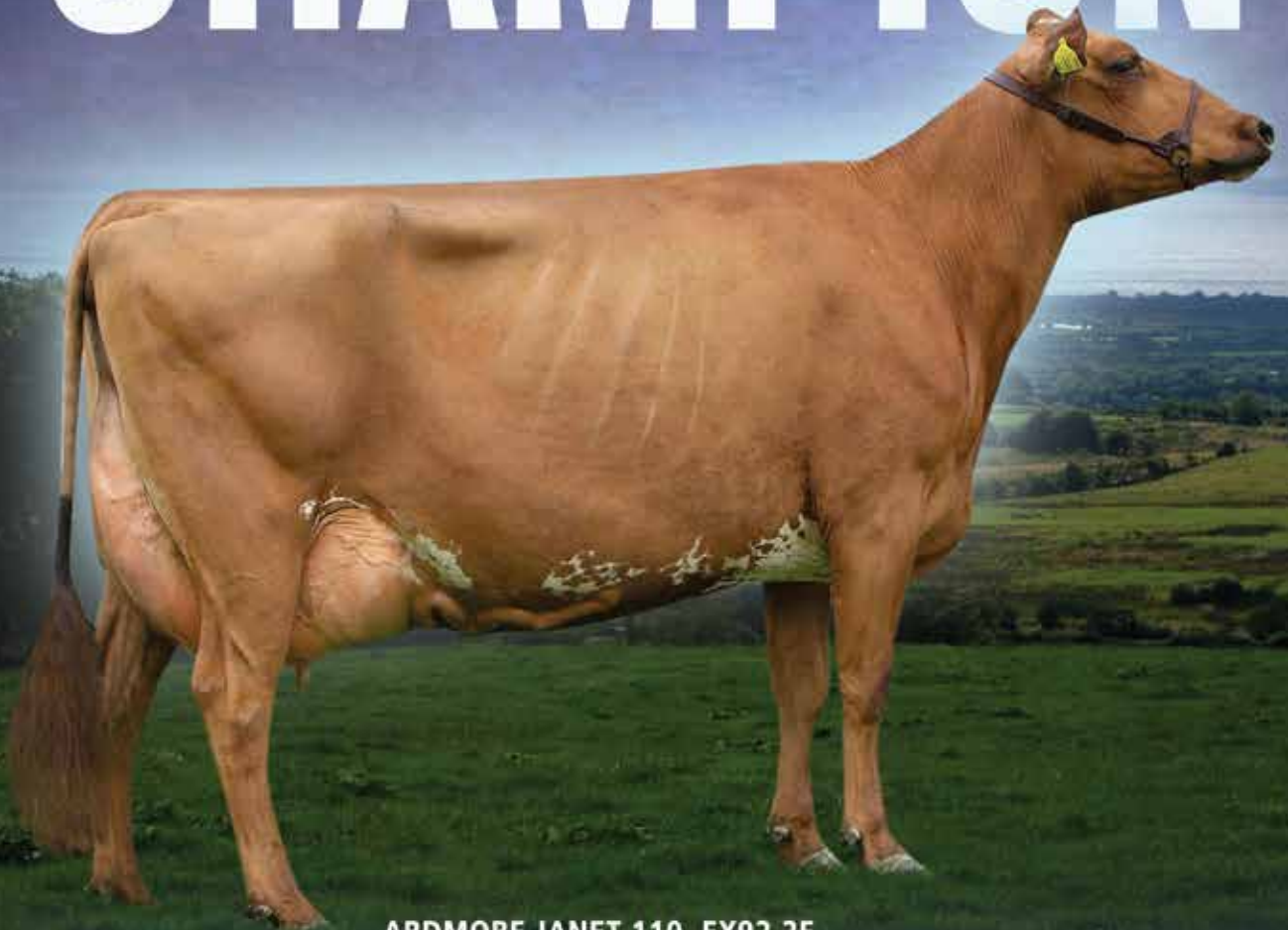
Studs are looking to take bulls into centres earlier (at around 6 months of age) to minimise disease risk and also to get them onto a program so that collection can begin at 11 months of age.

As you can see, there are a lot of hurdles to overcome even before you try to draw a sire. If you have an exciting bull due or born, I would strongly advise you to take out the following protocols:

- Try not to vaccinate the dam when she is pregnant
- Do not vaccinate the young calf - if possible, pen them on their own and feed powdered colostrum if it is available
- And the last thing and probably the biggest is to register BULL calves from your best cows and families!!

Remember to keep up to date with what is going on at Cattle Services by checking the website ([www.cattleservices.org](http://www.cattleservices.org)) and following the facebook page. I look forward to seeing you all throughout the year.

*Another Ulster*  
**CHAMPION**



**ARDMORE JANET 110 EX92 2E**

Sired by De la Plaine Prime

1. 3/2 5,980kgs 250 4.31% 3.36%    2. 4/1 7,886kgs 305 4.53% 3.48%  
3. 5/2 9,276kgs 305 4.70% 3.68%

Champion RUAS Balmoral Show 2018 & Member of Champion Interbreed Pairs Balmoral 2018

Champion RUAS Winter Fair 2017 & 2018 Res Interbreed RUAS Winter Fair 2018

Winner 5Yr & 6/7 Yr Old All Britain & Ireland Photographic Competition 2018

*Visitors & Enquiries Welcome*

**ARDMORE AYRSHIRES**

J & M HUNTER

35 LOUGHVIEW ROAD, CRUMLIN, CO ANTRIM, NORTHERN IRELAND BT29 4RE

TEL: 02894 422322    JOHN: 07725 161170    MICHAEL: 07743 918768

# RUAS Winter Fair

Another good display of Ayrshires from our breeders in Northern Ireland were displayed in front of Brian Behnke from the USA, who was the judge of all the dairy breeds at the Eikon Centre back in December. The Ayrshire stand at this show saw another busy day with many enquiries for our breed.

John and Michael Hunter, Ardmore, again had a very successful day winning the Breed Champion and took the Reserve championship. Champion of the day was Ardmore Janet 110, a De La Plaine Prime daughter having had 4 calves. This was the second year running this cow has taken the Championship at the Ulster Winter Fair. Brian Behnke also made Janet Reserve Interbreed Champion behind the Holstein winner. Ardmore Orphan 117 who was second in the senior cow class to Janet 110 won the Reserve Championship.

The Junior cow winner, Threemile Pretty Rock from Christian Keenan was named Honourable Mention Champion. The Keenan family also won the milking heifer class with Threemile Rusty Burdette. There were also wins for Martin King who won the Maiden heifer class with Kirkinriola PRG Dea 2, and Stewart and Nyree Baxter won the Dry cows with Erne Sea Lily.

A full list of results can be viewed on the Society website.



Champion RUAS Dairy Show: Ardmore Janet 110

# SHOW SUCCESS

## UK Dairy Expo 2019

Just over 12 months ago, Ayrshire Young Breeder Beth Granville attended the Perfection Collection sale and invested into a share of the 2-year-old Sandyford Prime Heather Honey, consigned by ET Tomlinson & Son. A year later as a 3-year-old, Sandyford Prime Heather Honey has won the Grand Championship at the Borderway UK Dairy Expo. Judge Molly Sloan from the USA described her as a beautiful young cow with tremendous dairy quality and so much style.

The results of the whole show in both the Junior and Senior sections have demonstrated the dedication and success of the Sandyford Ayrshire herd. Blaise Tomlinson and family entered a large team for the show and started off by winning the Junior Championship with Sandyford Triclo Fable, who is Co-owned with A Timbrell and B Crothers. The Tomlinson's also took the Reserve Junior Champion with Sandyford Supreme Clover.

The senior show saw the Tomlinson family win all but one class. The 2-year olds were won by Sandyford Supreme Fable 2, a maternal sister to the Junior Champion and out of the second placed four-year-old Sandyford Dark Fable. She then went on to take the Honourable mention in the championship. The Champion, Sandyford Prime Heather Honey as previously stated is in joint ownership with Beth Granville and was the first placed three-year-old. Winning the 4-year-old class and going on to take the reserve breed Champion was Sandyford Lucky Florrie who was three weeks fresh. In the Senior cow class, it was Philip and James Mattinson with Troutbeck Burdette Jess who took the win. Jess has now had five calves and was yielding over 50kgs daily.

Congratulations to all of the Ayrshire exhibitors who displayed an exhibition of great quality females for the Ayrshire breed.



Junior Champion: Sandyford Triclo Fable



Champion: Sandyford Prime Heather Honey









# Club News



## Cumberland

Shaun Rennie from the Brocklehill herd came to judge the clubs Progeny competition on a very windy day in October and the results were as follows:

### MOTHER AND DAUGHTER

- 1st Sanderson Burdette Bunty and Sanderson CS Bunty. D + C Sanderson, Thackthwaite Hall.
- 2nd Troutbeck Oranje 3 and Troutbeck Classic Oranje 6. FJ + M Mattinson and Sons, Rosewain.
- 3rd Plaskett Jolly 191 and Plaskett Jolly 197. M/S Armstrong, Plaskettlands.

### 2 COWS BY 1 SIRE

- 1st Troutbeck Jess 2 and Troutbeck Jess 3, Sire Palmyra Tri-star Burdette, FJ + M Mattinson and Sons.
- 2nd West Mossgiel Lizzie 175 and West Mossgiel Lizzie 177, Sire Aramis, FJ + M Mattinson and Sons.
- 3rd Ploughlands Buttermilk and Ploughlands Furious 3, Sire Plaskett Solway Brown Boy, RT = M Cartner, Low Ploughlands.

### 2 HEIFERS BY 1 SIRE

- 1st Troutbeck Peony Rose and Troutbeck Avril, Sire Troutbeck Skyfall. FJ + M Mattinson and Sons.
- 2nd Sanderson Skyfall Isobel and Sanderson Skyfall Lamplight, Sire Troutbeck Skyfall. D + C Sanderson.
- 3rd Troutbeck Ursula and Troutbeck Antic, Sire Plattery Talent Leonard, FJ + M Mattinson and Sons.

### 40,000 kg Cow

- 1st Troutbeck Oranje 3, Sire Calderglen Triple Threat, FJ + M Mattinson and Sons.
- 2nd Plaskett Jolly 197, Sire Stamford First Prize, M/S Armstrong.
- 3rd West Mossgiel Lizzie 177, Sire Aramis. FJ + M Mattinson.

The clubs Dinner Dance was held in November with our judges for the year as our guests, Mark and Jane Barnes for the Herds and Shaun Rennie for the Progeny competition.

Prizes were also awarded for the Production Awards.

### 365 Day Yield

365 day yield + weight of fat + weight of protein

	Milk (kgs)	Fat (kgs)	Protein (kgs)	Total (kgs)
1st-West Mossgiel Mayflower	14,020	535	442	14,997
2nd Troutbeck Antic	13,361	591	411	14,363
3rd Sanderson El Evergreen	11,345	589	426	12,360



### Lifetime Yield Weight of milk + weight of fat

	Milk (kgs)	Fat (kgs)	Total (kgs)
1st-Waxham Biscuit 20	131,299	5,764	137,063
2nd Plasket Lucky Charm 252	83,786	3,281	87,067
3rd Plasket Jolly 191	83,046	3,573	86,619

### Lifetime Protein

- 1st WAXHAM BISCUIT 20 4,606 kgs
- 2nd SANDERSON ES VICKI 2,917 kgs
- 3rd PLASKETT LUCKY CHARM 252 2,808 kgs

### Annual Herd Cell Count

- 1st PLASKETT

The annual stockjudging was hosted by the Mattinson Family at Bridge House, Wigton, Master Judge Jessica Hassall.

### Juniors

- 1= Caris Williams, 2nd Hattie Hassall

### Seniors

- 1st Robert Murray
- 2= Ian Coulthard and Geoff Pettit

Sweepstake winner was Ian Coulthard.

In December a team consisting of Annabell, Christine, Mike, Shirley, Geoff, Frank and Phillip took part in Annual Border and Lakeland Holstein Club Quiz. After a few hard fought rounds they came out in 1st place winning the trophy. Well done team!

# Club News



## Cheshire

Herds Competition 2018  
Judge Martin Parkes

ADULT STOCK	INSPECTION	PRODUCTION	TOTAL
1st A.Norbury	900	1108	2008
2nd S. Bailey	800	1127	1927
3rd I. Patrick	1000	1894	1894
4th S. Oultram	950	934	1884
5th J. Bostock	750	1124	1874

### ADULT STOCK INSPECTION ONLY

1st I. Patrick	1000
2nd S. Oultram	950
3rd A. Norbury	900
4th S. Bailey	800
5th M. Aidley	775
6th J. Bostock	750

### PROGENY GROUP

1st J. Bostock (Sunrise Special Blend)
2nd S. Oultram (Stamford Black Diamond)
3rd I. Patrick (Hunnington Fantastic)

TWO FEMALES BY SAME SIRE	INSPECTION	PRODUCTION	TOTAL
1st A.Norbury (Loukat Oz)	1000	1338	2338
2nd S. Oultram (Stamford Ambassador)	850	1306	2156
3rd S. Bailey (West Mossgeil Star Attraction)	650	1515	2138
4th S. Oultram (Stamford First Quality)	700	1435	2135
5th M. Aidley (Topspeed Kodak)	900	1216	2116
6th I. Patrick. (Garrett Hall Titan)	800	1242	2042

### LIFE TIME YIELD OF FAT & PROTEIN

1st I. Patrick (Garrett Hall Julie 35) 5782kg	Sire East Church Ross
2nd S. Oultram (Stamford Pimple 3) 5437kg	Sire Stamford Triple Threat

### CELL COUNT

1st S. Bailey	- 104
2nd A. Norbury	- 163
3rd J. Bostock	- 165

BEST HEIFER BREEDER	HEIFER NAME	BEST COW BREEDER	COW NAME
1st J. Bostock	Sunrise Special Nutbush	1st S. Bailey	Beeline Texas Swan
2nd S. Bailey	Beeline Texas Ruth	2nd S. Oultram	Stamford Western 43
3rd I. Patrick	Whitegate Snowdrop 2	3rd IM. Aidley	Pagewood Topspeed Bessie
4th S. Oultram	Stamford Hera	4th A. Norbury	Booth Anne
5th A. Norbury	Booths Dreamer Aconite 2	5th I. Patrick	Garrett Hall Priscilla 328
6th M. Aidley	Pagewood Burdette Bessie	6th J. Bostock	Sunrise Scottish Flame

YOUNGSTOCK	DAM & HER DAUGHTERS
1st S. Oultram	1st I. Patrick (Florence Family)
2nd I. Patrick	2nd S. Bailey (Ruth Family)
3rd A. Coutts	3rd S. Oultram (Charm Family)
4th S. Bailey	

SCAR SHIELD (Stock Judging) Steve Bailey 208pts

## Ulster

I was hoping to be able to welcome the start of Spring, but with snow falling today, I think that would be a bit premature!

It seems a long time ago now, but back in November we had our annual Dinner and Prize giving in the Adair Arms Hotel, Ballymena, and it is always a very sociable and enjoyable evening. We enjoyed a delicious meal and it was lovely to catch up with fellow members away from the Show and Sales Ring. Rosemary O'Boyle of one of our main Sponsors, OB Construction, kindly agreed to give out the Prizes and we also were joined on the evening by representatives from one of our other Sponsors, Danske Bank. It is always satisfying to give something back in return for their generosity to us throughout the year.

Our next main event was the Royal Ulster Agricultural Society Winter Fair, held at Balmoral Park, Lisburn. Again there was a great show of Ayrshire Cattle from most of the top herds, and again the top honours went to the Ardmore Herd of John and Michael Hunter.

The Champion and Reserve both came from the Senior Cow in milk class. Champion was Ardmore Janet 110 and Reserve went to Ardmore Orphan 117. This was an outstanding result for the Hunter family and congratulations to them for all their hard work and effort in retaining the Championship.

The Heifer Championship was won by the Keenan Family with Three-mile Rusty Burdette and they also had the Reserve Champion with Threemile Elegant Bella, another great result.

The Junior Championship was won by the King family with Kirkinriola PRG Dea 2, and Reserve Junior Champion was Holly Keenan's Threemile Lulu Decaf. Congratulations to all the winners and competitors, it was a great advertisement for the Ayrshire Breed.

Our first Club meeting of the year was held in Greenmount College, and we were very pleased to welcome Chief Inspector Roy Robinson who is Head of the Cross Border Rural Crime Task Force. As well as advising us on how to prevent Rural Crime, he regaled us with his experiences throughout the country trying to prevent all types of rural crime and he was both interesting and amusing, even though

# Club News



## Devon

The end of November saw our annual Devon Herds competition results being presented at our Christmas meal at the Gipsy Hill Hotel, Exeter. The evening was well attended and we were entertained by a local vet with his Herriot style reminiscing of his early days in practice as a young vet..thank goodness he's more experienced now! But many thanks to Tony Kemmish of St Boniface Vets, for a hilarious 20 minutes! Congratulations to all competition winners and for making such a huge effort to impress our judge, Michael Howie, who sadly couldn't make the evening. An auction was held to raise funds for The Farm Community Network Charity. An amazing sum of £1147 was raised. Sincere thanks to all our sponsors who generously donated items and services. And also to all the bidders who made it possible to raise so much for such a good cause.

A foggy evening in February half term saw a well attended annual club Skittles match. The Floppers beating the Flippers by 1 pin. Well done to Richard Martin for a winning score of 10 in the skittle off against Stuart Pikes score of 9, for highest score accolade!

### BEST INDIVIDUAL HEIFER

- 1 Chris & Connie Creeper – Tri-Star Burdette Pledge
- 2 Bowden Farm Ptosp – Bowden Napier's Treacletart
- 3 R&A Cornish – Butterbesley Ultra Violet Violet

### GROUP OF 6 COWS

- 1 Bowden Farm Ptosp
- 2 Chris & Connie Creeper
- 3 R&A Cornish
- 4 M D Evans
- 5 Jim Pearce

### GROUP OF 3 HEIFERS - SAME SIRE

- 1 Bowden Farm Ptosp
- 2 Bowden Farm Ptosp
- 3 M D Evans

### GROUP OF 3 HEIFERS – ANY SIRE

- 1 Chris and Connie Creeper
- 2 R&A Cornish

### HEIFER HAVING CALVED ONCE (INSPECTION ONLY)

- 1 Chris & Connie Creeper- Tri-Star Platinum Melody
- 2 R&A Cornish – Bruchag McCoy Marjorie
- 3 WB & ES Marnham – Nowaday

### BEST INDIVIDUAL COW (INSP ONLY)

- 1 Chris & Connie Creeper- Gargus Jemima 3
- 2= R&A Cornish- Butterbesley Viobull Sarah 2=MD Evans – East Church Ristourn Nowaday
- 3 Bowden Farm Ptosp- Bowden Treacle Tart

### 3 GENERATIONS (INSP ONLY)

- 1 Chris & Connie Creeper
- 2= Bowden Farm Ptosp 2= RC & T Martin
- 3 LE Rockett & T& A Marshall

### PAIR OF IN CALF HEIFERS

- 1 R&A Cornish
- 2 LE Rockett & T & A Marshall
- 3 Anna Mortimer

### BEST GROUP OF 3 OR MORE HEIFERS UNDER 12 MONTHS (INSP)

- 1 MD Evans
- 2 LE Rockett & T & A Marshall
- 3 RC & T Martin

### BEST HERD (INSP)

- 1 R & A Cornish – Butterbesley
- 2 Bowden Farm Ptosp - Bowden
- 3 MD Evans- East Church

### GROUP OF 4 BULLING HEIFERS (INSP)

- 1 Bert Lawrence
- 2 Bowden Farm Ptosp
- 3 R & A Cornish

### 3 COWS HAVING CALVES AT LEAST ONCE (INSP)

- 1 Chris & Connie Creeper
- 2 Chris & Connie Creeper
- 3= R & A Cornish 3= LE Rockett & T & A Marshall

### YOUNG BREEDER-BEST PRESENTED AND MOST KNOWLEDGEABLE HANDLER WITH CALF

- 1 Beth Murch
- 2 Vikki Murch
- 3=Reece Martin 3=Ryan Martin

### MOST POINTS GAINED AT SHOWS

- 1 LE & T&A Marshall
- 2 R&A Cornish
- 3 Bowden Farm Ptosp



### YOUNG MEMBER 16 URS OR UNDER GAINING MOST POINTS IN HANDLING/SHOW CLASSES

- 1 Anna Mortimer
- 2 Courtney Martin

### COW WITH HIGHEST FINANCIAL VALUE-LAST LACTATION

- 1 Chris & Connie Creeper Tri- Star Real Perfecta
- 2 Bowden Farm Ptosp Bowden Candice
- 3 The Tristram Family Rogus Emmerdale 120

### COW WITH HIGHEST LIFETIME YIELD

- 1 Bowden Farm Ptosp – Bowden Katie Anne
- 2 MD Evans – East Church Ambitious Julia
- 3 The Tristram Family- Rogus Edge 11

### HERD WITH HIGHEST MILK QUALITY

- 1 Chris & Connie Creeper
- 2 R & A Cornish
- 3 Bowden Farm Ptosp

### COW OF THE YEAR (PROD & INSPEC)

- 1 Chris & Connie Creeper- Tri-Star Real Perfecta
- 2 R&A Cornish- Butterbesley Viobull Welcome
- 3 Bowden Farm Ptosp- Bowden Candice

### ROGUS ELAINE AWARD – OLDEST 100% AYRSHIRE COW

- 1 MD Evans – East Church Ambitious Julia
- 2 R & A Cornish – Hilltown Star 404
- 3 Bowden Farm Ptosp- East Church Millie

### OVERALL POINTS GAINED THROUGHOUT THE COMPETITION

- 1 Chris& Connie Creeper 62 points
- 2 R & A Cornish. 61 points
- 3 Bowden Farm Ptosp. 58 points

Many thanks, as usual, to Paul Charlton of Charlton Agricultural Solutions, for compiling the competition results year on year.

# PRODUCTION AWARDS

## STAR BROOD COWS

Prefix	Owner/Breeder	Animal's Name	Sire	Class.	Award
HARRY'S	H BOLDERSTON	LIVERTON BUTTER BEAM	SANDERSON BUTTER GOLD	VG88	1 STAR
WHITECROFT	J D & B F BROADLEY & SONS	WHITECROFT NELLIE 38	CELANDINE FIRST LORD	EX94 (5)	2 STARS
ROSEHILL	WRC & J E CHRISTOPHERS	ROSEHILL VERYLIGHT	HALMYRE URR LIMELIGHT	EX92 (3)	2 STARS
ROSEHILL	WRC & J E CHRISTOPHERS	ROSEHILL AMBER KNEES	ROSEHILL BEES KNEES	EX90	1 STAR
ROSEHILL	WRC & J E CHRISTOPHERS	ROSEHILL ANAROSA	STRETTON TRIPLE PRIME	VG86	1 STAR
ROSEHILL	WRC & J E CHRISTOPHERS	ROSEHILL BLACKBERRY JELLY	ROSEHILL BLACKTHORN	EX90 (2)	1 STAR
ROSEHILL	WRC & J E CHRISTOPHERS	ROSEHILL BLACK VERONIQUE	ROSEHILL BLACKTHORN	EX92 (4)	1 STAR
WEST MOSSGIEL	R & R B CUNNINGHAM	BARR ASTRAL MAID 34	BARR QUICKSILVER	EX93 (6)	1 STAR
CARNELL	G & R TEMPLETON	CARNELL SNOWDROP 185	CARROUSEL REGIMENT RED	EX92 (7)	7 STARS
CARNELL	G & R TEMPLETON	CARNELL SNOWDROP 239	LADINO PARK TALENT	EX94 (4)	1 STAR
SANDYFORD	E T TOMLINSON & SON	SANDYFORD MAPLE CLOVER	MAPLEBURN REMINGTON	VG88	2 STARS

## LP100 COWS

### Brocklehill Water Baby VG86 LP100 – J & K Rennie

Brocklehill Water Baby has reached the LP100 status following her 11th completed lactation, having produced over 10,000kgs on five occasions and calving regularly each year. She has four registered daughters. Brocklehill Water Baby is 100% pure and sired by Bonnie Brae Tuxedo and out of an Attwell Amadeus Dam with a G Dam sired by Brocklehill Champagne.

### Heydale Sheila 75 EX93 5E LP100 – DW Berresford & Son

Sired by Covey-Farms Reno and out of a Brocklehill Happy Spirit dam, Heydale Sheila 75 certainly has the looks and the production. Scored Excellent on five occasions with her 93 points being gained in lactation 10. She has had consistent production through her productive life with all yields between 8,200kgs and 10,583kgs. Sheila 75 has three daughters and one son registered.

### Horseclose Alice 5 VG88 LP100 – James A McGarva

Consistent high yields see Horseclose Alice 5 reach 100 tonnes of milk in her ninth lactation producing up to over 11,000kgs in her seventh lactation. Only two daughters have been registered from Alice, one by Horseclose Einstein and one by Haresfoot Elegant. She is sired by Hilltown Hijack and is out of a dam by Harperfield Immortal Memory.

## LP80 COWS

Prefix	Owner/Breeder	Animal's Name	Sire	Class.	Lac.
BELLFIELD	THE COWHILL TRUST	BELLFIELD BRIGHT PEARL 150	BELLFIELD HAPPY SPIRIT		10
BIDDESSEN	BIDDESSEN FARM PARTNERSHIP	BAILIFFSCOURT HORTENSE 267	HORSECLOSE JUBILEE	EX93	8
BIDDESSEN	BIDDESSEN FARM PARTNERSHIP	BIDDESSEN HELEN 61	ROSEHILL BLACKTHORN		9
BIDDESSEN	BIDDESSEN FARM PARTNERSHIP	BIDDESSEN PAULINE 88	CHANGUE BACK UP	F74	8
BRIERYSIDE	G LAWRIE & SONS	BRIERYSIDE GOLDEN SAND PAULETTE	BRIERYSIDE GOLDEN SAND	EX93	8
BROCKLEHILL	J & K RENNIE	BROCKLEHILL FLORENCE	WEST MOSSGIEL LORD OF THE RING	VG87	8
CALDERVALE	W S MILLAR & SON	CALDERVALE EXCELL 21	BADENHEATH BROOKLYN	EX90	9
COTTOWN	MR JOHN DRUMMOND	COTTOWN AMELIA 4	CRAIGTOWN STARDUST	VG86	9
COTTOWN	MR JOHN DRUMMOND	COTTOWN RIHANNA 3	CRAIGTOWN STARDUST	EX92	7
HALMYRE URR	L DAVIDSON & SONS	HALMYRE URR MISS DOROTHY 44	TWEMLOW MAJOR THREAT	VG87	7
KNOWE	MR G TEMPLETON	KNOWE SILVER BELL 4	BLACKADDAR B B KELLOGG	EX91	10
LANGBARN	MR DONALD ARMSTRONG	LANGBARN PATSY 4	DES CHAMOIS PAT LARO		10
DUDLEY WOOD	G HALL & SON	PARK HEAD LADY JEAN 2	MARLEYCOTE LADIES MAN		7
PARK HEAD	H TINKER & SONS	PARK HEAD WENDY 2	CORRINGHAM RASPUTIN RED		6
RAVENHILL	MR JOHN SUFFERN	RAVENHILL ETHEL 394	RAVENHILL ENTERPRISE	EX95	9
RYECROFT	D & K HAWORTH	RYECROFT RAJAH DUSKY	RYECROFT RAJAH	EX90	8
STAMFORD	H W OULTRAM & CO	STAMFORD ROSELINDA 65	STAMFORD TRIGGER	EX93	10
WEST MOSSGIEL	R & R B CUNNINGHAM	WEST MOSSGIEL MAYFLOWER 191	WEST MOSSGIEL CLASS TALENT	EX93	8
WHITECROFT	J D & B F BROADLEY & SONS	WHITECROFT BELLA 32	WHITECROFT JACOB	EX92	9
WROUGHTON	MR MICHAEL WINDEL	WROUGHTON DARLEY	STAMFORD TRIGGER	GP80	9

## LP60 COWS

Prefix	Owner/Breeder	Animal's Name	Sire	Class.	Lac.
AUCHENSALE	MR ROBERT J CARRUTH	AUCHENSALE SHOTTLE JODIE	BARCRAIG MARTY SHOTTLE	VG88	7
BALLYNAHONE	MR WILLIAM HENDERSON	BALLYNAHONE FLASH GIRL 7	CHANGUE TRYST	GP82	7
BALLYNAHONE	MR WILLIAM HENDERSON	BALLYNAHONE MAY 9	RAVENHILL THUNDER BIRD	GP83	9
BALLYNAHONE	MR WILLIAM HENDERSON	BALLYNAHONE MISS DONALD 8	WILLSBRO RED RAZZLE		6
BEELINE	MESSRS S N BAILEY & PARTNERS	MIDDLE RUTH MBB	MIDDLE BROWN BOY	EX94	11
BELFIELD	THE COWHILL TRUST	BELFIELD BRIGHT PEARL 157	CASTERN COMMODORE		7
BELFIELD	THE COWHILL TRUST	BELFIELD EVERGREEN 48	MARGOT CALIMERO		10
BELFIELD	THE COWHILL TRUST	BELFIELD FAIRY 19	HOWIE'S ADMIRAL		7
BIDDESSEN	BIDDESSEN FARM PARTNERSHIP	BIDDESSEN RUSSET 8	CHANGUE TRYST	VG85	7
BIGGINVALE	R T & J I ADAMS	BIGGINVALE PEG 69	WAXHAM EACH WAY	VG88	6
BIGGINVALE	R T & J I ADAMS	PARK HEAD CANDY 2	CRAIGTOWN PANTHER	EX93	6
BRADNOP	MR M J & D NEEDHAM & SON	BRADNOP ELSIE 11	BRADNOP TRIBUTE	VG88	9
BRIERYSIDE	G LAWRIE & SONS	BRIERYSIDE CLASSIC SHONA 2	POOS STADEL CLASSIC	VG89	5
BRIERYSIDE	G LAWRIE & SONS	BRIERYSIDE CROWN WREN	MEIKLE LAUGHT TRIPLE CROWN	GP84	7
BRIERYSIDE	G LAWRIE & SONS	BRIERYSIDE DICTATOR PANSY	BRIERYSIDE DICTATOR	VG85	6
BRIERYSIDE	G LAWRIE & SONS	BRIERYSIDE EXECUTIVE AMELIA	WAXHAM EXECUTIVE	VG86	8
BRIERYSIDE	G LAWRIE & SONS	BRIERYSIDE EXECUTIVE LILLI ANN	WAXHAM EXECUTIVE	VG86	8
BRIERYSIDE	G LAWRIE & SONS	BRIERYSIDE RAZZLE SEA BABY	WILLSBRO RED RAZZLE	EX93	6
BRIERYSIDE	G LAWRIE & SONS	BRIERYSIDE STADEL PEAR	POOS STADEL CLASSIC	VG85	6
BURNSIDE	MR ROBIN YOUNG	BURNSIDE MODEM STACY	LAGACE MODEM ET	G78	7
CALDERGLEN	J & M BARR	CALDERGLEN SUSAN 2	CALDERGLEN LANCELOT	EX90	9
CALDERVALE	W S MILLAR & SON	CALDERVALE CRUMMIE	CALDERVALE CALEDONIA	G78	8
CHANGUE	MR ROBERT M STEVENSON	CHANGUE MEMORY 27	CHANGUE HINDSIGHT	H280	11
CHANGUE	MR ROBERT M STEVENSON	CHANGUE PAMELA 48	CHANGUE STADIUM		7
COLFIN	MR WILLIAM A MCWILLIAM	COLFIN FLASH 30	COGENT RETINUE RED	GP82	8
COLFIN	MR WILLIAM A MCWILLIAM	COLFIN GEORGIA 10	LA SAPINIERE CACYLITE	G76	8
COTTOWN	MR JOHN DRUMMOND	COTTOWN ASHLEIGH 12	COTTOWN JUSTICE	EX91	6
CROFTSIDE	MR WILLIAM MCHARG	CROFTSIDE AILEEN 28	BARR AVIATOR		6
CROFTSIDE	MR WILLIAM MCHARG	CROFTSIDE SHEILA 136	BARR AVIATOR		7
CUTHILL TOWERS	A & S LAWRIE	CUTHILL TOWERS MISS BLONDIE 2	CUTHILL TOWERS WHITE KNIGHT	EX94	6
GARTHLAND	MR J A MCCOLM	GARTHLAND REMOVE	GARTHLAND JOSEPH	GP82	7
GLENCHAPEL	MR JOHN K JAMIESON	GLENCHAPEL ASTER 52	HUMESTON RED SAND		8
HALMYRE URR	L DAVIDSON & SONS	HALMYRE URR JINKS 447	STERNDAL ROSE ROYCE RED	VG87	8
HALMYRE URR	L DAVIDSON & SONS	HALMYRE URR LOUISE 229	HOWIE'S STELTH		6
HIGH MARK	J S WATSON	CHANGUE CELANDINE 184	CHANGUE WRANGLER	VG85	8
HIGH MARK	J S WATSON	HIGH MARK JURIST MELANIE	AUCHENSALE B L JURIST	EX93	7
HILLTOWN	M/S NICHOLLS	HILLTOWN VIOLET 213	HIDDEN VALLEY GARTH	EX90	8
HILLTOWN	M/S NICHOLLS	HILLTOWN VIOLET 230	GLEN MALCOLM ZION	EX90	7
HUNNINGTON	L & C WINDOW	HUNNINGTON JOYBELL 81	HUNNINGTON MANDELLA	EX90	7
HUNNINGTON	L & C WINDOW	HUNNINGTON MONICA 64	HUNNINGTON MANDELLA	EX91	7
JOLYN	J W LYNHAM & SON	JOLYN NORMA 250	B JURIST		7
KEIR MAINS	MRS M YOUNG & SONS	KEIR MAINS GLADNESS 26	INCH SVEN	VG85	6
KIRKINRIOLA	R & M KING	KINNINMONTH CINDY	HUMESTON REDDISH	EX90	10
KIRKINRIOLA	R & M KING	KIRKINRIOLA SPW MARGIE	STAMFORD PRIZE WINNER	EX93	7
KNOWE	MR G TEMPLETON	KNOWE BARBY	JELYCA OBLIQUE	EX91	5
KNOWE	MR G TEMPLETON	KNOWE BEATRICE 7	STERNDAL ROSE ROYCE RED	EX93	6
KNOWE	MR G TEMPLETON	KNOWE WHITE LILY 481	BRIERYSIDE CENTURIAN	EX90	7
KNOWE	MR G TEMPLETON	KNOWE WHITE LILY 505	CARNELL ASSET MAKER	VG88	6
LANGBARNES	MR DONALD ARMSTRONG	LANGBARNES CLAUDINE 3	DE GUI VAG MOZART		7
LANGBARNES	MR DONALD ARMSTRONG	LANGBARNES CLAUDINE 4	DUNLOP'S VOLCANO		8
LANGBARNES	MR DONALD ARMSTRONG	LANGBARNES ELSIE 4	BROCKLEHILL BURNISHED GOLD		14
LANGBARNES	MR DONALD ARMSTRONG	LANGBARNES HOLLY 2	BROCKLEHILL MUSICIAN		8
LANGBARNES	MR DONALD ARMSTRONG	LANGBARNES TINTO 3	CHANGUE TRYST		8
LYNER	MR COURTNEY WALTERS	LYNER IONA	LYNER FERDINAND	EX90	8
LYNER	MR COURTNEY WALTERS	LYNER REBECCA 25	LYNER FERDINAND	VG86	9

# LP60 COWS

Prefix	Owner/Breeder	Animal's Name	Sire	Class.	Lac.
MAIR'S	MR COLIN MAIR	MUIRSIDE BUNNY 4	MORWICK MENTOR RED	EX91	6
MARLEYCOTE	MR G G BAYNES & SON	MARLEYCOTE MERMAID 4	MARLEYCOTE BLIZZARD	VG87	7
MARLEYCOTE	MR G G BAYNES & SON	WEST MOSSGIEL MISS MODERN 28	WEST MOSSGIEL ARAMIS	EX94	5
MEATHOP	MR STEPHEN HARRISON	PYLON ELAINE 9	HUNNINGTON MANDELLA	EX90	9
MUIR	W & A WATSON	MUIR MELISSA	TWEMLOW MAJOR THREAT	EX94	7
MUIRDYKES	MR JOHN STEVENSON	MUIRDYKES ALISON	BANKEND LORD ONTARIO		9
NEW CLOSE	H & J E WATSON	NEW CLOSE CAROLINE 26	BRIERYSIDE CANADIAN COMMANDER	EX92	11
NORTHNEY	A H BROWN (HAYLING ISLAND) LTD	NORTHNEY JENNY 28	RAVENHILL CRACKER	H474	10
NORTHNEY	A H BROWN (HAYLING ISLAND) LTD	NORTHNEY MAY 43	CRAIGTOWN AMBER	H282	9
OLD MILL	G & A TAYLOR	OLD MILL GLORIA 32	CHANGUE TRYST		6
PAGEWOOD	MR MATT AIDLEY	ATTWELL BESSIE 45	ATTWELL MYRTLES BOY	EX92	7
PAGEWOOD	MR MATT AIDLEY	HUNNINGTON MONICA 60	ANDERLINI'S WILLYBOY	EX90	11
RYECROFT	D & K HAWORTH	RYECROFT CLASSIC QUILT	POOS STADEL CLASSIC	EX94	6
RYEMUIR	WILLIAM SLOAN & CO	RYEMUIR LAWN BOY SPANKIE	AGGRAVATION LAWN BOY P-RED	EX90	5
RYEMUIR	WILLIAM SLOAN & CO	RYEMUIR TWISTER FLO	HS TWISTER	EX91	6
SANDERSON	D & C SANDERSON	SANDERSON ES BLACKIE	SANDERSON EXTRA SPECIAL	VG86	7
SANDERSON	D & C SANDERSON	WEST MOSSGIEL CHERUB 196	HENKESEEN REMEDY-RED	EX91	6
STAMFORD	H W OULTRAM & CO	STAMFORD BABS 13	STAMFORD TRIGGER	EX91	9
STAMFORD	H W OULTRAM & CO	STAMFORD FREDA 35	STAMFORD TRICORN	EX90	8
STREET	MESSRS HEBDITCH	STREET HORNS ICEMAN	KELLCREST ICE MAN		9
STREET	MESSRS HEBDITCH	STREET PAM VERA TRYST	CHANGUE TRYST		7
STREET	MESSRS HEBDITCH	STREET PURE SNOW ICEMAN	KELLCREST ICE MAN		8
STYCHE	MR J P SEATON	STYCHE NAPIER MELODY	ARDMORE CROWN NAPIER	EX91	5
SWAITES	JOHN ADAMSON & SON	SWAITES LOIS 3	SWAITES TRAFALGAR		7
SWAITES	JOHN ADAMSON & SON	SWAITES PANSY 15	BRIERYSIDE RED CENTURIAN	VG86	6
TREWMOUNT	ALFRED EMERSON & SON	WILLOXTON QUAKER GIRL 42	BRIERYSIDE PURE GOLD	EX94	7
TREWMOUNT	ALFRED EMERSON & SON	WILLOXTON RINGLET 4	HUMESTON CHAPTER ONE	VG87	8
TROUTBECK	MR FRANK MATTINSON	TROUTBECK ARAGORN IRENE	BUCKHORN ACRES ARAGORN-RED		7
TROUTBECK	MR FRANK MATTINSON	TROUTBECK JEAN 2	KC ROSES CHATTER T RED		8
TROUTBECK	MR FRANK MATTINSON	TROUTBECK TOUCHDOWN INDIGO	ROSEDALE TOUCHDOWN-RED	GP83	7
WEST MOSSGIEL	R & R B CUNNINGHAM	WEST MOSSGIEL NORAH 92	WEST MOSSGIEL CLASS TALENT	EX92	7
WHITECROFT	J D & B F BROADLEY & SONS	WHITECROFT BROWN GIRL 9	WHITECROFT TRAFALGAR	VG88	9
WHITEGATE	MR IAN D PATRICK	GARRETT HALL JULIE 35	EAST CHURCH ROSS	EX94	11
WHITEGATE	MR IAN D PATRICK	GARRETT HALL JULIE 44	KNUTSFORD WHITE FLASH	EX91	9
WROUGHTON	MR MICHAEL WINDEL	WROUGHTON VADA	CHANGUE TRYST	EX92	6

## FEMALE CLASSIFICATIONS

Prefix	Owner/Breeder	Animal's Name	Sire	Class.	Lact.
Ardmore	Mr W John G Hunter	Ardmore Miranda 2	Mapleburn Remington	EX 94(4)	6
Ardmore	Mr W John G Hunter	Ardmore Janet 110	De La Plaine Prime	EX 92(2)	4
Ardmore	Mr W John G Hunter	Ardmore Tulip 68	Rosehill Blackthorn	EX 92(2)	4
Ardmore	Mr W John G Hunter	Ardmore Orphan 117	Nexus Dreamer	EX 91	3
Ardmore	Mr W John G Hunter	Ardmore Tulip 58	Ardmore Evergreen	EX 91(4)	7
Ardmore	Mr W John G Hunter	Ardmore Tulip 79	Rosehill Blackthorn	EX 90	3
Ardmore	Mr W John G Hunter	Ardmore Raid Gigi	Ardmore Air Raid	VG 87	1
Ardmore	Mr W John G Hunter	Ardmore Crocus 154	Ardmore Crown Napier	VG 86	1
Ardmore	Mr W John G Hunter	Ardmore Janet 134	Hunnington Mandella	VG 85	1
Atley Hill	Mr David Alderson	Atley Hill New Years Lady	Lagace Modem ET	EX 93(3)	6
Atley Hill	Mr David Alderson	Atley Hill Enigma Pamela	Ravenhill Enigma	EX 90	3

# FEMALE CLASSIFICATIONS

Prefix	Owner/Breeder	Animal's Name	Sire	Class.	Lact.
Autumn	Miss Courtney G Martin	Bigginvale Apple Blossom 10	Mccornick Navigator	EX 92(4)	7
Autumn	Miss Courtney G Martin	East Church Buccaneers Patsy	Brocklehill Buccaneer	EX 91(2)	6
Autumn	Miss Courtney G Martin	Golden Toivo Betty	Kilpison Toivo	EX 91(3)	6
Autumn	Miss Courtney G Martin	East Church Brooklyns Doris	Heydale Brooklyn	EX 90(2)	6
Autumn	Miss Courtney G Martin	East Church Ristourns Mary Lane	Lagace Ristourn	EX 90	6
Autumn	Miss Courtney G Martin	Marlbrook Mandarin Bertha	Kamouraska Mandarin	EX 90	4
Beechmount	Mr Robert Mcconnell	Craigtown Pearl 93	Ardmore Mercury	EX 94(2)	5
Beechmount	Mr Robert Mcconnell	Beechmount Marie Girl 6	Beechmount Tristan	EX 92(2)	4
Beechmount	Mr Robert Mcconnell	Beechmount Betty 2	Beechmount Tristan	EX 91	4
Beechmount	Mr Robert Mcconnell	Beechmount Polly 2	Lagace Ristourn	EX 91	5
Beechmount	Mr Robert Mcconnell	Haresfoot Pearl Punch	Auchensale Black Pearl	EX 91(2)	6
Beechmount	Mr Robert Mcconnell	Beechmount Marie Girl 8	Rosehill Mastercard	EX 90(2)	4
Beechmount	Mr Robert Mcconnell	Beechmount Marie Girl 11	Haresfoot Panache	VG 89	2
Beechmount	Mr Robert Mcconnell	Beechmount Marie Girl 15	Rosehill Mastercard	VG 87	1
Beechmount	Mr Robert Mcconnell	Beechmount Astral 8	Palmyra Tri-Star Burdette	VG 86	1
Beechmount	Mr Robert Mcconnell	Beechmount Ethel 15	D'Albanel Marlow	VG 86	1
Beechmount	Mr Robert Mcconnell	Beechmount Pearl 2	Ravenhill Steadfast	VG 86	1
Beechmount	Mr Robert Mcconnell	Beechmount Marie Girl 14	Rosehill Mastercard	VG 85	1
Beechmount	Mr Robert Mcconnell	Beechmount Punch 3	De La Plaine Prime	VG 85	1
Beechmount	Mr Robert Mcconnell	Beechmount Raindrop	Rosehill Mastercard	VG 85	1
Beeline	Messrs S N Bailey & Partners	Beeline Dai	Middle Red Emerald	EX 92(2)	7
Beeline	Messrs S N Bailey & Partners	Beeline Star Crummie	Hunnington Kellogg Star	EX 92(2)	7
Beeline	Messrs S N Bailey & Partners	Morwick Jot Mitzy	Jotan Red	EX 92(3)	5
Beeline	Messrs S N Bailey & Partners	Beeline Classic Pansy	Poos Stadel Classic	EX 91	3
Beeline	Messrs S N Bailey & Partners	Beeline Lottery Jade	Galaxy Durham Lottery Red	EX 91	3
Beeline	Messrs S N Bailey & Partners	Beeline Swiss Thyme	Brieryside Lucky Swiss	EX 91	3
Beeline	Messrs S N Bailey & Partners	Beeline Lottery Bluebell	Galaxy Durham Lottery Red	EX 90	3
Beeline	Messrs S N Bailey & Partners	Beeline Savard Senior	Savard Red	EX 90	3
Beeline	Messrs S N Bailey & Partners	Beeline Star Jade	Hunnington Kellogg Star	EX 90	7
Beeline	Messrs S N Bailey & Partners	Beeline Swiss Girl	Brieryside Lucky Swiss	EX 90	3
Beeline	Messrs S N Bailey & Partners	Beeline Swiss Pansy	Brieryside Lucky Swiss	EX 90	3
Beeline	Messrs S N Bailey & Partners	Beeline Eiffel Kathie	Forever Schoon Eiffel	VG 86	1
Beeline	Messrs S N Bailey & Partners	Beeline Eiffel Mdm	Forever Schoon Eiffel	VG 86	1
Beeline	Messrs S N Bailey & Partners	Beeline Isor Tracy 2	Schrage Acme Isor Red	VG 86	1
Beeline	Messrs S N Bailey & Partners	Beeline Jumper Tess	Lessard Jumper	VG 86	1
Beeline	Messrs S N Bailey & Partners	Beeline Opportunity Jade	Faucher Opportunity	VG 86	1
Beeline	Messrs S N Bailey & Partners	Beeline Adonis Rhona	Luck-E Adonis-Red	VG 85	1
Beeline	Messrs S N Bailey & Partners	Beeline Ikar Jasmin	Schrage Remedy Ikar	VG 85	1
Beeline	Messrs S N Bailey & Partners	Beeline Ikar Louise	Schrage Remedy Ikar	VG 85	1
Beeline	Messrs S N Bailey & Partners	Beeline Isor Flora	Schrage Acme Isor Red	VG 85	1
Beeline	Messrs S N Bailey & Partners	Beeline Opportunity Mitzy	Faucher Opportunity	VG 85	1
Beeline	Messrs S N Bailey & Partners	Beeline Rockstar Mary	Kamouraska Rockstar	VG 85	1
Beeline	Messrs S N Bailey & Partners	Beeline Rubens Shortie	Stbvq Rubens	VG 85	1
Beeline	Messrs S N Bailey & Partners	Beeline Supreme Senior	Sandyford Supreme	VG 85	1
Biddesden	Biddesden Farm Partnership	Bailiffscourt Hortense 267	Horseclose Jubilee	EX 93(2)	9
Bigginvale	M/s R T & J I Adams	Bigginvale Cherryshine 133	Dudley Wood Major	EX 91	3
Bigginvale	M/s R T & J I Adams	Bigginvale Becky 8	Dudley Wood Major	EX 90	4
Bigginvale	M/s R T & J I Adams	Bigginvale Buttermilk 81	East Church Ambition	EX 90	10
Bigginvale	M/s R T & J I Adams	Bigginvale Buttermilk 95	Auchensale Black Pearl	EX 90	4
Bigginvale	M/s R T & J I Adams	Bigginvale Myrtle	Jelyca Oblique	EX 90	4
Bigginvale	M/s R T & J I Adams	Hunnington Naomi 3	Hunnington Admiral	EX 90	4
Bigginvale	M/s R T & J I Adams	Bigginvale Buttermilk 104	Sandyford Triclo	VG 86	1
Brackley	Messrs William & Philip Kelly	Brackley Joy 5	Lagace Modem ET	EX 93(4)	7
Brackley	Messrs William & Philip Kelly	Brackley Guinivere 12	Ardmore DeeJay	EX 91(2)	6
Brackley	Messrs William & Philip Kelly	Brackley Guinivere 9	Ardmore DeeJay	EX 91(3)	7
Brackley	Messrs William & Philip Kelly	Brackley Faith 9	Des Prairies Potter	EX 90	3
Brackley	Messrs William & Philip Kelly	Brackley Guinivere 14	Mccornick Navigator	EX 90	5
Brackley	Messrs William & Philip Kelly	Brackley Rose 17	Hunnington Mandella	EX 90	4



# FEMALE CLASSIFICATIONS

Prefix	Owner/Breeder	Animal's Name	Sire	Class.	Lact.
Brackley	Messrs William & Philip Kelly	Brackley Tulip 9	Ravenhill Story	EX 90(2)	5
Brackley	Messrs William & Philip Kelly	Brackley Zara 62	Hunnington Mandella	EX 90	4
Brackley	Messrs William & Philip Kelly	Brackley Zara 68	Ravenhill Fragmin	EX 90	3
Brackley	Messrs William & Philip Kelly	Brackley Ethel 24	Hilltown Oblique	VG 86	1
Butterbesley	Messrs R & A Cornish	Butterbesley Sparkle Hilary	Grandage Bright Spark	EX 92	3
Butterbesley	Messrs R & A Cornish	Butterbesley Viobull Sarah	Butterbesley Viobull	EX 92	3
Butterbesley	Messrs R & A Cornish	East Church Tommys Blissfull	East Church Tomahawk	EX 92(3)	7
Butterbesley	Messrs R & A Cornish	Hilltown Snowball 814	Changue Headmaster	EX 91	5
Butterbesley	Messrs R & A Cornish	Butterbesley Destination Betty	Bigginvale Destination	EX 90	3
Butterbesley	Messrs R & A Cornish	Oathall Rustic Milkmaid 8	Auchensale Special Trust	EX 90	5
Butterbesley	Messrs R & A Cornish	Butterbesley Obliques Toffee Maker	Hilltown Oblique	VG 85	1
Calderglen	M/s J & M Barr	Calderglen Raffia	Calderglen Lancelot	EX 94(6)	10
Calderglen	M/s J & M Barr	Calderglen Saffron	Calderglen Lancelot	EX 92(2)	8
Calderglen	M/s J & M Barr	Calderglen Emblem 2	Calderglen Tarbert Ranger	EX 91	3
Calderglen	M/s J & M Barr	Calderglen Forsythia 2	Calderglen Raffias Commander	VG 86	1
Caldervale	M/s W S Millar & Son	Caldervale June 44	Caldervale Crown Prince	EX 90	4
Caldervale	M/s W S Millar & Son	Caldervale Bella 2	Lessard Jumper	VG 86	1
Caldervale	M/s W S Millar & Son	Caldervale June 60	Kamouraska Rockstar	VG 85	1
Carsenaw	M/s Charles Service & Co Ltd	Carsenaw Eunice 68	Willsbro Red Razzle	EX 91	6
Carsenaw	M/s Charles Service & Co Ltd	Carsenaw Kirsty 54	West Mossgiel Modern Reality	EX 90	4
Carsenaw	M/s Charles Service & Co Ltd	Carsenaw Lucy 3	Holmland Saturn Red	EX 90	3
Carsenaw	M/s Charles Service & Co Ltd	Carsenaw Tilly	Palmyra Tri-Star Burdette	VG 86	1
Castledale	Mr Gavin Stockdale	Castledale Ethel 3	Green Lane World Leader	EX 91	3
Catcraig	Messrs J & A Brown	Changue Mirabelle 20	Changue Stadium	EX 93	7
Catcraig	Messrs J & A Brown	Ballygreggan Bolt Sheila	Aghavilly Bolt Red	EX 91	4
Clynmelyn	Mr D B & Mrs C A Walters	Clynmelyn Jurist Rachel	Auchensale B L Jurist	EX 90	4
Clynmelyn	Mr D B & Mrs C A Walters	Clynmelyn Larkrise Penelope	Millford Larkrise	EX 90	4
Coombe	Mr Brian Coombe	Combebow Polka Dot 4	West Mossgiel Lord Of The Ring	EX 91(2)	9
Cotonhall	Mr Robert Kite	Cotonhall Riggins Ovoid	Palmyra Poker Riggins ET	EX 93(3)	5
Cottown	Mr John Drummond	Cottown Emma 7	Lagace Ristourn	EX 94(5)	7
Cottown	Mr John Drummond	Cottown Ruth 16	Lagace Ristourn	EX 93(3)	6
Cottown	Mr John Drummond	Cottown Prime Natasha	De La Plaine Prime	EX 92	4
Cottown	Mr John Drummond	Cottown Quest Kate	Ballynahone Hectors Quest	EX 91(2)	4
Cottown	Mr John Drummond	Cottown Riggins Hollie 2	Palmyra Poker Riggins ET	EX 91(2)	5
Cottown	Mr John Drummond	Cottown Rose 7	Humeston Top Yield	EX 91(4)	8
Cottown	Mr John Drummond	Cottown Jarvis Rachel	Cottown Jarvis	EX 90	3
Cottown	Mr John Drummond	Cottown KR Emma	Cottown Knight Rider	VG 86	1
Cottown	Mr John Drummond	Cottown Prime Jessie	De La Plaine Prime	VG 86	1
Cottown	Mr John Drummond	Cottown Mandarin Lola	Kamouraska Mandarin	VG 85	1
Craigtown	M/s Irwin Bros	Craigtown Lady 16	Ravenhill Quantative	VG 85	1
Cuthill Towers	M/s A & S Lawrie	Cuthill Towers Radar Ray 16	Lagace Ristourn	EX 94(3)	5
Cuthill Towers	M/s A & S Lawrie	Cuthill Towers Snowdrop	Twemlow Major Threat	EX 92(2)	7
Cuthill Towers	M/s A & S Lawrie	Cuthill Towers Classy Lady	Poos Stadel Classic	EX 91(2)	4
Cuthill Towers	M/s A & S Lawrie	Cuthill Towers Ristourn Bertie	Lagace Ristourn	EX 91(2)	4
Cuthill Towers	M/s A & S Lawrie	Cuthill Towers Swan 47	Ja-bob Jordan Red	EX 91(3)	7
Cuthill Towers	M/s A & S Lawrie	Cuthill Towers Classic Rae	Poos Stadel Classic	EX 90	3
Cuthill Towers	M/s A & S Lawrie	Cuthill Towers Elpaso Daisy	Cuthill Towers Elpaso	EX 90	3
Cuthill Towers	M/s A & S Lawrie	Cuthill Towers Sabrina 29	Lagace Ristourn	EX 90	5
Cuthill Towers	M/s A & S Lawrie	Cuthill Towers Mad Rae	Cuthill Towers Madison	VG 87	1
Cuthill Towers	M/s A & S Lawrie	Cuthill Towers Miss Blondie 4	Hilltown Oblique	VG 86	1
Cuthill Towers	M/s A & S Lawrie	Cuthill Towers Miss Rubble	Cuthill Towers Barney Rubble	VG 86	1

# FEMALE CLASSIFICATIONS

Prefix	Owner/Breeder	Animal's Name	Sire	Class.	Lact.
Cuthill Towers	M/s A & S Lawrie	Cuthill Towers Pretty Ray 2	Forever Schoon Predator	VG 86	1
Cuthill Towers	M/s A & S Lawrie	Cuthill Towers Primetime Linzy	Gwynnog Primetime	VG 86	1
Cuthill Towers	M/s A & S Lawrie	Cuthill Towers Classic Snowdrop	Poos Stadel Classic	VG 85	1
Cuthill Towers	M/s A & S Lawrie	Cuthill Towers Elliot Matilda	Cuthill Towers Elliot	VG 85	1
Cuthill Towers	M/s A & S Lawrie	Cuthill Towers Harrys Crummie 2	Cuthill Towers Harry P	VG 85	1
Cuthill Towers	M/s A & S Lawrie	Cuthill Towers Primetime Peggy	Gwynnog Primetime	VG 85	1
Cuthill Towers	M/s A & S Lawrie	Cuthill Towers Rubble Irene	Cuthill Towers Barney Rubble	VG 85	1
Davidsons	Mr Craig Davidson	Davidsons Gay Panache	Haresfoot Panache	EX 90	4
Drumport	Mr A Porter	Drumport Brekem Donna	Swissbec Brekem	VG 85	1
East Drumlemble	Mr W Ralston	East Drumlemble Banquet 32	East Drumlemble Jackpot	EX 90	3
East Drumlemble	Mr W Ralston	East Drumlemble Jana 10	Delta Fidelity	VG 86	1
East Drumlemble	Mr W Ralston	East Drumlemble Sun silk 7	Delta Fidelity	VG 86	1
East Drumlemble	Mr W Ralston	East Drumlemble Jinnie 29	Delta Fidelity	VG 85	1
East Drumlemble	Mr W Ralston	East Drumlemble Una 8	Delta Fidelity	VG 85	1
Edendale	Miss Suzanne Nuttall	Bruchag White Julia	Stamford Triple Threat	EX 93(2)	8
Edendale	Miss Suzanne Nuttall	Edendale Oblique Jenny	Jelyca Oblique	EX 91(2)	6
Edendale	Miss Suzanne Nuttall	Edendale Jet Shamrock	Fradon Jet-Red	EX 90	7
Edendale	Miss Suzanne Nuttall	Edendale Oblique Orbit	Jelyca Oblique	EX 90(2)	6
Fortfield	Mr Raymond Stewart	Fortfield Kate 43	Brocklehill Major	EX 93(3)	9
Fortfield	Mr Raymond Stewart	Fortfield Kate 34	West Mossgiel Vegas	EX 91	9
Fortfield	Mr Raymond Stewart	Fortfield Amanda	Cuthill Towers Romeo	EX 90	5
Garthland	John McColm Ltd	Garthland Carole	Ardmore Crown Napier	VG 86	1
Glenmuir	Messrs J & A Struthers	Glenmuir Sentinel Emma	Bilsrow Sentinel	EX 93(2)	4
Glenmuir	Messrs J & A Struthers	Syke Glencairn Lolita	Ardmore Crown Napier	EX 93(2)	5
Glenmuir	Messrs J & A Struthers	Glenmuir Glencairn Conchita	Jelyca Oblique	EX 91(2)	4
Glenmuir	Messrs J & A Struthers	Glenmuir Oblique Lintie	Jelyca Oblique	EX 91(2)	4
Glenmuir	Messrs J & A Struthers	Glenmuir Oblique Pansy 2	Jelyca Oblique	EX 91(3)	5
Grove	Mr Thomas Gordon	Grove Dusk 3	Auchensale Star Performer	EX 92(2)	5
Grove	Mr Thomas Gordon	Grove Erinus 23	Lagace Ristourn	EX 91	3
Grove	Mr Thomas Gordon	Grove Buttercup 20	Carnell Bright Crown	EX 90	4
Grove	Mr Thomas Gordon	Grove Crocus 17	Cottown Hercules	VG 86	1
Grove	Mr Thomas Gordon	Grove Jasmine 23	Cottown Hercules	VG 86	1
Grove	Mr Thomas Gordon	Grove Narcissus 27	Cottown Hercules	VG 85	1
Grove	Mr Thomas Gordon	Grove White Dewdrop 15	Cottown Hercules	VG 85	1
Gwynnog	Mr G R Thomas	Gwynnog Liam Linnet	Gwynnog Liam	EX 93(3)	5
Gwynnog	Mr G R Thomas	Gethwen Napier Ella	Ardmore Crown Napier	EX 92	4
Gwynnog	Mr G R Thomas	Gwynnog Primetime Sandy Rose 2	Gwynnog Primetime	VG 85	1
Halmyre Urr	M/s L Davidson & Sons	Halmyre Urr Mayflower 240	Halmyre Urr Pinsent	EX 96(4)	7
Halmyre Urr	M/s L Davidson & Sons	Ballygreggan Jura 8	Cuthill Towers Romeo	EX 91	6
Halmyre Urr	M/s L Davidson & Sons	Halmyre Urr Jinks 509	Halmyre Urr Lieutenant	EX 91	3
Halmyre Urr	M/s L Davidson & Sons	Halmyre Urr Ladybird 466	Jelyca Oblique	EX 91(2)	4
Halmyre Urr	M/s L Davidson & Sons	Halmyre Urr Louise 254	Palmyra Tri-Star Reality	EX 91(2)	5
Halmyre Urr	M/s L Davidson & Sons	Halmyre Urr Louise 283	Palmyra Tri-Star Burdette	EX 91(3)	5
Halmyre Urr	M/s L Davidson & Sons	Halmyre Urr Louise 260	Palmyra Tri-Star Reality	EX 90(2)	6
Halmyre Urr	M/s L Davidson & Sons	Halmyre Urr Louise 277	Haresfoot Elegant	EX 90	5
Halmyre Urr	M/s L Davidson & Sons	Halmyre Urr Fancy Girl 85	Gwynnog Primetime	VG 87	1
Halmyre Urr	M/s L Davidson & Sons	Halmyre Urr Jinks 558	Halmyre Urr Lieutenant	VG 85	1
Halmyre Urr	M/s L Davidson & Sons	Halmyre Urr Louise 343	Cuthill Towers Brad Pitt	VG 85	1
Harperfield	Firm Of D M Lindsay	Barr Sandy Rose 56	Barr Aviator	EX 95(4)	8
Harry's	Master Harry Bolderston	Harry's Blackjack Primrose 2	Palmyra Calimero Blackjack	VG 87	1

# FEMALE CLASSIFICATIONS

Prefix	Owner/Breeder	Animal's Name	Sire	Class.	Lact.
Heydale	M/s D W Berresford & Son	Heydale Winsome 114	Heydale Montrose	EX 95(6)	9
Heydale	M/s D W Berresford & Son	Heydale Winsome 109	Kellcrest Ice Man	EX 94(9)	11
Heydale	M/s D W Berresford & Son	Heydale Plaine Jayne	De La Plaine Prime	EX 93(2)	4
Heydale	M/s D W Berresford & Son	Heydale Ovoid 298	Heydale Wilderness	EX 90(3)	7
Heydale	M/s D W Berresford & Son	Heydale Ovoid 344	Heydale Windfall	EX 90	3
Heydale	M/s D W Berresford & Son	Heydale Ovoid 371	Palmyra Tri-Star Burdette	VG 87	1
Heydale	M/s D W Berresford & Son	Heydale LL Zinnia	Libby's Lochinvar	VG 85	1
Hilltown	M/s Nicholls	Hilltown Violet 299	Rulesmains Border Clansman	EX 94(4)	6
Hilltown	M/s Nicholls	Hilltown Snowball 642	Margot Calimero	EX 93(8)	10
Hilltown	M/s Nicholls	Hilltown Snowball 712	Lagace Monaco	EX 93(5)	7
Hilltown	M/s Nicholls	Hilltown Snowball 724	Hawksfield Blue Sky	EX 93(3)	7
Hilltown	M/s Nicholls	Hilltown Snowball 836	Cuthill Towers Autumn Gold	EX 93(2)	4
Hilltown	M/s Nicholls	Hilltown Tulip 73	Palmyra Tri-Star Burdette	EX 93	5
Hilltown	M/s Nicholls	Hilltown Violet 246	Saguenayenne Kate Medalist	EX 93(4)	7
Hilltown	M/s Nicholls	Hilltown Gaylady 53	Lagace Modem Et	EX 92(5)	8
Hilltown	M/s Nicholls	Hilltown Judy	Hilltown Glacier	EX 92(3)	6
Hilltown	M/s Nicholls	Hilltown Julep 51 Th	Jelyca Oblique	EX 92(2)	6
Hilltown	M/s Nicholls	Hilltown Patricia 191	Hilltown Elegance	EX 92(4)	6
Hilltown	M/s Nicholls	Hilltown Star 445	Highway Billy Ruffian	EX 92(6)	8
Hilltown	M/s Nicholls	Hilltown Star 471	Lagace Ristourn	EX 92(5)	7
Hilltown	M/s Nicholls	Hilltown Star 530	Palmyra Tri-Star Burdette	EX 92	4
Hilltown	M/s Nicholls	Hilltown Violet 204	Hilltown Hijack	EX 92(5)	9
Hilltown	M/s Nicholls	Hilltown Gaylady 60	Changue Headmaster	EX 91	4
Hilltown	M/s Nicholls	Hilltown Patricia 175	Margot Calimero	EX 91(4)	8
Hilltown	M/s Nicholls	Hilltown Snowball 846	Brocklehill Happy Spirit	EX 91	4
Hilltown	M/s Nicholls	Hilltown Star 503	Lagace Ristourn	EX 91(2)	5
Hilltown	M/s Nicholls	Hilltown Star 508	Horseclose Einstein	EX 91	5
Hilltown	M/s Nicholls	Hilltown Star 514	Hilltown Glacier	EX 91	5
Hilltown	M/s Nicholls	Hilltown Tulip 75	Palmyra Tri-Star Burdette	EX 91(2)	5
Hilltown	M/s Nicholls	Hilltown Violet 197	Hunnington Admiral	EX 91(4)	8
Hilltown	M/s Nicholls	Hilltown Violet 200	Hunnington Admiral	EX 91(4)	9
Hilltown	M/s Nicholls	Hilltown Violet 221	Hilltown Galaxy	EX 91(3)	8
Hilltown	M/s Nicholls	Hilltown Violet 351	Palmyra Tri-Star Burdette	EX 91	4
Hilltown	M/s Nicholls	Hilltown Judy 2	Horseclose Einstein	EX 90	5
Hilltown	M/s Nicholls	Hilltown Patricia 209	Palmyra Tri-Star Burdette	EX 90	3
Hilltown	M/s Nicholls	Hilltown Snowball 670	Hilltown Laddie	EX 90	8
Hilltown	M/s Nicholls	Hilltown Snowball 721	Green Lane Marshall	EX 90(5)	7
Hilltown	M/s Nicholls	Hilltown Snowball 784	Pant Leading Light	EX 90	6
Hilltown	M/s Nicholls	Hilltown Snowball 839	Auchenflower Statesman	EX 90	4
Hilltown	M/s Nicholls	Hilltown Snowball 887	Kamouraska Rockstar	EX 90	3
Hilltown	M/s Nicholls	Hilltown Star 529	Halmyre Urr Vice Consul	EX 90	5
Hilltown	M/s Nicholls	Hilltown Violet 307	Jelyca Oblique	EX 90(3)	6
Hilltown	M/s Nicholls	Hilltown Violet 312	Kellcrest Avenger	EX 90	5
Hilltown	M/s Nicholls	Hilltown Violet 320	Changue Headmaster	EX 90(2)	5
Hilltown	M/s Nicholls	Hilltown Violet 326	Hilltown Glacier	EX 90	5
Hilltown	M/s Nicholls	Hilltown Violet 360	Hilltown Musketeer	EX 90	4
Hilltown	M/s Nicholls	Hilltown Star 582	Hilltown Highwayman	VG 86	1
Hilltown	M/s Nicholls	Hilltown Belle 128	Dilham Drifter	VG 85	1
Hilltown	M/s Nicholls	Hilltown Patricia 231	Hilltown Harvestime	VG 85	1
Hilltown	M/s Nicholls	Hilltown Patricia 232	Hilltown Optimism	VG 85	1
Hilltown	M/s Nicholls	Hilltown Snowball 937	Palmyra Calimero Blackjack	VG 85	1
Hilltown	M/s Nicholls	Hilltown Violet 450	Hilltown Einsteins Regard	VG 85	1
Hunnington	L & C Window	Hunnington Easled 6	Hunnington Admiral	EX 92(4)	9
Hunnington	L & C Window	Hunnington Easled 9	Blackaddar B B Kellogg	EX 92(2)	8
Hunnington	L & C Window	Hunnington Fragy 17	Cheshire View Magnum	EX 92(2)	4
Hunnington	L & C Window	Hunnington Fragrance 60	Dudley Wood Baldrick	EX 91(3)	6
Hunnington	L & C Window	Hunnington Lilly 18	Cheshire View Magnum	EX 91	3
Hunnington	L & C Window	Hunnington Naomi 2	Hunnington Brosman	EX 91	5
Hunnington	L & C Window	Hunnington Sailor Girl 139	Cheshire View Magnum	EX 91	4
Hunnington	L & C Window	Hunnington Easled 18	Haresfoot Brazen	EX 90	3
Hunnington	L & C Window	Hunnington Rosepetal 3	Hunnington Mandella	EX 90	4

# FEMALE CLASSIFICATIONS

Prefix	Owner/Breeder	Animal's Name	Sire	Class.	Lact.
Hunnington	L & C Window	Hunnington Napier Annabelle	Ardmore Crown Napier	VG 87	1
Hunnington	L & C Window	Hunnington Tornado Fragy	Castern Tornado	VG 87	1
Hunnington	L & C Window	Hunnington Joybell 91	Hunnington Admiral	VG 86	1
Hunnington	L & C Window	Hunnington Astral Maid 8	Blackaddar B B Kellogg	VG 85	1
Hunnington	L & C Window	Hunnington Myrtle 9	Stamford Witness	VG 85	1
Hunnington	L & C Window	Hunnington Rosepetal 6	Hunnington Admiral	VG 85	1
Inch	Messrs James Morrison & Son	Inch Crone Onska	VR Crone	VG 85	1
Inch	Messrs James Morrison & Son	Inch Porter Dawn	VR Porter	VG 85	1
Keir Mains	Mrs M Young & Sons	Keir Mains Gladness 45	Rosehill Manderville	VG 86	1
Keir Mains	Mrs M Young & Sons	Keir Mains Gladness 43	Rosehill Manderville	VG 85	1
Keir Mains	Mrs M Young & Sons	Keir Mains Vespa 78	Sandyford Triclo	VG 85	1
Kirkinriola	M/s Robert & Martin King	Kirkinriola BB Cindy 2	Brocklehill Buccaneer	EX 94(3)	6
Kirkinriola	M/s Robert & Martin King	Kirkinriola AAC Spangle	Attwell Acorn	EX 91(3)	5
Kirkinriola	M/s Robert & Martin King	Kirkinriola PCB Joy	Palmyra Calimero Blackjack	VG 85	1
Lakeland	Mr Robert A Watterson	Lakeland Princess 9	Green Lane World Leader	EX 91(2)	6
Lakeland	Mr Robert A Watterson	Lakeland Martha 4	Haresfoot Elegant	EX 90	5
Lakeland	Mr Robert A Watterson	Lakeland Bilberry 2	Lakeland Royal Ambassador	VG 85	1
Langside	M/s A Gray & Son	Langside Anne 29	Langside Gold Major	EX 91	4
Langside	M/s A Gray & Son	Langside Bella 23	Barr Chancer	EX 91	5
Langside	M/s A Gray & Son	Langside Ninette 33	Abs Roscoe Red	EX 91	5
Langside	M/s A Gray & Son	Langside Beauty 95	Rosedale Advantage-Red	EX 90	7
Langside	M/s A Gray & Son	Langside Bloomer 294	Wyndford Bd Appleman Red	VG 85	1
Lessnessock	Adam W Montgomerie	Lessnessock Reality Rose Dust	Palmyra Tri-Star Reality	EX 93(3)	5
Lessnessock	Adam W Montgomerie	Sandyford Vitality Queenie	Rosehill Vitality	EX 91	3
Lessnessock	Adam W Montgomerie	Bruchag SS Caroline	Bruchag Starman	VG 86	1
Lessnessock	Adam W Montgomerie	Bruchag Starman Jewel Queen	Bruchag Starman	VG 85	1
Lilylane	Lilylane Farms Ltd	Sandyford Max Black Diamond	Sandyford Maximillion	EX 91(2)	4
Longwood	T Crawford & Co Ltd	Longwood Dreamer Eunice 2	Nexus Dreamer	VG 85	1
Low Semple	Mr Alan J Steel	Low Semple Jem	Low Semple J Star	EX 92(3)	7
Low Semple	Mr Alan J Steel	Low Semple Poppet	Rosehill Blackthorn	EX 90	6
Low Semple	Mr Alan J Steel	Low Semple Princess 35	East Church Patrolman	EX 90	3
Madjeston	Mr Richard Pike	Hitcham Mandy 63	Haresfoot Blaze	EX 92	7
Madjeston	Mr Richard Pike	Brieryside Stadel Pricilla	Poos Stadel Classic	EX 91	6
Madjeston	Mr Richard Pike	Madjeston Panache Rita 2	Haresfoot Panache	EX 91	4
Madjeston	Mr Richard Pike	Madjeston Oblique Rose	Hiltown Oblique	EX 90	3
Madjeston	Mr Richard Pike	Madjeston Panache Pansy	Haresfoot Panache	EX 90	4
Madjeston	Mr Richard Pike	Madjeston Panache Pear	Haresfoot Panache	EX 90	4
Madjeston	Mr Richard Pike	Madjeston Panache Rita	Haresfoot Panache	EX 90	3
Madjeston	Mr Richard Pike	Madjeston Popeye Holway	Vortex Popeye	EX 90	6
Mair's	Mr Colin Mair	Mair's Artie Tulip	Greenlea Artie - Red	EX 91	3
Mair's	Mr Colin Mair	Mair's Robbie Rhoda	Mairs Robbie	EX 90	3
Mair's	Mr Colin Mair	Muirside Wren 45	Carnell Pure Talent	EX 90(2)	4
Marleycote	Messrs G G Baynes & Son	Marleycote Brown Nell 20	Palmyra Tri-Star Burdette	EX 94(4)	5
Megarose	Megan Stratton	Megarose Hiphip Hooray	Jelyca Oblique	VG 85	1
Melba-rose	Miss Deborah J Christophers	Rosehill. Mocha Choca	Jelyca Oblique	EX 92(2)	5
Melba-rose	Miss Deborah J Christophers	Rosehill. Madrids Hope	Kilpison Toivo	EX 90	5
Menadue	Mr J A J Pearce	Menadue Wind Chime 13	Wroughton Lord Winston	EX 92(2)	5
Menadue	Mr J A J Pearce	Menadue Mad Hattie 10	Gunnarstorp	EX 91(2)	6

# FEMALE CLASSIFICATIONS

Prefix	Owner/Breeder	Animal's Name	Sire	Class.	Lact.
Millford	M/s G Timbrell & Son	Millford Lark 32	Mccornick Nelson	EX 93(3)	6
Millford	M/s G Timbrell & Son	Millford Lark 38	Palmyra Tri-Star Burdette	EX 90	5
Moathouse	Mr Richard Danforth	Moathouse Adrienne 5	Haresfoot Elegant	EX 91(2)	4
Moathouse	Mr Richard Danforth	Halmyre Urr Mayflower 271	Halmyre Urr Hunters Joe	EX 90	4
Moathouse	Mr Richard Danforth	Moathouse Adrienne 16	Whitecroft Furtado	VG 86	1
Morwick	Michael Howie	Morwick Beacon Emerald	Lillyhall Beacon Red	EX 90	4
Morwick	Michael Howie	Morwick Lord P Queen	Lord Red P	VG 86	1
Morwick	Michael Howie	Morwick Merissa 13	Duo Star Gentleman	VG 86	1
Morwick	Michael Howie	Morwick Sandra 92	Morwick Prince Rocky	VG 86	1
Morwick	Michael Howie	Morwick Gwen 31	Kamouraska Rockstar	VG 85	1
Mossburnhill	Mr Robert Fleming	Mossburnhill Rosemary 16	Brieryside New Proof	EX 92	7
Mossburnhill	Mr Robert Fleming	Mossburnhill Shannon 26	Hunnington Warrior	VG 85	1
New Close	M/s H & J E Watson	New Close Belinda 34	Ardmore Crown Napier	EX 91	6
New Close	M/s H & J E Watson	New Close Linnet 68	Hilltown Oblique	VG 86	1
Pam Ayrs	J Pollard & D Coryn	Pam Ayrs Hawaii Five-0	Family-AF-Ayr Poker Duncan	EX 93(2)	4
Parks	Messrs D & M Mackenzie	Crailloch Marge	Green Lane Prodigy	EX 91	5
Priestland	Mrs J Mclean	Craigtown Irene 140	Ardmore Mercury	EX 94	6
Priestland	Mrs J Mclean	Garthland Ring	Garthland Glorious	EX 92(4)	6
Priestland	Mrs J Mclean	Sandyford Real Punch	Palmyra Tri-Star Reality	EX 90	3
Ravenhill	Mr John Suffern	Oakfield Gigi 7	Stamford Henrik	EX 95(3)	6
Ravenhill	Mr John Suffern	Ravenhill Ethel 518	Rosehill Blackthorn	EX 94(4)	6
Ravenhill	Mr John Suffern	Ravenhill Ethel 505	Mapleburn Remington	EX 93(4)	6
Ravenhill	Mr John Suffern	Craigtown Sarah 34	Ardmore Mercury	EX 91	6
Ravenhill	Mr John Suffern	Ravenhill Ethel 344	Ravenhill Quandary	EX 91(9)	13
Ravenhill	Mr John Suffern	Ravenhill Ethel 549	Changue Tryst	EX 91(2)	4
Ravenhill	Mr John Suffern	Ravenhill Ethel 570	Ballyclan First Command	EX 91	3
Ravenhill	Mr John Suffern	Ravenhill Ethel 547	Changue Tryst	EX 90(2)	4
Ravenhill	Mr John Suffern	Ravenhill Ethel 562	Ardmore Evening Star	EX 90	4
Ravenhill	Mr John Suffern	Ravenhill Ethel 568	Terrace Bank Free Beer	EX 90	3
Ravenhill	Mr John Suffern	Ravenhill Ethel 585	Ballygrainey Realist	EX 90	3
Ravenhill	Mr John Suffern	Ravenhill May 77	Terrace Bank Free Beer	EX 90(2)	4
Ravenhill	Mr John Suffern	Ravenhill Snowgem 82	Ravenhill Europa	EX 90	4
Ravenhill	Mr John Suffern	Willowfields Conceit 6	West Mossgiel Modern Reality	EX 90(2)	4
Ravenhill	Mr John Suffern	Ravenhill Energise Snowgem 2	Ravenhill Energise	VG 86	1
Rhos	Mr S P R & Mrs L Reed	Sandyford Dreamy Bella	Nexus Dreamer	EX 93(2)	4
Rhos	Mr S P R & Mrs L Reed	Rhos Gettysburg Valerie	Davidsons Gettysburg	EX 92	4
Rhos	Mr S P R & Mrs L Reed	Rhos Reality Sally	Palmyra Tri-Star Reality	EX 92(2)	5
Rhos	Mr S P R & Mrs L Reed	Heydale Ovoid 338	Palmyra Tri-Star Burdette	EX 91(2)	4
Rhos	Mr S P R & Mrs L Reed	Rhos Langton Elmannette	Rhos Langton Royal Lad	EX 91(2)	5
Rhos	Mr S P R & Mrs L Reed	Rhos Hum Emilia	Rhos Humphrey Potter	EX 90	3
Rhos	Mr S P R & Mrs L Reed	Rhos Pylon Alivalley Ristourn	Lagace Ristourn	EX 90	4
Rhos	Mr S P R & Mrs L Reed	Rhos Cacyked Dancer	La Sapiniere Cacyked	VG 87	1
Rhos	Mr S P R & Mrs L Reed	Rhos Cacyked Misty	La Sapiniere Cacyked	VG 87	1
Rhos	Mr S P R & Mrs L Reed	Rhos Gentle Fairy	Duo Star Gentleman	VG 86	1
Rhos	Mr S P R & Mrs L Reed	Rhos Gentle Barbara	Duo Star Gentleman	VG 85	1
Rhos	Mr S P R & Mrs L Reed	Rhos Pamreality Lottie	Rhos Pamelas Reality	VG 85	1
Rhos	Mr S P R & Mrs L Reed	Rhos Romeo Mandy	Cuthill Towers Romeo	VG 85	1
Rosehill	M/s W R C & J E Christophers	Rosehill Beano	Covey-Farms Reno	EX 94(6)	9
Rosehill	M/s W R C & J E Christophers	Rosehill Perdy Bouquet	Lashburn Jeopardy	EX 94(3)	5
Rosehill	M/s W R C & J E Christophers	Rosehill Viagra Primrose	Rosehill Viagra	EX 93(4)	7
Rosehill	M/s W R C & J E Christophers	Rosehill Salty Mags	Stevenson's Saltire	EX 92(3)	6
Rosehill	M/s W R C & J E Christophers	Rosehill Thorny Pamela	Rosehill Blackthorn	EX 92	4
Rosehill	M/s W R C & J E Christophers	Rosehill Just Brams	B Jurist	EX 91	3
Rosehill	M/s W R C & J E Christophers	Rosehill Lark-a-Jig	Rosehill Rhythmajig	EX 91(2)	6

# FEMALE CLASSIFICATIONS

Prefix	Owner/Breeder	Animal's Name	Sire	Class.	Lact.
Rosehill	M/s W R C & J E Christophers	Rosehill Toy Flamenco	Kilpison Toivo	EX 91	6
Rosehill	M/s W R C & J E Christophers	Gadles Fanny	Haresfoot Panache	EX 90(2)	4
Rosehill	M/s W R C & J E Christophers	Rosehill Amber Knees	Rosehill Bees Knees	EX 90	8
Rosehill	M/s W R C & J E Christophers	Rosehill Amber Stourn	Lagace Ristourn	EX 90(2)	5
Rosehill	M/s W R C & J E Christophers	Rosehill Crown Magenta	Ardmore Crown Napier	EX 90	3
Rosehill	M/s W R C & J E Christophers	Rosehill Jiggy Cider	Rosehill Rhythmajig	EX 90	5
Rosehill	M/s W R C & J E Christophers	Rosehill Perdy Sugar	Lashburn Jeopardy	EX 90	3
Rosehill	M/s W R C & J E Christophers	Rosehill Tornado Dolly	Castern Tornado	EX 90	4
Rosehill	M/s W R C & J E Christophers	Rosehill Premier Foxtrot	Rosehill Premier	VG 86	1
Rosehill	M/s W R C & J E Christophers	Rosehill Premier Magenta	Rosehill Premier	VG 86	1
Rosehill	M/s W R C & J E Christophers	Rosehill Premier Verylight	Rosehill Premier	VG 86	1
Rosehill	M/s W R C & J E Christophers	Rosehill Pans Silver	Haresfoot Panache	VG 85	1
Rosehill	M/s W R C & J E Christophers	Rosehill Premier Carnado	Rosehill Premier	VG 85	1
Rosehill	M/s W R C & J E Christophers	Rosehill Prospect Velour	Rosehill Prospect	VG 85	1
Rosehill	M/s W R C & J E Christophers	Rosehill Vital Magenta	Rosehill Vitality	VG 85	1
Ryecroft	M/s D & K Haworth	Ryecroft Curtis Dairy Queen 2	Apina Curtis	EX 92(2)	4
Sandersfarms	A J & S M Sanders	Sandersfarms Wright Frances	Gunnarstorp	VG 85	1
Sandyford	M/s E T Tomlinson & Son	Sandyford Flash Russet	Knutsford White Flash	EX 94(2)	5
Sandyford	M/s E T Tomlinson & Son	Sandyford Dark Hester 2	Sandyford Dark Knight	EX 92	3
Sandyford	M/s E T Tomlinson & Son	Sandyford Dark Fable	Sandyford Dark Knight	EX 91	3
Sandyford	M/s E T Tomlinson & Son	Sandyford Lucky Florrie	Sandyford Lucky Charm	EX 90	3
Sandyford	M/s E T Tomlinson & Son	Sandyford Marlow Clover 5	D'Albanel Marlow	VG 89	2
Sandyford	M/s E T Tomlinson & Son	Sandyford Prime Heather Honey	De La Plaine Prime	VG 89	2
Sandyford	M/s E T Tomlinson & Son	Sandyford Awesome Marsela	Luck-E Absolute Awesome Red	VG 87	1
Sandyford	M/s E T Tomlinson & Son	Sandyford Burdette Clover	Palmyra Tri-Star Burdette	VG 87	1
Sandyford	M/s E T Tomlinson & Son	Sandyford Supreme Fable 2	Sandyford Supreme	VG 85	1
Sandyford	M/s E T Tomlinson & Son	Sandyford Triclo Honey	Sandyford Triclo	VG 85	1
Sandyford	M/s E T Tomlinson & Son	Sandyford Vitality Fragrance	Rosehill Vitality	VG 85	1
Somerby	Messrs H N Barnes & Son	Blackrock Ladylake 142	Des Chamois Pat Laro	EX 91(3)	8
Somerby	Messrs H N Barnes & Son	Blackrock Missie 20	Hunnington Fragyson	EX 90	6
Sunrise	M/s Bostock Bros	Sunrise RR Elspeth	Rosehill Rhythmajig	EX 92(2)	5
Sunrise	M/s Bostock Bros	Knutsford Polly 39	Aalshorst Pleasure	EX 90	3
Sunrise	M/s Bostock Bros	Sunrise Bonnie Peggy	Dubthorne Burbon Red	EX 90	3
Sunrise	M/s Bostock Bros	Sunrise Jordan Delia	Ja-Bob Jordan Red	EX 90	4
Swaites	M/s John Adamson & Son	Swaites Margaret Ann 14	Schreur Ihlmano Red	EX 93(2)	6
Swaites	M/s John Adamson & Son	Swaites Nice Girl 14	Willsbro Red Razzle	EX 93(2)	4
Swaites	M/s John Adamson & Son	Swaites Bright Spark 5	Brieryside Red Centurian	EX 92	3
Swaites	M/s John Adamson & Son	Swaites Wallpocket	Des Prairies Potter	EX 92	4
Swaites	M/s John Adamson & Son	Swaites Binnie 8	West Spittal Regiment Red	EX 91(2)	5
Swaites	M/s John Adamson & Son	Swaites Buff 2	Haresfoot Panache	EX 91	4
Swaites	M/s John Adamson & Son	Swaites Dewdrop 10	Rosehill Rhythmajig	EX 91(2)	5
Swaites	M/s John Adamson & Son	Swaites Dilly 4	Des Prairies Potter	EX 91(2)	5
Swaites	M/s John Adamson & Son	Swaites Bubbles 5	Brieryside Red Centurian	EX 90	3
Swaites	M/s John Adamson & Son	Swaites Lorna 13	Swaites Duport	EX 90(2)	7
Swaites	M/s John Adamson & Son	Swaites Nice Girl 10	Marleycote Winton Robbie	EX 90	9
Swaites	M/s John Adamson & Son	Swaites Buddie 7	Ravenhill Stormin Norman	VG 86	1
Swaites	M/s John Adamson & Son	Swaites Nell 14	Visstein K & L Picasso Red	VG 86	1
Swaites	M/s John Adamson & Son	Swaites Nice Girl 18	Whitecroft Furtado	VG 86	1
Swaites	M/s John Adamson & Son	Swaites Beau 12	Swaites Dynamite	VG 85	1
Swaites	M/s John Adamson & Son	Swaites Bride 12	Swaites Nickle	VG 85	1
Trerose	Mr T R David Christophers	Trerose Burlesque	Rosehill Viagra	EX 91(2)	6
Trerose	Mr T R David Christophers	Trerose Ballet	Rosehill Real Mccoy	EX 90	4
Trerose	Mr T R David Christophers	Trerose Burd	Palmyra Tri-Star Burdette	VG 85	1
Tristar	Mr Christopher J Creeper	Tristar Burdette Sybil	Palmyra Tri-Star Burdette	EX 91	3
Tristar	Mr Christopher J Creeper	Tristar Platinum Jade	Tristar Platinum	VG 85	1

# FEMALE CLASSIFICATIONS

Prefix	Owner/Breeder	Animal's Name	Sire	Class.	Lact.
Wellhouse	Firm Of J M Howie	Wellhouse Eiffel Geordie Girl	Forever Schoon Eiffel	EX 90	3
Whitecroft	M/s J D & B F Broadley & Sons	Whitecroft Babs 27	Mccornick Navigator	EX 95(3)	10
Whitecroft	M/s J D & B F Broadley & Sons	Whitecroft Ruth 87	Saguenayenne Kate Medalist	EX 95(8)	12
Whitecroft	M/s J D & B F Broadley & Sons	Middle Dunlops Blend	Middle Dunlops Man	EX 94(6)	8
Whitecroft	M/s J D & B F Broadley & Sons	Whitecroft Margie	Haresfoot Elegant	EX 94(3)	6
Whitecroft	M/s J D & B F Broadley & Sons	Whitecroft Mary 13	Mccornick Nelson	EX 94(11)	14
Whitecroft	M/s J D & B F Broadley & Sons	Whitecroft Myra 28	Hunnington Mandella	EX 94(5)	10
Whitecroft	M/s J D & B F Broadley & Sons	Whitecroft Emmie 94	Mapleburn Remington	EX 93(2)	5
Whitecroft	M/s J D & B F Broadley & Sons	Whitecroft Emmie 102	Palmyra Tri-Star Burdette	EX 92(2)	4
Whitecroft	M/s J D & B F Broadley & Sons	Whitecroft Doreen 84	Whitecroft Edwin	EX 91(2)	5
Whitecroft	M/s J D & B F Broadley & Sons	Whitecroft Myra 30	Hilltown Oblique	EX 91(2)	4
Whitecroft	M/s J D & B F Broadley & Sons	Whitecroft Nellie 53	Cuthill Towers Autumn Gold	EX 91(2)	5
Whitecroft	M/s J D & B F Broadley & Sons	Whitecroft Ruth 128	Palmyra Tri-Star Burdette	EX 91(2)	5
Whitecroft	M/s J D & B F Broadley & Sons	Whitecroft Anna 77	Purolan Orkko	EX 90	4
Whitecroft	M/s J D & B F Broadley & Sons	Whitecroft Barbara 79	Ardmore Crown Napier	EX 90	4
Whitecroft	M/s J D & B F Broadley & Sons	Whitecroft Bella 35	Palmyra Tri-Star Burdette	EX 90(2)	5
Whitecroft	M/s J D & B F Broadley & Sons	Whitecroft Ruth 133	Haresfoot Panache	EX 90	4
Whitecroft	M/s J D & B F Broadley & Sons	Whitecroft Emerald 3	Hilltown Oblique	VG 86	1
Wigboro Wick	Mr John Smith	Acton Blackthorn Peggy	Rosehill Blackthorn	EX 92(3)	6
Wigboro Wick	Mr John Smith	Wigboro Wick Evolution Peggy	Rosehill Evolution	VG 89	2
Wroughton	Mr Michael Windel	Wroughton Sunshine	Wroughton Lord Winston	VG 85	1

# MALE CLASSIFICATIONS

Prefix	Owner/Breeder	Animal's Name	Sire	Class.
Beechmount	Mr Robert Mcconnell	Beechmount Jackal	Hunnington Mandella	VG 86
Caldervale	M/s W S Millar & Son	Priestland Paprika	Mapleburn Woodrow	EX 92
Caldervale	M/s W S Millar & Son	Caldervale Perfection	Haresfoot Simply Perfek	VG 87
Cuthill Towers	M/s A & S Lawrie	Calderglen Hard Rock	Cuthill Towers Harry P	VG 87
East Drumlemble	Mr W Ralston	East Drumlemble Joker	Tiger-Lily Ladd P-Red	EX 91
Kirkinriola	M/s Robert & Martin King	Kirkinriola Mc Laggan	Margot Calimero	EX 91
Luxulyan	Mr Richard Loud	Luxulyan Morgan	Maple-Dell Burdette Dempsey	VG 87
Mossburnhill	Mr Robert Fleming	Cochranes Purity	Lessard Jumper	EX 91
Whitecroft	M/s J D & B F Broadley & Sons	Whitecroft Manellie	Hunnington Mandella	VG 87

# TOP SIRES

by number of calves registered between 1st November 2018 - 28th February 2019

Sire	Number of registered calves
HILLTOWN OBLIQUE	94
MARBRAE BIGTIME	78
ROSEHILL VITALITY	44
SANDYFORD TRICLO	43
ROSEHILL MANDERVILLE	39
HUNNINGTON FAMOUS	35
RAVENHILL VICTORY	27
TROUTBECK SKYFALL	26
ARDMORE CROWN NAPIER	25
WEST MOSSGIEL MODERN REALITY	25

# New Future Sire

HEYDALE WHITE

# WILLOW

(HILLTOWN OBLIQUE X EX94 KELLCREST ICE MAN X  
EX92 BONNIE BRAE TUXEDO X EX92 BANKEND PHOTO FINISH)



## Grand Dam

HEYDALE WINSOME 97 EX92 4E LP80

## Dam

HEYDALE WINSOME 109 EX94 9E 9E LP80

Willow is bred from the wonderful Winsome family at Heydale.  
His 5 nearest dams are all scored VG or EX and average 74 tonnes of milk.  
The Winsome family is one of the best families in the breed that excel in longevity, production and health traits.

*We are delighted to offer SEXED ULTRA 4M SEMEN and conventional straws  
for World wide distribution.*

**For more details on HEYDALE WHITE WILLOW and the other great bulls in the  
Cattle Services Stud please visit the website.**

Contact: Sam Wake: 07803 515626 Office: 01292 471292  
Email: sales@cattleservices.org www.cattleservices.org

