

BaByliss[®] MEN



10 IN 1 TITANIUM MULTI TRIMMER

Model 7255U


SAFETY CAUTIONS

- This appliance should only be used as described within this instruction book. Please retain for reference.

IMPORTANT CHILD SAFETY

WARNING! Polythene bags over the product or packaging may be dangerous. To avoid danger of suffocation, keep away from babies and children. These bags are not toys.

IMPORTANT SAFETY

-  Do not immerse the appliance in water or other liquids.
- Always inspect the appliance before use for noticeable signs of damage. Do not use if damaged or if the appliance has been dropped. In the event of damage contact the Conair Customer Care Line (refer to UK After Sales Service section for further information).
- Only use the attachments supplied with this appliance.
- Do not leave the appliance unattended when switched on.
- Do not place the appliance on any surface whilst in operation.
- Special care is required when using the appliance close to the ears, eyes and face.
- This appliance should not be used by adults whose reduced physical, sensory or mental capabilities, or whose lack of experience and knowledge, might cause a hazard, unless they have been correctly instructed to understand the safe use and hazards involved and are adequately supervised.
- Careful adult supervision is required when this appliance is used on or near children. Do not use on very young children.

- This appliance should not be used, cleaned or maintained by children. Keep out of reach of children.
- Always ensure that this appliance is kept out of the reach of children at all times, particularly during use and whilst cooling.
- Allow the appliance to cool before storing away.
- This product contains batteries (NiMH rechargeable 2.4V) that are not to be removed from the appliance for charging.
- The batteries in this appliance are non-replaceable by the end user. Only an authorised engineer should perform this task for safety reasons.
- The supply terminals are not to be short circuited.
- For indoor, household, domestic use only.
- For the purposes of recharging the battery, only use the detachable charging supply unit provided with this appliance.
- This product complies fully with all appropriate EU and UK Legislation and the standards relevant to this type and class of appliance. We are an ISO9001:2015 credited company that continually evaluates our Quality Management System performance. If you have any queries regarding product safety and compliance, please contact the Conair Customer Care Line (refer to «UK After Sales Service» section).
- The battery should be removed for safe disposal at the end of its life.
- When the battery has run down, it should be disposed of at a recycling centre to safeguard the environment. If the battery leaks, avoid touching it and dispose of it at a recycling centre.

10 IN 1 TITANIUM MULTI TRIMMER

The BaBylissMEN Titanium Steel is a powerful, versatile multi trimmer for full face and body grooming. The acute angle Titanium cutting blade delivers smooth, effortless cutting. The 2 interchangeable heads offer total versatility so you can trim, shave and tidy to define your style.

FEATURES

- Rechargeable trimmer with 2 interchangeable cutting heads
- Precision Trimmer featuring Titanium blades
- Nose and Ear Trimmer
- 5x Beard comb guides (5mm, 6mm, 7mm, 8mm, 9mm)
- Adjustable stubble comb guide (1mm-3.5mm)
- 2x body comb guides (3mm, 4mm)
- 8 Hour charge
- 60 Minute run time
- Storage pouch

INSTRUCTIONS FOR USE

IMPORTANT! Only use the adaptor and attachments supplied with this appliance.

Charging the appliance

- This trimmer is equipped with Ni-MH batteries.
- Before using for the first time please take the time to allow to charge the trimmer for two consecutive full charges (2x 8 hours). This initial super-charge ensures optimum power performance. Maximum battery capacity will only be reached after 3 charging and discharging cycles.
- A full 8 hours charge will provide approximately 60 minutes of cordless use.
- Ensure the appliance is switched off.
- Place the adaptor plug directly into the main trimmer unit.
- The red LED will appear when the adaptor is correctly inserted into the appliance and connected to the mains.
- Once the appliance is fully charged for 8 hours, unplug the adapter from the appliance or switch off at the mains. the appliance can be prepared for using

Preserving the batteries

In order to maintain the optimum capacity of the rechargeable batteries, the trimmer should be fully discharged and then recharged for 8 hours every 3 months.

Preparation for Use

- Always inspect the appliance before use for noticeable signs of damage. Do not use if damaged.
- Ensure the heads are free from hair and debris and that the blades are properly oiled (refer to Cleaning & Maintenance section for further information).
- Subsequent charges should be for 8 hours and the LED will turn off when the unit is fully charged
- Ensure the appliance is sufficiently charged.
- Use on clean, dry hair that has been combed until tangle-free.
- Oil the blade before using.

Changing the Heads

- Before changing the heads, ensure the appliance is switched off.
- To remove a head, hold the handle of the appliance with one hand, hold the head with the other hand and push up from under the blades to lift the head up and away from the handle.
- To attach a head, line up the back of the attachment head with the holding section on the trimmer (See Fig. 1).
- Then line up the two front prongs of the attachment head with the two metal clips on the handle (See Fig. 2).
- These prongs on the head should rest on top of the metal clips from the handle (See Fig. 3).
- Click the head down on to the trimmer

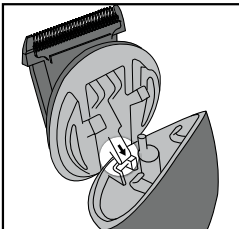


Fig. 1.

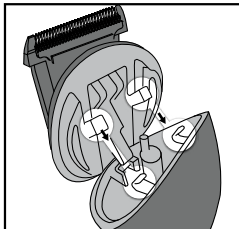


Fig. 2.

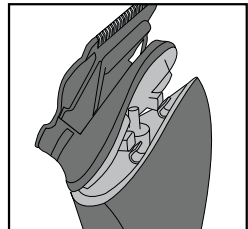


Fig. 3.

Installing the nose/ear trimmer

- Insert the pin of the trimmer body into the hole of the trimmer head (See Fig. 4).
- Line up the rear prong of the attachment head with the slot on the back of the handle (See Fig. 5).
- The head should lean at an angle with the two front prongs of the head resting on the metal clips of the handle (See Fig. 6).
- Click the head down onto the handle.

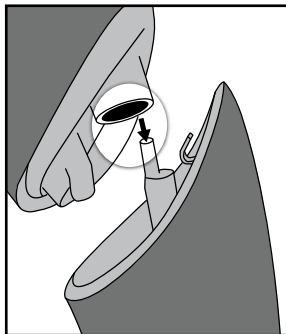


Fig. 4.

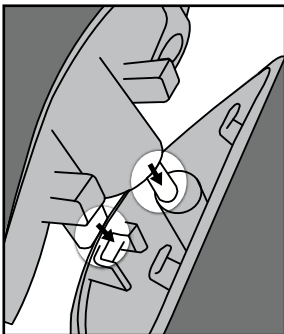


Fig. 5.

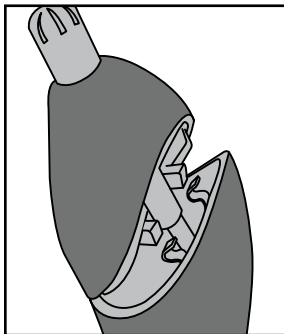


Fig. 6.

Using the Adjustable Stubble Comb Guide

The adjustable stubble comb guide allows you to take control of the length of your stubble to the ideal length between 1mm-3.5mm. You will need to experiment to find your preferred length, but as a guide, 1mm will give you a very short stubble beard and 3.5mm will be a short, neater beard.

Select a cutting length (1-3.5mm) using the slide switch on the top of the comb

Once you have selected your desired cutting length, the guide automatically locks into position for a guaranteed, even cut.

Switch the trimmer on by sliding the power button up, the blades will start to move and you can begin trimming.

Attaching the comb guides to the trimmer

Slide the trimmer teeth and the top of the blades into the space under the comb guide. (Fig. 1)

Click the guide into position by gently pressing the back of the guide down to the back of the blade. (Fig. 2) The comb guide should click under the back of the metal blade.

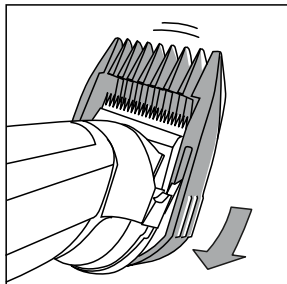


Fig. 1.

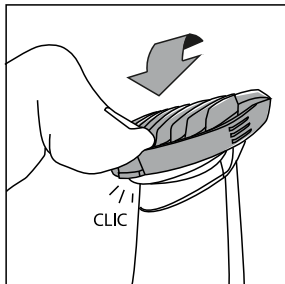
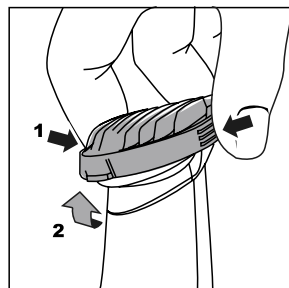


Fig. 2.

Using the trimmer without the comb guide

The trimmer can be used for detailing/shaping around the edge of the beard or to get a much closer result (0.4mm).

To remove the comb guide, squeeze the sides of the comb guide, which will release the back from the blade. Lift the guide away.



Nose & ear trimmer

Using the nose & ear trimmer:

- For the safe and easy removal of unwanted nose and ear hair use the rotary trimmer head.
- Switch the trimmer on.
- Insert the trimmer into the nose or ear and gently move the trimmer in a circular motion.
- Only use the trimmer at the entrance to the ear or nose. Do not use any deeper, as this could cause injury.
- Never turn the trimmer off whilst in the nose and ear hair.

CLEANING & MAINTENANCE

To maintain optimum performance, the appliance should be cleaned after each use:

- Remove the comb guide after use. Rinse under running water and dry thoroughly before storage or use.
- Remove the trimmer head after use. The heads are washable for easy cleaning. Rinse under running water and dry thoroughly before storage or use.
- Do not disassemble the blades.
- Periodically, it may be necessary to oil the blades. After cleaning, attach a trimmer head, switch on and oil the blades using a few drops of the lubricating oil supplied. Only use the lubricating oil supplied with the appliance as this is specifically formulated for high speed trimmers and does not evaporate or slow the blades.
- For instructions on how to re-attach the head, please refer to “Changing the Heads” section.

BATTERY DISPOSAL

To minimise hazards to health and the environment at the end of this product's life, laws dealing with Waste Electrical and Electronic Equipment (WEEE) and The Waste Battery Directive require you to dispose of these products and their batteries at a suitable collection facility where they will be sent for appropriate recycling. Please contact your local authorities for more details on recycling and safe disposal of these in your area.



UK GUARANTEE

The Conair Group Ltd, Unit 3, Waterfront Business Park,
Fleet GU51 3TW

This BaBylissMEN appliance is guaranteed for consumer use for 3 years and is only valid within the United Kingdom.

This guarantee covers consumer use only **i.e.** defects occurring under normal use within the home from date of purchase or date of delivery, whichever is later.

If the product develops a fault due to defects in materials or manufacture **within 12 months** from the date of purchase, to avoid delays and unnecessary inconvenience, where possible please return the product to the point of purchase for an exchange,

If the product develops a fault due to defects in materials or manufacture **after 12 months** from the date of purchase, and within the guarantee period, Conair UK After Sales Service will repair or replace the product.

Exclusions

This guarantee will no longer be valid meaning that The Conair Group Ltd will not be liable to repair or replace your product where:

- 1.) The appliance has been used on a voltage supply other than that which is marked on the product, or advised within this instruction booklet
- 2.) The appliance has been purchased from an unauthorised stockist*
- 3.) The appliance is used for professional / non domestic usage
- 4.) Repairs or alterations have been attempted by unauthorised persons
- 5.) The failure of the appliance is a direct result of misuse
- 6.) The failure is a result of not following the instructions for use

This guarantee does not cover any cosmetic damage due to misuse of the product nor any damage to persons or property that occurs because of product misuse.

**unauthorised stockists include, but are not limited to online auction sites, private sellers and those selling second hand goods, refurbished products etc*

Please contact the Conair Customer Care Line on 03705 133 191 (09:00 to 17:00 Monday to Friday) or e-mail ukinfo@conair.com for further information on authorised stockists.

It is important to retain your proof of purchase. We recommend attaching your receipt to this page.

Even where a refund may be applicable, no refund will be provided without a valid receipt or proof of purchase, we will only be able to

offer a repair or replacement service. Please note this does not apply if the product was purchased directly from The Conair Group Ltd.

Guarantees on replacement products run from the original purchase date or date of delivery, whichever is later, and **not** from the date of replacement.

This guarantee is an additional benefit and does not affect your statutory rights as a consumer.

If you have any queries regarding this guarantee please contact the Conair Customer Care Line on 03705 133 191 (09:00 to 17:00 Monday to Friday) or e-mail ukinfo@conair.com

UK AFTER SALES SERVICE

For further advice on using the appliance, contact the Conair Customer Care Line on 03705 133191 (09:00 to 17:00 Monday to Friday) or email your enquiry to ukinfo@conair.com.

If you should need to return your appliance to us please send it to the following address:

Customer Care Centre
Conair Logistics
Unit 4
Revolution Park
Buckshaw Avenue
Buckshaw Village
Chorley
PR7 7DW

Please enclose your name and address, together with a copy of proof of purchase and details of the fault.

Please note this Instruction Booklet is not the guarantee.

