

Family: BORSONIIDAE

Class: GASTROPODA**--- Clade: CAENOASTROPODA-HYPSOGASTROPODA-NEOGASTROPODA-CONOIDEA****----- Family: BORSONIIDAE** Bellardi, 1888 (Sea)- Alphabetic order - when **first name** is in bold the species has images

Taxa=359, Genus=35, Subgenus=0, Species=232, Subspecies=12, Synonyms=79, Images=116

- abarbarea, *Borsonella abarbarea* W.H. Dall, 1919 - syn of: [Antiplanes abarbarea](#) W.H. Dall, 1919
- abrupta, [Borsonella abrupta](#) J.H. McLean & L.H. Poorman, 1971
- adenica, [Typhlomangelia adenica](#) A.V. Sysoev, 1996
- aethiopica, [Bathytoma atractoides aethiopica](#) (E.C. Von Martens & K.H.J. Thiele, 1903)
- agassizii, [Borsonella agassizii](#) (W.H. Dall, 1908)
- agnata, [Bathytoma agnata](#) C. Hedley & W.F. Petterd, 1906
- aikenii, [Filodrillia aikenii](#) P. Stahlschmidt, 2015
- akkeshiensis, [Ophioidermella akkeshiensis](#) (T. Habe, 1958)
- albatrosi, *Drilliola albatrosi* F. Nordsieck, 1971 - syn of: [Drilliola emendata](#) (T.A. de M. Monterosato, 1872)
- albatrossi, *Drilliola albatrossi* B. Sabelli, 1990 - syn of: [Drilliola emendata](#) (T.A. de M. Monterosato, 1872)
- albula, [Maoritomella albula](#) (F.W. Hutton, 1873)
- albula, *Tomopleura albula* F.W. Hutton, 1873 - syn of: [Maoritomella albula](#) (F.W. Hutton, 1873)
- amyela, *Glyptaesopus amyela* W.H. Dall, 1919 - syn of: [Glyptaesopus phylira](#) (W.H. Dall, 1919)
- anaglypta, [Tropidoturris anaglypta](#) R.N. Kilburn, 1986
- angulifera, [Filodrillia angulifera](#) B.C. Cotton, 1947
- angustatus, *Micantapex angustatus* A.W.B. Powell, 1940 - syn of: [Kuroshoturris angustata](#) (A.W.B. Powell, 1940)
- antarctica, [Belaturricula antarctica](#) R.K. Dell, 1990
- antipodum, *Maoritomella antipodum* E.A. Smith, 1877 - syn of: [Maoritomella albula](#) (F.W. Hutton, 1873)
- arbucklei, [Bathytoma arbucklei](#) R.N. Kilburn, 1986
- armata, [Borsonia armata](#) O. Böttger, 1895
- atlantica, [Drilliola emendata atlantica](#) (É.A.A. Locard, 1897)
- atractoides, [Bathytoma atractoides](#) (R.B. Watson, 1881)
- atractoides aethiopica, [Bathytoma atractoides aethiopica](#) (E.C. Von Martens & K.H.J. Thiele, 1903)
- atractoides boholica, *Bathytoma atractoides boholica* M. Parth, 1994 - syn of: [Bathytoma boholica](#) M. Parth, 1994
- atractoides obsolescens, [Bathytoma atractoides obsolescens](#) (E.C. Von Martens & K.H.J. Thiele, 1903)
- atticae, [Asthenotoma ornata atticae](#) (F. Nordsieck, 1977)
- atticae, *Asthenotoma atticae* F. Nordsieck, 1977 - syn of: [Asthenotoma ornata atticae](#) (F. Nordsieck, 1977)
- badifasciata, [Bathytoma badifasciata](#)
- barbarentis, [Borsonella barbarentis](#) W.H. Dall, 1919
- barbierii, *Microdrillia barbierii* ⚡ Brusina, 1866 - syn of: [Drilliola loprestiana](#) (P. Cakara, 1841)
- bartschi, [Borsonella bartschi](#) (R. Arnold, 1903)
- batjanensis, [Maoritomella batjanensis](#) (M.M. Schepman, 1913)
- belaeformis, [Bathytoma belaeformis](#) (G.B. III Sowerby, 1903)
- bellardii, [Tomopleura bellardii](#) (F.P. Jousseau, 1883)
- bellardii, *Oligotoma bellardii* F.P. Jousseau, 1883 - syn of: [Tomopleura bellardii](#) (F.P. Jousseau, 1883)
- biconica, *Bathytoma biconica* C. Hedley, 1903 - syn of: [Benthofascis biconica](#) (C. Hedley, 1903)
- bitorquata, [Bathytoma bitorquata](#) (E.C. Von Martens, 1901)
- boholica, [Bathytoma boholica](#) M. Parth, 1994
- borserina, [Bathytoma borserina](#) Unknown
- brasiliana, [Borsonia brasiliana](#) D.L. Tippett, 1983
- brevicanalisis, *Typhlomangelia brevicanalisis* T. Shuto, 1983 - syn of: [Vexithara brevicanalisis](#) T. Shuto, 1983
- brevicanalisis, [Vexithara brevicanalisis](#) T. Shuto, 1983
- callicesta, [Borsonella callicesta](#) (W.H. Dall, 1902)
- canarica, [Asthenotoma ornata canarica](#) (J.L.M. Defrance, 1826)
- cancellata, [Ophioidermella cancellata](#) (P.P. Carpenter, 1864)
- cariosa, [Typhlomangelia cariosa](#) (R.B. Watson, 1886)
- carnicolor, [Bathytoma carnicolor](#)
- carrota, [Tomopleura carrota](#) (C.F. Laseron, 1954)
- ceroplasta, [Borsonia ceroplasta](#) (R.B. Watson, 1881)
- challengerii, [Awateria challengerii](#) (E.A. Smith, 1891)
- cheesemani, *Phenatoma cheesemani* F.W. Hutton, 1882 - syn of: [Phenatoma zealandica](#) (E.A. Smith, 1877)
- cicatrigula, [Tomopleura cicatrigula](#) (C. Hedley, 1922)
- circumvertens, [Microdrillia circumvertens](#) (J.C. Melville & R. Standen, 1901)
- civitella, *Borsonella civitella* W.H. Dall, 1919 - syn of: [Borsonella bartschi](#) (R. Arnold, 1903)
- clevei, [Pulsarella clevei](#) (F.P. Jousseau, 1883)
- clupeispina, [Maoritomella clupeispina](#) R.N. Kilburn, 1986
- coffea, [Tomopleura coffea](#) (K.H.J. Thiele, 1925)

- **cognata**, [Pulsarella cognata](#) (E.A. Smith, 1877)
- **colorata**, *Bathytoma colorata* A.V. Sysoev & P. Bouchet, 2001 – syn of: [Gemmuloborsonia colorata](#) (A.V. Sysoev & P. Bouchet, 2001)
- **columnaria**, [Filodrillia columnaria](#) C. Hedley, 1922
- **comatotropis**, *Drilliola comatotropis* W.H. Dall, 1881 – syn of: [Drilliola loprestiana](#) (P. Calcara, 1841)
- **commentica**, [Microdrillia commentica](#) (C. Hedley, 1915)
- **consors**, [Bathytoma consors](#) N. Puillandre, A.V. Sysoev & al., 2010
- **corona**, [Viridoturris corona](#) (C.F. Laseron, 1954)
- **coronadoi**, [Borsonella coronadoi](#) (W.H. Dall, 1908)
- **corpulenta**, [Typhlodaphne corpulenta](#) (R.B. Watson, 1881)
- **costifera**, [Apaturris costifera](#) W.L. May, 1920
- **cranaos**, [Bathytoma cranaos](#) N. Puillandre, A.V. Sysoev & al., 2010
- **crebrespirata**, [Filodrillia crebrespirata](#) (J.C. Verco, 1909)
- **crossei**, [Awateria crossei](#) (E.A. Smith, 1891)
- **declivis**, [Suavodrillia declivis](#) (E.C. Von Martens, 1880)
- **decorata**, [Bathytoma visagei decorata](#) R. Ardovini, 2015
- **delicatula**, [Filodrillia delicatula](#) C.F. Laseron, 1954
- **densecostulata**, [Maoritomella densecostulata](#) R.N. Kilburn, 1986
- **didyma**, *Bathytoma didyma* R.B. Watson, 1881 – syn of: [Bathytoma mitrella](#) (W.H. Dall, 1881)
- **diegensis**, [Borsonella diegensis](#) (W.H. Dall, 1908)
- **difficilis**, [Microdrillia difficilis](#) (E.A. Smith, 1879)
- **dilecta**, [Tomopleura dilecta](#) (C. Hedley, 1903)
- **dilecta parabola**, [Tomopleura dilecta parabola](#) (J.C. Verco, 1909)
- **dinos**, [Microdrillia dinos](#) R.N. Kilburn, 1986
- **dissimilis**, [Belaturricula dissimilis](#) (R.B. Watson, 1886)
- **dulcis**, [Filodrillia dulcis](#) (G.B. III Sowerby, 1896)
- **eidola**, *Borsonellopsis eidola* W.H. Dall, 1919 – syn of: [Borsonella callicesta](#) (W.H. Dall, 1902)
- **emendata**, [Drilliola emendata](#) (T.A. de M. Monterosato, 1872)
- **emendata atlantica**, [Drilliola emendata atlantica](#) (É.A.A. Locard, 1897)
- **engonia**, [Bathytoma engonia](#) (R.B. Watson, 1881)
- **epigona**, [Borsonia epigona](#) E.C. Von Martens, 1901
- **episoma**, [Bathytoma episoma](#)
- **ergata**, [Belaturricula ergata](#) (C. Hedley, 1916)
- **erosina**, [Borsonella erosina](#) (W.H. Dall, 1908)
- **esuriens**, *Borsonellopsis esuriens* W.H. Dall, 1908 – syn of: [Borsonella callicesta](#) (W.H. Dall, 1902)
- **esuriens pernoda**, *Borsonellopsis esuriens pernoda* W.H. Dall, 1908 – syn of: [Borsonella callicesta](#) (W.H. Dall, 1902)
- **eva**, [Maoritomella eva](#) (K.H.J. Thiele, 1925)
- **excelsa**, [Zemacies excelsa](#) A.V. Sysoev & P. Bouchet, 2001
- **expeditionis**, [Apaturris expeditionis](#) (W.R.B. Oliver, 1915)
- **fancherae**, [Ophiidermella fancherae](#) (W.H. Dall, 1903)
- **fastosa**, *Turridrupa fastosa* C. Hedley, 1907 – syn of: [Microdrillia fastosa](#) (C. Hedley, 1907)
- **feris**, [Viridoturris feris](#) J.T. Kuroda & K. Oyama, 1971
- **filostriata**, [Typhlodaphne filostriata](#) (H. Strebler, 1905)
- **fissa**, [Bathytoma fissa](#) (E.C. Von Martens, 1901)
- **fluctuosa**, [Typhlomangelia fluctuosa](#) (R.B. Watson, 1881)
- **foliacea**, [Maoritomella foliacea](#) C.F. Laseron, 1954
- **formosensis**, [Bathytoma formosensis](#) J.L. Vera-Peñáz, 2004
- **fossata**, [Tropidoturris fossata](#) (G.B. III Sowerby, 1903)
- **fossata notialis**, [Tropidoturris fossata notialis](#) R.N. Kilburn, 1986
- **fultoni**, [Pulsarella fultoni](#) (G.B. III Sowerby, 1888)
- **fultoni**, *Tomopleura fultoni* G.B. III Sowerby, 1888 – syn of: [Pulsarella fultoni](#) (G.B. III Sowerby, 1888)
- **fuscocincta**, [Tomopleura fuscocincta](#) S. Gofas & E. Rolán, 2009
- **gabrielae**, [Bathytoma gabrielae](#) L. Bozzetti, 2006
- **gaini**, [Belaturricula gaini](#) (É. Lamy, 1910)
- **galapagana**, [Borsonella galapagana](#) J.H. McLean & L.H. Poorman, 1971
- **gemmuloides**, [Heteroturris gemmuloides](#) A.V. Sysoev, 1997
- **glabra**, [Belaturricula glabra](#) M. Yokoyama, 1920
- **gordonlarki**, [Bathytoma gordonlarki](#) J.K. Tucker & B.M. Olivera, 2011
- **granilirata**, [Maoritomella granilirata](#) R.N. Kilburn, 1986
- **grippi**, [Ophiidermella grippi](#) (W.H. Dall, 1919)
- **halcyonis**, [Ophiidermella halcyonis](#) W.H. Dall, 1908
- **haswelli**, [Filodrillia haswelli](#) (C. Hedley, 1907)
- **hecatorgnia**, [Bathytoma hecatorgnia](#) (J.C. Verco, 1907)
- **hectorguia**, *Bathytoma hectorguia* J.C. Verco, 1907 – syn of: [Bathytoma hecatorgnia](#) (J.C. Verco, 1907)
- **hedlandensis**, [Bathytoma hedlandensis](#) D.L. Tippett & S. Kosuge, 1994
- **helenae**, [Bathytoma helenae](#) R.N. Kilburn, 1974

- hirondeleae, [Borsonia hirondeleae](#) (P. Dautzenberg, 1891)
- hooveri, *Borsonella hooveri* R. Arnold, 1903 - syn of: [Nassarius versicolor](#) (A. Adams, 1852)
- horrida, *Cordieria horrida* T.A. de M. Monterosato, 1884 - syn of: [Raphitoma horrida](#) (T.A. de M. Monterosato, 1884)
- hoylei, [Awateria hoylei](#) (E.A. Smith, 1891)
- hubrechtii, [Diptychophlia hubrechtii](#) C.M. Cunha, 2005
- incisa, *Ophiidermella incisa* P.P. Carpenter, 1864 - syn of: [Ophiidermella inermis](#) (L.A. Reeve, 1843)
- inermis, [Ophiidermella inermis](#) (L.A. Reeve, 1843)
- innocentia, [Typhlodaphne innocentia](#) R.K. Dell, 1990
- intermissa, [Filodrillia tricarinata intermissa](#) (C.F. Laseron, 1954)
- isabelita, [Bathytoma isabelita](#) Unknown Author
- ischna, [Maoritomella ischna](#) (R.B. Watson, 1881)
- ischna, *Tomopleura ischna* R.B. Watson, 1881 - syn of: [Maoritomella ischna](#) (R.B. Watson, 1881)
- jaffa, [Borsonia jaffa](#) B.C. Cotton, 1947
- jaya, [Borsonia jaya](#) A.V. Sysoev, 1997
- kennicotti, [Suavodrillia kennicotti](#) (W.H. Dall, 1871)
- komakimonos, [Pulsarella komakimonos](#) (Y. Otuka, 1935)
- lacertosus, [Bathytoma lacertosus](#) (C. Hedley, 1922)
- lacteola, [Filodrillia lacteola](#) (J.C. Verco, 1909)
- lacteola sinusegens, [Filodrillia lacteola sinusegens](#) J.C. Verco, 1909
- lamothei, [Asthenotoma lamothei](#) (P. Dautzenberg, 1910)
- leptopleura, [Maoritomella leptopleura](#) R.N. Kilburn, 1986
- lincta, [Typhlomangelia lincta](#) (R.B. Watson, 1881)
- lindae, [Paraborsonia lindae](#) E.J. Petuch, 1987
- lira, [Darbya lira](#) P. Bartsch, 1934
- locardi, [Aphanitoma locardi](#) A.R.J.B. Bavay, 1906
- loprestiana, [Drilliola loprestiana](#) (P. Calcara, 1841)
- loprestiana, *Microdrillia loprestiana* P. Calcara, 1841 - syn of: [Drilliola loprestiana](#) (P. Calcara, 1841)
- luehdorfi, [Bathytoma luehdorfi](#) (C.E. Lischke, 1872)
- luehdorfi, *Micantapex luehdorfi* C.E. Lischke, 1872 - syn of: [Bathytoma luehdorfi](#) (C.E. Lischke, 1872)
- luehdorfi, *Bathytoma luehdorfi* C.E. Lischke, 1872 - syn of: [Bathytoma luehdorfi](#) (C.E. Lischke, 1872)
- makemonos, [Tomopleura makemonos](#) (F.P. Jousseume, 1883)
- makimonos, *Tomopleura makimonos* F.P. Jousseume, 1883 - syn of: [Tomopleura nivea](#) (R.A. Philippi, 1851)
- maldivica, [Typhlomangelia maldivica](#) A.V. Sysoev, 1996
- marchandi, [Genota marchandi](#) M. Pin, 1996
- mariottinii, [Aphanitoma mariottinii](#)
- martinensis, *Ophiidermella martinensis* W.H. Dall, 1919 - syn of: [Ophiidermella grippi](#) (W.H. Dall, 1919)
- mediocarinata, [Bathytoma mediocarinata](#) M. Yokoyama, 1920
- megalacme, [Drilliola megalacme](#) (E.R. Sykes, 1906)
- megalacme, [Maoritomella megalacme](#) R.N. Kilburn, 1986
- meneghinii, [Asthenotoma meneghinii](#) C. Mayer, 1868
- merriami, [Borsonella merriami](#) R. Arnold, 1903
- mitraeformis, *Genota mitraeformis* W. Wood, 1828 - syn of: [Genota mitriformis](#) (W. Wood, 1828)
- mitrella, [Bathytoma mitrella](#) (W.H. Dall, 1881)
- mitriformis, [Genota mitriformis](#) (W. Wood, 1828)
- miyatenis, [Ophiidermella miyatenis](#) (M. Yokoyama, 1920)
- moniliger, *Drilliola moniliger* F.J. Conraine, 1835 - syn of: [Drilliola loprestiana](#) (P. Calcara, 1841)
- montereyensis, *Ophiidermella montereyensis* P. Bartsch, 1944 - syn of: [Ophiidermella inermis](#) (L.A. Reeve, 1843)
- mucronata, [Filodrillia mucronata](#) C. Hedley, 1922
- multiplex, [Maoritomella multiplex](#) (W.H. Webster, 1906)
- multiplex, *Tomopleura multiplex* W.H. Webster, 1906 - syn of: [Maoritomella multiplex](#) (W.H. Webster, 1906)
- multispiralis, [Belaterricula turrita multispiralis](#) R.K. Dell, 1990
- murdochi, [Bathytoma murdochi](#) H.J. Finlay, 1930
- neocaledonica, [Bathytoma neocaledonica](#) N. Puillandre, A.V. Sysoev & al., 2010
- netrion, [Bathytoma netrion](#) N. Puillandre, A.V. Sysoev & al., 2010
- nicklesi, [Genota nicklesi](#) J. Knudsen, 1952
- nicoli, *Borsonella nicoli* W.H. Dall, 1919 - syn of: [Borsonella bartschi](#) (R. Arnold, 1903)
- nigeriensis, [Genota nigeriensis](#) J.L. Vera-Peláez, 2004
- niponica, [Microdrillia niponica](#) (E.A. Smith, 1879)
- nipri, [Typhlodaphne nipri](#) H. Numanami, 1996
- nivale, *Typhlomangelia nivale* S.L. Lovén, 1846 - syn of: [Typhlomangelia nivalis](#) (S.L. Lovén, 1846)
- nivalis, [Typhlomangelia nivalis](#) (S.L. Lovén, 1846)
- nivea, [Tomopleura nivea](#) (R.A. Philippi, 1851)
- nodilirata, *Micantapex nodilirata* R. Murdoch & H.H. Suter, 1906 - syn of: [Bathytoma murdochi](#) H.J. Finlay, 1930
- notialis, [Tropidoturris fossata notialis](#) R.N. Kilburn, 1986
- notoensis, [Tomopleura notoensis](#) Y. Otuka, 1935

- novaezelandiae, [Phenatoma novaezelandiae](#) (L.A. Reeve, 1843)
- nychia, *Borsonella nychia* W.H. Dall, 1919 - syn of: [Borsonella coronadoi](#) (W.H. Dall, 1908)
- obsolescens, [Bathytoma atractoides obsolescens](#) (E.C. Von Martens & K.H.J. Thiele, 1903)
- occata, [Diptychophlia occata](#) (R.B. Hinds, 1843)
- ochracea, [Borsonia ochracea](#) K.H.J. Thiele, 1925
- ogurana, [Ophiidermella ogurana](#) (M. Yokoyama, 1922)
- oldhami, [Bathytoma oldhami](#) (E.A. Smith, 1899)
- oldroydi, [Glyptaesopus oldroydi](#) (R. Arnold, 1903)
- omphale, [Borsonella omphale](#) W.H. Dall, 1919
- ophioderma, *Ophiidermella ophioderma* W.H. Dall, 1908 - syn of: [Ophiidermella inermis](#) (L.A. Reeve, 1843)
- optabilis, [Awateria optabilis](#) (R. Murdoch & H.H. Suter, 1906)
- optima, [Microdrillia optima](#) (K.H.J. Thiele, 1925)
- opulenta, *Tropidoturris opulenta* K.H.J. Thiele, 1925 - syn of: [Tropidoturris scitecosta](#) (G.B. III Sowerby, 1903)
- ordinata, [Filodrillia ordinata](#) C.F. Laseron, 1954
- orientalis, [Maoritomella orientalis](#) R.K. Dell, 1956
- ornata, [Asthenotoma ornata](#) (J.L.M. DeFrance, 1826)
- ornata, [Filodrillia ornata](#) C. Hedley, 1922
- ornata atticae, [Asthenotoma ornata atticae](#) (F. Nordsieck, 1977)
- ornata canarica, [Asthenotoma ornata canarica](#) (J.L.M. DeFrance, 1826)
- oscitans, [Tomopleura oscitans](#) R.N. Kilburn, 1986
- papalis, [Genota papalis](#) (L.A. Reeve, 1843)
- papillaris, [Genota papillaris](#) (R.B. Hinds, 1843)
- parabola, [Tomopleura dilecta parabola](#) (J.C. Verco, 1909)
- paratractoides, [Bathytoma paratractoides](#)
- parengonia, [Bathytoma parengonia](#) (R.K. Dell, 1956)
- patricia, [Microdrillia patricia](#) (J.C. Melville, 1904)
- payeni, [Typhlodaphne payeni](#) (A. de Rochebrune & J.F. Mabille, 1885)
- pergradata, [Filodrillia pergradata](#) B.C. Cotton, 1947
- pertinax, *Microdrillia pertinax* C. Hedley, 1922 - syn of: [Turridrupa pertinax](#) C. Hedley, 1922
- phylira, [Glyptaesopus phylira](#) (W.H. Dall, 1919)
- pinosensis, [Borsonella pinosensis](#) P. Bartsch, 1944
- planilirata, [Tropidoturris planilirata](#) R.N. Kilburn, 1986
- platamodes, [Typhlodaphne platamodes](#) (R.B. Watson, 1881)
- pleonastica, [Maoritomella pleonastica](#) (K.H. Barnard, 1958)
- polythele, [Typhlomangelia polythele](#) K.H. Barnard, 1963
- pondo, [Tropidoturris simplicicingula pondo](#) R.N. Kilburn, 1986
- pouloensis, [Tomopleura pouloensis](#) (F.P. Jousseume, 1883)
- principalis, [Typhlomangelia principalis](#) K.H.J. Thiele, 1912
- proctorae, [Glyptaesopus proctorae](#) (M. Smith, 1936)
- prodicia, [Bathytoma prodicia](#) R.N. Kilburn, 1986
- profundis, [Bathytoma profundis](#) (C.F. Laseron, 1954)
- profundis, *Micantapex profundis* C.F. Laseron, 1954 - syn of: [Bathytoma profundis](#) (C.F. Laseron, 1954)
- pruina, *Drilliola pruina* (R.B. Watson, 1881) - syn of: [Retidrillia pruina](#) (R.B. Watson, 1881)
- pruina, [Retidrillia pruina](#) (R.B. Watson, 1881)
- pseudopannus, [Ophiidermella pseudopannus](#) (M. Yokoyama, 1922)
- psilarosus, [Ophiidermella psilarosus](#) K.H. Barnard, 1958
- punicea, [Bathytoma punicea](#)
- pupoides, *Cordieria pupoides* T.A. de M. Monterosato, 1884 - syn of: [Raphitoma pupoides](#) (T.A. de M. Monterosato, 1884)
- purissima, [Typhlodaphne purissima](#) (H. Strebler, 1908)
- pusilla, [Borsonia pusilla](#) (R.W. Dunker, 1871)
- pyrha, [Typhlomangelia pyrha](#) (R.B. Watson, 1881)
- quantoana, [Tomopleura quantoana](#) M. Yokoyama, 1920
- queenslandica, [Zemacies queenslandica](#) (A.W.B. Powell, 1969)
- radula, *Cordieria radula* T.A. de M. Monterosato, 1884 - syn of: [Raphitoma cordieri](#) (B.C.M. Payraudeau, 1826)
- reciproca, [Tomopleura reciproca](#) (A.A. Gould, 1860)
- reevei, *Tomopleura reevei* C.B. Adams, 1850 - syn of: [Tomopleura reevii](#) (C.B. Adams, 1850)
- reevii, [Tomopleura reevii](#) (C.B. Adams, 1850)
- regina, [Tomopleura regina](#) (K.H.J. Thiele, 1925)
- regnans, [Bathytoma regnans](#) J.C. Melville, 1918
- retusispirata, [Tomopleura retusispirata](#) (E.A. Smith, 1877)
- rhines, *Ophiidermella rhines* W.H. Dall, 1908 - syn of: [Ophiidermella cancellata](#) (P.P. Carpenter, 1864)
- rhodope, *Borsonella rhodope* W.H. Dall, 1919 - syn of: [Rhodopetoma diaulax](#) (W.H. Dall, 1908)
- rosea, [Phenatoma rosea](#) (J.R.C. Quoy & J.P. Gaimard, 1833)
- rouaultii, [Cordieria rouaultii](#) (W.H. Dall, 1889)
- saccoi, [Borsonia saccoi](#) W.H. Dall, 1908

- **sagamiana**, *Suavodrililla sagamiana* W.H. Dall, 1925 - syn of: [Bathytoma engonia](#) (R.B. Watson, 1881)
- **sagamiana**, *Riuguhdrillia sagamiana* W.H. Dall, 1925 - syn of: [Bathytoma engonia](#) (R.B. Watson, 1881)
- **sagamiensis**, [Microdrillia sagamiensis](#) J.T. Kuroda, T. Habe & K. Oyama, 1971
- **sansibarica**, [Microdrillia sansibarica](#) (K.H.J. Thiele, 1925)
- **scitecosta**, [Tropidoturris scitecosta](#) (G.B. III Sowerby, 1903)
- **scitecostata**, *Tropidoturris scitecostata* G.B. III Sowerby, 1903 - syn of: [Tropidoturris scitecosta](#) (G.B. III Sowerby, 1903)
- **serta**, [Heteroturrisserta](#) A.V. Sysoev, 1997
- **shinzato**, [Borsonella shinzato](#) F.S. MacNeil, 1960
- **silicea**, [Borsonia silicea](#) (R.B. Watson, 1881)
- **simplicicingula**, [Tropidoturris simplicicingula](#) (K.H. Barnard, 1958)
- **simplicicingula pondo**, [Tropidoturris simplicicingula pondo](#) R.N. Kilburn, 1986
- **sinusegens**, [Filodrillia lacteola sinusegens](#) J.C. Verco, 1909
- **sirpata**, [Athenotoma sirpata](#) F.P. Jousseau, 1891
- **smithi**, [Borsonia smithi](#) M.M. Schepman, 1913
- **sola**, [Heteroturris sola](#) A.W.B. Powell, 1967
- **solomonensis**, [Bathytoma solomonensis](#)
- **somalica**, [Bathytoma somalica](#) R. Ardovini, 2015
- **spiralis**, *Tomopleura spiralis* E.A. Smith, 1872 - syn of: [Tomopleura spiralissima](#) S. Gofas & E. Rolán, 2009
- **spiralissima**, [Tomopleura spiralissima](#) S. Gofas & E. Rolán, 2009
- **stadialis**, [Filodrillia stadialis](#) C. Hedley, 1922
- **stearnsiana**, *Genota stearnsiana* W.J. Raymond, 1904 - syn of: [Megasurcula stearnsiana](#) (W.J. Raymond, 1904)
- **steira**, [Austroturris steira](#) (C. Hedley, 1922)
- **stenos**, [Bathytoma stenos](#) N. Puillandre, A.V. Sysoev & P. Bouchet, 2010
- **stephenensis**, *Microdrillia stephenensis* C.F. Laseron, 1954 - syn of: [Microdrillia stephensis](#) C.F. Laseron, 1954
- **stephensis**, [Microdrillia stephensis](#) C.F. Laseron, 1954
- **strebeli**, [Typhlodaphne strebeli](#) A.W.B. Powell, 1951
- **striatotuberculata**, [Micantapex striatotuberculata](#) (M. Yokoyama, 1928)
- **subcorpulenta**, *Borsonia subcorpulenta* E.A. Smith, 1894 - syn of: [Comitas symbiotes subcorpulenta](#) (E.A. Smith, 1894)
- **subtilinea**, [Tomopleura subtilinea](#) (C. Hedley, 1918)
- **symbiophora**, [Borsonia symbiophora](#) A.V. Sysoev, 1996
- **syngenes**, [Borsonia syngenes](#) (R.B. Watson, 1881)
- **tanneri**, *Drilliola tanneri* A.E. Verrill & S. Smith, 1884 - syn of: [Retidrillia pruina](#) (R.B. Watson, 1881)
- **tarrhion**, [Maoritomella tarrhion](#) R.N. Kilburn, 1986
- **teres**, [Filodrillia teres](#) C.F. Laseron, 1954
- **textilia**, [Suavodrililla textilia](#) W.H. Dall, 1927
- **thola**, [Tomopleura thola](#) (C.F. Laseron, 1954)
- **thornleyana**, [Filodrillia thornleyana](#) C.F. Laseron, 1954
- **tiara**, [Drilliola tiara](#) R.B. Watson, 1881
- **timorensis**, [Borsonia timorensis](#) (M.M. Schepman, 1913)
- **tippetti**, [Bathytoma tippetti](#) J.L. Vera-Peláez, 2004
- **tmeta**, *Typhlomangelia tmeta* R.B. Watson, 1881 - syn of: [Spirotropis tmeta](#) (R.B. Watson, 1881)
- **tomuiensis**, [Bathytoma tomuiensis](#) F.S. MacNeil, 1960
- **translucida**, *Typhlodaphne translucida* R.B. Watson, 1881 - syn of: [Xanthodaphne translucida](#) (R.B. Watson, 1881)
- **tremperiana**, *Bathytoma tremperiana* W.H. Dall, 1911 - syn of: [Megasurcula tremperiana](#) (W.H. Dall, 1911)
- **tricarinata**, [Filodrillia tricarinata](#) (J.E. Tenison-Woods, 1878)
- **tricarinata intermissa**, [Filodrillia tricarinata intermissa](#) (C.F. Laseron, 1954)
- **tricincta**, [Tomopleura tricincta](#) S. Gofas & E. Rolán, 2009
- **trina**, [Microdrillia trina](#) W.C. Mansfield, 1925
- **triporcata**, [Microdrillia triporcata](#) (E.A. Smith, 1879)
- **trophonoides**, [Filodrillia trophonoides](#) (J.C. Verco, 1909)
- **tuckeri**, [Bathytoma tuckeri](#) J.L. Vera-Peláez, 2004
- **turrita**, [Belaturricula turrita](#) (H. Strebel, 1908)
- **turrita multispinalis**, [Belaturricula turrita multispinalis](#) R.K. Dell, 1990
- **vafra**, [Genota vafra](#) E.R. Sykes, 1905
- **vallata**, *Tomopleura vallata* A.A. Gould, 1860 - syn of: [Tomopleura pouloensis](#) (F.P. Jousseau, 1883)
- **vancouverensis**, *Ophiodermella vancouverensis* E.A. Smith, 1880 - syn of: [Ophiodermella cancellata](#) (P.P. Carpenter, 1864)
- **vertebrata**, [Tomopleura vertebrata](#) (E.A. Smith, 1875)
- **vertebrata**, *Maoritomella vertebrata* J.L. Bouge & P. Dautzenberg, 1914 - syn of: [Tomopleura subtilinea](#) (C. Hedley, 1918)
- **viabrunnea**, [Bathytoma viabrunnea](#) (W.H. Dall, 1889)
- **virgo**, [Bathytoma virgo](#) (T.A. Okutani, 1966)
- **visagei**, [Bathytoma visagei](#) R.N. Kilburn, 1973
- **visagei decorata**, [Bathytoma visagei decorata](#) R. Ardovini, 2015
- **vitrea**, [Filodrillia vitrea](#) C.F. Laseron, 1954
- **vizcondei**, [Tropidoturris vizcondei](#) M. Morassi & A. Bonfitto, 2013
- **watsoni**, [Awateria watsoni](#) (E.A. Smith, 1891)

- **weinkauffi**, *Tomopleura weinkauffi* H.C. Weinkauff & W. Kobelt, 1875 - syn of: **[Tomopleura reevii](#)** (C.B. Adams, 1850)
 - willetti, **[Retidrillia willetti](#)** (W.H. Dall, 1919)
 - **xenicus**, **[Glyptaesopus xenicus](#)** (H.A. Pilsbry & H.N. Lowe, 1932)
 - **zealandica**, **[Phenatoma zealandica](#)** (E.A. Smith, 1877)
 - zeuxippe, **[Microdrillia zeuxippe](#)** (W.H. Dall, 1919)
-

Class: GASTROPODA
--- Clade: CAENOGASTROPODA-HYPSOGASTROPODA-NEOGASTROPODA-CONOIDEA

----- Family: **BORSONIIDAE** Belardi, 1888
Habitat= Sea, Taxonomic order
Taxa=359, Genus=35, Subgenus=0, Species=232, Subspecies=12, Synonyms=79, Images=116

Genus: **Apaturris** T. Iredale, 1917 (2 SP, 0 IMG)



5346000302
Apaturris
costifera
W.L. May, 1920

No Georeferenced data available



5346000313
Apaturris
expeditionis
(W.R.B. Oliver, 1915)
New Zealand



Genus: **Aphanitoma** L.M.D. Belardi, 1875 (2 SP, 2 IMG)



2115505680
Aphanitoma
locardi
A.R.J.B. Bavay, 1906
Morocco
10 mm



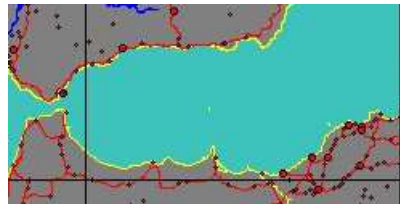
synonyms:

● *Mitra biconica* E.R. Sykes, 1911

● *Turris locardi* A.R.J.B. Bavay, 1906



2115505690
Aphanitoma
mariottinii
C. Smriglio, S. Ruffini,
& J.M. Martin Perez, 2001
Alboran Sea
11,3 mm



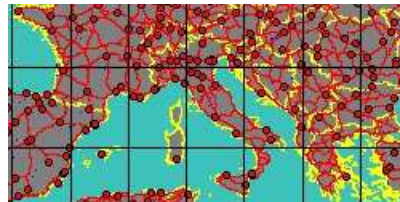
Genus: **Asthenotoma** G.F. Harris & H.W. Burrows, 1891 (syn: Oligotoma - 4 SP, 3 IMG)



2128801125
Asthenotoma
lamothei
(P. Dautzenberg, 1910)
West Sahara
7 mm



2128801135
Asthenotoma
meneghinii
C. Mayer, 1868
Italy



synonyms:

● *Pleurotoma meneghinii* C. Mayer, 1868

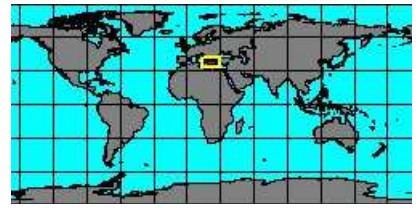
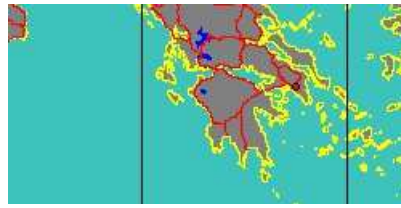


2128817795
Asthenotoma
ornata
(J.L.M. DeFrance, 1826)
Fossil

No Georeferenced data available



2128801155
**Asthenotoma
ornata
atticae**
(F. Nordsieck, 1977)
Aegine, Attiki, Greece
10 mm



synonyms:

- *Fehria atticae* F. Nordsieck, 1977
- *Asthenotoma atticae* F. Nordsieck, 1977

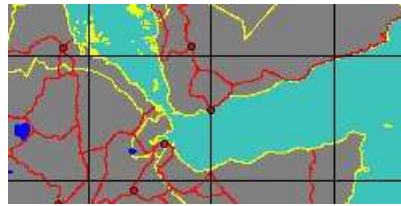


2128801145
**Asthenotoma
ornata
canarica**
(J.L.M. Defrance, 1826)

No Georeferenced data available



2115509750
**Asthenotoma
sirpata**
F.P. Jousseau, 1891
Yemen, Aden
21,6 mm



Genus: Austroturris C.F. Laseron, 1954 (1 SP, 0 IMG)



2128816105
**Austroturris
steira**
(C. Hedley, 1922)
Port Stephens, Australia



Genus: Awateria H.H. Suter, 1917 (5 SP, 1 IMG)



2115505730
**Awateria
challengeri**
(E.A. Smith, 1891)

No Georeferenced data available

synonyms:

- *Pleurotoma challengeri* E.A. Smith, 1891



2115505740
**Awateria
crossei**
(E.A. Smith, 1891)

No Georeferenced data available

synonyms:

- *Pleurotoma crossei* E.A. Smith, 1891



2115505750
**Awateria
hoylei**
(E.A. Smith, 1891)

No Georeferenced data available

synonyms:

- *Pleurotoma hoylei* E.A. Smith, 1891



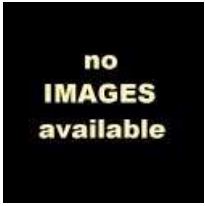
5346000187
**Awateria
 optabilis**
 (R. Murdoch & H.H. Suter, 1906)
 New Zealand



synonyms:

- *Drilia optabilis* R. Murdoch & H.H. Suter, 1906

- *Vexitomina optabilis* R. Murdoch & H.H. Suter, 1906



5346000009
**Awateria
 watsoni**
 (E.A. Smith, 1891)

No Georeferenced data available

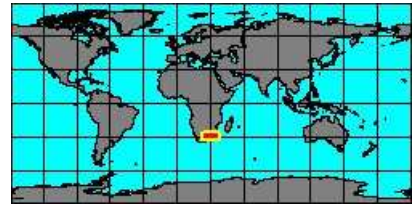
synonyms:

- *Pleurotoma watsoni* E.A. Smith, 1891

Genus: Bathytoma G.F. Harris & H.W. Burrows, 1891 (syn: Dolichotoma, Parabathytoma - 44 SP, 33 IMG)



2120100060
**Bathytoma
 agnata**
 C. Hedley & W.F. Petterd, 1906
 South Africa, Natal, Durban Bay
 39,7 mm

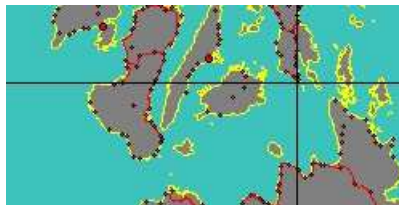


2128810055
**Bathytoma
 arbucklei**
 R.N. Kilburn, 1986

No Georeferenced data available



2120100000
**Bathytoma
 atractoides**
 (R.B. Watson, 1881)
 Philippines, Bohol Island
 57 mm



2140013215
**Bathytoma
 atractoides
 aethiopica**
 (E.C. Von Martens & K.H.J. Thiele, 1903)
 Somalia
 39,7 mm



2128801275
**Bathytoma
 atractoides
 obsolescens**
 (E.C. Von Martens & K.H.J. Thiele, 1903)
 Indo-Pacific

No Georeferenced data available

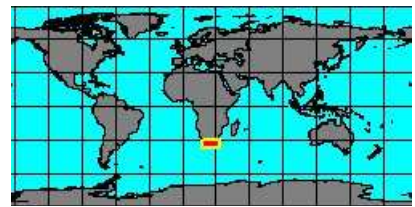


2140012702
**Bathytoma
 badifasciata**
 N. Puillandre, A.V. Sysoev, B.M. Olivera,
 & P. Bouchet, 2010
 Port Hedland, Australia
 69 mm

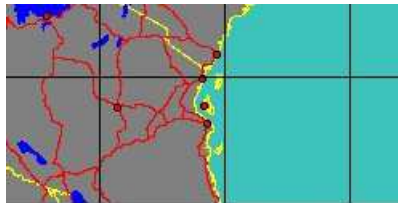




212010005
Bathytoma
belaeformis
 (G.B. III Sowerby, 1903)
 Algoa Bay, South Africa
 21 mm



212881915
Bathytoma
bitorquata
 (E.C. Von Martens, 1901)
 Tanzania



212010005
Bathytoma
boholica
 M. Parth, 1994
 Philippines, Balut Island
 56 mm

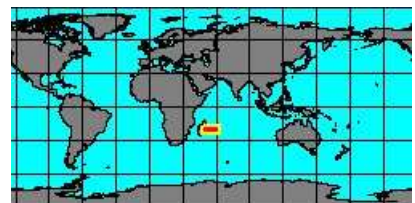
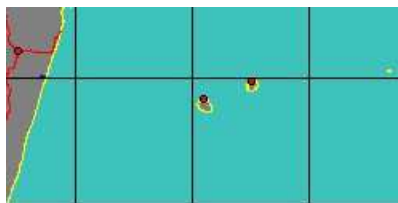


synonyms:

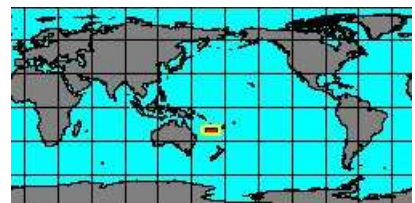
- Bathytoma atractoides boholica M. Parth, 1994



2128801305
Bathytoma
borserina
 Unknown
 Réunion



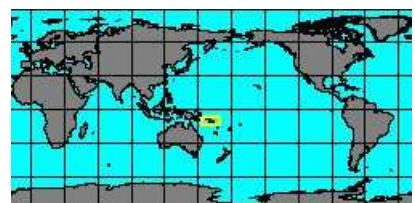
2128802625
Bathytoma
carnicolor
 N. Puillandre, A.V. Sysoev, B.M. Olivera,
 & P. Bouchet, 2010
 New Caledonia



2140012974
Bathytoma
consors
 N. Puillandre, A.V. Sysoev & al., 2010
 San Cristobal Island, Solomons



2140012706
Bathytoma
cranaos
 N. Puillandre, A.V. Sysoev & al., 2010
 San Cristobal Island, Solomon Islands



2140013127
Bathytoma
engonia
 (R.B. Watson, 1881)
 East China Sea, Zhejiang province
 62,1 mm



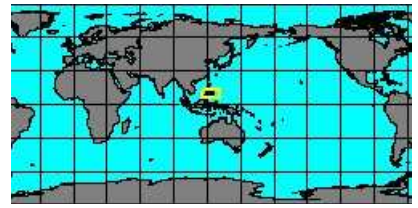
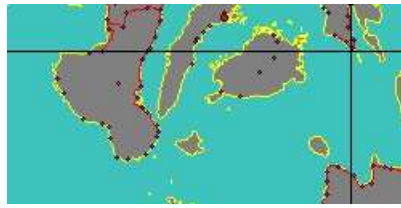
synonyms:

- Suavodrilina sagamiana W.H. Dall, 1925

- Riuguhdrilla sagamiana W.H. Dall, 1925



2140012710
Bathytoma
episoma
N. Puillandre, A.V. Sysoev, B.M. Olivera,
& P. Bouchet, 2010
Philippines, Balicasag Island
73,6 mm



2128811645
Bathytoma
fissa
(E.C. Von Martens, 1901)
Indo-Pacific

No Georeferenced data available

synonyms:

- Pleurotoma fissa E.C. Von Martens, 1901



2140013184
Bathytoma
formosensis
J.L. Vera-Peñáz, 2004

No Georeferenced data available



2128801335
Bathytoma
gabrielae
L. Bozzetti, 2006
Mozambique
42,5 mm



5346000045
Bathytoma
gordonlarki
J.K. Tucker & B.M. Olivera, 2011
Port Hedland, Australia
56 mm



2128810065
Bathytoma
hecatorgnia
(J.C. Verco, 1907)

No Georeferenced data available

synonyms:

- Drilia hecatorgnia J.C. Verco, 1907
- Bathytoma hecatorgnia J.C. Verco, 1907



2120100010
Bathytoma
hedlandensis
D.L. Tippett & S. Kosuge, 1994
Philippines, Cebu
42 mm



2120100015
Bathytoma
helenae
R.N. Kilburn, 1974
South Africa, Durban
53 mm





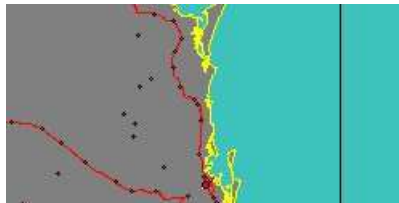
2140012714
Bathytoma
isabelita

Unknown Author

No Georeferenced data available



2128820875
Bathytoma
lacertosus
(C. Hedley, 1922)
Mooloolaba, Australia
18 mm

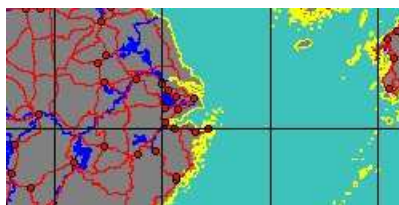


synonyms:

- Inquisitor lacertosus C. Hedley, 1922
- Clavus lacertosus C. Hedley, 1922



2128823049
Bathytoma
luehdorfi
(C.E. Lischke, 1872)
East China Sea
62,38 mm



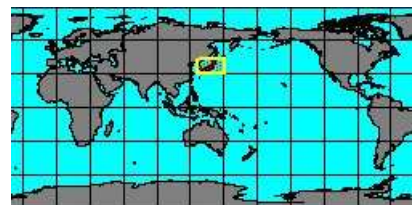
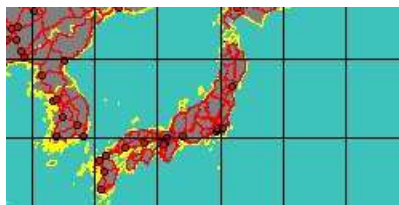
synonyms:

- Micantapex luehdorfi C.E. Lischke, 1872
- Pleurotoma luehdorfi C.E. Lischke, 1872

- Bathytoma luehdorfi C.E. Lischke, 1872



2128820895
Bathytoma
mediocarinata
M. Yokoyama, 1920
Japan



2128801345
Bathytoma
mitrella
(W.H. Dall, 1881)
America

No Georeferenced data available

synonyms:

- Bathytoma didyma R.B. Watson, 1881

- Pleurotoma mitrella W.H. Dall, 1881



2128810075
Bathytoma
murdochi
H.J. Finlay, 1930
New Zealand

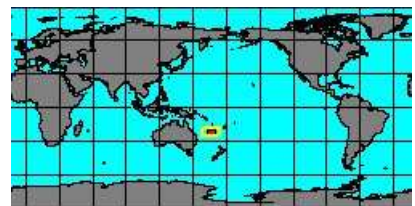


synonyms:

- Micantapex nodilirata R. Murdoch & H.H. Suter, 1906



2140012718
Bathytoma
neocaledonica
N. Puillandre, A.V. Syssoev & al., 2010
Vauban stn 40



2140012722
Bathytoma
netrion
N. Puillandre, A.V. Syssoev & al., 2010
Tanimbar Island, Arafura Sea



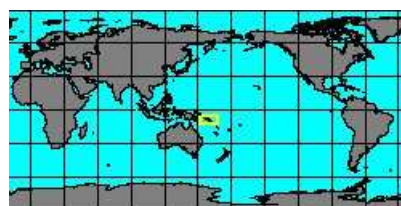
no
IMAGES
available

212010050
Bathytoma
oldhami
(E.A. Smith, 1899)
Indo-Pacific

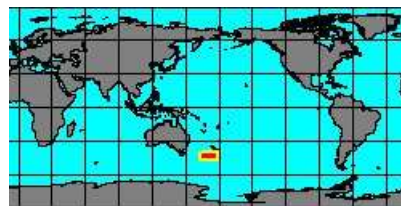
No Georeferenced data available



2140012726
Bathytoma
paratractoides
N. Puillandre, A.V. Sysoev, B.M. Olivera,
& P. Bouchet, 2010
Solomons Islands, Guadalcanal Island



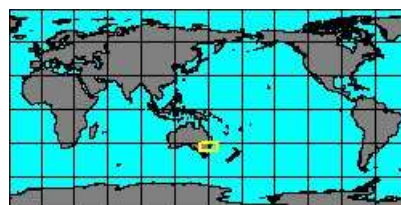
2128814465
Bathytoma
parengonia
(R.K. Dell, 1956)
New Zealand, South Island
22,4 mm



2120100025
Bathytoma
prodicia
R.N. Kilburn, 1986
Mozambique
39 mm



2128819095
Bathytoma
profundis
(C.F. Laseron, 1954)
Australia, Sydney
20 mm

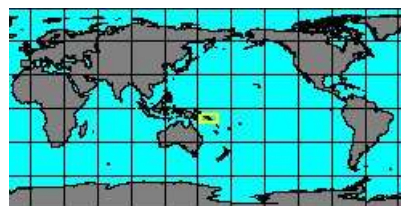


synonyms:

- *Micantapex profundis* C.F. Laseron, 1954



5346000059
Bathytoma
punicea
N. Puillandre, A.V. Sysoev, B.M. Olivera,
& al., 2010
Solomons Islands, Guadalcanal Island



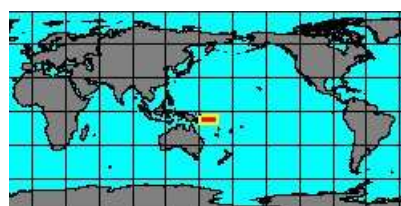
no
IMAGES
available

2128811665
Bathytoma
regnans
J.C. MeVill, 1918
Indo-Pacific

No Georeferenced data available



2140012966
Bathytoma
solomonensis
A.V. Sysoev, B.M. Olivera, Coulboux,
& P. Bouchet, 2010
Solomon Islands
36,1 mm

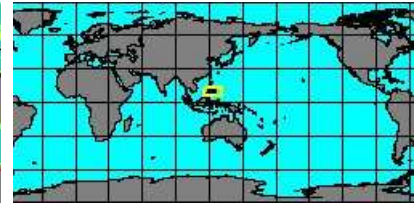




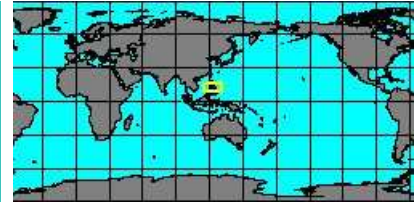
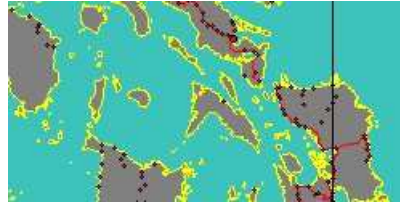
5346000476
Bathytoma somalica
 R. Ardovini, 2015
 Somalia, Mogadiscio
 45 mm



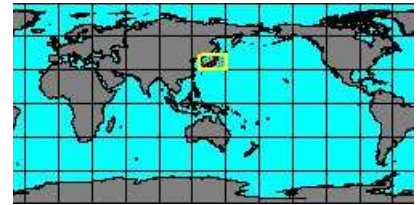
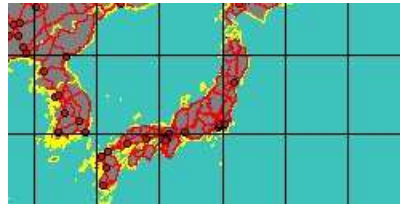
2140012730
Bathytoma stenos
 N. Puillandre, A.V. Sysoev,
 & P. Bouchet, 2010
 Philippines, Balicasag Island
 46,3 mm



2128812565
Bathytoma tippetti
 J.L. Vera-Peláez, 2004
 Philippines, Masbate Island
 44,7 mm



2128820915
Bathytoma tomuiensis
 F.S. MacNeil, 1960
 Japan



2140013185
Bathytoma tuckeri
 J.L. Vera-Peláez, 2004

No Georeferenced data available



2120100030
Bathytoma viabrunnea
 (W.H. Dall, 1889)
 Philippines, Balut Island
 56 mm



5346000060
Bathytoma virgo
 (T.A. Okutani, 1966)

No Georeferenced data available

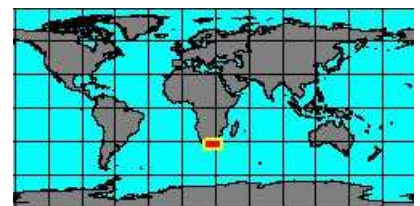
synonyms:

● Pleuromella virgo T.A. Okutani, 1966

● Gymnobela virgo T.A. Okutani, 1966



2120100035
Bathytoma visagei
 R.N. Kilburn, 1973
 South Africa
 64 mm



no
IMAGES
available

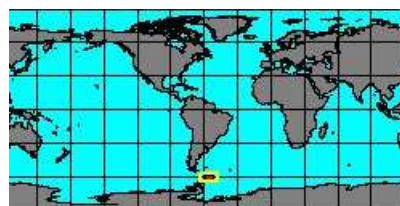
534600384
Bathytoma
visagei
decorata
R. Ardovini, 2015
Mozambique



Genus: Belaterrricula A. Powell, 1951 (6 SP, 4 IMG)



2128816205
Belaterrricula
antarctica
R.K. Dell, 1990
South Shetland Islands



no
IMAGES
available

2128816215
Belaterrricula
dissimilis
(R.B. Watson, 1886)
Indo-Pacific

No Georeferenced data available

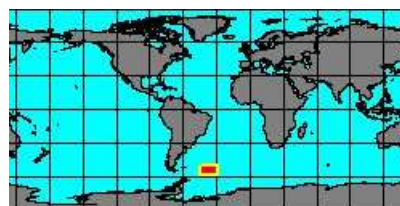
no
IMAGES
available

534600011
Belaterrricula
ergata
(C. Hedley, 1916)
Antarctica

No Georeferenced data available



2128816225
Belaterrricula
gaini
(É. Lamy, 1910)
South Georgia Island



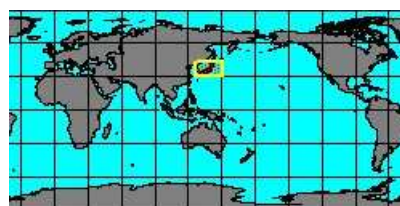
synonyms:

- *Colus gaini* É. Lamy, 1910

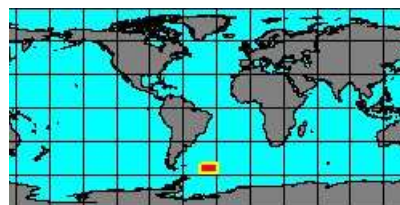
no
IMAGES
available

to be checked

2128821815
Belaterrricula
glabra
M. Yokoyama, 1920
Japan



2128816235
Belaterrricula
turrita
(H. Strebel, 1908)
South Georgia Island



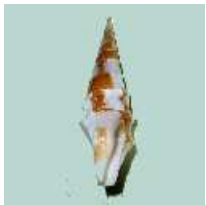
synonyms:

- *Bela turrita* H. Strebel, 1908

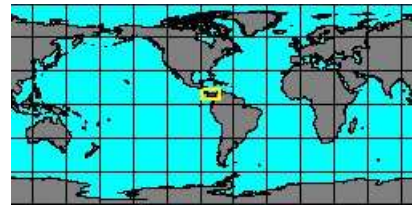
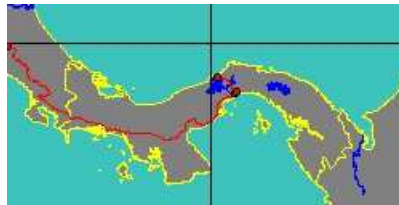


2128816245
Belaterrricula
turrita
multispiralis
R.K. Dell, 1990
Shetland Islands, Bransfield Strait





2128801985
Borsonella abrupta
J.H. McLean & L.H. Poorman, 1971
Panama
21,5 mm



2128818635
Borsonella agassizii
(W.H. Dall, 1908)
Galápagos Islands



2128801995
Borsonella barbarendis
W.H. Dall, 1919
America

No Georeferenced data available



2128818435
Borsonella bartschi
(R. Arnold, 1903)
San Nicholas Island, California



synonyms:

- *Borsonella civitela* W.H. Dall, 1919

- *Borsonella nicoli* W.H. Dall, 1919



2128802005
Borsonella callicesta
(W.H. Dall, 1902)
Acapulco, Mexico



synonyms:

- *Pleurotoma callicesta* W.H. Dall, 1902
- *Borsonellopsis esuriens* W.H. Dall, 1908

- *Borsonellopsis eidola* W.H. Dall, 1919
- *Borsonellopsis esuriens permoda* W.H. Dall, 1908



2120300005
Borsonella coronadoi
(W.H. Dall, 1908)
America

No Georeferenced data available

synonyms:

- *Borsonella nychia* W.H. Dall, 1919

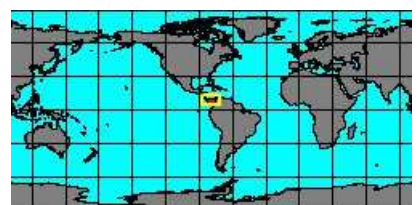


2120300010
Borsonella diegensis
(W.H. Dall, 1908)
America

No Georeferenced data available



2128802015
Borsonella erosina
(W.H. Dall, 1908)
Gulf of Panama



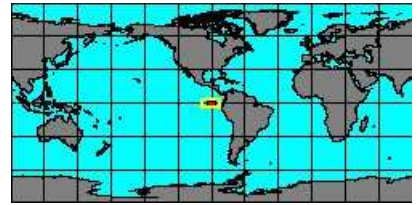
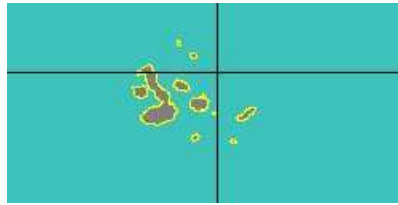
synonyms:

- *Leucosyrinx erosina* W.H. Dall, 1908



2128802025
Borsonella galapagana

J.H. McLean & L.H. Poorman, 1971
Galápagos Islands



2120300015
Borsonella merriami

R. Arnold, 1903

No Georeferenced data available



2120300030
Borsonella omphale

W.H. Dall, 1919
America

No Georeferenced data available



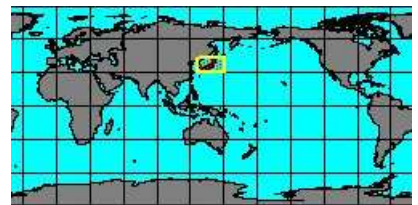
2120300035
Borsonella pinosensis

P. Bartsch, 1944
Point Pinos, California



2128820945
Borsonella shinzata

F.S. MacNeil, 1960
Japan



Genus: Borsonia L.M.D. Belardi, 1839 (syn: Boettgeriola - 15 SP, 3 IMG)



2128802045
Borsonia armata

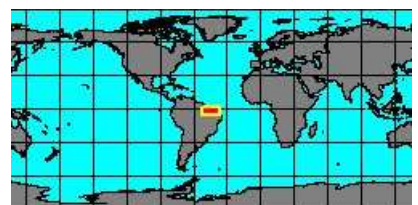
O. Böttger, 1895

No Georeferenced data available



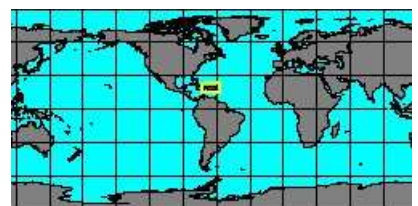
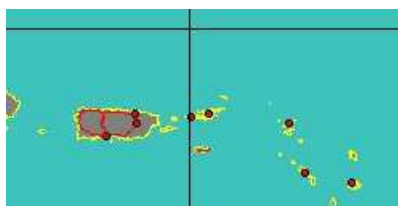
2128802055
Borsonia brasilia

D.L. Tippett, 1983
Brasil, Sao Luis



2128817535
Borsonia ceroplasta

(R.B. Watson, 1881)
Virgin Islands

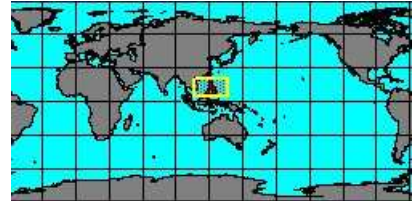


synonyms:

- *Pleurotoma ceroplasta* R.B. Watson, 1881

no
IMAGES
available

2128802065
**Borsonia
epigona**
E.C. Von Martens, 1901
Philippines



2128802075
**Borsonia
hironelleae**
(P. Dautzenberg, 1891)
Morocco
37,3 mm



synonyms:

- Pleurotoma circumcinctum É.A.A. Locard, 1897
- Leucosyrinx circumcinctum É.A.A. Locard, 1897
- Pleurotoma erraneum É.A.A. Locard, 1897
- Pleurotoma scitulum É.A.A. Locard, 1897

- Pleurotoma denudatum É.A.A. Locard, 1897
- Pleurotoma hironelleae P. Dautzenberg, 1891

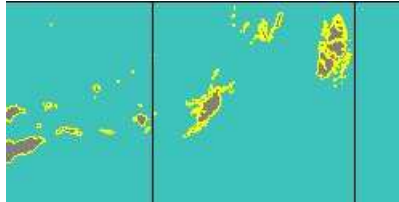
no
IMAGES
available

2128802085
**Borsonia
jaffa**
B.C. Cotton, 1947
Australia

No Georeferenced data available



2128802095
**Borsonia
jaya**
A.V. Sysoev, 1997
Indonesia, Tanimbar Islands
60,9 mm



no
IMAGES
available

2128802105
**Borsonia
ochracea**
K.H.J. Thiele, 1925
East Africa

No Georeferenced data available



2128817995
**Borsonia
pusilla**
(R.W. Dunker, 1871)
Canada
5 mm

No Georeferenced data available

synonyms:

- Clathurella pusilla R.W. Dunker, 1871

no
IMAGES
available

2128802035
**Borsonia
saccoi**
W.H. Dall, 1908
West America

No Georeferenced data available

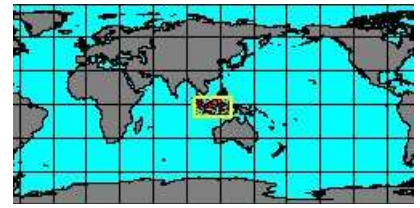
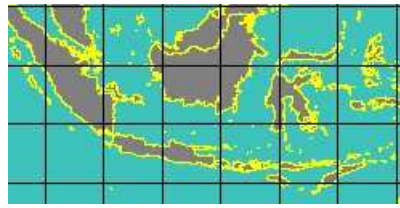
no
IMAGES
available

2128802115
**Borsonia
silicea**
(R.B. Watson, 1881)
East America

No Georeferenced data available

no
IMAGES
available

2128817635
**Borsonia
smithi**
M.M. Schepman, 1913
Indonesia



no
IMAGES
available

2128803415
**Borsonia
symbiophora**
A.V. Sysoev, 1996

No Georeferenced data available

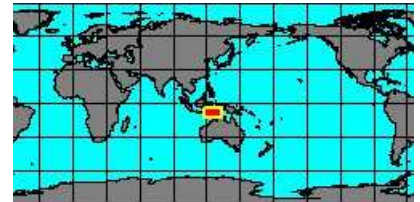
no
IMAGES
available

2128802135
**Borsonia
syngenes**
(R.B. Watson, 1881)

No Georeferenced data available

no
IMAGES
available

2128802145
**Borsonia
timorensis**
(M.M. Schepman, 1913)
Timor Est



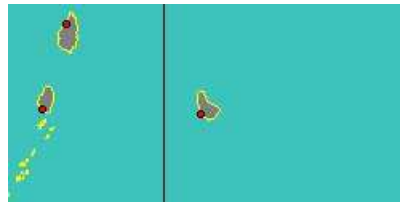
synonyms:

- *Surcula timorensis* M.M. Schepman, 1913

Genus: Cordieria M. Rouault, 1848 (syn: Phlyctaenia, Phlyctis - 1 SP, 0 IMG)

no
IMAGES
available

2128803405
**Cordieria
rouaultii**
(W.H. Dall, 1889)
Barbados



Genus: Darbya P. Bartsch, 1934. (1 SP, 1 IMG)



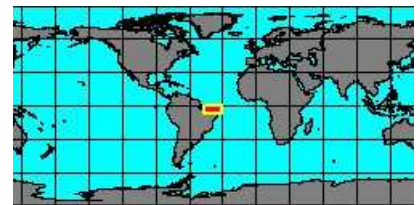
2128804635
**Darbya
lira**
P. Bartsch, 1934
Puerto Rico



Genus: Diptychophlia S.S. Berry, 1964 (syn: Diptychoplia - 2 SP, 2 IMG)



2128804645
**Diptychophlia
hubrechtii**
C.M. Cunha, 2005
Brasil, Fortaleza



2121300000
**Diptychophlia
occata**
(R.B. Hinds, 1843)
Bay of Panama
12,2 mm



Genus: **Drilliola** É.A.A. Locard, 1897 (4 SP, 2 IMG)



2121650000
Drilliola emendata
(T.A. de M. Monterosato, 1872)
Malta
5 mm



synonyms:

- Drilliola albatrossi F. Nordsieck, 1971
- Taranis albatrossi F. Nordsieck, 1971
- Taranis emendata T.A. de M. Monterosato, 1872
- Pleurotoma emendata atlantica É.A.A. Locard, 1897
- Drilliola albatrossi B. Sabelli, 1990
- Pleurotoma emendata T.A. de M. Monterosato, 1872



2128815705
Drilliola emendata atlantica
(É.A.A. Locard, 1897)

No Georeferenced data available



2121700005
Drilliola loprestiana
(P. Calcara, 1841)
Italy, Sicily channel
7 mm



synonyms:

- Raphitoma barbieri ⚡ Brusina, 1866
- Microdrilla barbieri ⚡ Brusina, 1866
- Drilliola comatotrops W.H. Dall, 1881
- Microdrilla loprestiana P. Calcara, 1841
- Taranis pulchella A.E. Verrill, 1880
- Pleurotoma tiara R.B. Watson, 1881
- Pleurotoma tricincta G.A. Brugnone, 1862
- Pleurotoma comatotrops W.H. Dall, 1881
- Pleurotoma loprestiana P. Calcara, 1841
- Drilliola moniliger F.J. Cantraine, 1835
- Pleurotoma tarentini R.A. Philippi, 1844
- Pleurotoma trecchi D.M. Testa, 1842



2128815715
Drilliola megalacme
(E.R. Sykes, 1906)
Europe

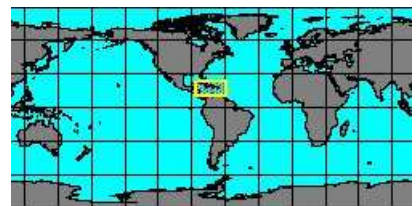
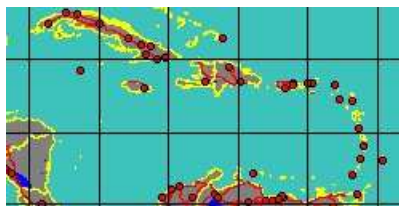
No Georeferenced data available

synonyms:

- Spirotrops megalacme E.R. Sykes, 1906



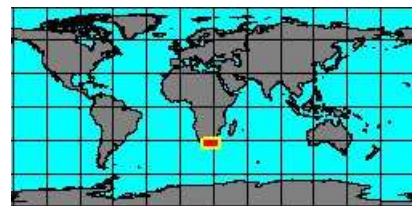
2128821175
Drilliola tiara
R.B. Watson, 1881
Caribbean



Genus: **Filodrillia** C. Hedley, 1922 (18 SP, 0 IMG)



5346000477
Filodrillia aikeni
P. Stahlschmidt, 2015
South Africa

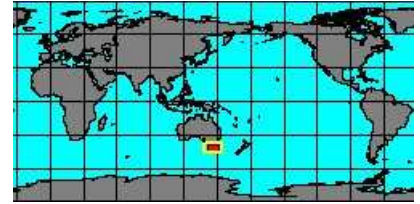


2128819515
Filodrillia angulifera
B.C. Cotton, 1947
W Australia

No Georeferenced data available

no
IMAGES
available

534600061
Filodrillia
columnaria
C. Hedley, 1922
Tasmania



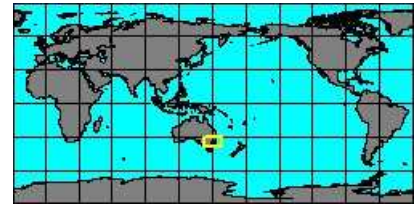
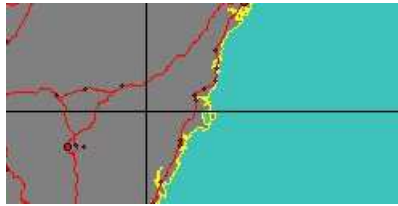
no
IMAGES
available

5346000188
Filodrillia
crebrespirata
(J.C. Verco, 1909)

No Georeferenced data available

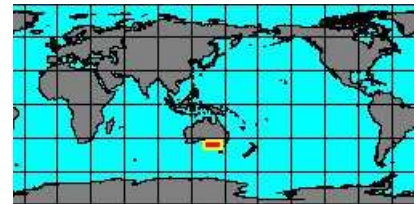
no
IMAGES
available

2122000010
Filodrillia
delicatula
C.F. Laseron, 1954
Australia, Crookhaven



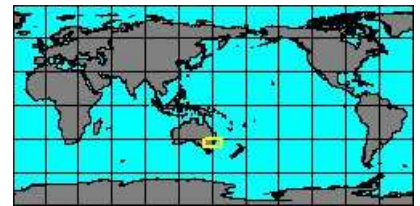
no
IMAGES
available

2122000015
Filodrillia
dulcis
(G.B. III Sowerby, 1896)
South Australia



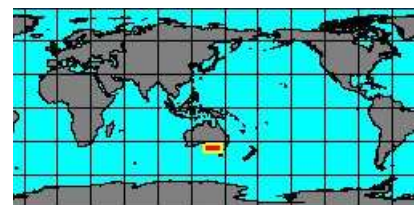
no
IMAGES
available

2122000020
Filodrillia
haswelli
(C. Hedley, 1907)
Australia, Sydney



no
IMAGES
available

2122000025
Filodrillia
lacteola
(J.C. Verco, 1909)
South Australia



synonyms:

- *Drillia lacteola* J.C. Verco, 1909

no
IMAGES
available

2128805855
Filodrillia
lacteola
sinusegens
J.C. Verco, 1909

No Georeferenced data available

to be checked

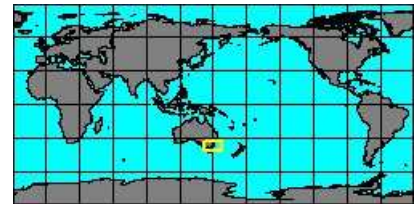
no
IMAGES
available

2128818375
Filodrillia
mucronata
C. Hedley, 1922
New South Wales, Australia



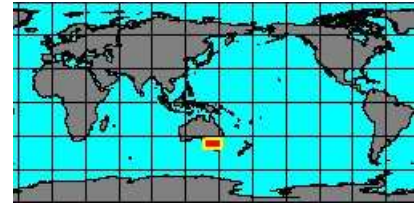
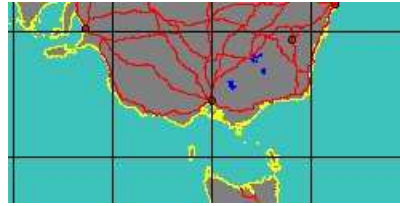
no
IMAGES
available

212200040
Filodrillia
ordinata
C.F. Laseron, 1954
Australia, Green Cape



no
IMAGES
available

2128817805
Filodrillia
ornata
C. Hedley, 1922
Victoria, Australia



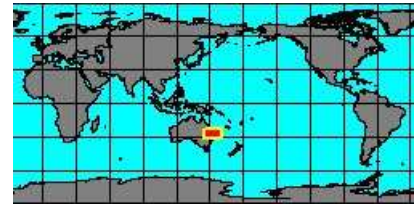
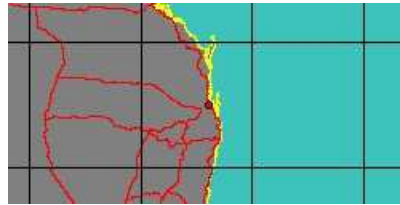
no
IMAGES
available

2128805875
Filodrillia
pergradata
B.C. Cotton, 1947

No Georeferenced data available

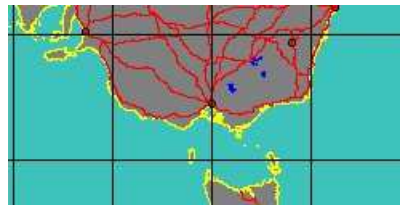
no
IMAGES
available

212200045
Filodrillia
stadialis
C. Hedley, 1922
Australia, Brisbane



no
IMAGES
available

2128818925
Filodrillia
teres
C.F. Laseron, 1954
Victoria, Australia



no
IMAGES
available

212200050
Filodrillia
thornleyana
C.F. Laseron, 1954
Port Stephens, Australia



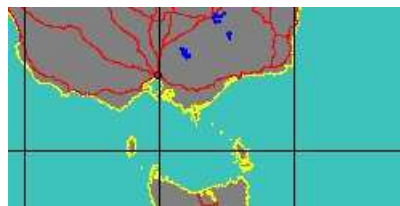
no
IMAGES
available

212200055
Filodrillia
tricarinata
(J.E. Tenison-Woods, 1878)
Tasmania



no
IMAGES
available

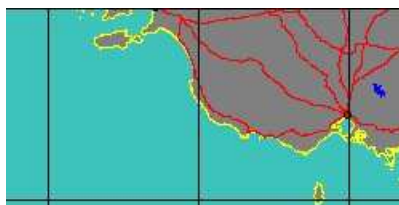
2128805885
Filodrillia
tricarinata
intermissa
(C.F. Laseron, 1954)
Bass Strait, Australia



to be checked

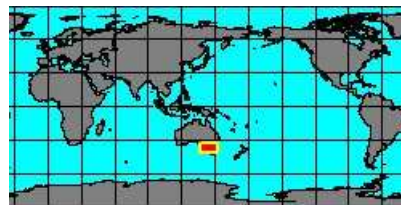
no
IMAGES
available

2122000065
Filodrillia
trophonoides
(J.C. Verco, 1909)
Beachport, Australia



no
IMAGES
available

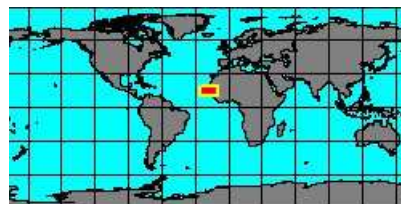
2128818755
Filodrillia
vitrea
C.F. Laseron, 1954
Victoria, Australia



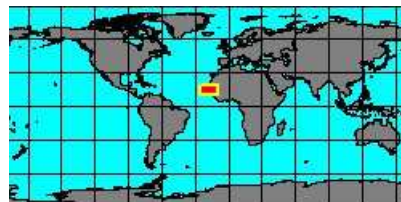
Genus: Genota H. Adams & A. Adams, 1853 (syn: Genota - 7 SP, 5 IMG)



2128823001
Genota
marchandi
M. Pin, 1996
Senegal
47 mm



2128820595
Genota
mitriformis
(W. Wood, 1828)
Senegal
44 mm

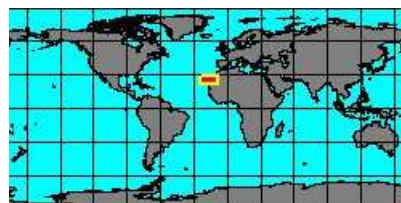


synonyms:

- Genota mitraeformis W. Wood, 1828
- Murex mitriformis W. Wood, 1828



2128805955
Genota
nicklesi
J. Knudsen, 1952
Western Sahara
28 mm



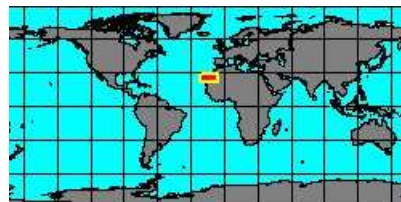
no
IMAGES
available

2140013189
Genota
nigeriensis
J.L. Vera-Peñáz, 2004

No Georeferenced data available



2128805965
Genota
papalis
(L.A. Reeve, 1843)
West Sahara
53 mm



no
IMAGES
available

2128805975
Genota
papillaris
(R.B. Hinds, 1843)

No Georeferenced data available

to be checked



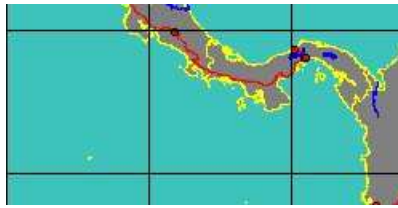
2128805985
Genota
vafra
E.R. Sykes, 1905
Senegal
30 mm



Genus: Glyptaesopus H.A. Pilsbry & A.A. Olsson, 1941 (4 SP, 3 IMG)



1933705718
Glyptaesopus
oldroydi
(R. Arnold, 1903)
Panama West
8,1 mm



1933703940
Glyptaesopus
phyllira
(W.H. Dall, 1919)
Panama West
6,5 mm



synonyms:

- Glyptaesopus amyela W.H. Dall, 1919
- Philbertia phyllira W.H. Dall, 1919



1930550000
Glyptaesopus
proctorae
(M. Smith, 1936)

No Georeferenced data available



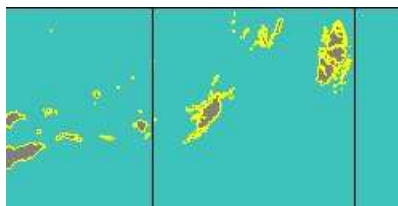
2128821985
Glyptaesopus
xenicus
(H.A. Pilsbry & H.N. Lowe, 1932)
Ecuador
6,9 mm



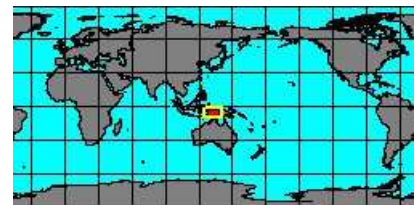
Genus: Heteroturris A. Powell, 1964 (3 SP, 2 IMG)



2128816305
Heteroturris
gemmuloides
A.V. Sysoev, 1997
Indonesia, Tanimbar Islands
40,4 mm



2128820345
Heteroturris
serta
A.V. Sysoev, 1997
Indonesia, Kai Island
9,3 mm



2128816325
Heteroturris
sola
A.W.B. Powell, 1967

No Georeferenced data available

Genus: **Maoritomella** A. Powell, 1942 (syn: Narraweena - 14 SP, 3 IMG)



2128820815
**Maoritomella
albula**
(F.W. Hutton, 1873)
New Zealand
7 mm



synonyms:

- Tomopleura albula F.W. Hutton, 1873
- Pleurotoma albula F.W. Hutton, 1873

- Maoritomella antipodum E.A. Smith, 1877



2128815805
**Maoritomella
batjanensis**
(M.M. Schepman, 1913)

No Georeferenced data available



2128815845
**Maoritomella
clupeispina**
R.N. Kilburn, 1986

No Georeferenced data available



2128815855
**Maoritomella
densecostulata**
R.N. Kilburn, 1986

No Georeferenced data available



2128815885
**Maoritomella
eva**
(K.H.J. Thiele, 1925)

No Georeferenced data available

synonyms:

- Bela eva K.H.J. Thiele, 1925



2128815895
**Maoritomella
foliacea**
C.F. Laseron, 1954
Broken Bay, Australia



2128820225
**Maoritomella
granilirata**
R.N. Kilburn, 1986
E Transkei, RSA

No Georeferenced data available



2140012894
**Maoritomella
ischna**
(R.B. Watson, 1881)
New Zealand



synonyms:

- Tomopleura ischna R.B. Watson, 1881
- Pleurotoma ischna R.B. Watson, 1881



2128815915
Maoritomella leptopleura
R.N. Kilburn, 1986

No Georeferenced data available

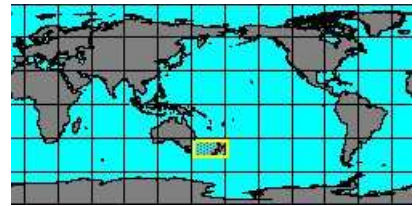


2128820855
Maoritomella megalacme
R.N. Kilburn, 1986
W Transkei, South Africa

No Georeferenced data available



2128815935
Maoritomella multiplex
(W.H. Webster, 1906)
New Zealand



synonyms:

- Tomopleura multiplex W.H. Webster, 1906
- Drilla multiplex W.H. Webster, 1906



2128819395
Maoritomella orientalis
R.K. Dell, 1956
New Zealand



2128815955
Maoritomella pleonastica
(K.H. Barnard, 1958)

No Georeferenced data available



2128816015
Maoritomella tarrhion
R.N. Kilburn, 1986

No Georeferenced data available

Genus: Micantapex T. Iredale, 1936 (1 SP, 1 IMG)



2128810085
Micantapex striatotuberculata
(M. Yokoyama, 1928)
East China Sea
56 mm



Genus: Microdrillia T.L. Casey, 1903 (syn: Acrobela, Acropota - 13 SP, 4 IMG)

no
IMAGES
available

2121700015
Microdrillia
circumvertens

(J.C. Melvill & R. Standen, 1901)

Indo-Pacific

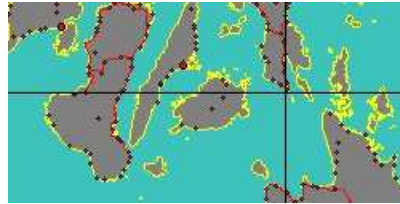
No Georeferenced data available



2121700020
Microdrillia
commentica

(C. Hedley, 1915)

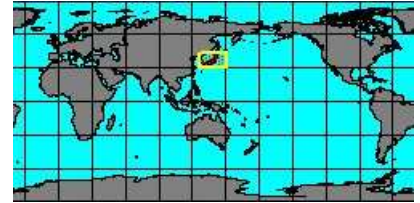
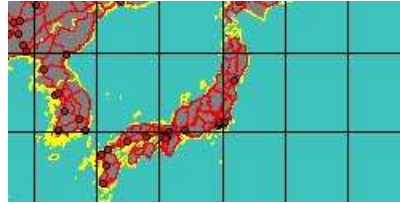
Philippines, Bohol
5,3 mm



2128823277
Microdrillia
difficilis

(E.A. Smith, 1879)

Japan
6 mm



no
IMAGES
available

2121700025
Microdrillia
dinos

R.N. Kilburn, 1986

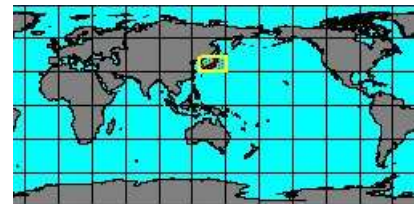
No Georeferenced data available

no
IMAGES
available

2128810105
Microdrillia
niponica

(E.A. Smith, 1879)

Japan



synonyms:

- Pleurotoma niponica E.A. Smith, 1879

no
IMAGES
available

2128810115
Microdrillia
optima

(K.H.J. Thiele, 1925)

Indo-Pacific

No Georeferenced data available

no
IMAGES
available

2121700035
Microdrillia
patricia

(J.C. Melvill, 1904)

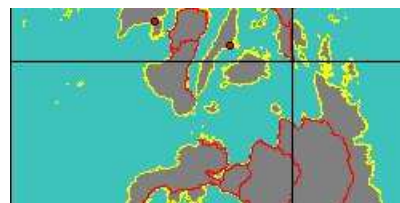
Florida



2121700010
Microdrillia
sagamiensis

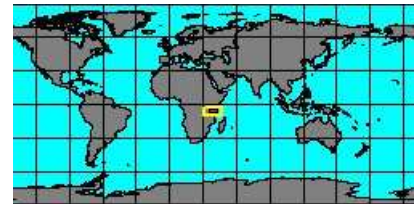
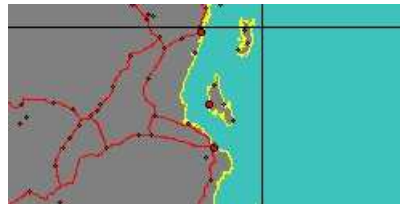
J.T. Kuroda, T. Habe & K. Oyama, 1971

Philippines, Siquijor Island
4,7 mm



no
IMAGES
available

2128810125
**Microdrillia
sansibarica**
(K.H.J. Thiele, 1925)
Zanzibar Island



synonyms:

- *Bela sansibarica* K.H.J. Thiele, 1925

no
IMAGES
available

2128810135
**Microdrillia
stephensis**
C.F. Laseron, 1954

No Georeferenced data available

synonyms:

- *Microdrilla stephensis* C.F. Laseron, 1954

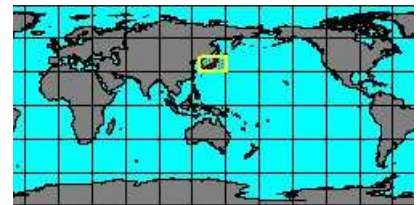


2128810145
**Microdrillia
trina**
W.C. Mansfield, 1925
Aruba
7,8 mm



no
IMAGES
available

2128810155
**Microdrillia
triporcata**
(E.A. Smith, 1879)
Japan



synonyms:

- *Pleurotoma triporcata* E.A. Smith, 1879

no
IMAGES
available

2128810165
**Microdrillia
zeuxippe**
(W.H. Dall, 1919)
Galápagos Islands



synonyms:

- *Taranis zeuxippe* W.H. Dall, 1919

Genus: Ophiodermella P. Bartsch, 1944 (10 SP, 6 IMG)

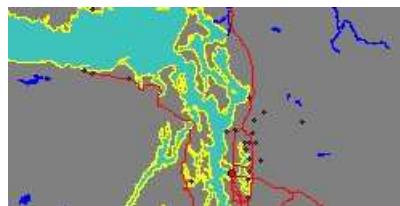
no
IMAGES
available

2128811545
**Ophiodermella
akkeshiensis**
(T. Habe, 1958)

No Georeferenced data available



2128817925
**Ophiodermella
cancellata**
(P.P. Carpenter, 1864)
Puget Sound, Washington



synonyms:

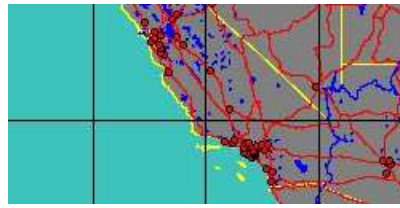
- *Ophiodermella rhines* W.H. Dall, 1908

- *Ophiodermella vancouverensis* E.A. Smith, 1880



212050000
Ophiodermella fancheriae

(W.H. Dall, 1903)
California, USA
29,3 mm



synonyms:

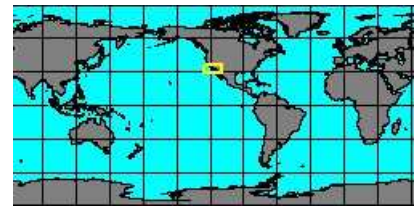
- *Drilla fancheriae* W.H. Dall, 1903

- *Mangilia fancheriae* W.H. Dall, 1903



2128811555
Ophiodermella grippi

(W.H. Dall, 1919)
San Diego, California
32,5 mm



synonyms:

- *Pseudomelatomia grippi* W.H. Dall, 1919

- *Ophiodermella martinensis* W.H. Dall, 1919



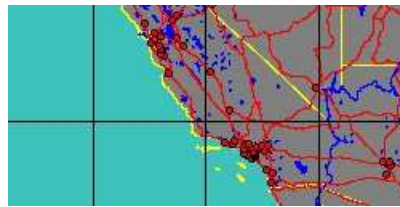
2120500005
Ophiodermella halcyonis

W.H. Dall, 1908
California



2120500010
Ophiodermella inermis

(L.A. Reeve, 1843)
California
34 mm



synonyms:

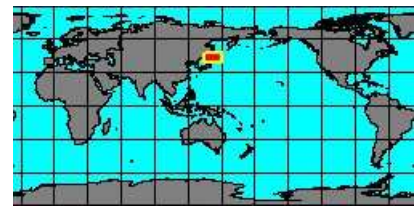
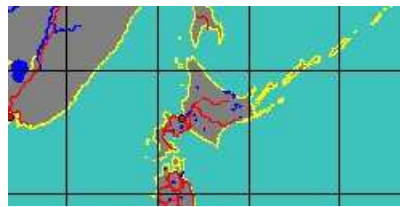
- *Ophiodermella incisa* P.P. Carpenter, 1864
- *Pleurotoma inermis* L.A. Reeve, 1843
- *Pleurotoma ophioderma* W.H. Dall, 1908

- *Drilla incisa* P.P. Carpenter, 1864
- *Ophiodermella montereyensis* P. Bartsch, 1944
- *Ophiodermella ophioderma* W.H. Dall, 1908



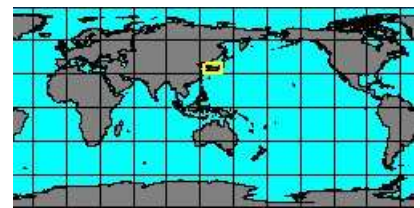
2128811565
Ophiodermella miyatensis

(M. Yokoyama, 1920)
Japan, Hokkaido
26,3 mm



2128811575
Ophiodermella ogurana

(M. Yokoyama, 1922)
Japan, Shimane



2128811585
Ophiodermella pseudopannus

(M. Yokoyama, 1922)

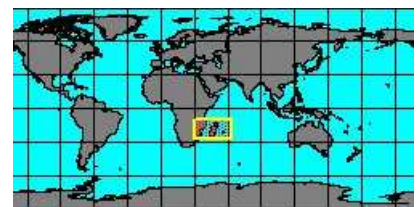
No Georeferenced data available

to be checked



2128821035
Ophiodermella psilarosus

K.H. Barnard, 1958
Madagascar
33,2 mm



Genus: Paraborsonia H.A. Pilsbry, 1922 (1 SP, 1 IMG)



2128811675
**Paraborsonia
lindae**

E.J. Petuch, 1987
Tobago Island
25 mm



Genus: Phenatoma H.J. Finlay, 1924 (3 SP, 3 IMG)



2121754000
**Phenatoma
novaezelandiae**

(L.A. Reeve, 1843)
New Zealand, Mercury Bay



2128823181
**Phenatoma
rosea**

(J.R.C. Quoy & J.P. Gaimard, 1833)
New Zealand, Auckland
24 mm



synonyms:

● *Pleurotoma novaezelandiae* L.A. Reeve, 1843

● *Pleurotoma rosea* J.R.C. Quoy & J.P. Gaimard, 1833



2128815725
**Phenatoma
zealandica**

(E.A. Smith, 1877)
Hawaii
27 mm



synonyms:

● *Phenatoma cheesemani* F.W. Hutton, 1882

● *Pleurotoma zealandica* E.A. Smith, 1877

Genus: Pulsarella C.F. Laseron, 1954 (4 SP, 4 IMG)



5346000186
**Pulsarella
clevei**

(F.P. Jousseaume, 1883)
Sri Lanka
9,1 mm



2128815745
**Pulsarella
cognata**

(E.A. Smith, 1877)
Australia, Coffs Harbour
20 mm



synonyms:

● *Pleurotoma cognata* E.A. Smith, 1877



2121800000
**Pulsarella
fultoni**

(G.B. III Sowerby, 1888)
South Africa, Jeffreys Bay
27 mm



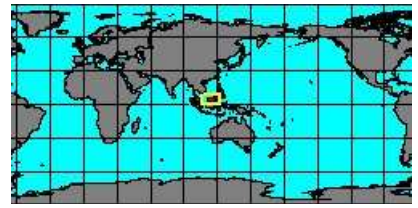
synonyms:

● *Tomopleura fultoni* G.B. III Sowerby, 1888

● *Pleurotoma fultoni* G.B. III Sowerby, 1888



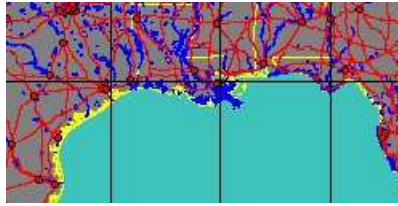
2128815755
**Pulsarella
 komakimonos**
 (Y. Otuka, 1935)
 Brunei
 28,3 mm



Genus: Retidrillia J.H. McLean, 2000 (2 SP, 1 IMG)



2121650005
**Retidrillia
 pruina**
 (R.B. Watson, 1881)
 USA, Louisiana

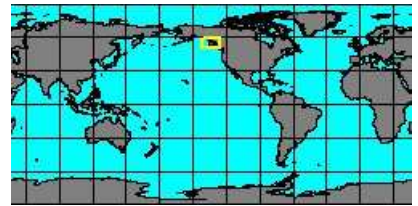


synonyms:

- Drillola pruina (R.B. Watson, 1881)
- Pleurotoma pruina R.B. Watson, 1881
- Drillola tanneri A.E. Verrill & S. Smith, 1884



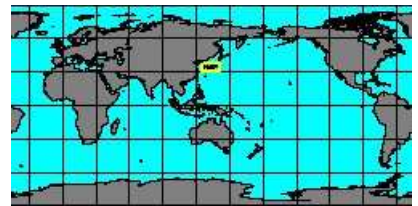
2140012777
**Retidrillia
 willetti**
 (W.H. Dall, 1919)
 Alaska, Forrester Island



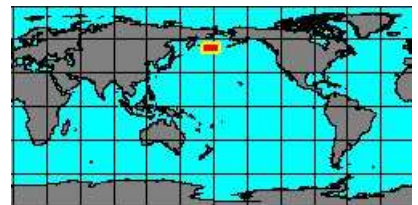
Genus: Suavodrillia W.H. Dall, 1918 (3 SP, 1 IMG)



2128820695
**Suavodrillia
 declivis**
 (E.C. Von Martens, 1880)
 Japan, Kochi



2121850000
**Suavodrillia
 kennicotti**
 (W.H. Dall, 1871)
 Tanadak Pass, Alaska



synonyms:

- Drilla kennicotti W.H. Dall, 1871



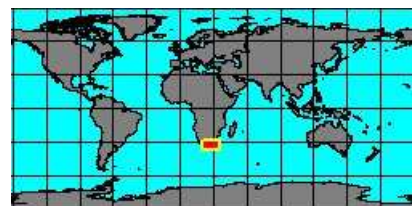
2128815785
**Suavodrillia
 textilia**
 W.H. Dall, 1927
 America

No Georeferenced data available

Genus: Tomopleura T.L. Casey, 1904 (21 SP, 13 IMG)

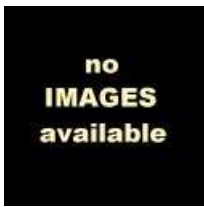


5346000184
**Tomopleura
 bellardii**
 (F.P. Jousseume, 1883)
 South Africa
 11 mm



synonyms:

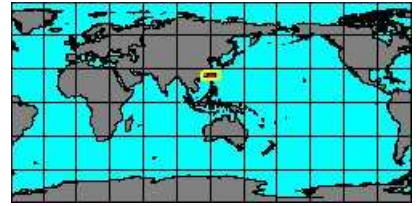
- Oligotoma bellardi F.P. Jousseume, 1883



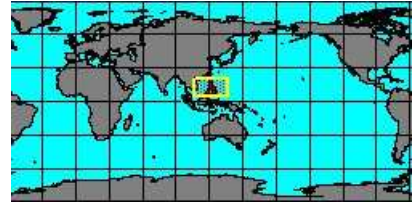
2128815825
Tomopleura
carrota
 (C.F. Laseron, 1954)
 Port Stephens, Australia



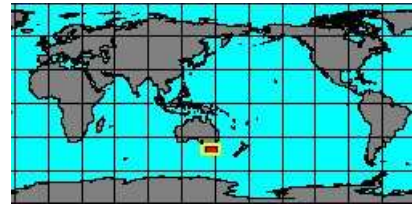
2128815835
Tomopleura
cicatrigula
 (C. Hedley, 1922)
 Taiwan
 15 mm



2128817945
Tomopleura
coffea
 (K.H.J. Thiele, 1925)
 Philippines



2128819805
Tomopleura
dilecta
 (C. Hedley, 1903)
 Tasmania



synonyms:

- *Drilia dilecta* C. Hedley, 1903



2128815875
Tomopleura
dilecta
parabola
 (J.C. Verco, 1909)

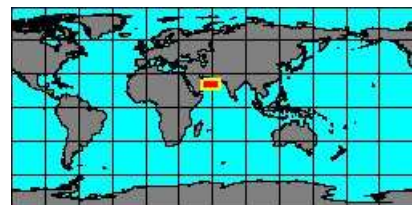
No Georeferenced data available



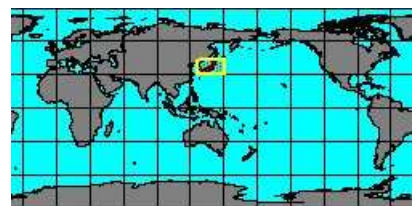
2128823336
Tomopleura
fuscocincta
 S. Gofas & E. Rolán, 2009
 Mauritania
 13 mm



2128823345
Tomopleura
makemonos
 (F.P. Jousseume, 1883)
 Oman
 26,8 mm



2121900000
Tomopleura
nivea
 (R.A. Philippi, 1851)
 Japan
 32,1 mm



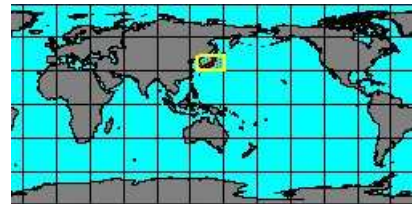
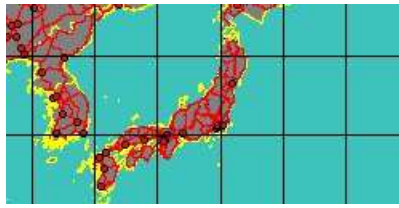
synonyms:

- *Tomopleura makimonos* F.P. Jousseume, 1883
- *Pleurotoma makimonos* F.P. Jousseume, 1883

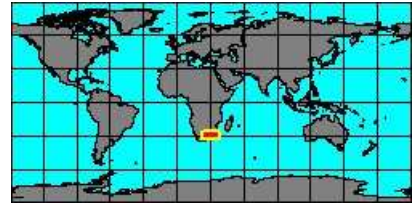
- *Pleurotoma nivea* R.A. Philippi, 1851



2128821205
Tomopleura
notoensis
Y. Otuka, 1935
Japan



2121900005
Tomopleura
oscitans
R.N. Kilburn, 1986
South Africa, Natal, Durban Bay
21,7 mm



2121904000
Tomopleura
pouloensis
(F.P. Jousseaume, 1883)
Sri Lanka
12 mm

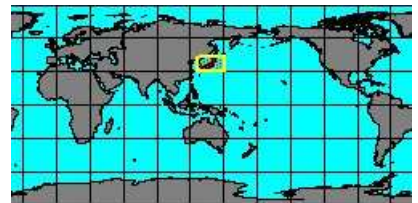


synonyms:

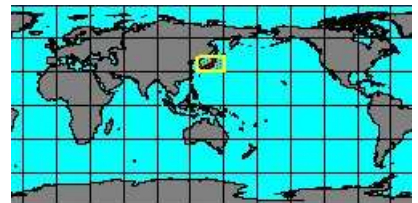
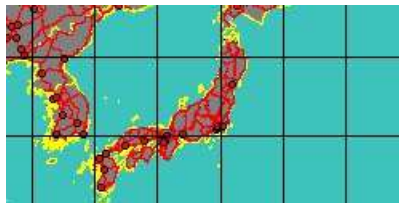
- Tomopleura vallata A.A. Gould, 1860



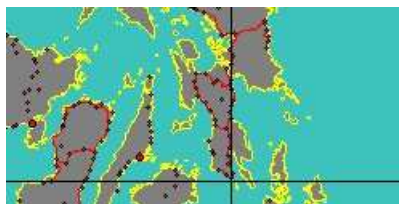
2128821215
Tomopleura
quantoana
M. Yokoyama, 1920
Japan



2128815965
Tomopleura
reciproca
(A.A. Gould, 1860)
Japan



2128815975
Tomopleura
reevii
(C.B. Adams, 1850)
Philippines, Leyte Island
14,2 mm



synonyms:

- Tomopleura reevei C.B. Adams, 1850
- Pleurotoma reevi C.B. Adams, 1850
- Turris violacea R.B. Hinds, 1843
- Pleurotoma violacea R.B. Hinds, 1843
- Tomopleura weinkauffi H.C. Weinkauff & W. Kobelt, 1875



2128815985
Tomopleura
regina
(K.H.J. Thiele, 1925)
Zanzibar



2128815995
Tomopleura
retusispirata
(E.A. Smith, 1877)

No Georeferenced data available

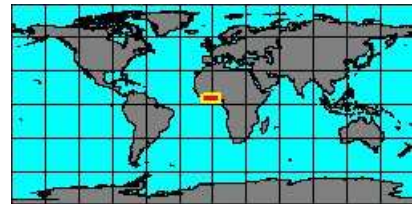
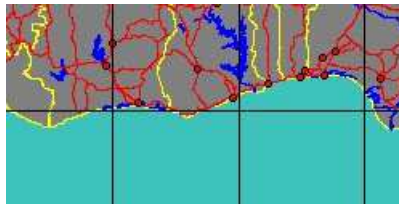
synonyms:

- Pleurotoma retusispirata E.A. Smith, 1877



2128823335
Tomopleura spiralissima
S. Gofas & E. Rolán, 2009

Ghana
14 mm

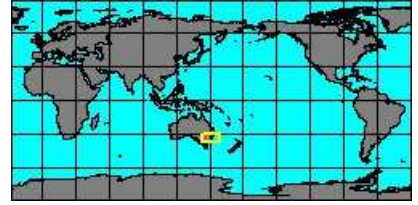


synonyms:

- Pleurotoma spiralis E.A. Smith, 1872
- Tomopleura spiralis E.A. Smith, 1872



2128816005
Tomopleura subtilinea
(C. Hedley, 1918)
Nelson Bay, Australia
23 mm

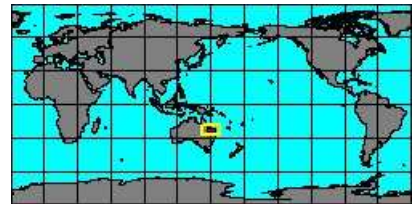
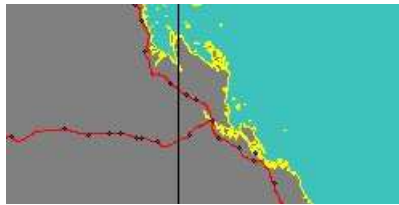


synonyms:

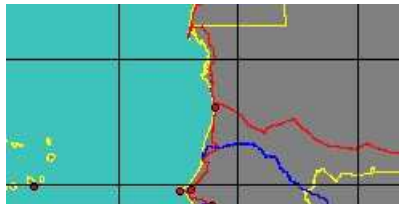
- Maoritomella vertebrata J.L. Bouge & P. Dautzenberg, 1914



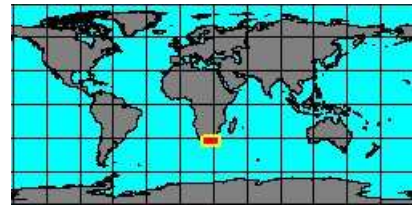
2128816035
Tomopleura thola
(C.F. Laseron, 1954)
Australia, Livingstone



2128823337
Tomopleura tricincta
S. Gofas & E. Rolán, 2009
Mauritania
11 mm



2128816045
Tomopleura vertebrata
(E.A. Smith, 1875)
South Africa
19 mm



synonyms:

- Pleurotoma vertebrata E.A. Smith, 1875

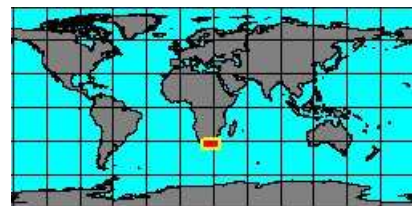
Genus: Tropidoturris R.N. Kilburn, 1986 (6 SP, 5 IMG)



2120550000
Tropidoturris anaglypta
R.N. Kilburn, 1986
South Africa, Natal, Durban Bay
10,6 mm



2120550020
Tropidoturris fossata
(G.B. III Sowerby, 1903)
South Africa
12,1 mm

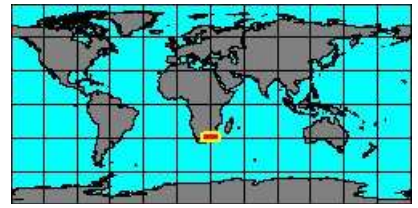


synonyms:

- Drilia fossata G.B. III Sowerby, 1903
- Pleurotoma fossata G.B. III Sowerby, 1903



2120550005
**Tropidoturris
fossata
notialis**
R.N. Kilburn, 1986
South Africa, Natal, Richards Bay
21,2 mm



2120550035
**Tropidoturris
planilirata**
R.N. Kilburn, 1986

No Georeferenced data available



2120550010
**Tropidoturris
scitecostata**
(G.B. III Sowerby, 1903)
South Africa, Agulhas Bank
26,4 mm



synonyms:

- *Tropidoturris opulenta* K.H.J. Thiele, 1925
- *Pleurotoma scitecosta* G.B. III Sowerby, 1903

- *Tropidoturris scitecostata* G.B. III Sowerby, 1903



2120550015
**Tropidoturris
simplicingula**
(K.H. Barnard, 1958)
South Africa, East London
15,5 mm

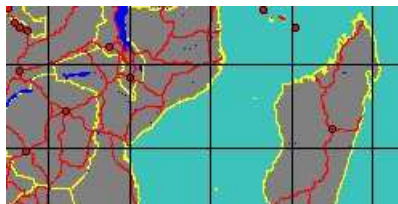


2128815115
**Tropidoturris
simplicingula
pondo**
R.N. Kilburn, 1986

No Georeferenced data available



5346000242
**Tropidoturris
vizcondei**
M. Morassi & A. Bonfitto, 2013
Mozambique Channel



Genus: Typhlodaphne A. Powell, 1951 (8 SP, 4 IMG)



2128815215
**Typhlodaphne
corpulenta**
(R.B. Watson, 1881)
Antarctica

No Georeferenced data available

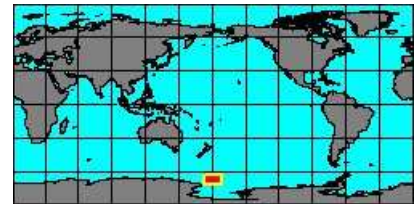
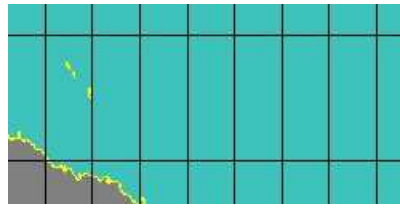


2128822895
**Typhlodaphne
filostriata**
(H. Strebel, 1905)
Antarctica

No Georeferenced data available



2128815225
Typhlodaphne innocentia
R.K. Dell, 1990
Ross sea
6 mm

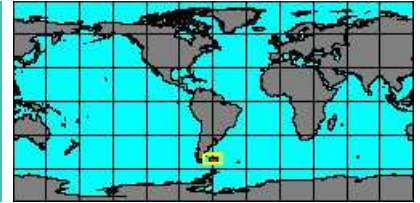
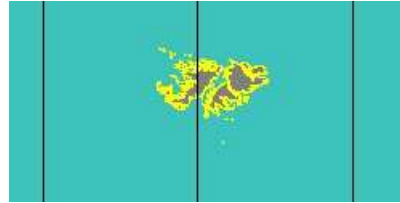


2140012865
Typhlodaphne nipri
H. Numanami, 1996
Antarctica

No Georeferenced data available



2140012785
Typhlodaphne payeni
(A. de Rochebrune & J.F. Mabile, 1885)
Fakland Islands
9,1 mm



synonyms:

- *Daphnela payeni* A. de Rochebrune & J.F. Mabile, 1885

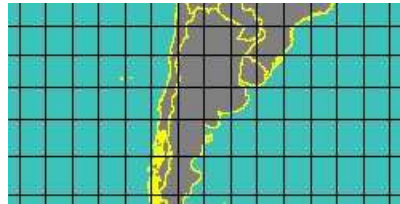


2128815235
Typhlodaphne platamodes
(R.B. Watson, 1881)
Antarctica

No Georeferenced data available



2128000000
Typhlodaphne purissima
(H. Strebel, 1908)
Argentina
17 mm

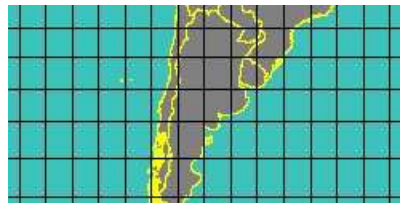


synonyms:

- *Mangela purissima* H. Strebel, 1908



2140012817
Typhlodaphne strebeli
A.W.B. Powell, 1951
Argentina
27 mm



Genus: Typhlomangelia G.O. Sars, 1878 (syn: Vexithara - 10 SP, 1 IMG)



5346000358
Typhlomangelia adenica
A.V. Sysoev, 1996

No Georeferenced data available



5346000063
Typhlomangelia brevicanalís
T. Shuto, 1983

No Georeferenced data available

synonyms:

- *Typhlomangela brevicanalís* T. Shuto, 1983

no
IMAGES
available

5335000028
Typhlomangelia
cariosa
(R.B. Watson, 1886)

No Georeferenced data available

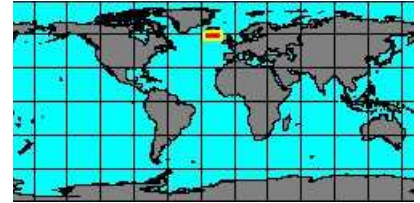
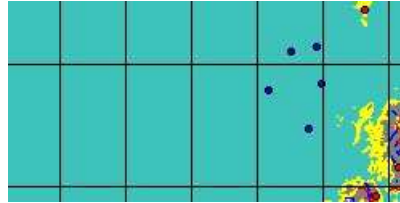
no
IMAGES
available

2128815265
Typhlomangelia
fluctuosa
(R.B. Watson, 1881)
Antarctica

No Georeferenced data available

no
IMAGES
available

2128815275
Typhlomangelia
lincta
(R.B. Watson, 1881)
North Atlantic



no
IMAGES
available

2128820185
Typhlomangelia
maldivica
A.V. Sysoev, 1996
Maldives



2120600000
Typhlomangelia
nivalis
(S.L. Lovén, 1846)
Western Sahara
8 mm



synonyms:

- Pleurotoma compospira P. Dautzenberg & H. Fischer, 1896
- Pleurotoma compospira P. Dautzenberg & H. Fischer, 1896
- Pleurotoma nexosula B. Šabellj, 1990
- Pleurotoma nexosulum É.A.A. Locard, 1897
- Pleurotoma nivalis S.L. Lovén, 1846
- Pleurotoma vacantivum É.A.A. Locard, 1897

- Pleurotoma neotericum É.A.A. Locard, 1897
- Pleurotoma nexosulum É.A.A. Locard, 1897
- Typhlomangelia nivale S.L. Lovén, 1846
- Pleurotoma peregrinum É.A.A. Locard, 1897

no
IMAGES
available

2128815295
Typhlomangelia
polythele
K.H. Barnard, 1963
South Africa



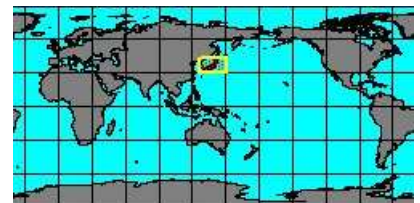
no
IMAGES
available

2128815305
Typhlomangelia
principalis
K.H.J. Thiele, 1912
Antarctica

No Georeferenced data available

no
IMAGES
available

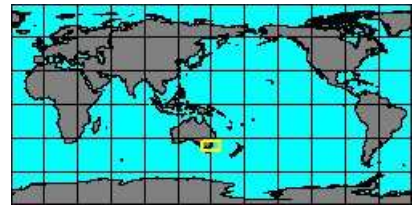
2128815315
Typhlomangelia
pyrrha
(R.B. Watson, 1881)
Japan



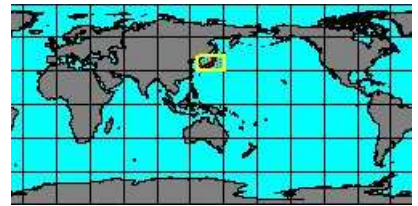
Genus: Viridoturris A. Powell, 1964 (2 SP, 1 IMG)



2128816645
**Viridoturris
corona**
(C.F. Laseron, 1954)
Australia, Green Cape



2128822905
**Viridoturris
feris**
J.T. Kuroda & K. Oyama, 1971
Japan
7,6 mm



Genus: Zemacies H.J. Finlay, 1926 (2 SP, 2 IMG)



2115510900
**Zemacies
excelsa**
A.V. Sysoev & P. Bouchet, 2001
New Caledonia
49,8 mm



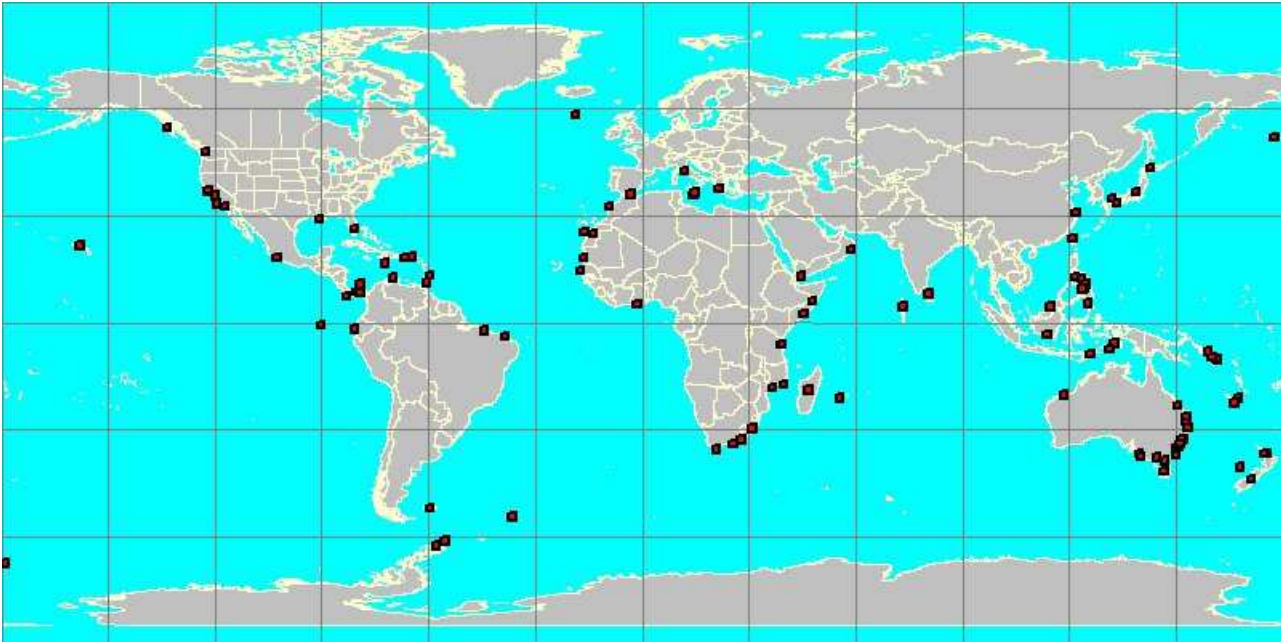
2114154000
**Zemacies
queenslandica**
(A.W.B. Powell, 1969)
Australia, Cape Moreton
58 mm



synonyms:

- *Turris queenslandis* A.W.B. Powell, 1969
- *Leucosyrinx queenslandis* A.W.B. Powell, 1969

Family: BORSONIIDAE



red squares show where each species has been georeferenced

each square has a size of 2 degrees

an interactive version of this image can be accessed at

<http://www.bagniliggia.it/WMSD/FamilyMap/BORSONIIDAEmap.htm>

please note that this is not the complete coverage of this family

the Data Base is not exhaustive and only one specimen per species has been georeferenced

this map is only the graphic summary of the WMSDB Data Base up to now

the total number of georeferenced species in this map is: 170 from a total of 244