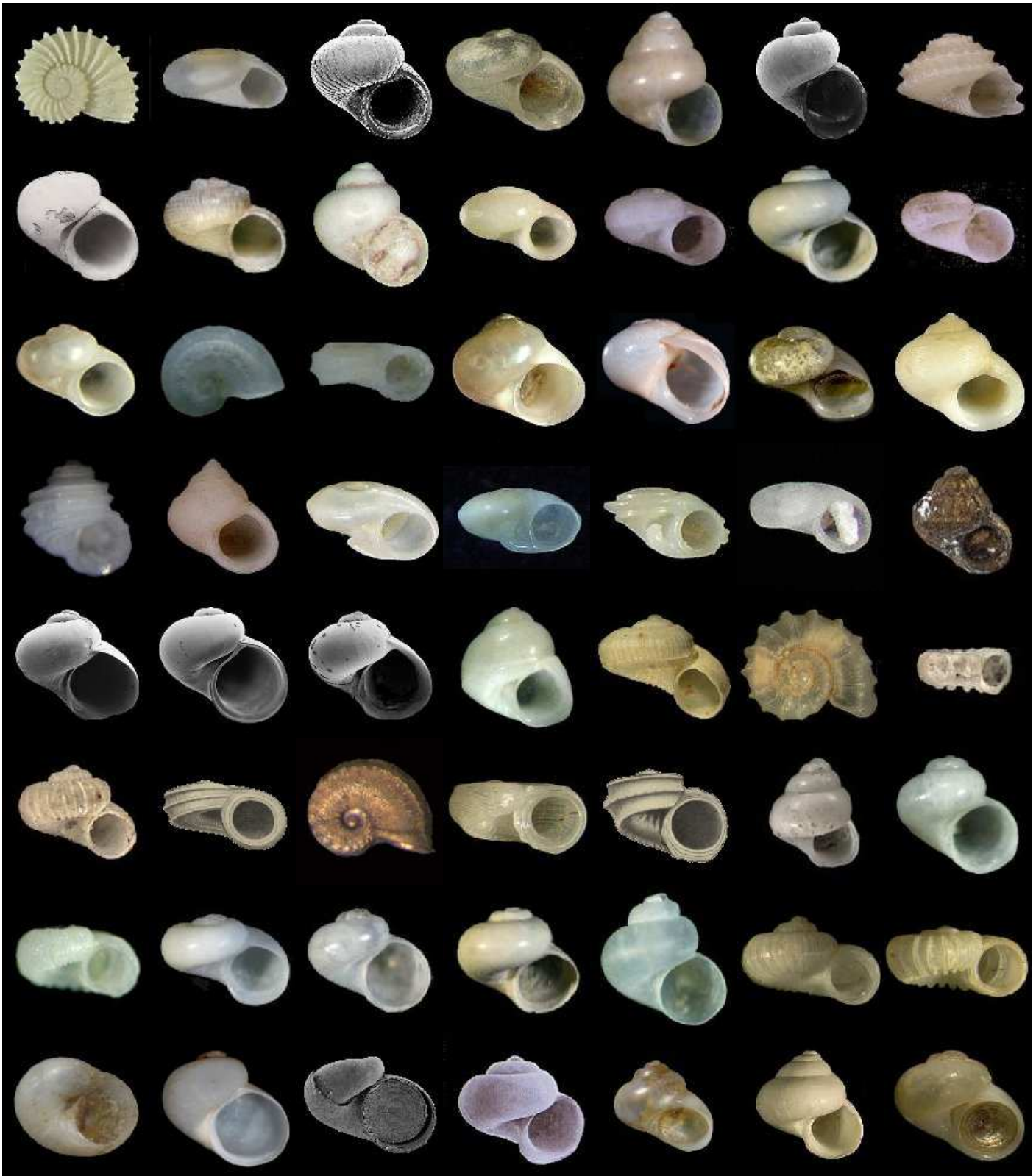


WMSDB - Worldwide Mollusc Species Data Base



Family: SKENEIDAE

Author: Claudio Galli - claudio@bagniliggia.it (updated 07/set/2015)

Class: GASTROPODA**--- Clade: VETIGASTROPODA-TROCHOIDEA****----- Family: SKENEIDAE** Clark, 1851 (Sea)- Alphabetic order - when **first name** is in bold the species has images

Taxa=379, Genus=32, Subgenus=2, Species=260, Subspecies=3, Synonyms=81, Images=113

- abyssicola, [Lissospira abyssicola](#) K.J. Bush, 1897
- acuticostatus, [Parviturbo acuticostatus](#) (P.P. Carpenter, 1864)
- adamsi, Cirsonella adamsi J.G. Jeffreys, 1883 - syn of: [Cirsonella romettensis](#) (J. Granata Grillo, 1877)
- africana, [Lodderia africana](#) P. Bartsch, 1915
- agulhaensis, [Parviturbo agulhaensis](#) (K.H.J. Thiele, 1925)
- alboranensis, [Parviturbo alboranensis](#) A. Peñas & E. Rolán, 2006
- alderi, Dikoleps alderi J.G. Jeffreys, 1865 - syn of: [Dikoleps nitens](#) (R.A. Philippi, 1844)
- alfredensis, [Parviturbo alfredensis](#) P. Bartsch, 1915
- alfredensis, Pondorbis alfredensis P. Bartsch, 1915 - syn of: [Parviturbo alfredensis](#) P. Bartsch, 1915
- alta, Callomphala alta C.F. Laceron, 1954 - syn of: [Callomphala lucida](#) (A. Adams & G.F. Angas, 1864)
- ammonoceras, [Munditiella ammonoceras](#) (A. Adams, 1863)
- annejoffeae, [Parviturbo annejoffeae](#) F. Rubio, E. Rolán & Lee, 2015
- annulata, [Liotella annulata](#) (J.E. Tenison-Woods, 1874)
- anxia, [Liotella anxia](#) (C. Hedley, 1909)
- arawakorum, [Haplocochlias arawakorum](#) F. Rubio & E. Rolán, 2015
- areolata, [Skenea areolata](#) (G.O. Sars, 1878)
- areolatum, Skenea areolatum G.O. Sars, 1878 - syn of: [Skenea areolata](#) (G.O. Sars, 1878)
- arrondoi, [Haplocochlias arrondoi](#)
- ateles, [Cirsonella ateles](#) (P. Dautzenberg & H. Fischer, 1896)
- athlia, [Bruceiella athlia](#) A. Warén & P. Bouchet, 2001
- atomus, [Ganesa atomus](#) H.A. Pilsbry & A.A. Olsson
- aupouria, [Liotella aupouria](#) A.W.B. Powell, 1937
- australis, Cirsonella australis G.F. Angas, 1877 - syn of: [Cirsonella weldii](#) (J.E. Tenison-Woods, 1877)
- azoricus, [Parviturbo azoricus](#) F. Rubio, E. Rolán & W. Segers, 2015
- basistriata, [Skenea basistriata](#) (J.G. Jeffreys, 1877)
- bathycodon, [Theyaspira bathycodon](#) Nye, P.R. Copley, K. Linse & Plouviez, 2013
- bellus, [Haplocochlias bellus](#) (W.H. Dall, 1889)
- benthicola, [Zalipais benthicola](#) A.W.B. Powell, 1927
- benthicola, [Tasmocrossea benthicola](#) R.K. Dell, 1952
- bicarinata, [Leucorhynchia bicarinata](#) W. Adam & J. Knudsen, 1969
- bieleri, [Haplocochlias bieleri](#)
- billfranki, [Parviturbo billfranki](#) F. Rubio, E. Rolán & Lee, 2015
- bithynoides, [Lissomphalia bithynoides](#) (T.A. de M. Monterosato, 1880)
- bithynoides, Lissospira bithynoides J.G. Jeffreys, 1883 - syn of: [Lissomphalia bithynoides](#) (T.A. de M. Monterosato, 1880)
- blancha, [Partubiola blancha](#) T. Iredale, 1936
- boucheti, [Parviturbo boucheti](#)
- brasiliensis, [Parviturbo brasiliensis](#) F. Rubio, E. Rolán & Lee, 2015
- bruniense, [Zalipais bruniense](#) (R.H. Beddome, 1885)
- bujnitzkii, [Lissospira bujnitzkii](#) (G.P. Gorbunov, 1946)
- bujnitzkii, Skenea bujnitzkii G.P. Gorbunov, 1946 - syn of: [Lissospira bujnitzkii](#) (G.P. Gorbunov, 1946)
- bunnelli, [Lodderena bunnelli](#) C. Redfern & E. Rolán, 2005
- bushae, [Lissospira bushae](#) (W.H. Dall, 1927)
- bythinoides, [Skenea bythinoides](#) J.G. Jeffreys, 1875
- caledonica, [Leucorhynchia caledonica](#) J.C.H. Crosse, 1867
- calidimaris, [Haplocochlias calidimaris](#) (H.A. Pilsbry & J.T.L. McGinty, 1945)
- californica, [Skenea californica](#) (P. Bartsch, 1907)
- cancellata, [Liotella cancellata](#) (C.F.F. von Krauss, 1848)
- candida, [Leucorhynchia candida](#) (C.B. Adams, 1862)
- capitata, [Liotella capitata](#) (C. Hedley, 1907)
- carinata, [Cirsonella carinata](#) (C. Hedley, 1903)
- carmelensis, [Skenea carmelensis](#) A.G. Smith & W.J. Gordon, 1948
- catenoides, [Skenea catenoides](#) (T.A. de M. Monterosato, 1877)
- cerion, [Mikro cerion](#) (W.H. Dall, 1927)
- christopheri, [Haplocochlias christopheri](#) F. Rubio & E. Rolán, 2015
- coatsiana, [Lodderia coatsiana](#) (J.C. Melville & R. Standen, 1912)
- compacta, [Liotella compacta](#) (W.F. Petterd, 1884)
- compactus, [Haplocochlias compactus](#) (W.H. Dall, 1889)

- comptus, [Parviturbo comptus](#) (W.P. Woodring, 1928)
- conceptionensis, [Haplocochlias conceptionensis](#) (H.N. Lowe, 1933)
- concordia, [Skenea concordia](#) (P. Bartsch, 1920)
- conica, [Lissospira conica](#) (W.H. Dall, 1927)
- conica, Ganesa conica W.H. Dall, 1927 - syn of: [Lissospira conica](#) (W.H. Dall, 1927)
- consobrina, [Cirsonella consobrina](#) A.W.B. Powell, 1930
- convexa, [Lissospira convexa](#) K.J. Bush, 1897
- cookiana, [Lodderia eumorpha cookiana](#) (R.K. Dell, 1952)
- copiosus, Parviturbo copiosus H.A. Pilsbry & A.A. Olsson, 1945 - syn of: [Parviturbooides copiosus](#) (H.A. Pilsbry & A.A. Olsson, 1945)
- corona, [Liotella corona](#) (C. Hedley, 1902)
- coronadoensis, [Skenea coronadoensis](#) (R. Arnold, 1903)
- crassicosata, [Liotella crassicosata](#) (H. Strebel, 1908)
- crossei, [Leucorhynchia crossei](#) G.W. Tryon, 1888
- crossi, [Skenea crossi](#) G.W. Tryon, 1888
- cubensis, [Haplocochlias cubensis](#)
- cubitalis, [Cirsonella cubitalis](#) (C. Hedley, 1907)
- cutleriana, [Dikoleps cutleriana](#) (W. Clark, 1849)
- cyclophoreus, [Haplocochlias cyclophoreus](#) P.P. Carpenter, 1864
- dalli, [Lissospira dalli](#) (A.E. Verrill, 1882)
- dautzenbergianum, Skeneoides dautzenbergianum C.M.F. Ancey, 1898 - syn of: [Skeneoides exilissima](#) (R.A. Philippi, 1844)
- dengyanzhangii, [Parviturbo dengyanzhangii](#) F. Rubio, E. Rolán & Lee, 2015
- densilirata, [Cirsonella densilirata](#) H.H. Suter, 1908
- depressa, [Dikoleps depressa](#) (T.A. de M. Monterosato, 1880)
- depressa, [Lissospira depressa](#) (W.H. Dall, 1927)
- diaphana, [Skenea diaphana](#) (A.E. Verrill, 1884)
- dibellai, [Parviturbo dibellai](#) G. Buzzurro & A. Cecalupo, 2007
- digeronimoi, [Skeneoides digeronimoi](#) R. La Perna, 1999
- disjuncta, [Liocarinia disjuncta](#) (C. Hedley, 1903)
- dispar, [Parviturbo dispar](#) F. Rubio, E. Rolán & J. Letourneux, 2015
- divae, [Skenea divae](#) F. Carrozza & J.J. Van Aartsen, 2001
- divisa, Skenea divisa E. Forbes & S.C.T. Hanley, 1853 - syn of: [Skenea serpuloides](#) (G. Montagu, 1808)
- dollfusi, Skenea dollfusi P. Dautzenberg & H. Fischer, 1896 - syn of: [Cyclostrema dollfusi](#) P. Dautzenberg & H. Fischer, 1896
- edwardiensis, [Lodderia edwardiensis](#) R.B. Watson, 1881
- electra, Notosetia electra W.R.B. Oliver, 1915 - syn of: [Rastodens electra](#) (W.R.B. Oliver, 1915)
- elegans, [Liotella elegans](#) C.F. Laseron, 1958
- elegantulus, [Parviturbo elegantulus](#) (R.A. Philippi, 1844)
- emeryi, [Lodderena emeryi](#) (H.S. Ladd, 1966)
- endeavourensis, [Liotella endeavourensis](#) R.K. Dell, 1990
- endeavourensis, Liotella endeavourensis R.K. Dell, 1990 - syn of: [Liotella endeavourensis](#) R.K. Dell, 1990
- ergasticus, [Parviturbo ergasticus](#) F. Rubio, E. Rolán & S. Gofas, 2015
- erici, [Haplocochlias erici](#) (A.M. Strong & L.G. Hertlein, 1939)
- eumorpha, [Lodderia eumorpha](#) (H.H. Suter, 1908)
- eumorpha cookiana, [Lodderia eumorpha cookiana](#) (R.K. Dell, 1952)
- exilissima, [Skeneoides exilissima](#) (R.A. Philippi, 1844)
- extrema, [Cirsonella extrema](#) K.H.J. Thiele, 1912
- fallax, [Dillwynella fallax](#) K. Hasegawa, 1997
- fenestratus, [Parviturbo fenestratus](#) (G.W. Chaster, 1896)
- ferruginea, [Skenea ferruginea](#) A. Warén, 1991
- floridensis, [Cirsonella floridensis](#) (W.H. Dall, 1927)
- forbesi, Dikoleps forbesi F. Nordbeck, 1982 - syn of: [Dikoleps nitens](#) (R.A. Philippi, 1844)
- formosa, [Lodderena formosa](#) A.W.B. Powell, 1930
- formosissima, Skeneoides formosissima F. Ghisotti, 1977 - syn of: [Skeneoides jeffreysii](#) (T.A. de M. Monterosato, 1872)
- formosissimus, Skeneoides formosissimus G.A. Brugnone, 1873 - syn of: [Skeneoides jeffreysii](#) (T.A. de M. Monterosato, 1872)
- fortius, [Parviturbo fortius](#)
- francesae, [Haplocochlias francesae](#) (H.A. Pilsbry & J.T.L. McGinty, 1945)
- fulva, Notosetia fulva C.F. Laseron, 1950 - syn of: [Rissoella micra](#) (H.J. Finlay, 1924)
- funazzensis, [Skenea funazzensis](#) A. De Gregorio, 1890
- funnazzensis, Cirsonella funnazzensis A. De Gregorio, 1889 - syn of: [Cirsonella romettensis](#) (J. Granata Grillo, 1877)
- fuscocephala, [Lodderia fuscocephala](#) K. Oyama, 1953
- fuscomaculata, [Skenea fuscomaculata](#) G.B. Sowerby, 1892
- garciai, [Haplocochlias garciai](#)
- gaudryi, [Cirsonella gaudryi](#) (P. Dautzenberg & H. Fischer, 1896)
- georgiana, [Cirsonella georgiana](#) (W.H. Dall, 1927)
- germanus, Parviturbo germanus H.A. Pilsbry & A.A. Olsson, 1945 - syn of: [Parviturbooides germanus](#) (H.A. Pilsbry & A.A. Olsson, 1945)
- ghanensis, Notosetia ghanensis E. Rolán & P. Ryall, 2000 - syn of: [Ponderinella ghanensis](#) (E. Rolán & P. Ryall, 2000)

- giemellorum, [Skenea giemellorum](#) L. Romani, C. Bogi & S. Bartolini, 2015
- giustii, [Mikro giustii](#) (C. Bogi & I. Nofroni, 1989)
- globosa, [Cirsonella globosa](#) (J.P.L. Pelseneer, 1903)
- globosa, [Callomphala globosa](#) C. Hedley, 1901
- globulus, [Bruceiella globulus](#) A. Warén & P. Bouchet, 1993
- globulus, [Mikro globulus](#) A. Warén, 1996
- gofasi, [Parviturbo gofasi](#)
- gorii, [Leucorhynchia gorii](#) E. Rolán & F. Rubio, 2012
- granulum, [Pseudorbis granulum](#) (G.A. Brugnone, 1873)
- granulum, [Parviturbo granulum](#) (W.H. Dall, 1889)
- granum, Pseudorbis granum G.A. Brugnone, 1873 - syn of: [Pseudorbis granulum](#) (G.A. Brugnone, 1873)
- granum, Cirsonella granum R. Murdoch & H.H. Suter, 1906 - syn of: [Lissotesta granum](#) (R. Murdoch & H.H. Suter, 1906)
- gravicosta, Liotella gravicosta C.F. Laseron, 1954 - syn of: [Liotella petalifera](#) (C. Hedley & W.L. May, 1908)
- guadeloupensis, [Parviturbo guadeloupensis](#)
- gyalum, Skenea gyalum J.C. Melvill, 1904 - syn of: [Cyclostrema gyalum](#) J.C. Melvill, 1904
- gyratum, Lapidicola gyratum E.N. Egorova, 1972 - syn of: [Lissotesta unifilosa](#) (K.H.J. Thiele, 1912)
- haptricola, [Dillwynella haptricola](#) B.A. Marshall, 1988
- harryleei, [Haplocochlias harryleei](#)
- hattonensis, [Mikro hattonensis](#)
- hermesae, [Lopheliella hermesae](#)
- hoeksemai, [Callomphala hoeksemai](#) R.G. Moolenbeek & H.J. Hoenseelaar, 2008
- indigens, [Liotella indigens](#) H.J. Finlay, 1926
- ingens, [Dillwynella ingens](#) B.A. Marshall, 1988
- inscripta, [Zalipais inscripta](#) (R. Tate, 1899)
- insularis, [Parviturbo insularis](#) E. Rolán, 1988
- iota, [Lodderia iota](#) A.W.B. Powell, 1940
- iredalei, [Parisanda iredalei](#) C.F. Laseron, 1954
- jameoensis, [Pseudorbis jameoensis](#) F. Rubio & C. Rodríguez Babio, 1991
- janetmayae, [Lodderena janetmayae](#) F. Rubio, E. Rolán & C. Redfern, 1998
- javiercondei, [Parviturbo javiercondei](#)
- jeffreysii, [Skeneoides jeffreysii](#) (T.A. de M. Monterosato, 1872)
- johnstoni, [Liotella johnstoni](#) (R.H. Beddome, 1883)
- karukera, [Haplocochlias karukera](#) F. Rubio & E. Rolán, 2015
- kerguelensis, [Cirsonella kerguelensis](#) K.H.J. Thiele, 1912
- kilcundae, [Liotella kilcundae](#) (J.H. Gatliff & C.J. Gabriel, 1914)
- kirai, [Munditiella kirai](#) (T. Habe, 1961)
- laevigata, [Bruceiella laevigata](#) B.A. Marshall, 1994
- laevigata, Skenea laevigata H.B.S. Friele, 1876 - syn of: [Skenea trochoides](#) (H.B.S. Friele, 1876)
- laevigata, Skenea laevigata J.G. Jeffreys, 1876 - syn of: [Skenea trochoides](#) (H.B.S. Friele, 1876)
- laevigatum, Skenea laevigatum G.O. Sars, 1878 - syn of: [Skenea ossiansarsi](#) A. Warén, 1991
- laevis, Dikoleps laevis E. Forbes & S.C.T. Hanley, 1856 - syn of: [Dikoleps nitens](#) (R.A. Philippi, 1844)
- laevis, Skenea laevis E. Forbes & S.C.T. Hanley, 1856 - syn of: [Dikoleps nitens](#) (R.A. Philippi, 1844)
- laevis, Skenea laevis R.A. Philippi, 1844 - syn of: [Skenea serpuloides](#) (G. Montagu, 1808)
- larseni, [Skenea larseni](#) A. Warén, 1993
- laseroni, Zalipais laseroni J.A. Kershaw, 1955 - syn of: [Zalipais inscripta](#) (R. Tate, 1899)
- lata, [Cirsonella lata](#) (C.F. Laseron, 1954)
- laxa, [Cirsonella laxa](#) A.W.B. Powell, 1937
- lenticula, Skenea lenticula A.A. Gould, 1861 - syn of: [Collonista lenticula](#) (A.A. Gould, 1861)
- lequios, [Theyaspira lequios](#) T.A. Okutani, T. Sasaki & E. Tsuchida, 2000
- lequois, Theyaspira lequois T.A. Okutani, T. Sasaki & E. Tsuchida, 2000 - syn of: [Theyaspira lequios](#) T.A. Okutani, T. Sasaki & E. Tsuchida, 2000
- lignicola, [Dillwynella lignicola](#) B.A. Marshall, 1988
- lirata, [Leucorhynchia lirata](#) (E.A. Smith, 1872)
- lissa, Zalipais lissa H.H. Suter, 1908 - syn of: [Zalipais inscripta](#) (R. Tate, 1899)
- littoralis, Liotella littoralis C.F. Laseron, 1954 - syn of: [Liotella johnstoni](#) (R.H. Beddome, 1883)
- lodderae, [Lodderia lodderae](#) (W.F. Petterd, 1884)
- loperi, [Haplocochlias loperi](#) F. Rubio, E. Rolán & Y.C. Lee, 2013
- lucasensis, [Haplocochlias lucasensis](#) (A.M. Strong, 1934)
- lucida, [Callomphala lucida](#) (A. Adams & G.F. Angas, 1864)
- lupita, [Haplocochlias lupita](#) J. Espinosa & J.A. Ortea, 2013
- mackenae, [Liotella mackenae](#) R.K. Dell, 1956
- maoria, [Cirsonella maoria](#) (A.W.B. Powell, 1937)
- marcosi, [Parviturbo marcosi](#)
- margaritifformis, [Cirsonella margaritifformis](#) (W.H. Dall, 1927)
- marianae, [Dikoleps marianae](#) F. Rubio, L. Dantart & A.A. Luque, 1998
- microscopica, [Cirsonella microscopica](#) (J.H. Gatliff & C.J. Gabriel, 1910)

- millepunctata, [Skenea millepunctata](#) H.B.S. Friele, 1880
- minima, [Lodderena minima](#) (J.E. Tenison-Woods, 1878)
- minor, [Leucorhynchia minor](#) E. Rolán & S. Gori, 2013
- minusdentatus, [Haplocochlias minusdentatus](#) F. Rubio, E. Rolán & C. Redfern, 2013
- minuta, [Skenea minuta](#) J.G. Jeffreys, 1883
- minutissima, [Skenea trochoides minutissima](#) F. Nordsieck, 1982
- minutissimus, [Lophocochlias minutissimus](#) H.A. Pilsbry, 1921
- mirabile, [Skenea mirabile](#) J.T. Kuroda & T. Habe, 1991
- modesta, [Dillwynella modesta](#) (W.H. Dall, 1889)
- moolenbeeki, [Haplocochlias moolenbeeki](#) D. De Jong & H.E. Coomans, 1988
- moolenbeeki, [Lopheliella moolenbeeki](#)
- moundforcae, [Lopheliella moundforcae](#) L. Hoffman, B. van Heugten & M.S.S. Lavaley, 2008 - syn of: [Lopheliella moundforcae](#)
- moundforcae, [Lopheliella moundforcae](#)
- multiliratus, [Haplocochlias multiliratus](#)
- multispiralis, [Parviturbo multispiralis](#)
- mutabilis, [Dikoleps mutabilis](#) O.G. Costa, 1861 - syn of: [Dikoleps nitens](#) (R.A. Philippi, 1844)
- mystax, [Fucaria mystax](#) A. Warén & P. Bouchet, 2001
- nana, [Lodderena nana](#) A.W.B. Powell, 1930
- nana pooki, [Lodderena nana pooki](#) C.A. Fleming, 1948
- naticoides, [Cirsonella naticoides](#) C. Hedley, 1907 - syn of: [Cirsonella weldii](#) (J.E. Tenison-Woods, 1877)
- nilarum, [Skenea nilarum](#) W. Engl, 1996
- nipponica, [Skenea nipponica](#) M. Yokoyama, 1920
- nitens, [Dikoleps nitens](#) (R.A. Philippi, 1844)
- nitidissima, [Skenea nitidissima](#) E. Forbes & S.C.T. Hanley - syn of: [Omalogyra atomus](#) (R.A. Philippi, 1841)
- nitidiuscula, [Ganesa nitidiuscula](#) J.G. Jeffreys, 1883
- novemcarinata, [Lodderia novemcarinata](#) (J.C. Melvill, 1906)
- nunezi, [Haplocochlias nunezi](#)
- olgae, [Skenea olgae](#) W. Segers, F. Swinnen & R. De Prins, 2009
- omanensis, [Lodderena omanensis](#) R.G. Moolenbeek, 1996
- onaneyi, [Haplocochlias onaneyi](#)
- ornata, [Lodderena ornata](#) (A.A. Olsson & J.T.L. McGinty, 1958)
- ornata, [Lissospira ornata](#) (A.E. Verrill, 1884)
- ortizi, [Haplocochlias ortizi](#)
- ossiansarsi, [Skenea ossiansarsi](#) A. Warén, 1991
- pachynepion, [Lodderena pachynepion](#) (H.A. Pilsbry & A.A. Olsson, 1945)
- pacorubioi, [Haplocochlias pacorubioi](#)
- panamensis, [Haplocochlias panamensis](#)
- panamensis, [Ganesa panamensis](#) W.H. Dall, 1902
- paradoxa, [Cirsonella paradoxa](#) A.W.B. Powell, 1937
- parvirota, [Liotella parvirota](#) C.F. Laseron, 1954 - syn of: [Liotella kilcundae](#) (J.H. Gatliff & C.J. Gabriel, 1914)
- parvissimus, [Parviturbo parvissimus](#) C. Hedley, 1899 - syn of: [Parviturboides parvissimus](#) (C. Hedley, 1899)
- parvissimus, [Lophocochlias parvissimus](#) C. Hedley, 1899 - syn of: [Parviturboides parvissimus](#) (C. Hedley, 1899)
- parvula, [Cirsonella parvula](#) A.W.B. Powell, 1926
- patonga, [Liotella patonga](#) C.F. Laseron, 1954 - syn of: [Liotella annulata](#) (J.E. Tenison-Woods, 1874)
- pauciliratus, [Haplocochlias pauciliratus](#) F. Rubio, E. Rolán & Y.C. Lee, 2013
- pauli, [Didianema pauli](#) H.A. Pilsbry & J.T.L. McGinty, 1945
- pauly, [Didianema pauly](#) H.A. Pilsbry & J.T.L. McGinty, 1945 - syn of: [Didianema pauli](#) H.A. Pilsbry & J.T.L. McGinty, 1945
- pelagia, [Skenea pelagia](#) I. Nofroni & Valenti, 1987
- pelagica, [Skenea pelagica](#) I. Nofroni & Valenti, 1987 - syn of: [Skenea pelagia](#) I. Nofroni & Valenti, 1987
- pellucida, [Notosetia pellucida](#) C.F. Laseron, 1950 - syn of: [Rissoella secunda](#) (T. Iredale, 1912)
- pellucidoides, [Skenea pellucidoides](#) F. Nordsieck, 1982
- perplexa, [Cirsonella perplexa](#) C.F. Laseron, 1954 - syn of: [Cirsonella reflecta](#) C.F. Laseron, 1954
- petalifera, [Liotella petalifera](#) (C. Hedley & W.L. May, 1908)
- peterseni, [Skenea peterseni](#) (H.B.S. Friele, 1877)
- petiti, [Skenea petiti](#) P. Fischer, 1857 - syn of: [Solariorbis petiti](#) (P. Fischer, 1857)
- pisiformis, [Cirsonella pisiformis](#) A.W.B. Powell, 1937
- planorbis, [Dillwynella planorbis](#) K. Hasegawa, 1997
- planorbis, [Skenea planorbis](#) O. Fabricius, 1780 - syn of: [Skeneopsis planorbis](#) (O. Fabricius, 1780)
- planorbis hyalina, [Skenea planorbis hyalina](#) J.G. Jeffreys, 1867 - syn of: [Skeneopsis planorbis](#) (O. Fabricius, 1780)
- planorbis maculata, [Skenea planorbis maculata](#) J.G. Jeffreys, 1867 - syn of: [Skeneopsis planorbis](#) (O. Fabricius, 1780)
- planorbis trochiformis, [Skenea planorbis trochiformis](#) J.G. Jeffreys, 1867 - syn of: [Skeneopsis planorbis](#) (O. Fabricius, 1780)
- plicata, [Leucorhynchia plicata](#) (E.A. Smith, 1872)
- polita, [Skenea polita](#) A. Warén, 1993
- polypleura, [Liotella polypleura](#) (C. Hedley, 1904)
- pombali, [Parviturbo pombali](#)

- ponsonbyi, [Skenea ponsonbyi](#) (P. Dautzenberg & H. Fischer, 1897)
- pooki, [Lodderena nana pooki](#) C.A. Fleming, 1948
- princeps, *Liotella princeps* C.F. Laseron, 1954 - syn of: [Liotella johnstoni](#) (R.H. Beddome, 1883)
- profunda, [Skenea profunda](#) (H.B.S. Friele, 1879)
- propelaxa, [Cirsonella propelaxa](#) R.K. Dell, 1956
- proxima, [Skenea proxima](#) (G.W. Tryon, 1888)
- pruinosa, [Dikoleps pruinosa](#) (G.W. Chaster, 1896)
- pruinosa, [Bruceiella pruinosa](#) B.A. Marshall, 1994
- pulchella, [Lodderena pulchella](#) (A.A. Olsson & J.T.L. McGinty, 1958)
- pulcherrima, [Liotella pulcherrima](#)
- punctata, [Leucorhynchia punctata](#) (F.P. Jousseume, 1872)
- pusilla, *Dikoleps pusilla* J.G. Jeffreys, 1847 - syn of: [Dikoleps nitens](#) (R.A. Philippi, 1844)
- qualum, [Munditiella qualum](#) (C. Hedley, 1899)
- rarinota, [Lissospira rarinota](#) K.J. Bush, 1897
- rectangularis, [Parviturbo rectangularis](#)
- reflecta, [Cirsonella reflecta](#) C.F. Laseron, 1954
- regulosa, *Ganesa regulosa* G.O. Sars, 1878 - syn of: [Skenea rugulosa](#) (G.O. Sars, 1878)
- rehderi, [Parviturbo rehderi](#) H.A. Pilsbry & J.T.L. McGinty, 1945
- retusa, *Notosetia retusa* A.W.B. Powell, 1927 - syn of: [Powellisetia retusa](#) (A.W.B. Powell, 1927)
- rhinoceras, [Callomphala rhinoceras](#) F.P. Jousseume, 1881
- risoneideneryae, [Haplocochlias risoneideneryae](#)
- robustior, [Parviturbo robustior](#) F. Rubio, E. Rolán & Lee, 2015
- rockallensis, [Lopheliella rockallensis](#)
- rolani, [Dikoleps rolani](#) F. Rubio, L. Dantart & A.A. Luque, 1998
- rolani, [Parviturbo rolani](#) W. Engl, 2001
- romettensis, [Cirsonella romettensis](#) (J. Granata Grillo, 1877)
- rota, *Skenea rota* E. Forbes & S.C.T. Hanley, 1850 - syn of: [Ammonicera rota](#) (E. Forbes & S.C.T. Hanley, 1850)
- rotella, [Pondorbis rotella](#) K. Oyama, 1953
- rotula, [Liotella rotula](#) (H.H. Suter, 1908)
- rotuloides, [Liotella rotuloides](#) A.W.B. Powell, 1937
- rugulosa, [Skenea rugulosa](#) (G.O. Sars, 1878)
- sabellii, *Lissomphalia sabellii* C. Bogi & I. Nofroni, 1989 - syn of: [Lissomphalia bithynoides](#) (T.A. de M. Monterosato, 1880)
- seamountensis, [Parviturbo seamountensis](#) F. Rubio, E. Rolán & S. Gofas, 2015
- seishinmaruae, *Dillwynella seishinmaruae* K. Hasegawa, 1997 - syn of: [Dillwynella sheisinmaruae](#) K. Hasegawa, 1997
- serpuloides, [Skenea serpuloides](#) (G. Montagu, 1808)
- sheisinmaruae, [Dillwynella sheisinmaruae](#) K. Hasegawa, 1997
- simplex, [Cirsonella simplex](#) A.W.B. Powell, 1937
- sphaeroidea, [Parviturbo sphaeroidea](#) (J.G. Jeffreys, 1883)
- sphaeroides, [Skenea sphaeroides](#) S.V. Wood, 1850
- stearnsii, [Parviturbo stearnsii](#) (W.H. Dall, 1918)
- striata, [Fucaria striata](#) A. Warén & P. Bouchet, 1993
- striata, [Lissospira striata](#) K.J. Bush, 1897
- striatula, *Skenea striatula* H.C. Weinkauff, 1862 - syn of: [Circulus striatus](#) (R.A. Philippi, 1836)
- suavis, [Dasyskenea suavis](#) G. Fasulo & M. Cretela, 2003
- subalveolatum, *Skeneoides subalveolatum* M. Fekih & L. Gougerot, 1974 - syn of: [Skeneoides exilissima](#) (R.A. Philippi, 1844)
- subcanaliculata, *Skenea subcanaliculata* E.A. Smith, 1875 - syn of: [Microdiscula subcanaliculata](#) (E.A. Smith, 1875)
- sucina, *Helisalia sucina* C.F. Laseron, 1954 - syn of: [Ammonicera sucina](#) (C.F. Laseron, 1954)
- swifti, [Haplocochlias swifti](#) E.G. Vanatta, 1913
- tanae, [Lodderena tanae](#) R.G. Moolenbeek, 1996
- templadoi, [Dikoleps templadoi](#) F. Rubio, L. Dantart & A.A. Luque, 2004
- texturata, [Philorene texturata](#) W.R.B. Oliver, 1915
- thorvaldsoni, [Protolira thorvaldsoni](#) A. Warén, 1996
- tinostomoides, *Tharsiella tinostomoides* M. Fekih & L. Gougerot, 1977 - syn of: [Tomura depressa](#) (J. Granata Grillo, 1877)
- translucida, *Cirsonella translucida* W.L. May, 1915 - syn of: [Acremodontina translucida](#) (W.L. May, 1915)
- tricarinata, [Leucorhynchia tricarinata](#) J.C. MeMill & R. Standen, 1896
- tricarinata, *Skenea tricarinata* W.H. Webster, 1856 - syn of: [Ammonicera rota](#) (E. Forbes & S.C.T. Hanley, 1850)
- trilix, *Skenea trilix* K.J. Bush, 1885 - syn of: [Cyclostremiscus trilix](#) (K.J. Bush, 1885)
- trochiformis, *Skenea trochiformis* É.A.A. Locard, 1886 - syn of: [Skeneopsis planorbis](#) (O. Fabricius, 1780)
- trochoides, [Skenea trochoides](#) (H.B.S. Friele, 1876)
- trochoides minutissima, [Skenea trochoides minutissima](#) F. Nordsieck, 1982
- trochoides selvagensis, *Skenea trochoides selvagensis* F. Nordsieck & F.F. Talavera, 1979 - syn of: [Tricolia nordsiecki](#) (F.F. Talavera, 1978)
- tryoni, [Leucorhynchia tryoni](#) H.A. Pilsbry, 1891
- tuberculosus, [Parviturbo tuberculosus](#) (A.V.M.D. D'Orbigny, 1842)
- turbinus, [Haplocochlias turbinus](#) (W.H. Dall, 1889)
- turbinus, *Parviturbo turbinus* W.H. Dall, 1889 - syn of: [Haplocochlias turbinus](#) (W.H. Dall, 1889)

- **turgida**, [Skenea turgida](#) (N.H. Odhner, 1912)
 - **turneri**, [Zalipais turneri](#) A.W.B. Powell, 1939
 - **umbilicostrata**, [Dikoleps umbilicostrata](#) (A. Gaglini, 1987)
 - **unicarinata**, *Notosetia unicarinata* A.W.B. Powell, 1930 - syn of: [Powellisetia unicarinata](#) (A.W.B. Powell, 1930)
 - **valvata**, [Lissospira valvata](#) (W.H. Dall, 1927)
 - **valvatoides**, [Skenea valvatoides](#) (J.G. Jeffreys, 1883)
 - **valvatoides**, [Protolira valvatoides](#) A. Warén & P. Bouchet, 1993
 - **vanuatuensis**, [Parviturbo vanuatuensis](#)
 - **variecostata**, [Cirsonella variecostata](#) A.W.B. Powell, 1940
 - **vatovai**, [Skenea vatovai](#) F. Nordsieck, 1974
 - **vercoi**, [Liotella vercoi](#) (J.H. Gatliff & C.J. Gabriel, 1914)
 - **verrilli**, *Ganesa verrilli* G.W. Tryon, 1888 - syn of: [Rugulina verrilli](#) (G.W. Tryon, 1888)
 - **vestiarium**, [Skenea vestiarium](#) J.H.F. Link, 1807
 - **victori**, [Skenea victori](#) W. Segers, F. Swinnen & R. De Prins, 2009
 - **vitrea**, [Dillwynella vitrea](#) K. Hasegawa, 1997
 - **voightae**, [Dillwynella voightae](#) Kunze, 2011
 - **waikukuensis**, [Cirsonella waikukuensis](#) A.W.B. Powell, 1937
 - **waitemata**, [Lodderia waitemata](#) A.W.B. Powell, 1940
 - **wareni**, [Bruceiella wareni](#) T.A. Okutani, J. Hashimoto & T. Sasaki, 2004
 - **weberi**, [Parviturbo weberi](#) H.A. Pilsbry & J.T.L. McGinty, 1945
 - **weldii**, [Cirsonella weldii](#) (J.E. Tenison-Woods, 1877)
 - **willei**, [Skenea willei](#) H.B.S. Friele, 1886
 - **williami**, [Haplocochlias williami](#)
 - **zylmanae**, [Parviturbo zylmanae](#) F. Rubio, E. Rolán & Lee, 2015
-

Class: GASTROPODA
--- Clade: VETIGASTROPODA-TROCHOIDEA

----- Family: SKENEIDAE Clark, 1851

Habitat= Sea, Taxonomic order
Taxa=379, Genus=32, Subgenus=2, Species=260, Subspecies=3, Synonyms=81, Images=113

Genus: **Bruceiella** A. Warén & P. Bouchet, 1993 (5 SP, 3 IMG)

	5066000106 Bruceiella athlia		
	A. Warén & P. Bouchet, 2001 Aleutian Trench		

	5352000040 Bruceiella globulus		
	A. Warén & P. Bouchet, 1993 North Fiji Basin		

	5066000104 Bruceiella laevigata		
	B.A. Marshall, 1994 Chatham Islands, New Zealand		

synonyms:

- Bathyxylophila laevigata B.A. Marshall, 1994

	5066000970 Bruceiella pruinosa		
	B.A. Marshall, 1994 New Zealand, Challenger Plateau 1,5 mm		

	5066000778 Bruceiella wareni		
	T.A. Okutani, J. Hashimoto, & T. Sasaki, 2004 Kairei Field Hydrothermal Vent		

Genus: **Callomphala** A. Adams & G.F. Angas, 1864 (4 SP, 2 IMG)

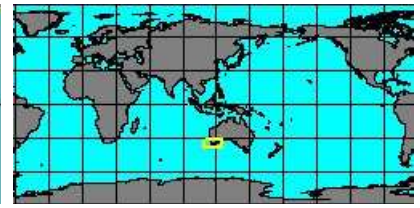
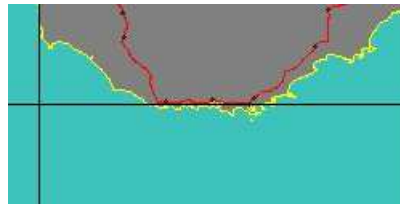
	1030504420 Callomphala globosa		
	C. Hedley, 1901 Japan		

	5234000001 Callomphala hoeksemai		
	R.G. Moolenbeek & H.J. Hoensehaar, 2008 Java, Thousand Islands 2,3 mm		



1030504430
Callomphala lucida

(A. Adams & G.F. Angas, 1864)
Australia, Ocean Beach



synonyms:

- Calomphala alta C.F. Laseron, 1954
- Neritula lucida A. Adams & G.F. Angas, 1864



1030504440
Callomphala rhinoceras

F.P. Jousseume, 1881

No Georeferenced data available

synonyms:

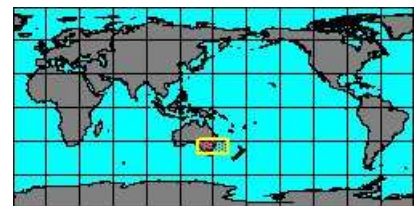
- Teinostoma rhinoceras F.P. Jousseume, 1881

Subgenus: Callomphala (Parisanda) C.F. Laseron, 1954 (1 SP, 0 IMG)



5352000034
Parisanda iredalei

C.F. Laseron, 1954
New South Wales

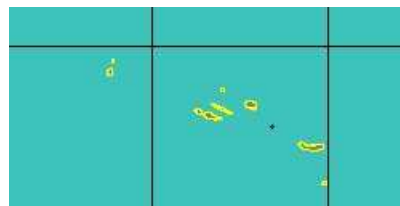


Genus: Cirsonella G.F. Angas, 1877 (syn: Porcupina, Porcupinia, Tharsiella - 26 SP, 7 IMG)



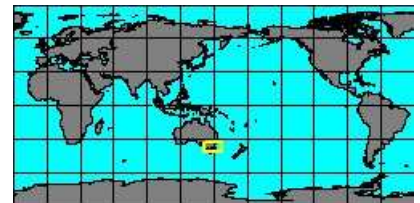
5066000916
Cirsonella ateles

(P. Dautzenberg & H. Fischer, 1896)
Azores



5066000251
Cirsonella carinata

(C. Hedley, 1903)
Cape Everard, Australia



5066000250
Cirsonella consobrina

A.W.B. Powell, 1930
New Zealand



5066000249
Cirsonella cubitalis

(C. Hedley, 1907)
Queensland



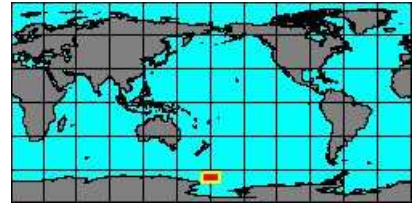
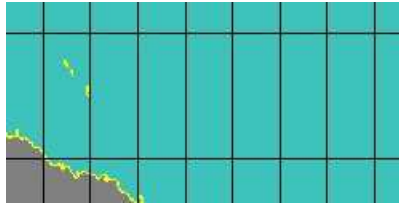
no
IMAGES
available

5066000248
Cirsonella
densilirata
H.H. Suter, 1908
New Zealand



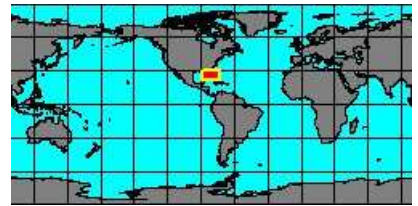
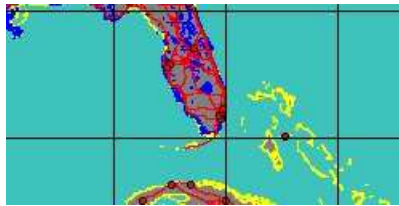
no
IMAGES
available

5066000247
Cirsonella
extrema
K.H.J. Thiele, 1912
Ross Sea



no
IMAGES
available

5234000110
Cirsonella
floridensis
(W.H. Dall, 1927)
Florida



synonyms:

- Teinostoma floridense W.H. Dall, 1927

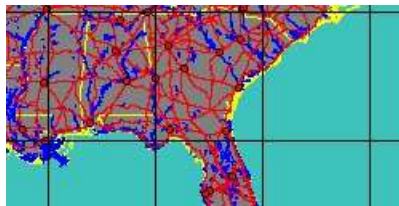


5066000915
Cirsonella
gaudryi
(P. Dautzenberg & H. Fischer, 1896)
Rockall trough, Ireland
2,5 mm



no
IMAGES
available

1020000060
Cirsonella
georgiana
(W.H. Dall, 1927)
USA, Georgia

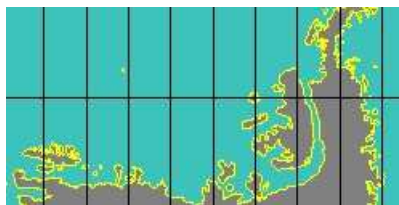


synonyms:

- Vitrinella georgiana W.H. Dall, 1927

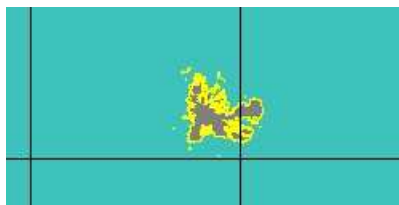
no
IMAGES
available

5066000914
Cirsonella
globosa
(J.P.L. Peleener, 1903)
Bellinghousen Sea

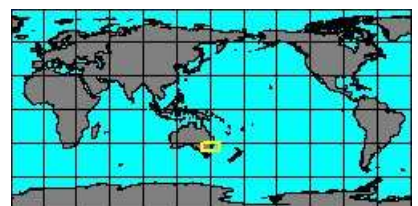


no
IMAGES
available

5066000246
Cirsonella
kerquelensis
K.H.J. Thiele, 1912
Kerguelen Islands



5066000245
Cirsonella
lata
(C.F. Laseron, 1954)
Australia, Sydney
1,3 mm



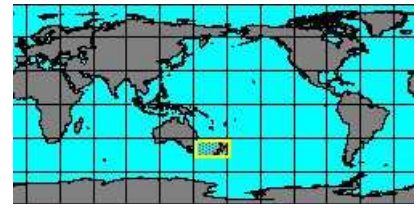
synonyms:

- Conicella lata C.F. Laseron, 1954

no
IMAGES
available

5066000244
Cirsonella
laxa

A.W.B. Powell, 1937
New Zealand



no
IMAGES
available

5066000243
Cirsonella
maoria

(A.W.B. Powell, 1937)
New Zealand



no
IMAGES
available

5234000025
Cirsonella
margaritiformis

(W.H. Dall, 1927)
Bahamas



synonyms:

- *Lydiphnis margaritiformis* W.H. Dall, 1927
- *Circulus margaritiformis* W.H. Dal, 1927

no
IMAGES
available

5066000242
Cirsonella
microscopica

(J.H. Gatliff & C.J. Gabriel, 1910)

No Georeferenced data available

synonyms:

- *Cyclostrema microscopium* J.H. Gatliff & C.J. Gabriel, 1910

no
IMAGES
available

5066000240
Cirsonella
paradoxa

A.W.B. Powell, 1937
New Zealand



no
IMAGES
available

5066000239
Cirsonella
parvula

A.W.B. Powell, 1926
New Zealand



no
IMAGES
available

5066000238
Cirsonella
pisiformis

A.W.B. Powell, 1937
New Zealand



5066000237
Cirsonella
propelaxa

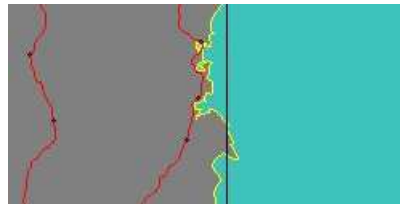
R.K. Dell, 1956
New Zealand





5066000236
Cirsonella
reflecta

C.F. Laseron, 1954
Twofold Bay, Australia
1 mm



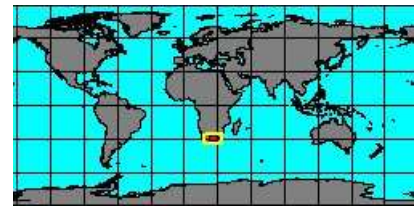
synonyms:

- *Cirsonella perplexa* C.F. Laseron, 1954



5066000235
Cirsonella
romettensis

(J. Granata Grillo, 1877)
Almeria, Spain
2 mm



synonyms:

- *Cirsonella adamsi* J.G. Jeffreys, 1883
- *Cyclostrema funnazzense* A. De Gregorio, 1889
- *Oxysteles romettensis* J. Granata Grillo, 1877
- *Cirsonella funnazzensis* A. De Gregorio, 1889



5066000234
Cirsonella
simplex

A.W.B. Powell, 1937
New Zealand



5066000232
Cirsonella
variecostata

A.W.B. Powell, 1940
New Zealand



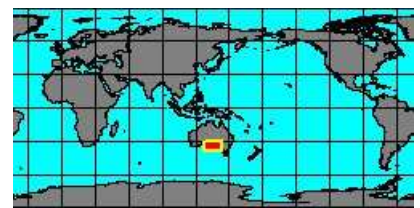
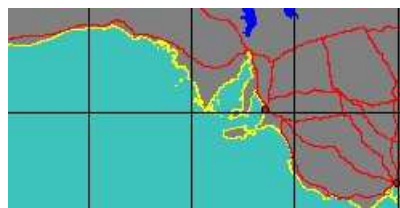
5066000231
Cirsonella
waikukuensis

A.W.B. Powell, 1937
New Zealand



5066000230
Cirsonella
weldii

(J.E. Tenison-Woods, 1877)
Australia, Port Lincoln
2 mm



synonyms:

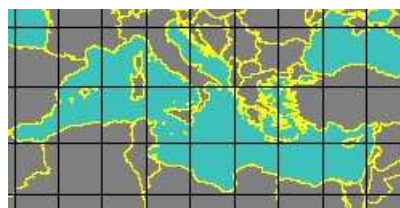
- *Cirsonella australis* G.F. Angas, 1877
- *Cirsonella naticoides* C. Hedley, 1907
- *Cyclostrema susonis* J.E. Tenison-Woods, 1877
- *Crossea naticoides* C. Hedley, 1907
- *Cyclostrema weldii* J.E. Tenison-Woods, 1877

Genus: Dasyskenea G. Fasulo & M. Cretella, 2003 (1 SP, 1 IMG)



5066000414
Dasyskenea
suavis

G. Fasulo & M. Cretella, 2003
Mediterranean Sea

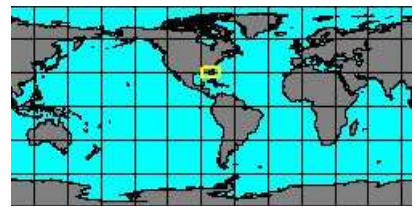
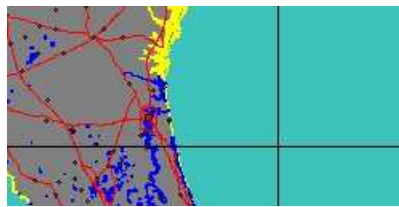


Genus: Didianema W.P. Woodring, 1928 (1 SP, 1 IMG)



1030505970
Didianema pauli

H.A. Pilsbry & J.T.L. McGinty, 1945
Florida, Jacksonville
1 mm



synonyms:

- *Didianema pauly* H.A. Pilsbry & J.T.L. McGinty, 1945

Genus: Dikoleps T. Høisaeter, 1968 (8 SP, 8 IMG)



5066000422
Dikoleps cutleriana

(W. Clark, 1849)
Canary Islands
0,6 mm



synonyms:

- *Trochus exilis* R.A. Philippi, 1844



5066000421
Dikoleps depressa

(T.A. de M. Monterosato, 1880)
Palermo, Sicily
0,8 mm



5066000420
Dikoleps marianae

F. Rubio, L. Dantart & A.A. Luque, 1998
Italy, Ventotene Island
1 mm



5066000419
Dikoleps nitens

(R.A. Philippi, 1844)
Italy, Siracusa
0,8 mm



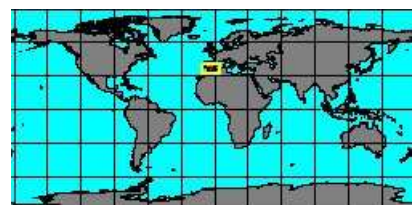
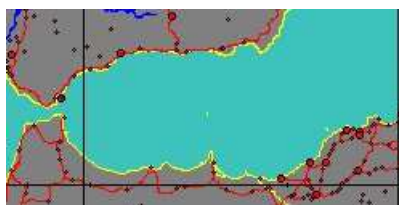
synonyms:

- *Dikoleps alderi* J.G. Jeffreys, 1865
- *Skenea laevis* E. Forbes & S.C.T. Hanley, 1856
- *Dikoleps mutabilis* O.G. Costa, 1861
- *Cyclostrema nitens alderi* J.G. Jeffreys, 1865
- *Dikoleps forbesi* F. Nordsieck, 1982
- *Dikoleps laevis* E. Forbes & S.C.T. Hanley, 1856
- *Angaria nitens* R.A. Philippi, 1844
- *Dikoleps pusilla* J.G. Jeffreys, 1847



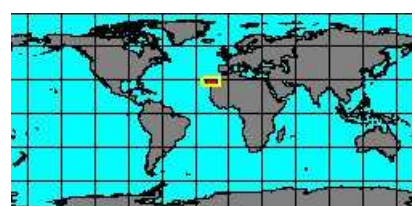
5066000418
Dikoleps pruinosa

(G.W. Chaster, 1896)
Alboran Sea
0,8 mm



5066000417
Dikoleps rolani

F. Rubio, L. Dantart & A.A. Luque, 1998
Canary Islands
1 mm





5066000416
Dikoleps
templadoi

F. Rubio, L. Dantart & A.A. Luque, 2004

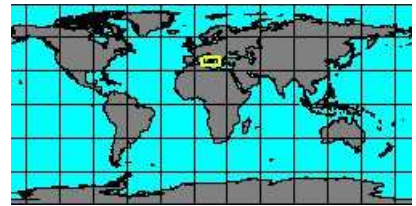
Italy, Elba Island
1,8 mm



5066000415
Dikoleps
umbilicostriata

(A. Gagini, 1987)

Italy, Scilla, Calabria
0,8 mm



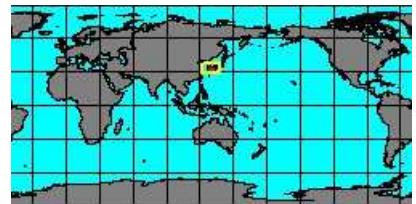
Genus: Dillwynella W.H. Dall, 1889 (9 SP, 8 IMG)



5066000431
Dillwynella
fallax

K. Hasegawa, 1997

Japan, Nagasaki
3,7 mm



5066000430
Dillwynella
haptricola

B.A. Marshall, 1988

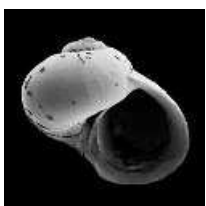
New Zealand



5066000429
Dillwynella
ingens

B.A. Marshall, 1988

New Zealand



5066000428
Dillwynella
lignicola

B.A. Marshall, 1988

New Zealand



5066000427
Dillwynella
modesta

(W.H. Dall, 1889)

Barbados, St Lucia



synonyms:

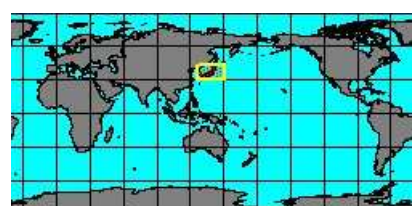
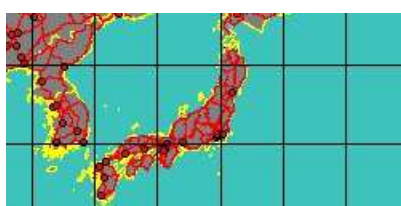
- *Teinostoma modesta* W.H. Dall, 1889



5066000426
Dillwynella
planorbis

K. Hasegawa, 1997

Japan

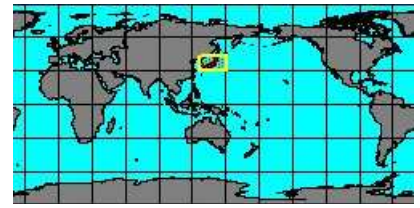
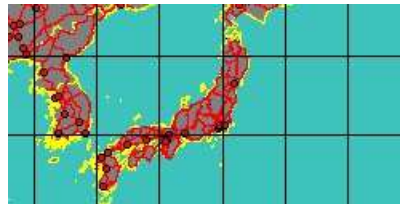




5066000425
Dillwynella
sheishinmaruae

K. Hasegawa, 1997

Japan
3 mm



synonyms:

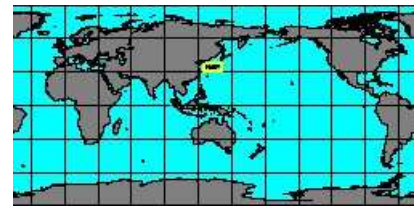
- *Dillwynella seishinmaruae* K. Hasegawa, 1997



5066000423
Dillwynella
vitrea

K. Hasegawa, 1997

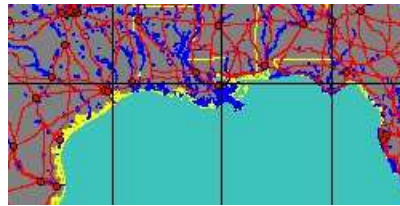
Japan, Kochi
3 mm



5234000168
Dillwynella
voightae

Kunze, 2011

USA, Louisiana



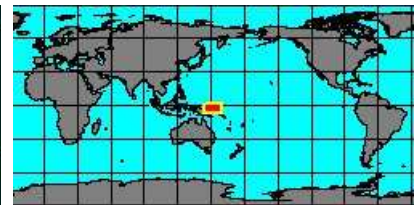
Genus: Fucaria A. Warén & P. Bouchet, 1993 (2 SP, 1 IMG)



5060000941
Fucaria
mystax

A. Warén & P. Bouchet, 2001

Edson Seamount



5060001035
Fucaria
striata

A. Warén & P. Bouchet, 1993

Juan de Fuca Ridge



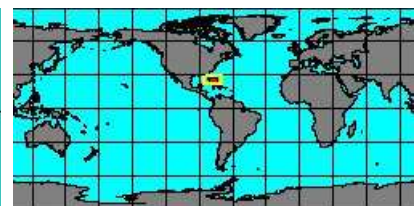
Genus: Ganesa J.G. Jeffreys, 1883 (3 SP, 0 IMG)



5066000466
Ganesa
atomus

H.A. Pilsbry & A.A. Olsson

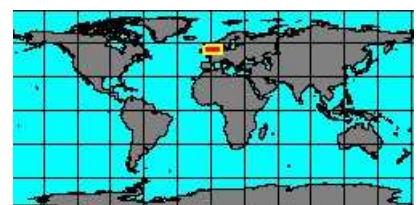
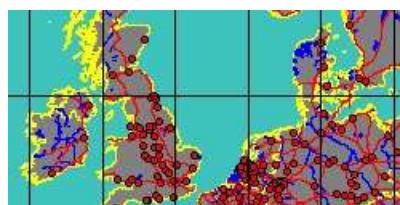
Bahamas



5066000456
Ganesa
nitidiuscula

J.G. Jeffreys, 1883

North Sea



5539752031
Ganesa
panamensis

W.H. Dall, 1902

Mexico, Baja California





5539752062
Haplocochlias
arawakorum

F. Rubio & E. Rolán, 2015

Guadebupe
1,5 mm



5372001168
Haplocochlias
arrondoii

F. Rubio, R. Fernández-Garcés,
& E. Rolán, 2013

Cuba



5372001169
Haplocochlias
bellus

(W.H. Dall, 1889)

Gulf of Mexico



synonyms:

● *Conradia bella* W.H. Dall, 1889

● *Fossarus bellus* W.H. Dall, 1889



5372000544
Haplocochlias
bieleri

F. Rubio, R. Fernández-Garcés,
& E. Rolán, 2013

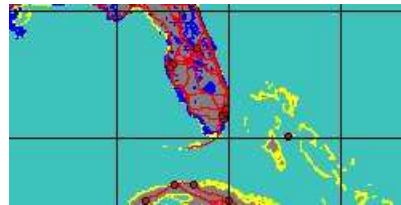
No Georeferenced data available



5066000717
Haplocochlias
calidimaris

(H.A. Pilsbry & J.T.L. McGinty, 1945)

Florida



5539752066
Haplocochlias
christopheri

F. Rubio & E. Rolán, 2015

Guadebupe
1,3 mm



5539752170
Haplocochlias
compactus

(Dall, 1889)

No Georeferenced data available



5066000714
Haplocochlias
concepcionensis

(H.N. Lowe, 1933)

Costa Rica



no
IMAGES
available

5066000505
Haplocochlias
cubensis

J. Espinosa, J.A. Ortea,
& R. Fernández-Garcés, 2007

Cuba



5066000504
Haplocochlias
cyclophoreus

P.P. Carpenter, 1864

Mexico, Mazatlan
5,1 mm



no
IMAGES
available

5066000711
Haplocochlias
erici

(A.M. Strong & L.G. Hertlein, 1939)

West America

No Georeferenced data available

synonyms:

- *Liotia erici* A.M. Strong & L.G. Hertlein, 1939



5066000709
Haplocochlias
francesae

(H.A. Pilsbry & J.T.L. McGinty, 1945)

Florida
3,4 mm



no
IMAGES
available

5372000548
Haplocochlias
garciai

F. Rubio, R. Fernández-Garcés,
& E. Rolán, 2013

Honduras, Roatan

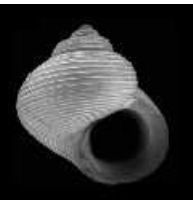


no
IMAGES
available

5372000569
Haplocochlias
harryleei

F. Rubio, R. Fernández-Garcés,
& E. Rolán, 2013

No Georeferenced data available



5539752075
Haplocochlias
karukera

F. Rubio & E. Rolán, 2015

Guadebupe
3,3 mm



no
IMAGES
available

5372001157
Haplocochlias
loperi

F. Rubio, E. Rolán & Y.C. Lee, 2013

No Georeferenced data available

no
IMAGES
available

5066000502
Haplocochlias
lucasensis
(A.M. Strong, 1934)
Mexico, Baja California

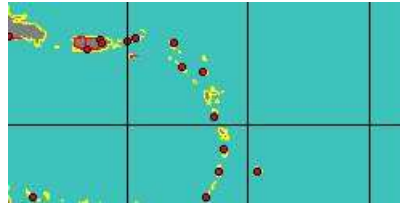


synonyms:

- *Arene lucasensis* A.M. Strong, 1934
- *Lotia lucasensis* A.M. Strong, 1934

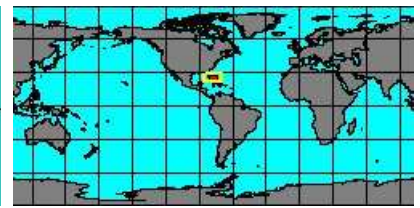
no
IMAGES
available

5372000025
Haplocochlias
lupita
J. Espinosa & J.A. Ortea, 2013
Guadebupe



no
IMAGES
available

5372001159
Haplocochlias
minusdentatus
F. Rubio, E. Rolán & C. Redfern, 2013
Bahamas



5066000500
Haplocochlias
moolenbeeki
D. De Jong & H.E. Coomans, 1988
Saint Vincent, Grenadines
4 mm



no
IMAGES
available

5372000580
Haplocochlias
multiliratus
F. Rubio, R. Fernández-Garcés,
& E. Rolán, 2013

No Georeferenced data available

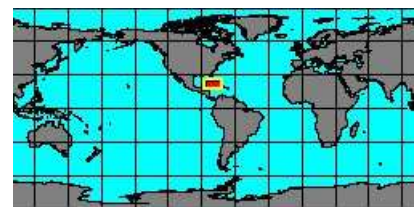


5066000499
Haplocochlias
nunezi
J. Espinosa, J.A. Ortea,
& R. Fernández-Garcés, 2005
Panama East
3 mm



no
IMAGES
available

5066000498
Haplocochlias
onaneyi
J. Espinosa, J.A. Ortea,
& R. Fernández-Garcés, 2005
Cuba



5066000497
Haplocochlias
ortizi
J. Espinosa, J.A. Ortea,
& R. Fernández-Garcés, 2005
Cuba
3 mm



no
IMAGES
available

5372000593
Haplocochlias
pacorubioi

F. Rubio, R. Fernández-Garcés,
& E. Rolán, 2013

No Georeferenced data available

no
IMAGES
available

5234000169
Haplocochlias
panamensis

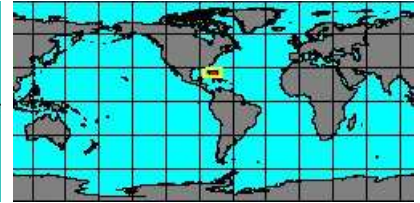
F. Rubio, R. Fernández-Garcés,
& E. Rolán, 2013

No Georeferenced data available

no
IMAGES
available

5372001158
Haplocochlias
pauciliratus

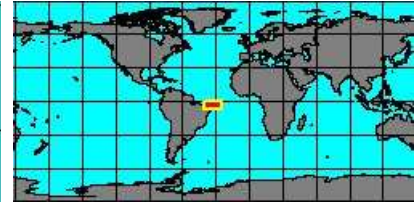
F. Rubio, E. Rolán & Y.C. Lee, 2013
Bahamas



no
IMAGES
available

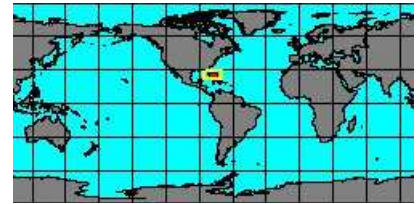
5066000496
Haplocochlias
risonoideneryae

J.C.N. Barros, F.N. Santos, E. Cabral,
& F.D. Acioli, 2002
Fernando de Noronha Island



5066000494
Haplocochlias
swifti

E.G. Vanatta, 1913
Bahamas
5 mm



5066000699
Haplocochlias
turbinus

(W.H. Dall, 1889)
Cuba



synonyms:

- Cyclostrema turbinum W.H. Dall, 1889
- Parviturbo turbinus W.H. Dall, 1889

no
IMAGES
available

5066000493
Haplocochlias
williami

J.C.N. Barros, F.N. Santos, E. Cabral,
& F.D. Acioli, 2002
Fernando de Noronha Island

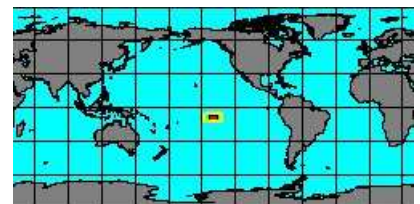
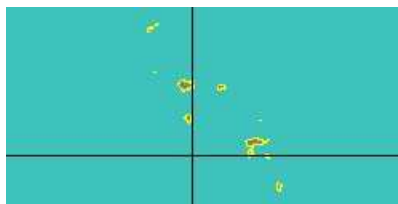


Subgenus: Haplocochlias (Lophocochlias) H.A. Pilsbry, 1921 (1 SP, 1 IMG)



5066000501
Lophocochlias
minutissimus

H.A. Pilsbry, 1921
French Polynesia
2 mm



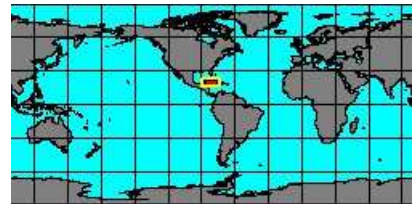
Genus: Itheyaspira T.A. Okutani, T. Sasaki & E. Tsuchida, 2000 (2 SP, 1 IMG)

no
IMAGES
available

5372001167
Itheyaspira
bathycodon

Nye, P.R. Copley, K. Linse,
& Plouviez, 2013

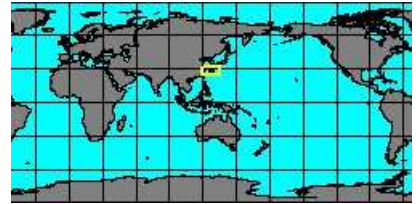
Caymans



5066000586
Itheyaspira
lequios

T.A. Okutani, T. Sasaki,
& E. Tsuchida, 2000

Okinawa Trough
6 mm



synonyms:

- *Itheyaspira lequios* T.A. Okutani, T. Sasaki & E. Tsuchida, 2000

Genus: Leucorhynchia J.C.H. Crosse, 1867 (11 SP, 5 IMG)

no
IMAGES
available

5192001417
Leucorhynchia
bicarinata

W. Adam & J. Knudsen, 1969

West Africa

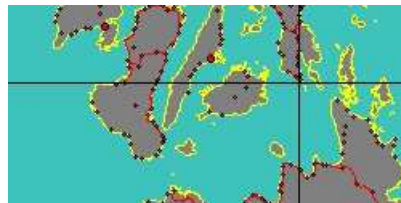
No Georeferenced data available



5066000602
Leucorhynchia
caledonica

J.C.H. Crosse, 1867

Philippines, Bohol Island
3,2 mm

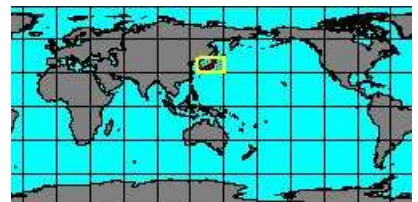
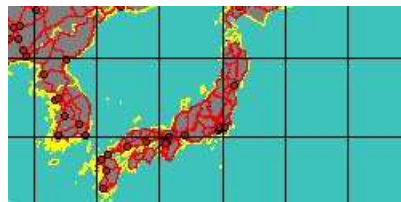


no
IMAGES
available

5066000825
Leucorhynchia
candida

(C.B. Adams, 1862)

Japan



5066000600
Leucorhynchia
crossei

G.W. Tryon, 1888

Philippines, Mactan Island
3,2 mm



5352000020
Leucorhynchia
gorii

E. Roján & F. Rubio, 2012

Sao Tomè Island



no
IMAGES
available

5066000376
Leucorhynchia
lirata

(E.A. Smith, 1872)

Angola



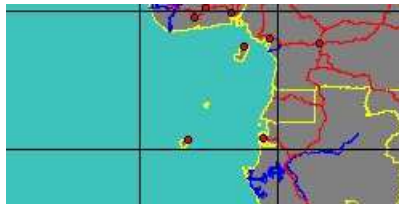
synonyms:

- *Ethaia lirata* E.A. Smith, 1872



5372000478
Leucorhynchia
minor

E. Rolán & S. Gori, 2013
Sao Tomè Island



5539752104
Leucorhynchia
plicata

(E.A. Smith, 1872)

No Georeferenced data available



5192001416
Leucorhynchia
punctata

(F.P. Jousseume, 1872)
Senegal, Goree Island
16 mm



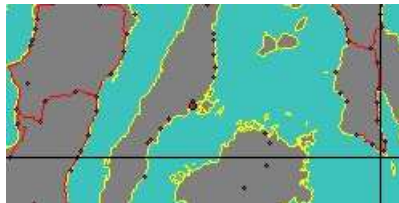
synonyms:

- *Teinostoma dalli* P. Dautzenberg, 1912
- *Teinostoma punctatum* F.P. Jousseume, 1872



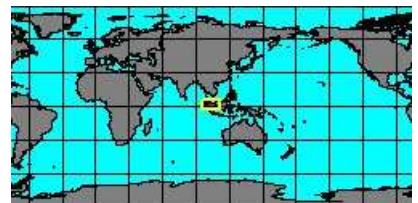
5066000598
Leucorhynchia
tricarinata

J.C. Melvill & R. Standen, 1896
Philippines, Mactan Island
5 mm



5066000597
Leucorhynchia
tryoni

H.A. Pilsbry, 1891
Singapore

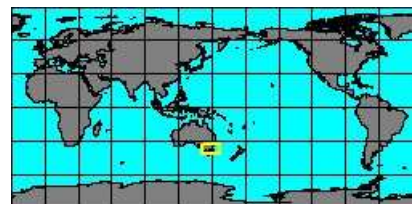


Genus: Liocarinia C.F. Laseron, 1954 (1 SP, 1 IMG)



5066000212
Liocarinia
disjuncta

(C. Hedley, 1903)
Cape Everard, Australia

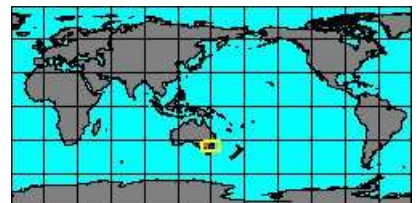


Genus: Liotella T. Iredale, 1915 (20 SP, 9 IMG)



5066000223
Liotella
annulata

(J.E. Tenison-Woods, 1874)
Gerringong, Australia



synonyms:

- *Liotella patonga* C.F. Laseron, 1954

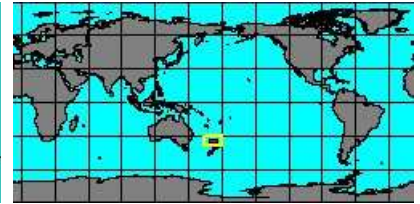
no
IMAGES
available

535200038
Liotella
anxia
(C. Hedley, 1909)

No Georeferenced data available

no
IMAGES
available

506600222
Liotella
aupouria
A.W.B. Powell, 1937
New Zealand, Three Kings Islands



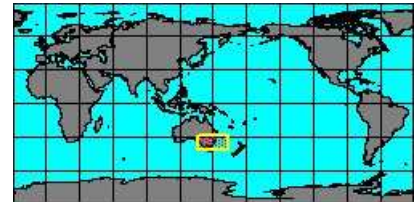
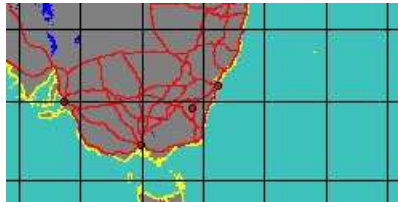
no
IMAGES
available

535200035
Liotella
cancellata
(C.F.F. von Krauss, 1848)

No Georeferenced data available

no
IMAGES
available

506600221
Liotella
capitata
(C. Hedley, 1907)
New South Wales



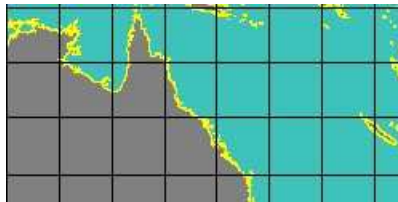
no
IMAGES
available

506600220
Liotella
compacta
(W.F. Petterd, 1884)
New South Wales



no
IMAGES
available

535200039
Liotella
corona
(C. Hedley, 1902)
Queensland



no
IMAGES
available

5539752105
Liotella
crassicostata
(Strebel, 1908)

No Georeferenced data available

no
IMAGES
available

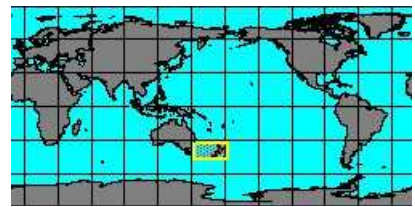
506600480
Liotella
elegans
C.F. Laseron, 1958
Northern Territory





5066000219
Liotella
endeavourensis

R.K. Dell, 1990
New Zealand



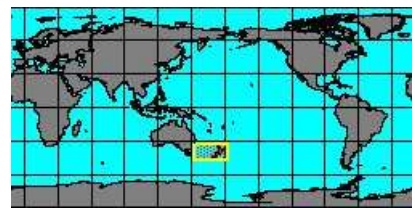
synonyms:

- *Liotella endeavourensis* R.K. Dell, 1990



5066000218
Liotella
indigena

H.J. Finlay, 1926
New Zealand



5066000188
Liotella
johnstoni

(R.H. Beddome, 1883)
Australia, Newcastle
1 mm



synonyms:

- *Cyclostrema johnstoni* R.H. Beddome, 1883
- *Brookula johnstoni* R.H. Beddome, 1883
- *Liotella princeps* C.F. Laseron, 1954
- *Liotella littoralis* C.F. Laseron, 1954



5066000476
Liotella
kicundae

(J.H. Gatliff & C.J. Gabriel, 1914)
Port Stephens, Australia



synonyms:

- *Cyclostrema kicundae* J.H. Gatliff & C.J. Gabriel, 1914
- *Liotella parvirota* C.F. Laseron, 1954



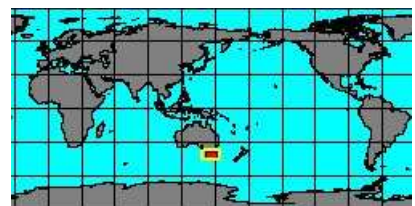
5066000217
Liotella
mackenae

R.K. Dell, 1956
New Zealand



5066000181
Liotella
petalifera

(C. Hedley & W.L. May, 1908)
Tasmania



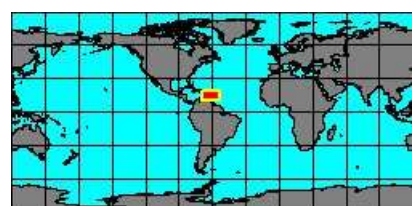
synonyms:

- *Liotella gravicosta* C.F. Laseron, 1954
- *Brookula petalifera* C. Hedley & W.L. May, 1908



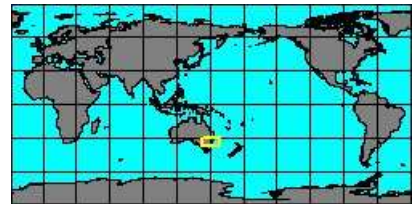
5066000215
Liotella
polypleura

(C. Hedley, 1904)
West Indies
0,9 mm





5066000471
Liotella pulcherrima
(J.W. Brazier in A. Henn, & J.W. Brazier, 1894)
Australia, Sydney
1 mm



synonyms:

- Omabgyra pulcherrima J.W. Brazier in A. Henn & J.W. Brazier, 1894



5066000214
Liotella rotula
(H.H. Suter, 1908)
New Zealand



synonyms:

- Liotia rotula H.H. Suter, 1908



5066000213
Liotella rotuloides
A.W.B. Powell, 1937

No Georeferenced data available



5066000468
Liotella vercoi
(J.H. Gatliff & C.J. Gabriel, 1914)

No Georeferenced data available

synonyms:

- Cyclostrema vercoi J.H. Gatliff & C.J. Gabriel, 1914

Genus: Lissomphalia A. Warén, 1992 (1 SP, 1 IMG)



5066000603
Lissomphalia bithynoides
(T.A. de M. Monterosato, 1880)
Corse Island, France
1 mm



synonyms:

- Cyclostrema bithynoides T.A. de M. Monterosato, 1880
- Lissomphalia sabelli C. Bogi & I. Nofroni, 1989
- Lissospira bithynoides J.G. Jeffreys, 1883

Genus: Lissospira K.J. Bush, 1897 (11 SP, 1 IMG)



5066000467
Lissospira abyssicola
K.J. Bush, 1897
America

No Georeferenced data available



5066000464
Lissospira bujnitzkii
(G.P. Gorbunov, 1946)

No Georeferenced data available

synonyms:

- Skenea bujnitzkii G.P. Gorbunov, 1946

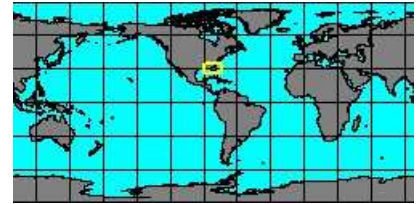
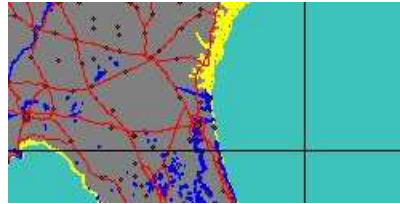
no
IMAGES
available

5066000463
Lissospira
bushae
(W.H. Dall, 1927)
America

No Georeferenced data available

no
IMAGES
available

5066000462
Lissospira
conica
(W.H. Dall, 1927)
Georgia, Fernandina



synonyms:

- Ganesa conica W.H. Dall, 1927

no
IMAGES
available

5066000461
Lissospira
convexa
K.J. Bush, 1897
America

No Georeferenced data available



5066000460
Lissospira
dalli
(A.E. Verrill, 1882)
USA, North Carolina
1,4 mm



no
IMAGES
available

5066000459
Lissospira
depressa
(W.H. Dall, 1927)
North Carolina, USA



no
IMAGES
available

5066000455
Lissospira
ornata
(A.E. Verrill, 1884)
America

No Georeferenced data available

synonyms:

- Cyclostrema ornatum A.E. Verrill, 1884

no
IMAGES
available

5066000449
Lissospira
rarinota
K.J. Bush, 1897

No Georeferenced data available

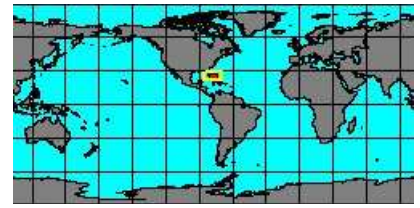
no
IMAGES
available

5066000445
Lissospira
striata
K.J. Bush, 1897
America

No Georeferenced data available

no
IMAGES
available

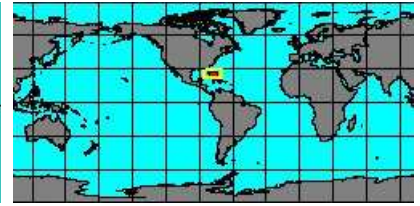
5066000442
Lissospira
valvata
(W.H. Dall, 1927)
Bahamas



Genus: Lodderena T. Iredale, 1924 (11 SP, 7 IMG)



5066000659
Lodderena
bunnelli
C. Redfern & E. Rolán, 2005
Bahamas



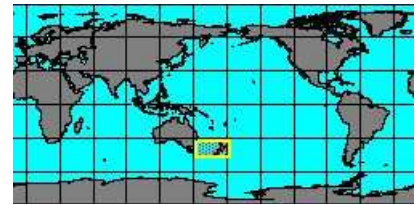
no
IMAGES
available

5234000171
Lodderena
emeryi
(H.S. Ladd, 1966)

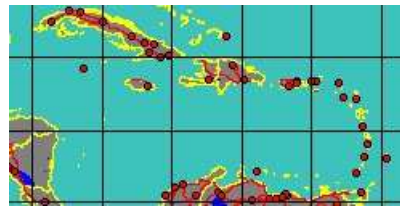
No Georeferenced data available



5066000655
Lodderena
formosa
A.W.B. Powell, 1930
New Zealand



5066000654
Lodderena
janetmayae
F. Rubio, E. Rolán & C. Redfern, 1998
Caribbean
0,8 mm



5066000653
Lodderena
minima
(J.E. Tenison-Woods, 1878)
Port Stephens, Australia
0,9 mm



5066000651
Lodderena
nana
A.W.B. Powell, 1930
New Zealand



no
IMAGES
available

5066000652
Lodderena
nana
pooki
C.A. Fleming, 1948
New Zealand



no
IMAGES
available

5066000650
Lodderena
omanensis
R.G. Moolenbeek, 1996

No Georeferenced data available



5066000409
Lodderena
ornata
(A.A. Olsson & J.T.L. McGinty, 1958)
Cape Verde



synonyms:

● Cyclostremiscus ornatus A.A. Olsson & J.T.L. McGinty, 1958

● Cyclostremiscus solitarius L.G. Hertlein & E.C. Allison, 1968

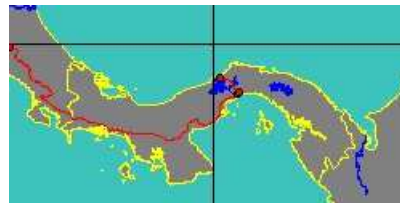
no
IMAGES
available

5234000172
Lodderena
pachynepion
(H.A. Pilsbry & A.A. Olsson, 1945)

No Georeferenced data available



5066000407
Lodderena
pulchella
(A.A. Olsson & J.T.L. McGinty, 1958)
Panama
0,8 mm



no
IMAGES
available

5066000649
Lodderena
tanae
R.G. Moolenbeek, 1996

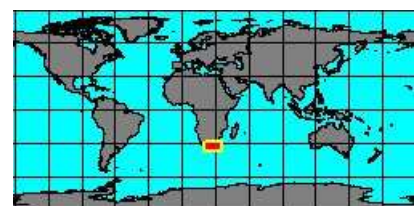
No Georeferenced data available

Genus: Lodderia R. Tate, 1899 (9 SP, 3 IMG)

no
IMAGES
available

to be checked

5066000668
Lodderia
africana
P. Bartsch, 1915
South Africa



5066000333
Lodderia
coatsiana
(J.C. Melville & R. Standen, 1912)
Burdwood Bank, Argentina
4 mm



synonyms:

● Cyclostrema coatsianum J.C. Melville & R. Standen, 1912

no
IMAGES
available

to be checked

5066000666
Lodderia
edwardiense
R.B. Watson, 1881

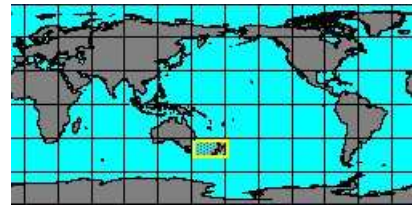
No Georeferenced data available



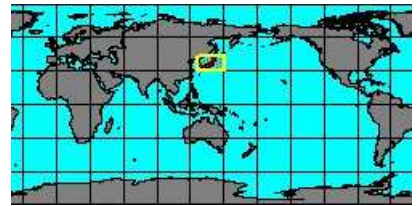
5066000656
Lodderia eumorpha
 (H.H. Suter, 1908)
 New Zealand



5066000657
Lodderia eumorpha cookiana
 (R.K. Dell, 1952)
 New Zealand



5066000665
Lodderia fuscocephala
 K. Oyama, 1953
 Japan



5066000664
Lodderia iota
 A.W.B. Powell, 1940
 New Zealand



5066000663
Lodderia lodderae
 (W.F. Petterd, 1884)
 New Caledonia



5066000662
Lodderia novemcarinata
 (J.C. Melville, 1906)
 Muscat, Oman
 4,3 mm



synonyms:

- *Vitrinella novemcarinata* J.C. Melville, 1906
- *Cyclostrema novemcarinatum* J.C. Melville, 1906
- *Cyclostremiscus novemcarinatus* J.C. Melville, 1906



5066000660
Lodderia waitemata
 A.W.B. Powell, 1940
 New Zealand



Genus: Lopheliella L. Hoffman, B. van Heugten & M.S.S. Lavaleye, 2008 (4 SP, 4 IMG)



5066000673
Lopheliella hermesae
 L. Hoffman, B. van Heugten,
 & M.S.S. Lavaleye, 2008
 Ireland, Rockall trough
 2,5 mm

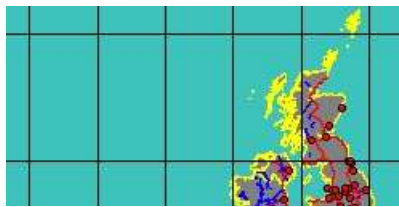




5066000672
Lopheliella
moolenbeeki

L. Hoffman, B. van Heugten,
& M.S.S. Lavaley, 2008

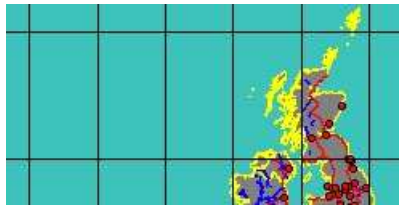
Ireland, Rockall trough
2 mm



5066000670
Lopheliella
moundforcae

L. Hoffman, B. van Heugten,
& M.S.S. Lavaley, 2008

Ireland, Rockall trough
1,2 mm



synonyms:

- *Lopheliella moundforcae* L. Hoffman, B. van Heugten & M.S.S. Lavaley, 2008



5066000669
Lopheliella
rockallensis

L. Hoffman, B. van Heugten,
& M.S.S. Lavaley, 2008

Rockall trough, Ireland
3 mm



Genus: Mikro A. Warén, 1996 (4 SP, 3 IMG)



1020000025
Mikro
cerion

(W.H. Dall, 1927)

America

No Georeferenced data available

synonyms:

- *Vitrinella cerion* W.H. Dall, 1927



5066000014
Mikro
giustii

(C. Bogi & I. Nofroni, 1989)

Iceland
0,7 mm



synonyms:

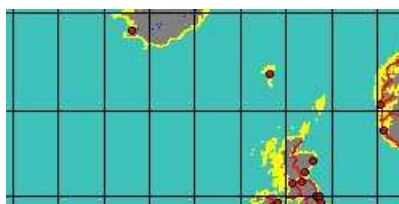
- *Anekes giustii* C. Bogi & I. Nofroni, 1989



5066000682
Mikro
globulus

A. Warén, 1996

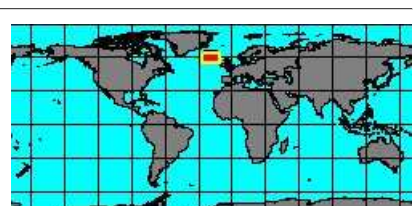
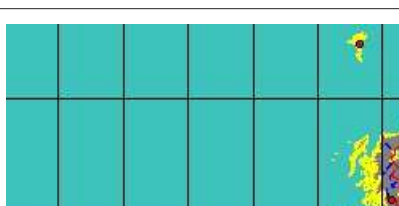
Hatton Bank, 700 m depth
1 mm



5066000681
Mikro
hattonensis

L. Hoffman, B. van Heugten,
& M.S.S. Lavaley, 2010

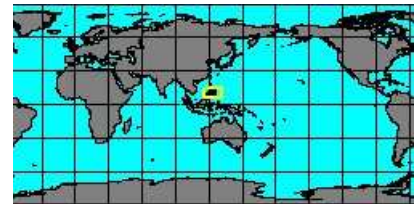
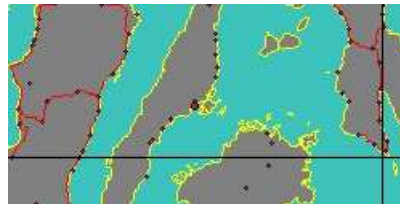
Hatton Bank
0,8 mm



Genus: Munditiella J.T. Kuroda & T. Habe, 1952 (3 SP, 1 IMG)



103040000
**Munditiella
 ammonoceras**
 (A. Adams, 1863)
 Philippines, Mactan Island
 2,5 mm

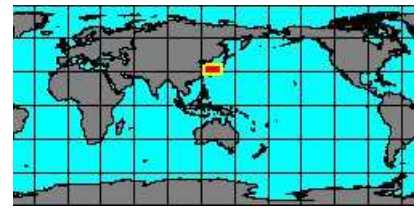
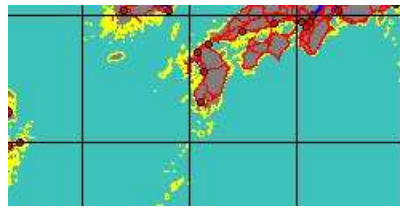


synonyms:

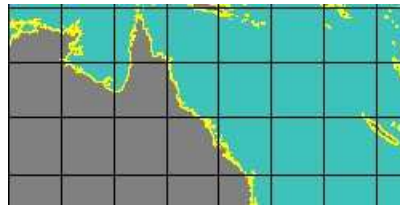
- *Cyclostrema ammonoceras* A. Adams, 1863



1030507060
**Munditiella
 kirai**
 (T. Habe, 1961)
 Japan, Kagoshima



1030505720
**Munditiella
 qualum**
 (C. Hedley, 1899)
 Queensland



Genus: Partubiola T. Iredale, 1936 (1 SP, 0 IMG)



5066000917
**Partubiola
 blancha**
 T. Iredale, 1936
 New South Wales



Genus: Parviturbo H.A. Pilsbry & J.T.L. McGinty, 1945 (36 SP, 8 IMG)



5066000719
**Parviturbo
 acuticostatus**
 (P.P. Carpenter, 1864)
 Mexico, Baja California

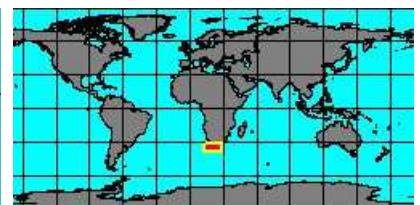


synonyms:

- *Liotia acuticostata* MANCA Carpenter
- *Fossarus angiolus* W.H. Dall, 1919



5539752176
**Parviturbo
 agulhaensis**
 (K.H.J. Thiele, 1925)
 Agulhas Bank, South Africa

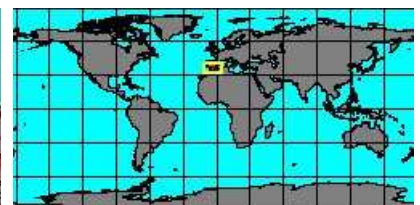
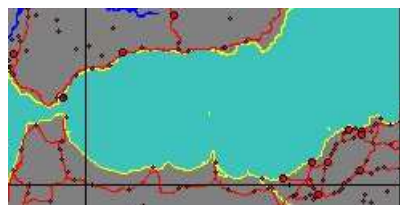


synonyms:

- *Vitrinella agulhasensis* K.H.J. Thiele, 1925

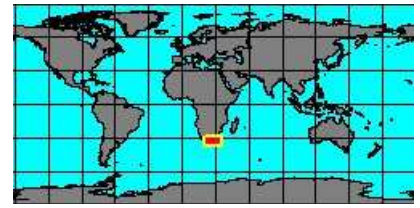


5066000718
**Parviturbo
 alboranensis**
 A. Peñas & E. Rolán, 2006
 Alboran Sea



no
IMAGES
available

5066000726
Parviturbo
alfredensis
P. Bartsch, 1915
South Africa



synonyms:

- *Pondorbis alfredensis* P. Bartsch, 1915

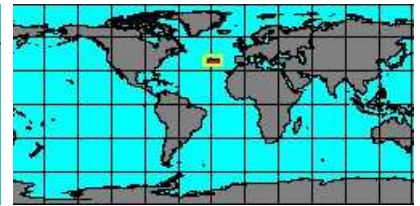
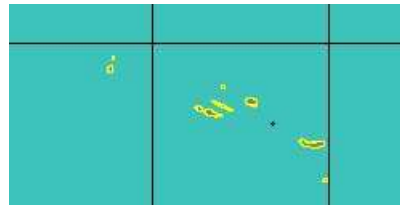
no
IMAGES
available

5539752076
Parviturbo
annejoffeae
Rubio, Rolán & Lee, 2015
Trinidad and Tobago



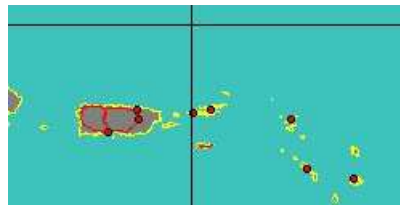
no
IMAGES
available

5539752077
Parviturbo
azoricus
F. Rubio, E. Rolán & W. Segers, 2015
Azores



no
IMAGES
available

5539752078
Parviturbo
billfranki
Rubio, Rolán & Lee, 2015
Virgin Islands



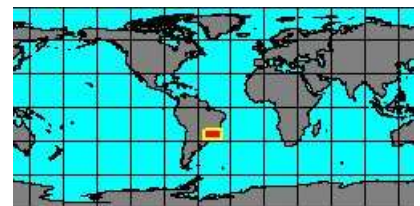
no
IMAGES
available

5539752079
Parviturbo
boucheti
F. Rubio, E. Rolán,
& R. Fernández-Garcés, 2015
Guadeloupe



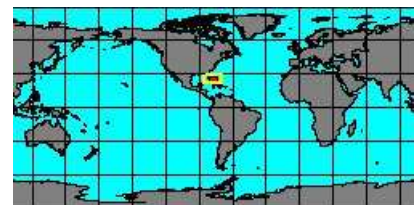
no
IMAGES
available

5539752080
Parviturbo
brasiliensis
Rubio, Rolán & Lee, 2015
Brasil, Sao Paulo



no
IMAGES
available

5066000715
Parviturbo
comptus
(W.P. Woodring, 1928)
Bahamas



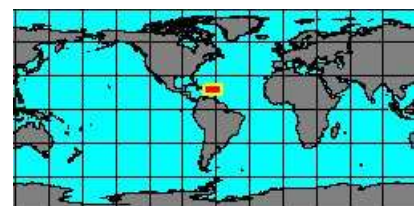
synonyms:

- *Fossarus comptus* W.P. Woodring, 1928

- *Parviturboides comptus* W.P. Woodring, 1928

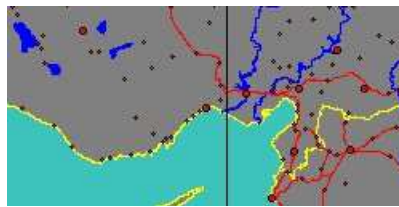
no
IMAGES
available

5539752081
Parviturbo
dengyanzhangii
Rubio, Rolán & Lee, 2015
Antigua Island





5066000713
Parviturbo
dibellai
G. Buzzurro & A. Cecalupo, 2007
Turkey, Mersin
2 mm



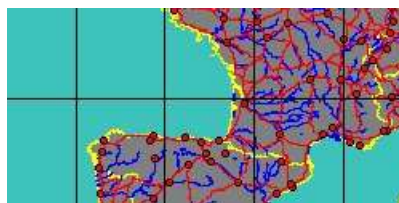
5539752082
Parviturbo
dispar
F. Rubio, E. Rolán & J. Letourneux, 2015
French Polynesia, Gambier Archipelago



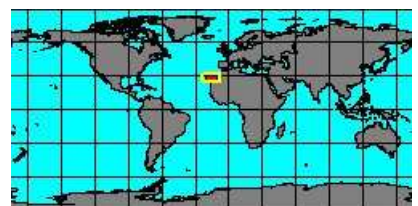
5066000712
Parviturbo
elegantulus
(R.A. Philippi, 1844)
Italy, Elba Island
1,7 mm



5539752083
Parviturbo
ergasticus
F. Rubio, E. Rolán & S. Gofas, 2015
Bay of Biscay



5066000710
Parviturbo
fenestratus
(G.W. Chaster, 1896)
Canary Islands
1,7 mm



5539752084
Parviturbo
fortius
F. Rubio, E. Rolán,
& R. Fernández-Garcés, 2015
Guadebupe



5539752085
Parviturbo
gofasi
F. Rubio, E. Rolán,
& R. Fernández-Garcés, 2015
Venezuela



5066000707
Parviturbo
granulum
(W.H. Dall, 1889)
Dominican Republic

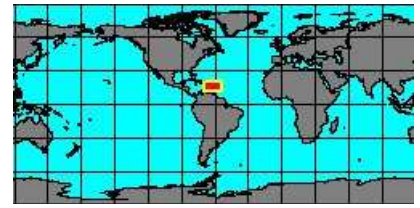
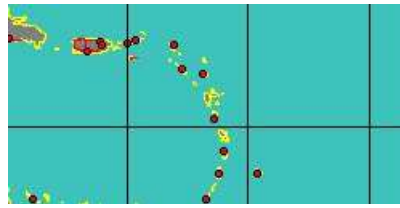


no
IMAGES
available

5539752086
Parviturbo
gadeloupensis

F. Rubio, E. Rolán,
& R. Fernández-Garcés, 2015

Guadebupe



5066000706
Parviturbo
insularis

E. Rolán, 1988

Canary Islands
1 mm

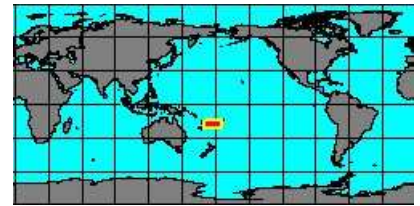


no
IMAGES
available

5539752087
Parviturbo
javiercondei

F. Rubio, E. Rolán,
& R. Fernández-Garcés, 2015

Fiji Islands

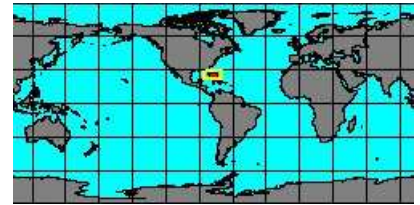


no
IMAGES
available

5539752088
Parviturbo
marcosi

F. Rubio, E. Rolán,
& R. Fernández-Garcés, 2015

Bahamas



no
IMAGES
available

5539752089
Parviturbo
multispiralis

F. Rubio, E. Rolán,
& R. Fernández-Garcés, 2015

Cape Verde

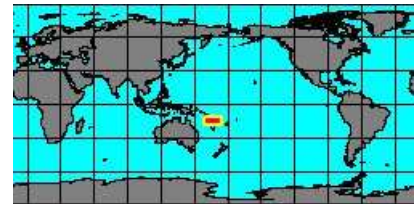


no
IMAGES
available

5539752090
Parviturbo
pombali

F. Rubio, E. Rolán,
& R. Fernández-Garcés, 2015

Vanuatu



no
IMAGES
available

5539752091
Parviturbo
rectangularis

F. Rubio, E. Rolán,
& R. Fernández-Garcés, 2015

Guadebupe



5066000704
Parviturbo
rehderi

H.A. Pilsbry & J.T.L. McGinty, 1945

Florida
1,5 mm





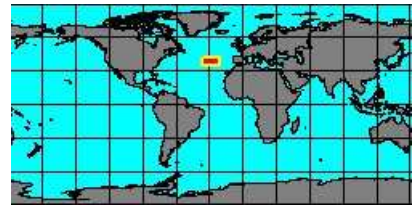
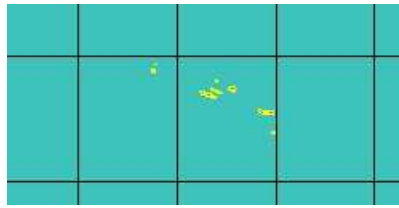
5539752092
Parviturbo robustior
 Rubio, Rolán & Lee, 2015
 Bahamas, Turks & Caicos



5066000703
Parviturbo rolandi
 W. Engl, 2001
 Canary Islands
 1 mm



5539752093
Parviturbo seamountensis
 F. Rubio, E. Rolán & S. Gofas, 2015
 Great Meteor Bank



5066000702
Parviturbo sphaeroidea
 (J.G. Jeffreys, 1883)

No Georeferenced data available

to be checked



5066000701
Parviturbo stearnsii
 (W.H. Dall, 1918)
 Costa Rica



synonyms:

● *Liotia acuticostata stearnsii* W.H. Dall, 1918

● *Liotia heimi* A.M. Strong & L.G. Hertlein, 1939



5066000700
Parviturbo tuberculosus
 (A.V.M.D. D'Orbigny, 1842)
 Cuba

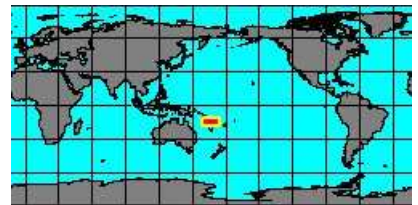


synonyms:

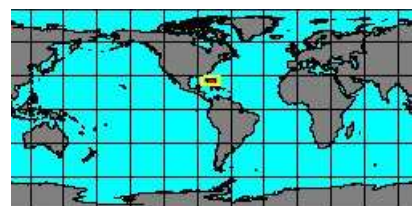
● *Delphinula tuberculosus* A.V.M.D. D'Orbigny, 1842



5539752094
Parviturbo vanuatuensis
 F. Rubio, E. Rolán,
 & R. Fernández-Garcés, 2015
 Vanuatu

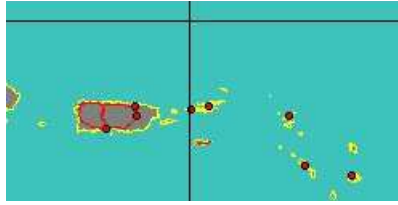


5066000698
Parviturbo weberi
 H.A. Pilsbry & J.T.L. McGinty, 1945
 Bahamas
 1,7 mm



no
IMAGES
available

5539752095
Parviturbo
zylmanae
Rubio, Rolán & Lee, 2015
Virgin Islands



Genus: Philorene W.R.B. Oliver, 1915 (1 SP, 0 IMG)

no
IMAGES
available

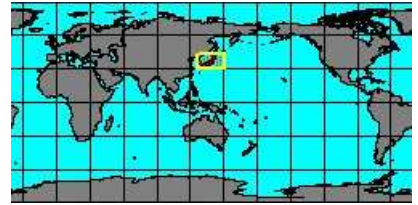
5066000721
Philorene
texturata
W.R.B. Oliver, 1915
New Zealand



Genus: Pondorbis P. Bartsch, 1915 (1 SP, 0 IMG)

no
IMAGES
available

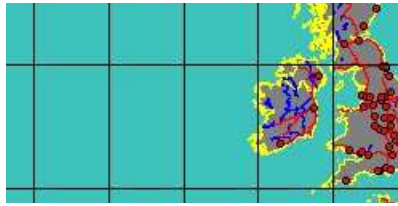
5066000724
Pondorbis
rotella
K. Oyama, 1953
Japan



Genus: Protolira A. Warén & P. Bouchet, 1993 (2 SP, 1 IMG)



5066000730
Protolira
thorvaldssoni
A. Warén, 1996
Bank Porcupine
1,5 mm



no
IMAGES
available

5066000729
Protolira
valvatoides
A. Warén & P. Bouchet, 1993
Central Atlantic



Genus: Pseudorbis T.A. de M. Monterosato, 1884 (2 SP, 2 IMG)



5066000733
Pseudorbis
granulum
(G.A. Brugnone, 1873)
Trapani, Sicily
1,2 mm



synonyms:

- Fossarus granulum G.A. Brugnone, 1873
- Pseudorbis granum G.A. Brugnone, 1873



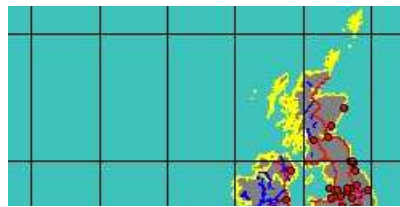
5066000731
Pseudorbis
jameoensis
F. Rubio & C. Rodríguez Babio, 1991
Canary Islands, Lanzarote
0,7 mm



Genus: Skenea J. Fleming, 1825 (syn: Delphinoidea, Delphinoidea, Skeneia - 40 SP, 18 IMG)



5066000829
**Skenea
areolata**
(G.O. Sars, 1878)
Rockall trough, Ireland
1 mm



synonyms:

- *Skenea areolatum* G.O. Sars, 1878



5066000828
**Skenea
basistriata**
(J.G. Jeffreys, 1877)
Norway, Trondelag
2 mm



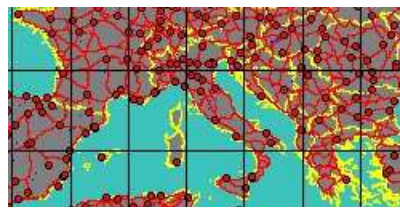
synonyms:

- *Cyclostrema affine* A.E. Verrill, 1884
- *Cyclostrema willi* H.B.S. Friele, 1886

- *Cyclostrema proximum* G.W. Tryon, 1888



5066000827
**Skenea
bythinoides**
J.G. Jeffreys, 1875
Italy



5066000826
**Skenea
californica**
(P. Bartsch, 1907)
America

No Georeferenced data available

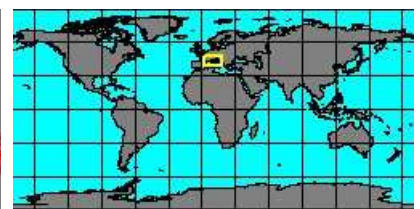


5066000824
**Skenea
carmelensis**
A.G. Smith & W.J. Gordon, 1948
America

No Georeferenced data available



5066000658
**Skenea
catenoides**
(T.A. de M. Monterosato, 1877)
Italy, Livorno
1,2 mm



5066000823
**Skenea
concordia**
(P. Bartsch, 1920)
America

No Georeferenced data available

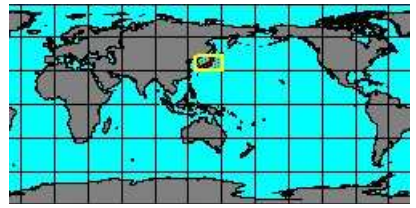
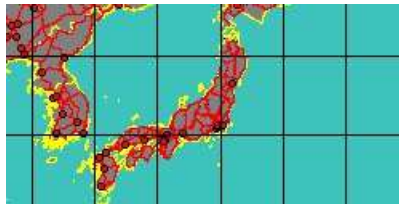


5066000822
**Skenea
coronadoensis**
(R. Arnold, 1903)
America

No Georeferenced data available

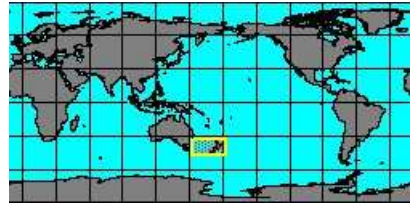
no
IMAGES
available
to be checked

5066000821
Skenea
crossi
G.W. Tryon, 1888
Japan



no
IMAGES
available

5066000819
Skenea
diaphana
(A.E. Verrill, 1884)
New Zealand



5066000818
Skenea
divae
F. Carrozza & J.J. Van Aartsen, 2001
Italy, Civitavecchia
0,5 mm



no
IMAGES
available

5066000815
Skenea
ferruginea
A. Warén, 1991

No Georeferenced data available

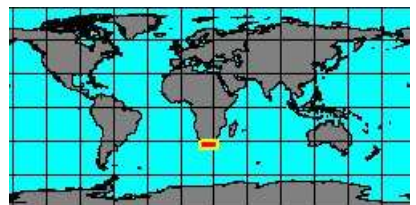
no
IMAGES
available
to be checked

5066000814
Skenea
funazzensis
A. De Gregorio, 1890
Sicily

No Georeferenced data available



5066000813
Skenea
fuscomaculata
G.B. Sowerby, 1892
South Africa, Jeffreys Bay
3,2 mm



no
IMAGES
available

5539752135
Skenea
giemellorum
Romani, Bogi & Bartolini, 2015

No Georeferenced data available



5066000810
Skenea
larseni
A. Warén, 1993
Rockal trough, Ireland
1 mm





506600808
Skenea
millepunctata
H.B.S. Friele, 1880
Northern Atlantic

No Georeferenced data available

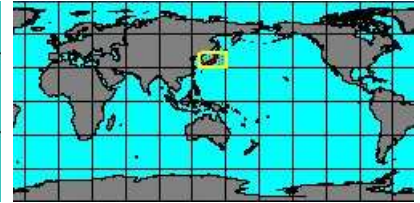
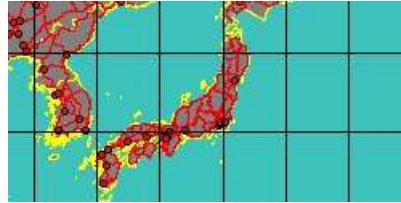


506600807
Skenea
minuta
J.G. Jeffreys, 1883
Europe

No Georeferenced data available



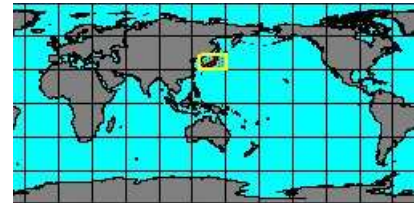
506600806
Skenea
mirabile
J.T. Kuroda & T. Habe, 1991
Japan



506600803
Skenea
nilarum
W. Engl, 1996
Canary Islands, Lanzarote
0,8 mm



506600802
Skenea
nipponica
M. Yokoyama, 1920
Japan



506600800
Skenea
olgae
W. Segers, F. Swinnen,
& R. De Prins, 2009
Portugal, Madeira
1 mm



506600799
Skenea
ossiansarsi
A. Warén, 1991
Rockal trough, Ireland
2 mm

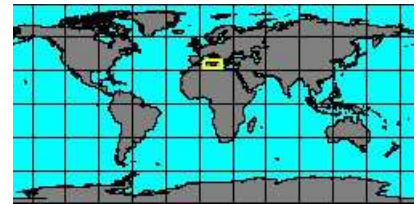


synonyms:

- *Skenea laevigatum* G.O. Sars, 1878



506600797
Skenea
pelagia
I. Nofroni & Valenti, 1987
Italy, Lampedusa
1,3 mm

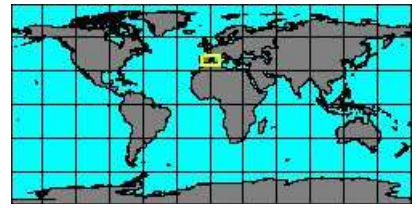


synonyms:

- *Skenea pelagica* I. Nofroni & Valenti, 1987



5066000796
Skenea
pellucidoides
F. Nordsieck, 1982
Ibiza, Spain



5066000795
Skenea
peterseni
(H.B.S. Friele, 1877)
Norway, Trondelag
1,4 mm



5066000794
Skenea
polita
A. Warén, 1993
Rockal trough, Ireland
1,6 mm



5066000452
Skenea
ponsonbyi
(P. Dautzenberg & H. Fischer, 1897)

No Georeferenced data available



5066000793
Skenea
profunda
(H.B.S. Friele, 1879)
Rockal trough, Ireland
2,2 mm



5066000450
Skenea
proxima
(G.W. Tryon, 1888)
America

No Georeferenced data available



5066000790
Skenea
rugulosa
(G.O. Sars, 1878)
Rockal trough, Ireland
1 mm

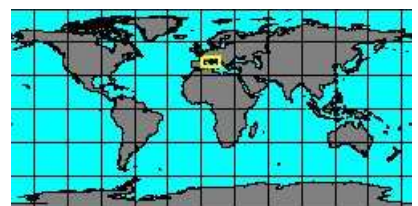


synonyms:

- Ganesa regulosa G.O. Sars, 1878
- Cyclostrema rugulosum G.O. Sars, 1878



5066000789
Skenea
serpuloides
(G. Montagu, 1808)
Corse Island, France
1 mm



synonyms:

- Skenea divisa E. Forbes & S.C.T. Hanley, 1853
- Skenea laevis R.A. Philippi, 1844

- Helix serpuloides G. Montagu, 1808



5066000786
Skenea
sphaeroides

S.V. Wood, 1850

Europe

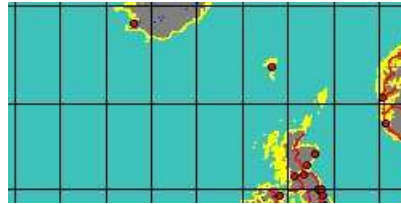
No Georeferenced data available



5066000783
Skenea
trochoides

(H.B.S. Friele, 1876)

Hatton Bank, 700 m depth
2,2 mm



synonyms:

- *Moelleria laevigata* H.B.S. Friele, 1876
- *Skenea laevigata* H.B.S. Friele, 1876

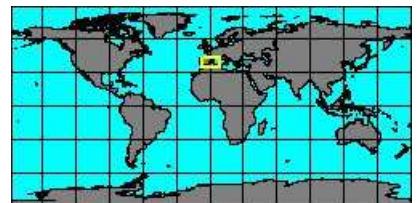
- *Skenea laevigata* J.G. Jeffreys, 1876



5066000782
Skenea
trochoides
minutissima

F. Nordsieck, 1982

Ibiza, Spain



5066000443
Skenea
turgida

(N.H. Odhner, 1912)

Rockal trough, Ireland
2 mm



5066000687
Skenea
valvatoides

(J.G. Jeffreys, 1883)

Brasil
3,2 mm

No Georeferenced data available

synonyms:

- *Moelleriopsis valvatoides* J.G. Jeffreys, 1883



5066000781
Skenea
vatovai

F. Nordsieck, 1974

Ionian Sea



5066000780
Skenea
vestiarium

J.H.F. Link, 1807

Mediterranean Sea



5066000779
Skenea
victori

W. Segers, F. Swinnen,
& R. De Prins, 2009

No Georeferenced data available

no
IMAGES
available

5066000777
Skenea
willei
H.B.S. Friele, 1886

No Georeferenced data available

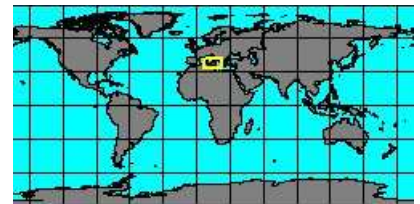
Genus: **Skeneoides** A. Warén, 1992 (3 SP, 3 IMG)



5066000832
Skeneoides
digeronimoi
R. La Perna, 1999
Ustica Island, Italy
1 mm



5066000831
Skeneoides
exilissima
(R.A. Philippi, 1844)
Catania, Italy
1,1 mm



synonyms:

- *Skeneoides dautzenbergianum* C.M.F. Ancey, 1898
- *Cyclostrema subalveolatum* M. Fekih & L. Gougerot, 1974

- *Angaria exilissima* R.A. Philippi, 1844
- *Skeneoides subalveolatum* M. Fekih & L. Gougerot, 1974



5066000830
Skeneoides
jeffreysii
(T.A. de M. Monterosato, 1872)
Sicily, Trapani
1 mm



synonyms:

- *Delphinula costata* F. Danilo & G.B. Sandri, 1856
- *Skeneoides formosissimus* G.A. Brugnone, 1873

- *Skeneoides formosissima* F. Ghisotti, 1977
- *Circulus jeffreysii* T.A. de M. Monterosato, 1872

Genus: **Tasmocrossea** R.K. Dell, 1952 (1 SP, 1 IMG)



5066000208
Tasmocrossea
benthicola
R.K. Dell, 1952
New Zealand



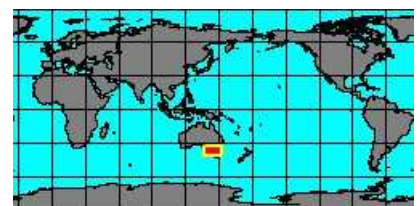
Genus: **Zalipais** T. Iredale, 1915 (4 SP, 1 IMG)



5352000027
Zalipais
benthicola
A.W.B. Powell, 1927
New Zealand



5352000026
Zalipais
bruniense
(R.H. Beddome, 1885)
Australa, Victoria

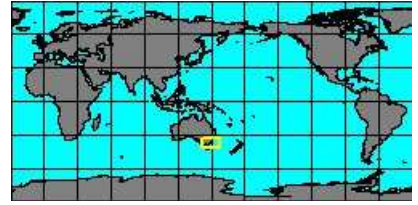




5352000025
**Zalipais
inscripta**

(R. Tate, 1899)

Batemans Bay, Australia
1 mm



synonyms:

- *Lissotesta inscripta* R. Tate, 1899
- *Zalipais issa* H.H. Suter, 1908

- *Zalipais laseyroni* J.A. Kershaw, 1955



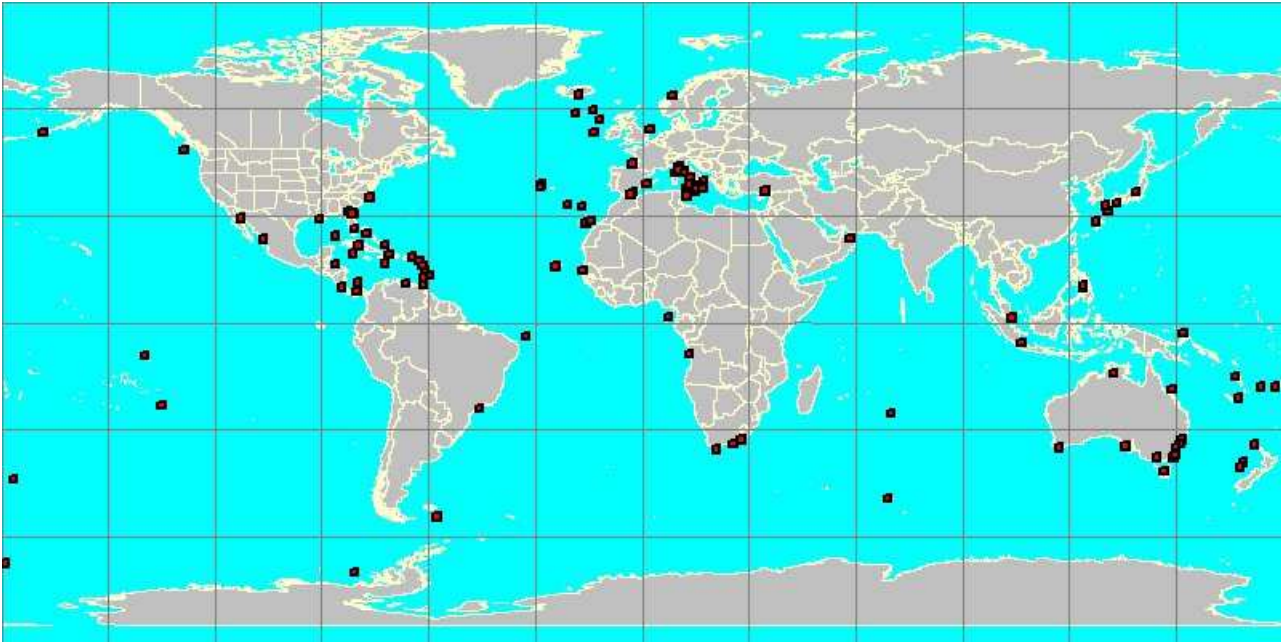
5352000024
**Zalipais
turneri**

A.W.B. Powell, 1939

New Zealand



Family: SKENEIDAE



red squares show where each species has been georeferenced

each square has a size of 2 degrees

an interactive version of this image can be accessed at
<http://www.bagniliggia.it/WMSD/FamilyMap/SKENEIDAEmap.htm>

please note that this is not the complete coverage of this family
the Data Base is not exhaustive and only one specimen per species has been georeferenced

this map is only the graphic summary of the WMSDB Data Base up to now
the total number of georeferenced species in this map is: 217 from a total of 263