

## SK1-200 Series

### Compact and Easy-to-Integrate Kiosk Printers

The SK1-200 Series provides a range of dependable, maintenance-free 2-inch kiosk printers which print at a fast speed of 250mm/sec with 203 dpi resolution.

Available with many options, the SK1-200 Series is available in either standard format (horizontal orientation) with and without presenter, drop-in paper loading without presenter, or vertical format (vertical orientation) with and without front paper loading. Both standard and vertical formats come equipped with RS-232C and USB interface which integrates with many commonly used kiosk solutions.

Easily adaptable, the SK1-221 printers offer a compact design, featuring a bucket to drop in the paper roll, and accommodates a variety of applications for kiosks where space is a concern.

The SK1-200 Series ships standard with StarPRNT emulation, which allows software developers to take advantage of the full stack of Star Micronics technology, such as the StarPRNT SDKs and Star's powerful line of drivers. Software developers that have already integrated Star products can now easily swap or extend their applications from a desktop printer to a kiosk printer. ESC/POS is still available for legacy integration.

The SK1-24 vertical format printer with front paper loading feature is specifically designed for gas pump application. Available options include large paper roll holder and bezel paper detector for the entire SK1-200 series.

#### Features:

- High-Speed Printing: 250mm/sec
- Adaptable, Modular Design
- StarPRNT Emulation for Easy Integration
- Available with and without Presenter
- Front Paper Loading

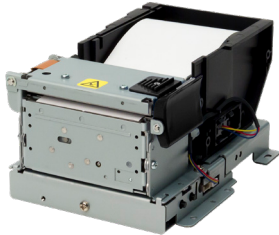
#### Available Options:

- Standard Bezel
- LED Bezel
- Anti-Jam Bezel
- Standard Presenter
- LED Presenter
- Large Paper Roll Holder (Standard Position / Upper Position / Beneath Position)



# SK1-200 Series

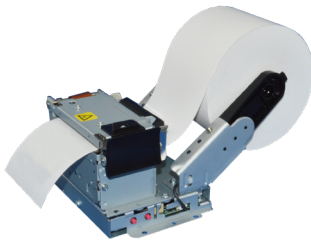
SK1-221SF2-Q-SP



SK1-211SF2-LQP-SP



SK1-211SF2-Q-SP



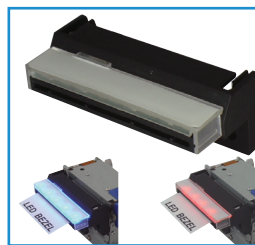
SK1-24SF2Q ST



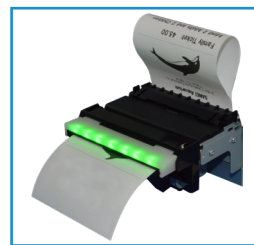
## Specifications SK1-200

<b>Printer Method</b>	Direct Line Thermal
<b>Print Speed</b>	Max 250mm/sec
<b>Paper Width</b>	58mm, 60mm
<b>Print Width</b>	54mm, 56mm
<b>Paper Roll Holder</b>	<b>SK1-211:</b> 120mm <b>SK1-221:</b> 83mm <b>SK1-24:</b> 83mm
<b>Resolution</b>	8 dots/mm (203dpi)
<b>Font</b>	8x16, 12x24 dots
<b>Character Types</b>	PC437 / 850 / 852 / 857 / 858 / 860 / 863 / 865 / 866, WPC 1252
<b>Bar Code</b>	JAN8/13, CODE39, ITF, CODABAR, CODE128, UPC-A/E
<b>2D Bar Code</b>	QR, Maxicode, Micro PDF-417, PDF-417, DataMatrix
<b>Interface</b>	Dual Serial (RS232C) & USB (V2.0 FULL SPEED)
<b>Cutter</b>	Full and Partial Cut (Command Selectable)
<b>Operating Voltage</b>	DC 24V
<b>External Dimensions</b>	<b>SK1-211:</b> 104 x 137 x 79 (w x h x d) mm <b>SK1-221:</b> 104 x 137 x 70 (w x h x d) mm <b>SK1-24:</b> 99 x 118 x 123 (w x h x d) mm
<b>Reliability</b>	<b>Max Cycles Before Failure-</b> 200 Million Pulses <b>Print Head-</b> 150km <b>Auto Cutter-</b> 2 Million Cuts
<b>Safety Standards</b>	CE, FCC, VCCI

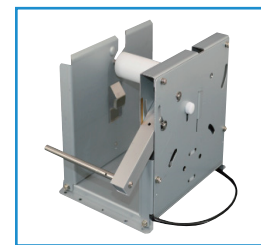
Model	Description	Part Numbers
SK1-211SF2-LQP-SP	SK1, Kiosk 2", Presenter, USB/Serial, Ext PS needed	37963752
SK1-211SF2-Q-SP	SK1, Kiosk 2", USB/Serial, Ext PS needed	37963762
SK1-V211SF2-Q-SP	SK1, Kiosk Vertical 2", USB/Serial, Ext PS needed	37964082
SK1-V211SF2-LQP-SP	SK1, Kiosk Vertical 2", Presenter, USB/Serial, Ext PS needed	37964592
SK1-221SF2-Q-SP	SK1, Kiosk 2", Paper Basket, USB/Serial, Ext PS needed	37963892
SK1-24SF2Q ST	SK1, Kiosk 2", Paper Basket, USB/Serial, Ext PS needed	37964340



Bezel



Presenter



Large Paper Holder