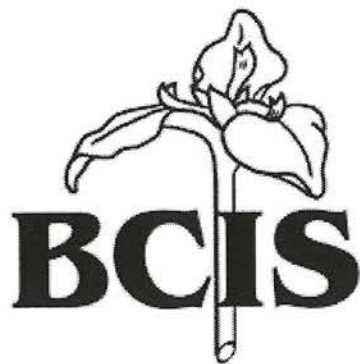


2007



BC Iris Society Newsletter

Issue 2.1

"Iris, the flower for all seasons."

Winter / Spring 2007

President's Message

The first year of the BC Iris Society was a busy one. The goals of the Society are to promote the use of plants in the genus *Iridacea* as a hardy perennial, to learn about irises in general - and to enjoy the friendship of others who also appreciate these wonderful plants. It is safe to say that we have been successful in accomplishing some progress in each of these areas.

The past year started with the first official meeting of BCIS, the establishment of a website, followed by the publication of our newsletter. We organized three interesting and enjoyable garden tours during peak bloom season, and held a silent auction of bearded iris rhizomes to raise funds for the Society.



By early November 2006 our membership reached 100. While we know the success of our society is not about numbers, the positive response indicates how well we are reaching out to the gardening community with our message. We now have enough interested participants so we are better able to meet member needs.

Many people have worked hard to make our founding year a good one. I extend much appreciation to them and to all those who have joined BCIS.

Ted Baker, President BCIS

BCIS Notices: 2007

An Evening With Terry Aitken on Salt Spring Island

This coming March 28, Terry Aitken, immediate past President of the American Iris Society will give a joint presentation to members of BCIS and the Salt Spring Island Garden Club. Terry will give a general talk about irises and the next day will conduct a workshop with BCIS members. The joint presentation will be at Meadon Hall, located in the lower level of the Legion at 120 Blain Road in Ganges. The informal part of the meeting starts at 7 p.m. followed by Garden Club business and the presentation. A bowl featuring irises --by potter and BCIS member Rita Alexandra--will be auctioned at the event with proceeds going to the Garden Club and BCIS. If you cannot attend the event, you can send a bid by letter or e-mail to Ted Baker, 185 Furness Road, Salt Spring Island, BC V8K 1Z7 or tedebaker@shaw.ca.

The workshop on March 29 will take place at the home of Sonja and Ted Baker, 185 Furness Road. This will largely be a question-and-answer session and will start at 10 a.m. with a potluck lunch to follow at noon.

Salt Spring members will gladly billet off-Island members if they would like accommodation. This is a great way to talk about irises and get to know each other better! Contact **Pat Spiers** at 250-537-9452 and she will make the necessary arrangements.

2007 Garden Tours

Three garden tours are planned for this year. Detailed information about the tours will be sent to you in April. Please call the tour coordinator if you have questions or want to help.

The Victoria and area tour will be held May 26. Tour coordinator is **Gordana Lazarevich**, 5007 Echo Drive, Victoria, BC V9E 2H9; 250-479-3382; gordanaal@shaw.ca.

The Okanagan tour will be held June 2. Tour Coordinator is **Penny Santosham**, Site 60, Comp 39, RR#2, Penticton, BC, V2A 6J7; 250-490-4928; penny_santosham@telus.net.

The Vancouver/Fraser Valley Tour will be held June 9, if we can get a tour coordinator. Is there a member in this area who would like to organize this tour? If so, please contact Ted Baker (tedebaker@shaw.ca).

Silent Auction

Our auction was a great success last year and those who participated want us to hold another auction this year. A summary of last year's event follows in this newsletter. We found that those who were directly involved in the auction had a better idea about how to determine bids, so we encourage your participation! We need members to donate plants for this auction but they need to be limited to newer or proven named varieties. All types of irises can be included, with the name, type, and a short description being sent to **Robb Smith**, 405 Walker's Hook Road, Salt Spring Island, BC V8K 1N7 or resmith@saltspring.com. Also, please send a photograph of the plant if you have one. Robb needs this information by March 15 as it will be posted on our website and mailed out to members in early April. Those who donate plants will eventually be required to send their plants to the successful bidder. The buyer will pay the shipping costs. Plants that receive no bids will remain the property of the donor.

Joint Plant Purchase

Members would like to make joint iris purchases for access to more kinds and varieties at reduced costs. It has been decided to make this purchase from **Aitken's Salmon Creek Gardens**, 608 NW 119 St., Vancouver, Washington 98685 since they have a very good selection of irises.

If you wish to participate in this joint purchase either write to Aitken's for a catalogue or go to their website at www.flowerfantasy.net. Their 2007 catalogue should be available in April. You must order by July 1 with payment in US dollars at the time you order. You must also note on your order form that it is a BCIS Joint Plant Purchase. Do not include any funds for the Phytosanitary Certificate or shipping as Ted Baker will pick up the plants the first week in August and mail them to you from Salt Spring.

Memberships

Joyce Prothero (281 Cudmore Heights, Salt Spring Island, BC. V8K 2J7 or jprothero@saltspring.com) is our new membership clerk. If you wish to renew your membership or want to become a member please contact Joyce. Membership fees are \$15 for

a single person or \$16 for a family or organization and are due in May. Multiple year payment is accepted.

Minutes of the Members Annual Meeting

The minutes of BC Iris meeting on Nov. 18, 2006 have been included on the website. If you don't have internet service and would like a copy of the minutes, please request that a copy be mailed to you: Dee Fitton, 131 Beachside Drive, Salt Spring Island, BC, V8K 2L2 or fitton@saltspring.com.

Local Garden Tours and Events

If you would like to hold a local garden tour or other event, please send the information to Ted Baker and we will include it in the member mailing in April. For example, BCIS members on Salt Spring are holding a garden workshop session on May 29th. We have invited the New Members Group and the Iris Interest Group from the local Garden Club. Of course all BCIS members are invited to attend as well.

Also, if you wish to have a speaker or other 'iris' activity in your area, BCIS funds can be used to cover expenses. Just let the Executive know so they can approve the expenditures **before** the event takes place.

BCIS Donation to Government House

During 2006, BCIS donated 66 irises to Government House in Victoria. This included 14 bearded varieties and four Siberian varieties. These irises will be used to enhance their already extensive collection of irises. This year we hope to do something similar for the Tofino Botanical Gardens.

If you know of a botanical or other public garden near you that could benefit from a donation of irises, please check it out. This is an excellent way to promote this wonderful plant.

BCIS Garden Tours 2006

About 80 BCIS members and some friends enjoyed three garden tours this past year during iris bloom time. The tours allowed us to learn more about irises and how to grow them; to get to know other BCIS members; and to enjoy the gardens we visited.

May 17: Royston / Comox

The first tour was on May 17 in the Royston/ Comox area of Vancouver Island. We started at the garden of **Joan Walsh**. This was a garden of many plants we do not often see grown in this area. Joan comes from Manitoba and decided the climate was so good she could try to grow anything and grow they did! She wraps some zone 9 plants but others have done well in her sheltered garden on the beach. We only saw one iris (bearded) growing in Joan's garden but our visit was most useful and interesting.

We then visited the garden of **Derek and Sally Gardener**. They have transformed a large lot into a most inviting space. We entered the back garden through a gate with a raised perennial bed on the left. There was a mix of bearded irises and Siberians scattered throughout the garden. As it was early, only the shorter, bearded types were in bloom but they made a good display. The garden also features a pond with an interesting fountain

made by Derek out of metal taps. We also saw a productive vegetable garden and berry patch as well as some interesting trees. For the past two years Derek and Sally have strung a series of CDs over their berries to eliminate bird predation.



Lunch in Lynn Powell's garden [Lynn is standing]

Lynn Powell then welcomed us to her garden: a long lane opens up into an expansive lawn containing a variety of beds and borders of perennials with irises being the feature plant. The Standard Dwarf Bearded irises were making a wonderful show. Particularly nice were established clumps of HEATHER CARPET, a warm purple with lilac beards; FOREVER BLUE, pale blue violet with darker beards; PIPILONGSTOCKINGS, pale yellow with a maroon fall spot; RUBY ERUPTION, ruby red plicata markings over bright yellow ground; KLINGON PRINCESS, wide, ruffled, and flared yellow with khaki and dusty violet beard; and WAKEUP, which was a very bright yellow. RARE EDITION, a white Intermediate Bearded with dark violet edged petals was also making a nice show. Tables and chairs had been set out in the shade of tall Douglas-firs where we had a short meeting and enjoyed a picnic lunch. As we left, we were fortunate to be able to buy plants from Lynn's small plant nursery.

The next garden we visited was the creation of Shirley Ross, a garden on a city lot transformed into a very pleasant environment. The backyard is a mix of lawn, perennial borders and a vegetable garden. In one corner of the yard, several tall trees, Hostas and other shade plants convey a woody feeling. While there were a few yellow and purple Median bearded irises blooming, the iris 'star' of the garden was a large clump of *Iris cristata* that drew much attention. This very short violet and white crested iris formed a wonderful mat of bloom.

Many of us then went to Kitty Coleman's garden north of Courtney. This is a large private garden open to the public for a modest charge. It is primarily a Rhododendron garden and they were in peak bloom. This woodland garden contains many ponds and water features. We were able to enjoy beautiful vistas of trees, ponds, fountains and Rhododendrons--all providing wonderful colour. A grouping of Lem's Monarch was outstanding, with stunning trusses of red which paled at the throat. Although it was early in the season for an abundance of iris in bloom, everyone who attended enjoyed the day. It was especially good to meet the members from the area and to share experiences about growing irises.

June 3: Salt Spring Island

We visited six Salt Spring Island gardens on June 3. The weather was perfect, as it was on all the tours.



The garden of **May Henderson** took us back in time with spacious vistas of beds of perennial favourites. There were several clumps of Siberians in bloom, adding much interest to the garden experience. We wandered past mixed borders containing native plants. The cedar and driftwood gates and fences were special.

← Barb Archer on the left

We then traveled to the home and garden of **Barb Archer and Rob Oliver**. The first impact of this garden is one of abundance. Barb has used combinations of large and interesting plants to make a very special place. Grasses are used to advantage. Tall bearded irises blooming included **HELLO DARKNESS**, a very dark black purple; and **NIGHT RULER**, also a deep black purple that is very ruffled. There was also a lovely clump of **WHITE MAGNIFICENCE**, a white Siberian. Throughout the garden are benches and other seating areas where we were able to enjoy our lunch. Barb provided drinks and some desserts, and we had a short meeting before traveling to our next garden...



Ray Spiers (left) and Joyce Prothero (second from right)

....where we were fortunate enough to see several clumps of yellow, blue, and reddish-pink Pacific Coast irises in bloom at the garden of **Joyce and John Prothero**. These plants were mostly grown from seed by Joyce and were doing very well in this woodland setting. Joyce has transformed their driveway into a linear garden, the only part of their property receiving enough sun. We also learned about her wonderful collection of heathers. Joyce generously gave Pacific Coast seedlings she had started to visitors who wanted them.



**Ray and Pat Spiers did extensive stonework in their garden.
The walls make a perfect place for BCIS members to enjoy the view.**

Ray and Pat Spier's garden was another wonderful treat. While the five ponds with streams and waterfalls make a major impact in the garden, the plantings are also impressive. Tall bearded irises were scattered throughout, with a nice clump of **CLASSIC LOOK**, a white with a medium violet blue edge on both the standards and falls. There was also a beautiful clump of **SHAKER'S PRAYER**, a Siberian, strategically framed by a pond. Other Siberians were quite at home in this wonderful garden.

We next went to **Sonja and Ted Baker's** garden and were met by a half-acre of tall bearded irises in full bloom along the driveway. There were many more TBs, Medians and Siberians in the garden around the house. Some tall bearded irises in bloom included **HAPPENSTANCE**, a lovely pink; **SECRET SERVICE**, tan standards and near black falls with an orange beard; **SPLASHACATA**, the Dykes Medal winner for 2005 with pale blue standards and pale blue falls heavily peppered with purple; and **DANGEROUS MOOD**, pale blue standards with nearly black falls. Medians included **BORDER GUARD** (Border Bearded), oyster standards and cocoa pink falls; and **SONJA'S SELAH** (BB), warm white with peach pink fall patch. Clumps of Siberians in bloom included **STRAWBERRY FAIR**, very flared, lavender pink with a gold and white signal; **CARELESS SALLY**, rounded, ruffled blend of rose, blue and yellow; and **BLUEBERRY FAIR**, ruffled mid-lavender blue with a white signal. Ted gave a short talk about growing irises.

The last stop was the garden of **Elaine Potter**, whose garden takes one back in time. Everyone felt comfortable to see a pile of recently picked weeds near a path! The garden sits in the middle of the forest and is relaxed in the afternoon sun. Seagull, a very fragrant small flowered white rose from the early 1900s climbed up and over the barn. Beardless irises were mixed with perennials in a variety of beds. A magnificent clump of HOLDEN CLOUGH, a *pseudacorus* cross of yellow with extensive brown veining, held forth near the middle of the garden. Two Siberians were also showing well: PERRY'S BLUE, the first introduced Siberian hybrid was lovely with tall stocks and delicate flowers of pale blue; the other Siberian was a blue species form.

June 10: Chilliwack

The third and final 2006 BCIS Garden Tour was held in the Chilliwack area on June 10. Unfortunately, only a few members were able to attend but everyone who did felt it was very worthwhile. The two members' gardens we visited are "must see" gardens for anyone interested in Siberian irises.

When we arrived at the home of **Henry and Molly Pauls**, there were many other people there on a local garden event known as "The Ramble." Siberians were being featured on this BCIS tour and this garden was filled with an abundance of early and mid-blooming Siberians. The term 'garden rooms' took on a new meaning as we moved from one forested clearing to another to view vistas of these wonderful plants in bloom. Early varieties--including PLEASURES OF MAY, pale lavender and pink; DANCING NANOU, blue violet self with darker violet edge; PINK HAZE, pink lavender; RANMAN, six fall pink; and TEMPER TANTRUM, rosy violet with blue at the fall center; and dozens of other varieties--were at their peak. Later blooming varieties including DREAMING YELLOW, very pale yellow; and DIRIGO BLACK VELVET, very dark blue purple with white and gold signals were showing hundreds of buds on strong plants. Henry was selling potted irises, trees, shrubs, and perennials at very reasonable prices.

Next stop was **Minter Gardens** and the plantings were in top condition. Among the borders were Tall Bearded and Siberian irises, mostly past their prime but still adding colour. There was a very nice clump of *Iris versicolor* beside one of the paths and various varieties of *Iris pseudacorus* were flowering well in some of the pondscapes.

Cross Wind Garden, operated by **Ali van Klie and Lynn Griffith**, was the final stop on this tour. This two-acre garden is well laid out and neat as a pin, showing the plants for sale to good advantage. Again, Siberians were the feature plant of this garden. Varieties for sale were planted in rows at the back of the property, with some newer varieties and other types of iris grown near the front. This is an early garden situated on the Fraser River flood plain. Here we saw a wonderful show of later blooming Siberian varieties including KING OF KINGS, a wonderful white; and PRARIE WARBLER, a pale greenish yellow with brown spots. ON AND ON, which will be violet with a white signal was putting up new stocks and two spureas were blooming. Ali and Lynn also had plants for sale at very reasonable prices so we all left with new varieties to add to our collections.

Members of BCIS and friends who attended the 2006 Garden Tours would like to extend our sincere appreciation to all those who opened their gardens for us to visit. We look forward to the 2007 tours.

What You Always Wanted to Know About the Silent Auction

“Fun”

“A learning experience!”

“We definitely need to do it again!”

Comments from those who participated in the BCIS Silent Auction this year encourage us to go forward. The information presented here will tell you how the auction works, show how the process is fair and describe how to bid if you want to get involved in future auctions.

The auction helps raise money for BCIS to keep membership fees low and enable us to have speakers come in to teach and entertain. It is also an opportunity for members to acquire newer or unusual varieties at a reasonable price. This year, **Ted Baker** paid for the phytosanitary certificates (\$25) and transported plants from the U.S. to save shipping costs. **Terry and Barbara Aitken** of Aitken's Salmon Creek Garden generously arranged to donate all of their 2006 bearded iris introductions to BCIS. Many thanks to Terry, Barbara, and **Marky Smith, Bruce Filardi, Anton Mego, Ken Fisher, Jean Witt, and Bennett Jones** who introduce their irises through Aitken's Salmon Creek Garden and donated their plants to BCIS.

No one had any idea what the plants would sell for, so everyone developed unique bidding strategies. Bids were sent in by e-mail or snail mail. Some bids were sent in sealed envelopes so we did not know who bid what until **Pat Parkes** and Ted Baker opened the bids on July 31. No bids were accepted by phone. We are listing the results below to give you a better idea what to expect if you want to bid in future auctions. The successful bids vary greatly as some varieties received only one bid while the more popular plants had as many as four bids. All plants were sold. In the future, if there is a tie bid the plant will go to the bid received first.

Listed are the variety name, type (TB, BB, MTB, IB, STB, MDB), the winning bid, and the catalogue price in U.S. dollars in brackets.

Variety	Type	Winning Bid (CDN)	Catalogue Price (USD)
Bon Appetit	TB	25.00	50.00
Frosty Moonscape	TB	50.00	40.00
Pewter And Gold	TB	50.00	45.00
Slovak Sapphire	TB	5.00	45.00
Some Enchanted Evening	TB	10.00	45.00
Tropical Evening	TB	15.00	45.00
Dark Top Strutter	BB	10.00	25.00
Love Power	BB	20.00	25.00
Look Here	MTB	18.00	20.00
Red Rock Princess	MTB	25.00	20.00
Stitched In Blue	MTB	10.00	20.00
Aeronaut	IB	15.00	20.00
Cayenne	IB	15.00	20.00
Fresh Insight	IB	10.00	20.00
Absolute Joy	SDB	16.00	15.00
Artful Tradition	SDB	10.00	15.00
Mosaic	SDB	11.00	15.00
Pinch Me	SDB	5.00	10.00
Pink Latte	SDB	5.00	15.00
Shallows	SDB	13.00	15.00
Applet	MDB	5.00	15.00
Stripling	MDB	5.00	15.00



Frosty Rim [Siberian] at Ted Baker's garden on SSI.



Pond with Pseudacorus



Blueberry Fair [Siberian] in Ted Baker's garden



Siberian irises in May Henderson's garden



**Sea Power [2006 Dykes Medal winner]
in the garden of Keith Keppel in Oregon**



Pacific Coast seedling in Joyce Prothero's garden



**Splashacata [Dykes Memorial Medal winner for 2005]
in Ted Baker's garden**



Ted Baker's Garden on Salt Spring Island



Another view of Ted Baker's collection of Bearded irises



Butter and Sugar Siberian iris



Shaker's Prayer [Siberian iris] in the garden of Ray and Pat Spiers



Strawberry Fair [The Morgan-Wood Medal winner for 2001]



Pseudacorus "Ecrú"



Pseudacorus "Roy Davidson"



Pseudacorus "Alba"



Joyce Prothero with large heather in Joan Walshe's garden



Ali van Klei (right) showing her Siberian irises to BCIS members



Moraea Alticola 01 News



Moraea Brevistyla News



Moraea Spathulata News.



Ketty Hughs, Barb Archer and guest in Sally and Derek Gardener's garden



Henry Pauls directing guests to his fields of Siberian irises

Some irises went far below their catalogue price while others went for slightly more. It appears that if you want a particular plant, you should be prepared to pay for it as they can go for a high price. On the other hand, you could have bid \$7 on all the plants and picked up five excellent irises at far below their catalogue value.

Remember, the sale is for a good cause! Total revenue was \$348 and those who took part had fun and want another auction next year.

To make this year's auction a success, check your iris patch and give Robb Smith a call!

Managing My Iris Patch

Ted Baker

There are many ways to grow good irises depending on your garden conditions. This would include soil type and condition, site characteristics--including sun exposure and slope--and other differences experienced between and within gardens. Also, much of what I do is specific for coastal areas and needs to be adjusted to accommodate conditions in other locations.

Our garden on Salt Spring Island has a range of site conditions that require some consideration when growing irises and other plants. For example, we grow irises on an east-facing slope that welcomes the early morning sun, so the plants dry quickly and the amount of fungus is reduced in these areas. I have to be more careful about the varieties I plant and keep the beds clean in those areas where the sun, blocked by trees, arrives later in the day.

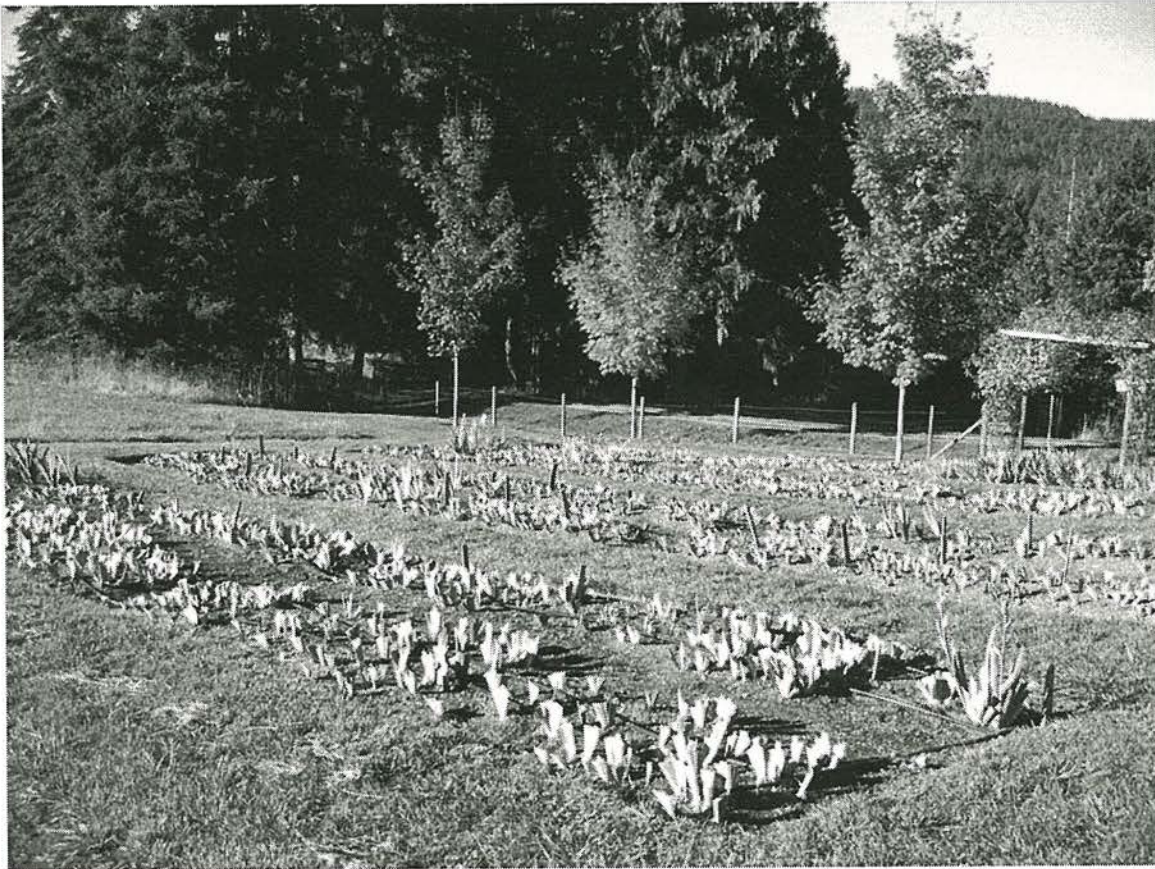
In early spring, I start by making sure the iris beds are free of weeds and other debris. This reduces the chance of disease and damage by slugs, and ensures that soil nutrients feed the iris and not the weeds. Keep an eye out for any slug damage throughout the year but especially as the plants start to grow. I started using the new Safer's Slug Bait two years ago since it is not toxic to pets and birds. Very little is required and, when scattered sparingly, it does not go moldy. It lasts at least two weeks even in rainy weather. This past year we had very few slugs, indicating the slug population was significantly reduced.

Our soil pH is less than 6.00--on the acidic side for many plants including bearded irises--but I do not lime and they grow fine. As soon as the plants start to show about 3-4 inches of growth, I fertilize with Evergro 10-15-19 Vegetable & Tomato Food. Conventional advice states that we should never use any fertilizer with a nitrogen number higher than 5 for irises; however, I have found that this is not enough nitrogen to produce the best results for the amount of rainfall we receive on the coast. Some forms of nitrogen are mobile and leach out of the soil quite quickly; after our winter rains, some nitrogen is welcomed by the plants.

Always buy fertilizers which contain micronutrients whenever possible. The Evergro fertilizer I use contains micronutrients including boron and sulphur. When fertilizing, one is usually advised to be careful not to spread any on the rhizomes as this can burn them and cause rot. This is possible if you only have a few plants; however, with the number of plants I grow, I just scatter it throughout the beds and only a very few fans rot. I fertilize when the buds can be felt coming up in the fan of leaves or when the bud shows just above the fan. If it is done later, it is too late to help during the time when the plant needs most nutrients to push up the stalk and produce maximum sized blooms. After bloom is finished, I fertilize again if plants show the need. I look for healthy, vigorous growth with good colour, but not so lush and soft that the plants are subject to disease. This is a subjective assessment, but back on the farm my Dad always said, "It was the eye of the farmer that fattened the cattle"-- you couldn't just use a formula to make it happen.

When fertilizing, it is important to watch your plants to make sure they are not over-fertilized. If mine are doing well, I generally reduce the amount of fertilizer I give them each time and as a result the iris in the sandy soils get more fertilizer than the others. I also check for leaf spot and, if it is a problem, I spray with a fungicide (you can use the same fungicide as used for roses).

As the weather becomes warmer and the soil moisture is depleted, I start to water all my gardens at a rate of one inch per week. (Just use a few tin cans spread throughout the area being watered and then stop when you have enough water. I have calibrated my sprinklers by determining how long it takes for them to put out one inch and subsequently just water for that length of time.) This is done once each week to ensure the water soaks deeply into the root zone of the plants.



Ted Baker's Irises Cut Back for Winter

As the bearded iris begin to bloom, I deadhead, especially in wet weather to reduce the chance of the stalks falling down in a wind. This also improves the overall appearance of irises. As a stalk finishes blooming, break or cut it off at ground level where the stalk connects with the rhizome. The old rhizome will not bloom again but will send up new rhizomes at the back and sides for future bloom. Cut out any diseased or dying leaves and, if possible, continue to water throughout the summer. Watering helps produce better bloom the following year. If your soil is poor and you cannot water, don't worry--your plants should still bloom but will be shorter.

Moving irises is not my favourite thing to do, so after they bloom I check the clumps to see if they are too crowded. If they are, I use a dandelion tool to take out the old rhizomes and any others that are too crowded to give the remaining rhizomes room to grow. Also, this is the time I move some plants to new beds and rejuvenate old beds. To do this, I dig to a depth of

about 18 inches (less for Median irises), sifting out the rocks as necessary, and incorporate a generous amount of compost in the top foot of soil. I plant the rhizomes of the same variety about 12 inches apart and different varieties about 18 inches apart. The Siberians are then mulched with about three inches of compost to retain water and prevent weed growth. Some compost can be added as mulch to bearded iris plantings but only between the clumps and not touching the rhizomes, since the mulch can cause rot. I never put woodchips on the bed but use non-cedar chips on the paths between the beds, as I have seen evidence of slowed growth--possibly due to the build up of toxic substances or fungal growth from the wood.

In the fall, I cut back the fans to about 6 to 8 inches and do the final weeding. The bearded clippings are piled for future burning to prevent the spread of fungal diseases while the Siberians and other beardless clippings are composted. It is best to cut the plants back in late October or early November when they have stopped growing. If this is done too early, the rhizomes will not grow to full size and next year's bloom could be affected.

In the winter months, I check out the notes and photos I have collected over the past year. Then it is time to go over my wish list and to enjoy the iris catalogues as they start to arrive. In the spring, the cycle repeats for yet another year.

If you have any questions about what I have written, please contact me at [250] 653 4430 or tedebaker@shaw.ca.

Okanagan Update

Penny Santosham

It's September 15th and rain has finally arrived, so I've hung my pitchfork in the shed and picked up a pen to write this first OK report for the next BCIS newsletter.

My Windy Lakeside Garden - Zone 3

Yesterday, a package of 13 reblooming irises arrived from the Maritimes and were quickly tucked into bed and mulched with pine needles. I've found that labeling with a grease pen on old venetian blinds lasts well in our climate. Meanwhile, two mystery irises from a friend have headed up and will hopefully get a chance to flower. It's 75 F now but we could get a freeze anytime. I had 20 TB irises in June and now I have 200, so over the summer every garden bed had to be reorganized with irises as the star performers. Thanks to advice from Anna Smith in Cawston, I even made two successful TB crosses. The 89 seeds are now in the fridge for an artificial 60-day winter. With a little luck, I'll have some interesting babies next year. Do you think Ted is right when he says I've caught the IRIS BUG?

Okanagan Group

At the beginning of 2006, I knew no Irisarians and now have 14 in our Okanagan area. It was a great help when Jurgen Hansen, the local garden columnist, wrote two articles about irises and included contact info for me as a BCIS rep. Thanks to a gal at Art Knapp's Garden Center and my posters, the word got out. I discovered Anme Sing in Keremeos who has a gorgeous garden with 450 TBs. She and I collaborated on a joint fundraiser and made \$100 for the BCIS. Harold Baumbrough in Naramata has about 250 TB irises in his unique hillside garden overlooking Okanagan Lake. All summer he has generously delivered bags of rhizomes for our group to share. Warren Carrington-Hill in Princeton is a gold mine of information and encouragement. For example, I mentioned to him that I would like to find out about Dykes Medal winners and a few days later he brought me a copy of his 60-page colour illustrated DM binder. Warren also donated irises to OK members as well as raising \$78.00 for BCIS through the

website marketplace. It's been a very rewarding year--gaining wonderful new friends as well as new irises.

2007 OK Plans

This year I've focused on members within 150 km (Summerland to Princeton), manageable as a Southern satellite. In the next few months, I will *re-contact* garden clubs and newspaper columnists in Vernon and Kelowna and try to find a keen Northern coordinator. Jurgen is going to include BCIS information in articles he writes for two publications in those areas. Most of our current OK members took photos of their irises this year in order to name and label them in readiness for a trade & share get-together next summer. We'll also meet for garden tours: I have at least three in mind for the BCIS Okanagan Garden Tour on June 2. The lunch stop will be at a beautiful new 9.5-acre perennial garden & nursery in Kaleden, 15 minutes south of Penticton. I hope many BCIS members will join us.

Last Words

Did you know about the new, free, Canada Post program for small businesses? (Warren told me about it.) I've been sending heritage rhizomes here and there and signed up as "Pickadilly Iris"! More about the program, alfalfa tea, and an update on my baby hybrids in the next newsletter.

Moraeas

Robb Smith

Moraea is a large genus within the iris family from sub-Saharan Africa, with 119 species recognized. If you were to see a flower of a *Moraea* in isolation, you would probably not be able to distinguish it from an iris--they have the same three large outer tepals and smaller inner tepals, except that the tepals are free to the base in *Moraea* whereas they are united into a tube in irises.

Over a dozen *Moraeas* can be grown on the Pacific Coast with little effort, but they have to be selected with attention to their climatic needs. First, we can exclude all the species from a true Mediterranean climate found in the southwestern Cape. Next, we can exclude all the tropical species; and those from coastal and lowland areas of South Africa where there are no frosts. Restricting conditions a little further, we look only to the middle altitudes of Natal and Lesotho--above 1500 meters or so, where winter temperatures of -5C or lower are experienced and winter hardiness isn't an issue. Additionally for us, ours is a dry summer/wet winter environment, so lastly we look for species that grow beside streams or in wet grasslands. These are the only *Moraeas* that can tolerate our winter conditions. Here are some highlights of the ones that meet our requirements:

Moraea elliotii: Small blue-violet flowers and solitary foliage leaf near base. Plant height up to 50 cm.

Moraea natalensis: Small blue-purple flowers and solitary leaf near top of the flower stem. Plant height up to 45 cm.

Moraea inclinata: Medium blue-purple flowers and single leaf well above ground on a stem which leans strongly towards the ground. Plant height up to 90 cm.

Moraea stricta: Small blue-violet flowers preceding a single leaf. Plants less than 25 cm tall when in flower.

Moraea alpina: Flowers similar to *M. stricta*, but even smaller. Late flowering. Very small plants (under 12 cm)

Moraea trifida: Small cream to dull yellow flower with unusual trilobed inner tepals. Single foliage leaf inserted above the ground. Plant height up to 55 cm.

Moraea brevistyla: Small white flowers and solitary foliage leaf just above ground level. Plant height 35 cm.

Moraea albicuspa: Large cream to white flowers in which the inner tepals are reduced to needle-like cusps. Single long thin leaf. Plant height up to 60 cm.

Moraea dracomontana: Blue-purple flowers with short slender inner tepals. Single leaf. Plants small (to 30 cm.)

Moraea modesta: Small, inconspicuous plant with small inconspicuous pale blue flowers.

Moraea carnea: Creamy yellow to pale pink flowers and a long solitary foliage leaf. Plant height to 50 cm.

Moraea ardesiaca: Large slate-blue to mauve flowers. Fairly large plants, to 70 cm.

Moraea graminicola: Smallish flowers pale yellow to gray. Early blooming, from relatively low altitudes. Plant height to 60 cm.

Moraea spathulata: Flowers bright yellow with deep yellow nectar guides. Large plants, to 1 m. tall.

Moraea alticola: Flowers pale yellow with deep yellow nectar guides. Large plants, to 1 m. tall.

Moraea robusta: Large pale yellow flowers on relatively small plants, to 40 cm. tall.

Moraea huttonii: Scented bright yellow flowers with deeper yellow nectar guides and a brown to purple blotch on each style crest. Semi-aquatic habitat. Plant height to 1 m.

I have a few of these in my garden, growing in good soil and given about an inch of water each week during July and August. Flowering takes place between mid-June and the end of July. No fertilizers are used. I don't know that the supplementary watering is absolutely necessary, but I expect that flowering might suffer during a long dry spell.

Complete details on all the species of *Moraea* can be found in the monograph *The Moraeas of Southern Africa* by Peter Goldblatt, 1986.

You probably won't find any *Moraeas* for sale at your local nursery. If you want to try growing them, you will have to grow them from seed. By far the largest selection is available at Silverhill Seeds in Capetown. They have a web site with on-line Ordering at www.silverhillseeds.co.za Seeds should be started in the spring, and are not difficult to germinate. I have always kept mine in a frost-free greenhouse over the first winter but with no watering. They go dormant at some point over the winter, and are transferred to a garden situation in the spring. Flowering usually only begins in the third year.

[See colour images of selected *Moraeas* in the insert. Photo credits: Robb Smith]

Irises of Series *Laevigatae*: The Water Irises

Pat Parkes

When we think of ponds and water gardens, what usually comes to mind is clear, reflective water, with a surface patterned by water lily leaves and their flowers, and some mixed vegetation at the margins.

However, water lilies are not the only queens of the pond and if water-loving iris species are thickly planted along the banks and in the water at pond's edge, they can rival any flower display put on by the water lilies.

After flowering, the leaves of water-loving irises become part of the verdant backdrop against which the water lilies bloom. With many different leaf shapes, heights and colours, and great variety in flower form and hue, irises add textural and chromatic richness to the pond surrounds. Their thick leafy fans also provide cover at the water's edge for small birds to drink and bathe, and provide cool moist haunts for frogs and salamanders. The leaves also become a place for emergent nymphs to leave their aquatic environment, shed their skins and become shining new dragonflies. In the autumn, the leaves take on soft golden colours and look beautiful rimed with frost or, in the winter, dusted or mounded with snow.

The most common water iris, the one most people recognize, is *Iris pseudacorus*. Introduced from Europe, it has naturalized and now grows throughout North America. It belongs to the series *laevigatae* along with *Irises laevigata*, *versicolor*, *virginica* and their hybrids. They all grow well in moist, fertile, acidic soil, in marshy areas and with water over their crowns. If potted and grown in ornamental ponds, they should be fertilized in the early spring when growth commences, just before blooming, and again after the bloom has finished. Commercial water lily tablets (Pondtabs), Nutracote, or even tomato stakes can be used as fertilizer.

Iris ensata also belongs to this series, but has different soil and water requirements. Soil and water must be acidic (pH 5-6.5) and the plants must not be allowed to dry out. However, unlike the other members of this series, they will not tolerate standing water when winter dormant. They are best planted beside streams or ponds with their crowns above the water table. For ornamental ponds they may be potted and placed in water after growth commences in the spring, but should be removed from the water in the fall, after growth slows. The whole pot can be removed to a cool greenhouse or buried in the ground until the next spring.

All of these irises are hardy to zone 3, but will need mulching and snow covering in colder areas. Care should be taken when introducing them into ponds that are connected to other watercourses as all have seeds that spread by floatation. Removal of spent seed capsules prevents them from seeding into garden areas or into other pots or bog areas in ornamental ponds.

Some of the *Iris pseudacorus* species and hybrids that do well naturalized or in ornamental ponds are:

I. pseudacorus: a tall (70-100cm), robust plant with deep yellow flowers and brown veining on the falls.

I. p. variegata: has golden-yellow variegated leaves in early spring, which later turn green. It is striking when planted near *Lysichitum americanum* (Skunk Cabbage) and *Caltha palustris* (Marsh Marigold).

I. p. alba is the white-flowered form of the species.

I. p. flore plena is a double form. A new hybrid, *Sun Cascade*, produces more flowers on a stronger plant.

I. p. Sulphur Queen, *Linda West* and *Turnipseed* are all variations on pale yellow flowers.

I. p. X chrysogaphes: Holden Clough is an unusual hybrid with such heavy brown veining that the flowers appear brown.

I. p. Roy Davidson is a *Holden Clough* seedling: Deep yellow with a heavily-veined signal, it is well-branched and blooms over a long period. It produces almost no seeds and so is excellent for naturalizing in areas where limited spread is desired.

Iris versicolor is native to the northeastern U. S. and Canada, spreading as far west as Winnipeg. It is a shorter plant (60 cm average) with red-violet to blue-violet flowers appearing in clusters of 2-4. Both species and hybrids are excellent for naturalizing and for the ornamental pond. Some good hybrids include:

I. versicolor Rosea, a rich, rose pink.

I. v. Between the Lines has a white flower with blue-violet veining and violet mid-ribs.

I. v. Kermesina is reddish purple.

I. v. Claret Cup is a deep wine-red with white veining.

I. v. Wild Hearts is a white-veined pink.

Iris virginica is found along the U. S. Atlantic coast from Virginia south to Florida, Georgia, Carolina and Louisiana. *Iris virginica* variant *shreveii* grows northward to the Great Lakes area and is the hardier species. It has purple-blue flowers and lush green foliage (to 80 cm) with a purple tinge at the base. Some good hybrids are:

Gerald Darby (*I. virginica* X *I. versicolor*): dark violet flowers with striking purple-black flower stalks.

Mountain Brook (another *virginica* X *versicolor*): deep blue flowers, purple stems, and very vigorous growth.

Iris laevigata is found wild in eastern Siberia, China, Japan and Korea. It needs standing water or very wet conditions and is intolerant of root disturbances. Transplant only in early spring or late fall, preferably in small clumps rather than as individual fan divisions. *Iris laevigata* produces some of the bluest flowers of this series. Some of the more readily available forms are:

I. laevigata variegata, with white and green variegated leaves and deep blue flowers.

I. l. alba is the white form of the species.

I. l. Colchesterensis is a white double with inky blue spots.

The last iris of this series is *Iris ensata* or Japanese iris, which I shall only touch on briefly because, as already mentioned, the growing conditions are distinct from the other four species and because they are popular, with many available hybrids that would require pages to

describe. For naturalizing, I would recommend any of the species or smaller three-fall hybrids such as *Rose Queen*, with deep pink flowers, or *Virginia B*, with blue-violet falls and darker veining.

Not all species and varieties mentioned above will be readily available in your local nurseries that carry water plants, but they can be sourced on the internet, by checking the advertising sections of garden magazines, and by joining iris societies that offer seed for sale, such as BIS (British Iris Society) or SIGNA (Species Iris Group of North America).

See colour images of Pseudacorus irises in the insert. Photo credits: Pat Parkes.

Contact Information: BC Iris Society

President: **Ted Baker**
185 Furness Road,
Salt Spring Island, BC
V8K 1Z7
250-653-4430
tedebaker@canada.com

Memberships: **Joyce Prothero**
281 Cudmore Heights,
Salt Spring Island, BC. V8K 2J7
jprothero@saltspring.com

Website: **Harry Hill**
www.bc-iris.org
harryh@dccnet.com

Newsletter: **Marshall Soules**
soules@mala.bc.ca

BC Iris Logo / Art: **Pat Parkes**

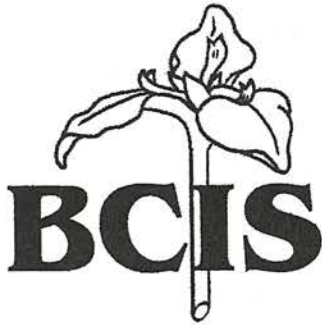


All rights remain with the authors.
Fair Dealing Applies
© 2007

BC Iris Society
www.bc-iris.org/

Aut 2007

R
Joyce Prothero
281 Cudmore Heights
Salt Spring Island BC V8K 2J7



BC Iris Society Bulletin

Iris, the flower for all seasons

Vol 1 No 3

BCIS Bulletins are sent out each Spring and Fall to members to keep them informed about activities and events they might be interested in participating in.

BCIS Garden Tour to Oregon. It has been proposed that we explore the possibility of organizing a bus tour for members to see some of the major iris gardens in Oregon next Spring. The tour would take place May 19th to 22nd. While details would have to be worked out a bus would leave Vancouver the morning of the 19th and pick up members at Tsawwassen on the way south. We would tentatively visit Aitken's Salmon Creek Gardens that afternoon and then proceed to where we are staying that night. Aitkens have a very good variety of many types of iris for us to enjoy. For the next two days we would visit Keith Keppel's, Mid-America, Scheriners, and Adelman Peony Gardens. Keith is a very successful hybridiser of bearded irises and Mid-American and Scheriners both hybridise but have very large, beautiful display gardens. At Mid-America we will also enjoy the Seabright Hosta Gardens which have the largest collection of hosta varieties in Oregon. On the 22nd we will visit the iris garden of Chad Harris and arrive back in BC that afternoon or evening. The owners of these gardens have been contacted and look forward to our visit. The estimated cost would be less than \$500.00 [\$125.00 for bus from Vancouver; \$120.00 for food; and \$240.00 for lodging]. We will try to reduce the costs where possible.

To see whether there is enough interest we need to know how many members seriously think they will attend. This is not a commitment but we need to know this information to proceed. Please let Ted Baker know by January 1st, 2008 if it is highly likely that you would go on this trip. We will be arranging the number of buses depending on the response received. The cost will include bus, accommodation and meals. Now is the time to start saving your money and arranging your holidays! You can contact Ted at 250 653 4430, or tedebaker@shaw.ca or at 185 Furness Road, Salt Spring Island, BC V8K 1Z7.

Local Garden Tours and Events. Now is the time to think about organizing a Garden Tour or other BCIS event for your area! You could get a couple of members together and set up a garden tour featuring irises. Those who have done this the past couple of years have had fun, met new iris people and learned more about growing irises. Also, have you thought about bringing in someone to speak or hold a workshop about growing irises? This is a good way to learn more and to get to know others interested in growing

irises. Your local Garden Club might want to get together with you in sponsoring someone to speak at a joint event. If it is a BCIS sponsored event funds are available for expenses but you need to let someone on the executive know what you are planning.

Painting of irises. Barry Rafuse, a BCIS member from Vernon, generously offered to paint a picture of irises as a fund raiser for BCIS. We plan to sell the painting by 'open auction'. This means you can call Ketty Hughes, who is in charge of the auction, and she will tell you what the highest bid is at that time. The highest bid and a copy of the painting will also be posted on our website at <bc-iris.org>. A picture will also be printed in the January 2008 Newsletter. Bids on the painting will be accepted by letter or e-mail from October until March 31st 2008. Ketty can be contacted at 250 537 0843, or ketty@snark.org or by writing her at 126 Fruitvale Road, Salt Spring Island, BC, V8K 2M1.

Painting details:

1. Original painting.
2. Painting will be framed to 'art gallery standards' with metal frame and acid free mat under glass.
3. The painting is not a copy.
4. Painting is on acid free watercolour paper and is 22 by 30 inches in size. The frame size is 28 by 36 inches.
5. The medium used was acrylic paint and oil pastel [mixed media].
6. This type of painting would sell for \$700.00 to \$800.00 in the galleries which represent Barry's work.

About Barry Rafuse Barry uses mixed media and his style can be described as loose and aggressive, and he has a strong bias to abstraction. Use of brush strokes, pastel markings and texturing produce motion in his work. Barry is largely self taught but has taken many courses from leading Canadian artists and at Emily Carr College. He is currently represented by six galleries in Vancouver, Prince George and the Okanagan. Barry is a member of the Federation of Canadian Artists and for over two decades has competed and exhibited in juried shows in BC. He was recently requested to complete a 10' by 10' piece for the new Vernon Centre for the Performing Arts .

BCIS Irises for sale. Paul Black and Thomas Johnson of Mid-America Gardens have generously donated 15 of their newer bearded iris introductions as a fund raiser for BCIS. Also, the Yakima Valley Iris Society hosted the Region 13 Convention last May and distributed surplus guest irises to all clubs in Region 13. While we are not part of Region 13 we are listed as an affiliate so they included us and we received 117 bearded irises. A listing of these plants is included on a separate sheet with this bulletin. As most of these plants are recent introductions they do not yet qualify for American Iris Society awards. However, some have already won Honourable Mentions [HM] and other awards as noted. Also you can see pictures of most of the irises on line.

The prices for these irises are very reasonable and in some cases less than half the catalogue price. You can order plants starting with the receipt of this Bulletin and they

will be ready for pickup or mail out next July. This sale is limited to BCIS members. Robb Smith is in charge of the sale and can be contacted at 250 537 9824 or resmith@saltspring.com or by writing Robb at 405 Walker's Hook Road, Salt Spring Island, BC. V8K 1N7.

Membership dues Last May was the time to renew your membership in BCIS. If you have not renewed a red dot has been placed near your address on this Bulletin. Dues are \$15.00 for individuals and \$16.00 for families or organizations. Please send your dues to Joyce Prothero, 281 Cudmore Heights, Salt Spring Island, BC, V8K 2J7. If you have any question you can contact Joyce at 250 537 9215 or at [<jprothero@saltspring.com](mailto:jprothero@saltspring.com).

Your membership and the other contributions you make enable BCIS to exist and function effectively. Your participation in BCIS is very much appreciated. If there are changes or additions you would like to see BCIS make please get in touch with any member of the executive.

BCIS Executive

Ted Baker, President, 250 653 4430, tedebaker@shaw.ca
Dee Fitton, Secretary, 250 537 4958, fitton@saltspring.com
Barb Aust, Treasurer, 250 537 5828, aust@shaw.ca
Joyce Prothero, Membership Clerk, 250 537 9215, jprothero@saltspring.com
Harry Hill, Webmaster, 604 885 9769, harryh@dccnet.com
Marshall Soules, Media and Newsletter, 250 245 9904, soules@mala.bc.ca
Penny Santosham, Interior Liason, 250 490 4928, penny_santosham@telus.net
Pat Parkes, Director, 250 653 4917
Pat Page, Director, 250 5375243, patssi@telus.net
Ray Spiers, Director, 250537 9452

BCIS 2007/2008 Iris Sale [for members only]

Please note prices do not include shipping which is the responsibility of the purchaser.

Yakima Valley irises:

Tall Bearded,	2007 introductions	\$10.00
	2006 introductions	\$8.00
	2005 introductions	\$7.00
	2004 and older	\$6.00
Intermediate and Border Bearded	2007 introductions	\$7.00
	2006 introductions	\$6.00
	2005 and older	\$5.00
Standard dwarf	2007 introductions	\$6.00
	2006 introductions	\$5.00
	2005 and older	\$4.00

Mid-America irises:

Tall bearded,	2007 introductions	\$15.00
	2005 introduction	\$8.00
Border bearded	2001 introduction	\$6.00
Standard Dwarf	2007 introductions	\$6.00
	2006 introductions	\$5.00

Yakima Valley Iris Society donations

Tall Bearded

Beyond Paradise [Cadd 04] S blue pink, F blue pink lighter in center, lavender beards

Black Mercury [Cadd 03] Deep violet black with white shoulder markings. Yellow beards. Reblooms.

Blinding Light [Ernst 05] S bright white with gilt edge. F brilliant yellow blended white at center.

Brides Blush [M Sutton 04] S white, F pale cream, shoulders apricot orange. Ruffled.

Casual Elegance [Aitken 05] S light blue. F bronze with chocolate beard. Reblooms.

Clouds And Sky [Ernst 05] Bright white with wide blue fall wash.

Course Of Study [Ernst 04] S creamy buff. F soft violet lavender with creamy buff accents. 9 buds. Ruffled.

Crown Connection [Cadd] S smokey peach. F deep violet and lavender beards.

Deliciously Different [Aitken 04] S soft orange, cream F banded orange.

Desert Mesa [Richardson 06] Very ruffled bright medium blue.

Dusky He-man [Richardson 05] Large medium blue with darker beard.

Executive Sweetie [Ernst 05] Ruffled, bright purple blended white around tangerine beards.

Fairy's Prom Dress [Cadd 05] Light lavender with yellow wash.

Fay's Oscar [Beeman 04] S blue orchid lavender. F violet with lighter center. Lavender blue beards.

Honeycomb [Laurer 06] Ruffled and laced. S light yellow. F honey yellow with white centers. Beards red tipped yellow.

It's A Pleasure [Black 05] Classically formed heavily ruffled mid orchid with paler F centers

Juke Box Hero [Laurer 03] Mid blue bitone with pretty yellow hafts and beards

Life Story [Hager 04] Ruffled, large clean medium blue and whitish blue beards, 10 buds

Love Is All Around [Aitken 05] Soft Lilac S and edge on pansy purple F. Some rebloom.

Lunar Shadow [Cadd 05] Deep reddish purple with metallic blue purple fall center. Deep blue beards.

One Small Step [Ernst 05] Yellow streaked maroon, red and tan.

Peekaboo Zebu [Kesperek 05] Smoky red-purple streaked with silver white.

Polish Princess [Cadd 00] S soft yellow. F lavender peach blend. Yellow beards. Heavily ruffled.

Purple People Eater [Cadd 03] Red-purple to bronze blend; purple beards; bronze horns.
Quantum Leap [G Sutton 04] S plum underlaid white. F white edged plum. Beards plum and white with horns and flounces.
Ritzzy [Hager 04] Golden yellow with lighter area on falls. Ruffled and laced.
Say Goodbye [Hager 04] Very ruffled medium blue violet with red/orange beards.
Sea Of Love [Laurer 05] Ruffled violet blue with mid blue beards.
Shades Of Pale [Ernst 05] Silvery, blue white. Heavily ruffled with 11 buds.
Sleeper [Ernst 04] S violet purple. F lighter violet.
Square Dance Skirt [Cadd 02] S light blue lavender. F velvety violet lavender.
Stardust Dragon [Cadd 03] S cool yellowish beige. F chocolate brown washed falls. Beards yellow with lavender and horned.
Tamara Kay [L Johnson 04] S rose mauve edged cream tan. F violet lavender edged rose pink.
Tomcat [Laurer 06] S white blushed rose; rose violet F w/ cream starburst and edge.
Waimea Canyon Sunset [L Johnson 05] S yellow. F smoky red violet rimmed old gold. Ruffled.

Intermediate Bearded

Banshee [M Smith 05] S red black. F velvety black with red beards.
Caligrapher [M Smith 07] S smoked red violet, white centers. F chartreuse with solid burgundy border. Orange beards.
Cayenne [M Smith 06] S dark red. F red black with purple beards.
Commotion [Craig 05] White with wide diffused violet band on falls. White cream beards.
Delirium [M Smith 01] Smoked gold with maroon overlay on falls. Red beards.
Paisley [M Smith 05] S tan. F mustard yellow washed mulberry and white center with red beards.

Border Bearded

Anaconda Love [Kesperek 99] S pink. F red violet streaked pink and silver.
Fascinating [Craig 05] Rose tones with red veining and bronze beards.
Moontime [Craig 05] Very heavily ruffled cream with yellow shoulders.
Pastel Geisha [Cadd 04] S light pink and old gold. F white with raspberry edge.
Ramblin' Man [Laurer] Light blue with dark blue beards.

Standard Dwarf Bearded

Bright Star Child [Coleman 05] pretty dark royal blue with darker thumb print around beard.
Infanta [M Smith 03] Clear pure orange buff with red beards.
Microwave [M Smith 07] Medium blue with darker fall area, creamy beard. Fragrant.
Robins Nest [03] S linen with greenish veins. F linen with brick stone veining and robin's egg blue beards.
Shallows [M Smith 06] S chartreuse. F light blue. Heavily ruffled.
Tahoma [M Smith 03] S yellow. F cream with dark violet veined pattern.

Mid-America Iris Garden donations

Attractive Lady [T Johnson 07] TB, 34" L. Ruffled and laced standards are peach flushed apricot. Falls are white with greenish gold texture veins, deep apricot hafts and narrow peach bands. Makes a very pretty clump

Compassionate [Black 07] TB 37" ML. Round, classically formed ruffled and lightly laced flowers. Colour is a mix of mango, apricot, and cantaloupe. Beards orange.

Dream Team [T Johnson 07] TB, 35", EM. Very vigorous with disease free foliage. White standards heavily overlaid with fine citron veins appear as pale lime-citron. Falls are darker citron-lime with paler centers and darker textured veining. Show stocks!

Face Of An Angel [Black 07] TB, 37" ML. Softly ruffled flowers have clean, icy light blue standards. Crisp white falls are strongly flared.

Happy Hugs [Black 07] TB, 38", ML. Shimmering white standards with centers lightly brushed yellow. White falls widely banded medium yellow with yellow textured veins around yellow beards.

I'm Back [T Johnson 07] TB 34" EM and Rebloom. Standards are medium lilac with rich dusty rose centers. Falls are velvety black cherry with root beer beards.

Ink Patterns [T Johnson 07] TB, 36. ML. Ruffled white flowers have standards with a wide plicata band with dotting in them and lines up the midrib. Falls have inky blue plicata bands and styles are indigo blue.

Money In Your Pocket [Black 07] TB, 44" ML. Medium cornflower blue with darker falls in centers blending to blue white margins.

Padded Shoulders [Black 05] TB, White standards with peach centers, white falls with apricot/peach hafts and orange beards.

Simply Sensational [T Johnson 07] TB, 33" L. Icy lavender standards and wide, heavily ruffled snow white falls.

Some Like It Hot [Black 07] TB, 32" ML. Standards are dark, rich apricot with heavily rose infused midribs. Falls velvety black-cherry with narrow band of iridescent red and burnt orange beards.

Thundering Ovation [Black 07], TB, 40: EM. Pristine white standards White falls with upper half veined and sanded rosy violet to plum. Lower half tan sanded and washed plum with narrow white rim. Medium yellow beards.

Go For Bold [Black 01] BB, yellow standards with white falls blending into a wide purple band with yellow beards. 2007 winner of the Knowlton Medal as best Border Bearded for this year.

Canadian Kisses [Black 06] SDB, Snow white with clear blue plicata bands and styles. Great clumps.

Celebrate [Black 07] SDB, 15", ML Standards mid silvery orchid with grape purple plicata bands. Falls are white washed light silvery lilac and banded iridescent red-grape.



'Iris, the flower for all seasons'

2007
Tours

Spring 2007
(April)

BCIS Events Detail, 2007

Garden Tours

See attached tour details and maps for the three BCIS Garden Tours this year.

We ask that you register with the Organizer of the tour[s] you are planning to attend so they are able to make arrangements based on expected numbers. Please feel free to bring a friend but be sure they are registered.

For your information BCIS is now a member of the Council of BC Garden Clubs and we have insurance through the Council to cover all BCIS activities.

We are excited to have Debbie Cole and Jean Witt visit with us in BC the second week of June. Debbie is President of the Society for Pacific Coast Native Iris and Jean is a long time hybridizer and grower of Species and other iris. They will be joining us for the Chilliwack Garden Tour on June 4th and again at a Local Garden Tour on Salt Spring Island on June 6th. We will meet at Joyce Prothero's place at 10:00 am followed by Len and Rosemary Wallbank's garden and then Betty Pellet's. Debby and Joyce will then address a gathering the following week on the Sunshine Coast. Please contact Harry Hill [604 885 9769, or harryh@dccnet.com] for details.

Local Tours and Workshops

Members on Salt Spring Island will be hosting a local Workshop on May 29th from 10:00 am to about 3:00pm We will begin at Ted Baker's [185 Furness Road] where we will go through some of the 'hands on' activities when working with bearded and Siberian irises. We will include deadheading, keeping your beds clean, mulching, dividing and transplanting, thinning, and using irises as cut flowers. We will then go to Joyce Prothero's [281 Cudmore Heights] and have a similar session for Pacific Coast irises. Bring your lunch and your questions. All members of BCIS are welcome.

If you would like to host a Workshop in your area please call Ted Baker so members in your area can be contacted and we can help with resource people if needed.

Joint Iris Purchase from Aitken's Salmon Creek Garden

As noted in the Newsletter a joint iris purchase is being organized with Terry and Barbara Aitken. This will reduce costs and prevent long delays at Customs. If you would like to take part and would like a catalogue let Ted Baker know and he will send you one as long as supplies last. You can also see Aitken's Salmon Creek Garden's online catalogue at www.flowerfantasy.net. When you have decided what you wish to purchase, just send your payment to Aitkens in US funds [do not send the order to Ted Baker]. You must have your order in by July 16th so arrangements can be made for the phytosanitary inspection and getting the plants ready for shipping. As Ted will be picking up the joint order in August do not send money for the Phytosanitary Certificate or shipping. If your plants need to be mailed to you from Salt Spring you will need to pay the postal costs. If you have any questions please contact Ted [250] 653 4430 or tedebaker@shaw.ca.

Articles and pictures for the next Newsletter.

If you would like to contribute something for the next Newsletter please send it to Marshall Soules [soules@mala.bc.ca]. We are planning to include a Q and A section.

We would also like to learn more about the gardens and gardening experiences of our members. So, if you would like to tell us a bit about your garden that would be great.

Members enjoy photos in the Newsletter but Marshall has asked that we strive for the very best quality we can get. Local Garden Clubs and Adult Education Organizations often have courses on photographing plants and this is a good place to start.

Membership Dues

If you have not paid your membership dues for 2007 now is the time. Just a reminder that dues are \$15.00 for a single and \$16.00 for a family and this will cover the period until May 2008. You may also pay for multiple years if you prefer. Your membership dues make BCIS possible and for example are used to print and send the Newsletter and other materials, pay for the website, and pay for insurance for BCIS functions. Please send your cheque, payable to BCIS to Joyce Prothero, 281 Cudmore Heights, Salt Spring Island, BC, V8K 2J7. If you have any questions about your membership please contact Joyce at [250] 537 9215 or jprothero@saltspring.com.

BCIS Silent Auction 2007

Included in the list of irises for sale in the Silent Auction this year are three Species iris, and some bearded and Siberian iris which include newer varieties from excellent hybridizers, plus classic, outstanding, award winning varieties that have proven themselves over time. There are pictures of many of the irises in the last Newsletter, on the BCIS website or in Aitken's catalogue at www.flowerfantasy.net. Other good websites can be found on the American Iris Society website www.irises.org. Remember that you must send your bid[s] to Robb Smith [405 Walkers's Hook Road, Salt Spring Island, BC., V8K 1N7 or resmith@saltspring.com] by July 31, 2007 either by mail or e-mail. Bids will not be accepted by phone. If there is a tie the bid received first is the winning bid. If you are successful you will be responsible to pay shipping costs.

Crested Iris

These crested iris, all in the Lophiris Section, have longitudinal ridges or crests on their falls and grow from rhizomes.

Iris tectorum (2) A beardless iris from Japan, blooming in June with bright lilac flowers.

Iris confusa (2) Leaves like fans on a stalk like a bamboo. Lavender or white flowers. Shade tolerant.

Iris milesii A tall Himalayan iris with branching flower scapes of violet flowers.

Tall Bearded

Historic/antique Collection_The following is being offered as a collection. These older irises are hardy to zone 3, are vigorous and good increasers. The flowers are graceful and will bring back memories of your Grandmother's garden! 1. **Florentina** (early white), 2. **Gracchus** (yellow purple variagata), 3. **Gingersnap** (bronze), 4. **Flavecens** (cream yellow bitone), 5. **Night Raider** (purple black) 6. **Golden Mustard** (streaky gold).

Bewilderbeast [TB, Kasperek 1995] Standards medium violet streaked white with mauve falls streaked white and gold. A reliable grower and very unusual.

Blueberry Bliss [TB, Schreiner 2004] Frothy navy blue, huge ruffled flowers. An average of 8-10 flowers on well branched stems.

Crowned Heads [TB, Keppel 1997] Deep violet blue standards with milky light blue falls. Great colour! Dykes Memorial Medal winner in 2004.

Dangerous Mood [TB, Schreiner 2004] Pale blue standards perfectly compliment the dark midnight falls. HM 2006.

Dusky Challenger [TB, Schreiner 1986] Huge, silky rich purple on beautifully branched, strong stems. Dykes Memorial Medal winner in 1992. Voted the favourite Tall Bearded iris each year for the past six years.

Happenstance [TB, Keppel 2000] Ruffled and lightly laced coral bearded clear pink. Good grower. Walther Cup 2002, Wister Medal 2006. Considered by Keith Keppel to be his best pink to date.

Over Alaska [Schreiner 2003] Large, wide flowers with crisp, icy white standards over deep marine blue falls. Good grower. HM in 2005.

Parisian Dawn [TB, Keppel 2006] Creamy apricot standards with paler falls edged twilight mauve. Scarlet vermilion beards. Broad, flared and waved form.

Sea Power [TB, Keppel 1999] Corn flower blue with incredible ruffling. Dykes Memorial Medal winner in 2006.

Splashacata [TB, Tasco 1998] Light blue lavender standards with white falls peppered with lavender dots. Dykes Memorial Medal winner in 2005.

Wonderful World [TB, Schreiner 2004] Rosy magenta standards. Falls heavily sanded with a 1 inch plicata pattern of the same colour over a creamy yellow ground colour. Bright tangerine beards. Eight to 10 triple-socketed buds per stalk.

Intermediate Bearded

Cayenne [IB, M. Smith 2006] Very dark red standards with red black falls and vermilion beards. Velvet smooth, wide flowers and pronounced fragrance.

Delirium [IB, M. Smith 2001] Smoky gold standards with a maroon overlay on falls; red beards. Wonderful! AM 2005.

Star Women [IB, M. Smith 1998] Dark purple standards and wide rim on white falls. Classy. Sass Medal 2005 and runner up for Dykes Memorial Medal in 2006.

Standard Dwarf Bearded

Artful Tradition [SDB, B. Jones 2006] Ruffled, domed white standards with wide round falls that are moss green at hafts giving way to a wide band of blue violet surrounded by wide white rims. Bright orange beards tipped yellow.

Cat's Eye [SDB, P. Black 2002] Dusky rose standards, black cherry falls edged rose. Outstanding! AM 2006. Winner of Walther Cup and Lankow Medal.

Puddy Tat [SDB, P. Black 2002] Opaque blue white standards and precise band on blue black falls! AM 2006.

Siberians

Blueberry Fair [Sib, Hollingworth 1997] Round, ruffled mid violet blue with white blaze. Morgan-Wood Medal 2004.

Roaring Jelly [Sib, Schafer/Sacks 1992] A range of lavender to deep maroon with a blue flash. Voted most popular Siberian in 2004 and 2005. Morgan-Wood medal 1999.

Strawberry Fair [Sib, Hollingworth 1994] Round, ruffled lavender pink with white blaze. Morgan-Wood Medal 2001.

Sat

BCIS Victoria Garden Tour, May 26th, 2007

The tour will begin at 9:30 am at the garden of Jenny and Doug Cree. At that time helpful travel information will be given by our tour coordinator, **Gordana Lazarevich**.

Registration: Although attendance at this event is free, registration is required to assist the hosts with a successful organization of the events. Members who are planning to attend the event need to register by May 23 at the latest. For those in the Victoria area please register by leaving a message at either 250 479 3382 or 250 479 2904 or by e-mail at <gordana1@shaw.ca>. For those on Salt Spring please register with Jean Addison at 537 1558 after May 5th and before May 23rd.

Lunch - a simple lunch of soup, bread, soft drinks and juices, and cookies will be provided at Echo Valley Farm.

Tour Gardens

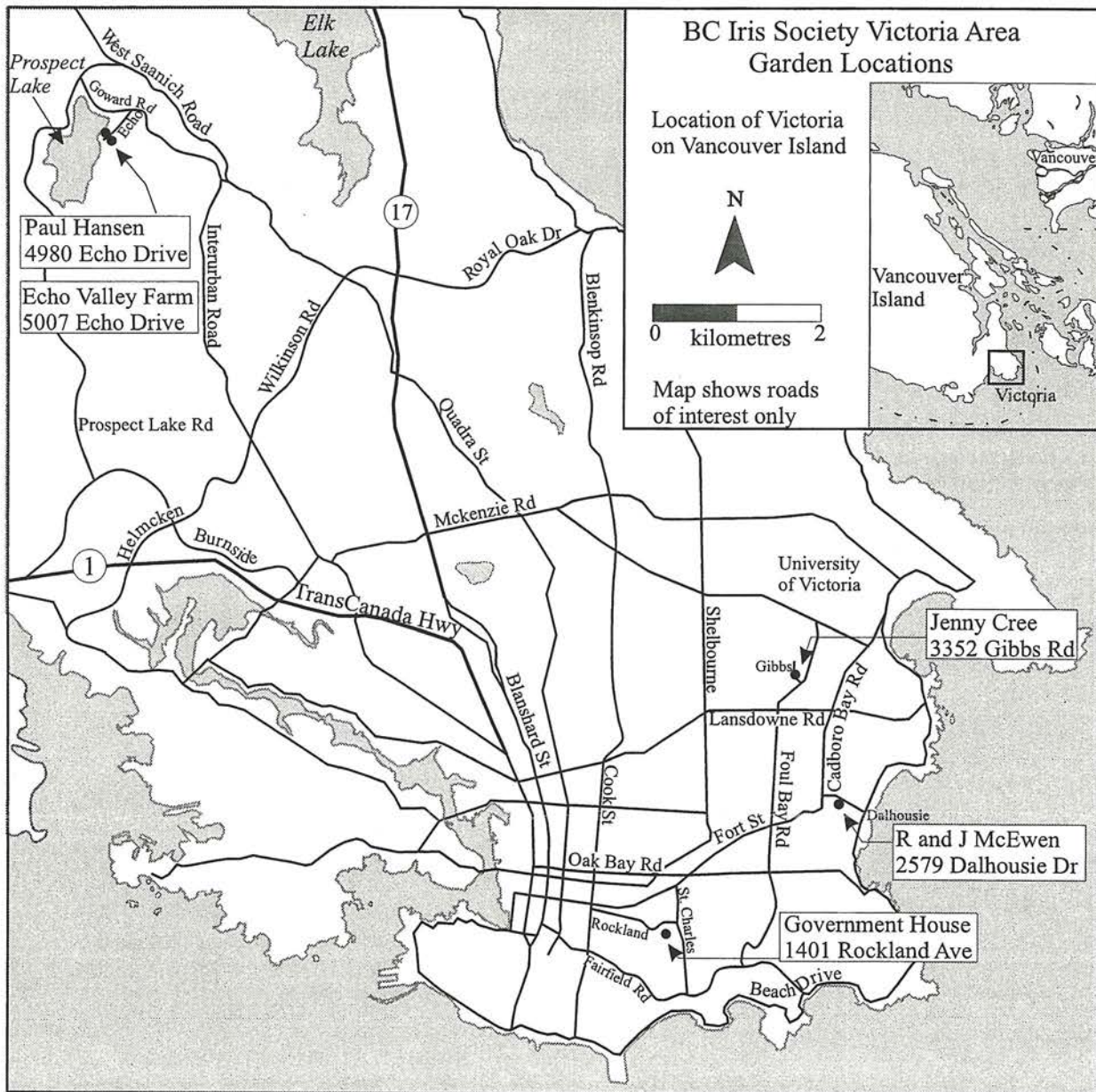
1. Jenny and Doug Cree: (3352 Gibbs Road) Some of the irises are well-established (three years), and some are younger. There are Siberians, 3 Pacific Coast Irises, and some newly seeded expected to sprout this spring. The Irises are of varying sizes.

2. Paul Hansen: (4980 Echo Drive) One of the best orchid growers in British Columbia, if not in Canada, Paul is passionate about his countless varieties, which include rare specimens. It is a real privilege to be able to visit Paul's greenhouse. He also has some irises acquired from Ted, in his outdoor garden.

3. Echo Valley Farm: (5007 Echo Drive) Neighbours of Poul's, Echo Valley Farm and Rebecca's Garden is an organic farm that grows potatoes, beans, lettuces, winter greens, and seeds. The iris garden may or may not be ready for viewing, as it suffered extensive damage in the fall, and still needs much TLC attention. However, the location offers information on organic farming, and the hostesses provide lunch.

4. Randy and Janice McEwen: [2579 Dalhousie St]. features, in addition to irises, a pond, multitudinous ferns, and May trees, much of it cultivated lovingly by Mrs. McEwen.

5. Government House: [1401 Rockland Ave.] This residence of British Columbia's Lieutenant Governor features some 22 gardens of which the Iris Garden was especially designed by noted authority on Iris, Ms. Joy Flint. According to the information on the internet: "The garden consists of two parts; the larger part designed as a leaf with veins planted with dwarf iris and other iris in between. The smaller bed is triangular and planted with modern varieties of Bearded Iris."



MAY 26

BCIS Okanagan Garden Tour 2007, Saturday, June 2nd

At 9:30 Saturday morning we will meet in Penticton at Robyns Donuts/Deli on the highway at Fairview Avenue [it is at the Midway Channel Bridge] and arrange carpools. From there we head 15 minutes north to the Summerland Ornamental Garden and connect with folks coming down from Kelowna and Vernon. During the day we will be visiting gardens in Penticton, Kaleden, Cawston/Keremeos, and then circling back through the Green Mountain Valley to our place at Farleigh Lake for a windup B'que. Lunch will be at Linden Garden's new cafe.

Early June weather is unpredictable and the only time of year when we actually expect rain so be prepared! For more information phone me at 250-490-4928 or email : penny_santosham@telus.net Registration is by May 12th. For accommodations and city events call the Penticton Wine Country Visitor Centre at 1-800-663-5052. Try our Saturday Main St. market - starts at 7:30 am.

1. SUMMERLAND ORNAMENTAL GARDENS: 4200 Hwy 97 South. We will start here at 10:00 in the Bearded Iris Garden which is on the south slope half way up the entry driveway. The whole garden is several acres, financed by volunteers and affiliated with the adjacent Federal Research Station. They have biyearly plant sales, tea parties, picnics and special events. Entrance is free but boxes are around for donations.
2. TERESA AND JERRY NOLET: 319 Newton Drive. Teresa is the local antique expert and owns a lovely tea room/shop in Okanagan Falls. Their home is on the West Bench above Penticton. Teresa has been collecting irises for several years but most are unnamed and she is hoping visitors will help with identification so she can label them.
3. LINDEN GARDENS: 351 Linden Ave. Kaleden. Margaret and Ken Hayter opened their 9 acre perennial garden to the public last spring and spent the winter completing a beautiful post and beam garden café/shop. This one time family orchard overlooks Skaha Lake and has many man made ponds, creeks, bridges, paths and specialty beds. The gardens have already become a favorite place for weddings and parties. Free entrance for BCIS.
4. ANME SING: 2177 Newton Road, Cawston. After lunch we will drive south then east about 35 minutes to Anme's 1 acre garden on the bluffs above Keremeos. Anme brings in irises, daylilies and special perennials from around the world - currently over 400 hundred kinds of TB irises. They make a breathtaking display. She opens for public sales/orders one weekend in May and attracts gardeners from all over the Okanagan, even the Fraser Valley.
5. PENNY & TOM SANTOSHAM: 198 Farleigh Lake Road. Our windy 2 acre garden is beside a small lake in the hills 12 K East of Penticton. Last summer was year 6 gardening on old ranch land and I redid most of the flower beds. There are lots of new single rhizomes in my iris collection of about 200 so bloomtime will be full of surprises. Bird watchers bring binoculars as we have dozens of hummingbirds as well as resident eagles, loons, kingfishers, bluebirds, herons killdeer, meadowlarks, crossbills and songbirds. Let's hope for good weather.

Tom is going to man the barbeque for an early dinner around 5:30 of hamburgers, salads, punch, tea, coffee. \$5.00 per person or bring something. BYOB. Ted's going to do a little talk. Please join us!

BC Iris Society Okanagan Garden Locations

Map shows roads of interest only

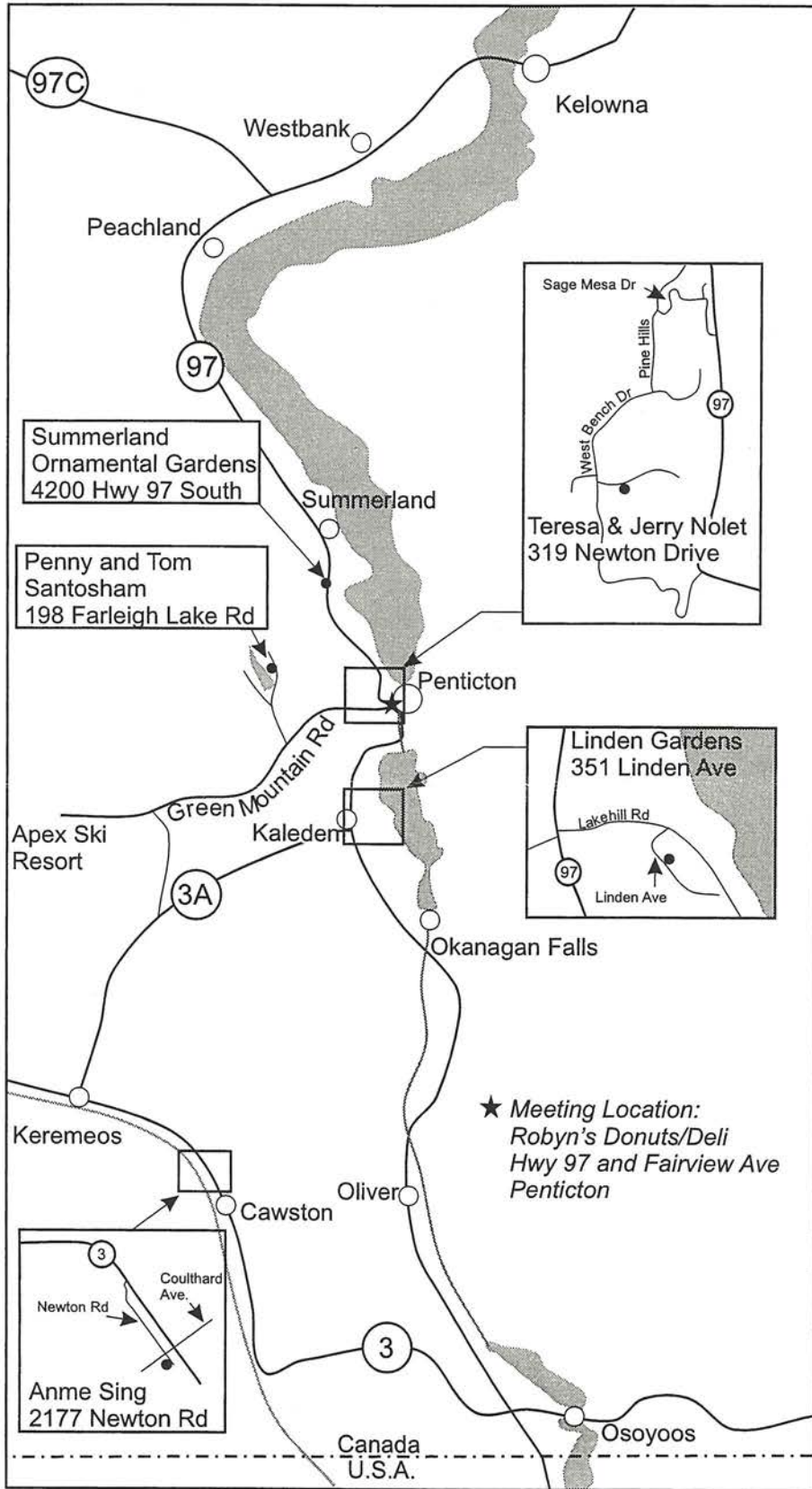


0 kilometres 20

Location of the Okanagan Region in BC



Access from Vancouver via
TransCanada (Hwy1) to
Hwy 3 or Hwy 5 and 97C



BCIS Chilliwack Garden Tour, Monday, June 4th, 2007

Some of us were fortunate enough to visit the gardens on this tour last year. The are wonderful and members are encouraged to be on this tour if they can. The tour will begin at Henry and Molly Pauls, at 1:00pm.. Please register by June 2nd with Henry Pauls at 604 858 9549 or Ted Baker at 250 653 4430 or tedebaker@shaw.ca. Some car pooling can be arranges if people wish. We will be joined by Debby Cole and Jean Witt and we really look forward to learning from them.

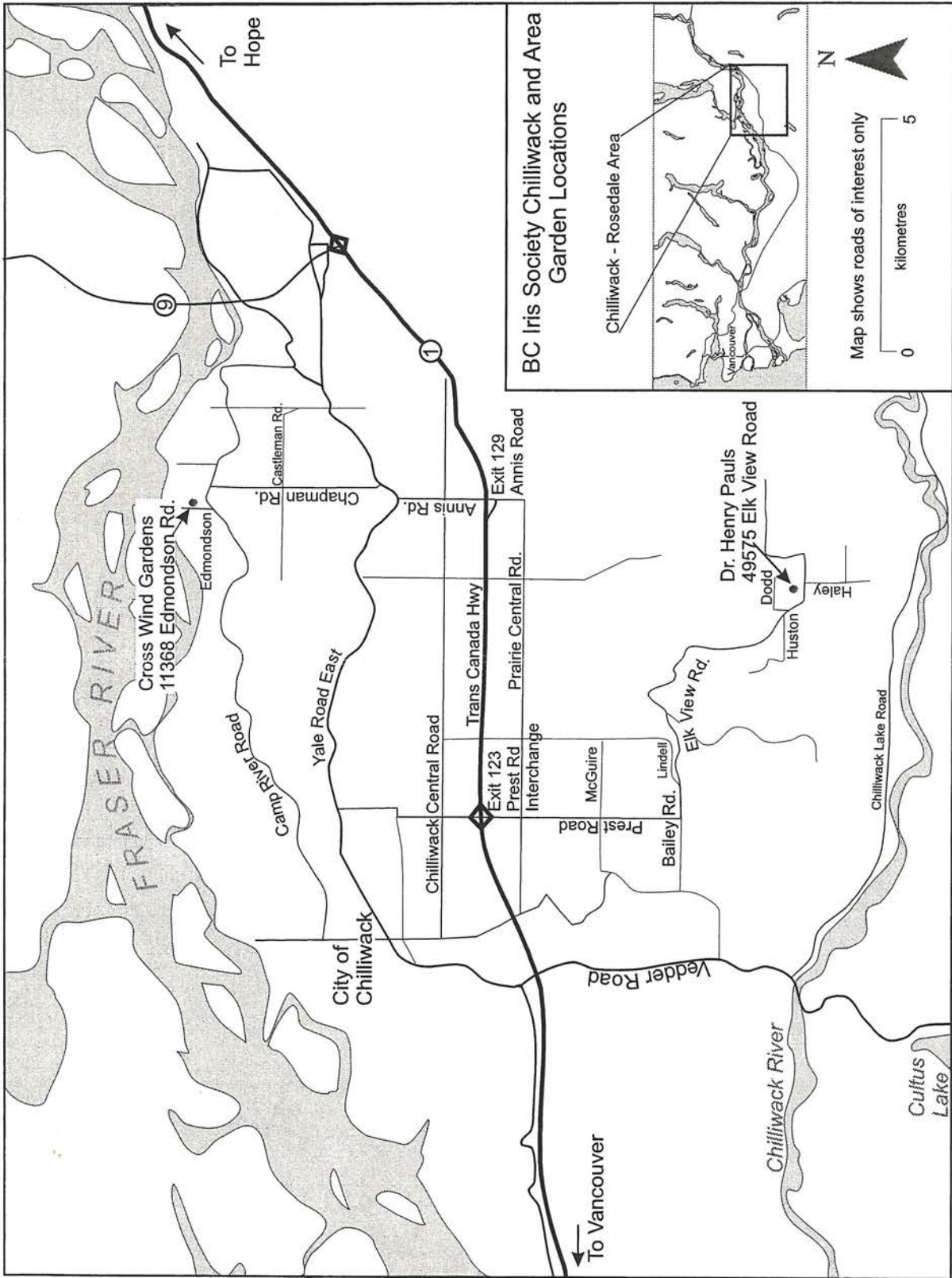
1. Woodside Garden, Henry and Molly Pauls [49575 Elk View Road]. Henry and Molly have a large acreage dominated by second growth Douglas-fir and Western red Cedar with a year round creek. The cultivated areas include an arboretum, fruit trees, vegetable garden, and rows of perennials. But the real reason for coming is to see acres of Siberian iris in bloom. There are over 350 varieties displayed in forested clearings. Plants will be for sale.

3. Cross Wind Gardens, Ali van Klei and Lynn Griffith [11368 Edmondson Road] This two acres of garden is home to over 300 varieties of Siberian iris. They are laid out in a very pleasing display and grow very well on the Fraser floodplain soil. There is also a good collection of other garden perennials. Irises will also be on sale at this garden.

Joyce Prothero
281 Cudmore Heights
Salt Spring Island BC, V8K 2J7

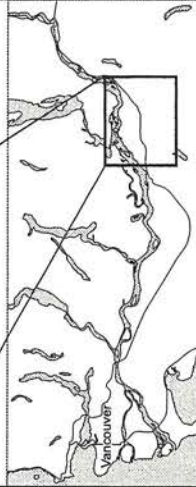
Baker, 183 Furrow Rd, SSI, BC, V8K 1Z7
BC Iris Society



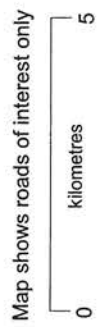


BC Iris Society Chilliwack and Area Garden Locations

Chilliwack - Rosedale Area



N



Map shows roads of interest only

Cross Wind Gardens
11368 Edmondson Rd.

Dr. Henry Pauls
49575 Elk View Road

City of Chilliwack

To Vancouver

To Hope

FRASER RIVER

Chilliwack River

Cultus Lake

Chilliwack Central Road

Yale Road East

Camp River Road

Castleman Rd.

Chapman Rd.

Edmondson

Exit 129
Annis Road

Trans Canada Hwy
Prairie Central Rd.

Exit 123
Prest Rd
Interchange

McGuire
Prest Road

Bailey Rd.

Lindell

Elk View Rd.

Huston

Dood

Haley

Chilliwack Lake Road

Vedder Road

9

1