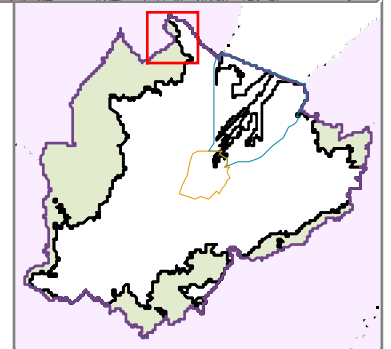
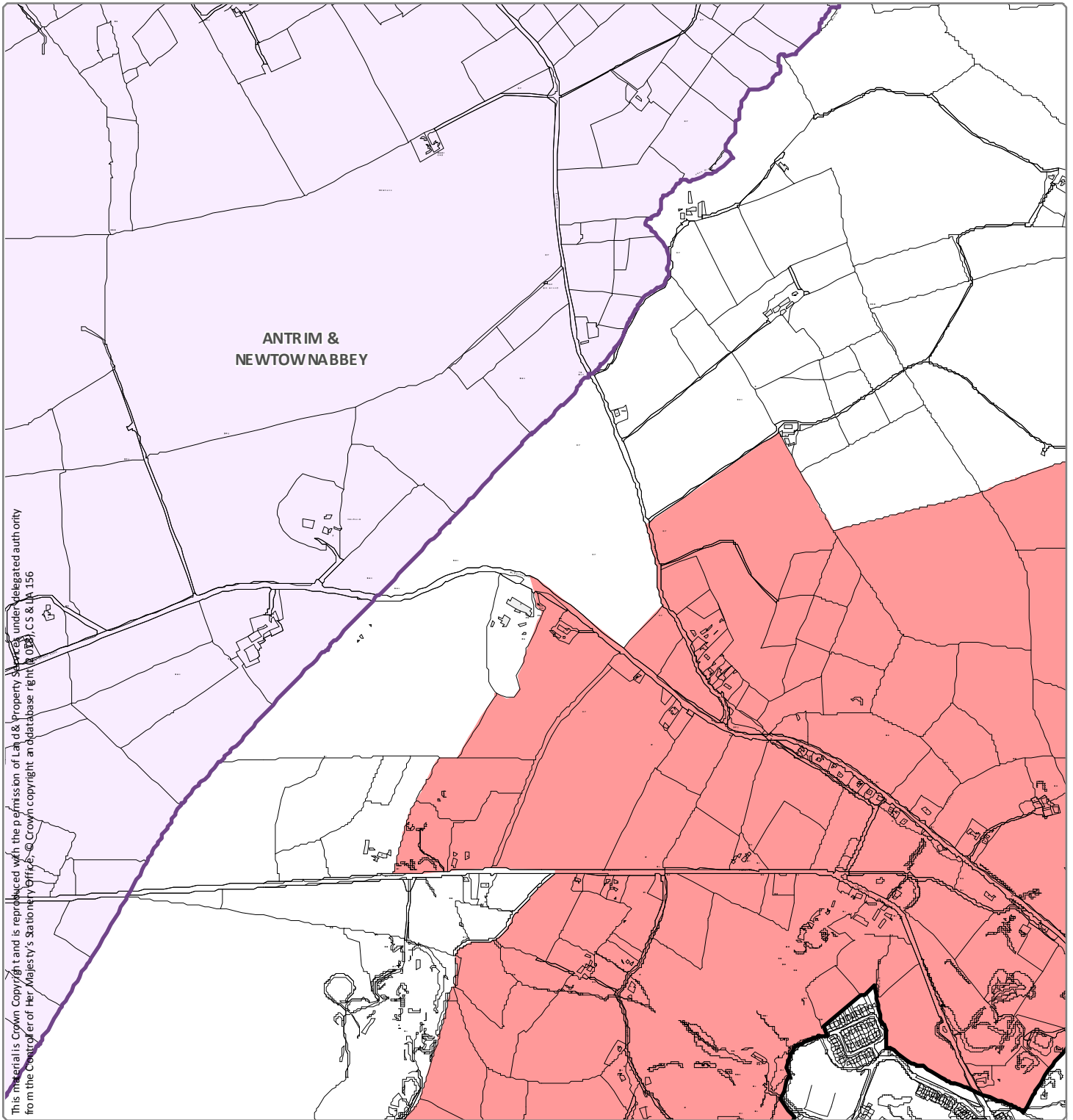


Designation Ref: COU 5/04 (Page 1 of 13)
Location: BELFAST BASALT ESCARPMENT




Source: Draft Belfast Metropolitan Area Plan 2015 in its most advanced stage prior to formal adoption
 Note: Only the above Designation Ref is shown on this map

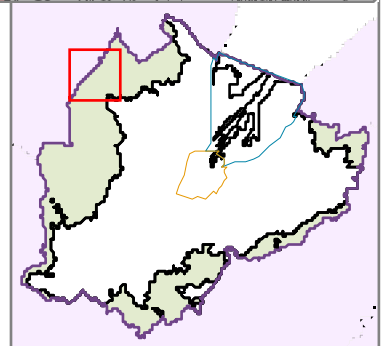
Scale 1:12,000

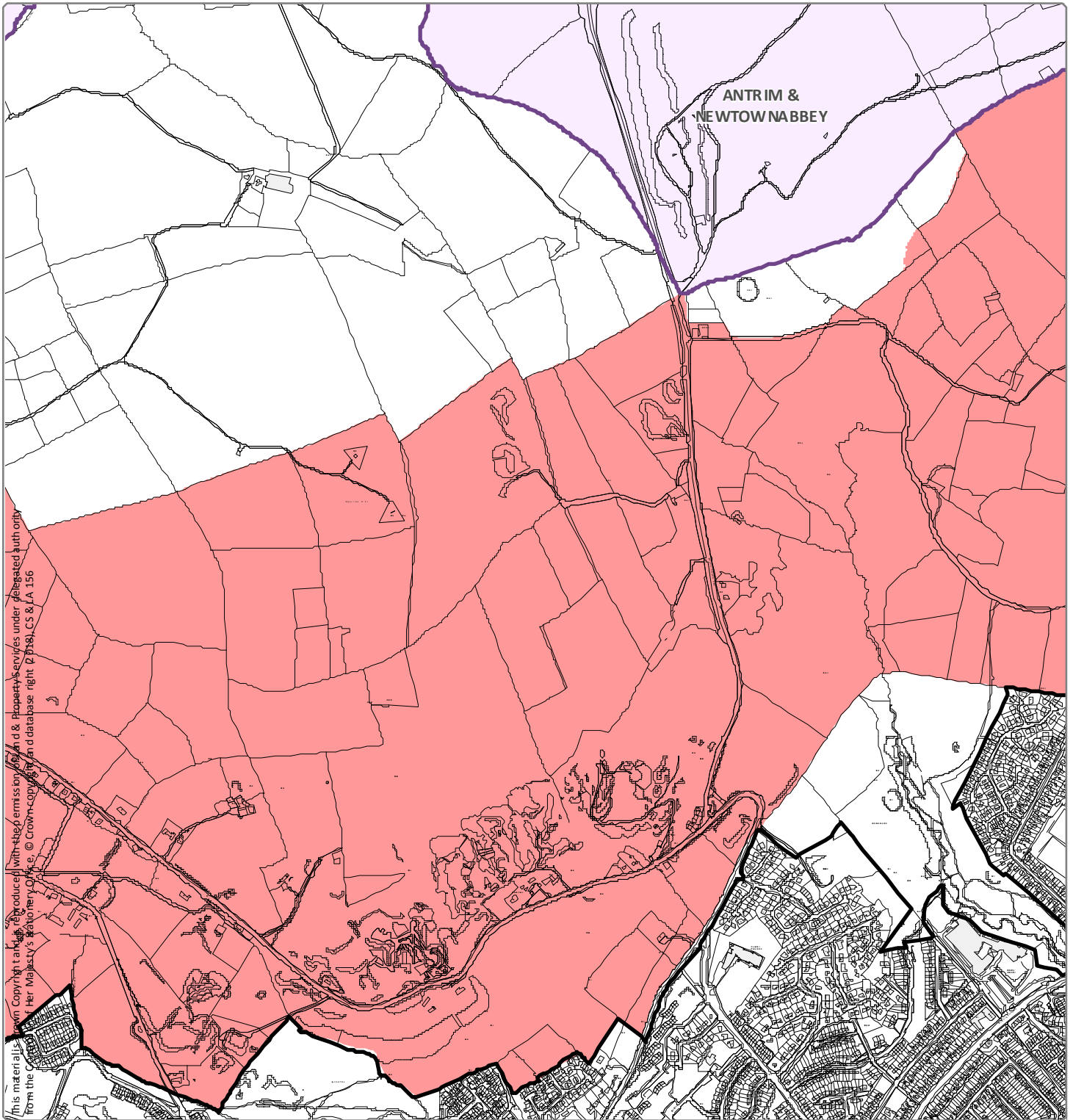


Designation Ref: COU 5/04 (Page 2 of 13)
Location: BELFAST BASALT ESCARPMENT

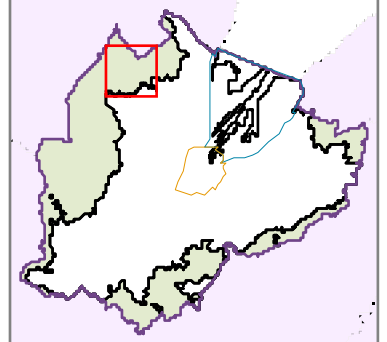
Source: Draft Belfast Metropolitan Area Plan 2015 in its most advanced stage prior to formal adoption
 Note: Only the above Designation Ref is shown on this map

Scale 1:12,000 



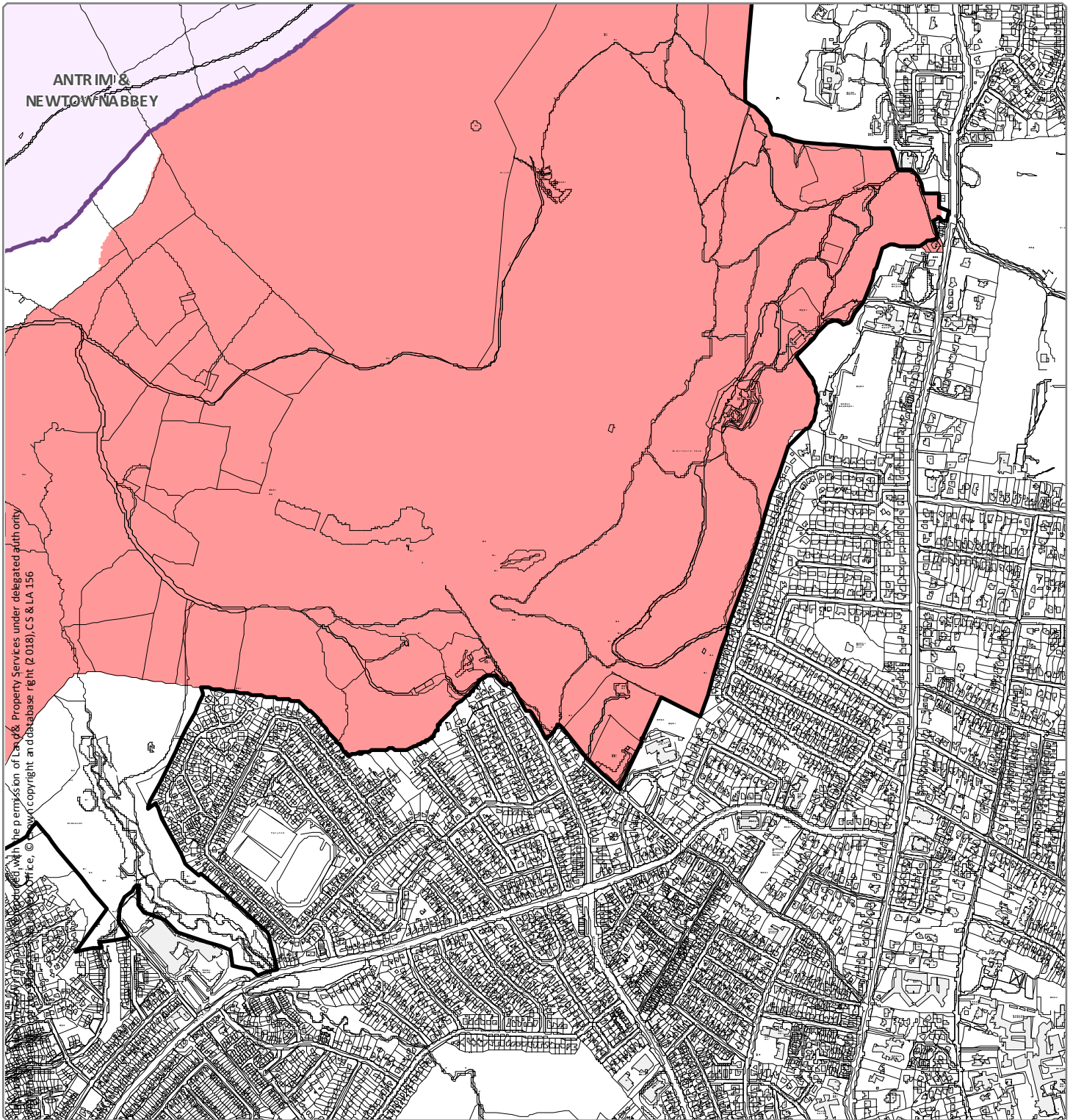


Designation Ref: COU 5/04 (Page 3 of 13)
Location: BELFAST BASALT ESCARPMENT



Source: Draft Belfast Metropolitan Area Plan 2015 in its most advanced stage prior to formal adoption
 Note: Only the above Designation Ref is shown on this map

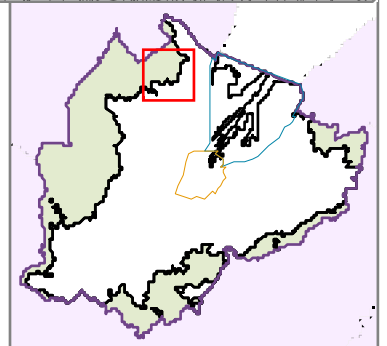
Scale 1:12,000

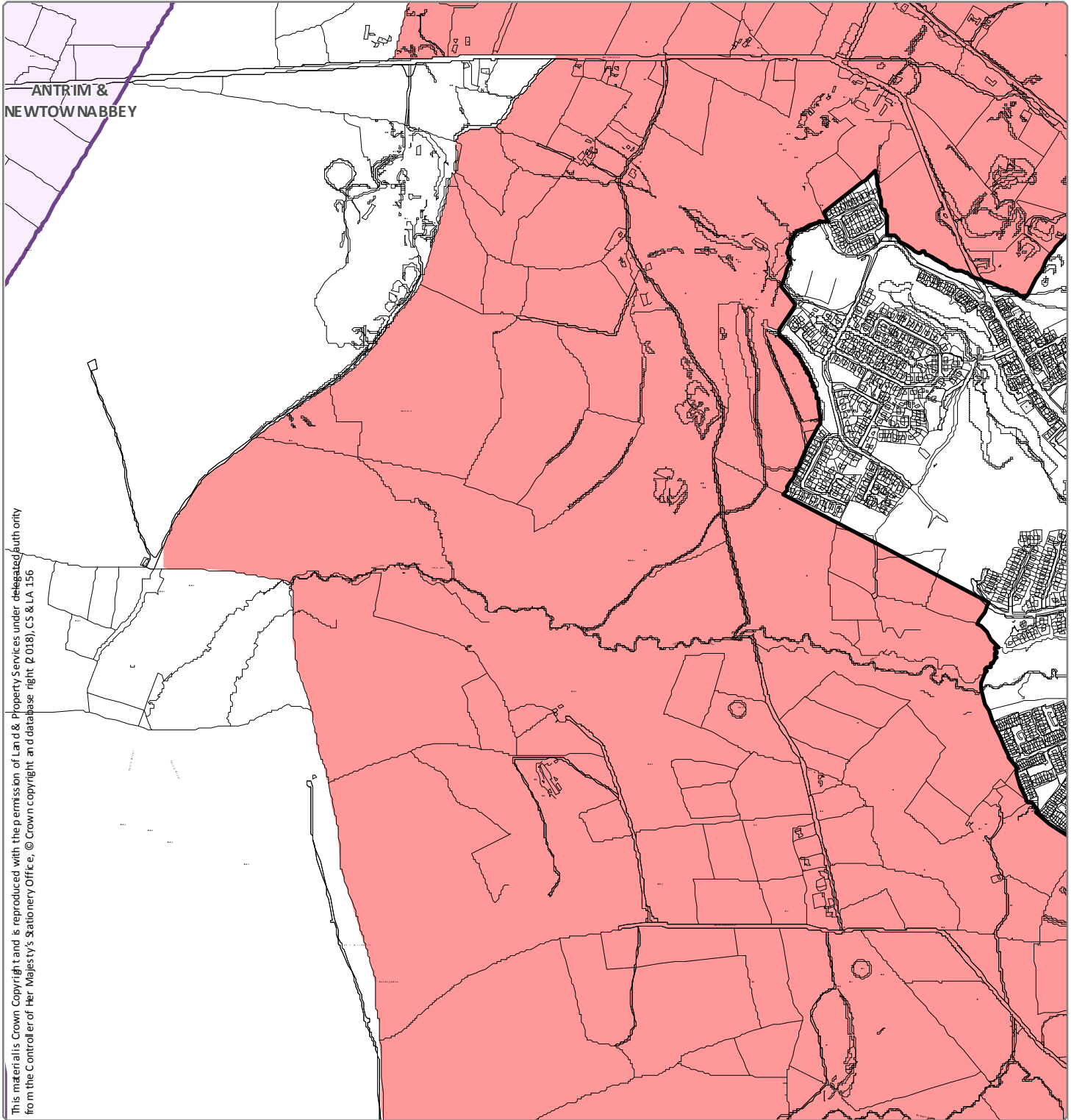


Designation Ref: COU 5/04 (Page 4 of 13)
Location: BELFAST BASALT ESCARPMENT

Source: Draft Belfast Metropolitan Area Plan 2015 in its most advanced stage prior to formal adoption
 Note: Only the above Designation Ref is shown on this map

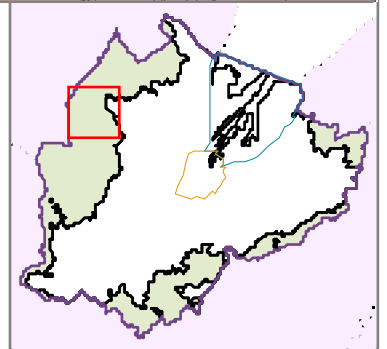
Scale 1:12,000





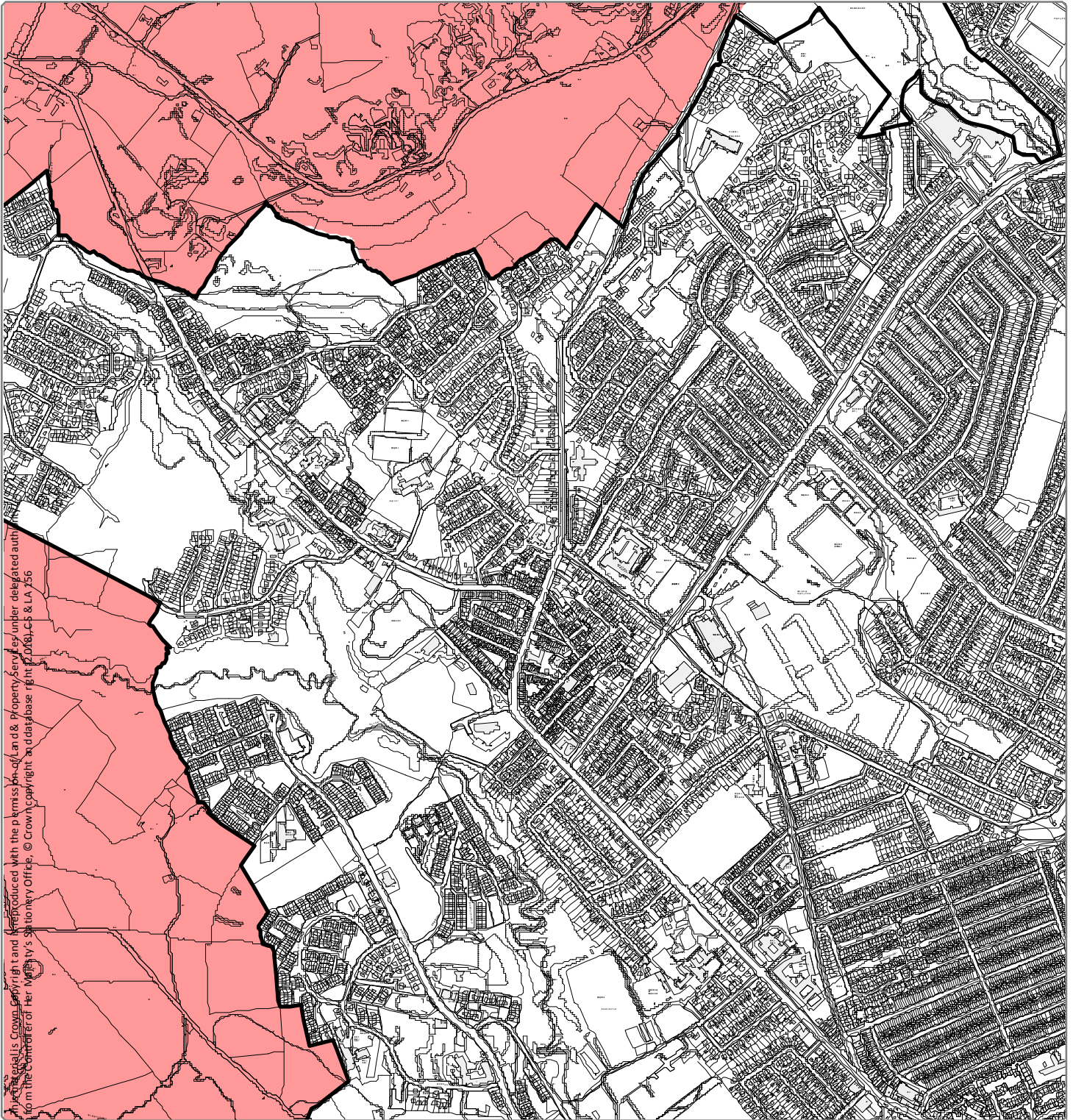
This material is Crown Copyright and is reproduced with the permission of Land & Property Services under delegated authority from the Controller of Her Majesty's Stationery Office, © Crown copyright and database right, (2018), CS & LA 156

Designation Ref: COU 5/04 (Page 5 of 13)
Location: BELFAST BASALT ESCARPMENT



Source: Draft Belfast Metropolitan Area Plan 2015 in its most advanced stage prior to formal adoption
 Note: Only the above Designation Ref is shown on this map

Scale 1:12,000

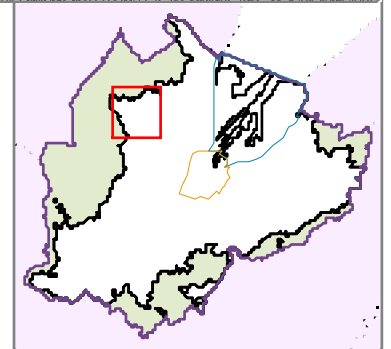


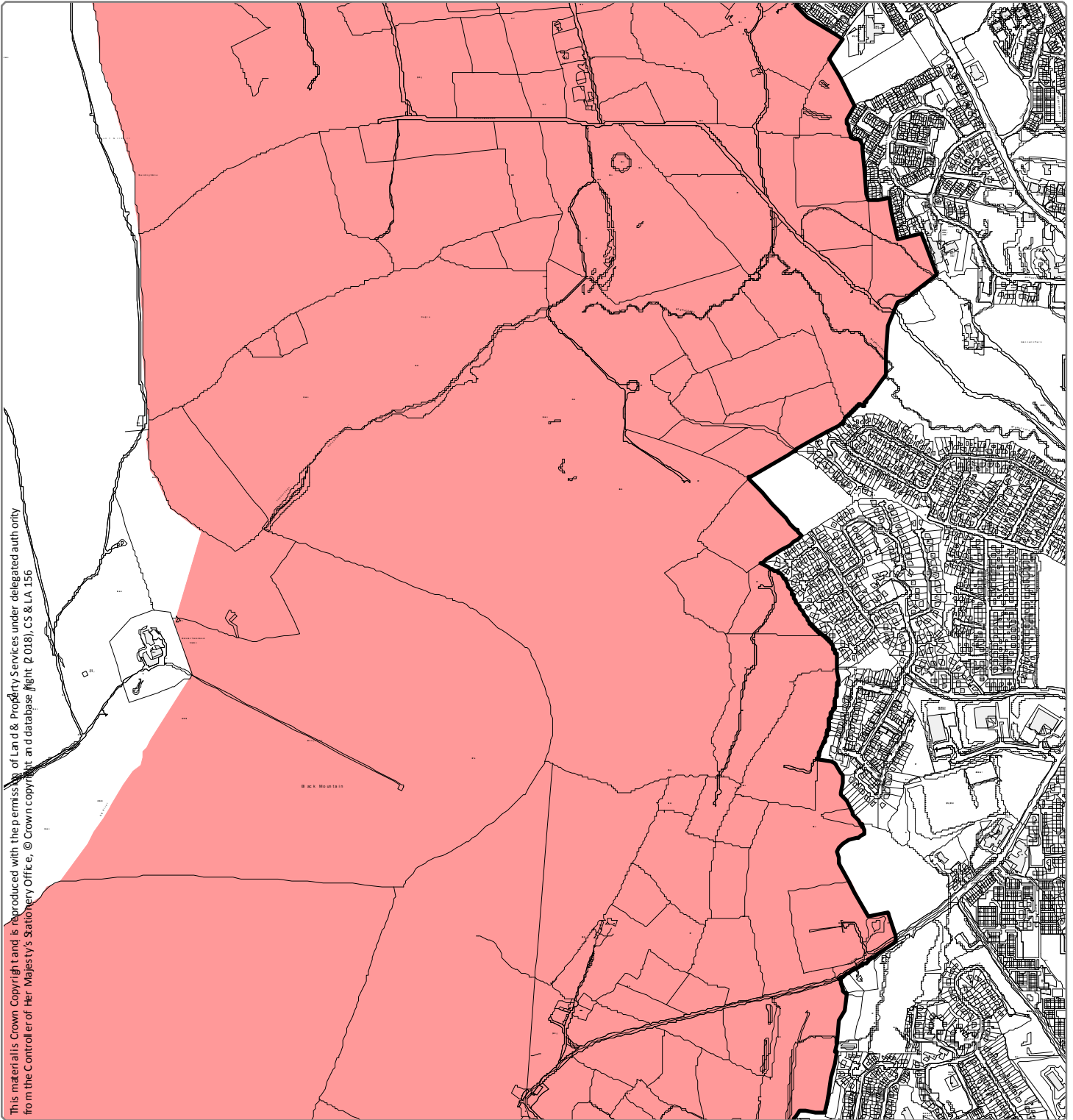
All rights reserved. Crown copyright and reproduced with the permission of Ordnance Survey under delegated authority from the Controller of Her Majesty's Stationery Office. © Crown copyright and database right 2018, OS & LA 256

Designation Ref: COU 5/04 (Page 6 of 13)
Location: BELFAST BASALT ESCARPMENT

Source: Draft Belfast Metropolitan Area Plan 2015 in its most advanced stage prior to formal adoption
Note: Only the above Designation Ref is shown on this map

Scale 1:12,000




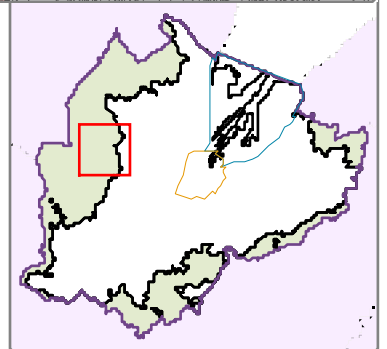


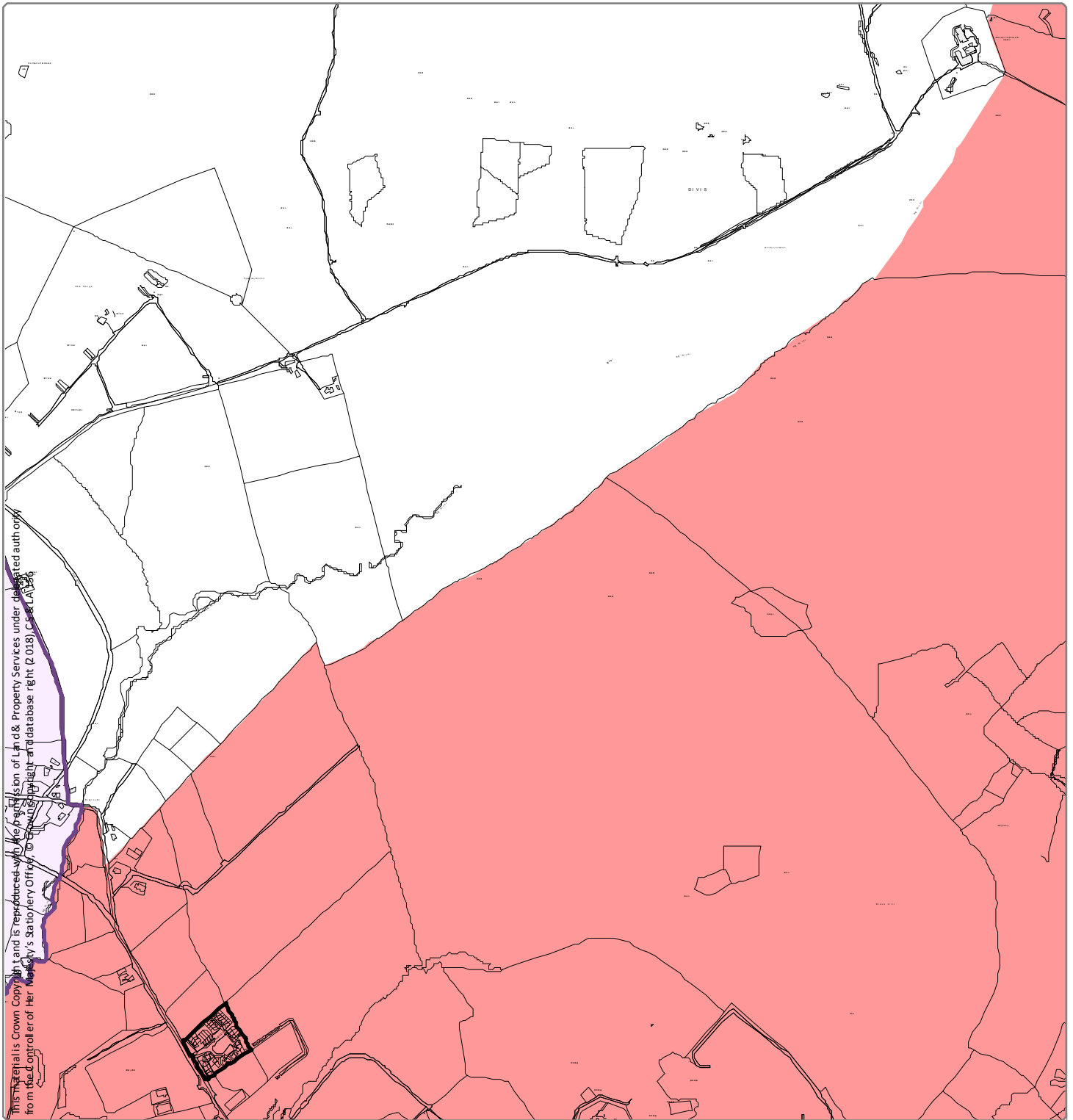
This material is Crown Copyright and is reproduced with the permission of Land & Property Services under delegated authority from the Controller of Her Majesty's Stationery Office, © Crown copyright, map and database right, 0 018, CS & LA 156

Designation Ref: COU 5/04 (Page 7 of 13)
Location: BELFAST BASALT ESCARPMENT

Source: Draft Belfast Metropolitan Area Plan 2015 in its most advanced stage prior to formal adoption
 Note: Only the above Designation Ref is shown on this map

Scale 1:12,000 




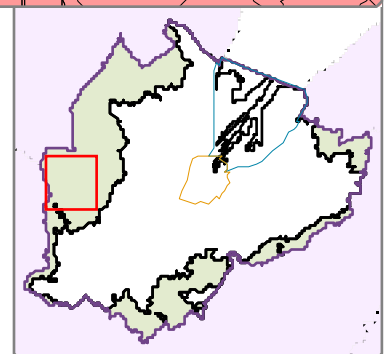


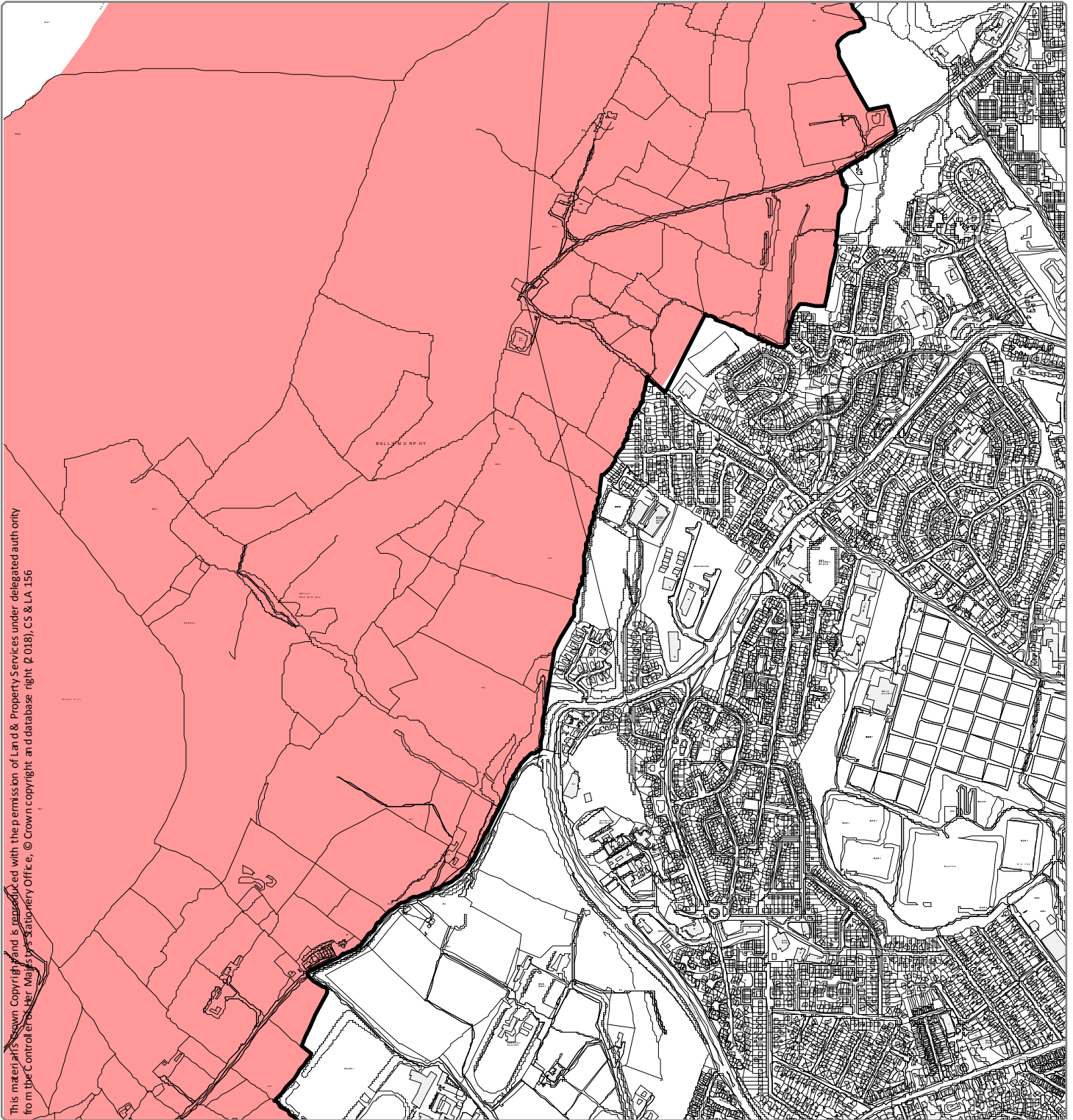
THIS MATERIAL IS Crown Copyright and is reproduced with the permission of Land & Property Services under delegated authority from the Controller of Her Majesty's Stationery Office. To view this map on-line please visit the website: www.belfast.gov.uk

Designation Ref: COU 5/04 (Page 8 of 13)
Location: BELFAST BASALT ESCARPMENT

Source: Draft Belfast Metropolitan Area Plan 2015 in its most advanced stage prior to formal adoption
Note: Only the above Designation Ref is shown on this map

Scale 1:12,000 




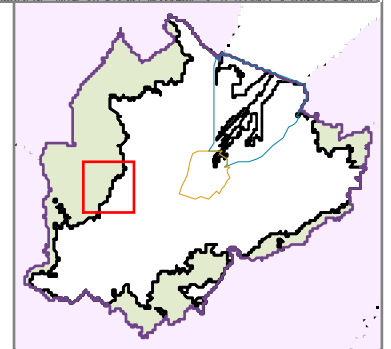


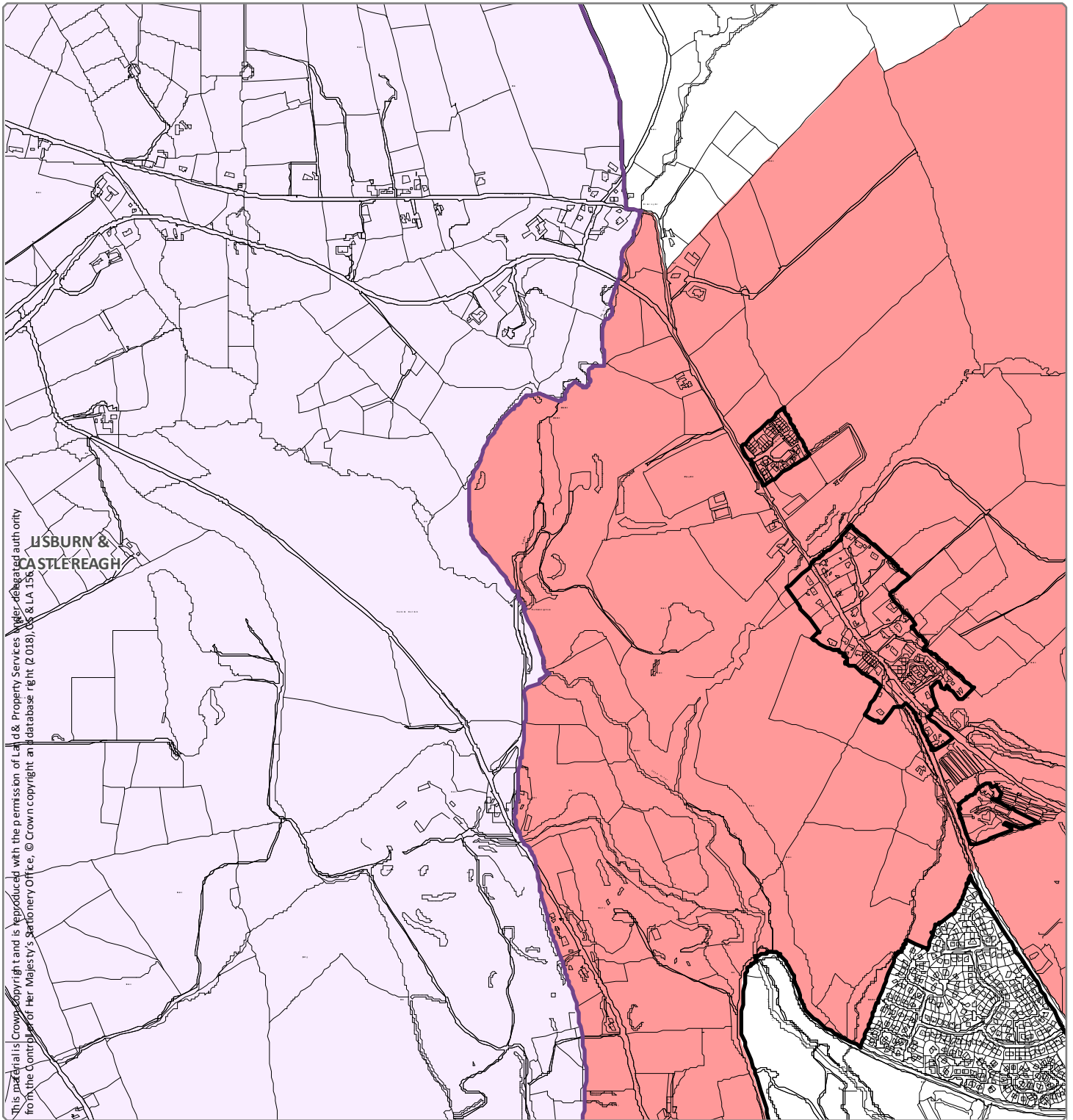
This material is Crown Copyright and is reproduced with the permission of Land & Property Services under delegated authority from the Controller of Her Majesty's Stationery Office, © Crown copyright and database right, (2018), CS & LA 156

Designation Ref: COU 5/04 (Page 9 of 13)
Location: BELFAST BASALT ESCARPMENT

Source: Draft Belfast Metropolitan Area Plan 2015 in its most advanced stage prior to formal adoption
Note: Only the above Designation Ref is shown on this map

Scale 1:12,000 

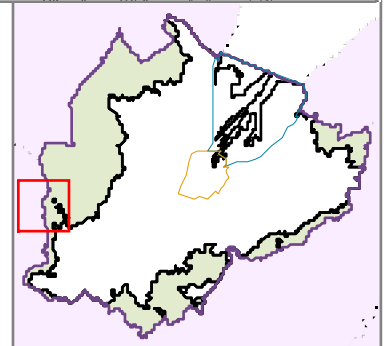


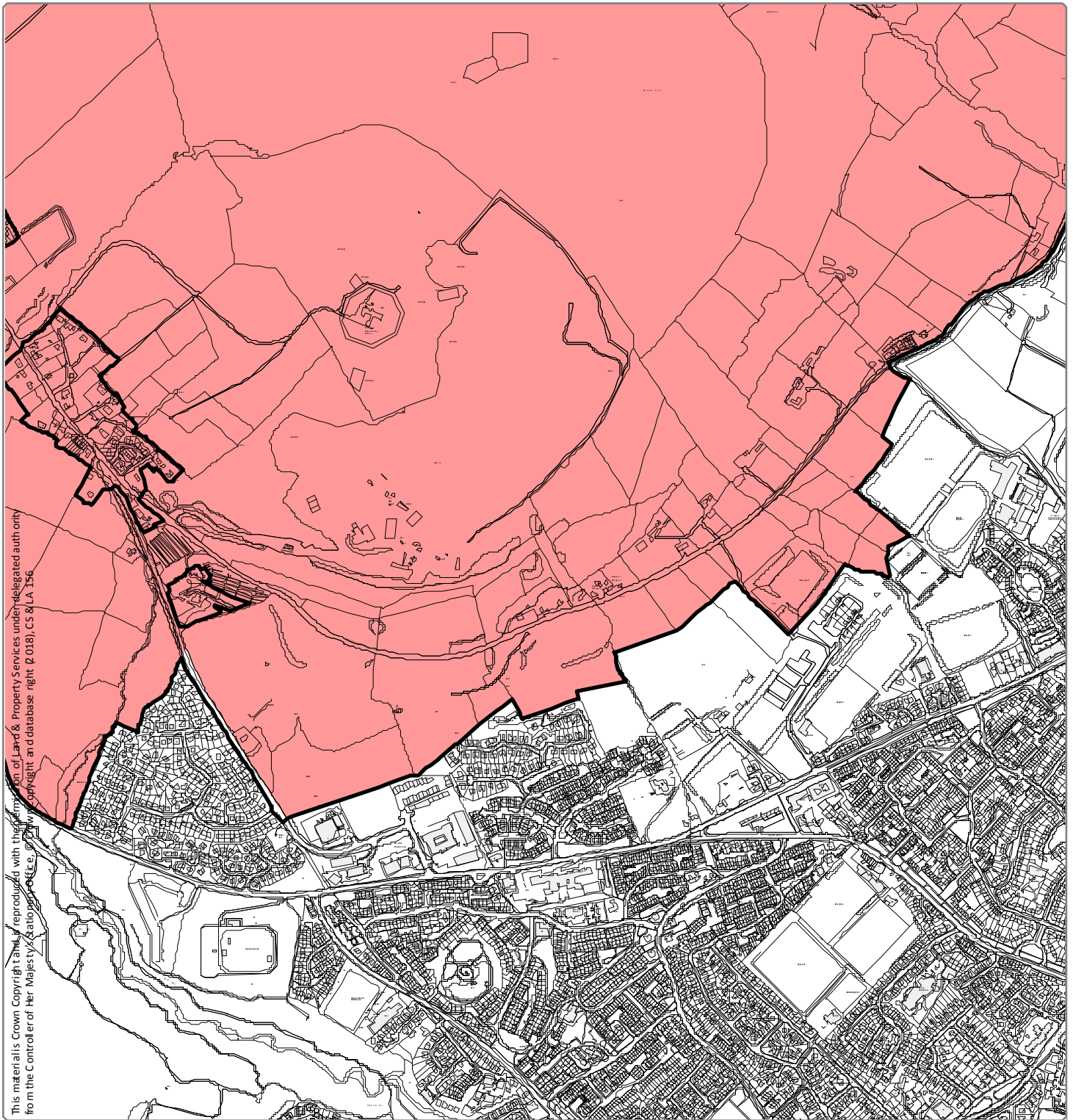


Designation Ref: COU 5/04 (Page 10 of 13)
Location: BELFAST BASALT ESCARPMENT

Source: Draft Belfast Metropolitan Area Plan 2015 in its most advanced stage prior to formal adoption
 Note: Only the above Designation Ref is shown on this map

Scale 1:12,000

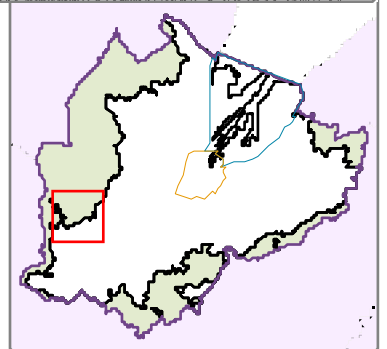


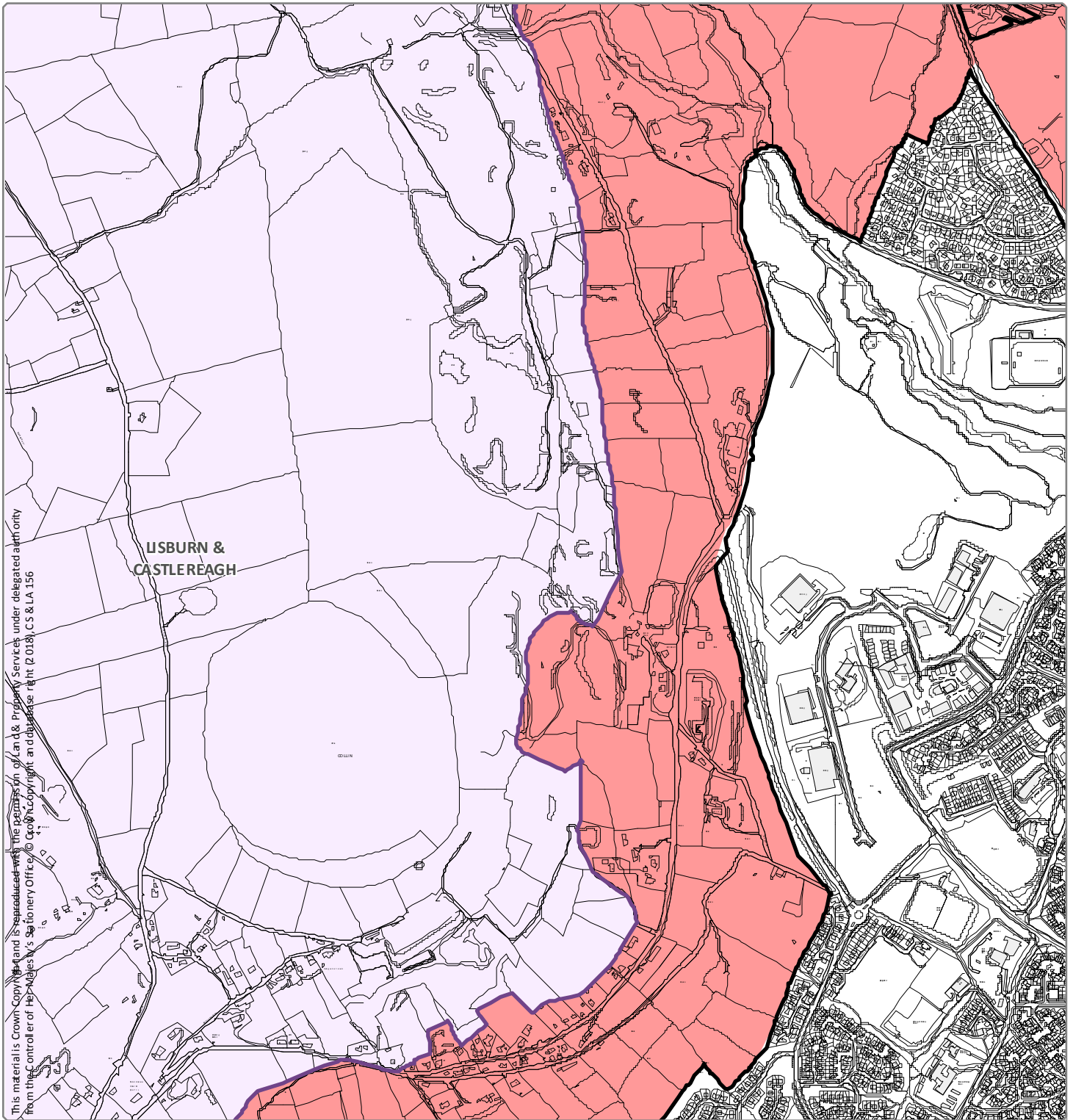


Designation Ref: COU 5/04 (Page 11 of 13)
Location: BELFAST BASALT ESCARPMENT

Source: Draft Belfast Metropolitan Area Plan 2015 in its most advanced stage prior to formal adoption
 Note: Only the above Designation Ref is shown on this map

Scale 1:12,000

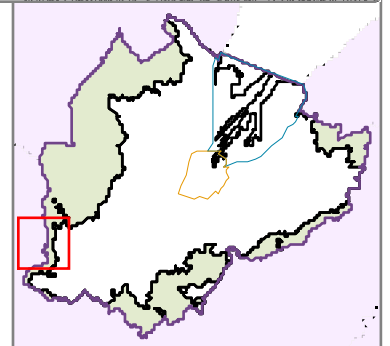


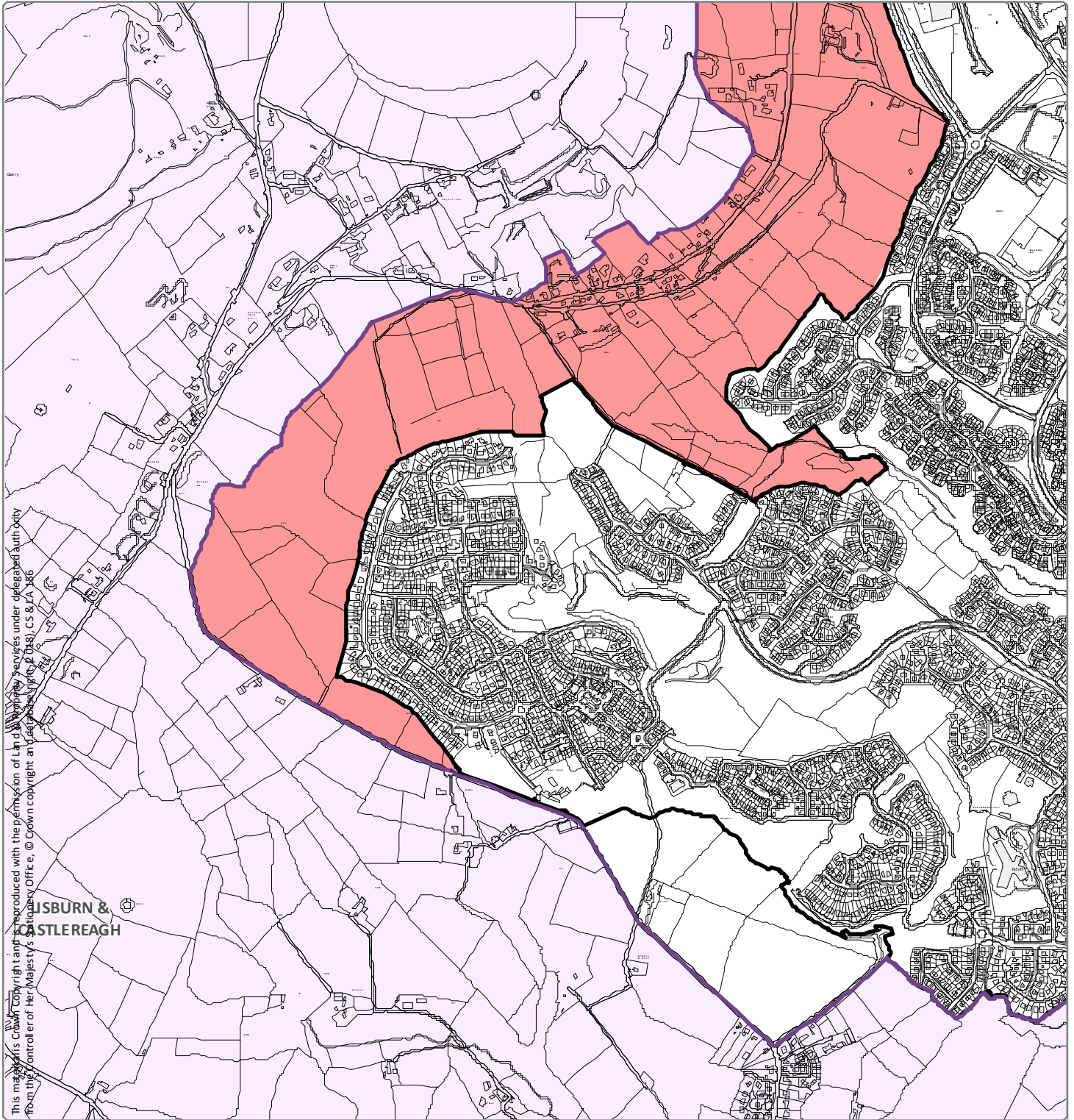


Designation Ref: COU 5/04 (Page 12 of 13)
Location: BELFAST BASALT ESCARPMENT

Source: Draft Belfast Metropolitan Area Plan 2015 in its most advanced stage prior to formal adoption
 Note: Only the above Designation Ref is shown on this map

Scale 1:12,000




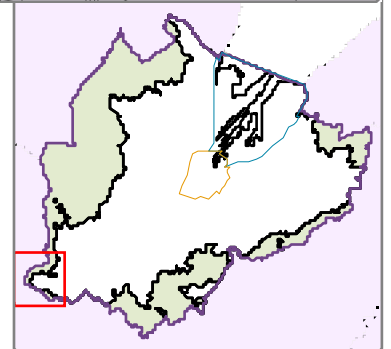


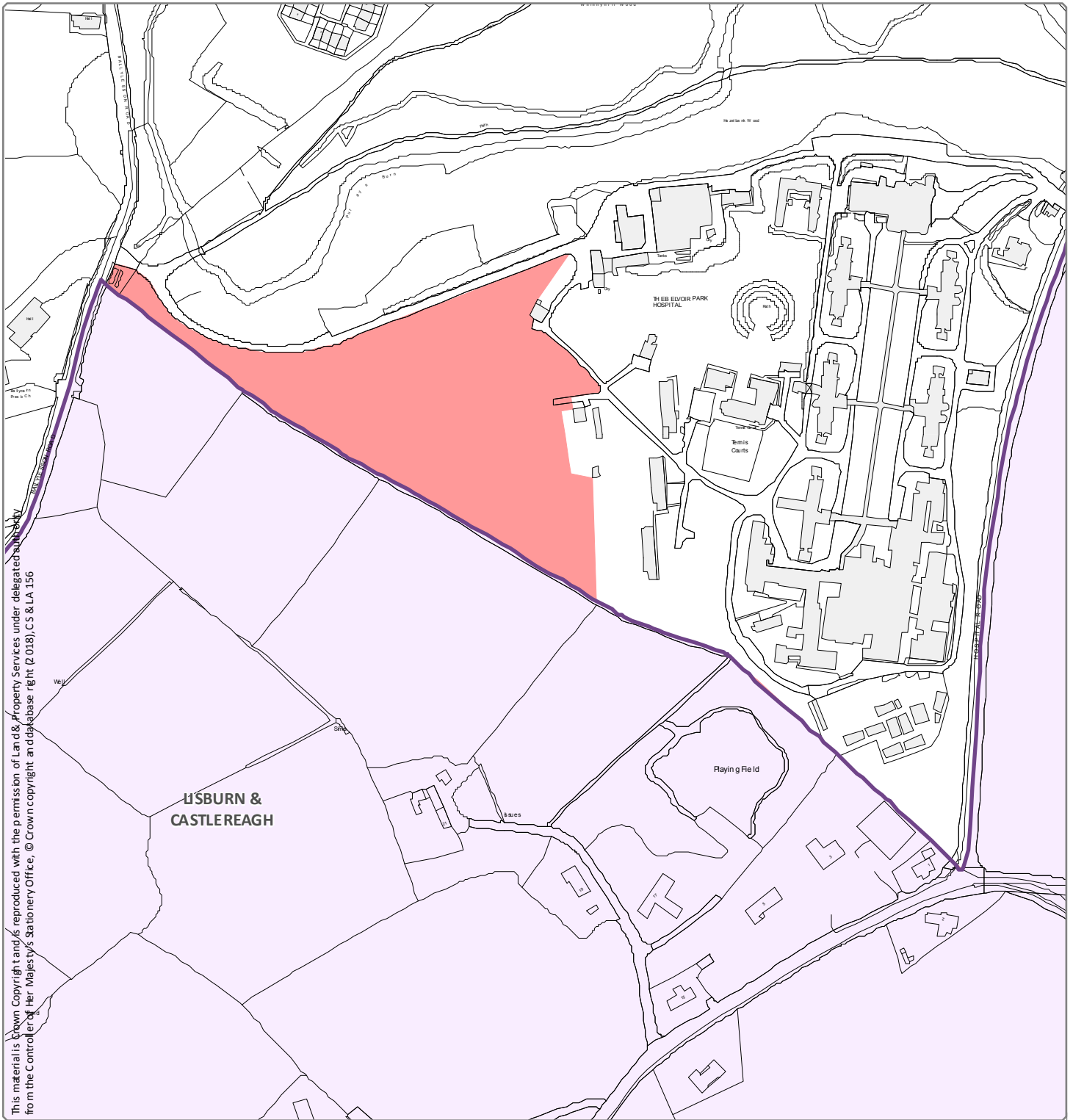
This map is Crown Copyright and is reproduced with the permission of Land Information Services under delegated authority from the Controller of Her Majesty's Stationery Office, © Crown copyright and database rights, 2018, CS & ZA 186

Designation Ref: COU 5/04 (Page 13 of 13)
Location: BELFAST BASALT ESCARPMENT

Source: Draft Belfast Metropolitan Area Plan 2015 in its most advanced stage prior to formal adoption
 Note: Only the above Designation Ref is shown on this map

Scale 1:12,000 

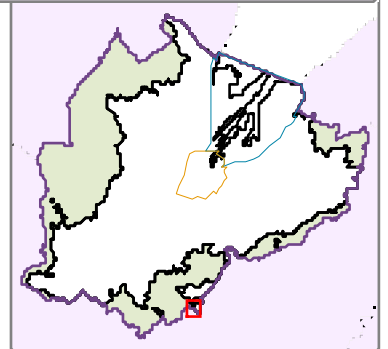


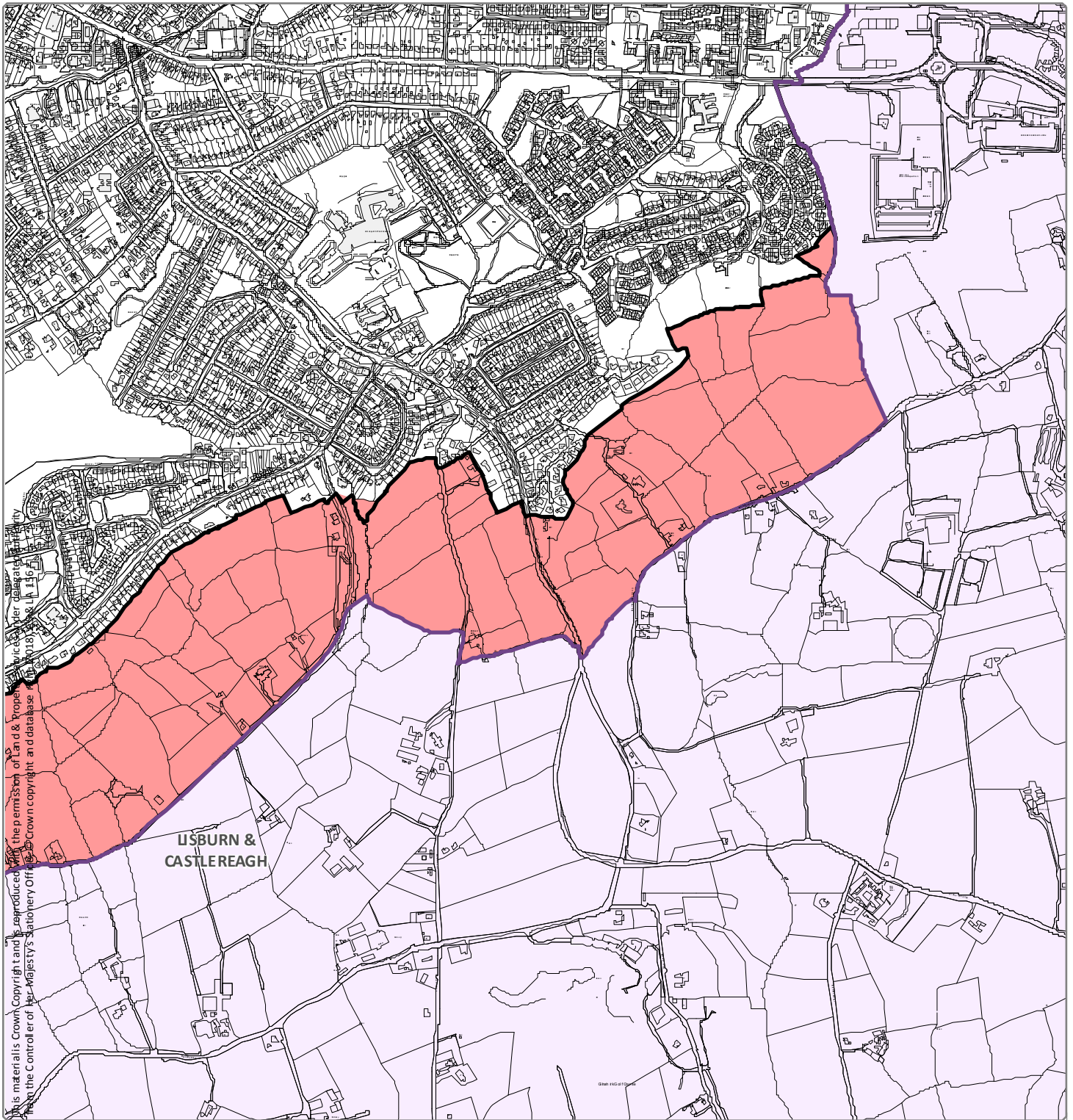


Designation Ref: COU 5/07
Location: CASTLEREAGH SLOPES

Source: Draft Belfast Metropolitan Area Plan 2015 in its most advanced stage prior to formal adoption
 Note: Only the above Designation Ref is shown on this map

Scale 1:3,500

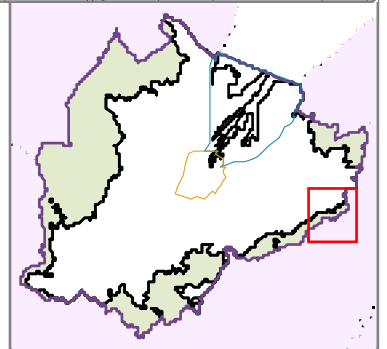


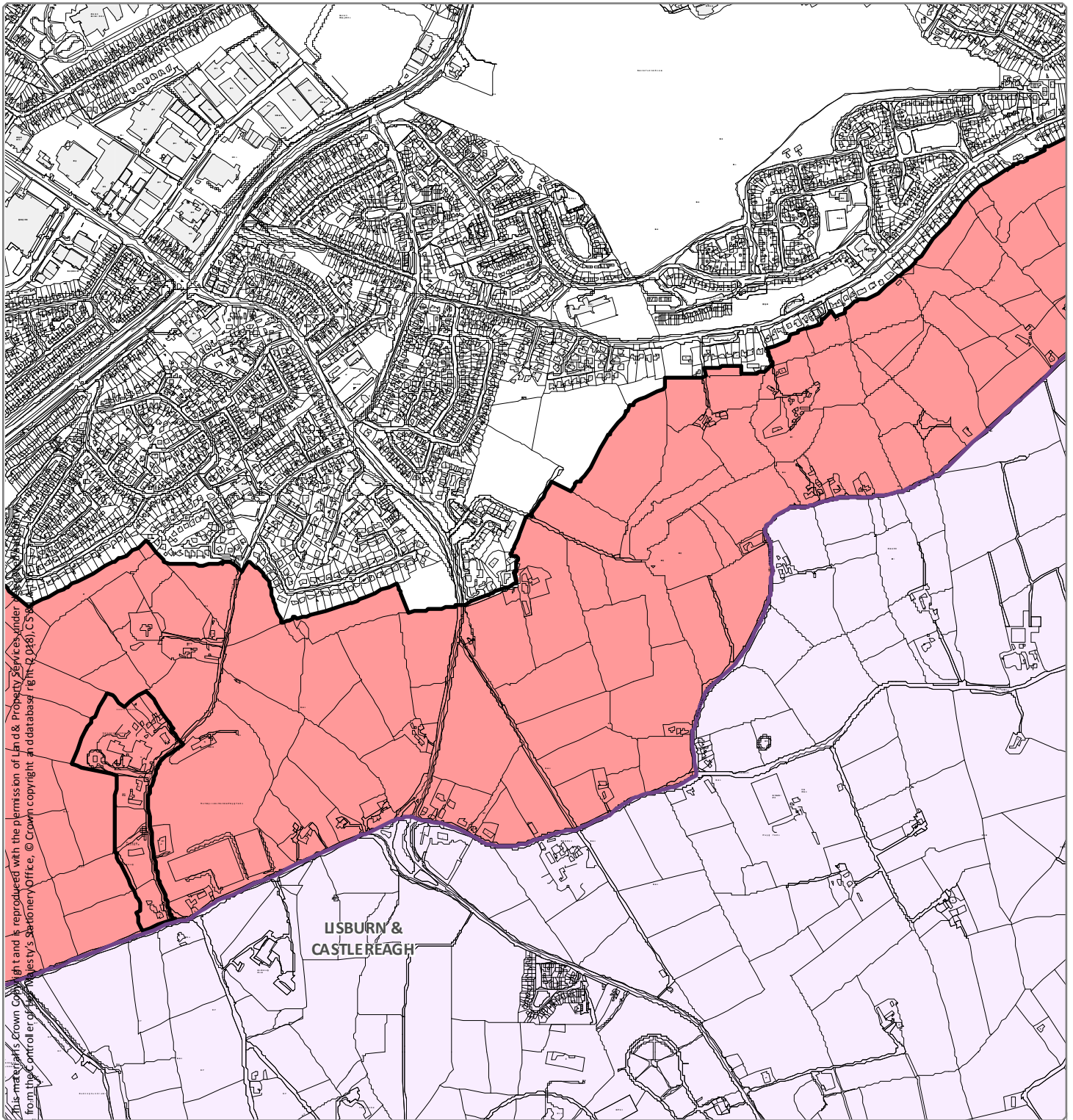


Designation Ref: COU 5/08 (Page 1 of 3)
Location: CASTLEREAGH ESCARPMENT

Source: Draft Belfast Metropolitan Area Plan 2015 in its most advanced stage prior to formal adoption
 Note: Only the above Designation Ref is shown on this map

Scale 1:12,000




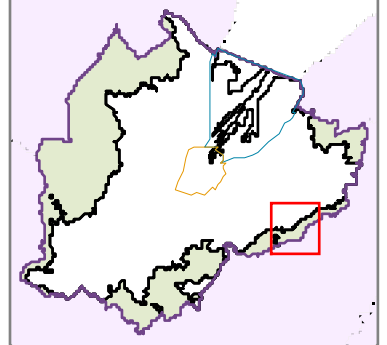


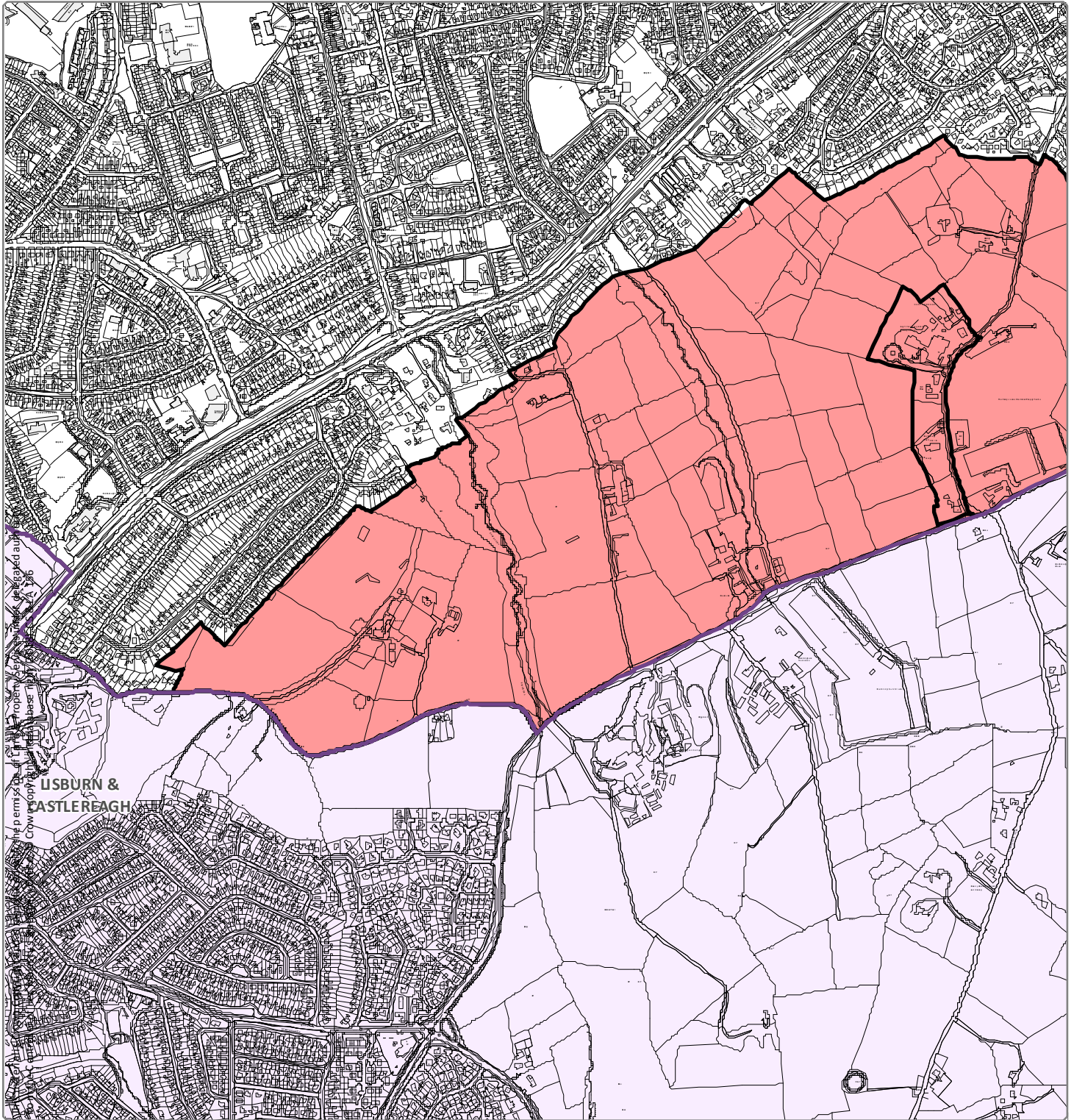
This map is Crown Copyright and is reproduced with the permission of Land & Property Services under the terms of the Ordnance Survey's Stationery Office, © Crown copyright and database right (2018), CS18

Designation Ref: COU 5/08 (Page 2 of 3)
Location: CASTLEREAGH ESCARPMENT

Source: Draft Belfast Metropolitan Area Plan 2015 in its most advanced stage prior to formal adoption
Note: Only the above Designation Ref is shown on this map

Scale 1:12,000 

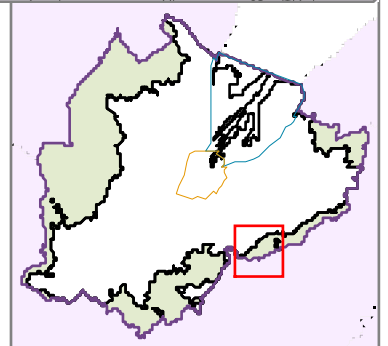


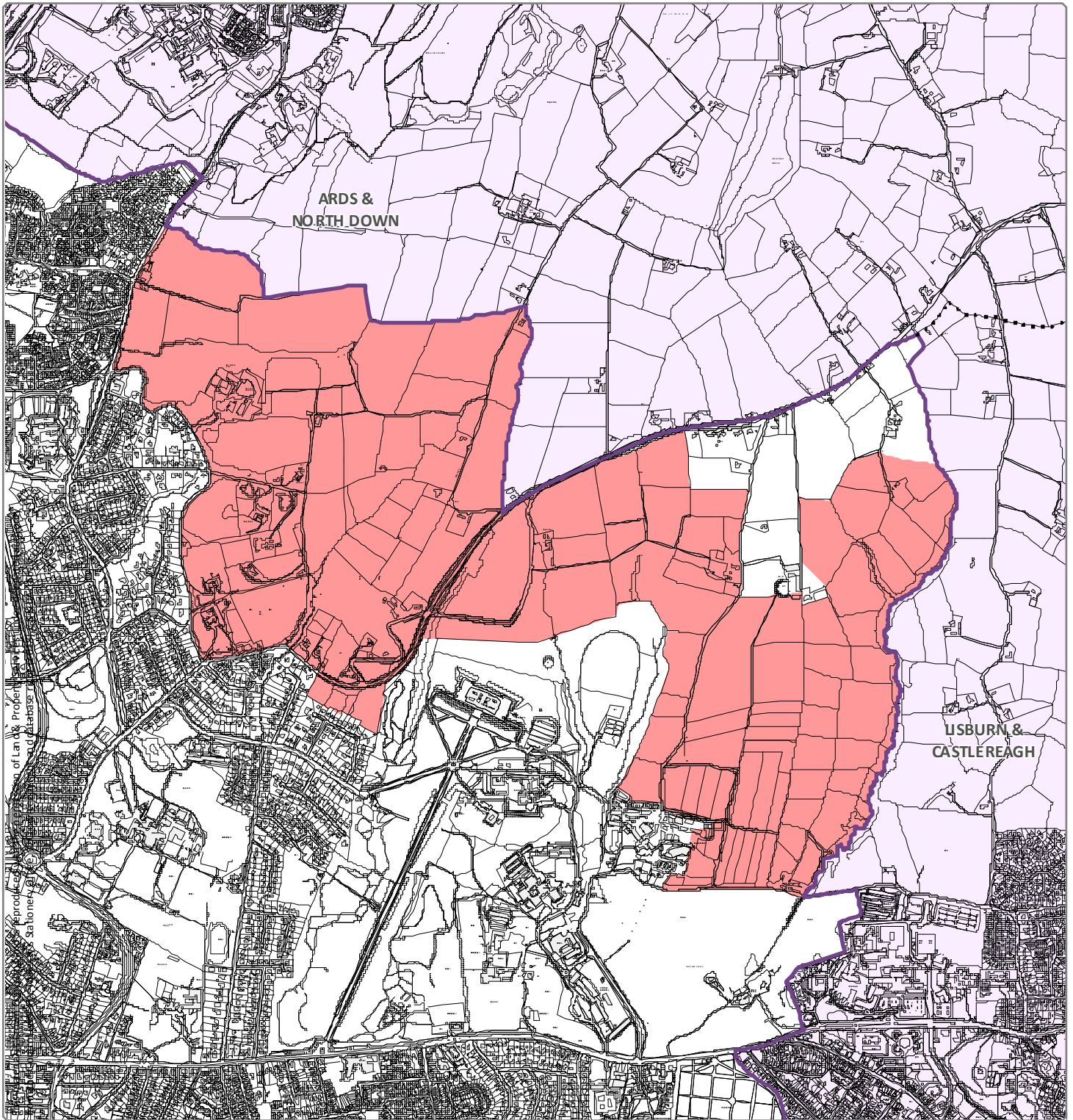


Designation Ref: COU 5/08 (Page 3 of 3)
Location: CASTLEREAGH ESCARPMENT

Source: Draft Belfast Metropolitan Area Plan 2015 in its most advanced stage prior to formal adoption
 Note: Only the above Designation Ref is shown on this map

Scale 1:12,000





Designation Ref: COU 5/09
Location: CRAIGANTLET ESCARPMENT

Source: Draft Belfast Metropolitan Area Plan 2015 in its most advanced stage prior to formal adoption
Note: Only the above Designation Ref is shown on this map

Scale 1:18,500 